

010-151

Cisco Certified Technician (CCT) for Data Center

QUESTION 1

Which method is a TCP/IP-based protocol for establishing and managing connections between IP-based storage devices, hosts, and clients?

- A. FCIP
- B. iFCP
- C. iSCSI
- D. FCoE

Correct Answer: C

QUESTION 2

Which method does FCIP use to enable connectivity of geographically distributed Fibre Channel SANs over IP?

- A. routing
- B. tunneling
- C. handshaking
- D. transporting

Correct Answer: B

QUESTION 3

Which important feature on the front end is provided to the clients by multiple servers that access the same storage devices across the SAN?

- A. recovery
- B. redundancy
- C. resiliency
- D. security
- E. storage

Correct Answer: B

QUESTION 4

The Ethernet specification details several different fiber optic media types. What is the wire transmission speed for 100BASE-FX Ethernet?

- A. 10 Mb/s
- B. 100 Mb/s
- C. 1000 Mb/s
- D. 10000 Mb/s

Correct Answer: B

QUESTION 5

Which fiber optic cable type is used most often with a Subscriber connector?

- A. dual-mode
- B. single-mode
- C. straight-mode

- D. multi-mode
- E. subscriber-mode

Correct Answer: B

QUESTION 6

Which type of connection across the network does a SAN allow for multiple servers to access an unlimited amount of storage devices?

- A. any-to-many
- B. many-to-any
- C. any-to-any
- D. any-to-one
- E. one-to-any
- F. one-to-one

Correct Answer: C

QUESTION 7

What is the wire transmission speed for 100GBASE-ER4 Ethernet?

- A. 100 Mb/s
- B. 1 Gb/s
- C. 10 Gb/s
- D. 100 Gb/s

Correct Answer: D

QUESTION 8

Which two statements about PCIe are true? (Choose two.)

- A. The PCIe link is built around dedicated unidirectional couples of serial, point-to-point connections known as lanes.
- B. You can install a PCI Express x8 adapter into an x4 slot.
- C. The PCIe standard is a bus-based system in which all the devices share the same bidirectional, 32-bit or 64-bit, parallel signal path.
- D. The PCIe 1.0 standard doubles the transfer rate compared to PCIe 2.0.
- E. A link that is composed of four lanes is called an x4 link.

Correct Answer: AE

QUESTION 9

Which three statements about FCoE are true? (Choose three.)

- A. Allows Fibre Channel and Ethernet networks to share a single, integrated infrastructure.
- B. Encapsulates Fibre Channel frames into Ethernet frames, which allows them to run alongside traditional IP traffic.
- C. Increases capital costs due to the difficulty to manage.
- D. Consolidates I/O traffic in the data center.

Correct Answer: ABD

QUESTION 10

Which cable is used to access the command-line interface of a Cisco UCS 6120XP Fabric Interconnects?

- A. KVM cable
- B. console cable
- C. Ethernet cable
- D. SFP+ Ethernet transceiver cable

Correct Answer: B

QUESTION 11

Where do you find the model number of a Cisco MDS 9200 Series chassis?

- A. on the top front of the chassis next to the serial number
- B. on the bottom front of the chassis next to the Cisco logo
- C. on the top front of the chassis next to the Cisco logo
- D. on the bottom front of the chassis next to the serial number

Correct Answer: C

QUESTION 12

How do you find the serial number of a Cisco UCS 5108 Blade Server chassis?

- A. Use the Cisco UCS Admin.
- B. Use the Cisco UCS Application.
- C. Use the Cisco UCS Assistant.
- D. Use the Cisco UCS Manager.

Correct Answer: D

QUESTION 13

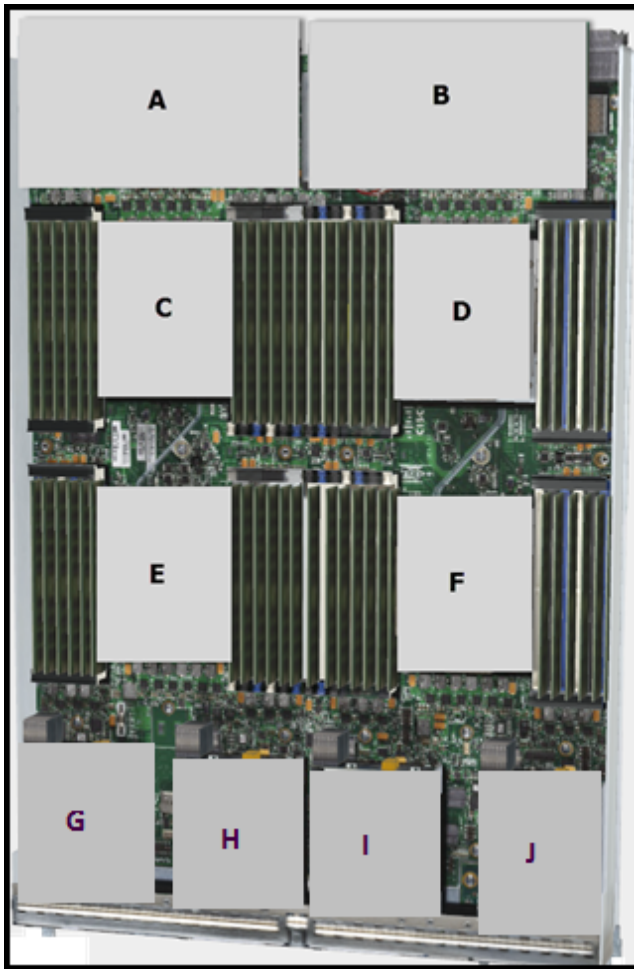
What does the system status LED look like when an over temperature or major alarm occurs on the Cisco UCS 6120XP Fabric Interconnect?

- A. Amber
- B. Red
- C. Blinking amber
- D. Blinking red

Correct Answer: C

QUESTION 14

Refer to the exhibit.



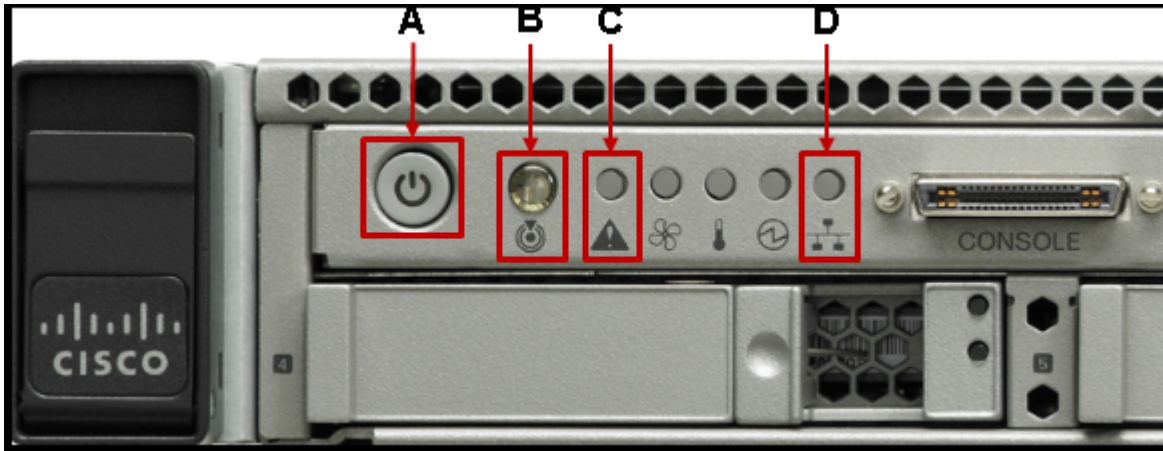
Which item does F represent?

- A. HDD 1
- B. TFP Module
- C. SuperCap Module
- D. CPU 2
- E. CMOS Battery

Correct Answer: D

QUESTION 15

Refer to the exhibit.



Which statement correctly identifies the front panel LEDs on the Cisco UCS C220 Server?

- A. A is power button and power status LED; B is identification button and LED; C is system status LED; D is network link activity LED.
- B. A is network link activity LED; B is system status LED; C is power button and power status LED; D is identification button and LED.
- C. A is system status LED; B is network link activity LED; C is power button and power status LED; D is identification button and LED.
- D. A is network link activity LED; B is system status LED; C is identification button and LED; D is power button and power status LED.

Correct Answer: A

QUESTION 16

Which processor option is supported in the Cisco UCS C420 M3 Server?

- A. up to two Intel Xeon E5-4600 series multicore processors
- B. up to two Intel Xeon E7-4800 series multicore processors
- C. up to four Intel Xeon E5-4600 series multicore processors
- D. two or four Intel Xeon E7-8800 series multicore processors

Correct Answer: C

QUESTION 17

Which two major components does a Cisco Nexus 1000V Series Switch have? (Choose two.)

- A. Virtual Fiber Channel Module
- B. Virtual Ethernet Module
- C. Virtual Supervisor Module
- D. Virtual Memory Controller Module
- E. Virtual Network Module

Correct Answer: BC

QUESTION 18

Which Cisco Nexus 5000 Series model supports 1/10G BASE-T ports?

- A. Cisco Nexus 5548P
- B. Cisco Nexus 5548UP

- C. Cisco Nexus 5596UP
- D. Cisco Nexus 5596T

Correct Answer: D

QUESTION 19

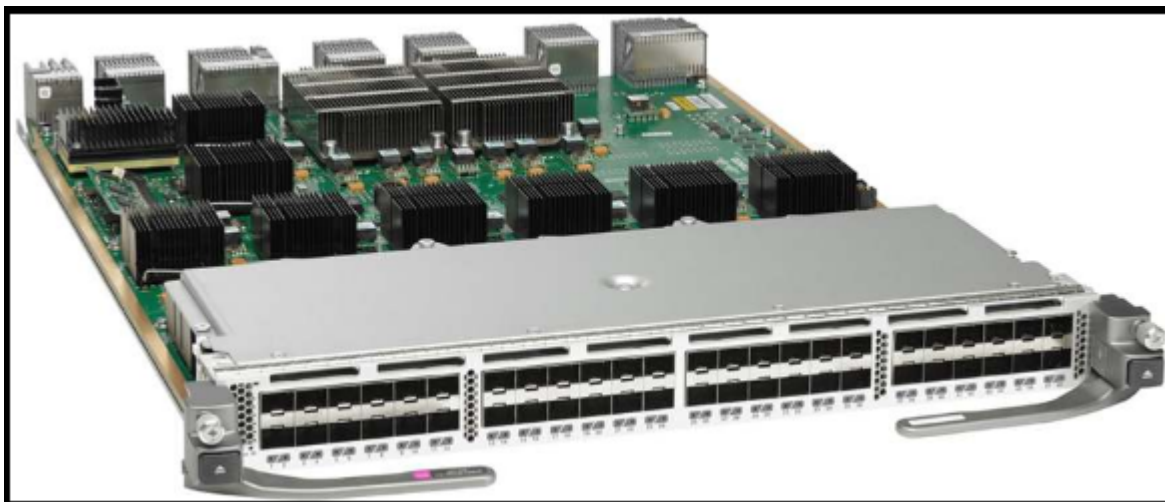
Which Cisco MDS model supports the most Fibre Channel ports per chassis?

- A. MDS 9513
- B. MDS 9509
- C. MDS 9506
- D. MDS 9250i

Correct Answer: A

QUESTION 20

Refer to the exhibit.



Which Cisco MDS chassis supports the 48-Port 16-Gbps Fibre Channel Switching Module?

- A. MDS 9509
- B. MDS 9513
- C. MDS 9710
- D. MDS 9506

Correct Answer: C

QUESTION 21

Refer to the exhibit.



What is the name of this rack-mount server?

- A. Cisco UCS C220 Rack-Mount Server
- B. Cisco UCS C240 Rack-Mount Server
- C. Cisco UCS C420 Rack-Mount Server
- D. Cisco UCS C460 Rack-Mount Server

Correct Answer: C

QUESTION 22

Which supervisor module is supported by a Cisco Nexus 7700 Series Switch?

- A. first-generation supervisor module
- B. second-generation supervisor module (Sup2)
- C. second-generation supervisor enhanced module (Sup2E)
- D. third-generation supervisor enhanced module (Sup3E)

Correct Answer: C

QUESTION 23

Which type of optics module is supported by a 12-port 100 GE Cisco Nexus 7700 F3 Series I/O module?

- A. CPAK
- B. QSFP+
- C. SFP/SFP+
- D. CFP

Correct Answer: A

QUESTION 24

Refer to the exhibit.



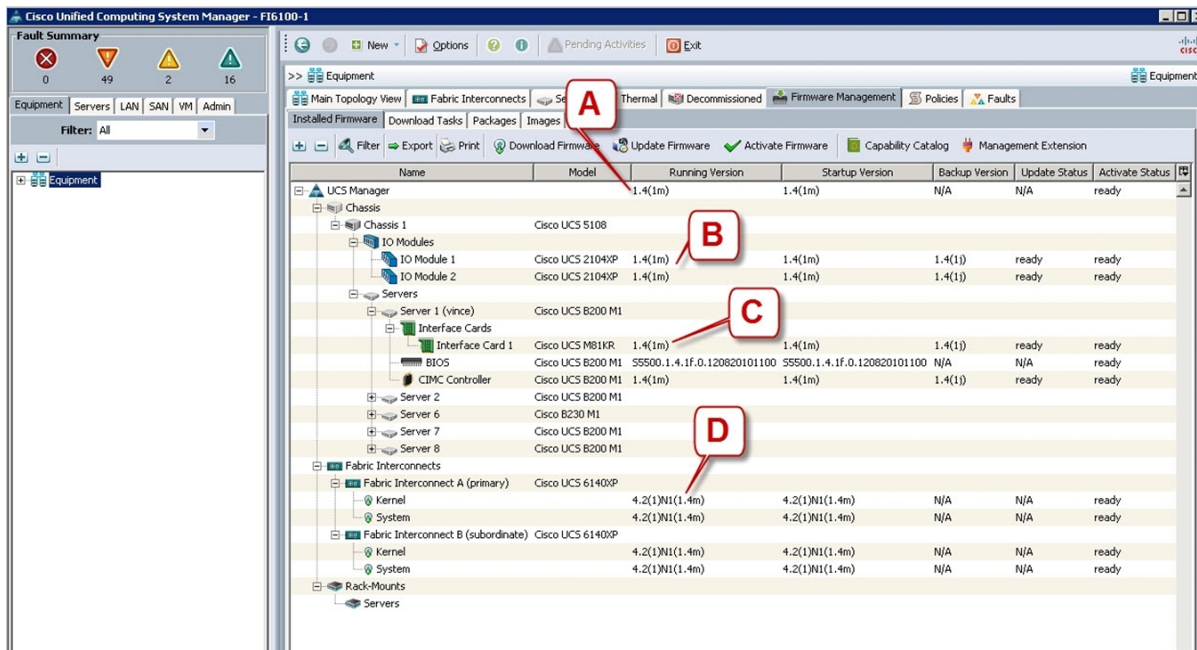
Which item does A represent?

- A. Emulex Adapter Card for Cisco UCS B420 M3 Blade Servers
- B. Virtual Interface Card for Cisco UCS B420 M3 Blade Servers
- C. mLOM for Cisco UCS B420 M3 Blade Servers
- D. Virtual Emulex Adapter Card for Cisco UCS B420 M3 Blade Servers
- E. SuperCap module for Cisco UCS B420 M3 Blade Servers

Correct Answer: C

QUESTION 25

Refer to the exhibit.



Which call-out accurately shows the current running version of the Cisco UCS Manager management software?

- A. A - UCS Manager running version 1.4(1m)
- B. B - IO Module 1 running version 1.4(1m)
- C. C - Interface Card 1 running version 1.4(1m)
- D. D - Kernel running version 4.2(1)N(1.4m)

Correct Answer: A

QUESTION 26

Which command-line interface mode is best described by this prompt?

UCS-switch-A (nxos)#

- A. maintenance mode
- B. EXEC mode
- C. local management mode
- D. global configuration mode
- E. Cisco IOS mode

Correct Answer: B

QUESTION 27

Which command can be used to exit to EXEC mode from this current mode?

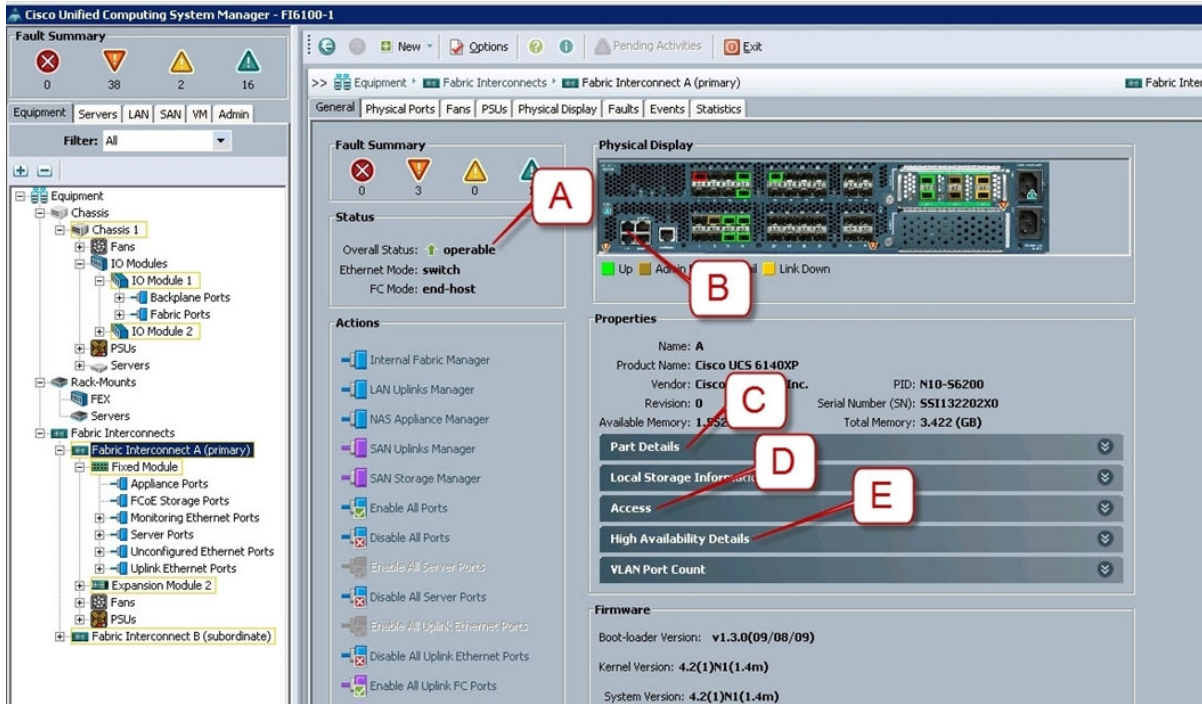
switch(config-if) #

- A. Ctrl-C
- B. Ctrl-L
- C. quit
- D. exit
- E. end

Correct Answer: E

QUESTION 28

Refer to the exhibit.



Where is the best place to see whether the system is ready for a Fabric Interconnect failover?

- A. A - Overall Status operable
- B. B - L1 Connection
- C. C - Part Details
- D. D - Access
- E. E - High Availability Details

Correct Answer: E

QUESTION 29

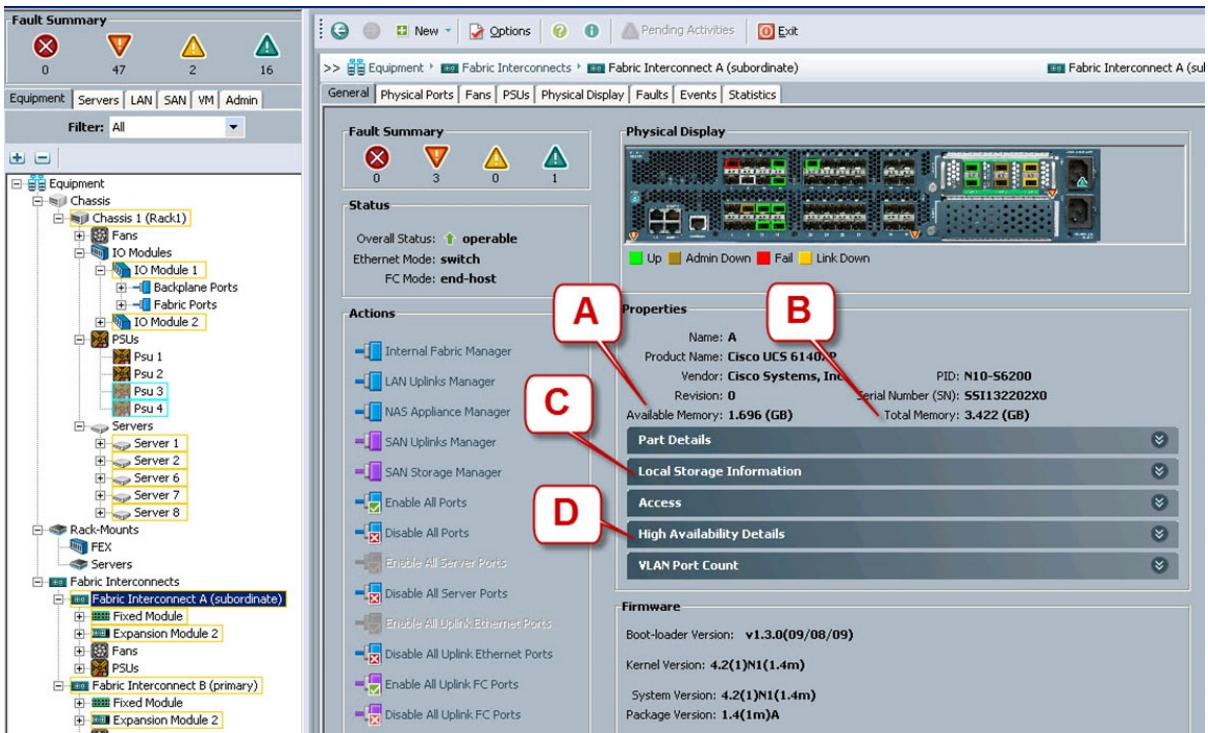
Which command saves the active configuration to NVRAM?

- A. copy startup-config running-config
- B. copy active-config backup-config
- C. copy running-config startup-config
- D. copy backup-config active-config

Correct Answer: C

QUESTION 30

Refer to the exhibit.



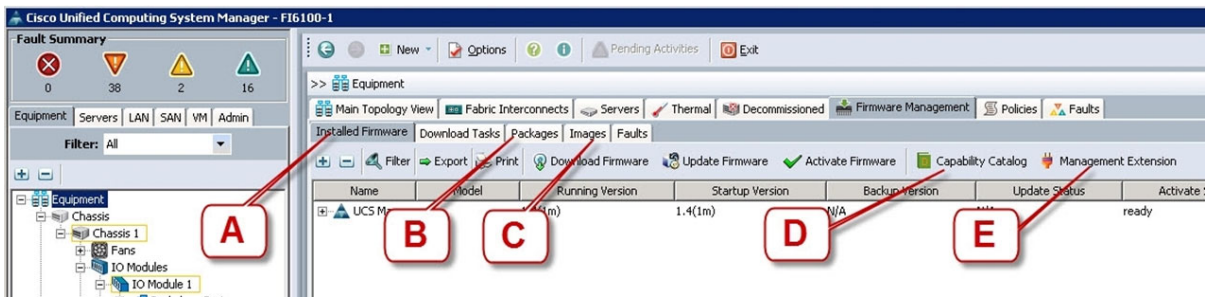
Where is the best place to see bootflash free space?

- A. A - Available Memory
- B. B - Total Memory
- C. C - Local Storage Information
- D. D - High Availability Details

Correct Answer: C

QUESTION 31

Refer to the exhibit.



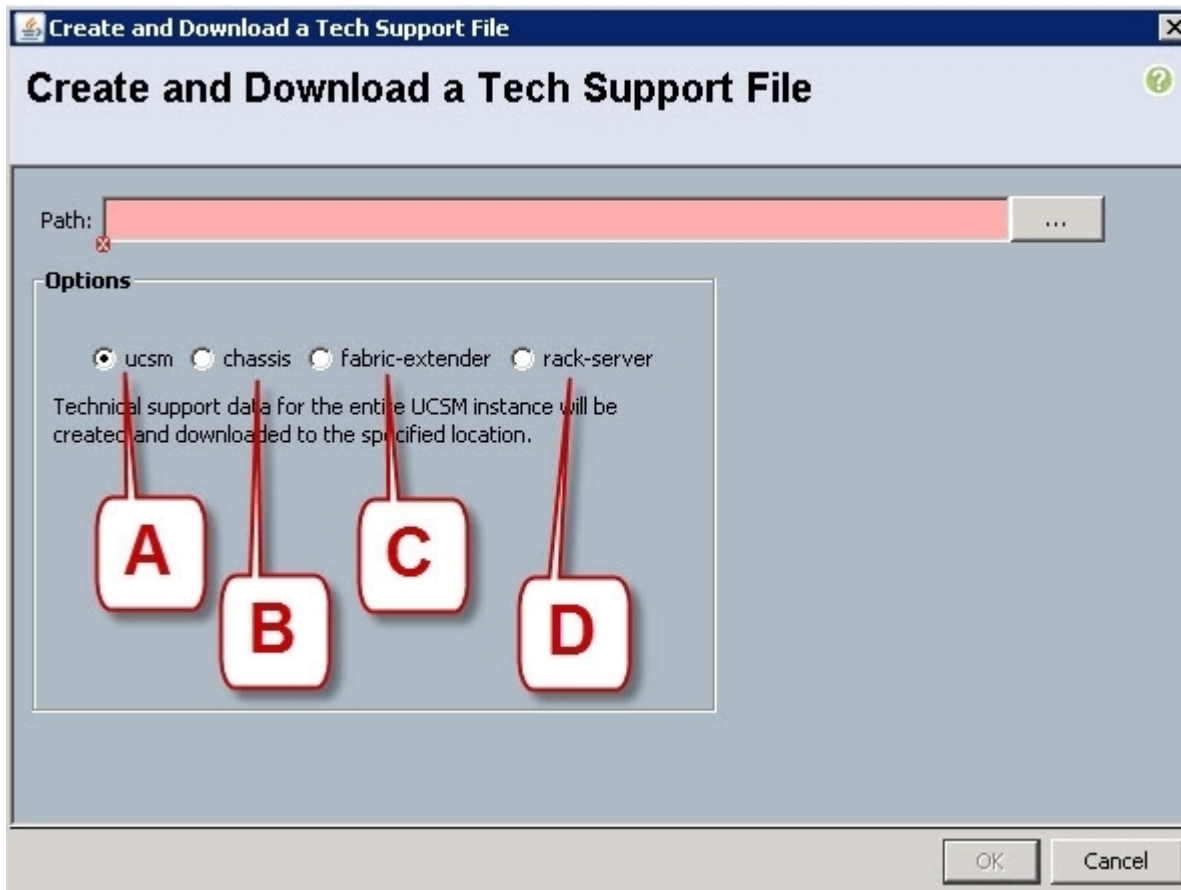
Where is the best place to find the B200 BIOS version used in a specific Cisco UCS Manager version?

- A. A - Installed Firmware
- B. B - Packages
- C. C - Images
- D. D - Capability Catalog
- E. E - Management Extension

Correct Answer: B

QUESTION 32

Refer to the exhibit.



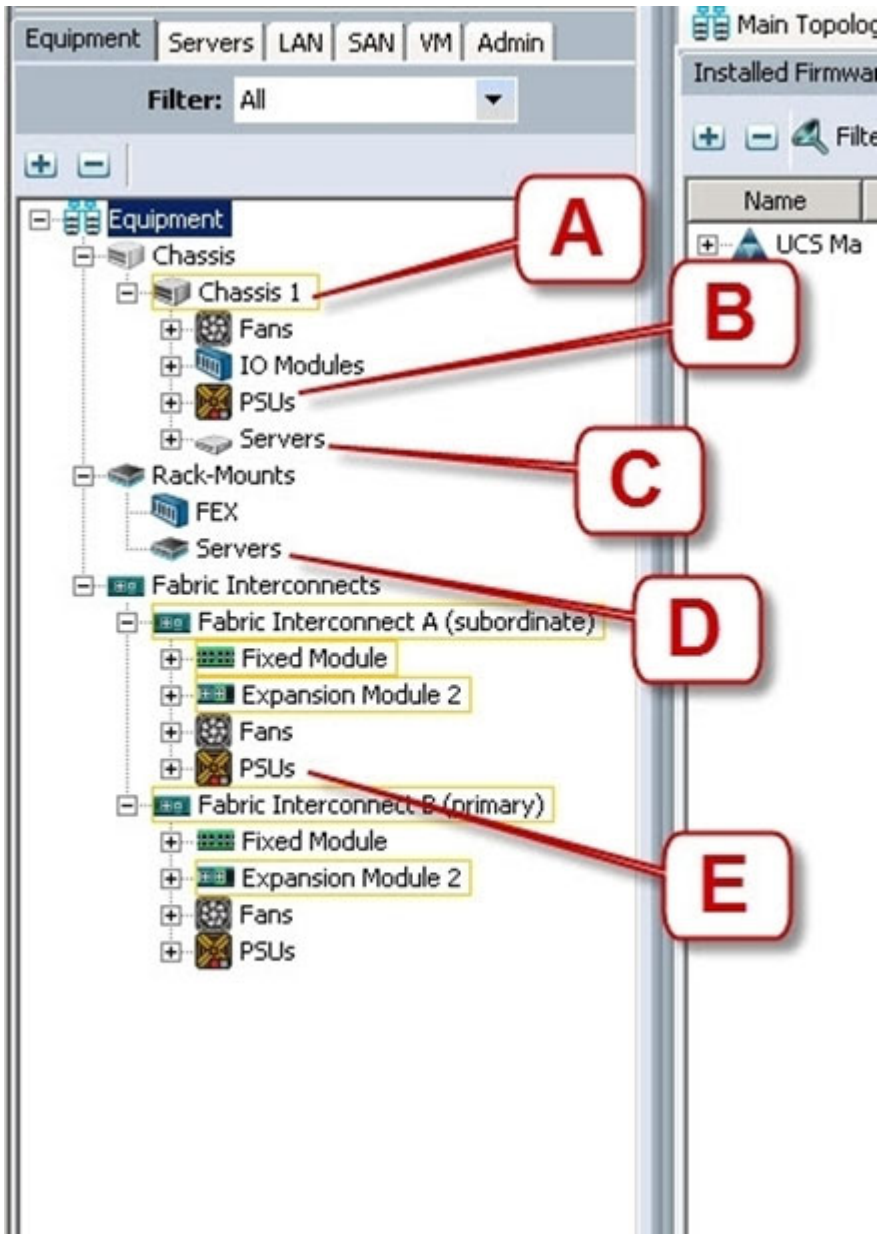
Which option should you select to get the output of the show tech-support detail command for the Cisco UCS B-Series blade?

- A. A - ucsm
- B. B - chassis
- C. C - fabric-extender
- D. D - rack-server

Correct Answer: B

QUESTION 33

Refer to the exhibit.



Where is the best place to see the power supply status of the blade server enclosure?

- A. A - Chassis 1
- B. B - Chassis 1 - PSUs
- C. C - Chassis1 - Servers
- D. D - Rack-Mounts - Servers
- E. E - Fabric Interconnects A - PSUs

Correct Answer: B

QUESTION 34

To do a password recovery on a Cisco NX-OS Switch, which option shows the correct syntax to display the bootflash contents at the switch(boot)#?

- A. display bootflash:

- B. show bootflash:
- C. dir bootflash:
- D. find bootflash:

Correct Answer: C

QUESTION 35

Which Cisco NX-OS command displays kernel uptime?

- A. show module
- B. show version
- C. show license
- D. show boot
- E. show interface

Correct Answer: B

QUESTION 36

Which two commands display the version of Cisco NX-OS code that the device is currently running on? (Choose two.)

- A. show version
- B. show module
- C. show interface
- D. show boot
- E. show license

Correct Answer: AB

QUESTION 37

On the Sensors page from the CIMC view, which four tabs are displayed to view further information? (Choose four.)

- A. Power Supply
- B. Fan
- C. Memory
- D. CPU
- E. LEDs
- F. Temperature

Correct Answer: ABEF

QUESTION 38

Which three options are the minimum browser requirements to log into the Cisco CIMC GUI? (Choose three.)

- A. Java 1.6 or higher
- B. HTTP and HTTPS enabled
- C. Adobe Flash Player 10 or higher
- D. Internet Explorer version 10
- E. Firefox 26.0
- F. Adobe Shockwave Player 11 or higher

Correct Answer: ABC

QUESTION 39

Which tool does a network administrator not need when installing hardware?

- A. cable tester
- B. wrench set
- C. cable wraps
- D. needle-nose pliers
- E. PCMCIA memory
- F. soldering iron with grounded tip

Correct Answer: F

QUESTION 40

When the Cisco UCS Manager is used to verify the B- or C-Series device, which two types of Overall Status are acceptable and do not indicate a failure? (Choose two.)

- A. Online
- B. OK
- C. Unassociated
- D. Active

Correct Answer: BC

QUESTION 41

What is the correct path to verify the Overall Status of Chassis 1 | Server 3?

- A. Equipment Tab > Chassis > Chassis 1 > Servers > Server 3 Status tab
- B. Equipment Tab > Chassis > Chassis 1 > Servers > Server 3 General tab
- C. Equipment Tab > Chassis > Chassis 1 > Servers > Server 3 FSM tab
- D. Servers Tab > Chassis > Server 3 General tab
- E. Status Tab > Chassis > Chassis 1 > Servers > Server 3
- F. Admin Tab > Chassis > Chassis 1 > Servers > Server 3 General tab

Correct Answer: B

QUESTION 42

If the Overall Status for a Cisco UCS B-Series Blade Server indicates a failure in the Cisco UCS Manager, such as discovery-failed, which statement is true?

- A. The server shuts down.
- B. The server automatically reboots reboot in 3 minutes.
- C. The endpoints on that server cannot be upgraded.
- D. The server is online, but the administrator cannot assign a service profile to that blade.

Correct Answer: C

QUESTION 43

Which action should the administrator take before physically removing a blade server for maintenance or replacement?

- A. Force the server to shut down.

- B. Disassociate the service profile.
- C. Decommission the server.
- D. Perform a graceful shutdown of the server.

Correct Answer: C

QUESTION 44

Which three statements about powering down a Cisco UCS C-Series Rack-Mount Server to perform maintenance or replacement are true? (Choose three.)

- A. Standby power mode: Power is supplied only to the service processor and the cooling fans, and it is safe to power off the server from this mode.
- B. Power status LED. Green indicates that the server is in main power mode and can be safely powered off.
- C. Graceful shutdown: Press and release the power button. The operating system performs a graceful shutdown, and the server goes to standby mode, which is indicated by an amber power status LED.
- D. Disconnect the power cords from the power supplies in your server to completely power off the server.
- E. Only an emergency shutdown can be performed using the power button on the server front panel.
- F. The Cisco UCS C-Series Rack-Mount Server has only one power mode.

Correct Answer: ACD

QUESTION 45

Which three components are hot swappable in a Cisco UCS Blade Server and Chassis? (Choose three.)

- A. Fabric Extender
- B. Power supply
- C. Heat sink
- D. SAS Hard Drive
- E. 2x8GB Kit DIMMs
- F. Mezzanine card

Correct Answer: ABD

QUESTION 46

Which five things should the administrator verify after performing maintenance or replacing a blade server? (Choose five.)

- A. blade server status
- B. hard drive status
- C. host OS boot status
- D. CPU status
- E. mezzanine card status
- F. memory DIMM status
- G. fan and power status

Correct Answer: ABDEF

QUESTION 47

Which two statements about DIMM replacement in Cisco UCS Servers are true? (Choose two.)

- A. In blade servers, DIMMs can be installed in either 1, 2, 4, or 8 DIMMs per channel.
- B. Rack-mount and blade servers have memory fault LEDs that indicate which DIMM requires attention.

- C. In servers that require pairs of DIMMs, the pairs must be identical (manufacturer, size, part #, and so on).
- D. If the memory in a server is not fully populated, you can install DIMMs in any open slot.

Correct Answer: AC

QUESTION 48

Which three tools are necessary to console into a Cisco UCS C-Series Rack-Mount Server? (Choose three.)

- A. Cisco DB-9-to-RJ-45 console cable
- B. laptop
- C. monitor
- D. keyboard
- E. KVM dongle
- F. USB serial adapter

Correct Answer: CDE

QUESTION 49

After installation or replacement of a Cisco UCS C-Series Rack-Mount Server, the host does not boot.

Which four options should be verified? (Choose four.)

- A. Verify the power source to the equipment.
- B. Check for loose HDD cables.
- C. Reseat the DIMMs, CPU, and PCI cards.
- D. Verify that power supplies are receiving power.
- E. Reseat the mezzanine card connector.
- F. Check the CPU sockets for bent pins.
- G. Check the Cisco IMC for fan faults.

Correct Answer: ACDF

QUESTION 50

Which three firmware components does the Host Upgrade Utility upgrade? (Choose three.)

- A. Fabric Interconnect firmware
- B. LAN on Motherboard
- C. Cisco UCS Manager
- D. CIMC
- E. System BIOS

Correct Answer: BDE

QUESTION 51

Which three troubleshooting procedures do you perform when there is no power to a Cisco UCS B250 M2 Blade Server? (Choose three.)

- A. Decommission and acknowledge the blade.
- B. Check the back of the blade to ensure that there is no damage to the connection that goes into chassis.
- C. Reseat the memory DIMMs.
- D. Check the CPU sockets for bent pins.
- E. Reseat the blade in the same slot in the chassis.

F. Move the blade to another slot in the chassis.

Correct Answer: BEF

QUESTION 52

Which two remote file system methods are used in the training material to transfer firmware to the Fabric Interconnect? (Choose two.)

- A. FTPS
- B. FTP
- C. TFTP
- D. RSH

Correct Answer: BC

QUESTION 53

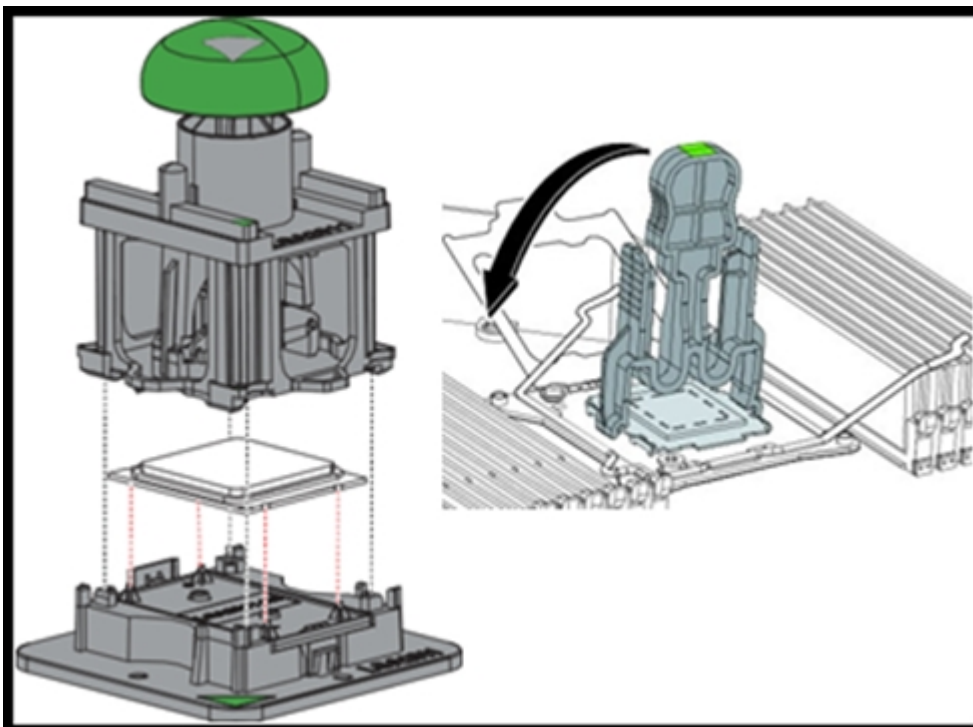
On which three devices can the Host Upgrade Utility be performed? (Choose three.)

- A. C420
- B. C230
- C. B230
- D. B210
- E. C210
- F. B460
- G. C240

Correct Answer: AEG

QUESTION 54

Refer to the exhibit.



This image shows a CPU Pick-and-Place tool and a CPU Socket Protective Cap Removal tool.

Which types of Cisco UCS servers and Intel Xeon processors do these tools support?

- A. Cisco UCS B22 Blade Server, C22 Rack Server, and C24 Rack Server with Intel Xeon E5-2400 Series processors
- B. Cisco UCS B22 Blade Server, C22 Rack Server, and C24 Rack Server with Intel Xeon E5-2600 Series processors
- C. Cisco UCS B200 M3 Blade Server, B420 M3 Blade Server, C220 Rack Server, C240 Rack Server, and C420 Rack Server with Intel Xeon E5-2400 Series processors
- D. Cisco UCS B200 M3 Blade Server, B420 M3 Blade Server, C220 Rack Server, C240 Rack Server, and C420 Rack Server with Intel Xeon E5-2600 Series processors

Correct Answer: D

QUESTION 55

When a host firmware package policy is created, what must it be associated with to upgrade the BIOS?

- A. blade or blade pool
- B. service profile
- C. boot policy
- D. service template

Correct Answer: B

QUESTION 56

Up to what speed can Category 5 UTP cable transmit data?

- A. 10 Mb/s
- B. 100 Mb/s
- C. 1000 Mb/s
- D. 10000 Mb/s

Correct Answer: C

QUESTION 57

Up to what speed can Category 5e UTP cable transmit data?

- A. 10 Mb/s
- B. 100 Mb/s
- C. 1000 Mb/s
- D. 10000 Mb/s

Correct Answer: C

QUESTION 58

What is the maximum distance that the 40GBASE-LR4 Ethernet standard can span?

- A. 550 m
- B. 10 km
- C. 40 km
- D. 80 km

Correct Answer: B

QUESTION 59

Refer to the exhibit.



Which three options are features of the Cisco UCS 6248UP Fabric Interconnect front panel? (Choose three.)

- A. Console port
- B. FCoE port
- C. 10 Gb/s port
- D. Fan module
- E. USB port

Correct Answer: ADE

QUESTION 60

Which two statements about the Cisco Nexus 5596UP switch are true? (Choose two.)

- A. Its power supplies and fan trays are hot-swappable.
- B. It supports unified ports.
- C. It is offered in a one-rack-unit form factor.
- D. It has one expansion slot.
- E. It supports up to 96 10G BASE-T ports.

Correct Answer: AB

QUESTION 61

Which two Cisco Nexus switches provide the foundation of the Cisco Application Centric Infrastructure? (Choose two.)

- A. Cisco Nexus 7718 switch
- B. Cisco Nexus 9508 switch
- C. Cisco Nexus 7710 switch
- D. Cisco Nexus 93128TX switch
- E. Cisco Nexus 6004 switch

Correct Answer: BD

QUESTION 62

Which type of optics module is supported by a 6-port 40 GE Cisco Nexus 7000 M2 Series I/O module?

- A. CPAK
- B. QSFP+
- C. SFP/SFP+
- D. CFP

Correct Answer: B

QUESTION 63

How many 10GBASE-T port licenses are preinstalled on a Cisco Nexus 3064-32T?

- A. 16
- B. 32
- C. 48
- D. 64

Correct Answer: B

QUESTION 64

Refer to the exhibit.



What is the name of this Cisco Nexus 3000 Series Switch?

- A. Cisco Nexus 3132Q
- B. Cisco Nexus 3172PQ
- C. Cisco Nexus 3524
- D. Cisco Nexus 3016

Correct Answer: A

QUESTION 65

What is the maximum number of supervisor modules that the Cisco MDS 9710 Switch supports?

- A. 1
- B. 2
- C. 4
- D. 6
- E. 8

Correct Answer: B

QUESTION 66

Which device provides analysis of Fibre Channel traffic without any network disruption?

- A. Cisco MDS 9000 Data Analyzer Adapter
- B. Cisco MDS 9000 Port Analyzer Adapter
- C. Cisco MDS 9000 Channel Analyzer Device
- D. Cisco MDS 9000 Channel Analyzer Adapter

Correct Answer: B

QUESTION 67

Which three steps do you perform to troubleshoot when a rack server powers on with no video? (Choose three.)

- A. Check that the front I/O dongle is properly seated.
- B. Check the front I/O cable connection to the motherboard.
- C. Check for memory subsystem failure.
- D. Verify the power source to equipment.
- E. Reseat the DIMMs, CPU, and PCI cards.

Correct Answer: ABC

QUESTION 68
DRAG DROP

Drag the password recovery procedures on a Cisco NX-OS switch from the left to the right and place them in order.

Select and Place:

Log in to the switch using the new administrator password.	Step 1
Reset the network administrator password.	Step 2
Load the Cisco NX-OS system software image.	Step 3
Power-cycle the switch.	Step 4
Reset the new password to ensure that it is also the Simple Network Management Protocol (or SNMP) password.	Step 5
To enter the boot prompt mode, press the Ctrl-J key sequence from the console port session when the switch begins the Cisco NX-OS software boot sequence.	Step 6
Save the configuration.	Step 7
Display the bootflash: contents to locate the Cisco NX-OS software image.	Step 8

Correct Answer:

Log in to the switch using the new administrator password.	Power-cycle the switch.
Reset the network administrator password.	To enter the boot prompt mode, press the Ctrl-J key sequence from the console port session when the switch begins the Cisco NX-OS software boot sequence.
Load the Cisco NX-OS system software image.	Reset the network administrator password.
Power-cycle the switch.	Display the bootflash: contents to locate the Cisco NX-OS software image.
Reset the new password to ensure that it is also the Simple Network Management Protocol (or SNMP) password.	Load the Cisco NX-OS system software image.
To enter the boot prompt mode, press the Ctrl-J key sequence from the console port session when the switch begins the Cisco NX-OS software boot sequence.	Log in to the switch using the new administrator password.
Save the configuration.	Reset the new password to ensure that it is also the Simple Network Management Protocol (or SNMP) password.
Display the bootflash: contents to locate the Cisco NX-OS software image.	Save the configuration.

QUESTION 69
DRAG DROP

Drag the cable or connector on the left to the correct interface on the right.

Select and Place:

KVM dongle	Fabric Interconnect to Fabric Extender
straight-through Ethernet cable	console port
mini USB cable	MDS
Twinax cable	C-Series Rack Server
Fiber Channel SFP	from laptop to Management Port
rolled RJ-45 cable	
SAS cable	

Correct Answer:

KVM dongle	Twinax cable
straight-through Ethernet cable	rolled RJ-45 cable
mini USB cable	Fiber Channel SFP
Twinax cable	KVM dongle
Fiber Channel SFP	straight-through Ethernet cable
rolled RJ-45 cable	
SAS cable	

QUESTION 70

Cisco UCS 5100 Blade Server Chassis supports which two devices? (Choose two.)

- A. Blade servers
- B. Fiber Extenders
- C. Rack-mount Servers
- D. S-Series Storage servers
- E. E-Series Servers

Correct Answer: AC

QUESTION 71

What is the command to provide details pertaining to the state of the cluster?

- A. Show cluster

- B. Show cluster extended-state
- C. Show cluster state
- D. Show extended cluster state

Correct Answer: B

QUESTION 72

Which two cable types can support 10Gbps speed? (Choose two.)

- A. CAT7
- B. CAT5a
- C. CAT5e
- D. CAT6a
- E. CAT5

Correct Answer: AD

QUESTION 73

Which two specialized tools do you need to service a UCS product? (Choose two.)

- A. Laptop
- B. Anti-static Strap
- C. KVM Console to USB 2.0 Portable Laptop Crash Cart
- D. Cable Tester
- E. Needle-nose pliers

Correct Answer: AB

QUESTION 74

Which group of UCS Virtual Interface Cards is exclusively designed for Cisco UCS C-Series Rack Server?

- A. VIC 1455, VIC 1480, VIC 1385, VIC 1340, VIC 1280
- B. VIC 1440, VIC 1340, VIC 1388, VIC 1280, M81KR VIC
- C. M81KR VIC, VIC 1497, VIC 1340, VIC 1387, VIC 1240
- D. VIC 1455, VIC 1497, VIC 1385, VIC 1387, VIC 1225

Correct Answer: D

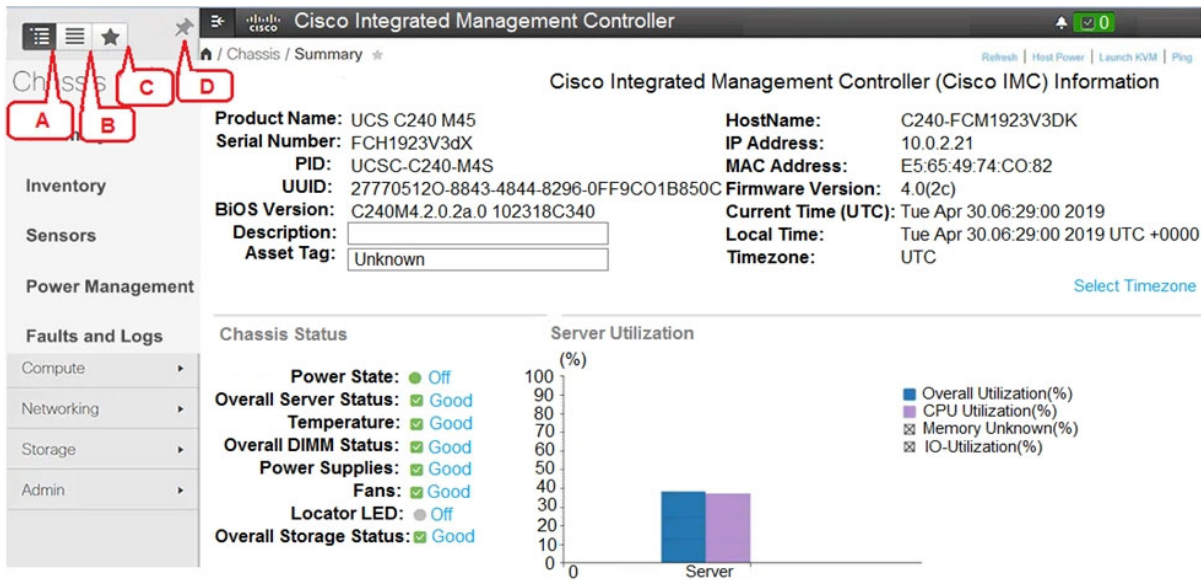
QUESTION 75

To confirm the installation of a B-Series Server, which GUI based management tool will be used?

- A. Windows 10
- B. UCSM (UCS Manager)
- C. Console Access
- D. CIMC (Cisco Integrated Management Controller)

Correct Answer: B

QUESTION 76



Refer to the exhibit. Which item does C represent?

- A. Pin icon (prevents Navigation pane from sliding)
- B. Icon to view the Navigation pane
- C. Favorite Icon (make any specific work pane in the application as your favorite)
- D. Index Icon (view listing in alphabetical order)

Correct Answer: C

QUESTION 77

What is Platform as a Service?

- A. It configures, manages and develops networking environment for your application.
- B. It is when an application service is delivered over the network on a subscription basis.
- C. It is where servers and virtual machines (VMs), network and storage are delivered over the network on a pay-as-you-go basis.
- D. It is the software development framework and components delivered over the network on a pay-as-you-go basis.

Correct Answer: D

QUESTION 78

Which statement is true about cloud computing?

- A. It provides self-service, on-demand provisioning and a billing for corporate usage only.
- B. Users usually own and maintain their own IT infrastructure and facility.
- C. It provides end-to-end server, application network service, and storage virtualization.
- D. It increases total cost of ownership.

Correct Answer: C

QUESTION 79

In the Cisco UCS S3260 Storage Server which two of the below ports are available on a System I/O Controller? (Choose two.)

- A. Dedicated Management port
- B. PCIe ports
- C. KVM Console port
- D. QSFP port
- E. Ethernet LOM port

Correct Answer: BD

QUESTION 80

Which two virtualization technologies are used in a modern data center design? (Choose two.)

- A. Storage virtualization
- B. Cloud virtualization
- C. Platform virtualization
- D. Server virtualization
- E. Application virtualization

Correct Answer: CD

QUESTION 81

What is the name of the process to automatically upgrade a new Fabric Interconnect when it is connected to the functioning Fabric Interconnect?

- A. Firmware Policy Process
- B. Auto-Negotiate Process
- C. Auto-Sync Process
- D. Firmware Update Process

Correct Answer: D

QUESTION 82

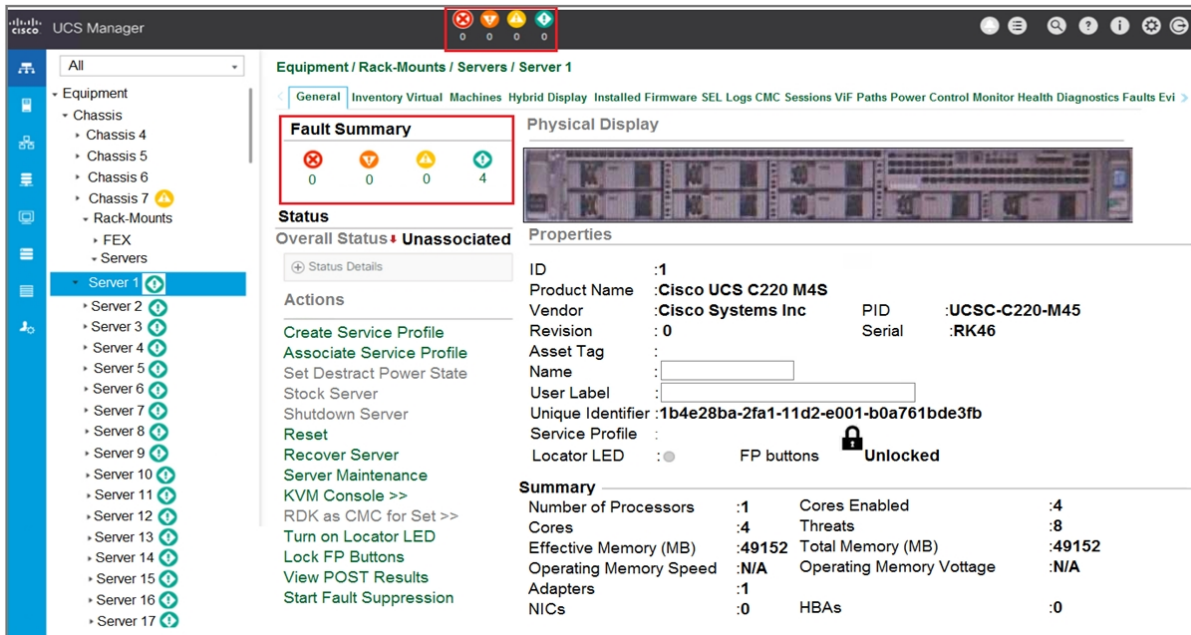
Which tool is needed when servicing a UCS M5 server?

- A. PCIe slot cover
- B. T-30 Torx driver
- C. M5 DIMM puller
- D. HDD removal tool

Correct Answer: B

QUESTION 83

DRAG DROP



Refer to the exhibit. Match the Fault Icons to the appropriate description.

Select and Place:



Problems exist with one or more components that might adversely affect system performance. These issues should be researched and fixed as soon as possible before they become major or critical issues.



Potential problems exist with one or more components that might adversely affect system performance if they are allowed to continue. These issues should be researched and fixed as soon as possible before the problem grows worse.



Critical problems exist with one or more components. These issues should be researched and fixed immediately.



Serious problems exist with one or more components. These issues should be researched and fixed immediately.

Correct Answer:



Problems exist with one or more components that might adversely affect system performance. These issues should be researched and fixed as soon as possible before they become major or critical issues.



Potential problems exist with one or more components that might adversely affect system performance if they are allowed to continue. These issues should be researched and fixed as soon as possible before the problem grows worse.



Critical problems exist with one or more components. These issues should be researched and fixed immediately.



Serious problems exist with one or more components. These issues should be researched and fixed immediately.

QUESTION 84

When replacing a standalone C-Series server which order will be used to shut down the server via CIMC?

- A. Click Power off, Click Shut off
- B. Click Power off, Click Shut down
- C. Click Host power, Click Shut off
- D. Click Host power, Click Shut down

Correct Answer: B

QUESTION 85

Which command syntax is correct to reset the admin password when the switch is in the kickstart prompt?
switch(boot) #"

- A. **exec -> admin-password**
- B. **connect local-mgmt -> admin-password**
- C. **configure terminal -> admin-password**
- D. **connect nxos -> admin-password <password>**
- E. **admin-password**

Correct Answer: C

QUESTION 86

Which statement about the Cisco Nexus 3408-S switch is true?

- A. It is offered in a three-rack-unit (3-RU) form factor.
- B. It supports 200G or 400G line card expansion modules.
- C. It has dual-redundant power supplies.

D. It is 4-slot chassis with 400G line card expansion modules.

Correct Answer: C

QUESTION 87

What enables NVM Express host software to communicate with nonvolatile memory?

- A. SATA
- B. SAS
- C. PCIe
- D. SCSI

Correct Answer: C

QUESTION 88

Which two transceivers can support 100 Gigabit Ethernet? (Choose two.)

- A. SFP+
- B. SFP28
- C. QSFP+
- D. QSFP28
- E. SFP-DD

Correct Answer: CD

QUESTION 89

What are two common steps to troubleshooting a rack server with unrecognized or memory errors? (Choose two.)

- A. Ensure DIMMs are installed in correct slots
- B. Check CPU sockets for bent pins
- C. Check that the AC power cord is OK
- D. Reseat DIMMs
- E. Check the front I/O cable connection to the motherboard

Correct Answer: AD

QUESTION 90

Which Cisco UCS Virtual Interface Card Series is designed exclusively for the M5 generation?

- A. M81KR VIC
- B. VIC 1400 Series
- C. VIC 1300 Series
- D. VIC 1200 Series

Correct Answer: B

QUESTION 91

When activating the firmware via UCSM which two firmware versions must be activated at the same time?

- A. UCS Manager and System
- B. UCS Manger and Kernel
- C. CIMC and Kernel

D. System and Kernel

Correct Answer: D

QUESTION 92

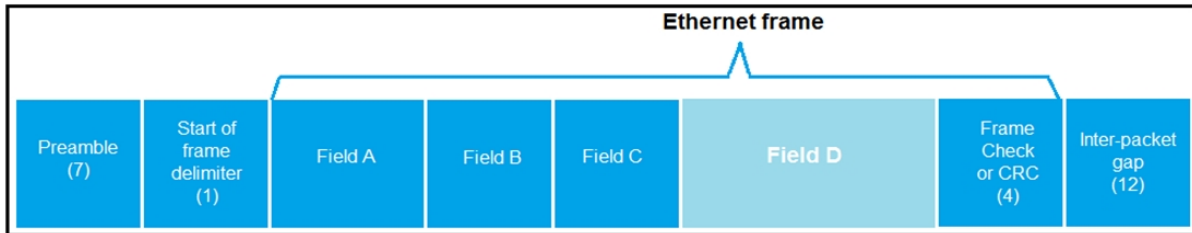
In Cisco UCS C480 M5 server, which PCIe slot is the default slot for the rear RAID controller when the rear drive module is used with SAS/SATA drives?

- A. PCIe slot 09
- B. PCIe slot 10
- C. PCIe slot 11
- D. PCIe slot 12

Correct Answer: C

QUESTION 93

DRAG DROP



Refer to the diagram, match the following Ethernet frame fields.

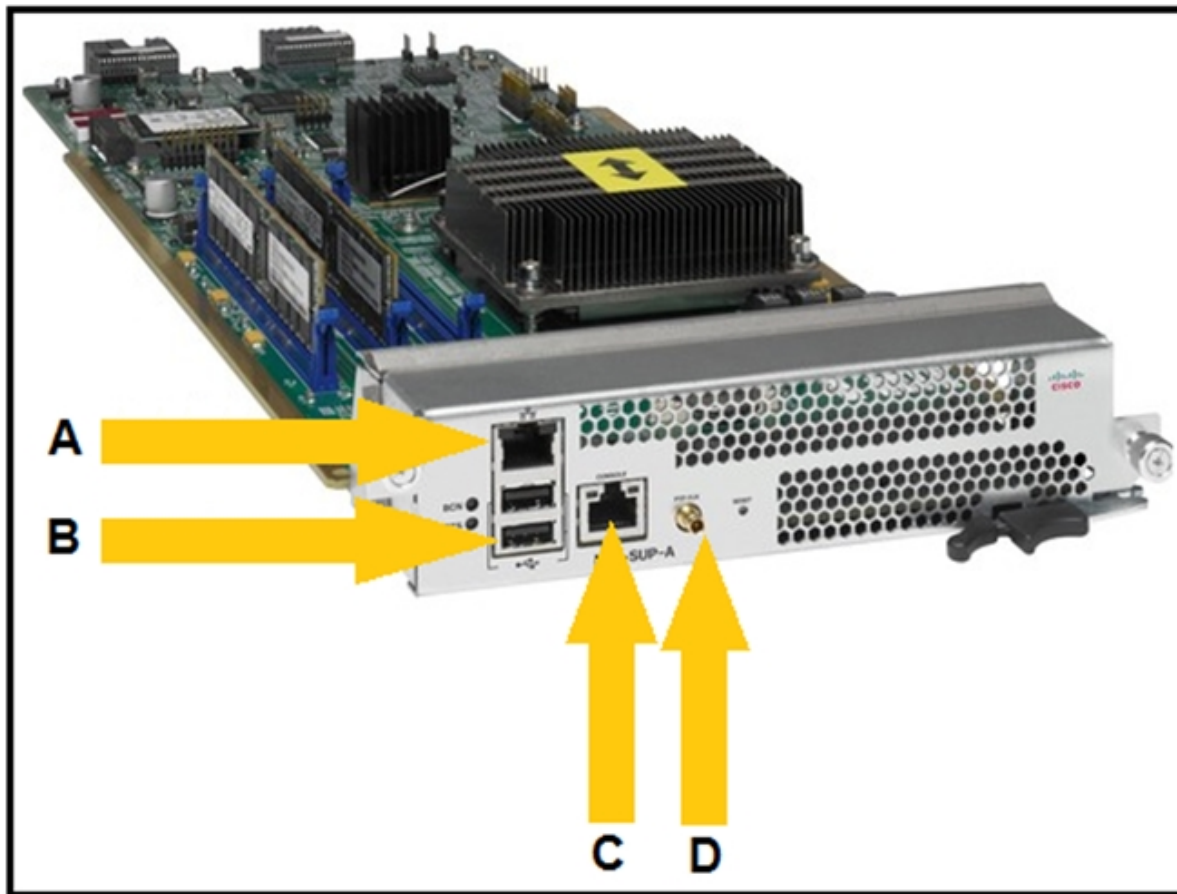
Select and Place:

Field A	EtherType or 802/3 length
Field B	Source MAC address
Field C	Payload
Field D	Destination MAC address

Correct Answer:

Field A	Field C
Field B	Field B
Field C	Field D
Field D	Field A

QUESTION 94



Refer to the exhibit. Which statement correctly identifies the hardware features on the Cisco Nexus 9500 Series supervisor A modules?

- A. A is 10/100/1000 Management port; B is USB port; C is Console port; D is external clock input
- B. A is Console port; B is USB port; C is 10/100/1000 Management port; D is external clock input
- C. A is Optical port; B is USB port; C is 10/100/1000 Management port; D is external clock input
- D. A is Console port; B is USB port; C is 10/100/1000 Management port; D is Diagnostic port

Correct Answer: B

QUESTION 95

Which two statements about the Ethernet media are true? (Choose two.)

- A. A twisted-pair cable system has each pair of wires twisted together to reduce electromagnetic interference.
- B. Compared to multimode fiber, the single-mode fiber is designed for shorter distances with higher cost.
- C. 40 Gigabit Ethernet twinax cables deploy Enhanced Quad Small Form Factor Pluggable (QSFP+) connectors.
- D. The twinax cables can be found in either a shielded twisted-pair or an unshielded twisted-pair variation.
- E. A passive twinax cable can carry an Ethernet signal over 5m.

Correct Answer: AC

QUESTION 96

Which two commands allow you to view the state of high availability between the two clustered Fabric Interconnects? (Choose two.)

- A. show cluster state extended
- B. show cluster extended-state
- C. show cluster HA status
- D. show cluster state
- E. show cluster HA state

Correct Answer: BD

QUESTION 97

Which statement about RAID is true?

- A. RAID is a scheme used to logically combine several independent disks to form an array or group of drives.
- B. RAID provides data redundancy with either odd parity or even parity.
- C. RAID drive group appears to the host computer as multiple physical storage units.
- D. RAID parity information can be stored across multiple RAID levels.
- E. RAID stores data in the array with data striping, encryption, and parity to organize the data among the disks.

Correct Answer: A

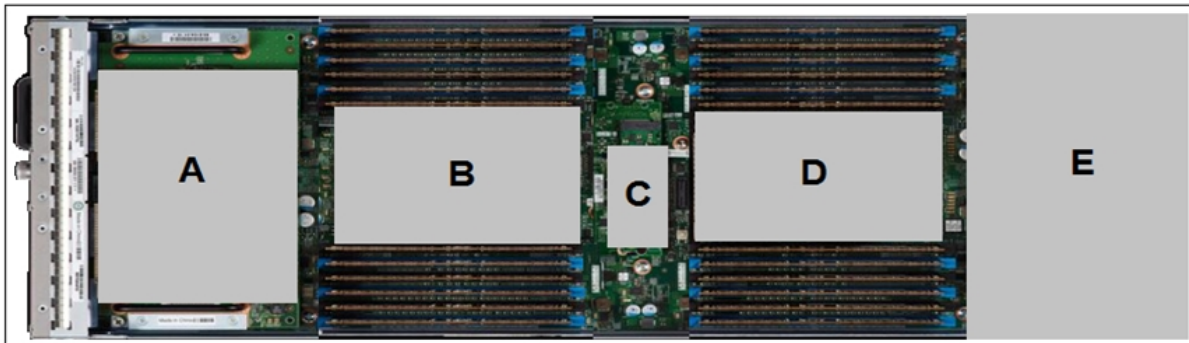
QUESTION 98

Which type of optics module is supported by a Cisco Nexus 7700 F4-Series 30-Port 100-Gigabit Ethernet Module?

- A. QSFP28
- B. SFP+
- C. Cisco CPAK
- D. QSFP+

Correct Answer: D

QUESTION 99



Refer to the exhibit. Which item does C represent?

- A. CMOS Battery
- B. Internal USB
- C. Mini Storage Connector
- D. mLOM Connector
- E. GPU

Correct Answer: C

QUESTION 100

Which two statements about PCIe are true? (Choose two.)

- A. The PCIe supports native hot-swap functionality.
- B. You can install a PCI Express x16 adapter into an x4 slot.
- C. The PCIe standard is a bus-based system in which all the devices share the same bidirectional, 32-bit or 64-bit, parallel signal path.
- D. The PCIe 4.0 standard doubles the transfer rate compared to PCIe 5.0.
- E. A link that is composed of four lanes is called an x4 link.

Correct Answer: DE

QUESTION 101

Which command-line interface mode is best described by this prompt?

Switch (config) #

- A. Local management mode
- B. EXEC mode
- C. Boot mode
- D. Global configuration command mode

Correct Answer: D

QUESTION 102

What are the two layers in the SAN hierarchy? (Choose two.)

- A. Protocol layer
- B. Fabric layer
- C. Connection layer
- D. Switch layer
- E. Storage layer

Correct Answer: CE

QUESTION 103

Which two blade servers support GPUs? (Choose two.)

- A. UCS B260 M4
- B. UCS B200 M4
- C. UCS B420 M4
- D. UCS B480 M5
- E. UCS B200 M5

Correct Answer: DE

QUESTION 104

Which two types of information does the show module NX-OS command display? (Choose two.)

- A. Module license information
- B. Module ports type
- C. Module IP address
- D. Module type
- E. Module status

Correct Answer: DE

QUESTION 105

Which two provide connectivity to Fabric Extenders? (Choose two.)

- A. UCS 6300 series
- B. UCS B-Series Servers
- C. UCS 6400 series
- D. UCS S-Series Storage Servers
- E. UCS E-Series Servers

Correct Answer: AC

QUESTION 106

Which two form factors are available in the Cisco UCS E-Series Servers? (Choose two.)

- A. EHWIC
- B. PVDM
- C. NIM
- D. VIC
- E. WIC

Correct Answer: AC

QUESTION 107

Which statement is true about SFP?

- A. SFP modules convert the serial electrical signals to serial analog signals and vice versa.
- B. The small form-factor pluggable (SFP) is a compact, hot-pluggable copper module transceiver.
- C. SFP modules offer a simple and effective way to connect a single network device to a wide variety of fiber

cable types.

D. SFP modules can be classified based on the working voltage and size.

Correct Answer: C

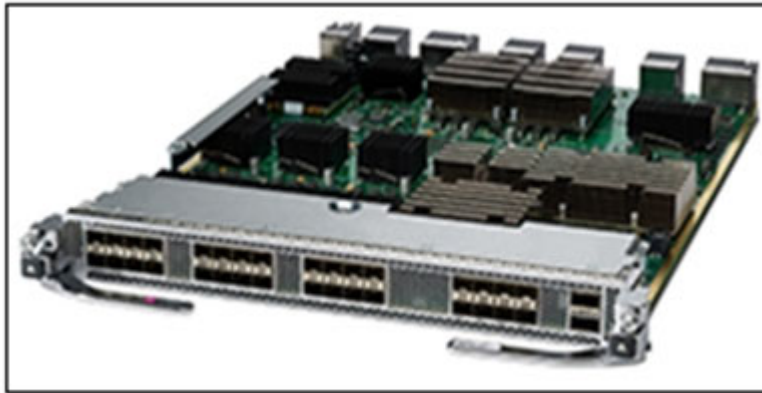
QUESTION 108

Which two statements about Cisco UCS 6454 Fabric Interconnect are true? (Choose two.)

- A. 1-RU 10/25/40/100/200/400 Gigabit Ethernet, FCoE, and Fibre Channel switch offers up to 32 ports.
- B. It hosts and runs Cisco Integrated Management Controller (CIMC).
- C. All Ethernet ports can support FCoE.
- D. Provides the management and communication backbone for the Cisco UCS 5108 Server Chassis and Cisco UCS B-Series Blade Servers only.
- E. Provides both the LAN and SAN connectivity for all servers within its domain.

Correct Answer: CE

QUESTION 109



Refer to the exhibit. What is the name of this Cisco MDS 9700 Series network module?

- A. Cisco MDS 9700 48-port 16-Gbps switching module
- B. Cisco MDS 9700 48-port 32-Gbps Fibre Channel switching module
- C. Cisco MDS 48-Port 10-Gbps Fibre Channel over Ethernet module
- D. Cisco MDS 24-/10-port SAN Extension module

Correct Answer: D

QUESTION 110

Which two statements about Cisco UCS S3260 Storage Server are true? (Choose two.)

- A. AMD EPYC 7000 series processors, with up to 32 cores per socket
- B. Up to 1 TB of Intel Optane DC Persistent Memory
- C. It is in a compact 2-RU form factor.
- D. Support for the Cisco 12-G 9460-8i PCIe SAS RAID controller
- E. Massive 840-TB data storage capacity

Correct Answer: DE

QUESTION 111

A company wants to build a data center infrastructure which can provide up to 99.982% uptime availability per

year. Which ANSI/TIA-942 data center tier meets the requirement?

- A. Redundant-distribution site infrastructure
- B. Redundant-capacity component site infrastructure
- C. Concurrently maintainable site infrastructure
- D. Basic site infrastructure

Correct Answer: C

QUESTION 112

Which two statements are true for the Ethernet 802.3 standard? (Choose two.)

- A. An 802.3 Ethernet frame is 68 to 1518 bytes in length.
- B. CSMA/CD eliminates collisions for the switched LAN where multiple collision domains reside.
- C. It defines physical layer and data link layer protocols.
- D. The IEEE 802.3ab standard defines 10 Gigabit Ethernet over unshielded twisted-pair (UTP).
- E. Network layer protocol is carried in the payload field.

Correct Answer: BC

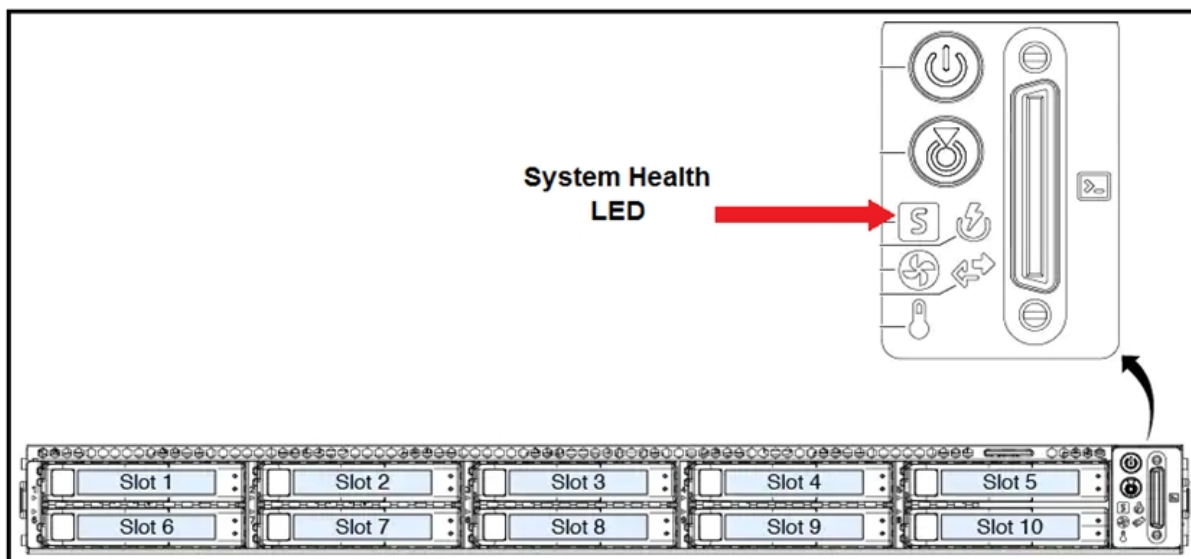
QUESTION 113

Which RAID level fault tolerance allows two disk failures?

- A. RAID 1
- B. RAID 4
- C. RAID 5
- D. RAID 6

Correct Answer: D

QUESTION 114



Refer to the exhibit. Which two faults can occur if the System Health LED is in a steady amber state? (Choose two.)

- A. At least one DIMM is faulty.

- B. Major fault with CPU
- C. Major fault with the system board
- D. CPU mismatch
- E. Major fault with memory DIMM

Correct Answer: BE

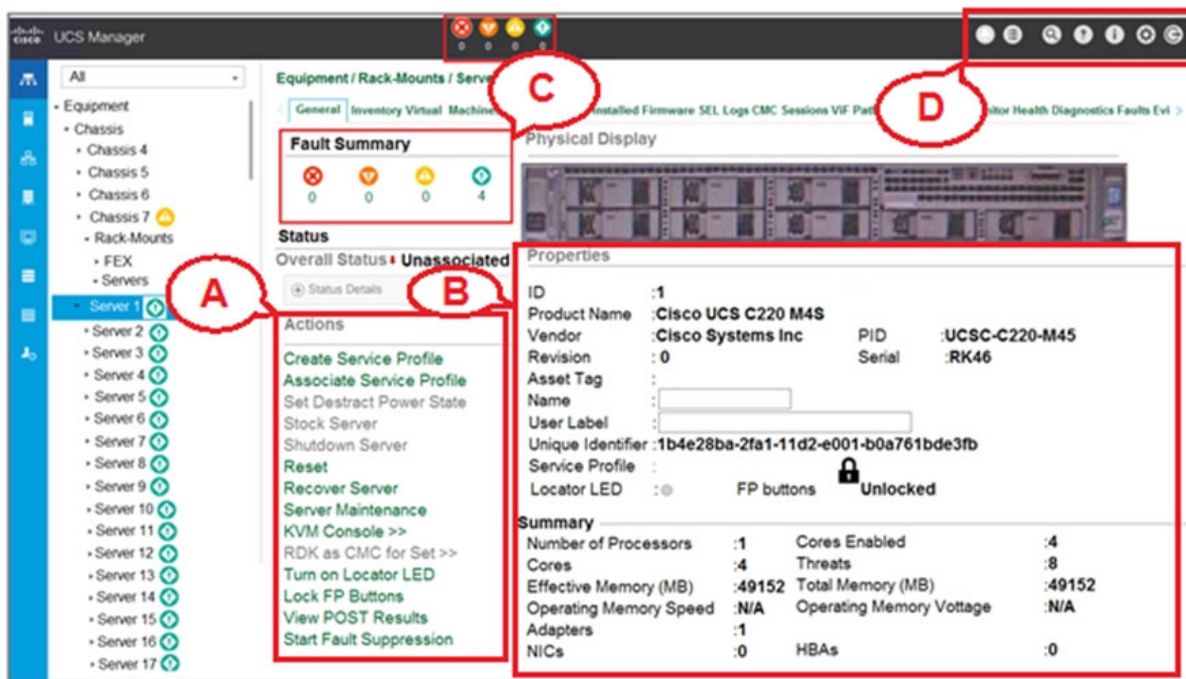
QUESTION 115

Which two statements are true about the Cisco UCS C4200 Rack server and UCS C125 M5 compute node? (Choose two.)

- A. 8 NVIDIA SXM2 V100 32G modules with NVLink interconnect
- B. AMD EPYC 7000 series processors, with up to 32 cores per socket
- C. 2666-MHz DDR4 memory and 24 DIMM slots for up to 3 TB of total memory
- D. Optional dual USB ports for increased storage or boot drive capacity
- E. Over 45 TB of storage, with up to six small-form-factor 2.5-inch direct-attached drives per node

Correct Answer: DE

QUESTION 116

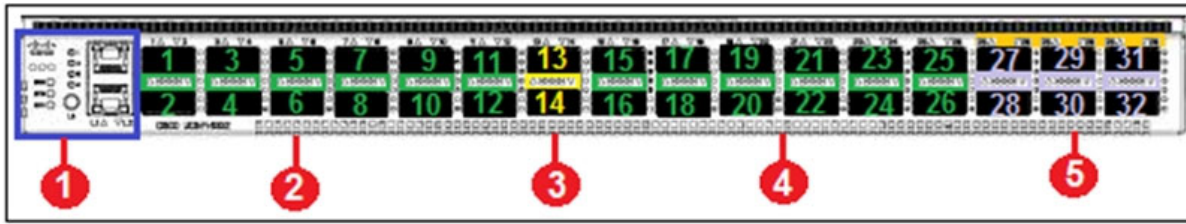


Refer to the exhibit. Which item list all available functions that can be perform to the server?

- A. A
- B. B
- C. C
- D. D

Correct Answer: A

QUESTION 117



Refer to the exhibit. Which item does 3 represent?

- A. Operate as 40-Gbps QSFP+ ports or as 4 × 10-Gbps SFP+ breakout ports
- B. Operate as 40-Gbps QSFP+ ports, and support QSA adapters to provide 1-Gbps to 10-Gbps operation
- C. Operate as port lane switch button, port lane LEDs, and Layer 1 and Layer 2 ports.
- D. Operate as dedicated 40-Gbps, QSFP+ uplink ports.

Correct Answer: D

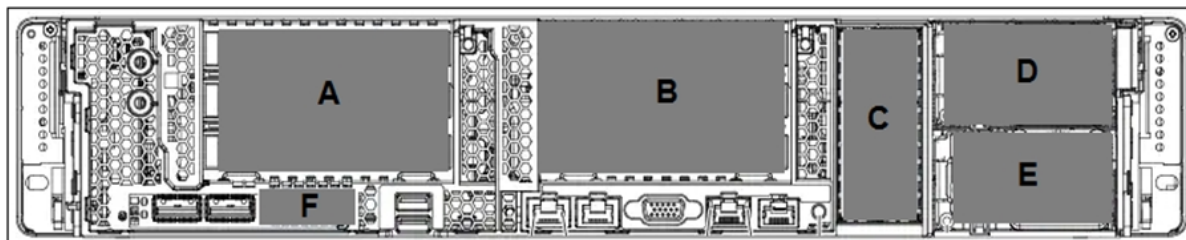
QUESTION 118

Which two statements about FCoE are true? (Choose two.)

- A. Allows Fibre Channel and Ethernet networks to share a single, integrated infrastructure.
- B. Encapsulates Ethernet frames into Fibre Channel frames, which allows them to run alongside traditional IP traffic.
- C. Increases capital costs due to the difficulty to manage.
- D. Consolidates I/O traffic in the data center.
- E. It allows Ethernet traffic to run over a Fibre Channel infrastructure.

Correct Answer: AD

QUESTION 119

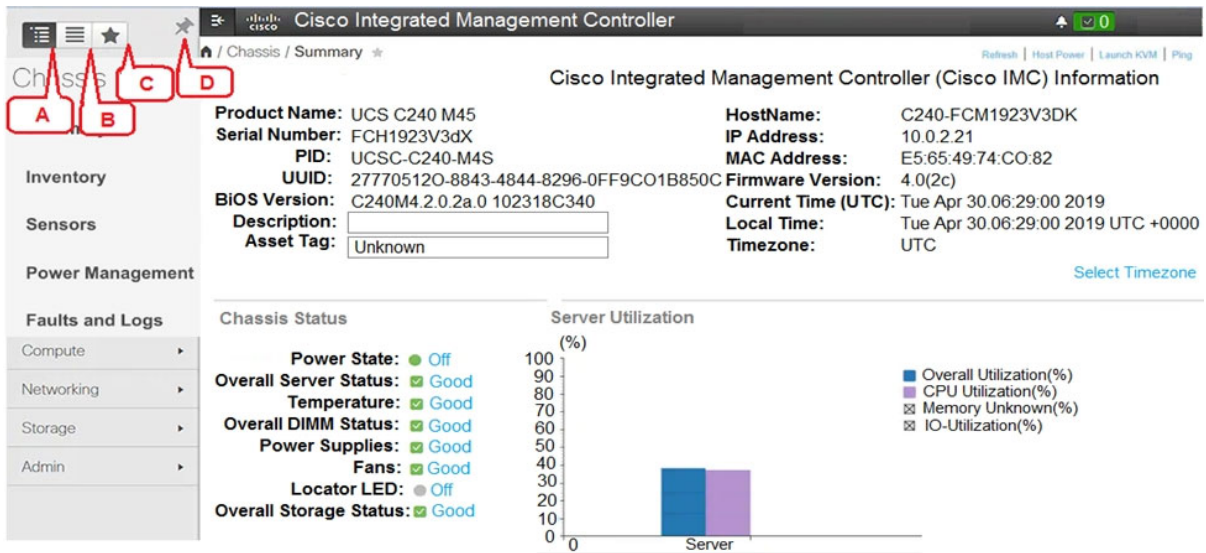


Refer to the exhibit. Which item does B represent?

- A. mLOM
- B. Rear 2.5-inch drive bays
- C. PCIe Riser 1
- D. PCIe Riser 2
- E. Power Supply

Correct Answer: D

QUESTION 120

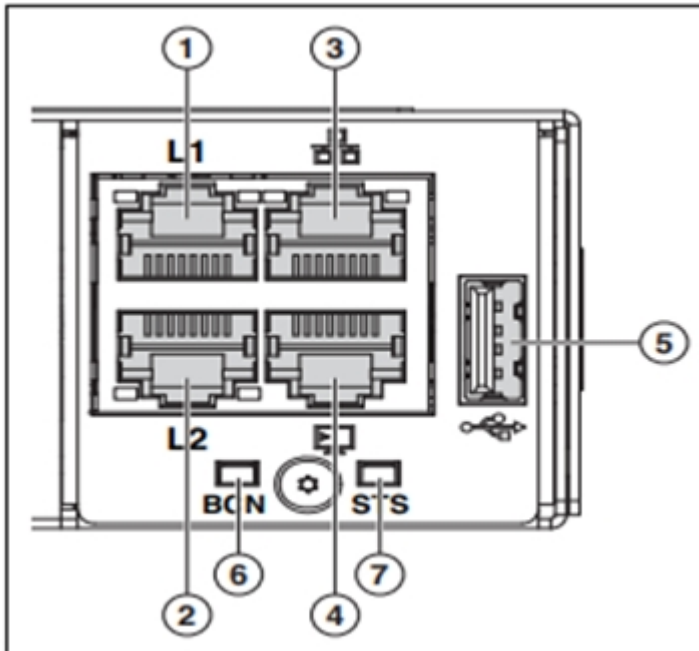


Refer to the exhibit. Which item does D represent?

- A. Pin icon (prevents Navigation pane from sliding)
- B. Favorite icon (make any specific work pane in the application as your favorite)
- C. To view the Navigation pane
- D. Index Icon (view listing in alphabetical order)

Correct Answer: A

QUESTION 121



Refer to the exhibit. What does it mean when item 7 (System Status LED) has a blinking red status?

- A. Major fault with the system board
- B. Power shut down by software

- C. Secure boot validation has failed
- D. Power on Self-Test (POST) failed
- E. Major fault with memory DIMM

Correct Answer: D

QUESTION 122

Which SAN protocol uses Ethernet network without IP encapsulation?

- A. iFCP
- B. FCP
- C. iSCSI
- D. FCoE
- E. FC

Correct Answer: D

QUESTION 123

During the auto-sync firmware upgrade process, what should be your initial input entered once the Fabric Interconnect boots up?

- A. console
- B. gui
- C. upgrade firmware
- D. auto-sync

Correct Answer: A

QUESTION 124

Storage virtualization is commonly used for SANs in data centers to scale out the storage resources. The common methods of storage virtualization include array-based storage virtualization. What are the other two methods? (Choose two.)

- A. Host-based storage virtualization
- B. Hypervisor-based storage virtualization
- C. Embedded-based storage virtualization
- D. Switch-based storage virtualization
- E. Network-based storage virtualization

Correct Answer: AE

QUESTION 125

Which Cisco MDS 9700 Series platform supports the Supervisor-1E module?

- A. Cisco MDS 9706
- B. Cisco MDS 9709
- C. Cisco MDS 9710
- D. Cisco MDS 9718

Correct Answer: D

QUESTION 126

Which two statements are true about system controllers of Cisco Nexus 9500 Series? (Choose two.)

- A. They provide centralized arbitration to the system fabric for all line cards.
- B. They control the Layer 2 and Layer 3 services.
- C. The Cisco Nexus 9500 Series switch software, Enhanced NX-OS, runs on the system controllers.
- D. They are used to offload the internal non-data-path switching and management functions from the supervisor engines.
- E. The Cisco Nexus 9500 Series supports redundant system controllers.

Correct Answer: DE

QUESTION 127

What do the small form-factor, x86 64-bit blade servers reside in Cisco branch-office router?

- A. Cisco UCS E-Series Servers
- B. Cisco UCS S-Series Storage Servers
- C. Cisco UCS Blade Servers
- D. Cisco UCS C-Series Rack-Mount Servers

Correct Answer: A

QUESTION 128

Which transceiver can support 400 Gigabit Ethernet?

- A. QSFP-DD
- B. QSFP+
- C. QSFP28
- D. SFP-DD

Correct Answer: A

QUESTION 129

Which two external features are in the Cisco UCS C125 M5 Compute Node? (Choose two.)

- A. PCIe Risers
- B. USB 3.0 port
- C. Supercap unit
- D. SD card slots
- E. SAS/SATA drives

Correct Answer: AB

QUESTION 130

With which data center type can a company lease the equipment and infrastructure?

- A. Managed services data center
- B. Colocation data center
- C. Green technology data center
- D. Enterprise data center

Correct Answer: A

QUESTION 131

How many wires does each PCIe lane have?

- A. Two
- B. Four
- C. Eight
- D. Sixteen

Correct Answer: B

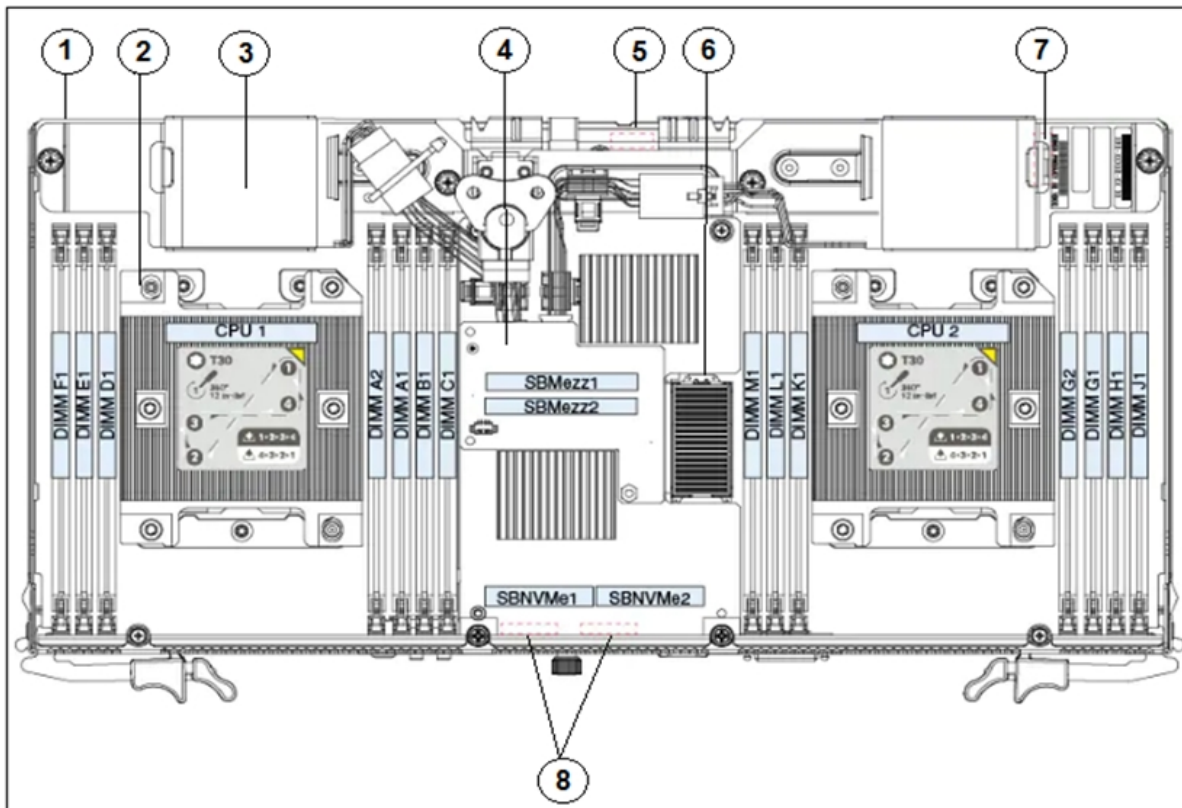
QUESTION 132

Which statement is true about QSFP?

- A. The four 10 Gbit/sec channels that QSFP+ supports can be combined into a single 40 Gigabit Ethernet link.
- B. QSFP-DD stands for Quad Small Form Factor Pluggable Double Distance.
- C. The QSFP+ offers higher data speed than QSFP28.
- D. 100GBASE-SR4 supports a much longer distance than 100GBASE-LR4.

Correct Answer: A

QUESTION 133



Refer to the exhibit. What item does 6 represent?

- A. Trusted platform module (TPM) socket
- B. RAID supercap connector
- C. RTC battery CR2032 socket
- D. Mezzanine-style connector for optional I/O expander module

Correct Answer: D

QUESTION 134

Which statement is true about cloud deployment models?

- A. A public cloud is typically infrastructure used by a single organization.
- B. Public clouds are more expensive than private clouds.
- C. Hybrid cloud supports multiple organizations sharing computing resources that are part of a community.
- D. Public clouds are less secure than private clouds.

Correct Answer: C

QUESTION 135

Which NX-OS command is used to display the boot variable configuration?

- A. **display boot**
- B. **open boot**
- C. **show config**
- D. **show boot**

Correct Answer: D

QUESTION 136

Which two firmware components does the Host Upgrade Utility upgrade? (Choose two.)

- A. Fabric Interconnect firmware
- B. Cisco UCS Infrastructure software
- C. Cisco UCS Manager
- D. CIMC
- E. System BIOS

Correct Answer: DE