



**YANMAR**

TRACTOR

# YM357A

57HP



**Head Office**

**YANMAR AGRIBUSINESS CO.,LTD.**

Umeda Gate Tower  
1-9, Tsuruno-cho, Kita-ku, Osaka  
530-0014, Japan  
[www.yanmar.com/jp/](http://www.yanmar.com/jp/)

**Headquarters**

**YANMAR S.P. CO., LTD.**

Ladkrabang Industrial Estate  
115 Soi Chalongkrung 31 Lamplaiw,  
Ladkrabang, Bangkok 10520 Thailand  
T : +66 2326 0700-7  
F : +66 2326 0709  
[www.yanmar.com/th/](http://www.yanmar.com/th/)

Printed 2019.01

**SMARTASSIST**



# GO *NEXT*

*Take agriculture to the next level*

Fly through the workday with the YM's exceptional power and performance, while its strength and durability will keep it at your side season after season.

Drive your efficiency to the limit with our advanced technological solutions.

Meet YANMAR's YM Series tractor.

Reap a future that looks to a new agriculture beyond imagination.





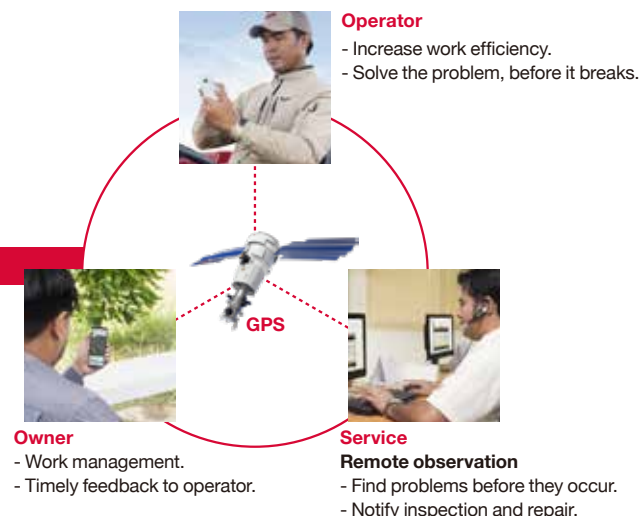


## Farm smarter with high-tech solutions

Using YANMAR's advanced technology, farming has never been easier. Check your fields from your smartphone.

### Including SMARTASSIST Remote as standard

Geolocation by GPS and other sensors lets you know exactly how and where your tractor is working. Reduce downtime and errors to save money.



Watch the movie

**SMARTASSIST**



Check location and work status at a glance.



Measure work area accurately.



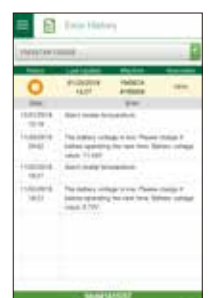
Set location and work period in advance.



Easily inspect work logs.



See the hours worked on a graph.



View alerts as they happen.





## Powerful and fuel-efficient



Watch the movie

YANMAR's original combustion technology gets the most out of every drop of fuel for a powerful engine that is long lasting.

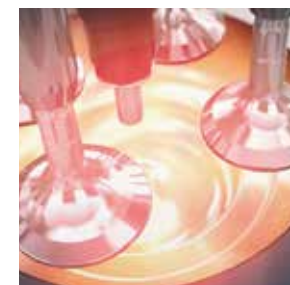
### Direct-injection diesel engine

Developer of the world's first small diesel engine, YANMAR's extensive fuel injection and combustion technology comes together in this powerful and reliable package. Whether plowing or puddling, the YM tractor offers excellent fuel efficiency and outstanding durability. Try the YM357A's three-liter, long-stroke engine for superior power and reliability.



#### Monoplunger fuel injection pump

The pump supplies fuel at uniformly high pressure to the fuel injector of each cylinder, for even combustion, smoother power and less vibration.



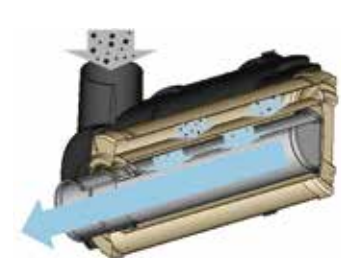
#### Fuel injector

The precision designed injector nozzle atomizes the fuel at high pressure for introduction to the cylinder.



#### Original combustion chamber design

The combustion chamber is specially shaped to promote an even fuel-air mixture and complete combustion for high power and low emissions.



#### Two-stage air filter

Two-stage filtration removes grit and dust from the air intake to prevent piston ring wear.





# Work faster

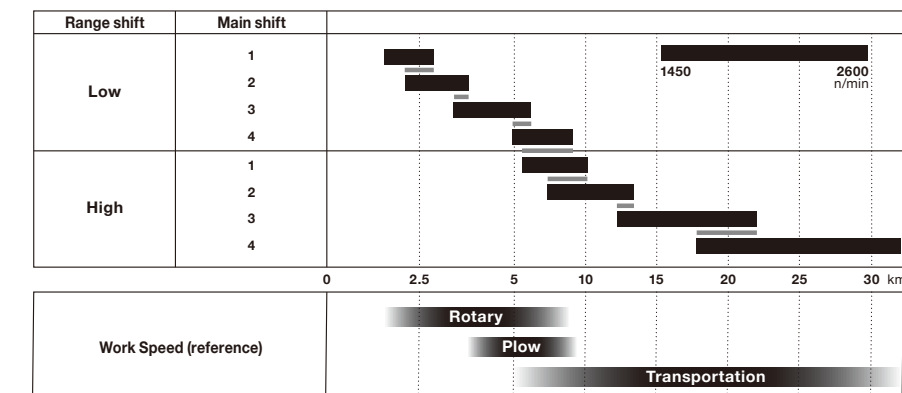


Watch the movie

Get more done with faster, more accurate operation.

## Get more done with faster, more accurate operation.

Gear ratios widely overlap all speed ranges so that you can get the best torque for your work speed, using less fuel and saving you money.

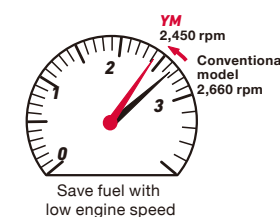


## Choose the right PTO speed for the job

The PTO speed of YM tractor is optimized with the rated 540 rpm at lower engine speed. With ensuring a beautiful finish of rotary tillage, pursue to highly balancing faster work and fuel saving.

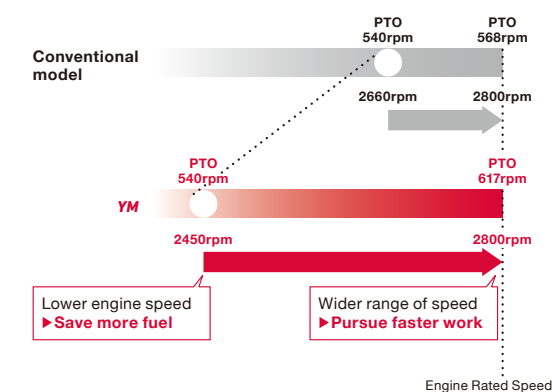
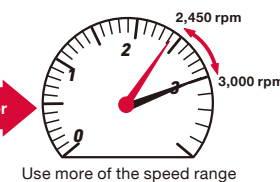
### Type of use 1 : Economy PTO

Use of standard PTO 540 rpm with lower engine speed allows the operator not only to realize a beautiful finish of rotary tillage, but also to save more fuel.



### Type of use 2 : High work efficiency

Wider range of engine speed (PTO speed) provides the operator with options how to set optimum working speed for the job. Increase engine speed to pursue higher work efficiency with ensuring a beautiful finish.



### 2 Speed PTO

From low-speed rotary tillage to high-speed puddling, select the right PTO speed for the job.





## Paddy, dry field, or hauling



Watch the movie

The YM is a versatile tractor that has no equal in the demanding conditions of Southeast Asian agriculture.

### Newly designed rotary tiller

The innovative design means that even tilling at high speed causes little loss of power as most soil does not travel into the rotary, while the long stroke of the rear cover rakes the soil for a more beautiful finish.



### Long rear cover

The rear cover is longer by 15% than the conventional one, with the broader raking surface giving a beautiful finish.



### Ground clearance

Great clearance is the key to powering on in muddy conditions or passing over crops without damaging them.



### Hydraulic lift capacity

Even large and heavy implements like plows or planters can be raised with ease to perform wide range of work.

\*at lower link end.



### Tight turns

Turn the wheels all the way over to their maximum 55 degrees for tight turns at the end of the row and those tough corners.



### Drawbar Hitch

Equipped with a drawbar (clevis type) as standard for hauling and towing a variety of loads.



# Everything you need to get the job done

Easy to operate with comfort  
that lets you spend long hours  
working.



## Full synchromesh transmission

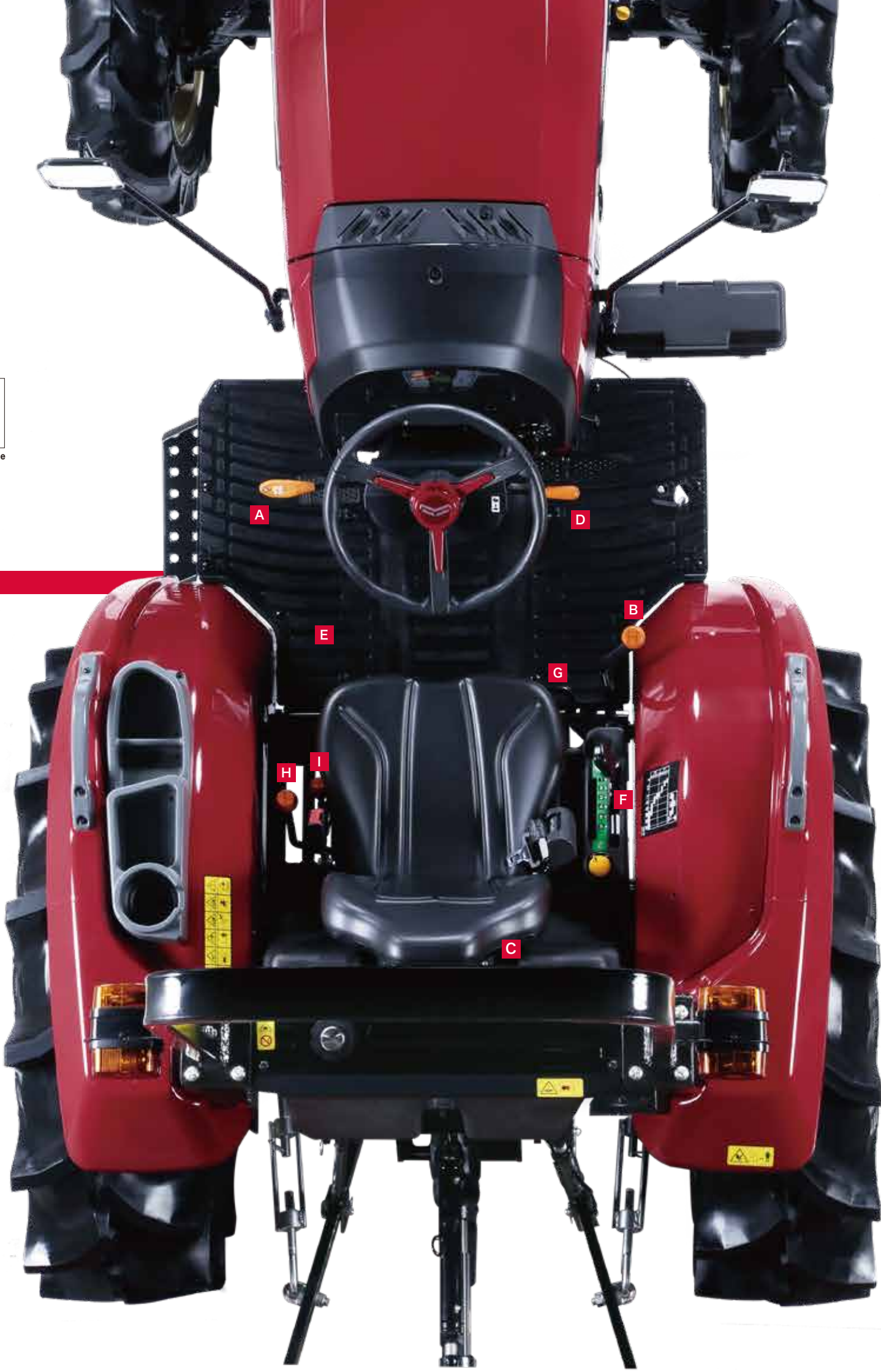
A full synchromesh transmission allows you to smoothly change direction and speed without gear noise, even when the tractor is still moving, just by shifting the reverser lever and main shift lever.



**A Synchronized reverser lever**  
Change direction, simply by shifting the lever conveniently located by the steering wheel, to back out of tight corners.



**B 4 speed synchronized main shift lever**  
Select the best speed for the job by combining the smooth changing synchronized main shift with the 2 speed range shift.



**C Deluxe seat with suspension**  
Shift forwards or back with a convenient lever and enjoy stepless adjustment of seating suspension for comfort that lets you work all day.



Stepless adjustment knob behind seat back.



**D Fully hydraulic power steering**  
Even heavy going muddy paddies are no problem with hydraulic power steering driving you through the toughest turns.



**E Flat deck**  
A flat deck lets you slide smoothly into the seat while offering the operator the comfort of a broad and stable work platform.



**F 3-Point hitch control lever**  
Put your implement exactly where you want it with highly responsive and fine-tuned depth control.



**G Differential lock pedal**  
The pedal locks the differential to keep both wheels moving and help you get through difficult paddies.



**H 2 speed range shift lever**  
The 2 speed range shift can switch between high and low speeds for use in a wide range of applications from tilling in paddy fields to traveling between fields.



**I Four-wheel drive lever**  
A simple lever lets you switch between two and four-wheel drive for greater traction.





## Quality that's built to last

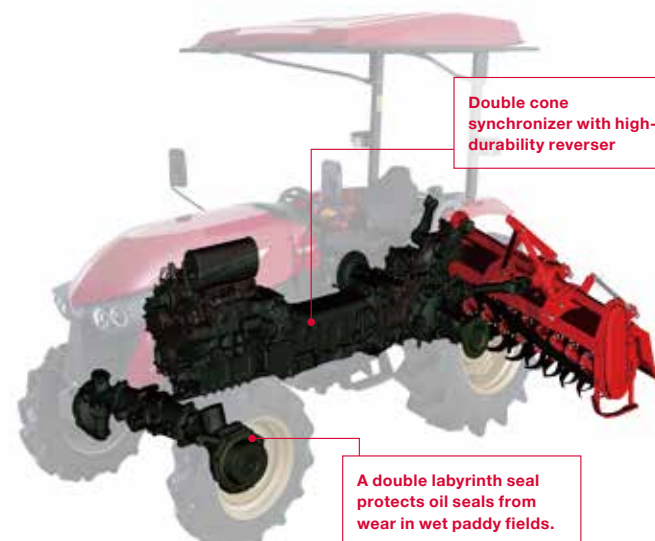


Watch the movie

Drivetrain and core parts are made with high-durability casting for long-lasting strength.

**Engine, transmission and rotary are all designed by YANMAR**

The powertrain of the engine at the heart of the tractor, the transmission and the rotary gearbox it drives, are made tough with highly durable casting. Because Yanmar designs these core components itself, they are built to work together for maximum power transfer. With no one component subject to excessive stress, durability is greatly increased.



### Dedicated hydraulic clutch for PTO

The hydraulic clutch was chosen for its superior resistance to wear and high durability. It is also independent of the travel clutch and isolates it from stress or damage from farm work.



### One-touch PTO button

Stop the PTO at the touch of a button to prevent damage to the PTO drive shaft when raising implements. There is no need to stop the tractor.



■ Other Standard Equipment



**High-capacity fuel tank**  
A capacity of 50 liters lets you work all day without having to stop for refueling.



**Lockable fuel cap**  
Secure your valuable fuel supply.



**Side mirrors**  
Right and left side mirrors are standard.



**High visibility LCD meter**  
The intuitive LCD display lets you see what you need, when you need it, even in daylight.



**Projector-type headlight**  
Low and high beam let you pierce through the darkness to keep working after the sun goes down.



**12 V accessory socket**  
Charge smartphones and other devices while on the go.  
(Cigar USB Socket not included)



**ROPS**  
Yanmar provides ROPS as standard to reduce the chance of injury in the event of tractor roll over.



**Console**  
Convenient storage for drinks, devices and whatever else you need.



**Seat belt**  
The standard-fitted seatbelt helps prevent injury in the even of an accident.



**Tool box**  
No need to head back for tools when this toolbox is right near your feet.  
(Tools not included)



**Canopy**  
A canopy protects the operator from the harsh elements.



**Wide Step**  
A wide step allows the operator to get on / off the tractor smoothly.

■ Easy Maintenance



**Hood access**  
The gas-damper equipped hood opens to a full 80 degrees for easy access.



**Grease fittings**  
Allocating greasing nipples to appropriate locations. Periodical refilling of grease maintains the life of your machine.



**Large fuel / water separator**  
Prevents water/moisture and dust from entering the engine.



**Large-capacity maintenance-free battery**  
Gives you the power to get your working day started. Consult the battery indicators for any necessary maintenance.



**Engine oil / engine oil filter**  
Well accessible without removing any surrounding parts like side covers. Assisting easy inspection of engine oil.

■ Genuine Spare Parts



Yanmar's genuine spare parts support you for long-machine life and maximize the work performance for long time.



**Long-life transmission fluid TF500T**  
A long life of up to 600 hrs, means you save time and money on transmission fluid changes. (Sold separately)



**Watch the movie**  
Scan this QR code to access the Yanmar genuine parts video on Youtube.

■ Dealer options



**Front weight (1A8253-10300)**  
**Front bracket (1A8253-10200)**  
Mount up to five 30kg weights for added stability.



**Rear wheel weight (1A8253-34990)**  
Mount any combination of one 20kg, and two 25kg weights for a maximum of 70 kg, on the rear wheels for added traction.



**Rear working light (1A8253-54100)**  
Light up the night with this rear-mounted lamp.





More information

## ROTARY

Used : Tillage / Stamping / Reversing / Leveling

Model Name			Y1800RH	Y1900RH	Y2000RH
Transmission system	Gear Chamber	Type	Pinion gear bevel straight type		
		Ratio	14T / 27T		
	Chain Chamber		The side chain		
Dimension : width × length × height		mm	1971×952×1026	2071×952×1026	2171×952×1026
Weight		kg	325	335	345
Width of area work		mm	1770	1870	1970
Type of blade			L&C shape		
Quantity of blade	Left	pieces	27	27	30
	Right		27	27	30
Speed (Blade axle / PTO axle)		rpm	237 / 540		
Applied Tractor horse power		HP	51 - 57		
Work Speed (Reference)		km/h	2 - 7		



## POLY PLOW

Used : Tillage / Stamping / Reversing / Leveling

Model Name		Y2460PDK	Y2450PDK	Y2460PDL	Y2260PDL,W	Y2450PDL
Disc size	inch	24	24	24	22	24
Quantity of disc	pieces	6	5	6	6	5
Width×Length×Height	mm	1510×2130×1095	1510×2130×1095	1129×2200×950	980×2120×950	2040×2250×990
Weight	kg	445	420	416	224	395
Working Depth	mm	150 - 200	150 - 200	150 - 250	120 - 150	200 - 250
Working Width	mm	1205	1205	1500	1500	1550
For soil		Any soil	Any soil	Any soil	Any soil	Any soil
Applied Tractor horse power	HP	39 - 51	39 - 51	45 - 51	45 - 51	45 - 51
Work Speed (Reference)	km/h	3 - 8	3 - 8	3 - 8	3 - 8	3 - 8



## DISC PLOW

Used : Tillage / Reversing

Model Name		Y2430DPK	Y2440DPK	Y2240DPL,W	Y2430DPL
Disc size	inch	24	24	22	24
Quantity of disc	pieces	3	4	4	3
Width×Length×Height	mm	1235×2335×1200	1415×2810×1265	920×2300×1050	1020×2300×1100
Weight	kg	475	560	305	389
Working Depth	mm	200 - 250	200 - 250	150 - 200	200 - 250
Working Width	mm	860	1080	1420	1220
For soil		Any soil	Any soil	Any soil	Any soil
Applied Tractor horse power	HP	39 - 57	39 - 57	39 - 57	45 - 57
Work Speed (Reference)	km/h	3 - 8	3 - 8	3 - 8	3 - 8



## FRONT BLADE

Used : Field maintenance / Movement of soil and compost

Model Name			Y1820FBG
Applied Tractor Model	HP		YM357A
Gross Weight	kg		385
Working Width	mm		1800
Height of Blade	mm		526
Minimum Ground Clearance	mm		314
Hydraulic Cylindere mention	Rod Diameter	mm	45
	Bore Diamiter	mm	55
	Stroke	mm	485
Work Speed (Reference)	km/h		3 - 4



## Main Specifications

Model				YM357A
Engine	Maker			YANMAR
	Model			4TNV94L
	Type			4 Cylinders, Direct Injection, Vertical, Water-Cooled, Diesel
	Number of Cylinders			4
	Bore and Stroke		mm	94 x 110
	Total Displacement		L	3.054
	Gross Power		kW (HP) / rpm	42.4 (57.0) / 2400
	Fuel Tank		L	50
Dimensions	Overall Length (without 3-point hit)		mm	3380
	Overall Width		mm	1580
	Overall Height		mm	2570
	Wheel Base		mm	1970
	Min. Ground Clearance		mm	425
	Tread	Front	mm	1252 (Standard) / 1404
		Rear	mm	1238 (Standard) / 1320
Weight			kg	1790
Traveling System	Tire	Front	inch	8 - 18
		Rear	inch	13.6 - 26
	Clutch			Dry, Single
	Brake			Mechanical, wet disk
	Steering			Hydrostatic power
	Main shift			synchronized (4stage)
	Reverser			synchronized Reverser
	Number of shift			8 forward and 8 reverse
	Travel speed	Forward	km / hr	2.6 - 29.4
		Reverse	km / hr	2.6 - 29.3
Hydraulic Unit	Hydraulic Control System			Position Control
	3-Point Hitch			Category 1
	Max. Lift Force	at lower link end	kN (kgf)	14.2 (1450)
		24 inch behind	kN (kgf)	12.2 (1250)
Power Take off (PTO)	Type			independent
	Shaft Size			SAE 1 - 3 / 8, 6-Splines
	Gear 1		PTO speed / engine rpm	540 / 2096
	Gear 2		PTO speed / engine rpm	740 / 2064

Note: All technical data, measurement and weight are approximate, and the manufacturer has the right to make alteration without prior notice.

