



03 | 2016

Media enclosures Communications and multimedia technology at a glance

Media enclosures

Multimedia at a glance

The rapid development of new communications and information technologies means that ever more media and communication devices are to be found in homes.

Hardly anyone wants to do without the benefits that technology offers. A structured cabling arrangement is thus indispensable for a future-proofed and well-ordered installation.

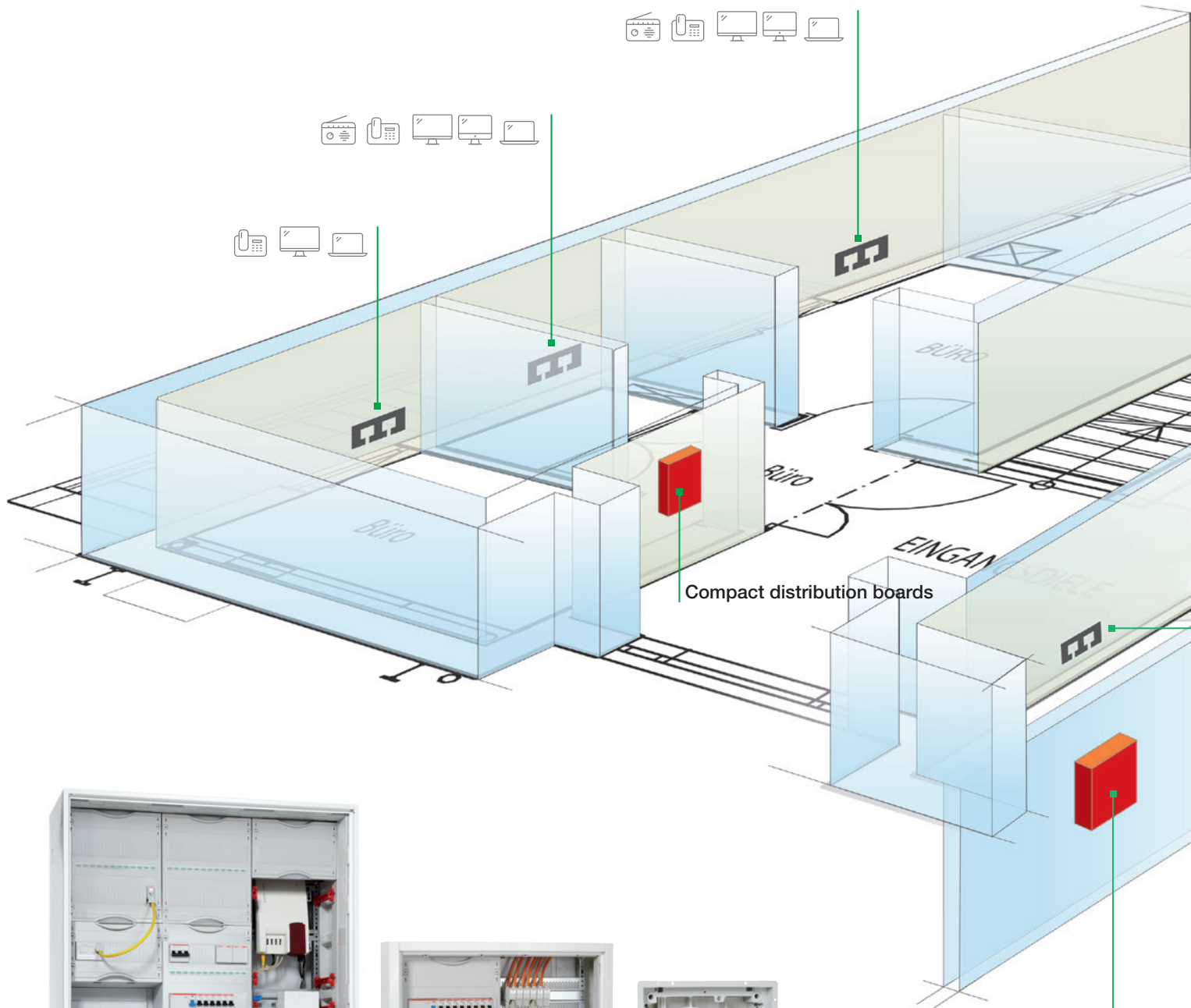
The new ABB STRIEBEL & JOHN multimedia enclosures and telecommunication panels help you achieve this goal. You have all your media applications at a glance with the central assembly of media and communications technology in meter and distribution cabinets.





The professional installation solution

Use case: residential building



Compact distribution boards

Meter cabinet



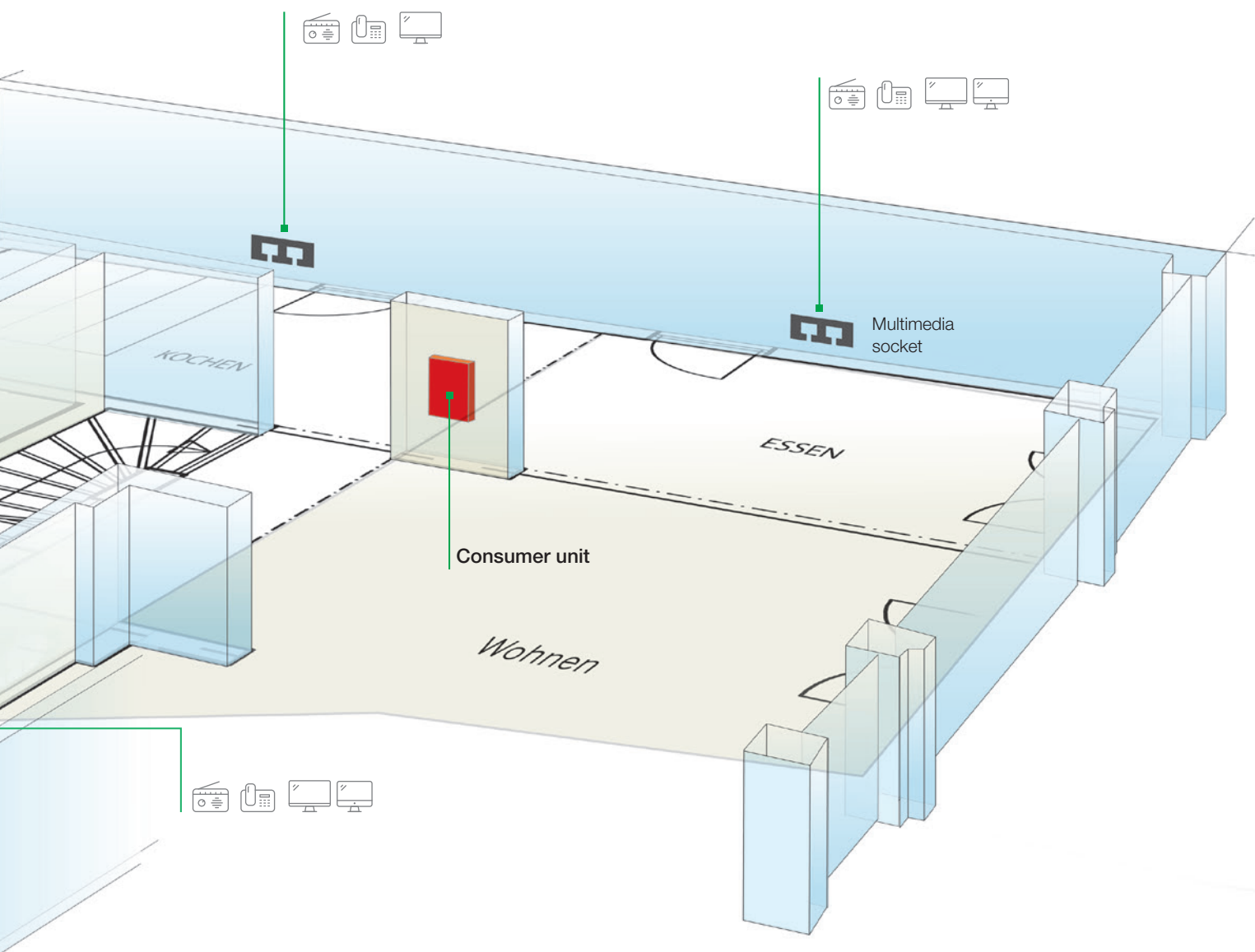
Meter cabinet



Compact distribution boards



Consumer unit



The benefits of the multimedia enclosures

- Clear and central arrangement of the communication systems
- Quick mounting of devices without drilling
- Sufficient space for future communication devices
- Simple power supply to the devices
- Tidy cabling using wire holders (wire holders included in the scope of delivery)
- Improved tidiness and security

Media enclosures

Consumer units of the UK500 series



Technical specifications

- IP30 ☐▽**
- Available as multimedia enclosure in the sizes UK530MV and UK540MV and/or as wall box in the sizes UZM530MV and UZM540MV
- Doors with ventilation holes available as accessory, required at ambient temperatures from 25°C and an expected power loss > 15W for UZM530MV and/or > 17W for UZM540MV
- For complete multimedia enclosures UK530MV and UK540MV the door with ventilation holes is included in the scope of delivery
- Upgradeable for hollow-wall mounting using UZ90P4
- Wall box:
 - torsionally rigid, shatter-resistant, flame-resistant, low-halogen plastic
 - with cable strain relief rail
 - with removable cable insertion slides
- Wall grips
- Can be upgraded for surface-mounting or partially recessed mounting or on wall mounting
- Design doors available as accessories
- Protection class depends on type and installation of equipment

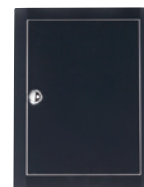
*In connection with UZ90P4



media line



standard



colour line



vision line



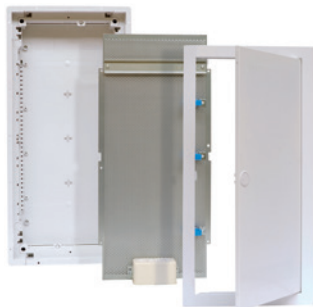
art line



addition line

Media enclosures

Consumer units of the UK500 series



UK530MV



UZM530MV

Article	H x W x D in mm	Type	Ord. no.	Price
Flush-mounted consumer unit with trim frame and door				
Wall box with perforated sheet steel mounting plate, wire holders, DIN rail, wall grips, double socket	Niche dimensions	585 x 350 x 95	UK530MV	2CPX030839R9999
	Wall cut-out dimensions	558 x 327 x 88		
	Mounting plate dimensions	447 x 277 x 1.5		
with euro-plug insert, trim frame and door with ventilation holes	Niche dimensions	710 x 350 x 95	UK540MV	2CPX030840R9999
	Wall cut-out dimensions	638 x 327 x 88		
	Mounting plate dimensions	572 x 277 x 1.5		

Flush wall box without door				
With perforated sheet steel mounting plate, wire holders, DIN rail and wall grips	Niche dimensions	585 x 350 x 95	UZM540MV	2CPX030986R9999
	Wall cut-out dimensions	558 x 327 x 88		
	Mounting plate dimensions	447 x 277 x 1.5		
	Niche dimensions	710 x 350 x 95	UZM540MV	2CPX030986R9999
	Wall cut-out dimensions	683 x 327 x 88		
	Mounting plate dimensions	572 x 277 x 1.5		

> For accessories, see page 10 and 11
 > For general accessories, see Main Catalogue 2016



BL530L

Article	To be used with...	Internal Trim frame dimension	External Trim frame dimension	Type	Ord. no.	Price
		H x W x D in mm	H x W x D in mm			
Trim frame with door (complete version) Colour: white, RAL 9016 sheet steel, powder coated	UK51...	282 x 297 x 33	352 x 367 x 9	BL510	2CPX030853R9999	
	UK52...	407 x 297 x 33	477 x 367 x 9	BL520	2CPX030854R9999	
	UK53...	532 x 297 x 33	602 x 367 x 9	BL530	2CPX030855R9999	
	UK54...	657 x 297 x 33	727 x 367 x 9	BL540	2CPX030856R9999	
art line Brushed stainless steel	UK52...	407 x 297 x 33	490 x 407 x 39	BL528D	2CPX030918R9999	
	UK53...	532 x 297 x 33	615 x 407 x 39	BL538D	2CPX030919R9999	
addition line Picture frame door aluminium brushed	UK52...	407 x 297 x 27	487 x 378 x 26	BL521D	2CPX030858R9999	
	UK53...	532 x 297 x 27	612 x 378 x 26	BL531D	2CPX030859R9999	
Picture frame door Colour: white, RAL 9016	UK52...	407 x 297 x 27	487 x 374 x 22	BL527D	2CPX030897R9999	
	UK53...	532 x 297 x 27	612 x 374 x 22	BL537D	2CPX030898R9999	
color line Trim frame with door Colour: Anthracite RAL 7016 More RAL colours on request	UK51...	282 x 297 x 33	352 x 367 x 9	BL516C	2CPX031251R9999	
	UK52...	407 x 297 x 33	477 x 367 x 9	BL526C	2CPX031252R9999	
	UK53...	532 x 297 x 33	602 x 367 x 9	BL536C	2CPX031253R9999	
	UK54...	657 x 297 x 33	727 x 367 x 9	BL546C	2CPX031254R9999	
vision line Transparent door	UK51...	282 x 297 x 33	352 x 367 x 9	BL510K	2CPX030835R9999	
	UK52...	407 x 297 x 33	477 x 367 x 9	BL520K	2CPX030836R9999	
	UK53...	532 x 297 x 33	602 x 367 x 9	BL530K	2CPX030837R9999	
	UK54...	657 x 297 x 33	727 x 367 x 9	BL540K	2CPX030838R9999	
media line Trim frame and door with ventilation holes Colour: white, RAL 9016 sheet steel, powder-coated	UZM530MV	532 x 297 x 33	602 x 367 x 9	BL530L	2CPX030990R9999	
	UZM540MV	657 x 297 x 33	727 x 367 x 9	BL540L	2CPX030991R9999	

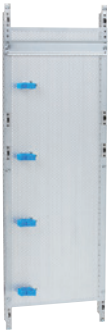
Media panels

For AL and UL compact distribution boards - empty cabinets



Your benefits at a glance

- Clear and central arrangement
- Quick mounting of devices without drilling
- Sufficient space for future communication devices
- Simple power supply to the devices using the distribution board panel
- Tidy cabling using wire holders
- Wire holder included in the scope of delivery
- With mounted DIN rail
- Improved tidiness and security



1MM0A

Article	Pieces	Type	Ord. no.	Price
Media panel with perforated sheet steel mounting plate				
1 panel wide, overall height 00 / 3 GU / 450 mm	1	1MM00A	2CPX030982R9999	
1 panel wide, overall height 0 / 4 GU / 600 mm	1	1MM0A	2CPX030987R9999	
1 panel wide, overall height 1 / 5 GU / 750 mm	1	1MM1A	2CPX030988R9999	
1 panel wide, overall height 2 / 6 GU / 900 mm	1	1MM2A	2CPX030989R9999	

> For accessories, see page 10 and 11

> Empty compact distribution board cabinets and distribution panels, see Main Catalogue 2016



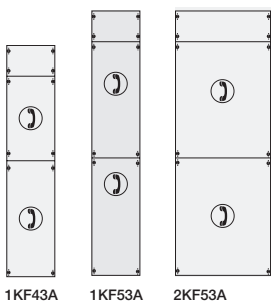
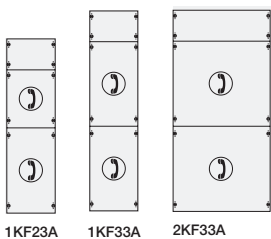
Communication panels

For meter and distribution cabinets



Your benefits at a glance

- Clear and central arrangement
- Quick mounting of devices without drilling
- Mounting plates may be removed individually
- Sufficient space for future communication devices
- Simple power supply to the devices using the meter cabinet
- Tidy cabling using wire holders
- Wire holder included in the scope of delivery
- Best protection thanks to covers
- Improved tidiness and security



Article	Pieces	Type	Ord. no.	Price
Communication panels To assemble devices without drilling max. installation depth of the devices 94 mm, M4 fastening screws and captive nuts, equipotential bonding rail slot covers May only be used if approved by the system operator				
1 panel wide 6 mounting cross members for devices incl. 1 segregation wall, overall height 2 / 6 GU / 900 mm	1	1KF23A	2CPX037184R9999	
1 panel wide 7 mounting cross members for devices incl. 1 segregation wall, overall height 3 / 7 GU / 1050 mm	1	1KF33A	2CPX037185R9999	
2 panel wide 7 mounting cross members for devices incl. 1 segregation wall, overall height 3 / 7 GU / 1050 mm	1	2KF33A	2CPX037188R9999	
1 panel wide 8 mounting cross members for devices incl. 1 segregation wall, overall height 4 / 8 GU / 1200 mm	1	1KF43A	2CPX037186R9999	
1 panel wide 9 mounting cross members for devices incl. 1 segregation wall, overall height 5 / 9 GU / 1350 mm	1	1KF53A	2CPX037187R9999	
2 panel wide 9 mounting cross members for devices incl. 1 segregation wall, overall height 5 / 9 GU / 1350 mm	1	2KF53A	2CPX037189R9999	

> For meter and distribution cabinets, see Main Catalogue 2016

Accessories

For consumer units, compact distribution boards and meter cabinets



ZE225



ZX29



ZE226



ZX28



ZX35



ZX299P10

Article	Pieces	Type	Ord. no.	Price
Dual socket 230 V AC to be mounted to ZX28 support For media enclosures UK... and media enclosures 1MM...	1	ZE225	2CPX061177R9999	
Support for dual socket ZE225 For an assembly to the perforated sheet steel mounting plate of the multimedia enclosures UK... and of the multimedia enclosures 1MM...	1	ZX29	2CPX061178R9999	
Triple socket 230 V AC to be mounted to ZX28 support For communication panels 1KF.3A and 2KF.3A	1	ZE226	2CPX061207R9999	
Support for triple socket ZE225 For an assembly to the EDF-bar of the communication panels 1KF...A and 2KF...A or to the perforated sheet steel mounting plate of the compact distribution boards	1	ZX28	2CPX061205R9999	
PE-rail, insulated For an assembly to the mounting cross member and the DIN rail	1	ZK274	2CPX064840R9999	
Mounting cross member for communication panels 1 panel wide	1	ZX35	2CPX060638R9999	
2 panel wide	1	ZX59	2CPX039245R9999	
Captive nuts M4 M4, for assembling devices to the mounting cross member	10	ZX299P10	2CPX060639R9999	

Accessories

For consumer units, compact distribution boards and meter cabinets



ZE321



ZE316



ZE317



ZE318



ZE319



ZE320



ZE311



ZE310



ED44P10



ED45P10



ED57P10



ZX287P10

Article	Pieces	Type	Ord. no.	Price
Patch panel empty for communication modules, e.g. RJ45 connector, COAX module, etc. For the direct and insulated assembly to the EDF-rail, DIN rail or mounting plate				
1 panel wide for 10 modules (e.g. RJ45 connector)	1	ZE321	2CPX061206R9999	
2 panel wide for 20 modules (e.g. RJ45 connector)	1	ZE322	2CPX061210R9999	
Connectors for patch panels				
COAX module F / F connector	1	ZE316	2CPX039246R9999	
COAX module IEC connector	1	ZE317	2CPX039247R9999	
COAX module IEC plug	1	ZE318	2CPX039248R9999	
OpDAT module LC (Ph-Br)	1	ZE319	2CPX039249R9999	
Blind module	1	ZE320	2CPX039250R9999	
RJ45 connector Plastic	1	ZE311	2CPX038612R9999	
IP patch module RJ45 module with adapter to assemble the DIN rail	1	ZE310	2CPX038625R9999	
Wire holder To be inserted at the mounting cross member of the communication panels or with adapter ED57P10 for an assembly to the perforated sheet steel mounting plate Overall size 28.5 mm	10 50	ED44P10 ED44P50	2CPX062335R9999 2CPX062308R9999	
Overall size 55 mm	10 50	ED45P10 ED45P50	2CPX062336R9999 2CPX062310R9999	
Adapter For assembling ED44P10 wire holders to the perforated sheet steel mounting plate	10	ED57P10	2CPX061179R9999	
Screws M4 x 14 thread rolling for the perforated sheet steel mounting plate	10	ZX287P10	2CPX061180R9999	

Contact us

ABB STRIEBEL & JOHN GmbH & Co. KG

Am Fuchsgraben 2-3
77880 Sasbach, Germany
Telefon: +49 7841 609 0
Telefax: +49 7841 609 400
E-Mail: info.desuj@de.abb.com

www.striebelundjohn.com

We reserve the right to make technical changes or modify the contents of this document without prior notice. With regard to purchase orders, the agreed particulars shall prevail. ABB STRIEBEL & JOHN does not accept any responsibility whatsoever for potential errors or possible lack of information in this document.

We reserve all rights in this document and in the subject matter and illustrations contained therein. Any reproduction, disclosure to third parties or utilization of its contents – in whole or in parts – is forbidden without prior written consent of ABB STRIEBEL & JOHN.

Copyright © 2016 ABB STRIEBEL & JOHN
All rights reserved

K-0140-EB-03/2016-V1 · 2CPC 000 140 L0201