

# 18<sup>TH</sup> ANNUAL NORTHWEST'S BULL SALE

**MONDAY MARCH 16, 2020**

**1:00 pm RITCHIE BROS AUCTIONEERS  
NORTH BATTLEFORD SITE**

**FEATURING 6 BREEDS OF BULLS**



**CHAROLAIS**



**POLLED HEREFORD**



**BLACK ANGUS**



**SIMMENTAL**



**LIMOUSIN**



**RED ANGUS**

**VIDEO  
SALE!**

View the bulls on location prior to the sale and the day before at the open house as they will not be going through the sale ring as this is a video sale. Videos and catalogue can be seen online at

[www.buyagro.com](http://www.buyagro.com)

**With a buyer's number, you are eligible to win one of two \$500.00 credit vouchers towards your purchase of a 2020 bull. Winners will be announced prior to the sale.**



Live Games Tables  
Kihiw Restaurant  
Free Shuttle Service

**335 Slot Machines!**

Entertainment  
Banquet Room  
Players Club



**Gold Eagle Casino** (306) 446-3833  
**Kihiw Restaurant** (306) 446-0507  
**Event Centre** (306) 446-2488  
11902 Railway Ave  
North Battleford, SK  
[www.GoldEagleCasino.ca](http://www.GoldEagleCasino.ca)



# VIDEO SALE!

View the bulls on location prior to the sale and the day before at the open house as they will not be going through the sale ring as this is a video sale. Videos and catalogue can be seen online at

[www.buyagro.com](http://www.buyagro.com)

Stock available for viewing Sunday 1:00 pm-5:00 pm and Monday 9:00 am-Sale Time

## AUCTIONEER

Neil Kramer  
Phone 306-445-5000

## RINGMEN

Kim Kramer  
Brendan Kramer  
Scott Meiklejohn  
Michael Higgs

## SALE REPRESENTATIVE

Mike Franc  
Phone 306-930-8684  
Jack Hochbaum  
Phone 306-843-2054

## BLOCKMAN

Terry Cunningham  
Phone 306-276-2416

SALE CONDUCTED BY

**rb** **RITCHIE BROS.**  
Auctioneers®

Phone 445-5000  
P.O. Box 1807 North Battleford, SK

## SALE SCHEDULE SALE STARTS AT 1:00 PM

- Black Angus • Red Angus
- Polled Hereford • Simmental
- Charolais • Limousin

ALL BULLS  
ARE  
SEMEN  
TESTED

Complimentary Coffee & Donuts  
Supplied by

*Tim Hortons.*

1:00 pm - 5:00 pm  
Sunday Afternoon



Complimentary Beef-On-A-Bun  
Compliments of



North West Terminal

1 Mile East Hwy #14 Box 1090, Unity, SK S0K 4L0  
[www.northwestterminal.com](http://www.northwestterminal.com)

11:00 am - 1:00 pm Sale Day

Complimentary Beef-On-A-Bun  
Compliments of



CUT KNIFE AG FOODS

112 BROAD STREET  
CUT KNIFE, SK  
306-398-2244

UNITY AG FOODS

136 3<sup>rd</sup> AVENUE WEST  
UNITY, SK  
306-228-2828

11:00 am - 1:00 pm Sale Day

## CONSIGNORS

### BLACK ANGUS

#### AJ ANGUS

Adrian & Kim Jungman  
PO Box 338 Duck Lake, SK S0K 1J0  
Phone 306-221-6864

#### HIGH TREE CATTLE

Jack & Terry Hochbaum  
Box 242, Wilkie, SK S0K 4W0  
Phone 306-843-2054 Fax 306-843-2059

### RED ANGUS

#### HIGH TREE CATTLE

Jack & Terry Hochbaum  
Box 242, Wilkie, SK S0K 4W0  
Phone 306-843-2054 Fax 306-843-2059

#### MANN BROS. RED ANGUS

Joel & Jennifer Mann  
Box 327, Wilkie, SK S0K 4W0  
Phone 306-843-2063

### LIMOUSIN

#### LAZY A LIMOUSIN

Brent & Carey Hirschfeld  
Box 279, Cando, SK S0K 0V0  
Phone 306-937-7553

**Each animal becomes the risk of the purchaser as soon as they are sold. All bulls going back to the farms of the consignors until delivery MUST BE INSURED.**

**Insurance available on sale day: GLASLYN AGENCIES 306-342-2133. Arrangements for delivery of bulls MUST BE MADE PRIOR TO SALE TIME.**

**BRING YOUR TRAILER AND SAVE \$100 PER LOT**

### POLLED HEREFORDS

#### R&L HEATHER POLLED HEREFORDS

Ryan & Bob Heather  
Box 312, Biggar, SK S0K 0M0  
Phone 306-948-2714

### CHAROLAIS

#### SWISTUN CHAROLAIS

Donnie Swistun  
RR 1, North Battleford, SK S9A 2X3  
Phone 306-445-9868 Cell 306-481-6680

### SIMMENTALS

#### CROMARTIE CATTLE FARM

Brenda and Dennis Cromartie  
Box 1089, Shellbrook SK S0J 2E0  
Phone 306-961-5651

#### DOUBLE R SIMMENTALS

Ryan Heather  
Box 990, Biggar, SK S0K 0M0  
Phone 306-951-7170



**Glaslyn Agencies**

**342-2133**

TRACIE DAVIES

*Insuring all your tomorrows  
by protecting you today*

[www.glaslynagencies.ca](http://www.glaslynagencies.ca)

Medstead  
342-2157

Fax - 342-4311

Rabbit Lake  
824-2166

**S**iklenka  
Seeds

P.O. Box 225, Glaslyn, SK S0M 0Y0  
(306) 342-4290 (306) 342-4409

**Quality Grass  
and Forage Seed  
at affordable prices**

**Custom Blending**

**Seed purities always available**



# LIMOUSIN

1

## LAZY A FIRE ME UP

CPM4093310 LAZ 7F March 19, 2018

DIAMOND C YOU'RE COOL  
**RICHMOND ARDON SRD 79A**  
 RICHMOND XTRAVAGANT SRD 115X

DIAMOND C WAY COOL  
 DIAMOND C WEDDING CRASHER  
 NORDAL TRENDSETTER  
 JYF NIRVANA

RICHMOND TARZAN SRD 55T  
**ELIAN POLLED XTRA**  
 ELIAN SPANISH COFFEE

RICHMOND PRIDE SRD 201P  
 LAZY S SSK 94L  
 ELIAN POLLED NINJA  
 GKF POLLED LOLITA

**BW 96 lbs WW 700 lbs YW 1025 lbs 96% Purebred. Double Polled.**

This bull will add depth and width to your calves. He is wide backed and big footed; super quiet and easy moving. Last offering of the sire. Semen tested, express 5 vaccine and footrot vaccine for sale day.

GES: -1 CE: 7 BW: 2.8 WW: 65 YW: 96 Milk: 24 SC: .7 DOC: 11



Consigned by: **Lazy A Limousin**

2

## LAZY A FREDERICK

CPM4093299 LAZ 22F March 24, 2018

DIAMOND C YOU'RE COOL  
**RICHMOND ARDON SRD 79A**  
 RICHMOND XTRAVAGANT SRD 115X

DIAMOND C WAY COOL  
 DIAMOND C WEDDING CRASHER  
 NORDAL TRENDSETTER  
 JYF NIRVANA

ELIAN POLLED XTRA SPECIAL  
**LAZY A ZUMBA**  
 ELIAN POLLED XCELLSIOR

ELIAN POLLED NINJA  
 ELIAN POLLED RESEMBLANCE  
 RICHMOND TARZAN SRD 55T  
 ELIAN POLLED RADIANCE

**BW 104 lbs WW 700 lbs YW 1030 lbs 96% Purebred. Double Polled.**

This bull is a favourite of the bull pen! Heavy muscled and big footed with length of body and clean fronted. He will add pounds to your calves and money to your wallet. Last offering of this sire. Semen tested, express 5 vaccine and footrot vaccine for sale day.

GES: -1 CE: 6 BW: 3.7 WW: 67 YW: 98 Milk: 21 SC: .4 DOC: 12



Consigned by: **Lazy A Limousin**

3

## LAZY A FLYNN

CPM4093326 BEH 26F March 22, 2018

DIAMOND C YOU'RE COOL  
**RICHMOND ARDON SRD 79A**  
 RICHMOND XTRAVAGANT SRD 115X

DIAMOND C WAY COOL  
 DIAMOND C WEDDING CRASHER  
 NORDAL TRENDSETTER  
 JYF NIRVANA

TOP MEADOW TOTAL PACKAGE 10T  
**HOLLEES XPRT WITNESS**  
 LEES HOLLY

CARROUSELS PEAK POWER  
 TOP MEADOW 543P  
 DON JUAN  
 LEE'S CLEOPATRA

**BW 96 lbs WW 685 lbs YW 935 lbs 96% Purebred. Double Polled.**

This bull is more traditional in his colouring. He is smooth fronted and very easy moving with a thick hair coat. He is very easy to work with. His dam has a beautiful udder and feet. Last offering of this sire. Semen tested, express 5 vaccine and footrot vaccine for sale day.

GES: -1 CE: 7 BW: 2.4 WW: 61 YW: 90 Milk: 22 SC: .6 DOC: 13



One of our daughter's first bulls to be offered at the NW Bull Sale.

Consigned by: **Lazy A Limousin**

4

## LAZY A FLYING FANCY

CPM4093325 BEH 58F March 26, 2018

WULFS XCELLSIOR X252X  
**EDW DIPLOMAT**  
 EDW BOLD AND BEAUTIFUL

WULFS SIRLOIN 3172S  
 WULFS MISSIVE 2258M  
 KEN-DOC LOVER BOY  
 EDW SMITTEN KITTEN

HOLLEES YUCATAN  
**LAZY A CATCH MY FANCY**  
 HOLLEES XPRT WITNESS

RPY PAYNES DYNAMO 16U  
 EXE LUCY  
 TOP MEADOW TOTAL PACKAGE  
 LEES HOLLY

**BW 84 lbs WW 697 lbs YW 1005 lbs 93% Purebred. Double Polled.**

This dark cherry bull has a thick hair coat and muscled hind quarter. He would be a potential heifer bull. His dam is a proven bull producer and has a beautiful tight udder. This easy moving bull is the last offering of his sire. Semen tested, express 5 vaccine and footrot vaccine for sale day.

GES: -4 CE: 10 BW: .8 WW: 60 YW: 90 Milk: 21 SC: .5 DOC: 3



One of our daughter's first bulls to be offered at the NW Bull Sale.

Consigned by: **Lazy A Limousin**

# BLACK ANGUS

5

## AJA REIGN 914G

2102229 AJA 914G January 20, 2019

COLEMAN CHARLO 0256  
**S A V REIGN 6845**  
 S A V BLACKCAP MAY 4136

O C C PAXTON 730P  
 BOHI ABIGALE 6014  
 S A V 8180 TRAVELER 004  
 S A V MAY 2397

S A V REGISTRY 2831  
**AJA RUBY 714E**  
 DEERE ROSE RUBY 14C

RITO 707 OF IDEAL 3407  
 S A V MADAME PRIDE 0075  
 DEERE ROSE NEW LEVEL 14A  
 DEERE ROSE RUBY 19A

**BW 64 lbs**

We are very happy with how this mating turned out. 914G is a SAV Reign son out of a Registry daughter that goes back to our powerful 14C cow. All our Registry females are top producing, consistent cows putting hair thickness and performance in their progeny. 914G has that desired length of spine with hip. With only a 64 Lbs birthweight, don't fear this early stand out as he is sure to not disappoint!

**BW: -1.0 WW: 54 YW: 91 Milk: 21 TM: 48**

**Purebred.**



Consigned by: **AJ Angus**

6

## AJA REIGN 924G

2116924 AJA 924G February 4, 2019

COLEMAN CHARLO 0256  
**S A V REIGN 6845**  
 S A V BLACKCAP MAY 4136

O C C PAXTON 730P  
 BOHI ABIGALE 6014  
 S A V 8180 TRAVELER 004  
 S A V MAY 2397

MUIRHEAD'S MR 108T  
**ROSEBUD OF DEERE ROSE RTH 16Z**  
 ROSEBUD OF DEERE ROSE 22R

WOODHILL FORESIGHT  
 BWB BEATRICE 74P  
 LINWOOD VRD 9N  
 ROSEBUD OF DEERE ROSE 1M

**BW 90 lbs**

Here is a very complete individual. 924 connects a lot of dots to conclude to a very complete package. His mother goes back to Papa Forte and with his sire S A V Reign, this bull is easy doing, thick, well haired with tremendous barrel. These S A V Reign bulls sure do push that scale down. They are so wide based and heavy quartered they are truly a sight for sore eyes!

**BW: 2.9 WW: 51 YW: 88 Milk: 22 TM: 48**

**Purebred.**



Consigned by: **AJ Angus**



**Whatever it takes to GET THE JOB DONE.**

**NORTH BATTLEFORD**  
 Hwy 16 E | 888.446.8128



**AGRICULTURAL | CONSTRUCTION | TRUCKS & TRAILERS**  
[redheadequipment.ca](http://redheadequipment.ca)





**BATTLEFORDS**  
 Bait and Tackle



---

**Allen Mitchell**  
 RR #1, Battleford, SK S0M 0E0  
 Phone: 306-937-2275  
 Fax: 306-937-7577

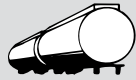

---

**"YOUR ARCHERY SPECIALISTS"**

**Jaeger Transport**  
 (1988) Ltd.

GRAIN • FERTILIZER • PETROLEUM  
 ALBERTA • SASKATCHEWAN • MANITOBA

400 - 20th Street  
 P.O. Box 1294  
 BATTLEFORD, SK S0M 0E0

**(306) 937-2661**



# BLACK ANGUS

## 7 HIGH TREE FRONT LINE 5F

2032288 JRH 5F February 19, 2018

MYTTY IN FOCUS  
SUMMITCREST FOCUS 2U66  
SUMMITCREST ELBA 1M17

JINDRA DOUBLE VISION  
HIGH TREE ATALANTA 179D  
HIGH TREE ATALANTA 120X

S A F FOCUS OF E R  
MYTTY COUNTESS 906  
VERMILION DATELINE 7078  
SUMMITCREST ELBA 1F43

CONNEALY REFLECTION  
HOFF RACHEL 8312 405  
HIGH TREE MAX 30U  
HIGH TREE ATALANTA 70T

BW 78 lbs

Adj 205 Day Wt: 697 lbs

JRH 5F is a moderate frame size and from one of our most productive cows 120X.

BW: 1.1 WW: 49 YW: 86 Milk: 25 TM: 50

Purebred.



Consigned by: **High Tree Cattle**

## 8 HIGH TREE DOUBLE VISION 290G

2092533 JRH 290G February 9, 2019

CONNEALY REFLECTION  
JINDRA DOUBLE VISION  
HOFF RACHEL 8312 405

TC ABERDEEN 759  
HIGH TREE ATALANTA 251C  
HIGH TREE ATALAMA 329A

BON VIEW NEW DESIGN 878  
HAPPY GRILL OF CONANGA 6260  
HOFF LIMITED EDITION SC 594  
HOFF MISS EXPO S C 4223

C R A BEXTOR 872 5205 608  
TC BLACKBIRD 4034  
THOMAS POWDER RIVER 9053  
HIGH TREE ATALANTA 29X

BW 92 lbs

Adj 205 Day Wt: 801 lbs

JRH 290G is a big thick tank of a bull with lots of hair. He should put lots of beef in his calves.

BW: 2.6 WW: 67 YW: 122 Milk: 26 TM: 60

Purebred.



Consigned by: **High Tree Cattle**

## 9 HIGH TREE STUNNER 223G

2092539 JRH 223G February 17, 2019

LD CAPITALIST 316  
MUSGRAVE 316 STUNNER  
MCATL BLACKBIRD 831-1378

TC STOUT 407  
HIGH TREE SUSAN 123Y  
HIGH TREE SUSAN 79T

CONNEALY CAPITALIST 028  
LD DIXIE ERICA 2053  
MCATL PURE PRODUCT 903-55  
MCATL BLACKBIRD 1378-573

TC FREEDOM 104  
TC PRIDE 2053  
EARLY SUNSET 1024 BANDO 103R  
TAF V8 SUSAN 147P

BW 74 lbs

Adj 205 Day Wt: 721 lbs (Twin)

JRH 223G is a thick moderate frame size Stunner son. His dam is good uddered and always has a top calf.

BW: 1.1 WW: 62 YW: 107 Milk: 31 TM: 62

Purebred.



Consigned by: **High Tree Cattle**



# BRIDGES

CHEVROLET BUICK GMC

[www.bridgesgm.com](http://www.bridgesgm.com)

# BLACK ANGUS

10

## HIGH TREE LITTLE WILLIE 6G

2092540 JRH 6G February 18, 2019

BALDRIDGE WAYLON W34  
BALDRIDGE WILLIE Y34  
BALDRIDGE DUCHESS T69

GAR-EGL PROTEGE  
BALDRIDGE BLACKCAP T163  
BALDRIDGE NAVIGATOR N5  
BALDRIDGE DUCHESS R51

THOMAS POWDER RIVER 9053  
HIGH TREE POKEY 220D  
HI-TREE POKEY 140Y

S A V FINAL ANSWER 0035  
THOMAS CAROL 7595  
BON VIEW NEW DESIGN 878  
HIGH TREE POKEY 25U

BW 90 lbs  
Adj 205 Day Wt: 826 lbs

JRH 6G is deep deep sided with lots of hair and loaded with AI genetics.

BW: 2.4 WW: 70 YW: 119 Milk: 24 TM: 59

Purebred.



Consigned by: **High Tree Cattle**

11

## HIGH TREE EPIC 233G

2126452 JRH 233G February 18, 2019

VARILEK PRODUCT 2010 04  
3F EPIC 4631  
ZEBO QUEEN 1072

CONNELY FINAL PRODUCT  
VARILEK PEARL 0006 014  
EF COMPLEMENT 8088  
EXG BLACKCAP 6247 PPC

SKINNER WINDY 25X  
HIGH TREE SUSAN 123Z  
HIGH TREE SUSAN 79T

H A R B WINDY 702 J H  
SKINNER ANNIE K 3U  
EARLY SUNSET 1024 BANDO 103R  
TAF V8 SUSAN 147P

BW 85 lbs  
Adj 205 Day Wt: 735 lbs

JRH 233G is a tested Epic son out of a Susan dam which is known for calving ease and growth.

BW: 0.2 WW: 59 YW: 105 Milk: 27 TM: 57

Purebred.



Consigned by: **High Tree Cattle**

12

## HIGH TREE BREAK THROUGH 244G

2092545 JRH 244G February 26, 2019

BALDRIDGE WILLIE Y34  
BALDRIDGE BREAKTHROUGH A091  
BALDRIDGE EVER ENTENSE X331

BALDRIDGE WAYLON W34  
BALDRIDGE DUCHESS T69  
STYLES UPGRADE J59  
BALDRIDGE EVERELDAENTENSEP805

HA PROGRAM 5652  
HIGH TREE BLACKBIRD 184A  
HIGH TREE BLACKBIRDS 64X

HA FUTURE DIRECTION 3540  
HA BLACKCAP LADY 2782  
HOFF FIRST EDITION 058 242  
JRH HIGH BLACKBIRD 44P

BW 95 lbs  
Adj 205 Day Wt: 794 lbs

JRH 244G is long long spined with lots of growth. Also lots of AI genetics Waylon Program and First Edition.

BW: 1.9 WW: 66 YW: 116 Milk: 27 TM: 60

Purebred.



Consigned by: **High Tree Cattle**

# OREN'S TRUCKING

• Auger Truck • Custom Hauling

**OREN ROBINSON**

**Box 370**

Landis, SK S0K 2K0

Phone (306) **658-4755**

Cell (306) **843-7020**

Fax (306) **658-2008**

Box 157  
North Battleford, SK S9A 2Y1  
pfe2004@sasktel.net

**CALL US TODAY!**  
**306-445-2427**

## Parkland

*Farm Equipment (2004) Ltd.*



*Challenger*

**Kubota**

**MORRIS**

www.parklandfarmequipment2004.ca





Get financing  
that's flexible  
1-800-387-3232 | fcc.ca

DREAM. GROW. THRIVE.

# Tired of your truck and trailer getting destroyed?


When you book in your truck and/or trailer to get that much needed protection from rocks and other elements you will receive a 10% discount.\*

USE COUPON CODE: **BULLSALE10**  
Use coupon code in-store or by phone (306)445-1445.  
Expires: Sept. 30 2020



Located at  
592 35th St. W.,  
Battleford, SK

**Lil' Miss Winter**



**RN DOORS**  
INSTALLATION SALES & SERVICE  
RESIDENTIAL & COMMERCIAL

Box 115  
Cando, SK S0K 0V0

Randy Anthofer  
Nancy Stewart

Home: 306.937.2890  
Cell: 306.843.7021

# RED ANGUS

## 13 RED HI-TREE DETOUR 3F

2075868 JRH 3F February 12, 2018

RED RMJ REDMAN 1T  
**RED LAZY MC CC DETOUR 2W**  
 RED LAZY MC BESS 12S

RED 5L NORSEMAN KING 2291  
 CROWFOOT KURUBA 4033P  
 RED LAZY MC SMASH 41N  
 RED LAZY MC BESS 73N

RED SILVEIRAS MISSION NEXUS  
**RED HI-TREE LANA 194D**  
 RED HI-TREE LANA 94X

RED LJC MISSION STATEMENT P27  
 RED SILVEIRAS DAORV 8399  
 RED ROY ROGERS 5604  
 RED HI-TREE GRAND LANA 11R

**BW 82 lbs**

**Adj 205 Day Wt: 661 lbs**

JRH 3F is a moderate framed easy keeping Detour son with highly maternal Mission Nexus.

**BW: 0.3 WW: 33 YW: 60 Milk: 26 TM: 43**

**Purebred.**



Consigned by: **High Tree Cattle**

## 14 RED HI-TREE FUSION 268F

2032293 JRH 268F February 22, 2018

RED ANDRAS IN FOCUS B175  
**RED ANDRAS FUSION R236**  
 RED ANDRAS BELLE B167

MYTTY IN FOCUS  
 RED DI ESTONIA 316  
 RED ANDRAS THUNDER B105  
 RED ANDRAS BELLE 416

RED BECKTON HALFMANNHUSTLER  
**RED HI-TREE CHETA 68A**  
 RED HI-TREE CHETA 8P

RED BECKTON HUSTLER CN J102  
 RED BECKTON VERNICE F513 CL  
 RED LITTLE DE BARNEY 426L  
 RED LITTLE DE CHETA 987F

**BW 95 lbs**

**Adj 205 Day Wt: 703 lbs**

JRH 268F is big framed with lots of muscle and dark red hair. His dam is from our Cheta cow family. Sire Halfmannhustler.

**BW: 1.4 WW: 45 YW: 83 Milk: 20 TM: 43**

**Purebred.**



Consigned by: **High Tree Cattle**

## 15 RED HI-TREE FULLY LOADED 234G

2092529 JRH 234G February 6, 2019

RED HEARTLAND KNIGHT CHARM 11L  
**RED TER-RON FULLY LOADED 540R**  
 RED TER-RON GOLDIE 240L

RED YY RED KNIGHT 640F  
 RED CARRUTHERS TRIBECCA 7F  
 RED LAZY MC DIVIDE 8J  
 RED TER-RON GOLDIE 240J

RED SIX MILE SAKIC 832S  
**RED HI-TREE BLACKBIRD 84Z**  
 RED HI-TREE BLACKBIRD 22R

RED SIX MILE AVIATOR 217P  
 RED SIX MILE SIERA 257P  
 RED FRITZ HI HO 849  
 RED HI-TREE JILL BIRD

**BW 88 lbs**

**Adj 205 Day Wt: 694 lbs**

JRH 234G is a real hunk of a bull. His dam coming from Sakic and Hi Ho so he will be easy keeping.

**BW: 3.9 WW: 40 YW: 64 Milk: 13 TM: 33**

**Purebred.**



Consigned by: **High Tree Cattle**

# YELLOWHEAD MODULAR HOME SALES

Canadian Built by Moduline

**306-496-7538 OR 780-872-2728**

[affordablehomesales@sasktel.net](mailto:affordablehomesales@sasktel.net)

[www.yellowheadmodularhomesales.ca](http://www.yellowheadmodularhomesales.ca)

**LIMITED TIME OFFER!**

**HUGE! Option PKG \$10,000 Value**  
 Available for custom ordered homes.

**No Bull Discount Pricing**

**960 SQ Feet - \$99,900**

**1216 SQ Feet - \$109,900**

## NEW SALES LOT IN LLOYDMINSTER



# RED ANGUS

## 16 RED HI-TREE MONOPOLY 17G

2092528 JRH 17G February 6, 2019

TER-RON PARK PLACE 18Y  
**RED TER-RON MONOPOLY 84A**  
 RED TER-RON ALYSA 33R

RED VGW RAMBLER 1000  
**RED HI-TREE LORI 247E**  
 HI-TREE LORI 357A

HF TIGER 5T  
 RED TER-RON GOLDIE 240L  
 RED HEARTLAND KNIGHT CHARM 11L  
 RED TER-RON ALYSA 33M

RED BJR RAMBLER 5162  
 RED VGW UMPIRE YUMA 9266  
 COLE CREEK CEDAR RIDGE 1V  
 RED HI-TREE LORI 157Y

**BW 78 lbs**

**Adj 205 Day Wt: 687 lbs**

JRH 17G's dam is from our Lori cow family and Rambler 1000 so you know there will be calving ease and growth.

**BW: -0.1 WW: 37 YW: 67 Milk: 23 TM: 42**

**Purebred.**



Consigned by: **High Tree Cattle**

## 17 RED HI-TREE TREND SETTER 194G

2092544 JRH 194G February 25, 2019

RED BRYLOR NEW TREND 22D  
**RED RKY MTN TRENDSETTER 28J**  
 RED RKY MTN COPPER LADY 8D

RED ROY ROGERS 5604  
**RED HI-TREE LANA 94X**  
 RED HI-TREE GRAND LANA 11R

SSS BLACK TREND 13B  
 RED MEADOW CK MISS SEAMAN 31A  
 RED BHC STRYKER  
 RED RUTHE COPPER LADY 128A

RED NORTHLINE ROB ROY 122K  
 RED PIE PATTI ANNE 9221  
 RED LCHMN GRND CANYON 1244G  
 RED LITTLE DE LANA 937F

**BW 92 lbs**

**Adj 205 Day Wt: 692 lbs**

JRH 194G is bigger framed with lots of growth potential. He has maternal AI genetics Roy Rogers, Grand Canyon and New Trend and our best older cow family.

**BW: 4.0 WW: 31 YW: 62 Milk: 27 TM: 43**

**Purebred.**



Consigned by: **High Tree Cattle**

## 18 RED HI-TREE CAPACITY 247G

2092557 JRH 247G March 12, 2019

RED BADLANDS CAPACITY 37W  
**RED MANN BROS CAPACITY 27D**  
 RED MANN BROS MISS MINY 17U

COLE CREEK CEDAR RIDGE 1V  
**HI-TREE LORI 357A**  
 RED HI-TREE LORI 157Y

RED UBAR HIGH CAPACITY 224  
 RED BADLANDS RED CEDAR 311  
 RED LCC MAJOR LEAGUE A502M  
 RED MANN BROS MISS MINY 17M

COLE CREEK BLACK CEDAR 46P  
 COLE CREEK CLOVANADA 49S  
 RED EKW EARL OF RENFREW 8W  
 RED HI-TREE LORI 57U

**BW 90 lbs**

**Adj 205 Day Wt: 745 lbs**

JRH 247G is dark dark red and extra long-spined. His is from a Cedar Ridge dam so you know he has growth potential.

**BW: 2.7 WW: 47 YW: 79 Milk: 26 TM: 50**

**Purebred.**



Consigned by: **High Tree Cattle**



## Ramsay's Custom Hauling

- 53' Ground Load Cattle Semi
- 17 Bale Self-Load/Unload Bale Trucks
- 2 - 20' Gooseneck Stock Trailers
- High-Boy Bale Trailer
- Hay & Straw Sales

**Steve Ramsay**

**Brian Ramsay**

**Ph: (306) 386-2213 or 386-2490**

**Cell: (306) 441-9327**

**Cochin, Saskatchewan**

# RED ANGUS

## 19 RED MANN BROS CUSTOM MADE 37G

2096090 MABR 37G January 25, 2019

RED U-2 RECKONING 149A  
**RED SIX MILE CUSTOM MADE 505C**  
RED SIX MILE LASSIE 207Z

RED U-2 RECON 192Y  
RED U-2 ANEXA 271Y  
RED BASIN EXT 45T5  
RED SIX MILE LASSIE 377P

RED SSS CACHE 780L  
**RED MANN BROS MISS MAY 37T**  
RED MANN BROS MISS MAY 31N

RED SSS BOOMER 803B  
RED SSS DYLAN'S VALENTINE 103C  
RED TJA KING ROB 5K  
RED MANN'S MISS MAY MAJ 31E

BW 87 lbs

Purebred.

BW: 1.4 WW: 28 YW: 44 Milk: 27 TM: 41



Consigned by: **Mann Bros. Red Angus**

## 20 RED MANN BROS CUSTOM MADE 95G

2096092 MABR 95G January 27, 2019

RED U-2 RECKONING 149A  
**RED SIX MILE CUSTOM MADE 505C**  
RED SIX MILE LASSIE 207Z

RED U-2 RECON 192Y  
RED U-2 ANEXA 271Y  
RED BASIN EXT 45T5  
RED SIX MILE LASSIE 377P

RED GOAD SIN CITY 102'11  
**RED MANN BROS NANCY 75B**  
RED MANN BROS NANCY 75X

RED TER-RON WALKABOUT 161W  
RED KORAN GAMMA 207R 225  
RED BADLANDS MR BEEF 805  
RED MANN BROS NANCY 75N

BW 85 lbs

Purebred.

BW: 1.4 WW: 30 YW: 51 Milk: 30 TM: 45



Consigned by: **Mann Bros. Red Angus**

## 21 RED MANN BROS GRAND SLAM 78G

2096098 MABR 78G February 1, 2019

RED VGW GAME PLAN 816  
**RED SIX MILE GRAND SLAM 130Z**  
RED SIX MILE REBECCA 216X

RED VGW GAME PLAN 508  
RED VGW TW DOLL 0270  
RED SSS BUCC 30U  
RED WILBAR REBECCA 234M

RED GOAD SIN CITY 102'11  
**RED MANN BROS MISS RUTH 65B**  
RED MANN BROS MISS RUTH 35Z

RED TER-RON WALKABOUT 161W  
RED KORAN GAMMA 207R 225  
RED PASQUIA ICON 34T  
RED MANN BROS MISS RUTH 35S

BW 85 lbs

Purebred.

BW: 1.1 WW: 31 YW: 54 Milk: 24 TM: 40



Consigned by: **Mann Bros. Red Angus**

## 22 RED MANN BROS SHINE 67G

2096099 MABR 67G February 2, 2019

RED XO CROWFOOT SHINE 235Z  
**RED HOWE SHINE 12B**  
RED HOWE MISS STRETCH 76W

RED CROWFOOT MOONSHINE 8081U  
RED XO CROWFOOT REV ROSE 936W  
RED BAR-E-L RIBEYE 103R  
RED HOWE STRETCH 46P

RED TROTTERS STRONGHOLD 156  
**RED MANN BROS COLD SPARK 68C**  
RED MANN BROS COLD SPARK 68W

RED LJT CITADEL 812  
RED LJT PEARL 579  
RED PASQUIA ICON 34T  
RED MANN BROS COLD SPARK 6S

BW 80 lbs

Purebred.

BW: 0.5 WW: 44 YW: 72 Milk: 17 TM: 39



Consigned by: **Mann Bros. Red Angus**



# RED ANGUS

## 23 RED MANN BROS SHINE 76G

2096101 MABR 76G February 3, 2019

RED XO CROWFOOT SHINE 235Z  
**RED HOWE SHINE 12B**  
RED HOWE MISS STRETCH 76W

RED BROWN JYJ REDEMPTION Y1334  
**RED MANN BROS MISS MINY 7C**  
RED MANN BROS MISS MINY 7Z

RED CROWFOOT MOONSHINE 8081U  
RED XO CROWFOOT REV ROSE 936W  
RED BAR-E-L RIBEYE 103R  
RED HOWE STRETCH 46P

RED BECKTON NEBULA P P707  
RED JYJ MS JOLENE W16  
RED SSS CACHE 780L  
RED MANN BROS MISS MINY 17U

BW 82 lbs

BW: -0.4 WW: 43 YW: 72 Milk: 17 TM: 39

Purebred.



Consigned by: **Mann Bros. Red Angus**

## 24 RED MANN BROS SHINE 28G

2096109 MABR 28G February 16, 2019

RED XO CROWFOOT SHINE 235Z  
**RED HOWE SHINE 12B**  
RED HOWE MISS STRETCH 76W

RED BADLANDS MR BEEF 805  
**RED MANN BROS MISS MINY 18B**  
RED MANN BROS MISS MINY 18T

RED CROWFOOT MOONSHINE 8081U  
RED XO CROWFOOT REV ROSE 936W  
RED BAR-E-L RIBEYE 103R  
RED HOWE STRETCH 46P

RED HLH BUSTER 406 603  
RED BADLANDS KEEPSAKE 632  
RED SMW DIVIDE 82N  
RED MANN BROS MISS MINY 18J

BW 76 lbs

BW: -1.6 WW: 37 YW: 63 Milk: 17 TM: 36

Purebred.



Consigned by: **Mann Bros. Red Angus**

## 25 RED MANN BROS SHINE 38G

2096111 MABR 38G February 25, 2019

RED XO CROWFOOT SHINE 235Z  
**RED HOWE SHINE 12B**  
RED HOWE MISS STRETCH 76W

RED NORTHLINE BREAKER 28S  
**RED MANN BROS MISS MINY 38A**  
RED MANN BROS MISS MINY 38N

RED CROWFOOT MOONSHINE 8081U  
RED XO CROWFOOT REV ROSE 936W  
RED BAR-E-L RIBEYE 103R  
RED HOWE STRETCH 46P

RED PIE ATLANTIC 2204  
RED MAYBRIDGE HP 28E  
RED BL POWER JAB 8J  
RED MANN'S MISS MINY MAJ 18A

BW 84 lbs

BW: 0.3 WW: 33 YW: 50 Milk: 17 TM: 34

Purebred.



Consigned by: **Mann Bros. Red Angus**

## 26 RED MANN BROS SHINE 26G

2096115 MABR 26G March 2, 2019

RED XO CROWFOOT SHINE 235Z  
**RED HOWE SHINE 12B**  
RED HOWE MISS STRETCH 76W

RED PASQUIA ICON 34T  
**RED MANN BROS SHAWNEE 26Z**  
RED MANN BROS SHAWNEE 76S

RED CROWFOOT MOONSHINE 8081U  
RED XO CROWFOOT REV ROSE 936W  
RED BAR-E-L RIBEYE 103R  
RED HOWE STRETCH 46P

RED LETTER ICON 1R  
RED PASQUIA FAYET 22L  
RED SMW DIVIDE 82N  
RED R & M 131G SHAWNEE 77K

BW 77 lbs

BW: -0.3 WW: 34 YW: 56 Milk: 15 TM: 32

Purebred.



Consigned by: **Mann Bros. Red Angus**



# WEST CENTRAL PELLETING LTD.

TOTAL HERD PERFORMANCE

*"Your supplier of quality beef pellets"*

*Use pellets to extend your pasture and stockpile in the summer for great prices*

Wilkie, SK  
1-866-422-2242

← For Product Information and Sales Please call →

Wolseley, SK  
1-866-698-6401

## DUPEROW Co-OP

**Fuel · Agro ·  
Hardware  
General Store ·  
Duperow  
Cardlock · Biggar  
306-948-2706**



**Petroleum and Oil · Seed & Chemical  
Bins and Augers  
Hi Hog · Two W  
Cattle Handling Equipment  
Posts & Rough Lumber  
Barbwire & Fencing  
General Hardware  
Farm Hardware  
Feed & Salt  
Groceries  
Tires  
&  
Serving the Community  
Since 1944**

# TINGLEY'S HARVESTCENTER

Lloydminster · Vegreville · North Battleford

Call us @

306-445-8010

[www.tingleyshc.com](http://www.tingleyshc.com)

*From tillage to seeding through hay season & harvest we've got you covered*

**CLAAS**

**TINGLEY'S JCB**

**HORSCH**

**SEED MASTER**

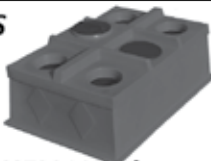
**Elmer's  
MANUFACTURING**

**RICHIGER**

**MCCORMICK**

## SOLAR PUMPS

Floating pumps  
Submersible pumps



**CAP Solar & KELLN Solar**



North Battleford 4120 - 5th Ave. East  
9802 Thatcher Ave. 5th Floor  
P.O. Box 1418 8th #2 Site 201 Comp 9  
S1A 1S1 S1W 1S9  
1(306)937-7741 1(306)704-6639  
1(800)263-7741 1(800)263-6639

**Anderson Pump House Ltd.**  
[www.andersonpumphouse.com](http://www.andersonpumphouse.com)

*Call Anderson Pump House Ltd. Today!*

- Pumping Systems
- Water Storage Tanks
- Valves and Fittings
- Pasture Water Lines
- Pressure Tanks
- Solar Pumping Systems
- Ritchie Water Bowls
- System Design Work & Quotations
- Constant Pressure Pumping Systems
- Pressure Tanks

## Ritchie Fresh Water For Life™





# POLLED HEREFORDS

## 27 R&L 94B WEST 18F C03052528 RLH 18F February 7, 2018

VCR 993W ULTIMATE 236Z  
**JDH 4X ULTIMATE 236Z 94B**  
 JDH AH VIOLETS RECRUIT 4X ET

ZKMH 14R VEGAS 10U  
**R&L 10U EMMA 18Y**  
 R&L 90N EMMA 89U

KJ 426T VINCENT 993W  
 VCR 310N MISS DESIRE 609S  
 KJ 2403 RECRUIT 966R  
 CRR D03 VIOLET 349

ANL3N RIBEYE 14R  
 ZKMH 9K PENNY 6M  
 GHC PREMIER ET 90N  
 R&L 9F EMMA 15K

**BW 95 lbs** **Purebred. Polled.**

R&L 94B West 18F is out of an excellent Ribeye Cow and the Ultimate Bull. 18F is a smooth, correct bull with a 95lb birth weight.



Consigned by: **R&L Heather Polled Herefords**

## 28 R&L 52DE LOCK 95F C03052532 RLH 95F March 30, 2018

WLB LEGO 83T 90X  
**STANDARD-HILL BRICK 52D**  
 SHPH 63N FANCY 3T

GHC PREMIER ET 90N  
**R&L 90N MIST 31T**  
 R&L 31D MIST 15H

WLB ELI 10H 83T  
 WLB 50S GLORIA 35U  
 SHPH 68L ARISTOCRAT 63N  
 SHPH 940G FANFARE 138L

WTK 75A CONTINENTAL 66F  
 WALPOLE PHILIS 13F  
 HHPH P183 OLYMPUS 31D  
 R&L 1A MIST 40F

**BW 90 lbs** **Purebred. Polled.**

R&L 52DE Lock 95F is out of our Lego sire and a top producing Continental cow. 95F has a 90lb birth weight. He is a good walking, athletic bull.



Consigned by: **R&L Heather Polled Herefords**

## 29 R&L 52D TAYLOR 157F C03052520 RLH 157F April 10, 2018

WLB LEGO 83T 90X  
**STANDARD-HILL BRICK 52D**  
 SHPH 63N FANCY 3T

PCL TAYLOR MADE 36N 24T  
**R&L 24T WENDY 53W**  
 R&L 73F NICKIE 82M

WLB ELI 10H 83T  
 WLB 50S GLORIA 35U  
 SHPH 68L ARISTOCRAT 63N  
 SHPH 940G FANFARE 138L

HF 4L BEYOND 36N  
 BBSF 3K JANELLE 46M  
 GHC RUSH WEST 73F  
 R&L 70A NICKIE 6F

**BW 89 lbs** **Purebred. Polled.**

R&L 52D Taylor 157F is another Lego son from a Beyond cow. 157F has an 89lb birth weight. He is a smooth correct bull with extra length.



Consigned by: **R&L Heather Polled Herefords**

## 30 R&L 53A BEYOND 158F C03052535 RLH 158F April 10, 2018

FCC 3T RANSOM 7W  
**GHC PROFILE 53A**  
 GHC MISS BLANCHE ET 37S

GHC WEST END 126X  
**R&L 126X LILLY 41B**  
 R&L 24T WITTY 26W

FCC 7M PRIDE 3T  
 FCC 102M APRIL 6T  
 GHC CHUNK 113L  
 KLONDIKE BEAUTY 789C

WR G2 VICTOR R59 0706  
 DURALTA 60G CUTLER 85N  
 PCL TAYLOR MADE 36N 24T  
 R&L 73F LILLY 45L

**BW 89 lbs** **Purebred. Polled.**

R&L 53A Beyond 158F is a good Profile son out of a Victor cow. 158F is a deep well-muscled bull with extra pigment and an 89lb birth weight. He should work well in any herd.



Consigned by: **R&L Heather Polled Herefords**

# DUTTON FARMS PARTNERSHIP

## WHEAT

Carberry, Stettler, AAC Elie, AAC Brandon

## BARLEY

CDC Copeland, CDC Austenson

## FORAGE PEAS

Green and Yellow Pea Seed  
Call for Varieties

## CONTACT:

**DUTTON FARMS PARTNERSHIP**  
Vicki: 306.441.6699

***Best of Luck to  
the Bull Sale!***

**WITH A BUYER'S NUMBER,  
YOU ARE ELIGIBLE TO WIN  
ONE OF TWO \$500.00 CREDIT  
VOUCHERS TOWARDS YOUR  
PURCHASE OF A 2020 BULL.  
WINNERS WILL BE ANNOUNCED  
PRIOR TO THE SALE.**

## TRIPLE G MOBILE GRAIN CLEANING

of all grains... at very GOOD rates  
[www.triplegseed.com](http://www.triplegseed.com)



Greg Gutting 843-7444  
Kevin Kropf 843-7683

Box 295  
Wilkie, SK S0K 4W0

Both cows and calves require minerals in their diet year round.  
Feeding CO-OP® Cattle Range Mineral offers important benefits to your operation.



## Discovery Co-op Agro Centre

Phone 306-446-7288

*Calving and Animal Health, Feed, Vitalix & Hi-Hog*

# Arnold's

## SAND & GRAVEL LTD.

### CORRAL CLEANING & SAFETY INSPECTION STATION

ARNOLD POOLE

STEVEN DUNLOP

Cell: (306) 441-1693

Cell: (306) 441-1628

Box 304 • Edam, SK S0M 0V0

Bus: (306) 397-5555 • Fax: (306) 397-5556



# SIMMENTALS

## 31 CROMARTIE 2W PRIME 9G

1298854 CRO 9G January 20, 2019

WS BEEF KING W107  
**WS PRIME BEEF Z8**  
 HSF MISS SKY 87U

WS BEEF MAKER R13  
 WS MISS DREAMBOAT T17  
 ER BIG SKY 545B  
 HSF FORTUNATAS QUO 59S

TNT GUNNER N208  
**WANNABE TWIZZLERS GAL 2W**  
 WANNABE TWIZZLER 3T

RC STINGER 072K  
 TNT MISS HONEY L9  
 CNS DREAM ON L186  
 MUIRHEAD KARISMA 61R

**BW 87 lbs Adj BW 85 lbs WT 906 lbs Adj WW 746 lbs Purebred. Polled.**

Elite purebred combination of calving ease, muscle, curve bender growth and maternal traits. A sire that carries himself freely with an awesome dam.

CE: 14.7 BW: -0.2 WW: 72.9 YW: 106 Milk: 21.8 MWWT: 58.3



Consigned by: **Cromartie Cattle Farm**

## 32 CROMARTIE 10B COMBUST 10G

1298829 CRO 10G January 21, 2019

LFE STRAIT UP 454W  
**WFL ABSOLUTE 51Y**  
 WFL MS BLACK FLASH 8068U

LFE MR LEWIS 514N  
 LFE RS AMBER 216T  
 R PLUS BLACKEDGE  
 WFL MS RED FLASH 136P

ACC1 HUSTLER 2N  
**LEXS HUSTLER 10B**  
 WANNABE UNTAMED LEXUS

SS GOLD MINE L42  
 CPR KORONA  
 MUIRHEADS LEXUS 133U  
 WANNABE REBA'S UNTAMED 2U

**BW 86 lbs Adj BW 86 lbs WT 842 lbs Adj WW 689 lbs Purebred. Polled.**

A black bull who is loaded with length, power and muscle. A true multi-dimensional bull who combines physical power and calving ease in one package. The dam has near perfect udder.

CE: 12.6 BW: 0 WW: 58.5 YW: 84.6 Milk: 19 MWWT: 48.3



Consigned by: **Cromartie Cattle Farm**

## 33 CROMARTIE 1T COBRA 11G

1298849 CRO 11G January 21, 2019

LFE VIPER 455U  
**NCB COBRA 47Y**  
 NCB MISS DREAM 22T

TNT TOP GUN R244  
 LFE CHARO 56K  
 CNS DREAM ON L186  
 NUG SANDY 506R

MUIRHEAD'S KOSMO 27N  
**WANNABE TAZMANIA 1T**  
 MUIRHEAD TEMPTRESS 12R

JDN CISCO'S PRIDE 10K  
 CZAR MS KONZES REWARD 97G  
 TCF/RCC TEMPTATION GJ640  
 CZAR MS MINDY 64J

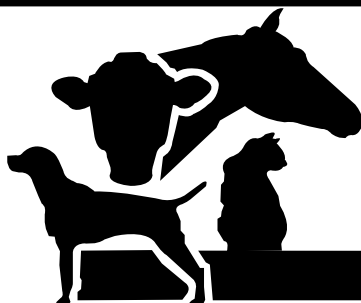
**BW 102 lbs Adj BW 100 lbs WT 892 lbs Adj WW 740 lbs Purebred. Polled.**

A very correct sound made bull with added length of body and thickness. Pedigree should make excellent commercial females and feeder calves. This picture does not do him justice.

CE: 9.8 BW: 2.0 WW: 69 YW: 104.5 Milk: 27.8 MWWT: 62.3



Consigned by: **Cromartie Cattle Farm**



# Unity Veterinary Services

Dr. Travis Ducherer • Dr. Jean Pitura

Ph: 306-228-2491

# SIMMENTALS

## 34 CROMARTIE 3T BILL 19G

1298851 CRO 19G February 12, 2019

HARVIE JDF WALLBANGER111X  
**ERIXON PIT BOSS 21Z**  
 ERIXON LADY 130U

CNS DREAM ON L186  
**WANNABE TWIZZLER 3T**  
 MUIRHEAD KARISMA 61R

SHS ENTICER P1B  
 JDF PEPSI 61U  
 COTT-GFI FULLBACK 0038N  
 BAR 40 MS 218M

NICHOLS LEGACY G151  
 CNS SHEEZA DREAM K107W  
 MUIRHEAD'S KOSMO 27N  
 DRIFTING "M" NESSY 20N

**BW 65 lbs Adj BW 81 lbs WT 674 lbs Adj WW 623 lbs Purebred. Polled.**

Smaller framed bull who should sire efficient producing females in your commercial herd. A bull with a good solid foot.

**CE: 8.4 BW: 2.3 WW: 70.6 YW: 103.5 Milk: 24.7 MWWT: 60**



Consigned by: **Cromartie Cattle Farm**

## 35 CROMARTIE 13C PRIME 2G

1298837 CRO 2G February 15, 2019

WS BEEF KING W107  
**WS PRIME BEEF Z8**  
 HSF MISS SKY 87U

KUNTZ SUPER DUTY 4Y  
**13Z SUPERDUTY 13C**  
 WANNABE RASCAL BOMBSHELL

WS BEEF MAKER R13  
 WS MISS DREAMBOAT T17  
 ER BIG SKY 545B  
 HSF FORTUNATAS QUO 59S

NCB RED SUSPECT 30S  
 MISS R PLUS 7037T  
 MUIRHEADS BOMBSHELL 50W  
 WANNABE TEQUILA'S RASCAL

**BW 85 lbs Adj BW 86 lbs WT 942 lbs Adj WW 858 lbs Purebred. Polled.**

One of the most dynamic calving ease, spread maternal and carcass sires that you will find. Both sides of the pedigree simply loaded from a maternal view. This sire travels freely and has a great solid foot under him.

**CE: 12.3 BW: 1.0 WW: 79.4 YW: 119.7 Milk: 22 MWWT: 61.7**



Consigned by: **Cromartie Cattle Farm**



**CWRS**  
**AAC Brandon**  
**AAC Alida VB**  
**AAC Redberry**  
**AC Shaw VB**  
**YELLOW PEAS**  
**CDC Spectrum**  
**RED LENTILS**  
**CDC Proclaim**

**Dan and Becky Huber**  
**Box 191, Landis, SK S0K 2K0**  
**306-658-4200**

**Cell: Dan 306-948-7515 | Cell: Becky 306-948-7506**



# SIMMENTALS

## 36 RRH GATOR 3G

1280297 RRH 3G January 8, 2019

KUNTZ MARSHALL 12Y  
KUNTZ SHERIFF 8A  
PEACOCK'S LI'L NETTIE 23Y

BMD RED WALKING TALL 13W  
TIMBER WENDY 3W  
MUIRHEAD'S KOSMO 27N  
MUIRHEAD NETTIE 5W

SUNNY VALLEY SIRLOIN 16B  
RRH MS SANSa 3E  
MISS GJR 50Y

HARVIE JDF WALLBANGER111X  
GGRR 1R BLK DESTINY 4T  
KS GEMINI U68  
MISS GJR 43T

**BW 78 lbs WW 754 lbs**

**Purebred. Homo Polled.**

3G is an outstanding Sheriff bull that won't disappoint. With a 78lb birth weight and a 754lb weaning weight he would work on heifers or cows. He is out of a first calf heifer that is the top of my pen. I am very excited about what she has become; she is a thick broody cow with excellent feet and an udder that should last years. Be sure to have a look at him on sale day.

**CE: 12.4 BW: -0.6 WW: 67.9 YW: 101.7 Milk: 25.8 MWWT: 59.8**



Consigned by: **Double R Simmentals**

## 37 RRH GRAND MARNIER

1280294 RRH 6G January 10, 2019

TNT BOOTLEGGER Z268  
MRL RED WHISKEY 101B  
MRL MISS 677Y

DCR MR MOON SHINE X102  
TNT MISS W70  
KOP CROSBY 137W  
MRL MISS 355T

SUNNY VALLEY SIRLOIN 16B  
RRH MS DIAMOND 10D  
MISS GJR 50Y

HARVIE JDF WALLBANGER111X  
GGRR 1R BLK DESTINY 4T  
KS GEMINI U68  
MISS GJR 43T

**BW 90 lbs WW 804 lbs**

**Purebred. Homo Polled.**

6G has been one of my favorites since he hit the ground. At a very young age he stood out amongst the others he had a square hip and lots of length. He is sired by Red Whiskey who is a popular A.I sire known for his consistency in his calves.

**CE: 5.4 BW: 4.5 WW: 84.8 YW: 122.2 Milk: 19.4 MWWT: 61.8**



Consigned by: **Double R Simmentals**

## 38 RRH GROWLER 13G

1280301 RRH 13G January 21, 2019

WHEATLAND BULL 131L  
RUST BULL 66Z  
TNT MISS SADIE M68

NICHOLS BLK DESTINY D12  
WHEATLAND LADY 908J  
TNT IMPACT H21  
TNT MISS JADEN J318

KUNTZ SHERIFF 8A  
RRH MS ARYA 2E  
ERIXON LADY 47C

KUNTZ MARSHALL 12Y  
PEACOCK'S LI'L NETTIE 23Y  
NUG ROYAL RED 324A  
ERIXON LADY 75X

**BW 92 lbs WW 678 lbs**

**Purebred. Homo Polled.**

13G is a dark red bull out of a Sheriff heifer. He is long and smooth with a caving ease look to him. Being sired by the A.I sire Rust 66Z he is backed by a very strong maternal pedigree.

**CE: 8.7 BW: 2.0 WW: 61.7 YW: 93.8 Milk: 19.1 MWWT: 40**



Consigned by: **Double R Simmentals**

# BATTLEFORDS ANIMAL HOSPITAL

• Dr. T. Schmidt • Dr. S. Carley

• Dr. C. Johnson

306-446-8387

#7A 11204 Railway Avenue East • North Battleford, SK S9A 2R7



- \* Custom Corral Cleaning \*
- \* Vertical Beater Spreaders \*
- \* Bobcat with Rubber Tracks \*
- \* Payloader \*



# NEUFELD Enterprises

For Rates Call  
**306-220-5013 or 306-467-5013**



**COWGO**  
 Loading Chute

Doug Green  
 Box 83  
 Daysland, AB T0B 1A0

OPEND RANGE LTD

Phone: 403-741-8982  
 Website: [opendrange.com](http://opendrange.com)  
 Email: [info@opendrange.com](mailto:info@opendrange.com)



# CHAROLAIS

**39**

## DPS VIKING 2G

MC772873 DPS 2G January 10, 2019

MERIT 7329T  
**WINN MANS CHAVEZ 826Y**  
 WINN MANS BREATHLESS 826U

SPARROWS KINGSTON 139Y  
**SOS DAPHNE 96E**  
 SOS MISS WHISTLER 31X

HTA RHAPSODY 390N  
 MERIT BECKY 2150M  
 WINN MANS LANZA 610S  
 WINN MANS BREATHLESS 160L

WINN MANS LANZA 610S  
 SPARROWS DELIGHT 374P  
 SDC TIME OUT 88T  
 SOS PETUNIA 9T

**BW 89 lbs**  
**Adj 205 Day Wt: 725 lbs**  
 Double vaccinated with Fusogard for footrot.

**BW: 0.8 WW: 39 YW: 84 Milk: 17 TM: 36**

**Purebred. Double Polled**



Consigned by: **Swistun Charolais**

**40**

## DPS TRACER 3G

MC772838 DPS 3G January 11, 2019

HRJ CROWD FAVOURITE 515C  
**SVY SIRIUS 705E**  
 SVY STARSTRUCK 409B

SVY FOCUS PLD 15X  
**DPS AVERY 9A**  
 DPS BEAUTY 11T

SPARROWS KINGSTON 139Y  
 HRJ MISS PARIS 7S  
 TR PZC MR TURTON 0794 ET  
 SVY STARSTRUCK 8X

SVY FREEDOM PLD 307N  
 SVY STARDUST 811U  
 HTA WHITEHOT 105A  
 MXS WYOMING TUNDRA 936J

**BW 73 lbs Twin**  
**Weight on Sept 4, 2019: 820 lbs**  
 Double vaccinated with Fusogard for footrot.

**BW: 1.6 WW: 41 YW: 74 Milk: 22 TM: 42**

**Purebred. Double Polled**



Consigned by: **Swistun Charolais**

**41**

## DPS AMSTERDAM 8G

MC772868 DPS 8G January 15, 2019

WC DOUBLETREE 2009 P  
**HRJ MAVERICK 556C**  
 PRO-CHAR CASSY 32A

CJC SYMBOL B1067P  
**DPS CARDINAL 19E**  
 DPS MIA 22A

LT LONG DISTANCE 9001 PLD  
 WC PRAISE 0058 P  
 SPARROWS KINGSTON 139Y  
 CST MISS CASTINE 7S

CJC SYMBOL Y771 P  
 CJC MS COBALT X282  
 WHITECAP TRILOGY 204T  
 DPS REBECCA 10U

**BW 83 lbs**  
**Adj 205 Day Wt: 727 lbs**  
 Double vaccinated with Fusogard for footrot.

**BW: -2.6 WW: 37 YW: 65 Milk: 24 TM: 42**

**Purebred. Double Polled**



Consigned by: **Swistun Charolais**

**42**

## DPS TORPEDO 14G

MC772816 DPS 14G January 19, 2019

HRJ CROWD FAVOURITE 515C  
**SVY SIRIUS 705E**  
 SVY STARSTRUCK 409B

PLEASANTDAWN MARSHALL70P  
**DPS DOLLY 5X**  
 DPS MISS PERFECTION 3L

SPARROWS KINGSTON 139Y  
 HRJ MISS PARIS 7S  
 TR PZC MR TURTON 0794 ET  
 SVY STARSTRUCK 8X

LEK ARNOLD 14J  
 PLEASANT DAWN GERI 702J  
 P-3 PERFECT LAD 3-203C  
 DPS MISS MONTE THE II 3E

**BW 73 lbs Twin**  
**Weight on Sept 4, 2019: 770 lbs**  
 Double vaccinated with Fusogard for footrot.

**BW: 1.6 WW: 42 YW: 80 Milk: 23 TM: 44**

**Purebred. Double Polled**



Consigned by: **Swistun Charolais**

# CHAROLAIS

**43**

## DPS DRAGON 19G

MC772852 DPS 19G January 21, 2019

HRJ CROWD FAVOURITE 515C  
**SVY SIRIUS 705E**  
 SVY STARSTRUCK 409B

SPARROWS ELDORADO 361L  
**DPS DARCY 1C**  
 MXS CHERI 303A

SPARROWS KINGSTON 139Y  
 HRJ MISS PARIS 7S  
 TR PZC MR TURTON 0794 ET  
 SVY STARSTRUCK 8X

SPARROWS ALLIANCE 513G  
 SPARROWS HEARTBREAK 261J  
 MERIT ROUNDUP 9508W  
 MXS CHERI 182Y

**BW 87 lbs**  
**Adj 205 Day Wt: 726 lbs**  
 Double vaccinated with Fusogard for footrot.  
**BW: -1.3 WW: 41 YW: 78 Milk: 16 TM: 36**

**Purebred. Double Polled**



Consigned by: **Swistun Charolais**

**44**

## DPS PHOENIX 22G

MC772855 DPS 22G January 24, 2019

HRJ CROWD FAVOURITE 515C  
**SVY SIRIUS 705E**  
 SVY STARSTRUCK 409B

CEDARDALE ZEAL 125Z  
**DPS CHERRY JACK 23C**  
 DPS CHIQUITA 19Z

SPARROWS KINGSTON 139Y  
 HRJ MISS PARIS 7S  
 TR PZC MR TURTON 0794 ET  
 SVY STARSTRUCK 8X

CEDARDALE TYRANT 31T  
 CEDARDALE MISS 64T  
 SVY FOCUS PLD 15X  
 MXS CAPPUCCINO 855U

**BW 104 lbs**  
**Adj 205 Day Wt: 768 lbs**  
 Double vaccinated with Fusogard for footrot.  
**BW: 1.7 WW: 45 YW: 79 Milk: 22 TM: 44**

**Purebred. Double Polled**



Consigned by: **Swistun Charolais**

**45**

## DPS CHOPPER 30G

MC772850 DPS 30G January 31, 2019

CIRCLE CEE LEGEND 307A  
**DPS ECLIPSE 10E**  
 DPS FRENCH FRY 13C

SVY FOCUS PLD 15X  
**DPS VENUPEDE 41B**  
 DPS TARA 13U

LT LEDGER 0332 P  
 CIRCLE CEE STUNNING 125Y  
 MXS CANYON 136Y  
 MXS BEAUTY 740T

SVY FREEDOM PLD 307N  
 SVY STARDUST 811U  
 SOS POLLED DETONATOR 8M  
 DPS MISS HOT STUFF 1H

**BW 91 lbs**  
**Adj 205 Day Wt: 751 lbs**  
 Double vaccinated with Fusogard for footrot.  
**BW: -1.1 WW: 39 YW: 80 Milk: 26 TM: 45**

**Purebred. Double Polled**



Consigned by: **Swistun Charolais**



*Clean View  
 Grain Cleaning*

For more details and pricing phone  
**Blake Wakelin**

**at 306-398-2888, evenings or 306-843-7491, days**

### Mobile Grain Cleaning

Save on trucking costs, let us come to you!

- *Wheat*
- *Peas*
- *Barley*
- *Oats*
- *Lentils*
- *And More*





# CHAROLAIS

## 46 DPS SLEDGE 33G

MC772851 DPS 33G February 2, 2019

HRJ CROWD FAVOURITE 515C  
SVY SIRIUS 705E  
SVY STARSTRUCK 409B

JDJ SMOKESTER J1377 P ET  
MXS SMOKEN MAID 487B  
MXS LANDMARK'S MAID 130Y

SPARROWS KINGSTON 139Y  
HRJ MISS PARIS 7S  
TR PZC MR TURTON 0794 ET  
SVY STARSTRUCK 8X

LHD CIGAR E46  
JD MS COMMANDER B309  
SPARROWS LANDMARK 963W  
MXS MIKADO'S MAID 141L

BW 101 lbs  
Adj 205 Day Wt: 732 lbs  
Double vaccinated with Fusogard for footrot.  
BW: 2.3 WW: 43 YW: 76 Milk: 24 TM: 46

Purebred. Double Polled



Consigned by: **Swistun Charolais**

## 47 DPS PITBOSS 38G

MC772856 DPS 38G February 21, 2019

HRJ CROWD FAVOURITE 515C  
SVY SIRIUS 705E  
SVY STARSTRUCK 409B

GBROS AUGUSTUS 348A  
DPS APRIL 26C  
DPS AVERY 9A

SPARROWS KINGSTON 139Y  
HRJ MISS PARIS 7S  
TR PZC MR TURTON 0794 ET  
SVY STARSTRUCK 8X

ACC I AM LEGEND 914W  
G. BROS RELAY 223Y  
SVY FOCUS PLD 15X  
DPS BEAUTY 11T

BW 91 lbs  
Adj 205 Day Wt: 821 lbs  
Double vaccinated with Fusogard for footrot.  
BW: -0.5 WW: 45 YW: 83 Milk: 21 TM: 44

Purebred. Double Polled



Consigned by: **Swistun Charolais**

## 48 DPS QUARTZ 40G

MC772819 DPS 40G March 11, 2019

CIRCLE CEE LEGEND 307A  
DPS ECLIPSE 10E  
DPS FRENCH FRY 13C

PLEASANTDAWN MARSHALL70P  
DPS HOLLY 18X  
MXS BEAUTY 740T

LT LEDGER 0332 P  
CIRCLE CEE STUNNING 125Y  
MXS CANYON 136Y  
MXS BEAUTY 740T

LEK ARNOLD 14J  
PLEASANT DAWN GERI 702J  
SVY DELIVERANCE PLD 401P  
MXS BEAUTY 422P

BW 91 lbs  
Adj 205 Day Wt: 832 lbs  
Double vaccinated with Fusogard for footrot.  
BW: -1.3 WW: 47 YW: 95 Milk: 27 TM: 50

Purebred. Double Polled



Consigned by: **Swistun Charolais**

Ron Toews

# NORTHWEST TUBGRINDING

Serving Saskatchewan Cattlemen

306-883-7124

Box 495 Leoville SK S0J 1N0

rtnews63@gmail.com

**NORTHWEST'S BULL SALE 2020  
WOULD LIKE TO THANK THE FOLLOWING BUSINESSES  
FOR THEIR JACKET SPONSORSHIP.**

**RBC - North Battleford**  
(306) 937-5000

**Cavalier Agrow Ltd.**  
Meota 306-892-2476

**West Central Pelleting Ltd.**  
Wilkie 306-843-3399

**Valley Ford Sales**  
North Battleford 306-445-4491

**Maxim Custom Spraying Inc.**  
Arron Lorenz - Wilkie - 306-843-7465

**AGRI Team Services Inc.**  
Hafford 306-246-4300 Glaslyn 306-342-4522

**Masterfeeds - An Altech Company**  
Kurtis Reid 306-220-2226

**Bernie's Grain Hauling Ltd.**  
North Battleford 306-441-6185

**Fountain Tire**  
North Battleford 306-445-2323

**Huber Farms**  
Landis, SK 306-658-4200

**Bridges GM**  
North Battleford 306-445-3300



**RISROCK AG**  
SERVICES INC

Boyd & Karri Risling 1-306-843-7109

**Corn, Soy Beans,  
Alfalfa & Canola Seed**





# TERMS AND CONDITIONS

## TERMS

The terms of the sale are cash or cheque payable at par at Ritchie Bros Auctioneers North Battleford Site unless satisfactory credit arrangements have been made previous to the sale. The right of property shall not pass until after settlement is made. Ritchie Bros Auctioneers reserves the right to require a certified cheque as settlement before releasing any sale cattle. Should any purchaser fail to settle for his purchase Ritchie Bros Auctioneers reserves full power to resell the animal to the best advantage either publicly or privately, without further notice. Any loss arising from such resale together with keep and all other expenses shall be payable by the defaulter. All settlements must be made with the clerks of the sale before any cattle will be released.

## BID

Every animal consigned to the sale must be sold by auction. No private sales will be allowed except as otherwise provided for in the terms and conditions. No by-bidding will be permitted. Each animal will be sold to the highest bidder.

## DISPUTES

In cases of disputes, bidding will be reopened between the parties involved. If no further bid is made the buyer will be the person from whom the auctioneer accepted the last bid. The auctioneer's decision in such matters will be final.

## PURCHASER'S RISK

Each animal becomes the risk of the purchaser as soon as sold. Animals will be cared for at the purchaser's risk for a reasonable length of time.

## ANNOUNCEMENTS

from the auction block will take precedence over the printed matter in this catalogue. Buyers are therefore cautioned to pay attention to any such announcements.

## CERTIFICATE OF REGISTRY

A registration/recordation certificate issued and duly transferred will be furnished to the buyer of each animal after settlement has been made. It is the responsibility of the buyer to determine the acceptance of this certificate.

## SHIPPING

Assistance will be given in making shipment after the sale but no risk is assumed by Ritchie Bros Auctioneers or Seller. Expenses incurred are the responsibility of the purchaser. Purchasers are requested to furnish shipping instructions when making settlement.

## BREEDERS GUARANTEE

As per Breed guidelines. Copies are available at the sale settlement desk to be picked up by the buyer at any time.

## HEALTH

It is the buyer's responsibility to determine health requirements for importing any animal into his province or state. Ritchie Bros Auctioneers assumes no responsibility for the health status of any animal in the sale.

## NORTHWEST'S BULL SALE

## ACCIDENTS

Although every precaution will be taken to protect the safety and comfort of buyers, neither Ritchie Bros Auctioneers or the auctioneer assumes any responsibility in this matter and disclaims any liability legal or otherwise in the event of accident or loss of property.

## RIGHTS AND OBLIGATIONS

The above terms and conditions of the sale shall constitute a contract between the buyer and the seller and be equally binding to both. Resale of animals following purchase in this sale shall constitute a separate transaction and the rights and obligations of the two parties connected thereto are not covered by the terms and conditions of this sale.

## RITCHIE BROS AUCTIONEERS IS AGENT ONLY

It is to be clearly understood that Ritchie Bros Auctioneers is only acting as a medium between buyer and seller and is not in any way responsible for any failure on the part of either party to live up to his obligations, neither does Ritchie Bros Auctioneers assume any financial obligations to collect or enforce collection of any monies between parties, and any legal action that may, in exceptional cases, be taken, must be between buyer and seller.

The Auctioneer shall have the right to refuse bids from anyone who has a previous record of default in payment or who has not made proper credit clearance prior to the sale with the owner or Sale Managers.

**GREAT PRINTING!  
GREAT SERVICE!  
and that's**

**NO  
BULL!**



**ULTRA  
PRINT**

1981 - 100th Street North Battleford, SK  
Phone (306) 445-5050 • Fax (306) 445-8771  
Toll Free 1-888-25PRINT  
E-mail: [info@ultraprint.ca](mailto:info@ultraprint.ca) • Website: [www.ultraprint.ca](http://www.ultraprint.ca)



Introducing **NEW** Pioneer® brand corn seed products with industry-leading yield potential and maturities developed for Western Canada. Put the superior genetic potential of Pioneer® brand corn hybrids to work for you. Ask us for a seed recommendation for your fields.

## GRAZING CORN

Corn offers a high quality and high quantity feed choice that will outperform other feed options available to producers, for winter grazing beef cattle.

In grazing situations, corn will help lower your cost of production, increase your cow-days per acre, and maintain cow health and condition throughout the winter grazing season.

Some things to consider when planning for winter grazing your corn crop:

### Corn Hybrid Choice & Management for Grazing

- Grazing corn should be at 30-50% milk line at first killing frost
- Choose a hybrid that is 150-300 CHU later than your corn heat unit area to reduce risk of acidosis and increase palatability
- Plant multiple hybrids to cover off an earlier or later season – 2-3 hybrids spread over 100-200 CHU differences

### How many acres do I need to graze my cows?

- **Expect between 150 – 300 cow-days per acre**  
 e.g. 200 cows grazing for 30 days will need:  
 30 days X 200 cows = 6000 cow grazing days required.  
 Based on 200 cow-days per acre,  
 you would require: 6000 cow grazing days ÷ 200 cow-days per acre = 30 acres of corn

## SILAGE CORN

Our corn silage products provide excellent early starch production for high energy feed and an early silage harvest. They also feature excellent stay green characteristics for green harvest and high tonnage.

### Key Benefits of Planting Corn for Silage

- Corn has lower starch digestion rates per hour in rumen than barley, which means possibly lower incidence of acidosis, and better balance between rumen fermentation and intestinal digestion
- When considering the best silage option for your operation, look first at the importance of starch in the animal diet.
- Corn produces almost 2X the tons of wet silage harvested per acre than barley
- Corn also has better water use efficiency compared to wheat, barley or oats (Teutsch, 2013)

### Things to Keep in Mind About Corn Silage

- When considering the best silage option for your operation, remember the importance of starch as an energy source in the diet
- At silage maturity, the corn plant is still producing starch - the longer it stays in the field, the more starch is produced
- To ensure silage success adhere to proper silage whole plant moisture when determining harvest timing
- When comparing costs of barley silage versus corn silage, use a per ton basis - while per acre costs are higher for corn silage, production costs on a per ton basis favour corn silage

**NACHTEGAELE  
AGRI SERVICES**

FARMERS SERVING FARMERS

**306-445-3347**

**The majority of the feed value of corn comes from the cob. Pioneer® corn hi-breds deliver the best combination of maturity and cob yield in Western Canada. Big mature corn cobs will deliver big mature bulls.**

To check out yield results in your area go to [www.pioneer.com/yield](http://www.pioneer.com/yield)





*Partners in  
possibility.*

At Nutrien Ag Solutions™, we want to help you grow a productive forage crop. Our impressive line-up of Proven® Seed forage products are backed by industry leading genetics and expert agronomic advice. With our extensive forage seed offering, we have an option that fits your acres. [NutrienAgSolutions.ca](https://www.nutrienag.com)

 **Nutrien**  
Ag Solutions™

Visit your local Nutrien Ag Solutions location today.

WILKIE • 306.843.2122

HAMLIN • 306.445.6611

ROCKHAVEN • 306.398.2608

LANDIS • 306.658.2002

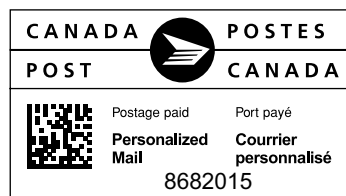
CUT KNIFE • 306.398.2710

SPIRITWOOD • 306.883.2076

EDAM • 306.397.2251

PARADISE HILL • 306.344.2229

**RETURN TO:**  
Donnie Swistun  
RR 1  
North Battleford, SK  
S9A 2X3



**VIDEO  
SALE!**

View the bulls on location prior to the sale and the day before at the open house as they will not be going through the sale ring as this is a video sale. Videos and catalogue can be seen online at  
**[www.buyagro.com](http://www.buyagro.com)**

**With a buyer's number, you are eligible to win one of two \$500.00 credit vouchers towards your purchase of a 2020 bull. Winners will be announced prior to the sale.**

Grass changes with the season.  
Shouldn't your mineral?

**Right Now<sup>®</sup>  
Emerald Mineral  
with Altosid<sup>®</sup>**

THE RIGHT NOW<sup>®</sup> MINERAL PROGRAM  
HELPS YOU MAKE SURE THAT THE  
RIGHT MINERALS GO TO THE RIGHT  
COWS AT THE RIGHT TIME.

Ask your Cargill<sup>®</sup> consultant how Right Now<sup>®</sup> Mineral can help. You'll get answers that go far beyond black and white. For more information, email us at [beef\\_can@cargill.com](mailto:beef_can@cargill.com).

