

ACME
TC CLADDING



History

Fired clay is in our DNA. And from the day we were founded, architects have challenged us to extend and adapt this timeless material for use in their most innovative projects. Acme TC Cladding is the latest chapter of a collaboration between architect and brickmaker now in its third century.

Like brick, terracotta has roots in antiquity and has evolved into a highly engineered product. We use modern extrusion techniques to manufacture large-format panels that can be installed at any height – by themselves or with other cladding materials. Over the last decade panels have been installed on 76.4 million square feet of exterior wall in 32 countries. Acme TC Cladding comes in 28 vibrant, earth-derived colors and 5 distinct product lines: tile, rainscreen, rainscreen light, sealed, and sunshade.

This beautiful innovation also draws on the expertise of IBP, an Acme subsidiary, which developed the Fast Track masonry support system.

As with all products offered by Acme, the commitment behind Acme TC Cladding is more than 125 years old. Our desire and dedication is to help today’s architects execute their most exciting designs in natural clay materials that withstand the test of time.

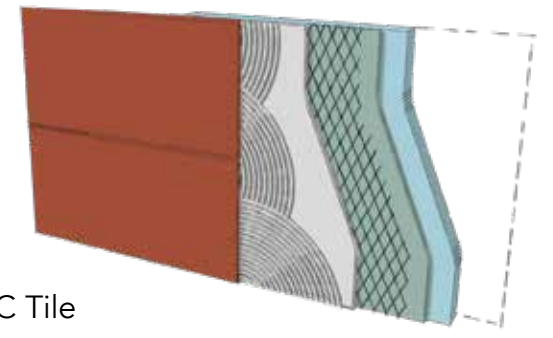


Natural Clay

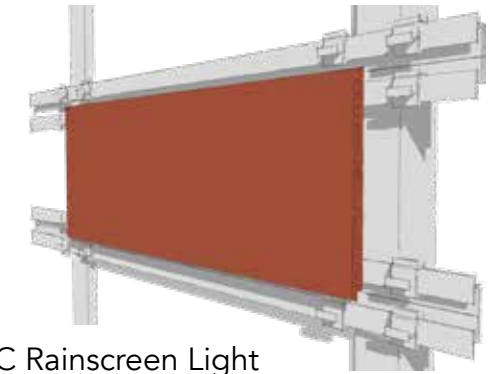


Table of Contents

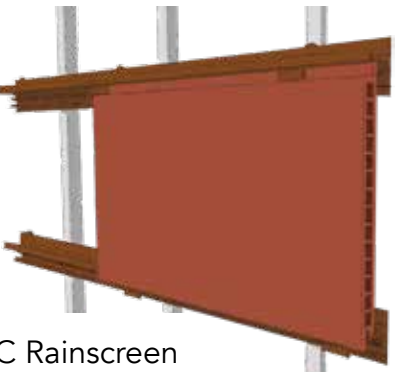
- 2 History
- 4-5 Projects
- 6-9 TC Tile
- 10-13 TC Rainscreen Light
- 14-17 TC Rainscreen
- 18-21 TC Sealed
- 22-25 TC Sunshade
- 26-27 Textures, Shapes & Color Options
- 28 Glazed, Engobed & Digital Printed Options
- 29 Corner Options
- 30-31 Customization



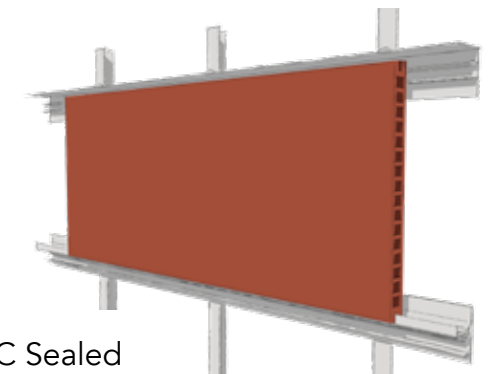
TC Tile



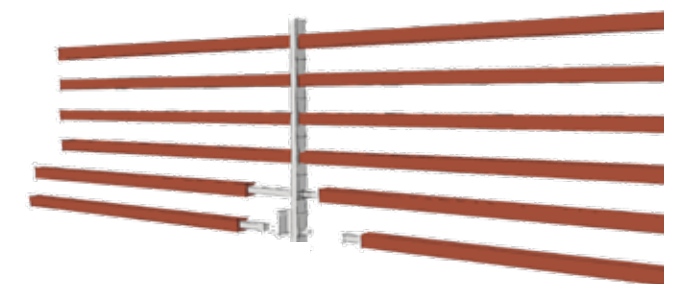
TC Rainscreen Light



TC Rainscreen



TC Sealed



TC Sunshade



Acme TC Cladding consists of five product lines: Tile, Rainscreen Light, Rainscreen, Sealed, and Sunshade.

These products have an international pedigree. Over the past decade, extruded terracotta panels have been installed on thousands of buildings around the world. These precision-engineered units offer the traditional benefits of fired clay – beauty, durability, water and fire resistance – yet are light enough to be installed at virtually any height.

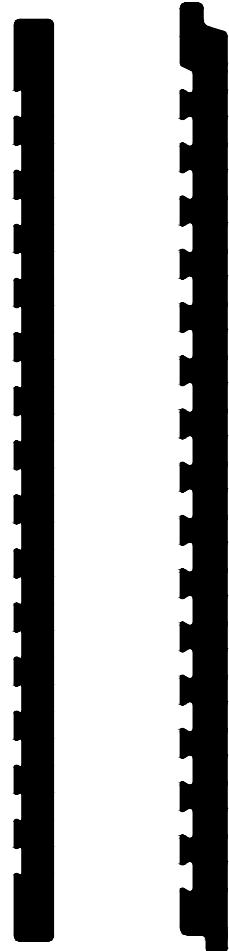
TC Rainscreen & TC Sunshade
Custom Glazed White
Sunshade: 55mm x 220mm x 1800mm
Rainscreen: 400mm x 1200mm x 30mm





TC Tile

Each TC Tile production run is tailored to the specific color, shape, and texture characteristics unique to your project. Profiles, shown to the left, are available with ship-lap and square edges. The panels can be 6 to 24 inches tall and up to 24 inches long and a maximum of 3 square feet in face area per code. Ship-lap panels are only available in 12mm thickness. This product is best suited for walls. Corner edges can be miter cut at the plant, or metal trim can be used as outside corner treatments. Custom sizes, shapes, colors, and glazing are available upon request.

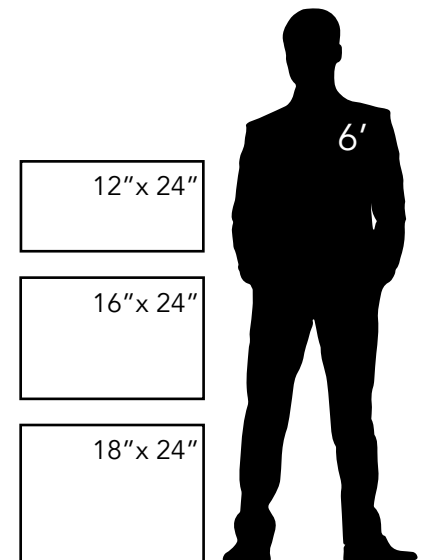
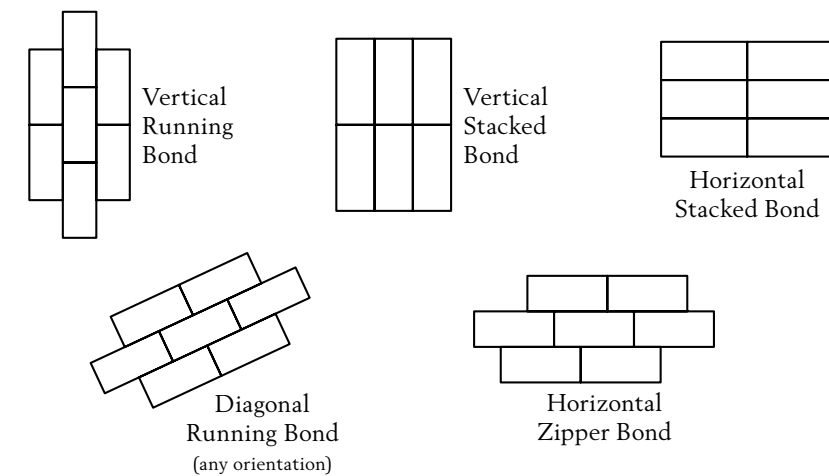


Specifications

Standard Size	Thickness	Colors	Finishes	Weight	Coursing	Installation
12" x 24" 16" x 24" 18" x 24"	10 mm or 12mm	See pages 27-28 for options.	See page 26 for options.	~4 lbs per square foot for 10mm	No limitations in coursing or orientation	Adhered or embedded in precast concrete
min 6" high max 24" high max 24" long	solid panel with grooved backing			~5 lbs per square foot for 12mm		

Coursing Patterns

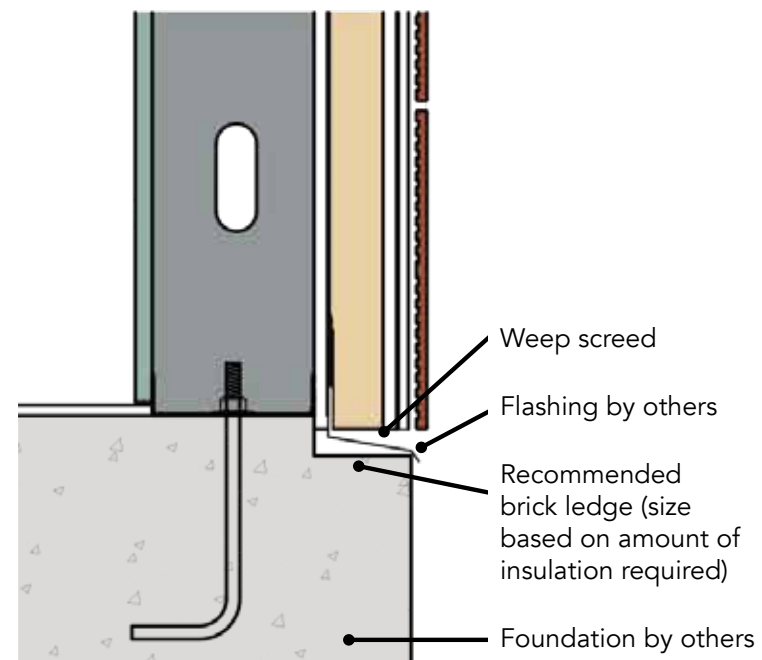
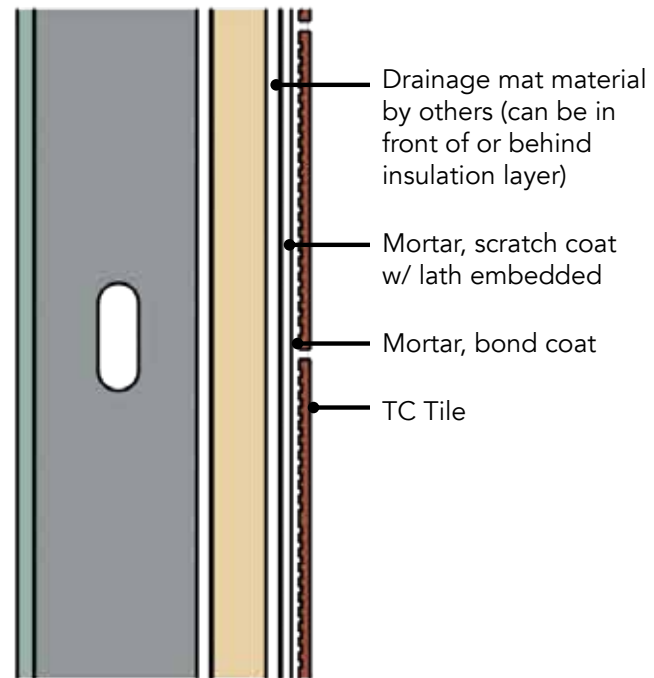
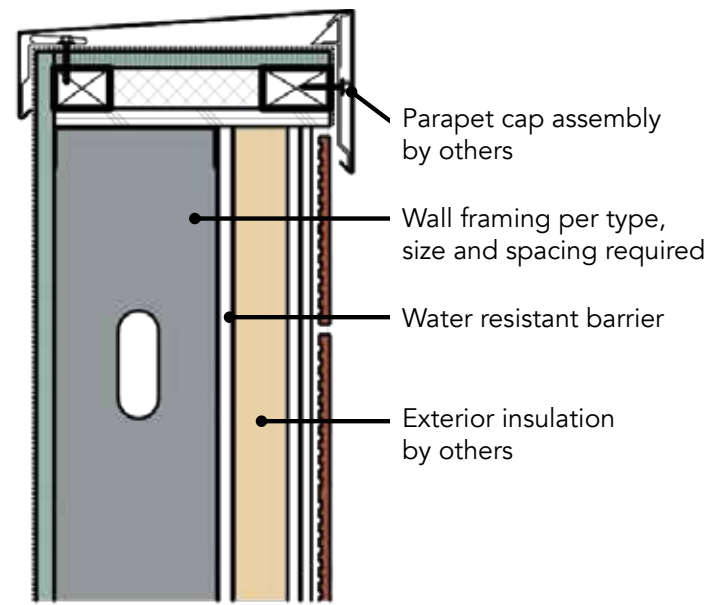
No Limitations. Suggested coursing patterns shown.



TC Rainscreen Light
18in x 36in x 18mm in Tumbleweed
Smooth Texture



Smooth panels in custom colors
300mm x 600mm x 10mm



Characteristics

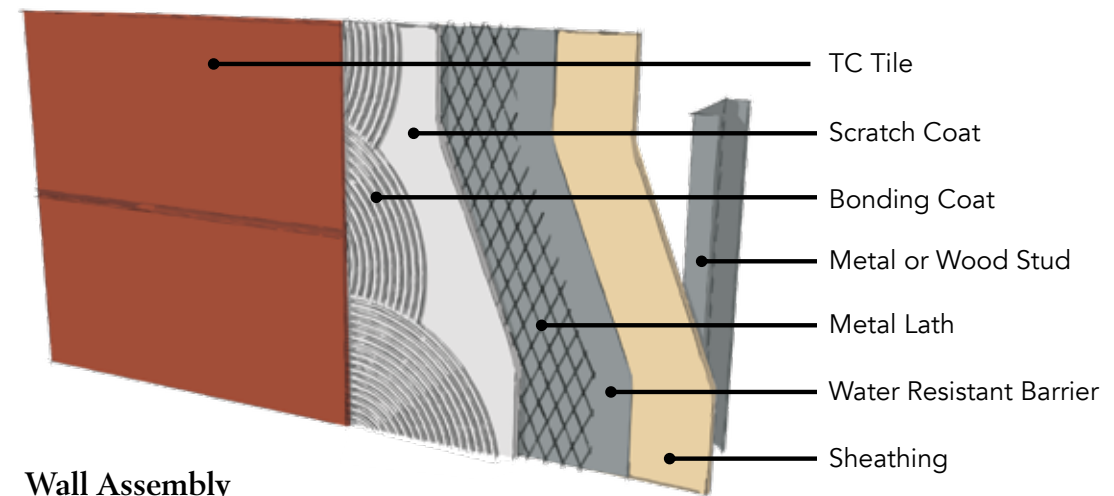
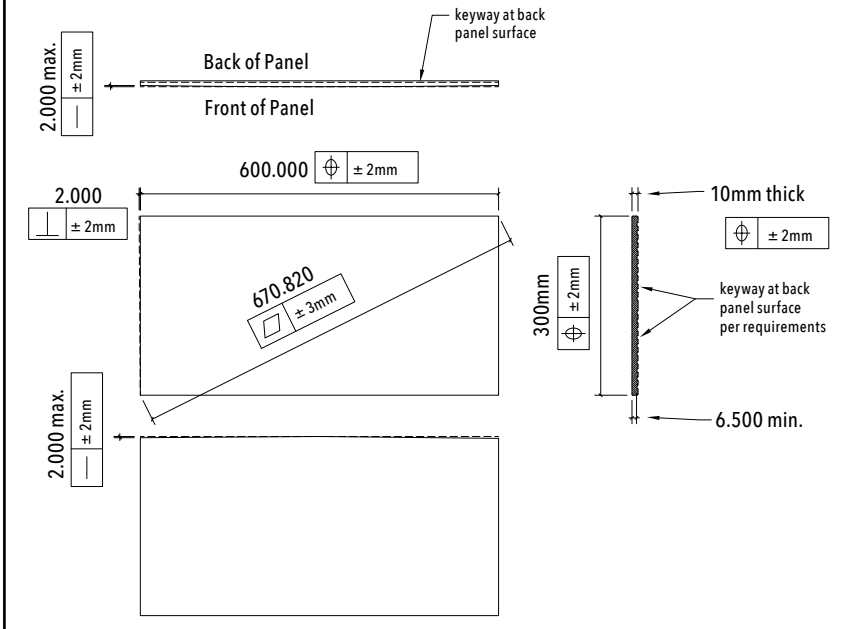
-  Absorption
ASTM C67-02C
7%
-  Moisture Expansion
ISO 10545-10
< 0.02 - 0.03
-  Modulus of Rupture
ASTM E880/C880M-15
1370 psi
-  Freeze & Thaw
ASTM C67
Tested to 50 Cycles & Passed
-  Reaction to Fire
ASTM C67
Non flammable
-  Breaking Strength
ASTM E880/C880-15
127 lbf
-  Efflorescence
ASTM C67-02C
No efflorescence
-  Chemical Resistance
ASTM C67-02C
Resistant to low concentrations of acid and alkalis



Linear panels with groove in Nutmeg
115mm x 600mm x 15mm

Panel Manufacturing Tolerances

10x300x600mm



Wall Assembly



TC Rainscreen Light

Each TC Rainscreen Light panel production run is tailored to the specific color, shape, and texture characteristics unique to your project. These panels have a ship-lapped profile, as shown left, with a minimum height of 6 inches, maximum height of 24 inches, and maximum length of 4 feet. TC Rainscreen Light is attached to Fast Track Light. This is the thinner of our two open ventilated facade options. TC Rainscreen Light allows moisture drainage and air flow through the back of the panels. Refer to page 29 for details on corners and rain blockers. Panel edges are cut per shop drawings. This product is best suited for walls and soffits. Custom sizes, shapes, colors, and glazing are available upon request.



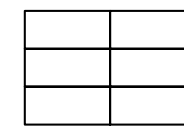
Specifications

Standard Size	Thickness	Colors	Finishes	Weight	Coursing	Installation
12" x 24" 12" x 36" 16" x 36" 18" x 36" min 6" high max 24" high max 4' long	18mm panels cored according to production specifications	See pages 27-28 for options.	See page 26 for options.	~6.4 lbs per square foot	Continuous horizontal, flexible vertical joint	Attached to Fast Track Light Brackets with clips at each panel corner inserted into slots at the back of the panel.

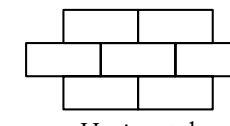


Coursing Patterns

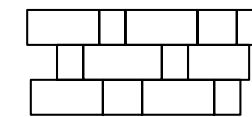
Suggested coursing patterns shown.



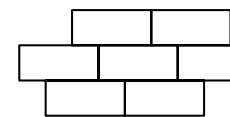
Horizontal Stacked Bond



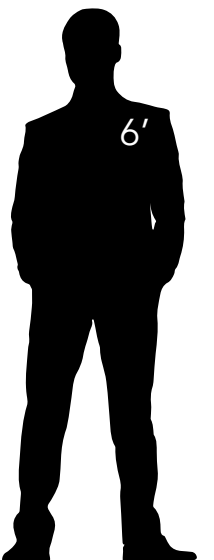
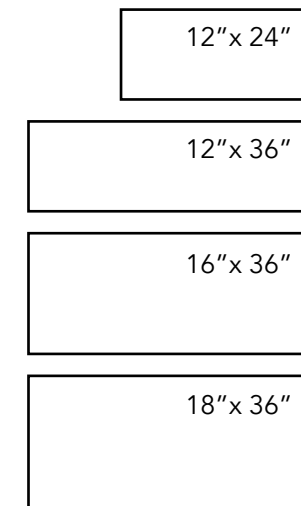
Horizontal Running Bond



Horizontal Random Running Bond



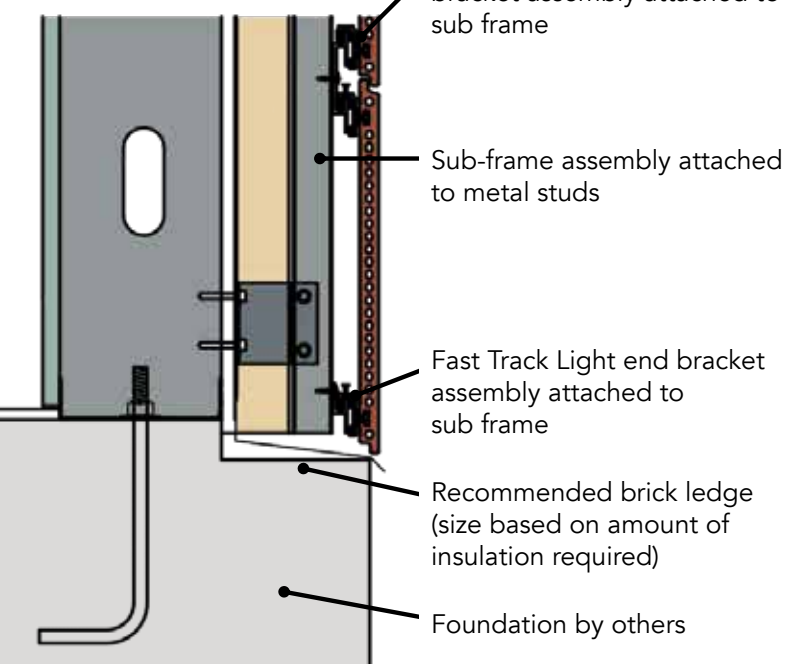
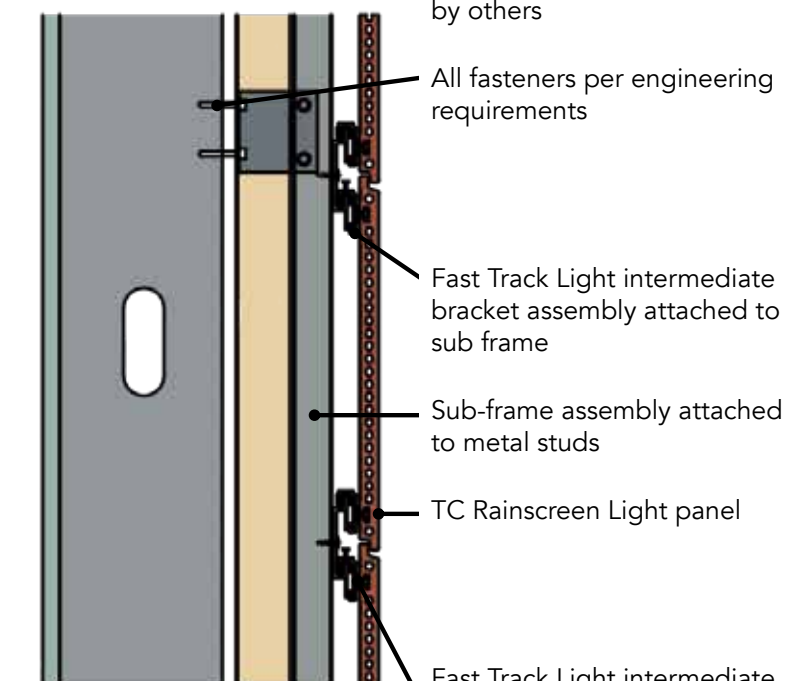
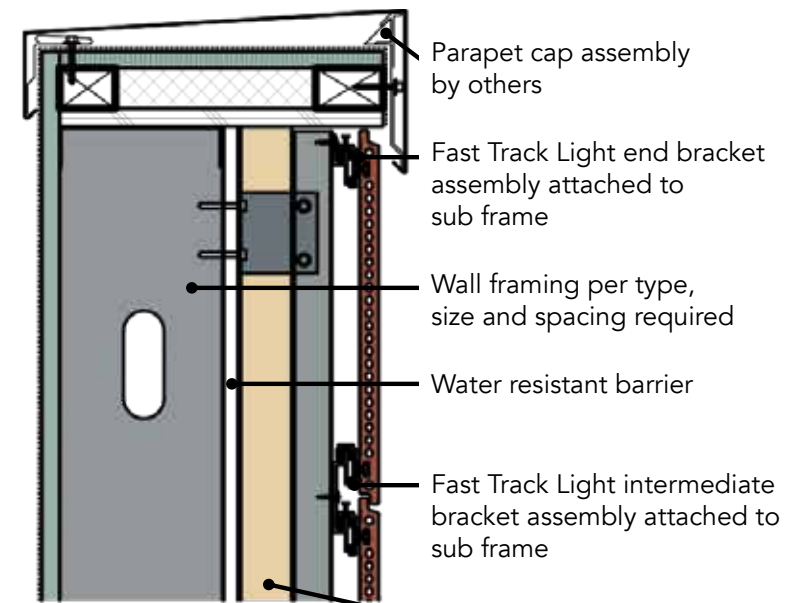
Horizontal Zipper Bond



Smooth panel in Linen and Sierra Sands
500mm x 1200mm x 18mm



Smooth panel in Desert Stone
400mm x 900mm x 18mm



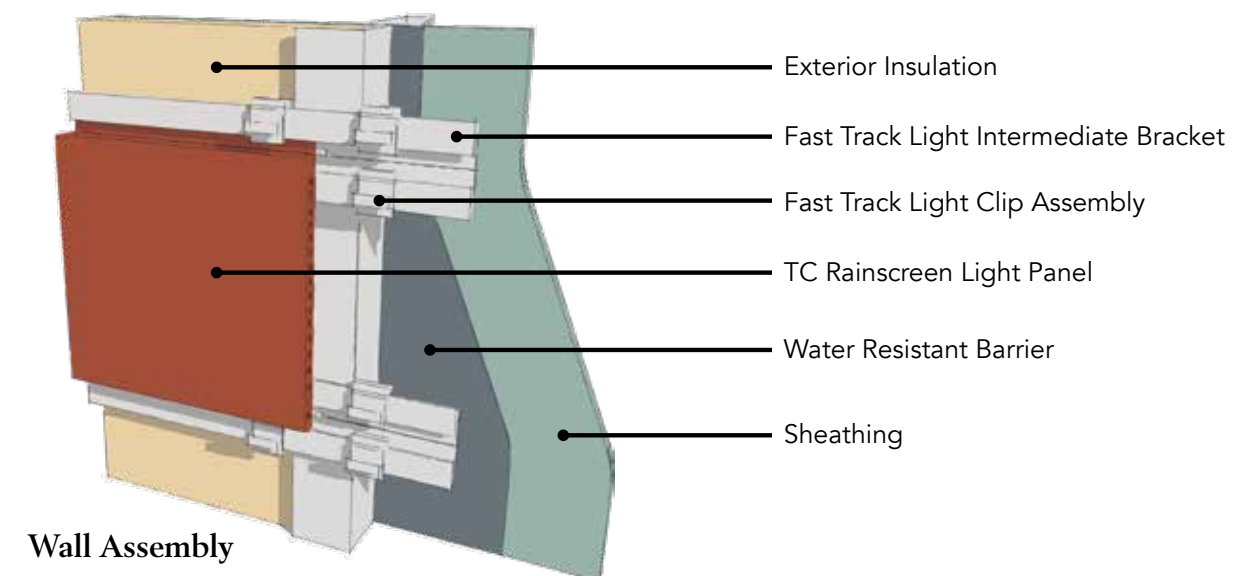
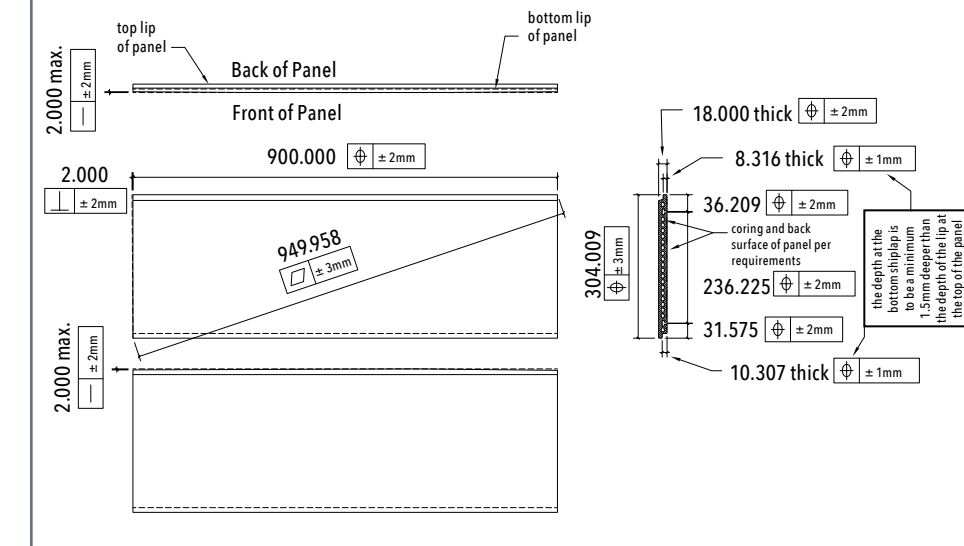
Characteristics

-  Absorption
ASTM C67-02C
0.8 - 3.1%
-  Moisture Expansion
ISO 10545-10
< 0.02 - 0.03%
-  Modulus of Rupture
ASTM E880/C880M-15
3843.5 psi
-  Freeze & Thaw
ASTM C67
Tested to 50 Cycles & Passed
-  Reaction to Fire
ASTM C67
Non flammable
-  Breaking Strength
ASTM E880/C880-15
903.7 lbf
-  Efflorescence
ASTM C67-02C
No efflorescence
-  Chemical Resistance
ASTM C67-02C
Resistant to low concentrations of acid and alkalis



Sanded surface panels in Silver Mist
250mm x 18mm

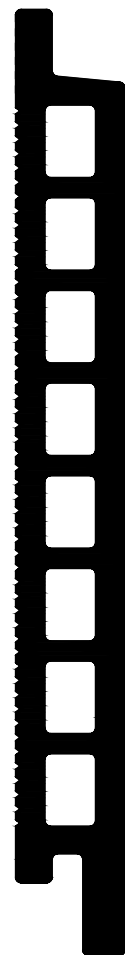
Panel Manufacturing Tolerances 18x300x900mm



Wall Assembly



TC Rainscreen



Each TC Rainscreen panel production run is tailored to the specific color, shape, and texture characteristics unique to your project. These panels have a ship-lapped profile, shown left, with a minimum height of 6 inches, maximum height of 24 inches, and maximum length of 5'-6". TC Rainscreen is attached to Fast Track Bronze. This is an open, ventilated facade system that allows moisture drainage and air flow at the back of the panels. Refer to page 29 for details on corners and rain blockers. These are best suited for walls and soffits. Panel edges are cut per shop drawings at the plant. Custom sizes, shapes, colors, and glazing are available upon request.

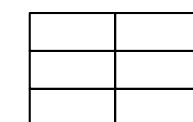


Specifications

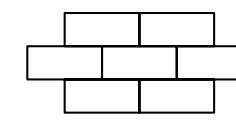
Standard Size	Thickness	Colors	Finishes	Weight	Coursing	Installation
16" x 36" 16" x 48" 18" x 36"	30mm panels cored according to production specifications	See pages 27-28 for options.	See page 26 for options.	~8.4 lbs per square foot	Continuous horizontal, flexible vertical joint, vertical orientation possible with special cut kerfs at panel ends	Panel rests on horizontal Fast Track Bronze brackets & is secured with clips at the top lip
min 6" high max 24" high max 5'-6" long						

Coursing Patterns

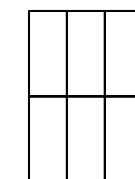
Suggested coursing patterns shown.



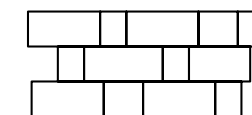
Horizontal Stacked Bond



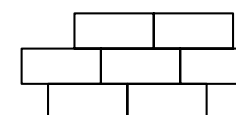
Horizontal Running Bond



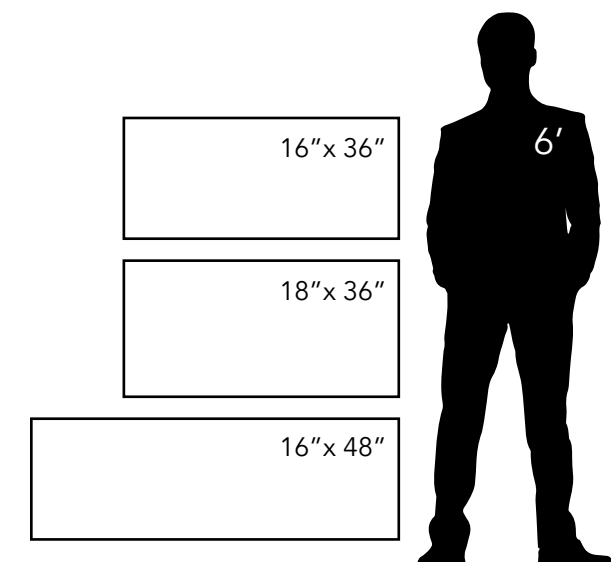
Vertical Stacked Bond



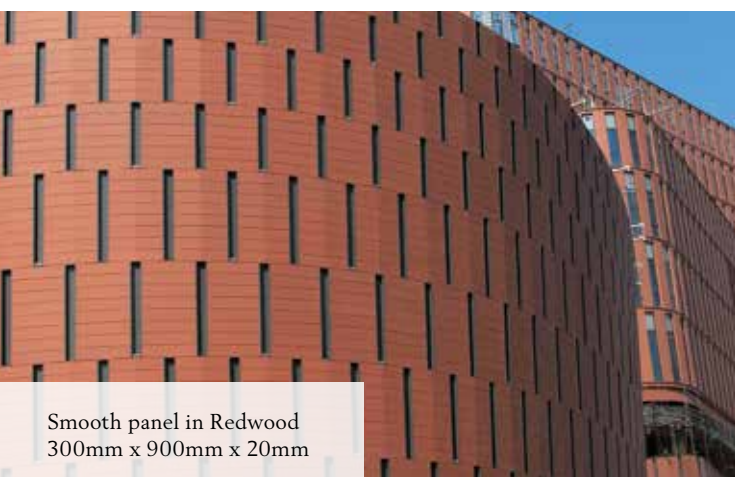
Horizontal Random Running Bond



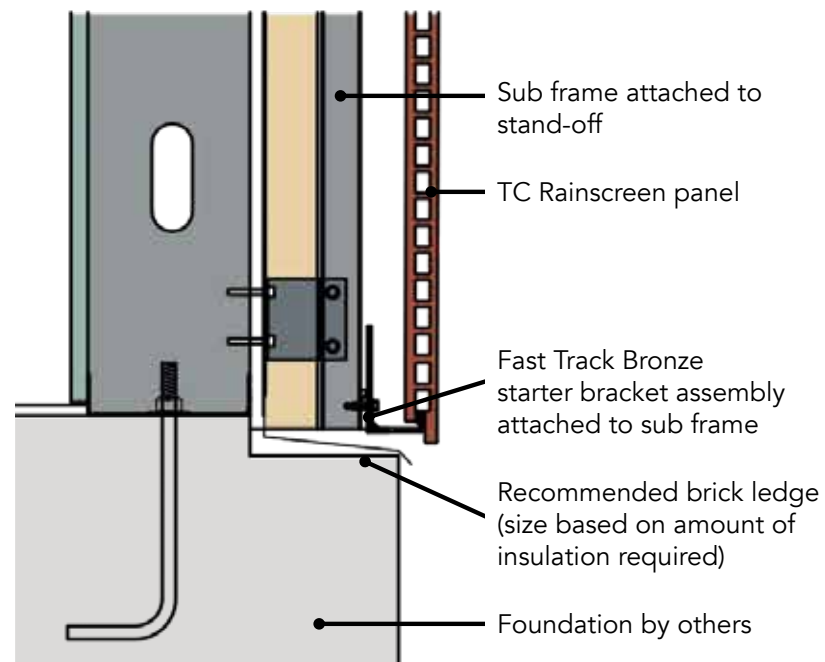
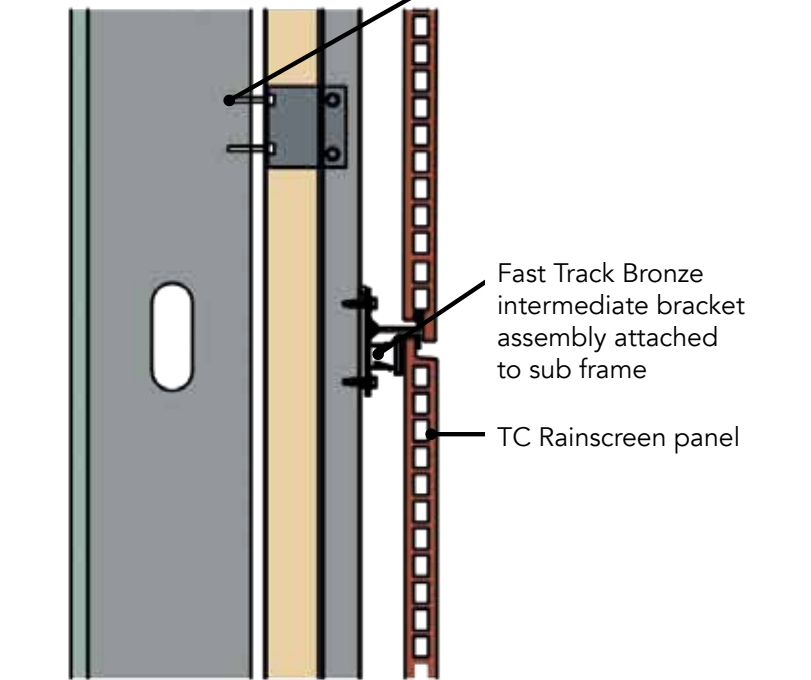
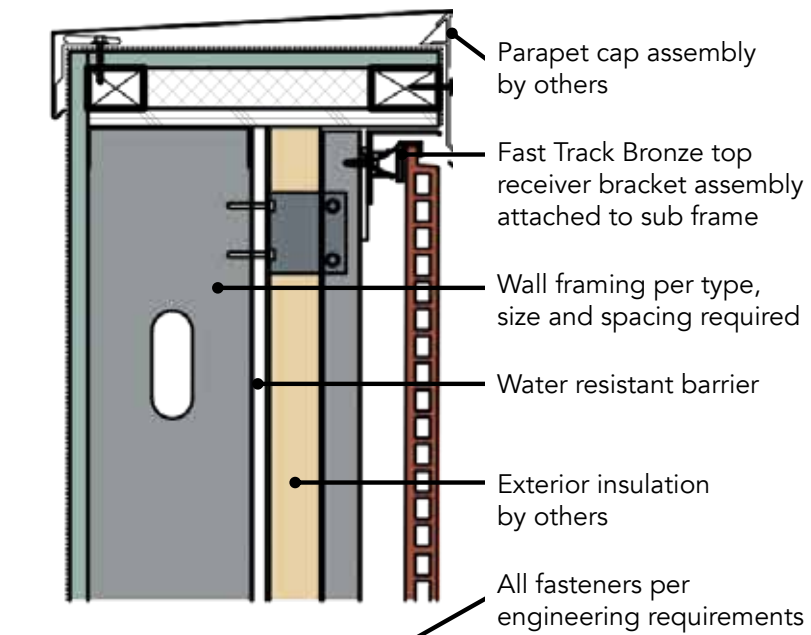
Horizontal Zipper Bond



Smooth panel in Colonial Maple



Smooth panel in Redwood
300mm x 900mm x 20mm



Characteristics

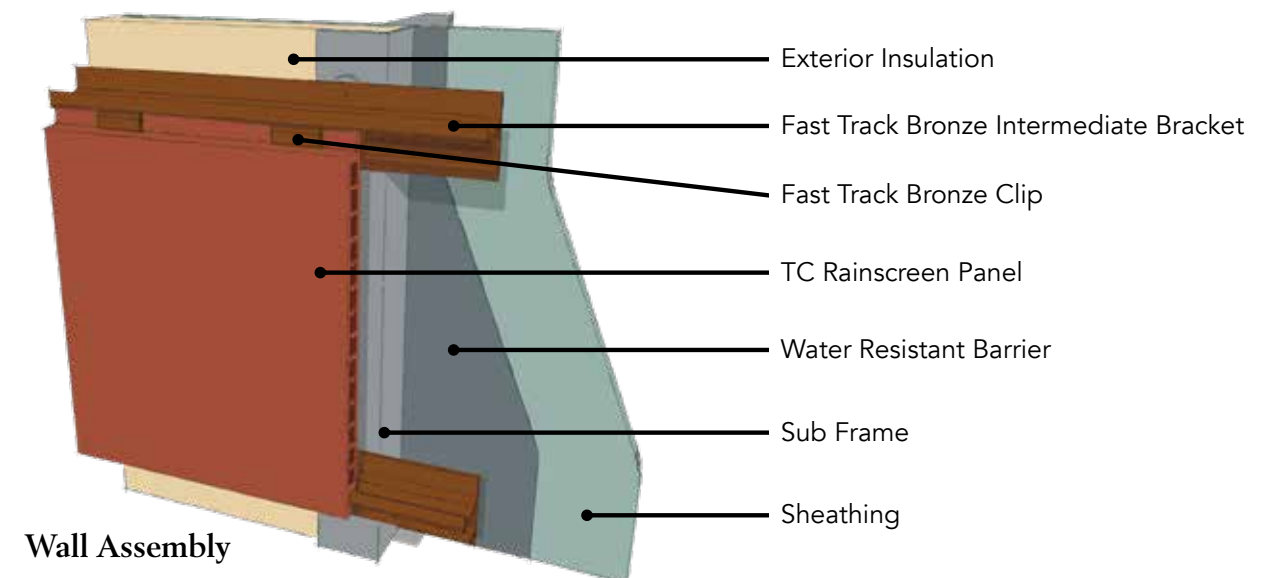
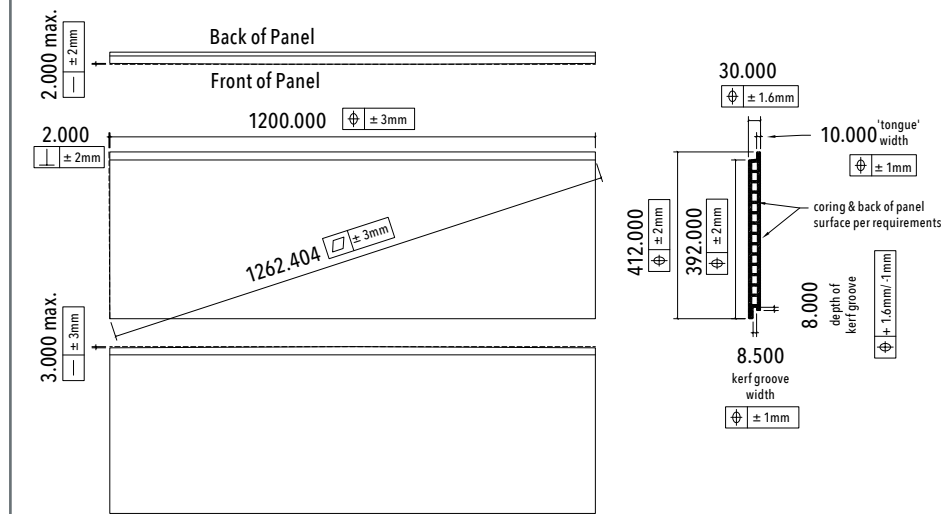
-  Absorption
ASTM C67-02C
2.6 - 4.7%
-  Moisture Expansion
ISO 10545-10
< 0.06 %
-  Modulus of Rupture
ASTM E880/C880M-15
1838 -1874 psi
-  Freeze & Thaw
ASTM C67
Tested to 50 Cycles & Passed
-  Reaction to Fire
ASTM C67
Non flammable
-  Breaking Strength
ASTM E880/C880-15
1180 - 1198 lbf
-  Efflorescence
ASTM C67-02C
No efflorescence
-  Chemical Resistance
ASTM C67-02C
Resistant to low concentrations of acid and alkalis



Smooth and Linear textures in Colonial Maple
410mm x 30mm, 35mm, 80mm

Panel Manufacturing Tolerances

30x400x1200mm



Wall Assembly



TC Sealed



Each TC Sealed panel production run is tailored to the specific color, shape, and texture characteristics unique to your project. These panels have kerfed top and bottom edges, as shown in the profile to the left. They have a minimum height of 6 inches, a maximum height of 24 inches, and maximum length of 5'-6". TC Sealed is attached to Fast Track Silver. This is a sealed facade system with backer rod and sealant installed at all joints. It is best suited for walls and soffits. We recommend polyurethane or silicone sealant for sealing all joints. Panel edges can be cut per shop drawings at the plant. See page 29 for corner details. Custom colors, glazing, and engobe glazing are available upon request.



Specifications

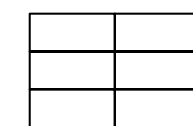
Standard Size	Thickness	Colors	Finishes	Weight	Coursing	Installation
16" x 36" 16" x 48" 18" x 36"	31.75mm panels cored according to production specifications	See pages 27-28 for options.	See page 26 for options.	~9 lbs per square foot	Continuous horizontal, flexible vertical joint, vertical orientation possible with special cut kerfs at panel ends	Panel rests on horizontal Fast Track Silver brackets & is secured with clips at the top lip



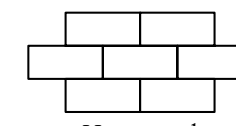
Smooth panels in Sandstone
450mm x 900mm x 31.75mm

Coursing Patterns

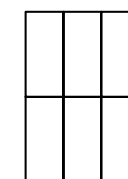
Suggested coursing patterns shown.



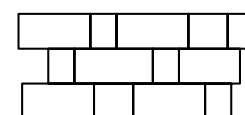
Horizontal Stacked Bond



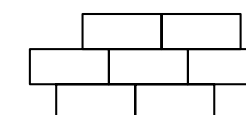
Horizontal Running Bond



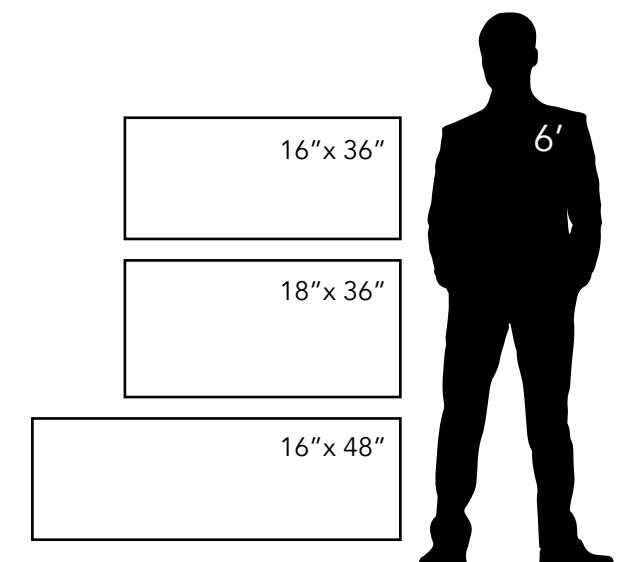
Vertical Stacked Bond

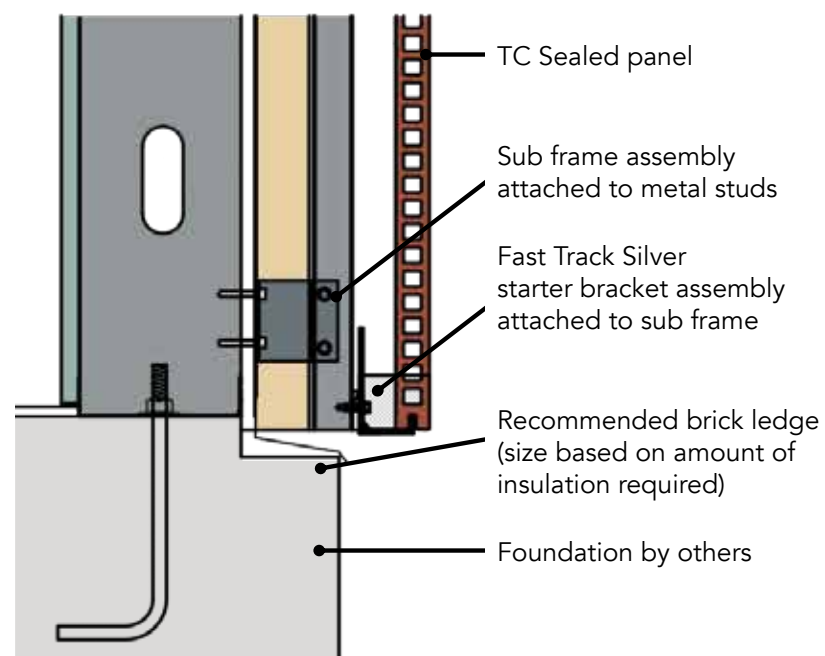
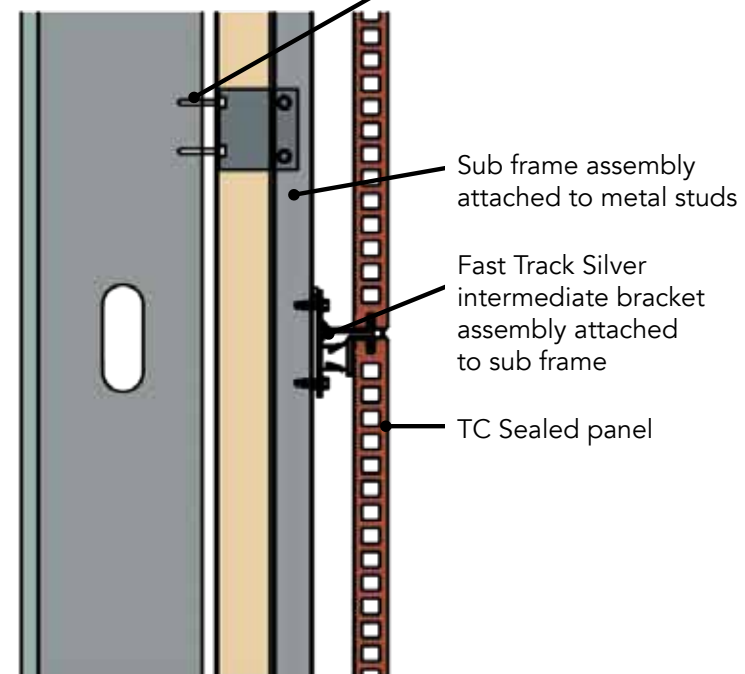
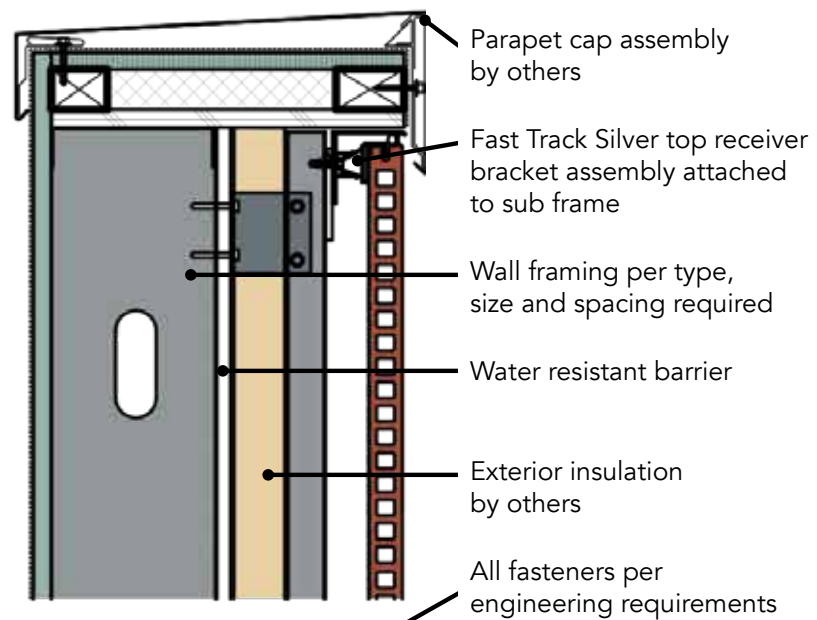


Horizontal Random Running Bond



Horizontal Zipper Bond





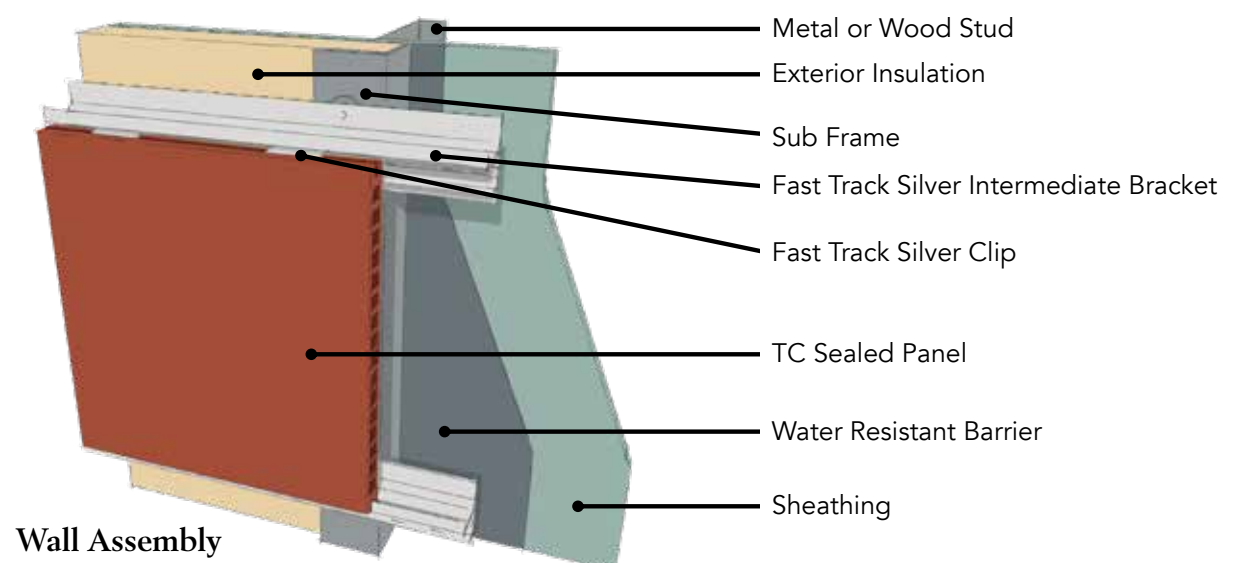
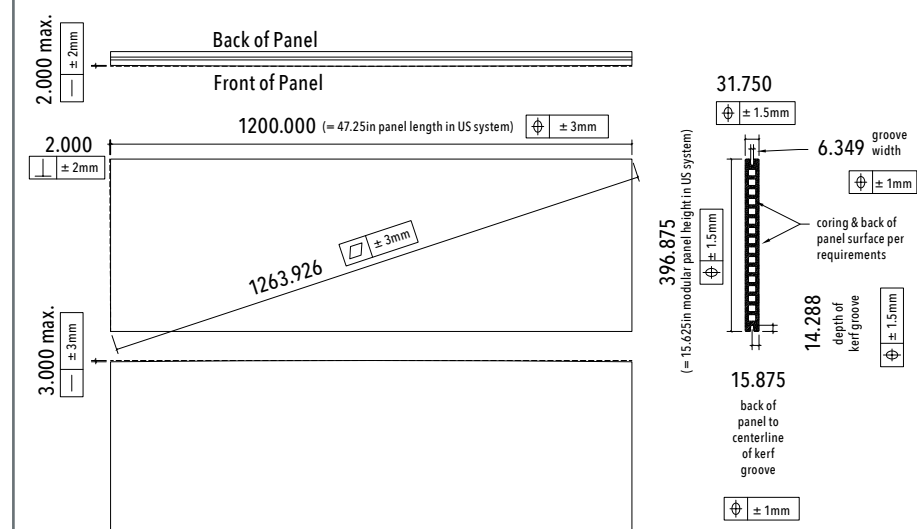
Characteristics

-  Absorption
ASTM C67-02C
4.7%
-  Moisture Expansion
ISO 10545-10
< 0.06%
-  Modulus of Rupture
ASTM E880/C880M-15
1838 - 1974 psi
-  Freeze & Thaw
ASTM C67
Tested to 50 Cycles & Passed
-  Reaction to Fire
ASTM C67
Non flammable
-  Breaking Strength
ASTM E880/C880-15
1180 - 1198 lbf
-  Efflorescence
ASTM C67-02C
No efflorescence
-  Chemical Resistance
ASTM C67-02C
Resistant to low concentrations of acid and alkalis



Panel Manufacturing Tolerances

32x400x1200mm

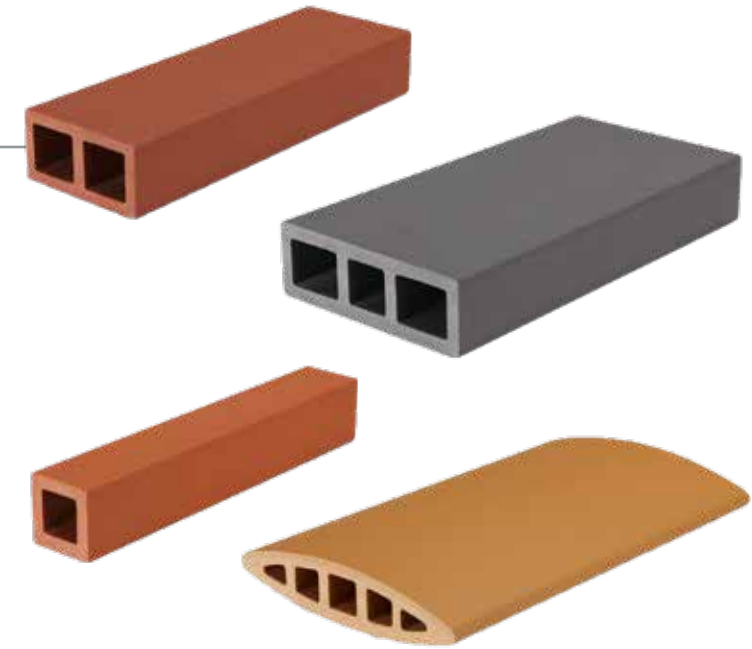


Wall Assembly



TC Sunshade

Each TC Sunshade baguette production run is tailored to the specific color, shape and texture characteristics unique to your project. We offer four standard profiles, shown to the left. They are fin, 2"x 6" rectangle, 2"x 4" rectangle, and square. TC Sunshade baguettes come in a standard length of 5 feet with shorter lengths formed or cut to length according to project needs. These units can be installed in a horizontal or vertical orientation. Units can have various attachment methods based on design, orientation, and location. Baguettes are used in various applications, including as awnings over windows, parking garage screens, or mechanical equipment screens. Custom colors, glazing and engobe glazing are available upon request.

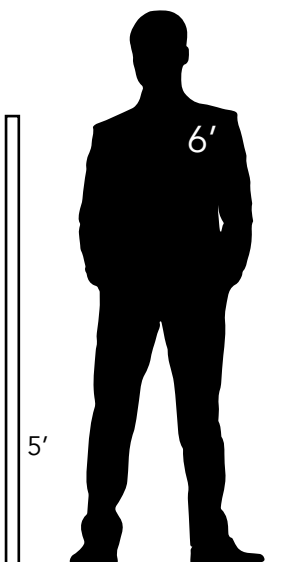


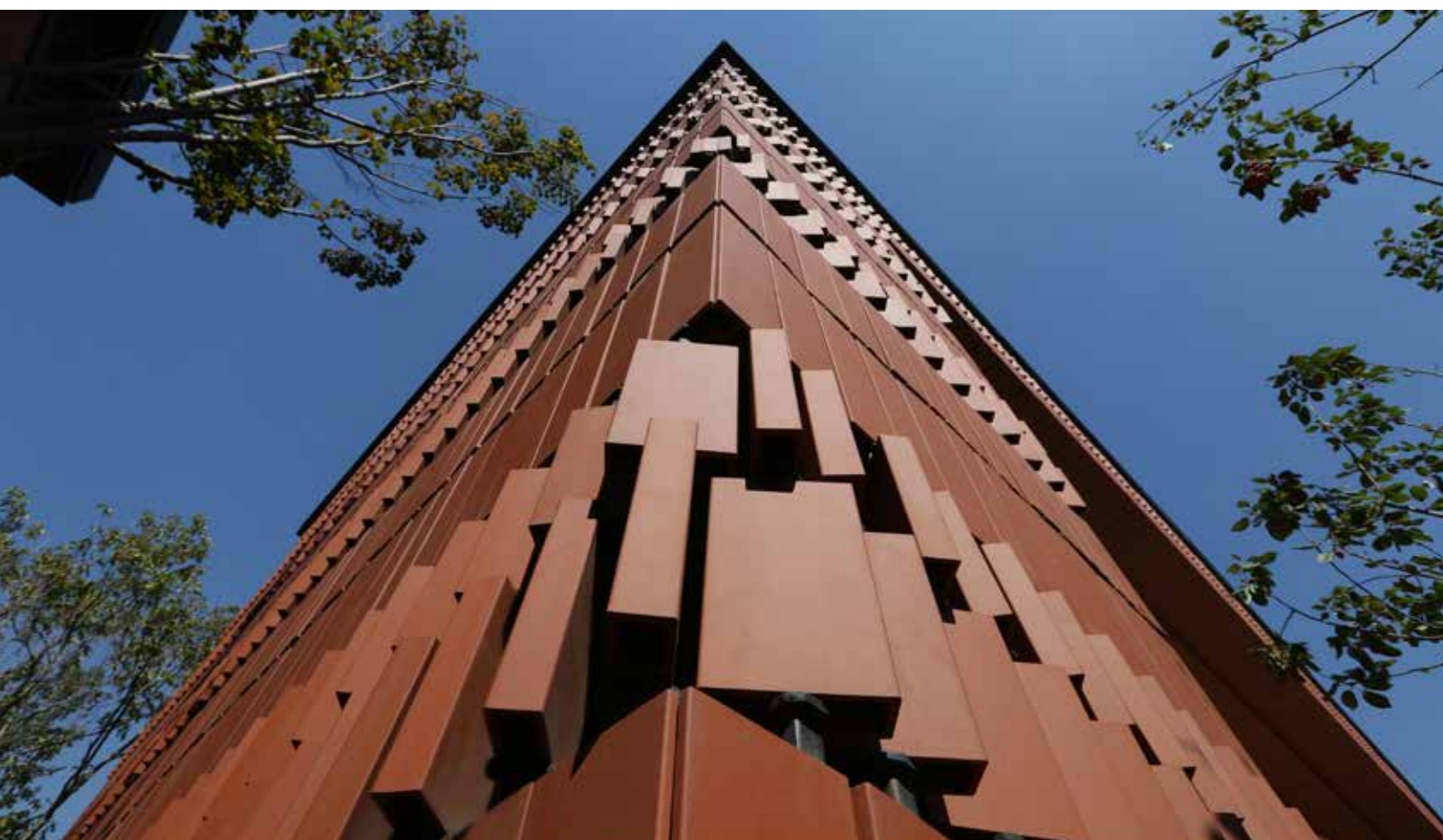
Specifications

Standard Shapes	Colors	Finishes	Weight	Coursing	Installation
2"x 7" fin	See pages 27-28 for options.	See page 26 for options.	5.8 lbs/linear ft	Can be installed horizontally, vertically, or in other orientations	Varies. Typically interior support tube attached to wall hanger or angle clips attached to a sub frame.
2"x 6" rectangle			5.33 lbs/linear ft		
2"x 4" rectangle			4.5 lbs/linear ft		
2"x 2" square			2.25 lbs/linear ft		



Smooth Sunshade in Copperstone
50mm x 150mm x 1200mm





Characteristics

- 

Absorption
ASTM C67-02C
3.3 - 5.6%
- 

Moisture Expansion
ISO 10545-10
< 0.06%
- 

Modulus of Rupture
ASTM E880/C880M-15
1305 psi
- 

Freeze & Thaw
ASTM C67
Tested to 50 Cycles & Passed
- 

Reaction to Fire
ASTM C67
Non flammable
- 

Breaking Strength
ASTM E880/C880-15
5230 lbf
- 

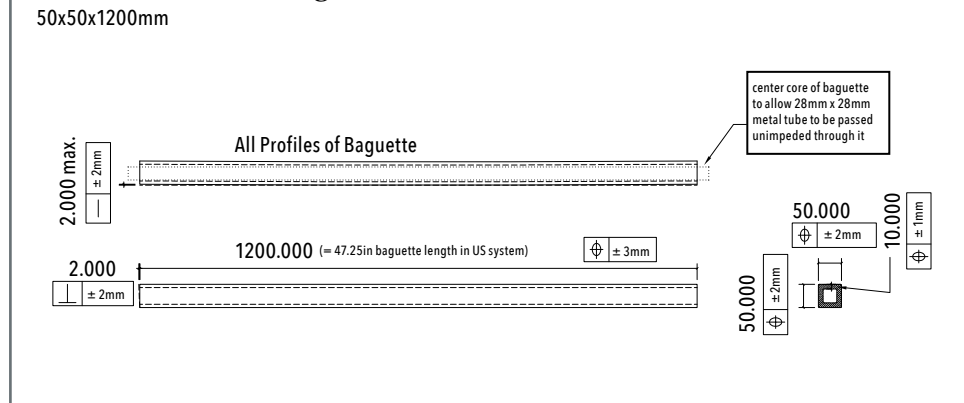
Efflorescence
ASTM C67-02C
No efflorescence
- 

Chemical Resistance
ASTM C67-02C
Resistant to low concentrations
of acid and alkalis

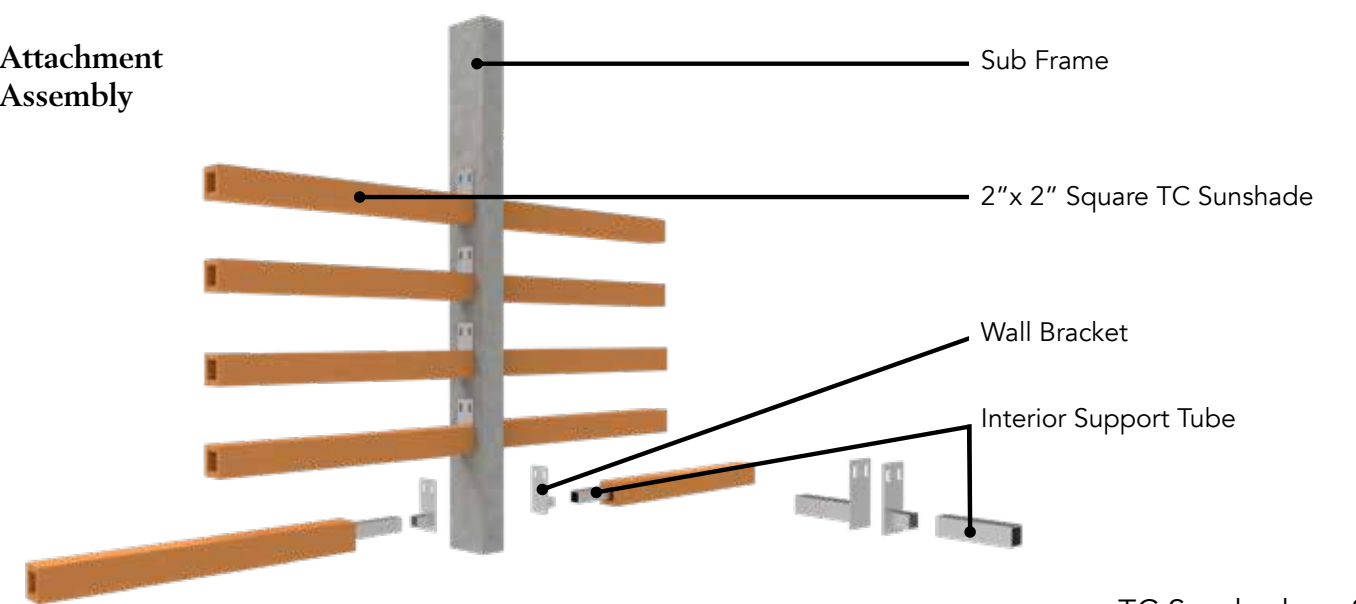


Smooth panels and sunshade in Copperstone
50mm x 150mm x 1200mm

Panel Manufacturing Tolerances



Attachment Assembly



Texture Options

Acme TC Cladding comes in five standard textures, with many subtypes. Custom textures are available.



Shapes

There is a variety of shapes to suit any look; perfect for a pop of pattern and bold designs. Shapes can align with facade elements or continue the eye along TC Sunshade lines. Custom shapes are available upon request. All panels are produced in metric sizes.



Color Options

Acme TC Cladding comes in a wide palette of standard colors. Custom colors, textures, glazing and engobing are available upon request.

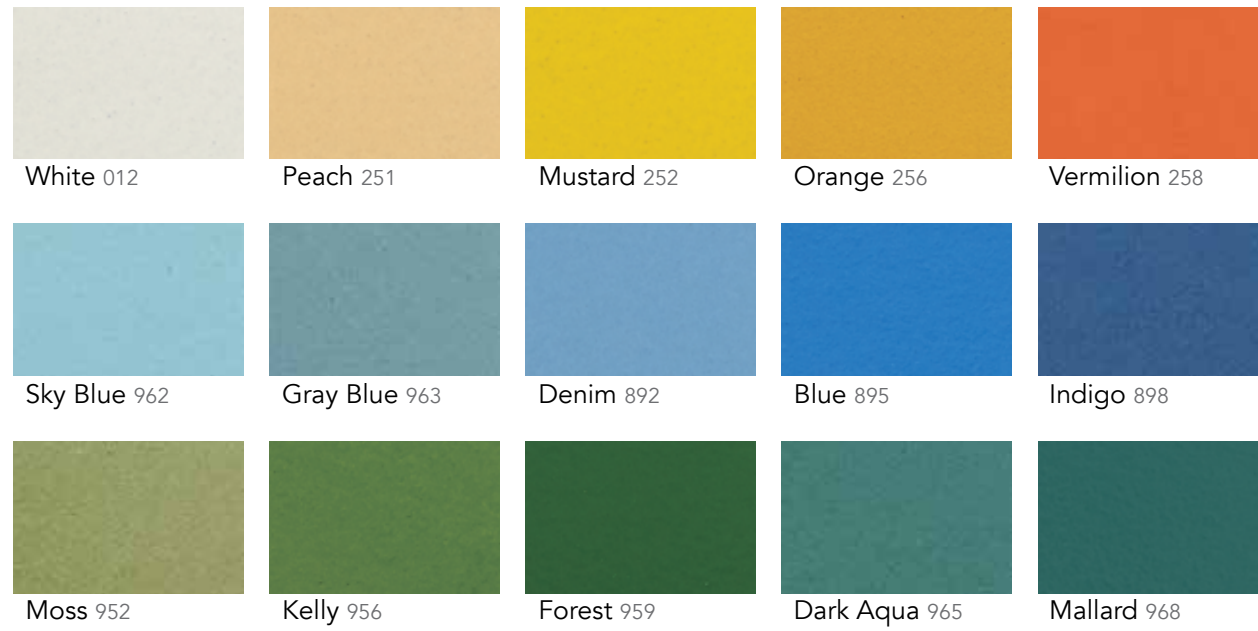


Glazed Panels

Printed colors are representative only.

Glaze & Engobe

Glazed Acme TC Cladding produces vivid colors with a glassy surface like most ceramics. All standard colors can be manufactured with a shiny engobe finish, while enhancing the character of the terracotta. Custom colors also available.



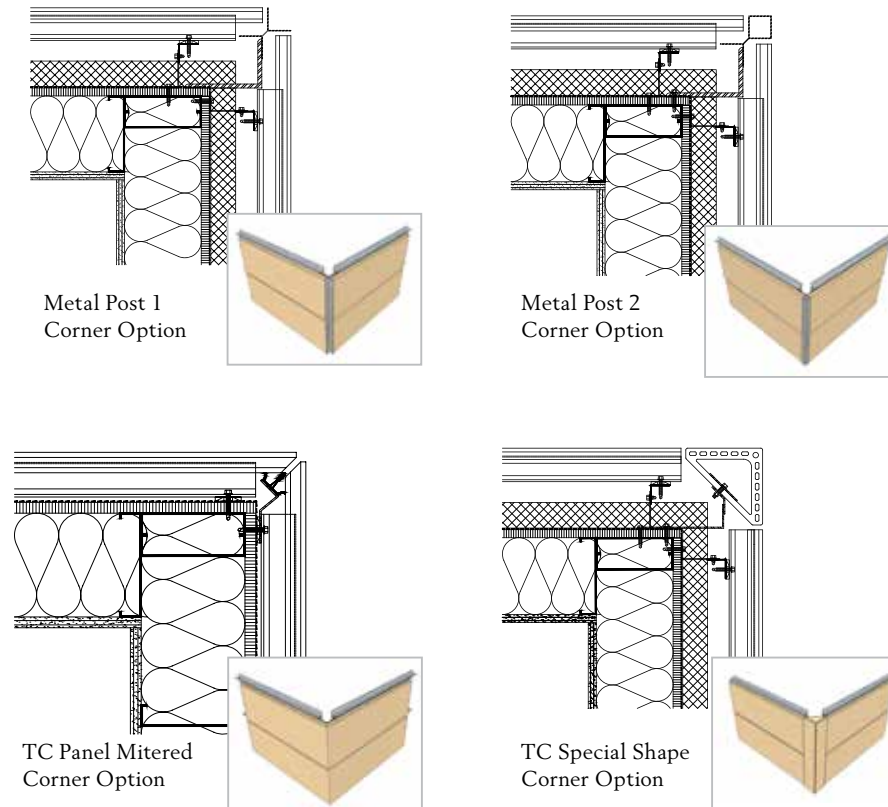
Digital Surfaces

Achieving amazing replication of natural materials, like marble, wood and stone, is possible through digital inkjet printing on smooth 12mm TC Cladding panels. This technology is proven and has been used on floor tile for decades. Custom printed surfaces are available.



Corners

Terracotta corner treatments should not be overlooked. Corners can be incorporated in any design style. These options are a separate attachment from Fast Track and are based on the panel type. We offer metal trim. Mitered corners are cut at the factory. Special shape terracotta corners blend seamlessly with panels and use a separate attachment system.



Special Shapes



Rain Blockers

Rain blockers are typically installed at vertical joints for TC Rainscreen and TC Rainscreen Light. The zinc aluminum metal rain blocker is typically installed at all the vertical joints between panels. The standard option is powder coated in black. However it can be powder coated in other options as specified. The EPDM rain blocker is installed at mitered outside corners. Rain blockers are optional for interior installations.

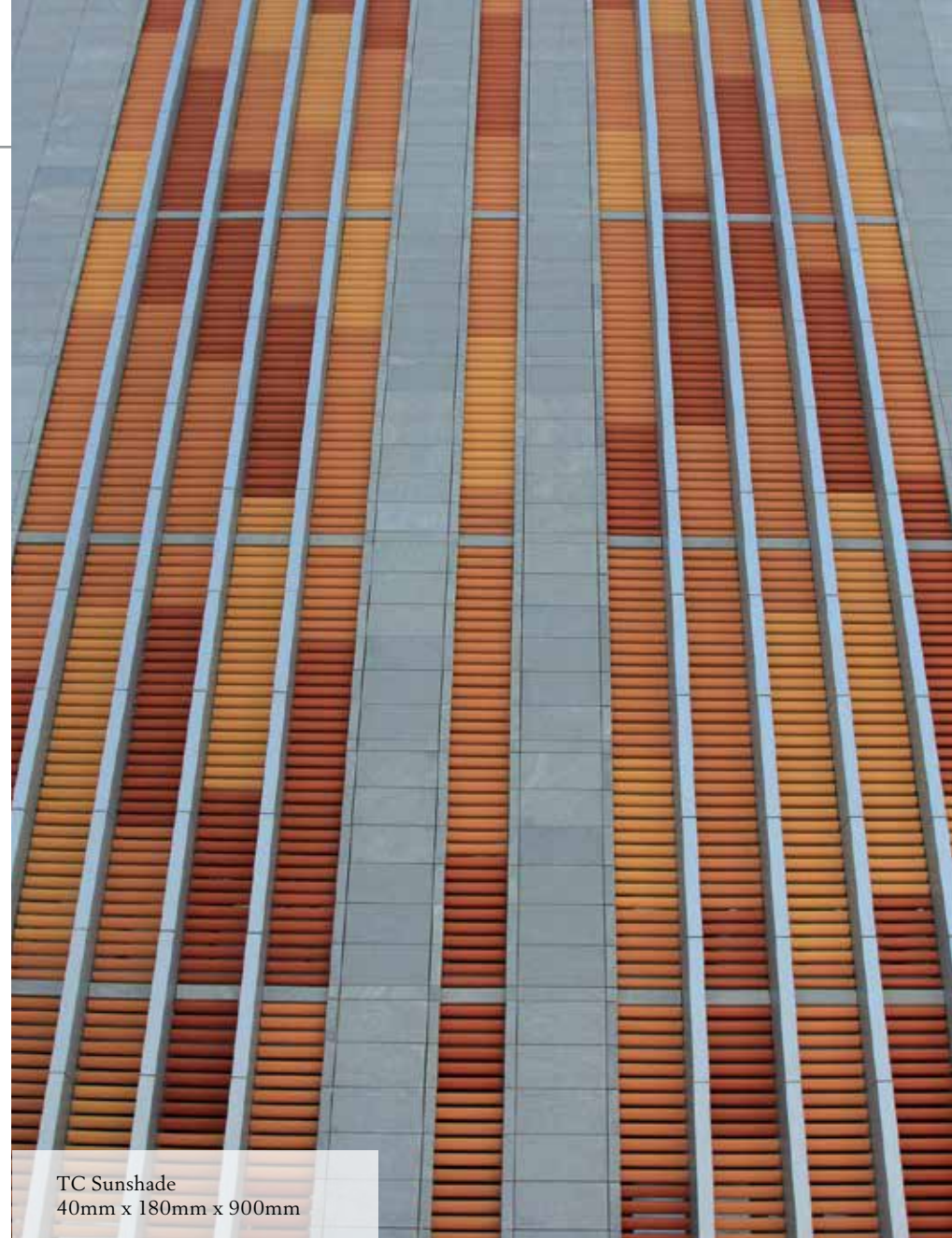


Customization

Combining color and texture are the basics of design, but when you consider the full scope of TC Cladding you realize it's true custom potential.

Right: The smooth shapes and colors of TC Sunshade create the illusion of color blocking a on the facade of this parking garage, while allowing ventilation and screening for automobiles.

Below: TC Tile and inkjet printed wood grain surfaces.



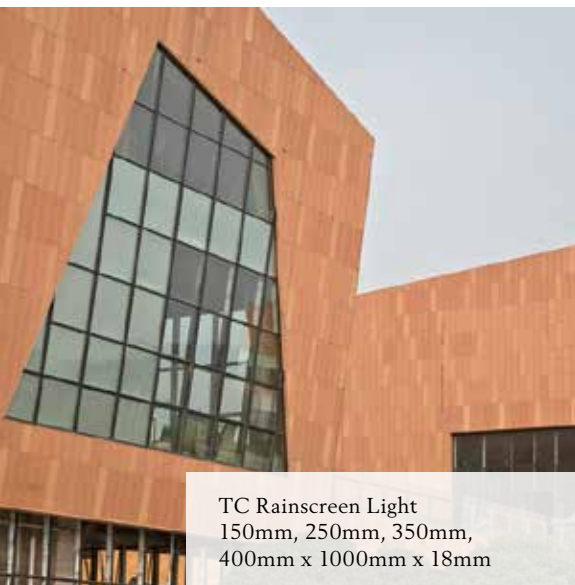
TC Sunshade
40mm x 180mm x 900mm



TC Sunshade



Etched TC Rainscreen Light panel in Linen
450mm x 1000mm x 18mm



TC Rainscreen Light
150mm, 250mm, 350mm,
400mm x 1000mm x 18mm

Left: Combining colors can make an eye catching detail.

Right: Etching into solid panels can be done in any design.



Top: Combine sunshade and panels for a dramatic look.

Above: Subtle flower etched into white panels.

Left: Many other TC Sunshade profiles available upon request.



P.O. Box 425, Fort Worth, TX 76101
phone 1.800.932.2263 • fax 1.817.332.1406
email tccladding@brick.com
acmetccladding.com • brick.com

