

ALL-BOND UNIVERSAL™

The First TRULY Universal Dental Adhesive



1-800-BIS-DENT
www.bisco.com

Rx Only

Too Good To Be True?

ALL-BOND UNIVERSAL...absolutely genius.



1-800-BIS-DENT

www.bisco.com



ALL-BOND UNIVERSAL Shear Bond Strength to Multiple Substrates (MPa)

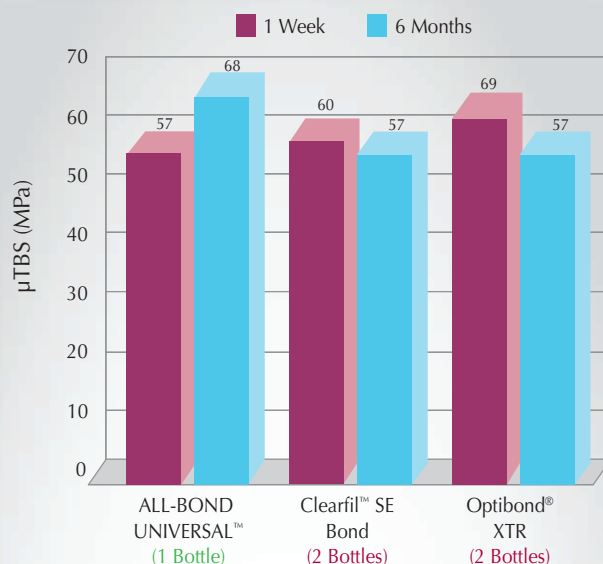
	Light-Cured
Dentin	
Total-etch	33
Self-etch	31
Cut Enamel	
Total-etch	36
Self-etch	29
Uncut Enamel	
Total-etch	31
Self-etch	19
Zirconia	26.9
Alumina	33.7
Titanium	38.0
Base	37.8
Noble	17.8
High Noble	21.7
Lithium Disilicate (IPS e.max)	32.8
Glass Ceramic	21.5
Composite	48.8

Shear bond strength generated using the Ultratent method.

Data on file. BISCO, Inc.

- ALL-BOND UNIVERSAL is the perfect chemical formulation for both self-etch and total-etch adhesion using only one bottle. ALL-BOND UNIVERSAL is used for:
 - ALL direct and indirect restorations
 - Resin bonding to ALL direct substrates
 - Protective varnish for glass-ionomer-based fillings
- ALL-BOND UNIVERSAL contains MDP monomers that enhance durability of adhesion, and allow bonding to indirect restorations (zirconia, alumina and metal).
- ALL-BOND UNIVERSAL's mild acidity ($\text{pH} > 3$) allows universal compatibility with dual-cured and self-cured composite core build-ups and resin cements.
- ALL-BOND UNIVERSAL's hydrophobic formula (resin friendly) results in improved durability of the bond by optimizing the seal.
- ALL-BOND UNIVERSAL readily flows into etched surfaces and offers both chemical and mechanical sealing following light curing.
- Clinical evaluation confirms the ease of use as a benefit leading to virtually no post-operative sensitivity.

Durability = Confidence (Microtensile Bond Strength on Dentin with Aging)

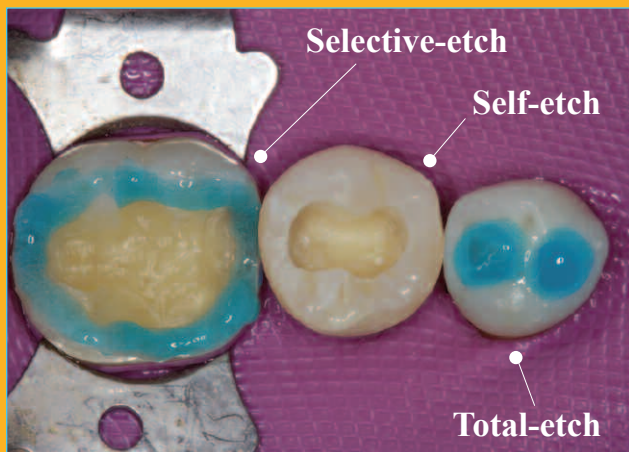


ALL-BOND UNIVERSAL utilizes MDP monomers in its unique formulation in one bottle that results in an enhanced durability of the bond compared to two bottle systems.

DR. MARCOS VARGAS (University of Iowa)

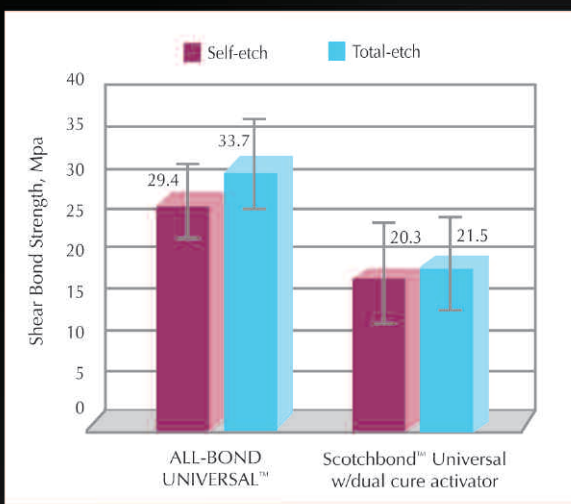
Research is ongoing (continued water storage long term) and not all tested materials are reported above. Data available upon request.

BISCO Takes Bonding Another Step Further

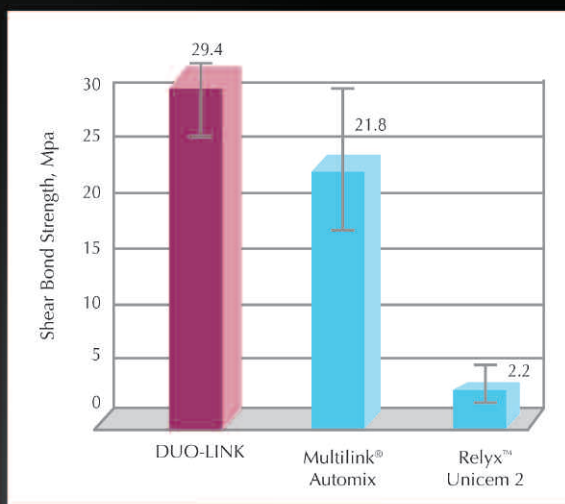


- 1** ALL-BOND UNIVERSAL offers the flexibility for total-, self- or selective-etch procedures.
- 2** ALL-BOND UNIVERSAL is compatible with all light-cured, self-cured, and dual-cured resin composite and cement materials for all direct and indirect procedures.
- 3** Other single bottle adhesives may need more than 1 bottle for indirect restorations, but with ALL-BOND UNIVERSAL, **NO** activator is required!

Dentin Bond Strength Comparison: Indirect Restorations



ALL-BOND UNIVERSAL was cemented with DUO-LINK™, and ScotchBond Universal was cemented with RelyX™ ARC. Cements were self-cured.



DUO-LINK was used with ALL-BOND UNIVERSAL, and Multilink Automix was used with Multilink Primer A and B. Relyx Unicem 2 is a self-adhesive resin cement. Cements were self-cured. DENTIN WAS NOT ETCHED.

Direct Placement Technique*



1 - Technique A

SELF-ETCHING TECHNIQUE:

Prepare cavity. Wash thoroughly with water spray. Remove excess water (do not desiccate).



1 - Technique B

TOTAL-ETCHING TECHNIQUE:

Prepare cavity. Wash thoroughly with water spray, apply phosphoric acid etchant and rinse thoroughly. Preparation should be visibly moist.



1 - Technique C

SELECTIVE ENAMEL ETCHING

TECHNIQUE: Prepare cavity. Wash thoroughly with water spray, apply phosphoric acid etchant and rinse thoroughly. Preparation should be visibly moist.



2 Apply ALL-BOND UNIVERSAL according to instructions.



3 Evaporate excess solvent by air-drying thoroughly; light cure. The surface should have a uniform glossy appearance.



4 Continue with placement of the restorative material.

Indirect Placement Technique*



1 Maxillary right posterior teeth prepared for full-contoured zirconia restorations. Two coats of ALL-BOND UNIVERSAL applied and light-cured.



2 Application of ALL-BOND UNIVERSAL (or Z-PRIME PLUS) to inside surface of crowns.



3 Restoration completed after cementation with DUO-LINK.

Dentistry courtesy of Dr. Ross Nash

NOTE: Due to the low film thickness, ALL-BOND UNIVERSAL is easily spread thin and will NOT affect cementation procedures, even with tight fitting restorations.

* Refer to complete instructions for use for detailed technique and instructions.

ALL-BOND UNIVERSAL'S single bottle system offers the compatibility and speed for everyday effective performance.

	ALL-BOND UNIVERSAL™ BISCO	Scotchbond™ Universal 3M ESPE	Optibond® XTR Kerr	Prime & Bond® NT Dentsply Caulk	Clearfil™ SE Bond/Protect Kuraray	Brush & Bond® Parkell
Total-etch & Self-etch	✓	✓	✗ (self-etch only)	✗ (total-etch only)	✗ (self-etch only)	✓
Direct restorations	✓	✓	✓	✓	✓	✓
Indirect restorations	✓	✓*	✓	✓ [▲]	✗	✗ [•]
Compatible with ALL self-, dual- & light-cure materials	✓	✗*	✓	✗ [▲]	✓	✓
Single bottle	✓	✓*	✗**	✓	✗ [■]	✓
No activator required	✓	✗*	✓	✗ [▲]	✓	✗ [•]
Price per application	\$	\$\$ [†]	\$\$	\$\$\$ [†]	\$\$	\$\$

Data compiled from respective manufacturer's instructions for use.

Trademarks are property of their respective owners.

* Requires Scotchbond Universal DCA (dual-cure activator).

** Optibond XTR is a 2 bottle system requiring a primer and adhesive.

▲ Dual cure activator required for self-cured materials. Sold separately.

■ Clearfil SE Bond/Protect is a 2 bottle system requiring a primer and adhesive.

• Brush & Bond is indicated for use with composites and ceramics only.

• Brush & Bond requires an activator brush.

† Price per application includes the cost of the activator.

ORDERING INFORMATION

Standard kit B-72020K

1 Bottle ALL-BOND UNIVERSAL (6ml), 1 Syringe SELECT HV™ ETCH w/ BAC (5g),

Accessories, Instructions/MSDS

Bottle Package B-7202P

1 Bottle ALL-BOND UNIVERSAL (6ml), Instructions/MSDS

TO ORDER CALL:

1-800-BIS-DENT (800-247-3368)

www.bisco.com

