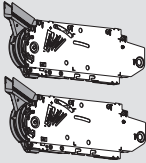


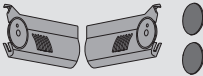
Lift mechanism set



- Lift mechanism (qty 2)
- #7 x 35 mm (1-3/8") wood screw (qty 8)

Power factor	Part no.
85 — 230 (1 lift mechanism req.)	20F2200.N5
231 — 470	20F2200.N5
471 — 880	20F2500.N5
780 — 1440	20F2800.N5
1401 — 2300 (3 lift mechanisms req.)	20F2800.N5

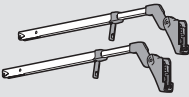
Cover set



- Right and left cover plate
- Non-handed cover cap (qty 2)

Cover set	Part no.
Cover set	20F8000.NA

Telescopic arm set



- Telescopic arm (qty 2)

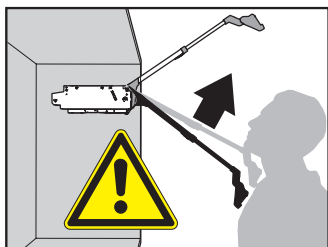
Cabinet heights	Part no.
479 (18-7/8") — 558 (22")	20F3200.01
558 (22") — 686 (27")	20F3500.01
686 (27") — 889 (35")	20F3800.01
889 (35") — 1067 (42")	20F3900.01

Narrow aluminum door hardware set

- 72T550A.TL — CLIP top free swing narrow alum. top door hinge (qty 2)
- 78Z550AT — CLIP top narrow aluminum bottom door hinge (qty 2)
- 175H3100 — Top door mounting plate (qty 2)
- 175H5A00 — Bottom door mounting plate (qty 2)
- 175H5B00 — Telescopic arm mounting plate (qty 2)
- 669.110 — Aluminum screw for the bottom door mounting plate, bottom hinge, top hinge and telescopic arm mounting plate (qty 18)

NOTE: Three hinges and mounting plates are required for cabinet widths over 1219 (48") or combined door weight of 26.5 lb

Narrow aluminum door hardware set	Part no.
Narrow aluminum door hardware set	78Z550ATA6
Installation screw for top mounting plate	606N or 606P

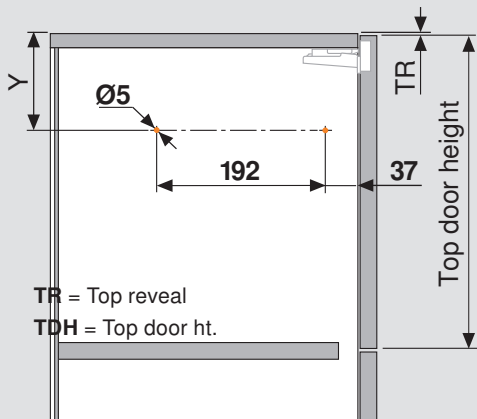


WARNING

Risk of injury from spring-loaded arm

- Do not push arm assembly down or leave in the down position
- Remove mechanism before installing or removing cabinet

1 Locating pin locations



Top door height (TDH)	Y
231 to 271	$TDH \times .6 - 28 + TR$
272 to 531	$TDH \times .6 - 57 + TR$

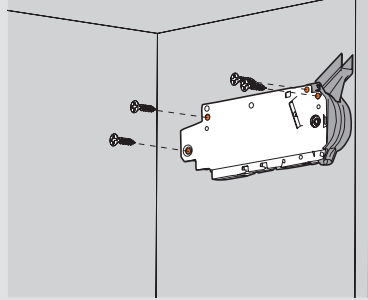
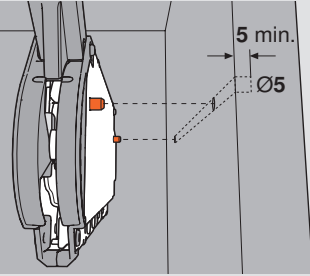
Universal individual template is available for pre-boring 5 mm locating pins

Part no.

65.1051.02

2 Attach the lift mechanism

Align the lift mechanism in the cabinet using the 5 mm locator pins and attach the mechanism with the four wood screws provided.



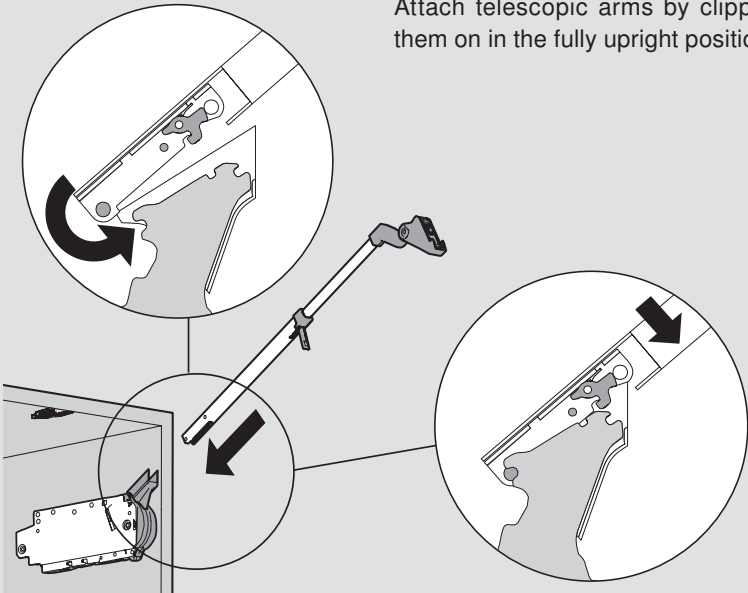
#7 x 35 mm (1-3/8") wood screws (qty 4)

3 Attach the telescopic arms

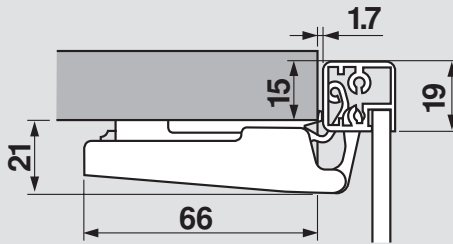


WARNING: Risk of injury from spring loaded arm.

Attach telescopic arms by clipping them on in the fully upright position.



4 Top door hinge planning



Part no.

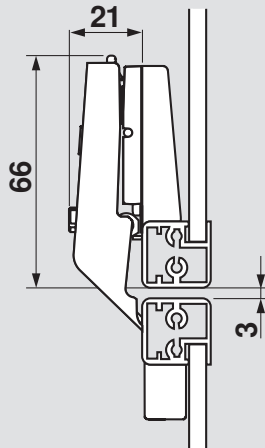
Aluminum door hinge

72T550A

In-line mounting plate

175H3100

5 Bottom door hinge planning



Part no.

Aluminum door bottom hinge

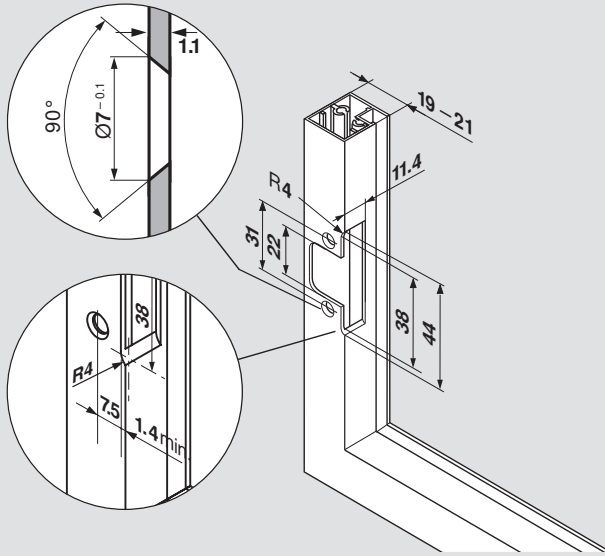
78Z550AT

Bottom door mounting plate

175H5A00

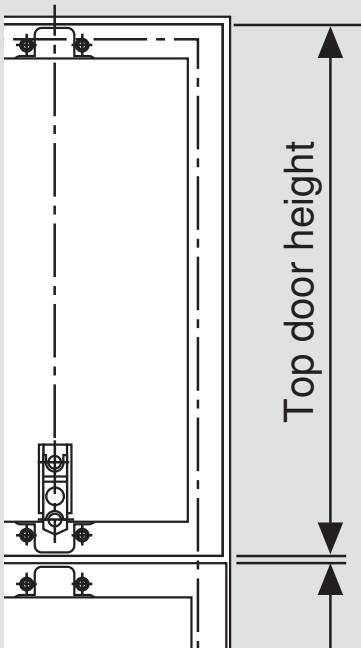
6

Frame preparation



7

Bottom door planning



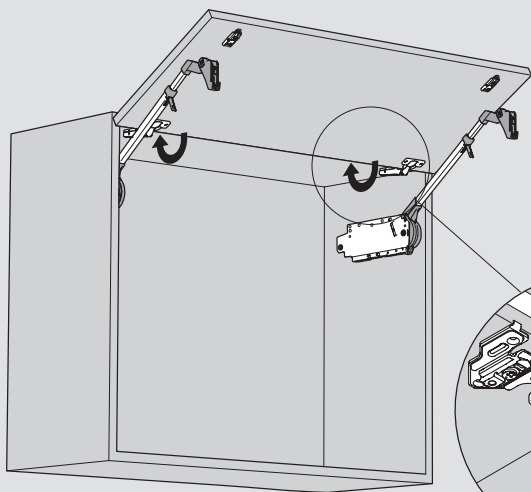
Top door height (TDH)	X
231 to 271	TDH x .5 + 70
272 to 531	TDH x .5 + 47

NOTE: 3 hinges are required for cabinet width over 1219 mm (48") or 26.5 lb. combined door weight

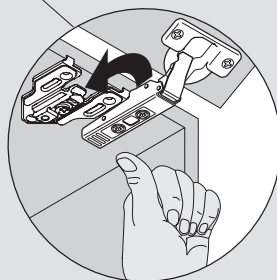
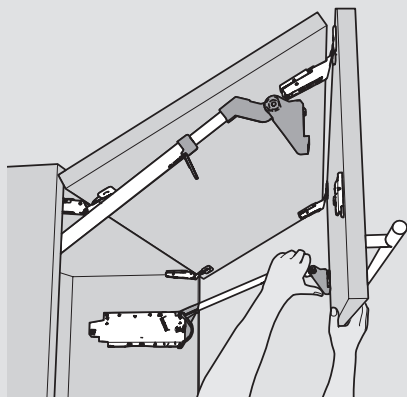
Part no.

Telescopic arm mounting plate

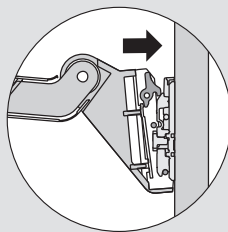
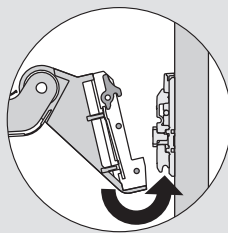
175H5B00

8 Attach the top door to the cabinet

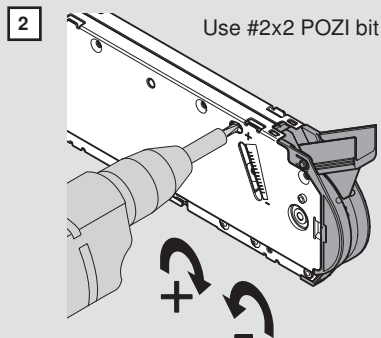
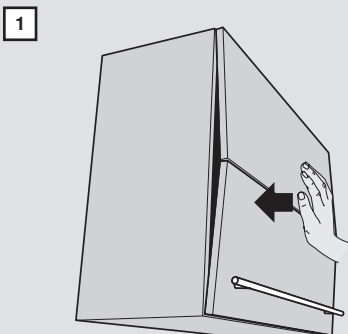
Determine the locations of mounting plates and hinges and attach the hardware to cabinet doors. Attach top door to the cabinet.

**9** Attach the bottom door

Attach bottom door to the top door and attach the telescopic arms.



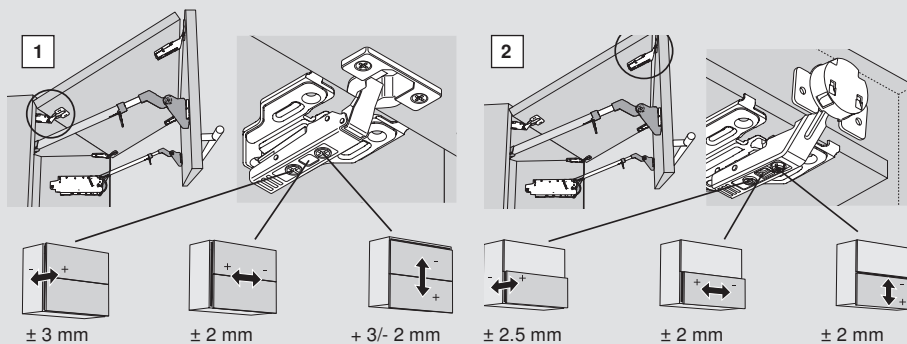
10 Finalize the tension adjustments



Close and flush doors to cabinet. Open and close door to test closing force. Open door and adjust tension screws on both lift mechanisms with a power drill. Test door again and repeat until desired function is achieved.

Tension adjustment should be the same on both lift mechanisms.

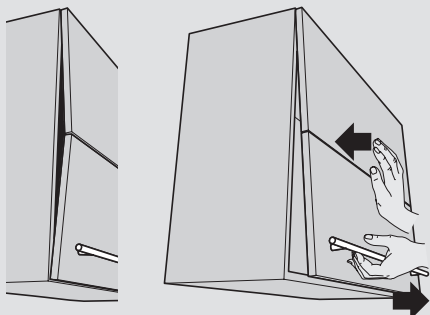
11 Finalizing the door adjustments



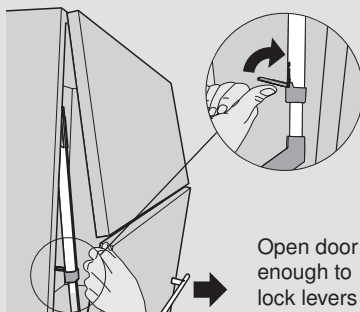
1. Adjust each top door hinge and mounting plate to properly align the top door to the cabinet.

2. Adjust each bottom door hinge and mounting plate to properly align doors to the cabinet and to the top door.

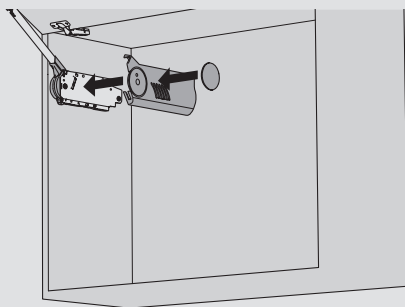
NOTE: Although not illustrated here, telescopic arm mounting plates can also be adjusted horizontally ± 2 mm if needed.

12 Adjust and lock telescopic arms**1**

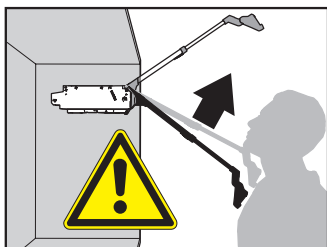
1. Close and flush doors to cabinet. While pressing on the bottom of the top door, pull the bottom door open one inch.

2

2. Slightly open door and lock the telescopic arms into position using the levers as shown.

13 Attach cover caps

Attach the left and right cover plates to each lift mechanism then attach the symmetrical cover caps.

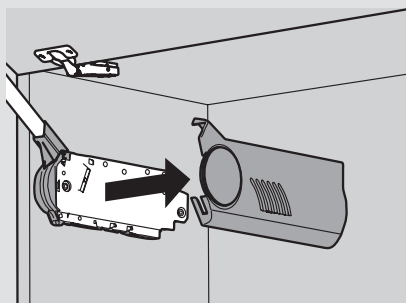


WARNING

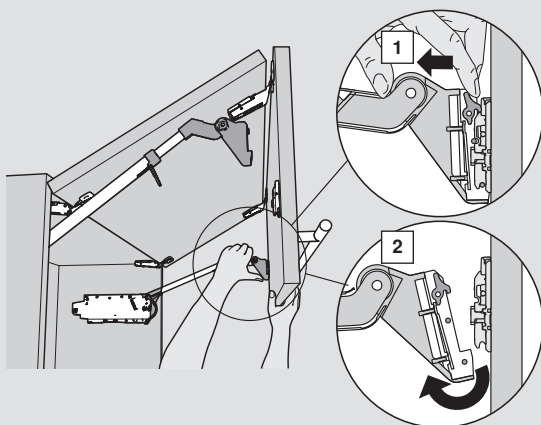
Risk of injury from spring-loaded arm

- Do not push arm assembly down or leave in the down position
- Remove mechanism before installing or removing cabinet

1 Removing the covers

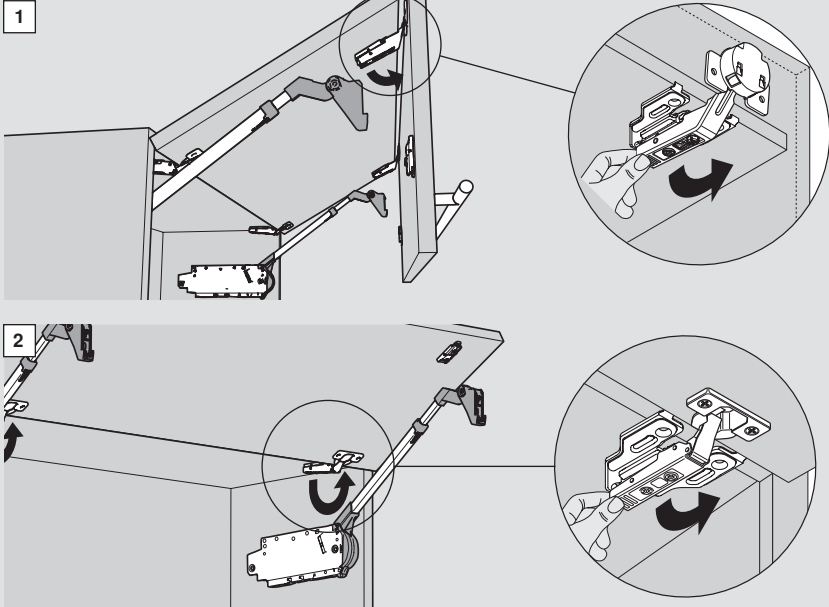


2 Removing the door



Release both arms and gently rest the top door on the loose arms. The tension will hold the doors up for the next step.

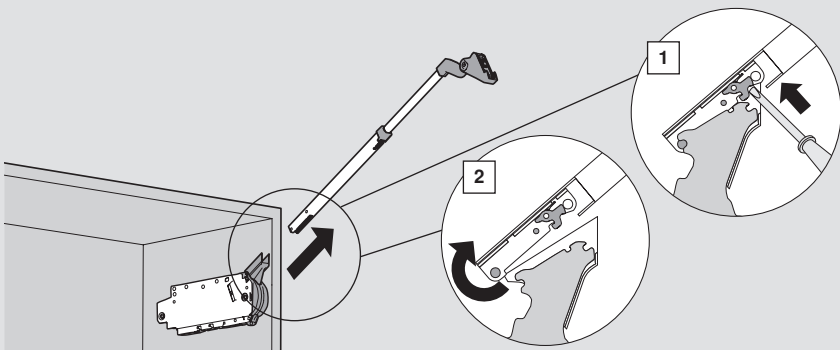
3 Removing the doors



1. Hold the bottom door while unclipping the bottom hinge.

2. Hold the top door while detaching the top hinges. Simply unclip them if using the CLIP top hinges or unscrew them if using COMPACT.

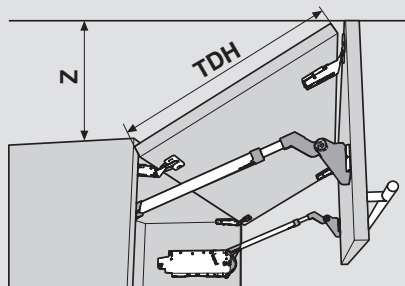
4 Removing the telescopic arms



Using a screwdriver, depress the release tabs to remove telescopic arms.

If transporting the cabinet to the jobsite, stop here. Lift mechanisms can stay inside the cabinet for easy transport.

Door clearance above cabinet



$$Z = TDH \times .44 + 38$$

Inch		mm
1/32	.031	1
1/16	.063	1.5
3/32	.094	2
1/8	.125	3
5/32	.156	4
3/16	.188	5
7/32	.219	5.5
1/4	.25	6
9/32	.281	7
5/16	.313	8
11/32	.344	9
3/8	.375	9.5
13/32	.406	10
7/16	.438	11
15/32	.469	12
1/2	.5	13
17/32	.531	13.5
9/16	.563	14
19/32	.594	15
5/8	.625	16
21/32	.656	17
11/16	.688	17.5
23/32	.719	18
3/4	.75	19
25/32	.781	20
13/16	.813	20.5
27/32	.844	21
7/8	.875	22
29/32	.906	23
15/16	.938	24
31/32	.969	24.5
1	1	25.4

Blum, Inc.
 800-438-6788
 sales.us@blum.com
 blum.com