

NetSim[®]10
USER MANUAL

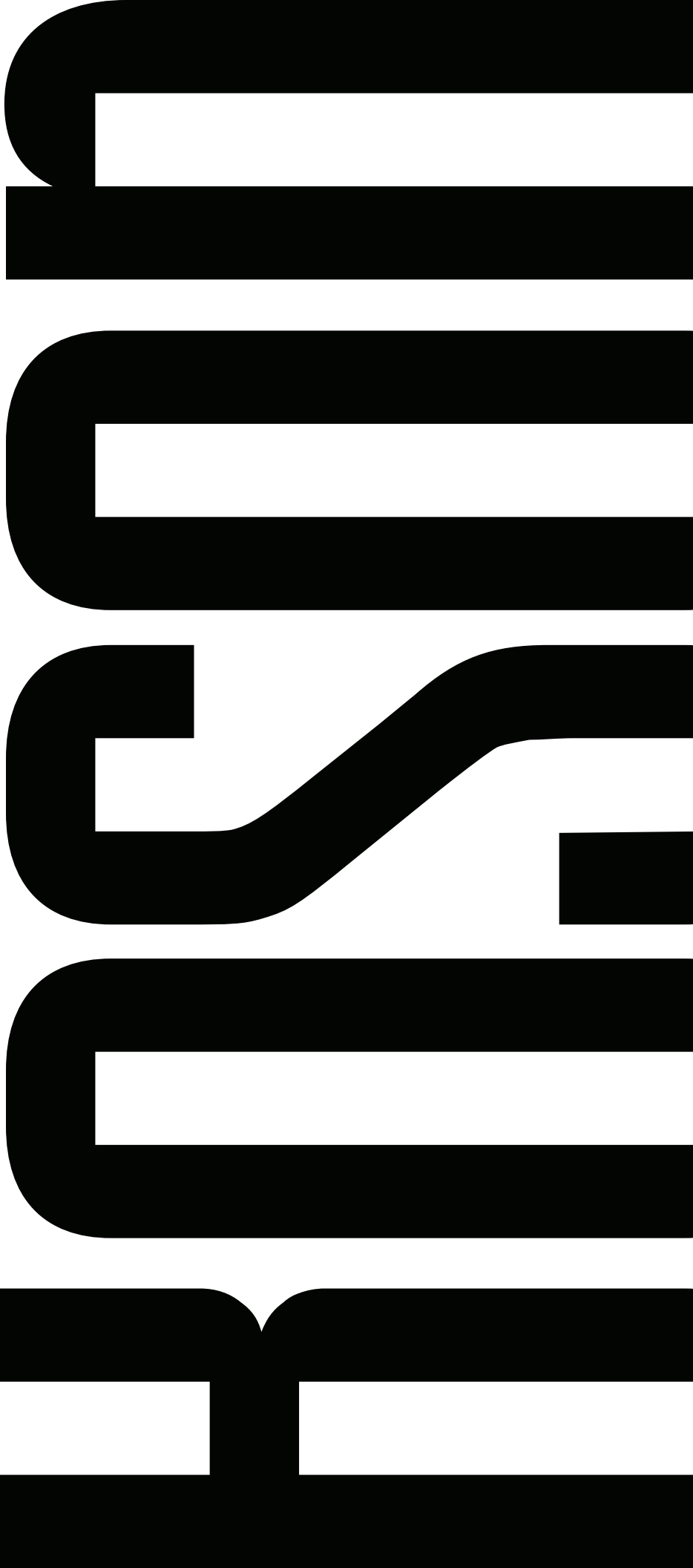


Table of Contents

Boson NetSim Overview	1
Using NetSim to Prepare for Your Certification	3
Contact Information	4
NetSim Technical Support	4
License Solutions	4
Getting Started	5
System Requirements	5
Product Activation	5
Demo Version	6
Full Version	6
Guided Tips	8
Home Component Tips	8
Lab Component Tips	9
Designer Component Tips	10
Compiler Component Tips	11
Begin a Lab	11
Menus	12
Menu Bar	12
File Menu	12
New	12
Open	12
Save	12
Save As	12
Save All	12
Package Lab	12
Import	12
Export	12
Recent Saved Topologies	13
Recent Saved Labs	13
Recent Loaded Labs	13
Exit	13
Edit Menu	13
Proxy Settings	13
Preferences	13
View Menu	13
Current Mode	13
Current View	14
Toolbar	14
Status Bar	14
Auto Collapse Tree	14
Auto Hide Menu	14
Lab Menu	14
Load Lab	14
Grade Lab	14
Launch External Lab Viewer	14
Launch External NetMap Viewer	14
Paste Router Configuration	14
Open All Devices	15

Designer Menu	15
New Topology	15
Clear Topology	15
Add	15
Compiler Menu	15
New	15
Edit	15
Delete	15
Wizard	15
Help Menu	15
Guided Tips	16
Users Manual	16
Support	16
Activate Keys	16
Check for Updates	16
About Boson NetSim	16
Release Notes	16
Quick-Launch Toolbar	16
New Topology	16
Open File	16
Save	16
Save All	16
Grade Lab	16
Console to Device	17
Zoom In	17
Zoom Out	17
Add New Device	17
Add New Connection	17
Delete Selected	17
Clear Topology	17
Start Simulator	17
Stop Simulator	17
Launch Lab Compiler Wizard	17
Move Selection Up	17
Move Selection Down	17
Check for Updates	17
Edit Application Preferences	18
Open User Manual	18
Exit Boson NetSim	18
Navigation	18
Home	18
Saved Files	19
Welcome	19
News	19
Labs	19
Lab Navigation	20
Standard Tab	20
Search Labs	20
Available Labs	20

Lab Description.....	20
Courseware Tab.....	20
Custom Tab.....	21
Lab Instructions / NetMap Section.....	21
Lab Instructions Tab.....	21
NetMap Tab	21
Consoles Section.....	22
Console Window	23
Settings Button	23
SDM Button	23
Network Designer	23
Creating a New Topology.....	24
Add Devices	25
Add Connections	27
Device Statistics	32
Save.....	32
Lab Compiler.....	32
Compiling a Lab.....	33
XPS File.....	33
BSN Topology File	33
BSN Loading Configuration File	33
BSN Completed Configuration File.....	34
Creating a Custom Lab Pack.....	34
Using the Lab Compiler Wizard to Create a Lab Pack	34
Manually Creating a Lab Pack.....	35
Adding a Section to a Lab Pack	35
Adding a Lab to a Lab Pack Section	36
Troubleshooting	38
Some of my labs have locks next to them, and I can't work through them.....	38
Commands seem to disappear when I press the Enter key on the number pad in Telnet mode.....	38
Telnet is not working on my Windows 8, Windows 7, or Windows Vista computer.....	38
The Custom tab is empty	38

Boson NetSim Overview

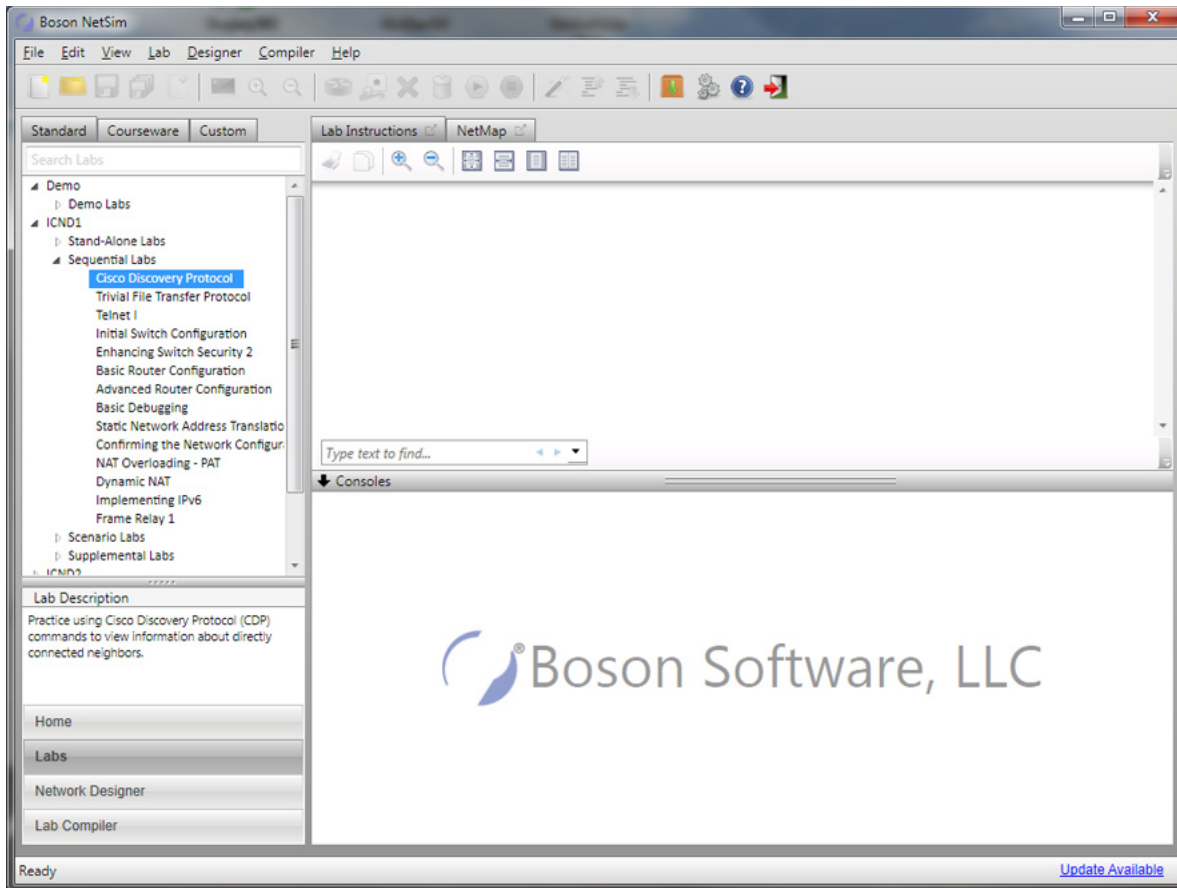
The Boson NetSim® Network Simulator®, which includes the Boson Router Simulator®, is unique compared to all others on the market because of the functionality it supports and its features. NetSim utilizes Boson's proprietary Network Simulator, Router Simulator®, and EROUTER® software technologies, along with the Boson Virtual Packet Technology® engine, to create individual packets. These packets are routed and switched through the simulated network, allowing NetSim to build an appropriate virtual routing table and simulate true networking. Other simulation products on the market do not support this level of functionality.

NetSim is a Windows®-based product that simulates a wide variety of Cisco® routers, including the 2500 series, 2600 series, 2800 series, and 3600 series routers, as well as the Cisco Catalyst 1900 series, 2900 series, and 3500 series switches. NetSim supports multiple routing protocols, including RIP, IGRP, EIGRP, BGP, and OSPF. It supports different LAN/WAN protocols, including PPP/CHAP, ISDN, and Frame Relay. The labs in NetSim require only the devices and functionality included with NetSim—they do not require access to any external router or switch hardware. NetSim supports many, but not all, of the IOS commands available on a physical router or switch. All of the commands referenced in the available labs are supported by NetSim.

Achieving Cisco CCENT®, CCNA®, or CCNP® certification is the goal of many people who use this product. The Boson NetSim covers not only the SWITCH (642-813), TSHOOT (642-832), and ROUTE (642-902) certifications but also the ICND1 (100-101), ICND2 (200-101), and CCNA (200-120) certifications, among others. The included labs guide you through the configuration of routers, switches, and workstations in a variety of scenarios. Installed labs are made available (unlocked) depending on the activation key used to activate the product. All labs are downloaded and kept up to date after installation regardless of the activation key used; however, the only labs that are available are ones that have been unlocked with the associated activation keys.

Activation keys unlock labs and increase the number of available commands. Beginning with the Demo version of NetSim 10, the command set is limited to those necessary to perform the steps in the lab. For example, if you start your studies with a CCENT activation key, you will have the command set and labs available that are necessary to study for that exam. When you are ready to study for either the CCNA or CCNP exam, you will need to purchase a new activation key and activate NetSim with the new CCNA or CCNP activation key; then, more labs and a larger command set become available.

Some of the labs available in the Sequential lab pack when a CCENT activation key has been used to activate NetSim 10 are shown in the following graphic. A CCENT activation key also unlocks a selection of labs from the Stand-Alone and Scenario lab packs. A small lock icon (🔒) is displayed next to unavailable labs. Higher-level activation keys allow you to work through all labs unlocked by lower-level activation keys. All demo, CCENT, CCNA, and CCNP labs are unlocked when a CCNP-level activation key is used. Some lab packs are delivered by NetSim to support other products that are sold separately. If you have questions about locked labs, please contact support@boson.com.



After you load and complete an unlocked lab, you can use the grading function in NetSim to grade the lab so that you can determine whether you completed it correctly. As you progress through the labs, you can master the skills needed to pass the simulation questions in the Cisco certification exams. NetSim has the ability to guide and grade, and using it for practice can be more helpful than using real routers and switches. NetSim allows you to gain experience without requiring you to purchase expensive equipment.

You can use the Boson NetSim to work through labs, but you can also use it for additional purposes. The included full version of the Network Designer tool allows you to practice designing and planning a network. This tool's functionality goes beyond that of most tools because you can actually create the router configurations that are going to be used, save those configurations, and practice using them on simulated devices.

Routing protocol implementation is one of the more challenging tasks you might encounter. Troubleshooting a production network can be a frustrating experience. Fortunately, you can create a virtual copy of your network topology by using the Boson Network Designer and troubleshoot the problems without interfering with your production network. Because NetSim is designed as a study tool for Cisco certification, you should not rely only on NetSim to make decisions about a production network, but you might find it useful in your troubleshooting efforts.

In summary, Boson NetSim is a flexible and powerful product that can help you become certified and, in some cases, it can be used to create a simulation of the topology of your corporate network and help you practice troubleshooting without using devices on the production network.

Using NetSim to Prepare for Your Certification

By using NetSim to help you achieve a Cisco certification, you can learn and master the skills necessary to help you successfully complete your certification track. The purpose of NetSim is to help you with the practical, hands-on portion of your education and to ensure that you not only understand the concepts of routing but can actually configure and implement routing on Cisco devices.

Mastering Cisco networking involves two fundamental tasks:

1. Learn the theory of routers and switches.
2. Gain the hands-on experience of implementing that theory by configuring the devices in a network and testing them in a lab.

Self-studying for a Cisco certification can be a daunting task. The amount of information a CCNA candidate is required to know and the skills that candidate is required to possess are quite extensive. To begin learning the theory of configuring a network, you can find a good reference book or listen to an instructor. (Boson Training, www.boson.com/boson-training, offers a full slate of classes and Bootcamps.) But a reference book might not be enough. The book will not give you the practical, hands-on experience of routing and switching that you can learn from NetSim—experience that will help you build on the theoretical knowledge you learned from the reference book.

Real equipment gives you the ability to practice on physical routers and switches, but it also is a very costly way to practice and leaves a lot of room for error. The Boson NetSim, on the other hand, is an excellent tool to help you prepare for the CCNA (www.boson.com/certification/CCNA) and CCNP (www.boson.com/certification/CCNP) exams. NetSim simulates the behavior of a network and does not just return preprogrammed responses to expected command inputs. It allows you to create virtual packets and virtual frames that will be routed and switched through the simulated network. Aside from physically plugging in the cables and listening to the fan noise, your experience with the simulated network will be much the same as your experience with a fully functional lab rack without the expense of the hardware. NetSim will enable you to practice various configurations and master helpful skills.

Once you feel you have mastered both the theory (www.boson.com/boson-training) and the practical labs (www.boson.com/netsim-cisco-network-simulator), you can test your knowledge by using the Boson ExSim-Max practice exam products available at the ExSim-Max home page (www.boson.com/exsim-max-practice-exams). Boson ExSim-Max products include complex multiple-choice questions, drag-and-drop questions, Boson NetSimX simulation questions, and trouble tickets.

The Boson NetSim Network Simulator is the most comprehensive product on the market for learning how to configure a Cisco router. The Boson NetSim will not only help you become certified, it will help you learn and understand how to configure routers, switches, and networks.

Contact Information

EMAIL: support@boson.com
PHONE: 877-333-EXAM (3926)
615-889-0121
FAX: 615-889-0122
ADDRESS: 25 Century Blvd. Ste. 500
Nashville, TN 37214

Copyright © 1996 – 2014 Boson Software, LLC. All rights reserved. NetSim software and documentation are protected by copyright law.

NetSim Technical Support

- To review NetSim support topics, go to the NetSim Products Support Topics page (www.boson.com/support/netsim-support-topics).
- To submit a support ticket, go to Boson's Web site (www.boson.com) > log in to your account > click the **Support Tickets** tab > start a new ticket.

License Solutions

- Single-User License Agreement (SULA) – You can review the SULA here (www.boson.com/sula).
- License Server – For our unique license-server solutions and volume discounts, contact us at www.boson.com, 877-333-EXAM (3629) or support@boson.com.

Getting Started

System Requirements

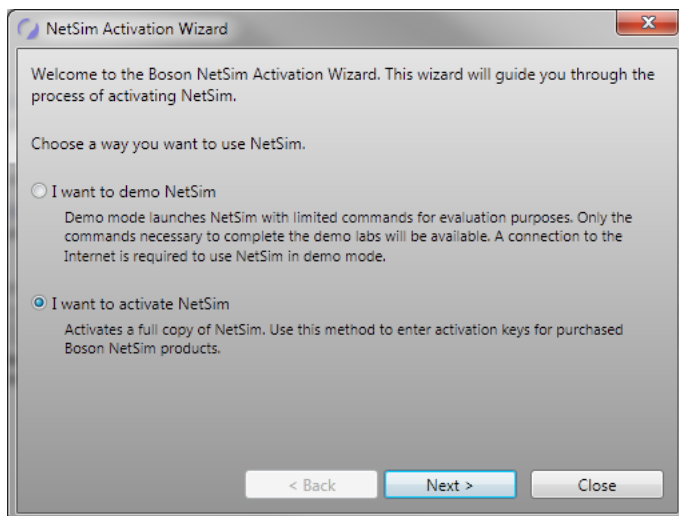
- Supported operating systems: Windows 8, Windows 7, Windows Vista, Windows XP
- .NET Framework: Microsoft .NET Framework Version 4.0
- Processor: 1-GHz Pentium processor or equivalent (minimum); 3-GHz Pentium processor or equivalent (recommended)
- RAM: 512 MB (minimum); 2 GB (recommended)
- Hard Disk: Up to 100 MB of available space
- Display: 1024 x 768, 256 colors (minimum); 1024 x 768 high color, 32-bit (recommended)
- Active Internet connection

Product Activation

You must have a Boson account to download the NetSim Demo. To create a free account, visit the Boson Online Account page (www.boson.com/Account/Default.aspx) and enter a valid e-mail address to begin creating an account.

You can open NetSim from the shortcut installed during the download or from the Start menu by clicking **Boson Software > Boson NetSim 10.0 > Boson NetSim**. If you are a student using NetSim 10 at a learning institution, you should launch NetSim 10 from the Start menu by clicking **Boson Software > Boson NetSim 10.0 > Boson NetSim LS Client**. This will enable you to configure NetSim 10 to authenticate with the Boson NetSim License Server.

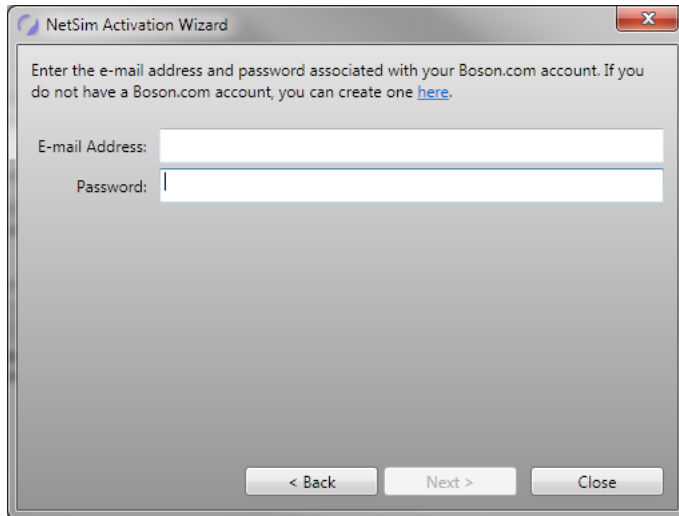
When you first open NetSim, you will be presented with the **NetSim Activation Wizard** dialog box. You can select the Demo version of NetSim or a full version of NetSim.



Demo Version

Demo mode launches NetSim with limited commands for evaluation purposes. You will be asked to select how you are connected to the Internet. If you are using a proxy server, you must configure the appropriate settings.

When prompted, enter the e-mail address and password associated with your Boson.com account. If you have not previously created a Boson.com account, you can create one through the NetSim Activation Wizard.



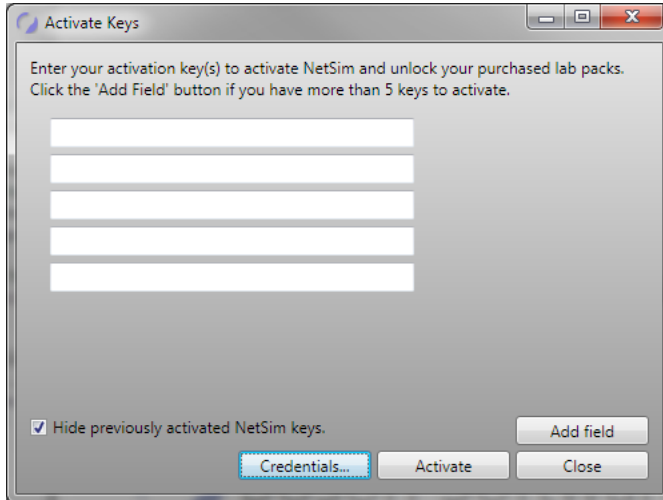
Within the Demo version of NetSim, only a few labs and commands are available. If you would like to access additional labs and commands, you must activate a full version of the Boson NetSim.

If you have not purchased an activation key for NetSim, you will not be able to activate the full version of NetSim. However, you can choose to continue in Demo mode. When you are running the Demo version, only the Demo labs and a limited set of commands are functional. To purchase the full version of NetSim, visit the About NetSim page (www.boson.com/netsim-cisco-network-simulator) of the Boson Web site.

Full Version

To activate a full version of NetSim, you should select the **I want to activate NetSim** option from the **NetSim Activation Wizard** dialog box and click **Next**. When prompted, enter the e-mail address and password associated with your Boson.com account. If you have not previously created a Boson.com account, you can create one from the Boson Online Account page (www.boson.com/Account/Default.aspx).

You will then be required to enter your activation key(s) to activate NetSim and to unlock the lab packs you purchased. After entering your activation key(s), click **Activate**.



The activation key(s) should be in the purchase receipt you received via e-mail, or you can find the receipt online on your Boson Online Account page (www.boson.com/Account/Default.aspx). To activate a full version of NetSim online, you must have an active Internet connection; if you do not have an active Internet connection, you can use manual activation to activate offline.

If you have previously activated NetSim with another key and would like to see that key, you can clear the **Hide previously activated NetSim keys** option; the **Hide** option is enabled by default. Additionally, if you have multiple keys that you would like to use to activate NetSim, you can click the **Add Field** button to add fields to the dialog box. If you open NetSim and are not prompted to activate, either because you previously used the Demo version or because you activated with a different activation key, you can click **Help > Activate Keys** to open the **Activate Keys** dialog box. You can click the **Credentials** button to verify that the associated account is your Boson.com account.

If necessary, click **Close** to proceed to the full version of NetSim.

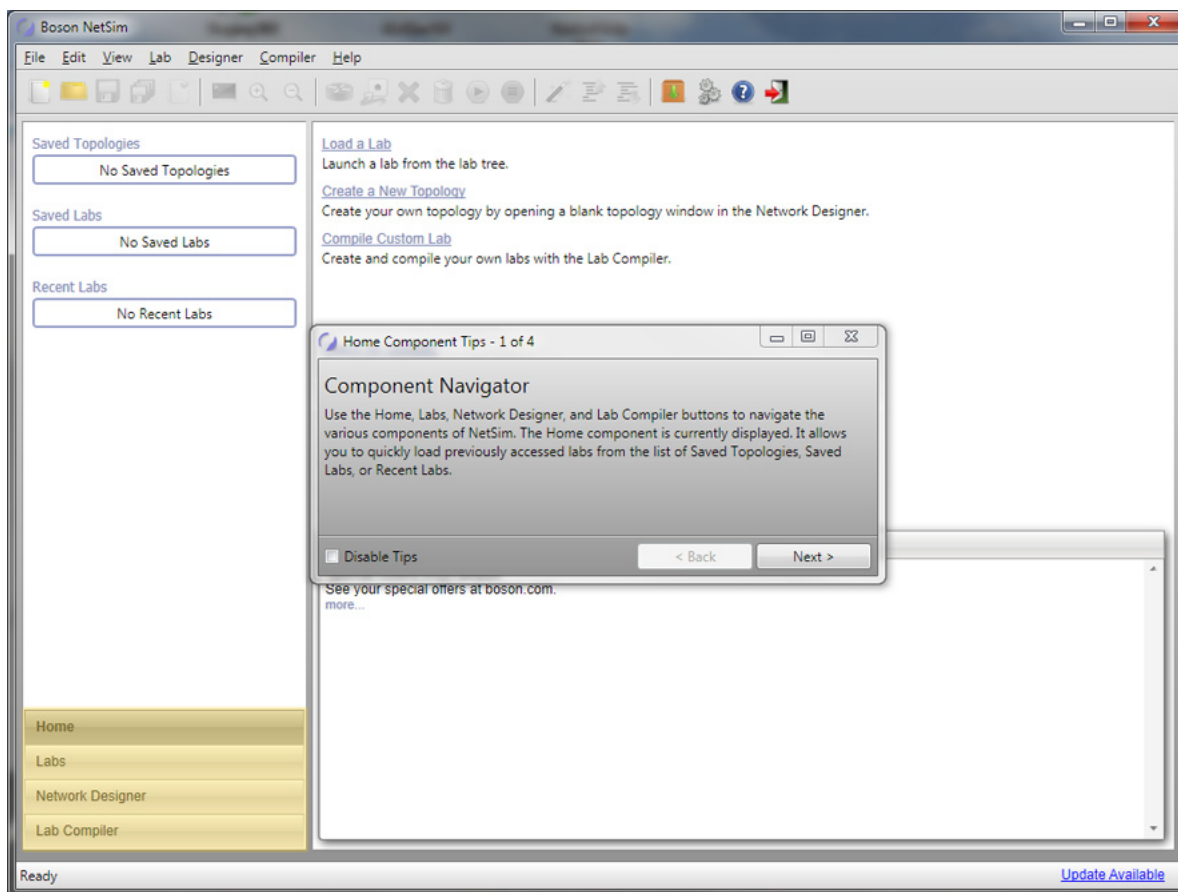
After a successful activation, the lab packs will be updated and NetSim will be ready for you to use. Installed labs are made available (unlocked) depending on the activation key used to activate the product. A small lock icon (🔒) is displayed next to unavailable labs. To make locked labs available, you will need to purchase and enter the new activation key; then, more labs and a larger command set become available.

Guided Tips

After you have activated NetSim (either the Demo version or a full version), you will see various dialog boxes with useful information about the features of NetSim. These tips will guide you through the **Home** panel, the **Labs** panel, the **Network Designer** panel, and the **Lab Compiler** panel.

Home Component Tips

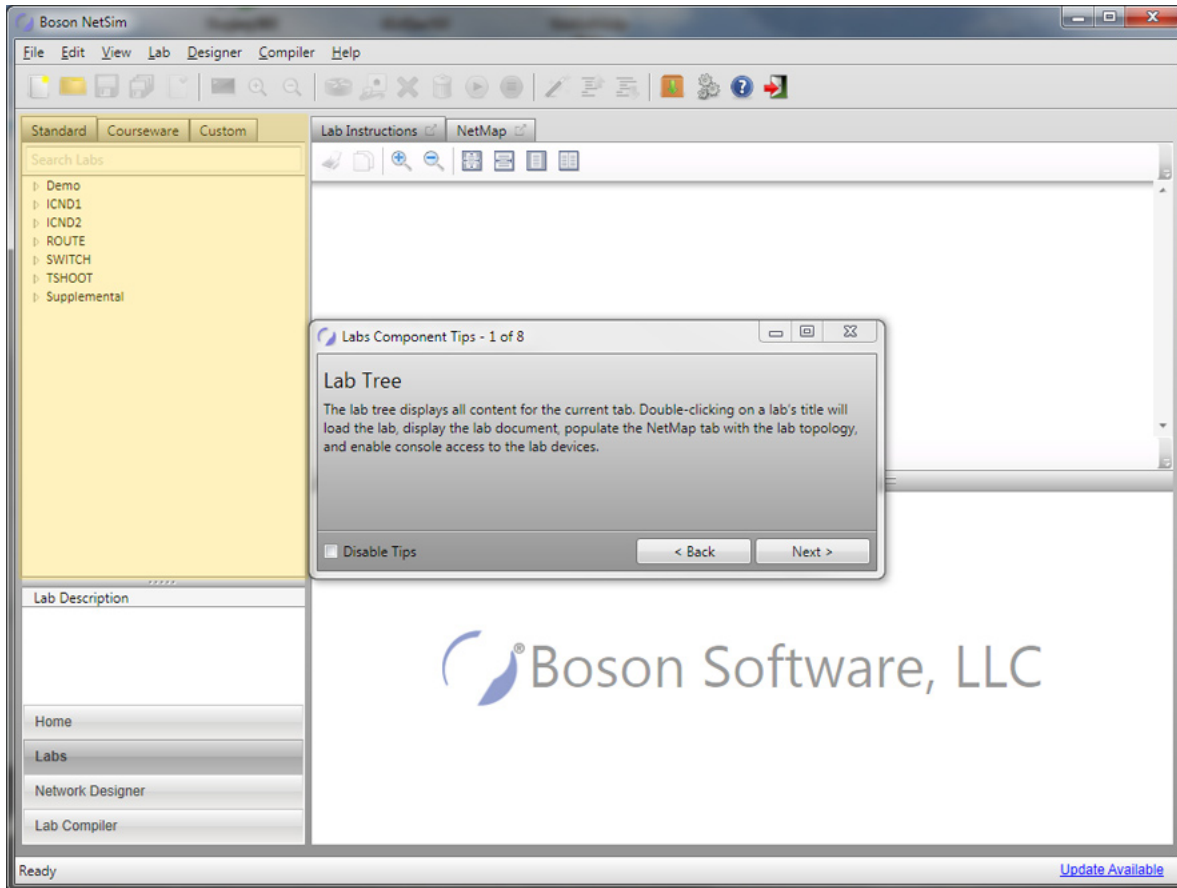
The Home Component Tips highlight and describe aspects of the [Home panel](#). You can read the tips within the dialog box, and you can see the areas described within the text by looking for the highlighted portion of the screen. In the following graphic, the four navigation buttons are highlighted in the lower-left corner of the screen:



You can scroll through the tips by clicking the **Back** and **Next** buttons. If you do not want to view the tips the next time you launch NetSim, you can disable the tips by selecting the **Disable Tips** check box.

Lab Component Tips

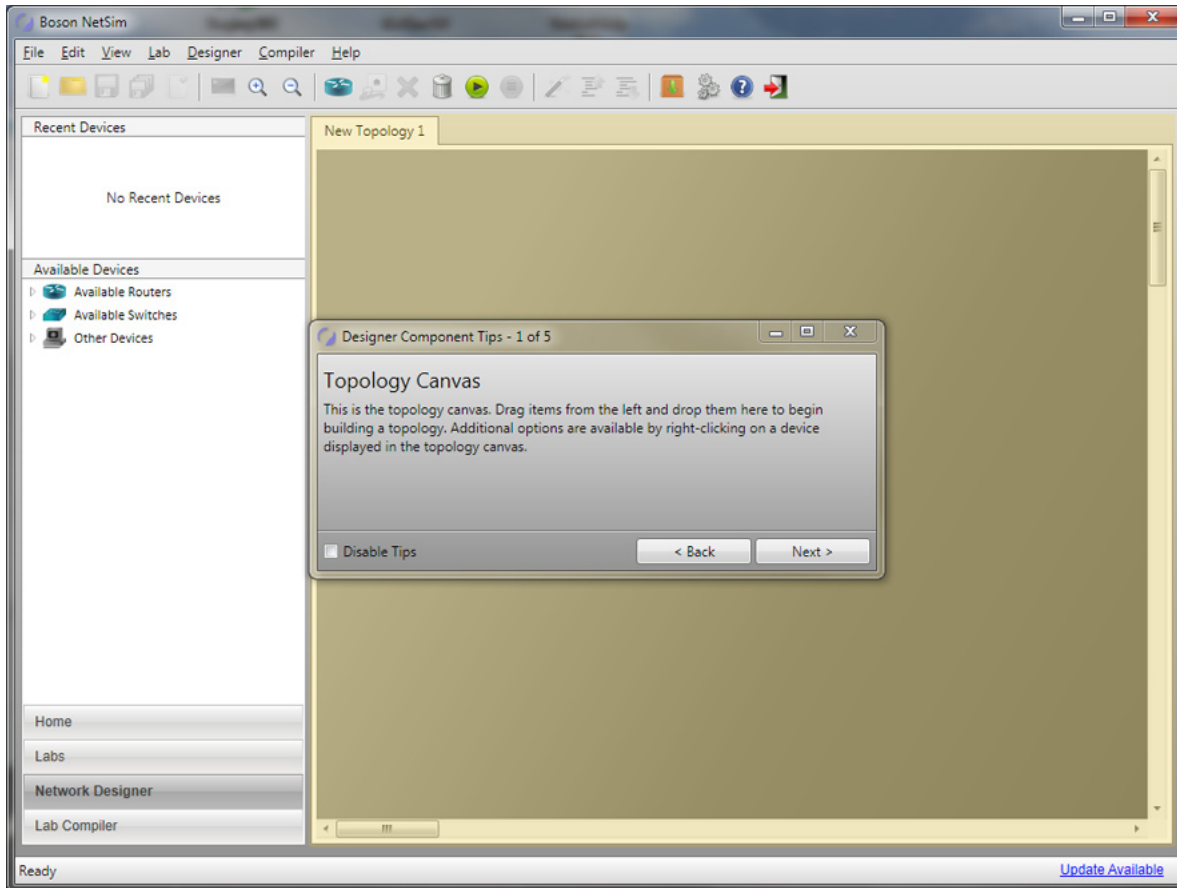
The Lab Component Tips highlight and describe aspects of the [Labs panel](#). You can read the tips within the dialog box, and you can see the areas described within the text by looking for highlighted portion of the screen. In the following graphic, the available locked and unlocked labs area is highlighted:



You can scroll through the tips by clicking the **Back** and **Next** buttons. If you do not want to view the tips the next time you launch NetSim, you can disable the tips by selecting the **Disable Tips** check box.

Designer Component Tips

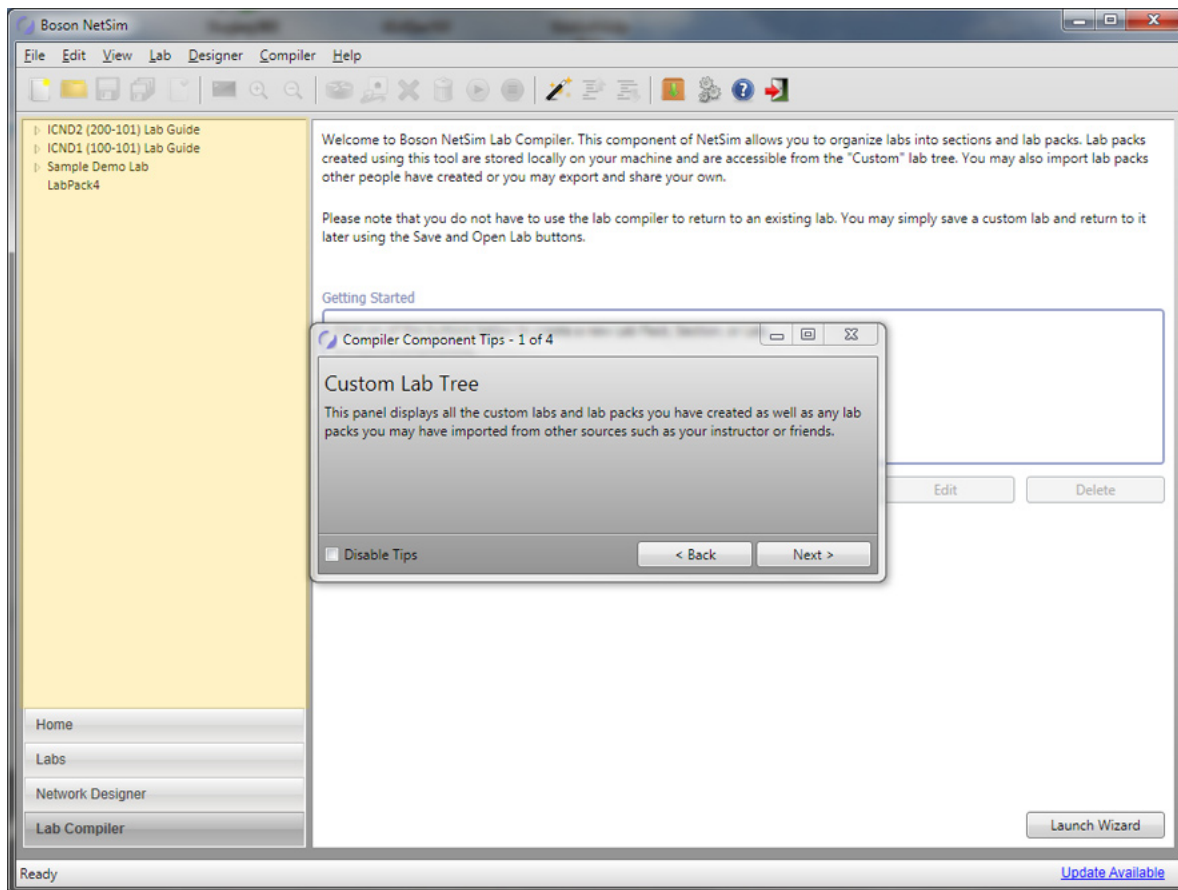
The Designer Component Tips highlight and describe aspects of the [Network Designer panel](#). You can read the tips within the dialog box, and you can see the areas described within the text by looking for highlighted portion of the screen. In the example below, the NetMap area is highlighted:



You can scroll through the tips by clicking the **Back** and **Next** buttons. If you do not want to view the tips the next time you launch NetSim, you can disable the tips by selecting the **Disable Tips** check box.

Compiler Component Tips

The Compiler Component Tips highlight and describe aspects of the [Lab Compiler panel](#). You can read the tips within the dialog box, and you can see the areas described within the text by looking for highlighted portion of the screen. Any custom labs that you have created or are creating will appear in the section highlighted in the following graphic:




You can scroll through the tips by clicking the **Back** and **Next** buttons. If you do not want to view the tips the next time you launch NetSim, you can disable the tips by selecting the **Disable Tips** check box.

To close the Guided Tips, click **Close** and confirm that you want to exit the tips.

Begin a Lab

To begin a preloaded Boson NetSim lab, perform the following steps:

1. On the navigation pane, click **Labs**.
2. On the **Standard** tab, double-click the lab you want to open.
3. After you have loaded a lab, click the **Lab Instructions** tab and read through the lab instructions.

4. From the **Devices** drop-down menu in the **Consoles** section, select the device(s) that you need to configure in order to complete the lab and follow the steps in the lab.
5. When you have completed the lab, click the Grade Lab icon () on the toolbar to ensure that you have completed the lab successfully.
6. You can choose to save your configurations by selecting the appropriate **Save** option from the **File** menu. There is more information about saving device configurations in the [Network Designer](#) section or the [Quick-Launch Toolbar](#) section of this manual.

Menus

The menu options in NetSim 10 enable you to easily navigate through the labs, the [NetMap and Network Designer](#), the [Lab Compiler](#), the [Consoles section](#), and more. These menus include the [Menu Bar](#) and the [Quick-Launch Toolbar](#).

Menu Bar

File Menu

The options in this menu tree enable you to open configuration files, open topology files, save configuration files, save topology files, import and export labs, and exit the program.

New

This option opens a new topology in the [Network Designer](#).

Open

This option enables you to select a file to open. The supported file extensions are *.lab and *.bsn.

Save

This option enables you to save your current lab or topology and configurations. Files are saved with the *.lab or *.bsn extension.

Save As

This option enables you to save your current lab or topology and configurations. Files are saved with the *.lab or *.bsn extension.

Save All

This option enables you to save all unsaved lab, topology, and/or configurations that are currently open. Files are saved with the *.lab or *.bsn extension.

Package Lab

This option is primarily for [License Server](#) users and enables those users to save the current lab. This option adds user data so that instructors know who submitted the labs.

Import

This option imports network configurations, a previously saved lab, a previously saved lab pack, or legacy NetSim files.

Export

This option exports the network configurations currently running in the simulator, a lab or lab pack created with the [Lab Compiler](#), or the current topology in the Network Designer.

Recent Saved Topologies

If you recently saved a topology, it will appear in this list. You can click a file name to open the topology.

Recent Saved Labs

If you recently saved a lab, it will appear in this list. You can click a file name to open the lab.

Recent Loaded Labs

If you recently loaded a lab, it will appear in this list. You can click a file name to open the lab.

Exit

This option closes the program.

Edit Menu

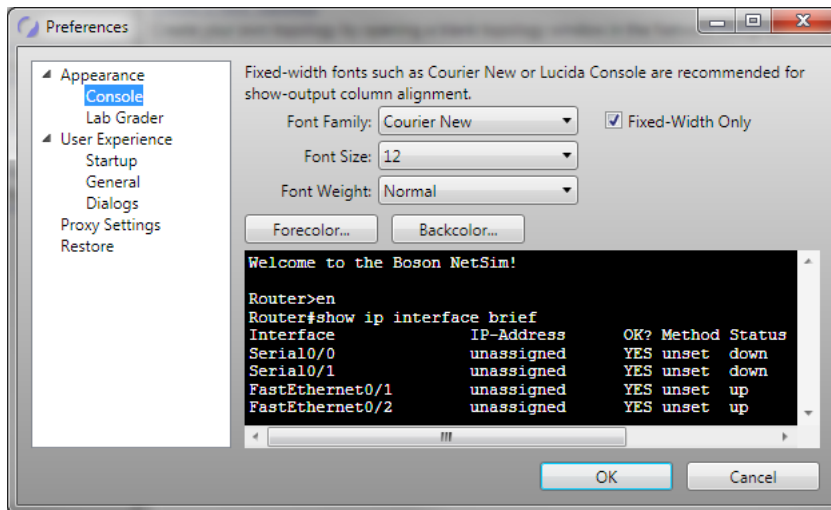
The options in this menu tree enable you to configure proxy settings and change your preferences.

Proxy Settings

This option enables you to configure proxy settings for an Internet connection.

Preferences

This option opens the **Preferences** dialog box, from which you can configure the appearance of NetSim, the user experience (including the layout and dialogs), and the proxy settings. You can also configure the lab to load with the instructions in a separate window (see more information in the [Lab Instructions Tab](#) section), and you can configure the lab to load with a tab open for all devices in the associated topology (see more information in the [Lab Menu](#) section). This also enables you to restore program defaults.



View Menu

The options in this menu tree enable you to alter the way you view the panels within NetSim.

Current Mode

This option enables you to select the way you view the consoles of the devices you are configuring in a lab. In Window mode, each device is accessible on the [Consoles section](#) of the [Labs panel](#). In Telnet mode, each device is accessible through a separate Telnet window for each device.

Current View

This option enables you to switch among the options on the navigation pane: [Home](#), [Labs](#), [Network Designer](#), and [Lab Compiler](#).

Toolbar

Clear this option to hide the [Quick-Launch toolbar](#). Select this option to restore the Quick-Launch toolbar.

Status Bar

Clear this option to hide the status bar at the bottom of the screen. Select this option to restore the status bar.

Auto Collapse Tree

Clear this option to expand all options in the lab menu. Select this option to collapse all options in the lab menu.

Auto Hide Menu

When this option is enabled, press the tilde key (~) to hide or display the [Menu Bar](#). To disable the auto hide functionality, clear this option.

Lab Menu

This menu tree enables you to perform all the functions you need once a lab is loaded.

Load Lab

After you select a lab from the navigation pane, click this option to load the lab instructions, topology, and configurations.

Grade Lab

After you have completed a lab, click this option to verify that you have completed the lab successfully.

Launch External Lab Viewer

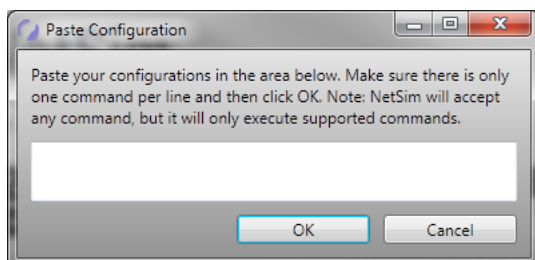
Click this option to open the lab instructions in a new window. You can then move the instructions to a second monitor or place them beside, above, or below the original NetSim window. This feature provides multimonitor support so that you can view the lab document on one monitor while entering commands on a second monitor.

Launch External NetMap Viewer

Click this option to open the NetMap in a new window. You can then move the NetMap to a second monitor or place the NetMap, which displays the topology, beside, above, or below the original NetSim window. This feature provides multimonitor support so that you can maximize the use of your computer real estate and easily view the topology on one monitor while entering commands on a second monitor.

Paste Router Configuration

This option allows you to paste the running configuration from a real router into a device in NetSim. Selecting this menu option when a lab is loaded will open a dialog box into which you can paste or type the desired configuration. The configuration will be loaded into the active device in the NetSim interface.



Open All Devices

Click this option to open a tab in the **Consoles** section for every device in the network of the currently loaded topology. You can selectively close individual devices by clicking the close icon (✖).

Designer Menu

The options in this menu enable you to create a new topology and modify existing ones. You can add devices and connections to the topology in [Network Designer](#), and you can also click and drag the devices to rearrange your simulated network.

New Topology

This option enables you to begin designing a new topology.

Clear Topology

This option enables you to clear the topology you are creating. You will be asked to confirm that you want to clear the topology.

Add

This option enables you to add devices and connections to your topology. Clicking **Add > Device** will open the **Add Device** dialog box, from which you can choose the device you want to add. Clicking **Add > Connection** after you have added at least two devices and selected one on the topology will open the **New Connection** dialog box, from which you can choose the connection type and interfaces.

Compiler Menu

The options in this menu tree enable you to create a new lab pack for personal or instructional use.

New

This option enables you to select a new custom lab pack, a new lab, or a new section. To view the new lab pack, click the **Lab Compiler** button. More information can be found in the [Compiling a Lab](#) section of this manual.

Edit

This option enables you to edit the title of previously created custom sections or lab packs and enables you to edit previously created custom labs.

Delete

This option deletes the selected lab pack, section, or lab. You will be asked to confirm that you want to delete the selected component.

Wizard

This option launches the Lab Compiler Wizard, which enables you to easily compile a lab pack for personal or instructional use.

Help Menu

The options in this menu tree enable you to find out more information about the Boson NetSim Network Simulator and how to find support if you need it.

Guided Tips

This option opens the Guided Tips. The Guided Tips appear when you first open and activate NetSim and guide you through the various features of NetSim. You can scroll through the tips by clicking the **Back** and **Next** buttons, and you can disable the tips by selecting the **Disable Tips** check box and confirming that you want to disable them. To see more details about the Guided Tips, see the [Guided Tips](#) section of this manual.

Users Manual

This option opens the Boson NetSim User Manual, the document you are reading now, which guides you through the features and functionalities of NetSim.

Support

This option displays frequently asked questions (FAQs) on the Boson NetSim support page (www.boson.com/support/netsim-support-topics), allows you to save your current log files in the *.zip format, and allows you to submit a ticket through your Boson.com account.

Activate Keys

This option opens the **Activate Keys** dialog box. From here, you can activate additional versions of NetSim and the associated labs.

Check for Updates

This option closes NetSim and downloads any available updates.

About Boson NetSim

This option displays basic information about NetSim, including the version and company information.

Release Notes

This option displays information about the changes included in the current and previous releases of NetSim. The release notes are shown after the program has been updated. You can choose to not have the release notes appear after the program has updated by clearing the **Display release notes after application updates** check box. You can change the option at any time.

Quick-Launch Toolbar

Icons in the Quick-Launch toolbar are enabled or disabled depending on the pane in use.

New Topology

Click the New Topology icon () to open the Network Designer and begin creating a topology.


Open File

Click the Open File icon () to open a supported file. Supported file types are *.lab and *.bsn.


Save

Click the Save icon () to save your current lab progress (*.lab) or configurations and topology (*.bsn).

Save All

Click the Save All icon () to save all changes, including changes to devices in the Network Designer and changes to their configurations.


Grade Lab

Click the Grade Lab icon () to grade the currently loaded lab.

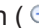
Console to Device

Click the Console to Device icon () to open a device from the NetMap in the **Consoles** section.

Zoom In

Click the Zoom In icon () to increase the size of devices on the NetMap or on the active topology in Network Designer.


Zoom Out

Click the Zoom Out icon () to decrease the size of devices on the NetMap or on the active topology in Network Designer.

Add New Device

Click the Add New Device icon () to add a new device to the to the active topology in Network Designer.


Add New Connection

Click the Add New Connection icon () to add a new connection between two devices on the active topology in Network Designer.


Delete Selected

Click the Delete Selected icon () to delete a selected device from the active topology in Network Designer.


Clear Topology

Click the Clear Topology icon () to delete all devices and connections from the active topology in Network Designer.

Start Simulator

Click the Start Simulator icon () to load the active topology into the simulator, open the **Consoles** section, and begin configuring device. This option is disabled in Demo mode and in labs that are included in NetSim.


Stop Simulator

Click the Stop Simulator icon () to stop the simulator and to reopen Network Designer, where you can reconfigure the devices and connections. This option is disabled in Demo mode and in labs that are included in NetSim.


Launch Lab Compiler Wizard

Click the Launch Lab Compiler Wizard icon () to launch the Lab Compiler Wizard.


Move Selection Up

Click the Move Selection Up icon () to move the selected lab pack, lab section, or lab up a position in the Lab Tree.


Move Selection Down

Click the Move Selection Down icon () to move the selected lab pack, lab section, or lab down a position in the Lab Tree.


Check for Updates

Click the Check for Updates icon () to force Boson NetSim to check for updates.

Edit Application Preferences

Click the Edit Application Preferences icon () to configure preferences such as appearance and user experience.

Open User Manual

Click the Open User Manual icon () to view the Boson NetSim 10 User Manual, which is the document you are currently reading.

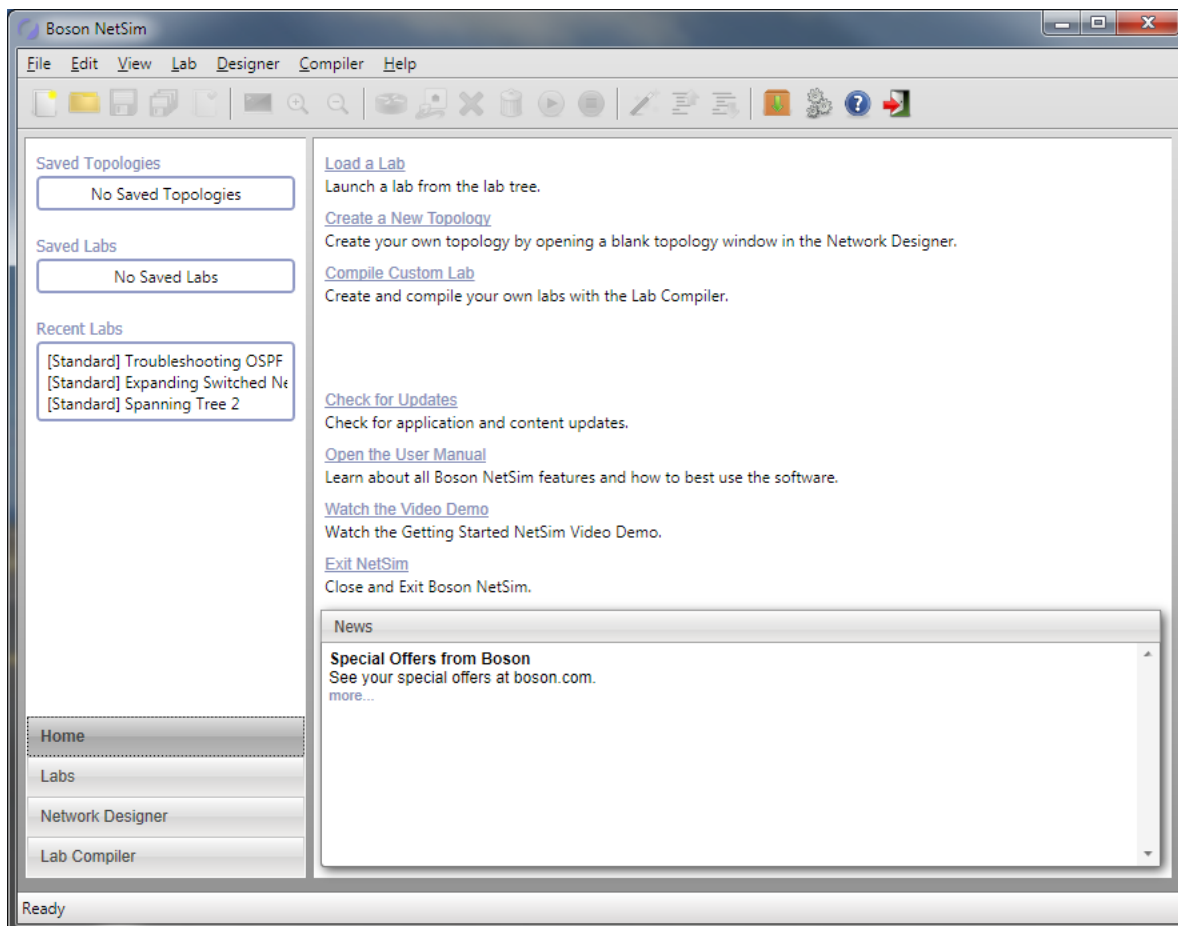
Exit Boson NetSim

Click the Exit Boson NetSim icon () to exit Boson NetSim.

Navigation

Home

You can open the **Home** panel by clicking **Home** on the navigation pane. There are many components of this panel and various features that you can access from this panel. After NetSim loads, you can perform various tasks by clicking the name of a recently loaded topology or lab, selecting a quick option such as checking for updates or opening the NetSim 10 User Manual (this document), or accessing a different panel by clicking **Labs**, **Network Designer**, or **Lab Compiler**.



Saved Files

From this section, you can quickly load a saved topology, saved lab, or recent lab.

Welcome

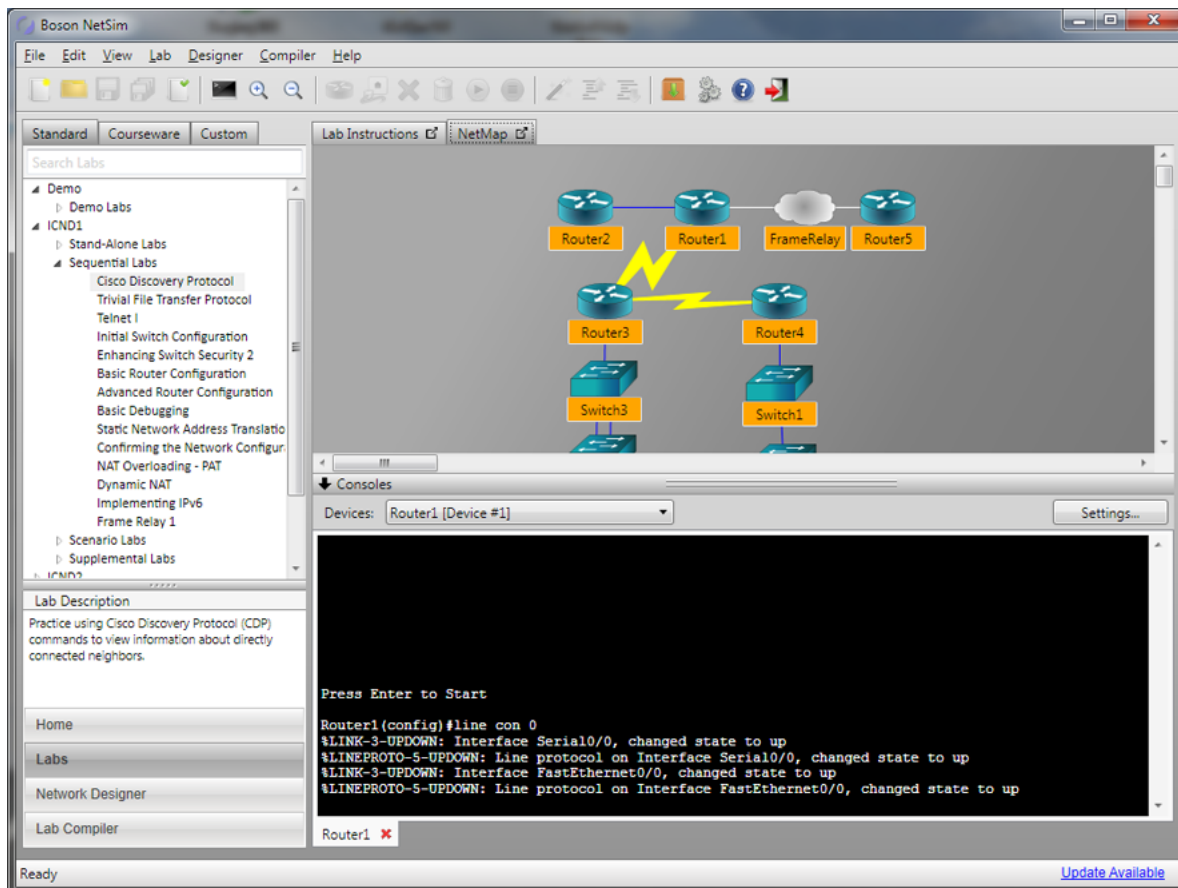
From this, the largest section, you can load a lab, create a new topology, compile a custom lab, and more.

News

This section displays updates and special offers from the Boson Web site (www.boson.com). You can scroll through this section to see the latest news and information, and you can click **more** to view the related offer on the Web site. If you are not connected to the Internet, you might not see any news in this section. To see the latest news from Boson, make sure that you are connected to the Internet.

Labs

You can open the **Labs** panel by clicking **Labs** on the navigation pane. This panel contains three sections: the **Lab Navigation** section, the **Lab Instructions / NetMap** section, and the **Consoles** section. You can click and drag the splitter control between the **Lab Instructions / NetMap** section and the **Consoles** section to increase or decrease the size of those sections.



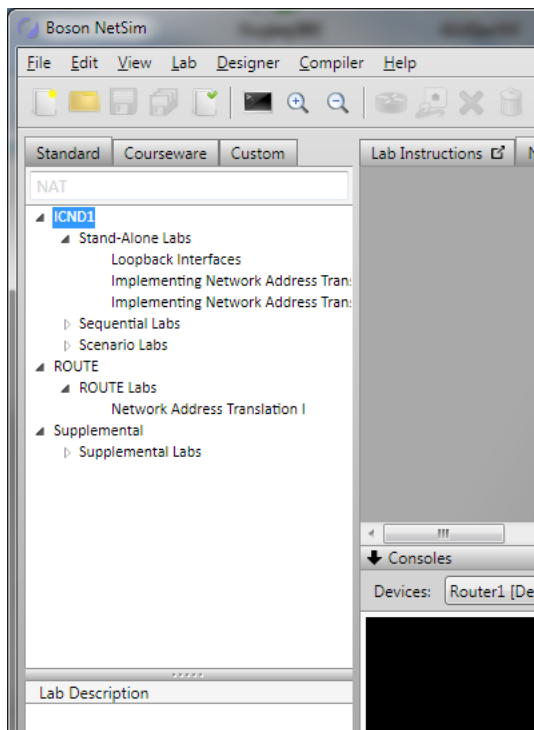
Lab Navigation

Standard Tab

There are three main sections on this tab: **Search Labs**, **Available Labs**, and **Lab Description**.

Search Labs

You can use the **Search Labs** section to search for a specific term within a lab description. You can search throughout all the available labs. For example, if you want to test your Network Address Translation (NAT) skills on labs dealing with NAT, you could type **NAT** in the search box and press the Enter key. You will see labs addressing NAT from the ICND1 Stand-Alone, Sequential, and Scenario lab packs, among others. Note that although the search returned results from additional lab packs, only labs from the currently activated version of NetSim will be available.



Available Labs

There are over 200 labs in NetSim 10, and these labs are arranged in specific categories. The lab packs are Demo, ICND1, ICND2, ROUTE, SWITCH, TSHOOT, and Supplemental. To open a lab on the **NetMap** tab and in the **Consoles** section and to view the lab instructions, double-click the lab or select the lab and click **Lab > Load Lab**. You can expand or collapse the menu items by clicking the arrow next to each category.

Lab Description

The information in this section contains a brief description of the lab. Click an individual lab to view summary information about the lab.

Courseware Tab

Courseware labs will be locked unless you have purchased activation keys for the specific labs. Courseware labs are available for purchase on the Courseware page of the Boson.com Web site (<http://www.boson.com/courseware-cisco-curriculum>). The sections on this tab are the same as the sections on the **Standard** tab.

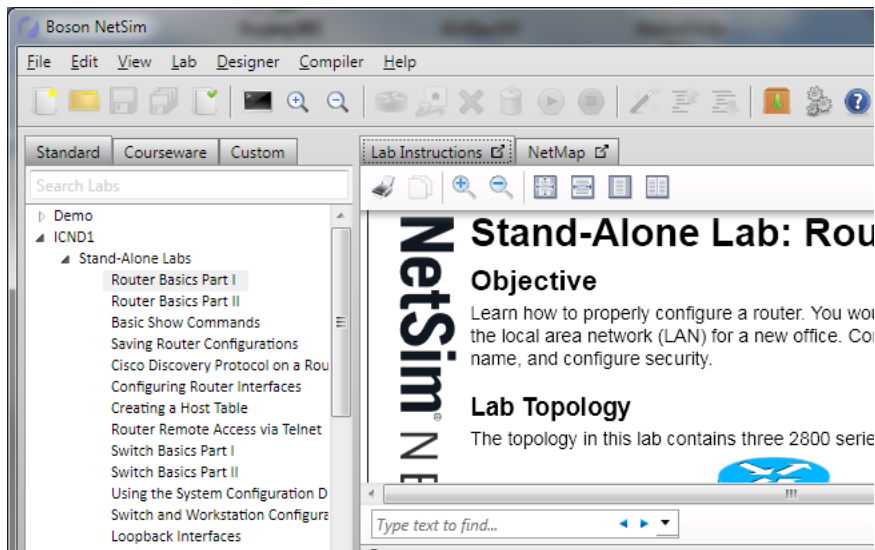
Custom Tab

Custom labs are those that you create or that are provided by an instructor. To learn how to compile your own labs using NetSim, see the [Compiling a Lab](#) section of this manual. The sections on this tab are the same as the sections on the **Standard** tab.

Lab Instructions / NetMap Section

Lab Instructions Tab

Until you load a lab, this section is blank. When you load a lab, the instructions appear here. You can scroll through the instructions as you work through the lab, and you can increase or decrease the size of the content with the zoom controls or by clicking and dragging the splitter control between the **Lab Instructions / NetMap** section and the **Consoles** section.



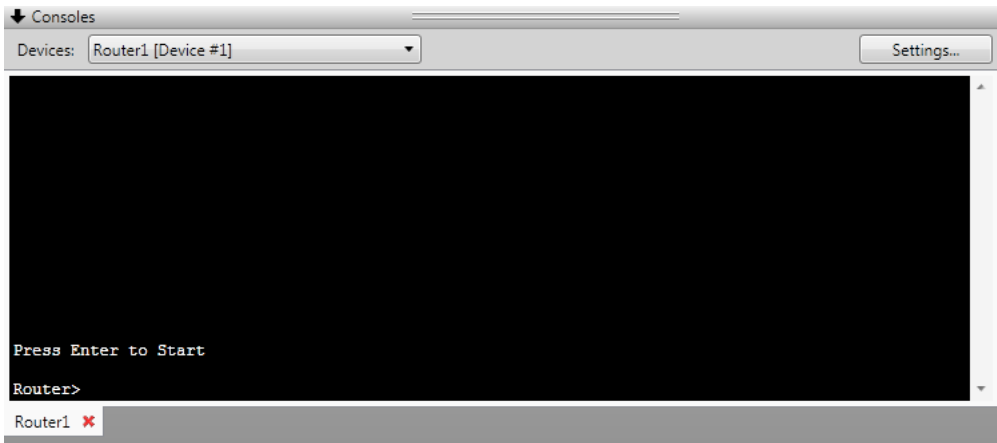
You can type text into the search box to find specific terms in the lab. You can click the down arrow on the far right of the search box to choose to match the whole word only or to match case. Use the left and right arrows next to the search box to find the terms you are searching for throughout the document.

Note: If you have selected to match case, for example, and then decide to match the whole word only and not case, you must click **Match case** again to remove it as a selected search parameter.

You can also launch the external lab viewer to view the instructions in a separate window. You can launch the external lab viewer by clicking **Lab > Launch External Viewer** or by clicking the dialog box launcher icon (☞) on the **Lab Instructions** tab.

NetMap Tab

You can view the topology of the currently loaded lab on this tab. To configure a device, right-click the device and click **Configure in Simulator**; the device will open in the **Consoles** section. If you cannot see all the devices in the topology, you can launch the external NetMap viewer (☞) to view the NetMap in a separate window. You can also use the zoom controls on the Quick-Launch toolbar or click and drag the splitter control between the **Lab Instructions / NetMap** section and the **Consoles** section to expand it.

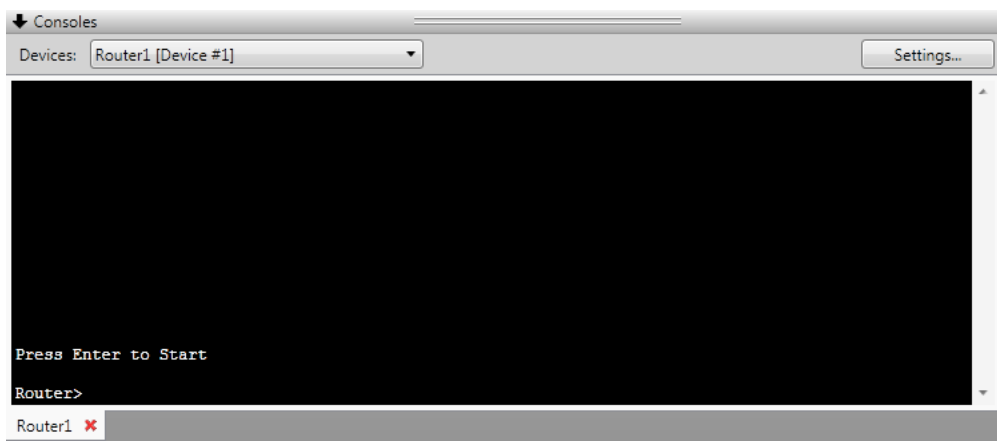


Note: If you have a scroll button on your mouse, you can use it to increase or decrease the size of the devices in the **NetMap** section. You can also click and drag within the section to reposition the topology.

The NetMap is the read-only view of the topology currently running in the simulator. If you wish to edit a custom topology, you can do so by accessing it in the [Network Designer](#).

Consoles Section

After you have opened a lab from the **Standard** tab or the **Custom** tab, you can view the device consoles and begin performing the lab steps. You will see the console window, the **Devices** drop-down menu, the **Settings** button, and device tabs.



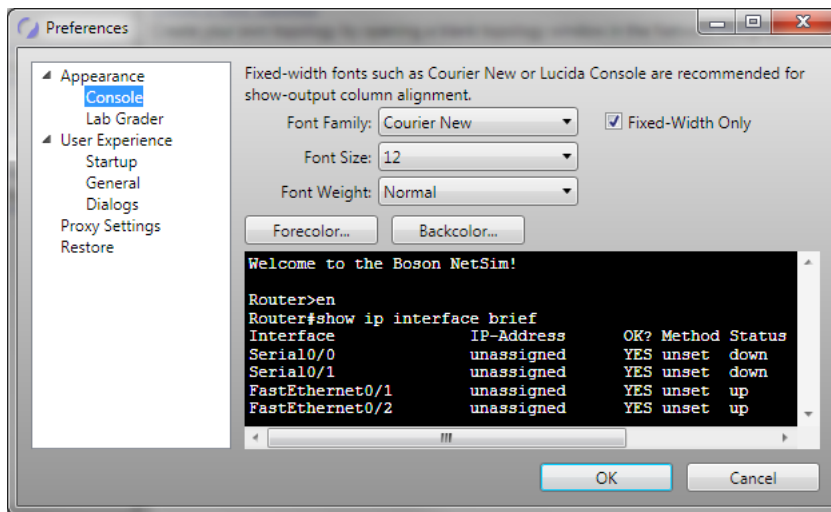
Note: To ensure that you can see the available device consoles, click the arrow next to **Consoles** or click and drag the splitter control between the **Lab Instructions / NetMap** section and the **Consoles** section.

Console Window

From the console window, you can modify the devices and perform the steps in the instructions. The devices in the lab can be accessed from the drop-down menu at the top of the section or from the lower tab menu. Select a specific device to begin performing the lab steps on that device.

Settings Button

The **Settings** button at the top of the **Consoles** section enables you to customize the appearance of the console window. You can select the font family, size, and weight and change the foreground and background colors. Click **OK** to apply the settings or **Cancel** to cancel the changes.



Note: Fixed-width fonts such as Courier New are highly recommended. With fixed-width fonts, output remains properly aligned and is easier to read and interpret.

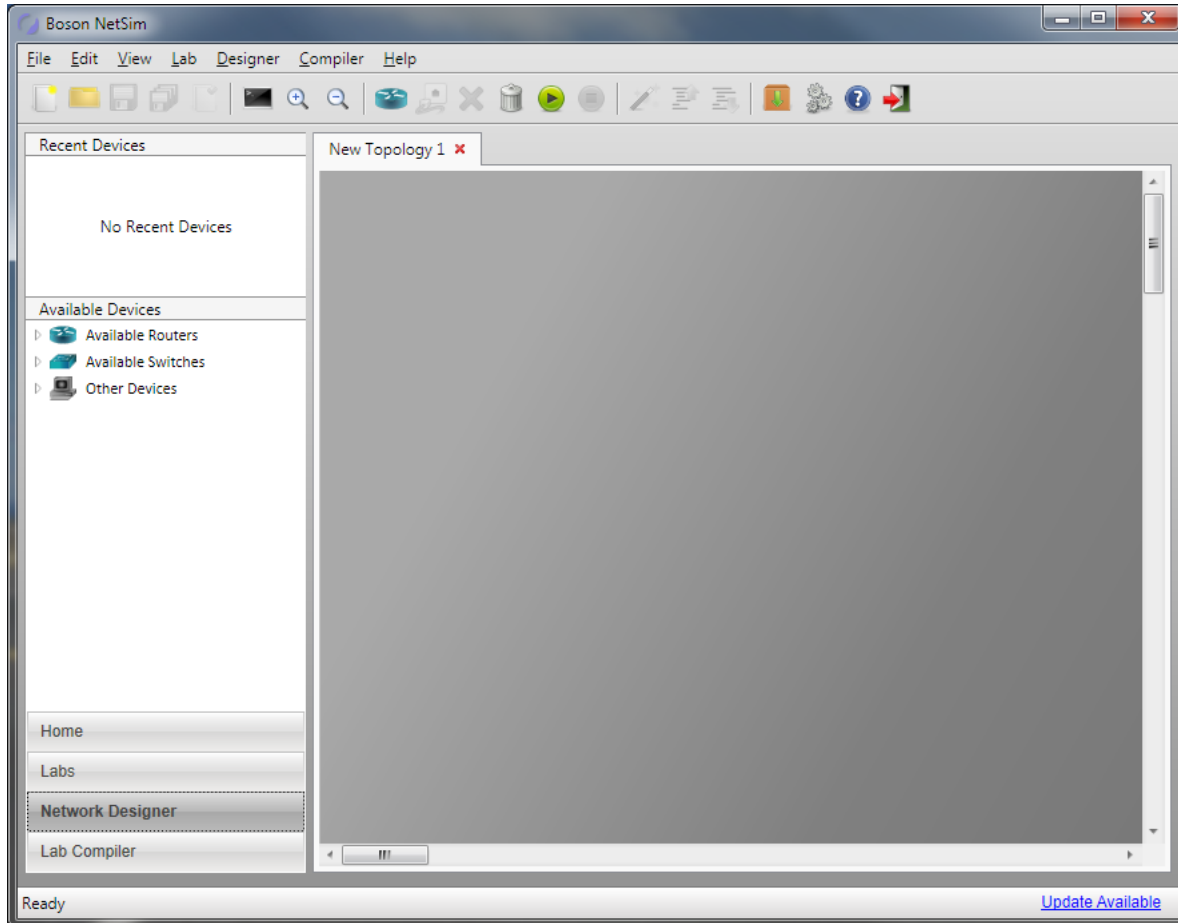
SDM Button

The **SDM** button, when available, enables you to access NetSim Router and Security Device Manager (SDM). SDM is used in certain standard labs that are included with NetSim. This feature, available from a workstation only, is visible only in certain labs and is not available for custom labs.

Network Designer

You can access the Network Designer by clicking **Network Designer** on the navigation pane. There are three sections, **Recent Devices**, **Available Devices**, and the **NetMap**. The **Recent Devices** section shows the five devices you most recently added to the NetMap. The **Available Devices** section shows all devices that are available to add to the NetMap; you can use the options here to create a customized network topology with devices such as routers, switches, and PC workstations and with connections such as FastEthernet, Serial, and Frame Relay connections. Click and drag devices from the **Recent Devices** section to the **Available Devices** section to the NetMap. You can use the Network Designer to modify a topology by adding, editing, and deleting devices and connections; when you save and load a topology, the topology will appear on the read-only **NetMap** tab.

The **Network Designer** panel is shown below:



Creating a New Topology

If you are creating a custom lab or want to gain extra experience with new topologies, you can use NetSim to create topologies with up to 100 devices. Note, however, that larger topologies might cause slow performance on computers that do not have sufficient processing power and memory. You can use this feature to create a topology file (*.bsn) that can be used in a custom lab. To learn more, see the [Compiling a Lab](#) section of this manual or open and perform the NetSim Topology Demo lab for a walkthrough of the feature.

To create a new simulated network topology, perform the following steps.

1. Click **Network Designer** on the navigation pane.

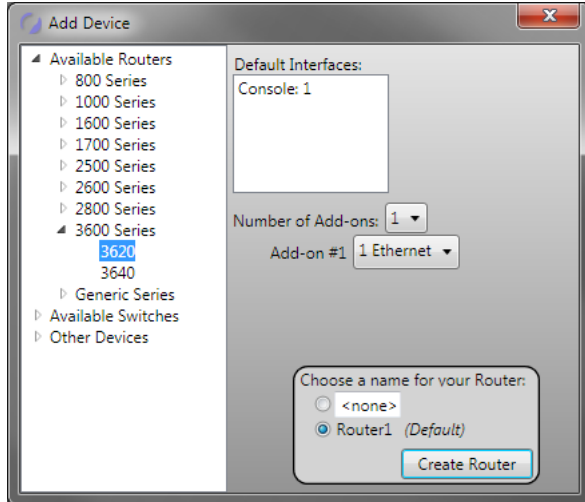
Note: You can rename a **New Topology** tab by double-clicking the current name on the tab and modifying it.

2. Add devices, including [routers](#), [switches](#), [workstations](#), and [IP phones](#), to the topology.
3. Add connections, including [Serial](#), [FastEthernet](#), and [Frame Relay](#) connections, between the devices you added to the topology.

Add Devices

Add a Router

1. Click the Add New Device icon (🔌) on the toolbar.
2. Choose a router from the resulting **Add Device** dialog box. The menus for the available devices are minimized by default, but you can expand them by clicking the arrow next to each category.

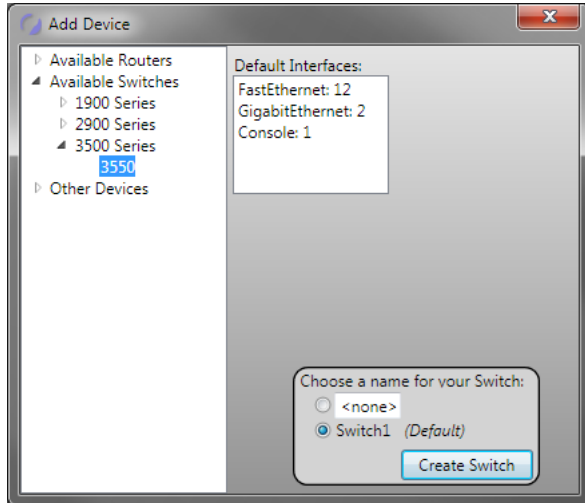


3. Select the number of add-ons (if available) and the type of connection (if available) for each add-on.
4. Choose a name for the router; you can use the default name or type a name in the text box. You can rename a device if desired by clicking the name in the NetMap and modifying it.
5. Click **Create Router**.
6. Add any additional desired devices to the network.

Add a Switch

1. Click the Add New Device icon (🔌) on the toolbar.

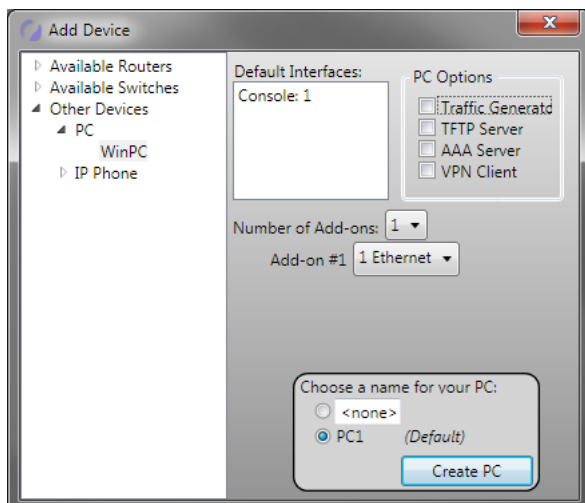
2. Choose a switch from the resulting **Add Device** dialog box. The menus for the available devices are minimized by default, but you can expand them by clicking the arrow next to each category.



3. Choose a name for the switch; you can use the default name or type a name in the text box. You can rename a device if desired by clicking the name in the NetMap and modifying it.
4. Click **Create Switch**.
5. Add any additional desired devices to the network.

Add a Workstation

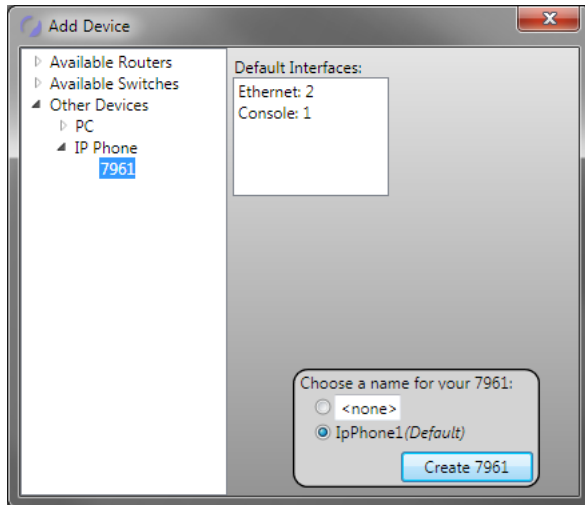
1. Click the Add New Device icon (🔌) on the toolbar.
2. Choose a workstation from the **Other Devices** category in the resulting **Add Device** dialog box. The menus for the available devices are minimized by default, but you can expand them by clicking the arrow next to each category.
3. If you have added the WinPC device, select a PC option if desired. You can choose from **TFTP Server**, **AAA Server**, and **VPN Client**). **Traffic Generator** is only configurable by Boson programmers.



4. Choose a name for the workstation; you can use the default name or type a name in the text box. You can rename a device if desired by clicking the name in the NetMap and modifying it.
5. Click **Create PC**.
6. Add any additional desired devices to the network.

Add an IP Phone

1. Click the Add New Device icon (🌐) on the toolbar.
2. Choose an IP phone from the **Other Devices** category in the resulting **Add Device** dialog box. The menus for the available devices are minimized by default, but you can expand them by clicking the arrow next to each category.



3. Choose a name for the phone; you can use the default name or type a name in the text box. You can rename a device if desired by clicking the name in the NetMap and modifying it.
4. Click **Create 7961**.
5. Add any additional desired devices to the network.

Add Connections

To complete the network, right-click each device on the NetMap. You will see a menu with four options: **Configure in Simulator**, **New Connection**, **Existing Connections**, and **Delete**.

Configure in Simulator

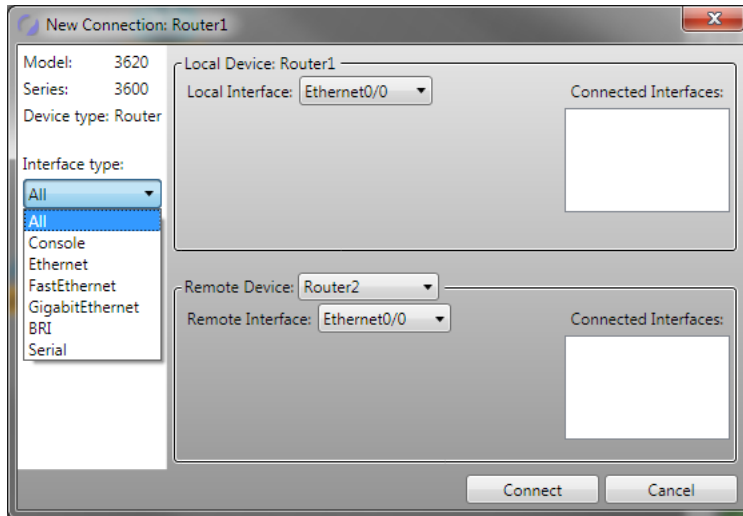
When the topology is loaded into the simulator, clicking this option opens a console session to the selected device.

New Connection

Configure a new connection for a device by performing the following steps:

1. Click the Add New Connection icon (🔌) on the toolbar.


2. In the **New Connection** dialog box, select an interface type from the **Interface type** drop-down box.

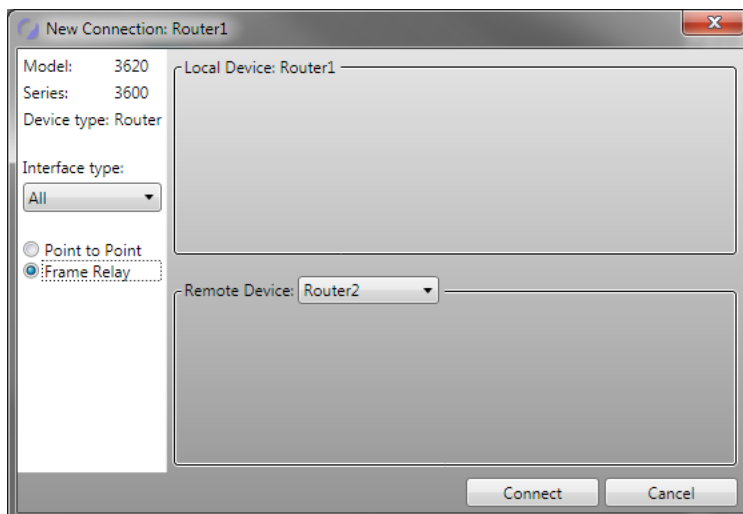


3. Select a local interface (if available), a remote device (if available), and a remote interface (if available).
4. After configuring the desired connection, click **Connect**. The new connection will appear on the NetMap.

Frame Relay Connections

To create a Frame Relay connection, perform the following steps:

1. Add routers to the topology; the routers to be included in the Frame Relay connection must have Serial interfaces.
2. Click the Add New Connection icon () on the toolbar.
3. Select the **Frame Relay** radio button and the appropriate remote device.



4. Click **Connect**.

- In the **Frame Relay** dialog box, type a name for the Frame Relay node in the **Name** field.

The screenshot shows the Frame Relay configuration dialog box. At the top, the 'Name' field is set to 'FR-1' and the 'Number of Node' is set to 2. There are two 'From:' sections, each with a dropdown menu currently showing '<none>'. Below each 'From:' section is a 'To: DLCI Destination' field with a red highlight box. An 'Apply Settings' button and an 'Incomplete Information...' link are also visible.

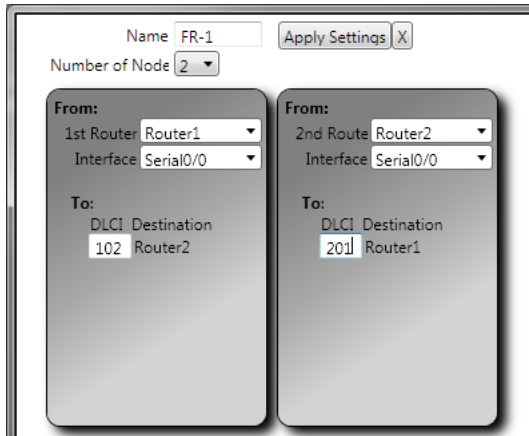
- Select an option from the **Number of Nodes**; the number represents the number of routers that will participate in the Frame Relay connection.
- For each node, select the associated router and interface next to **From: 1st Router** and **From: Interface**. Note that the **To: DLCI Destination** field becomes populated with device names.

Note: You must select a different router for each node.

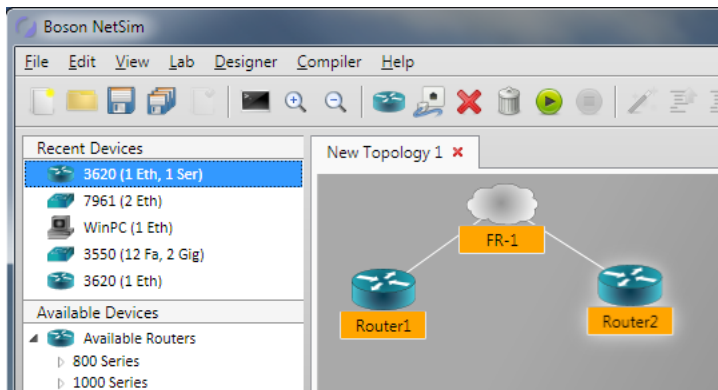
The screenshot shows the Frame Relay configuration dialog box after some settings have been updated. The 'Name' field remains 'FR-1' and 'Number of Node' is still 2. In the first 'From:' section, the '1st Router' dropdown is now 'Router1' and the 'Interface' dropdown is 'Serial0/0'. The 'To: DLCI Destination' field for this section is now populated with 'Router1'. The second 'From:' section remains set to '<none>'.

- For each node, assign a DLCI value in each **To: DLCI Destination** field for the remote routers. For example, for the link from Router1 to Router2, you could use **102**.

Note: The DLCI value must be a numerical value.

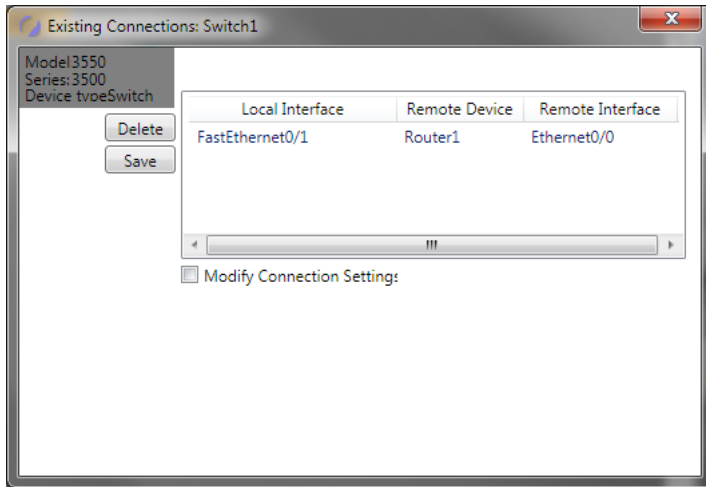


- Click **Apply Settings**. The exhibit below shows a completed Frame Relay connection:



Existing Connections

In the **Existing Connections** dialog box, you can see the type of device and the currently connected interfaces. You can access the **Existing Connections** dialog box by right-clicking a device on the NetMap and selecting **Existing Connections**.





CAUTION: There is no undo and no confirmation dialog box; be sure that you really want to delete a connection before clicking **Delete**.

To delete a connection, click to highlight the connection and click **Delete**. To save the connection, highlight the connection and click **Save**.

Delete

CAUTION: There is no undo and no confirmation dialog box; be sure that you really want to delete the selected device and associated connections before clicking **Delete**.

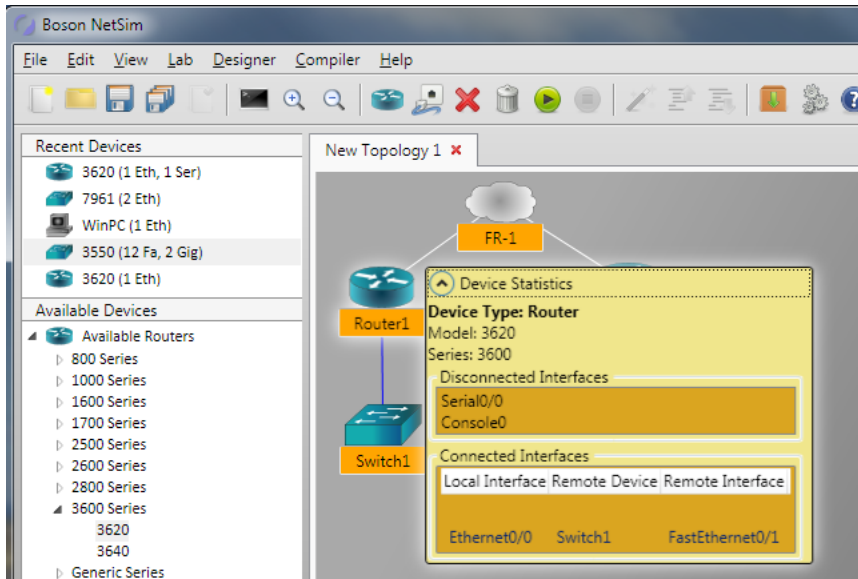
You can delete a connection by clicking the Delete Selected icon () on the toolbar. This deletes the device and associated connection(s) from the topology.

You can also clear the NetMap by clicking the Clear Topology icon () on the toolbar.

If you are creating a custom lab and compiling it for use by other NetSim users, see the Compiling a Lab section to continue creating the lab pack.

Device Statistics

You can use your mouse to hover over a device on the NetMap and then click **Device Statistics** to view statistics that are specific for that device. In the exhibit below, you can see the statistics for Router1:



Save

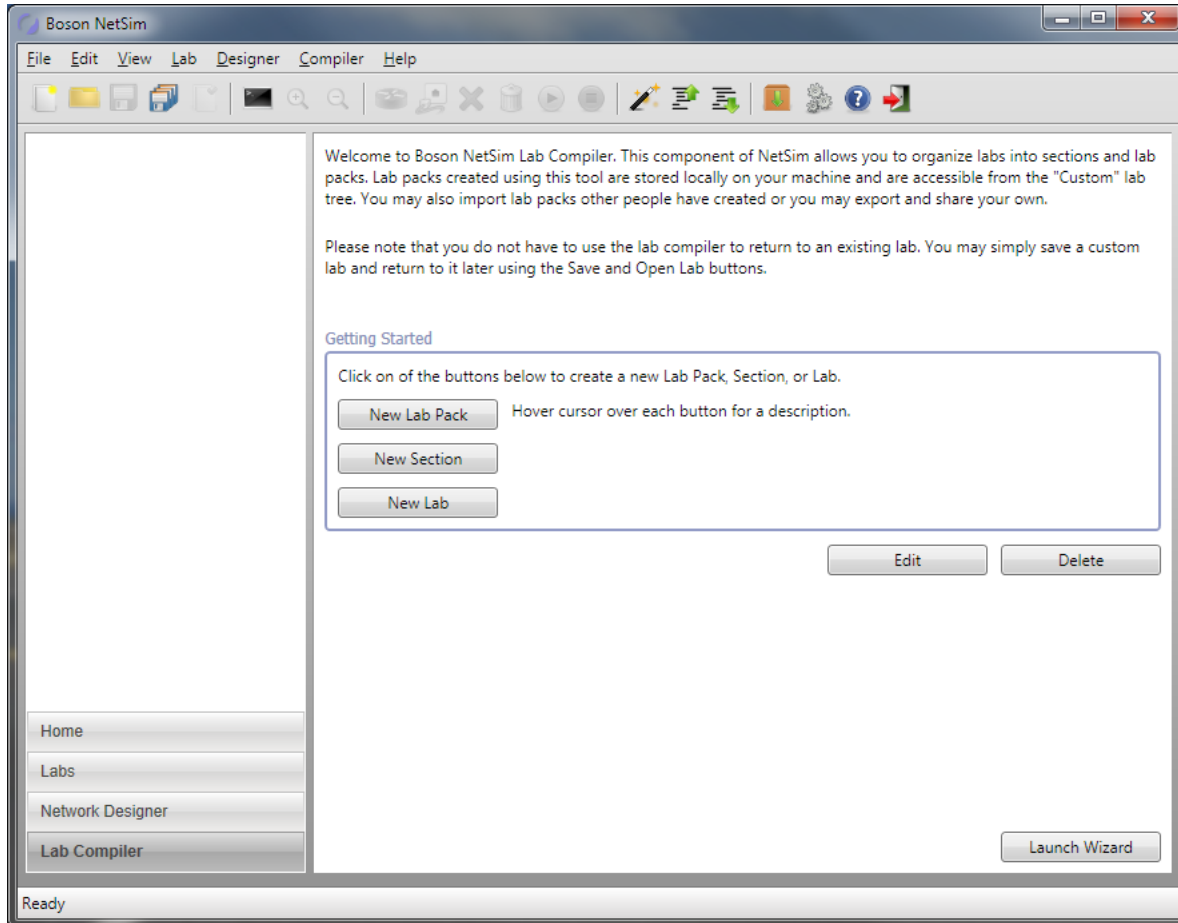
You can save your topology by clicking the Save icon () on the toolbar.

Lab Compiler

The Lab Compiler can be used to create, edit, and delete custom lab packs that contain personalized documentation, topologies, and configurations. For example, you can use the Lab Compiler to create a custom lab pack for a classroom setting and include a custom network topology, documentation, grading functionality, and beginning configurations for students to practice with. The Lab Compiler is included in every version of NetSim.

Classroom instructors commonly create custom labs that can be used both in the classroom and as homework assignments that follow the syllabus used in the course. Students can use homework assignments to practice the commands and configurations they learned in class and to prepare for the topics covered in the next day's lecture. An instructor can add multiple labs to a single lab pack, covering a variety of concepts, and use custom labs to test the students' knowledge about specific networking concepts.

The **Lab Compiler** panel is shown below:



Compiling a Lab

A completed lab must contain two files: an XPS file for the instructions and a BSN file for the completed configurations.

XPS File

On most Windows systems, an XPS file can be created from a word processing program by using the Print feature. For example, in Microsoft Word, you can create and save a Word document and then select the **Print** option. You should be able to select **Microsoft XPS Document Writer** from the **Printer Name** drop-down box. You should save this in a folder with the title of your lab and in a place you will remember. You can then save all other associated files in the same location.



BSN Topology File

A BSN file can be created within NetSim. The BSN file contains a topology and, optionally, personalized configurations. To create the topology to be contained within the BSN file, see the [Creating a New Topology](#) section. If you save the topology without modifying the configurations in the simulator, the default settings will be included on all devices.

BSN Loading Configuration File

To create a loading.bsn file, you should configure the loading configurations of the devices by performing the



following steps:

1. Ensure that the topology related to the lab is open in the Network Designer.
2. Click the Start Simulator icon () on the toolbar to run the topology in the simulator.
3. Enter the commands necessary to achieve the beginning configuration state you desire on each device.
4. Click the Save icon () on the toolbar to save the file as loading.bsn.

Note: Boson recommends saving loading BSN files with the file name “loading” and saving completed BSN files with the file name “completed” so that you can easily distinguish loading BSN files from completed BSN files.

BSN Completed Configuration File

The completed BSN file contains the completed configurations of all devices in your topology. To configure a completed BSN configuration file, perform the following steps:

1. Click the Open File icon () to open the BSN topology file you previously created.
2. Click the Start Simulator icon () on the toolbar to run the topology in the simulator.
3. Enter the commands necessary to achieve the final configuration state on each device. After a user completes your lab according to the lab instructions you provide, the user will be able to grade the commands he or she entered against the set of configurations you are currently creating.
4. Click **File > Save As** to save the completed.bsn file as a separate file from any other BSN files.

Creating a Custom Lab Pack

A lab pack is made up of one or more labs organized into sections. At least one section is required. To create a custom lab pack, you need to create a new lab pack, create a new section, and then compile a new lab. You can either use the Lab Compiler Wizard or create a lab pack manually.

Using the Lab Compiler Wizard to Create a Lab Pack

1. Click the **Launch Wizard** button at the bottom of the **Lab Compiler** pane.
2. Enter a title in the **Lab Pack Title** field, and click **Next**.
3. Enter a section title in the **Section Title** field, enter a lab title in the **Lab Title** field, and click **Next**.
4. Click the **Browse** buttons, and select the appropriate lab guide documentation (*.xps) and completed network files (*.bsn) you created and stored on your computer. Click **Next**.

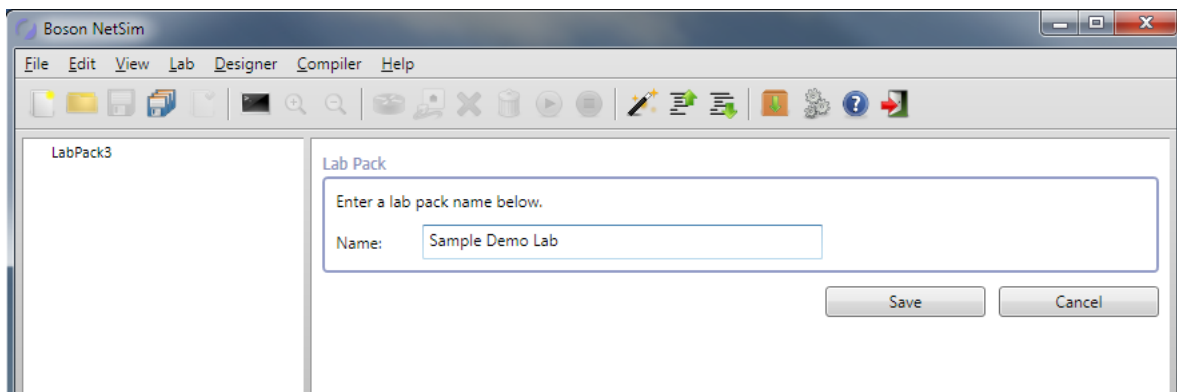
Note: To learn how to create completed network files (*.bsn), see the [BSN Completed Configuration File](#) section in this manual.

5. If desired, select a loading file (*.bsn) and click **Next**.
6. If desired, type a description and click **Next**.
7. Click **Finish** to return to the Lab Compiler main page.

After you create a lab pack by using the Lab Compiler Wizard, you should see the lab in the navigation pane. You can double-click a lab to open it, or you can click New Section or New Lab to continue creating the lab pack.

Manually Creating a Lab Pack

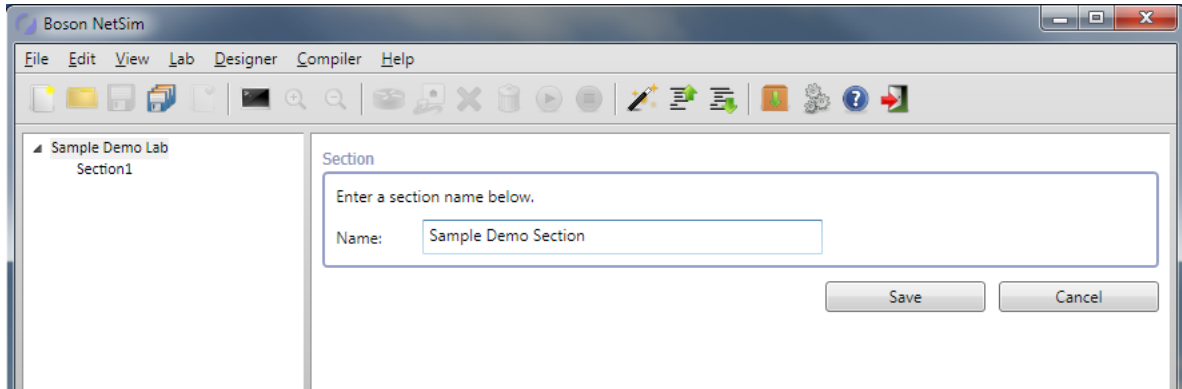
1. Click **Lab Compiler** in the navigation pane.
2. Click **New Lab Pack** in the **Getting Started** section.
3. Enter a name for the lab pack. This is a lab pack title that will be displayed in the tree.
4. Click **Save**.



Adding a Section to a Lab Pack

1. In the custom lab tree on the left, select the title of the lab pack where you want to add a new section.
2. Click **New Section** in the **Getting Started** section.
3. Enter a name for the section. This is a section title that will be displayed in the tree.

4. Click **Save**.



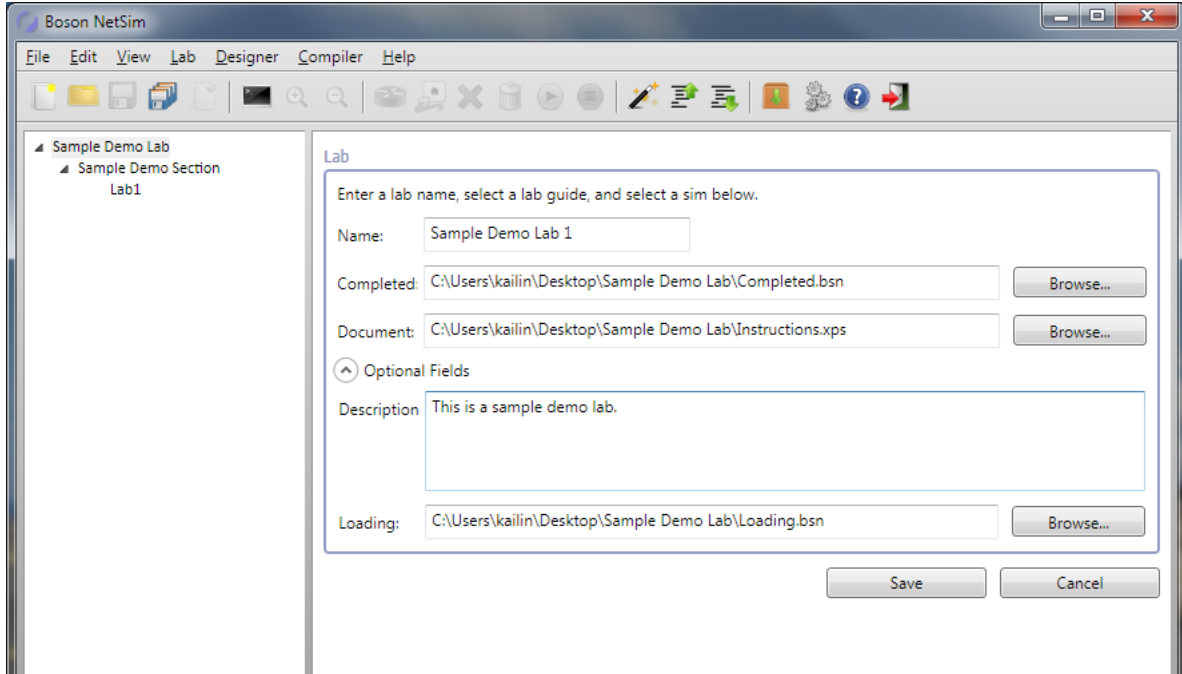
Adding a Lab to a Lab Pack Section

1. In the custom lab tree on the left, select the title of the section where you want to add a new lab.
2. Click **New Lab** in the **Getting Started** section.
3. Enter a name for the lab. This is a lab title that will be displayed in the tree.
4. Add a completed Boson Network file (.bsn).
5. Add a document. The only document files accepted are XPS documents (.xps).

You may optionally add a description and a loading BSN file to the lab. If neither file is desired, proceed to step 9.

6. Click **Optional Fields** in the **Lab** section.
7. Enter a description for the lab. A description is displayed for every lab underneath the Lab Tree.
8. Add a loading Boson Network file (.bsn). The topology in the specified loading file must match the topology in the completed file from step 4. You will receive an error message if the topologies do not match.

9. Click **Save**.



10. To add additional labs to the lab pack section, repeat steps 1 through 9 until the lab pack section is complete.
11. You can edit, add, delete, import, and export lab packs, sections, and labs with the options on the **Compiler** menu and on the Quick-Launch toolbar.

Troubleshooting

Some of my labs have locks next to them, and I can't work through them

The activation key you purchased unlocks the labs and the commands that are included with that level of NetSim 10. If a lab is unavailable with the activation key you purchased, you will see a small lock icon (🔒) next to that lab. You can purchase higher-level activation keys, which will allow you to work through additional labs plus all labs unlocked by lower-level activation keys. All demo, CCENT, CCNA, and CCNP labs are unlocked when a CCNP-level activation key is used. Additional labs are unlocked with the appropriate activation key; if you have questions about locked labs, please contact support@boson.com. Only the Demo labs are available without an activation key.

Commands seem to disappear when I press the Enter key on the number pad in Telnet mode

To ensure that the Enter key on the number pad works correctly every time you press it, you should open a command dialog box from the **Run** box in the Start menu, type **telnet**, press the Ctrl key and the right bracket key (]), type **unset crlf**, press Enter, and press Enter again. To see more information about this issue, see the related support topic on the NetSim Support page (www.boson.com/support/netsim-support-topics).

Telnet is not working on my Windows 8, Windows 7, or Windows Vista computer

Telnet is disabled by default on Windows 8, Windows 7, and Windows Vista. To enable Telnet for these operating systems, you should perform the following steps.

1. Open Control Panel from the Start menu.
2. In Control Panel, select the **Programs** or **Programs and Features** option.
3. On the **Programs** panel, click the **Turn Windows features on or off** option.
4. In the **Windows Features** dialog box, select **Telnet Client** and then click **OK**.
5. If you receive a Windows Security Alert, ensure that **Private networks, such as my home or work network** is selected and click **Allow Access**.

To see more information about this issue, see the related support topic on the NetSim Support page (www.boson.com/support/netsim-support-topics).

The Custom tab is empty

You will see labs on the **Custom** tab of the **Labs** panel only if you have imported labs you received from another NetSim user or from an instructor or if you have created your own labs. To find out how to import labs or how to create your own labs, see the [Compiling a Lab](#) section of this manual.