



## CLASSIC COLLECTION

# 770 S Series -115V

**Seating:** 5 adults with lounge

**Dimensions:** 78" x 78" x 36"

**Water Capacity:** 317 gallons, 1,200 litres

### FEATURES

- 26 Two-Tone Hydrotherapy Jets
- Two-Tone Air Controls
- LED Multi-Colour Safety Light
- LED Illuminated Waterfall
- LED Perimeter Lighting
- LED Exterior Lighting with Deluxe Corners
- Ozone Ready
- Black WeatherShield Cover (5" - 3" Taper)
- Thru Wall Drain

### EQUIPMENT

- Factory Installed 110V GFCI Plug
- User-Friendly Balboa Controls
- One 1.5HPR Dual Speed Jet Pump
- 1kW Heating System
- 100 Sq. Ft. Filtration System

### STRUCTURE

- Bottom Tray
- Galvanized SureSteel Support Structure
- Polysteel Exterior Cabinetry
- GreenGuard Rockwool Insulation

### OPTIONAL FEATURES

- Deluxe Acrylic Colour Upgrade
- Factory Installed Ozone
- 2 Speaker Bluetooth Audio System
- Control My Spa Systems Controller

### STANDARD ACRYLIC COLOUR



STERLING  
MARBLE

### DELUXE ACRYLIC COLOURS



TUSCAN  
SUN



MIDNIGHT  
CANYON



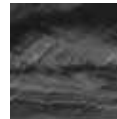
GLACIER  
MOUNTAIN



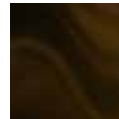
SMOKY  
MOUNTAIN



\*WHISPERING  
WINDS



\*STORM  
CLOUDS



\*MAYAN  
COPPER

*\*While Supplies Last*

### CABINET COLOURS



GREY



COFFEE



BLACK



[www.poolplace.ca](http://www.poolplace.ca)

[info@poolplace.ca](mailto:info@poolplace.ca)

Call 905.957.7100

Text 905.701.0100

\*Dimensions may vary. Leisure Manufacturing Inc., may make product modifications and enhancements. Specifications including dimensions, weight, volume and configuration will vary and are subject to change without notice. Product and colour images may be different from shown. International products may be configured differently to meet local electrical requirements. Spas ordered with optional features may take additional time for delivery.



## CLASSIC COLLECTION

### 770 S Series -230V

**Seating:** 5 adults with lounge  
**Dimensions:** 78" x 78" x 36"  
**Water Capacity:** 317 gallons, 1,200 litres

### FEATURES

- 26 Two-Tone Hydrotherapy Jets
- Two-Tone Air Controls
- LED Multi-Colour Safety Light
- LED Illuminated Waterfall
- LED Perimeter Lighting
- LED Exterior Lighting with Deluxe Corners
- Ozone Ready
- Black WeatherShield Cover (5" - 3" Taper)
- Thru Wall Drain

### EQUIPMENT

- User-Friendly Balboa Controls
- One 4.5HPR Dual Speed Jet Pump
- 4kW Heating System
- 100 Sq. Ft. Filtration System

### STRUCTURE

- Bottom Tray
- Galvanized SureSteel Support Structure
- Polysteel Exterior Cabinetry
- GreenGuard Rockwool Insulation

### OPTIONAL FEATURES

- Deluxe Acrylic Colour Upgrade
- Factory Installed Ozone
- UV/O<sub>3</sub> Deluxe Water Management System
- 2 Speaker Bluetooth Audio System
- Control My Spa Systems Controller



### STANDARD ACRYLIC COLOUR



STERLING  
MARBLE

### DELUXE ACRYLIC COLOURS



TUSCAN  
SUN



MIDNIGHT  
CANYON



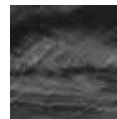
GLACIER  
MOUNTAIN



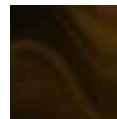
SMOKY  
MOUNTAIN



\*WHISPERING  
WINDS



\*STORM  
CLOUDS



\*MAYAN  
COPPER

*\*While Supplies Last*

### CABINET COLOURS



GREY



COFFEE



BLACK



[www.poolplace.ca](http://www.poolplace.ca)

[info@poolplace.ca](mailto:info@poolplace.ca)

Call 905.957.7100

Text 905.701.0100

\*Dimensions may vary. Leisure Manufacturing Inc., may make product modifications and enhancements. Specifications including dimensions, weight, volume and configuration will vary and are subject to change without notice. Product and colour images may be different from shown. International products may be configured differently to meet local electrical requirements. Spas ordered with optional features may take additional time for delivery.



## CLASSIC COLLECTION

# 780 S Series -115V

**Seating:** 6 adults

**Dimensions:** 78" x 78" x 36"

**Water Capacity:** 335 gallons, 1,268 litres

### FEATURES

- 26 Two-Tone Hydrotherapy Jets
- Two-Tone Air Controls
- LED Multi-Colour Safety Light
- LED Illuminated Waterfall
- LED Perimeter Lighting
- LED Exterior Lighting with Deluxe Corners
- Ozone Ready
- Black WeatherShield Cover (5" - 3" Taper)
- Thru Wall Drain

### EQUIPMENT

- Factory Installed 110V GFCI Plug
- User-Friendly Balboa Controls
- One 1.5HPR Dual Speed Jet Pump
- 1kW Heating System
- 100 Sq. Ft. Filtration System

### STRUCTURE

- Bottom Tray
- Galvanized SureSteel Support Structure
- Polysteel Exterior Cabinetry
- GreenGuard Rockwool Insulation

### OPTIONAL FEATURES

- Deluxe Acrylic Colour Upgrade
- Factory Installed Ozone
- 2 Speaker Bluetooth Audio System
- Control My Spa Systems Controller

### STANDARD ACRYLIC COLOUR



STERLING  
MARBLE

### DELUXE ACRYLIC COLOURS



TUSCAN  
SUN



MIDNIGHT  
CANYON



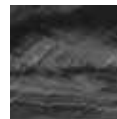
GLACIER  
MOUNTAIN



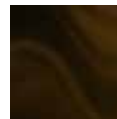
SMOKY  
MOUNTAIN



\*WHISPERING  
WINDS



\*STORM  
CLOUDS



\*MAYAN  
COPPER

*\*While Supplies Last*

### CABINET COLOURS



GREY



COFFEE



BLACK



[www.poolplace.ca](http://www.poolplace.ca)

[info@poolplace.ca](mailto:info@poolplace.ca)

Call 905.957.7100

Text 905.701.0100

\*Dimensions may vary. Leisure Manufacturing Inc., may make product modifications and enhancements. Specifications including dimensions, weight, volume and configuration will vary and are subject to change without notice. Product and colour images may be different from shown. International products may be configured differently to meet local electrical requirements. Spas ordered with optional features may take additional time for delivery.



## CLASSIC COLLECTION

# 780 S Series -230V

**Seating:** 6 adults

**Dimensions:** 78" x 78" x 36"

**Water Capacity:** 335 gallons, 1,268 litres

### FEATURES

- 26 Two-Tone Hydrotherapy Jets
- Two-Tone Air Controls
- LED Multi-Colour Safety Light
- LED Illuminated Waterfall
- LED Perimeter Lighting
- LED Exterior Lighting with Deluxe Corners
- Ozone Ready
- Black WeatherShield Cover (5" - 3" Taper)
- Thru Wall Drain

### EQUIPMENT

- User-Friendly Balboa Controls
- One 4.5HPR Dual Speed Jet Pump
- 4kW Heating System
- 100 Sq. Ft. Filtration System

### STRUCTURE

- Bottom Tray
- Galvanized SureSteel Support Structure
- Polysteel Exterior Cabinetry
- GreenGuard Rockwool Insulation

### OPTIONAL FEATURES

- Deluxe Acrylic Colour Upgrade
- Factory Installed Ozone
- UV/O<sub>3</sub> Deluxe Water Management System
- 2 Speaker Bluetooth Audio System
- Control My Spa Systems Controller

### STANDARD ACRYLIC COLOUR



STERLING  
MARBLE

### DELUXE ACRYLIC COLOURS



TUSCAN  
SUN



MIDNIGHT  
CANYON



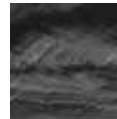
GLACIER  
MOUNTAIN



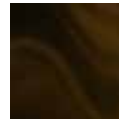
SMOKY  
MOUNTAIN



\*WHISPERING  
WINDS



\*STORM  
CLOUDS



\*MAYAN  
COPPER

*\*While Supplies Last*

### CABINET COLOURS



GREY



COFFEE



BLACK



**sunrise spas**   
classic collection



[www.poolplace.ca](http://www.poolplace.ca)

[info@poolplace.ca](mailto:info@poolplace.ca)

Call 905.957.7100

Text 905.701.0100

\*Dimensions may vary. Leisure Manufacturing Inc., may make product modifications and enhancements. Specifications including dimensions, weight, volume and configuration will vary and are subject to change without notice. Product and colour images may be different from shown. International products may be configured differently to meet local electrical requirements. Spas ordered with optional features may take additional time for delivery.



## CLASSIC COLLECTION

### 870 S Series

**Seating:** 6 adults, with lounge

**Dimensions:** 84" x 84" x 36"

**Water Capacity:** 392 gallons, 1,484 litres

### FEATURES

- 50 Two-Tone Hydrotherapy Jets
- Two-Tone Air Controls
- LED Multi-Colour Safety Light
- LED Illuminated Waterfall
- LED Perimeter Lighting
- LED Exterior Lighting with Deluxe Corners
- Ozone Ready
- Black WeatherShield Cover (5" - 3" Taper)
- Thru Wall Drain

### EQUIPMENT

- User-Friendly Balboa Controls
- Two 5.0SPL Dual Speed Jet Pumps
- 4kW Heating System
- 100 Sq. Ft. Filtration System

### STRUCTURE

- Bottom Tray
- Galvanized SureSteel Support Structure
- Polysteel Exterior Cabinetry
- GreenGuard Rockwool Insulation

### OPTIONAL FEATURES

- Deluxe Acrylic Colour Upgrade
- Factory Installed Ozone
- UV/O<sub>3</sub> Deluxe Water Management System
- 2 Speaker Bluetooth Audio System
- Control My Spa Systems Controller



### STANDARD ACRYLIC COLOUR



STERLING  
MARBLE

### DELUXE ACRYLIC COLOURS



TUSCAN  
SUN



MIDNIGHT  
CANYON



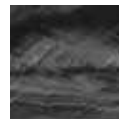
GLACIER  
MOUNTAIN



SMOKY  
MOUNTAIN



\*WHISPERING  
WINDS



\*STORM  
CLOUDS



\*MAYAN  
COPPER

*\*While Supplies Last*

### CABINET COLOURS



GREY



COFFEE



BLACK



[www.poolplace.ca](http://www.poolplace.ca)

[info@poolplace.ca](mailto:info@poolplace.ca)

Call 905.957.7100

Text 905.701.0100



## CLASSIC COLLECTION

### 880 S Series

**Seating:** 6 adults

**Dimensions:** 84" x 84" x 36"

**Water Capacity:** 374 gallons, 1,416 litres

### FEATURES

- 50 Two-Tone Hydrotherapy Jets
- Two-Tone Air Controls
- LED Multi-Colour Safety Light
- LED Illuminated Waterfall
- LED Perimeter Lighting
- LED Exterior Lighting with Deluxe Corners
- Ozone Ready
- Black WeatherShield Cover (5" - 3" Taper)
- Thru Wall Drain

### EQUIPMENT

- User-Friendly Balboa Controls
- Two 5.0SPL Dual Speed Jet Pumps
- 4kW Heating System
- 100 Sq. Ft. Filtration System

### STRUCTURE

- Bottom Tray
- Galvanized SureSteel Support Structure
- Polysteel Exterior Cabinetry
- GreenGuard Rockwool Insulation

### OPTIONAL FEATURES

- Deluxe Acrylic Colour Upgrade
- Factory Installed Ozone
- UV/O<sub>3</sub> Deluxe Water Management System
- 2 Speaker Bluetooth Audio System
- Control My Spa Systems Controller

### STANDARD ACRYLIC COLOUR



STERLING  
MARBLE

### DELUXE ACRYLIC COLOURS



TUSCAN  
SUN



MIDNIGHT  
CANYON



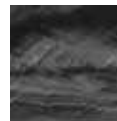
GLACIER  
MOUNTAIN



SMOKY  
MOUNTAIN



\*WHISPERING  
WINDS



\*STORM  
CLOUDS



\*MAYAN  
COPPER

*\*While Supplies Last*

### CABINET COLOURS



GREY



COFFEE



BLACK



[www.poolplace.ca](http://www.poolplace.ca)

[info@poolplace.ca](mailto:info@poolplace.ca)

Call 905.957.7100

Text 905.701.0100

\*Dimensions may vary. Leisure Manufacturing Inc., may make product modifications and enhancements. Specifications including dimensions, weight, volume and configuration will vary and are subject to change without notice. Product and colour images may be different from shown. International products may be configured differently to meet local electrical requirements. Spas ordered with optional features may take additional time for delivery.



## CLASSIC COLLECTION

### 970 S Series

**Seating:** 6 adults with lounge

**Dimensions:** 90" x 94" x 36"

**Water Capacity:** 455 gallons, 1,722 litres

#### FEATURES

- 52 Two-Tone Hydrotherapy Jets
- Two-Tone Air Controls
- LED Multi-Colour Safety Light
- LED Illuminated Waterfall
- LED Perimeter Lighting
- LED Exterior Lighting with Deluxe Corners
- Ozone Ready
- Black WeatherShield Cover (5" - 3" Taper)
- Thru Wall Drain

#### EQUIPMENT

- User-Friendly Balboa Controls
- Two 5.0SPL Dual Speed Jet Pumps
- 4kW Heating System
- 100 Sq. Ft. Filtration System

#### STRUCTURE

- Bottom Tray
- Galvanized SureSteel Support Structure
- Polysteel Exterior Cabinetry
- GreenGuard Rockwool Insulation

#### OPTIONAL FEATURES

- Deluxe Acrylic Colour Upgrade
- Factory Installed Ozone
- UV/O<sub>3</sub> Deluxe Water Management System
- 4 Speaker Bluetooth Audio System
- Control My Spa Systems Controller

#### STANDARD ACRYLIC COLOUR



STERLING  
MARBLE

#### DELUXE ACRYLIC COLOURS



TUSCAN  
SUN



MIDNIGHT  
CANYON



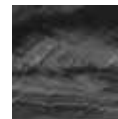
GLACIER  
MOUNTAIN



SMOKY  
MOUNTAIN



\*WHISPERING  
WINDS



\*STORM  
CLOUDS



\*MAYAN  
COPPER

*\*While Supplies Last*

#### CABINET COLOURS



GREY



COFFEE



BLACK



[www.poolplace.ca](http://www.poolplace.ca)

[info@poolplace.ca](mailto:info@poolplace.ca)

Call 905.957.7100

Text 905.701.0100

\*Dimensions may vary. Leisure Manufacturing Inc., may make product modifications and enhancements. Specifications including dimensions, weight, volume and configuration will vary and are subject to change without notice. Product and colour images may be different from shown. International products may be configured differently to meet local electrical requirements. Spas ordered with optional features may take additional time for delivery.



## CLASSIC COLLECTION

# 980 S Series

**Seating:** 6 adults

**Dimensions:** 90" x 94" x 36"

**Water Capacity:** 463 gallons, 1,753 litres

### FEATURES

- 61 Two-Tone Hydrotherapy Jets
- Two-Tone Air Controls
- LED Multi-Colour Safety Light
- LED Illuminated Waterfall
- LED Perimeter Lighting
- LED Exterior Lighting with Deluxe Corners
- Ozone Ready
- Black WeatherShield Cover (5" - 3" Taper)
- Thru Wall Drain

### EQUIPMENT

- User-Friendly Balboa Controls
- Two 5.0SPL Dual Speed Jet Pumps
- 4kW Heating System
- 100 Sq. Ft. Filtration System

### STRUCTURE

- Bottom Tray
- Galvanized SureSteel Support Structure
- Polysteel Exterior Cabinetry
- GreenGuard Rockwool Insulation

### OPTIONAL FEATURES

- Deluxe Acrylic Colour Upgrade
- Factory Installed Ozone
- UV/O<sub>3</sub> Deluxe Water Management System
- 4 Speaker Bluetooth Audio System
- Control My Spa Systems Controller

### STANDARD ACRYLIC COLOUR



STERLING  
MARBLE

### DELUXE ACRYLIC COLOURS



TUSCAN  
SUN



MIDNIGHT  
CANYON



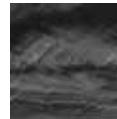
GLACIER  
MOUNTAIN



SMOKY  
MOUNTAIN



\*WHISPERING  
WINDS



\*STORM  
CLOUDS



\*MAYAN  
COPPER

*\*While Supplies Last*

### CABINET COLOURS



GREY



COFFEE



BLACK



**sunrise spas**   
classic collection



[www.poolplace.ca](http://www.poolplace.ca)

[info@poolplace.ca](mailto:info@poolplace.ca)

Call 905.957.7100

Text 905.701.0100

\*Dimensions may vary. Leisure Manufacturing Inc., may make product modifications and enhancements. Specifications including dimensions, weight, volume and configuration will vary and are subject to change without notice. Product and colour images may be different from shown. International products may be configured differently to meet local electrical requirements. Spas ordered with optional features may take additional time for delivery.





# CLASSIC COLLECTION

## 870 SX Series

**Seating:** 6 adults, with lounge  
**Dimensions:** 84" x 84" x 36"  
**Water Capacity:** 392 gallons, 1,484 litres

### FEATURES

- 50 Two-Tone Stainless Steel Jets
- Two-Tone Air Controls
- LED Multi-Colour Safety Light
- LED Illuminated Waterfall
- LED Illuminated Deck Controls
- LED Perimeter Lighting
- LED Exterior Lighting with Deluxe Corners
- UV/O<sub>3</sub> Deluxe Water Management System
- Black WeatherShield Cover (5" - 3" Taper)
- Thru Wall Drain

### EQUIPMENT

- User-Friendly Balboa Controls
- Two 5.0SPL Dual Speed Jet Pumps
- 4kW Heating System
- 100 Sq. Ft. Filtration System

### STRUCTURE

- Bottom Tray
- Galvanized SureSteel Support Structure
- Polysteel Exterior Cabinetry
- GreenGuard Rockwool Insulation

### OPTIONAL FEATURES

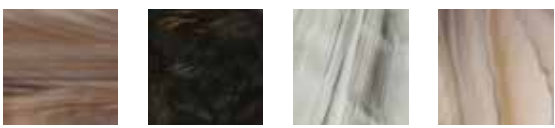
- Deluxe Acrylic Colour Upgrade
- 2 Speaker Bluetooth Audio System
- Control My Spa Systems Controller

### STANDARD ACRYLIC COLOUR

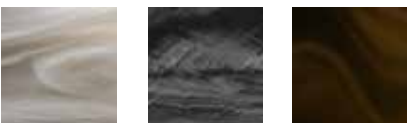


STERLING MARBLE

### DELUXE ACRYLIC COLOURS



TUSCAN SUN      MIDNIGHT CANYON      GLACIER MOUNTAIN      SMOKY MOUNTAIN



\*WHISPERING WINDS      \*STORM CLOUDS      \*MAYAN COPPER

*\*While Supplies Last*

### CABINET COLOURS



GREY      COFFEE      BLACK



[www.poolplace.ca](http://www.poolplace.ca)  
[info@poolplace.ca](mailto:info@poolplace.ca)

Call 905.957.7100      Text 905.701.0100

\*Dimensions may vary. Leisure Manufacturing Inc., may make product modifications and enhancements. Specifications including dimensions, weight, volume and configuration will vary and are subject to change without notice. Product and colour images may be different from shown. International products may be configured differently to meet local electrical requirements. Spas ordered with optional features may take additional time for delivery.



## CLASSIC COLLECTION

### 880 SX Series

**Seating:** 6 adults

**Dimensions:** 84" x 84" x 36"

**Water Capacity:** 374 gallons, 1,416 litres

### FEATURES

- 50 Two-Tone Stainless Steel Jets
- Two-Tone Air Controls
- LED Multi-Colour Safety Light
- LED Illuminated Waterfall
- LED Illuminated Deck Controls
- LED Perimeter Lighting
- LED Exterior Lighting with Deluxe Corners
- UV/O<sub>3</sub> Deluxe Water Management System
- Black WeatherShield Cover (5" - 3" Taper)
- Thru Wall Drain

### EQUIPMENT

- User-Friendly Balboa Controls
- Two 5.0SPL Dual Speed Jet Pumps
- 4kW Heating System
- 100 Sq. Ft. Filtration System

### STRUCTURE

- Bottom Tray
- Galvanized SureSteel Support Structure
- Polysteel Exterior Cabinetry
- GreenGuard Rockwool Insulation

### OPTIONAL FEATURES

- Deluxe Acrylic Colour Upgrade
- 2 Speaker Bluetooth Audio System
- Control My Spa Systems Controller

### STANDARD ACRYLIC COLOUR



STERLING  
MARBLE

### DELUXE ACRYLIC COLOURS



TUSCAN  
SUN



MIDNIGHT  
CANYON



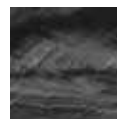
GLACIER  
MOUNTAIN



SMOKY  
MOUNTAIN



\*WHISPERING  
WINDS



\*STORM  
CLOUDS



\*MAYAN  
COPPER

*\*While Supplies Last*

### CABINET COLOURS



GREY



COFFEE



BLACK



**sunrise spas**   
classic collection



[www.poolplace.ca](http://www.poolplace.ca)

[info@poolplace.ca](mailto:info@poolplace.ca)

Call 905.957.7100

Text 905.701.0100

\*Dimensions may vary. Leisure Manufacturing Inc., may make product modifications and enhancements. Specifications including dimensions, weight, volume and configuration will vary and are subject to change without notice. Product and colour images may be different from shown. International products may be configured differently to meet local electrical requirements. Spas ordered with optional features may take additional time for delivery.



## CLASSIC COLLECTION

### 970 SX Series

**Seating:** 6 adults with lounge

**Dimensions:** 90" x 94" x 36"

**Water Capacity:** 455 gallons, 1,722 litres

### FEATURES

- 52 Two-Tone Stainless Steel Jets
- Two-Tone Air Controls
- LED Multi-Colour Safety Light
- LED Illuminated Waterfall
- LED Illuminated Deck Controls
- LED Perimeter Lighting
- LED Exterior Lighting with Deluxe Corners
- UV/O<sub>3</sub> Deluxe Water Management System
- Black WeatherShield Cover (5" - 3" Taper)
- Thru Wall Drain

### EQUIPMENT

- User-Friendly Balboa Controls
- Two 5.0SPL Dual Speed Jet Pumps
- 4kW Heating System
- 100 Sq. Ft. Filtration System

### STRUCTURE

- Bottom Tray
- Galvanized SureSteel Support Structure
- Polysteel Exterior Cabinetry
- GreenGuard Rockwool Insulation

### OPTIONAL FEATURES

- Deluxe Acrylic Colour Upgrade
- 4 Speaker Bluetooth Audio System
- Control My Spa Systems Controller



### STANDARD ACRYLIC COLOUR



STERLING  
MARBLE

### DELUXE ACRYLIC COLOURS



TUSCAN  
SUN



MIDNIGHT  
CANYON



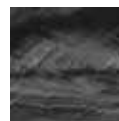
GLACIER  
MOUNTAIN



SMOKY  
MOUNTAIN



\*WHISPERING  
WINDS



\*STORM  
CLOUDS



\*MAYAN  
COPPER

*\*While Supplies Last*

### CABINET COLOURS



GREY



COFFEE



BLACK



[www.poolplace.ca](http://www.poolplace.ca)

[info@poolplace.ca](mailto:info@poolplace.ca)

Call 905.957.7100

Text 905.701.0100



## CLASSIC COLLECTION

### 980 SX Series

**Seating:** 6 adults

**Dimensions:** 90" x 94" x 36"

**Water Capacity:** 463 gallons, 1,753 litres

#### FEATURES

- 61 Two-Tone Stainless Steel Jets
- Two-Tone Air Controls
- LED Multi-Colour Safety Light
- LED Illuminated Waterfall
- LED Illuminated Deck Controls
- LED Perimeter Lighting
- LED Exterior Lighting with Deluxe Corners
- UV/O<sub>3</sub> Deluxe Water Management System
- Black WeatherShield Cover (5" - 3" Taper)
- Thru Wall Drain

#### EQUIPMENT

- User-Friendly Balboa Controls
- Two 5.0SPL Dual Speed Jet Pumps
- 4kW Heating System
- 100 Sq. Ft. Filtration System

#### STRUCTURE

- Bottom Tray
- Galvanized SureSteel Support Structure
- Polysteel Exterior Cabinetry
- GreenGuard Rockwool Insulation

#### OPTIONAL FEATURES

- Deluxe Acrylic Colour Upgrade
- 4 Speaker Bluetooth Audio System
- Control My Spa Systems Controller

#### STANDARD ACRYLIC COLOUR



STERLING  
MARBLE

#### DELUXE ACRYLIC COLOURS



TUSCAN  
SUN



MIDNIGHT  
CANYON



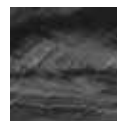
GLACIER  
MOUNTAIN



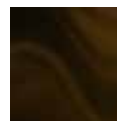
SMOKY  
MOUNTAIN



\*WHISPERING  
WINDS



\*STORM  
CLOUDS



\*MAYAN  
COPPER

*\*While Supplies Last*

#### CABINET COLOURS



GREY



COFFEE



BLACK



[www.poolplace.ca](http://www.poolplace.ca)

[info@poolplace.ca](mailto:info@poolplace.ca)

Call 905.957.7100

Text 905.701.0100

\*Dimensions may vary. Leisure Manufacturing Inc., may make product modifications and enhancements. Specifications including dimensions, weight, volume and configuration will vary and are subject to change without notice. Product and colour images may be different from shown. International products may be configured differently to meet local electrical requirements. Spas ordered with optional features may take additional time for delivery.