

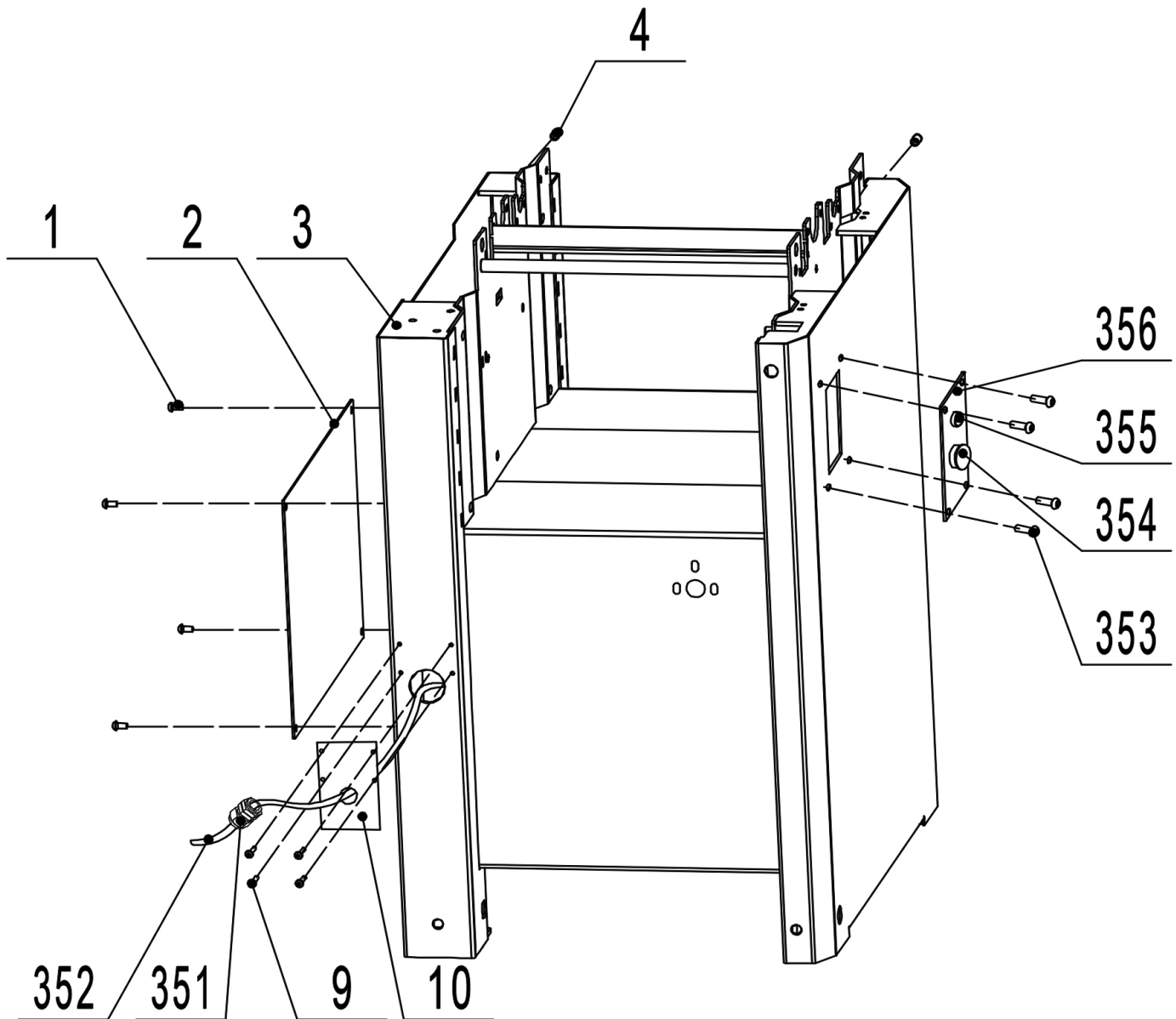
# 12" Planer / Jointer with Helical Cutterhead



## Parts List

# PARTS EXPLOSION & PARTS LIST

## CABINET ASSEMBLY

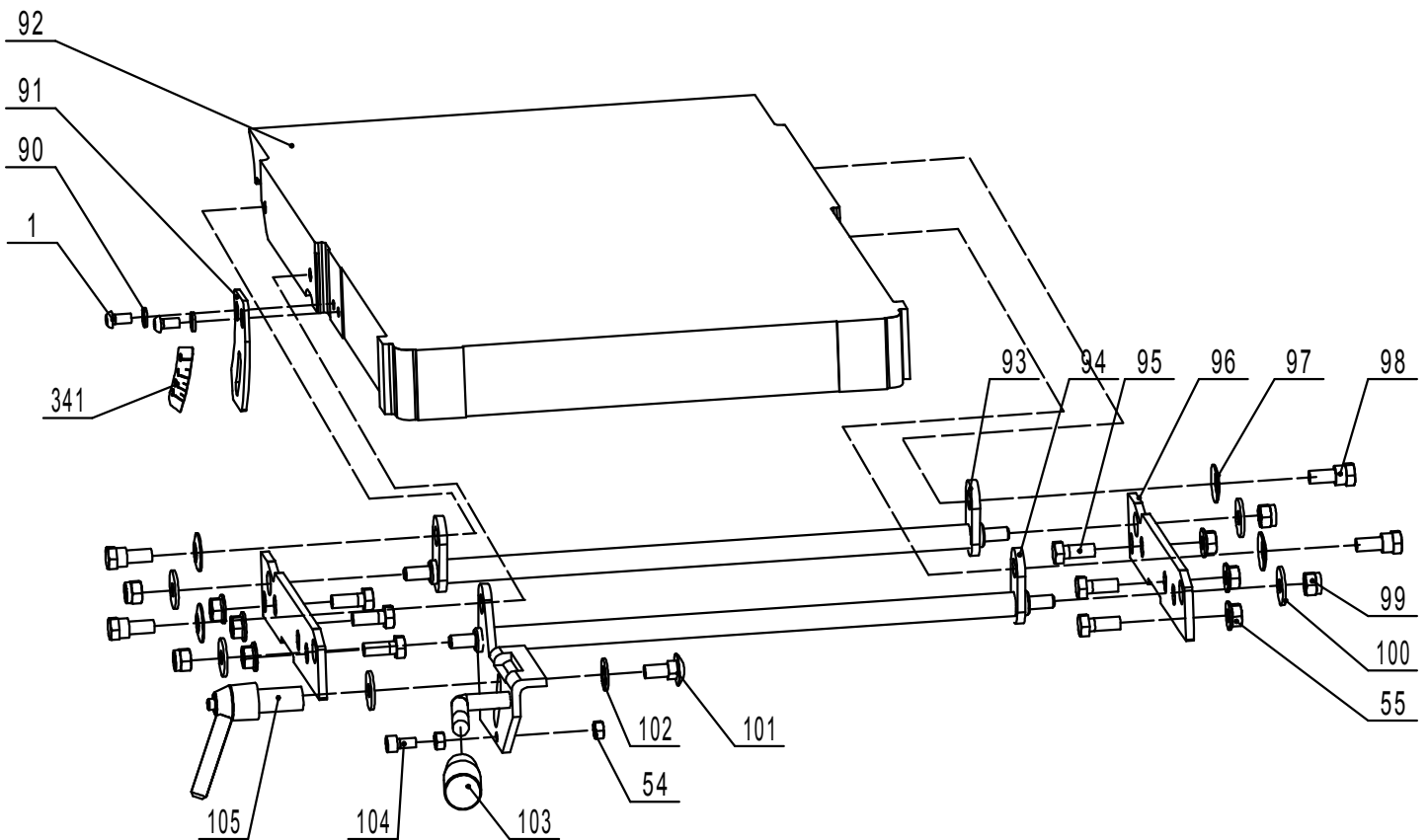


KEY NO.	DESCRIPTION	MFG. PART NO.	KEY NO.	DESCRIPTION	MFG. PART NO.
1	Pan Head Screw M6x12	P25-200H-1	351	Cable Clamp	P25-200H-351
2	Cover Plate	P25-200H-2	352	Power Cable	P25-200H-352
3	Cabinet	P25-200H-3	353	Pan Head Screw M4x6	P25-200H-353
4	Rivet Nut M6x15	P25-200H-4	354	OFF Switch	P25-200H-354
9	Pan Head Screw M6x12	P25-200H-9	355	ON Switch	P25-200H-355
10	Plate	P25-200H-10	356	Switch Box Plate	P25-200H-356

**NOTE:** The specifications, photographs, drawings and information in this manual represent the current model when the manual was prepared. Changes and improvements may be made at any time, with no obligation on the part of Rikon Power Tools, Inc. to modify previously delivered units. Reasonable care has been taken to ensure that the information in this manual is correct, to provide you with the guidelines for the proper safety, assembly and operation of this machine.

# PARTS EXPLOSION & PARTS LIST

## INFEED TABLE ASSEMBLY



**KEY NO. DESCRIPTION MFG. PART NO.**

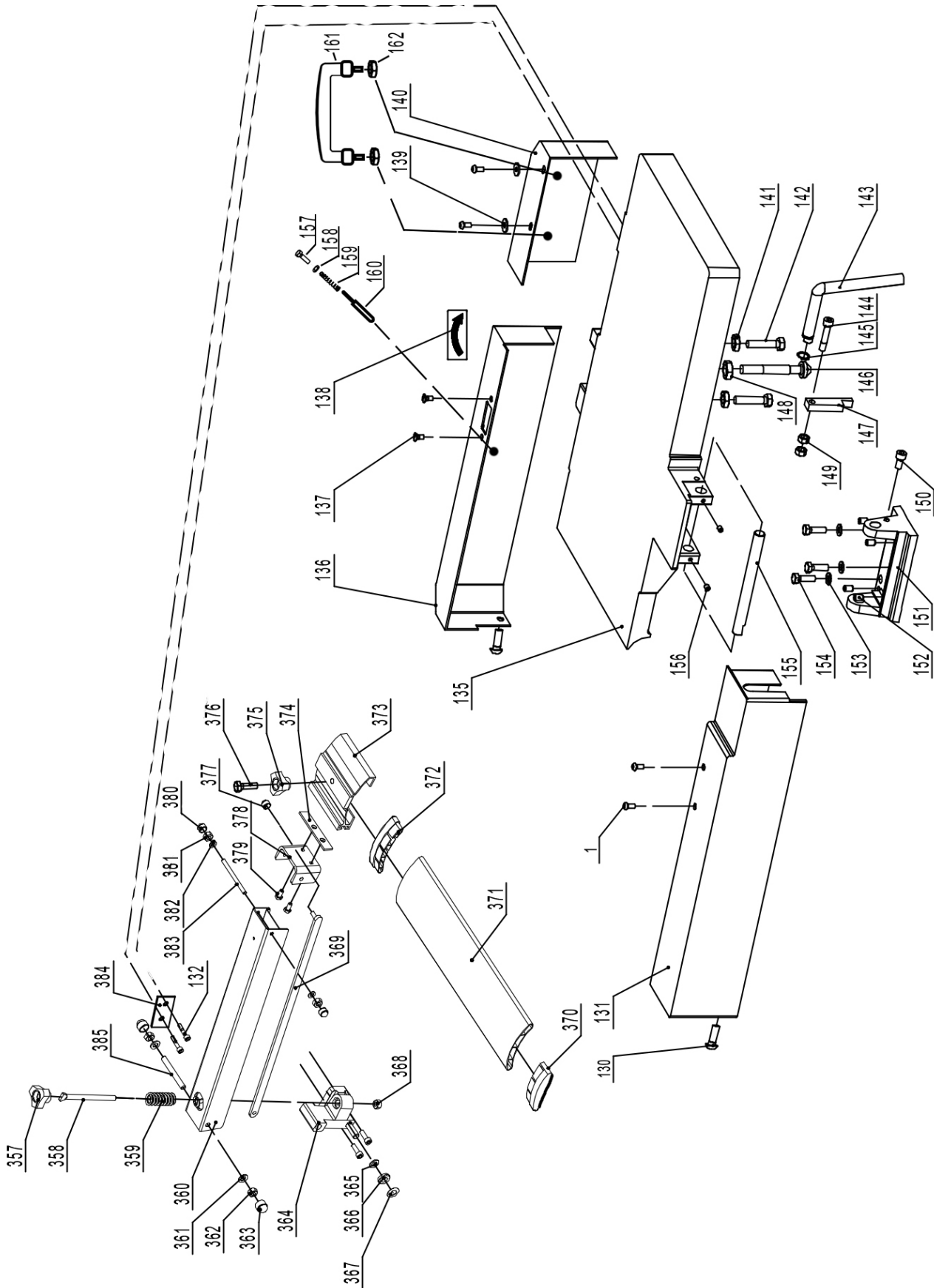
**KEY NO. DESCRIPTION MFG. PART NO.**

1	Screw M6x12	P25-200H-1	97	Spring Washer	P25-200H-97
54	Nut	P25-200H-54	98	Carriage Bolt	P25-200H-98
55	Flange Nut	P25-200H-55	99	Lock Nut M8	P25-200H-99
90	Flat Washer	P25-200H-90	100	Flat Washer	P25-200H-100
91	Scale Plate	P25-200H-91	101	Carriage Bolt	P25-200H-101
92	Infeed Table	P25-200H-92	102	Flat Washer	P25-200H-102
93	Front Shaft	P25-200H-93	103	Knob	P25-200H-103
94	Handle Shaft	P25-200H-94	104	Hex Socket Head Screw	P25-200H-104
95	Hex Bolt	P25-200H-95	105	Locking Handle	P25-200H-105
96	Lift Bracket	P25-200H-96	341	Scale	P25-200H-341

**NOTE:** Please reference the Manufacturer's Part Number when calling for Replacement Parts.  
For Parts under Warranty, the Serial Number of your machine is required.

# PARTS EXPLOSION

## OUTFEED TABLE ASSEMBLY



**NOTE:** Please reference the Manufacturer's Part Number when calling for Replacement Parts.  
For Parts under Warranty, the Serial Number of your machine is required.

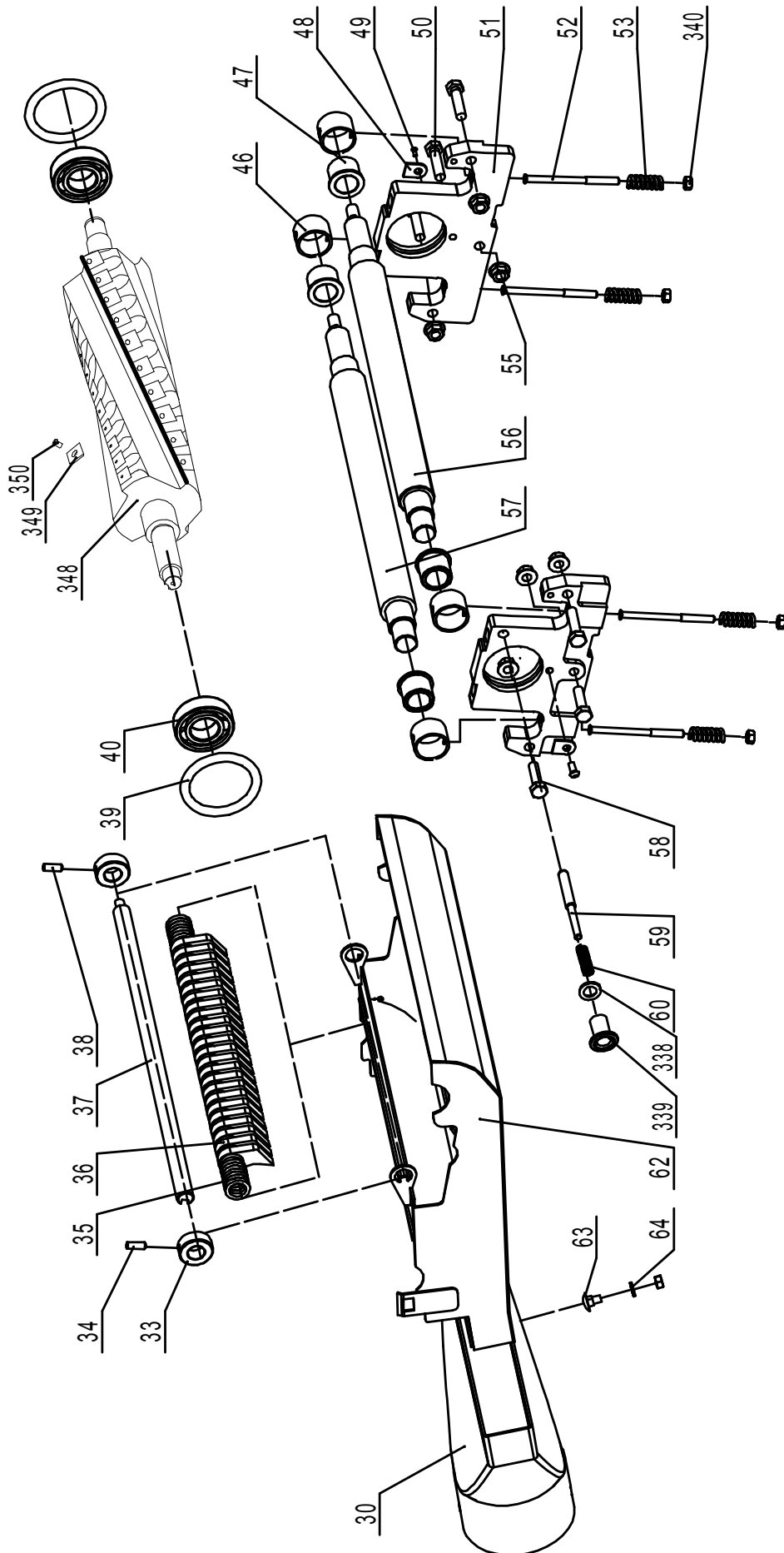
# PARTS LIST

## OUTFEED TABLE ASSEMBLY

KEY NO.	DESCRIPTION	MFG. PART NO.	KEY NO.	DESCRIPTION	MFG. PART NO.
1	Screw M6x12	P25-200H-1	162	Nut	P25-200H-162
130	Screw M6x16	P25-200H-130	357	Handle	P25-200H-357
131	Right Cover	P25-200H-131	358	Threaded Rod	P25-200H-358
132	Screw M6x40	P25-200H-132	359	Spring	P25-200H-359
135	Infeed Table	P25-200H-135	360	Arm	P25-200H-360
136	Left Cover	P25-200H-136	361	Washer	P25-200H-361
137	Screw M6x12	P25-200H-137	362	Hex Nut M8	P25-200H-362
138	Rotation Label	P25-200H-138	363	Nut Cap	P25-200H-363
139	Flat Washer	P25-200H-139	364	Bracket	P25-200H-364
140	Left Bracket	P25-200H-140	365	Washer	P25-200H-365
141	Hex Nut	P25-200H-141	366	Washer	P25-200H-366
142	Special Bolt	P25-200H-142	367	Washer	P25-200H-367
143	Rear Handle	P25-200H-143	368	Hex Nut M8	P25-200H-368
144	Hex Socket Head Screw	P25-200H-144	369	Draw Bar	P25-200H-369
145	Retaining Ring	P25-200H-145	370	End Cap	P25-200H-370
146	Locking Table Bar	P25-200H-146	371	Cutterhead Guard	P25-200H-371
147	Bracket	P25-200H-147	372	End Cap	P25-200H-372
148	Hex Nut M12	P25-200H-148	373	Sliding Sleeve	P25-200H-373
149	Hex Nut M8	P25-200H-149	374	Locking Bracket	P25-200H-374
150	Hex Socket Head Screw	P25-200H-150	375	Handle	P25-200H-375
151	Mounting Base	P25-200H-151	376	Nylon Screw	P25-200H-376
152	Hex Socket Set Screw	P25-200H-152	377	Hex Nut M6	P25-200H-377
153	Flat Washer	P25-200H-153	378	Bracket	P25-200H-378
154	Hex Bolt M8x25	P25-200H-154	379	Hex Bolt M5x10	P25-200H-379
155	Shaft	P25-200H-155	380	Nut Cap	P25-200H-380
156	Set Screw M6x8	P25-200H-156	381	Hex Nut M6	P25-200H-381
157	Knob	P25-200H-157	382	Nylon Washer	P25-200H-382
158	Washer	P25-200H-158	383	Shaft	P25-200H-383
159	Spring	P25-200H-159	384	Plate	P25-200H-384
160	Rod	P25-200H-160	385	Shaft	P25-200H-385
161	Handle	P25-200H-161			

# PARTS EXPLOSION

## CUTTERHEAD ASSEMBLY



# PARTS LIST

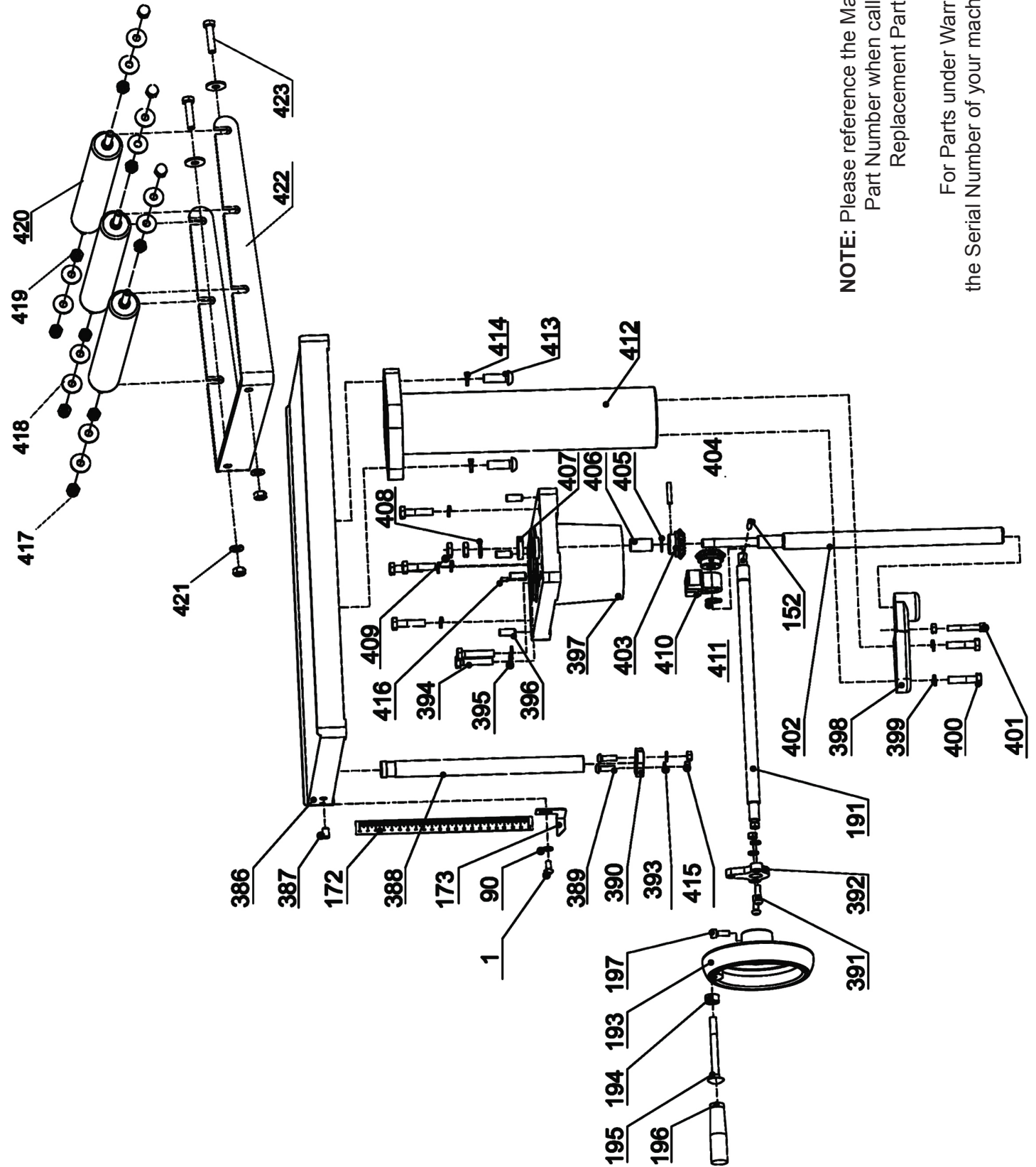
## CUTTERHEAD ASSEMBLY

KEY NO.	DESCRIPTION	MFG. PART NO.	KEY NO.	DESCRIPTION	MFG. PART NO.
30	Dust Port Assembly	P25-200H-30	53	Spring	P25-200H-53
33	Tube	P25-200H-33	55	Flange Nut	P25-200H-55
34	Hex Socket Set Screw	P25-200H-34	56	Outfeed Roller	P25-200H-56
35	Adjusting Washer	P25-200H-35	57	Infeed Roller	P25-200H-57
36	Anti-Kickback Fingers	P25-200H-36	58	Hex Bolt M8x35	P25-200H-58
37	Shaft	P25-200H-37	59	Roll Pin	P25-200H-59
38	Hex Socket Set Screw	P25-200H-38	60	Spring	P25-200H-60
39	Rubber Washer	P25-200H-39	62	Dust Collector	P25-200H-62
40	Bearing	P25-200H-40	63	Carriage Bolt	P25-200H-63
46	Mounting Tube	P25-200H-46	64	Flat Washer	P25-200H-64
47	Tube	P25-200H-47	338	Washer	P25-200H-338
48	Bearing Bracket	P25-200H-48	339	Knob	P25-200H-339
49	Hex Bolt M6x12	P25-200H-49	340	Locking Nut	P25-200H-340
50	Hex Bolt M8x30	P25-200H-50	348	Helical Cutterhead	P25-200H-348
51	Cutterhead Bracket	P25-200H-51	349	Knife Insert	P25-200H-349
52	Tighting Rod	P25-200H-52	350	Screw	P25-200H-350

**NOTE:** Please reference the Manufacturer's Part Number when calling for Replacement Parts.  
For Parts under Warranty, the Serial Number of your machine is required.

# PARTS EXPLOSION

## PLANER TABLE ASSEMBLY



**NOTE:** Please reference the Manufacturer's Part Number when calling for Replacement Parts.

For Parts under Warranty, the Serial Number of your machine is required.



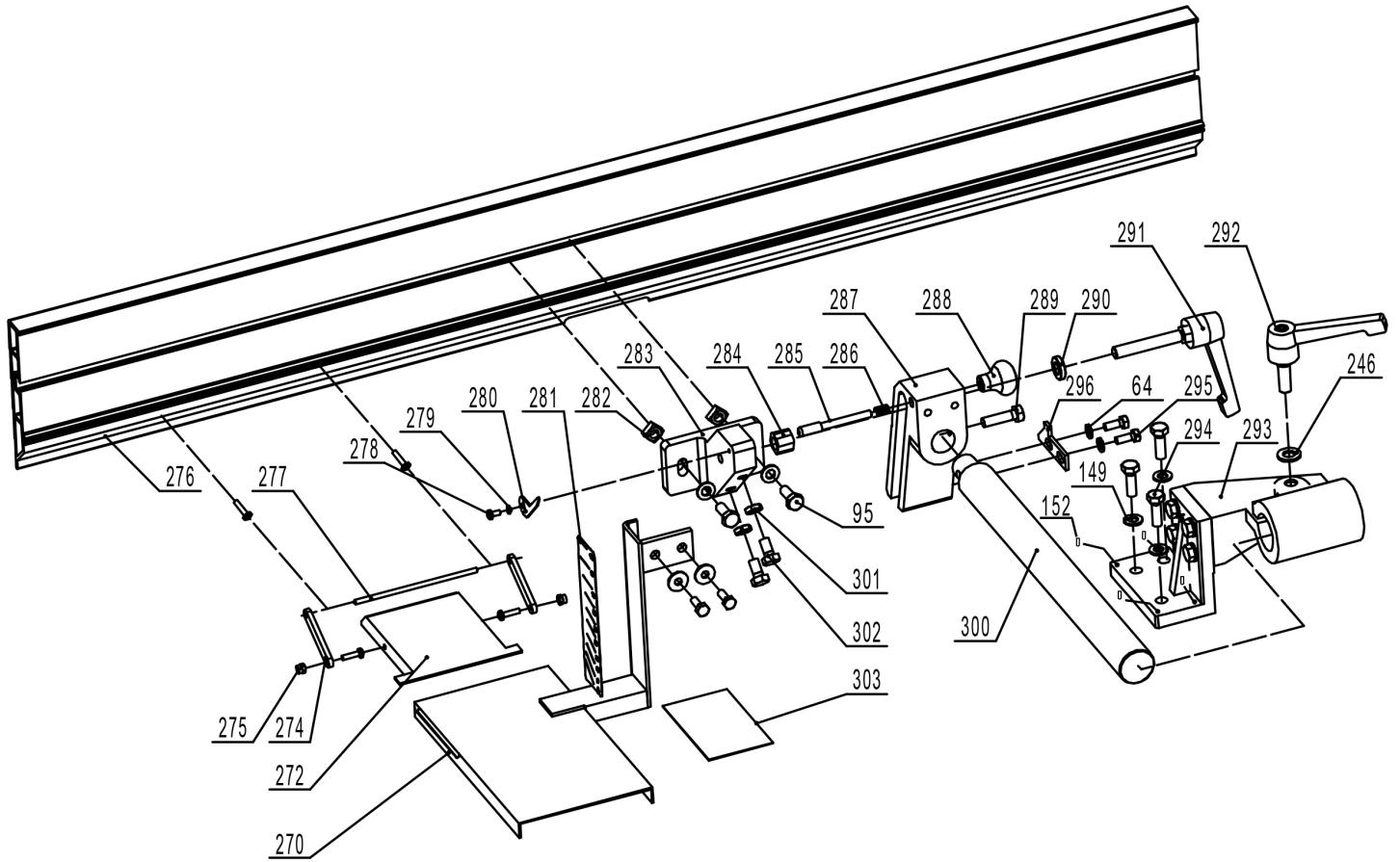
# PARTS LIST

## PLANER TABLE ASSEMBLY

KEY NO.	DESCRIPTION	MFG. PART NO.	KEY NO.	DESCRIPTION	MFG. PART NO.
1	Screw M6x12	P25-200H-1	400	Hex Bolt M8x35	P25-200H-400
90	Flat Washer	P25-200H-90	401	Screw M6x40	P25-200H-401
152	Hex. Socket Set Screw	P25-200H-152	402	Threaded Rod	P25-200H-402
172	Scale	P25-200H-172	403	Gear	P25-200H-403
173	Indicator	P25-200H-173	404	Roll Pin	P25-200H-404
191	Crank Bar	P25-200H-191	405	Washer	P25-200H-405
193	Handwheel	P25-200H-193	406	Threaded Tube	P25-200H-406
194	Hex Nut	P25-200H-194	407	Bearing	P25-200H-407
195	Handle Bolt	P25-200H-195	408	Washer	P25-200H-408
196	Handle	P25-200H-196	409	Hex Nut M10	P25-200H-409
197	Hex Socket Set Screw	P25-200H-197	410	Bracket	P25-200H-410
386	Planing Table	P25-200H-386	411	Retainer Ring	P25-200H-411
387	Set Screw M8x12	P25-200H-387	412	Tube	P25-200H-412
388	Rod	P25-200H-388	413	Screw M10x30	P25-200H-413
389	Screw M6x20	P25-200H-389	414	Spring Washer	P25-200H-414
390	Bushing	P25-200H-390	415	Hex Nut M6	P25-200H-415
391	Screw M6x20	P25-200H-391	416	Screw M6x20	P25-200H-416
392	Bushing	P25-200H-392	417	Nut M8	P25-200H-417
393	Washer	P25-200H-393	418	Washer	P25-200H-418
394	Hex Bolt M8x40	P25-200H-394	419	Nut M8	P25-200H-419
395	Washer	P25-200H-395	420	Roller	P25-200H-420
396	Hex Socket Screw M8x20	P25-200H-396	421	Washer	P25-200H-421
397	Position Tube	P25-200H-397	422	Bracket	P25-200H-422
398	Threaded Tube	P25-200H-398	423	Hex Bolt M8x35	P25-200H-423
399	Spring Washer	P25-200H-399			

# PARTS EXPLOSION & PARTS LIST

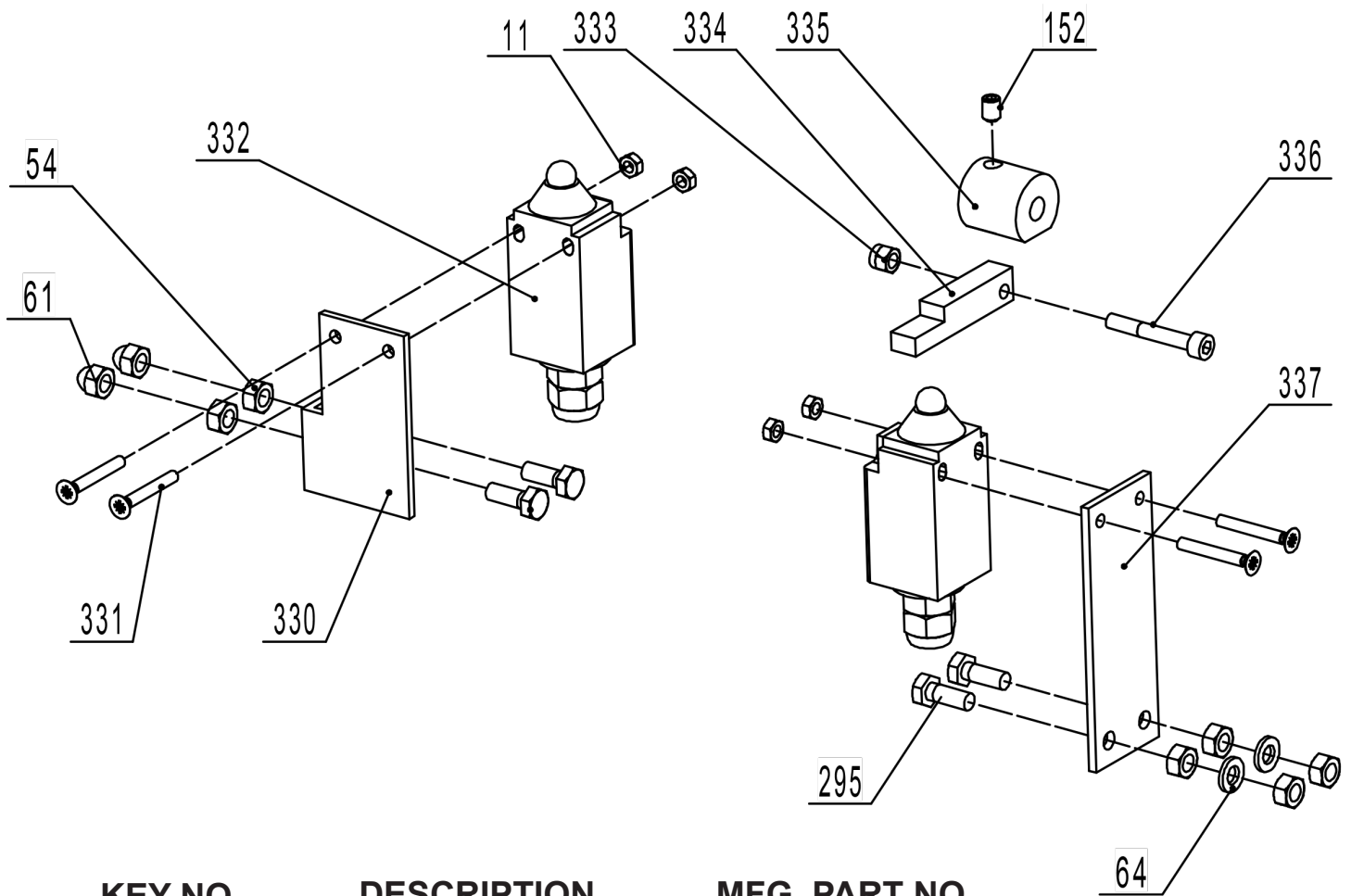
## FENCE ASSEMBLY



KEY NO.	DESCRIPTION	MFG. PART NO.	KEY NO.	DESCRIPTION	MFG. PART NO.
64	Flat Washer	P25-200H-64	284	Sliding Collar	P25-200H-284
95	Hex. Bolt	P25-200H-95	285	Pin Shaft	P25-200H-285
149	Hex Nut M8	P25-200H-149	286	Spring	P25-200H-286
152	Hex Socket Set Screw	P25-200H-152	287	Rotation Bracket	P25-200H-287
246	Washer	P25-200H-246	288	Pin Stop Knob	P25-200H-288
270	Cutterhead Cover	P25-200H-270	289	Hex Bolt M6x30	P25-200H-289
272	Sliding Cover	P25-200H-272	290	Washer	P25-200H-290
274	Sliding Cover Bracket	P25-200H-274	291	Tilt Locking Handle	P25-200H-291
275	Nylon Nut M4	P25-200H-275	292	Sliding Locking Handle	P25-200H-292
276	Jointer Fence	P25-200H-276	293	Sliding Bracket	P25-200H-293
277	Pin Shaft	P25-200H-277	294	Hex Bolt M8x25	P25-200H-294
278	Pan Head Screw M4x8	P25-200H-278	295	Hex Bolt M6x15	P25-200H-295
279	Spring Washer 4	P25-200H-279	296	Stop Bracket	P25-200H-296
280	Indicator	P25-200H-280	300	Guide Rail	P25-200H-297
281	Scale	P25-200H-281	301	Hex Nut	P25-200H-298
282	Square Nut	P25-200H-282	302	Hex Bolt M8x16	P25-200H-299
283	Jointer Fence Bracket	P25-200H-283	303	Warning Label	P25-200H-300

# PARTS EXPLOSION & PARTS LIST

## MICRO SWITCHES

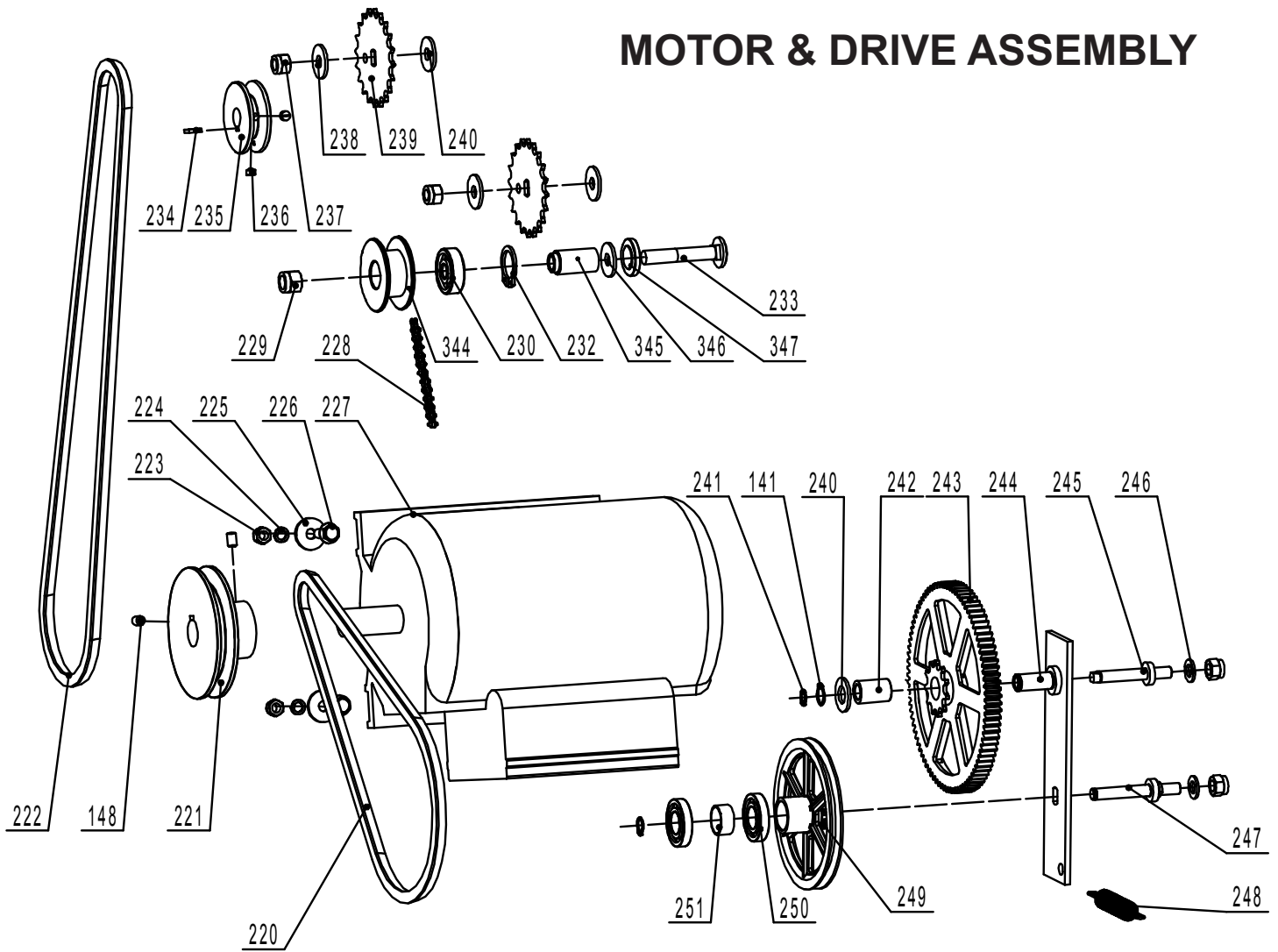


KEY NO.	DESCRIPTION	MFG. PART NO.
11	Hex Nut M4	P25-200H-11
54	Nut	P25-200H-54
61	Cap Nut	P25-200H-61
64	Flat Washer	P25-200H-64
152	Hex Socket Set Screw	P25-200H-152
295	Hex Bolt M6x15	P25-200H-295
330	Safety Switch Bracket II	P25-200H-330
331	Screw M4x30	P25-200H-331
332	Safety Switch	P25-200H-332
333	Lock Nut M5	P25-200H-333
334	Bracket	P25-200H-334
335	Small Cam Wheel	P25-200H-335
336	Hex Socket Set Screw M5x35	P25-200H-336
337	Safety Switch Bracket I	P25-200H-337

**NOTE:** Please reference the Manufacturer's Part Number when calling for Replacement Parts.  
For Parts under Warranty, the Serial Number of your machine is required.

# PARTS EXPLOSION & PARTS LIST

## MOTOR & DRIVE ASSEMBLY



KEY NO.	DESCRIPTION	MFG. PART NO.	KEY NO.	DESCRIPTION	MFG. PART NO.
141	Hex Nut	P25-200H-141	237	Lock Nut M10	P25-200H-237
148	Hex Nut M12	P25-200H-148	238	Flat Washer	P25-200H-238
220	V-Belt	P25-200H-220	239	Big Chain Wheel	P25-200H-239
221	Motor Pulley	P25-200H-221	240	Washer	P25-200H-240
222	V-Belt A1194	P25-200H-222	241	Retaining Ring	P25-200H-241
223	Cap Nut M8	P25-200H-223	242	Tube for Chain Wheel	P25-200H-242
224	Lock Washer 8	P25-200H-224	243	Cam Wheel	P25-200H-243
225	Flat Washer 8	P25-200H-225	244	Cam Wheel Bracket	P25-200H-244
226	Flange Bolt M8x25	P25-200H-226	245	Cam Wheel Shaft	P25-200H-245
227	Motor	P25-200H-227	246	Flat Washer	P25-200H-246
227A	Capacitor (not shown)	P25-200H-227A	247	Shaft	P25-200H-247
228	Chain	P25-200H-228	248	Spring	P25-200H-248
229	Lock Nut M12	P25-200H-229	249	V-Belt Pulley	P25-200H-249
230	Bearing	P25-200H-230	250	Bearing	P25-200H-250
232	Tube	P25-200H-232	251	Bearing Spacer	P25-200H-251
233	Bolt M12x70	P25-200H-233	344	Wheel	P25-200H-344
234	Key 6x16	P25-200H-234	345	Tube	P25-200H-345
235	Spindle Pulley	P25-200H-235	346	Washer	P25-200H-346
236	Hex Socket Set Screw	P25-200H-236	347	Washer	P25-200H-347