



**Asia-Pacific
Economic Cooperation**

2014/SOM1/CTI/WKSP/007

Development of Shanghai e-Port and Realization of Trade Facilitation

Submitted by: China



**Workshop on New Way to Promote Supply Chain
Connectivity in the Context of Global Value
Chain
Ningbo, China
21–22 February 2014**

Development of Shanghai E-port and Realization of Trade Facilitation



Contents

- I Background and Development History of Shanghai E-port
- II Construction Overview of Shanghai E-port
- III Introduction of Successful Cases for Shanghai E-port
- IV Shanghai E-port and Shanghai Free Trade Pilot Area
- V Exploratory Scheme of Trade Facilitation for Bilateral and Multilateral Framework



1. General Condition of Shanghai Logistics

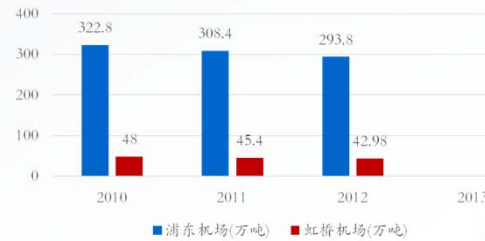
Both the total throughput and container throughput of Shanghai sea transportation rank first globally for the consecutive four years, and the total tonnage of cargo throughput in Shanghai Pudong Airport ranks third in the world.



上海港吞吐量



上海空运吞吐量



2. Constituent Units of Shanghai E-port

Joint Session of Shanghai E-port construction

18 members

- | | | |
|--|--|--|
| China E-port | Shanghai Municipal Transportation and Port Authority | Shanghai Railways Bureau |
| Shanghai Municipal Development and Reform Commission | Shanghai Customs | Shanghai Frontier General Station |
| Shanghai Municipal Commission of Economy and Informatization | Shanghai Inspection and Quarantine Bureau | Shanghai Airport Group |
| Shanghai Port Office | The People's Bank of China Shanghai Branch | Shanghai Port Group |
| Shanghai Municipal Business Commission | Shanghai Maritime Bureau | Shanghai Trust Company |
| Shanghai Municipal Finance Bureau | Shanghai Municipal National Tax Bureau | The people's Bank of China, Shanghai Headquarter |

3. Development History of Shanghai E-port

2009 According to the requirements for a new round construction of international shipping center, Shanghai Government, by taking advantage of integrating information resources such as E-port and port shipping etc., plans to accelerate the establishment of a “comprehensive platform of Shanghai International shipping center for sharing information”, thus writing a new page in building a “smart port” .

2004 According to the construction deployment of national E-port, Shanghai Municipal Government, General Administration of Customs, and other Central Ministries & Agencies were joined up to build a unified Shanghai E-port based on the “big clearance” platform, which became the first local E-port which listed and operated at that time. At the same period, Shanghai Municipal Government and General Administration of Customs jointly issued a document, to establish a joint session and its office of Shanghai E-port, which will be responsible for the leading and coordination of Shanghai E-port construction. Shanghai branch center of China E-port data center, and Eton Company are the operating units.

2001 Driven by Shanghai Municipal Party Committee and Municipal Government, three information service entities are integrated according to the development model of “government promotion, market operation, commercialized management” to establish Eton Company. In the same year, according to the requirements of Shanghai “big clearance” project, Eton initiates a mating information project-Shanghai “big clearance” platform. After four years of construction, an information network connecting main ports and a centralized central data processing center are built basically.

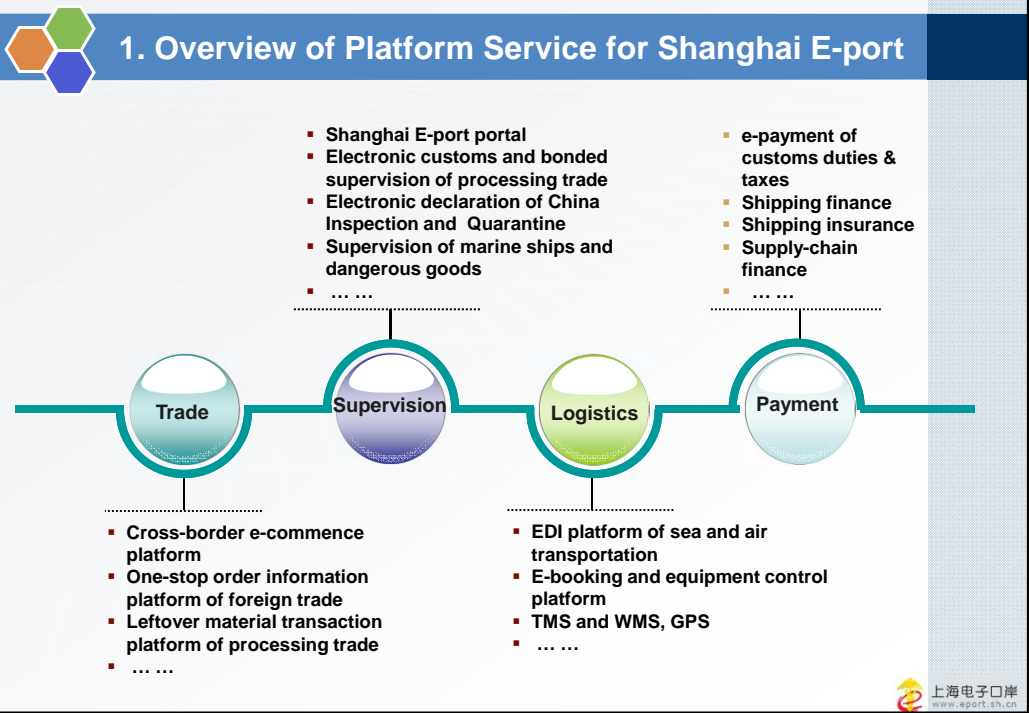
1999 The Electronic Data Exchange Network of International Economic and Trade is listed as one of the five key projects in Shanghai information port. Three port information service entities-Shanghai EDI center, Shanghai harbor EDI center and Economic and Trade network are gradually established at Shanghai port .

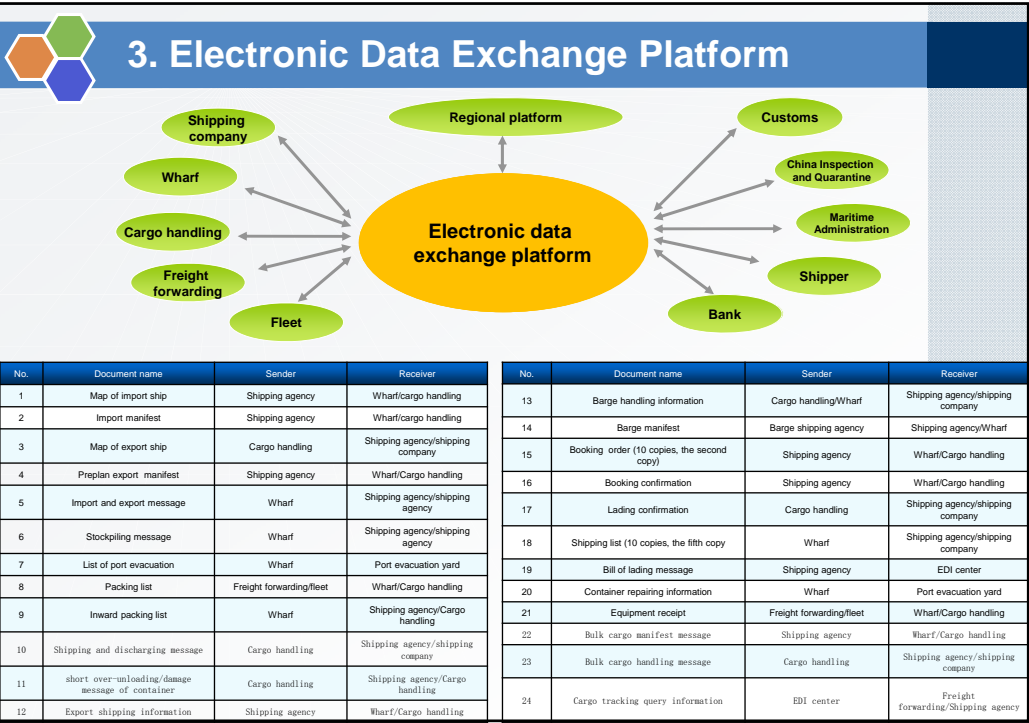
上海电子口岸
www.eport.sh.cn

Contents

- I Background and Development History of Shanghai E-port
- II Construction Overview of Shanghai E-port
- III Introduction of Successful Cases for Shanghai E-port
- IV Shanghai E-port and Shanghai Free Trade Pilot Area
- V Exploratory Scheme of Trade Facilitation for Bilateral and Multilateral Framework

上海电子口岸
www.eport.sh.cn





4. Electronic Tariff Payment Platform

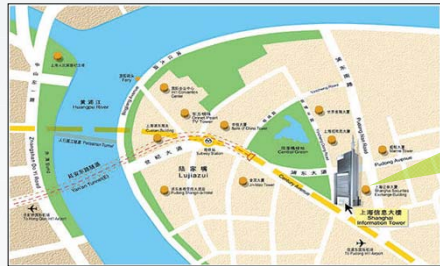
- The first batch of the third-party payment license all over the economy
- B2G and B2B payment
- Unique payment platform in the field of E-port
- Interconnected with 22 banks at home and abroad
- Payment of customs taxes and duties covers 42 custom districts all over the economy
- Annual payment transaction exceeds RMB 1.1 trillion
- E-payment ratio of tariff exceeds 80%

上海电子口岸
www.eport.sh.cn



5. Platform Infrastructure-data Center

- 1100m² master data center (Lujiazui)
- 600m² remote disaster recovery backup center in the same city (Zhangjiang)
- A data center of marine ship dynamic center all over the economy is built in 2011 (Zhangjiang)
- A data backup center of China E-port is under construction (Qingpu)

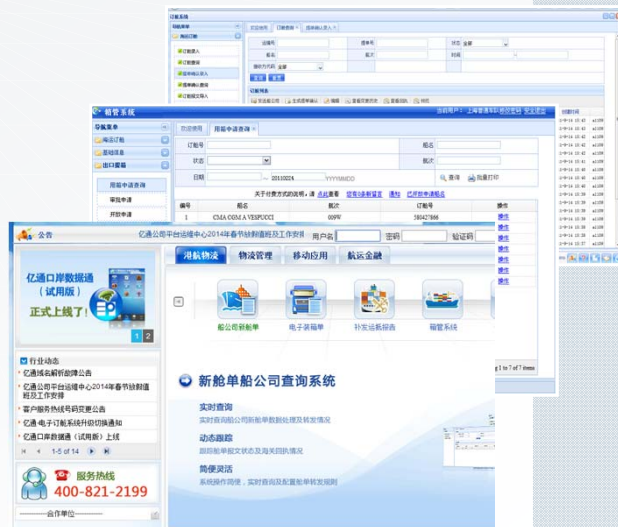


- 7X24 hours continuous service is provided
- Availability ratio is up to 99.9%
- Over 190 million messages is handled annually



6. Value-added Service of E-port Platform

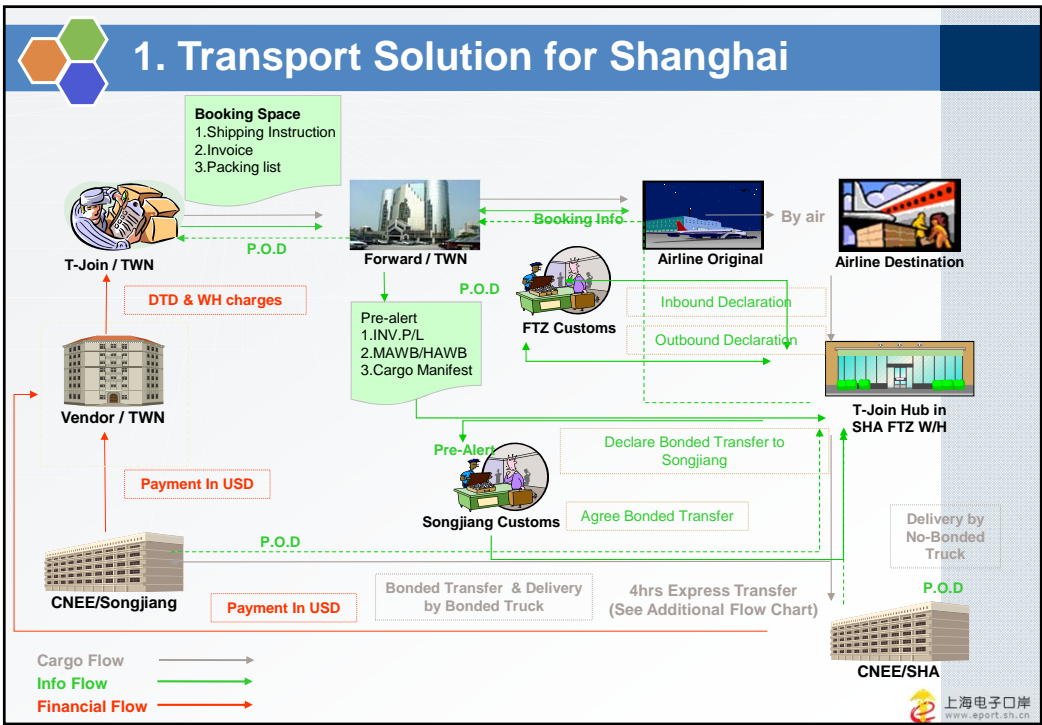
- Innovative cloud platform of shipping service application
- Integration application such as trade management, manifest, booking space, container management, and customs affairs collaboration etc. has been provided
- Open platform and integrated shipping information service
- Basic services of cloud application such as unified user management, application publishing, monitoring, billing, payment etc. is provided

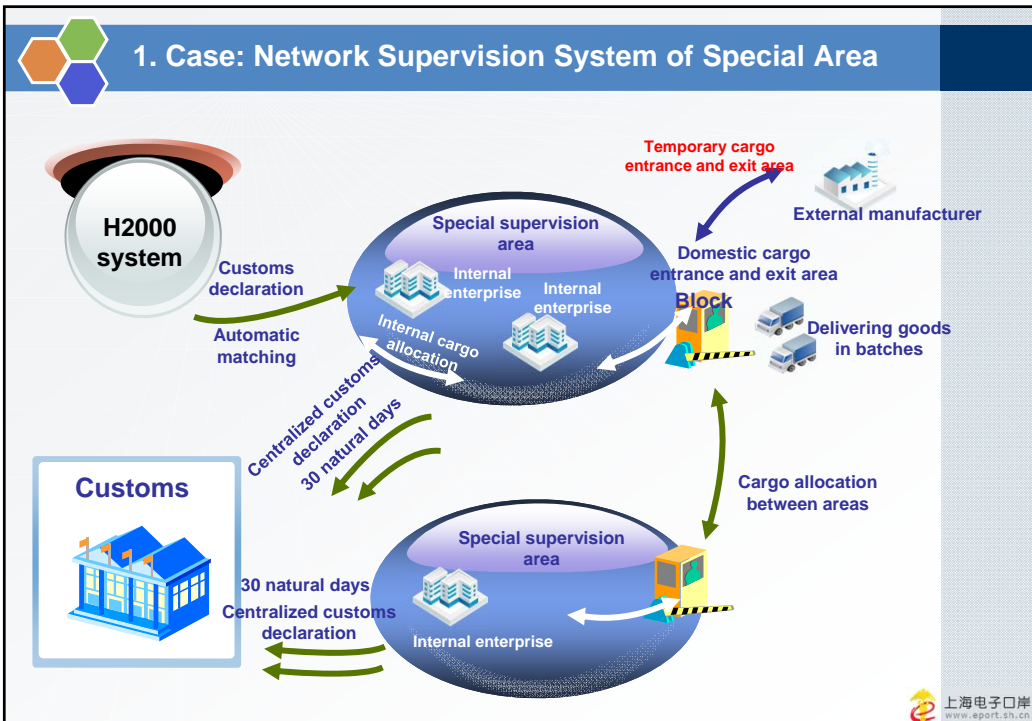
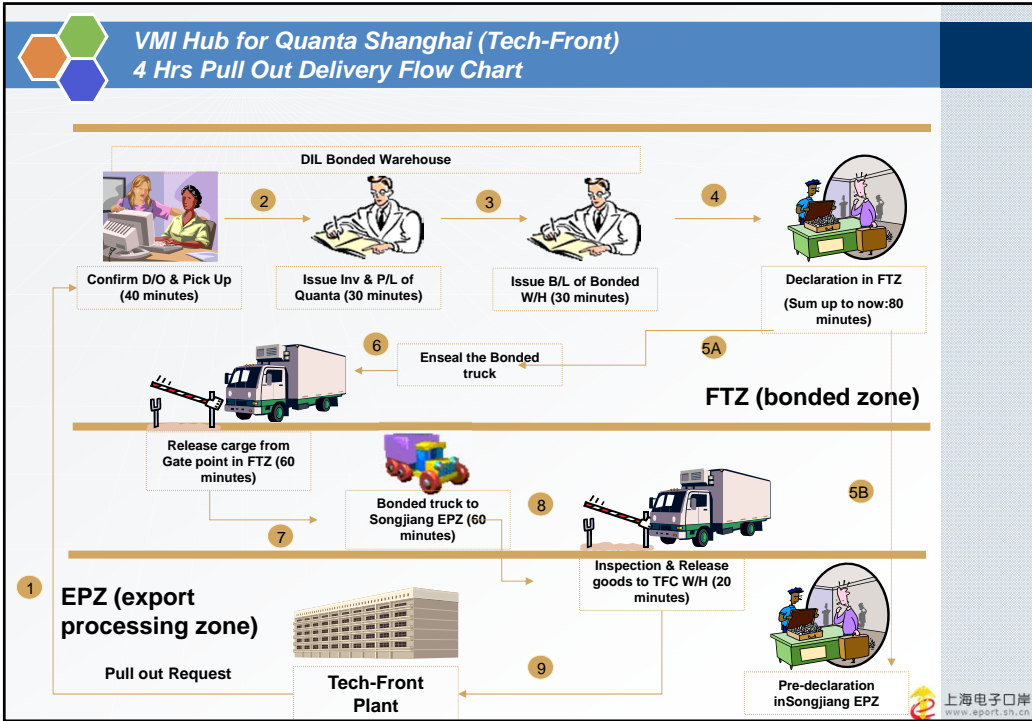


Contents

- I Background and Development History of Shanghai E-port
- II Construction Overview of Shanghai E-port
- ▶ III Introduction of Successful Cases for Shanghai E-port
- IV Shanghai E-port and Shanghai Free Trade Pilot Area
- V Exploratory Scheme of Trade Facilitation for Bilateral and Multilateral Framework

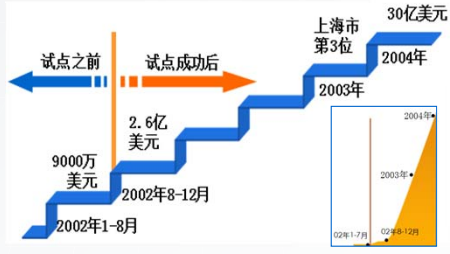
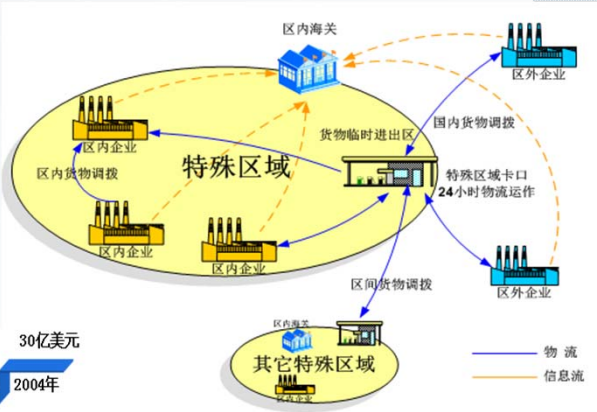
上海电子口岸
www.eport.sh.cn





1. Case: Network Supervision System of Special Area

The joint and centralized management of supervision information, logistics information within special areas and among different special areas is achieved, which covers 13 special areas in Shanghai.

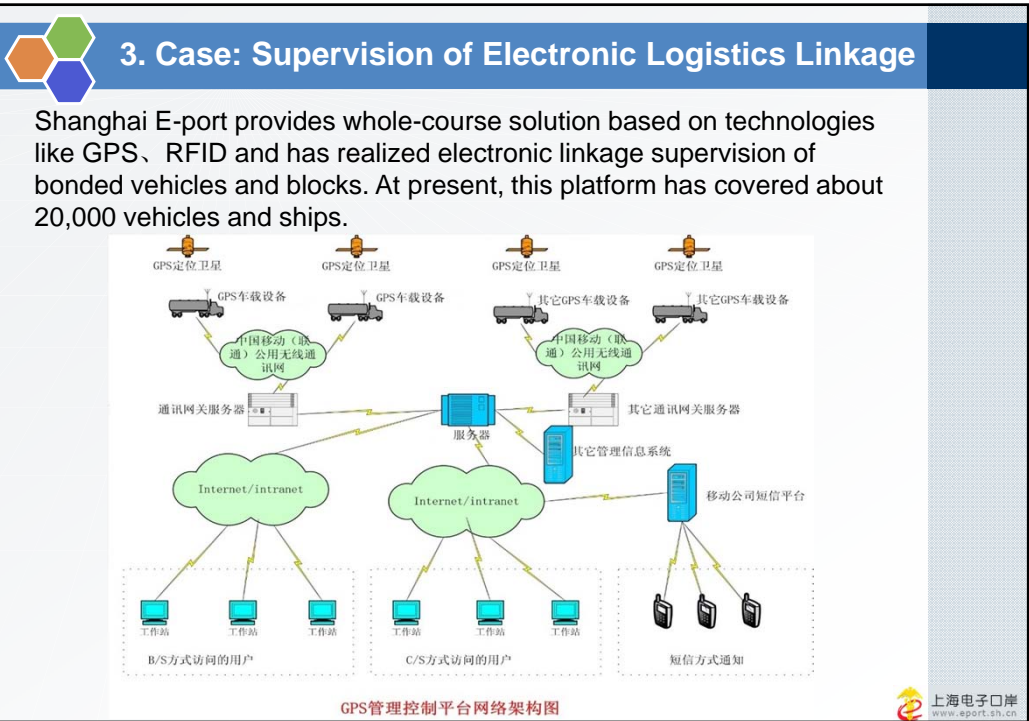
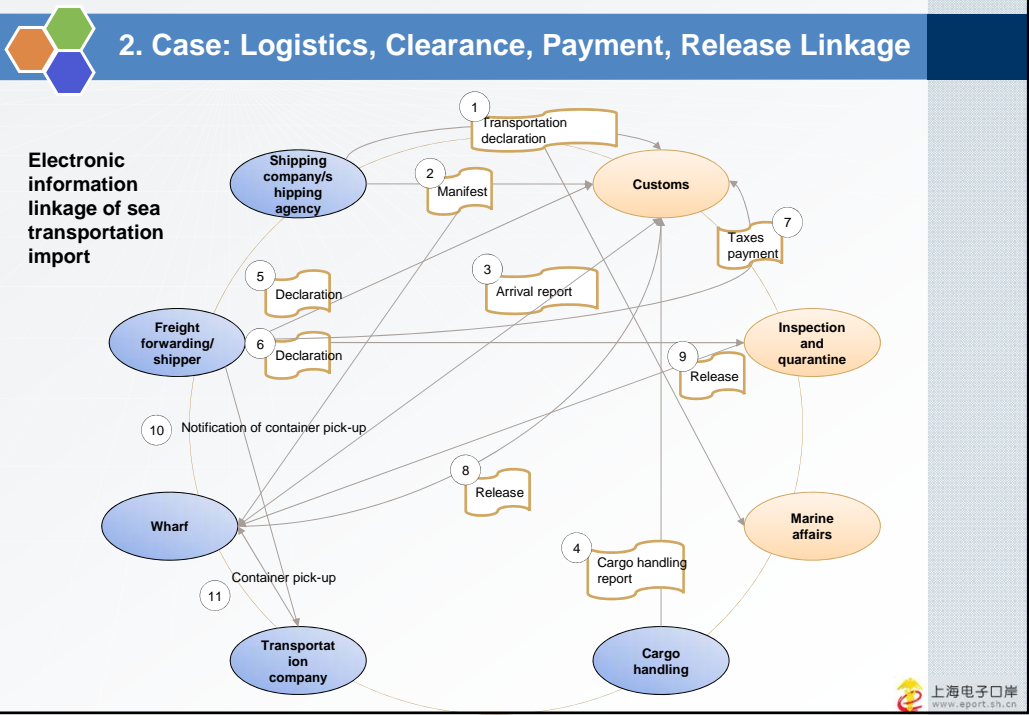


- Improvement of clearance efficiency: books filing time is reduced from several days to tens of minutes, customs clearance time is reduced from several hours to tens of minutes, cargo can pass customs checkpoint within 24 hours.
- Strict government regulation: electronic book write-off combines data computation and physical inventory, thus achieving the real-time supervision of logistics.

2. Case: Logistics, Clearance, Payment, Release Linkage

Shanghai E-port has achieved a complete information service from logistics, clearance, payment to release, and a fully-connected and systematical integration with logistics operation enterprises, supervision departments etc. All releases adopt paperless operation, while 50% declaration achieves paperless, thus significantly improving the logistics efficiency.

Logistics collaboration	Customs declaration	Taxes and duties payment	Electronic release
<ul style="list-style-type: none"> • Booking space (export) • Container pick up (export) • Packing (export) • Inward • Loading and unloading • Tracking 	<ul style="list-style-type: none"> • Transportation declaration • Manifest declaration • Inspection and quarantine declaration • Arrival declaration • Customs cargo declaration • Tracking and cargo control 	<ul style="list-style-type: none"> • Tax bill synchronization • e-payment • List reconciliation 	<ul style="list-style-type: none"> • Inspection and quarantine release • Customs release • Cargo handling declaration



4. Case: 2010 RFID-based Safety Traceability System of Foods

- In 2010, Shanghai E-port integrated data service of logistics, clearance data and established a RFID-based safety traceability system for Shanghai World Expo.

编号	目的地	出区时间	车牌号	司机	加转时间	报关号
7148	企业监管仓库		eweww2343	123		3103001102
7110	企业监管仓库		IPAA 0001	小王		31030010922

上海电子口岸
www.eport.sh.cn

4. Case: 2010 RFID-based Safety Traceability System of Foods

上海电子口岸
www.eport.sh.cn



5. Case: Cross Border Electronic Commerce (Cross Border Pass)

The cross border pass platform establishes a full set of complete, efficient, safe, strict management standard and information platform which is adapted to the development of electronic commerce for Shanghai cross border trade, and guides customers to purchase high-quality foreign goods by direct-purchasing channel, thus achieving transparent tax payment.

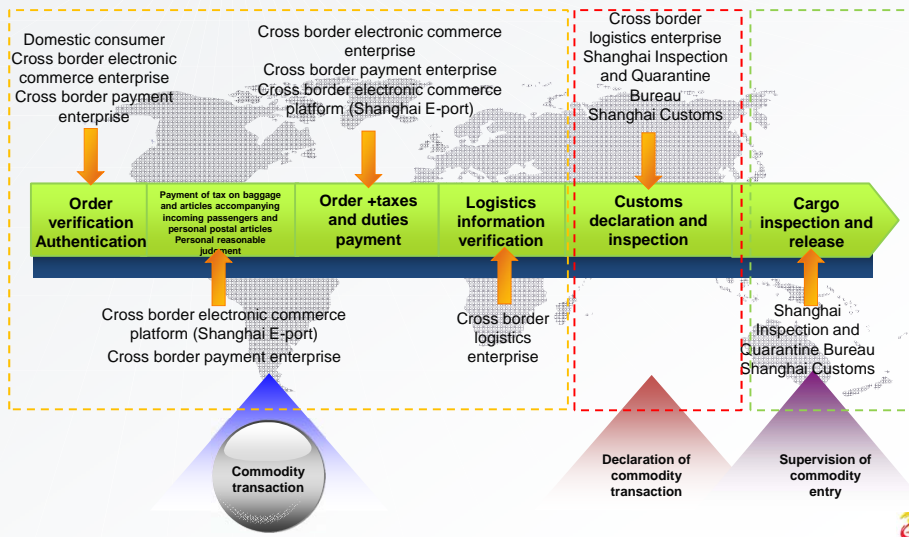


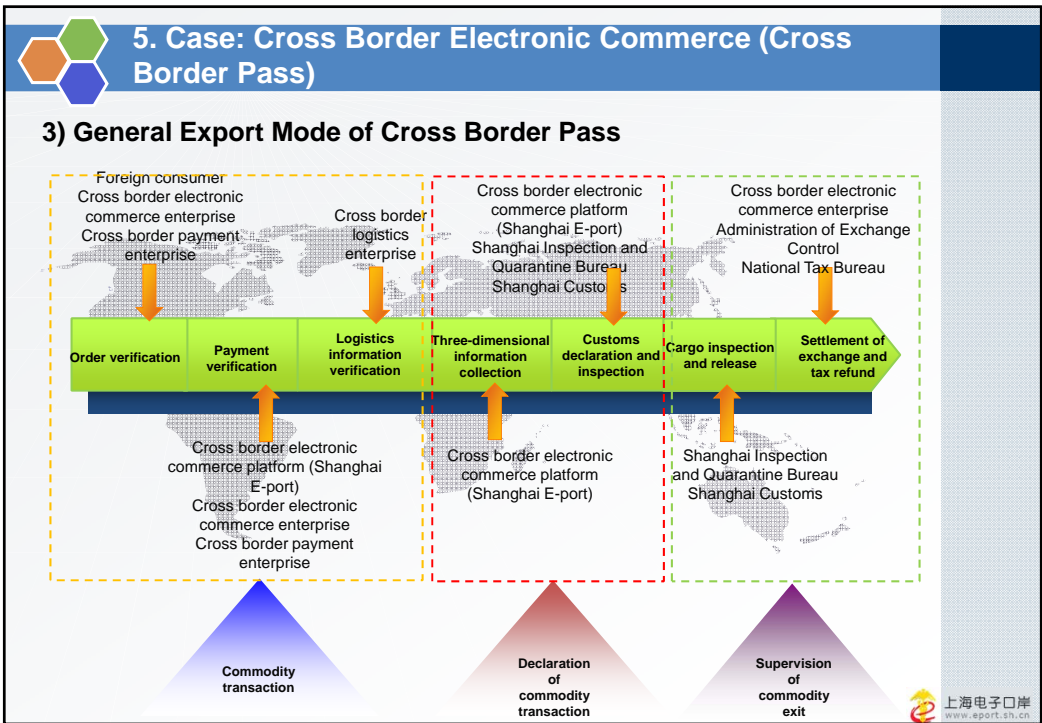
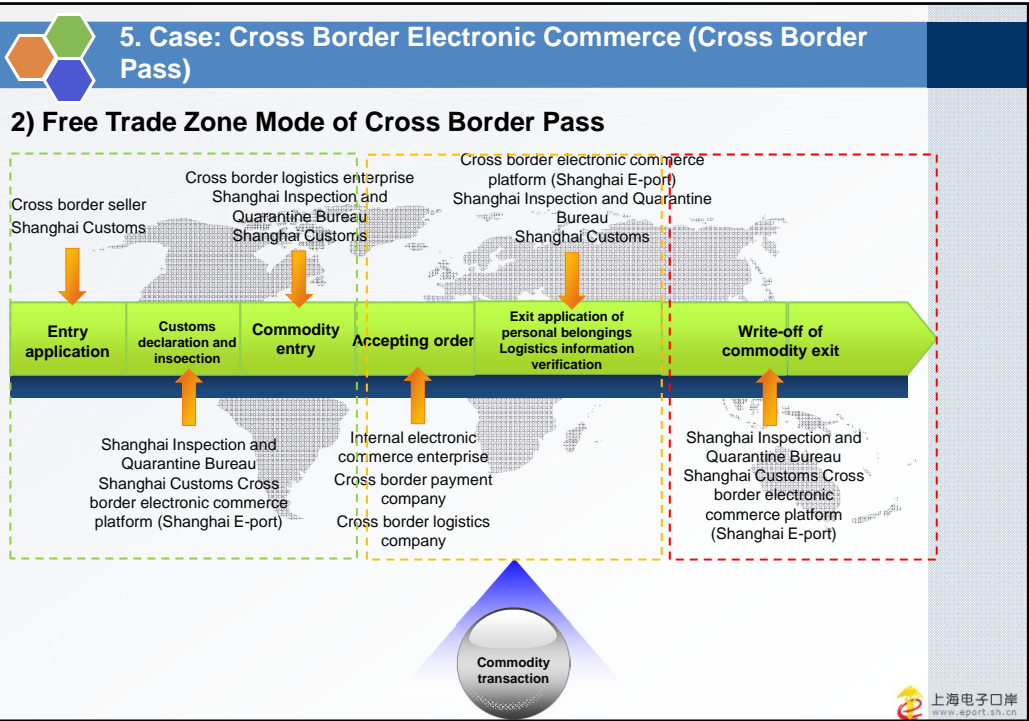
The platform was officially issued on November 28, 2013, achieving the whole service from shopping guide, transaction, payment, tariff, clearance to delivery. The platform supports three modes: import direct mail, import from Free Trade Zone and export.



5. Case: Cross Border Electronic Commerce (Cross Border Pass)

1) DM Corner Mode of Cross Border Pass







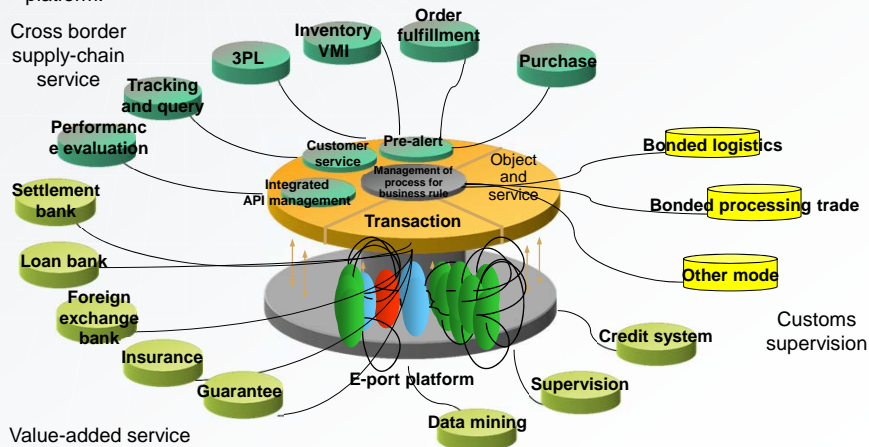
Contents

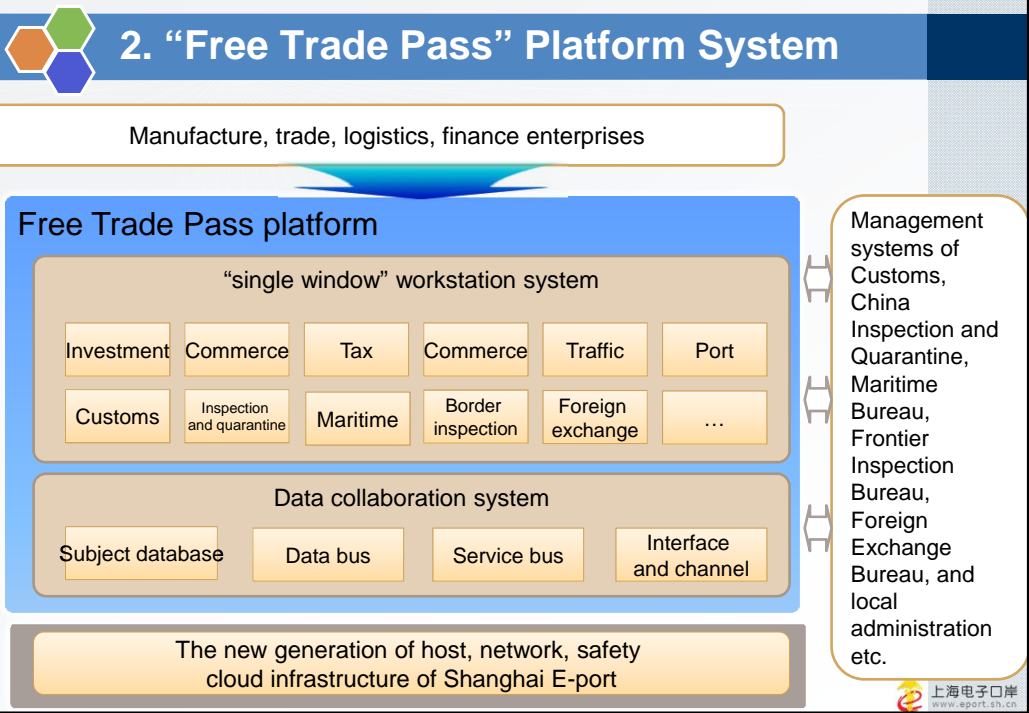
- I Background and Development History of Shanghai E-port
- II Construction Overview of Shanghai E-port
- III Introduction of Successful Cases for Shanghai E-port
- ▶ IV Shanghai E-port and Shanghai Free Trade Pilot Area
- V Exploratory Scheme of Trade Facilitation for Bilateral and Multilateral Framework



1. "Free Trade Pass" Platform Planning

Based on the special demands of administrative examination and approval Re, supervision process innovation and entry enterprises in Free Trade Pilot Area, "Free Trade Pass" platform adopts a series of advanced technologies such as cloud computing, big data, and mobile internet etc., thus achieving the combination of efficient operation and strict supervision on the platform.





Contents

- I** Background and Development History of Shanghai E-port
- II** Construction Overview of Shanghai E-port
- III** Introduction of Successful Cases for Shanghai E-port
- IV** Shanghai E-port and Shanghai Free Trade Pilot Area
- V** Exploratory Scheme of Trade Facilitation for Bilateral and Multilateral Framework

上海电子口岸
www.eport.sh.cn

1. Standardization and Paperless of Trade, Logistics Documents and Their Realization

The Chinese and the U.S. governments and enterprises of both economies (US APEC National Center, Commerce Department, China Customs, US Customs, FedEx, UPS, TNT and DHL) realized the pilot project of clearance in Shanghai by adopting PPP mechanism in APEC meeting 2001.

- In 2009, IATA has raised suggestions and corresponding standards of eFlight of paperless air freight.
- At present, related port departments in China are putting vigorous efforts to promote paperless clearance, electronic payment which create favorable conditions to make eFlight possible.
- The overall realization of e-freight also needs a bilateral and multilateral cooperation.

With expectation of building a good paperless trading environment for Shanghai port, Shanghai E-port will make contribution to the realization of Supply Chain Connectivity such as eFlight by adopting bilateral and multi-lateral cooperation under APEC framework.

上海电子口岸
www.eport.sh.cn

1. Standardization and Paperless of Trade, Logistics Documents and Their Realization

IATA e-freight: 16 Documents in 2009 Scope

Shippers (Origin) → **Freight Forwarders** → **Export Customs** → **Carrier** → **Import Customs** → **Destination Freight Forwarders** → **Consignees**

- Invoice
- Packing List
- Certificate of Origin
- Letter of Instruction*
- Dangerous Goods Declaration*
- Master Air Waybill
- House Waybill
- House Manifest
- Export Goods Declaration
- Customs Release Export
- Flight Manifest
- Transfer Manifest*
- Export Cargo Declaration
- Import Cargo Declaration
- Import Goods Declaration
- Customs Release Import

The documents in scope involve a limited number of governmental controlling authorities, as some of them:

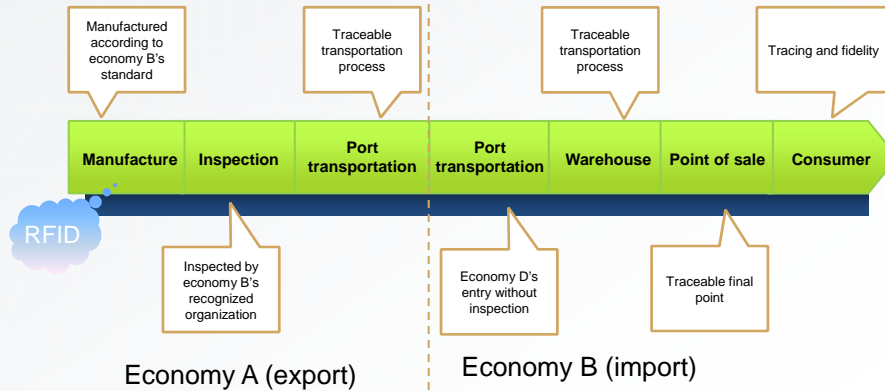
- Still require original paper document; or
- Do not accept electronic submission; or
- Have no international standards.

上海电子口岸
www.eport.sh.cn



2. Quality Tracing and Fidelity of Bilateral Trade Products

By means of data standard system controlled by products quality according to economy of origin tracing system, we believe that the infrastructure for data exchange of "one-stop" cross border trade business platform can be achieved. End-to-end source tracking of products in PPP mechanism can give complete supply chain information of products to enterprises, government and customers, ensure the quality of final products and customer benefits, promote trade equality, convenience and liberty, thus advancing regional economic integration.



Thank you !