



# TCF 1400

**140 U.S. ton | 127 metric ton  
Telescopic Crawler Crane**

- 42.3' - 195.4' | 12.9 - 59.5 m main boom
- 203' | 61.96m main boom tip height
- Six section pin & latch boom
- Remarkable control, reliability & capacity performance
- Unbeatable hydraulic pilot-operated control
- Superior jobsite flexibility
- 20° tilting cab
- Quick mobilization - transports in four or five loads
- Rear view and winch cameras

# TCC 1400

140 U.S. ton | 127 metric ton Telescopic Crawler Crane

**Built for remarkable control,  
reliability and capacity  
performance on any terrain**

- 320 hp (239 kW) Cummins QSL Tier 4 Final engine
- Variable displacement piston type main pumps with total horsepower control
- Main hoists powered through piston motors and winch planetary drums grooved for 7/8" (22mm) wire rope
- 22,380 lb (10 151 kg) of line pull
- 537 fpm (163.7 m/min) of winch speed
- Three working gauges
- Multiple counterweight configurations

Option external  
rated capacity  
limiter light bar



Optional - external

20° tilting cab

Roof wiper with  
opening top hatch

Optional  
Amber strobe

360° remote  
high intensity  
flood light

Optional front and rear tool boxes

Carbody jacks deploy fast and easily

## Standard with:

- Upper guardrail
- Rear view camera
- Winch camera
- Hoist drum cable follower
- Travel and swing alarm
- Cat walks
- Assembly RCL capacity chart on jacks

Greaseless boom







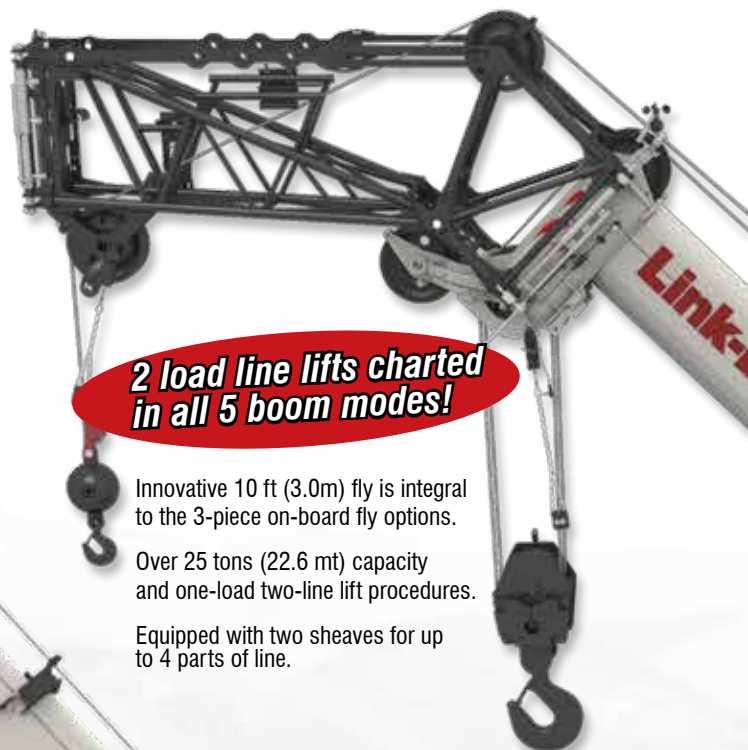
Excellent access with back lit lighting for all routine engine and hydraulic maintenance



Non-slip safety strips, extended length catwalks, sideframe steps and upper guard rails provide sure-footed access to the crane upper.



**Link-Belt has the only greaseless,  
high-capacity formed booms  
designed and built in  
North America!**



**2 load line lifts charted  
in all 5 boom modes!**

Innovative 10 ft (3.0m) fly is integral  
to the 3-piece on-board fly options.

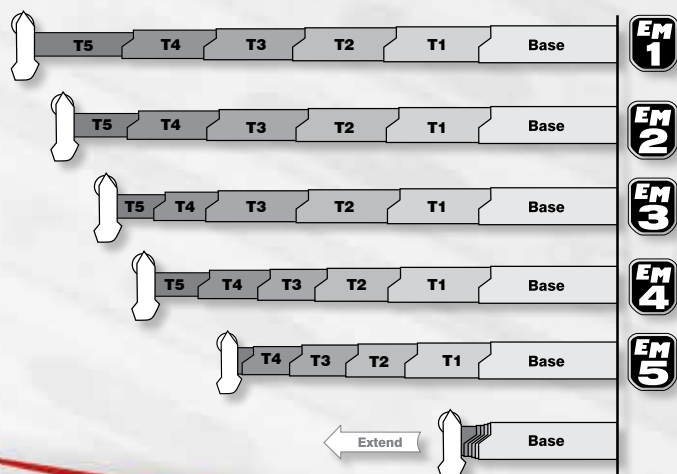
Over 25 tons (22.6 mt) capacity  
and one-load two-line lift procedures.

Equipped with two sheaves for up  
to 4 parts of line.

## **Pin & latch boom with attachment flexibility**

- Ingenious **Teflon wear pucks** impregnated in the full contact wear pads eliminate the need for greasing the boom.
- **Quick reeve boom head** eliminates the need to remove the becket to change the reeving.
- **5 extend modes:** EM1-EM5 and standard modes enhance both the structural and stability capacity capability and are fully synchronized for normal operation.
- **Manual offset fly:** 0°, 15°, 30°, 45°
- **No deducts** for stowed attachments

**Only 5  
Extend  
Modes!**



**GREASELESS BOOM  
TEFLON  
WEAR PADS!**

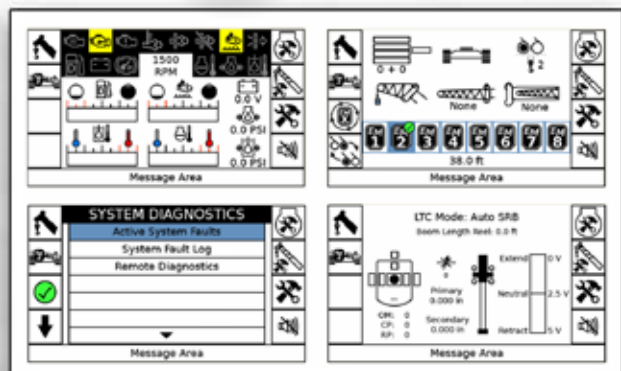




# Wireless Remote Control-optional

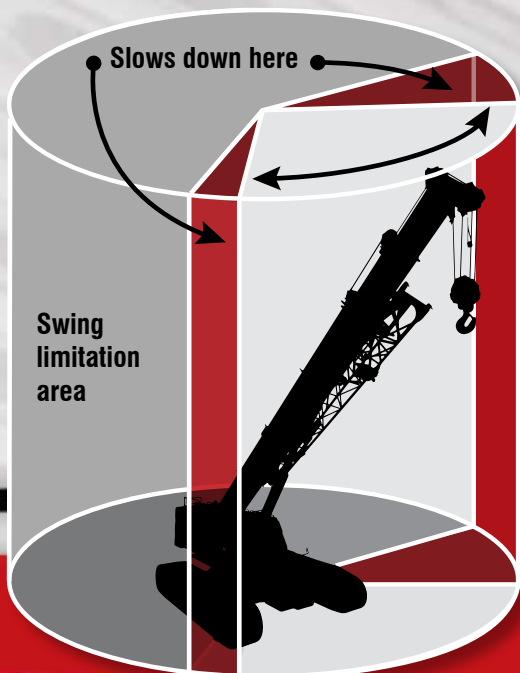
Multiple display options available including:

- Fine metering controls
- Boom diagnostics
- Engine data
- System diagnostics and more
- Crane configuration



## Operator aid features

- Operator settable alarms with function kick-out include left and right **slew angle**, maximum & minimum **boom angle**, head height, **load radius**, **boom length**, and operator defined area



**Latest, simple, one-man fly erection technology minimizes work-at-height!**

- One man operation
- Swing around at 0°
- Minimal ladder climbs
- Fly erection assist cylinder controlled from the ground
- Pivot-point & boom head speed screws



Boom head speed screws



Rope keeper maintains travel of rope through sheave

Quick reeve boom head eliminates the need to remove the becket when it becomes necessary to change the reeving



New efficient fly pinning design focuses on ease of assembly/disassembly



Fly erection and stowing assist cylinder

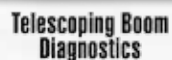
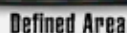
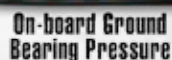




- ## Total crane operating system

# Link-Belt

## PULSE



- ## Telematics. You own the data!

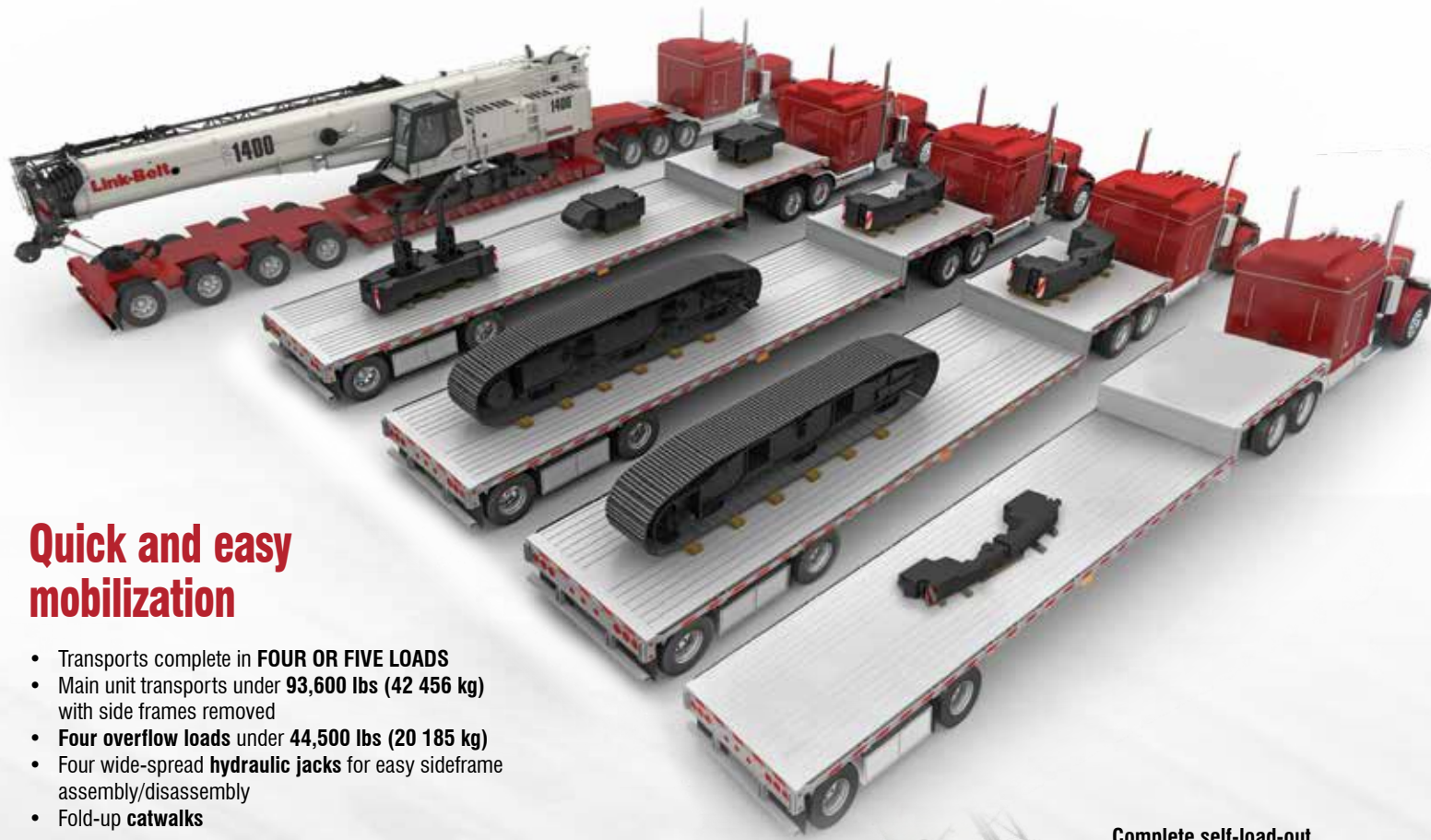
- Viewing options for sharing data with distributor and Link-Belt
- Location and operational settings
- Monitor routine maintenance intervals
- Crane and engine monitoring
- Diagnostic and fault codes

**Powered by**  
**Link-Belt**  
**PULS**

Powered by  
**Link-Belt**  
PULSE

[illegible]





## Quick and easy mobilization

- Transports complete in **FOUR OR FIVE LOADS**
- Main unit transports under **93,600 lbs (42 456 kg)** with side frames removed
- **Four overflow loads** under **44,500 lbs (20 185 kg)**
- Four wide-spread **hydraulic jacks** for easy sideframe assembly/disassembly
- Fold-up **catwalks**

### JUST 5 TRUCKS GETS THE TCC-1400 TO YOUR JOB!

<b>Main transport load:</b> Under 93,600 lbs (42 456 kg)	12' 8" overall transport height on 10" blocks 10' 6" overall width with sideframes removed
<b>1st overflow:</b> 44,000 lbs (19 958.4 kg)	"A" ctwt 19,000 lbs (8 618.4 kg) Two 12,500 lbs (5 670 kg) carbody counterweights
<b>2nd &amp; 3rd overflow:</b> 44,500 lbs each (20 185.2 kg)	28,500 lbs (12 927.6 kg) sideframe 16,000 upper "B/C" ctwt
<b>Fourth overflow:</b> 6,000 lbs each (2721kg)	6,000 (2721) "D" Counterweight

Complete self-load-out and assembly. Link-Belt PULSE RCL monitors capacities on jacks.



Fast, easy counterweight removal







Link-Belt Construction Equipment Company is a leader in the design, manufacture and sales of telescopic and lattice boom cranes with headquarters and manufacturing facilities in Lexington, Kentucky, USA. Link-Belt is committed to the manufacture and service of high quality products that satisfy customers worldwide

Towards that end, Link-Belt has pursued a strategy of growth and investment. It has moved aggressively to seize more global market share by producing a broader range of products and strengthening distribution and personnel around the globe.

Link-Belt is also home to a family of passionate professionals with a legacy of innovation and cutting-edge technology spanning over 140 years. These professionals, in a 740,000 sq. ft. (68 748 m<sup>2</sup>) manufacturing facility and with a culture of continuous innovation, have pushed Link-Belt to be the most modern crane manufacturer in North America.

## Your crane investment is always protected... with your Link-Belt distributor.

When you invest in a Link-Belt crane, you invest in a legacy of outstanding customer support dating back to 1874.

The ultimate value of a machine begins with state-of-the-art design and quality manufacturing, but it is the excellent Link-Belt distributor product support that determines its long term value.

This philosophy has earned Link-Belt cranes the enviable position of traditionally commanding some of the highest resale prices in the industry.

"... to be  
recognized  
as a

**leader in  
customer  
service &  
satisfaction."**

— The Link-Belt Vision

# Link-Belt® *Preferred*

## As a member of Link-Belt Cranes user's group, you will have access to:

- A comprehensive online library of all parts, service and operator manuals for YOUR crane
- Interactive, live groundbearing calculations for YOUR crane
- Plus a vast array of information on new products, services and special offerings
- Online access to recommended spare parts lists, filter, lube and key lists plus maintenance information and more
- No annual fee or charges to access your crane information

**Link-Belt  
was born  
because our  
founding father  
understood the  
importance of  
replacement parts.**

William Dana Everett

### Building on that principal...

- Trained technical specialists
- Faster and more efficient customer service
- State of the art computer information systems
- 24 hours a day, 7 days a week
- 72,000 Sq. Ft. Parts Distribution Center
- All parts in stock ship the same business day

**Link-Belt  
CRANES  
GENUINE  
PARTS**



©Link-Belt is a registered trademark. Copyright 2019  
All rights reserved. We reserve the right to change  
designs and specifications at any time. Litho in U.S.A.  
1/19 1640 #4551 (supersedes #4519)

**Link-Belt**  
CRANES  
Lexington, Kentucky | [www.linkbelt.com](http://www.linkbelt.com)