
ULTREX[®] FIBERGLASS DOORS FROM INTEGRITY

TOUGH ON THE OUTSIDE. BEAUTY ON THE INSIDE.



 **Integrity**
from **MARVIN**
Windows and Doors
Built to perform.®



BUILD WITH INTEGRITY

Our values and work ethic are forged by the communities where we're proud to make our quality products. When you choose Integrity® windows and doors, you support a small-town, family-owned and operated company with deep roots in the community; some Marvin® employees are third- and fourth-generation, following the family tradition. We share profits with our employees; we support our communities; we treat our dealers and customers fairly and with respect. **At Integrity, we believe it is essential to live up to our name.**



Third- and fourth-generation Marvin family members active in The Marvin Companies.

From Susan Marvin:

“At Integrity from Marvin Windows and Doors, we didn’t join the fiberglass windows and doors industry – we pioneered it. In 1994, Integrity was born from The Marvin Companies’ century-long heritage of service, craftsmanship and quality with a focus on all-out performance.”

Vice Chair of the Board, Marvin Windows and Doors

TABLE OF CONTENTS

MARVIN HERITAGE & TABLE OF CONTENTS	01
DOORS INTRODUCTION	02
ULTREX® FIBERGLASS	05
WOOD-ULTREX SLIDING FRENCH DOOR	06
WOOD-ULTREX INSWING & OUTSWING FRENCH DOORS	08
WOOD-ULTREX SLIDING PATIO DOOR	10
ALL ULTREX SLIDING PATIO DOOR	12
COLOR AND HARDWARE OPTIONS	14
EXTERIOR TRIM OPTIONS	16
IMPACT COASTAL OPTIONS	17

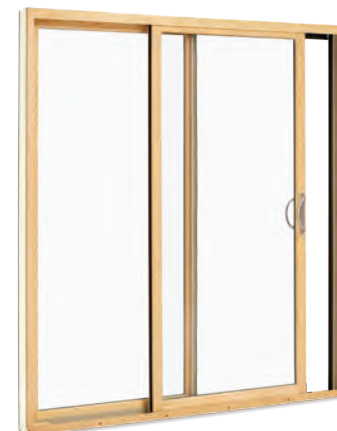
INTEGRITY DOORS



**WOOD-ULTREX
SLIDING FRENCH DOOR**



**WOOD-ULTREX
SLIDING PATIO DOOR**



**WOOD-ULTREX
SWINGING FRENCH DOORS**



**ALL ULTREX
SLIDING PATIO DOOR**



The ultimate combination of beauty and toughness, all Integrity® doors can be customized to accent any home design with multiple exterior color choices, hardware styles and finishes, custom sizes and divided lite patterns. With a variety of screen and insulated glass options, Integrity doors are Built to Perform® in any climate with tough, low-maintenance Ultrex® fiberglass exteriors featuring the industry's best fiberglass finish. Sliding French Doors are available in 2, 3 and 4 panel configurations; Inswing and Outswing French Doors are available in 1 and 2 panel configurations.



ULTREX FIBERGLASS

THE ULTREX FIBERGLASS DIFFERENCE

Integrity® doors are built with Ultrex®, a highly durable, state-of-the-art, fiberglass that significantly outlasts and outperforms vinyl and vinyl/wood composites in virtually every way. This pioneering technology benefits from over 20 years of proven performance. To survive the wear and tear of daily life, doors need to be built strong, and vinyl is not very strong. With a high rate of expansion and contraction, it can get soft and brittle with changing temperatures. This can lead to sagging headers, seal failures, stress cracks and poor operation. Vinyl/wood composites, like Fibrex®, are 60% vinyl infused with wood fibers and struggle from the same durability and performance issues as their vinyl counterparts.

8X
STRONGER
THAN VINYL

UNRIVALED STRENGTH

Ultrex fiberglass is as strong as steel. That means the material we use to make Integrity doors is 8 times stronger than vinyl and 3 times stronger than vinyl/wood composites. Our unrivaled strength allows for narrower frames and bigger views. Our material also bends and flexes less, to maintain seals and ensure durability, year after year.

FIRST AND ONLY
AAMA VERIFIED
624-10 FINISH

SUPERIOR FINISH

Integrity doors have an industry-leading, AAMA 624-10 verified finish that resists scratches, chalking and fading, even with dark exterior colors. Unlike the competition, Ultrex's finish is 100% paintable to match any home without impacting the performance. This results in a door finish that is virtually maintenance-free, so you spend less time worrying about your doors.

15% LOWER
ENERGY COSTS

ENERGY EFFICIENCY

Ultrex fiberglass expands and contracts at virtually the same rate as glass to resist seal failures that can compromise energy efficiency. Our doors have earned ENERGY STAR® certification to save you 12% in energy costs.

Pultruded fiberglass is made of thin strands of strong glass cables that are saturated with specially compounded resins to create a remarkably durable material.

The patented finishing process applies an impermeable and AAMA verified factory finish up to 3x thicker than competitive finishes, making Ultrex 5x more resistant to ultraviolet (UV) degradation over time. Available in Stone White, Pebble Gray, Cashmere, Bronze, Evergreen or Ebony. It can be painted with no impact on its protective properties.

The patented and advanced thin wall construction technologies of Ultrex allow for detailed profiles and component optimization.



Ultrex fiberglass. Quite possibly the perfect building material.®

THE WOOD-ULTREX SLIDING FRENCH DOOR



**WOOD-ULTREX SLIDING FRENCH DOOR
ALSO AVAILABLE IN COASTAL RATED IZ3.**
See page 17 for more details.

Wood-Ultrex® Sliding French Door: Outfitted in an impossibly strong (and virtually maintenance free) Ultrex fiberglass exterior, it's as effective as it is elegant. Inside, the door's luxe wood interior elevates any space, while the extra-wide format – choose from 2, 3 or 4 panels – means expansive views and generous floods of light.



KEY BENEFITS

- Low-maintenance Ultrex® fiberglass exterior; rich wood interior
- Dual ball-bearing rollers for smooth operation
- Configurations of 2, 3 or 4 panels, up to 8' tall and 16' wide
- Dual-point lock for performance and security
- Bronze or beige sill options available

WOOD-ULTREX INSWING & OUTSWING FRENCH DOORS



Wood-Ultrex® Swinging French Doors: Gorgeous, unobstructed views from a door height of up to 8', along with rich pine interiors to enhance the world around you. Wood-Ultrex doors can be stained or painted to achieve the custom look you desire. But beauty doesn't sacrifice toughness, because the durable Ultrex fiberglass exterior stands up to the changing seasons and offers strength where you need it most.



KEY BENEFITS

- Low-maintenance Ultrex® fiberglass exterior; rich pine interior
- Secure and stable stainless steel multi-point locking system
- Precision built in special sizes in 1/64" increments
- Tempered, insulated glass with argon gas
- Available in 1, 2 or 3 panel configurations (IZ only 1 and 2 panel)
- Multiple configurations up to 8' tall
- Bronze or beige sill options available
- Performance Grade (PG50) standard on Outswing (optional upgrade on Inswing)



**WOOD-ULTREX SWINGING FRENCH DOORS
ALSO AVAILABLE IN COASTAL RATED IZ3.**

See page 17 for more details.

WOOD-ULTREX SLIDING PATIO DOOR



Wood-Ultrex® Sliding Patio Door: With rich pine interiors that can be stained or painted to match your home's custom interior and an Ultrex fiberglass exterior, the Wood-Ultrex Sliding Patio Door is both functional and refined. Standard features include a top-hung screen that operates smoothly and doesn't jam - making sticky screen doors a thing of the past. Narrow stiles and rails achieve a contemporary styling.



KEY BENEFITS

- Low-maintenance Ultrex® fiberglass exterior; rich pine interior
- 2 and 3 panel configurations
- Precision built in special sizes in 1/64" increments
- Top-hung screen door operates smoothly without jamming
- Tempered, insulated glass with argon gas
- Optional transoms for a dramatic look

ALL ULTREX SLIDING PATIO DOOR



All Ultrex® Sliding Patio Door: The strength of Ultrex fiberglass protects both sides of this stylish door to deliver durability and beautiful views with clean, contemporary sightlines. The strength of Ultrex resists sagging and alignment issues that often plague vinyl patio doors.



KEY BENEFITS

- Ultrex® fiberglass construction stays square and true
- 2 and 3 panel configurations up to 8' tall
- Available in special sizes precision built in 1/64" increments
- Top-hung screen operates smoothly without jamming
- Two handle collections, five handle finishes, keyed and keyed-alike options provide design and functional flexibility

COLOR AND HARDWARE OPTIONS

We're obsessed with making the best-performing materials and products - but they should look stunning too. That's why our doors are designed with customization in mind.

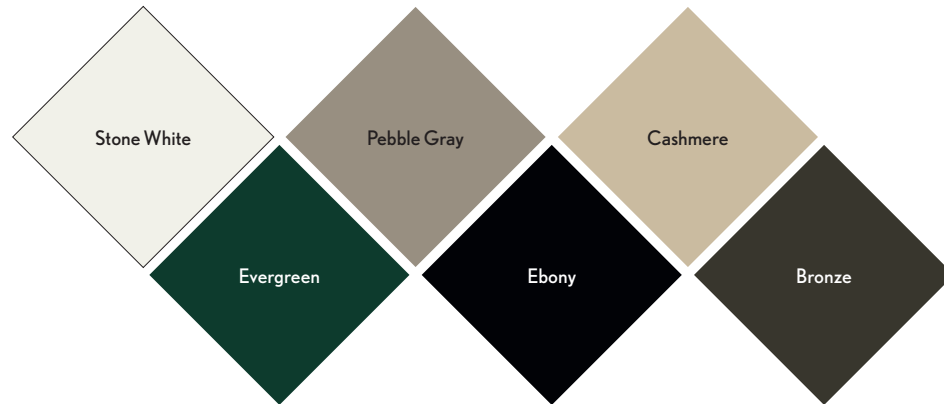
INTERIOR FINISHES

Pre-finished white or bare wood that can be custom stained or painted to match your interior.

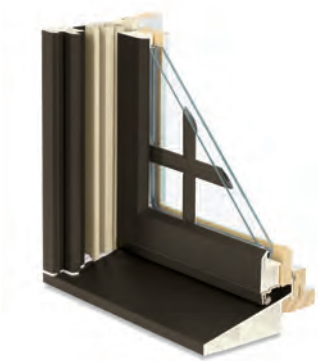


ULTREX® FIBERGLASS EXTERIOR FINISHES

6 exterior Ultrex finishes. And don't forget: unlike most competitors, Ultrex can be painted to fit any home build.



DIVIDED LITES



Grilles-Between-the-Glass (GBG) shown in Bronze



Removable Wood Interior Grilles shown in Bare Wood



Simulated Divided Lite (SDL) shown in Pebble Gray (with or without spacer bar)

GLAZING

Doors come standard with tempered Low E2 insulating glass with argon gas. Optional Low E1, Low E3 and Low E3/ERS* for superior performance and long-term energy cost savings are also available. Variable thickness glass provides enhanced STC and OITC sound abatement performance.

* Low E3/ERS available on All Ultrex only.

DOOR HARDWARE

Integrity® door hardware is available in five finish options, including three Physical Vapor Deposition (PVD) metal finish options. Select distinct interior and exterior handle colors, available with keyed-alike locking cylinders for multiple doors in the same home.

The Northfield Collection

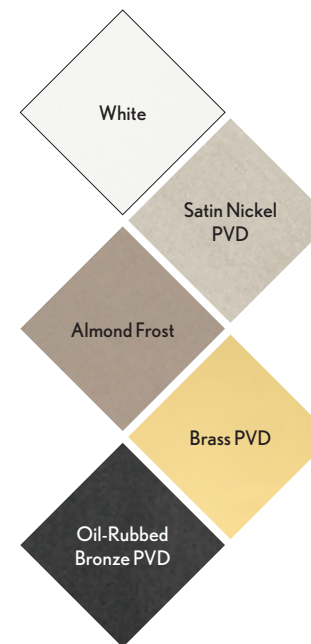


The Cambridge Collection



HANDLE FINISHES

Add the finishing touch to your Integrity doors with a variety of hardware finish options.



ADJUSTABLE HINGE FINISHES

	Inswing French Door	Outswing French Door
Almond Frost		
Goldtone		
White		
Pebble Gray		
Gray		
Cashmere		
Dark Brown		
Evergreen		
Brass PVD		
Satin Nickel PVD		
Oil Rubbed Bronze PVD		

EXTERIOR TRIM OPTIONS

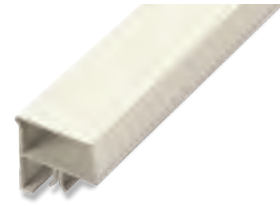
FLAT



BRICK MOULD



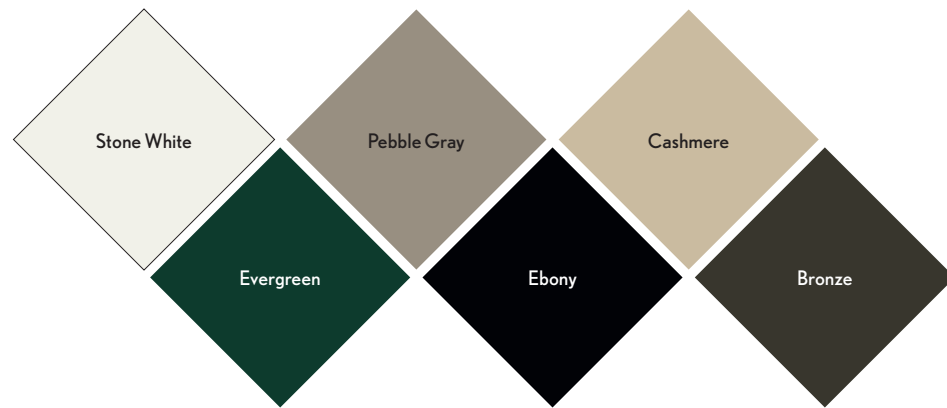
SILL NOSE



Integrity® Windows and Doors' exterior trim is made of Ultrex® fiberglass versus wood, vinyl or composite. Ultrex pultruded fiberglass features our AAMA 624-10 verified acrylic finish for low maintenance, durability and superior aesthetics.

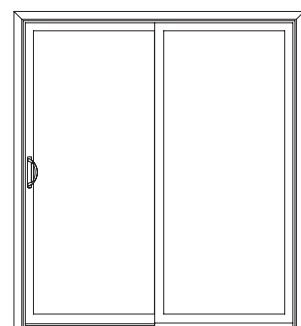
TRIM COLORS

Match your exterior finish or add a special touch with a contrasting trim.

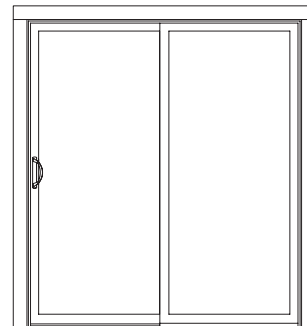


TRIM PATTERNS

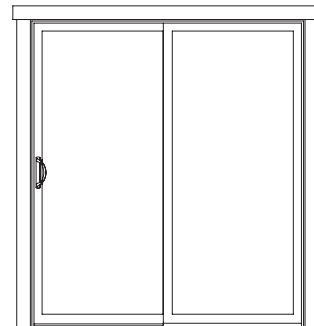
Select a customized trim pattern to create a dynamic look that will enhance the appearance of the entire home.



Brick Mould



Flat



Flat Ranch

IMPACT COASTAL OPTIONS

Ultrex's strength, minimal expansion/contraction and superior resistance to heat, UV degradation and corrosion mean that IMPACT doors won't only stand up to the storm – they will stand up to time.

WOOD-ULTREX
IMPACT OUTSWING
FRENCH DOOR



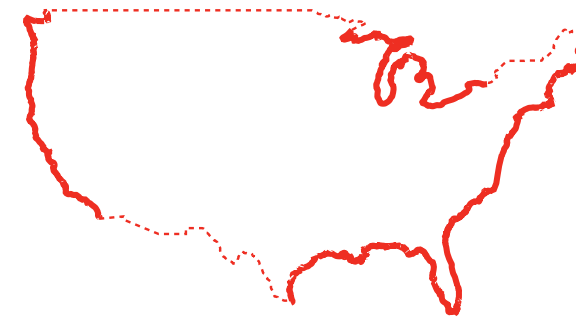
WOOD-ULTREX
IMPACT INSWING
FRENCH DOOR



WOOD-ULTREX
IMPACT SLIDING
FRENCH DOOR



THE IZ3 (IMPACT ZONE 3) icon indicates that the doors have passed every extensive test required to be used in Atlantic and Gulf Coast hurricane zones. IZ3 doors will hold up against winds from 120-140mph, have undergone intense pressure testing, and can withstand a hit from an 8-foot-long 2x4 stud moving 50 feet per second.



Coastal performance options and hardware packages available for areas that endure tough coastal conditions but don't require Impact rated glass.



Homes and buildings along the coast need the durability of Integrity doors made with Ultrex® fiberglass.



 **Integrity**
from **MARVIN**
Windows and Doors
Built to perform.®

MARVIN 
Windows and Doors
Built around you.®

Integrity is backed by The Marvin® Companies' century-long heritage of service, craftsmanship and quality with a focus on all-out performance.