



1Y0-241 Deploy and Manage Citrix ADC with Traffic Management

Exam Preparation Guide 1.0

September 21, 2020

Disclaimer

This exam preparation guide is designed to provide candidates with necessary information about the 1Y0-241 exam, including study resources and ways to interpret the exam objectives to better enable candidates to assess the types of questions that may be asked during the exam. Please be aware that the content of this guide in no way ensures a passing score on the certification exam.



Table of Contents

Exam Overview

Number of Items	4
Passing Score	4
Time Limit	4
Intended Audience	4
Registration and Administration	4
Retake Policies	5

Preparing for the Exam

Recommended Knowledge and Skills	6
Recommended Product Experience	7
Recommended Training	7
Unauthorized Preparation Materials	7
Section Titles and Weights	8
Interpretation of Objectives	9
Sections, Objectives and References	10
Appendix: Practice	22

Contributors & Marks

Prep Guide Author	25
Subject Matter Experts (SMEs)	25
Notice	26
Marks	26

Exam Overview

Number of Items

The 1Y0-241 exam is a 64-question exam written in English. Some of the items on this exam will not be scored and thus will not affect your final result in any way. The unscored items are included in this exam solely for research purposes.

Passing Score

The passing score for this exam is 61%.

Time Limit

Type of Candidate	Time Limits*	Notes
Native English speakers	90 minutes	
Non-native English speakers that take the exam in countries where English is a foreign language	90 minutes +30 minutes (time extension)	Time extension granted automatically
Non-native English speakers that take the exam in countries where English is NOT a foreign language	90 minutes +30 minutes (time extension)	Must request time extension from Citrix. Submit your request here: Time Extension Request

The total time limit for this exam is 125 minutes. The total seat time is 90 + 35 minutes. The total seat time includes times allotted for the NDA and surveys.

Intended Audience

The 1Y0-241 exam was developed to measure the minimum knowledge and skills required to implement Citrix ADC 13 solutions. Passing this exam means a candidate demonstrated the minimum requisite knowledge and skills required of Citrix networking professionals who can install, configure and/or operate Citrix ADC 13 in enterprise environments. The tasks tested in this exam will represent those skills, which are deemed most important, based on high criticality ratings, to perform the job of networking and traffic optimization with Citrix ADC.

Primary Audience:

- Network Administrators
- Network Engineers
- Citrix Administrators
- Operations Engineer
- Systems Engineers /Systems Administrators
- Cloud Administrators/Engineers

Registration and Administration

This exam is administered at Pearson VUE testing centers worldwide. To learn more about the rules and process of taking an exam, please visit <http://training.citrix.com/exams>.

Worldwide, visit the Pearson VUE website (<http://www.pearsonvue.com/citrix>) to locate a testing center in your area and register for an exam OR to take exam from Home or Office (Online remote proctoring) . You may also register in person at any Pearson VUE testing center. If you reside in the United States or Canada, you may also register by calling 1-800-931-4084.

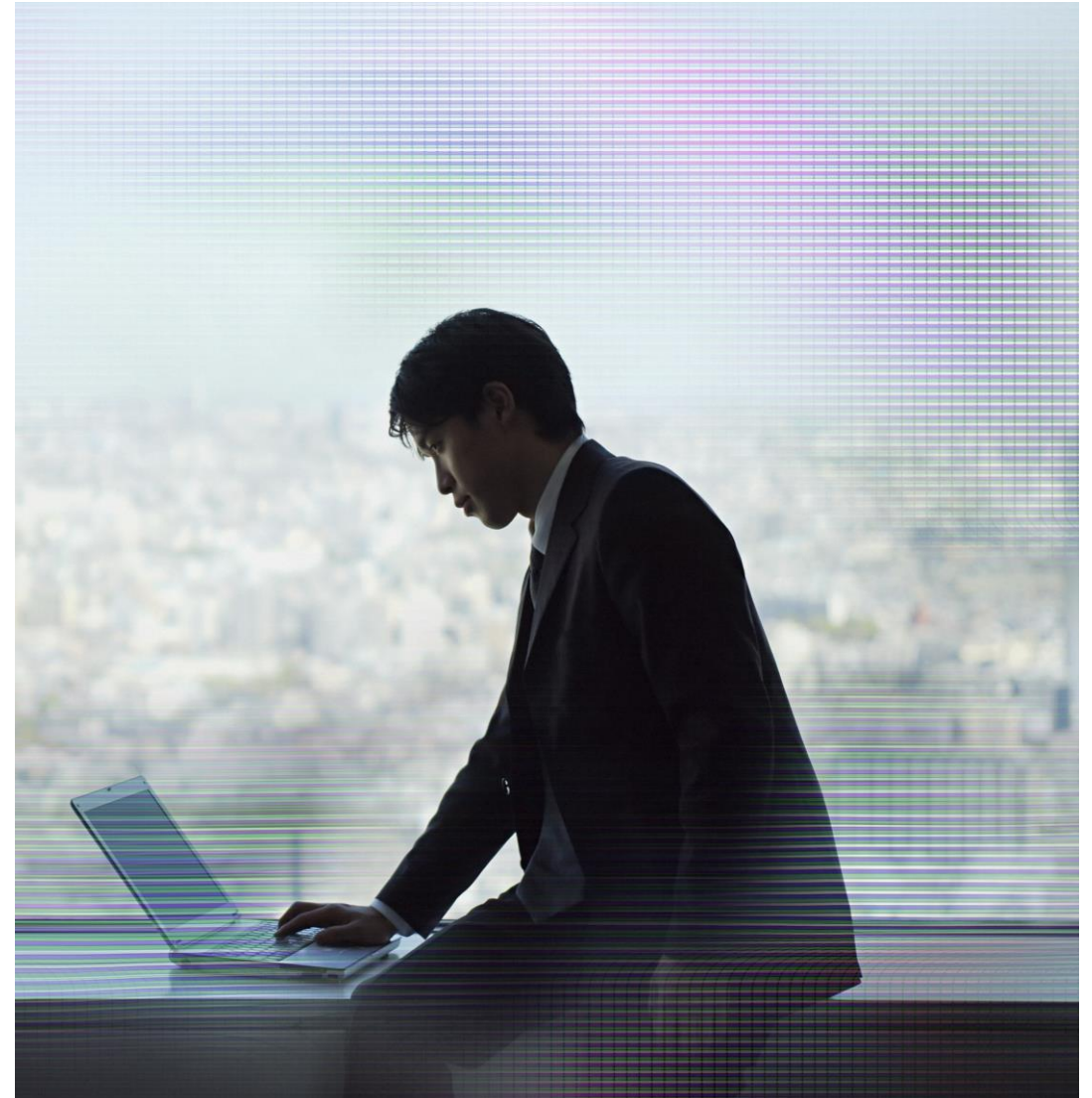
Note: A \$7 USD surcharge will be added to phone registrations.

Retake Policy

Candidates must wait 24 hours from their original appointment time before they can register to retake an exam. After a second attempt, and any attempt thereafter, the candidate must wait 14 calendar days to retake the exam.

Breach of this policy can result in sanctions up to and including a ban from taking Citrix exams and/or decertification.

For more information about our policies, including the Citrix Exam Retake Policy and the Candidate Conduct Policy, please visit <http://training.citrix.com/exams>



Prepping for the Exam

Recommended Knowledge and Skills

Candidates should have knowledge of the following prior to taking this exam:

- Basic Networking
- Windows and Linux Server administration
- TCP/IP, HTTP protocols and the OSI model
- Server load balancing and content switching concepts
- Web server software
- DNS, SSL and compression concepts
- Network security threats and site protection concepts

Recommended Product Experience

We recommend that candidates have about six months of experience with the following topics in a Citrix ADC 13 solution:

- Getting Started with Citrix ADC
- Basic Networking
- Citrix ADC Platforms
- High Availability
- Load Balancing
- SSL Offload
- Securing the Citrix ADC
- Troubleshooting Citrix ADC
- Default Policies
- Rewrite, Responder, and URL Transform
- Content Switching
- Traffic Optimization
- Global Server Load Balancing

Recommended Training

Citrix Education recommends that candidates have hands-on experience with Citrix ADC and above, prior to taking this exam. One of the best ways to do this is by taking a formal Citrix training course. The following course provides training on Citrix ADC 13 Essentials and Citrix ADC Traffic Management solutions.

- [CNS 225 Deploy and Manage Citrix ADC 13.x with Traffic Management](#)

As with all Citrix exams, it is recommended that candidates get hands-on experience by working directly with products covered on the exam.

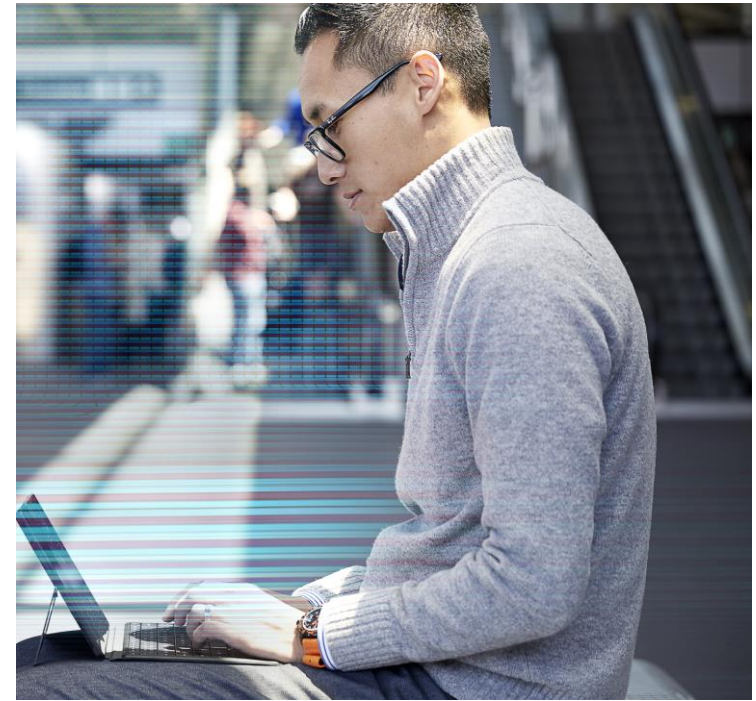
Unauthorized Preparation Materials

Citrix Education monitors exam results to ensure that candidates are not using unauthorized materials to prepare for exams. If it is determined that a candidate used unauthorized materials to prepare for an exam, the candidate's score will be invalidated and his or her certification will be revoked.

When looking for materials in addition to authorized Citrix training to prepare for certification, Citrix Education recommends that you visit <http://www.certguard.com> to ensure that a site is indeed legitimate. This site flags websites that are acting as brain dumps, which have unauthorized materials.

Section Titles and Weights

Section	Weight
Section 1: Getting Started	6%
Section 2: Basic Networking	8%
Section 3: Citrix ADC Platforms	5%
Section 4: High Availability	6%
Section 5: Load Balancing	8%
Section 6: SSL Offload	9%
Section 7: Securing the Citrix ADC	8%
Section 8: Troubleshooting	9%
Section 9: Default Policies	11%
Section 10: Rewrite, Responder, and URL Transform	11%
Section 11: Content Switching	5%
Section 12: Optimization	3%
Section 13: Global Server Load Balancing	11%
TOTAL	100%



The section weights included in this guide are intended to help you in understanding how much of the exam is devoted to the topics listed. In fact, the percentages directly map to the number of questions on the exam. For example, if an exam has 60 questions, and Section 1 is weighted at 50%, then 30 of the questions on the exam will relate to Section 1 ($60 \times 50\% = 30$).

Please be warned that section weights are NOT used to calculate your score. Scoring is far more complicated as exam questions may be given different weights based on their overall importance. Because some questions may have different point values assigned to them, section weights and exam scores do not always have a one-to-one correlation.

For more information on how scoring works in Citrix exams read the blog [The Scoring Secrets for Citrix Exams - Divulged](#).

Interpretation of Objectives

Candidates should refer to the objectives and examples listed in this guide in order to determine which topics will be on the exam, as well as examples of the topics that could be tested.

For example, if the objective reads “Configure monitors” and one of the examples reads, “determine when to use which type of monitor,” exam-takers could expect to see:

- A question that requires determining which type of monitor to configure...
 - *Which type of monitor should a Citrix Administrator configure...*
- ...based on given requirement(s)
 - *...to validate that a specific text string is returned in a web server response?*

Note: The examples listed in the “Sections, Objectives, Examples and References” section of this guide do NOT encompass all potential topics that could be tested. The examples are only provided as guidance.

The objectives and examples for this exam were developed by Exam Project Managers and Subject Matter Experts (SMEs) based on identified tasks that related to installing, configuring and/or operating NetScaler 12 in enterprise environments.

The number of questions written for each objective relates directly to the importance of that objective and is proportional to how frequently that task is performed.

Sections, Objectives and References

- Citrix Product Documentation: <http://docs.citrix.com>
- Citrix Support: <http://www.citrix.com/support>
- Citrix Blogs: <http://blogs.citrix.com/>

Objective Number	Objective	References
Section 1: Getting Started		
1.01	Understand the Citrix ADC architecture and functionality.	CNS-225 Deploy and Manage Citrix ADC 13.x with Traffic Management (Module 1 and 2) https://www.citrix.com/blogs/2012/03/08/connection-multiplexing-in-netscaler/ https://docs.citrix.com/en-us/citrix-adc/13/networking/ip-addressing/enabling-use-source-ip-mode.html
1.02	Identify Citrix ADC hardware and its components.	CNS-225 Deploy and Manage Citrix ADC 13.x with Traffic Management (Module 1 and 3) https://docs.citrix.com/en-us/citrix-hardware-platforms/mpx/netscaler-hardware-platforms/mpx-11515-11520-11530-11540-11542.html https://www.citrix.com/content/dam/citrix/en_us/documents/data-sheet/citrix-adc-data-sheet.pdf https://docs.citrix.com/en-us/citrix-gateway/13/licensing/ng-license-platform-universal-con.html
1.03	Determine the deployment and licensing options for a given environment.	CNS-225 Deploy and Manage Citrix ADC 13.x with Traffic Management (Module 1 and 2) https://www.citrix.com/blogs/2018/06/20/citrix-networking-a-licence-to-thrill/
1.04	Determine how to setup and configure Citrix ADC.	CNS-225 Deploy and Manage Citrix ADC 13.x with Traffic Management (Module 2) https://docs.citrix.com/en-us/citrix-adc/13/getting-started-with-citrix-adc/configure-system-settings/configure-modes-packet-forwarding.html https://docs.citrix.com/en-us/citrix-adc/13/system/basic-operations/configuring-clock-synchronization.html

Objective Number	Objective	References
Section 2: Basic Networking		
2.01	Determine which networking topology to use with Citrix ADC based on given requirements.	CNS-225 Deploy and Manage Citrix ADC 13.x with Traffic Management (Module 2) https://docs.citrix.com/en-us/citrix-adc/13/getting-started-with-citrix-adc/network-topologies.html https://docs.citrix.com/en-us/netScaler/12/networking/interfaces/configuring-link-aggregation.html
2.02	Determine which interfaces IP address types and VLANs to use during configuration of a given environment.	CNS-225 Deploy and Manage Citrix ADC 13.x with Traffic Management (Module 2) https://docs.citrix.com/en-us/citrix-adc/13/networking/interfaces/understanding-vlans.html https://www.citrix.com/blogs/2018/07/23/separating-netScaler-management-and-data-traffic-for-disasters
2.03	Identify which Citrix ADC routing and traffic-handling mode should be used for a given environment	CNS-225 Deploy and Manage Citrix ADC 13.x with Traffic Management (Module 2) https://docs.citrix.com/en-us/citrix-adc/13/getting-started-with-citrix-adc/configure-system-settings/configure-modes-packet-forwarding.html https://docs.citrix.com/en-us/citrix-adc/13/networking/interfaces/configuring-mac-based-forwarding.html
2.04	Determine how to configure Access Control Lists based on given requirements.	CNS-225 Deploy and Manage Citrix ADC 13.x with Traffic Management (Module 2) https://docs.citrix.com/en-us/citrix-adc/13/system/basic-operations.html https://docs.citrix.com/en-us/citrix-adc/13/networking/access-control-lists-acls/extended-acls-and-extended-acl6s.html

Objective Number	Objective	References
Section 3: Citrix ADC Platforms		
3.01	Determine which hardware to use (Citrix ADC MPX, VPX, CPX, BLX or SDX) when given a use case.	CNS-225 Deploy and Manage Citrix ADC 13.x with Traffic Management (Module 3) https://docs.citrix.com/en-us/citrix-adc-cpx/13/about.html https://docs.citrix.com/en-us/citrix-hardware-platforms/sdx/hardware-platforms.html
3.02	Identify the pieces of the multi-tenant structure for Citrix ADC SDX.	CNS-225 Deploy and Manage Citrix ADC 13.x with Traffic Management (Module 3) https://docs.citrix.com/en-us/sdx/13/manage-monitor-appliance-network-configuration/managing-interfaces.html https://docs.citrix.com/en-us/sdx/13/single-bundle-upgrade/upgrade-netScaler-instance.html
3.03	Determine the specific function of the SDX when given various SDX interface allocation scenarios	CNS-225 Deploy and Manage Citrix ADC 13.x with Traffic Management (Module 2 and 3) https://docs.citrix.com/en-us/sdx/13/configuring-managing-netScaler-instance/configuring-l2-mode-on-netScaler-instance.html https://docs.citrix.com/en-us/sdx/13/configuring-management-service/configuring-channel-from-management-service.html https://docs.citrix.com/en-us/sdx/13/configuring-management-service/configuring-link-aggregation.html https://support.citrix.com/article/CTX134962
Section 4: High Availability		
4.01	Understand how the high availability (HA) process works on Citrix ADC.	CNS-225 Deploy and Manage Citrix ADC 13.x with Traffic Management (Module 4) https://docs.citrix.com/en-us/citrix-adc/13/system/high-availability-introduction.html https://docs.citrix.com/en-us/citrix-adc/13/system/high-availability-introduction/configuring-virtual-mac-addresses-high-availability.html https://docs.citrix.com/en-us/citrix-adc/13/upgrade-downgrade-citrix-adc-appliance/upgrade-downgrade-HA-pair.html https://support.citrix.com/article/CTX208384

Objective Number	Objective	References
4.02	Determine the appropriate Citrix ADC high availability configuration options, including advanced settings, given a description of an environment.	CNS-225 Deploy and Manage Citrix ADC 13.x with Traffic Management (Module 4) https://docs.citrix.com/en-us/citrix-adc/13/system/high-availability-introduction/configuring-high-availability-nodes-different-subnets.html https://docs.citrix.com/en-us/citrix-adc/13/system/high-availability-introduction/forcing-the-primary-node-stay-primary.html
4.03	Determine which method should be used to manage a Citrix ADC high availability configuration given a scenario.	CNS-225 Deploy and Manage Citrix ADC 13.x with Traffic Management (Module 4) https://docs.citrix.com/en-us/citrix-adc/13/system/high-availability-introduction/high-availability-faqs.html https://docs.citrix.com/en-us/citrix-adc/13/system/high-availability-introduction/configuring-fail-safe-high-availability.html
4.04	Determine how to resolve common high availability issues.	CNS-225 Deploy and Manage Citrix ADC 13.x with Traffic Management (Module 4) https://docs.citrix.com/en-us/citrix-adc/13/system/high-availability-introduction/troubleshooting-high-availability.html https://docs.citrix.com/en-us/citrix-adc/13/getting-started-with-citrix-adc/configure-ha-first-time.htm https://support.citrix.com/article/CTX204685

Objective Number	Objective	References
Section 5: Load Balancing		
5.01	Identify the Citrix ADC load-balancing role of entities.	CNS-225 Deploy and Manage Citrix ADC 13.x with Traffic Management (Module 5) https://docs.citrix.com/en-us/citrix-adc/13/load-balancing/load-balancing-manage-setup/managing-server-objects.html https://docs.citrix.com/en-us/citrix-adc/13/load-balancing/load-balancing-customizing/assign-weight-services.html
5.02	Determine when to use the different load-balancing and monitoring options available on the Citrix ADC.	CNS-225 Deploy and Manage Citrix ADC 13.x with Traffic Management (Module 5) https://support.citrix.com/article/CTX209292 https://docs.citrix.com/en-us/citrix-adc/13/load-balancing/load-balancing-custom-monitors/configure-user-monitor.html https://docs.citrix.com/en-us/citrix-adc/13/load-balancing/load-balancing-customizing-algorithms/leastbandwidth-method.html https://docs.citrix.com/en-us/citrix-adc/13/load-balancing/load-balancing-advanced-settings/no-monitor-service.html
5.03	Determine how to customize monitoring and service options based on a scenario.	CNS-225 Deploy and Manage Citrix ADC 13.x with Traffic Management (Module 5) https://docs.citrix.com/en-us/citrix-adc/13/load-balancing/load-balancing-builtin-monitors/monitor-tcp.html https://docs.citrix.com/en-us/citrix-adc/13/load-balancing/load-balancing-builtin-monitors/monitor-tcp.html https://support.citrix.com/article/CTX209292 https://docs.citrix.com/en-us/citrix-adc/13/load-balancing/load-balancing-builtin-monitors/monitor-ldap-services.html

Objective Number	Objective	References
5.04	Determine which method to use to protect and troubleshoot a Citrix ADC load-balancing configuration based on a given scenario.	CNS-225 Deploy and Manage Citrix ADC 13.x with Traffic Management (Module 5) https://support.citrix.com/article/CTX108886
Section 6: SSL Offload		
6.01	Determine the process and requirement for creating and uploading SSL Certificates.	CNS-225 Deploy and Manage Citrix ADC 13.x with Traffic Management (Module 6) https://docs.citrix.com/en-us/citrix-adc/13/ssl/how-to-articles/create-and-use-ssl-certificates-on-a-citrix-adc-appliance.html https://docs.citrix.com/en-us/citrix-adc/13/ssl/config-ssloffloading.html
6.02	Determine how to create SSL virtual servers.	CNS-225 Deploy and Manage Citrix ADC 13.x with Traffic Management (Module 6) https://docs.citrix.com/en-us/citrix-adc/13/getting-started-with-citrix-adc/secure-traffic-using-ssl.html https://docs.citrix.com/en-us/citrix-adc/13/ssl/ssl-certificates/obtain-cert-frm-cert-auth.html https://docs.citrix.com/en-us/citrix-adc/13/ssl/config-ssloffloading.html
6.03	Determine which SSL deployment to use for a given environment.	CNS-225 Deploy and Manage Citrix ADC 13.x with Traffic Management (Module 6) https://docs.citrix.com/en-us/citrix-adc/13/ssl/how-to-articles/end-to-end-encrypt.html https://docs.citrix.com/en-us/citrix-adc/13/ssl/ssl-profiles.html
6.04	Determine which Citrix ADC configuration settings can prevent a given SSL Exploit.	CNS-225 Deploy and Manage Citrix ADC 13.x with Traffic Management (Module 6) https://docs.citrix.com/en-us/citrix-adc/13/ssl/ssl-profiles/ssl-enabling-the-default-profile.html https://docs.citrix.com/en-us/tech-zone/build/tech-papers/networking-tls-best-practices.html

Objective Number	Objective	References
Section 7: Securing the Citrix ADC		
7.01	Determine how to utilize authentication, authorization, and auditing.	CNS-225 Deploy and Manage Citrix ADC 13.x with Traffic Management (Module 7) https://docs.citrix.com/en-us/citrix-adc/13/aaa-tm/configure-aaa-policies.html https://docs.citrix.com/en-us/citrix-adc/13/aaa-tm/ns-aaa-users-and-groups-tsk.html https://docs.citrix.com/en-us/citrix-adc/13/system/ns-ag-aa-intro-wrapper-con/ns-ag-aa-config-users-and-grps-tsk.html
7.02	Determine how to configure authentication and authorization on Citrix ADC.	CNS-225 Deploy and Manage Citrix ADC 13.x with Traffic Management (Module 7) http://docs.citrix.com/en-us/netScaler/13/aaa-tm/authentication-virtual-server/ns-aaa-setup-dns-con.html http://docs.citrix.com/en-us/netScaler/13/aaa-tm/ns-aaa-users-and-groups-tsk.html http://docs.citrix.com/en-us/netScaler/13/aaa-tm/configure-aaa-policies/ns-aaa-setup-policies-authntcn-tsk.html
7.03	Determine the components and steps required to secure a Citrix ADC configuration.	CNS-225 Deploy and Manage Citrix ADC 13.x with Traffic Management (Module 7) http://docs.citrix.com/en-us/netScaler/13/system/ns-ag-aa-intro-wrapper-con/ns-ag-aa-config-users-and-grps-tsk.html https://www.citrix.com/blogs/2014/04/09/activeactive-gslb-for-xendesktop-a-practical-approach-part-1/ http://docs.citrix.com/en-us/netScaler-gateway/13/integrate-web-interface-apps/smart-control.html https://www.citrix.com/blogs/2013/09/19/hdx-insight-integration-with-director/ http://support.citrix.com/article/CTX200430
7.04	Determine how to utilize admin partitions in a given scenario.	CNS-225 Deploy and Manage Citrix ADC 13.x with Traffic Management (Module 7) http://docs.citrix.com/en-us/netScaler/13/admin-partition/admin-partition-benefits-and-uses.html http://docs.citrix.com/en-us/netScaler/13/admin-partition/admin-partition-reuse-identifiers.html

Objective Number	Objective	References
Section 8: Troubleshooting		
8.01	Determine how to resolve Citrix ADC log issues.	CNS-225 Deploy and Manage Citrix ADC 13.x with Traffic Management (Module 8) https://docs.citrix.com/en-us/netScaler/13/application-firewall/logs.html https://support.citrix.com/article/CTX121728
8.02	Determine how to monitor the Citrix ADC environment with Simple Network Management Protocol data.	CNS-225 Deploy and Manage Citrix ADC 13.x with Traffic Management (Module 8) http://docs.citrix.com/en-us/netScaler/13/system/snmp/configuring-snmpv1-snmpv2-queries.html#par_richtext_1 http://docs.citrix.com/en-us/netScaler/13/reference/netScaler-command-reference/snmp/snmp-manager.html
8.03	Determine how to use AppFlow and Citrix Application Delivery Management features to troubleshoot an issue within Citrix ADC.	CNS-225 Deploy and Manage Citrix ADC 13.x with Traffic Management (Module 8) http://docs.citrix.com/en-us/netScaler-mas/13/analytics/HDX-Insight.html http://docs.citrix.com/en-us/netScaler-mas/13/network-reporting.html
8.04	Determine how to use the Citrix Application Delivery Management to troubleshoot a given issue.	CNS-225 Deploy and Manage Citrix ADC 13.x with Traffic Management (Module 8) http://docs.citrix.com/en-us/netScaler-mas/13/netScaler-mas-licensing.html http://docs.citrix.com/en-us/netScaler-mas/13/network-reporting.html http://docs.citrix.com/en-us/netScaler-mas/13/application-analytics-and-management/advanced-analytics.html
8.05	Determine which Citrix ADC troubleshooting tool to use to identify a given issue in an environment.	CNS-225 Deploy and Manage Citrix ADC 13.x with Traffic Management (Module 8) http://docs.citrix.com/en-us/netScaler/13/reference/netScaler-command-reference/utility/nstrace.html

Objective Number	Objective	References
Section 9: Default Policies		
9.01	Determine how to configure Citrix ADC advanced policy expressions.	CNS-225 Deploy and Manage Citrix ADC 13.x with Traffic Management (Module 9) https://docs.citrix.com/en-us/citrix-adc/13/appexpert/policies-and-expressions/introduction-to-policies-and-exp/classic-and-advanced-policy.html
9.02	Determine how to configure actions in policy expression evaluation.	CNS-225 Deploy and Manage Citrix ADC 13.x with Traffic Management (Module 9) http://docs.citrix.com/en-us/netScaler/13/security/content-filtering.html
9.03	Determine which key attributes need to be included in policy binding based on given information.	CNS-225 Deploy and Manage Citrix ADC 13.x with Traffic Management (Module 9) http://docs.citrix.com/en-us/netScaler/13/appexpert/policies-and-expressions/ns-cfa-wrapper-con/ns-cfa-bind-adv-pol-con.html
9.04	Determine how to create default policies with AppExpert.	CNS-225 Deploy and Manage Citrix ADC 13.x with Traffic Management (Module 9) http://docs.citrix.com/en-us/netScaler/13/appexpert/policies-and-expressions/ns-cfa-wrapper-con.html https://docs.citrix.com/en-us/citrix-adc/13/appexpert/policies-and-expressions/advanced-policy-infrastructure/create-policy-labels.html https://docs.citrix.com/en-us/citrix-adc/13/appexpert/responder/setting-responder-default-action.html
9.05	Determine how to use HTTP callouts and rate limiting in a given environment.	CNS-225 Deploy and Manage Citrix ADC 13.x with Traffic Management (Module 9) http://docs.citrix.com/en-us/netScaler/13/appexpert/http-callout.html

Objective Number	Objective	References
Section 10: Rewrite, Responder, and URL Transform		
10.01	Determine how to utilize the rewrite feature for a given environment.	CNS-225 Deploy and Manage Citrix ADC 13.x with Traffic Management (Module 10) https://docs.citrix.com/en-us/citrix-adc/13/appexpert/rewrite/rewrite-action-policy-examples/example-mask-http-server-type.html https://docs.citrix.com/en-us/citrix-adc/13/appexpert/rewrite/how-rewrite-works.html#rewrite-actions
10.02	Determine how to utilize responder policies for a given environment.	CNS-225 Deploy and Manage Citrix ADC 13.x with Traffic Management (Module 10) http://docs.citrix.com/en-us/netScaler/13/appexpert/responder.html https://docs.citrix.com/en-us/netScaler/13/appexpert/responder/responder-action-policy-examples.html
10.03	Determine how to use URL transformation in a given environment.	CNS-225 Deploy and Manage Citrix ADC 13.x with Traffic Management (Module 10) http://docs.citrix.com/en-us/netScaler/13/appexpert/rewrite/url-transformation.html https://docs.citrix.com/en-us/citrix-adc/13/appexpert/rewrite/url-transformation/globally-binding-url-transformation-policies.html
10.04	Determine how to utilize pattern and data sets within a given environment.	CNS-225 Deploy and Manage Citrix ADC 13.x with Traffic Management (Module 10) http://docs.citrix.com/en-us/netScaler/13/appexpert/pattern-sets-data-sets.html
Section 11: Content Switching		
11.01	Determine how to utilize Content Switching components.	CNS-225 Deploy and Manage Citrix ADC 13.x with Traffic Management (Module 11) https://docs.citrix.com/en-us/netScaler/13/content-switching/basic-configuration.html https://docs.citrix.com/en-us/netScaler/13/content-switching/basic-configuration/create-action.html https://docs.citrix.com/en-us/netScaler/13/content-switching/basic-configuration/configure-policies.html

Objective Number	Objective	References
11.02	Determine how to use Content Switching policies in a given environment.	CNS-225 Deploy and Manage Citrix ADC 13.x with Traffic Management (Module 11) http://docs.citrix.com/en-us/netScaler/13/content-switching/basic-configuration.html https://docs.citrix.com/en-us/citrix-adc/13/content-switching/troubleshooting.html
11.03	Determine how rule precedence affects policies.	CNS-225 Deploy and Manage Citrix ADC 13.x with Traffic Management (Module 11) http://docs.citrix.com/en-us/netScaler/13/content-switching/customizing-configuration.html https://docs.citrix.com/en-us/citrix-adc/13/content-switching/protecting-against-failure.html
Section 12: Optimization		
12.01	Determine how to implement traffic compression in a Citrix ADC environment.	CNS-225 Deploy and Manage Citrix ADC 13.x with Traffic Management (Module 12) http://docs.citrix.com/en-us/netScaler/13/optimization/http-compression.html https://docs.citrix.com/en-us/citrix-adc/13/optimization/front-end-optimization.html
12.02	Determine how to configure front end optimization to render the web browser more efficient.	CNS-225 Deploy and Manage Citrix ADC 13.x with Traffic Management (Module 12) http://docs.citrix.com/en-us/netScaler/13/optimization/front-end-optimization/front-end-optimization-samples.html https://docs.citrix.com/en-us/citrix-adc/13/optimization/front-end-optimization.html

Objective Number	Objective	References
Section 13: Global Server Load Balancing		
13.01	Determine how to deploy Domain Name System (DNS) to support GSLB in a given environment.	CNS-225 Deploy and Manage Citrix ADC 13.x with Traffic Management (Module 13) http://docs.citrix.com/en-us/netScaler/13/global-server-load-balancing/how-gslb-works.html
13.02	Determine how to Implement GSLB in a Citrix ADC environment.	CNS-225 Deploy and Manage Citrix ADC 13.x with Traffic Management (Module 13) https://docs.citrix.com/en-us/netScaler/11-1/gslb/configure-gslb-proximity.html
13.03	Determine how to utilize Content Switching to implement GSLB.	CNS-225 Deploy and Manage Citrix ADC 13.x with Traffic Management (Module 13) https://docs.citrix.com/en-us/legacy-archive/netScaler.html https://docs.citrix.com/en-us/citrix-adc/13/global-server-load-balancing/how-to/configure-gslb-content-switch.html
13.04	Determine how to use GSLB metric exchange protocol.	CNS-225 Deploy and Manage Citrix ADC 13.x with Traffic Management (Module 13) http://docs.citrix.com/en-us/netScaler/13/global-server-load-balancing/configuring-metrics-exchange-protocol.html
13.05	Determine how to customize a GSLB configuration based on the needs of an environment.	CNS-225 Deploy and Manage Citrix ADC 13.x with Traffic Management (Module 13) http://docs.citrix.com/en-us/netScaler/13/global-server-load-balancing/methods/configure-dynamic-method-RTT.html http://docs.citrix.com/en-us/netScaler/13/global-server-load-balancing/monitoring.html https://docs.citrix.com/en-us/legacy-archive/netScaler.html

Appendix: Practice

Introduction

Exam-takers should refer to the objectives listed in the “Sections, Objectives, Examples and References” section of this guide in order to determine which topics will be on the exam and examples of topics for each objective.

For example, if the objective reads, "Troubleshoot high availability" and one of the examples reads, “determine how to resolve a given issue”, exam-takers could expect to see:

A scenario describing an issue with high availability -

***Scenario:** A Citrix Administrator is attempting to configure high availability for a Citrix ADC MPX pair. Each Citrix ADC appliance resides in a different subnet. The administrator noticed that network connectivity between the appliances was lost once the high availability pair was established.*

A question that requires determining how to resolve the given issue -

What must the administrator enable to correct this issue?

The objectives for this exam were developed by Exam Project Managers and Subject matter experts based on identified tasks that relate to installing, configuring and/or operating Citrix ADC 12 in enterprise environments.

Sample Question 1

A Network Engineer informed the Citrix Administrator that an interface used by Citrix ADC SDX is being saturated. This interface is used as a Data interface for the Citrix ADC SDX.

Which action could the administrator take to address the bandwidth concerns?

- A. Configure LACP on the SDX for the Data interface.
- B. Configure LACP on the SDX for Management interface.
- C. Add a second interface to each Citrix ADC VPX instance.
- D. Configure a Failover interface set on each Citrix ADC VPX instance.

Answer: A

Objective: Determine the specific function of the SDX when given various SDX interface allocation scenarios

Source: CNS-225 Course, Module-3

Appendix: Practice

Sample Question 2

Which two Content-Switching policy can a Citrix Administrator use to verify if a URL used by a client contains the word "sports"? (Choose two.)

- A. add cs policy CS_Pol_1 -url "/sports/*"
- B. add cs policy CS_Pol_1 -rule HTTP.REQ.IS_VALID
- C. add cs policy CS_Pol_1 -rule "HTTP.REQ.URL.CONTAINS("/sports/*")"
- D. add cs policy CS_Pol_1 -rule "HTTP.REQ.URL.CONTAINS_ANY("sports")"

Answer: AC

Objective: Determine how to use Content Switching policies in a given environment.

Source: Citrix Docs

<http://docs.citrix.com/en-us/netScaler/12/content-switching/basic-configuration.html> and CNS-225 Course, Module 2

Sample Question 3

A Citrix Administrator needs to grant read-only access to a select set of Citrix ADC features. Corporate password security schema must be supported.

Which four steps must the administrator take to complete this task? (Choose four.)

- A. Create an Authentication LDAP server.
- B. Create a Custom Command Policy.
- C. Create an Authentication Policy for LDAP authentication.
- D. Create local system accounts that correspond to Help Desk User Objects in Active Directory.
- E. Configure system groups that correspond to the Groups in Active Directory.
- F. Configure admin partitions.
- G. Bind the built-in read-only command policy to required users/groups.

Answer: ABCE

Objective: Determine the components and steps required to secure a Citrix ADC configuration.

Source: CNS-225 Course, Lab Guide

Appendix: Practice

Sample Question 4

A Citrix Administrator has installed the compression feature on the web servers. The administrator configured the Citrix ADC appliance to remove the 'Accept Encoding' header from all HTTP client requests to offload the compression on the Citrix ADC. However, the administrator observed that data is NOT being compressed by the Citrix ADC, even though the Accept-Encoding header is being removed from all the requests.

What could be the cause of this issue?

- A. Servercmp is disabled on the Citrix ADC.
- B. The Compression Policy needs to be reconfigured.
- C. The rewrite policy is bound at an incorrect bind point
- D. The servers are automatically compressing all responses.

Answer: D

Objective: Determine how to implement traffic compression in a Citrix ADC environment

Source: Citrix Docs

<http://docs.citrix.com/en-us/netScaler/12/optimization/http-compression.html>

Contributors & Marks

Author

Premkumar Mekara

Subject Matter Experts

Abdullah Abdullah

Andres Chavarria

Anton Van Pelt

Arnd Kagelmacher

Chris Rogers

Diego Francés Martínez

Eltjo Van Gulik

Jo Harder

Karthik Mundaje

Mads Petersen

Manny Benitez

Matthew.R. Jones

Mehdi Hamid

Parveen Kumar

Paul Blitz

Richard Faulkner

Rick Bloss

Salem Kebede

Samuel Legrand

Val Bonchev

Notice

Citrix® Systems, Inc. (Citrix) makes no representations or warranties with respect to the content or use of this publication. Citrix specifically disclaims any expressed or implied warranties, merchantability, or fitness for any particular purpose. Citrix reserves the right to make any changes in specifications and other information contained in this publication without prior notice and without obligation to notify any person or entity of such revisions or changes.

© Copyright 2020 Citrix Systems, Inc.

All Rights Reserved. No part of this publication may be reproduced or transmitted in any form or by any means, electronic or mechanical, including photocopying, recording, or information storage and retrieval systems, for any purpose other than the purchaser's personal use, without express written permission of:

Citrix Systems, Inc.
851 W. Cypress Creek Road
Ft. Lauderdale, FL 33309
<http://www.citrix.com>

Marks

The following marks are service marks, trademarks, or registered trademarks of their respective owners in the United States or other countries:

Mark	Owner
Citrix®, Endpoint Management®, Citrix ADC®, NetScaler®, EdgeSight®, ICA®, XenMobile®, App-DNA® and Unidesk® are registered trademarks and Virtual Desktops™, Virtual Apps™, Citrix Hypervisor™, Citrix Provisioning™, XenApp™, Citrix Gateway™, Citrix SD-WAN™, Citrix Presentation Server™, Citrix Provisioning Services™, Citrix Cloud™, Citrix Password Manager™, Citrix Streaming Server™, Citrix Workflow Studio™, XenServer™, XenCenter™, XenMotion™, NetScaler Gateway™, NetScaler SD-WAN™, StoreFront™, XenDesktop™, HDX™, Citrix Receiver™, HDX Insight™, NetScaler App Delivery Controller™ / NetScaler ADC™, NetScaler MAS™, NetScaler MPX™, NetScaler SDX™, NetScaler VPX™, TriScale Clustering™	Citrix Systems, Inc.
Active Directory®, Microsoft®, SQL Server®, SQL Express™, Windows®, Windows Server®, Windows Server 2008™, Windows Server 2008 R2™, Windows Server 2012™, Windows Server 2012 R2™, Windows 7™, Windows 8™, Windows 10™	Microsoft Corporation