

2-DAY PUBLIC AUCTION

State-of-the-Art Precision Machining Facility & IP



DAY 1: Tuesday, February 28 @ 9:00am CST (ONSITE & WEBCAST AUCTION – Primary Assets)

DAY 2: Wednesday, March 1 @ 11:00am CST (ONLINE ONLY AUCTION – Office & Inspection Equip. and Memorabilia)

LOCATION: 8200 North Faulkner Road, Milwaukee, WI 53224

PREVIEW: Monday, February 27, from 9:00am to 4:00pm CST

REGISTER & BID AT: hyperams.com



HYPERAMS
asset maximization services

For Info: Burdette Wilber at (314) 616-8422
or Visit Website: www.hyperams.com

Jeffrey L. Luggen WI Lic. #1148-052 • Joseph M. Luggen WI Lic. #2923-52

Sale in Partnership with:
The logo for Cincinnati Industrial Auctioneers features a stylized 'CIA' in blue and green. To the right of the logo, the text 'CINCINNATI INDUSTRIAL AUCTIONEERS' is written in blue capital letters, and 'auctioneers | appraisers | since 1961' is written in smaller blue text below it.

CINCINNATI
INDUSTRIAL
AUCTIONEERS
auctioneers | appraisers | since 1961

BID ONLINE AT:
BidSpotter.com

DAY 1: ONSITE & WEBCAST AUCTION — Tuesday, February 28

CNC VERTICAL TURNING CENTERS

- **2015 FIVES G&L V1250 48" VERT. TURNING CENTER**, Table Diameter 1250mm/49.2", Max Swing 65", Height Table to Ram Max 57.25", Height Table to Ram Min 31.5", Z Axis Travel-55.1", X Axis Travel-17.7"-32.5", Table Speed Low Range 1-52.3 RPM, High Range 1-200 RPM, Table Drive S3-60% 45kw/60HP-S1-100% 37kw/50 HP, Milling Spindle Speed 1-3000 RPM, Spindle Drive S3-60% 18.5 kW/24.8 HP-S1-100% 15kW/20 HP S/N-324-0001-15, Rapid Traverse Rate-X Axis 472 ipm, Rapid Traverse Rate Z Axis 393 ipm, Thrust X and Z 4,946 ft-lbs, Rail Elevating Rate 31.5 ipm, S/N 324-0001-5
- **2000 GIDDINGS & LEWIS 180 VTC CNC VERT. TURNING CENTER**, Ram with ATC, 138" 4-Jaw Table, 184" Swing, 101" Under Rail, G&L 8000 CNC Controls, 180" Dia., Sub-Table, S/N 520-0019-2000
- **2004 GIDDINGS & LEWIS SERIES 515 CNC VERT. TURNING CENTER**, Ram with 12-Station ATC, 96" Table, 112" Swing, 92" Under Adjustable Rail, G&L 8000 Control, 100 HP S/N 515-0038-04
- **2007 GIDDINGS & LEWIS VTC 3500 CNC VERT. TURNING CENTER**, 2-Rams each with 26-Station ATC, 137.8" 4-Jaw Table, Max Facing Cap. 145.7", Max Swing 145.7", Height Table to Ram 98.4", Min Table to Ram 39.4", Low Range Table Speed 9-37/High Range 37-130, C Axis Max RPM 1.6, Table Drive Motor S6-40%/S1-100% 108/75kw/145/100HP, Milling Spindle Speeds Low Range 240-1000/High Range 944-4000, X Axis Travel 2060/81.1", Z Axis Travel 68.9", Ram Head-4 Axis Minimum Distance Between Ram Centerlines 1200/47.2", Rapid Traverse Rate 20,000mm/min/ 787"/min, Thrust X and Z 34,000Nm/7600lb, Rail Elevating Rate 800mm/min /31.5 in/min, Siemens Sinumerik CNC Control, S/N 526-0002
- **1999 GIDDINGS & LEWIS VTC 84 CNC VERT. TURNING CENTER**, Ram with ATC, 84" 4-Jaw Table, 96" Swing, 82" Turning Height, 83" Under Rail, G&L 8000 CNC Controls, S/N 515-0031-99



G&L V1250 CNC VERTICAL TURNING CENTER



G&L 180 VTC VERTICAL TURNING CENTER



G&L SERIES 515 CNC VERTICAL TURNING CENTER



G&L VTC3500 CNC VERTICAL TURNING CENTER



G&L VTC 84 CNC VERTICAL TURNING CENTER

State-of-the-Art Precision Machining Facility & IP

CNC HORIZONTAL BORING MILLS

- **2007 GIDDINGS & LEWIS PT 1800 CNC HORIZONTAL BORING MILL**, 5.1" Spindle Diameter, 70.9" x 165.4" T-Slotted Table, Allowable Load 88,200 lbs, 90 Tool ATC, X-165.4", Y-139.7", W-98.4", Power S1./S6-40 40/60 HP (30/45kw), Spindle Speeds to 3500 RPM, B-Axis Capable Siemens 840D CNC Control, 90 Degree Milling Head, S/N 480-0088
- **1995 GIDDINGS & LEWIS G50T CNC TABLE TYPE HORIZONTAL BORING MILL**, 5" Spindle Dia., ATC, X-168", Y-120", Z-48", 72" x 168" Table, 40 HP, with 74" x 74" Toyke B-Axis Rotary Table, G&L 8000M CNC Control, S/N 050-4412-95
- **GIDDINGS & LEWIS 70A-DP5-T FRASER TABLE TYPE HORIZONTAL BORING MILL**, 5" Spindle Dia., 60" x 120" Table, X-108", Y-72", Z-36", 3-Axis DRO, Pendant, #50 Taper, Power Tool Lock, 10-975 RPM, S/N 150-939
- **GIDDINGS & LEWIS 340T TABLE TYPE HORIZONTAL BORING MILL**, 4" Spindle Diameter, 48" x 86" Table, X-72", Y-48", Z-29", W-40", 20 HP, 10 to 1300 RPM, 3-Axis DRO, Tailstock, S/N 7230

CNC BRIDGE MILL

- **2011 MIGHTY VIPER PRO-3210 AG CNC BRIDGE MILL**, Hartol Fanuc A1300 CNC Control, 60 Tool ATC, Right Angle Head, 80" x 126" T-Slotted Table, X Axis 120", Y Axis 82", Z Axis 42", 90 Degree Head (turns in 5 degree increments), Coolant, S/N 015962



G&L PT 1800 CNC HORIZONTAL BORING MILL



G&L G50T CNC TABLE TYPE HORIZONTAL BORING MILL



G&L 70A-DP5-T FRASER TABLE TYPE HORIZONTAL BORING MILL



MIGHTY VIPER PRO-3210 AG CNC BRIDGE MILL

IMPORTANT AUCTION NOTICE: Although information has been obtained from sources deemed reliable, the auctioneer makes no warranty or guarantee, expressed or implied, as to the accuracy of the information herein contained. It is for this reason that buyers should avail themselves of the opportunity to make inspection prior to the sale. This brochure is intended to provide general information of the equipment being offered and is subject to errors, omissions, additions or deletions. Please check with the Auctioneer's Office for a final listing. Items offered may or may not necessarily be sold as described and/or photographed in this brochure.

BID ONLINE AT:
BidSpotter.com

DAY 1: ONSITE & WEBCAST AUCTION — Tuesday, February 28



DANOBAT RT-1500B COMBINATION HORIZONTAL/VERTICAL SURFACE AND WAY GRINDER



DANOBAT RT 2500 HORIZONTAL SURFACE GRINDER



DANOBAT RT 800 HORIZONTAL SURFACE GRINDER



GALLMEYER & LIVINGSTON NO. 65 SURFACE GRINDER



TRAK TRL 2460 SX CNC LATHE



TOS SUS63 MANUAL LATHE



NARDINI 1N20120T 20" X 120" MANUAL LATHE



VIEW OF ROTARY TABLES

HORIZONTAL AND VERTICAL GRINDERS

- **1989 DANOBAT RT-1500B COMBINATION HORIZONTAL/VERTICAL SURFACE AND WAY GRINDER**, 28" x 200" Work Cap., (4) 28" x 50" Mag Chucks, Auxillary Vertical Head, Digital Readout, S/N 17,
- **1990 DANOBAT RT 2500 HORIZONTAL SURFACE GRINDER**, Fagor Digital Readout, 39.5" x 101" Table with Magnetic Chucks, Full Pendant Controls, Wheel Dresser, Coolant, S/N 012
- **1980 DANOBAT RT 800 HORIZONTAL SURFACE GRINDER**, 19.5" x 31.5" Chuck, Sony 2-Axis DRO, S/N 410
- **GALLMEYER & LIVINGSTON NO. 65 SURFACE GRINDER**, 12" x 48" Magnetic Chuck, S/N 6-187

CNC AND MANUAL LATHES

- **2013 TRAK TRL 2460 SX CNC LATHE**, 24" Swing x 60" CC, 12" 3-Jaw Chuck, 4" Hole Dia. Steady Rest, CSS & IPR Programing, Proto Trak SMX Controls, Tailstock,
- **2003 HARRISON 600 M14060GH MANUAL LATHE**, 17" x 72" Cap., Sony 2-Axis DRO, with Attachments
- **2003 HARRISON 460 M4603GH MANUAL LATHE**, 16" x 60" Cap., Sony 2-Axis DRO, with Attachments
- **1987 TOS SUS63 MANUAL LATHE**, 24" Swing Over Bed, 31.5" CC, 24" 4-Jaw Chuck, 13" Over Cross Slide, Taper Attachment, Sony 2-Axis DRO, Coolant, 2 Steady Rests, S/N 0454179
- **NARDINI MANUAL LATHE**, 32" Swing Over Bed, 200" CC, 24" 4-Jaw Chuck, Sony 2-Axis DRO, 3 Steady Rests, Threading, S/N E6KDV513
- **1991 TOS SU100 MANUAL LATHE**, 41" Swing Over Bed, 157" CC, 40" 4-Jaw Chuck, Threading, 32" Over Cross Slide, 4" Hole, Sony 2-Axis DRO, (2) Steady Rests, S/N 0443131
- **NARDINI 1N20120T 20" X 120" MANUAL LATHE**, 15" 4 Jaw Chuck, Taper Attachment, Newall 2-Axis DRO, Steady Rests, S/N 016015014

ROTARY TABLES

- **74" X 74" B-AXIS CNC ROTARY TABLE**, 30,000 LB Cap.
- **GIDDINGS & LEWIS 60" X 96" AIR LIFT ROTARY TABLE**

CNC VERTICAL MILLS

- **2013 TRAK DPM5 3-AXIS CNC VERTICAL MILL**, Proto Trak SMX Controls, 5 HP, 50 x 12 Table, 40 Taper, Power Draw Bar, 40" x 20" x 23" Travels
- **1998 BRIDGEPORT EZ PATH DX CNC VERTICAL MILL**, EZ Trak DX Conrol, 11" x 56" Table, 2 HP Variable Speed Head, Futaba DRO, S/N EZ2-299

VERTICAL AND HORIZONTAL MILLS

- **K&T MDL. H FIXED HEAD VERTICAL MILL NO. 3**, 13 1/2" x 64" Table, 1000 RPM, Newall DRO, S/N 474192
- **K&T MDL. 310 MILWAUKEE HORIZONTAL/VERTICAL MILL**, Series TF, 16" x 76" Table with Bridgeport Head, Futaba DRO, S/N 10-8968
- **K&T MDL. CK MILWAUKEE HORIZONTAL MILL**, 15 HP, 15.5" x 64" Table, S/N 18-7723
- **K&T HORIZONTAL MILL**, with 1 HP Bridgeport Head 3 Axis DRO, 11-1/2" x 45 1/2" T-Slotted Table

OPENSIDE PLANERS

- **ROCKFORD OPENSIDE PLANER**, Vertical & Side Heads, 22" x 72" T-Slotted Table
- **ROCKFORD OPENSIDE PLANER**, 59.5" x 145" Table, (2) Swiveling Rail & (1) Side Head, 144" Table Travel, 60" Vertical Rail Travel, S/N 4PL088

State-of-the-Art Precision Machining Facility & IP



250-TON LOURIE MDL. SFK HORIZONTAL WHEEL PRESS



150-TON DAKE MDL. 19-390 HYDRAULIC STRAIGHTENING PRESS



AMADA H550EII HORIZONTAL BAND SAW



TRAK DPM5 3-AXIS CNC VERTICAL MILL



BRIDGEPORT EZ PATH DX CNC VERTICAL MILL



K&T MDL. H FIXED HEAD VERTICAL MILL



PEERLESS HACKSAW, WITH CONVEYOR



K&T MDL. CK MILWAUKEE HORIZONTAL MILL



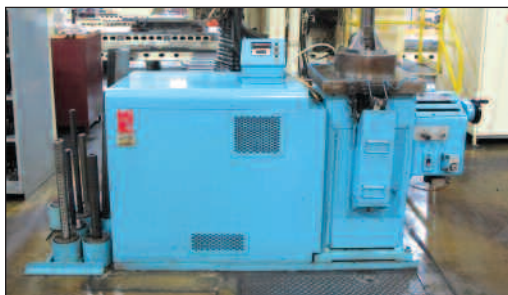
ROCKFORD OPENSIDE PLANNER



7' X 19" CARLTON RADIAL ARM DRILL



5' X 15" CARLTON RADIAL ARM DRILL



MITTS & MERRILL KS 6-HFRD KEYSEATER



VIEW OF WELDERS



VIEW OF ANGLE PLATES

WHEEL PRESS

- 250-TON LOURIE MDL. SFK HORIZONTAL WHEEL PRESS, 12' Stroke, S/N 1630A

STRAIGHTENING PRESS

- 150-TON DAKE MDL. 19-390 HYDRAULIC STRAIGHTENING PRESS, 42" x 144" Table, 48" Between Uprights, S/N 169537

VERTICAL AND HORIZONTAL BAND SAWS

- 2011 AMADA H550EII HORIZONTAL BAND SAW, 22" Cap., S/N 55900119 • PEERLESS HACKSAW, with Conveyor • DOALL VERTICAL BAND SAW

RADIAL ARM DRILLS

- 7' X 19" CARLTON RADIAL ARM DRILL, T-Slotted Base
- 5' X 14" FOSDICK RADIAL ARM DRILL, with T-Slotted Base & Adj Table, 5' Arm 14" Column
- 5' X 15" CARLTON RADIAL ARM DRILL, with T-Slotted Base, Box Table 42" x 48", 10 HP

KEYSEATER

- MITTS & MERRILL KS 6-HFRD KEYSEATER, 3.5" x 32" Stroke, S/N KM-7742

ROTARY TABLES, T-SLOT TABLES, ANGLE PLATES, FLOOR PLATES

- ROTAB 36" TILTING ROTARY TABLE • (4) ANGLE PLATES, T-Slotted 36 x 96" High • (4) ANGLE PLATES, 24" x 72" High • (2) LARGE ANGLE PLATES, T-Slotted 2 sections, Bottom 66" x 84" Wide, Square Top 50" x 84" Wide Together 122" H x 84" W • FLOOR PLATE, 118" x 118" T Slotted (4514)

BALANCERS

- 2013 SMART BALANCER & SOFTWARE
- 1991 SCHENCK H-48 TREBEL BALANCER, 2500 Lb Cap., S/N AHF-1325

WELDING POSITIONER

- ARONSON HD30A WELDING POSITIONER, 3400 Lb Cap., S/N 76417

WELDING LATHES, WELDING SYSTEMS AND WELDERS

- META-LAX WELDING LATHE, with Controls & Tables, 48" x 72" Table • STORM VULCAN 150-B-SP KOTA WELDING SYSTEM, S/N 364-75 • STORM VULCAN 130A JOURNALMASTER WELDING LATHE, S/N 62181 • BANCROFT WELDING LATHE • (6) MILLER WELDERS

DAY 1: ONSITE & WEBCAST AUCTION — Tuesday, February 28

VEHICLES

- 2005 CHEVY 2500 HD SILVERADO PICKUP, VIN# GCHC24U85E249529
- 2005 CHEVY 2500 HD SILVERADO PICKUP, VIN# 1GCHC24UX5E259966
- 2005 CHEVY 2500 HD SILVERADO PICKUP, VIN# 1GCHC24U55E249567
- 2005 CHEVROLET 3500 EXPRESS CARGO VAN, VIN# 1GCHG35UX51187356
- 2005 CHEVROLET 3500 EXPRESS CARGO VAN, VIN# 1GCHG35U951187249
- 2005 CHEVROLET 3500 EXPRESS CARGO VAN, VIN# 1GCHG34U651187029

MATERIAL HANDLING, FORKLIFTS, MAN LIFT, FLOOR SCRUBBER

- 15,000 LBS HYSTER S155FT DIESEL POWER CUSHION TIRE LIFT TRUCK, 2-Stage Mast, 134" Lift Height, 105" Mast Height, 48" Forks, Harris Cab Enclosure, Side Shift, Fork Positioning, 7,952 Hours
- (2012) 10,000 LBS HYSTER S100FTBCS LP GAS CUSHION TIRE LIFT TRUCK, 2-Stage Mast, 114" Lift Height, 86" Mast Height, Side Shift, Fork Positioning, 42" Forks, Monotrol Conventional Hydraulic Controls, 5,462 Hours
- HYSTER FORK LIFT, 12,000 Lbs MN@120 X L2
- YALE FORK LIFT, 12,000 Lbs, Solid Tires, 3-Stage Mast, LP
- YALE FORK LIFT, 5000 Lbs, S/N E187V051440
- CROWN ELECTRIC STAND UP FORK LIFT, with Side Shifter, 3500 Lb Cap., 1 MN, 35 RRTT, S/N W-8872C
- CROWN 20MT STAND BEHIND ELECTRIC LIFT, 2000 Lb Cap., S/N 39383
- 1991 SIMON PERSONAL ELECTRIC MAN LIFT, 32/31, 38' Height, 500 Lb Platform, Indoor/Outdoor
- LARGE PULL CART, 80,000 Lb Cap., 72" x 144"
- LARGE PULL CART, 50,000 Lb Cap., 72" x 144"
- TENNANT 5700XP FLOOR SCRUBBER



VIEW OF CHEVY 2500 HD SILVERADO TRUCKS & CHEVY 3500 EXPRESS CARGO VAN



VIEW OF FORKLIFTS & MAN LIFT



10,000 LBS HYSTER S100FTBCS LP GAS LIFT TRUCK

SHOT BLAST SYSTEM, DUST COLLECTORS

- RUEMELIN AG SHOT BLAST SYSTEM, Size 72" x 36", S/N 36138
- DONALDSON DFT4-32 TORIT DOWNFLO DUST COLLECTOR SYSTEM, Dual Barrel Discharge, 40 HP, Cartridge Type Filtration
- HARRIS INDUSTRIAL 220X ENVIRONMENTAL FREEZER, Temtek Chiller, S/N A81987-100 Degrees



DONALDSON TORIT DOWNFLO DUST COLLECTOR



HARRIS INDUSTRIAL 220X ENVIRONMENTAL FREEZER

AIR COMPRESSORS AND DRYERS

- (2) INGERSOL RAND SSR-UP6-30-125 HORIZONTAL TANK MOUNTED ROTARY AIR COMPRESSORS, 30 HP, 125 PSI, S/N PX-5598U65236, S/N PS5597U05235
- WORTHINGTON 10RS110B HORIZ. TANK ROTARY AIR COMPRESSOR, 25 HP, S/N COM882-051
- INGERSOL RAND REFRIGERATED AIR DRYER, TSIA



IR HORIZ. TANK MOUNTED ROTARY AIR COMPRESSORS



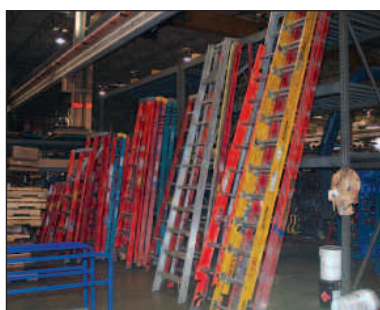
IR REFRIGERATED AIR DRYER

TOOL CRIB, STORE ROOMS, MISCELLANEOUS EQUIPMENT

- (145) LISTA CABINETS WITH GAUGES, REAMERS, TAPS, COUNTER BORES, END MILLS, DRILLS, FASTENERS, FLANGE TAPPERS, DRILL SHANKS, DRILL BITS, THREADERS, MILLING INSERTS, INSPECTION, TOOL GRINDERS, ETC. • (3) SMALL DOUBLE DISC GRINDER/ BUFFERS • NEDERMAN EXHAUST SYSTEM • ELECTRO ARC ADJ TAPPER, with Table • (15) SMALL HOPPERS • PIPE THREADER



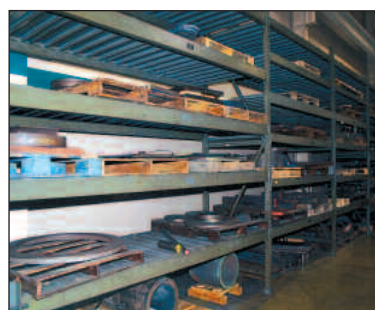
VIEW OF LISTA CABINETS



VIEW OF LADDERS



CANTALEVER RACKS & STEEL STOCK



PALLET RACKING AND STEEL/NON FERROUS STOCK

GROUND MAINTENANCE EQUIP.

- GRASS HOPPER RIDING MOWER,
- HAND MOWER
- (2) SNOW BLOWERS

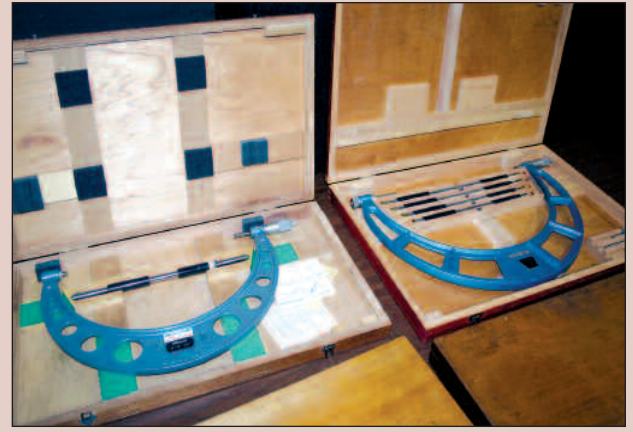
INTELLECTUAL PROPERTY: Busch Precision is a 107 year old ISO 9001 certified Precision Machine company with five revenue producing lines of business. All intellectual property is for sale and will include Company name, website, customer lists, trademarks and patents, two proprietary product lines. Precision Tool and Die Cast Product lines will be included in sale along with all patterns and molds.

DAY 2: ONLINE ONLY AUCTION — Wednesday, March 1

2016



FARO EDGE 7-AXIS, 9' INSPECTION ARM W/FARO LASER LINE PROBE, POLYWORKS INSP & 64BIT NOTEBOOK COMPUTER SYSTEM



MICROMETERS



BORE GAGES



DEPTH MICROMETER



IFLEX LX/LT SCOPE



INSPECTION EQUIPMENT



PRECISION STRAIGHT EDGES



GRANITE SURFACE PLATES



LARGE MICROMETERS



VIEW OF OFFICES



VIEW OF OFFICES



VIEW OF OFFICES



FURNITURE, PODIUM & ERASER BOARD



J.C. BUSCH MEMORABILIA



VIEW OF THE EVINRUDE MOTOR & MEMORABILIA

SURFACE PLATES, INSPECTION

- LARGE GRANITE SURFACE PLATE, 83" x 140" x 20.5" Thick
- GRANITE PLATE, 36" x 140" x 18" Thick with Rolling Stand
- 2015 TRIMOS VECTRA HEIGHT GAUGE, (16 K New), 40" Height
- GRANITE, 48 x 8 x 36
- GRANITE, 14-1/2 x 48 x 96
- LARGE QUANTITY OF MICROMETERS, GAUGES, CALIPERS, ETC.

COLLECTABLES AND MEMORABILIA

- 1924 EVINRUDE OUTBOARD MOTOR IN DISPLAY CASE
- J. C. BUSCH FRAMED PICTURES OF COMPANY HISTORY & ACHIEVEMENTS
- FRAMED NUMBERED ART BY LYNN CASPER AND OTHERS

INSPECTION

- NEW BUSCH PRECISION STRAIGHT EDGES IN SIZES FROM 2' TO 16', 2016 FARO EDGE 7-AXIS 9' INSPECTION ARM W/FARO LASER LINE PROBE, POLYWORKS INSP & 64BIT NOTEBOOK COMPUTER SYSTEM, IFLEX LX/LT SCOPE, SUNNEN GAGE SETTING FIXTURES, LARGE QUANTITY OF MICROMETERS FROM 1" TO 100", TRIMOS VECTRA TOUCH DIGITAL HEIGHT GAUGE, ASSORTED HEIGHT GAGES, BORE GAGES, CALIPERS, DEPTH MICROMETERS, PRECISION BLOCKS, BOXED MICROMETER SETS, AUTO COLLIMATOR, PRECISION END MEASURES, PRECISION SQUARES, ASSORTED GRANITE SURFACE PLATES AND TABLES & MUCH MORE

OFFICES

- LED PROJECTORS, POLYCOM SPEAKER PHONES, COMPUTERS, PRINTERS, COPIERS, MONITORS, REFRIGERATORS, DESKS, CHAIRS, LATERAL FILE CABINETS, REGULAR FILE CABINETS, ERASER BOARDS, CAFETERIA TABLES, AND CHAIRS, FOLDING CHAIRS, CUBICLES, SOFA AND CHAIRS, CONFERENCE TABLES AND CHAIRS AND MUCH MORE

State-of-the-Art Precision Machining Facility & IP



2015

G&L V1250 CNC VERTICAL TURNING CENTER

HYPERAMS
asset maximization services
1501 Michael Dr., Wood Dale, IL 60191

2-DAY PUBLIC AUCTION

DAY 1: Tuesday, February 28 @ 9:00am CST (ONSITE & WEBCAST AUCTION)

DAY 2: Wednesday, March 1 @ 11:00am CST (ONLINE ONLY AUCTION)

LOCATION: 8200 North Faulkner Road, Milwaukee, WI

State-of-the-Art Precision Machining Facility & IP



2-DAY PUBLIC AUCTION

DAY 1: Tuesday, February 28 @ 9:00am CST

(ONSITE & WEBCAST AUCTION – Primary Assets)

DAY 2: Wednesday, March 1 @ 11:00am CST

(ONLINE ONLY AUCTION – Office & Inspection Equip. and Memorabilia)

LOCATION: 8200 North Faulkner Road, Milwaukee, WI 53224

PREVIEW: Monday, February 27, from 9:00am to 4:00pm CST

Additional Information: Register & Bid at hyperams.com
For Questions, Contact Burdette Wilber at (314) 616-8422.
See website for terms of sale and accepted payment.
Sales tax and buyers premium of 18% online/15% onsite
will be added to all invoices.



G&L VTC3500 CNC VERT. TURRET LATHE



TRAK TRL 2460 SX CNC LATHE



VIEW OF LISTA CABINETS



DANOBAT HORIZ. SURFACE GRINDER



CHEVROLET 3500 EXPRESS CARGO VAN



J.C. BUSCH MEMORABILIA

HYPERAMS
asset maximization services

For Info: Burdette Wilber at (314) 616-8422
or Visit Website: www.hyperams.com

Jeffrey L. Luggen WI Lic. #1148-052 • Joseph M. Luggen WI Lic. #2923-52



CINCINNATI
INDUSTRIAL
AUCTIONEERS
auctioneers | appraisers | since 1961

Sale in Partnership with:

BID ONLINE AT:
BidSpotter.com