



2003 Newmar Dutch Star

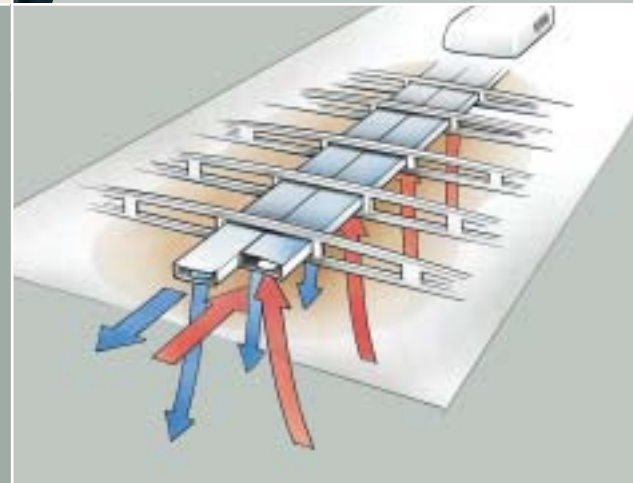
DIESEL PUSHER



2003 Newmar Dutch Star
DIESEL PUSHER



DUTCH STAR DIESEL PUSHER



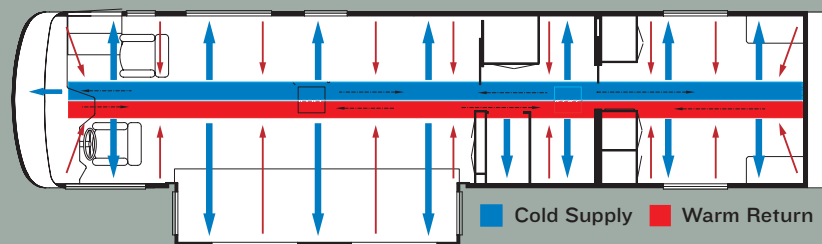
Dutch Star Diesel Pusher **BALANCE**

Many individuals seek it, and those who do find balance in their lives consider it a real virtue. Likewise, every Newmar is created to provide an optimal balance of practicality, comfort, innovation and style. This is especially true of the Dutch Star Diesel Pusher. From the new adjustable throttle and brake pedals to the numerous enhancements, including two new graphics colors for the exterior, the Dutch Star shines. It's uncompromising construction and intelligent design throughout — a balance that makes this coach an industry benchmark for all-around quality and real-world performance.



NEWMAR'S TRUE CENTRAL AIR SYSTEM —

Newmar's True Central Air utilizes not only full ducting for incoming cool air but also a separate fully ducted system to quickly and effectively remove warm air from every living area. True Central Air is standard on every Newmar.





DSDP—4050 / Silver Green

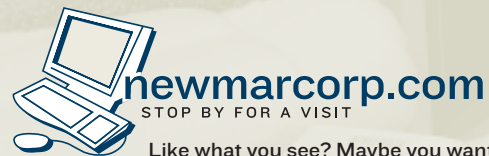


DSDP—3802 / Iced Boysenberry



Dutch Star Diesel Pusher **PEACE**

Contained within the interior of every Dutch Star Diesel Pusher is a personal experience with peace and comfort. Owning one inspires a confidence, knowing you can take this experience anywhere you care to travel. The Dutch Star Diesel Pusher offers five new choices of interior décor designs, a new carpet style, redesigned bedroom cabinetry and numerous other enhancements like the new-style décor glass and restyled privacy drapes. Together, the elements of cabinetry, upholstery and décor treatments work in harmony with Newmar innovation to create an interior that's livable *and* lovable. The Dutch Star Diesel Pusher from Newmar — peace in your world.



Like what you see? Maybe you want to learn more about who we are — to discover more about what we mean by “Newmar Quality: A Way Of Life.” At newmarcorp.com, you'll find the latest updates on individual model specifications, floorplans, special packages and more. You'll also find a wealth of resources to become more familiar with our heritage, our history and our innovations.



DSDP—3802 / Iced Boysenberry





Dutch Star Diesel Pusher

PRIDE AND TRADITION

Maybe it's in the way Newmar employees take pride in their work and assume personal responsibility for each task they perform. Maybe it's because these talented individuals build each Newmar, from the American Star Travel Trailer up to the London Aire Coach, on the same assembly line. Maybe it's because Newmar's leadership believes real quality is not found on a chart but in a way of life.

There are several things that make a Newmar special. Just like individuals, the qualities we value most are the inner ones. We build our products to reflect this way of thinking. We believe outer beauty is only worthwhile if it reflects inner quality. We back this quality with a three-year / 36,000-mile, bumper-to-bumper limited warranty, the Newmar Freedom Warranty. It's a commitment not only to our products, but also to our Newmar owners. And as with many other industry-changing innovations, Newmar was the first to offer this level of coverage, leaving the rest to follow suit. It's all about freedom — comprehensive coverage and the peace of mind that goes along with it. This is the essence of Newmar.

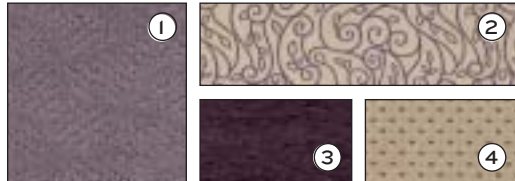




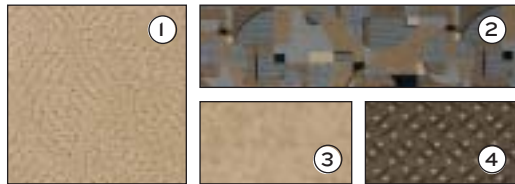
Décor

Personal Details

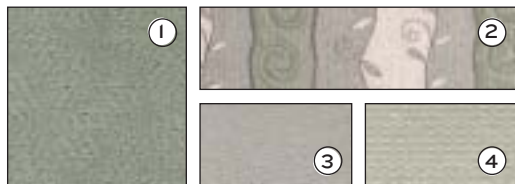
Dutch Star



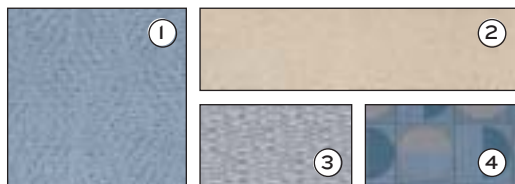
DP3-474/Iced Boysenberry



DP3-475/Black Pearl



DP3-476/Silver Green



DP3-477/Shadow Blue



DP3-478/Butter Pecan



Sable Tan

Graystone



Black Pearl

Silver Green

Iced Boysenberry



Shadow Blue

Butter Pecan

EXTERIOR FINISH

We pay close attention to details like surface preparation and facility cleanliness for maximum results, no matter if the job calls for a full custom paint scheme or one from our assortment of offerings. Our finishing technicians are skilled and experienced. The result is your Newmar receives an uncommonly uniform finish that is as durable as it is beautiful.

DÉCOR ① carpet ② sofa ③ accent 1 ④ accent 2

With the range of fabrics, colors and textures available in Newmar's designs, you have a broad palette of self-expression. These elements work in harmony to create a unique experience that captivates and inspires. Newmar interiors are designed to delight your senses of sight and touch, and allow you to choose an interior as individual as you are.



BRINGING UP-TO-THE-MINUTE INFORMATION TO YOU AT THE SPEED OF LIFE. YOU'LL FIND:

- Floorplans/Specifications
- New Interior/Exterior Colors
- Standard/Optional Equipment
- Newmar Photo Gallery
- Kountry Klub Information
- Factory Tour Experience



KONNECT

With so many impassioned Newmar owners out there, sharing the Newmar experience is only natural. We created the Kountry Klub to:

- Create an environment for friendship, fun, adventure and recreation
- Provide a forum and activities for all Newmar product owners to socialize as a group
- Streamline relations and communication between Newmar and Newmar owners

There are many benefits for our members to enjoy including the Klub magazine, rallies, caravans and special RV show events. Call 877-639-5582, or go to the Klub section of newmarcorp.com for details on our events calendar, Klub merchandise, Klub news and more!

EXPERIENCE THE NEWMAR FACTORY TOUR

If experience is a good teacher, let the Newmar Factory Tour experience teach you much. Feel the smooth contours of hand-finished countertops before they are set. Smell freshly sanded woods as cabinets are assembled. Take in the energy of motivated employees as they build each individual Newmar, on the same assembly line, with equal care and attention to detail. Consider yourself invited. Call 574-773-7791 for reservations and more information.



Newmar Quality: A Way of Life

NEWMAR CORPORATION
355 N DELAWARE ST
PO BOX 30
NAPPANEE IN 46550-0030
574-773-7791 Fax 574-773-2895
www.newmarcorp.com

Newmar 2003

www.newmarcorp.com

Official Newmar Dealer:

Some features shown in our literature are optional. Colors and finishes are photographic representations and may appear differently when viewing actual materials. Prices, specifications and floorplans are subject to change at Newmar's discretion without prior written notice or obligation. Please see your dealer for actual samples and specifications. ©2002 Newmar Corporation. Printed in the U.S.A. (6/02)

*2003 Dutch Star
Diesel Pusher*

Newmar Corporation
2003 Dutch Star Diesel Pusher
Specifications & Floorplans



2003 DUTCH STAR DIESEL PUSHER

STANDARD FEATURES

MOTORIZED CHASSIS FEATURES

- Cruise Control
- Stainless Steel Wheel Simulators
- Tilt and Telescope Steering Wheel
- Independent Front Suspension
- Exhaust Brake
- Recessed Fuel Fills with Cross Over to Fill from Either Side
- Full Air Ride
- Full Air Brakes
- Adjustable Brake and Accelerator Pedals
- Freightliner Chassis

AIR CONDITIONING & HEATING

- Two - 13,500 BTU Penguin Central Air Conditioners
- LP Leak Detector
- Dash Heater and Air Conditioner High Output

APPLIANCES & ACCESSORIES

- 10 Gallon Gas/Electric Water Heater with Direct Spark Ignition
- Spacesaver Microwave
- Flat Screen Color TV in Dash Overhead
- Flat Screen Color TV in Bedroom
- 3-Burner Range with Glass Oven Door and Piezzo Ignition
- AM/FM Dash Radio with Compact Disc Player
- Dometic® 3862 Refrigerator (8 Cubic Foot)
- Rear View Monitor System
- TV Antenna with Power Booster, One Exterior Jack, and Two Interior Jacks
- VCR

CABINETS & FURNITURE

- Flexsteel® Leather/Vinyl Front Seats with Six-Way Power, Lumbar Support, and Passenger Footrest
- Flexsteel® Swivel and Recline Front Seats with Three Point Seat Belt
- Flexsteel® Rocker Recliner
- Flexsteel® Easy Bed Sofa (74" and 84")
- Flexsteel® Hide-A-Bed Sofa (68")
- Drawers with Metal Guides
- Hidden Leaf Dinette Table with Two Fixed Chairs and Two Folding Chairs
- Oak Hardwood Raised Panel Cabinet Doors

- Corian® Countertop in Kitchen with Color Coordinated Edge and Acrylic Sink
- Corian® Countertop in Bathroom with Porcelain Lavatory

ELECTRICAL FEATURES

- Two-45 Amp Converters
- Four-Six Volt Batteries
- Battery Disconnect
- 7,500 Watt Generac® Diesel Generator on Slides with Automatic Changeover
- 5 Watt Solar Panel to Charge Chassis Battery
- 50 Amp Electrical Service with Flexible Cord
- Emergency Engine Start Switch
- Exterior Security Lights (One Installed on Each Side)
- Lights in Exterior Storage Compartments

EXTERIOR FEATURES

- BriteTek® Roof with 7mm Decking
- Convex Exterior Mirrors with Remote Control and Defrost
- Gel-Coated Fiberglass Exterior Sides
- Class 5, 10,000# Hitch
- Roof Rack and Ladder
- Galvanized Wheel Well Liners

INTERIOR FEATURES

- Day/Night Pleated Window Shades and Lambrequins
- Padded Vinyl Ceiling
- Quilted Bedspread with Reverse Sham and Accent Pillows
- Simulated Plank Floor in Kitchen and Bath Areas

PLUMBING & BATH FEATURES

- Exterior Shower (Located on Off Door Side)
- Monitor Panel
- Sewage Holding Tank Rinse
- SeaLand® 500+ China Stool
- Fiberglass Tub/Shower with Glass Shower Door
- Water Heater Bypass System

CONSTRUCTION FEATURES

- Aluminum Frame Sidewalls & Roof Construction, 16" On Center
- Roof R-Value Rating: 16

- Sidewall R-Value Rating: 11
- Floor R-Value Rating: 12

WINDOWS, AWNINGS, & VENTS

- Double Pane, Tinted Safety Glass Windows, including Cockpit Windows
- Automatic Double Entrance Door Step
- Power Vent in Bathroom with Wall Switch
- Fan-Tastic® Vent with Rain Sensor in Kitchen Area
- Skylight in Bathroom

OPTIONAL FEATURES

MOTORIZED CHASSIS FEATURES

- Spartan Mountain Master Chassis
- Polished Aluminum Wheels

APPLIANCES & ACCESSORIES

- 30" Convection Microwave with 3-Burner Cooktop (10 lbs.)
- Norcold® Four Door Refrigerator (45 lbs.)
- Dometic® 1062 Refrigerator (10 Cubic Foot, 37 lbs.)
- Dometic® 1292 Side-By-Side Refrigerator (12 Cubic Foot, 132 lbs.)

CABINETS & FURNITURE

- Arnold Cherry Cabinets
- Cherry Hardwood Cabinets (25 lbs.)
- Maple Cream Cabinets
- Oak Hardwood Cabinets (25 lbs.)
- Pecan-Maple Hardwood Cabinets (25 lbs.)
- Summer Maple Hardwood Cabinets (25 lbs.)

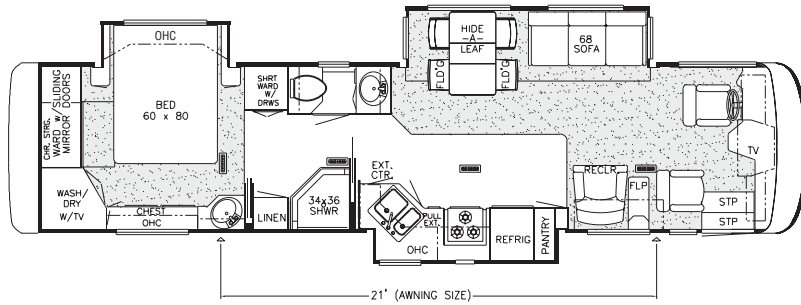
ELECTRICAL FEATURES

- 400 Watt Inverter for Dash TV (10 lbs.)
- Roof Mounted Spotlight (3 lbs.)
- Trace 2000 Watt Inverter (50 lbs.)

INTERIOR FEATURES

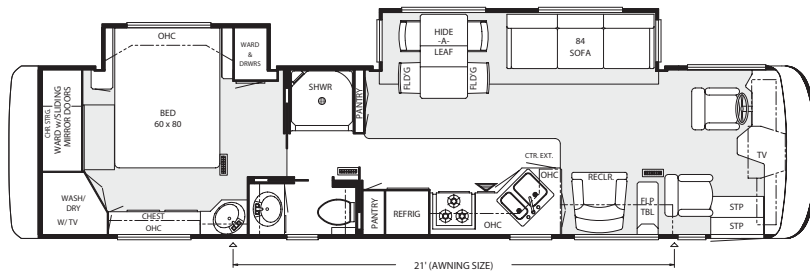
- Ceramic Floor Tile in Kitchen and Bathroom (110 lbs.)

NEWMAR SPECIFICATIONS: 2003 DUTCH STAR DIESEL PUSHER



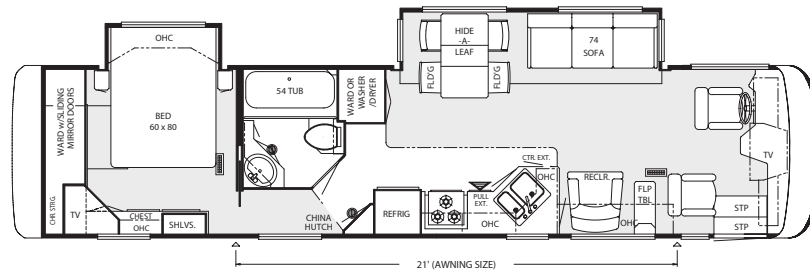
2003 Dutch Star Diesel Pusher 3802

| Model | DSDP 3802 |
|---------------------|------------------|
| APP. OVERALL LENGTH | 39' 3" |
| WIDTH | 100 |
| APP. OVERALL HEIGHT | 11' 11" |
| INTERIOR WIDTH | 94" |
| INTERIOR HEIGHT | 78" |
| GREY | 65 |
| SEWAGE | 45 |
| WATER | 105 |
| LP | 32 |
| FURNACE | 42,000 |
| WATER HEATER | 10 |



2003 Dutch Star Diesel Pusher 3803

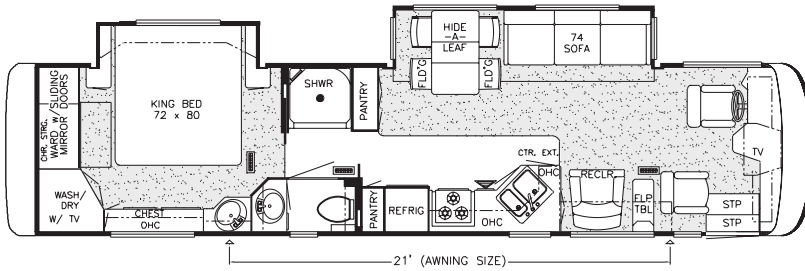
| Model | DSDP 3803 |
|---------------------|------------------|
| APP. OVERALL LENGTH | 39' 3" |
| WIDTH | 100 |
| APP. OVERALL HEIGHT | 11' 11" |
| INTERIOR WIDTH | 94" |
| INTERIOR HEIGHT | 78" |
| GREY | 65 |
| SEWAGE | 45 |
| WATER | 105 |
| LP | 32 |
| FURNACE | 42,000 |
| WATER HEATER | 10 |



2003 Dutch Star Diesel Pusher 3804

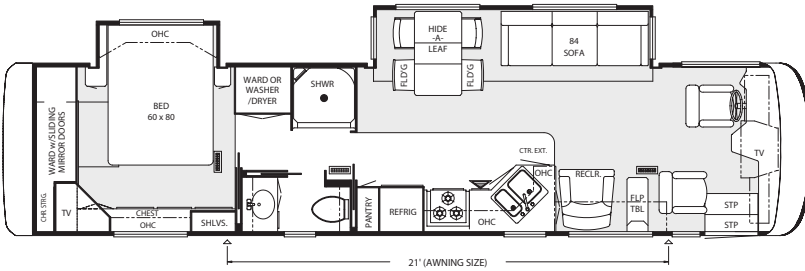
| Model | DSDP 3804 |
|---------------------|------------------|
| APP. OVERALL LENGTH | 39' 3" |
| WIDTH | 100 |
| APP. OVERALL HEIGHT | 11' 11" |
| INTERIOR WIDTH | 94" |
| INTERIOR HEIGHT | 78" |
| GREY | 65 |
| SEWAGE | 45 |
| WATER | 105 |
| LP | 32 |
| FURNACE | 42,000 |
| WATER HEATER | 10 |

NEWMAR SPECIFICATIONS: 2003 DUTCH STAR DIESEL PUSHER



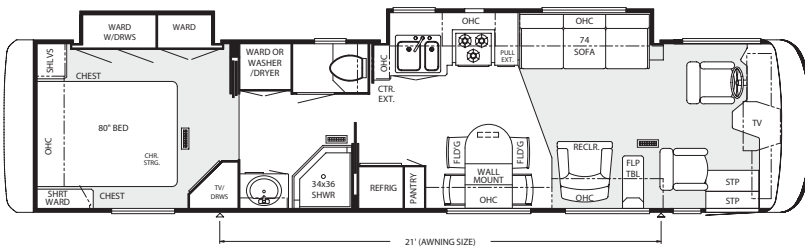
2003 Dutch Star Diesel Pusher 3805

| Model | DSDP 3805 |
|---------------------|-----------|
| APP. OVERALL LENGTH | 39' 3" |
| WIDTH | 100 |
| APP. OVERALL HEIGHT | 11' 11" |
| INTERIOR WIDTH | 94" |
| INTERIOR HEIGHT | 78" |
| GREY | 65 |
| SEWAGE | 45 |
| WATER | 105 |
| LP | 32 |
| FURNACE | 42,000 |
| WATER HEATER | 10 |



2003 Dutch Star Diesel Pusher 3853

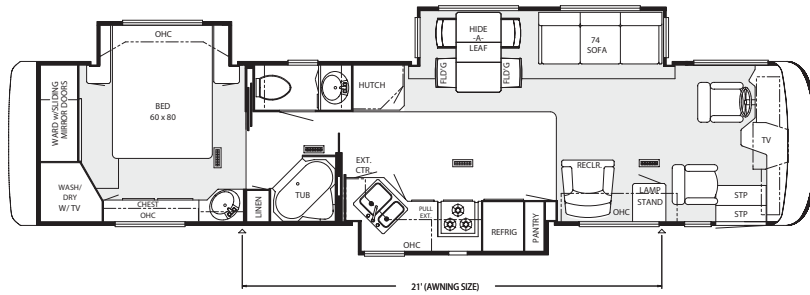
| Model | DSDP 3853 |
|---------------------|-----------|
| APP. OVERALL LENGTH | 39' 3" |
| WIDTH | 100 |
| APP. OVERALL HEIGHT | 11' 11" |
| INTERIOR WIDTH | 94" |
| INTERIOR HEIGHT | 78" |
| GREY | 65 |
| SEWAGE | 45 |
| WATER | 105 |
| LP | 32 |
| FURNACE | 42,000 |
| WATER HEATER | 10 |



2003 Dutch Star Diesel Pusher 3893

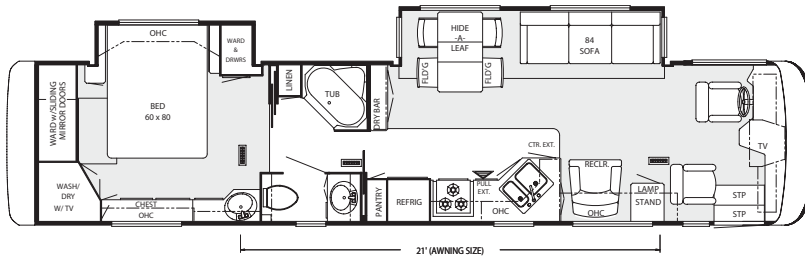
| Model | DSDP 3893 |
|---------------------|-----------|
| APP. OVERALL LENGTH | 39' 3" |
| WIDTH | 100 |
| APP. OVERALL HEIGHT | 11' 11" |
| INTERIOR WIDTH | 94" |
| INTERIOR HEIGHT | 78" |
| GREY | 65 |
| SEWAGE | 45 |
| WATER | 105 |
| LP | 32 |
| FURNACE | 42,000 |
| WATER HEATER | 10 |

NEWMAR SPECIFICATIONS: 2003 DUTCH STAR DIESEL PUSHER



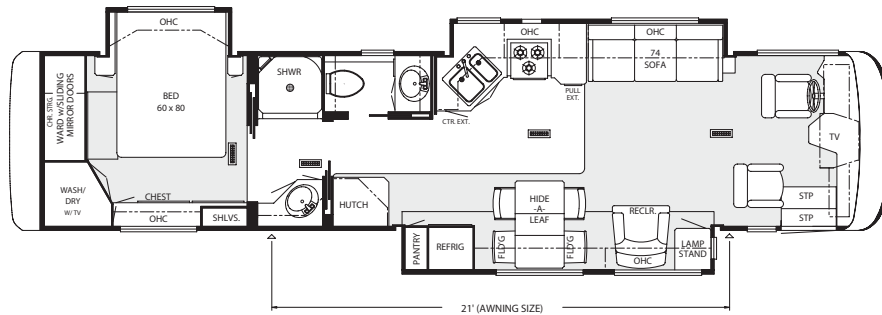
2003 Dutch Star Diesel Pusher 4004

| Model | DSDP 4004 |
|---------------------|-----------|
| APP. OVERALL LENGTH | 41' 3" |
| WIDTH | 100 |
| APP. OVERALL HEIGHT | 11' 11" |
| INTERIOR WIDTH | 94" |
| INTERIOR HEIGHT | 78" |
| GREY | 65 |
| SEWAGE | 45 |
| WATER | 105 |
| LP | 32 |
| FURNACE | 42,000 |
| WATER HEATER | 10 |



2003 Dutch Star Diesel Pusher 4005

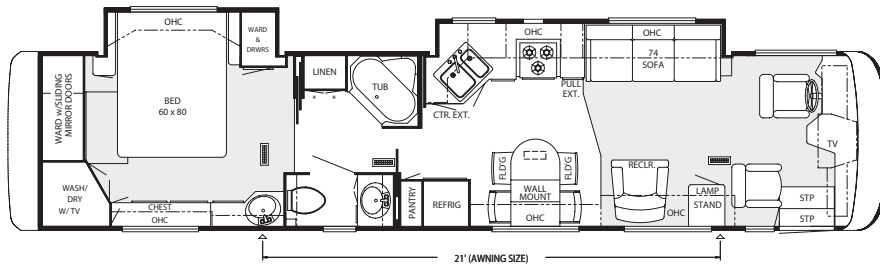
| Model | DSDP 4005 |
|---------------------|-----------|
| APP. OVERALL LENGTH | 41' 3" |
| WIDTH | 100 |
| APP. OVERALL HEIGHT | 11' 11" |
| INTERIOR WIDTH | 94" |
| INTERIOR HEIGHT | 78" |
| GREY | 65 |
| SEWAGE | 45 |
| WATER | 105 |
| LP | 32 |
| FURNACE | 42,000 |
| WATER HEATER | 10 |



2003 Dutch Star Diesel Pusher 4006

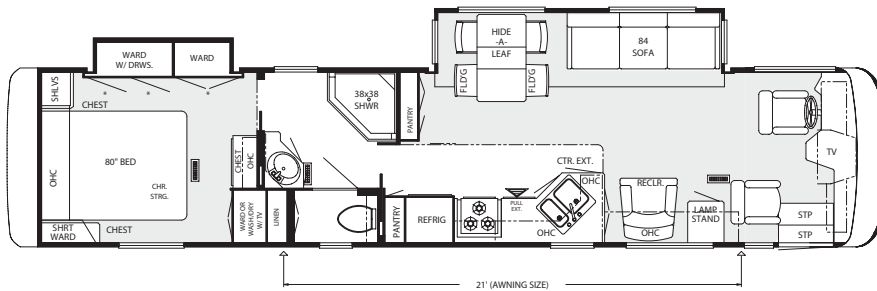
| Model | DSDP 4006 |
|---------------------|-----------|
| APP. OVERALL LENGTH | 41' 3" |
| WIDTH | 100 |
| APP. OVERALL HEIGHT | 11' 11" |
| INTERIOR WIDTH | 94" |
| INTERIOR HEIGHT | 78" |
| GREY | 65 |
| SEWAGE | 45 |
| WATER | 105 |
| LP | 32 |
| FURNACE | 42,000 |
| WATER HEATER | 10 |

NEWMAR SPECIFICATIONS: 2003 DUTCH STAR DIESEL PUSHER



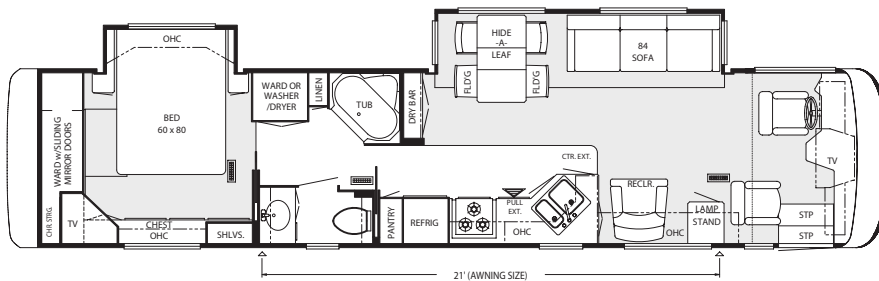
2003 Dutch Star Diesel Pusher 4007

| Model | DSDP 4007 |
|---------------------|-----------|
| APP. OVERALL LENGTH | 41' 3" |
| WIDTH | 100 |
| APP. OVERALL HEIGHT | 11' 11" |
| INTERIOR WIDTH | 94" |
| INTERIOR HEIGHT | 78" |
| GREY | 65 |
| SEWAGE | 45 |
| WATER | 105 |
| LP | 32 |
| FURNACE | 42,000 |
| WATER HEATER | 10 |



2003 Dutch Star Diesel Pusher 4050

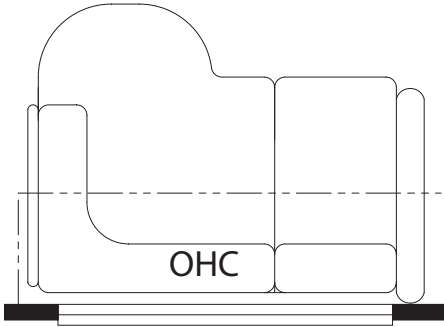
| Model | DSDP 4050 |
|---------------------|-----------|
| APP. OVERALL LENGTH | 41' 3" |
| WIDTH | 100 |
| APP. OVERALL HEIGHT | 11' 11" |
| INTERIOR WIDTH | 94" |
| INTERIOR HEIGHT | 78" |
| GREY | 65 |
| SEWAGE | 45 |
| WATER | 105 |
| LP | 32 |
| FURNACE | 42,000 |
| WATER HEATER | 10 |



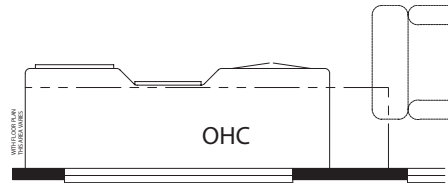
2003 Dutch Star Diesel Pusher 4097

| Model | DSDP 4097 |
|---------------------|-----------|
| APP. OVERALL LENGTH | 41' 3" |
| WIDTH | 100 |
| APP. OVERALL HEIGHT | 11' 11" |
| INTERIOR WIDTH | 94" |
| INTERIOR HEIGHT | 78" |
| GREY | 65 |
| SEWAGE | 45 |
| WATER | 105 |
| LP | 32 |
| FURNACE | 42,000 |
| WATER HEATER | 10 |

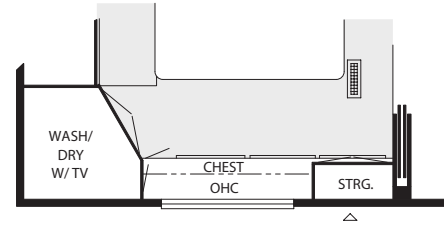
FLOORPLAN OPTIONS: 2003 DUTCH STAR DIESEL PUSHER



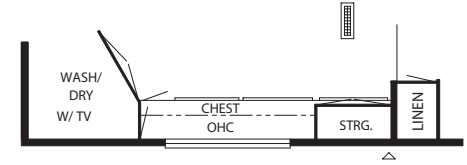
Option K140 58" L-Sofa
DSDP: 3803, 3804, 3805, 3853, 3893



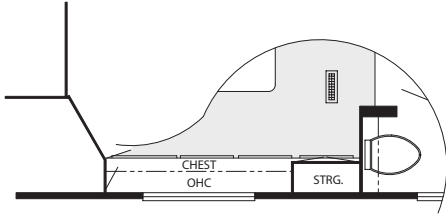
Option K235 61" Desk Plan
DSDP: 4004, 4005, 4007, 4050, 4097



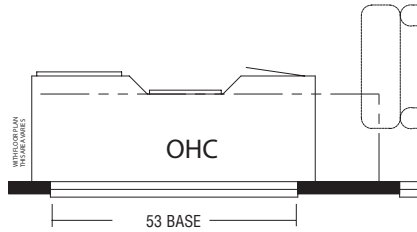
Option K280 Dresser Ctr. With Storage Tower
DSDP: 3802, 3803



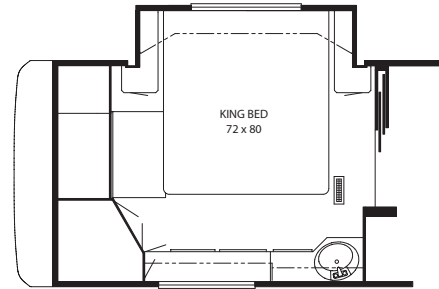
Option K280 Dresser Ctr. With Storage Tower
DSDP: 4004



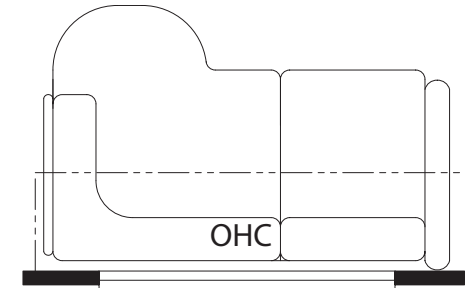
Option K280 Dresser Ctr. With Storage Tower
DSDP: 4005, 4007



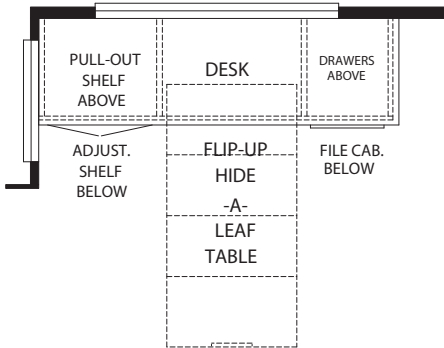
Option K326 53" Desk Plan
DSDP: 3803, 3804, 3805, 3853, 3893



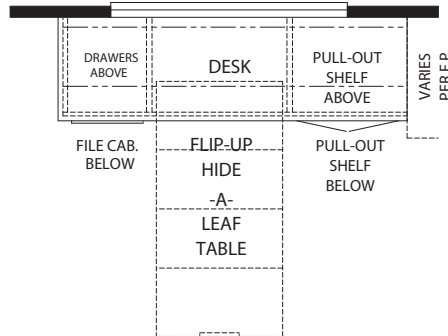
Option K630 King Bed
DSDP: 4005, 4007



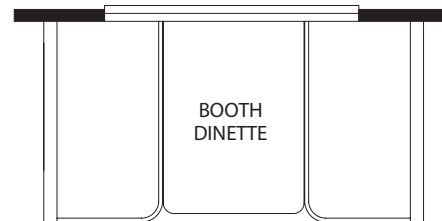
Option K910 66" L-Sofa
DSDP: 4004, 4005, 4007, 4050, 4097



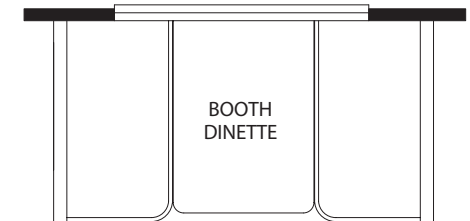
Option K124 Dinette Computer Station
DSDP: 3802, 3803, 3804, 3805, 3853, 4004, 4005, 4050, 4097



Option K124 A Dinette Computer Station
DSDP: 3893, 4006, 4007



Option K420 Booth Dinette
DSDP: 3803, 3804, 3805, 3853, 4004, 4005, 4050, 4097



Option K421 Booth Dinette
DSDP: 3802, 3893, 4007

CHASSIS SPECIFICATIONS: 2003 DUTCH STAR DIESEL PUSHER

FREIGHTLINER CHASSIS INFORMATION

| NAME | | | ENGINE HP | AXLE RATIO | FUEL CAP. | WHEEL BASE | *FRONT GAWR | *REAR GAWR | *GVWR | *GCWR | APP. UVW | APP. NCC |
|------|----|------|-----------|------------|-----------|------------|-------------|------------|--------|--------|----------|----------|
| DS | DP | 3802 | 330 | 4.63 | 100 | 252 | 12,000 | 19,000 | 31,000 | 41,000 | 25,786 | 5,214 |
| DS | DP | 3803 | 330 | 4.63 | 100 | 252 | 12,000 | 19,000 | 31,000 | 41,000 | 24,233 | 6,767 |
| DS | DP | 3804 | 330 | 4.63 | 100 | 252 | 12,000 | 19,000 | 31,000 | 41,000 | 24,128 | 6,872 |
| DS | DP | 3805 | 330 | 4.63 | 100 | 252 | 12,000 | 19,000 | 31,000 | 41,000 | 24,372 | 6,628 |
| DS | DP | 3853 | 330 | 4.63 | 100 | 252 | 12,000 | 19,000 | 31,000 | 41,000 | 24,487 | 6,513 |
| DS | DP | 3893 | 330 | 4.63 | 100 | 252 | 12,000 | 19,000 | 31,000 | 41,000 | 24,201 | 6,799 |
| DS | DP | 4004 | 330 | 4.63 | 150 | 276 | 12,000 | 19,000 | 31,000 | 41,000 | 26,036 | 4,964 |
| DS | DP | 4005 | 330 | 4.63 | 150 | 276 | 12,000 | 19,000 | 31,000 | 41,000 | 25,236 | 5,764 |
| DS | DP | 4006 | 330 | 4.63 | 150 | 276 | 12,000 | 19,000 | 31,000 | 41,000 | 25,887 | 5,113 |
| DS | DP | 4007 | 330 | 4.63 | 150 | 276 | 12,000 | 19,000 | 31,000 | 41,000 | 25,203 | 5,797 |
| DS | DP | 4050 | 330 | 4.63 | 150 | 276 | 12,000 | 19,000 | 31,000 | 41,000 | 25,148 | 5,852 |
| DS | DP | 4097 | 330 | 4.63 | 150 | 276 | 12,000 | 19,000 | 31,000 | 41,000 | 25,225 | 5,775 |

SPARTAN CHASSIS INFORMATION

| NAME | | | ENGINE HP | AXLE RATIO | FUEL CAP. | WHEEL BASE | *FRONT GAWR | *REAR GAWR | *GVWR | *GCWR | APP. UVW | APP. NCC |
|------|----|------|-----------|------------|-----------|------------|-------------|------------|--------|--------|----------|----------|
| DS | DP | 3802 | 350 | 4.63 | 100 | 252 | 12,000 | 19,000 | 31,000 | 41,000 | 25,986 | 5,014 |
| DS | DP | 3803 | 350 | 4.63 | 100 | 252 | 12,000 | 19,000 | 31,000 | 41,000 | 24,433 | 6,567 |
| DS | DP | 3804 | 350 | 4.63 | 100 | 252 | 12,000 | 19,000 | 31,000 | 41,000 | 24,328 | 6,672 |
| DS | DP | 3805 | 350 | 4.63 | 100 | 252 | 12,000 | 19,000 | 31,000 | 41,000 | 24,572 | 6,428 |
| DS | DP | 3853 | 350 | 4.63 | 100 | 252 | 12,000 | 19,000 | 31,000 | 41,000 | 24,687 | 6,313 |
| DS | DP | 3893 | 350 | 4.63 | 100 | 252 | 12,000 | 19,000 | 31,000 | 41,000 | 24,401 | 6,599 |
| DS | DP | 4004 | 350 | 4.63 | 150 | 276 | 12,000 | 19,000 | 31,000 | 41,000 | 26,236 | 4,764 |
| DS | DP | 4005 | 350 | 4.63 | 150 | 276 | 12,000 | 19,000 | 31,000 | 41,000 | 25,436 | 5,564 |
| DS | DP | 4006 | 350 | 4.63 | 150 | 276 | 12,000 | 19,000 | 31,000 | 41,000 | 26,087 | 4,913 |
| DS | DP | 4007 | 350 | 4.63 | 150 | 276 | 12,000 | 19,000 | 31,000 | 41,000 | 25,403 | 5,597 |
| DS | DP | 4050 | 350 | 4.63 | 150 | 276 | 12,000 | 19,000 | 31,000 | 41,000 | 25,348 | 5,552 |
| DS | DP | 4097 | 350 | 4.63 | 150 | 276 | 12,000 | 19,000 | 31,000 | 41,000 | 25,425 | 5,575 |

Lengths, Heights, Widths, and Dry Weights are approximate. Weight will vary based on optional equipment added to the above base weight.

GAWR: Gross Axle Weight Rating is the maximum permissible weight for an axle.

GVWR: Gross Vehicle Weight Rating is the maximum permissible weight of a fully loaded motorhome.

GCWR: Gross Combination Weight Rating is the value specified by the manufacturer of the vehicle as the maximum allowable loaded weight of this motorhome and any towed trailer or towed vehicle.

UVW: Unloaded Vehicle Weight is the weight of this motorhome as built at the factory with full fuel, engine oil, and coolants. The UVW does not include cargo, fresh water, LP gas, or dealer installed accessories.

NCC: Net Carrying Capacity is the maximum weight of all occupants, including the driver, personal belongings, food, fresh water, waste water, LP gas, tools, tongue weight of towed vehicle, dealer installed accessories, etc., that can be carried by the motorhome.

* Specifications supplied by chassis manufacturer.

3-36

Newmar Freedom Warranty™

The Newmar Freedom Warranty simply and clearly details the most impressive coverage in the industry. Three years or 36,000 miles, whichever comes first. Bumper to bumper. It's a symbol of our uncompromising pursuit of quality.

Newmar takes great pride in ensuring our owners have made the right choice. It's yet another way of reinforcing Newmar's commitment to the customer, and a challenge to the rest of the industry to raise its standards for the benefit of all RV owners.

Newmar has made this kind of protection possible, not only by building quality products, but also by demanding the same level of quality from our component manufacturers. When Newmar required them to match this 36-month pledge, everyone stepped up as expected. Now, Newmar is pleased to include these companies in our warranty - making the Newmar warranty truly complete.

The Newmar Freedom Warranty covers all components, except tires, battery and chassis (which is warranted for at least 36 months by its manufacturer).



Newmar Quality: A Way of Life.

355 N DELAWARE ST

PO BOX 30

NAPPANEE IN 46550-0030

574.773.7791 • FAX: 574.773.2895

www.newmarcorp.com

We invite you to visit our state-of-the-art production facility in Nappanee, Indiana. Plant tours are offered at 10 a.m. and 1 p.m. Monday through Friday.

Don't forget to check out the Newmar Kountry Klub. All you need for eligibility is to be a proud owner of any of the fine Newmar recreational vehicles.

Some features shown in our literature are optional. Colors and finishes are photographic representations and may appear differently when viewing actual materials. Prices, specifications, and floorplans are subject to change at Newmar's discretion without prior written notice or obligation. Please see your dealer for actual samples and specifications.

©2002 Newmar Corporation. Printed in the U.S.A. (9/19/02)

*2003 Dutch Star
Diesel Pusher*