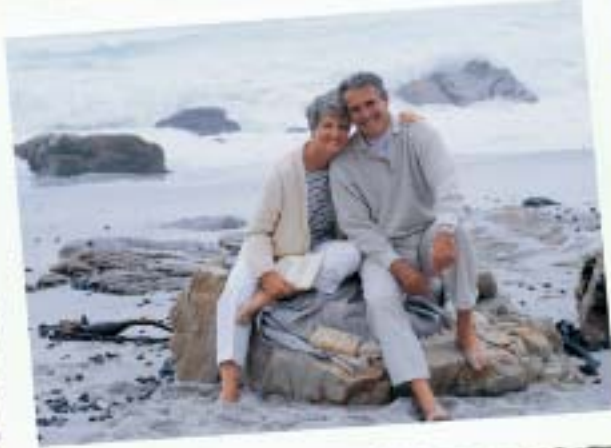


2004 DUTCH STAR
DIESEL PUSHER BY NEWMAR



2004 DUTCH STAR

DIESEL PUSHER BY NEWMAR

DESTINATION:

Florida Coast



NEWMARCORP.COM

JUNE 17 ~

Today, I walked along the coast...and into a bit of heaven.



How far can your dreams take you?

As far as your heart desires, when you travel in a Dutch Star Diesel Pusher motorhome. Newmar infuses it with all the power, performance and personality a wayfaring adventurer could want. And then some. You'll see it in the new optional Spartan, 370 ISL engine...the enticing exterior graphics with the option of Newmar's gorgeous Full-Paint Masterpiece Finish™...the expanded interior space...the wealth of amenities, inside and out...and the uncompromising construction. Simply put, the surest way to make dreams come true is to wish upon a Dutch Star — and take it where you will.



A



4011/Onyx



B

3809/Deco Blue

- A. Generous cabinets and Corian® countertop space, plus an open, airy layout, make the Dutch Star kitchen a model of convenience.
- B. A handy flip-up/flip-down countertop extension and a pullout cutting board increase the Dutch Star kitchen's utility.
- C. Since the sink cover sits flush with the countertop, your food-prep surface area is significantly expanded.
- D. The stove burners are "sealed" so they don't trap food, which makes cleanups quick and easy.



C

3809/Deco Blue



D

3809/Deco Blue

JULY 18 ~

Our grandkids, especially, loved going to the beach. Hal couldn't get them out of the water — even when he promised them ice cream.



A



4011/Onyx



B

- A. Plush seating and an open floor plan add comfort while crisp window treatments lend sophistication to the Dutch Star living room.
- B. New cockpit gauges and controls are large, easily accessible and easy to use, putting you in firm command of the road.
- C. The attractive, supremely comfortable L-style couch has a pullout drawer, which gives you access to additional storage underneath.
- D. With this color rearview monitor thoughtfully positioned on the dash, you can clearly see what's happening behind your coach as you back up.



C



D

3809/Deco Blue

JULY 19 ~

Met the Adamses from Tallahassee at the campground cookout this evening. What wonderful people! They seem to have been just about everywhere!



A



B

3809/Deco Blue



C

3809/Deco Blue

- A. The Dutch Star bedroom is notable for the windows in its slideout section, its accommodating wardrobe space and its comfortable bedding.
- B. Featured in the private bathroom is a lavatory countertop of easy-to-clean Corian® and a mirrored medicine cabinet.
- C. A good night's rest is yours in Dutch Star's soft yet supportive queen-size bed enhanced by designer bedding. Note the numerous cabinets.
- D. For added elegance—and convenience—the bathroom shower has an easy-to-clean, one-piece fiberglass surround and a decorative door.
- E. Standard in the bedroom is this flat-screen 19" Sony® color TV with its own built-in cabinet shelf.



D

3809/Deco Blue



E

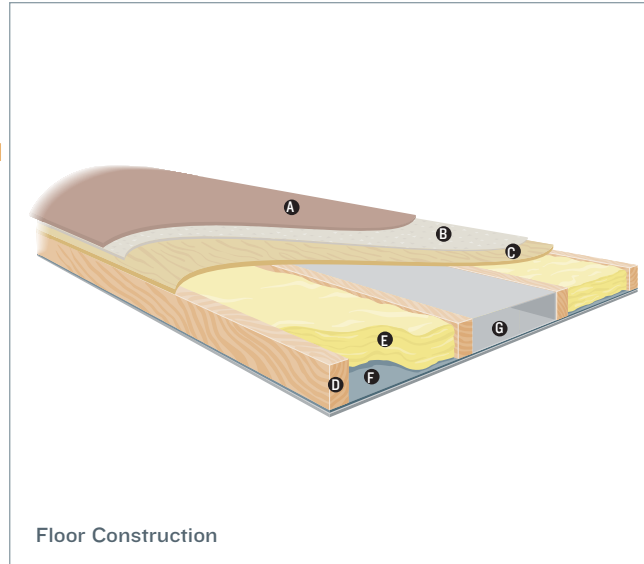
3809/Deco Blue

NEWMAR'S FREEDOM WARRANTY™

Your Dutch Star Diesel Pusher is built to take you as far as your road rolls on... for as long as you roll on with it. Because there's more than enough solid engineering here to ensure years of travel pleasure.

Dutch Star is assembled on the same production line, to the same exacting standards and with the same meticulous care, as all Newmar motorhomes. It also embodies Newmar's long history of product innovation and industry "firsts." For us, it's a matter of pride. And tradition. Of taking personal responsibility and building a product that each of us, ourselves, would want to own.

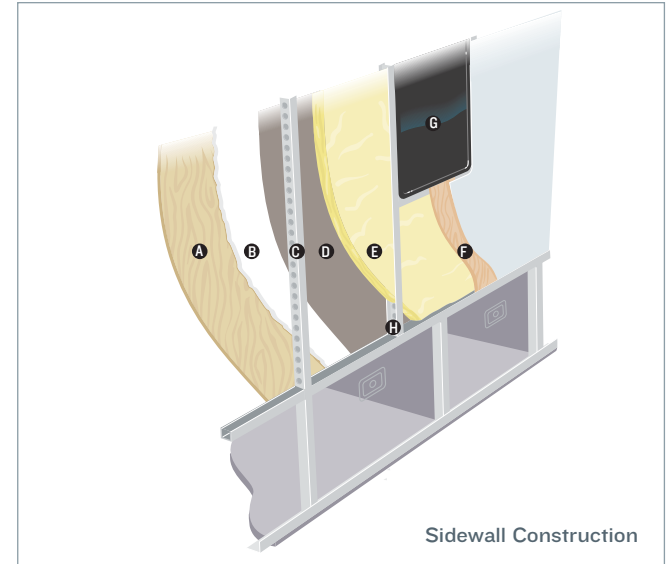
As proof of our commitment, we back every motorhome we make with a three-year/50,000-mile, bumper-to-bumper limited warranty: The Newmar Freedom Warranty. Ask your dealer for details. You're sure to find coverage this comprehensive a truly liberating experience.



Floor Construction

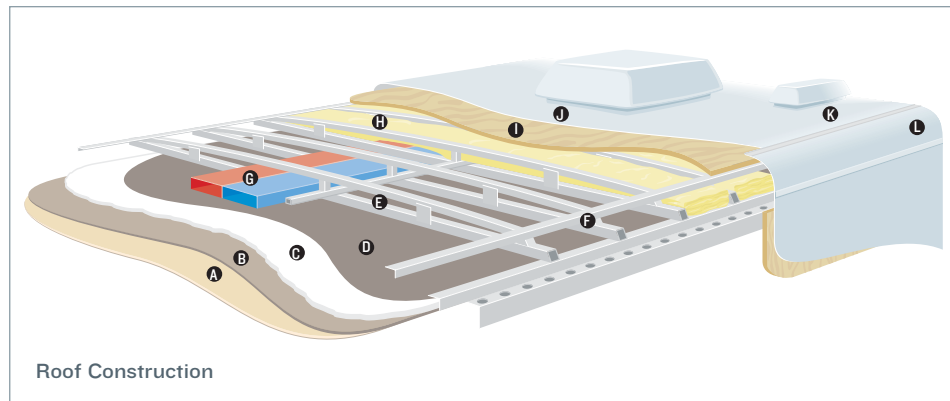
- A. Plush carpet*
- B. Carpet padding
- C. 5/8" floor decking
- D. 2" x 3" wood stringer
- E. Fiberglass batten insulation
- F. Polyethylene moisture barrier
- G. In-floor heating ducts

*Ceramic tile, simulated floor and simulated tile options also available.



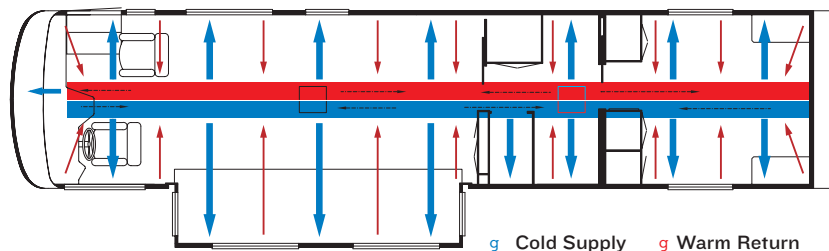
Sidewall Construction

- A. Plywood interior wallboard
- B. 5/8" bead foam
- C. 1.5" C-channel aluminum studs with punched holes
- D. Kraft paper vapor barrier
- E. Fiberglass insulation
- F. Composite one-piece gel coat exterior sidewall
- G. Framed windows
- H. Aluminum sidewall structure with 16" on-center framing



Roof Construction

- A. Padded vinyl overlay
- B. 3/16" panel
- C. 5/8" bead foam
- D. Kraft paper vapor barrier
- E. 1" tubular aluminum truss rafter with full joint weld
- F. Welded aluminum crowned roof structure with 16" on-center framing
- G. True Central Air Conditioning—insulated ducted distribution and return
- H. Fiberglass batten insulation
- I. 7mm wood decking
- J. Brite-Tek or fiberglass roof
- K. One-piece fiberglass caps
- L. Aluminum or fiberglass wrap—additional aluminum reinforced extrusion connecting sidewall to roof for most slideouts



TRUE CENTRAL AIR: Newmar's True Central Air System—standard with every Newmar RV—is just like those found in most site-built homes. It's actually two separate, fully ducted systems: one to distribute incoming cool air, the other to quickly and effectively remove warm air from every living area.



A



B



C



D



E

EXTERIOR FEATURES

- A. Cummins® 370 HP ISL engine now featured on the optional Spartan chassis
- B. Large, powered sideview mirrors
- C. Two new options for 2004: broadband Internet access and a low-profile satellite TV antenna
- D. Accommodating storage compartments with hydraulic piston-supported doors
- E. Attractive fiberglass end cap

Amy and I stopped to our hearts' content in the city today, while Danny and his granddad went marlin fishing.

INTERIOR COLORS

- A. Onyx
- B. Deco Blue
- C. Silver Green

- D. Pebble Beach
- E. Iris Dusk

Real woods will have variations in grain and color. Natural wood products will darken over time.





A



B



C



D



EXTERIOR COLORS

| | |
|---|---|
| <ul style="list-style-type: none"> A. Graystone (Vinyl) B. Galaxy Gold (Vinyl) C. Onyx (Full Paint) D. Deco Blue (Full Paint) | <ul style="list-style-type: none"> E. Silver Green (Full Paint) F. Pebble Beach (Full Paint) G. Iris Dusk (Full Paint) |
|---|---|



E



F



G

NEWMARCORP.COM

Here you'll discover the latest model specifications, floor plans and options, as well as information on who we are, how we work and what we believe in.

FULL-PAINT MASTERPIECE FINISH™

The Full-Paint Masterpiece Finish from Newmar creates an exterior of stunning beauty and incredible endurance — a true work of art. Newmar is an industry leader in applying full body paint to its coaches. We are pleased to offer it as an option on your Dutch Star Diesel Pusher.



THE LEADER AT EVERY TURN™
www.freightlinerchassis.com



www.spartanmotors.com

Wonder where our next road will lead?

THE NEWMAR KOUNTRY KLUB

As a Newmar owner, you qualify for membership in the Newmar Kountry Klub. Join your local chapter, and just look at the perks you'll enjoy: friendship, fun and adventure with other Newmar owners • rallies and caravans • special RV show events • discounts on RV services • a free monthly Klub magazine • Klub merchandise. And that's just for starters.

Join today! Call 877-639-5582, toll-free, or visit the Klub section of *newmarcorp.com*.

THE NEWMAR FACTORY TOUR

We'd love to have you visit our state-of-the-art production facility in Nappanee, Indiana. For details, including tour days and times, please call 574-773-7791.

NEWMAR CORPORATION
355 N DELAWARE ST
PO BOX 30
NAPPANEE IN 46550-0030
574-773-7791 Fax 574-773-2895
www.newmarcorp.com

Official Newmar Dealer:



NEWMAR QUALITY: A WAY OF LIFE

Some features shown in our literature are optional. Colors and finishes are photographic representations: The actual materials may look different. Prices, specifications and floor plans are subject to change at Newmar's discretion without prior written notice or obligation. Please see your dealer for actual samples and specifications. © 2003 Newmar Corporation. Printed in the U.S.A. (05/03)

2004 DUTCH STAR
DIESEL PUSHER BY NEWMAR



2004 DUTCH STAR

DIESEL PUSHER BY NEWMAR

DESTINATION:

Florida Coast



NEWMARCORP.COM

SPECIFICATIONS

STANDARD FEATURES

MOTORIZED CHASSIS FEATURES

- Cruise Control
- Stainless Steel Wheel Simulators
- Tilt and Telescope Steering Wheel
- Recessed Fuel Fills with Crossover to Fill from Either Side
- Freightliner® Chassis
- Anti-Lock Braking System
- Back-Up Alarm

AIR CONDITIONING & HEATING

- Two 13,500-Btu Penguin® Central Air Conditioners
- LP Leak Detector
- Dash Heater and High-Output Air Conditioner

APPLIANCES & ACCESSORIES

- Ten-Gal. Gas/Electric Water Heater with Direct-Spark Ignition
- Spacesaver Microwave
- Flat-Screen Color TV in Living Area
- Flat-Screen Color TV in Bedroom
- Three-Burner Recessed Range with Glass Oven Door and Piezzo Ignition
- AM/FM Dash Radio with Compact Disc Player
- Dometic® 3862 Refrigerator (8 Cu. Ft.)
- Color Rearview Monitor System
- TV Antenna with Power Booster, One Exterior Jack and Two Interior Jacks
- VCR and TV Video Selector Switch
- Washer/Dryer Prep for Compact Washer/Dryer
- Speaker Switch System
- Air Horns
- Cable TV Connection with RG 6 Coax
- Satellite Prep (Phone, TV Jack and Recept)

CABINETS & FURNITURE

- Flexsteel® Leather/Vinyl Front Seats with Six-Way Power, Lumbar Support and Passenger Footrest
- Flexsteel Swivel Rocker Recliner
- Flexsteel Sofa with a Drawer
- Drawers with Metal Guides
- Hidden-Leaf Dinette Table with Two Fixed Chairs and Two Folding Chairs
- Oak Hardwood Raised-Panel Cabinet Doors
- Corian® Countertop in Kitchen with Undermount Acrylic Sink and Flush Sink Covers
- Corian® Countertop in Bathroom with Porcelain Bowl
- Lifts on Bed to Access Storage Area

ELECTRICAL FEATURES

- 75-amp Converter
- Four 6 V Batteries
- Battery Disconnect for House Batteries
- 7,500-watt Guardian® Diesel Generator on Slides with Automatic Changeover
- 5-watt Solar Panel to Charge Chassis Battery
- 50-amp Electrical Service with Flexible Cord
- Emergency Engine Start Switch
- Exterior Security Lights, One Installed on Each Side
- Lights in Exterior Storage Compartments
- Driving Lights
- ICC Light Flasher Switch
- Interior Courtesy Lights
- Lights in Wardrobes
- Midship Side Turn Signals

EXTERIOR FEATURES

- BriteTek® Roof with 7mm Decking
- Convex Exterior Mirrors with Remote Control and Defrost
- Gel-Coated Fiberglass Exterior Sides
- Class 5, 10,000 lb. Hitch
- Hydraulic Leveling Jacks with Touch Manual Control and Air Dump

INTERIOR FEATURES

- Day/Night Pleated Window Shades and Lambrequins
- Padded Vinyl Ceiling
- Quilted Bedspread with Reverse Sham and Accent Pillows
- Simulated Plank Floor in Kitchen and Bath Areas
- Hardwood/Fabric Fascia on Living Area Slideout
- Sun Shade on Driver and Passenger Side Windows

PLUMBING & BATH FEATURES

- Exterior Shower, Located on Off-Door Side
- Monitor Panel
- Sewage Holding-Tank Rinse
- SeaLand® 500+ China Stool
- Fiberglass Tub/Shower with Glass Shower Door
- Water-Heater Bypass System
- Demand Water System with Shurflo Pump

CONSTRUCTION FEATURES

- Aluminum-Frame Sidewalls and Roof Construction, 16" On Center
- Roof R-Value Rating: 16
- Sidewall R-Value Rating: 11
- Floor R-Value Rating: 12
- 5/8" Foam Insulation Laminated in Sidewalls and Ceiling
- R7 Fiberglass Insulation in Sidewalls and Floor, R11 in Roof

WINDOWS, AWNINGS & VENTS

- Double Pane Tinted Safety-Glass Windows
- Automatic Double Entrance-Door Step
- Power Vent in Bathroom with Wall Switch
- Fan-Tastic® Vent with Rain Sensor in Kitchen Area
- Skylight in Bathroom
- Front Entry Door with Power Flush Stepwell Cover

OPTIONAL FEATURES

MOTORIZED CHASSIS FEATURES

- Spartan® Mountain Master Chassis
- Polished Aluminum Wheels
- Trip Tek Electronic Travel Information (5 lb.)

APPLIANCES & ACCESSORIES

- 30" Convection Microwave with Three-Burner Cooktop (13 lb.)
- Norcold® Four-Door Refrigerator (45 lb.)
- Dometic® 1062 Refrigerator, 10 Cu. Ft. (91 lb.)
- Dometic I292 Side-By-Side Refrigerator, 12 Cu. Ft. (47 lb.)
- 100 lb. Norcold® Freezer (113 lb.)
- CB Radio (2 lb.)
- Compact Washer/Dryer (185 lb.)
- Two-Piece Washer/Dryer (210 lb.)
- External Entertainment Center (132 lb.)
- Navigation System (12 lb.)
- U-Line Icemaker (57 lb.)

CABINETS & FURNITURE

- Arnold Cherry Cabinets
- Coastal Cherry Hardwood Cabinets (25 lb.)
- Maple Cream Cabinets
- Oak Hardwood Cabinets (25 lb.)
- Summer Maple Hardwood Cabinets (25 lb.)
- Washington Cherry Hardwood Cabinets (25 lb.)
- Built-In Booth Dinette (23 lb.)
- Combination Desk/Dinette Table (50 lb.)
- King-Size Bed
- Undermount Solid-Surface Sinks (25 lb.)

ELECTRICAL FEATURES

- 400-watt Inverter for Dash TV (10 lb.)
- Roof-Mounted Spotlight (3 lb.)
- Trace 2000-watt Inverter (50 lb.)
- 7,500-watt Onan® Diesel Quiet Series Generator (-80 lb.)
- 8,000-watt Power Tech® Diesel Quiet Series Generator (-34 lb.)
- Exterior Security Lights, Two Installed on Each Side (2 lb.)
- Recessed Docking Lights (4 lb.)
- Solar Prep, Wire from Roof to Battery Compartment (1 lb.)

EXTERIOR FEATURES

- Convex Exterior Chrome Mirrors with Remote Control and Defrost (5 lb.)
- Fully Molded Fiberglass Roof/Wrap
- Rear Ladder (4 lb.)

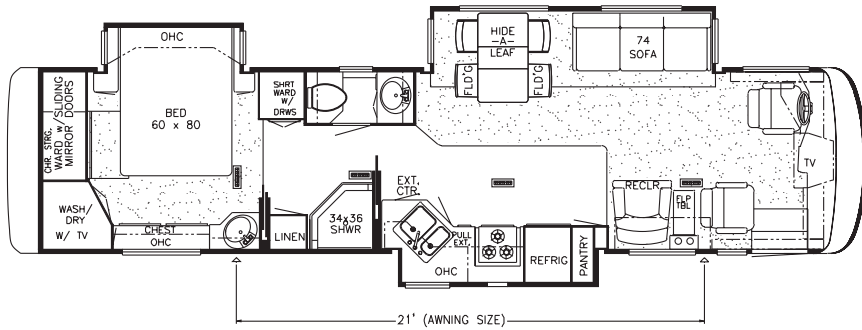
INTERIOR FEATURES

- Ceramic Floor Tile in Kitchen and Bathroom Areas (110 lb.)
- Ceramic Floor Tile Between Driver and Passenger Seats (75 lb.)
- 12" Marble-Look Floor Tile in Kitchen and Bathroom Areas
- Power-Activated Sun Visors

WINDOWS, AWNINGS & VENTS

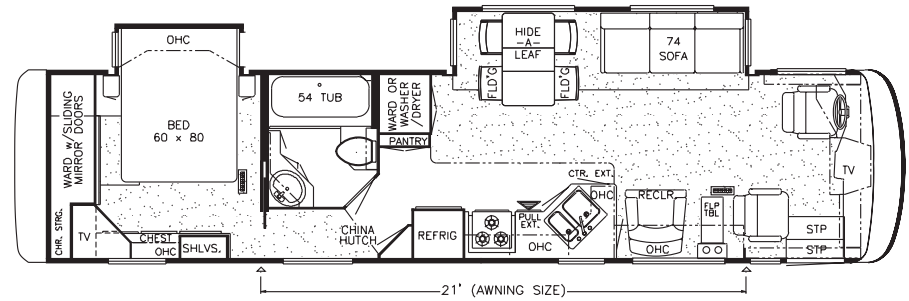
- Fan-Tastic® Vent in Bathroom (11 lb.)
- Driver's-Side Power Window (50 lb.)

FLOOR PLANS



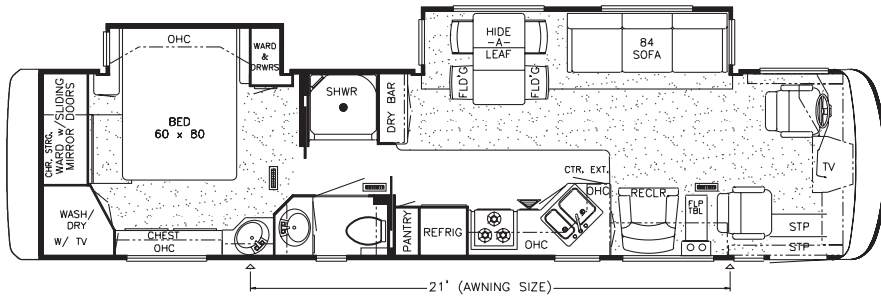
Model Shown: DSDP 3807

Floor Plan Options: K124, K280-I, K421-A



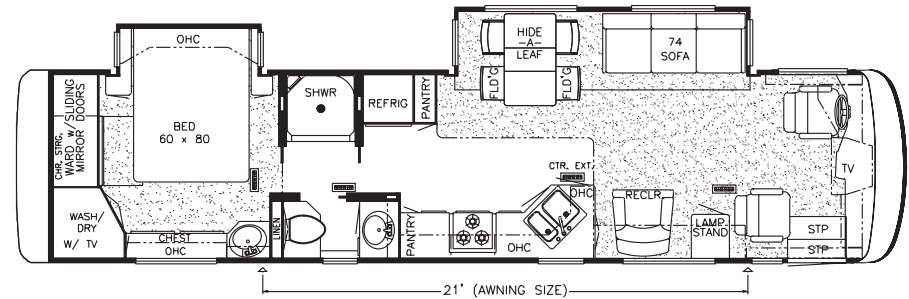
Model Shown: DSDP 3809

Floor Plan Options: K124, K140, K326, K420



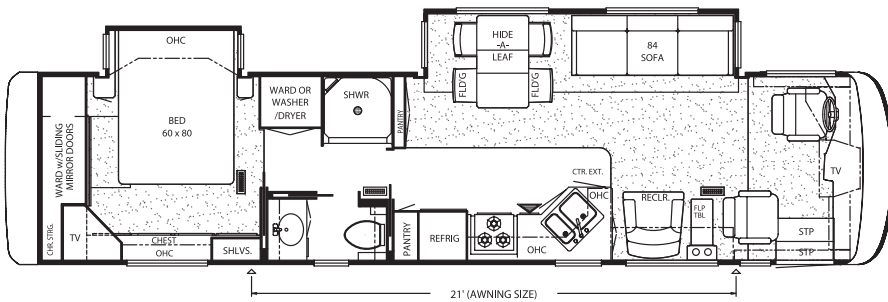
Model Shown: DSDP 3810

Floor Plan Options: K124, K140, K280-6, K326, K420, K630



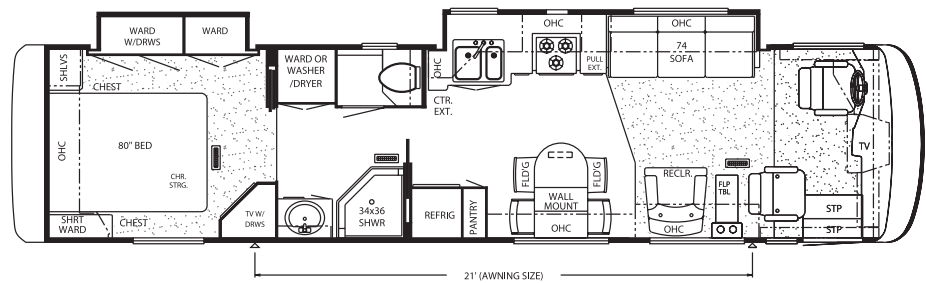
Model Shown: DSDP 3811

Floor Plan Options: K124, K235, K280-7, K420, K915



Model Shown: DSDP 3812

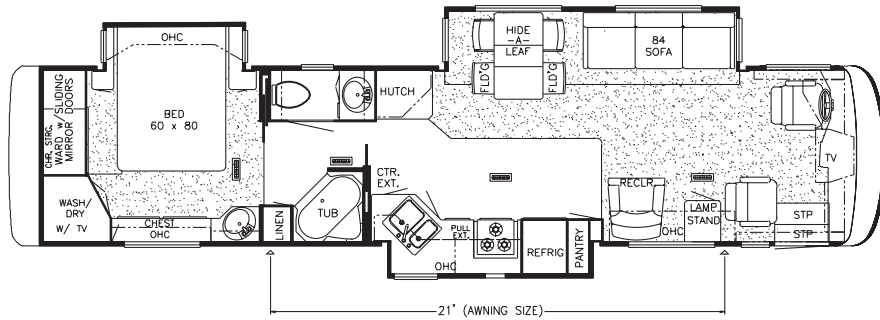
Floor Plan Options: K124, K140, K326, K420



Model Shown: DSDP 3813

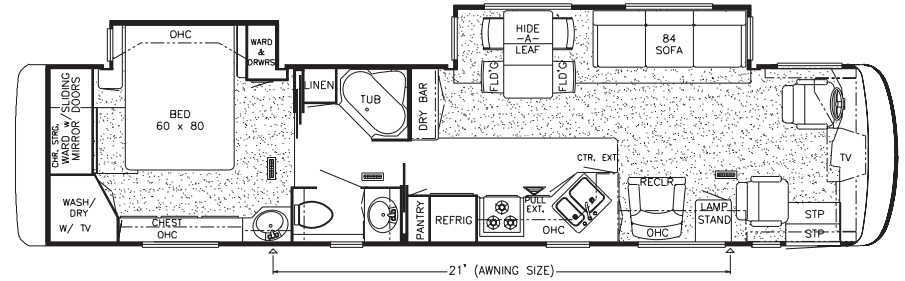
Floor Plan Options: K140, K326, K421, K730

FLOOR PLANS



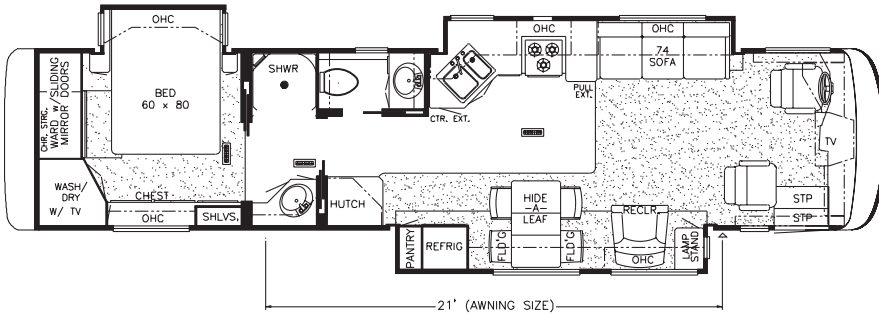
Model Shown: DSDP 4009

Floor Plan Options: K124, K280-8, K420, K630, K910



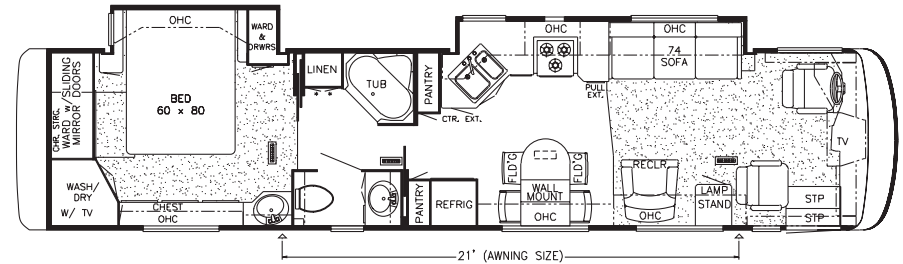
Model Shown: DSDP 4010

Floor Plan Options: K124, K235, K420, K630, K280-3, K910



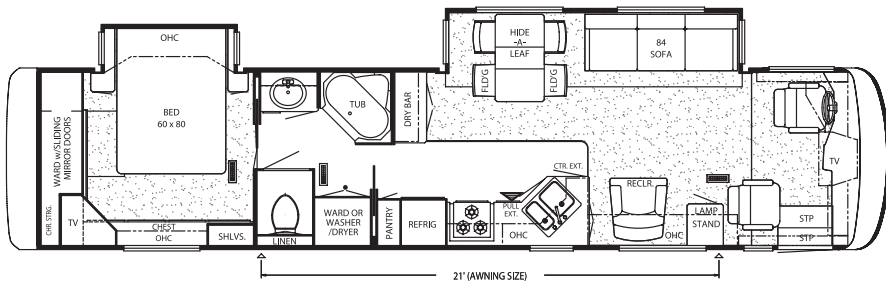
Model Shown: DSDP 4011

Floor Plan Options: K421, K730



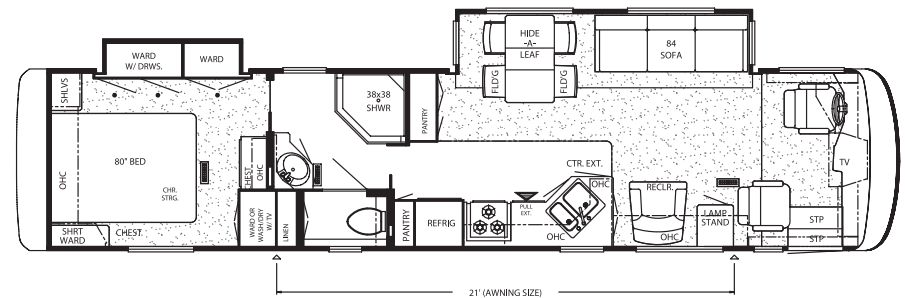
Model Shown: DSDP 4012

Floor Plan Options: K280-3, K421, K630, K730, K910



Model Shown: DSDP 4013

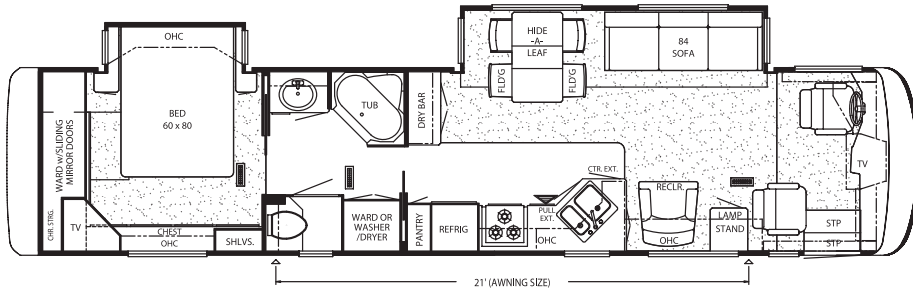
Floor Plan Options: K121, K124, K235, K420, K915



Model Shown: DSDP 4014

Floor Plan Options: K124, K235, K420, K910

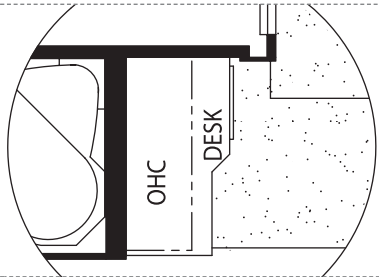
FLOOR PLANS



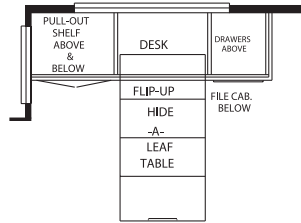
Model Shown: DSDP 4015

Floor Plan Options: K12I, K124, K235, K420, K910

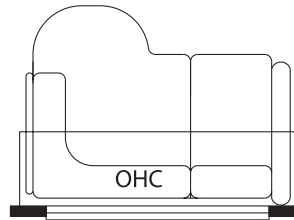
FLOOR PLANS OPTIONS



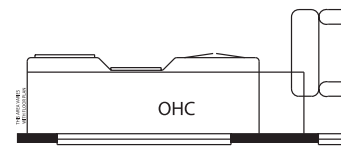
K12I: DESK
4013, 4015



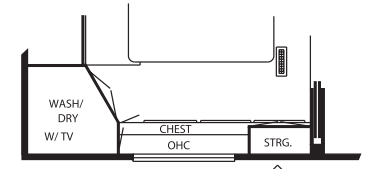
K124: DINETTE/COMPUTER COMBO 3807, 3809,
3810, 3811, 3812, 4009, 4010, 4013, 4014, 4015



K140: 58" LEATHER L-SOFA
3809, 3810, 3812, 3813



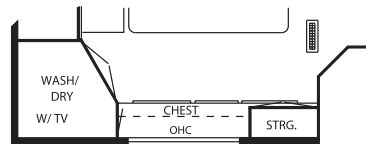
K235: 61" DESK
3811, 4010, 4012, 4013, 4014, 4015



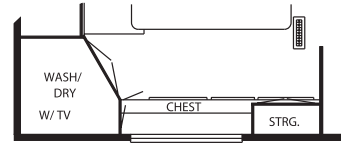
K280-I: DRESSER CENTER WITH STORAGE
3807



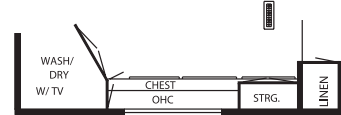
K280-3: DRESSER CENTER WITH STORAGE
4010, 4012



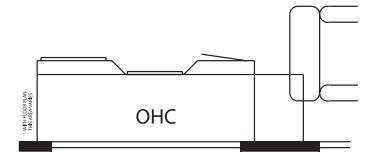
K280-6: DRESSER CENTER WITH STORAGE
3810



K280-7: DRESSER CENTER WITH STORAGE
3811

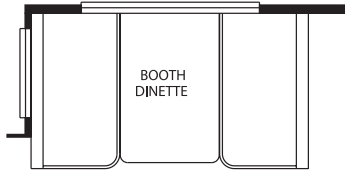


K280-8: DRESSER CENTER WITH STORAGE
4009

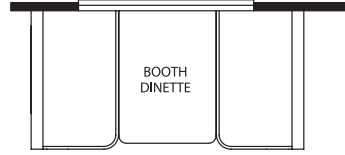


K326: 53" DESK
3809, 3810, 3812, 3813

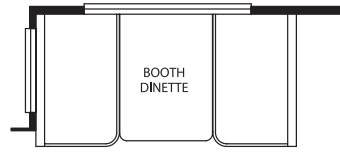
FLOOR PLAN OPTIONS



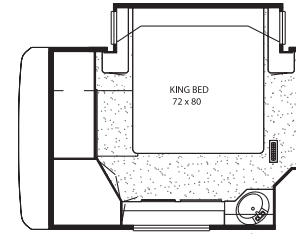
K420: BOOTH DINETTE 3809, 3810, 3811, 3812, 4009, 4010, 4013, 4014, 4015



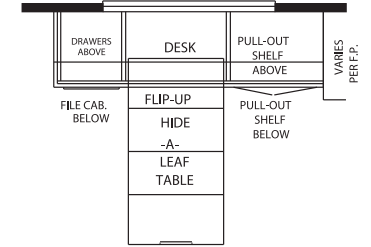
K421: BOOTH DINETTE 3813, 4011, 4012



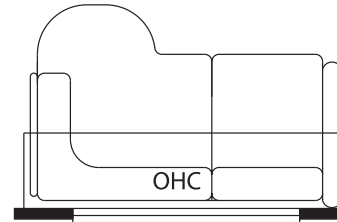
K421-A: BOOTH DINETTE 3807



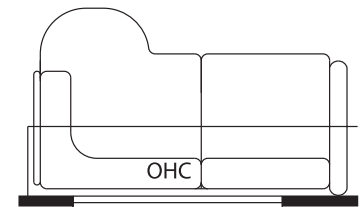
K630: KING BED 3810, 4009, 4010, 4012



K730: DINETTE-COMPUTER STATION COMBO 3813, 4011, 4012



K910: 66" L-SOFA 4009, 4010, 4012, 4014, 4015



K915: 72" L-SOFA WITH INCLINER DSDP: 3811, 4013

FLOOR PLAN SPECIFICATIONS

| FLOOR PLAN | APP. OVERALL LENGTH | WIDTH | APP. OVERALL HEIGHT | INTERIOR WIDTH | INTERIOR HEIGHT | GREY | SEWAGE | WATER | LP | FURNACE | WATER HEATER |
|------------|---------------------|--------|---------------------|----------------|-----------------|---------|---------|----------|---------|------------|--------------|
| DSDP 3807 | 38' 9" | 101.5" | 12' 1" | 95.5" | 80" | 65 gal. | 45 gal. | 105 gal. | 32 gal. | 42,000 Btu | 10 gal. |
| DSDP 3809 | 38' 9" | 101.5" | 12' 1" | 95.5" | 80" | 65 gal. | 45 gal. | 105 gal. | 32 gal. | 42,000 Btu | 10 gal. |
| DSDP 3810 | 38' 9" | 101.5" | 12' 1" | 95.5" | 80" | 65 gal. | 45 gal. | 105 gal. | 32 gal. | 42,000 Btu | 10 gal. |
| DSDP 3811 | 38' 9" | 101.5" | 12' 1" | 95.5" | 80" | 65 gal. | 45 gal. | 105 gal. | 32 gal. | 42,000 Btu | 10 gal. |
| DSDP 3812 | 38' 9" | 101.5" | 12' 1" | 95.5" | 80" | 65 gal. | 45 gal. | 105 gal. | 32 gal. | 42,000 Btu | 10 gal. |
| DSDP 3813 | 38' 9" | 101.5" | 12' 1" | 95.5" | 80" | 65 gal. | 45 gal. | 105 gal. | 32 gal. | 42,000 Btu | 10 gal. |
| DSDP 4009 | 40' 9" | 101.5" | 12' 1" | 95.5" | 80" | 65 gal. | 45 gal. | 105 gal. | 32 gal. | 42,000 Btu | 10 gal. |
| DSDP 4010 | 40' 9" | 101.5" | 12' 1" | 95.5" | 80" | 65 gal. | 45 gal. | 105 gal. | 32 gal. | 42,000 Btu | 10 gal. |
| DSDP 4011 | 40' 9" | 101.5" | 12' 1" | 95.5" | 80" | 65 gal. | 45 gal. | 105 gal. | 32 gal. | 42,000 Btu | 10 gal. |
| DSDP 4012 | 40' 9" | 101.5" | 12' 1" | 95.5" | 80" | 65 gal. | 45 gal. | 105 gal. | 32 gal. | 42,000 Btu | 10 gal. |
| DSDP 4013 | 40' 9" | 101.5" | 12' 1" | 95.5" | 80" | 65 gal. | 45 gal. | 105 gal. | 32 gal. | 42,000 Btu | 10 gal. |
| DSDP 4014 | 40' 9" | 101.5" | 12' 1" | 95.5" | 80" | 65 gal. | 45 gal. | 105 gal. | 32 gal. | 42,000 Btu | 10 gal. |
| DSDP 4015 | 40' 9" | 101.5" | 12' 1" | 95.5" | 80" | 65 gal. | 45 gal. | 105 gal. | 32 gal. | 42,000 Btu | 10 gal. |

CHASSIS SPECIFICATIONS

FREIGHTLINER CHASSIS INFORMATION (STANDARD)

| FLOOR PLAN | ENGINE HP | AXLE RATIO | FUEL CAP. | WHEEL BASE | *FRONT GAWR | *REAR GAWR | *GVWR | *GCWR | APP. UVW | APP. NCC |
|------------|-----------|------------|-----------|------------|-------------|------------|------------|------------|------------|-----------|
| DSDP 3807 | 330 | 4.63 | 100 gal. | 252" | 13,200 lb. | 20,000 lb. | 33,200 lb. | 43,200 lb. | 25,993 lb. | 7,207 lb. |
| DSDP 3809 | 330 | 4.63 | 100 gal. | 252" | 13,200 lb. | 20,000 lb. | 33,200 lb. | 43,200 lb. | 24,755 lb. | 8,445 lb. |
| DSDP 3810 | 330 | 4.63 | 100 gal. | 252" | 13,200 lb. | 20,000 lb. | 33,200 lb. | 43,200 lb. | 25,134 lb. | 8,066 lb. |
| DSDP 3811 | 330 | 4.63 | 100 gal. | 252" | 13,200 lb. | 20,000 lb. | 33,200 lb. | 43,200 lb. | 24,780 lb. | 8,420 lb. |
| DSDP 3812 | 330 | 4.63 | 100 gal. | 252" | 13,200 lb. | 20,000 lb. | 33,200 lb. | 43,200 lb. | 24,743 lb. | 8,457 lb. |
| DSDP 3813 | 330 | 4.63 | 100 gal. | 252" | 13,200 lb. | 20,000 lb. | 33,200 lb. | 43,200 lb. | 24,717 lb. | 8,483 lb. |
| DSDP 4009 | 330 | 4.63 | 150 gal. | 276" | 13,200 lb. | 20,000 lb. | 33,200 lb. | 43,200 lb. | 26,511 lb. | 6,689 lb. |
| DSDP 4010 | 330 | 4.63 | 150 gal. | 276" | 13,200 lb. | 20,000 lb. | 33,200 lb. | 43,200 lb. | 25,705 lb. | 7,495 lb. |
| DSDP 4011 | 330 | 4.63 | 150 gal. | 276" | 13,200 lb. | 20,000 lb. | 33,200 lb. | 43,200 lb. | 26,666 lb. | 6,534 lb. |
| DSDP 4012 | 330 | 4.63 | 150 gal. | 276" | 13,200 lb. | 20,000 lb. | 33,200 lb. | 43,200 lb. | 25,709 lb. | 7,491 lb. |
| DSDP 4013 | 330 | 4.63 | 150 gal. | 276" | 13,200 lb. | 20,000 lb. | 33,200 lb. | 43,200 lb. | 25,503 lb. | 7,697 lb. |
| DSDP 4014 | 330 | 4.63 | 150 gal. | 276" | 13,200 lb. | 20,000 lb. | 33,200 lb. | 43,200 lb. | 25,433 lb. | 7,767 lb. |
| DSDP 4015 | 330 | 4.63 | 150 gal. | 276" | 13,200 lb. | 20,000 lb. | 33,200 lb. | 43,200 lb. | 25,503 lb. | 7,697 lb. |

SPARTAN CHASSIS INFORMATION (OPTIONAL)

| FLOOR PLAN | ENGINE HP | AXLE RATIO | FUEL CAP. | WHEEL BASE | *FRONT GAWR | *REAR GAWR | *GVWR | *GCWR | APP. UVW | APP. NCC |
|------------|-----------|------------|-----------|------------|-------------|------------|------------|------------|------------|-----------|
| DSDP 3807 | 370 | 4.88 | 100 gal. | 252" | 13,200 lb. | 20,000 lb. | 33,200 lb. | 43,200 lb. | 26,213 lb. | 6,987 lb. |
| DSDP 3809 | 370 | 4.88 | 100 gal. | 252" | 13,200 lb. | 20,000 lb. | 33,200 lb. | 43,200 lb. | 24,975 lb. | 8,225 lb. |
| DSDP 3810 | 370 | 4.88 | 100 gal. | 252" | 13,200 lb. | 20,000 lb. | 33,200 lb. | 43,200 lb. | 25,354 lb. | 7,846 lb. |
| DSDP 3811 | 370 | 4.88 | 100 gal. | 252" | 13,200 lb. | 20,000 lb. | 33,200 lb. | 43,200 lb. | 25,000 lb. | 8,200 lb. |
| DSDP 3812 | 370 | 4.88 | 100 gal. | 252" | 13,200 lb. | 20,000 lb. | 33,200 lb. | 43,200 lb. | 24,963 lb. | 8,237 lb. |
| DSDP 3813 | 370 | 4.88 | 100 gal. | 252" | 13,200 lb. | 20,000 lb. | 33,200 lb. | 43,200 lb. | 24,937 lb. | 8,263 lb. |
| DSDP 4009 | 370 | 4.88 | 150 gal. | 276" | 13,200 lb. | 20,000 lb. | 33,200 lb. | 43,200 lb. | 26,731 lb. | 6,469 lb. |
| DSDP 4010 | 370 | 4.88 | 150 gal. | 276" | 13,200 lb. | 20,000 lb. | 33,200 lb. | 43,200 lb. | 25,925 lb. | 7,275 lb. |
| DSDP 4011 | 370 | 4.88 | 150 gal. | 276" | 13,200 lb. | 20,000 lb. | 33,200 lb. | 43,200 lb. | 26,886 lb. | 6,314 lb. |
| DSDP 4012 | 370 | 4.88 | 150 gal. | 276" | 13,200 lb. | 20,000 lb. | 33,200 lb. | 43,200 lb. | 25,929 lb. | 7,271 lb. |
| DSDP 4013 | 370 | 4.88 | 150 gal. | 276" | 13,200 lb. | 20,000 lb. | 33,200 lb. | 43,200 lb. | 25,723 lb. | 7,477 lb. |
| DSDP 4014 | 370 | 4.88 | 150 gal. | 276" | 13,200 lb. | 20,000 lb. | 33,200 lb. | 43,200 lb. | 25,653 lb. | 7,547 lb. |
| DSDP 4015 | 370 | 4.88 | 150 gal. | 276" | 13,200 lb. | 20,000 lb. | 33,200 lb. | 43,200 lb. | 25,723 lb. | 7,477 lb. |

Lengths, Heights, Widths and Dry Weights are approximate. Weight will vary based on optional equipment added to the above base weight.

GAWR: Gross Axle Weight Rating is the maximum permissible weight for an axle.

GVWR: Gross Vehicle Weight Rating is the maximum permissible weight of a fully loaded motorhome.

GCWR: Gross Combination Weight Rating is the value specified by the manufacturer of the vehicle as the maximum allowable loaded weight of this motorhome and any towed trailer or towed vehicle.

UVW: Unloaded Vehicle Weight is the weight of this motorhome as built at the factory with full fuel, engine oil and coolants. The UVW does not include cargo, fresh water, LP gas or dealer-installed accessories.

NCC: Net Carrying Capacity is the maximum weight of all occupants, including the driver, personal belongings, food, fresh water, waste water, LP gas, tools, tongue weight of towed vehicle, dealer installed accessories, etc., that can be carried by the motorhome.

*Specifications supplied by chassis manufacturer.



THE LEADER AT EVERY TURN™
www.freightlinerchassis.com



www.spartanmotors.com

Wonder where our next road will lead?

THE NEWMAR KOUNTRY KLUB

As a Newmar owner, you qualify for membership in the Newmar Kountry Klub. Join your local chapter, and just look at the perks you'll enjoy: friendship, fun and adventure with other Newmar owners • rallies and caravans • special RV show events • discounts on RV services • a free monthly Klub magazine • Klub merchandise. And that's just for starters.

Join today! Call 877-639-5582, toll-free, or visit the Klub section of newmarcorp.com.

THE NEWMAR FACTORY TOUR

We'd love to have you visit our state-of-the-art production facility in Nappanee, Indiana. For details, including tour days and times, please call 574-773-7791.

NEWMAR CORPORATION
355 N DELAWARE ST
PO BOX 30
NAPPANEE IN 46550-0030
574-773-7791 Fax 574-773-2895
www.newmarcorp.com

Official Newmar Dealer:



NEWMAR QUALITY: A WAY OF LIFE

Some features shown in our literature are optional. Colors and finishes are photographic representations: The actual materials may look different. Prices, specifications and floor plans are subject to change at Newmar's discretion without prior written notice or obligation. Please see your dealer for actual samples and specifications. © 2003 Newmar Corporation. Printed in the U.S.A. (05/03)