

INFINITY

2004



THE INFINITY CLASS A MOTORHOME...EXCEPTIONAL STYLE, CLASSIC ELEGANCE



Shown with Santissima Taupe interior, Mushroom carpet, Cherry cabinetry option, and optional UltraLeather™ sofa and Euro recliner with ottoman.

Extraordinary. That sums up the Infinity Class A motorhome. With exceptional quality.

Distinctive interiors. Classic appointments. And unmatched comfort. The Infinity redefines luxury motorhome travel.

You can choose from a wide selection of standard and optional features. It's easy to find a model to meet your needs, tastes and lifestyle. Plus, our thoughtfully designed floorplans offer easy accessibility, convenience and comfortable living.

When it comes to luxury Class A motorhomes, nothing else measures up. In comfort. In quality. In value.



The front overhead area features a 24" flat screen color television and ample storage cabinets with glass inserts on either side. It is also equipped with a standard XM satellite-ready, AM/FM stereo with compact disc player. The cockpit area is designed for maximum driver and passenger comfort—with optional UltraLeather™ seats that offer the highest standards of beauty and luxury, with unsurpassed comfort and durability. A convenient computer hook-up (including a 110V outlet and phone jack), is located on the passenger side. A large panoramic windshield provides added driver safety.

Infinity

The deluxe kitchen is well designed to meet your meal preparation and food storage needs. The gently curved kitchen countertop in a new true Corian® color is an attractive enhancement. A contemporary 6" beveled mirror on the backsplash adds a touch of elegance.

Spacious cabinets with Brushed Nickel hardware are available in a classic Hunt Club Oak (standard) or lustrous Cherry finish (option). All storage drawers have double metal roller guides for added durability and easy access.

The kitchen is equipped with high-quality appliances such as a spacious 8-cubic-foot refrigerator and 30" convection microwave oven with three-burner gas range top.



Shown with Hearthstone Raven interior, Wheat carpet, Cherry cabinetry option and optional side-by-side refrigerator with raised panel inserts.

All Infinity motorhomes are built to meet stringent high-quality standards—from the inside out. You'll find a variety of distinctive floorplans featuring double and triple slideout models that dramatically expand your living area.

With a great combination of exquisite styling, plush furnishings and ergonomic design, the Infinity surrounds you in a magnificent environment of comfort and world-class luxury. Standard features include a premium quality laminate flooring in the galley, bathroom and step well; plush wall-to-wall carpeting in the living area and bedroom; and contemporary beveled mirrors in the living area.



Shown with Hearthstone Raven interior, Wheat carpet and Cherry cabinetry option. The optional legless dinette features a beautiful laminate tabletop with Corian® edge, two beautifully upholstered chairs and two folding chairs. The decorative buffet provides added countertop space when entertaining and cabinet storage underneath.

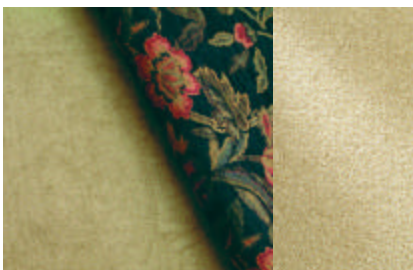


Hunt Club Oak



Cherry

INTERIOR DECOR PACKAGES



Hearstone Raven, Wheat carpet



Matrix Green, Wheat carpet



Santissima Taupe, Mushroom carpet

A TRANQUIL ESCAPE FOR REST AND RELAXATION



Shown with Santissima Taupe interior, Wheat carpet and Cherry cabinet option. Model 36A features a handsomely fashioned French door and window that add a touch of style, grace and beauty.



The full rear bath on Model 36Z is shown with Hearthstone Raven interior and Cherry cabinetry option. The standard residential height lavatory with decorative Corian® counter-top has added storage space for bathroom essentials.



Model 36A features a smart-looking vanity with mirror and chair, plus a comfortable upholstered lounge chair. There is also plenty of cabinet and wardrobe storage to accommodate your personal belongings.

The spacious bedroom can provide an escape from a busy day—with all the amenities for you to relax in comfort and privacy. You can enjoy your favorite programs on the 20" flat screen television, or just curl up with a good book before bed. Attractive bedroom appointments include a queen-size bed, inner spring mattress and color-coordinated bedspread and pillow shams.

The standard bathroom offers first-class style and convenience. It features a skylight in the shower, attractive medicine cabinet with beveled glass door, and marine toilet. You can add the finishing touch to your bathing area with a one-piece fiberglass shower or garden tub with glass shower doors and decorative fixtures. Model 36Z features a bath-and-a-half.

THE FOUR WINDS QUALITY DIFFERENCE

THE FOUR WINDS QUALITY DIFFERENCE

What sets Four Winds International apart from other manufacturers? It's our level of quality. Quality in our distinctive exteriors. Elegant, yet functional interiors. The extra attention to detail we provide to all of our interior appointments. Safety features integrated throughout. Durable, long-lasting construction. Those special convenience features designed to make your life a little more comfortable.

We are dedicated to building this same quality in every motorhome we manufacture—from the inside out. It's a commitment we take seriously, and one that you can depend on year after year.

ADDED VALUE, INNOVATIVE DESIGN

Value is an important component integrated into all of our designs. Our ultimate goal is to build the right combination of quality, functionality and durability into each recreational vehicle for an extraordinary value.

For example, all Four Winds

recreational vehicles come with a full two-year, 24,000 mile bumper-to-bumper limited warranty. Plus, you'll also receive a free Customer Care Roadside Assistance Plan for the first year. This program provides complete and fully paid roadside assistance, emergency road service and special support benefits that follow you wherever your travels take you—24-hours a day, seven days a week.

When it comes to innovative design, Four Winds is second to none. From ongoing research and development, computer aided design, regular product testing and keeping up with leading edge technology—we continue in our tradition to enhance the quality and value of our products.

We strive to go beyond your expectations in every Four Winds recreational vehicle so you can enjoy a better quality of life when traveling on the road.

THE DIFFERENCE IS CLEAR

At Four Winds, our customer

service extends even beyond the sale. Our nationwide dealer network is fully equipped and trained to meet your service needs. The experienced Four Winds support staff is available to provide assistance on all technical, service and warranty issues.



We also provide all new owners with a comprehensive owners manual that includes important information about your new recreational vehicle, including components, appliances, operating systems, safety and identification issues, chassis functions, maintenance and care.

Four Winds continues in our commitment to provide high-quality products and support services that result in customer satisfaction—one customer at a time. So whether you are a first-time recreational vehicle owner, or a seasoned one, we want you to enjoy many years of adventures in your Four Winds motorhome. This is the Four Winds difference.

WHY THOR IS YOUR BEST RV VALUE

Thor Industries, Inc., listed on the New York Stock Exchange (THO), proudly traces its history back over seventy years to the pioneering days of the recreational vehicle industry with the founding of Airstream, the industry's oldest and most renowned brand. Our total commitment to quality and our philosophy of putting our customers first has led to our continuous growth.

Today, Thor is the largest builder of recreational vehicles. Thor's strong financial condition and years of solid growth are your assurance that we will be here to serve you for years to come. We think this extra peace of mind is important when you are making a significant investment. Because our customers are always #1 with us, we work harder than other manufacturers to satisfy you.

INFINITY OFFERS SPECIAL FEATURES FOR YOUR CONVENIENCE



The new One-Stop™ System Center houses commonly used switches and controls all in one convenient location. These include the systems indicator (shows holding tank and battery charge levels), water heater control switches, thermostat, generator control and hour meter, and slide-out control.



Ample pass-through exterior storage compartment offers plenty of extra storage for large, bulky items as well as small personal belongings. The fully insulated, locking metal doors are easy to open, and ensure convenient, safe storage for your valued belongings while traveling.



The Below Floor Utility Station is securely enclosed in a seamless Roto-Cast® storage compartment. It houses phone, cable, electrical and plumbing connections where they are kept protected and dry. Everything is clearly marked and simple to connect so set-up and tear-down is a snap.



Shown with standard Desert Sand exterior graphics/paint package.



Shown with standard Pewter Metallic exterior graphics/paint package.



Shown with Titanium exterior paint option.



Shown with Topaz exterior paint option.

BODY CONSTRUCTION/EXTERIOR FEATURES

Standard

- 3" steel welded floor system with in-floor heating
 - Fully laminated roof, walls and floors with high-density block foam insulation
 - Fully welded tubular aluminum roof and sidewall cage construction
 - Wide body design
 - GelCoat fiberglass exterior
 - Choice of exterior graphics/paint packages
 - Seamless fiberglass exterior sidewalls
 - Electrogalvanized steel strapping laminated into walls and ceiling to ensure superior strength for mounting cabinets, fixtures and other appliances
 - Air conditioning ductwork molded right into roof insulation and residential-style ducted heat
 - TuffPex® plumbing system with brass fittings
 - Heated and enclosed utility station with full hook-ups
 - 4-point hydraulic leveling jacks with patented bi-axis leveling
 - Premium one-piece TPO roof—Energy Star approved and labeled
 - Rubber tread entry steps
 - Automatic electric entrance step
 - Exterior slide-out design to protect against sharp edges
 - Factory installed awning with weather shield
 - Roof ladder
 - Exterior shower
- Options

- One-Touch automatic patio awning
- Choice of full-body paint packages—includes chrome mirrors, acrylic patio awning and fiberglass slide room top-pers (with covers)
- 3M film front mask (with full body paint package only)

AUTOMOTIVE/COCKPIT FEATURES

Standard

- Double steel plated fire wall, cab floor and steel reinforced dash
- Factory installed 5,000-lb. hitch
- Large panoramic windshield
- Enlarged driver and passenger windows
- Wood grain dash insert and convenient drink tray
- Dash fans
- Heated, remote exterior mirrors
- Passenger side computer hook-ups including a 110V outlet and phone jack
- One-piece fiberglass front and rear caps
- Low profile engine cover
- Wheel liners
- Fog lights
- Large 22.5" tires

Options

- Back-up camera with audio
- Citizen's band radio
- Power sun visors
- Six-way power driver seat
- Six-way power driver and passenger seats
- UltraLeather™ driver and passenger seats

INTERIOR FEATURES

Standard

LONG-LASTING CONSTRUCTION

Infinity motorhomes feature high-quality construction throughout. These units start with a wide-body design utilizing a 3" 16-gauge tubular steel framed floor system. The aluminum framed roof and walls, as well as the floor are fully laminated, and feature high-density, block foam insulation for added energy savings. The air conditioning ductwork is molded right into the roof insulation for even air circulation. Residential-style ducted heating also provides even heat distribution throughout the entire unit.

Rugged electrogalvanized steel strapping is laminated into the sidewalls to provide superior fastening strength for interior features such as cabinets, valances, furniture and wall coverings. The seamless one-piece synthetic roof membrane is flexible and designed to expand and contract with changing environmental conditions. It also has a full 12-year warranty.

The all-steel construction in the cockpit area provides greater safety and durability. Plus, it reduces noise and vibration. The cockpit also features a double-plated steel firewall and all-steel dash that is fully insulated.

AND OPTIONAL FEATURES

- Choice of interior decor packages
- Wall-to-wall carpeting (living area and bedroom)
- High-quality laminate flooring (galley, bathroom and entry way)
- 13,500 BTU low-profile roof air conditioner—front
- 13,500 BTU low-profile roof air conditioner—rear
- Hunt Club Oak cabinetry with adjustable shelves and no center stile
- Raised oak upper and base cabinet doors and drawer fronts
- Hardware with Brushed Nickel finish
- Hardwood end panels
- Day/night shades throughout
- Windshield privacy curtain
- Contemporary 6" beveled mirrors in living area
- Floor lighting
- Easy access flip-up storage sofa
- Attractive curio cabinet with glass doors and beveled mirror (36A only)
- Telephone jack
- One-Stop™ System Center
- Flush floor slide out (sofa/dinette)
- Washer/dryer prep (36Z only)

Options

- Cherry wood cabinetry
- Fantastic® ceiling fan
- Dual pane windows
- Washer/dryer combination—requires 7.0 KW Onan® generator (36Z only)
- Hide-a-bed sofa
- UltraLeather™ Magic Bed sofa

- UltraLeather™ Euro recliner with ottoman in place of barrel chair
- UltraLeather™ recliner in place of barrel

- chair
- Fabric recliner in place of barrel chair
- 13,500 BTU roof air conditioner with heat strips and solar panel charger

GALLEY

Standard

- 8-cubic-foot double door refrigerator
- 30" convection microwave with 3-burner high-output gas range top
- Single lever kitchen faucet
- Large stainless steel double sink
- Contemporary 6" beveled mirrors on backsplash
- Curved kitchen countertop in new true Corian® color
- Handy slide-out pantry for extra storage
- Silverware tray

Options

- 12-cubic-foot side-by-side refrigerator with ice maker and raised panel inserts (not available with slide-out pantry)
- 12-cubic-foot side-by-side Stainless Steel refrigerator with ice maker (not available with slide-out pantry)
- 3-burner range top with oven
- Legless free-standing dinette with buffet and four chairs

ENTERTAINMENT

Standard

- Cable television hook-up
- 24" flat screen color television—front overhead
- 20" flat screen color television—bedroom
- Television cabinet—bedroom
- XM satellite ready AM/FM stereo with

- compact disc player

Options

- Home theater system with DVD player
- Video cassette recorder
- DVD player
- Satellite dish

BEDROOM/BATHROOM

Standard

- Inner spring mattress
- Bedspread and pillow shams
- Attractive wood headboard with beveled mirrors
- Vanity with stool
- Vanity with chair and additional lounge chair (36A only)
- Classic French bedroom door and window (36A only)
- Convenient residential height bathroom countertop
- Power bath vent
- Marine toilet
- Contemporary medicine cabinet with beveled glass door
- Skylight in shower
- Choice of one-piece fiberglass shower or garden tub with decorative fixtures
- Glass shower doors

SAFETY FEATURES

Standard

- Entry door with deadbolt lock system
- Smoke detector
- Fire extinguisher
- LPG detector
- Carbon monoxide detector
- Three-point seatbelts for the driver and passenger (sidewall design) and seatbelts throughout

ELECTRICAL SYSTEMS

Standard

- 5.5 KW Generac generator
- 50-amp service
- Marine-type detachable power cord
- Satellite prep
- 10-gallon gas/electric water heater
- Water heater bypass system
- Battery disconnect switch
- Emergency start switch
- Second auxiliary battery
- Water filtration system

Options

- 5.5 KW Onan® generator
- 7.0 KW Onan® generator

STORAGE AREAS

Standard

- Large pass-through storage compartment
- Seamless Roto-Cast® storage compartments
- Deluxe heavily insulated aluminum compartment doors
- In-floor slide system allowing for full height storage compartments
- Heated and enclosed Roto-Cast® holding tanks

INFINITY FLOORPLANS

32R



36A



35D



36Z



■ Furniture ■ Carpet ■ Laminate

2004 INFINITY CLASS A MOTORHOME SPECIFICATIONS

Model	32R	35D	36A	36Z
Weight Rating (Lbs.)				
Workhorse Chassis - 8.1L Engine	Vortec	Vortec	Vortec	Vortec
Gross Vehicle (GVWR)	22,000	22,000	22,000	22,000
Gross Axle—Front (GAWR)	8,000	8,500	8,500	8,500
Gross Axle—Rear (GAWR)	14,500	15,000	15,000	15,000
Dry (UVW)	18,320	19,680	20,030	20,190
Gross Combined (GCWR)	26,000	26,000	26,000	26,000
Net Carrying Capacity	3,680	2,320	1,970	1,810
Measurements				
Wheel Base	208"	228"	242"	242"
Exterior Length (w/o ladder)	33'1"	37'	37'	37'
Exterior Height (w/A/C)	12'	12'	12'	12'
Exterior Width	99"	99"	99"	99"
Interior Width	96"	96"	96"	96"
Interior Height	80"	80"	80"	80"
Awning Size	16'	18'	16'	16'
Tank Capacities				
Fuel (Gallons)	75	75	75	75
LPG (Pounds)	100	100	100	100
Fresh Water (Gallons)	75	75	60	60
Waste Water (Gallons)	55	48	48	48
Gray Water (Gallons)	56	49	49	49
Water Heater (Gallons)	10	10	10	10
Furnace BTUs	35,000	35,000	35,000	35,000

VEHICLE LOADING: Every effort has been made to provide the greatest number of options for the recreational vehicle owner. Along with these choices comes the responsibility to manage the loads that are imposed by the choices so that they remain within the manufacturer's specified chassis weight limits. Do not overload the recreational vehicle.

DRY WEIGHTS: Based on standard features; optional equipment not included. Net carrying capacity (NCC) determined by subtracting unloaded vehicle weight (UVW) from gross vehicle weight, (GVWR) and includes fluids, options, and cargo. Liquid capacities and weights are approximations only.

WARNING: This information is intended as a guide only. Weights of individual vehicles may vary. Consult your owner's manual for complete loading, weighing, and towing instructions.

IMPORTANT: Towing capacity may vary by chassis model, floor-plan, options and loading of the vehicle. This may result in a towing capacity which is less than the maximum capacity of the hitch. Do not exceed the vehicle's Gross Combined weight rating (GCWR), or the hitch rating. A separate functioning brake system is required for any towed vehicle or trailer weighing more than 1,000 lbs. (450 KG) when fully loaded.

WARRANTY...The Industry's Best Warranty—By Far!

We're so confident in the design and construction of our products that they are covered by Thor's exclusive Full Two-Year Limited Warranty* "bumper-to-bumper" coverage to protect your RV investment. The best protection in the RV industry—by far!

*For complete information see the warranty provided with your vehicle.

UltraLeather™ is a registered trademark of UltraFabrics, LLC.



This brochure is printed on recycled paper as part of Thor's corporate effort to minimize waste and conserve our natural resources. Providing safe, fuel-efficient recreational vehicles is Thor's way of further demonstrating our role as the industry leader in safeguarding our nation's environment.

Product information, specifications, and photography in this brochure were as accurate as possible at time of printing. Photographs may contain some features that are optional on your vehicle. Since we continually strive to improve our products, actual products may differ. Prices and specifications are subject to change without notice. All capacities are approximate and dimensions are nominal. Some features or options may be different or unavailable in Canada.



P.O. Box 1486 • Elkhart, Indiana 46515-1486

Phone: 574-266-1111 • Fax: 574-294-8971 • www.fourwinds-rv.com



© 2003 Four Winds International Litho USA 1103-35M