

From sea to shining sea.  
You've sung it, now see it.



2007  
**EXPEDITION**  
CLASS A DIESEL



Trusted Brand | Upscale Décor | 300 HP Diesel Engine | Power Platform Construction | Spacious Living

# TOUR THE COUNTRY. RELAX AT HOME. ALL AT THE SAME TIME.

While the countryside offers lovely surroundings, the Expedition gives Mother Nature some serious competition. The upscale décor showcases a contemporary, polished style, and there's plenty of room to enjoy it, with 7-foot ceilings, a full-wall slide-out, and triple and quad slide-outs too.



Expedition 38N shown in Silver Leaf interior décor with Summit Ash wood finish.





**THE WRAP-AROUND DASH** features large, easy-to-read gauges and easy-to-reach controls. An AM/FM radio with a CD player and SIRIUS® satellite radio entertains your ears.



**THE KEYLESS REMOTE** (optional) locks and unlocks your Expedition with the push of a button. No more fumbling for keys.



**THE PASSENGER'S SEAT** is covered in Ultraleather® for comfort and beauty. Electric foot rest and power adjustments are optional, allowing you to customize the position and height of the chair.



**THE ENTERTAINMENT SYSTEM** sports a 26" LCD TV and a 5.1 Dolby® home theater system with surround sound and DVD player. Boredom takes a holiday!



**THE REAR VIEW CAMERA** has a changeable angle that comes in handy whether you're hooking up a tow vehicle, backing up, or watching traffic on the road behind you. See it all on the hidden flip-out color monitor on the dashboard.





**OVERHEAD STORAGE** provides ample space to keep those things you can't live without, but might not use every day.



**UNDER-THE-SINK STORAGE** holds everything you need to keep your kitchen tidy. There's even a space specially designed to store your sink and range covers when you're not using them.



**THE PANTRY** keeps your snacks nice and neat, easy to see, ready to eat.



**THE DINETTE** has ample elbow room for four to play a spirited game of cards. Just be careful nobody is cheating while you're gazing out that great big picture window.



**PULL-OUT GALLEY EXTENSION** (standard on select models) rolls out to give you even more countertop space, and locks into place during transit. Think of it as a slide-out for your galley!



**FULL-EXTENSION DRAWERS** pull out all the way, so you can store things in the very back of the drawer.



**CENTRAL VACUUM** (optional) makes dust and dirt disappear off your floor – without pushing a heavy vacuum around. And the bag is in an exterior compartment, so all the dirt stays outside.

# THE GORGEOUS GALLEY IS FOOD FOR THE SOUL.

Your elegantly designed galley features all the latest appliances, along with a view of the natural beauty outdoors. It features a 3-burner stove, convection microwave, double bowl sink, and a big 12 cu. foot Norcold® refrigerator. An oven is also available.



**THE GALLEY** features deluxe solid surface countertops – and with the matching sink and range covers, you have more space for party trays.



# DECORATED FOR TRANQUILITY. CREATED FOR COMFORT.

With all this beauty and convenience, it's easy to relax. The Restonic® innerspring mattress provides acres of sleeping area, while the extra space provided by the slide-out lets you really stretch out in the bedroom. Sweet dreams.



**THE BED** is topped with an elegant bedspread and coordinated pillow shams.





**THE BATHROOM** makes you feel right at home, with a large sink with solid-surface countertop and a full-size medicine cabinet with vanity lights.



**THE BEDROOM DRESSER** has a long solid surface top that's the perfect place for her jewelry box. And she can shop for more jewelry with the 20" LCD TV overhead tuned to the shopping channel.



**THE BEDSIDE REMOTE CONTROL** allows you to customize the firmness on each side of the mattress independently with the optional Select Comfort® Sleep Number Air Mattress.



**THE MIRRORED WARDROBE** gives you plenty of cedar-lined space, with handy wire shelving to hang your clothes, and a tall mirror to see how they hang on you.



**THE WASHER/DRYER** (optional) lets you spin your clothes clean and dry while you roll down the road.



**PULL-OUT BASKETS** are a handy place to keep things like extra towels, socks and such.

# INSIDE THIS COOL EXTERIOR LIES A MIGHTY 300 HORSEPOWER ENGINE JUST WAITING FOR YOUR FOOT.

Go ahead, put the pedal to the metal. You'll feel the 300 horsepower Caterpillar® diesel engine kick in, with 860 foot pounds of torque for climbing hills and towing heavy loads. Along with this power, you'll enjoy better suspension and a smoother ride than a gas engine-powered coach.

**AWNINGS** for the patio and entry door provide a covered spot to sit and chat, come rain or shine. (Electric awnings optional.)

**DUAL AIR CONDITIONING UNITS** are mounted on top to improve cooling and create more room for storage below.

**ILLUMINATED ENTRY HANDLE** glows from within, so you can get a grip when it gets dark.



**STYLISH FIBERGLASS FRONT CAP** adds a nice finishing touch to the Expedition's profile.

**STYLISH HEATED MIRRORS** look cool, but stay warm to prevent dew or frost build-up.



**FULL-BODY PAINT** covers the coach to ensure maximum durability and easy upkeep. And a clear mask is available for the front cap that adds further protection from rocks and gravel.

**4-POINT AUTOMATIC LEVELING SYSTEM** levels your coach at the push of a button.

**HIGH MOUNTED TAILLIGHTS** are easy to see, even over towed vehicles.

Vehicle shown in Silver Leaf with full-body paint.

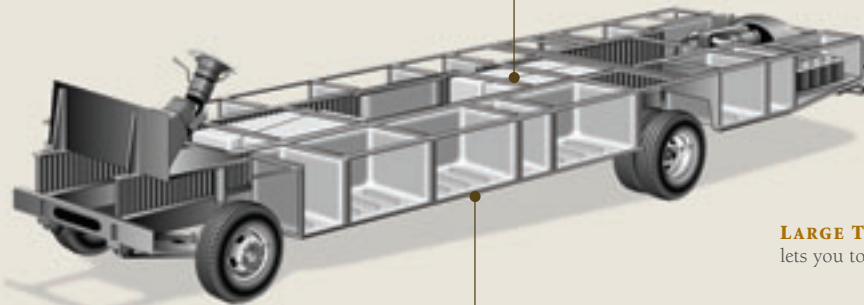


# TALK ABOUT INNER STRENGTH. THAT'S OUR POWER PLATFORM.

Fleetwood's patented Power Platform is as strong as they come. It begins with two 10-inch steel I-beams welded to the chassis. Together with the steel outriggers, they create a basement for the fluid tanks and storage, while supporting the floor, walls and roof with a rigid steel frame.

**HOLDING TANKS** are enclosed between the upper and lower basement floors so they can be heated in cold weather to help prevent freezing.

**VEHICLE STABILITY** is enhanced because the holding tanks are positioned in the bottom center of the platform.



**LARGE TOWING CAPACITY†** lets you tow most vehicles with ease.

†The chassis manufacturer recommends the installation of a supplemental brake control system to activate the brakes on the vehicle or trailer you are towing. Hitch receiver ratings expressed are maximum for the hitch receiver installed and may require the purchase of additional equipment that is dependent on the weight of the towed load. Consult with hitch receiver manufacturer for further information. Drawings are for illustrative purposes only to highlight aspects of motor home construction. Actual motor home design depends on model and is subject to change.

**BASEMENT STORAGE** features aluminum doors, constructed of heavy-duty molded polyethylene so you can hose the compartments out. They are also individually lit for after sunset.



**INTERLOCKING CEILING-TO-SIDEWALL EXTRUSIONS** help keep the box square. This assures a proper cabinet fit.



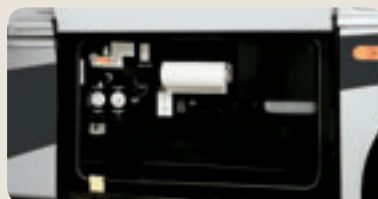
**INTERLOCKING FLOOR-TO-SIDEWALL CONNECTION** locks tightly to keep out water, dust, and noise, and helps eliminate squeaks and rattling.



**VACU-BOND® SIDEWALL CONSTRUCTION** creates a strong, weather-resistant structure. All sidewalls, floors and ceilings are Vacu-bonded to a durable aluminum or steel frame.



**EXTERIOR ENTERTAINMENT CENTER** (optional) lets you enjoy fresh air and your favorite shows. Includes a 20" TV on a swivel tray, an AM/FM radio with CD/DVD/MP3 player and cabinet.



**THE UTILITY COMPARTMENT** provides one central place to empty your holding tanks, flush the black tank, and even hose off your dog. After sunset, you'll appreciate the compartment lighting.



**THE EZ STORE COMPARTMENT** makes it EZ 4U to store long and large gear without having to stoop under the slide-out, and the wide door stays open with gas-lift strut supports.



**PULL-OUT STORAGE BASKET** (select models) keeps small items from scattering about in transit. Tennis, anyone?



**REAR CAP** features a two-piece ladder, so you can make it up to the roof and back.

# WE COVERED OUR CANVAS WITH PAINT.

Expedition has been carefully painted with DuPont® paint in a meticulous two-step process. That not only protects the coach, but it also makes Expedition one of the best-looking coaches on the road.

**SILVER LEAF**



**RATTAN**



**PATINA**





# WHY FLEETWOOD?



## PASSION

We're truly passionate about the RV lifestyle. Fleetwood was founded by RV enthusiasts, and that tradition continues today.



## QUALITY

There's no cutting corners. Skilled craftsmen build every Fleetwood RV for maximum durability and longevity.



## SERVICE

Help is nearby. When you need an upgrade or repair, you'll find facilities all across North America and more than 1,100 dealers ready to assist you.



## WARRANTY

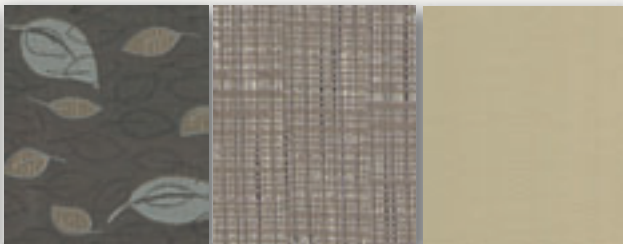
Breathe easier with RV Ownercare, one of the best warranties in the industry. See your Fleetwood dealer for details.



## TRUST

More people trust Fleetwood. After all, we've spent over 50 years perfecting RVs, earning the loyalty of generations of RVers.

### LIVING/DINING ROOM



Sofa

Love Seat, Recliner, Dinette Cushions

Driver & Front Passenger Seats, Optional on Sofa, Love Seat & Recliner

### BEDROOM

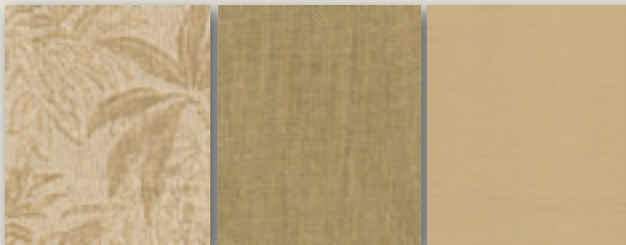


Bedsread & Headboard

Pillow Shams

Throw Pillows

### LIVING/DINING ROOM

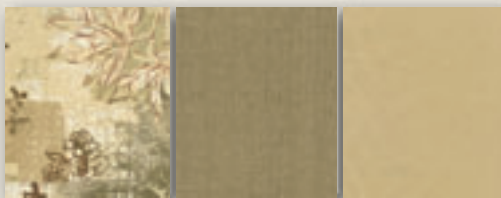


Sofa & Dinette Cushions

Love Seat, Recliner, Throw Pillows

Driver & Front Passenger Seats, Optional on Sofa, Love Seat & Recliner

### BEDROOM

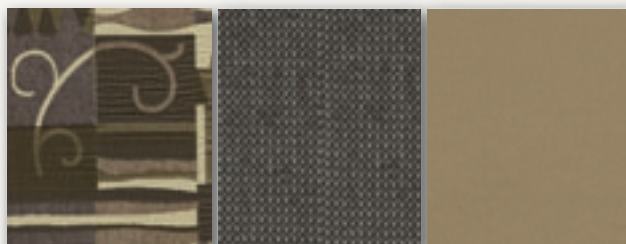


Bedsread & Headboard

Pillow Shams

Throw Pillows

### LIVING/DINING ROOM



Sofa & Dinette Cushions

Love Seat, Recliner, Throw Pillows

Driver & Front Passenger Seats, Optional on Sofa, Love Seat & Recliner

### BEDROOM



Bedsread & Throw Pillows

Pillow Shams

Headboard

### INTERIOR WOOD FINISHES



SUMMIT ASH



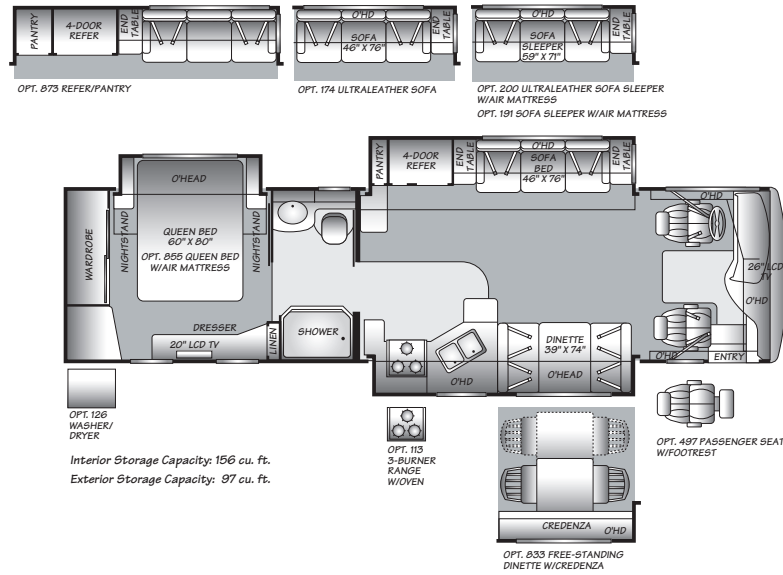
PLANTATION CHERRY



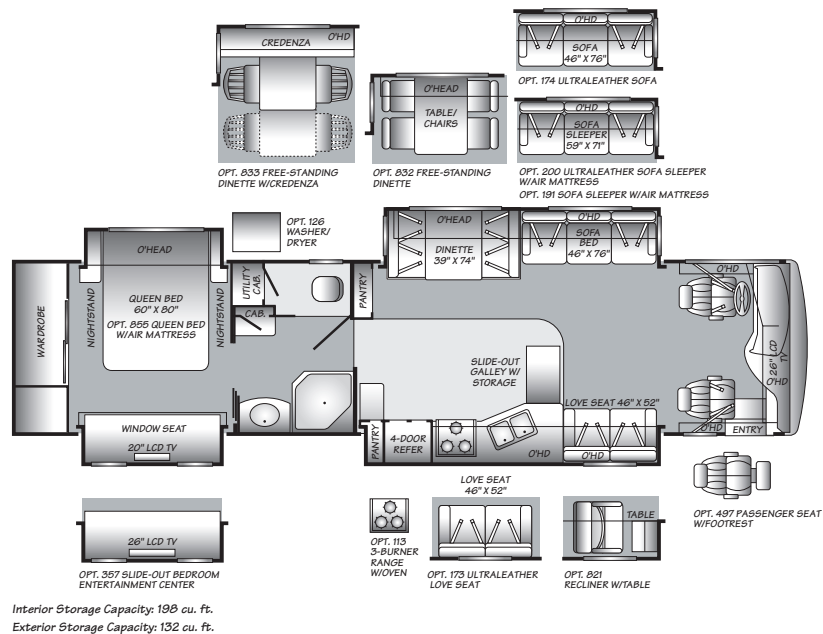
# EXPLORE OUR BIG COUNTRY IN ROOMY QUARTERS.

One of Expedition's greatest features is the spacious feeling it delivers. That's because we used large windows to let light and air in, and tall 7-foot ceilings provide plenty of head room. And of course, the floor plans include triple or quad slide-outs, and a full-wall slide-out where the entire driver's side wall moves out. Because you need room to roam inside the coach, too.

## 34H Triple Slide-Out



## 38L Quad Slide-Out







# Standard Features & Options

## INTERIOR

### INTERIOR – THROUGHOUT

- 10-Gallon Quick-Recovery Water Heater w/Direct Spark Ignition (Gas/Electric) S
- 20,000/25,000 BTU Dual Furnaces S
- **84" Interior Ceiling Height** S
- Ceiling-Ducted Roof A/C S
- Brushed Nickel Cabinet Hardware S
- Crown Molding S
- Day/Night Pleated Shades S
- Deluxe Roller Bearing, Full Extension Drawer Guides & Transit-Ship Locks S
- Demand Water Pump w/Filter S
- **Dual Roof-Mounted A/C High Efficiency w/Solar Panel & Chill Grille on Front A/C** S
- Hardwood Cabinet Doors/Drawers S
- Large Overhead Cabinets w/Raised-Panel Doors S
- Plush Wall-to-Wall Carpet w/Carpet Pad S
- Radius Corner Cabinetry S
- Solar Battery Charger S
- Solid Surface Countertops (Lavy & Galley) S
- Vinyl Flooring at Entry S
- Wall Switches (Includes Switches for Ceiling Lights & Vents) S
- Water Heater Bypass S
- **Whole Coach Water Filtration System** S
- Window Coverings S
- Wood-Finish Return Air Intake for Furnace S
- Woven Jacquard Feature Fabrics S
- Washer/Dryer O
- Water Heater 16 Gallon Output O

### DRIVER CONVENIENCE

- Adjustable 3-Point Seat Belts at Driver & Front Passenger Seats S
- AM/FM Radio w/CD, Satellite & Color Back up Monitor S
- **Auto A/C Heater Combo** S
- Auxiliary Start Circuit S
- Battery Shut-Off Switch S
- CB Radio Ready S
- Cruise Control S
- Dash Fans S
- **Driver/Front Passenger Ultraleather™ Captain's Chairs w/Reclining Back/Slide Controls w/Power Driver Seat** S
- Multi-Function Sun Visor S
- Passenger Armrest w/Integrated Magazine Rack S
- Radio Switch-Main/Auxiliary Power S
- **Soft-Surface Automotive Dash w/Snack Tray & Convenient Service Door** S
- Tilt/Telescoping Steering Wheel S
- Power Driver/Front Passenger Sun Visors O
- Ultraleather™ Driver & Passenger Seats, Power Driver Seat, Power Passenger Seat w/Power Foot Rest O

### GALLEY

- 22" 3-Burner, High-Output Cooktop S
- Cabinet Toe Kicks S
- Convection Microwave Oven S
- Fan-Tastic™ Power Roof Vent w/ Wall Switch S
- Large, Porcelain Double Sink S
- Norcold® 12 cu. ft. Refrigerator S
- Roll-Out Countertop (38N, 38L) S
- Single-Lever Faucet w/ Pull Out Sprayer S
- Soap Dispenser S
- **Solid Surface Countertop, Sink & Range Covers, Mirror Backsplash in Galley** S
- **Under Galley Shelving & Wastebasket** S
- Vinyl Flooring S
- Window Over Sink S
- 22" 3-Burner, High-Output Range w/Oven O
- Free Standing Table & Chairs O

## LIVING ROOM

- 26" LCD TV in Front Overhead S
- Beveled Decor Mirrors S
- Flexsteel™ Residential Seat Styling S
- Home Theater Sound System S
- Satellite Dish Ready S
- Telephone Jack S
- TV Antenna S
- Video Switch Box S
- Ultraleather J-Lounge™ (38S) O
- Ultraleather Love Seat™ (38L, 38N & 38V) O
- Ultraleather™ Sofa O
- Free-Standing Swivel Recliner (38V) O
- Recliner w/Table (38L & 38N) O
- Sofa Sleeper w/Air Mattress (34H, 38L, 38N, 38S & 38V) O

## BEDROOM

- 20" LCD TV S
- Bedspread w/Decor Pillows S
- Innerspring Mattress S
- Rear Speakers S
- Remote Generator Start S
- Second Phone Jack S
- **Ventilated Rear Wardrobe w/Cedar Lining, Carpeted Floor & Wire Organizer** S
- Select Comfort Air Mattress O

## BATHROOM

- A/C Venting S
- Assist Handle S
- Brushed Chrome Bath Accessories S
- **Cabinet Toe Kicks** S
- Fan-Tastic™ Power Roof Vent w/Wall Switch S
- Glass Shower w/Skylight and Low Threshold S
- Make-up Lights S
- Porcelain Toilet w/Water Saver S
- Vinyl Flooring S

## SAFETY/CONVENIENCE

- Carbon Monoxide Detector/Alarm S
- Fire Extinguisher S
- Propane Detector/Alarm S
- RV System Monitor Panel S
- Smoke Detector/Alarm S

## EXTERIOR

### EXTERIOR – THROUGHOUT

- 120V/12V AC/DC Converter S
- 120V/12V Wire Raceways S
- **2000 Watt Inverter w/Remote** S
- **4-point Automatic Electric Levelers** S
- 7.5 kW Onan™ Quiet Diesel Generator S
- 50-Amp Service S
- Aerodynamic Bus Styling S
- Awning Rail/Drip Molding (Both Sides) S
- **Choice of Three Colorway Graphics** S
- **Dual Pane Windows w/Screens** S
- Fiberglass Front & Rear Bumpers & Wheel Wells S
- Fiberglass Front/Rear Caps w/High-Mounted Taillights S
- **Full-Body Paint** S
- **Patio & Entry Door Awning** S
- Patio Receptacles S
- Remote/Heated Exterior Rear-View Mirrors S
- Water Pump Switch (Multiple Locations) S
- Window Awning Package O
- Auto-Locating Satellite Dish O
- Heat Pumps O
- CSA (Canadian Specs) Electrical Package Freightliner™ \*\* O

## AUTOMOTIVE

- 10,000-lb. Weight-Distributing Hitch Receiver w/7-pin Electrical Hook-up S
- **300-HP Caterpillar™ Engine w/Rear-Mounted Radiator** S
- Air Suspension S
- **Dual Fuel Fill (One on Each Side)** S
- Fog Lamps S
- **Freightliner™ Chassis** S
- Large Bonded-in Windshield S
- Mud Flaps S
- Rear-Vision Color Adjustable Camera S
- Single Motor Denso™ Windshield Wipers w/Wet Arm S
- Stainless-Steel Wheel Simulators S
- Tire Valve Extenders S
- Underhood Utility Light S
- Halogen Headlamps S
- Electric Awning O
- Front Protective Mask O
- Remote Keyless Entry O

## SAFETY/CONVENIENCE

- 20' Sewer Hose S
- Central Electrical Panel S
- Dual Battery Charge Control S
- Four 6V/Deep-Cycle House Batteries S
- Park Cable Receptacle S
- Porch Light (Doorside) S
- **Power Entry Step** S
- **Radius Entry Door w/Deadbolt Latch (Keyless-Entry Ready)** S
- Roof Ladder S
- Side-Opening, Engine-Access Door S
- Toilet Tank San-T-Flush™ System S
- Utility Compartment w/Exterior Shower S

## STORAGE

- Aluminum Luggage Door Seal Frames S
- Central Utility Compartment S
- Continuous One-Piece Compartment Bulb Seal S
- EZ-Store Compartment on Living Area Slide-Outs S
- Gas-Lift Strut Supports (Two-Stage Under Slide Box) S
- Hidden, Stainless Steel Latch Rods S
- **Insulated Aluminum Luggage Doors w/Single Paddle Metal Latches & Stainless Steel Hinges** S
- Lighted Luggage Compartments S
- Rotomolded Polyethylene Luggage Compartments S
- Spare Tire Compartment (Excludes V Model) (Spare Tire Not Included) S

## BODY STRUCTURE

- Aluminum Interlocking Floor/Wall/Ceiling Framing S
- Heated Water & Holding Tank Compartments S
- Paco™ Beam System S
- **Royal Tuff-Ply Radius Roof w/Ducted A/C** S

## FLEETWOOD ADVANTAGES

- **Complete TuffPEX™ Plumbing System**
- **Energy Management System (EMS) w/Soft Start**
- **Power Platform Construction (Fleetwood Exclusive)**
- **Vacu-Bond™ Upper/Lower Floors**
- **Vacu-Bond Walls™ w/Smooth High-Gloss Exterior Tuff-Coat™ Fiberglass**

Bold Denotes Fleetwood's Key Features.

S = Standard O = Optional

\*\* CSA Standards may require substitution or deletion to achieve conformance.



# Weights & Measurements

## FREIGHTLINER® CHASSIS

MODELS	34H	38L	38N	38S	38V
Engine Displacement (Liters)	7.2	7.2	7.2	7.2	7.2
Wheelbase (Inches)	208"	252"	252"	252"	252"
GVWR (lbs) <sup>1</sup>	31,000	31,000	31,000	31,000	31,000
Front GAWR (lbs) <sup>2</sup>	12,000	12,000	12,000	12,000	12,000
Rear GAWR (lbs) <sup>2</sup>	19,000	19,000	19,000	19,000	19,000
Base Weight (lbs) <sup>3</sup>	22,155	24,000	22,324	22,605	24,000
GCWR (lbs) <sup>4</sup>	41,000	41,000	41,000	41,000	41,000
Hitch Rating Weight (lbs) <sup>†</sup>	10,000	10,000	10,000	10,000	10,000
Tongue Weight (lbs) <sup>†</sup>	1,000	1,000	1,000	1,000	1,000
Fuel Capacity (gal)	90	90	90	90	90

## DIMENSIONS & CAPACITIES

MODELS	34H	38L	38N	38S	38V
Overall Length <sup>5</sup>	34' 8"	38' 4"	38' 4"	38' 4"	38' 4"
Overall Height (with A/C)	12' 10"	12' 10"	12' 10"	12' 10"	12' 10"
Overall Width (maximum) <sup>6,7</sup>	102"	102"	102"	102"	102"
Interior Height (maximum)	84"	84"	84"	84"	84"
Interior Width (maximum)	96"	96"	96"	96"	96"
Fresh Water Holding Tank (gal)	86	86	86	86	86
Grey Water Holding Tank (gal)	50	50	50	50	50
Black Water Holding Tank (gal)	50	50	50	50	50
Appliance Propane Tank (gal) (WC) <sup>8</sup>	25	25	25	25	25
Water Heater Tank (gal)	10	10	10	10	10

**Liquid Weight Reference:** Water (gal) = (8.3 lbs/3.8kgs) Fuel (gal) = (7.1 lbs/3.2 kgs) Propane (gal) = (4.2 lbs/1.9 kgs)

**Metric Conversion:** Multiply pounds x 0.453 to obtain kilograms. Multiply gallons x 3.785 to obtain liters. Multiply liters x 61 to obtain cubic inches.

## CHASSIS

**Model:** Freightliner® XC-Series

**Engine:** Cat® C7 300 HP

**Torque:** 860 lb-ft @ 1440 RPM

**Alternator Amps:** 170 Amp Leece Neville®

**Transmission:** Allison® 3000 MH, 6-Speed w/Electronic Shifter

- GVWR (Gross Vehicle Weight Rating) is the maximum permissible weight of this fully loaded motor home. The GVWR is equal to or greater than the sum of the (UVW) unloaded vehicle weight plus the (CCC) cargo carrying capacity\*.
- GAWR (Gross Axle Weight Rating) is the maximum permissible loaded weight a specific axle is designed to carry.
- Base Weight is the estimated weight of the motor home without fuel, options, water, cargo or passengers.
- GCWR (Gross Combined Weight Rating) is the value specified by the motor home manufacturer as the maximum allowable loaded weight of this motor home with its towed vehicle. Towing and braking capacities may be different. Refer to Fleetwood and chassis manufacturer's manuals for complete information.
- Length taken from front bumper to rear bumper (excludes accessories).
- Excludes safety equipment and awnings.
- Motor homes feature a body-width over 96" which will restrict your access to certain roads. Before purchasing, you should research any state and/or province road laws which may affect your usage.
- Tank manufacturer's listed water capacity (WC). Actual propane capacity is 80% of water listing as required by the safety code.

† The chassis manufacturer recommends the installation of a supplemental brake control system to activate the brakes on the vehicle or trailer you are towing. Hitch receiver ratings expressed are maximum for the hitch receiver installed and may require the purchase of additional equipment that is dependent on the weight of the towed load. Consult with hitch receiver manufacturer for further information.

N/A = Not available at time of printing.

\*UVW and CCC are found on the cargo carrying capacity label in each RV.

**IMPORTANT— PLEASE READ:** Product information, photography and illustrations included in this publication were as accurate as possible at the time of printing. For further product information and changes, please visit our website at [www.fleetwoodrv.com](http://www.fleetwoodrv.com) or contact your local Fleetwood dealer. Prices, materials, design and specifications are subject to change without notice. All weights, fuel, liquid capacities and dimensions are approximate. Fleetwood has designed its recreational vehicles to provide a variety of uses for its customers. Each vehicle features optimal seating, sleeping, storage and fluid capacities. The user is responsible for selecting the proper combination of loads (i.e. occupants, equipment, fluids, cargo, etc.) to ensure that the vehicle's capacities are not exceeded.

# EXPEDITION<sup>®</sup>

## RV OWNERCARE\*

Limited one-year/15,000-mile coach warranty and three-year/50,000-mile structural warranty, whichever occurs first, and it is fully transferable for the first 12 months. RV OWNERCARE is one of the RV industry's most comprehensive programs and includes systems, appliances, components and construction, with no deductible and no service charge. RV OWNERCARE coverage is provided from a company that will be around in the future to service your needs. See your nearest Fleetwood dealer for a full explanation of benefits and restrictions.

## CONTACT US

To locate a dealer near you, visit our website at [www.fleetwoodrv.com](http://www.fleetwoodrv.com) or call 1-800-444-4905. We can also be contacted at Fleetwood Customer Relations, P.O. Box 1007, Decatur, IN 46733.

## FLEETWOOD TRAVELCADE CLUB

As a Fleetwood owner, you're eligible to become a member of the Fleetwood Travelcade Club. It's a perfect way to meet other Fleetwood owners who love to travel across America and share in the RV lifestyle. Call (877) 577-2560, or visit our website at [www.fleetwoodrv.com/owners\\_clubs](http://www.fleetwoodrv.com/owners_clubs) to learn more, and join the fun!

## IMPORTANT—PLEASE READ

Product information, photography and illustrations included in this publication were as accurate as possible at the time of printing. For further product information and changes, please visit our website at [www.fleetwoodrv.com](http://www.fleetwoodrv.com) or contact your local Fleetwood dealer. Prices, materials, design and specifications are subject to change without notice. All weights, fuel, liquid capacities and dimensions are approximate. Fleetwood has designed its recreational vehicles to provide a variety of uses for customers. Each vehicle features optimal seating, sleeping, storage and fluid capacities. The user is responsible for selecting the proper combination of loads (i.e. occupants, equipment, fluids, cargo, etc.) to ensure that the vehicle's capacities are not exceeded.

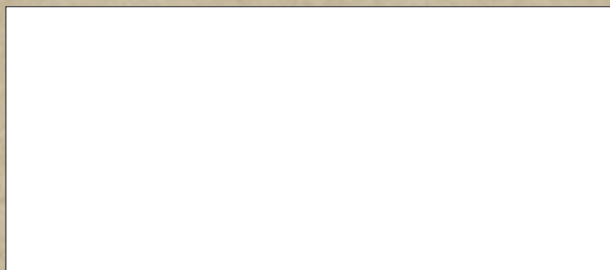


treadlightly!<sup>®</sup>

LEAVING A GOOD IMPRESSION



## YOUR LOCAL FLEETWOOD DEALER IS:



\*For complete info see your Fleetwood dealer.

©2006. Fleetwood Enterprises, Inc.  
Printed in the USA. Inventory Control Number EX07B2, 11/06.  
Model Year 2007, Second Edition.

 **FLEETWOOD**  
*Driven to Explore*