

Elite Spas

www.elitespas.com

© MAA Spas Industries Corp. 2013 All rights reserved.
DURAMAAX, ELITE SPAS and ELITE SPAS & DESIGN are registered trademarks of MAA Spas Industries Corp.
COROMAAX, BLUEMAAX, CLEARMAAX, AEROMAAX and "Because you deserve more" are trademarks of MAA Spas Industries Corp.
MAAX is a registered trademark of MAA Spas Canada Inc.
Specifications subject to change without notice.
Dimensions are approximate. Models are not necessarily as they appear.

Elite Spas



In today's world, there are many reasons to own an Elite Spa. Your own private sanctuary far away from the hassles of everyday life, or a relaxing environment to reconnect with family and friends. The massaging action of the jets and gentle warmth of the water will relieve tension and anxiety for a greater sense of inner well-being. Whatever you desire, your new Elite spa is guaranteed to provide years of trouble free enjoyment.

Elite Spas hot tubs have been carefully engineered for long-term durability, efficiency and complete hydrotherapy. Throughout North America, MAAX® Spas brands have earned the trust and confidence of consumers. Rest assured, your new Elite Spas hot tub will be everything you expect – built for maximum durability and years of worry-free operation.



Elite Spas

Hydrotherapy

Heat, buoyancy and massage

Having an Elite Spas hot tub is like having your own personal masseuse. We call it Hydrotherapy. You'll call it heaven, as the days stress is washed away within moments of slipping into the warm soothing waters.



Hydrotherapy Jets



Euro Jet

- Engineered for the entry point of ozone into the spa



Cluster Adjustable Jet

- Engineered for targeting precise pressure points and close groupings.
- Relieves muscle tension and provides a massage that penetrates deep into the muscles



XL Adjustable Massage

- Pulsating massage action
- Relaxes muscle tension and soothes aches and pains



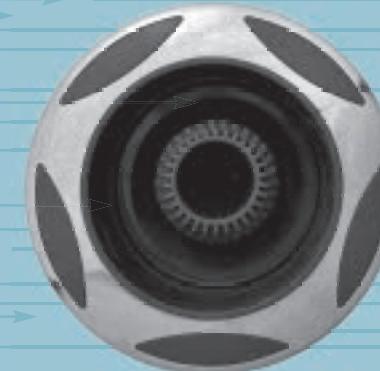
Standard Directional

- Exact size for precision placement
- Ideal massage for small sensitive areas



LS Adjustable Directional

- A powerful and deep massage
- Adjust flow rate with a simple twist



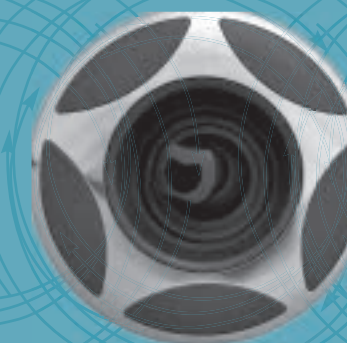
XL Adjustable Directional

- A powerful, vigorous deep muscle massage for larger areas
- High Volume, perfect for tired muscles due to work or play



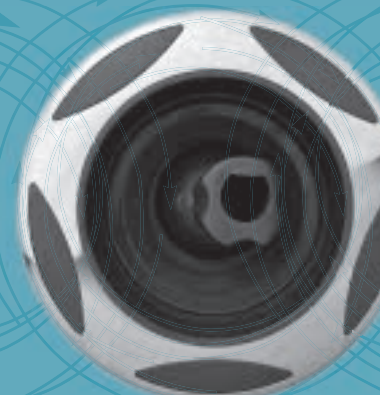
Standard Adjustable Roto

- Swirling motion to avoid over stimulation
- Massages smaller muscle groups



LS Adjustable Roto

- Swirling massage for mid sized muscle groups
- Adjustable for fast or slow kneading action



XL Adjustable Roto

- Swirling massage action for larger areas
- Personal hands on massage feeling



A Complete Spa Experience

Your Elite Spa has been designed to provide a complete spa experience. You will enjoy a variety of healing and relaxing experiences all in the convenience of your home.



Deep Tissue Massage

A deep tissue massage will relieve pain and tension locked deep in the muscles and connective tissue of the body. Additional circulation, promoted by jet stimulation will release tension and promote a healing reaction in injured areas. The deep, soothing streams of jet-propelled water from our QuadraJet System are a great example of just one of the jetting array systems by Elite, designed to loosen muscles and harmonize the body's own healing reaction.

Soft Tissue Massage

In some cases, extremely tired or injured muscles need a softer touch. In this case, supportive seating combined with the direct air injection technology of AeroMAAX is the right choice. AeroMAAX strategically places air injectors throughout the spa. This gentler massage promotes blood flow and "vacillation," the awakening of smaller blood vessels through the body. The effect is mild vibration in the spa, to soothe, refresh and heal.

BackMAAX™

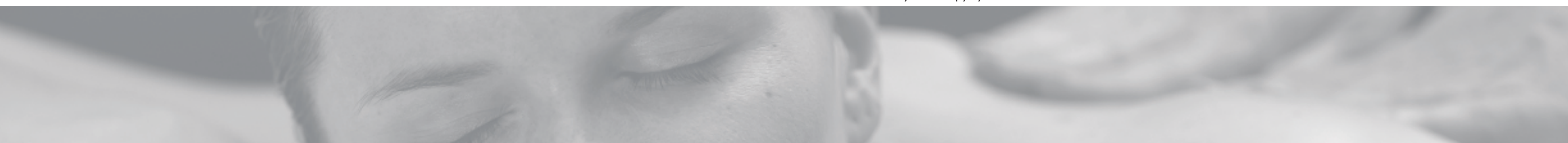
The ultimate massage system, BackMAAX features six jets strategically placed to cover the entire back. Every jet is fully adjustable to customize your massage for the specific task at hand. BackMAAX™ is capable of a pulsing surface massage, or a penetrating, swirling motion to reach deep into your muscles. The BackMAAX seat is extra deep for full-body immersion, and features the most powerful massage of all the Elite hydrotherapy systems.

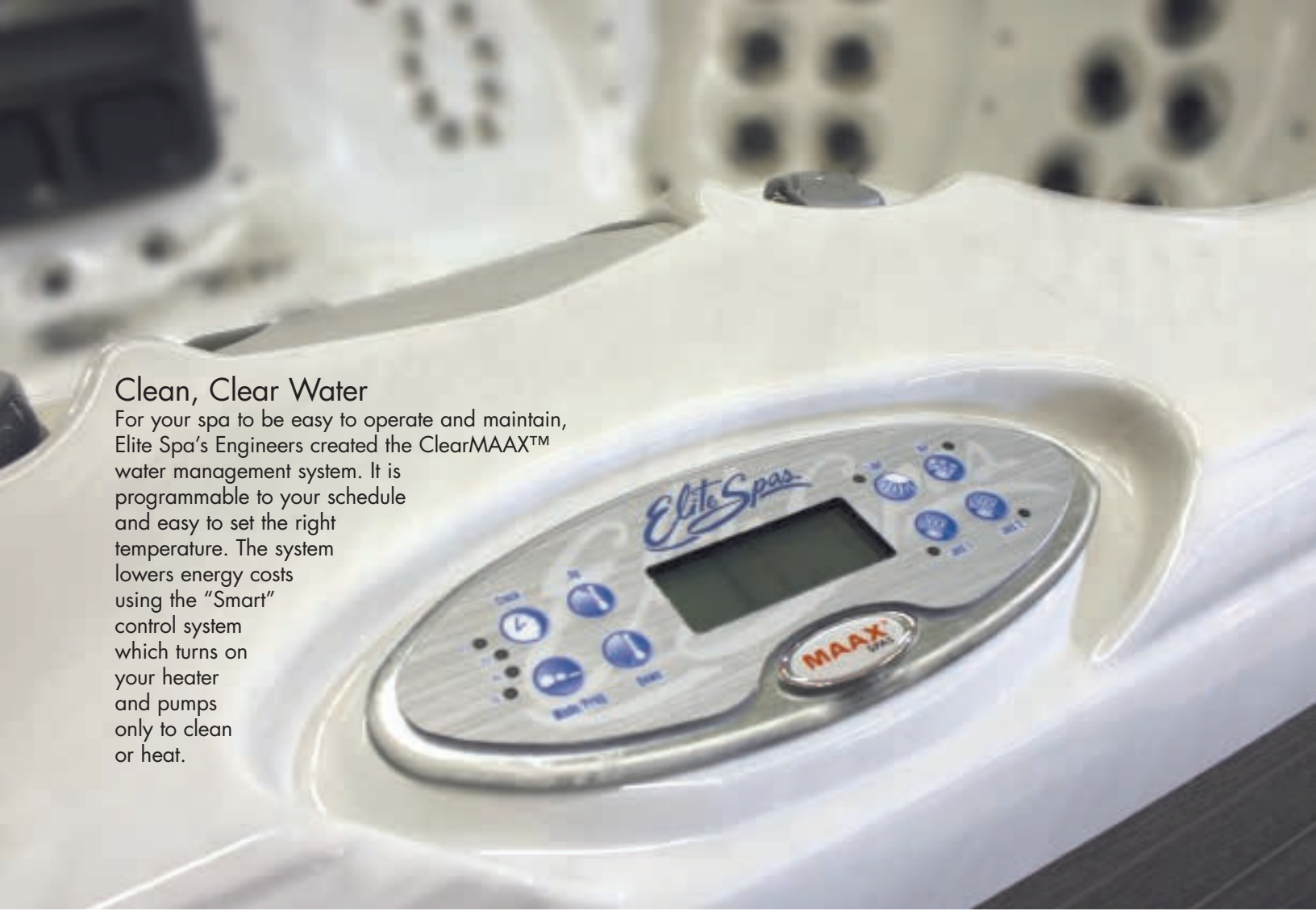
Foot Relief Station

Therapeutic foot massage relaxes the entire body by increasing circulation via points on the foot which correspond to all parts of the body. Strategically positioned and fully adjustable jets have been designed to target the entire foot with streams of stimulating pressure.

Neck Relief Station

Lean back into a unique cushion of comfort for everyone's favorite: a neck and shoulder massage. Tense neck and shoulder muscles are quickly relieved as positioned jets do the work for you, creating absolute bliss.





Clean, Clear Water

For your spa to be easy to operate and maintain, Elite Spa's Engineers created the ClearMAAX™ water management system. It is programmable to your schedule and easy to set the right temperature. The system lowers energy costs using the "Smart" control system which turns on your heater and pumps only to clean or heat.



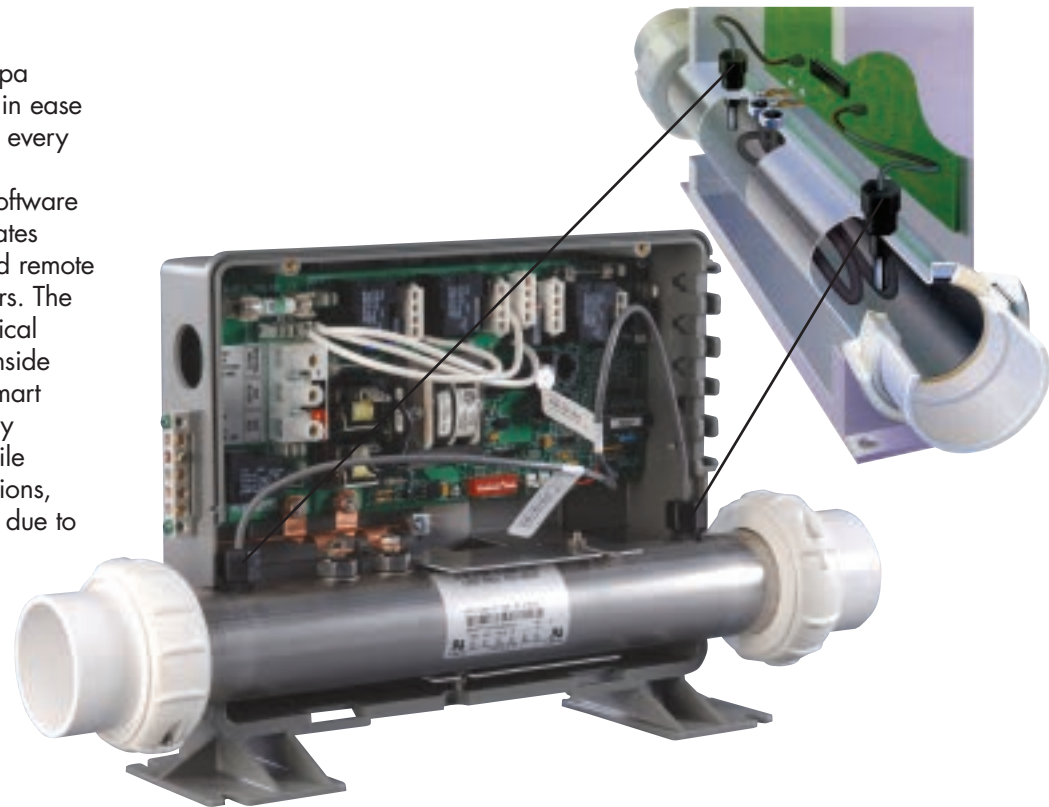
ClearMAAX™

ClearMAAX™ is a high-rate filtration system which efficiently wraps the spa's flowing water around two specially designed filters. The results? Reduced chemical usage and fully cleaned water every 5-6 minutes. Elite Spas exclusive ClearMAAX™ utilizes 100 sq/ft filtration or optional "purification" grade filters in the cleaning process. Balanced turnover of all the spa's water is guaranteed with multiple "child safe" suction. The remarkably clean ClearMAAX™ system maintains a 5-6 minute complete spa turnover rate, regardless of whether you are using a therapy or filtration setting.



M7 Technology

This advanced, state-of-the-art spa controller provides the ultimate in ease of use, safety and reliability for every spa user. M7 technology is a revolutionary new hardware/software platform that completely eliminates mechanical sensor switches and remote through-wall temperature sensors. The M7 platform features two identical solid state sensors that mount inside the heater manifold. These "Smart Sensors" accurately and reliably measure water temperature while monitoring critical water conditions, without the possibility of failure due to mechanical switch malfunction.



56 Frame Pump

30% larger than pumps commonly used by other spa brands, Elite Spas' 56 frame pump has many advantages. The right pump is imperative to nearly all basic functionality of spa operation. Elite Spas isolation mounted pump incorporates four shock absorbers, to absorb vibration and noise. Because of its size, the 56 frame pump has lower amp draw to reduce operating costs. High water flow combined with quiet operation. That's better performance.

Clean Zone II™

The Clean Zone II™ system uses the power of UVC light, the same technology utilized in many communities around the world to purify drinking water. Clean Zone II™ kills 99.9%* of microorganisms, bacteria, viruses and parasites. This system is the perfect blend of hygiene, purity and technology.



Clean Zone™

Clean water is the cornerstone of spa enjoyment. Elite Spas CleanZone™ water purification system will automatically maintain healthy, crystal clear water while greatly reducing chemical maintenance. CleanZone™ is an ultraviolet plasma cell ozone system that disinfects and cleans your spa water. And best of all, CleanZone™ does not require any cleaning or maintenance what so ever. Enjoy clean water throughout the life of your spa.



MAAXimum Energy Efficiency



Your Elite Spa Has Been Engineered For Use All Year Long.

At Elite Spas, we have undergone intensive research and development to bring our customers one of the most energy efficient hot tubs in the industry. Conserving energy reduces monthly utility bills which not only saves money, but also lessens our carbon footprint for a better tomorrow. Today, governmental agencies in many different areas are taking an interest in the energy consumption of hot tubs. In accordance with all enacted North American Laws, every Elite Spas model exceeds the efficiency standards, some by up to 20%.



MAAXimum Energy Conservation

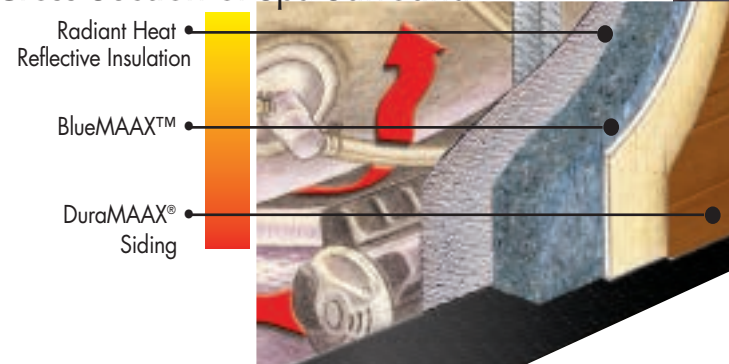
The Elite Spas insulation system "Insulock" ensures energy efficiency. Built like a thermal pane window, air is trapped for sound and heat insulation in addition to warm waters, and quiet operation adds to your total spa enjoyment.



Insulock

Insulock is the ultimate in sound and heat energy management for your hot tub. All four sides, plus the floor are lined with reflective material, combined with BlueMAAX® to create an infrared thermal barrier. Radiant heat energy from the pumps and equipment reflects back to the spa and is absorbed into the plumbing. Energy created by the spa stays in the spa.

Cross Section of Spa Surround



BlueMAAX™

Insulock insulation system features the eco-friendly 'BlueMAAX™' insulation. Made from recycled natural fiber it is approved by the U.S. Green Building Council. The insulation contains no chemical irritants, is treated with a borate-based solution to prevent mold/mildew growth, pest infestation, and acts as a fire retardant. BlueMAAX™ replaces urethane foam commonly used in "foam filled" hot tubs. The "foam filling" process in conventional spas can produce as much as 50 lbs. of volatile organic components (VOC's) which are harmful to the environment. The new energy system also allows for easy service access, and can be taken out and put back together to factory specifications right in your home.

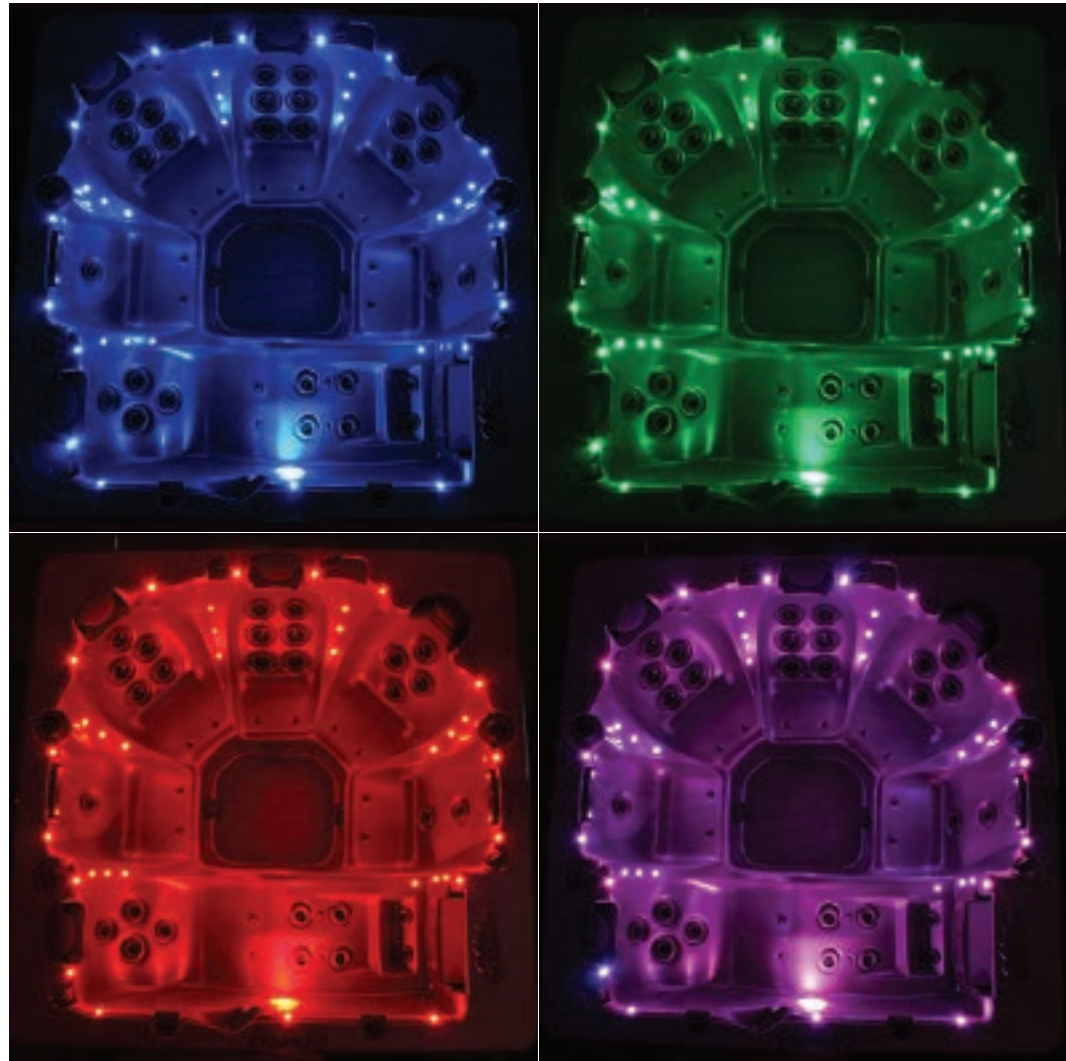


Lifetime insulation warranty on all steel frame products.



Insulating Cover

Elite Spa's deluxe insulating covers have been designed for superior heat and moisture retention. The cover's fit keeps water from evaporating while also maintaining the temperature.



Chromatherapy
 Elite Spas Chromatherapy Lighting is designed to stimulate the therapeutic effects of color combined with hot water. Chromatherapy is produced from an array of 1" LED lights placed strategically between massage stations for optimal effect. Each color can target a specific energy center of the body, promoting balance and healing throughout.



Cascading Water
 Elite Spas' alluring waterfall feature is the ideal compliment to an already perfect setting. Another reason to drift even further - to a place where tension quickly fades away.



Acoustic Enjoyment
 Your favorite play lists and HD/satellite radio are just a touch away with the Sony satellite ready stereo and MP3 USB connection technology.



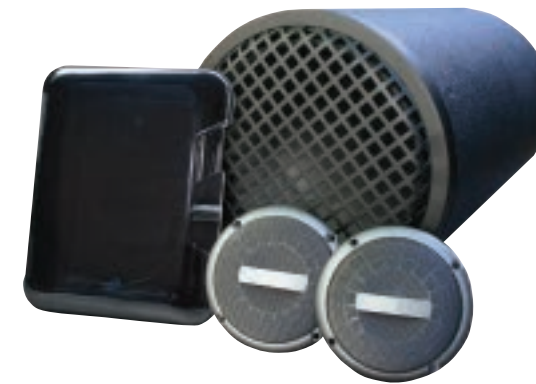
Built-in Subwoofer
 With Elite Spas Sony stereo/CD combination, sound resonates through the water from a subwoofer integrated into the spas substructure, allowing you to not only hear, but also feel your music.



Stereo for 3200 - ES



3000 Stereo System
 Elite Spas 3000 hot tubs utilize an MP3 stereo system with a built in subwoofer.



Stereo for 3000

Speakers
 Perfect for an evening of relaxing or an entire backyard gathering of friends: these innovative marine grade speakers are sure to give you superior sound quality.





3000

Seating:

6 adults

Dimensions:

84" X 84" X 35"
(213 cm X 213 cm X 89 cm)

Water Capacity:

320 US gal/1211 liters

Weight (empty/full):

690 lb/313 kg empty
3255 lb/1475 kg full

Electrical Requirements:

4 wire 240VAC 60Hz 30A/40A

3000 with AeroMAAX:

4 wire 240VAC 60Hz 30A/50A



3400

Seating:

6 adults

Dimensions:

92" X 92" X 35"
(234 cm X 234 cm X 89 cm)

Water Capacity:

400 US gal/1514 liters

Weight (empty/full):

825 lb/374 kg empty
4025 lb/1825 kg full

Electrical Requirements:

3400 Series:

4 Wire 240VAC 60 Hz 30A/50A

3400 with AeroMAAX:

4 Wire 240VAC 60Hz 40A/60A



3200

Seating:

6 adults

Dimensions:

84" X 84" X 35"
(213 cm X 213 cm X 89 cm)

Water Capacity:

320 US gal/1211 liters

Weight (empty/full):

690 lb/313 kg empty
3255 lb/1475 kg full

Electrical Requirements:

4 wire 240VAC 60Hz 30A/50A

3200 with AeroMAAX:

4 wire 240VAC 60Hz 40A/60A



3600

Seating:

6 adults

Dimensions:

88 3/4" X 88 3/4" X 35"
(225 cm X 225 cm X 89 cm)

Water Capacity:

385 US gal/1457 liters

Weight (empty/full):

715 lb/324 kg empty
3795 lb/1721 kg full

Electrical Requirements:

3600 Series:

4 Wire 240VAC 60Hz 30A/50A

3600 with AeroMAAX:

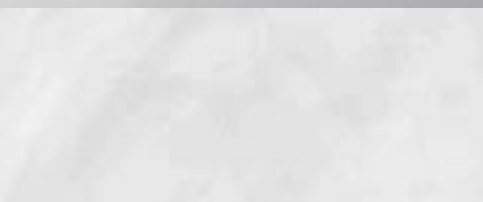
4 Wire 240VAC 60Hz 40A/60A



Desert



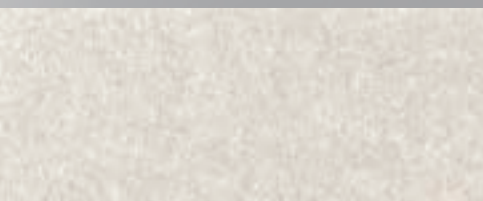
Denim



Silver Marble



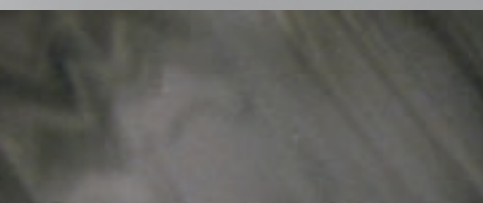
Latte



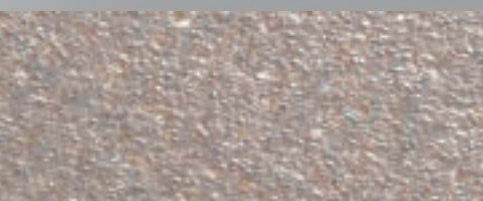
Gypsum



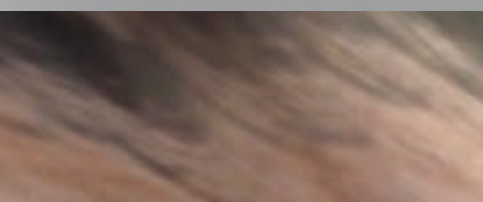
Sahara



Midnight Opal



Linen



Tuscan Sun

Continuous Cast Acrylic

Every Elite Spas® hot tub has an attractive interior finish made from continuous cast acrylic. The hard, non-porous surface resists stains, fading, scratches and chemical abuse. With the look of granite, pearl or metalescence, the extremely tough finish offers beauty and peace of mind. Attractive, versatile and easy to clean - it is sure to match any backyard design

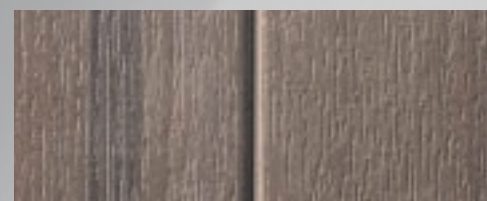


DuraMaax™

Elite Spas' maintenance-free, all-weather DuraMAAX™ cabinetry is a state of the art wood-alternative material that has the look and feel of natural wood. DuraMAAX™ has an incredible wood grain appearance and is offered in teak, grey or mocha, it's the only difficult decision you'll have to make.



Teak



Grey



Mocha

Steel Sub-Structure

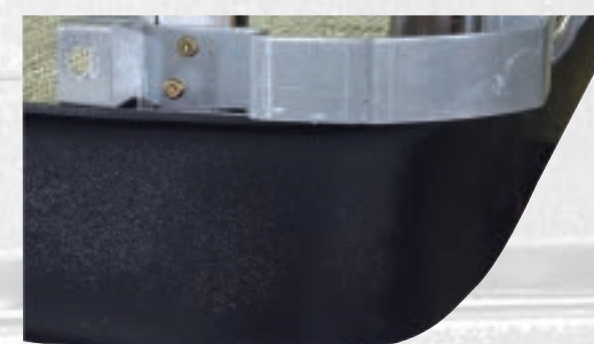
The Elite Spas Steel Sub-Structure is the key feature that sets Elite Spas apart. Engineered to exact tolerances, it allows for complete integration of all the systems of the spa. The lightweight, high strength steel frame will never rot, warp, split or crack. It will never expand or contract with moisture, which over time can damage the spa's exterior. A 250% superior strength to weight ratio over conventional wood frames provides you with a lighter and stronger unit. Plus, with the addition of greater long-term corrosion protection, your sub-structure is weatherproof, requiring zero maintenance.



ELITE Warranty

Steel Sub-Structure - Lifetime
Elite Spas Steel Sub-Structure is covered by a lifetime structural warranty.

- 40% lighter and 250% stronger than traditional wood frames.
- Weatherproof
- Corrosion Free



Bottom Pan

Elite Spas Bottom Pan interlocks with the steel frame, forming a superior foundation for the spa to rest on. The single piece unit locks in heat, seals out moisture and protects the spa from bugs and unwanted pests.



4000



Seating:
3 adults

Dimensions:
66" X 83" X 30.5"
(168 cm X 211 cm X 77cm)

Water Capacity:
195 US gal/740 liters

Weight (empty/full):
510 lb/231 kg empty
2070 lb/939 kg full

Electrical Requirements:
110 Series:
3 wire 120VAC 60Hz 20A/
20 amp GFCI Cord NOT supplied
4000:
4 wire 240VAC 60Hz 30A/40A
4000 with AeroMAAX:
4 wire 240VAC 60Hz 40A/50A



7000



Seating:
6 adults

Dimensions:
83" x 83" x 35"
(211 cm x 211 cm x 89cm)

Water Capacity:
315 US gal/1192 liters

Weight (empty/full):
745 lb/338 kg empty
3265 lb/1481 kg full

Electrical Requirements:
7000:
4 Wire 240VAC 60Hz 40A/50A
7000 with AeroMAAX:
4 Wire 240VAC 60Hz 40A/60A



7500



Seating:
6 - 7 adults

Dimensions:
83" x 83" x 35"
(211 cm x 211 cm x 89cm)

Water Capacity:
310 US gal/1174 liters

Weight (empty/full):
770 lb/349 kg empty
3250 lb/1474 kg full

Electrical Requirements:
7500:
4 Wire 240VAC 60Hz 40A/50A
7500 with AeroMAAX:
4 Wire 240VAC 60Hz 40A/60A



8000



Seating:

6 adults

Dimensions:

92" x 92" x 35"

(234 cm x 234 cm x 89 cm)

Water Capacity:

395 US gal/1495 liters

Weight (empty/full):

860 lb/390 kg empty

4020 lb/1823 kg full

Electrical Requirement:

8000:

4 Wire 240VAC 60Hz 40A/50A

8000 with AeroMAAX:

4 Wire 240VAC 60Hz 40A/60A



8500



Seating:

6 - 7 adults

Dimensions:

92" x 92" x 35"

(234 cm x 234 cm x 89cm)

Water Capacity:

410 US gal/1552 liters

Weight (empty/full):

850 lb/386 kg empty

4130 lb/1873 kg full

Electrical Requirements:

8500:

4 Wire 240VAC 60Hz 40A/50A

8500 with AeroMAAX:

4 Wire 240VAC 60Hz 40A/60A





9000

Seating:

5 adults

Dimensions:

92" x 92" x 35"
(234 cm x 234 cm x 89 cm)

Water Capacity:

370 US gal/1401 liters

Weight (empty/full):

830 lb/377 kg empty
3790 lb/1719 kg full

Electrical Requirements:

9000:
4 Wire 240VAC 60Hz 40A/50A
9000 with AeroMAAX:
4 Wire 240VAC 60Hz 40A/60A



ES

Seating:

6 adults

Dimensions:

92" x 92" x 35"
(234 cm x 234 cm x 89 cm)

Water Capacity:

375 US gal/1420 liters

Weight (empty/full):

1025 lb/465 kg empty
4025 lb/1826 kg full

Electrical Requirements:

4 Wire 240VAC 60 Hz
40A/60 amp GFCI/#6 wire

Features	3000	3200	3400	3600	4000	7000	7500	8000	8500	9000	Elite ES
Steel Sub-Structure	wood frame	wood frame	wood frame	wood frame	•	•	•	•	•	•	•
DuraMAAX® Cabinetry	•	•	•	•	•	•	•	•	•	•	•
Molded Pillows	•	•	•	•	•	•	•	•	•	•	•
Molded Pan Bottom	CoroMAAX	CoroMAAX	CoroMAAX	CoroMAAX	•	•	•	•	•	•	•
Insulock Insulation System	•	•	•	•	•	•	•	•	•	•	•
Freeze/Overheat Protection System	•	•	•	•	•	•	•	•	•	•	•
ClearMAAX® Filtration System (2x50 sqft)	75sq.ft.	75sq.ft.	75sq.ft.	75sq.ft.	•	•	•	•	•	•	•
3.5" Underwater Spa Light	3-1" lights	3-1" lights	3-1" lights	3-1" lights	•	•	•	•	•	•	•
Illuminated Water Feature	•	•	•	•	•	•	•	•	•	•	•
ChromaTherapy						•	•	•	•	•	•
Illuminated Spa Controls						•	•	•	•	•	•
Illuminated Cup Holders						•	•	•	•	•	•
1.5 kW Stainless Steel Heater 120V					•						
5.5 kW Stainless Steel Heater 220V	•	•	•	•	•	•	•	•	•	•	•
Hydrotherapy Systems											
BackMAAX						•	•	•	•	•	•
Neck Relief Station	•	•	•			•	•	•	•	•	•
Foot Relief Station	•	•	•	•	•	•	•	•	•	•	•
Dynamic Jet Sequencer											•
AeroMAAX System		Option	Option	Option	Option	Option	Option	Option	Option	Option	STD
Crossfire Turbo System		Option									
Therapy pump:											
56 Frame 2-speed 5.0 bHP		•	•	•	•	•	•	•	•	•	•
56 Frame 1-speed 5.0 bHP		•	•	•		•	•	•	•	•	•
56 Frame 2-speed 6.0 bHP	•										
Total Hydrotherapy Jets Available:	43	55	56	57	34	55	51	55	51	53	80
Euro Jets	18	20	19	22	1	1	1	1	1	1	15
Standard Jets	14	24	22	18	6	10	8	10	8	8	18
LS Jets			4	6	10	11	9	11	9	17	10
XL Jets					3	17	17	17	17	13	22
Water Features	1	1	1	1		2	2	2	2		1
Air Jets	10	10	10	10	14	14	14	14	14	14	14
Optional Features											
Ozone System	•	•	•	•	•	•	•	•	•	•	STD
Deluxe Insulating Walk-on Cover	•	•	•	•	•	•	•	•	•	•	•
Stainless Steel Jets	•	•	•	•	•	•	•	•	•	•	STD
Sony AM/FM/CD/MP3/Satellite-Ready Stereo <small>MP3 Stereo*</small>		•	•	•		•	•	•	•	•	STD
CleanZone II UV System	•	•	•	•		•	•	•	•	•	•

* Elite Spas 3000 is equipped with MP3 stereos.
The 3200 - ES models are equipped with
Sony Marine Design IPx5 Certified Stereos.

The ES is the pinnacle of worry-free operation, reliability and enjoyment.