

**PUMA 2008**

Travel Trailers, Fifth Wheels, Park Trailers & Toy Haulers

JOIN THE  
**PUMA FAMILY 2008**  
IN THE GREAT OUTDOORS



TRAVEL TRAILERS, FIFTH WHEELS, PARK TRAILERS & TOY HAULERS



## FUN & CAREFREE

When you're on the prowl for adventure, nothing is better suited than a Puma. These powerfully-built, easily towed travel trailers make the adventure fun and carefree.

Puma offers 22 floor plan choices including a variety of kids' bunk room models. Satellite TV hook-up is standard on all models to keep everyone entertained.

COCOA DECOR







26-RLSS SHOWN IN COCOA DECOR



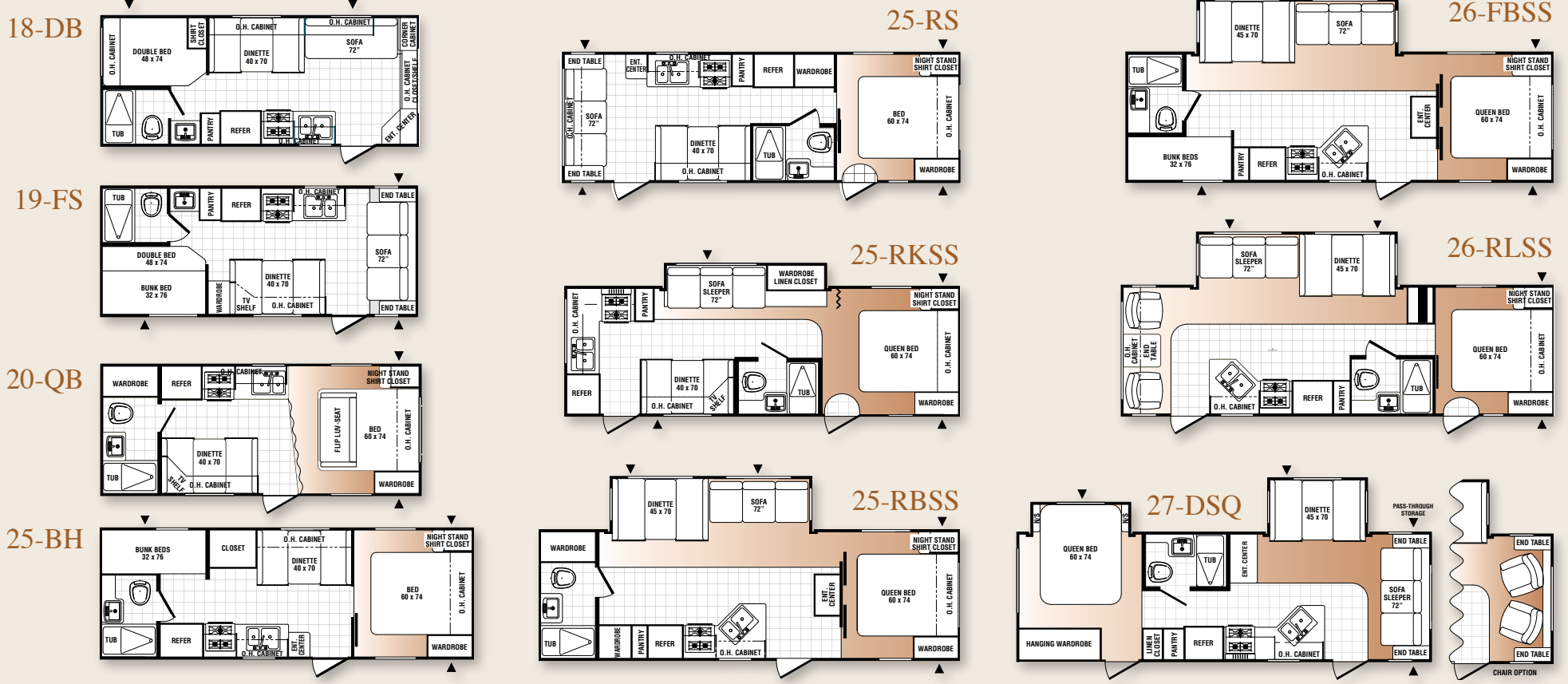


29-RKSS SHOWN IN SAGE DECOR



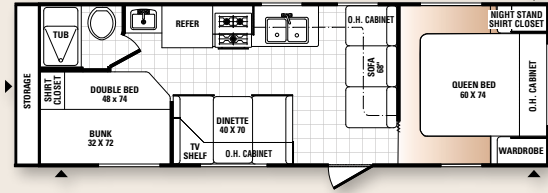
Puma's beautifully designed interiors integrate space, style, and comfort to give you the best of everything – generous living space, convenient features, and lush comforts. An abundance of storage is found throughout enhanced by handsome arch style cabinet doors and solid wood drawers. In the bed and bath area, the residential style shower includes an overhead skylight for natural lighting.



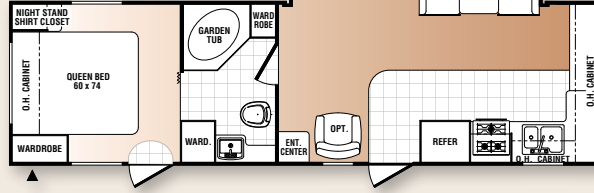


MODELS	18-DB	19-FS	20-QB	25-BH	25-RS	25-RKSS	25-RBSS	26-FBSS	26-RLSS	27-DSQ	27-FQ	27-RLS	28-BHS	29-FKSS	29-FQS	29-RKSS	30-DBSS	30-FQSS
Hitch Dry Weight (lbs.)	527	560	663	660	600	509	615	705	700	952	530	590	640	800	720	830	800	800
Dry Axle Weight (lbs.)	3784	3710	3476	4090	4430	4796	5542	5460	5470	5424	4820	5090	5260	5910	6260	6100	5870	5870
Total Dry Weight (lbs.)	4311	4270	4239	4750	5030	5305	6157	6165	6170	6376	5350	5680	5900	6710	6980	6930	6670	6670
Carrying Capacity (lbs.)	2744	2827	3052	2447	2107	1732	4146	2877	2867	4504	1717	1447	1277	2427	2077	2237	2467	2467
GVWR (lbs.)	7527	7560	7663	7660	7600	7509	10775	9505	9500	11352	7530	7590	7640	9600	9520	9630	9600	9600
Tire Size	14"	14"	14"	14"	14"	14"	15"	15"	15"	15"	15"	15"	15"	15"	15"	15"	15"	15"
Interior Height	80"	80"	80"	80"	80"	80"	80"	80"	80"	80"	80"	80"	80"	80"	80"	80"	80"	80"
Exterior Height w/AC	10'5"	10'5"	10'5"	10'5"	10'5"	10'5"	10'5"	11'1"	11'1"	10'5"	10'5"	11'1"	10'5"	11'1"	11'1"	11'1"	11'1"	11'1"
Exterior Width	98"	98"	98"	98"	98"	98"	98"	98"	98"	98"	98"	98"	98"	98"	98"	98"	98"	98"
Overall Length	23'3"	23'3"	23'3"	27'1"	28'0"	28'2"	29'3"	29'9"	30'2"	29'8"	30'7"	28'3"	32'1"	32'6"	32'8"	33'3"	32'8"	32'8"
Fresh Water Capacity (gal.)	45	45	45	45	45	45	45	45	45	45	45	45	45	45	45	45	45	45
Grey Water Capacity (gal.)	42	42	42	42	42	84	42	84	84	42	42	42	42	84	42	84	42	42
Black Water Capacity (gal.)	42	42	32	32	42	32	32	32	32	42	42	42	42	42	42	32	42	42
Awning Size	14'	10'	16'	16'	19'	18'	21'	16'	21'	16'	21'	20'	20'	21'	19'	21'	18'	18'

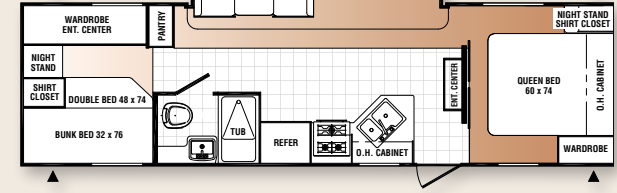
27-FQ



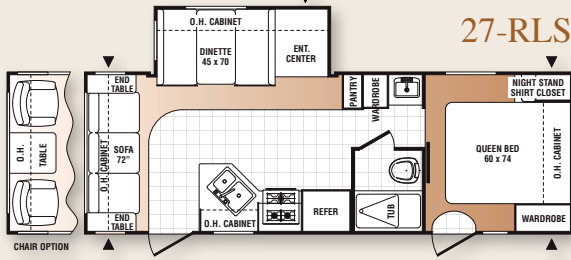
29-FKSS



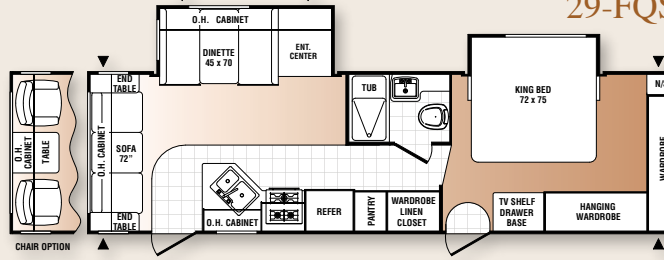
30-FQSS



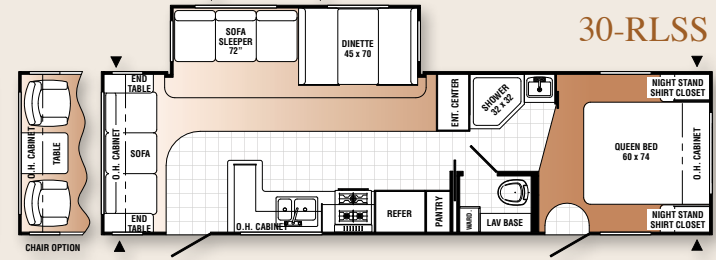
27-RLS



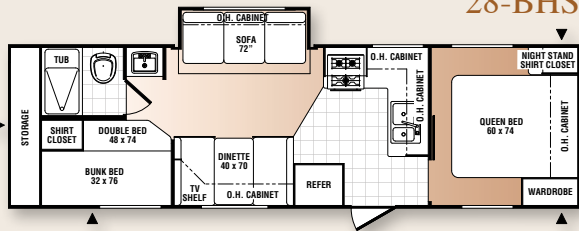
29-FQS



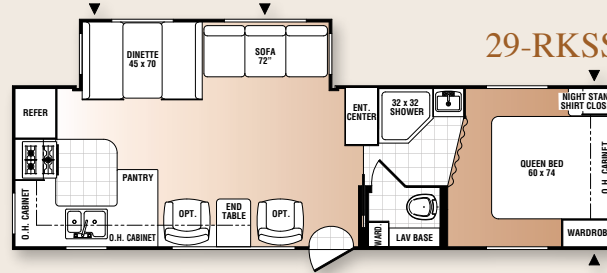
30-RLSS



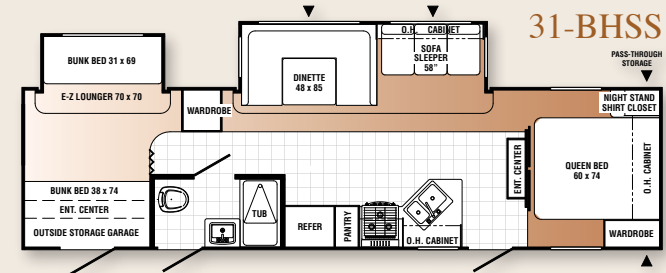
28-BHS



29-RKSS



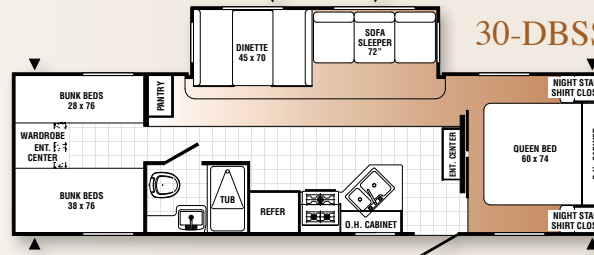
31-BHSS



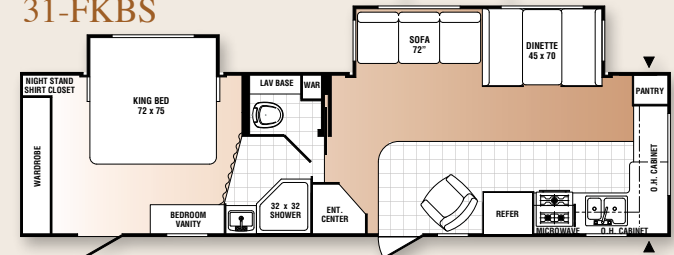
30-RLSS 31-BHSS 31-FKBS 31-DSBH

TBA	890	1020	980
TBA	6812	7064	6000
TBA	7702	8084	6980
TBA	3116	2624	3697
TBA	11290	11180	11140
15"	15"	15"	15"
TBA	80"	80"	80"
TBA	11'1"	11'1"	11'1"
TBA	98"	98"	98"
33'8"	35'4"	35'9"	33'5"
TBA	45	45	45
TBA	42	84	42
TBA	32	32	42
21'	21'	21'	21'

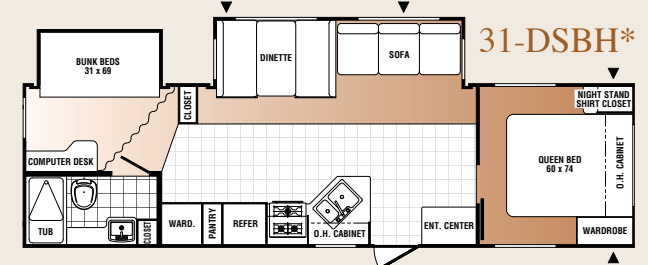
30-DBSS



31-FKBS



31-DSBH\*



\*Available with Residential Options



## ENJOYMENT

Puma offers six fifth wheel floor plans. All models are equipped with a multitude of standard features, plus extra options can be added to tailor your Puma fifth wheel to your needs and lifestyle. Interiors feature residential style kitchens with designer Congoleum® linoleum flooring and optional home theater surround sound systems for your enjoyment.

INDIGO DECOR







245-RKS SHOWN IN INDIGO DECOR



MODELS

245-RKS

253-FBS

259-RBSS

265-RLSS

282-RKSS

295-BHSS

Hitch Dry Weight (lbs.)

1080

1200

TBA

1074

1270

1073

Dry Axle Weight (lbs.)

4960

5460

TBA

5576

5832

6706

Total Dry Weight (lbs.)

6040

6660

TBA

6650

7102

7869

Carrying Capacity (lbs.)

1568

2877

TBA

4112

3856

2892

GVWR (lbs.)

8080

10000

TBA

11234

11430

11233

Tire Size

14"

15"

15"

15"

15"

15"

Interior Height

80"

80"

TBA

80"

80"

80"

Exterior Height w/AC

12'4"

12'2"

TBA

12'4"

12'4"

12'4"

Exterior Width

98"

98"

TBA

98"

98"

98"

Overall Length

25'8"

27'0"

28'4"

27'2"

30'1"

33'7"

Fresh Water Capacity (gal.)

45

45

TBA

45

45

45

Grey Water Capacity (gal.)

84

84

TBA

84

84

42

Black Water Capacity (gal.)

32

32

TBA

32

32

32

Awning Size

16'

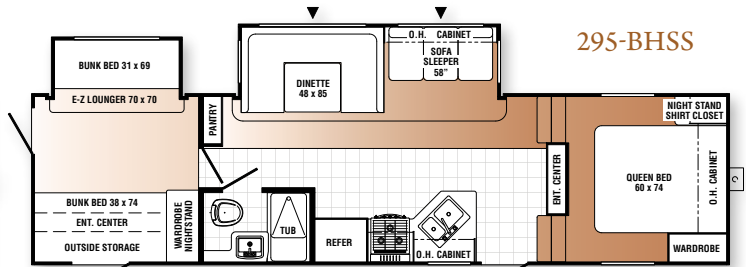
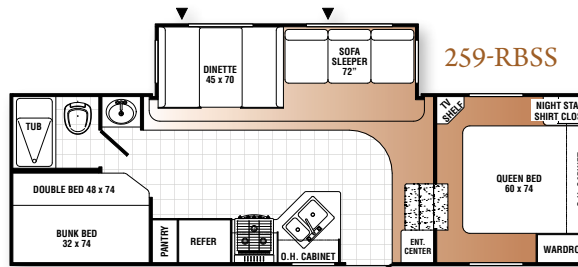
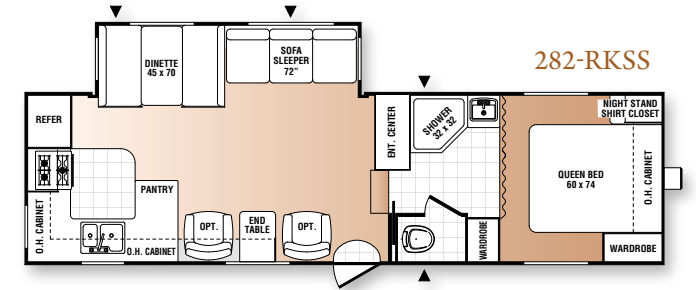
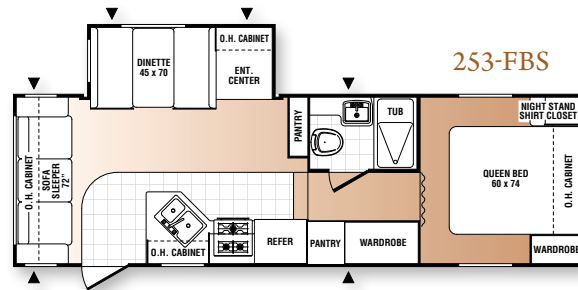
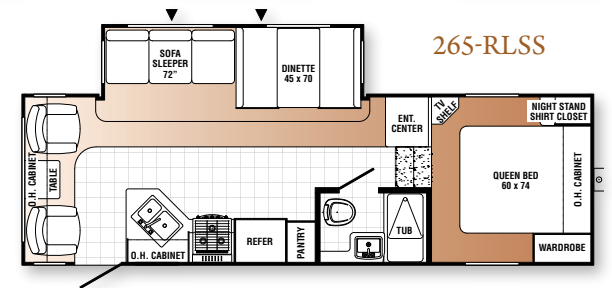
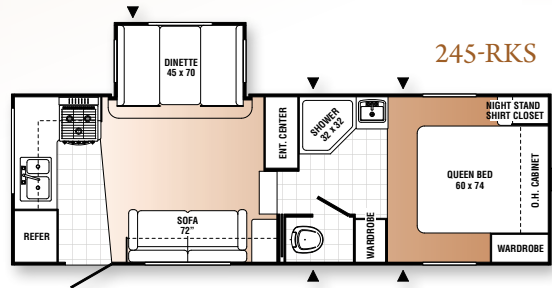
16'

18'

18'

16'

16'





## LEISURE

Enjoy your own vacation home with a Puma Park Trailer. They offer the best in leisure living with two spacious floor plans and three bedroom options to accommodate your family's needs. Residential style furnishings and a large master bedroom with king size bed ensure your vacationing comfort.

MULBERRY DECOR



39-PTBSS SHOWN IN MULBERRY DECOR

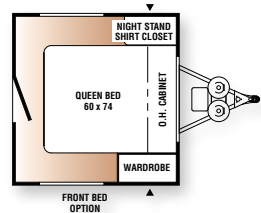
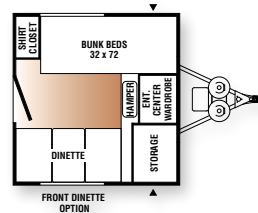
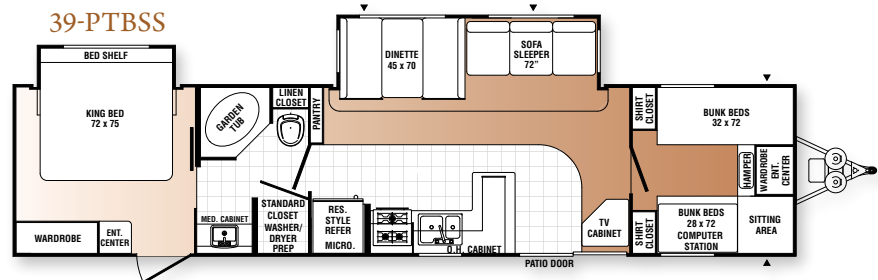
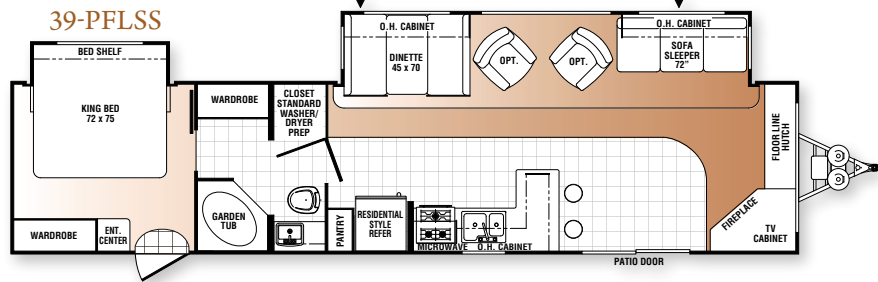




MODELS

39-PFLSS 39-PTBSS

Hitch Dry Weight (lbs.)	1150	800
Dry Axle Weight (lbs.)	8280	9230
Total Dry Weight (lbs.)	9430	10030
Carrying Capacity (lbs.)	1417	467
GVWR (lbs.)	11300	10960
Tire Size	15"	15"
Interior Height	84"	84"
Exterior Height w/AC	11'9"	11'9"
Exterior Width	96"	96"
Overall Length	40'2"	40'2"
Fresh Water Capacity (gal.)	45	45
Grey Water Capacity (gal.)	84	84
Black Water Capacity (gal.)	32	42
Awning Size	21'	21'





## EXTERIOR

- Powder Coated Frames
- EZ Lube Axles
- .024-Gauge Mesa Aluminum Exterior
- Black Window Frames
- Clamp Ring Windows
- Double Entry Doors (where applicable)
- Pass-Thru Storage (where applicable)
- Rubber Roof - 12 Year Manufacturer's Warranty
- 9" Three-Tier Steps
- Rain Gutters
- R7-Fiberglass Insulation (all 6 sides)
- 4-1/2" Crowned Truss Rafters
- Automotive Style Fender Skirts
- Radius Trunk Doors
- Wrapped Darco Underbelly
- One Piece, 24' Sheet, 5/8" Floor Decking (25 Year Manufacturer's Warranty by Affiliated Resources, Inc.)
- 2 x 3 Flush Joists on 12" Centers
- Lighted Pass-Thru Exterior Compartments (where applicable)
- 2-20 lb. Gas Bottles
- 6 Gal. DSI Hot Water Heater
- Rack and Pinion Electric Slide System with Manual Override (standard on all slideout models)
- High End Exterior Graphics
- Extra Color Band Metal on the Bottom Sidewall
- Heavy Duty Storage Door for the Puma Den Option
- Rear Garage Storage Compartment (standard on the 27-FQ and 28-BHS)

## INTERIOR

- Seating Technology Furniture
- 80" Interior Height
- Insulated Duct A/C (all models)
- Floor Ducted Heat
- 30,000 BTU Furnace
- Flush Floor Slide-Outs

- 16" Deep Overhead Cabinets in Super-Slide Models
- Real Wood Drawers
- Plant Built Wood Medicine Cabinet with Mirrored Door
- 60/40 Deep Double Bowl Kitchen Sink
- High Rise Kitchen Faucet
- Arch Top Mortise and Tenon Cabinet Doors
- Suburban 3-Burner, High Output Range
- Knife Rack
- Upgrade Window Treatment
- 55 Amp Converter with Battery Charger
- Flip Down Utensil Tray (kitchen)
- Divided Silverware Drawer (all models)
- Innerspring Mattress
- Bedroom Carpet
- 1 Sink Cover
- Single Door Refer
- Power Vent in Bath
- 12V Shower Light
- 4 Interior Colors
- Coat Hooks in Entry Way
- Bathroom Door Casing
- Quilted Bunk Mats
- Polished Nickel Finish Cabinet Hardware, Light and Bath Fixtures
- Cabinet Doors under Dinette Seats
- Upgraded Wood Facia Slide-Out Framing
- Upgraded Head Boards
- Upgraded Carpet (21 oz.)
- Upgraded Residential Congoleum® Linoleum
- High End Looking Counter Tops
- Color Coordinated Sink
- Full Length Wardrobe and Shirt Closet in Front Bedrooms (Travel Trailer only)
- Surround Sound and 19" LCD TV (Standard in 31-BHSS and 29S-BHSS)

## STD. SAFETY FEATURES

- CO2 Detector
- LP Leak Detector
- Fire Extinguisher
- Smoke Detector

## TRAVEL TRAILER OPTIONS

- Water Purifier
- Sink Cover
- Range Cover
- Galley Extension
- Double Door Refer
- 6 Gal. Gas/Electric DSI Hot Water Heater
- Water Heater By-Pass (forced option)
- 21" Oven
- Microwave
- Create-a-Breeze™ Fan (exchange)
- AM/FM CD Stereo
- TV Antenna with Booster and Cable Hook-Up
- Bedroom TV Hook-Up (NA 19-FS)
- Extra Roof Vent
- 13,500 BTU Ducted A/C
- 15,000 BTU Ducted A/C
- Bedspread
- Outside Grill
- Tub Surround
- Mini Blinds
- Day/Night Shades
- Wall Border
- Front Window with Rockguard
- Awning
- Electric Awning
- 2 Stabilizer Jacks
- 4 Stabilizer Jacks
- Outside Shower
- Tinted Safety Glass
- Diamond Plate
- 30 lb. Gas Bottles and Cover
- Radial Tires
- Spare Tire and Carrier
- AM/FM CD DVD Home Theater Surround Sound System
- Double Bed Spread
- PUMA Den\*

- Swivel Rocker\*
- Bath Skylights
- Free Standing Dinettes\*
- Overhead Cabinets in Slide Room\*
- Hide-A-Bed Sofa\*
- Glass Shower Door\*
- Roof Ladder
- Heated Tanks
- J-Lounge Sofa (29-RKSS only)
- Stacked Bunk Option (19-FS and 27-FQ only)
- Interior Decors: Cocoa, Indigo, Mulberry and Sage

## PUMA PREMIER PACKAGE

\*Available on Select Models

## PARK TRAILER STANDARDS

- 6 Gal. Gas/Electric DSI Hot Water Heater
- Upgrade Mattress
- Home Theater DVD Surround Sound AM/FM/CD Player
- FS Range
- Phone Jacks
- Patio Door
- Residential Refer
- Solid Oak Raised Panel Cabinet Doors (throughout)
- Lambrequin Window Treatments
- 6 Panel Interior Passage Doors
- Bedroom Roof Vent
- TV

## PARK TRAILER OPTIONS

(See your dealer for details)

## FIFTH WHEEL OPT.

- Water Purifier
- Sink Cover
- Range Cover
- Galley Extension
- Double Door Refer
- 6 Gal. Gas/Electric DSI Hot Water Heater

- Water Heater By-Pass (forced option)
- Oven
- Microwave
- Create-a-Breeze™ Fan (exchange)
- AM/FM CD Stereo
- TV Antenna with Booster and Cable Hook-Up
- Bedroom TV Hook-Up
- Extra Roof Vent
- 13,500 BTU Ducted A/C
- 15,000 BTU Ducted A/C
- Bedspread
- Tub Surround
- Mini Blinds
- Day/Night Shades
- Wall Border
- Swivel Rockers\*
- Outside Grill
- Awning
- Electric Awning
- 2 Stabilizer Jacks
- Outside Shower
- Diamond Plate
- ABS Front Cap with Diamond Plate
- Tinted Safety Glass
- Power Front Jacks
- 30 lb. Gas Bottles
- Radial Tires
- Spare Tire and Carrier
- AM/FM CD DVD Home Theater Surround Sound System
- PUMA Den\*
- Bath Skylights
- Free Standing Dinettes\*
- Overhead Cabinets in Slide Room\*
- Hide-A-Bed Sofa\*
- Glass Shower Door\*
- Roof Ladder
- Heated Tanks
- "J" Lounge Sofa (282-RKSS only)
- Interior Decors: Cocoa, Indigo, Mulberry and Sage

## PUMA PREMIER PACKAGE

\*Available on Select Models





**EXTRA WIDE STORAGE**



**REAR STORAGE**  
(Standard on 27-FQ, and 28-BHS)



**PUMA DEN DOOR**  
(Optional)



**DINETTE UNDER SEAT STORAGE ACCESS**

## NEW FEATURES

- EXTERIOR**
- Scare Light Standard on all Models
  - Satellite TV Hook-Up Standard on all Models

- INTERIOR**
- Arch Style Cabinet Doors
  - 30,000 BTU Furnace Standard on all Models

- OPTIONS**
- Electric Awnings on all Models
  - Day/Night Shades

## FLOOR PLAN CHANGES

- Overhead Cabinets Standard  
(Travel Trailer Models 27-RLS, 27-DSQ and 29-FQS  
Fifth Wheel Models 245-RKS and 253-FBS)
- Cabinets Above Sofa (Travel Trailer Model 19-FS)
- Stacked Bunk Options with Wardrobe  
(Travel Trailer Model 19-FS and 27-FQ and in  
Fifth Wheel Model 259-RBSS)

## PUMA PREMIER PACKAGE

- Radius Entry Door
- Folding Grab Handle
- Raised Panel Cabinet Doors  
(Eye Level Living Room and Kitchen)
- Lambrequin Window Treatments
- Overhead Cabinets in Super Slide Models
- Day/Night Window Shades
- Bi-Fold Doors In Place of Curtains  
(Where Applicable)
- Dark Tinted Safety Glass
- Upgraded Front Cap (Fifth Wheels)
- AM/FM CD DVD Home Theater Surround Sound System
- 6 Panel Interior Passage Doors
- Color Band Metal at the Top of the Coach
- Diamond Plate Standard
- High End Metal Rear Bumper Cover
- Chrome Trim Rings and Hubs on the Wheels
- Frosted Light Above Sofa in Super Slides
- Throw Pillows for the Sofa
- Roof Ladder
- Special Puma Premier Package Decal

**AVAILABLE IN ALL MODELS!!**

## PARK TRAILER RESIDENTIAL PKG.

- Residential Style 18 Cu. Ft. Refer
- Patio Door
- Free-Standing Range



## CONSTRUCTION & FEATURES

- A. Rubber Roof (12 year warranty)
- B. Rugged, Powder Coated Steel I-Beam Frame
- C. Sturdy .024 Gauge Aluminum Skin
- D. Exterior Amber Lens Patio Light
- E. Exterior Hitch Light for Night-Time Hook Up
- F. 45 Gallon Fresh Water Tank
- G. Bold Exterior Graphics
- H. Residential Grade Carpet
- I. Color Band Metal Enhances Exterior Looks
- J. Sidewall Studding Spaced 16" Apart
- K. Longitudinal Floor Studding Spaced 12" Apart
- L. 5/8" DynaSpan™
- M. New Armstrong Congoleum® Linoleum Flooring Throughout
- N. R7 Fiberglass Insulation Cut and Glued Between Sidewall Studs
- O. 4-1/2" Crowned Truss Roof Rafters
- P. Steel Crossmembers for Added Support
- Q. Floor Ducted Heat
- R. Insulated Wrapped Ducted Air Conditioning Runs
- S. 3/8" Roof Decking



# TOYHAULER

## ADVENTURE

The Puma Unleashed is the ultimate toy hauler with a large cargo area to haul all your outdoor toys and plush living quarters for your family's comfort. Four innovative floor plans offer accommodations for the whole family with master bedrooms, queen size bunks, sofa sleepers, and flip-over dinettes. There's room for everyone!



SHOWN IN SPORT ORANGE DECOR



SHOWN IN SPORT RED DECOR



# STANDARD FEATURES

- Heavy Duty I-Beam Frames with EZ Lube Axles
- 1/4" x 8" Tie Down Reinforcement Plates for Secure Cargo Tie Downs
- Beaver Tail Rear Floor for Easy Loading
- .024 Aluminum Siding for Rigid Affordability and Ease of Maintenance
- 2" x 2" Wood Framed Sidewalls on 16" Centers
- 2" x 3" Floor Joist on 10" Centers
- R-7 Insulation Floor, Walls, and Ceiling for Comfort
- One Piece 5/8" DynaSpan™ Floor Decking with a Limited Lifetime Warranty
- One Piece Comfort Back Vinyl Flooring with a 10-Year Wear Guarantee
- 3/8" Walkable Roof Decking Over 4-1/2" Crowned Roof Rafters
- One Piece Rubber Roof with 12 Year Warranty
- Insulated Duct For Air Conditioning in Ceiling
- Floor Ducted Heat
- Durable Easy-to-Clean Puma Silver Interior Wall Vinyl
- 55 Amp Converter Standard
- A-Frame Generator Rack (15-FKU)
- 2-20 lb. LP Tanks (15-FKU)

# OPTIONS

- 5.1 Dolby Surround Sound System with Sub-Woofer, AM/FM/DVD Player, Weather Band, XM Radio, and Plug-In for iPod (23-FBU, 27-SBU & 28-TBU)
- 20" LCD Flat Screen TV with Movable Bracket for Easy Mounting Inside or Outside (23-FBU, 27-SBU & 28-TBU)
- Front Baggage Compartment with Sliding Tray (23-FBU, 27-SBU & 28-TBU)
- Front Exterior Baggage Compartment (15-FKU)
- Sofas Fold-Down into Queen Bed (15-FKU)
- 25 Gallon Fuel Station with Timer (23-FBU, 27-SBU & 28-TBU)
- Manual Queen Bed (Available all Models)
- Electric Single or Double Queen Bed(s) (Available all Models)
- Standard Puma Interiors (Available all Models)
- 4.0 Onan® Generator Gas or 3.6 Onan® Generator LP (23-FBU, 27-SBU & 28-TBU)

\*Additional Options Available

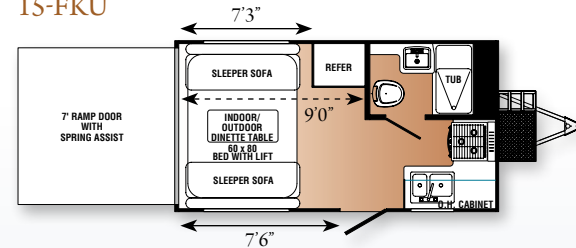


**BAGGAGE COMPARTMENT WITH SLIDING TRAY**

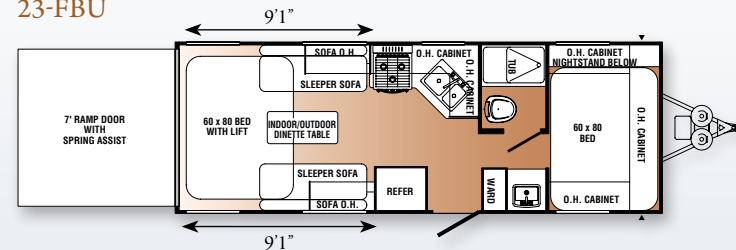
**FUEL STATION**

**BAGGAGE COMPARTMENTS**

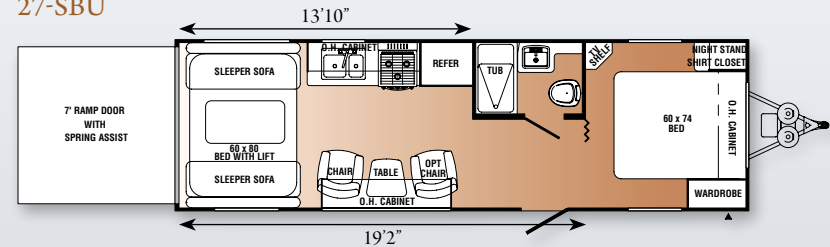
**15-FKU**



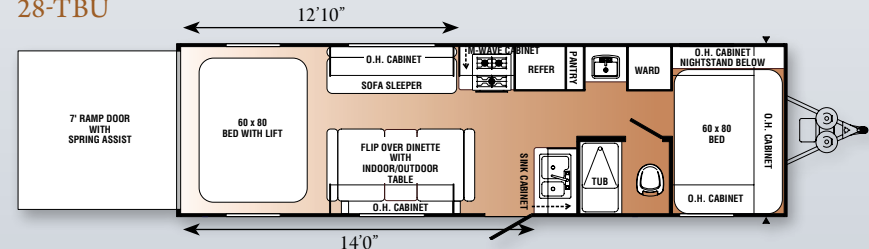
**23-FBU**



**27-SBU**



**28-TBU**



## MODELS

15-FKU    23-FBU    27-SBU    28-TBU

Hitch Dry Weight (lbs.)	760	1187	902	1206
Dry Axle Weight (lbs.)	3640	4688	6028	6069
Total Dry Weight (lbs.)	4400	5875	6930	7275
Carrying Capacity (lbs.)	1680	5472	3220	3125
GVWR (lbs.)	6080	11347	11062	10400
Tire Size	225/75D/14	225/75D/15	225/75D/15	225/75D/15
Interior Height	84"	84"-96"	84"-96"	84"-96"
Exterior Height w/AC	10'7"	12'	12'	12'
Exterior Width	96"	96"	96"	96"
Overall Length	20'8"	26'4"	30'5"	31'2"
Fresh Water Capacity (gal.)	45	100	100	100
Grey Water Capacity (gal.)	42	42	42	42
Black Water Capacity (gal.)	32	32	32	32
Awning Size	13'	13'	14'	16'



## ELECTRIC AWNING

Easy-to-operate electric awnings are available on all Puma models for your outdoor comfort and convenience. High end graphics, diamond plate stone guard, champagne metal trim, and automotive style fender skirts create a sleek, contemporary exterior that turns heads.



### PUMA DIVISION

Forest River, Inc.  
31450 M-86 West  
Colon, MI 49040  
Phone: (269) 432-3271  
[www.palominorv.com](http://www.palominorv.com)

All illustrations and specifications contained in this literature are based on the latest product information at time of publication. Forest River, Inc. reserves the right to make changes in prices, colors, materials, equipment and specifications at anytime without notice and assumes no responsibility for any error in this literature. All weights shown are approximate. All units are shipped FOB. point of manufacture.

CONSULT YOUR LOCAL DEALER FOR WARRANTY INFORMATION.

## PALOMINO RV ENCOURAGES YOU TO BUY LOCALLY

Palomino RV strongly encourages our retail customers to purchase from their local dealership whenever possible due to the following factors:

- Our Dealers are, as a rule, independently owned and operated businesses. Outside of those customers they personally sold products to, they are not contractually obligated to perform warranty service on Palomino products that were purchased elsewhere. There **may** be an occasion that you would be required to return to the point of purchase to satisfy warranty requirements.
- Although many dealerships will eventually service products not purchased at their place of business, they will usually take care of their customers and other Palomino customers who are traveling away from their local dealer as they would their own.
- Local purchases allow a customer to establish a relationship with a dealer close to home. This relationship provides the customer with a convenient location for service and support from a "home town" professional.
- The opportunity for a thorough PDI (Pre-Delivery Inspection) and product orientation is an additional benefit of buying from your local dealer, further providing the opportunity for refresher courses or the ability to get questions answered much more conveniently.
- For our Canadian customers, there are also requirements which must be met to bring an RV purchased out of the country to their home. Although not insurmountable, these requirements may involve such things as additional inspections and certifications, taxes and fees. Your local Canadian Dealer is a professional at meeting these requirements.

Palomino RV's goal is for all RV Owners to fully enjoy their RV experience. In light of this goal, and considering the advantages of buying local, we encourage you to be thorough when determining what product to purchase and which dealer to purchase it from as both are key to your ultimate satisfaction and the realization of your dreams.

## YOUR DEALER