

# 2009 Chevrolet Corvette w/ 3LT & Z51 Performance Package!

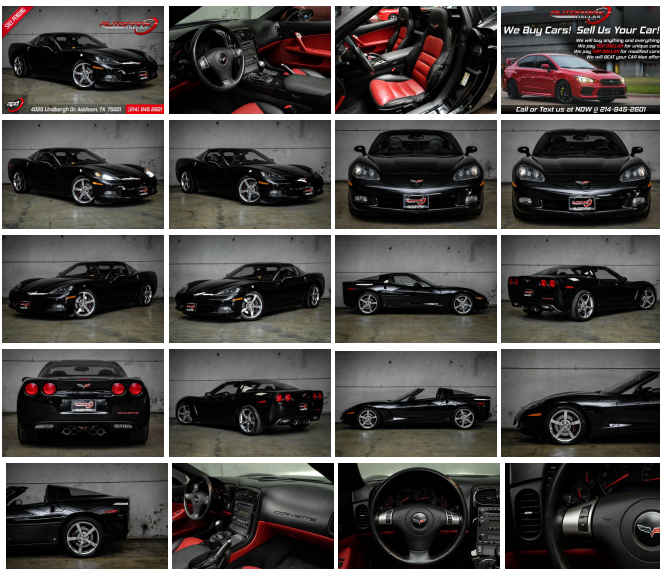
View this car on our website at [autoparkdallas.com/6878458/ebrochure](http://autoparkdallas.com/6878458/ebrochure)



Website Price **\$27,995**

## Specifications:

<b>Year:</b>	2009
<b>VIN:</b>	1G1YY26W695102401
<b>Make:</b>	Chevrolet
<b>Model/Trim:</b>	Corvette w/ 3LT & Z51 Performance Package!
<b>Condition:</b>	Pre-Owned
<b>Body:</b>	Coupe
<b>Exterior:</b>	Black
<b>Engine:</b>	ENGINE, 6.2L V8 SFI
<b>Interior:</b>	Red Leather
<b>Transmission:</b>	TRANSMISSION, 6-SPEED MANUAL, SHORT-THROW
<b>Mileage:</b>	50,549
<b>Drivetrain:</b>	Rear Wheel Drive
<b>Economy:</b>	City 15 / Highway 25



AutoPark Dallas is thrilled to offer you this Black on Two-Toned 2009 Chevrolet Corvette with 3LT & Z51 Performance Package for sale! There is not a single person that does not know what the Chevrolet Corvette is with its signature look and being the notorious low-profile sports car. These bald eagle screaming U.S. born beauties are a thrill to drive and always stand out in any crowded car meet or parking lot. Our Corvette here APD was handled with care as the condition of this Corvette is amazing, loaded well straight from the factory, and best of all has the Z51 Performance Package to give the extra 'Need for Speed' feel! Come swing by to check out this Corvette parked in our indoor 16,000 Sq Ft Showroom located in Dallas, Texas amongst our inventory of 100+ other Performance / Modified and Luxury cars!

## 2009 Chevrolet Corvette

\* Clean CarFax !

\* 2 Set of Keys !\*

\* LOW MILEAGE !\*

\* 3LT Package !\*

\* Z51 Performance Package !\*

Solid Black Exterior

Color-Matching Removable T-Top

Color-Matching Removable Floor  
Two-Toned Red & Black Leather Interior  
Hands Free Bluetooth  
Heated Driver & Passenger Seats  
Digital Heads-Up Display  
Dual Climate Control  
BOSE Premium Audio System  
Driver Seat Memory  
Push Button Start  
Cruise Control  
In-Dash 6-Disc CD Changer  
Daytime Running Lights  
HomeLink Garage Opener  
Comfort Access Keyless Entry  
Steering Wheel Mounted Controls  
6.0L LS2 V8 SFI Engine  
6-Speed Manual Transmission  
Rear Wheel Drive  
Professionally Detailed!  
Well Maintained!  
**\* Free CarFax Report !\***  
AND SO MUCH MORE!!!

---

## Financing is available!

Check out our Payment Calculator to get an estimate on your monthly payments!

**OR**

Get pre-approved in no time by filling out a credit application on the 'Finance' section of our website!

We also offer MANY different Extended Warranty options!

---

Check out our Google Reviews by  
**\*Clicking\* this LINK!**

Referrals and Testimonials is what our business is built on!

---

The team here at AutoPark Dallas, is dedicated to offering a level of customer service not usually found in the automobile industry. Thanks to years of extensive car buying / selling experience, we pursue quality used and new vehicles that are hand-picked from factory sources. Our

used and new vehicles that are hand picked from factory sources. Our love for automobiles and dislike of traditional dealership tactics is what motivates us to provide the service we do! The pride we take in continuing this service long after the vehicle has been delivered is what we strive for! Looking forward to making every effort to see that our customer is completely satisfied and a friend for life!

Pre-purchase inspections are always  
welcomed!

We also offer airport pick-up, competitive financing options, free CarFax Reports, Car Shipping nationwide, Extended Warranty plans, and so much more!

Trade-In(s) are always accepted or sell us your used car (MODIFIED OR NOT)! Please call or text for more information about Trade-Ins or selling your car to us @ (214) 945-2601!

---

**#(214) 945-2601**

Call or Text **Anytime!**

Se habla Español

**WE BUY CARS!**

**WWW.AUTOPARKDALLAS.COM**

---

2009 Chevrolet Corvette w/ 3LT & Z51 Performance Package!

Auto Park Dallas - (214) 945-2601 - View this car on our website at [autoparkdallas.com/6878458/ebrochure](http://autoparkdallas.com/6878458/ebrochure)

## Our Location :



2009 Chevrolet Corvette w/ 3LT & Z51 Performance Package!

Auto Park Dallas - (214) 945-2601 - View this car on our website at [autoparkdallas.com/6878458/ebrochure](http://autoparkdallas.com/6878458/ebrochure)

## Installed Options

### Interior

- Keyless Access with push button start and 2 remote transmitters that enable automatic door unlock and open by touching door switch
- Lighting, interior with courtesy, cargo and glovebox- Luggage shade
- Memory Package recalls 2 driver "presets" for 6-way power seat, outside mirrors and telescoping steering column
- Mirror, inside rearview auto-dimming with compass, includes dual reading lights
- Oil life monitoring system- Seat adjuster, driver 6-way power
- Seat adjuster, front passenger 6-way power
- Seats, Sport front bucket with perforated leather seating surfaces includes back angle adjustment, adjustable lumbar and side bolsters
- Seats, heated driver and front passenger - Steering column, Tilt-Wheel, manual
- Steering column, power telescopic with manual tilt
- Steering wheel controls, mounted audio controls
- Steering wheel, 3-spoke leather-wrapped
- Storage with lockable glovebox, center console and 2 rear compartments with covers
- Theft-deterrent system, vehicle push button start, immobilizer and audible visual alarm
- Universal Home Remote includes garage door opener, 3-channel programmable, located on driver visor
- Visors, driver and front passenger illuminated vanity mirrors
- Windows, power with driver and passenger Express-Down
- Instrumentation, electronic analog with Driver Information Center and 2-line display
- Head-Up Display with dot-matrix readouts for street mode, track mode with g-meter, vehicle speed, engine rpm and readings from key gauges including water temperature and oil pressure
- Hatch release, push button open with power hatch pull-down - Floor mats, carpeted
- Door locks, power programmable with lockout protection- Defogger, rear-window, electric
- Cruise control, electronic with set and resume speed
- Console, floor 2 covered cup holders, ashtray with cigar lighter, auxiliary power outlet and CD storage
- Cargo net, in rear compartment area- Air filtration system with pollen filter

- Air conditioning, dual-zone automatic climate control with individual climate settings for driver and right-front passenger and outside temperature display

---

## Exterior

- Wipers, front intermittent
- Wheels, 5-split spoke, Silver-painted aluminum 18" x 8.5" (45.7 cm x 21.6 cm), front and 19" x 10.0" (48.3 cm x 25.4 cm), rear
- Tires, rear P285/35ZR19 Eagle F1 extended mobility
- Tires, front P245/40ZR18 Eagle F1 extended mobility
- Roof panel, 1-piece body-color, removable
- Mirrors, outside heated power-adjustable and driver-side auto-dimming, body-color
- Headlamps, dual projector lamps, Xenon, High-Intensity Discharge (HID) low-beam tungsten-halogen high-beam with automatic exterior lamp control
- Glass, Solar-Ray light-tinted- Fog lamps, front, integral in front fascia

---

## Safety

- Keyless Access with push button start and 2 remote transmitters that enable automatic door unlock and open by touching door switch
- Lighting, interior with courtesy, cargo and glovebox- Luggage shade
- Memory Package recalls 2 driver "presets" for 6-way power seat, outside mirrors and telescoping steering column
- Mirror, inside rearview auto-dimming with compass, includes dual reading lights
- Oil life monitoring system- Seat adjuster, driver 6-way power
- Seat adjuster, front passenger 6-way power
- Seats, Sport front bucket with perforated leather seating surfaces includes back angle adjustment, adjustable lumbar and side bolsters
- Seats, heated driver and front passenger - Steering column, Tilt-Wheel, manual
- Steering column, power telescopic with manual tilt
- Steering wheel controls, mounted audio controls
- Steering wheel, 3-spoke leather-wrapped
- Storage with lockable glovebox, center console and 2 rear compartments with covers
- Theft-deterrent system, vehicle push button start, immobilizer and audible visual alarm
- Universal Home Remote includes garage door opener, 3-channel programmable, located on driver visor
- Visors, driver and front passenger illuminated vanity mirrors
- Windows, power with driver and passenger Express-Down
- Instrumentation, electronic analog with Driver Information Center and 2-line display
- Head-Up Display with dot-matrix readouts for street mode, track mode with g-meter, vehicle speed, engine rpm and readings from key gauges including water temperature and oil pressure
- Hatch release, push button open with power hatch pulldown - Floor mats, carpeted
- Door locks, power programmable with lockout protection- Defogger, rear-window, electric
- Cruise control, electronic with set and resume speed
- Console, floor 2 covered cup holders, ashtray with cigar lighter, auxiliary power outlet and CD storage
- Cargo net, in rear compartment area- Air filtration system with pollen filter
- Air conditioning, dual-zone automatic climate control with individual climate settings for driver and right-front passenger and outside temperature display

---

## Mechanical

- Active handling improves traction and enhances vehicle stability
- Brakes, 4-wheel antilock, 4-wheel disc- Engine access, rear-opening hood
- Engine, 6.2L V8 SFI (430 hp [320.6 kW] @ 5900 rpm, 424 lb-ft of torque [572.4 N-m] @ 4600 rpm)
- Exhaust, aluminized stainless-steel with 3" polished stainless-steel tips
- Rear axle, 3.42 ratio, limited slip (Included and only available with (MN6) 6-speed manual transmission.)
- Rear wheel drive- Steering, power, speed-sensitive rack-and-pinion, variable ratio
- Suspension, 4-wheel independent includes transverse composite springs
- Transmission, 6-speed manual, short-throw (Includes (GU6) 3.42 axle ratio.)

---

## Option Packages

### Factory Installed Packages

- \_\_\_\_\_  
ENGINE, 6.2L V8 SFI  
(430 hp [320.6 kW] @ 5900 rpm,  
424 lb-ft of torque [572.4 N-m]  
@ 4600 rpm)

- \_\_\_\_\_

TRANSMISSION, 6-SPEED MANUAL,  
SHORT-THROW  
(Includes (GU6) 3.42 axle ratio.)

---

EXHAUST, DUAL-MODE,  
PERFORMANCE

increases horsepower, adds 6 hp,  
aggressive exhaust sound \$1,195

---

LICENSE PLATE BRACKET, FRONT  
\$15

---

Z51 PERFORMANCE PACKAGE

performance-oriented package for  
the Gymkhana/Autocross  
enthusiast; includes extra  
cooling, stiffer springs and  
stabilizer bars, specific shock  
absorbers, larger brakes with  
cross-drilled rotors, specific  
tires and Z51-specific 6-speed  
manual when ordered with 6-  
speed manual transmission or  
(GU2) performance axle ratio  
with 6-speed paddle shift  
automatic \$1,695

---

REAR AXLE, 3.42 RATIO, LIMITED SLIP

---

EMISSIONS, FEDERAL REQUIREMENTS

---

BLACKSTANDARD PAINT

---

PREFERRED EQUIPMENT GROUP

includes Standard Equipment \$4,555

---

AUDIO SYSTEM, AM/FM STEREO WITH  
6-DISC IN-DASH CD CHANGER AND  
MP3 PLAYBACK

seek-and-scan, digital clock, auto-  
tone control, Radio Data  
System (RDS), automatic  
volume, TheftLock and  
auxiliary input jack. Includes  
(U65) Bose premium 7-speaker  
system

---

RED, TWO-TONE LEATHER SEATING  
SURFACES

(Two-tone modified seats with  
perforated leather seating  
surfaces, crossed flag  
embroidery and contrasting  
stitching) \$695

---

SEATS, SPORT FRONT BUCKET WITH  
PERFORATED LEATHER SEATING  
SURFACES

includes back angle adjustment,  
adjustable lumbar and side  
bolsters

---

WHEELS, 5-SPOKE, FORGED  
POLISHED ALUMINUM

18" x 8.5" (45.7 cm x 21.6 cm)  
front and 19" x 10.0" (48.3 cm  
x 25.4 cm) rear \$1,295

---

Option Packages Total

\$9,450



[autoparkdallas.com](http://autoparkdallas.com)

(214) 945-2601

4025 Lindbergh Dr.

Addison, TX 75001

© 2022 AutoRevo - All rights reserved. - Powered by AutoRevo