

2011 ASPIRE

Dare to dream.



ENTEGRACOACH  
COACH®

ASPIRE

ENTEGRACOACH Without compromise.

THE  
*Bontrager*  
FAMILY PROMISE

After 40 years of building Jayco, the world's largest privately-owned RV manufacturer, our family is proud to stand behind every Entegra Coach we build with the Bontrager Family Promise. It's a promise to provide unfailing customer service—before, during and after the sale. To learn more, visit us online or see your local Entegra Coach dealership.

*Derald L. Bontrager* *Wilbur L. Bontrager*

DERALD & WILBUR BONTRAGER  
Entegra Coach Founders



2011 ENTEGRA COACH

# Expectations Exceeded.

THE 2011 ASPIRE is a dream unveiled. It indulges the senses and reinvents the concept of luxury.

With a 400 HP Cummins engine and Freightliner chassis, the Aspire does more than just command the road—it owns it—and every other winding highway and unconquered pass.

Inside, the Aspire makes its own powerful statement with exquisite porcelain tiles, solid hardwoods and lavish furnishings that will exceed *all* your expectations—even the ones you thought unattainable. Dream. Then, revel in it.

ASPIRE®

Aspire boasts scrupulous touches, like custom-laid porcelain travertine floor and distressed Ultraleather furniture, and flaunts enviable conveniences, like a 40" LCD HDTV and central vacuum system.

ROOM TO LIVE





#### OPULENCE

With a queen-sized pillowtop mattress, rich bedding, elegant pillow shams and a decorative headboard, sleep just got more alluring, while plush designer carpeting makes it easier to rise in the morning.



#### TRANQUILITY

With stylish satin nickel hardware, DuPont Corian countertops, a porcelain stool with push-button flush and a tinted skylight, Aspire redefines refreshing.



#### LUXURY AND FUNCTION

(A) Distressed Ultraleather, (B) a one-piece walk-in fiberglass shower with integrated seat and (C) a 26" LCD HDTV home theatre system in the bedroom give Aspire impeccable sophistication.



A



B



C

All your culinary desires are fulfilled thanks to a host of enviable details, including an Amana convection microwave and recessed range, a four-door, 12 cu. ft. Norcold refrigerator with ice maker, a porcelain tile kitchen backsplash and Amish handcrafted solid hardwood cabinetry in Washington Glazed Maple or Mocha Glazed Maple.\*

\*Mocha Glazed Maple pictured.

FINE DINING



#### RIGID

Seamlessly engineered, flawlessly designed, Entegra Coach's exclusive X-Bridge chassis helps prevent flexing throughout, averting cracks in tile and grout and reducing windshield movement and noise. Meanwhile, the flush-mount slideout's sleek design is a reflection of Aspire's well-assembled construction.



#### ENTERTAINING

Accustomed to entertaining in style? Aspire will surpass your expectations with an optional exterior entertainment system, complete with 32" LCD HDTV, CD/DVD player and speakers.



#### ENGINEERING AND STYLE

(A) A steel reinforced front cap and windshield frame provide extra strength, offering added protection when driving. (B) The optional multiplex coach lighting system puts everything in one simple location, (C) while the Aqua-Hot 375-LP hydronic water and heating system conserves energy (optional).



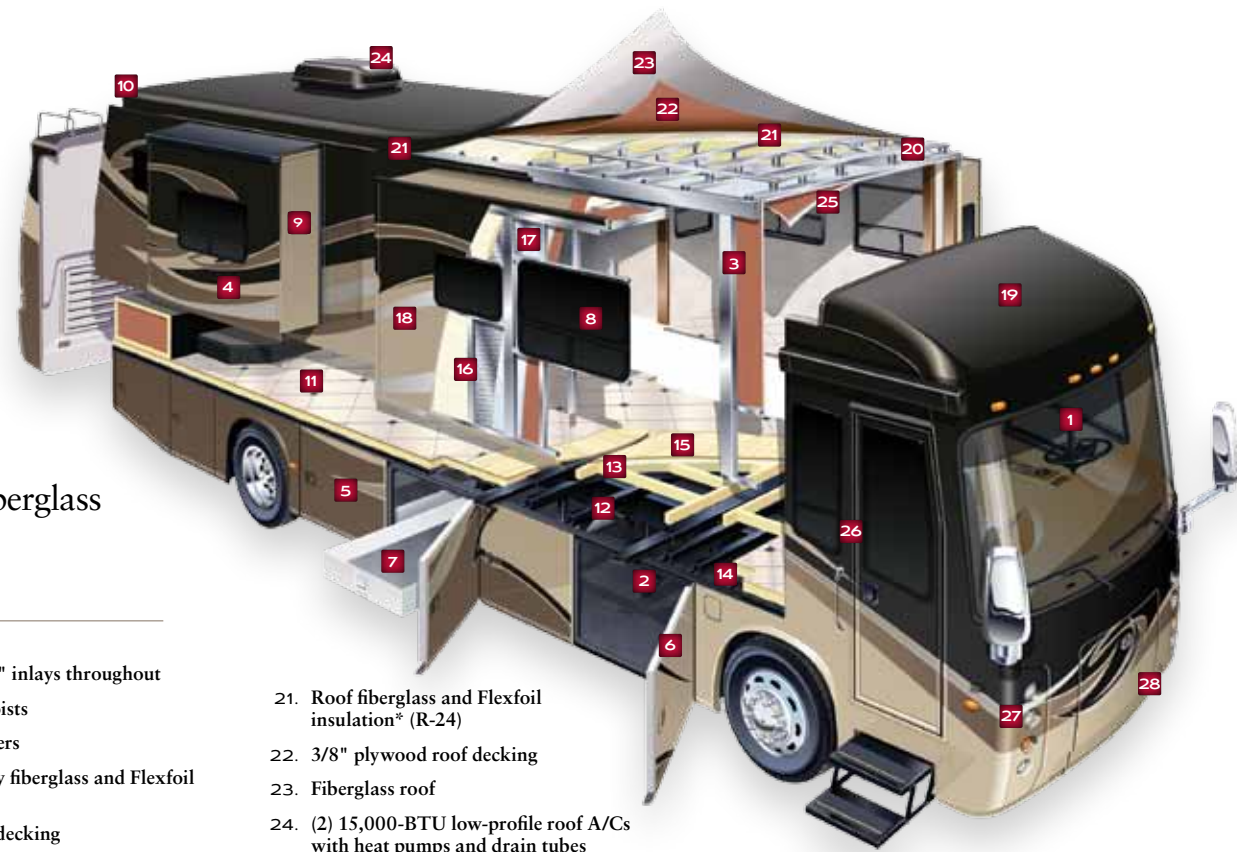
Conquer the road in opulent comfort with Aspire's Flexsteel Ultraleather captain chair with six-way power and integrated seat belt, VIP SmartWheel steering wheel, Freightliner message center, rear-view monitor with one-way audio, touch-screen AM/FM/CD/DVD player, GPS navigation, Bluetooth and an Ultra-Vision wrap-around one-piece windshield.

#### DRIVING STYLE

# Construction

Aspire is built to last with Aluma-Tru

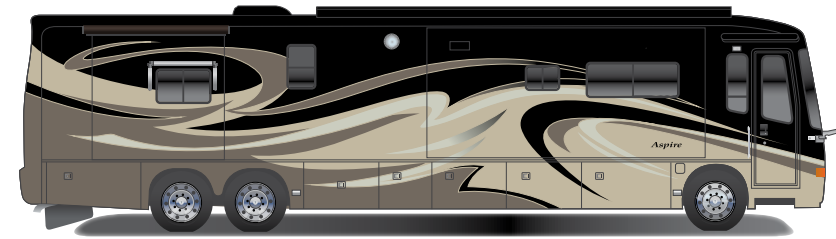
Superstructure construction on 16" centers, an engineered and reinforced V-Flex rear chassis support, fiberglass roof, front and rear molded fiberglass caps and optional Polar Pack insulation package.



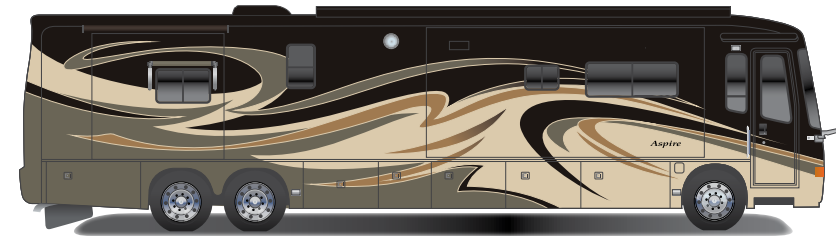
- |  |   |  |
|--|---|--|
| 1. Ultra-Vision wrap-around one-piece windshield                       | 11. Porcelain tile with 4" inlays throughout                        | 21. Roof fiberglass and Flexfoil insulation* (R-24)                      |
| 2. X-Bridge frames engineered into chassis                             | 12. Steel tubular floor joists                                      | 22. 3/8" plywood roof decking  |
| 3. Aluma-Tru Superstructure construction on 16" centers                | 13. Wood truss floor risers   | 23. Fiberglass roof  |
| 4. Deluxe full-body paint package                                      | 14. Floor and underbelly fiberglass and Flexfoil insulation* (R-33) | 24. (2) 15,000-BTU low-profile roof A/Cs with heat pumps and drain tubes |
| 5. Extra large basement storage  | 15. 5/8" plywood floor decking                                      | 25. Vinyl padded ceiling   |
| 6. Side-hinged baggage doors   | 16. Sidewall insulation   | 26. Entry door with Sur-Seal air lock                                    |
| 7. Slideout cargo tray (optional)                                      | 17. Reflective Flexfoil insulation on all 6 sides*                  | 27. Daytime running lights   |
| 8. Frameless tinted dual-pane safety-glass windows                     | 18. Smooth gel-coat fiberglass exterior                             | 28. Outside generator slideout tray                                      |
| 9. Flush-mounted slideout rooms  | 19. Front-molded fiberglass cap                                     |  |
| 10. Rear-molded fiberglass cap with high-mounted integrated air intake | 20. Welded crowned aluminum truss rafters on 16" centers            |  |

\*Part of the optional Polar Pack insulation package

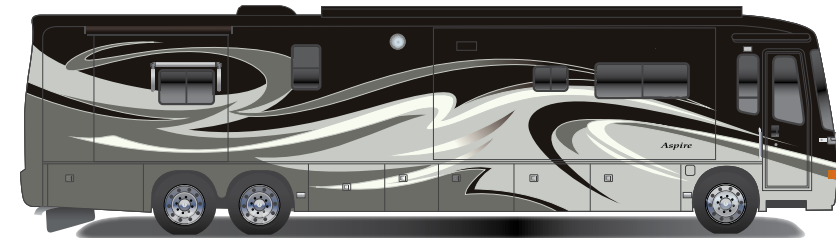
## EXTERIOR GRAPHIC OPTIONS



CHAMPAGNE GOLD



RADIANT BRONZE



SUMMIT SILVER

## FABRIC OPTIONS



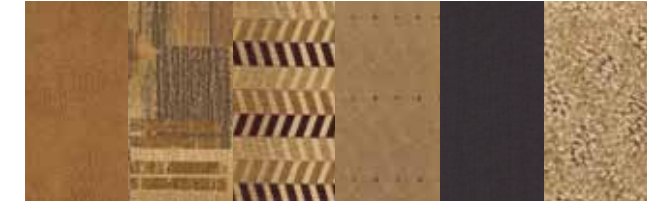
CORDOVAN



BURNT WALNUT



IVORY



CRÈME BRULÉE

## WOOD



WASHINGTON GLAZED MAPLE



MOCHA GLAZED MAPLE



CARAMEL GLAZED MAPLE \*

\*Standard bathroom wood for 42DLQ and 42RBQ



## STRENGTH

A structure's foundation should never be compromised, which is why Aspire is built on a Freightliner XCR Series chassis and Entegra Coach's exclusive X-Bridge frame. Ingeniously crafted with strength in mind, Aspire's fully integrated design provides superior support and stabilization, plus easy steering and smooth braking for a quiet, comfortable ride.



## POWER

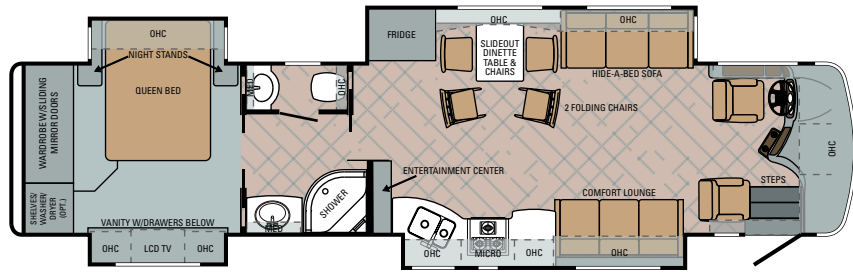
Boasting a Cummins ISL turbocharged 400 horsepower engine with Allison 3000 MH six-speed transmission and electronic shifter, Aspire has power to spare, while its muffled Jake brake system provides quieter, more efficient braking.

FLOORPLANS

WARD = wardrobe MICRO = microwave FRIDGE = refrigerator  
LAV = bathroom sink OHC = overhead cabinets MED = medicine cabinet

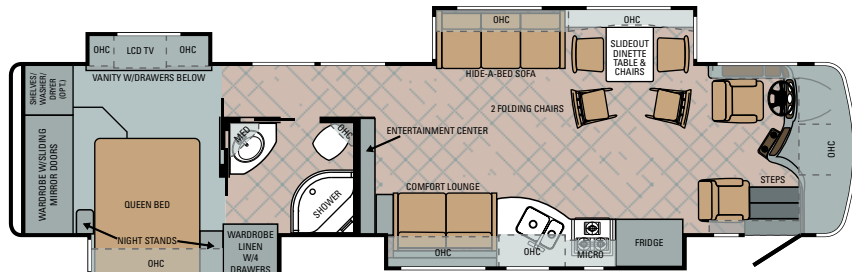
ASPIRE | 40DRQ

Ext. Length: 40' 9" Ext. Height: 12' 8"



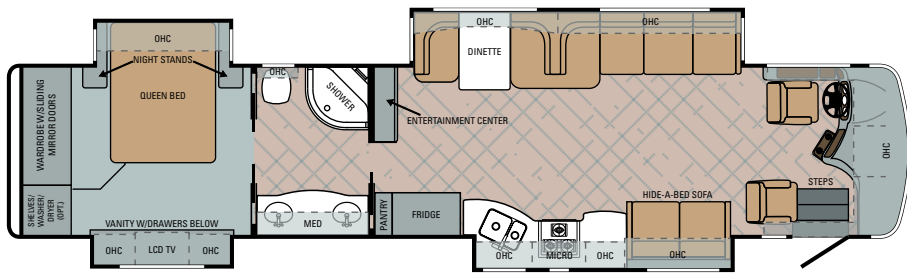
ASPIRE | 40SKT

Ext. Length: 40' 9" Ext. Height: 12' 8"



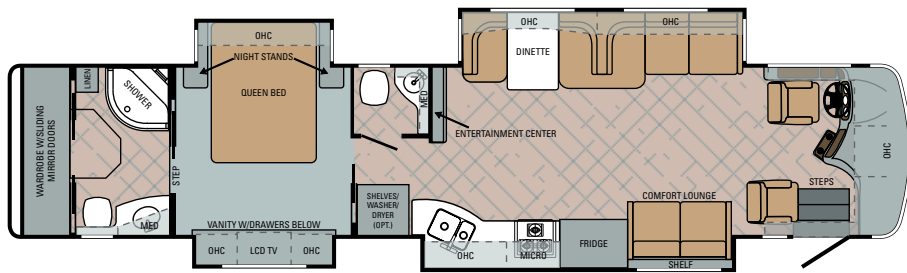
ASPIRE | 42DLQ

Ext. Length: 43' 1" Ext. Height: 12' 10"



ASPIRE | 42RBQ

Ext. Length: 43' 1" Ext. Height: 12' 10"



SPECIFICATIONS

FLOORPLAN	GVWR (LBS.)	GCWR (LBS.)	FRONT GAWR (LBS.)	REAR GAWR (LBS.)	TAG AXLE GAWR (LBS.)	WHEEL BASE	OVERALL LENGTH	OVERALL HEIGHT WITH AIR & SATELLITE	EXTERIOR WIDTH	INTERIOR HEADROOM	FRESH WATER CAPACITY (GALS.)	GREY WASTE WATER CAPACITY (GALS.)	BLACK WASTE WATER CAPACITY (GALS.)
40DRQ	32,400	42,400	12,400	20,000	—	266"	40' 9"	12' 8"	101"	84"	81	60	60
40SKT	32,400	42,400	12,400	20,000	—	266"	40' 9"	12' 8"	101"	84"	81	60	60
42DLQ	44,320	54,320	14,320	20,000	10,000	272"	43' 1"	12' 10"	101"	84"	81	60	60
42RBQ	44,320	54,320	14,320	20,000	10,000	272"	43' 1"	12' 10"	101"	84"	81	60	60

STANDARDS AND OPTIONS

STANDARD BATHROOM EQUIPMENT

- 2-panel residential-style solid hardwood passage doors
- 16" x 16" porcelain tile floor with 4" inlays
- 120V G.F.C.I. protected receptacle
- Bathroom power vent
- DuPont Corian solid surface countertops with integrated sink
- One-piece radius fiberglass shower with integrated seat
- Overhead cabinet above stool
- Residential medicine cabinet with mirror
- Satin nickel fixtures
- Skylight in shower
- Theford Aria porcelain stool with push-button flush
- Toilet paper holder
- Towel holder and ring
- Vanity light fixture
- Window in commode area

STANDARD BEDROOM EQUIPMENT

- 26" LCD HDTV
- All-in-one home theatre remote
- Decorative headboard
- Halogen satin nickel reading lights
- Home theater system, Dolby Digital 5.1 Surround Sound with DVD
- Large cedar-lined wardrobe
- Queen bed with pillowtop mattress (60" x 80")
- Quilted bedspread with 2 pillow shams

STANDARD KITCHEN EQUIPMENT

- 16" x 16" porcelain tile floor in kitchen with 4" inlays
- 120V G.F.C.I. protected receptacle
- Amana recessed, sealed 3-burner range
- Amana 1.6 cu. ft. convection microwave oven with carousel
- DuPont Corian bi-fold, recessed cover for stove
- DuPont Corian sink covers (2)
- DuPont Corian solid surface countertops with integrated sink
- High-rise single-lever faucet with pull-out sprayer
- Mini-blind
- Norcold 12 cu. ft. 4-door refrigerator with ice maker
- Porcelain tile backsplash with inlays
- Silverware drawer, divided for utensils
- Slideout dinette table with (2) comfort chairs and (2) folding chairs (40DRQ, 40SKT)
- Under-sink, sink cover storage compartment

DRIVER COMPARTMENT AMENITIES

- 3-point, lap and shoulder safety belts integrated into driver and passenger seats
- 12V auxiliary in-dash receptacle (2)
- 16" x 16" porcelain tile in driver compartment with 4" inlays
- A/C/heater vents by foot pedals
- Adjustable foot pedal
- Battery boost switch
- Chassis battery disconnect
- Color back-up camera and monitor
- Color-coordinated carpeted floor mats
- Cruise control (SmartWheel controlled)
- Fog lights
- Freightliner Message Center with LCD display featuring: odometer, tachometer, instantaneous fuel economy, fuel remaining, outside air temp., coolant temp., engine oil temp. and pressure, transmission temp., turbo boost pressure and air pressure
- High-output dash heater and A/C
- In-dash compass and exterior temperature gauge
- Intermittent windshield wipers, single motor (SmartWheel controlled)

- Powered front sun visors and privacy shade
- Powered stepwell cover with pinch resistance technology
- Powered Ultraleather driver and passenger seat
- Push button shift control
- Side cameras with turn signals
- SmartWheel steering with integrated controls for systems
- Storage compartment(s) beside passenger seat
- Overhead cabinet above stool
- Side sun visors and privacy shade
- Touch-screen AM/FM/CD/DVD with GPS navigation and Bluetooth
- Tilt and telescoping steering
- Touch control for hydraulic automatic leveling jack system
- Ultra-Vision one-piece wrap-around tinted windshield

STANDARD CHASSIS EQUIPMENT

- 2 chassis batteries
- 4.63 rear axle ratio
- 55-degree turning radius
- 100-gal. fuel tank (dual fill)
- 170-amp alternator
- 1,000-watt in-block engine heater
- 10,000-lb. hitch with 7-pin plug
- 50,000 PSI frame rail
- Allison 3000 MH 6-speed shift pad electronic transmission
- All-wheel ABS brakes
- Automatic heated moisture ejectors
- Bendix Air Disc front brakes
- Cummins ISL turbocharged 400 HP engine 1,250-lb. ft. torque at 1,400 RPM
- Daytime running lights
- Freightliner XCR Series chassis (40DRQ, 40SKT)
- Freightliner XCR Series tag axle (42DLQ, 42RBQ)
- Front axle I-beam wide track
- Michelin 275/80R 22.5" radial tires
- Leather wrapped steering wheel
- Neway air suspension
- Polished aluminum wheels
- Raised rail for maximum storage
- Rear axle, 20,000-lb. rated
- Rear-mounted radiator with fan clutch
- Remote air fill with air hose
- Sachs shocks
- Tag axle, 10,000-lb. rated (42DLQ, 42RBQ)
- Two-stage Jake brakes

STANDARD CONSTRUCTION FEATURES

- 5/8" plywood main floor decking
- 2-3/4" welded tubular-aluminum sidewall construction
- 2" x 4" floor trusses
- 3M front protective film mask
- 4-1/2" arched aluminum truss roof (R-19)
- Aluma-Tru Superstructure construction on 16" centers
- Cabinetry crafted with screwed hardwood stile construction
- Deluxe hidden cabinet hinges
- Electric-powered slideout
- Enclosed, insulated and heated floor and underbelly (R-14)
- Frameless flush-mounted slideout rooms
- Fully decked roof with 3/8" plywood
- Insulation package, floor (R-14), roof (R-19), sidewalls (R-10)
- One-piece fiberglass roof
- Reli-torq slideout system
- Sidewalls bolted to frame
- Smooth gel-coat fiberglass exterior walls
- Steel reinforced front cap and windshield frame
- V-Flex rear chassis support
- X-Bridge frames engineered into chassis

STANDARD EXTERIOR EQUIPMENT

- 120V G.F.C.I.-protected exterior receptacle
- Aerodynamic front cap
- Carefree armored power entrance door awning
- Carefree armored slideout awnings
- Carefree Eclipse awning with polyweave fabric, aluminum armor and wind sensor
- CB antenna
- Chrome, heated, remote control, side-view mirrors
- Docking lights
- Door for dump valve access
- Driving lamps
- Electric-powered, double entrance step
- Entry door with Sur-Seal air lock
- Frameless dual-pane tinted safety-glass windows
- Full-body premium paint package
- Full-width rear mudflap
- Hadley air horns
- Hydraulic automatic leveling jacks (dual positive)
- Keyless entry key fob and keypad system
- Lighted heavy-duty grab handle
- One-piece pass-through storage compartments
- Patio light with inside switch
- Rear-molded fiberglass cap with integrated rear intake
- Roof ladder
- Security lights (2)
- Side-hinged baggage doors
- Sliding battery tray (2 positions)
- Uni-Dock exterior utility center, heated and enclosed with second system monitor panel

STANDARD INTERIOR EQUIPMENT

- 2-panel residential-style solid hardwood passage doors throughout
- 16" x 16" porcelain tile floor with 4" inlays
- 40" LCD HDTV in living area
- Aire-Secure travel locks for all passage doors
- All-in-one home theater remote
- Ball bearing drawer guides 75-lb. capacity with full-drawer extension
- Cable TV hookup with RG6 coax
- Ceiling mirror feature
- Central vacuum system
- Crank-up HDTV antenna with signal booster
- Decorative satin nickel lighting throughout
- Decorative pillows for comfort lounge and hide-a-bed
- Decorative trim package
- Distressed Ultraleather hide-a-bed sofa
- Distressed Ultraleather comfort lounge
- Fabric and wood-covered box valances with lambrequin legs
- Glazed Maple solid hardwood cabinetry and miter-cornered raised-panel doors throughout
- Hardwood cabinets
- Hardwood fascia boards
- High-intensity halogen recessed 12V lighting package
- Home theater system, Dolby Digital 5.1 Surround Sound with DVD
- Lights at entrance steps
- Padded vinyl ceiling throughout
- Phone jack
- Pleated day/night shades throughout
- Prep for satellite dish for roof
- Prep for washer and dryer
- Residential-style trim and molding

HEAT, POWER AND WATER EQUIPMENT

- 5-watt solar panel (for chassis batteries)
- 12-gal. gas/electric DSI auto-ignition water heater
- 12V demand water pump
- Carefree armored slideout awnings
- 50-gal. propane gas tank, chassis-mounted
- 50-amp electric service
- 50-amp quick-connect power cord with electric reel
- 2,000-watt inverter with 4-6V batteries
- Docking lights
- Black holding tank sprayer
- Conveniently placed water pump switches
- Dual 15,000-BTU low-profile central A/Cs with heat pump, digital thermostat, Chillgrille and drain tubes
- Dual insulated ceiling air ducts with adjustable air vents
- Holding and fresh water tanks, radiant-heated
- Hookup for city water
- Onan 8,000-watt diesel generator with auto-changeover on sliding tray
- Onan auto generator and temperature start system
- Outside shower
- Systems monitor panel
- Water heater bypass system
- Water purifier with faucet and ice maker
- Winterizing kit

STANDARD SAFETY EQUIPMENT

- Deadbolt lock on entrance door
- Egress window
- Fire extinguisher
- Lap safety belts in living area
- Propane alarm
- Security system
- Smoke alarm
- Third brake light

OPTIONS

- 22" oven
- 26" LCD HDTV, front overhead
- 3rd 15,000-BTU A/C with heat pump and 10,000-watt generator (42DLQ, 42RBQ)
- Aqua-Hot 375-LP hydronic water and heating system
- Electric power cord reel
- Exterior 32" LCD HDTV with CD/DVD player and speakers
- Fireplace (42DLQ, 42RBQ)
- Free-standing table with 4 chairs and sofa (42DLQ, 42RBQ)
- King pillowtop mattress (n/a on 40SKT)
- King Select Comfort air mattress (n/a on 40SKT)
- Multiplex lighting
- Polar Pack insulation package with reflective Flexfoil (R-33 in floor, R-24 in roof, R-16 in wall)
- Power auto rewind water hose power
- Residential refrigerator with ice maker and 2800 sine wave inverter and 4 batteries
- Queen Select Comfort air mattress
- Sirius radio and tuner
- Slideout cargo tray
- Stackable washer and dryer
- Window awning(s)
- Winegard in-motion dome satellite dish
- Winegard semi automatic dome satellite dish



**ENTEGR A**  
COACH®

A reputation for integrity isn't built overnight. It happens only after years of doing what you say you will do—and by practicing the Golden Rule.

Over the last 40 years, the Bontrager family has worked hard to establish a reputation of integrity in the RV business. Through ups and downs, successes and failures, these four decades have taught us the importance of doing our best to meet our customers' expectations. And that is why we are excited to introduce the finest line of RVs we have ever built—the motor coaches from Entegra Coach.

We believe Entegra Coach captures everything we stand for, from its structural quality and old-world craftsmanship, to unmatched customer service. We hope you'll take some time with your local dealer to understand why our family stands so strongly behind Entegra Coach.

*Without compromise.*

## 2-YEAR WARRANTY (5-YEAR STRUCTURAL)

Our family is proud to stand behind every Entegra Coach we build. That's why we back our motor coaches with a manufacturer's limited warranty, warranted to the original purchaser for two years (five years structural) from the original date of purchase or 24,000 miles of use, whichever comes first, against defects in materials and workmanship. Our commitment is to provide you with the highest level of products and services possible. We invite you to compare us with other manufacturers—we think you'll find that our passion for your satisfaction is unmatched. For a copy of the limited warranty with full terms and conditions, ask your local Entegra Coach dealer.

## 3-YEAR PLATINUM-LEVEL ROADSIDE ASSISTANCE

Travel worry-free in your Aspire motor coach with the Entegra Coach Customer First Roadside Assistance program, yours at no cost during your first three years of ownership. This program is offered through Coach-Net, the largest RV emergency road service in the country and gives you immediate access to dependable roadside assistance and support services with a simple phone call.

- Free jump starts
- Free tire changes
- Free fuel delivery
- Free lockout service
- Free travelers checks
- Toll-free nationwide service appointment assistance
- 24-hour toll-free emergency message service
- Free custom trip routing and full-color map service
- Free dispatch of on-site mechanical service
- \$2,000 trip-interruption reimbursement
- RV technical assistance hotline
- Free towing to nearest qualified service

YOUR ENTEGRA COACH DEALER



**GROSS VEHICLE WEIGHT RATING (GVWR):** The maximum permissible weight of the motor coach, including the Unloaded Vehicle Weight (UVW) plus passengers, personal items, all cargo, fluids, options and dealer-installed accessories. The GVWR is equal to or greater than the sum of the UVW and the Cargo Carrying Capacity.

**GROSS AXLE WEIGHT RATING (GAWR):** The maximum allowable weight each axle assembly is designed to carry, as measured at the tires, therefore including the weight of the axle assembly itself.

**GROSS COMBINED WEIGHT RATING (GCWR):** The maximum allowable combined weight of the motor coach used as a tow vehicle and the attached towed vehicle.

It is important for your safety and enjoyment that you are aware of the weights and tow ratings of the RV you select. Consult a competent advisor for questions or advice. Whether you are new to RVing or a veteran, get a feel for the performance of your RV before heading out on the roadways. When you tow a vehicle with your RV, you must drive differently than when you drive a single vehicle. Practice hooking up, driving, backing up and braking in a safe environment or seek out professional instruction. Entegra Coach affixes a weight label to each RV which lists weight information for that vehicle. Refer to that label to verify the vehicle will meet your requirements. See specifications chart inside.

See dealer for further information and prices. All information in this brochure is the latest available at the time of publication approval. Entegra Coach reserves the right to make changes and to discontinue models without notice or obligation. Photos in this brochure may show optional equipment and props for photography purposes. RVs built for sale in Canada may differ to conform to Canadian codes. ©2010 Entegra Coach, Inc. 11-ASPR-PL0910-15K Printed in U.S.A.

Entegra Coach, Inc., P.O. Box 460, Middlebury, IN 46540 | [www.entegracoach.com](http://www.entegracoach.com)