

2012 HAWAII MATHCOUNTS® COMPETITION RESULTS

Washington Middle School math team took first place in the 2012 MATHCOUNTS® 29th Hawaii State Competition on March 3, 2012 held at Iolani School. A week earlier Washington also placed first at the MATHCOUNTS® Oahu Chapter Competition when they competed against 24 Oahu schools. This makes it two in a row for Washington, which placed first in 2011 State Competition, and second in 2010. As a result of its first place finish, Washington Coach Sung Park will be the Hawaii team's coach at the National Competition on May 11, 2012 at Walt Disney World's Swan and Dolphin Resort in Orlando, Florida.

Accompanying Park are team members David Chang and Jion Kato of Washington Middle, Mark Klein of Punahou, and Jesse Doan of Seabury Hall. These Mathletes earn the rights to represent Hawaii as a result of their first to fourth place finish in the Countdown Round of the competition. This Round pits the eight highest scorers in the written Sprint and Target Rounds in a head to head competition. Jion Kato took first in the written portion with David Chang second, Jesse Doan third, and Mark Klein fourth.

Washington beat Waiakea Intermediate (second), Punahou (third), Iolani (fourth), Kaimuki Middle (fifth), Seabury Hall (sixth), Niu Valley (seventh), and Highlands Intermediate (eighth). The week before at the Oahu Chapter Competition Washington beat Punahou (second), Iolani (third), Kaimuki (fourth), Highlands (fifth), and Niu Valley (sixth).

Award presenters taking time for this very worthy event included Dr. Carey Inouye, Dean of Instruction, Iolani School; Dewey Gottlieb, Department of Education; Lynne Unemori, Vice-President of Corporate Relations for Hawaiian Electric; Brian Bowers of Bowers and Kubota; and Kurt Kunimune, President, Hawaii Society of Professional Engineers (HSPE).

MATHCOUNTS® is a national math enrichment, coaching and competition program that promotes middle school mathematics achievement in every U.S. state and territory, and is one of the most successful education partnership involving volunteers, educators, industry sponsors and students in America. The competition is opened to 6th, 7th and 8th graders, and the participants are known as Mathletes.

The competitions begin with the Sprint Round, followed by the Target, Team, and Countdown Rounds. The Sprint Round has individual Mathletes answering 30 difficult problems in 40 minutes. The Target Round has 8 problems in pairs of two with 6 minutes per pair to complete. The Team Round has 10

problems where teams of four Mathletes have 20 minutes to come up with the answers, and finally, the Countdown Round in a round robin arrangement is conducted with the 8 - 12 highest individual scorers from the Sprint and Target Rounds. Countdown Round spectators are usually amazed by the brilliance of these Mathletes. The competitions require many dedicated volunteers including proctors and scorers.

MATHCOUNTS® is also an Engineering event. It is held around Engineers Week. HSPE sponsors it. Engineering organizations such as ASME have members on the Hawaii MATHCOUNTS® Steering Committee and provides proctors and scorers for the competition with

the help of ASCE YMF, SAME, the US Army Corps of Engineers (USACE), and Hawaiian Electric Co., Inc. (HECO) volunteers. Engineering firms such as SSFM International also help with the competition proctoring and scoring.

HSPE organizes Hawaii MATHCOUNTS® with assistance from a steering committee comprised of engineers and educators. HSPE Co-Chairmen for Hawaii MATHCOUNTS® are Kurt Kunimune of Bowers and Kubota and Barry Nakamoto of HECO, and assisted by Nathan Yuen of HECO. Hawaiian Electric Company has been a proud supporter of the competitions since 1984.





Published monthly by:

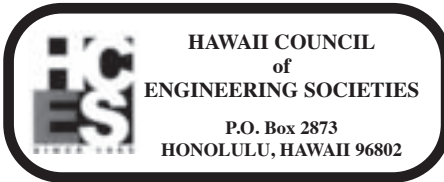
HAWAII COUNCIL OF ENGINEERING SOCIETIES

SERVICE PRINTERS, INC.

1829 Dillingham Boulevard • Honolulu, HI 96819
 Telephone: (808) 841-7644 • Fax: (808) 847-1487
 ADDRESS ARTICLES FOR PUBLICATION TO:
 WARREN YAMAMOTO
 1526-C Pukele Avenue • Honolulu, HI 96816
 Telephone: 768-3725

WILIKI MAILING LIST

Additions and/or corrections to the Wiliki mailing list should indicate the proper society, institution or association. Corrections to email addresses should be submitted to your society coordinator.

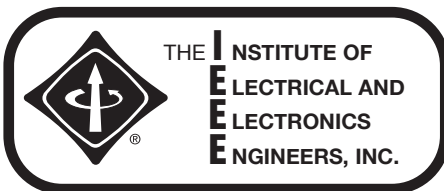


HOME PAGE: <http://hces.us>

2011-2012 OFFICERS

Chair: Joseph Ting
 Vice Chair: Jeffrey Cudiamat
 Secretary: Grant Torigoe
 Treasurer: Samuel Dannaway

SOC	Representative	Alternate
AACE	T. Taam	
ACECH	K. Hayashida	
APWA	J. Lamar	
ASCE	D. Barsana	R. Babcock
ASHRAE	D. Borges	
ASME	D. Kam	J. Ahern
EAH	A. Erickson	
EWBH	W. Wong	
FALEA	S. Agraan	E. Pineda
HSPE	J. Dubois	K. Kunimine
IEEE	G. Torigoe	
ITE	W. Yamamoto	
SAME	B. Zachmeier	
SEAOH	L. Moran	
SFPE	S. Dannaway	
SWE	L. Thompson	
UH(assoc)	S.K. Choi	



IEEE Hawaii Section

2010-11 Hawaii Section Officers

Section Chair: John Camery
john.camery@gmail.com
 Vice-Chair: Chris Russell
 Treasurer: Marjorie Pearson
marjorie.pearson@twtelecom.com
 Secretary: Grant Torigoe
Grant.Torigoe@hawaiiantel.com



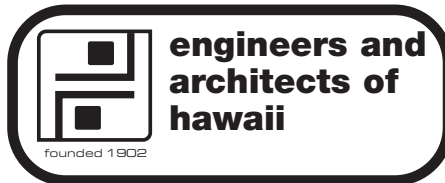
Po Box 12204 Honolulu, HI 96828
 Website: www.eaauh.org

2011-2012 OFFICERS AND DIRECTORS

Kyle Y. Yukumoto, President
 Glenn M. Nohara, Vice-President
 Dayna E. Nemoto, Treasurer
 Matthew K. Fujioka, Past President
 Ronald N.S. Ho, Board Chair
 Bob Y. Akinaka, Director
 Ken K. Hayashida, Director
 John H. Katahira, Director
 Diane Y. Kodama, Director
 Lloyd P.C.W. Lee, Director
 Mike Y. Magaaoay, Director
 Neal N. Miyake, Director
 Derek K. Mukai, Director
 Martin A. Nakasone, Director
 Ross S. Okuda, Director
 Anthony J. Paresa, Jr., Director
 Wayne A. Shiroma, Director
 Reid H. Shizumura, Director
 Jonathan M. Suzuki, Director
 Dennis I. Toba, Director
 Keith S. Uemura, Director
 Edward I. Yoshimura, Director
 Russell Young, Director

Upcoming Event:

The 12th Annual College of Engineering Dinner will be held on April 26, 2012 at the Hilton Hawaiian Village Coral Ballroom. Distinguished Engineering Alumni who will be recognized at this dinner are Kazu Hayashida, Edward Y. Hirata, and Wallace S. Miyahira. Dennis I. Hirota will also be recognized for his outstanding service to the College of Engineering. For additional information, call (808)956-5112 or refer to our 2012 events page at <http://www.eng.hawaii.edu/college-events/2012-events/>.



po box 4353, Honolulu, Hawaii 96813
 An association for Hawaii's Engineers and Architects
 WEB address: <http://eahawaii.googlepages.com/home>

EAH 2010- 2011 Officers

President	Aaron Erickson	591-2728
2nd VP	Howard Wiig	587-3811
1st VP	Geoffrey Paterson	261-6597
Treasurer	Tit Mun Chun	
Secretary	Gary Yamamoto	485-2777
Director	Dave Martin	543-4504
Director	Travis Hylton	
Director	Andy Keane	531-3017
Past Pres.	C. S. Papacostas	956-6538

EAH's new meeting location is at the Mango Grill in the Topa Tower (Ewa tower on Fort Street) in the Topa Financial Center (Old AMFAC Bldg). Parking is available (enter from Nimitz). The WEB site has been updated to provide directions and a Map. If you have questions please call Sam Gillie (543-4739).

Meetings are held every Friday (except Holidays).

Meetings start at NOON and have ended PROMPTLY at 1:00 pm for 70 Years.

Program schedule may be adjusted, call Sam Gillie to confirm speaker 543-4739 Fax 203-1335.

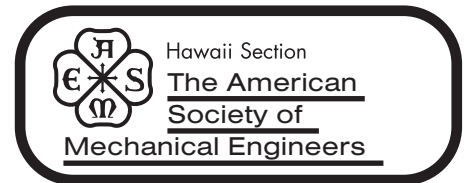
\$10.00 Members, \$12.00 Guest (All Welcome), Students Free, Bring Your Own Lunches Welcome, Drink Refreshments are complimentary. A \$2.00 donation is very gratefully appreciated!!



P.O. Box 88840
 Honolulu, HI 96830
 Website: www.acechawaii.org

Officers for 2011-12

President:	Douglas Lee, PE	523-8499
Pres. Elect:	Terrance Arashiro, PE	533-3646
Treasurer:	Mike Street, PE	836-7787
Secretary:	Beverly Ishii-Nakayama, PE	942-9100
Past Pres.:	Sheryl Nojima, P.E., Ph.D.	521-0306
Nat. Dir.:	John Katahira, PE	596-7790
Directors:	Joel Yuen, PE	521-3773
	Robin Lim, PE	841-5064
	William H.Q. Bow, P.E.	941-8853
Exec. Dir.:	Ginny Wright	741-4772
	Email gwright@acechawaii.org	



Website: <http://sections.asme.org/hawaii>

ASME-HI 2010-2011 Officers

Chairperson	Derek Sato	543-4108
	derek.sato@heco.com	
Vice-Chair	Derick Kam	848-6966
	kam@thermaleng.com	
Secretary	Kory Ikeda	
	kory.isamu@gmail.com	
Treasurer	Kevin Dang	737-1708
	dangk001@hawaii.rr.com	
Past-Chair	Edmund Chang	543-4227
	change025@hawaii.rr.com	
HCES Rep:	Derick Kam	
Alternate:	John Ahern	



Officers SY 2011-2012

President	Paul Scott	Engineered Systems Inc.
Pres-Elect	Kevin Saito	Trane Co.
Vice Pres	Barry Jim On	Insynergy Engineering
Secretary	Blake Araki	U of Hawaii Facilities
Treasurer	Donna Kishi	Power Products

Board of Governors

Past Pres	Michael Chang	Hawaii Energy
	Alayna Shima	Katayama & Assoc.
	Moffazzal Mir	Insynergy Engineering
	Scott LeBeau	DMG Hawaii
	Bill Lee	Coffman Engineers



WEB SITE www.eng.hawaii.edu/~hspe

2011-2012 Officers and Directors

President: Kurt Kunimune, P.E.
kkunimune@bowersandkubota.com
 Pres. Elect: Manny Lanuevo, P.E.
mannylanuevo@rocketmail.com
 Vice Pres.: Joelle Buboiss, P.E.
jbuboiss@bowersandkubota.com
 Secretary: Marc Botticelli, P.E.
mbotticelli@wrsa.biz
 Treasurer: Nathan Yuen, P.E.
Nathan.yuen@heco.com
 Past Pres.: Majella Stevenson, P.E.
majella.stevenson@navy.mil

Chapter Directors:

Oahu: vacant
 Maui: Darren Okimoto, P.E.
dokimoto@wsue.com
 Big Island: Galen Kuba, P.E.
gmkuba@hawaii.rr.com
 Kona-Kohala: Kevin Murar
kmurar@murarengineering.com

On February 23, 2012 Curtis Beck, P.E., long-time member of the Big Island chapter of HSPE, put on an ethics webinar for the American Industrial Hygiene Association (AIHA) and the American Society of Safety Engineers (ASSE). Curt, who has served on NSPE's Board of Ethical Review since 2008, was one of four speakers who presented at a joint seminar by AIHA and ASSE on "Professional Ethics and Responsibility" at the Hale Ikena Club House, Ft. Shafter. The others were Jennifer Shishido, Bob McEldowney, and Craig Shoji.

In his webinar, broadcast remotely from Hilo, Curt provided an overview of professional ethics as it relates to the practice of professional engineering. A key framework of professional engineering ethics is the NSPE Code of Ethics for Engineers, which holds as one of its fundamental canons the following: "Engineers, in the fulfillment of their professional duties, shall conduct themselves honorably, responsibly, ethically, and lawfully so as to enhance the honor, reputation, and usefulness of the profession."

The use of the Code of Ethics was illustrated through a discussion of hypothetical ethical situations involving engineers in the practice of their profession. These cases represent a sample of those deliberated annually by the Board of Ethical Review, which renders their analysis and judgment of the cases based on the tenets of the Code.

In one, an engineer who accepted an advance payment for services that were never performed, was found to be unethical for refusing to return the payment because in the verbal agreement the engineer had with his client, the engineer failed to signal his intent that the advance would not be refundable.

In another case, it was found that it would be unethical for an engineer in responsible charge of a building renovation design to review and stamp a subcontractor's plans for a roofing curb to be installed in the renovation project. These and other cases can be found on the Board of Ethical Review site on the NSPE website, www.nspe.org.

HSPE is still gearing up for its 2012 golf tournament. Our tournament is the primary fundraising vehicle for the Hawaii Mathcounts competition. This year, our tournament will be held at the Hickam Mamala Bay Golf Course on June 29 (Friday), 2012. Please keep the date open, and please be on the lookout for our e-mail and mailed notices, and updates in the Wiliki. We are excited to have the tournament at a new venue and promise to have great and better prizes for this year's tournament. If you should have any questions, please contact Kurt Kunimune at 479-0767. Mahalo!



2012 Officers

President	Joanne Hiramatsu	954-4262
	<i>jhiramatsu@oceanit.com</i>	
Vice-Pres	Jeffrey S. Cudiamat, P.E.	488-5000
	<i>engineer@structuralhawaii.com</i>	
Treasurer	Ken C. Kawahara, P.E.	836-1900
	<i>kck@akinaka.com</i>	
Secretary	Tyler Sugihara, P.E.	768-3600
	<i>tsugihara@honolulu.gov</i>	
Past Pres	Jason H. Lau, P.E.	596-7790
	<i>jason@tlcghawaii.com</i>	

A general membership meeting was held on March 7, 2012 at Maple Garden Restaurant. The speaker was Jon M. Young, Executive Director of Hawaii Asphalt Paving Industry

(HAPI). Mr. Young's presentation provided a brief background of HAPI and its members, an overview of projects currently in progress, and the services that HAPI provides to the community. The 2012 Officers were also installed.

The annual Education Fund Golf Tournament will be held Friday, May 11, 2012, at the Ala Wai Golf Course. Proceeds will sustain the Chapter's education fund which provides annual monetary awards at the Hawaii State Science and Engineering Fair and annual partial scholarships for university tuition to eligible high school students who intend to major in the engineering field.



2012 Officers left to right – Jason Lau, Joanne Hiramatsu, Jeffrey Cudiamat, Ken Kawahara, Tyler Sugihara, John Lamer.

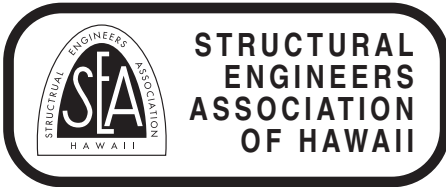
**Deadline for
 Wiliki
 is May 15th**

TILECO INC.

We Help to Build Hawaii

ph. **682-5737**
www.tilecoinc.com

CONCRETE BLOCKS & BRICKS
CEMENT • MORTAR • SAND • REBAR • KEYSTONE RETAINING WALL PRODUCTS



PO BOX 3348, HONOLULU, HI 96801
Web Page URL <http://www.seaoh.org>

2012 BOD OFFICERS & DIRECTORS

Position	Officer	Phone
President	Wesley Segawa <i>hilo@wrsa.biz</i>	935-4677
Vice President	Brian Kung <i>brian@mkellc.com</i>	488-7579
Secretary	John Uno <i>juno@consultingstructuralhawaii.com</i>	945-0198
Treasurer	Marvin Mestanza <i>mmestanza@wilsonokamoto.com</i>	946-2277
Director	Aaron Erickson <i>aerickson@wje.com</i>	591-2728
Director	Linda Moran <i>lmoran@hawaii.rr.com</i>	676-1963
Director	Alison Agapay <i>aagapay@hdcc.com</i>	216-3195
Director	Tim Goshi <i>tgoshi@kaihawaii.com</i>	791-3966
Past President	Brian Ide <i>brianide@allisonide.com</i>	536-2108

HIGHLIGHTS OF BOD MEETING

March 7, 2012

Committee Reports:

General Membership Meetings/Technical Seminars/Events:

- Simpson Strong-Tie 2012 Product Line Workshop is scheduled for April 24 & 25, 2012 at the BIA CTA Training Center.
- Joint ASCE-SEAOH meeting will be rescheduled for May 17 2012, location to be determined.

The following seminars are anticipated to be presented in 2012:

- ACI 318 Code Seminar
- Masonry Code Seminar
- AISC Handbook Seminar

2012 SEAOH Annual Convention Update:

This year's Annual Convention will be a Joint SEAOH/CCPI event and is tentatively scheduled for October 19 & 20, 2012 at Turtle Bay Resort. A full day technical seminar is scheduled for October 19. A morning technical seminar, afternoon golf tournament & simultaneous non-golfing event, and an evening banquet are scheduled for October 20. Topics for the seminars will focus on restoring our infrastructure. More information will be announced in the upcoming months.

Other Business:

SEAOH provided testimony opposing both House Bill 2358 HD1 Relating to the Building Code and House Bill 2434 Relating to the State Building Code.

New Member Applications:

- The Board voted and unanimously approved Howard Kurio for the status of Life Member.
- Membership applications from Gary Iwamoto, Kathleen Jakubowski, and Henry Rixey were unanimously approved.
- New member application from Brandon Erickson at Erickson Structural Consulting Engineers for the grade of Member was received and is open for comments from the membership. The application will be voted on at the April 2012 board meeting. Please notify any SEAOH officer prior to the April 2012 board meeting if you wish to comment on this prospective member.

Missing Members:

Please contact Membership Chairperson, Jiabao Chen (Ph: 791-3945 or email jchen@kaihawaii.com), or any of the SEAOH Officers if you have a new mailing and/or email address.

The next SEAOH Board of Directors and Officers meeting will be held on Wednesday, April 4, 2012. Contact SEAOH President Wes Segawa (965-4677, hilo@wrsa.biz) for more information.



2011-2012 OFFICERS

Office	Name	Phone
President	Dawn Barsana-Szewczyk <i>email: dawn.b.szewczyk@gmail.com</i>	943-1133
Pres-Elect	Ian Arakaki <i>email: ian@tlcgawaii.com</i>	596-7790
Vice-President	Brian Enomoto <i>email: benomoto@ascehawaii.org</i>	388-5559
Secretary	Glenn Miyasato <i>email: glenn@mkellc.com</i>	488-7579
Treasurer	Benjamin Rasa <i>email: brasa@beltcollins.com</i>	521-5361
Past President	Roger Babcock <i>email: rbabcock@hawaii.edu</i>	956-7298

APRIL DINNER MEETING

Program: University of Hawaii ASCE Student Chapter

1. The ASCE Student Chapter will summarize its accomplishments for 2011-2012 including highlights from this year's ASCE Pacific Southwest Regional Conference.
2. Student Chapter Service Awards.

Date: Thursday, April 19, 2012

Location: Treetops at Paradise Park, Manoa Valley

Time: 5:30 p.m. - Social Time

6:30 p.m. - Dinner

7:00 p.m. - Program

8:45 p.m. - Adjourn

Menu: Multi-entree buffet

Cost: \$25.00 for ASCE Hawaii Section members

\$28.00 for Non-ASCE Hawaii Section members and Guests
\$11.00 for UH Manoa Student Chapter members

Please make checks payable to ASCE-Hawaii Section and mail to Ben Rasa, ASCE Hawaii Section Treasurer, Belt Collins Hawaii Ltd., 2153 North King Street, Suite 200, Honolulu, Hawaii 96819, postmarked by Friday, April 13, 2012. Reservations for the dinner meeting to Ben Rasa by Monday, April 16, 2012, by phone at 521-5361 or email at brasa@beltcollins.com.

EXECUTIVE COMMITTEE MEETING

Last held: March 9, 2012

Next meeting: April 11, 2012

DONATIONS BY THE SECTION

The Hawaii Section recently made donations in support of the University of Hawaii ASCE Student Chapter.

ASCE SECTION SCHOLARSHIP APPLICANTS NEEDED

Applications are now being accepted for the

2011 Walter Lum Student Scholarship. The Section anticipates distributing up to a total of two awards of \$3,000 each. Applicants must be juniors or seniors at the University of Hawaii majoring in Civil Engineering. If you qualify or know someone that does, application forms can be obtained from the ASCE Hawaii Section website at www.ascehawaii.org or from the University of Hawaii Civil and Environmental Engineering Department at Holmes Hall Room 383. If you have any questions, please contact Roger Babcock at 956-7298, or rbabcock@hawaii.edu.

CONTINUING EDUCATION

ASCE National holds more than 275 seminars and computer workshops each year on a wide variety of technical, management, and regulatory topics. These seminars are held in more than 45 cities across the U.S. In addition, ASCE offers customized on-site training and many distance learning programs, including live interactive web/teleconference seminars, online courses and courses on CD, videotape, and audiotape. Please visit www.asce.org/continued/ for complete details.

ASCE HAWAII SECTION STUDENT SCHOLARSHIPS

Please help us increase our scholarship endowment so that we can recognize deserving students. We continue to accept tax-deductible donations with the goal of increasing the annual scholarships. Make your check

continued on page 6



SWE - Hawaiian Islands Section
P.O. Box 61728 • Honolulu, HI 96839
swe.hisection@gmail.com

Executive Committee:

President: Pearl Yamaguchi of Medtronic
Vice Pres.: Carrie Leonard of BAE Systems
Secretary: Rena Chock of HECO
Treasurer: Alyssa "Sunshine" Smith of CH2M HILL
Charter Sec. Rep.: Amy Weintraub of Women in Technology, isisHawaii
Alt. Charter Sec. Rep.: Cody Aihara of Nagamine Ogawa Engineers Inc.



Engineers Without Borders - Honolulu
<http://www.ewbaloha.org>

Officers

President	Natalie Waters	
Vice Pres	Wesley Wong <i>Wesley.wong@ch2m.com</i>	440-0217
Secretary	Alyssa Smith	
Treasurer	Brannon Pang	



- **Picket and Glass Systems, Windwalls**
- **Custom Designs, Colors and Engineering for Your Rail System**
- **Corrosion Protection with AAMA 2605 Certification**
- **Concrete Repair, Waterproofing**



STRUCTURAL SYSTEMS, INC.
General Engineering

License # AC-13555

Sand Island Industrial Park • P.O. Box 30296

Honolulu, Hawaii 96820

Telephone: 808-845-2474 • Email: structurs001@hawaii.rr.com

KNOW YOUR ASCE HISTORY

by C.S. Papacostas

THE LAST STREETCAR

Mentioned in last month's article was the fact that the YWCA sold its Fernhurst property at the northwest corner of Alapai and King Streets to the Honolulu Rapid Transit (HRT) company and then moved to the Makiki District in 1952.

Consistently with numerous citations on the subject, Bernard W. Stern says "HRT, originally known as Honolulu Rapid Transit and Land Company, officially came into being on July 6, 1898, the same day on which Hawai'i was annexed to the United States. On that day both houses of the Hawai'i legislature approved the company's request for a franchise to operate an electric railway system in Honolulu. Final approval of the franchise was voted on June 25, 1900, when the United States Congress enacted the Organic Act, which validated all franchises granted after July 7, 1898. The first electric streetcar in the islands ran on August 31, 1901 [see "Rutledge Unionism," University of Hawaii Press, 1986]."

The electric streetcar company out-competed the older Hawaiian Tramways, Ltd., that operated a steel-wheel-on-steel track, mule-drawn tram system since 1888.

Stern continues, "The original owners and directors of HRT were mainly 'mission boys' (direct descendants of missionaries) and those related to missionary families by marriage. The original directors included Lorrin A. Thurston, publisher of the Advertiser, and W. R. Castle, a prominent attorney, both of whom had been actively engaged in the overthrow of the monarchy in 1893 and in the government of the Hawaii Republic that ruled the islands until annexation in 1898. Their heirs were part of the HRT Board until the late 1950's when an outsider, Harry Weinberg, took over control of the company."

William Richard Castle was the son of Samuel Northrup Castle who, with Amos Starr Cooke, founded the Castle and Cooke Company in 1851. It so happens that the patriarch of the Atherton family who had given the first Fernhurst property to the YWCA was Joseph Ballard Atherton who had begun his career as a clerk with Castle and Cooke after coming to Hawai'i in 1858. He married Amos' daughter Juliette Montague Cooke and rose to the presidency of the company, one of the "Big Five" firms that for all practical purposes controlled or had a major influence on the economy of Hawai'i.

So the Athertons had both kinship and professional relationships with both sides of the transaction that placed the Fernhurst property under the ownership of HRT.

The 1927 Sanborn Fire map shown below illustrates that HRT

maintained its car barn and electric power house in the lot bounded on three sides by Beretania, Alapai and South Hotel Streets, whereas the adjacent Fernhurst property (bounded by South Hotel, Alapai and South King Streets) would be a natural extension.

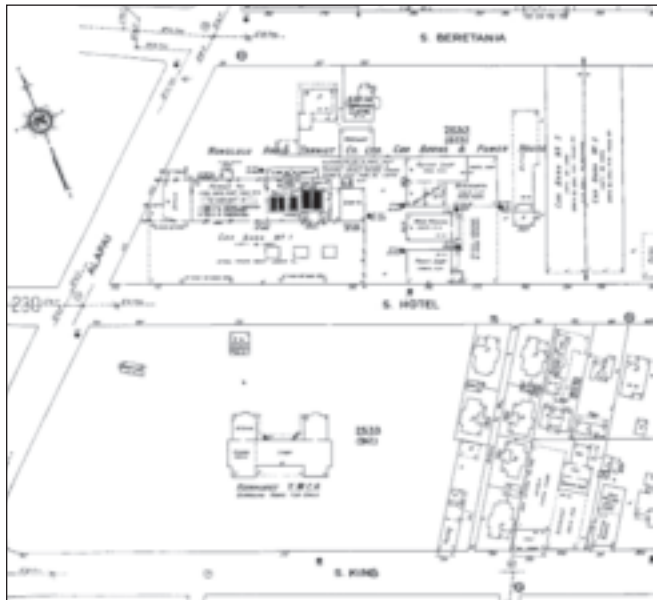
By the way, shown on the map is the footprint of the Fernhurst homestead (number 2533) as I described it last month (March 2012). The parenthetical number (912) is the designation of the structure that occupied the same location (the Atherton residence) as shown in the earlier (1914) fire map. Interestingly, what is shown as "S. HOTEL" street on the 1927 map is denoted as "YOUNG" street in the 1914 version. At that time, apparently, Hotel Street terminated at Alapai.

By the time of the sale in 1951, HRT had abandoned the operation of electric streetcars, having added motor buses to its vehicle fleet since 1925 (first gasoline and later diesel buses). A 20-year period of also running electric trolley buses lasted from 1937 until 1957, after which time no the longer needed power house was dismantled and the facility was replaced wholly with diesel bus yard operations.

Roy S. Melvin and Robert Ramsay, authors of a 1960 monograph titled "Hawaiian Tramways," describe the last electric streetcar run evocatively:

"At two o'clock on the afternoon of June 31, 1941, car 47 left the HRT carhouse. Number 47's run that day was unusual. To begin with, it was an old open car, one of those originally built about 1908. In addition, the car sported one of the largest leis ever made, which circled it completely. At the controller was George Bell, son of Jack Bell who ran HRT's first car in 1901. The car ran over the remaining rail line all afternoon and evening ... The end finally came at 1:30 a.m. on July 1, 1941."

Do you know of a civil engineering accomplishment or event that your fellow ASCE members might find interesting? Please send a brief description to C.S. Papacostas (fax 956-5014, email csp@wiliki.eng.hawaii.edu). Previous articles in the series may be found at the Section's web site. Just point your browser to <http://www.ascehawaii.org>.



ASCE, continued from page 4

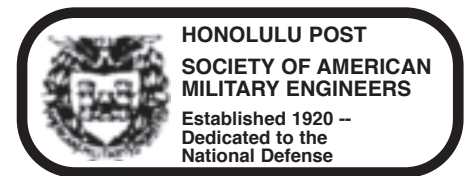
payable to 'ASCE Hawaii Section' and mail to: ASCE Scholarship Committee, P.O. Box 917, Honolulu, HI 96808. If you have any questions, please contact Roger Babcock at 956-7298, or rbabcock@hawaii.edu.

ASCE JOB LISTINGS

The following job listings are currently posted on the ASCE Hawaii Section website:

- Experienced Heavy or Civil Estimators – Hawaiian Dredging Construction Company, Inc.
- Architects, Civil Engineers, Structural Engineers, Mechanical Engineers, and Electrical Engineers – Mitsunaga & Associates
- Managing Professional Engineer – C.S.H. May Consultant
- Project Managers, Senior Civil Engineer - URS Corporation
- Transportation Engineers – CH2MHILL
- Director of Operations – SMG/Hawaii Convention Center
- Project Manager/Project Engineer – Global Business Solutions Inc.
- Deputy Program Manager – HDR
- Civil Engineer V – HDR
- Senior NEPA Project Manager – HDR
- Civil Engineer IV – HDR
- Project Manager, Remediation & Infrastructure - Cape Environmental Management Inc.
- Director, Capital Program Management – Kamehameha Schools
- Project Engineers , Maui & Kauai – Bowers and Kubota Consulting
- Civil Engineer, Technical Sales – Jensen Precast

For further information on these job listings or to find out how you can post job openings in your company on this website, please visit <http://www.ascehawaii.org/jobs.htm>.

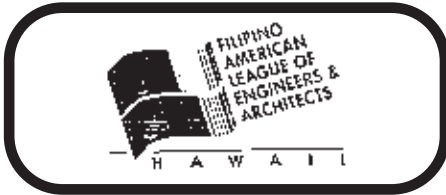


P.O. Box 31218, Honolulu, HI 96817
Web page: www.samehonolulu.org

2010-2011 Honolulu Post Officers

President	Col Mark Bednar, USAF
VP/Programs	Bryan Zachmeier, USAF (Ret)
VP/Sustaining Members	Will Boudra, PE, USN (Ret)
VP/Membership	Jerry Matsuda, PE, USAF (Ret)
Secretary	Capt David Stringer, USAF
Treasurer	LT Aaron Allison, USN
Dir at Lge, Army	LTCOL Doug Guttormsen, USA
Dir at Lge, Navy	CAPT Paul Fuligni, USN
Dir at Lge, Air Force	Col Karl Bosworth, USAF
Dir at Lge, Coast Guard	LCDR Andrew Wright, PE, USCG
Dir at Lge, Civilian	Todd Barnes, PE, USA (Ret)

**Wiliki Advertisers
Wanted**



P.O. Box 4135, Honolulu, Hawaii 96812
 Website: <http://www.falea.org>

Officers/BoDirectors' for 2010-2012

President: Elvi B. Pineda
 VP/Pres Elect: Geoffrey S. Cudiamat
 Secretary: Maritez Marquez
 Treasurer: Nicolo A. Orense
 Ass't Treas: Jojo A. Lopez
 Auditor: Eugene N. Calara
 Bus. Manager: Suzie S. Agraan
 Press Rel.Off: Joey G. Resurreccion
 Past President: John C. Ramos
 HCES Rep: Suzie S. Agraan
 Alternate: Elvi B. Pineda
 Directors: Napoleon Q. Agraan
 Ramon B. Bonoan, Jr.
 Frank Cruzata
 Vergel G. Del Rosario
 Marcelino C. Labasan
 Angelie L. Legaspi

HIGHLIGHTS/COMMITTEE REPORTS:

MEETINGS – Thanks to Jeffrey for making his company's meeting facility in Pearl City available for FALEA'S Board & Special Meetings.
PROFESSIONAL DEVELOPMENT – The Fundamentals of Engineering (FE) Review class is now on-going with 23 individuals signed up. The sessions end on Saturday, April 7, and attendees should be ready to take the National Exam scheduled the following Saturday.
MEMBERSHIP – So far we have a total of 11 new member applications approved by the Board for the FY 2011/2012. These are: William Agnir, Jr., Avelina E. Cabais, Manuel O. Cinco, Allan Clores, Wilmurf A. De Vera, Riza-Marie Gatdula, Krizelle J. Mabuti, Leonardo Marcial, Nicolo Olino, Sherri Valdez, and Arnie C. Valero. All welcome aboard!
FALEA SCHOLARSHIP GOLF TOURNAMENT – Registration deadline for our May 25th Annual Scholarship Fundraiser is **May 11, 2012**. We need more sponsors, and players. The Golf Committee will be meeting weekly until the final week of the golf tournament. **FILCOM'S FILIP-**

INA FIESTA PARADE – We will again be participating with a marching unit and Float during this annual event. This will be covered and discussed more at our next regular meeting.
NEXT BOARD MEETING – Date TBA. Location: This will be at Jeffrey's, 5:30 PM.



2011-2012 YMF Officers

President – Lara Karamatsu
lkaramatsu@ascehawaiiymf.org
 Vice President – Kurt Nagamine
knagamine@ascehawaiiymf.org
 Secretary – Jason Sugibayashi
jsugibayashi@ascehawaiiymf.org
 Treasurer – Puna Kaneakua
pkaneakua@ascehawaiiymf.org
 Past President – Eric Arakawa
earakawa@ascehawaiiymf.org

Next YMF General Meeting

The next YMF general meeting is scheduled for Tuesday, April 3, 6:00 p.m. at Kaka'ako Kitchen, 596-7488; and Thursday, May 3, 6:00 p.m. place to be determined. If you are interested in attending to find out what the YMF is all about, contact the YMF at yfmf.hawaii@gmail.com.

MATHCOUNTS Oahu Chapter Competition
 By David Lin and Tiffany Hamada
 Community Service Chairs

On Saturday, February 25, 2012, 12 ASCE YMF members volunteered at the MATH-COUNTS Oahu Chapter competition at Punahou School. This competition involved 6th – 8th grade students from schools all over Oahu. The math skills of these students were put to the test as they were challenged to solve a series of math problems within a given time limit. YMF members helped by tallying the results for three different rounds: Sprint, Target, & Team. Thank you to all the volunteers for coming out to help with this event, Ed Chang for coordinating this event with the YMF, and Ed Kellett for graciously donating giftcards to YMF.



www.sfpehawaii.org

OFFICERS

President Melvin K. Harano, P.E. 848-6966
harano@thermaleng.com
 Vice-Pres Robert T. Bigtas, P.E. 526-9019
Rbigtas-ssda@hawaii.rr.com
 Secretary Derick Kam 848-6966
kam@thermaleng.com
 Treasurer Samuel S. Dannaway, P.E. 526-9019
Sdannaway-ssda@hawaii.rr.com



OFFICERS

President – Kurt Bendler
 Vice President – Paul Brussow
 Director – Amarjit Singh
 Director – Maelyn Ueyehara
 Past President – Stephen Jacobson
 Treasurer – Guia Lasquete
 Secretary – Kevin Mitchell



Hawaii Section 2010-2011 Officers

www.ite-hawaii.org

President: Honglong Li
lih@pbworld.com
 Vice President: Michael Packard
mpackard@ssfm.com
 Secretary: Juanita Wolfgramm
hwolfgramm@ssfm.com
 Treasurer: Sara Toyama
stoyama1@honolulu.gov
 Director: Steven Yoshida
steven.yoshida@hawaii.gov

Professional Directory

 oceanit www.oceanit.com	 SUITE 1500, PACIFIC PARK PLAZA 711 KAPIOLANI BOULEVARD HONOLULU, HAWAII 96813 TELEPHONE: (808) 593-1676 FAX: (808) 593-1807 EMAIL: paren@pareninc.com cba.park engineering Engineers, Surveyors, Planners	 Sato & Associates, Inc. HONOLULU 2046 South King Street Honolulu, HI 96826 Tel: (808) 955-4441 Fax: (808) 942-2027 MAUI 2115 Wells Street Wailuku, HI 96793 Tel: (808) 244-9265 Fax: (808) 244-5303 CONSULTING ENGINEERS - CIVIL & STRUCTURAL	 <ul style="list-style-type: none"> • Environmental & Infrastructure • Design & Engineering Services • Construction & Maintenance • Homeland Security 590 Paiea Street, Suite B, Honolulu, HI 96819-1835 Tel: (808) 840-2000 • FAX: (808) 839-0339
Tim Waite, P.E. Sales, Engineer Mobile: 808-479-1216 Email: twait@strongtie.com Simpson Strong-Tie Co., Inc.	 SHIMABUKURO, ENDO & YOSHIZAKI, INC. Civil, Environmental & Structural Engineers 1126 12th Avenue, #309 Honolulu, Hawaii 96816-3715 Phone: (808) 737-1875 Fax: (808) 734-5516 Email: seyeng@lava.net	 SSFM INTERNATIONAL 501 Sumner Street, Suite 620 Honolulu, Hawaii 96817 Ph (808) 531-1308 Fax (808) 521-7348 www.ssfm.com	State Dept. of Transportation hawaii.gov/dot Engineering transportation solutions in Airports, Harbors, Highways and Administration
 WES THOMAS ASSOCIATES Land Surveyors 75-5749 Kalawa St., Kailua-Kona, Hawaii 96740-1817 Tel: 808 329-2353 Fax: 808-329-5334 Surveying Hawaii Since 1975	 WPT 720 IWILEI ROAD SUITE 425 P.O. BOX 3351 HONOLULU, HI 96801 PHONE: (808) 536-2705 FAX: (808) 599-4032	 R. M. TOWILL CORPORATION SINCE 1930	 URS Engineers Scientists Program and Construction Managers Environmental Planners 815 Piloa Street, 17 Floor Honolulu, Hawaii 96814-2141 Ph: (808) 585-1112 Fax: (808) 585-1156
 WALKER INDUSTRIES, LTD. Precast Concrete Products Frederick K. Wong, PE P.O. Box 1568 Honolulu, Hawaii 96812 Maui (808) 877-3430 Kahului (808) 871-7282	 WESTON SOLUTIONS An employee-ownership Company Weston Solutions, Inc. Suite 2301 841 Bishop Street Honolulu, Hawaii 96813 Phone: 808.275.2900 Fax: 808.585.7378 www.westonsolutions.com	 WILSON OKAMOTO CORPORATION www.wilsonokamoto.com	 YKE Geotechnical Engineering Tunneling Technology Construction Management 417 Piloa St., Suite 1000 Honolulu, HI 96814 Tel: (808) 585-1156 Fax: (808) 585-1156

HAWAII COUNCIL OF
ENGINEERING SOCIETIES
P.O. Box 2873
Honolulu, Hawaii 96802

Presorted
Standard
U.S. Postage Paid
Honolulu, Hawaii
Permit No. 9434

RETURN SERVICE REQUESTED

Professional Directory

 <p>111 Bishop St., Suite 110 Honolulu, Hawaii 96813 Ph: (808) 521-7995, Fax: (808) 521-3939 Email: ace@acesurveying.com</p>	 <p>We work to enhance and sustain the world's built, natural and social environments. www.aecom.com</p>	<p>ALLANA BUICK & BERS Building solutions. Engineering for life. Waterproofing & Roofing Building Envelope & Solar Solutions 808.538.0115 www.abbae.com</p>	<p>AARON UNO Industrial Precast Products Department</p>  <p>91-059 Hanua Street Kapolei, Hawaii 96707 Office: (808) 673-2310 Fax: (808) 673-3355</p>
 <p>WWW.BELT COLLINS.COM</p>	<p>Austin Tsutsumi Civil • Traffic • Environmental • Surveying Branch Offices in Waikuku, Maui and Hilo, Hawaii www.atahawaii.com</p>	 <p>BILLS ENGINEERING INC. Civil Environmental Engineering Tel: 808.792.2022 Fax: 808.792.2033 1124 Fort Street Mall Suite 200 Honolulu, HI 96813 info@BillsEngineering.com</p>	 <p>BOWERS + KUBOTA CONSULTING • Project Management • Planning • • Architectural/Engineering Design • Construction Management • 94-408 Akoki Street, Suite 201-A • Waipahu, Hawaii 96797 Phone: 808.836.7787 • Telefax: 808.834.4833</p>
<p>BROWN AND CALDWELL Environmental Engineers & Consultants Maui – Honolulu brownandcaldwell.com</p>	<p>ControlPoint Surveying, Inc. Oahu: 1150 South King Street, Suite 1200 Honolulu, Hawaii 96814 Ph: (808) 591-2022, Fax: (808) 591-8333 Email: surveying@cpshawaii.net Maui: 1129 Lower Main Street, Suite 102 Waikuku, Hawaii 96793 Ph: (808) 242-9641, Fax: (808) 244-9220 Email: cpmaui@cpshawaii.net</p>	<p>COFFMAN ENGINEERS LASTING creativity results relationships Multidiscipline Engineers www.coffman.com 851 Fort Street Suite 300 Honolulu, HI 96813 808.687.8884</p>	<p>CUMMING CORPORATION BUILDING VALUE THROUGH EXPERTISE Cost and Project Management Services (808) 947-4525 www.cummingcorporation.com</p>
<p>S. S. DANNAWAY ASSOCIATES, INC. FIRE PROTECTION ENGINEERS/BUILDING CODE CONSULTANTS 720 Iwilei Road, Suite 412, Honolulu, Hawaii 96817 Tel: (808) 526-9019 Fax: (808) 537-9385 Email: ssda@ssdafire.com Web: www.ssdafire.com Building Code Consulting • Performance Based Design/Fire Modeling • Plan Review/Code "Pulling" • Fire Protection Special Inspections • Code Negotiation • Fire Protection System Design • Fire Protection Engineering Surveys/Audits/SOCC's • Fire Protection Master Planning • Fire Protection Water Supply Analysis/Fire Hydrant Flow Tests</p>	<p>Y. Ebisu & Associates Acoustical and Electronic Engineers 1126 12th Avenue, Room 305 Honolulu, Hawaii 96816 (808) 735-1634</p>	<p>Engineering Concepts, Inc. Civil/Environmental/Sanitary Engineers 1150 South King Street, Suite 700 • Honolulu, Hawaii 96814 Phone: (808) 591-8820 • Fax (808) 591-9010 Email: eci@ceihawaii.com</p>	<p>ESH ENGINEERS-SURVEYORS HAWAII, INC. (FORMERLY WILLIAM HEE & ASSOCIATES, INC.) 1320 NORTH SCHOOL STREET HONOLULU, HAWAII 96817 Phone: 591-8116</p>
<p>ESM ENGINEERS • SURVEYORS Esaki Surveying and Mapping, Inc. Lihue, Kauai, Hawaii Ph. (808) 246-0625 • Fax (808) 246-0229 esmap@hawaiian.net Established 1979</p>	<p>Fewell Geotechnical Engineering, Ltd. OAHU: 96-1416 Waihona Place • Pearl City, Hawaii 96782-1973 (808) 455-6569 • FAX (808) 456-7062 MAUI: (808) 873-0110 FAX (808) 873-0906</p>	<p>MASA FUJIOKA & ASSOC. A PROFESSIONAL PARTNERSHIP ENVIRONMENTAL • GEOTECHNICAL • HYDROGEOLOGICAL CONSULTANTS MFA 98-021 Kamehameha Highway, Suite 337 Aiea, Hawaii 96701-4914 Phone 808 484-5366 • Fax 808 484-0007</p>	<p>FUKUNAGA & ASSOCIATES, INC. 1357 Kapiolani Blvd., Suite 1530 Honolulu, HI 96814 Ph: 944-1821 • Fax: 946-9339 office@fukunagaengineers.com www.fukunagaengineers.com</p>
<p>GEOLABS, INC. Geotechnical Engineering and Drilling Services 2006 Kalihii Street Honolulu, Hawaii 96819 Phone: 841-5064 Fax: 847-1749</p>	<p>Gray • Bang • Ruffalo & Associates, Inc. CONSULTING ENGINEERS 1111 Kalia Road, Suite 1000 Honolulu, Hawaii 96813 Phone: (808) 942-0066 Fax: (808) 942-0066</p>	<p>HDR Hawaii Pacific Engineers 1132 Bishop Street • Suite 1003 Honolulu, Hawaii 96813-2830 Phone: (808) 524-3771 • Fax: (808) 538-0445 Website: www.hdrinc.com</p>	<p>total POWER SOLUTION HAWTHORNE CAT Hawthorne Power Systems 94-025 Farrington Hwy, Waipahu, Hawaii 96797 808/676-0205</p>
<p>HIDA, OKAMOTO & ASSOCIATES, INC. CONSULTING CIVIL ENGINEERS PACIFIC GUARDIAN TOWER 1440 Kapiolani Boulevard, Suite 1120 Honolulu, Hawaii 96814 Phone: (808) 942-0066 Fax: (808) 947-7546</p>	<p>Hirata & Associates, Inc. Geotechnical Engineering 808.486.0787 www.hirata-hawaii.com</p>	<p>SAM O. HIROTA, INC. Engineers & Surveyors 864 S. Beretania Street Honolulu, Hawaii 96813 Telephone: 537-9971</p>	<p>INABA ENGINEERING, INC. 273 WAIANUENUE AVENUE HILO, HAWAII 96720 Phone: (808) 961-3727 / Fax: (808) 935-8033 Civil Engineering • Structural Engineering Land Surveying</p>
<p>ISLAND GEOTECHNICAL ENGINEERING, INC. Geotechnical Consultants 330 Ohukai Road, Suite 119 Kihei, Hawaii 96753 Phone: (808) 875-7355 Fax: (808) 875-7122 Email: ige@igehawaii.com</p>	<p>KennedyJenks Consultants Engineers & Scientists Airport Industrial Park Building 3375 Koapaka Street Suite F-227 Honolulu Hawaii 96819 P: 808.488.0477 F: 808.488.3776 www.KennedyJenks.com</p>	<p>THE LINTIACO CONSULTING GROUP CIVIL ENGINEERING AND ENVIRONMENTAL CONSULTANTS 680 Iwilei Road, Suite 430 • Honolulu, Hawaii 96817 Tel: (808) 596-7790 • Fax: (808) 596-7361 • tlc@hawaii.com</p>	<p>Creative People, Practical Solutions.® moffatt & nichol Marine & Transportation Planners and Engineers 808.533.7000 www.moffattnichol.com</p>
<p>NAGAMINE OKAWA ENGINEERS INC. CONSULTING STRUCTURAL ENGINEERS 1003 Bishop Street • Suite 2025 Honolulu, Hawaii 96813 Phone: (808) 536-2626 • FAX: (808) 536-3926</p>	<p>NAKAMURA, OYAMA AND ASSOCIATES, INC. CONSULTING ENGINEERS ELECTRICAL/TELECOMMUNICATIONS/FIRE PROTECTION 1314 South King St., Suite 401 Honolulu, Hawaii 96814-1939 Telephone (808) 591-8887 Fax (808) 596-2383</p>	<p>NEWCOMER - LEE LAND SURVEYORS, INC. 1498 Lower Main Street, Suite "D" Waikuku, HI 96793-1937 Tel: (808) 244-8889 Fax: (808) 244-8422</p>	<p>Pacific Geotechnical Engineers, Inc. Soils & Foundation Engineering Consultants 94-417 Akoki Street Waipahu, Hawaii 96797 (808) 678-8024 FAX (808) 678-8722 E-mail: pge@pacificgeotechnical.com</p>