



Product of Australia

All About Clefs

by Beatrice Wilder

CONTENTS

- 1: Three Clefs
- 2: Just the G Clef
- 3: The F Clef
- 4: The C Clef
- 5: Neutral Clef

Copyright © Music Fun 2012

P.O. Box 342 Katoomba NSW 2780
19 Millyard Lane Katoomba 2780

Phone: (02) 4782 3073

Email: info@musicfun.com.au

Web: www.musicfun.com.au



1. Three Clefs



This is a **G** Clef

It is meant to look a little like a G

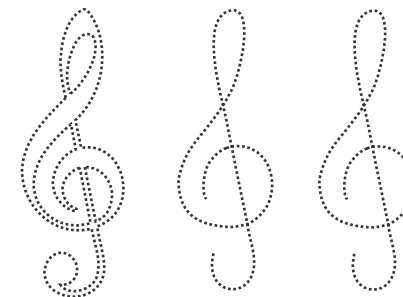
We usually refer to it as a 'Treble Clef'

Here are some more strange looking 'G's.



Can you see the shape of a 'G' in the G Clef?

Some tracing and colouring practice:



This is an **F** Clef

It is meant to look a little like a F

We usually refer to it as a 'Bass Clef'

Here are some more strange looking 'F's.



Can you see the shape of an 'F' in the F Clef?

Some tracing and colouring practice:



This is a **C** Clef

It is meant to look a little like a C

We usually refer to it as an 'Alto Clef' and sometimes a 'Tenor Clef'

Here are some more strange looking 'C's.



Can you see the shape of a 'C' in the C Clef?

Some tracing and colouring practice:



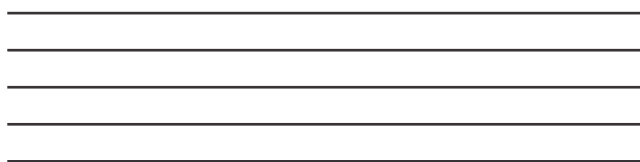


All About Clefs

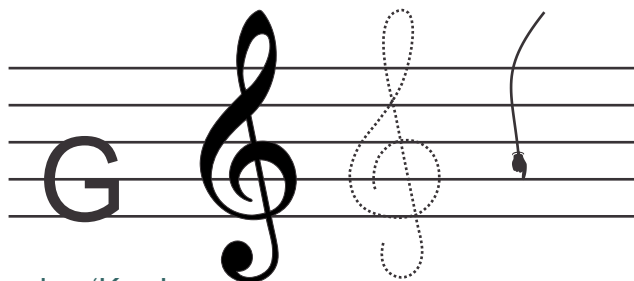
Name

2. Just the G Clef

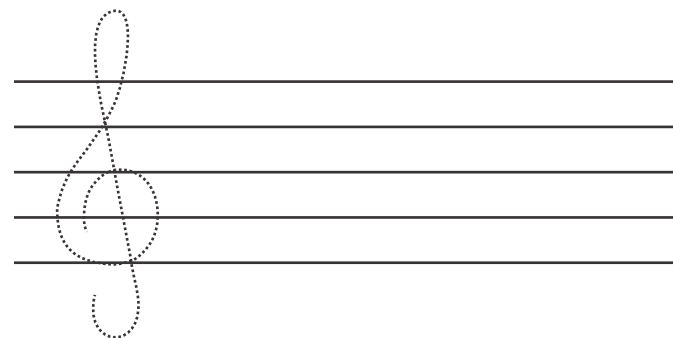
Imagine writing music on a staff like this one:
Where's G? Where's F?



It would be easier if you knew where 'G' was:



Of course, our staves are five lines only and the G clef or Treble clef tells us that the line around which it curls is the G above middle C, also called G4.
Copy another two treble clefs.



The word 'Clef' comes from an old Latin word meaning 'Key.'
The letters 'F' and 'C' and 'G' were written on the staff as a 'key' to the names of the notes.
The 'G' clef tells you which line is going to be 'G'.

The next G up from Middle C is called G4 because it is in the 4th octave on the piano. A piano usually has eight octaves.

A piano keyboard diagram showing notes A through C in each octave. G notes are labeled G1 through G7. Middle C is labeled C4. Hand icons point to G notes and C notes with circles below them for labeling.

Middle C is C4

Label all of the other C's

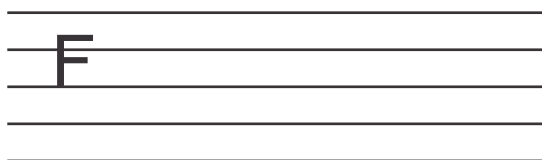


All About Clefs

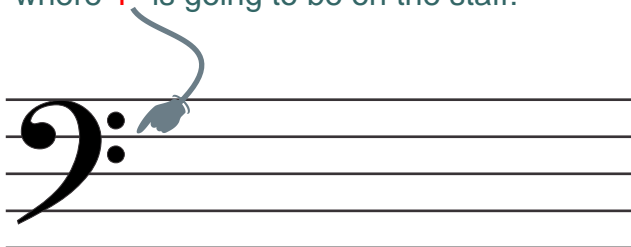
Name

3. The F Clef

Before the modern F clef, the letter 'F' was simply written onto the staff. If we did that these days it might look like this:

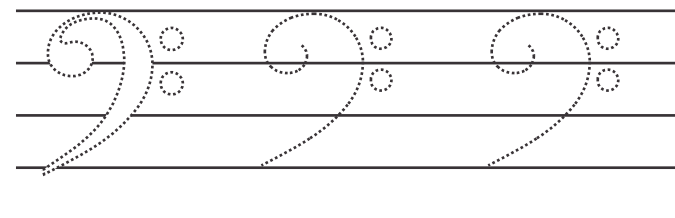


The F clef, or bass clef tells you where 'F' is going to be on the staff:



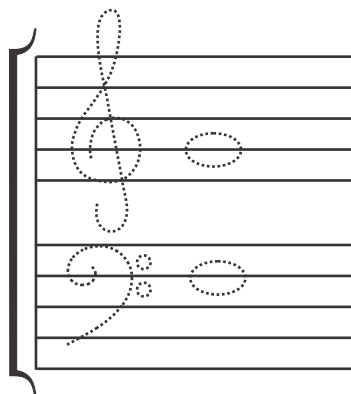
The line that goes between the two dots on the bass clef is F3.

This means that it is the 'F' below middle C. Copy another two bass clefs.



The bass clef is used on the bottom clef on the grand staff.

Trace the clefs on the grand staff opposite and label the notes correctly:

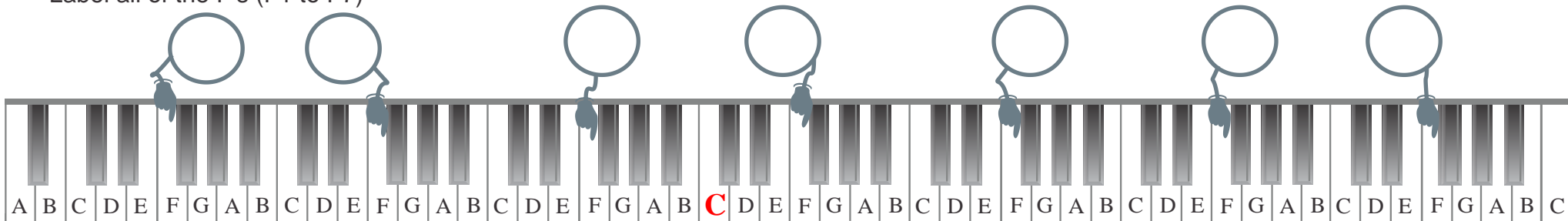


Answer these:

The F Clef is also called the

The G Clef is also called the

Label all of the F's (F1 to F7)



Middle C is C4

Circle the F indicated by the Bass Clef



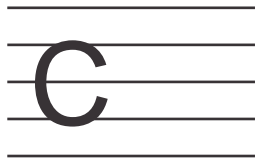
All About Clefs

Name

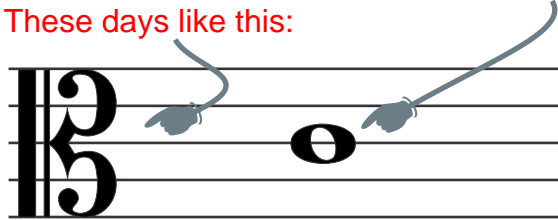
4. The C Clef

The C Clef tells you which line Middle C is on. It used to be drawn just as a 'C'

Rather like this:



These days like this:

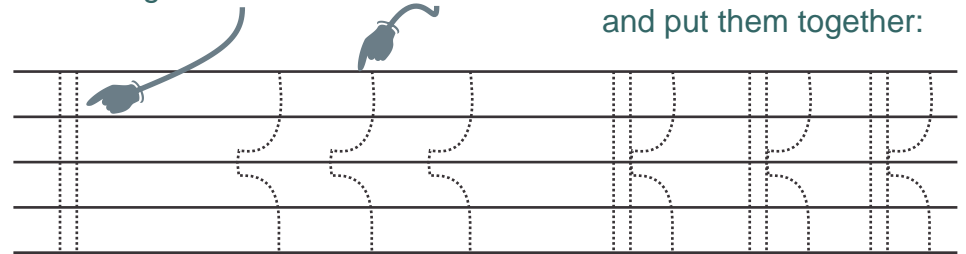


Then you know that Middle C is here:

To draw a C clef yourself, start with two straight lines:

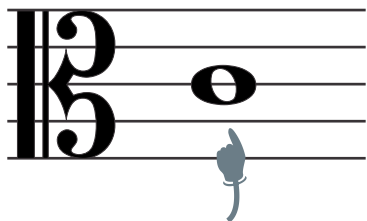
Practice the C Curve:

and put them together:



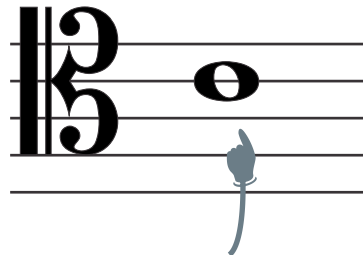
The C Clef is tricky!

Here it is called an Alto Clef:



Middle C

Here it is called a Tenor Clef:



Middle C

Practice tracing and copying the alto clef:



These days, generally the only instrument using the alto clef is the:

Viola

but these can also use it:

Alto trombone

Oboe

Some recorders

Instruments that can use the tenor clef include:

Cello

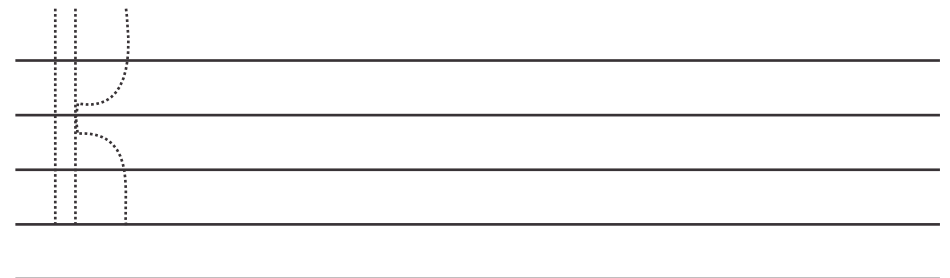
Trombone

Euphonium

Bassoon

Double Bass

Practice tracing and copying the tenor clef:





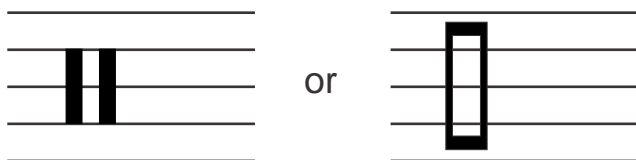
All About Clefs

Name

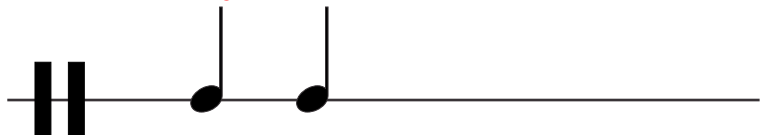
5. Neutral Clef

This clef is used for percussion instruments of indefinite pitch.

A different sort of clef altogether.
It does not have a letter name.
Both of these clefs are commonly used:



Sometimes only one line is needed:



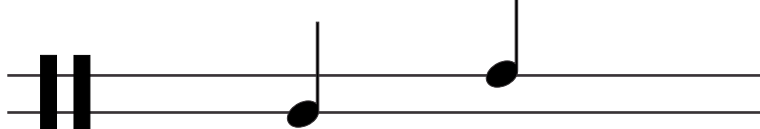
Instruments you could use this for:

Triangle
Tambourine

Find another.



Sometimes two lines are needed:



Instruments you could use this for:

Bongo Drums
Congas

Find another.



Practice drawing the Neutral Clef:

Blank musical staff lines for practicing drawing the neutral clef.

Percussion instruments with indefinite pitch:

- Drums
- Woodblock
- Slapstick
- Guiro
- Triangle
- Castanets

Add some of your own:

Five dotted lines for adding more percussion instruments.

Some drum sets need lines and spaces for each drum so the composer would use five lines using note position as a guide to which drum to use, like this:

