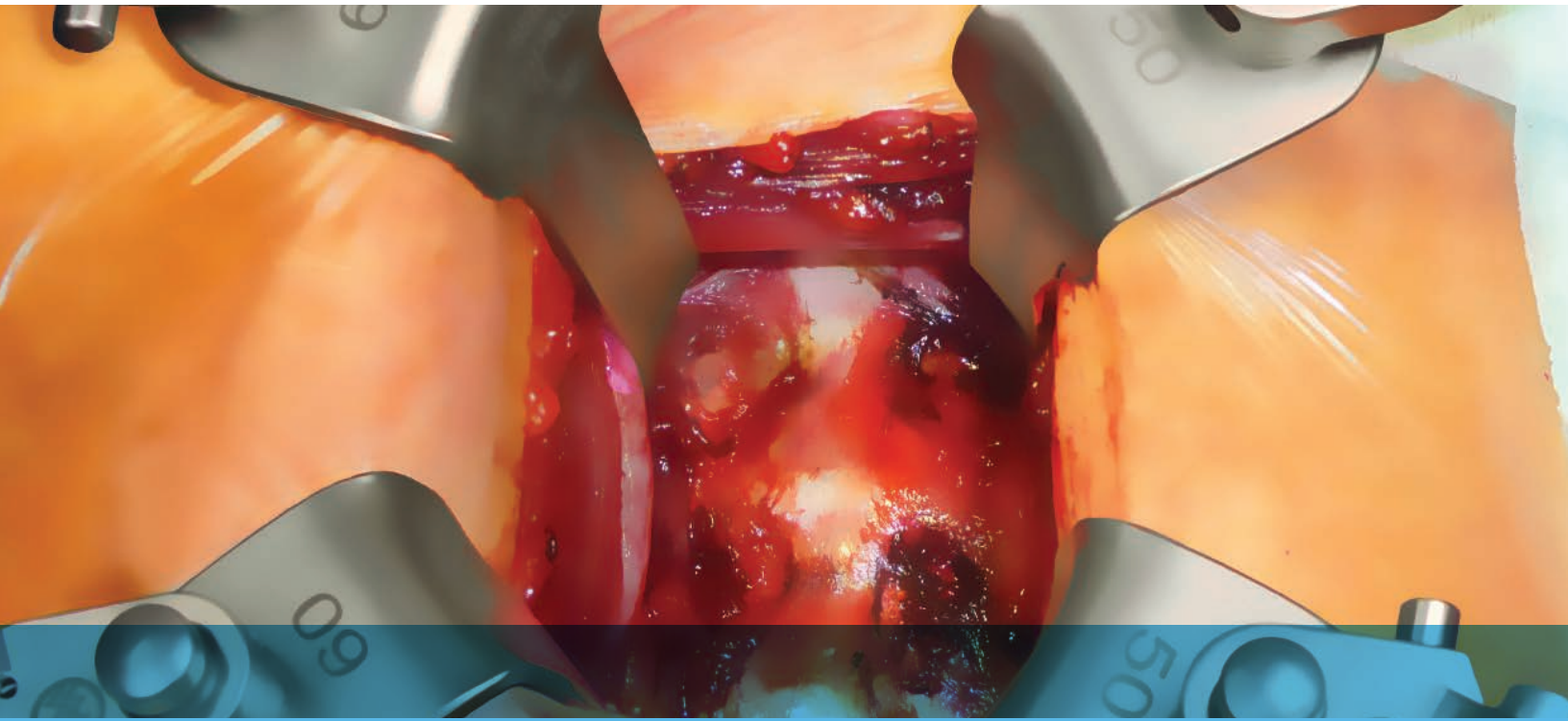


2012
Spine
Selection
Guide

Thompson Retractor 



- ANTERIOR CERVICAL EXPOSURES
- ANTERIOR LUMBAR EXPOSURES
- POSTERIOR LUMBAR EXPOSURES
- SPINE ACCESSORIES

Uncompromised Exposure.

Innovation In Surgical Retraction

Thompson Surgical Instruments, Inc. is the market leader in surgical retraction and the original manufacturer of the table mounted retractor. In use for over thirty years, the Thompson Retractor is the only mechanical retractor to offer one frame for all exposure needs, multi-planed independent retraction, and unlimited customization.

We understand the value of exposure in successful surgery and are dedicated to providing innovative, high quality retractor systems that deliver safe, versatile, low-profile retraction.

Spine surgeons especially will benefit from the Thompson Retractor’s versatility and ability to independently retract and position every blade safely.

“Exposure should never be compromised – only the Thompson Retractor offers Uncompromised Exposure!”

In this Guide

THOMPSON RETRACTOR SPINE FRAME EXPOSURE SYSTEMS

Spine Frame.....	3-5
Cervical Spine Exposure Overview	6-7
Cervical Spine Blade Selection	8-9
Cervical Spine Blade Kits.....	10-11
Anterior Lumbar Spine Exposure Overview.....	12-13
Anterior Lumbar Spine Blade Selection and Kits.....	14-15
Spine Frame Handles and Accessories.....	16-17

OTHER THOMPSON RETRACTOR SPINE EXPOSURE SYSTEMS

Central Cervical Access Retractor Overview.....	18-20
Central Cervical Access Retractor Selection and Kits	21
MIS Posterior Lumbar Access System Overview.....	22
MIS Spine Frame and MIS Posterior Lumbar Access Blade Kits.....	23-25

SPINE ACCESSORIES

Min-Rad System Overview.....	26
Min-Rad System Selection	27

Uncompromised Spine Exposure with the Thompson Retractor Spine Frame

Strong and stable, the Spine Frame offers independently adjustable lateral arms to enable versatile retraction and maintain a low-profile operating field. The system includes patented one-piece retractor handles with angling and micro-adjustable features. These low-profile handles support all of our spine blades for exceptional retraction and exposure.



INDEPENDENT FRAME ARMS

The lateral frame arms can be independently adjusted to easily facilitate precise retraction and create a low-profile operating field. Independent frame arms enable safe, versatile retraction for spine access.



ONE-PIECE CLIP-ON RETRACTOR HANDLES

All retractor handles are available in one-piece, thereby reducing inventory and instrument counts. Patented spring loaded clip-on joints are low-profile, can be clipped anywhere to the frame, quickly secure, and never fall off. The quick locking handle always points away from the field.



ANGLING TECHNOLOGY

Angling Retractor Handles allow for versatile, low-profile positioning of retractor blades allowing surgeons to maintain a low-profile operating field. Available on all handles.



MICRO-ADJUSTABLE HANDLE FEATURE

Patented Micro-Adjustable Handles enable surgeons to obtain increased leverage and precise blade retraction with micro-adjustability.



QUICK BLADE CHANGE

Included on all retractor handles is a patented locking, interchangeable blade feature. This feature enables quick blade changes with just the push of a button.

SPINE BLADES

- **RADIOLUCENT TITANIUM** – All spine blades are made from titanium which resists corrosion and wears better than aluminum. Titanium provides excellent radiolucency and strength, yet remains lightweight.
- **SUPERIOR BLADE SELECTION** – Thompson offers various kits and patented blades in a wide array of styles to suit many surgical needs. Custom blades are available upon request.
- **COMPETITIVE HANDLES** – Enables adaption of any Thompson interchangeable blade to Bookwalter, Omni and Synthes retractors.

Eliminates shifting and rising of blades.



Spine Frame

In use for over 30 years, the Thompson Retractor is the only mechanical retractor to offer one frame for all exposure needs, multi-planed retraction, and unlimited customization. The Spine Frame was developed with the spine surgeons' needs in mind.

FRAME BENEFITS

- Independent retraction
- Versatility
- Controlled, precise retraction
- Stability

Frame Set-Up



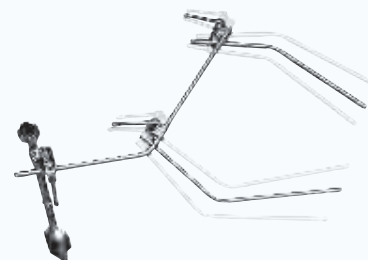
ELITE II RAIL CLAMP

Top control eases attachment to the OR table over the sterile drapes. If using an O-arm or similar imaging platform, please call for shorter Elite options. See page 17 for table rail adapters.



CAM JOINTS

One-piece design offers instant lock-and-release, making set-up, adjustments and instrument count time quick and easy. As shown, the crossbar quickly locks in place.



INDEPENDENT LATERAL ARMS

Unlimited set-up possibilities and flexibility are yours with the Spine Frame's independently adjustable arms.

S-LOCK SPINE FRAME – For use with S-Lock blades only.

QTY	ITEM DESCRIPTION	PART #
	S-Lock Spine Frame	SL90003
1	Elite II Rail Clamp with 1 Cam Joint 18"	41902AC
1	Crossbar with 2 Cam Joints 24"	41900BC
2	Angled Arm 18" (8" x 10")	44118N
6	S-Lock Clip-on Angling 8"	SL42126WA*
1	Angling Head Wrench	43032
1	Instrument Case with Pin Mat 22" x 11" x 3 1/2"	50000G

*S-Lock blades are denoted with an 'SL' before the part number. S-Lock blades are compatible with S-Lock handles ONLY (also denoted with an 'SL' before the part #). See page 16 for S-Lock handles.

SPINE FRAME – For use with Interchangeable Blades only.

QTY	ITEM DESCRIPTION	PART #
	Spine Frame	90003CS
1	Elite II Rail Clamp with 1 Cam Joint 18"	41902AC
1	Crossbar with 2 Cam Joints 24"	41900BC
2	Angled Arm 18" (8" x 10")	44118N
5	Cam II Clip-on Angling 8"	42126WA**
1	Micro-Adjustable II Clip-on Angling 7 3/4"	45007CA
1	Angling Head Wrench	43032
1	Instrument Case with Pin Mat 22" x 11" x 3 1/2"	50000G

**For non-cam locking handles and for extra controlled blade placement, see Handle options on page 16.

Utilize the Spine Frame with any Spine Blade Kit for Uncompromised Exposure.

Retractor Handle Attachment

Interchangeable handles are permanently mounted in the Cam II clip-on joints to create a one-piece handle.



Clip joint onto frame at any location.



Position blade in site and attach handle to blade.



Retract & lock in position.

Micro-Adjustable Retractor Handle Adjustment



Ratcheted handle makes for quick and easy blade adjustment without having to unlock joint.



Micro-Adjustable knob provides leverage and microadjustments for precise blade retraction.



Rotating feature provides atraumatic alignment on anatomy and precise blade positioning.

Angling Retractor Handle Adjustment



Blades may be angled or toed infinitely for low-profile Uncompromised Exposure.

Changing Blades

Quickest and easiest changing of blades in the industry.



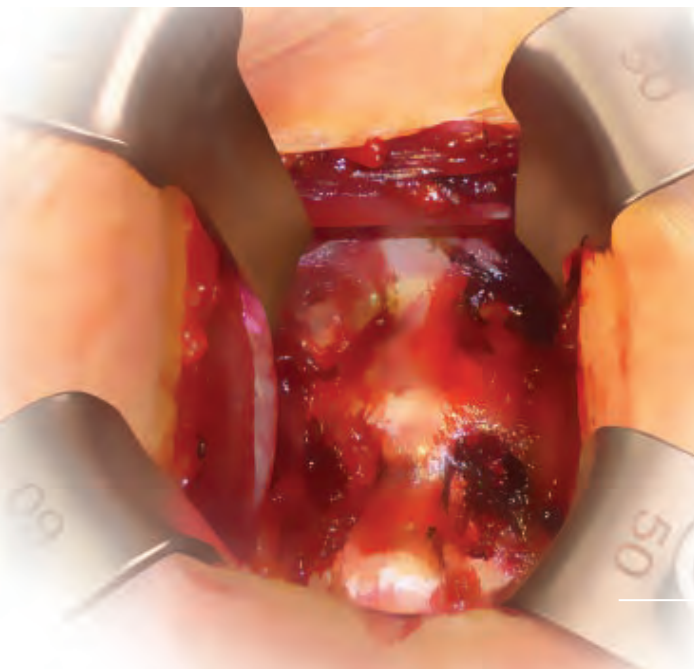
Easy off release button.



Select new blade size or style.



Easy on attachment.



Uncompromised Anterior Cervical Exposure

The Thompson Retractor offers a secure, table mounted solution that eliminates the need for toothed blades and the excess retraction required by self-retaining retractors to stay in place. Uncompromised Anterior Cervical Exposure is safer and easier with the Thompson Retractor.

S-Lock Angling Retractor Handles and Blades enable Uncompromised Exposures and low-profile, precise retraction of anatomical structures.

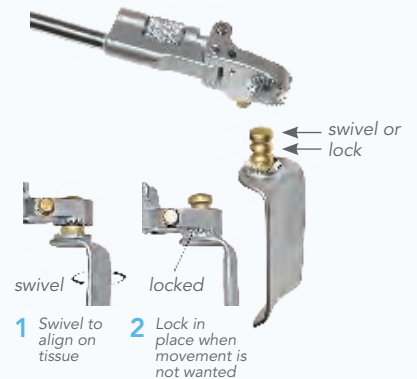
Exclusive Features

Thompson Retractor's Radiolucent Anterior Cervical Blade Kits provide Uncompromised Exposure of the anterior cervical spine and are all made from lightweight titanium for excellent radiolucency. The Anterior Cervical Blade Kits are recommended for use with the Spine Frame (or S-Lock™ Spine Frame—see page 4) to allow blades to be individually positioned providing independent, safe retraction of the esophagus, trachea and carotid sheath structures.



RADIOLUCENT TITANIUM

All anterior cervical spine blades are made from titanium which resists corrosion and wears better than aluminum. Titanium provides excellent radiolucency, strength, and yet remains lightweight.

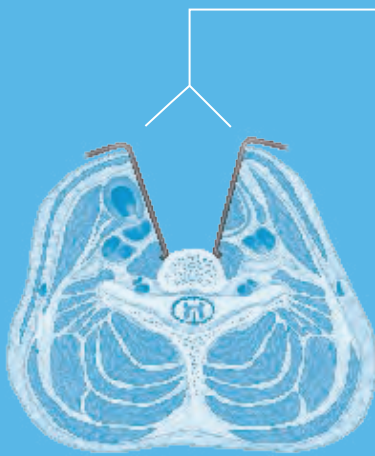


S-LOCK TECHNOLOGY

Achieve precise blade placement. S-Lock Technology is available in all S-Lock Blade Kits and require use of S-Lock Handles.

Aluminum blades available, call for more information





Independent retractor blades enable less invasive independent retraction of the medial and lateral structures.

THOMPSON RETRACTOR FOR ANTERIOR CERVICAL ACCESS PROVIDES:

- Elimination of shifting or "rise up" in the wound
- Independent retraction and blade positioning
- Reduced risk of esophageal and nerve injury
- Low-profile, phenomenal single and multi-level exposure



ORGANIZED INSTRUMENT CASES

All blade kits come with a stenciled case (50000ACT shown) that allows for quick blade selection and organization. Instrument counts are faster and blades are always visible.



EXTENSION ARM

Exceptional exposure for corpectomy procedures is possible using the 12" Extension Arm (44014LC). The Extension Arm also helps facilitate C-2, or the thoracic inlet exposure. Mount the Extension Arm anywhere on the Spine Frame.



DEPTH GAUGE

To help select the appropriate blade depth, all Anterior Cervical Blade Kits include a depth gauge (46521) that measures depths up to 100mm.

See our Expanded Anterior Cervical Blade Kits on page 10 for the most complete blade depth selection.

INTERCHANGEABLE BLADES

Interchangeable blades are the original Thompson design and swivel 180°. Blades stay in place with retraction pressure, thereby aligning the blade atraumatically on the tissue. If locking of the blade relative to the handle is desired, the S-Lock offers both the swivel and lock option.

Thompson Retractor offers several blade kits for use with the Spine Frame:

- S-Lock Radiolucent Anterior Cervical Blade Kit (SL91049N)
- Radiolucent Anterior Cervical Blade Kit (91049N)
- Expanded blade kits offer a larger variety of blade styles and depths.
- S-Lock Expanded Radiolucent Anterior Cervical Blade Kit (SL91042)
- Expanded Radiolucent Anterior Cervical Blade Kit (91042)

Basic kits and toothed blade kits are also available. See pages 10 & 11 for complete blade selection.

Cervical Spine Blade Selection

Thompson Retractor offers a wide variety of cervical blade styles and sizes. From midline blades to micro blades, we offer options for all levels and complexities of cervical exposure. Additionally, many of these blades may be used for posterior lumbar exposure.

The interchangeable radiolucent titanium blades below are available in our Anterior Cervical Blades Kits or as individual blades. All blades are offered with or without S-Lock Technology.



● RADIOLUCENT CONCAVE BLADES

Ideal for medial and lateral retraction for multi and single level procedures. Concavity helps protect tissue and blunt distal end is less aggressive.*

Blades are available in 35, 40, 45, 50, 55, 60, 65, 70, 75, & 80mm lengths in the Expanded Anterior Cervical Blade Kit and 40, 50, 60, 70, & 80mm in the standard Anterior Cervical Blade Kit.

All blades are 23mm wide.

*Short toothed blades are available for lateral muscle retraction. In most cases, the table mounted frame eliminates the need for teeth.



● RADIOLUCENT CONCAVE TAPERED BLADES

Ideal for medial and lateral retraction for multi and single level procedures. Concavity helps protect the tissue and blunt distal end is less aggressive.*

Blades are available in 40, 45, 50, 55, 60, 65, & 70mm lengths in the Expanded Anterior Cervical Blade Kit and 45mm in the Standard Anterior Cervical Blade Kit.

All blades are 23mm wide at the proximal end and taper down.

*Long toothed blades are available for the medial muscle retraction. In most cases, the table mounted frame eliminates the need for teeth.



● RADIOLUCENT MICRO BLADES

Provides excellent exposure for microsurgical level operations. Narrow 14mm width allows for usage in posterior cervical and posterior lumbar microdiscectomy procedures.*

Blades are available in 35, 40, 45, 50, 55, & 60mm lengths in the Expanded Anterior Cervical Blade Kit and 40, 50, & 60mm in the standard Anterior Cervical Blade Kit.

*Short toothed blades are available for lateral muscle retraction. In most cases, the table mounted frame eliminates the need for teeth.



RADIOLUCENT LONGITUDINAL BLADES

Ideal for longitudinal retraction. Blunt, concave distal end matches vertebral body for better exposure.
 Blades are available in 30, 40, 50, 60, & 70mm lengths in the Expanded Anterior Cervical Blade Kit.
 All blades are 23mm wide.

Thompson Retractor offers a variety of radiolucent blade styles and sizes for anterior cervical access. Please call us at 1.800.227.7543 if you cannot find the blade you are looking for.



RADIOLUCENT CONCAVE TAPERED BLADES (wide)

Ideal for medial and lateral retraction for multi level procedures. Concavity helps protect the tissue and blunt distal end is less aggressive. May also be utilized for posterior lumbar exposures.*
 Blades are available in 50 & 65mm lengths in the standard Anterior Cervical Blade Kit.
 Proximal end of blade is 51mm wide and tapers down towards the end.
 *Long toothed blades are available for the medial muscle retraction. In most cases, the table mounted frame eliminates the need for teeth



RADIOLUCENT MIDLINE BLADES

Midline Blades provide excellent access and visibility under the mandible and when extensive anterior cervical vertebra exposure is needed. Ideal for corpectomies.
 Blades are available in left and right configurations (70mm x 83mm) in the Expanded Anterior Cervical Blade Kit and standard Anterior Cervical Blade Kit.



RADIOLUCENT ODONTOID BLADES

Ideal for anterior odontoid access and longitudinal cephalad retraction.
 20mm x 90mm available in the Expanded Anterior Cervical Blade Kit.



RADIOLUCENT MALLEABLE BLADES

Ideal for longitudinal cephalad retraction. Malleable design offers versatility.
 25mm x 110mm and 13mm x 90mm available in the standard Anterior Cervical Blade Kit.

Expanded Radiolucent Anterior Cervical Blade Kit

Our most comprehensive and complete anterior cervical blade selection includes six blade styles with depths from 30-80mm available in increments of 5mm. The Expanded Anterior Cervical Blade Kit is ideal for single and multi-level ACDF cases. All blades are made from lightweight radiolucent titanium and are available with or without S-Lock Technology.



EXPANDED RADIO-LUCENT ANTERIOR CERVICAL BLADE KIT

QTY	ITEM DESCRIPTION	S-LOCK PART #*	INTERCH. PART #	QTY	ITEM DESCRIPTION	S-LOCK PART #*	INTERCH. PART #
	Radiolucent Expanded Anterior Cervical Blade Kit	SL91042**	91042				
2	Radiolucent Concave 23mm x 35mm	SL46312AT	46312AT	(H)	2 Radiolucent Concave Tapered 23mm x 45mm	SL45645AT	45645AT
(A)	2 Radiolucent Concave 23mm x 40mm	SL46314AT	46314AT	2	Radiolucent Concave Tapered 23mm x 50mm	SL45646AT	45646AT
2	Radiolucent Concave 23mm x 45mm	SL46316AT	46316AT	2	Radiolucent Concave Tapered 23mm x 55mm	SL45647AT	45647AT
(B)	2 Radiolucent Concave 23mm x 50mm	SL46318AT	46318AT	2	Radiolucent Concave Tapered 23mm x 60mm	SL45648AT	45648AT
2	Radiolucent Concave 23mm x 55mm	SL46320AT	46320AT	2	Radiolucent Concave Tapered 23mm x 65mm	SL45649AT	45649AT
(C)	2 Radiolucent Concave 23mm x 60mm	SL46322AT	46322AT	2	Radiolucent Concave Tapered 23mm x 70mm	SL45650AT	45650AT
2	Radiolucent Concave 23mm x 65mm	SL46324AT	46324AT	2	Radiolucent Concave Micro 14mm x 35mm	SL46510AT	46510AT
(D)	2 Radiolucent Concave 23mm x 70mm	SL46326AT	46326AT	(I)	2 Radiolucent Concave Micro 14mm x 40mm	SL46512AT	46512AT
2	Radiolucent Concave 23mm x 75mm	SL46328AT	46328AT	2	Radiolucent Concave Micro 14mm x 45mm	SL46514AT	46514AT
(E)	2 Radiolucent Concave 23mm x 80mm	SL46330AT	46330AT	(J)	2 Radiolucent Concave Micro 14mm x 50mm	SL46516AT	46516AT
2	Radiolucent Concave Longitudinal 23mm x 30mm	SL45160AT	45160AT	2	Radiolucent Concave Micro 14mm x 55mm	SL46518AT	46518AT
2	Radiolucent Concave Longitudinal 23 mm x 40mm	SL45161AT	45161AT	(K)	2 Radiolucent Concave Micro 14mm x 60mm	SL46520AT	46520AT
(G)	2 Radiolucent Concave Longitudinal 23mm x 50mm	SL45162AT	45162AT	(L)	1 Radiolucent Midline Right 70mm x 83mm	SL45750AT	45750AT
2	Radiolucent Concave Longitudinal 23mm x 60mm	SL45163AT	45163AT	(M)	1 Radiolucent Midline Left 70mm x 83mm	SL45751AT	45751AT
2	Radiolucent Concave Longitudinal 23mm x 70mm	SL45164AT	45164AT	(F)	1 Radiolucent Odontoid 20mm x 90mm	SL45666AT	45666AT
2	Radiolucent Concave Tapered 23mm x 35mm	SL45643AT	45643AT	(N)	1 Anterior Cervical Depth Gauge	46521	46521
2	Radiolucent Concave Tapered 23mm x 40mm	SL45644AT	45644AT	(O)	1 Instrument Case - Expanded Anterior Cervical	50000EAC	50000EAC

When ordering blades with teeth, specify by adding a "T" to the end of the part #. In most cases, the table mounted frame eliminates the need for teeth.

*S-Lock blades are denoted with an 'SL' before the part number. S-Lock blades are compatible with S-Lock handles ONLY (also denoted with an 'SL' before the part #). See page 16 for S-Lock handles.

**S-Lock blade kits must only be used with the S-Lock Spine Frame, see page 4.

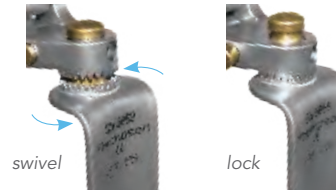
Radiolucent Anterior Cervical Blade Kit

Our standard Anterior Cervical Blade Kit includes a more conservative selection of blades for single to multilevel ACDF cases but adds wider tapered blades, malleable blades, and an extension arm for more complex procedures. All blades are made from light weight radiolucent titanium and are available with or without S-Lock Technology.



RADIOLUCENT ANTERIOR CERVICAL BLADE KIT

QTY	ITEM DESCRIPTION	S-LOCK PART #*	INTERCH. PART #
	Radiolucent Anterior Cervical Blade Kit	SL91049N**	91049N
Ⓡ 1	Extension Arm 12" with Latch Cam Joint	44014LC	44014LC
Ⓐ 2	Radiolucent Concave 23mm x 40mm	SL46314AT	46314AT
Ⓑ 2	Radiolucent Concave 23mm x 50mm	SL46318AT	46318AT
Ⓒ 2	Radiolucent Concave 23mm x 60mm	SL46322AT	46322AT
Ⓓ 2	Radiolucent Concave 23mm x 70mm	SL46326AT	46326AT
Ⓔ 2	Radiolucent Concave 23mm x 80mm	SL46330AT	46330AT
2	Radiolucent Concave Tapered 51mm x 50mm	SL45641AT	45641AT
2	Radiolucent Concave Tapered 51mm x 65mm	SL45642AT	45642AT
ⓗ 2	Radiolucent Concave Tapered 19mm x 45mm	SL45645AT	45645AT
Ⓘ 2	Radiolucent Concave Micro 14mm x 40mm	SL46512AT	46512AT
Ⓝ 2	Radiolucent Concave Micro 14mm x 50mm	SL46516AT	46516AT
Ⓚ 2	Radiolucent Concave Micro 14mm x 60mm	SL46520AT	46520AT
Ⓛ 1	Radiolucent Midline Right 70mm x 83mm	SL45750AT	45750AT
Ⓜ 1	Radiolucent Midline Left 70mm x 83mm	SL45751AT	45751AT
Ⓟ 1	Radiolucent Malleable 25mm x 110mm	SL45656AT	45656AT
1	Radiolucent Malleable 13mm x 90mm	SL45657AT	45657AT
Ⓝ 1	Anterior Cervical Depth Gauge	46521	46521
Ⓞ 1	Instrument Case - Anterior Cervical	50000ACT	50000ACT

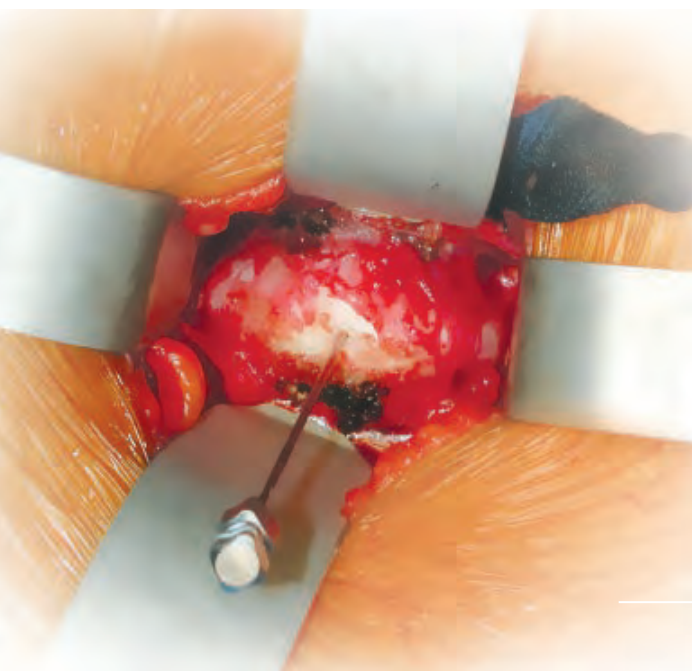


S-LOCK RETRACTOR HANDLES & BLADES
 S-Lock Retractor Handles and Blades allow for precise retractor positioning. In the swivel position, the blade "floats" and aligns on tissue. The locked position eliminates unwanted movement or rotation to ensure stable retraction in any plane. The swivel locking feature is simple and easy to use creating a safer operation with reduced time spent repositioning blades.

OTHER ANTERIOR CERVICAL BLADE KITS

ITEM DESCRIPTION	S-LOCK PART #*	INTERCH. PART #
Basic Radiolucent Anterior Cervical Blade Kit	SL91049BAS	91049BAS
Radiolucent Anterior Cervical Blade Kit with Teeth	SL91031N	91031N

When ordering blades with teeth, specify by adding a "T" to the end of the part #. In most cases, the table mounted frame eliminates the need for teeth.
 *S-Lock blades are denoted with an 'SL' before the part number. S-Lock blades are compatible with S-Lock handles ONLY (also denoted with an 'SL' before the part #). See page 16 for S-Lock handles.
 **S-Lock blade kits must only be used with the S-Lock Spine Frame, see page 4.



Uncompromised Anterior Lumbar Exposure

The anterior approach to the lumbar spine is heavily dependent on the ability of the access surgeon to provide exposure quickly and safely. Additionally, exposure of the anterior lumbar spine and safe retraction of the abdominal and vascular structures are crucial for successful lumbar fusions and decompressions. The Thompson Retractor provides safe and effortless Uncompromised Anterior Lumbar Exposure.

Radiolucent Reverse Lip Anterior Lumbar blades offer phenomenal exposure of the anterior lumbar spine.

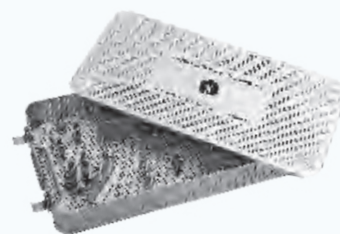
Exclusive Features

Thompson Retractor's Radiolucent Anterior Lumbar Blade Kits provide Uncompromised Exposure of the anterior lumbar spine. The radiolucent anterior lumbar blades are reusable and are recommended for use with the Spine Frame (or S-Lock Spine Frame—see page 4) to allow blades to be individually positioned providing independent, safe retraction of abdominal and vascular structures.



RADIOLUCENT TITANIUM

All anterior lumbar spine blades are made from titanium which resists corrosion and wears better than aluminum. Titanium provides excellent radiolucency strength, and yet remains lightweight.



ORGANIZED INSTRUMENT CASES

All blade kits come with a stenciled case (50000ALT shown) that allows for quick blade selection and organization. Instrument counts are faster and blades are always visible.

RETRACTOR LITE Xe

Improve illumination in deep cavities. Easily clips onto retractor blades and does not require a frame. See page 17 for more options.



DEPTH GAUGE

To help select the appropriate blade depth, all Anterior Lumbar Blade Kits include a depth gauge (51236) that measures depths up to 250mm.

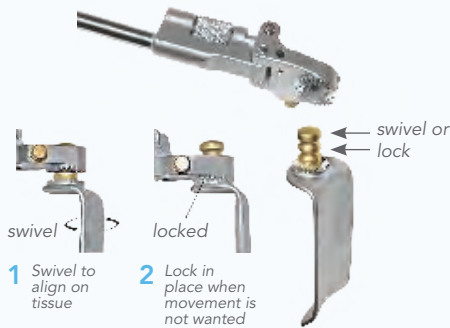




Anterior lumbar access is easy with the Spine Frame.

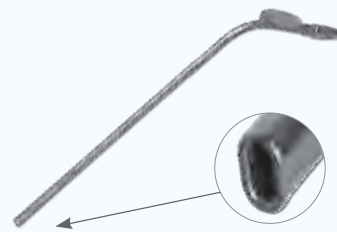
THOMPSON RETRACTOR FOR ANTERIOR LUMBAR ACCESS PROVIDES:

- Low-profile stable exposure
- Reduced risk of vascular, nerve & ureter injury
- Elimination of shifting or "rise up" in the wound



S-LOCK TECHNOLOGY

Achieve precise blade placement. S-Lock Technology is available in all S-Lock Blade Kits and require use of S-Lock Handles.



SALS
(Suction for Anterior Lumbar Surgery)

SALS (51234) was specially designed to fit narrow collapsed disc spaces. The oval shape at the tip of the large bore helps reduce clogging. In addition to a suction, the SALS is sturdy enough to be used as a distractor while working in the disc space. Included in all Anterior Lumbar Blade Kits.



BOOKWALTER, OMNI & SYNTHES ADAPTER HANDLES

Competitive adapter handles enable adaption of any Thompson interchangeable blades to a Bookwalter, Omni and Synthes retractor.

INTERCHANGEABLE BLADES

Interchangeable blades are the original Thompson design and swivel 180°. Blades stay in place with retraction pressure, thereby aligning the blade atraumatically on the tissue. If locking of the blade relative to the handle is desired, the S-Lock offers both the swivel and lock option.

Thompson Retractor offers several blade kits for use the Spine Frame:

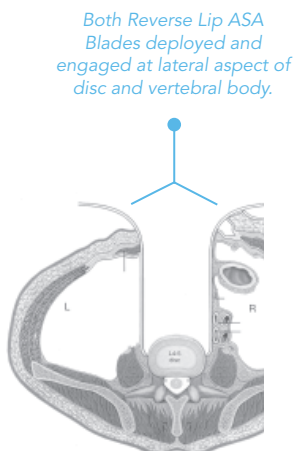
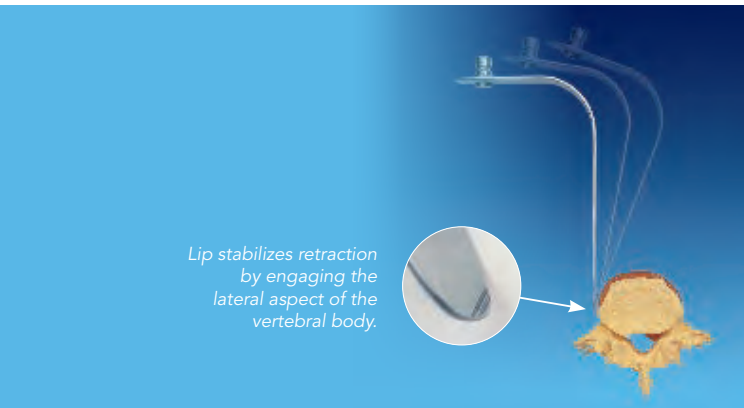
- S-Lock Radiolucent Brau Anterior Lumbar Blade Kit (SL91046)
- Radiolucent Brau Anterior Lumbar Blade Kit (91046N)
- S-Lock Radiolucent Anterior Lumbar Blade Kit (SL91035)
- Radiolucent Anterior Lumbar Blade Kit (91035NT)
- Basic Radiolucent Anterior Lumbar Blade Kit (91035BAS)

Radiolucent Brau (Reverse Lip) Anterior Lumbar Blade Kit

The Radiolucent Brau Anterior Lumbar Blade Kit provides excellent exposure of the anterior lumbar spine, especially for ALIF or artificial disc procedures. The reverse lip on the retractor blades enable them to engage the vertebral body while protecting vascular structures. These unique radiolucent, titanium blades were designed by Salvador Brau, M.D., F.A.C.S. exclusively for Thompson Surgical Instruments.

“The requirement of a ‘straight on’ anterior-posterior exposure for alignment of cages and artificial discs has presented a significant challenge for the approach surgeon to provide a small incision and yet maintain the degree of safety necessary to prevent injury to the iliac vessels and autonomic nerve plexus. The approach described here utilizing the Thompson Retractor system significantly reduces these concerns.”

–SALVADOR BRAU, M.D. F.A.C.S.



BRAU ANTERIOR LUMBAR BLADE KIT

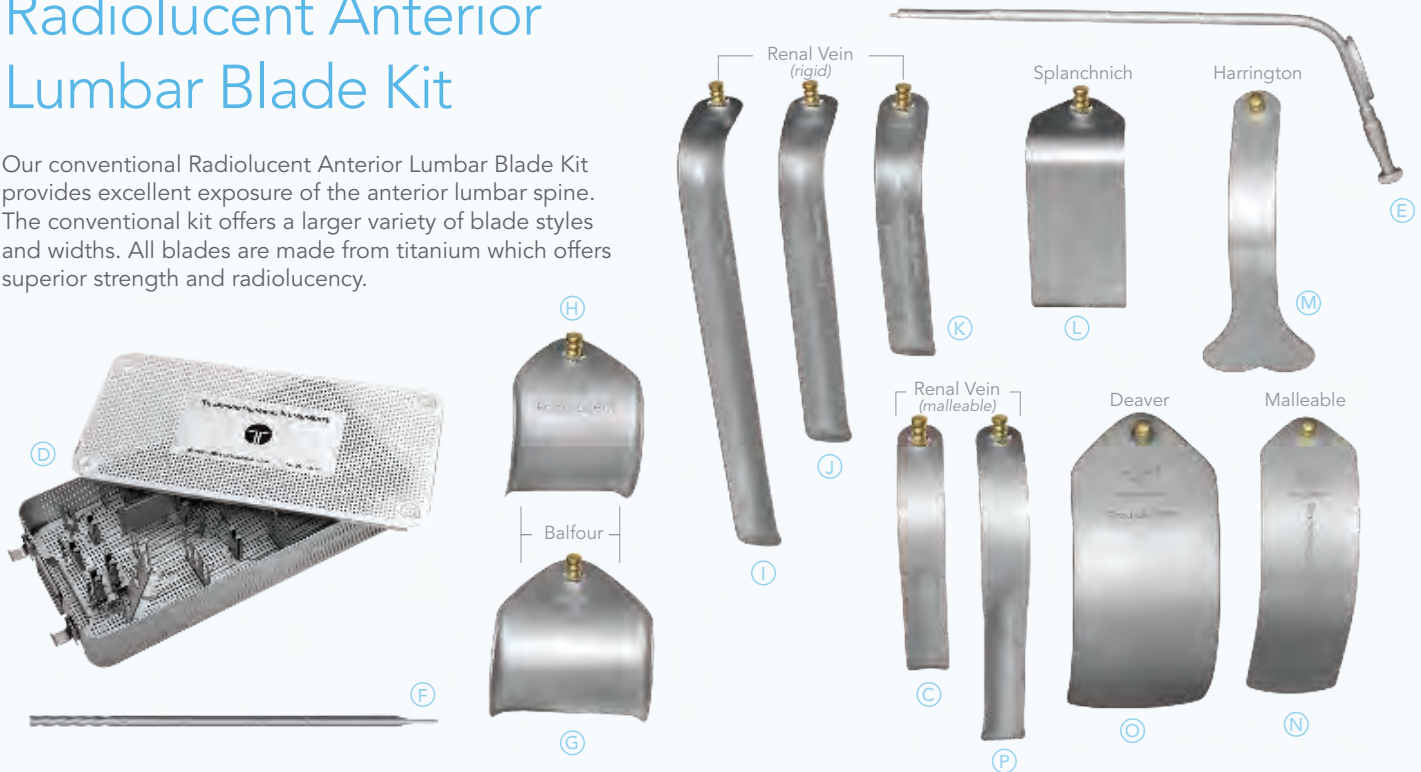
QTY	ITEM DESCRIPTION	S-LOCK PART #*	INTERCH. PART #
	Brau Anterior Lumbar Blade Kit	SL91046**	91046N
(A) 2	Reverse Lip ASA Malleable 25mm x 200mm	SL46192ET	46192ET
2	Reverse Lip ASA Malleable 32mm x 200mm	SL46193ET	46193ET
2	Reverse Lip ASA Rigid 25mm x 100mm	SL46194RET	46194RET
2	Reverse Lip ASA Rigid 25mm x 150mm	SL46195RET	46195RET
2	Reverse Lip ASA Rigid 25mm x 200mm	SL46196RET	46196RET
2	Reverse Lip ASA Rigid 32mm x 100mm	SL46197RET	46197RET
2	Reverse Lip ASA Rigid 32mm x 150mm	SL46198RET	46198RET
2	Reverse Lip ASA Rigid 32mm x 200mm	SL46199RET	46199RET
2	Reverse Lip ASA Rigid 25mm x 255mm	SL46200RET	46200RET
2	Reverse Lip ASA Rigid 32mm x 255mm	SL46201RET	46201RET
(B) 2	Reverse Lip ASA Tapered 25mm x 150mm	SL46195TET	46195TET
2	Reverse Lip ASA Tapered 25mm x 200mm	SL46196TET	46196TET
(C) 2	Radiolucent Malleable Renal Vein 25mm x 140mm	SL46119BET	46119BET
2	Radiolucent Malleable Renal Vein 25mm x 190mm	SL46119CET	46119CET
2	Radiolucent Rigid Renal Vein 25mm x 140mm	SL46119RET	46119RET
2	Radiolucent Rigid Renal Vein 25mm x 190mm	SL46120RET	46120RET
2	Radiolucent Rigid Renal Vein 25mm x 255mm	SL46121RET	46121RET
(D) 1	Instrument Case	50000RLT	50000RLT
(E) 1	Suction for Anterior Lumbar Surgery (SALS)	51234	51234
(F) 1	AL Depth Gauge	51236	51236

*S-Lock blades are denoted with an 'SL' before the part number. S-Lock blades are compatible with S-Lock handles ONLY (also denoted with an 'SL' before the part #). See page 16 for S-Lock handles.

**S-Lock blade kits must only be used with the S-Lock Spine Frame, see page 4.

Radiolucent Anterior Lumbar Blade Kit

Our conventional Radiolucent Anterior Lumbar Blade Kit provides excellent exposure of the anterior lumbar spine. The conventional kit offers a larger variety of blade styles and widths. All blades are made from titanium which offers superior strength and radiolucency.



RADIOLUCENT ANTERIOR LUMBAR BLADE KIT

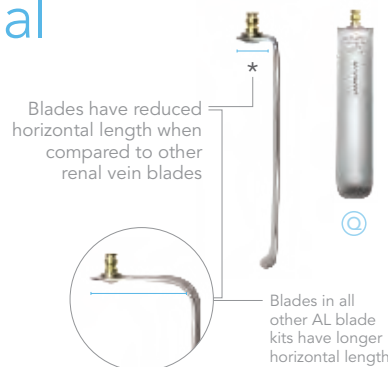
QTY	ITEM DESCRIPTION	S-LOCK PART #*	INTERCH. PART #	QTY	ITEM DESCRIPTION	S-LOCK PART #*	INTERCH. PART #
Radiolucent Anterior Lumbar Blade Kit				S-LOCK Radiolucent Renal Vein Blade Kit			
(C)	2 Radiolucent Malleable Renal Vein 25mm x 140mm	SL46119BET	46119BET	(G)	1 Radiolucent Balfour 83mm x 70mm	SO46141ET	46141ET
(P)	2 Radiolucent Malleable Renal Vein 25mm x 190mm	SL46119CET	46119CET	(L)	1 Radiolucent Splanchnich 51mm x 115mm	SL46145ET	46145ET
(K)	2 Radiolucent Rigid Renal Vein 25mm x 140mm	SL46119RET	46119RET	(M)	1 Radiolucent Harrington 64mm x 152mm	SL46160ET	46160ET
(J)	2 Radiolucent Rigid Renal Vein 25mm x 190mm	SL46120RET	46120RET	(O)	1 Radiolucent Deaver 76mm x 125mm	SO46176ET	46176ET
(I)	2 Radiolucent Rigid Renal Vein 25mm x 255mm	SL46121RET	46121RET	(D)	1 Instrument Case	50000ALT	50000ALT
(N)	2 Radiolucent Malleable 51mm x 200mm	SL46122ET	46122ET	(E)	1 Suction for Anterior Lumbar Surgery (SALS)	51234	51234
(H)	2 Radiolucent Balfour 65mm x 70mm	SO46140ET	46140ET	(F)	1 AL Depth Gauge	51236	51236

*S-Lock blades are denoted with an 'SL' before the part number. S-Lock blades are compatible with S-Lock handles ONLY (also denoted with an 'SL' before the part #). See page 16 for S-Lock handles.

**S-Lock blade kits must only be used with the S-Lock Spine Frame, see page 4.

Radiolucent Renal Vein Blade Kit

The S-Lock Radiolucent Renal Vein Blade Kit contains a streamlined set of renal vein blades 80mm-200mm. Blades in this kit differ from other renal vein blades in that the horizontal portion of the blade has been shortened* for a low profile, purely vertical blade. Available in non-S-Lock by request.



RADIOLUCENT RENAL VEIN BLADE KIT

QTY	ITEM DESCRIPTION	PART #**
S-Lock Radiolucent Renal Vein Blade Kit		
4	Radiolucent Concave 25mm x 80mm	SL46558
4	Radiolucent Concave 25mm x 100mm	SL46560
(C)	4 Radiolucent Concave 25mm x 120mm	SL46562
4	Radiolucent Concave 25mm x 140mm	SL46564
4	Radiolucent Concave 25mm x 160mm	SL46566
4	Radiolucent Concave 25mm x 180mm	SL46568
4	Radiolucent Concave 25mm x 200mm	SL46570
1	Instrument Case - AL Renal Vein	50000ALR

**S-Lock blades are denoted with an 'SL' before the part number. S-Lock blades are compatible with S-Lock handles ONLY (also denoted with an 'SL' before the part #). See page 16 for S-Lock handles.

***S-Lock blade kits must only be used with the S-Lock Spine Frame, see page 4.

Retractor Handles and Accessories



CAM II CLIP-ON ANGLING 8" HANDLES

S-Lock Angling	SL42126WA
Angling	42126WA



CAM II CLIP-ON NON-ANGLING 8" HANDLES

S-Lock (non-angling)	SL42126WH
(non-angling)	42126WH

ANGLING HEAD WRENCH

Wrench	43032
--------	-------



Angling



Slide-on

MICRO-ADJUSTABLE ANGLING HANDLES

Clip-on Angling 10"	45006CA
Clip-on Angling 7 3/4"	45007CA
S-Lock Micro-Adjustable Clip-on Angling 8" (cervical use only)	SL45010A



Non-Angling

MICRO-ADJUSTABLE NON-ANGLING HANDLE

Clip-on (non-angling) 10 3/4"	45006STC
-------------------------------	----------

Angling Handles

- Precise blade positioning and Uncompromised Exposure
- Low-profile reduces snagged sutures and sleeves
- Superior strength, spring loaded clip-on, joint will not fall off frame



S-Lock

SLIDE-ON JOINT AND 8" HANDLES



Slide-on Joint

Screw down, Slide-on Joint provides extra controlled blade placement.

Slide-on Joint 1/2" x 1/4"	42125N
S-Lock Angling Handle	SL45003AS
S-Lock Handle	SL45003L
Angling Handle	45003AS
Non-Angling Handle	45003L

Adapter Handles

Our competitive adapter handles enable you to adapt any Thompson interchangeable blade to a Bookwalter, Omni and Synthes retractor.



BOOKWALTER ADAPTER HANDLES

Adapts any Thompson Interchangeable Blade to the Bookwalter Retractor.

S-Lock Angling	SL45005AL
Angling	45005AL
Non-Angling	45005L



OMNI ADAPTER HANDLES

Adapts any Thompson Interchangeable Blade to the Omni Retractor.

S-Lock Angling	SL45004AL
Angling	45004AL
Non-Angling	45004L



SYNTHEs ADAPTER HANDLES

Adapts any Thompson Interchangeable Blade to your Synthes SynFrame or ProAccess Retractor System.

S-Lock Angling	SL45014AL
Angling	45014AL
Non-Angling	45014L



Easily attaches to a retractor blade with a removable Lite Clip.



Lite Wand Xe easily clips to frame or any Thompson retractor blade

Retractor Lite Xe easily clips on to any Thompson Retractor blade

Lite Clip

Replace Your Headlight with the Lite Wand Xe or Retractor Lite Xe

The Lite Wand Xe and Retractor Lite Xe increase exposure by adding illumination and eliminating headlamps and shadows. Low-profile, the Lite Wand Xe and Retractor Lite Xe easily clip on and direct cool, bright light into the incision. Additionally, the bendable gooseneck allows the light to reach the deepest, hard to see cavities improving illumination where it is needed most.

RETRACTOR LITE XE KITS

Retractor Lite Xe with ACMI Cable	40001RX
Retractor Lite Xe with Storz Cable	40002RX
Retractor Lite Xe with Wolf Cable	40004RX
Retractor Lite Xe with Olympus Cable	40019RX

LITE WAND XE KITS

Lite Wand Xe with ACMI Cable	40001X
Lite Wand Xe with Storz Cable	40002X
Lite Wand Xe with Wolf Cable	40004X
Lite Wand Xe with Olympus Cable	40019X

ACCESSORIES

Lite Clip (included in Retractor Lite Xe and Lite Wand Xe Kits)	40026
---	-------

Instrument Case included in kits and clip

Standardize Your Bed Rail with the Table Adapter

The Jackson Frame Adapter easily connects to Jackson Spine tables to add a standard bed rail for applying a table mounted retractor system to your operation.



TABLE ADAPTER

Jackson Spine Frame Adapter 41927

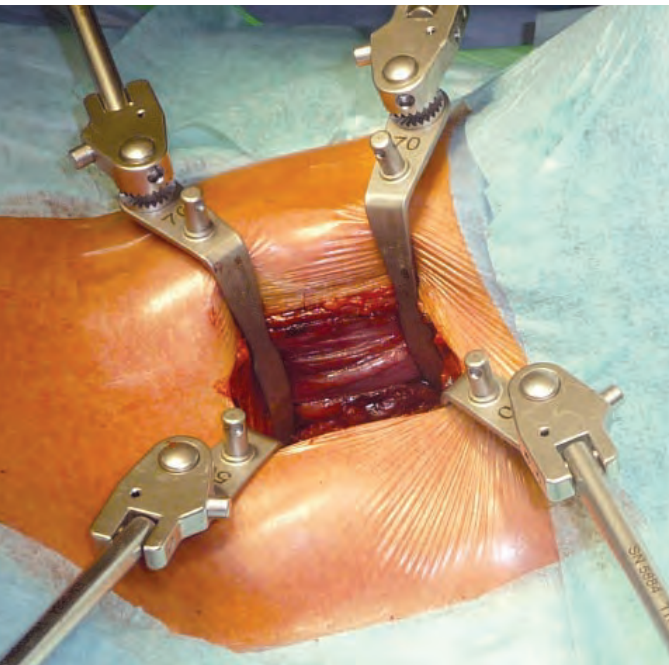
Extend Your Rail

Apply a Rail Extender to your OR table to increase your rail length or width and provide more attachment options for the rail clamps.



RAIL EXTENDER

Rail Extender 15" (2 required for CCA use)	5844
Rail Extender 14" long with 2 1/4" offset (helpful for obese patients)	41917
Rail Extender 22"	41929



CCA Retractor

The CCA Retractor was designed to achieve superior, Uncompromised Exposure of the cervical spine during decompression and/or fusion (ACDF) and arthroplasty procedures to treat spinal instability and nerve or spinal cord impingements.

Traditional minimally invasive retractor systems limit access and visualization through rigid, tube-shaped openings which restrict multi-level access and compromise overall exposure. Additionally, many open retractor systems may require extensive retraction to reach optimal anterior cervical exposure.

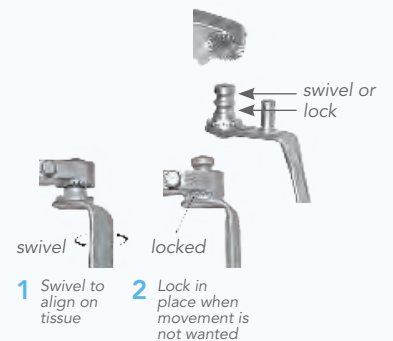
Exclusive Features

The Uncompromised Exposure provided by the CCA Retractor allows for unsurpassed visualization of the cervical spine and delivers faster, more precise operations with quicker recovery times—ultimately, maximizing the patient's benefits.



BONE LEVERS

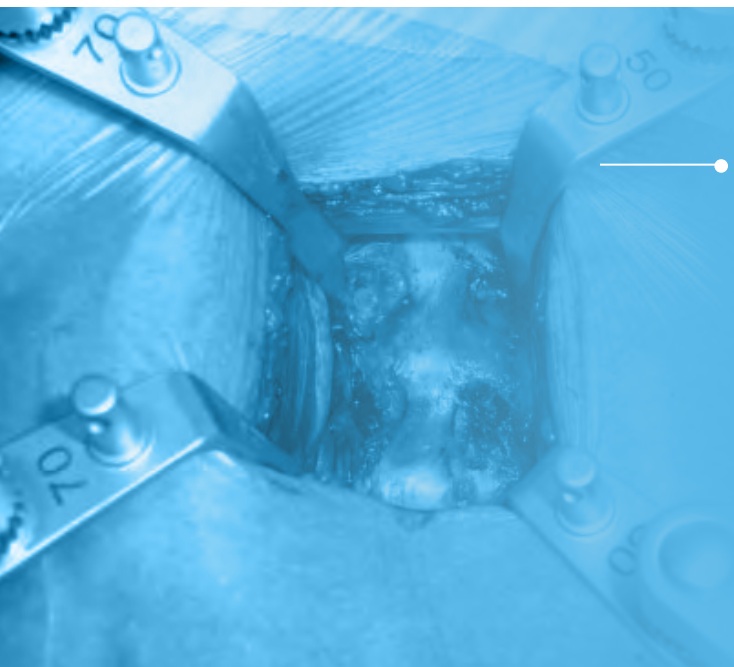
Defined distal end engages anatomy and prevents blades from sliding anteriorly.



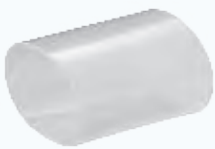
- 1 Swivel to align on tissue
- 2 Lock in place when movement is not wanted

S-LOCK TECHNOLOGY for Bone Levers

The CCA Retractor utilizes S-Lock Technology. Swivel aligns on tissue and locks when swivel is not desired, enabling precise blade placement.



- Unlike any other system, the CCA Retractor has independent retractor blades that engage the patient's anatomy and expand visualization with minimal retraction and maximum control. Single or multilevel exposure is easily achieved while maintaining the benefits of a minimally invasive and open approach.



SILICONE SLEEVE

Clear and radiolucent, the Silicone Sleeve prevents soft tissues and fluids from obstructing surgical exposure while also protecting soft tissues from drying out or becoming infected. The Silicone Sleeve fits closely around the perimeter of the bone levers and expands as the blades are retracted.



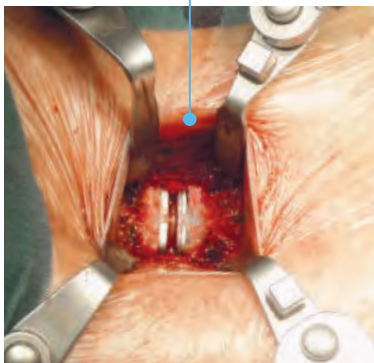
INDEPENDENT FRAME ARMS

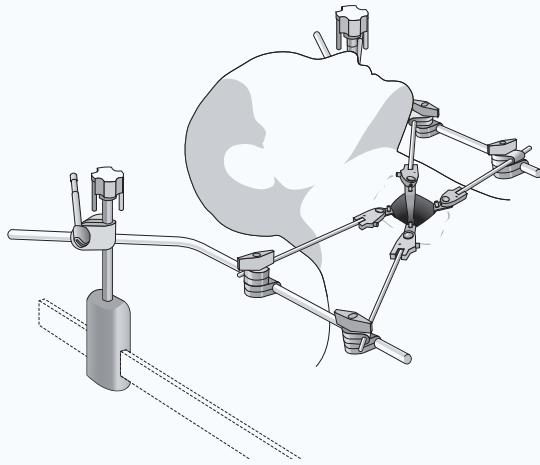
Allow for safe, versatile retraction on all patient sizes and enables independent retraction of the carotid sheath and esophagus.



DEPTH GAUGE

To help select the appropriate blade depth, the CCA Retractor includes a depth gauge (46521) that measures depths up to 100mm.





PATIENT BENEFITS

- Reduced operation time
- Reduced risk of esophageal & nerve injury
- Faster recovery

SUPERIOR, UNCOMPROMISED EXPOSURE

- Increases surgical accuracy
- Reduces operation time
- Independent, exact blade placement

SAFE AND LOW PROFILE

- Independent blade retraction prevents patient injury
- Low profile handles increase working space
- Blades and handles float with the movement of spine during operation

VERSATILE AND COST EFFECTIVE

- Better exposure equals shorter operating time and faster patient recovery
- Applicable to operations requiring single or multilevel exposure
- Independently adjustable arms accommodate all patient sizes

CCA Technique

ACHIEVE EXCELLENT EXPOSURE

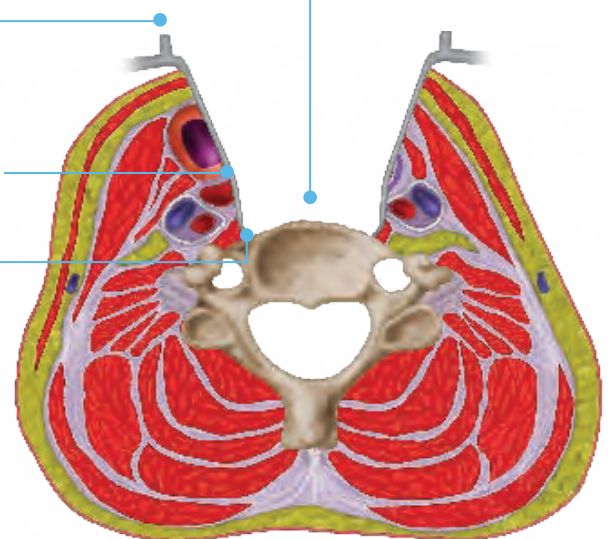
- The CCA Retractor is designed to expose the anterior surface of the cervical spine. After dissection, the carotid artery is gently retracted laterally with the carotid sheath. Medially, the trachea and esophagus may be gently retracted away and the anterior surface of the spine can be palpated.

OBTAIN PRECISE, STABLE RETRACTION

- Since the CCA blades are independently adjustable, special attention to retraction of the delicate anatomy is easy to accomplish. Each blade may be placed precisely where retraction is needed using a quick and easy manipulator handle.
- The CCA Blades should be properly placed above the bodies of the longus colli muscles and away from the tracheoesophageal groove.
- Pointed blade tips engage the spine for stable retraction that will not rise up. Blades may be locked to independent handles and retracted back in any direction and secured to eliminate swivel.

MAINTAIN LOW PROFILE, UNCOMPROMISED EXPOSURE

- As the blades retract, the hinged handles allow the blade to angle and float with the movement of the spine during the operation. Blades require little to no repositioning to maintain phenomenal exposure throughout the procedure.



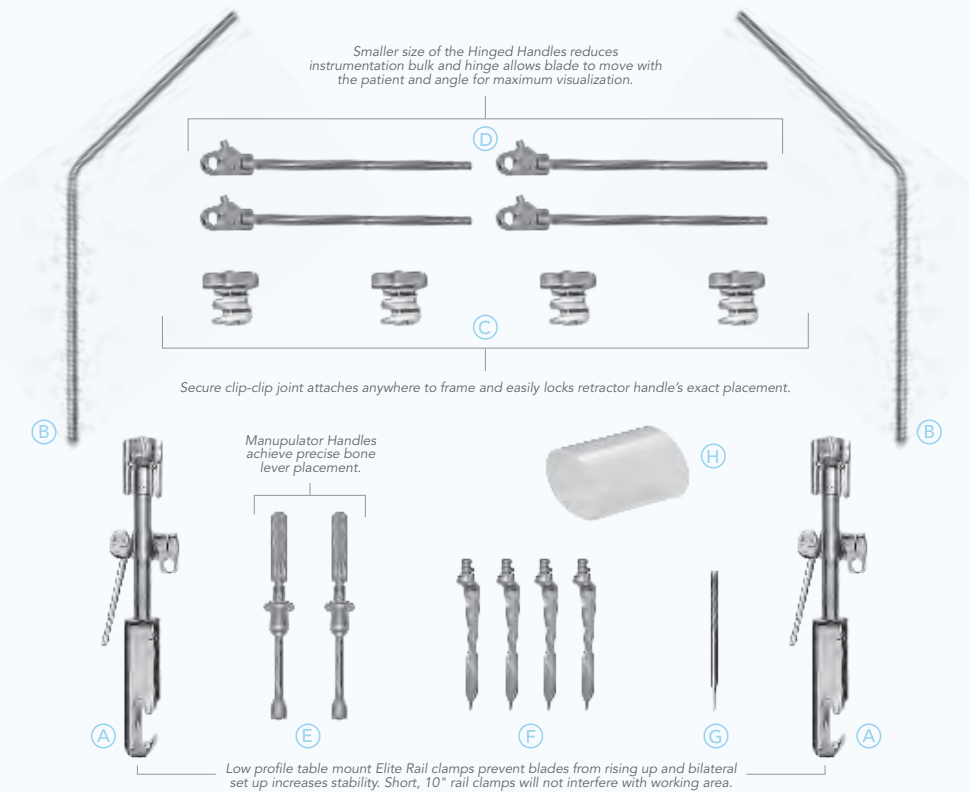
CCA Retractor Frame and Blades

FRAME:

Low profile and stable, the CCA Retractor frame provides safe, independent retraction of handles and blades. The dual rail clamps may be positioned at the patient's head to avoid interference with the C-Arm and the lateral arms may be adjusted to accommodate all patient sizes.

BLADES:

Simple and low profile, the CCA blades were designed to engage the vertebra using a tapered, bone lever shaped distal end. Strong and narrow, the blades are easily manipulated and driven into the vertebra for exact placement. The blades are incorporated with patent pending S-Lock™ technology which allows them to lock to retractor handles and secure in any orientation for consistent retraction. Hinged handles retract the blades back while angling them for uncompromised, low profile exposure.



CENTRAL CERVICAL ACCESS RETRACTOR

QTY.	ITEM DESCRIPTION	PART #
	Central Cervical Access Retractor	80056
(A) 2	Elite II Rail Clamp with one 3/8" Cam Joint 10"	41902S
(B) 2	Angled Arm 17" (7" x 10") 3/8"	44117
(C) 4	Clip-Clip Joint 3/8" x 1/4"	42123
(D) 4	S-Lock Hinged Handle 8"	SL45003LH
(E) 2	Manipulator Handle	42128AC
(F) 4	Bone Lever 14mm x 40mm	SL46982AC
	4 Bone Lever 14mm x 50mm	SL46983AC
	4 Bone Lever 14mm x 60mm	SL46984AC
	4 Bone Lever 14mm x 70mm	SL46985AC
	4 Bone Lever 14mm x 80mm	SL46986AC
(G) 1	CCA Depth Gauge	46521
(H) 2	Silicone Sleeve - Large	64049
	1 Instrument Case - CCA	50000CCA

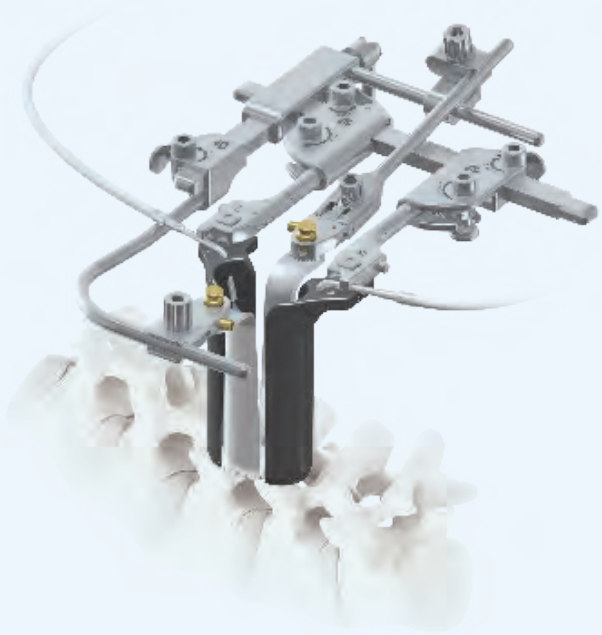
CCA RETRACTOR EXPANSION KIT

QTY.	ITEM DESCRIPTION	PART #
	CCA Retractor Expansion Kit	80057
(C) 4	Clip-Clip Joint 3/8" x 1/4"	42123
(D) 4	S-Lock Hinged Handle 8"	SL45003LH
(E) 4	Bone Lever 14mm x 40mm	SL46982AC
	4 Bone Lever 14mm x 50mm	SL46983AC
	4 Bone Lever 14mm x 60mm	SL46984AC
	4 Bone Lever 14mm x 70mm	SL46985AC
	4 Bone Lever 14mm x 80mm	SL46986AC
	1 Instrument Case - CCA	50000CCA

ACCESSORIES

ITEM DESCRIPTION	PART #
(H) Silicone Sleeve - Large (Single Use)	64049
Silicone Sleeve - Small (Single Use)	64047
Rail Extender 15" (2 required for CCA use)	5844

To use the CCA Frame with our standard anterior cervical blades, or to use the CCA's Bone Levers with the Spine Frame, please contact your account manager.



Uncompromised MIS Posterior Lumbar Exposure

The MIS Posterior Lumbar Access (PLA) System allows spine surgeons to accomplish minimal access with maximum visualization. Utilizing a versatile frame platform, the system provides flexible, independent retraction and angling from all directions while also providing controlled and stable exposure. The PLA is the solution to obtaining Uncompromised MIS Exposure for a variety of posterior lumbar approaches and procedures.

- Provides excellent exposure for Transforaminal Lumbar Interbody Fusion, Posterior Lumbar Interbody Fusion, Decompression, and Pedicle Screw Fixation.

Exclusive Features

The PLA System provides excellent exposure for posterior lumbar procedures. The system includes an MIS Spine Frame specific to MIS access needs that can be customized by adding recommended PLA blade kits.



MIS SPINE FRAME BASE

- Independent 30° angling without blade dive
- Independent retraction in 2 directions
- Quick connect T-Handle makes adjustments easy
- Two sterile mount options provide versatility



ADD ON MEDIAL/LATERAL FRAME BARS

- U-Shaped bar allows for addition of medial and lateral retractors
- L-Shaped bar allows for the addition of medial or lateral retractor
- Easy to add or remove from frame rack as needed for different exposures

Allows for MIS tubular exposures and mini-open split tube exposures with the flexibility to use 2, 3, or 4 radiolucent blades at a time.



Low profile two blade exposure option provides tubular or split tube visualization

OR



Add independent attachments to create four blade exposures and achieve lateral visualization

Thompson MIS Spine Frame

THE MIS SPINE FRAME IS THE PLATFORM FOR THE PLA BLADES AND ACCESSORIES.

Select a frame below and add blades and accessories from the following pages to complete the system.



MIS Spine Frame base



MIS SPINE FRAME

QTY.	ITEM DESCRIPTION	PART #
	MIS Spine Frame*	81030
(A)	1 Elite II Rail Clamp with 1 Cam Joint 16"	41902ACL
(B)	1 MIS Spine Articulating Arm	42138S
(C)	1 MIS Spine Frame Rack 200mm	60010
(D)	1 MIS Spine Frame Left Arm	60009
(E)	1 MIS Spine Frame Right Arm	60008
(F)	1 MIS Spine Frame U-Bar Add-on	47212
(G)	1 MIS Spine Frame L-Bar Add-on	47213
(H)	1 1/4" Side Clip x 1/4" Slide with Thumb Screw	47205T
(I)	1 S-Lock Anging Handle 5"	SL45002AS
(J)	1 S-Lock Interchangeable Head with 1/4" Clip	SL45012
(K)	2 T Handle 3/16" Hex Key	60020
	1 MIS Spine Frame Instrument Case (not shown)	50000MSF

*Offers Caudal/Cephalad and Medial/Lateral retraction
Comes with organized instrument case

MIS SPINE FRAME BASIC

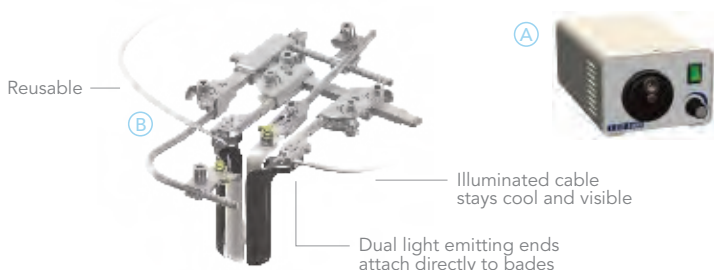
QTY.	ITEM DESCRIPTION	PART #
	MIS Spine Frame Basic**	81030B
(A)	1 Elite II Rail Clamp with 1 Cam Joint 16"	41902ACL
(B)	1 MIS Spine Articulating Arm	42138S
(C)	1 MIS Spine Frame Rack	60010
(D)	1 MIS Spine Frame Left Arm	60009
(E)	1 MIS Spine Frame Right Arm	60008
(K)	1 T Handle 3/16" Hex Key	60020
	1 MIS Spine Frame Instrument Case (not shown)	50000MSF

**Offers Caudal/Cephalad and Medial/Lateral retraction
Comes with organized instrument case

The MIS Spine Frame is recommended for use with the PLA blade kits on the next pages.

Illumination

Add LED lights for low profile, better visualization.



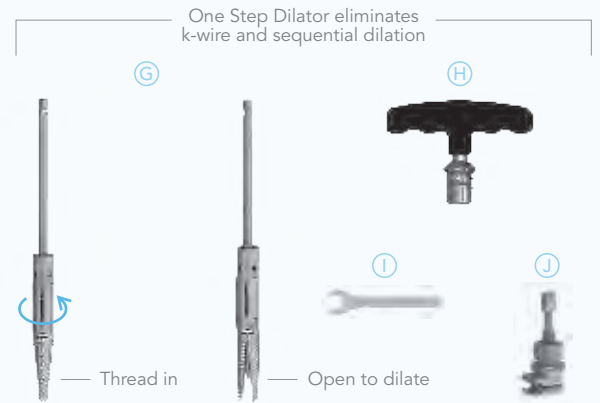
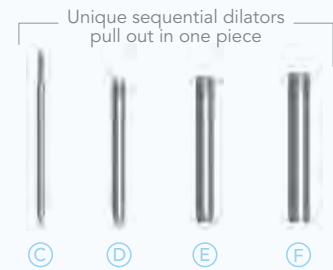
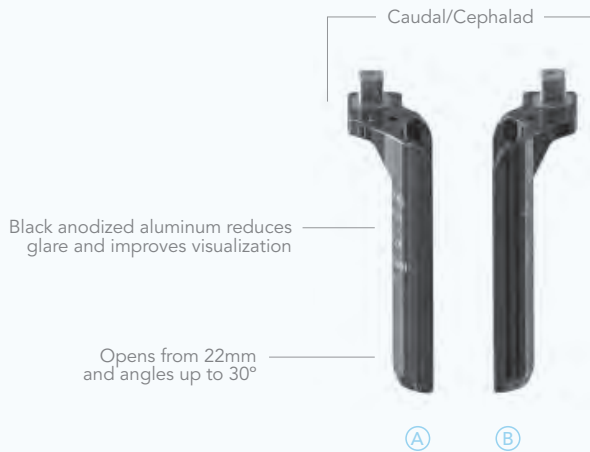
PLA ILLUMINATION KIT

QTY.	ITEM DESCRIPTION	PART #
	PLA Illumination Kit*	40001MIS
(A)	1 LED Light Source	LLS-2000
(B)	1 PLA MIS Retractor Lite LED	40002MIS

*MIS Retractor Lite LED fits in 50000MSF with MIS Spine Frame

MIS Posterior Lumbar Access Caudal and Cephalad Blade Kits

All Posterior Lumbar Access blades are radiolucent and available in depths of 40mm-120mm to meet all patient sizes.



Begin with Caudal/Cephalad blades and add a dilator kit of choice with corresponding instrument case

PLA CAUDAL/CEPHALAD BLADE KIT

QTY.	ITEM DESCRIPTION	PART #
	PLA C/C 22mm Blade Kit	81022
(A) 1	Caudal/Cephalad 22mm x 40mm	45924R
(B) 1	Caudal/Cephalad 22mm x 40mm	45924L
1	Caudal/Cephalad 22mm x 50mm	45925R*
1	Caudal/Cephalad 22mm x 50mm	45925L*
1	Caudal/Cephalad 22mm x 60mm	45926R*
1	Caudal/Cephalad 22mm x 60mm	45926L*
1	Caudal/Cephalad 22mm x 70mm	45927R*
1	Caudal/Cephalad 22mm x 70mm	45927L*
1	Caudal/Cephalad 22mm x 80mm	45928R*
1	Caudal/Cephalad 22mm x 80mm	45928L*
1	Caudal/Cephalad 22mm x 90mm	45929R*
1	Caudal/Cephalad 22mm x 90mm	45929L*
1	Caudal/Cephalad 22mm x 100mm	45930R
1	Caudal/Cephalad 22mm x 100mm	45930L
1	Caudal/Cephalad 22mm x 110mm	45931R
1	Caudal/Cephalad 22mm x 110mm	45931L
1	Caudal/Cephalad 22mm x 120mm	45932R
1	Caudal/Cephalad 22mm x 120mm	45932L

*Included in PLA Caudal/Cephalad Basic Blade Kit 81022B

NOTE: Instrument Case not included. Add Case #50000PLA or #50000PLAO based upon dilator style selected.

PLA SEQUENTIAL DILATOR KIT (Sequential Dilators)

QTY.	ITEM DESCRIPTION	PART #
	PLA Dilator Kit	81010
(C) 1	Dilator #1	45831
(D) 1	Dilator #2	45832
(E) 1	Dilator #3	45833
(F) 1	Dilator #4	45834

PLA Dilator Kit fits in blade instrument case 50000PLA (not included).

PLA BLADE AND SEQUENTIAL DILATOR CASE

PLA Instrument Case (not shown) 50000PLA

PLA ONE STEP DILATOR KIT

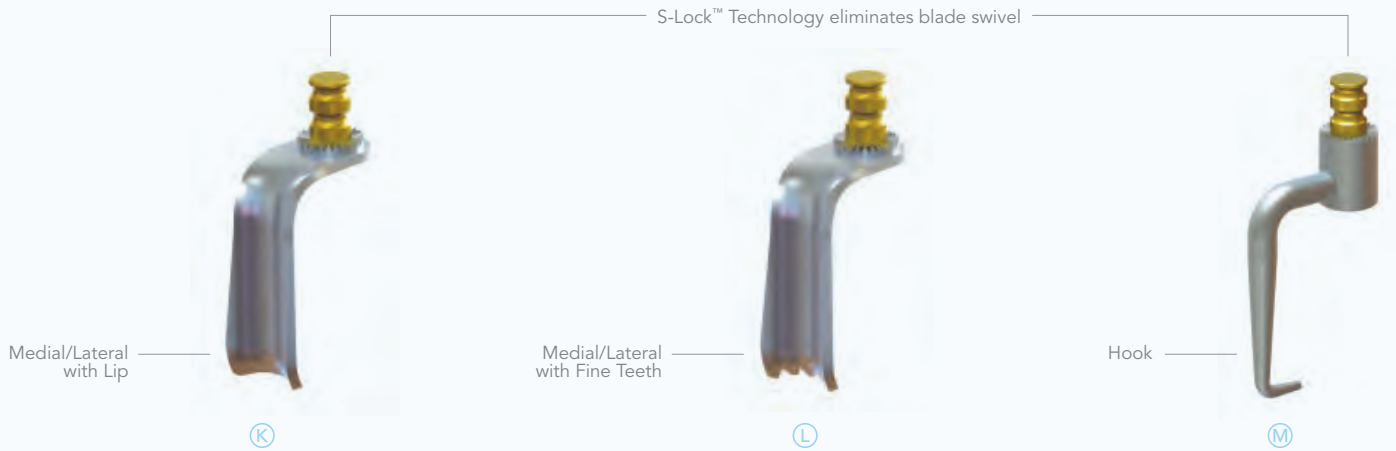
QTY.	ITEM DESCRIPTION	PART #
	One Step Dilator Kit	81012
(G) 1	One Step Dilator 22mm	01-01004
(H) 1	One Step Dilator T-Handle	01-02015
(I) 1	One Step Dilator Wrench	01-01006
(J) 1	One Step Dilator Connector	42163

PLA BLADE AND ONE STEP DILATOR CASE

PLA and One Step Dilator Case 50000PLAO

MIS Posterior Lumbar Access Medial and Lateral Blade Kits

Medial and Lateral blades are offered in a variety of interchangeable styles. Blades are made from strong, radiolucent titanium and are available in depths of 40mm-120mm. Medial and Lateral Blades utilize S-Lock Technology to eliminate blade swivel.



Add Medial and Lateral blade kits to prevent muscle creep & expand exposure

PLA M/L W/LIP BLADE KIT

QTY.	ITEM DESCRIPTION	PART #
	PLA M/L with Lip Blade Kit	SL81033
Ⓚ 2	Medial/Lateral w/lip 13.5mm x 40mm	SL46704AT
2	Medial/Lateral w/lip 13.5mm x 50mm	SL46705AT*
2	Medial/Lateral w/lip 13.5mm x 60mm	SL46706AT*
2	Medial/Lateral w/lip 13.5mm x 70mm	SL46707AT*
2	Medial/Lateral w/lip 13.5mm x 80mm	SL46708AT*
2	Medial/Lateral w/lip 13.5mm x 90mm	SL46709AT*
2	Medial/Lateral w/lip 13.5mm x 100mm	SL46710AT
2	Medial/Lateral w/lip 13.5mm x 110mm	SL46711AT
2	Medial/Lateral w/lip 13.5mm x 120mm	SL46712AT

*Included in PLA M/L with Lip Basic Blade Kit SL81033B

NOTE: Instrument Case not included. Use Case #50000PLA or #50000PLAO based upon dilator style selected.

PLA M/L W/FINE TEETH BLADE KIT

QTY.	ITEM DESCRIPTION	PART #
	PLA M/L with Fine Teeth Blade Kit	SL81035
Ⓛ 2	Medial/Lateral w/fine teeth 13.5 x 40mm	SL46604ATT
2	Medial/Lateral w/fine teeth 13.5 x 50mm	SL46605ATT*
2	Medial/Lateral w/fine teeth 13.5 x 60mm	SL46606ATT*
2	Medial/Lateral w/fine teeth 13.5 x 70mm	SL46607ATT*
2	Medial/Lateral w/fine teeth 13.5 x 80mm	SL46608ATT*
2	Medial/Lateral w/fine teeth 13.5 x 90mm	SL46609ATT*
2	Medial/Lateral w/fine teeth 13.5 x 100mm	SL46610ATT
2	Medial/Lateral w/fine teeth 13.5 x 110mm	SL46611ATT
2	Medial/Lateral w/fine teeth 13.5 x 120mm	SL46612ATT

*Included in PLA M/L with Fine Teeth Basic Blade Kit SL81035B

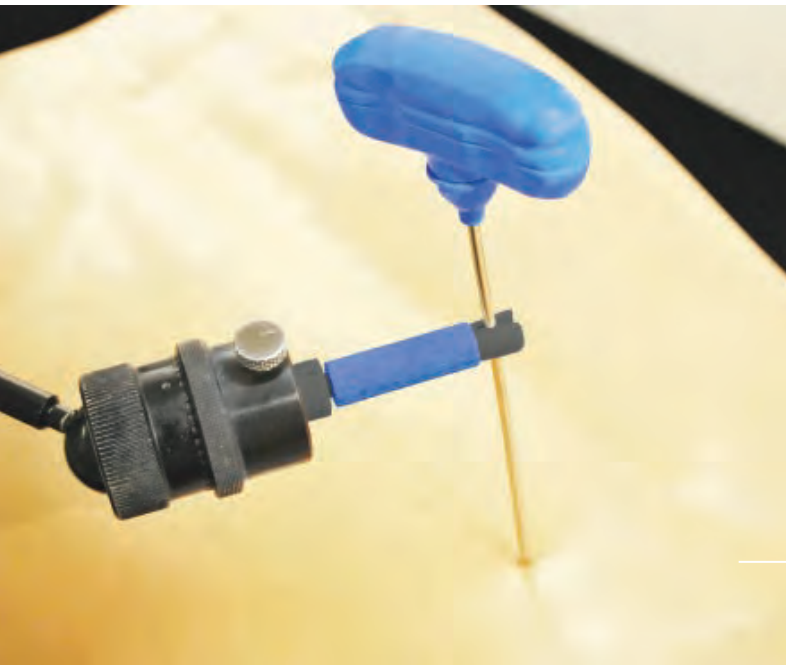
NOTE: Instrument Case not included. Use Case #50000PLA or #50000PLAO based upon dilator style selected.

PLA HOOK BLADE KIT

QTY.	ITEM DESCRIPTION	PART #
	PLA Hook Blade Kit	SL81031
Ⓜ 1	Hook 40mm	SL45764
1	Hook 50mm	SL45765*
1	Hook 60mm	SL45766*
1	Hook 70mm	SL45767*
1	Hook 80mm	SL45768*
1	Hook 90mm	SL45769*
1	Hook 100mm	SL45770
1	Hook 110mm	SL45771
1	Hook 120mm	SL45772

*Included in PLA Hook Basic Blade Kit SL81031B

NOTE: Instrument Case not included. Use Case #50000PLA or #50000PLAO based upon dilator style selected.



Min-Rad: Minimize Radiation

The Min-Rad System reduces radiation exposure to the surgeon by providing an extra hand for holding targeting needles and other narrow lumened instruments during fluoroscopic imaging. The Min-Rad arm is stable enough to hold a needle static yet flexible enough to allow the surgeon to manipulate the needle by hand without disconnecting the arm.

● *The Min-Rad System is more accurate and stable than the human hand.*

Exclusive Features

The Min-Rad System provides complete range of motion and adjusts instantly while maintaining the needle's position to minimize unnecessary radiation exposure during imaging.



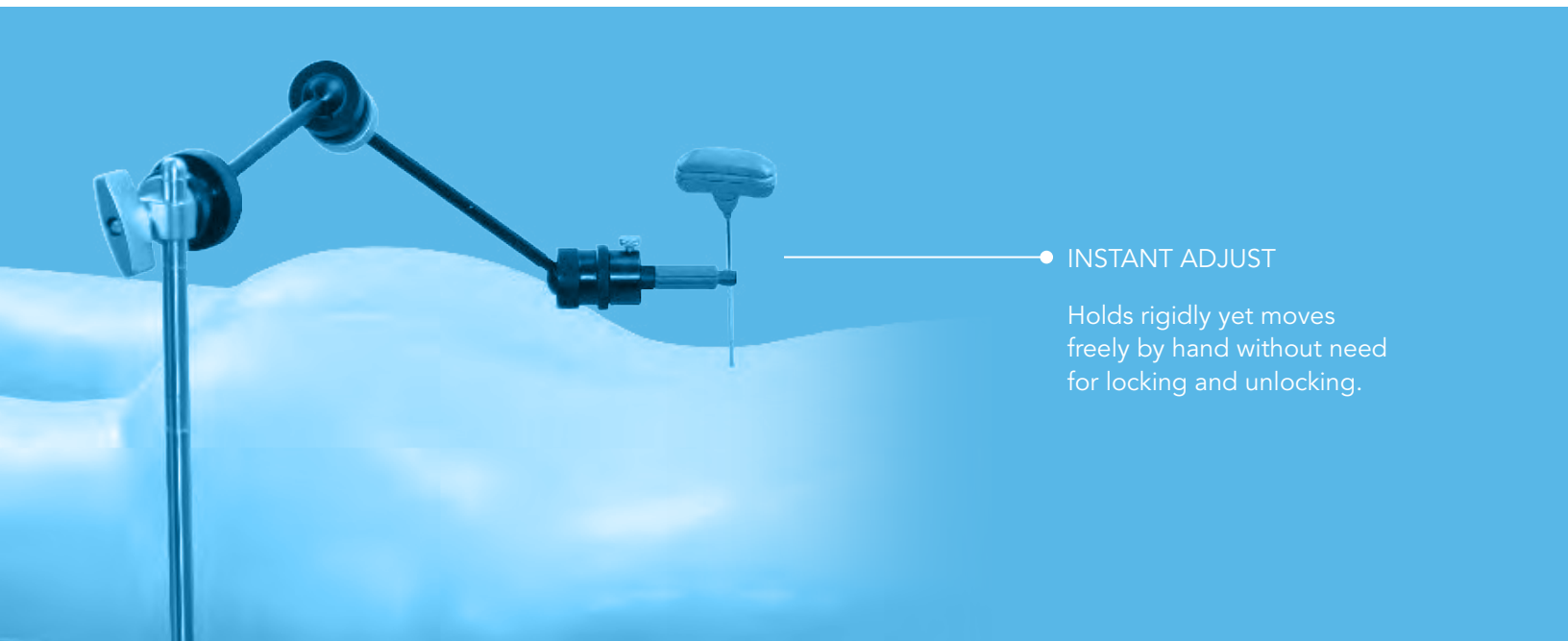
STAY-PUT ARM

The Stay-Put Arm features triple joints which allow for unrestricted range of motion during needle positioning.



EASY TO USE

- Attach Min-Rad Clip to the needle
- Move needle in soft tissue to targeted position
- Release hand from needle and step back to image



● INSTANT ADJUST

Holds rigidly yet moves freely by hand without need for locking and unlocking.



Min-Rad System is excellent for use in pedicle screw targeting

MIN-RAD SYSTEM

QTY.	ITEM DESCRIPTION	PART #
	Min-Rad System	80037
(A) 1	Stay-Put Arm*	42137H*
(B) 1	Power Rail Clamp	41950
(C) 1	Min-Rad Clip for 3 - 3.5mm Needle**	33160**
(D) 1	Instrument Case - Min Rad Clip	50000RC
(E) 1	Carrying Case - Min-Rad System	50001RL

* The Stay-Put Arm requires a sterile cover measuring at least 4" x 36"

** If using larger or smaller needles, please call for alternate size clips




10170 East Cherry Bend Road
Traverse City, Michigan 49684
phone: 231.922.0177
fax: 231.922.0174

thompsonsurgical.com

Made in the USA

© 2012 Thompson Surgical Instruments, Inc. Traverse City, Michigan. Printed in U.S.A.

™ S-Lock  is a trademark of Thompson Surgical Instruments, Inc.
Patents: US5902233, US5897087, US6017008, US5984865, US7338442, US7749163, US8257255
Other patents pending.

The One Step Dilator (01-01004, 01-02015, 01-01006) is manufactured by Thompson MIS and distributed by Thompson Surgical Instruments.
The MIS Retractor Lite LED (40002MIS) and LED Light Source (LLS-2000) are manufactured by Sunoptic Technologies® and distributed by Thompson Surgical Instruments.

CE0470

**For a FREE TRIAL
call 1.800.227.7543**

Free trial valid for U.S. customers only.
International customers please call for more information.