

2012 MHS

MARS HEATING SPECIAL

- Motors
- Components
- Service & Installation

MARS[®]

Delivering Confidence

MARS[®] USA Capacitors



see pg. 18



The MARS[®] 780 Series

see pgs.
19-21



Introducing... SunSlinger Motors

70°C, 158°F Ambient

see pg. 36

Terms & Conditions

1. FREIGHT POLICY

Any order totaling **\$2,000** net will be shipped freight prepaid to any one destination in the Continental U.S.A. Method of shipment is at the discretion of MARS.

Special shipments such as air freight are available at customer's expense for customers requesting such shipments.

Back orders will be shipped according to the freight terms of the original order.

2. Minimum order requirement: \$2,500.

3. Mark order "MHS" (MARS Heating Special) and send to:

MARS
250 Rabro Drive East
Hauppauge, NY 11788

or

Call TOLL FREE **(800) 445-4155**

or

FAX 24 hours a day **(631) 348-7160**

or

Enter your order on our website at **www.marsdelivers.com**

Request your customer ID & password from our IT department to have access to this feature.

4. The 2012 MARS Heating Season Special expires on November 30, 2012. Your MHS orders must be received by this date. MHS orders will be released immediately or, at your direction, any time prior to December 1, 2012.

5. Any MARS product not shown in this special may be included on your MHS order excluding copper fittings and copper tubing.

6. Payment terms:

Minimum order	Option 1	Option 2
\$5,000	30/60 days	1% 10 days
\$10,000	30/60/90 days	1.5% 30 days
\$25,000	30/60/90 days	2% 30 days
\$50,000	60/90/120 days	2.5% 30 days

Be sure to note payment option. If not noted, Option 1 will be implemented.

Cash discount extended to payments postmarked on or before due dates only.

©2012 MOTORS & ARMATURES, Inc.

All rights reserved. This catalog may not be reproduced in whole or in part in any form without written permission from Motors & Armatures, Inc. MARS is a registered trademark of Motors & Armatures, Inc. MARS part numbers are trademarks of Motors & Armatures, Inc.

Effective August 6, 2012

Table Of Contents

Heating Products	Page No.
Change Over Switches	10
Contactors 30 Amp 2 Pole	13
EasyHeat Heating Cable	12
Electric Heat Restraining Kits	8
Electric Heat Sequencers, MARS	9
Fan & Limit Switches MARS	7
Fan & Limit Switches MARS2	13
Fan Centers, MARS	6
Furnace Blocks	14
Furnace Legs, Adjustable	14
Heat Pump Defrost Thermostats	10
Heat Pump Risers	14
High Limit Thermostats	9
Hot Surface Igniters	4-5
Solid State Time Delay Timers	10
Switching Relays	10
Thermocouples, MARS2	13
Thermostat Guards	11
Time Delay Relays	9-10
Transformers, MARS	6

MARS Components	
Capacitors	15-18
Condensate Pumps	22-23
Contactors MARS 780 Series	19-21
Crankcase Heaters	26-27
Klixon Pressure Switches	24-25
Turbo Capacitors & Tester	17

MARS2 Components	
Capacitors	30-31
Contactors	29
Pressure Switches	32
Switching Relays	31
Time Delay Relays	33
Watt Motors	33

Motors	
3.3" Commercial Refrigeration Motor	37
Condenser Fan Motors	34-36, 39, 42-43
Direct Drive Blower Motors	34-35, 39
Draft Inducer Motors	38
Elco Motors	52
FASCO Motors	38, 53-55
Furnace Blower Motors	34-35, 43
Inverter Duty Motors	60
Marathon Motors	56-59
MARS Brand Motors	34-38
SOS Motors	41
Wizard Motors	40-41

ECM Motors	Page No.
ECM Fan/Motor System	49
ECR One ECM Evap Condenser Fan Motor	47
ARKTIC 59	48
ARKTIC 142	47
ECM Motors	44-51
ECM 44 Frame Motor	49
ECM Motor Accessories	45, 51
ECM Speed Controllers	50
Evergreen AH	45
Evergreen IM	45
Evergreen CM	50
MARS 2 Speed Controllers	48
SSC Motors	47
Unitronix Double Duty Motors	46

airMARS	
Blower Accessories	61
Direct Drive Blower Wheels	62
Fan Blades	61
Gates V Belts	63-64

Service & Installation	
A/C Condenser Pads	65
A/C Mounting Brackets	65
A/C Whips	65
Anti Vibration Pads	68
Clear Tubing	69
Disconnects, MARS	65
Emergency Switch Covers	71
Fuses & Fuse Holders (Zebra)	64
Gloves, Latex	70
Hose Clamps	69
LA-CO Products	66
Leak Detectors	67
Pan Seal	66
Permatex Sealants	71
Putty, MARS	70
PVC Cement	68-69
PVC Fittings & Tubing	69
Rooftop Supports	67
Scrubs In A Bucket	70
Sealant Products	71
Shop Towels	70
Spray Bottle	66
Spray Weld	69
Tape, Duct	69
V-belts (Gates)	63-64
Wasp & Hornet Spray	70
WD-40	70
Wire Connectors	68
Zoom Spout Products	66

The Hot Zone...

MARS Hot Surface Igniters

Gas Furnace Igniters

- Compatible with 17, 34, and 45 second warm-up modules
- Full 115/120 volt rated (no step down module required for silicon nitride)
- Wire nuts or OEM plugs and mounting hardware included



Direct Replacements

Flat Silicon Carbide Price	Robertshaw	Supco	White-Rodgers	Industry Recognized Reference	
67914	\$ 10.99	41-401	SIG401	767A-369	41-401
67915	10.99	41-402	SIG402	767A-371	41-402
67916	10.99	41-403	SIG403	767A-366	41-403
68017	10.99	41-404		767A-382	41-404
67917	10.99	41-405	SIG405	767A-361	41-405
67925	10.99	41-406	SIG406	767A-374	41-406
67918	10.99	41-407	SIG407	767A-376	41-407
67919	10.99	41-408	SIG408	767A-372	41-408
67920	10.99	41-409	SIG409	767A-370	41-409
68016	10.99	41-410	SIG410	767A-377	41-410
68013	10.99	41-411		767A-383	41-411
68014	10.99	41-412	SIG412	767A-373	41-412
68014	10.99	41-414	SIG414	767A-384	41-414
67915	10.99	41-238			41-238
67915	10.99	41-242			41-242
68015	14.00				Rheem 62-22669-92
67909	11.25				Coleman 1474-051P / 052P
67921	11.25				Lennox 33J37
67924	10.75				Goodman B1401015 / B1401018S
67923	10.75				York 025-32625-000

Universal

Flat Silicon Carbide Price	Round Silicon Nitride Price	Robertshaw	Supco	White-Rodgers	
67900	\$11.24	41-1090	IG402K, IG403K, SIG1100		
	68040	\$13.99	41-801N	SSN2000	21D64-2

Heating Products

MHS 2012

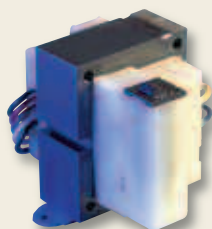
Cross Reference by OEM Furnace & Heating Igniters

OEM	OEM Part No.	MARS Part No.	1090 KIT Compatible
Amana	B1336102	67914	NO
	D99182	67914	NO
	10041601	67914	NO
	10735003		YES
Armstrong Air	38322B001	67915	YES
Carrier	LH33ZS001	67920	YES
	LH33ZS002	67920	YES
	LH33ZS003	67920	NO
	LH33ZS004	67920	NO
Clare	C238	67907, 67915	YES
	C242	67915	YES
Coleman	1474-051P	67909	NO
	1474-052P	67909	NO
Comfort Zone	150114-04-01	67925	NO
Detroit Radiant	101D	1074	YES
DMO Ind./Olsen	20834	1056, 67915	YES
	26789	1056	YES
Dornback	271W	67915	YES
Ducane	20015201	67920	YES
Enerco Tech	10399	67915	YES
Gemline	IG100	NO	NO
Glowcore	HSRK-7	67925	NO
Goodman	B1401009	68014	NO
HB Smith	50018		YES
Heat Controller	CONQUEST 80	67917	YES
Hupp Industries	9050	67915	YES
Intercity	1009604	68014	NO
LB White	120-07549	67915	YES
Lennox	33J37	67921	YES
Lochinvar	PLT2400	67925	NO
Metzger	201N	67915	YES
	201W	67915	YES
Nordyne/ Frigidaire, Maytag, Philco, Tappan, Westinghouse	632-363		YES
	902499	67924	YES
	903758		YES
Norton	201A	67914	NO
	271A	67914	NO
	201D	67917	YES
	271D	67917	YES
	201N	67915, OTHERS	YES ¹
	271N	67915, OTHERS	YES ¹
	271NM	68014, OTHERS	NO
	201W	67915, OTHERS	YES ¹
	271W	67915, OTHERS	YES ¹
	271Y	67925	NO
	271 OR 271M	67916, OTHERS	YES ¹
Perf. Schwank	108803-G1	67925	NO
Raypak	600915	67916	YES
Rheem	62-22441-01	67915, 67919	YES
	62-22669-92	68015	NO
	62-22868-82	68013	SOME
	62-22868-92	67919	YES
	62-22868-93	67919	YES
Snyder General	1380654	67916	YES
	1380672	67920	YES
	1380680	67920	YES

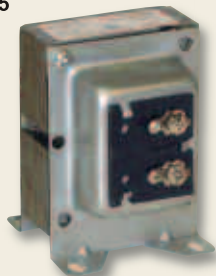
OEM	OEM Part No.	MARS Part No.	1090 KIT Compatible	
Trane	B138196P01	67916	YES	
	B144676P01	68016	YES	
	B144676P02	67918	YES	
	B340039P01	67919	YES	
	IGN0054	67919	YES	
	IGN23	67915	YES	
	IGN26	67916, 67920	YES	
	IGN30	67916, 67918	YES	
	340039P01	67915	YES	
	Trianco-Htmker	2600-359	67914	NO
Uni-Line/ Robertshaw	41-238	67907, 67915	YES	
	41-242	67915	YES	
	41-401	67914	NO	
	41-402	67915	YES	
	41-403	67916	YES	
	41-405	67917	YES	
	41-406	67925	NO	
	41-407	67918	YES	
	41-408	67919	YES	
	41-409	67920	YES	
	41-410	68016	YES	
Viessman	41-411	68013	SOME	
	41-412	68014	NO	
	9302-094	67917	YES	
	511-330-139	67920	YES	
	511-330-188	67925	NO	
	511-330-193	67916	YES	
	Weil McLain	767A-301		YES
		767A-306		YES
		767A-309	67914	NO
		767A-310		YES
		767A-350		YES
767A-352			YES	
767A-354			YES	
767A-356		67914	NO	
767A-361			YES	
767A-365			YES	
767A-371		67915	YES	
Williamson	767A-374	67925	NO	
	9050	67915	YES	
	025-27766-000	67917	YES	
York	025-27774-000	67917	YES	
	025-29043-000	67917	YES	
	025-29050-000	67917	YES	
	025-32625-000	67923	NO	
	-		YES	
Starlite	-		YES	
	-		YES	
	-		YES	
	-	67907	YES	
	-	68015	NO	
	-		YES	
	-	67909	NO	
	-		YES	
	-		YES	
	-		YES	
	-	67921	YES	
	-	67923	NO	
	-	67914	NO	
	-	67915	YES	
	-	67916	YES	
	-	67915	YES	
	-	67925	NO	
	-	67918	YES	
	-	67919	YES	
-	67920	YES ¹		
-	68016	YES		
-	68013	SOME		
-	68014	NO		

1 – The adapter brackets contained in the 1090 Kit are designed to replace these style igniters. However, in some applications only a replacement with a ceramic block identical to the OEM igniter can be used. Refer to the OEM part number in the above cross reference for the exact MARS replacement.

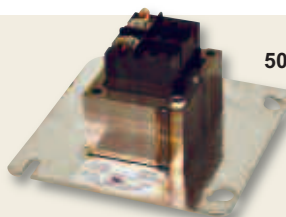
Transformers



50321
50327
50341
50375



50380



50305



Scan with Smartphone for more details.

Transformers - End Bell Type

MARS No.	Former MARS Jard No.	Voltage Primary	Voltage Secondary	VA Output	Price
50302	44522	120	24	40	\$ 8.21
50303	-	208/240	24	40	8.70
50304	44524	120/208/240	24	40	9.40
50333	44526	120/208/240	24/12/12.5	48	10.11
50314	44525	120/208/240	24	50	13.88

Transformers With Manual Reset

MARS No.	Former MARS Jard No.	Voltage Primary	Voltage Secondary	VA Output	Price
50327	44511	120/208/240/480	24	50	\$ 22.23
50321	44513	120/208/240/480	24	75	27.03
50375	-	208/240/480/575	24	75	37.75
50341	44515	120/208/240/480	24	100	63.68

Economy Plate Mount Transformer

MARS No.	Voltage Primary	Voltage Secondary	VA Output	Price
50305	120	24	40	\$ 5.87

Frame Mount

MARS No.	Former MARS Jard No.	Connection	Voltage Primary	Voltage Secondary	VA Output	Price
50352	44502	wire leads	120	24	40	\$ 6.56
50353	44503, 44506	wire leads	240	24	40	6.64
50354	44504	wire leads	120/208/240	24	40	6.61
50362	-	quick conn.	120	24	40	6.70
50363	-	quick conn.	240	24	40	7.20

Power Transformers

MARS No.	Former MARS Jard No.	Voltage Primary	Voltage Secondary	VA Output	Price
50380	44536	208/240/480	120/24	50	\$ 33.12
50381	-	208/240/480	120/24	100	75.43

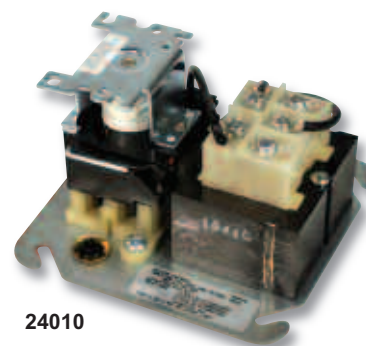
Relay/Transformer Fan Control Centers

MARS series 240 fan centers provide convenient low voltage control of one and two speed fan motors and auxiliary circuits in heating, cooling, or heating/cooling applications. Each MARS fan center is a reliable, compact unit consisting of a 24 volt transformer and a plug-in switching relay mounted on a 4" square electrical junction box cover. All line voltage connections are made inside the box with color coded pre-stripped leads. Low voltage connections are made at a convenient terminal board mounted to the transformer.

Features:

- Choice of SPDT, SPNO / SPNC or DPDT relay switching options
- UL 1585 40VA transformer
- Color coded leads
- Low voltage terminal board
- Mounts directly to 4" electrical box

40VA 3/4 HP



24010

MARS NO.	PRIMARY VOLTAGE	TRANSFORMER		CONTACT RATINGS		ROTOR	PRICE
		CONNECTIONS	SECONDARY VOLTAGE	120V AC (amps) FULL RELAY	240V AC (amps) FULL RELAY		
24010	120/208/240	Color coded leads, pre-stripped	24V	13.8	82.8	41.4	\$ 14.49
24012	120	Color coded leads, pre-stripped	24V	13.8	82.8	41.4	13.49
24013	120	Color coded leads, pre-stripped	24V	13.8	82.8	41.4	12.25

Heating Products

MHS 2012

Fan & Limit Switches

Fan Switches

- Thermostats - individually polybagged
- Close on temperature rise

2⁴⁹ each

MARS No.	Klixon Temp. Code	Temperature °F	
		Open	Close
39006	F110-2	90	110
39007	F120-2	100	120
39008	F130-2	110	130
39009	F140-2	120	140
39010	F150-2	130	150
39011	F160-2	140	160
39112	F175-2	155	175
39113	F195-2	175	195
39015	F210-2	190	210
39016	F250-4	210	250
39017	F350-4	310	350



Limit Switches

- Thermostats - individually polybagged
- Open on temperature rise

MARS No.	Klixon Temp. Code	Temperature °F		Price
		Open	Close	
39087	L130-4	130	90	\$ 2.49
39018	L140-4	140	100	2.49
39019	L150-4	150	110	2.49
39020	L160-4	160	120	2.49
39021	L170-4	170	130	2.49
39022	L180-4	180	140	2.49
39023	L190-4	190	150	2.49
39024	L200-4	200	160	2.49
39025	L210-4	210	170	3.59
39026	L220-4	220	180	2.49
39027	L230-4	230	190	2.49
39028	L240-4	240	200	2.49
39029	L250-4	250	210	2.49
39030	L270-4	270	230	2.49
39130	L290-4	290	250	2.49
39031	L300-4	300	260	2.49
39032	L325-4	325	285	2.49
39033	L350-4	350	310	3.59

Adjustable Fan & Limit Switches

- Easy dial adjustment, integral oval flange
- Six controls cover most requirements
- .25 Inch quick connect terminals
- UL and CSA listings available

8²² each



MARS No.	Type	Range °F	Diff. °F	Switching Action
39205	fan	90-130	20	close on rise
39210	fan	140-180	20	close on rise
39220	limit	135-175	40	open on rise
39225	limit	175-215	40	open on rise
39230	limit	210-250	40	open on rise
39235	limit	250-290	40	open on rise

Cross Reference Information

MARS No.	White-Rodgers No.
39205	3F05-1
39210	3F05-2
39220	3L05-1
39225	3L05-2
39230	3L05-3

Fan & Limit Switches

Manual Reset

5⁷⁵ each



- Thermostats - individually polybagged
- Open on temperature rise

MARS No.	Klixon Temp. Code	Temperature °F Open
39037	MR140	140
39038	MR150	150
39039	MR160	160
39095	MR170	170
39096	MR180	180
39097	MR190	190
39098	MR200	200
39040	MR210	210
39041	MR220	220
39042	MR240	240
39043	MR300	300

Restring Kits

Older heating elements are no longer available, your only option is to repair them using a properly sized restring kit. MARS Replacement coil kits for electric heat lets you repair strip heaters quickly and economically. MARS restring kits can be used to repair burnt out heating elements in Electric Furnaces and Heat Pump Air Handler Heating Assemblies. Each kit contains one close wound, stretch to length, resistance coil with welded terminal bolts; two each male and female ceramic terminal insulators; two each .375 and .450 inch standard ceramic bushings; two each .375 and .450 inch extra long ceramic bushings; necessary nuts, washers, and installation instructions.

Features:

- Welded terminal bolts for low resistance and long life
- Close wound coil, stretch to fit many applications
- Complete with bushings, insulators and hardware



Replacement Coil Economy Kits

MARS No.	Description	Price
34600	5000 Watt @ 240V; includes coil, insulators & hardware	\$ 4.99
34601	5000 Watt @ 240V; includes 300° fuse link, coil, insulators & hardware	5.25

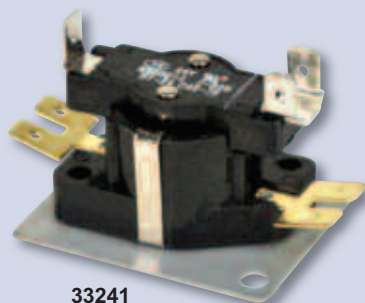
MARS NO.	WATTAGE AT				STRETCHED LENGTH				PRICE
					INCHES		METERS		
	240V	208V	480V	277V	MIN	MAX	MIN	MAX	
34602	5000	3750	—	—	44.62	127.48	1.13	3.24	\$ 7.11
34604	—	—	5000	—	61.78	176.53	1.57	4.48	7.28
34606	—	—	—	5000	59.44	169.82	1.51	4.31	8.49
34608	3500	2625	—	—	50.75	145.00	1.29	3.68	6.59
34610	—	—	3500	—	42.27	120.76	1.07	3.07	5.59
34614	2000	1500	—	—	25.90	74.01	0.66	1.88	5.37
34616	2500	1875	—	—	30.89	88.26	0.78	2.24	5.28
34620	—	—	—	2500	27.61	78.87	0.70	2.00	5.92
34622	1500	1125	—	—	17.04	48.69	0.43	1.24	4.89
34624	4500	3375	—	—	42.33	120.95	1.07	3.07	7.89
34626	—	—	4500	—	46.05	131.98	1.17	3.35	9.92
34630	—	—	2000	—	40.12	114.64	1.02	2.91	5.28
34652	6600	4950	—	—	70.56	201.59	1.79	5.12	11.20
34654	—	—	6600	—	65.39	186.71	1.66	4.74	10.32
34656	6000	4500	—	—	54.43	155.50	1.38	3.95	11.16
34658	—	—	6000	—	71.88	205.38	1.83	5.22	8.61
34660 ¹	5000	3756	—	—	25.00	70.00	—	—	6.46

(1) Larger diameter coil - 5/8"

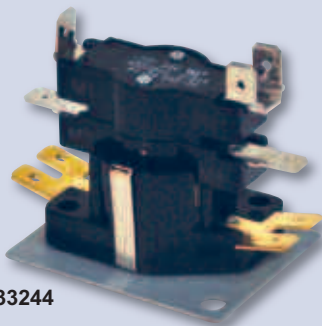
Heating Products

MHS 2012

Electric Heat Sequencers & Time Delay Relays



33241



33244

MARS No.	Control Switch Volt	Control Switch Type	Timing Seconds		Price
			On	Off	
33241	24	SPST	1 - 24	45 - 75	\$ 7.36
33242	24	SPST	30 - 75	1 - 40	7.36
33243	24	SPST	1 - 60	1 - 45	7.36
33244	24	DPST	1 - 24	45 - 75	8.42
33245	24	DPST	30 - 75	1 - 40	8.42
33246	24	DPST	1 - 60	1 - 45	8.42
33247	24	SPDT	1 - 24	15 - 75	8.42
33255	120	DPST	30 - 110	15 - 65	11.32
33256	120	DPST	20 - 70	20 - 80	11.32
33265	240	DPST	30 - 110	15 - 65	14.08
33266	240	DPST	20 - 70	20 - 80	14.08
33222	24	2-SPDT	1 - 24	45 - 75	15.52
			30 - 70	1 - 40	
33232	24	1-DPST	1 - 24	45 - 75	17.44
		1-SPST	30 - 70	1 - 40	
33233	24	2-DPST	1 - 24	45 - 75	17.44
			30 - 70	1 - 40	

High Limit Thermostats For Electric Heat

- Specifically designed for electric heat - individually bagged with accessories
- Open cup design for greater temperature sensitivity

MARS No.	Temperature °F	
	Open	Close
39310	110	90
39312	120	100
39314	130	100
39316	140	100
39318	145	105
39320	150	110
39322	155	115
39324	160	120
39326	170	130
39328	180	140
39330	190	150
39332	200	160



MARS Electric Heat Sequencers

MARS NO.	TIMINGSWITCHES		TIMINGS-ON					TIMINGS-OFF					PRICE
			M1-M2	M3-M4	M5-M6	M7-M8	M9-M10	M1-M2	M3-M4	M5-M6	M7-M8	M9-M10	
33841	1	1	1-20	-	-	-	-	40-110	-	-	-	-	\$ 5.62
33842	1	1	-	-	30 - 90	-	-	-	-	1-30	-	-	10.20
33844 ⁽¹⁾	1	2	1-20	■ 1-20	-	-	-	40-110	■ 40 - 110	-	-	-	6.71
33845	1	2	-	-	30 - 90	■ 30 - 90	-	-	-	1-30	■ 1-30	-	6.71
33832 ⁽¹⁾	2	3	1-110	■ 1-110	1-110	-	-	1-110	■ 1-110	1-110	-	-	7.15
33833 ⁽¹⁾	2	4	1-110	■ 1-110	1-110	■ 1-110	-	1-110	■ 1-110	1-110	■ 1-110	-	7.36
33848 ⁽¹⁾⁽²⁾	4	5	1-160	■ 1-160	1-160	1-110	1-160	1-160	■ 1-160	1-160	1-160	1-160	10.20

(1) M1-M2 and M3-M4 are always first switches to turn ON and to turn OFF. All other switches are random ON and random OFF

(2) #33848 - switch contacts designated F1-F2 instead of M1-M2

■ These contacts switch simultaneously

ON TIME – Elapsed time to make contacts after heater is energized (Min. to Max.) OFF TIME – Elapsed time to make contacts after heater is de-energized (Min. to Max.)

OFF Timings determined after PTC heater has been electrified for a total of 5 minutes.

MARS Solid State Delay Timers For Heating Application

MARS NO.	TYPE DELAY	DELAY RANGE	INPUT VOLTS	MAX. AMPS	APPLICATION	PRICE
32390	on break	5 min. fixed	24	1	HPSC protect*	\$ 14.65
32392	on break	adj. 6-300 sec.	19-240	1	anti-short	7.53
32387	on break	adj. 120-300 sec.	24	2	cycling, prevents	16.66
32391	on make	adj. 6 sec.-8 min.	19-240	1	adj. oil valve	7.53
32397	on make	adj. 10-1000 sec.	24	6	delay	23.60
32398	on make	adj. 10-1000 sec.	120	10	pre-purge	29.74
32383	on make	adj. 6 sec.-10 min.	120	30	high current anti-short cycle	29.35
32393	off delay	2 min. fixed	24	1	fan post purge	9.05
32377	off delay	adj. 6 sec.-20 min.	24	6	oil burner	23.23
32378	off delay	adj. 6 sec.-10 min.	120	10	post purge	32.46
32395	by pass	adj. 6-480 sec.	19-240	1	by pass control for delay period	14.98

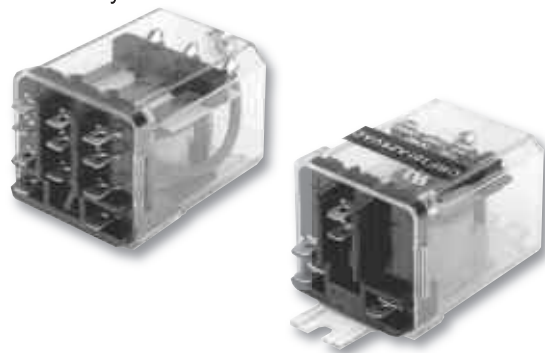


Timer Type Delay Key:
On make: Delay period starts on application of power
On break: Delay period starts at end of cycle
Off delay: Device being controlled remains on after end of cycle
By pass: Device is by passed for delay period, then restored to circuit

* Heat pump short cycle

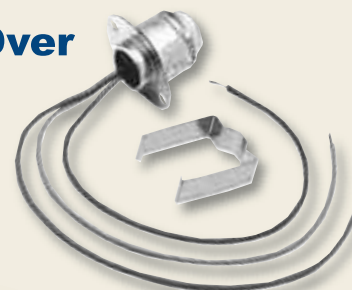
MARS Enclosed Switching Relays

MARS enclosed switching relays are heavy duty general purpose relays suitable for a variety of applications. They are commonly used in heating, air conditioning, vending machines, office machines, control panels and other general purpose applications.



Change Over Switches

13⁰² each



MARS No.	Description	Replaces
39004	leads through side	Honeywell; L6076A W/R; 752-1
39005	leads through top w/conduit hub	Honeywell; L6076-B W/R; 752-1

MARS NO.	COIL VOLTAGE	AMP RATING	SWITCH ACTION	TYPE MOUNT	PRICE
43050	24	10	SPDT	Bracket	\$ 9.82
43053	24	10	DPDT	Bracket	11.83
43054	120	10	DPDT	Bracket	11.83
43055	240	10	DPDT	Bracket	12.92
43056	24	10	3PDT	Bracket	14.10
43057	120	10	3PDT	Bracket	14.10
43058	240	10	3PDT	Bracket	14.85
43060	24	10	SPDT	Plug-in	10.31
43063	24	10	DPDT	Plug-in	11.33
43064	120	10	DPDT	Plug-in	12.34
43065	240	10	DPDT	Plug-in	12.20
43066	24	10	3PDT	Plug-in	14.62
43067	120	10	3PDT	Plug-in	14.62
43068	240	10	3PDT	Plug-in	15.07

Heat Pump Defrost Thermostats

- Specially designed for heat pumps
- Four models cover most applications

9³⁹ each



MARS No.	Open °F	Close °F	Tube O.D.
33490	80	30	3/8
33492	80	30	1/2
33494	65	30	3/8
33496	65	30	1/2

Heating Products

MHS 2012

Thermostat Guards

MARS offers a broad selection of thermostat guards. Popular models available include metal, clear plastic and opaque plastic designs. MARS thermostat guards are ideal for protecting thermostats in schools, industrial plants institutions, public facilities and other areas where unauthorized tampering could be a problem. These attractive units feature a rugged, light weight and compact design. All units supplied with key. Extra keys are available. Order part #70236 for the BTG thermostat guard key.

MARS Designer Series - Plastic Cover And Base

MARS No.	Description	Base	MARS Pack	Case Qty.	Price
70217	BTG-DK clear plastic	Dual	1	12	\$ 7.35
70219*	BTG-DO opaque plastic	Dual	1	12	12.54

MARS Universal Series

MARS No.	Description	Base	MARS Pack	Case Qty.	Price
70220	BTG-UK2 clear plastic	Dual	1	12	\$ 7.85
70223	BTG-UM metal	Solid	1	12	10.33
70224	BTG-UWM metal	Ring	1	12	10.33
70236	F336, extra key for all BTG guards		1	1	1.41

MARS Universal Series - White Metal Cover & Base

MARS No.	Description	Base	MARS Pack	Case Qty.	Price
70238*	BTG-UWM1 hinged wht. mtl. solid cover	Ring	1	12	\$ 9.95
70243*	BTG-UM1D0H hinged wht. mtl. T-7300 Honeywell display & override opening	Solid	1	12	9.95
70247*	BTG-UM1D0WR hinged wht. mtl. IF90 White Rogers override-display opening	Solid	1	12	9.95

MARS Elite Series - Plastic Base

MARS No.	Description	Base	MARS Pack	Case Qty.	Price
70201	BTG-EK clear plastic cover	Solid	1	12	\$ 6.45

MARS Classic Series - Plastic Base

MARS No.	Description	Base	MARS Pack	Case Qty.	Price
70205	BTG-K clear plastic cover	Dual	1	12	\$ 6.95
70207*	BTG-O opaque plastic cover	Dual	1	12	8.15
70208*	BTG-KM metal cover	Solid	1	12	9.79

MARS Regal Series - Plastic Base

MARS No.	Description	Base	MARS Pack	Case Qty.	Price
70210	BTG-RK clear plastic cover	Dual	1	12	\$ 6.75
70212*	BTG-RO opaque plastic cover	Dual	1	12	6.10
70213*	BTG-RM metal cover	Solid	1	12	9.89
70226	BTG-RO, RWM, RK, RB	Ring	1	10	3.82

MARS Sentinel Series - Metal Cover And Base

MARS No.	Description	Base	MARS Pack	Case Qty.	Price
70215	BTG-54VL metal hinged	Solid	1	12	\$ 10.25
70216	BTG-54VLW metal hinged	Ring	1	12	10.25



Thermostat Guards Cross Reference

MARS NO.	BEKO	D Teck	SUPCO
70201	BTG EK	585-TG5	BTG EK
70205	BTG K clear plst	585-TG2	BTG K
70207	BTG O opaque plst		
70208	BTG KM metal		
70210	BTG RK clear plastic	585-TG1	BTG-RK
70212	BTG RO opaque plastic		
70213	BTG RM metal		
70215	BTG 54VL metal	585-TG7	BTG-54 VL
70216	BTG 54VLW hinged metal	585-TG8	BTG-54VLW
70217	BTG DK clear plastic	585-TG6	BTG-DK
70219	BTG DO opaque plastic		
70220	BTG UK2 clear plastic	585-TG	BTG-UK2
70223	BTG UM metal	585-TG3	BTG-UM
70224	BTG UWM hinged metal	585-TG4	BTG-UWM
70226	F229R plastic ring base		
70236	F336 key		
70238	BKG UWM1 hinged white metal		

* While supplies last

Freeze protection from EasyHeat!

Easy Heat and SR Trace are registered trademarks of Easy Heat Inc.

EasyHeat heating cable systems provide an economical and expedient solution to many cold weather and refrigeration related problems. These cables use relatively little power to help keep water supplies, refrigeration condensate lines and drain pans from freezing and backing up.



Residential Self Regulating Pipe Tracing Cable

- Cut to length (3 watts/ft @ 120VAC) up to 75 ft.
- Braided metal jacket for dry location application
- Connection kit provides end seal and plugs into standard 120 VAC outlet
- Automatically varies heat output with changes in surrounding temperature
- For use on plastic or metal pipes

MARS#	Description	Price
70701	100' Reel	\$ 134.14
70704	Connection Kit	10.49
70705	Pre-set Thermostat (38 degrees)	12.90



Residential Pipe Freeze Protection Cable

- For use on plastic or metal pipes
- Jacketed for wet or dry applications
- Preassembled ready to install
- Plugs into standard 120 VAC outlet
- Built-in fixed thermostat



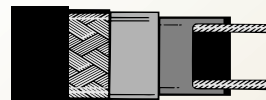
MARS#	Description	Price
70710	3' length, 21 watts	\$ 24.85
70711	6' length, 42 watts	26.89
70712	9' length, 63 watts	28.22
70713	12' length, 84 watts	30.82
70714	15' length, 105 watts	32.07
70715	18' length, 126 watts	34.03
70716	24' length, 168 watts	36.42
70717	30' length, 210 watts	39.08
70718	40' length, 280 watts	46.29

Commercial Pipe Freeze Protection Cable

- No thermostat, no plug
- 2 foot orange 14/3 cold lead
- Jacketed for wet or dry applications
- 120 VAC unless noted
- For use on metal pipes only



MARS#	Description	Price
70720	3.28' length, 23 watts	\$ 27.78
70721	6.56' length, 46 watts	29.47
70722	6.56' length, 46 watts (240V)	30.96
70723	9.84' length, 69 watts	31.86
70724	13.12' length, 92 watts	34.37
70725	13.12' length, 92 watts (240V)	33.24
70726	16.41' length, 115 watts	36.94
70727	19.69' length, 138 watts	38.55
70728	19.69' length, 138 watts (240V)	40.72
70729	22.97' length, 161 watts	41.02
70730	26.25' length, 184 watts (240V)	50.35
70731	29.53' length, 207 watts	44.34
70732	32.81' length, 230 watts (240V)	61.80



Commercial SR Trace® Self Regulating Pipe Tracing Cable

- Cut to length, up to 458' (120VAC)
- Wet (J jacket) or dry (copper braid) applications
- Automatically varies heat output with changes in surrounding temperature



MARS#	Description	Price
70742	250' reel, J jacket 5 watts/ft, (120V)	\$ 760.14
70743	250' reel, J jacket 5 watts/ft (240V)	860.14
70747	250' reel, CB jacket (120V)	565.11
70744	Heat shrink end seal kit	13.00
70745	Heat shrink power/end connection kit	18.66
70746	Heat shrink splice and "T" connection kit	22.80

Heating Products

MHS 2012

MARS2 Adjustable Fan & Limit Switches

4⁷⁵ each

- Easy dial adjustment, integral oval flange
- .25" Quick connect terminals



MARS2 No.	Type	Range °F	Diff. °F	Switching Action
35205	Fan	90-130	20	close on rise
35220	Limit	135-175	40	open on rise
35225	Limit	175-215	40	open on rise
35230	Limit	210-250	40	open on rise
35235	Limit	250-290	40	open on rise

Cross Reference Information

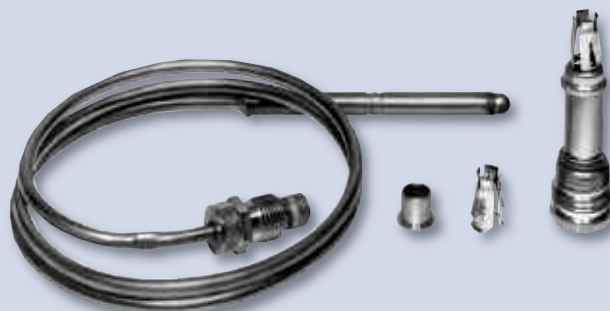
MARS2	MARS	White-Rodgers
35205	39205	3F05-1
35220	39220	3L05-1
35225	39225	3L05-2
35230	39230	3L05-3
35235	39235	-

Upon depletion of MARS2 inventory, new orders will be MARS part numbers.

MARS2 Thermocouples

- High temperature stainless steel element for long life and dependable operation.
- Includes adapter fittings for replacing any thermocouple in the field.
- Individually display packaged.

MARS2 No.	Length	Price
72218	18"	\$ 2.02
72224	24"	2.25
72230	30"	2.35
72236	36"	2.53
72248	48"	2.92

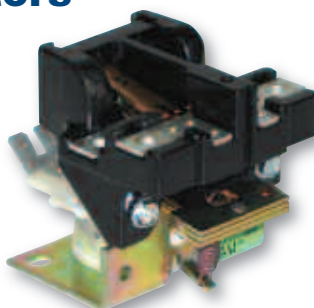


Upon depletion of MARS2 inventory, new orders will be MARS part numbers.

30 Amp Two Pole Contactors

The MARS Series 180 contactors are designed primarily to replace contactors used in air conditioning and electric heating to control blower motors. In addition they are used to switch pumps and computer power supplies. Replace General Electric Contactors and other manufacturers including WR, Essex/RBM and Honeywell.

18001



10⁷⁵ each

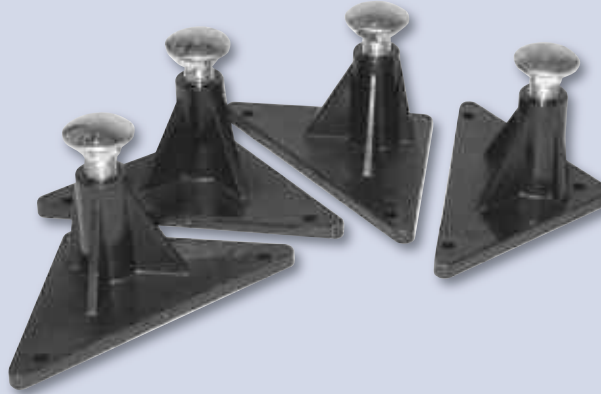
Cross Reference

GEMLINE	HONEYWELL NO.	MARS REPLACEMENT
MC11	R850B1146	18001

MARS NO.	DESCRIPTION	FULL LOAD AMPS	RESISTIVE AMPS	LOCKED ROTOR AMPS	COIL VOLTAGE	POLES	COIL VOLT	PICK-UP HOT	MAX COLD
18001	30 Amp 2 Pole Magnetic Line Contactor	30	30	120	24	2	24	20.5	19.2

MARS Easy Leveler™ Adjustable Furnace Legs

- Includes 4 easy leveler legs & sheet metal screws
- Designed to level a furnace & air conditioning coil for proper drainage.
- Proper leveling helps eliminate standing water, thus reducing bacteria
- Easily adjustable even after installation
- Legs can support up to 400 lbs.
- Adjustable from 2-3/4" to 4" in height



79095 **12⁴⁵**

MARS Economy Furnace Mounting Blocks

- Holds furnace 2" off the floor
- Absorbs vibration, reduces noise
- Composite construction
- Peel & stick installation



MARS No.	Description	MARS Pack	Price
79085	Economy Furnace Mounting Blocks	12	\$.99

MARS Heat Pump Risers

Heavy duty composite heat pump risers are available in 2 popular heights in a cost effective 1 piece design as well as a 2 piece terrain adaptable design.

Each riser includes factory installed built mastic patches on the top and bottom to absorb vibration and reduce noise.

MARS No.	Description	MARS Pack	Price
93600	3" 1 Piece Heat Pump Riser	48	\$.85
93601	6" 1 Piece Heat Pump Riser	24	.99
93602	3" 2 Piece Heat Pump Riser	32	1.44
93603	6" 2 Piece Heat Pump Riser	16	1.69
93604	4" Riser Extension	16	.89



The Real Deal!

Don't Risk Customer Complaints and Callbacks Resulting From Inferior Capacitors!



MARS RUN CAPACITORS MEET OR EXCEED THE FOLLOWING SPECIFICATIONS:

- Meet the EIA 456 standard. This life test is 125% of rated voltage at 80°C for 2,000 hours. This life test equates to 60,000 hours at rated voltage and rated temperature.
- Meet the Tecumseh H115 standard, tested at 135% of rated voltage at 10°C above rated temperature for 500 hours.
- VDE approved. VDE is tested according to the British Standard, which permits MARS to mark capacitors with CE approval.
- Tested and approved by every major U.S. motor company and compressor company.
- CSA approved and UL recognized.
- **MARS** is proud to offer the complete line of run capacitors by



See pages 16 and 17 for selection guide

For **“The Real Deal”**

ASK FOR MARS RUN CAPACITORS IN THE BLUE BOX

MARS Blue Box Run Capacitors

SINGLE SECTION

370 Volt Oval		440 Volt Oval		370 Volt Round		440 Volt Round	
MARS No.	Microfarad	MARS No.	Microfarad	MARS No.	Microfarad	MARS No.	Microfarad
12002	2	12026	2	12092	2	12102	2
12003	3	12019	2.5	12093	3	12103	3
12004	4	12027	3	12094	4	12104	4
12005	5	12028	4	12095	5	12105	5
12006	6	12029	5	12096	6	12106	6
12007	7.5	12030	6	12097	7.5	12107	7.5
12008	10	12031	7.5	12098	10	12232	10
12009	12.5	12032	10	12099	12.5	12233	12.5
12010	15	12033	12.5	12210	15	12234	15
12012	17.5	12034	15	12211	16	12236	17.5
12014	20	12036	17.5	12212	17.5	12237	20
12015	25	12037	20	12214	20	12240	25
12017	30	12040	25	12215	25	12241	30
12018	35	12041	30	12217	30	12243	35
12021	40	12043	35	12218	35	12245	40
12023	45	12045	40	12221	40	12248	45
12025	50	12048	45	12223	45	12251	50
12024	55	12049	50	12225	50	12252	55
12087	60	12050	55	12226	55	12254	60
12011	65	12051	60	12227	60	12258	70
12089	70	12052	65	12128	65	12259	80
12090	80	12130	70	12229	70	12068	90
		12135	75	12199	80		
		12140	80	12116	100		

DUAL SECTION

370 Volt Oval		440 Volt Oval		370 Volt Round		440 Volt Round	
MARS No.	Microfarad	MARS No.	Microfarad	MARS No.	Microfarad	MARS No.	Microfarad
12141	15/3	12165	10/5	12121	15/3	12111	10/5
12056	15/4	12270	15/4	12122	15/4	12118	15/5
12057	15/5	12271	15/5	12203	15/5	12356	15/10
12058	15/10	12177	15/10	12204	15/10	12350	17.5/5
12059	17.5/4	12180	20/5	12205	17.5/4	12115	20/5
12060	17.5/5	12182	20/15	12206	17.5/5	12354	20/7.5
12061	20/3	12184	25/5	12207	20/4	12351	20/10
12062	20/4	12182	25/7.5	12260	20/5	12112	20/15
12063	20/5	12183	25/10	12016	20/7.5	12353	25/3
12064	20/10	12186	25/15	12208	20/10	12355	25/4
12164	20/15	12181	30/4	12209	20/15	12278	25/5
12142	25/3	12187	30/5	12242	25/3	12279	25/7.5
12065	25/4	12038	30/7.5	12175	25/4	12113	25/10
12066	25/5	12035	30/10	12261	25/5	12114	25/15
12143	25/7.5	12085	35/3	12262	25/7.5	12126	30/3
12131	25/8	12179	35/4	12213	25/10	12120	30/4
12167	25/10	12185	35/5	12244	30/3	12281	30/5
12133	25/15	12188	35/7.5	12263	30/4	12282	30/7.5
12144	30/3	12176	35/8.5	12264	30/5	12352	30/10
12145	30/4	12272	35/10	12224	30/7.5	12077	35/3
12069	30/5	12080	40/3	12228	30/10	12070	35/4
12146	30/7.5	12086	40/5	12039	30/15	12283	35/5
12147	30/10	12189	40/7.5	12082	35/3	12119	35/6
12148	35/3	12273	40/10	12231	35/4	12284	35/7.5
12071	35/4	12190	45/5	12266	35/5	12091	35/10
12072	35/5	12274	45/7.5	12235	35/7.5	12078	40/3
12149	35/7.5	12108	50/5	12238	35/10	12285	40/4
12150	35/10	12013	50/7.5	12074	40/3	12286	40/5
12151	40/3	12275	55/5	12267	40/4	12220	40/6
12158	40/4	12276	55/10	12178	40/5	12287	40/7.5
12171	40/5	12109	60/5	12268	40/7.5	12088	40/10
12152	40/7.5	12110	60/7.5	12246	40/10	12079	45/3
12134	40/10	12101	65/10	12073	45/3	12219	45/4
12173	45/3	12297	80/5	12247	45/4	12288	45/5
12174	45/5	12298	80/7.5	12269	45/5	12127	45/6
12153	45/7.5			12249	45/7.5	12289	45/7.5
12136	45/10			12250	45/10	12172	45/10
12137	45/15			12075	50/3	12290	50/5
12138	50/5			12191	50/5	12291	50/7.5
12154	55/5			12192	50/7.5	12124	50/10
12155	55/7.5			12239	50/10	12253	50/12.5
12139	60/5			12193	55/5	12292	55/5
12156	60/7.5			12194	55/7.5	12293	55/7.5
12157	60/10			12067	55/10	12299	55/10
12159	65/5			12076	60/3	12160	60/3
12163	80/5			12195	60/5	12294	60/5
12123	80/7.5			12196	60/7.5	12295	60/7.5
				12265	60/10	12296	60/10
				12042	65/5	12161	60/12.5
				12053	70/5	12162	65/10
				12054	70/7.5	12255	70/5
				12055	70/10	12166	70/7.5
				12044	75/5	12169	70/10
				12046	75/7.5	12168	75/5
				12084	75/10	12125	75/7.5
				12197	80/5	12047	75/10
				12198	80/7.5	12257	80/5
				12201	80/10	12216	80/7.5
				12202	80/12.5	12117	80/10
				12129	85/5	12022	85/5
				12230	85/7.5	12020	85/7.5
				12222	85/10	12001	85/10

See Your MARS Representative For Pricing



Components

MHS 2012

Start Capacitors

MARS Blue Box



SINGLE SECTION

165 Volts AC	
MARS No.	Microfarad
11075	72-88
11076	88-108
11077	108-130
11031	124-149
11032	145-175
11033	161-193
11034	189-227
11078	216-259
11035	233-292
11036	270-324
11079	340-408
11080	378-455
11037	400-480
11081	540-648
11082	710-850
11083	810-972

330 Volts AC	
MARS No.	Microfarad
11055	21-25
11056	25-30
11057	30-36
11058	36-43
11059	43-56
11060	56-72
11160	64-77
11061	72-88
11062	88-108
11063	108-130
11064	130-156
11165	124-156
11092	135-162
11066	145-175
11067	161-193
11068	189-227
11069	216-259
11070	270-324
11093	300-360

DUAL SECTION

110/125 Dual Voltage AC	
MARS No.	Microfarad
11002	21-25
11003	25-30
11004	30-36
11005	36-43
11006	43-56
11007	56-72
11008	72-88
11009	88-108
11010	108-130
11112	124-156
11011	130-156
11013	145-175
11014	161-193
11015	189-227
11016	200-240
11017	216-259
11018	233-292
11019	270-324
11020	300-360
11021	324-388
11022	340-408
11023	378-440
11024	400-480
11071	430-516
11025	460-552
11026	540-648
11027	590-708
11047	645-774
11028	708-850
11072	815-970
11029	829-995
11073	850-1020
11030	1000-1200
11074	1290-1548

220/250 Dual Voltage AC	
MARS No.	Microfarad
11038	21-25
11039	25-30
11040	30-36
11041	36-43
11042	43-56
11043	56-72
11084	59-71
11137	64-77
11044	72-88
11045	88-108
11046	108-130
11148	124-156
11049	145-175
11050	161-193
11051	189-227
11052	216-259
11053	233-292
11054	270-324
11085	280-336
11086	320-384
11087	340-408
11088	378-455
11089	400-480
11090	430-516
11091	630-750



The Turbo™ 200 Family of Products

Have The Right Capacitor For The Job...
Every Time.
Perfect Solution For Off Hour Emergency
Service Calls.



Scan with Smartphone to view video



86150 TurboMeter™



11100 Turbolytic™ JR

12100 Turbo™ 200 Mini

12200 Turbo™ 200

TURBO™ 200

Universal Run & Start Capacitor Replacement

One model covers a range of single and dual mfd ratings.

MARS No.	Description	Microfarad	Price
12100	TURBO™ 200 mini	2.5 mfd - 12.5 mfd, 370 or 440v	\$ 5.41
12200	TURBO™ 200	2.5 mfd - 67.5 mfd, 370v or 440v	35.99
12300	TURBO™ 200 X	5.0 mfd -97.5 mfd, 370 or 440v	47.13
11200	Turbolytic™ 50 Universal Motor Start Capacitor	23 mfd -302 mfd, 125 to 330v	46.09
11100	Turbolytic™ JR	23 mfd -208 mfd, 125 to 330v	34.08
86150	TurboMeter™		42.80

See the dual values develop simultaneously on the screen as you create the ratings needed.

Arrived! USA Capacitors

marsdelivers.com

SINGLE SECTION

MARS NO.	DESCRIPTION
14005	5 MFD 370V OVL
14029	5 MFD 440/370V OVL
14105	5 MFD 440/370V RND
14007	7.5 MFD 370V OVL
14031	7.5 MFD 440/370V OVL
14107	7.5 MFD 440/370V RND
14008	10 MFD 370V OVL
14032	10 MFD 440/370V OVL
14232	10 MFD 440/370V RND
14009	12.5 MFD 370V OVL
14033	12.5 MFD 440/370V OVL
14010	15 MFD 370V OVL
14034	15 MFD 440/370V OVL
14234	15 MFD 440/370V RND
14237	20 MFD 440/370V RND
14240	25 MFD 440/370V RND
14241	30 MFD 440/370V RND
14243	35 MFD 440/370V RND
14245	40 MFD 440/370V RND
14248	45 MFD 440/370V RND
14251	50 MFD 440/370V RND
14252	55 MFD 440/370V RND
14256	65 MFD 440/370V RND
14254	60 MFD 440/370V RND
14258	70 MFD 440/370V RND
14259	80 MFD 440/370V RND

DUAL SECTION

MARS NO.	DESCRIPTION
14353	25/3 MFD 440/370V RND
14278	25/5 MFD 440/370V RND
14126	30/3 MFD 440/370V RND
14281	30/5 MFD 440/370V RND
14282	30/7.5MFD 440/370V RND
14077	35/3 MFD 440/370V RND
14283	35/5 MFD 440/370V RND
14284	35/7.5MFD 440/370V RND
14091	35/10 MFD 440V RND
14078	40/3 MFD 440/370V RND
14286	40/5 MFD 440/370V RND
14287	40/7.5MFD 440/370V RND
14088	40/10 MFD 440/370V RND
14288	45/5 MFD 440/370V RND
14289	45/7.5MFD 440/370V RND
14172	45/10 MFD 440/370V RND
14290	50/5 MFD 440/370V RND
14291	50/7.5MFD 440/370V RND
14299	55/10 MFD 440/370V RND
14292	55/5 MFD 440/370V RND
14293	55/7.5MFD 440/370V RND
14294	60/5 MFD 440/370V RND
14295	60/7.5MFD 440/370V RND
14296	60/10 MFD 440/370V RND
14162	65/10 MFD 440/370V RND
14255	70/5 MFD 440/370V RND
14166	70/7.5MFD 440/370V RND
14169	70/10 MFD 440/370V RND
14257	80/5 MFD 440/370V RND
14216	80/7.5MFD 440/370V RND
14117	80/10 MFD 440/370V RND

See Your MARS Representative For Pricing

5
Year
Warranty!



REPLACING A LEGEND

MARS, the longtime distributor of Siemens/Furnas DP contactors, has **Engineered and Tooled** a Direct “Drop in” Replacement.

The **MARS** 780 Series



Features:

- Accepts Furnas (Siemens) auxiliary contacts (3 pole 25 – 60 amp)
- Dimensions – same as Furnas
- Performance – ARI 780*
- Part #'s – same MARS #'s as formerly used for Furnas
- X Reference – “Replaces Furnas xxxxx” on every box label

Enhancements:

- Push to test button on 2 pole models
- 20% larger contacts (1 & 2 pole)
- Quick Connect & Screw Terminals on coil
- Brass or Copper terminals (no steel)
- Improved corrugate packaging

“The MARS 780 Series ranges from 1.5 pole, 30 amp through 3 pole, 90 amp models. Auxiliary switches and replacement coils available.

Others will offer cross references to Furnas. Only MARS offers a true “Drop In” replacement.

*780 is the ARI specification number that defines the highest level of DP contactor performance in terms of electrical and mechanical life.



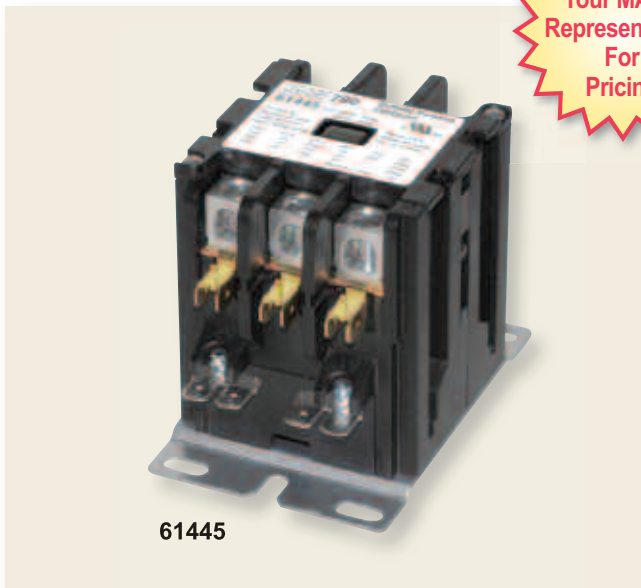
MARS 780 - 3 Pole Contactors

MARS 780 - 3 pole contactors are designed for demanding applications. The enclosed body design provides quiet operation and improved durability by reducing the intrusion of dust and dirt. Side attachment rails for auxiliary switches (30-60 amp contactors) allow attachment of MARS 780 or Furnas auxiliary switches. Silver-cadmium oxide contacts provide increased contact life when switching inductive loads.

Features:

- Large arch window box lugs
- Enclosed body design
- Compatible with MARS 780 and Furnas auxiliary switches
- Silver-cadmium oxide contacts
- Removable contact cover and baseplate
- Standard MARS 780 replacement coils
- Dual QC and screws on coil terminals
- Class F coil insulation
- Standard DP foot print

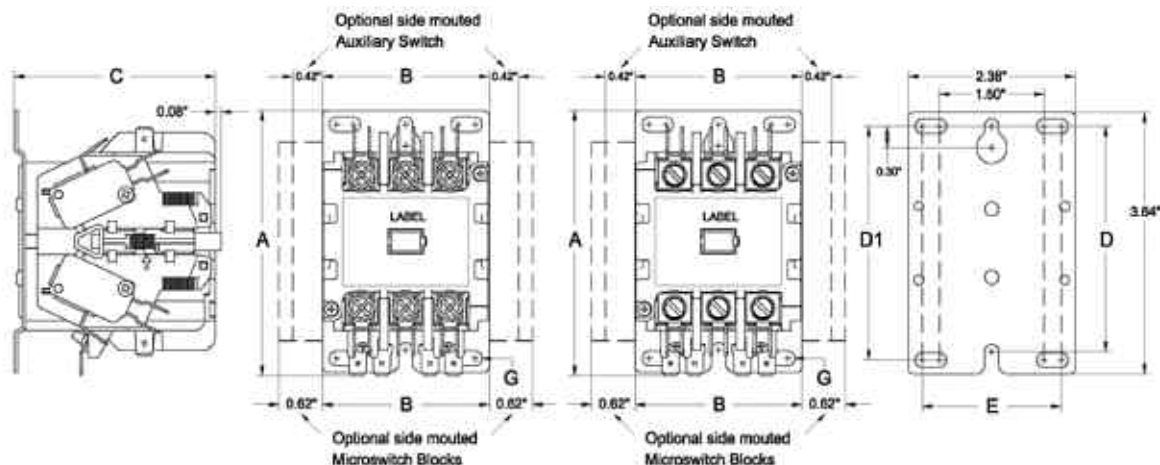
See Your MARS Representative For Pricing



61445



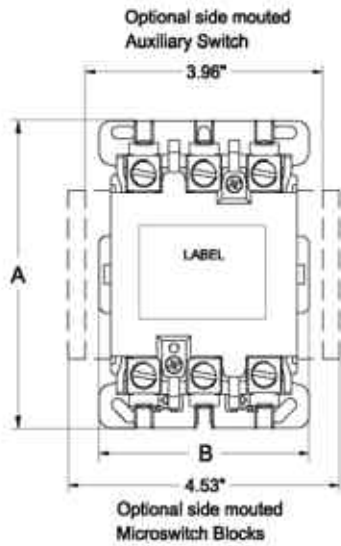
30-40A 2* Pole & 3 Pole



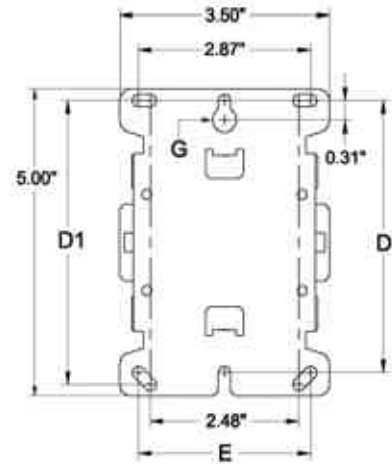
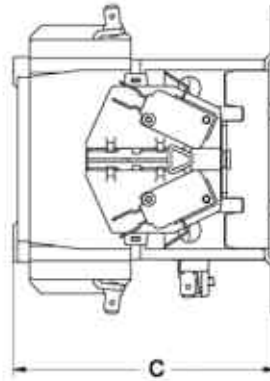
Note - 2* Pole is a 3 pole body with center contacts removed.

Components

MHS 2012



75-90A 3 Pole



3 Pole 30 - 90 Amp

* For 25 Amp Contactors - Use 30 Amp in Place of 25 Amp

MARS No.	Furnas No.	FLA	Locked Rotor Amps			Non Inductive	Coil Volts	Horsepower				Termination
			240V	480V	600V			1 PH 240V	3 PH (240V, 480V, 600V)			
61430*	42BF35AJ	30	180	150	120	40	24	3 HP	7.5 HP	10 HP	15 HP	Screw Type
61431*	42BF35AF						120					
61432*	42BF35AG						208-240					
61433*	42BF35AL						277					
61434*	42BF35AH						480					
61750	-	30	180	150	120	40	24	3 HP	7.5 HP	10 HP	15 HP	Box Lug
61751	-						120					
61752	-						208-240					
61753	-						277					
61754	-						480					
61445	42CF35AJ	40	240	200	160	50	24	5 HP	10 HP	15 HP	20 HP	Box Lug
61446	42CF35AF						120					
61447	42CF35AG						208-240					
61448	42CF35AL						277					
61449	42CF35AH						480					
61460	42DF35AJ	50	300	250	200	63	24	5 HP	15 HP	20 HP	25 HP	Box Lug
61461	42DF35AF						120					
61462	42DF35AG						208-240					
61463	42DF35AL						277					
61464	42DF35AH						480					
61470	42EF35AJ	60	360	300	240	75	24	7.5 HP	20 HP	25 HP	30 HP	Box Lug
61471	42EF35AF						120					
61472	42EF35AG						208-240					
61473	42EF35AL						277					
61474	42EF35AH						480					
61480	42FE35AJ106	75	450	375	300	94	24	15 HP	25 HP	40 HP	40 HP	Box Lug
61481	42FE35AF106						120					
61482	42FE35AG106						208-240					
61483	42FE35AL106						277					
61484	42FE35AH106						480					
61490	42GE35AJ106	90	540	450	360	120	24	15 HP	30 HP	50 HP	50 HP	Box Lug
61491	42GE35AF106						120					
61492	42GE35AG106						208-240					
61493	42GE35AL106						277					
61494	42GE35AH106						480					

MARS®

More Powerful Pump

24' Lift

SAVE AT THE PUMP SPECIAL

Contractors can earn gas gift cards with the purchase of MARS condensate pumps thru 2012.

See your MARS rep for details.



Condensate Pump Comparison Chart

Gallons Per Hour Pump Performance Comparison Chart

Foot Lift	1	5	10	15	20	24
MARS	125	98	74	70	43	7
Comp. 1	84	75	60	42	10	0
Comp. 2	117	98	70	58	11	0
Comp. 3	105	95	73	36	0	0

Feature	MARS	Comp. 1	Comp. 2	Comp. 3
24 ft. Lift	●			
Motor Corrosion Protection	●			
Drip Proof Motor Housing	●	●		●
Drip Proof Motor & Switches	●			
Vibration Absorbing Rubber Feet	●	●	●	
Side Mount	●	●	●	●
Quick Release Check Valve	●	●		
Internal Safety Switch	●		●	
Solid Float	●	●		●

Features:

- ❑ **ABS Plastic Housing** – One of the most durable plastics available.
- ❑ **Stainless Steel Components** – Resists rust and corrosion.
- ❑ **1/25 HP Motor – Ball Bearing Construction** – Quiet operation with a motor life 10X existing pumps – Thermally protected motor
- ❑ **Standard – Overflow Safety Switch** – Reduces potential water damage – Easily reconfigured from NC to NO contacts
- ❑ **Integrated- Side Mount Brackets** – No hardware or brackets to lose
- ❑ **Check Valve - Quick Release – Positive Lock** – Tool-less – quick clean check valve – No need to remove condensate drain line when cleaning. – Silicone Duck Bill design for long life. Resists clogging
- ❑ **Drip Proof Housing** – Eliminates water and debris from entering the motor housing
- ❑ **Solid Float Construction with Stand-Off** – Eliminates float deterioration and malfunction
- ❑ **Reversible Motor Housing** – Speeds installation and eliminates the need to change plumbing configuration

MARS No.	Description	Price
21780	115 V, 60 Hz, 0.91 Amps, 71 Watts 6' Cord, 3/8" Check Valve, Safety Switch Medium Reservoir	\$ 25.63
21781	115 V, 60 Hz, 0.91 Amps, 71 Watts 6' Cord, 3/8" Check Valve, Safety Switch 20' Tubing, Medium Reservoir	28.09
21782	230 V, 60 Hz, 0.6 Amps, 75 Watts 6' Cord, 3/8" Check Valve, Safety Switch Medium Reservoir	30.50
21783	230 V, 60 Hz, 0.6 Amps, 75 Watts 6' Cord, 3/8" Check Valve, Safety Switch 20' Tubing, Medium Reservoir	31.97



Components

MHS 2012



Contractor Special

Minimum purchase
5 pumps
Submit UPC codes to MARS
Receive \$25 in
FREE GAS cards
Each additional pump
valued at
\$5 in **FREE GAS**
Offer expires 12/31/12

Low Profile 22' Pump

- Low Profile Pump
- Compact Design
- Integrated Safety Switch
- Quick Service Check Valve
- Drip Proof Housing
- Class Leading Performance



MARS No.	Description	Price
21784	115 V, 60 Hz, Low Profile 22' Lift, 3/8 Check Valve, Safety Switch	\$ 31.57
21785	230 V, 60 Hz, Low Profile 22' Lift, 3/8 Check Valve, Safety Switch	33.71

16' Lift Pump

- 16' Lift Pump
- Whisper Quiet
- 1/2 Gal Reservoir
- Rubber Isolation Feet
- Quick Service Check Valve
- Class Leading Performance



MARS No.	Description	Price
21786	115 V, 60 Hz, 16' Lift 3/8 Check Valve, Safety Switch, Medium Reservoir	\$ 23.49

Check Valve Replacement

MARS No.	Description	Price
21787	Check Valve Replacement	\$ 4.27

See us on
You TubeTM
Search MARS
Condensate
Pump



Scan with Smartphone
to view video

MARS Complete Line of Pressure Switches

The MARS 333XX is being superseded by MARS 43XXX series.

KLIXON Pressure Switches

- Appropriate for a wide variety of HVAC/R, commercial, and industrial applications
- Models designed for use in R410A applications.



Low Pressure Cut-Out-Open On Pressure Drop

FORMER MARS NO.	4 SERIES MARS NO.	CUT OUT	CUT IN	NOTES
33329	43341	5	20	1/4" Female Flare S.A.E. Mounting
	43342	5	30	1/4" Female Flare S.A.E. Mounting
33330	43343	10	25	1/4" Female Flare S.A.E. Mounting
33333	43344	15	35	1/4" Female Flare S.A.E. Mounting
	43371	15	40	1/4" Copper Clad SS Tube, 90 degree elbow w/36" leads
	43345	20	45	1/4" Female Flare S.A.E. Mounting
	43372	22	50	1/4" Copper Clad SS Tube w/38" leads
	43373	25	40	Gold Contacts 1/4" Female Flare w/36" leads
33362	43346	25	50	1/4" Female Flare S.A.E. Mounting
33336	43347	25	65	1/4" Female Flare S.A.E. Mounting
33363	43348	25	80	1/4" Female Flare S.A.E. Mounting
	43349	35	60	1/4" Female Flare S.A.E. Mounting
	43350	40	80	1/4" Female Flare S.A.E. Mounting
33364	43351	45	60	1/4" Female Flare S.A.E. Mounting
	43352	50	90	1/4" Female Flare S.A.E. Mounting
33339	43374	50	95	1/4" Copper Clad SS Tube w/36" leads
	43353	75	100	1/4" Female Flare S.A.E. Mounting
33342	43375	90	120	1/4" Female Flare, w/18" leads
	43354	150	225	1/4" Female Flare S.A.E. Mounting
	43355	170	250	1/4" Female Flare S.A.E. Mounting



Fan Cycling - Close on Pressure Rise

FORMER MARS NO.	4 SERIES MARS NO.	CUT OUT	CUT IN	NOTES
33340	43301	75	100	1/4" Female Flare S.A.E. Mounting
	43302	110	170	1/4" Female Flare S.A.E. Mounting
33341	43303	125	265	1/4" Female Flare S.A.E. Mounting
	43304	150	225	1/4" Female Flare S.A.E. Mounting
	43305	190	275	1/4" Female Flare S.A.E. Mounting
	43370	180	240	New! 1/4" Female Flare
33341	43306	210	275	1/4" Female Flare S.A.E. Mounting
	43307	300	400	1/4" Female Flare S.A.E. Mounting



Components

MHS 2012

Klixon® Pressure Switches

Klixon Brand, UL and CUL, Compact size, light weight for direct mounting, Factory Set, Hermetically Sealed Sensor, 5.8 FLA - 34.8 LRA @ 120 VAC, 2.9 FLA - 15.0 LRA @ 240 VAC, 100,000 Cycle Life at Rated Current



High Pressure Cut-Out - Open on Pressure Rise

FORMER MARS NO.	4 SERIES MARS NO.	CUT OUT	CUT IN	NOTES	PRICE
33353	43337	200	150	1/4" Female Flare S.A.E. Mounting	\$ 8.75
	43321	225	150	1/4" Female Flare S.A.E. Mounting	8.75
33354	43322	250	150	1/4" Female Flare S.A.E. Mounting	8.75
33310	43324	275	195	1/4" Female Flare S.A.E. Mounting	8.75
33355	43325	300	200	1/4" Female Flare S.A.E. Mounting	8.75
33313	43326	325	225	1/4" Female Flare S.A.E. Mounting	8.75
33316	43320	350	245	1/4" Female Flare S.A.E. Mounting	8.75
33356	43327	350	250	1/4" Female Flare S.A.E. Mounting	8.75
33319	43328	375	275	1/4" Female Flare S.A.E. Mounting	8.75
33357	43329	400	200	1/4" Female Flare S.A.E. Mounting	8.75
33322	43330	400	280	1/4" Female Flare S.A.E. Mounting	8.75
33370	43340	400	300	1/4" Female Flare S.A.E. Mounting w/24" leads (1 stripped, 1 w/1/4" female flag QC)	10.19
33358	43331	400	300	1/4" Female Flare S.A.E. Mounting	8.75
33365 ¹	43313 ¹	410	290	1/4" Female Flare S.A.E. Mounting	11.29
33325	43332	425	300	1/4" Female Flare S.A.E. Mounting	8.75
	43333	425	325	1/4" Female Flare S.A.E. Mounting	8.75
33359	43334	450	250	1/4" Female Flare S.A.E. Mounting	8.75
	43365	590	418	1/4" Female Flare w/snubber	8.75
33361	43335	600	475	1/4" Female Flare S.A.E. Mounting	8.75
	43366	610	420	1/4" Copper Clad SS Tube, 90 degree elbow w/snubber	8.75
	43376	610	420	1/4" Copper Clad SS Tube w/snubber	8.75
33369	43339	630	480	1/4" Female Flare S.A.E. Mounting	8.75
	43367	650	450	1/4" Copper Clad SS Tube w/snubber	8.75

What is a "snubber"? The higher pressures of R410a applications tend to produce temporary spikes. A snubber is a Klixon device that works to dampen out extreme pressure spikes that would otherwise lead to unwanted nuisance tripping.



¹ Manual reset

High Pressure - Manual Reset - Open on Pressure Rise

FORMER MARS NO.	4 SERIES MARS NO.	CUT OUT	CUT IN	NOTES	PRICE
	43312	375	Manual	1/4" Female Flare S.A.E. Mounting	\$ 8.75
	43313	410	Manual	1/4" Female Flare S.A.E. Mounting	8.75
33350	43314	415	Manual	Capillary Tube	11.29
33352	43315	440	Manual	Capillary Tube	14.79
	43316	475	Manual	1/4" Female Flare S.A.E. Mounting	8.75
	43368	590	Manual	1/4" Female Flare w/snubber	12.99
	43369	610	Manual	1/4" Female Flare w/snubber	12.99

Direct Replacement Crankcase Heaters for Copeland

K&H Series Crankcase Heaters

MARS NO.	COPELAND NO.	WATTS	VOLTS	FIGURE	COMPRESSOR MODEL	PRICE
32443	9980118-06(018-0028-02)	50	240	1	K & H	\$ 24.19

BR Series Crankcase Heaters

MARS NO.	COPELAND NO.	WATTS	VOLTS	FIGURE	COMPRESSOR MODEL	PRICE
32445	018-0022-01	60	120	3.00	2	\$ 24.70

Universal Replacement Crankcase Heaters for Copeland

MARS NO.	COPELAND NO.	WATTS	VOLTS	HEATER LENGTH IN.	CAN REPLACE	ACCESSORIES	PRICE
32490	018-0034-00	65	120	10.00	4R,6R,6T,9R,9T,9W,E,MW 3A,3R,LA,MR,NR,EA,ER,LW,MD	2 Bolts	\$ 38.82
32491	018-0034-01	65	240	10.00	4R,6R,6T,9R,9T,9W,E,MW 3A,3R,LA,MR,NR,EA,ER,LW,MD	2 Bolts	36.65
32492	018-0034-02	65	480	10.00	E,9R,9W,MW,3A,3R,LA,MR, NR,EA,ER,LW,MD	2 Bolts	38.82

Direct Replacement Crankcase Heaters for Copeland

Crankcase Heaters for Copeland

NOTE: All heaters requiring clips or brackets are packaged with the appropriate clips or brackets required.

MARS NO.	COPELAND NO.	WATTS	VOLTS	HEATER LENGTH IN.	FIGURE	COMPRESSOR MODEL	ACCESSORIES	PRICE
32401	518-0001-01						2 Bolts	\$23.28
32403	518-0001-02	65	240	4.13	1	3D,9D,9R		23.28
32405	518-0001-03						2 Bolts	23.28
32408	518-0002-01							29.55
32409	518-0002-02	100	240	4.25	2	4R,6R,6T,4D,6D		26.95
32410	518-0002-03							26.95
32416	518-0009-01	65	240	10.00	6	E,9R,9W,MW,3A,3R,LA,MR,NR		33.29
32431	018-0021-04		120					20.22
32432	018-0021-05	200	240	3.50	4	6RJ,4RJ,4RR		20.22
32437	018-0023-01		240					32.54
32439	018-0023-00	50	120	5.00	5	K & H		32.54

Components

MHS 2012

Direct Replacement Crankcase Heaters for Carrier

Crankcase Heaters for Carrier

MARS NO.	CARRIER NO.	WATTS	VOLTS	HEATER LENGTH IN.	LEAD LENGTH IN.	FIGURE	COMPRESSOR MODEL	PRICE
32452	HT36DL172	125	120	2.75	25	2		\$ 19.55
32456	HT36ES363	75	120	2.75	36.5	1	AB:AC:AD:38AA	20.29
32458	HT36FS364	75	120	2.75	52	2	AB:AC:AD:38AA	21.11
32460	HT36NS377	75	120	2.75	88	2	EB:30EA:30HH:30HJ:48DD:50DD	24.33
32462	HT36NS477	75	230	2.75	88	2	6D:06D	24.33
32464	HT36FS474	75	240	2.75	52	2	EM:6D:06D	21.11
32466	HT36XS575	75	240	2.75	36	1		20.07
32468	HT36FL463	125	240	2.75	49	2		20.44
32472	HT36FL379	125	120	2.75	60	2	EM:06DM:306B:50EQ	21.72
32474	HT36FL479	125	240	2.75	68	2	EM:06DM:30HR:30HS	21.72

One-On-One™ Crankcase Heaters

MARS NO.	OEM	OEM NO.	WATTS	VOLTS	LENGTH	DIA.	FIGURE	PRICE
32475	Trane	661A-16093-12-4-C*	100	115/230	6 1/2"	3/4"	4	\$ 34.62
32476	Trane	661A-13881-12-4-C*	75	115/230	6 1/2"	3/4"	3	34.62
32478	Trane	X13140729-01	140	115/230	11"	3/4"	4	40.59

PTCR Crankcase Heaters

MARS solid state crankcase heater is a PTCR self regulating device which performs in a similar manner to a heater and thermostat combination. Unlike conventional resistance heater and thermostat combinations which provide only fully on or fully off operation, MARS solid state crankcase heater emits heat in proportion to the compressor requirements.

As compressor temperature decreases, current flow through the heater increases causing it to heat up. When the compressor is warm and additional heat is not required, current flow decreases. Only enough electricity is consumed to maintain the correct temperature. MARS solid state crankcase heaters are self adjusting to voltage variations.

Application:

MARS 32342 is for use on heaterless compressors to help correct refrigerant migration or as a preventative maintenance precaution. It will replace belly-band heaters on compressors up to 5 HP, 120 and 240 VAC. MARS 32342 attaches to the compressor using high temperature, pressure sensitive aluminum foil. If more heat is required, a second 32342 may be wired in parallel and applied to the opposite side of the compressor.

Features:

- Total solid state reliability
- Self regulating
- 32342—fast, easy installation
- UL E49372, SA5202
- CSA LR46861, LR80111

MARS NO.	TYPE	WATTS	VOLTS	PRICE
32342	Heater with self-stick foil	28	600 Max	\$ 43.49

Universal Crankcase Heater

MARS 32340 universal crankcase heater is for use on air conditioning and heat pump compressors located in cool ambient temperatures, to prevent refrigerant migration. MARS 32340 is a soft aluminum sheath which is formed around the base of the compressor and attached with the supplied mounting spring. This unique design will fit most hermetic compressors used in residential systems.

Features:

- Universal application
- Simple installation
- UL and CSA listed

MARS NO.	TYPE	WATTS	VOLTS	PRICE
32340*	Universal wrap-around	50	230	\$ 8.19

* While supplies last

New “JARD by MARS” brand

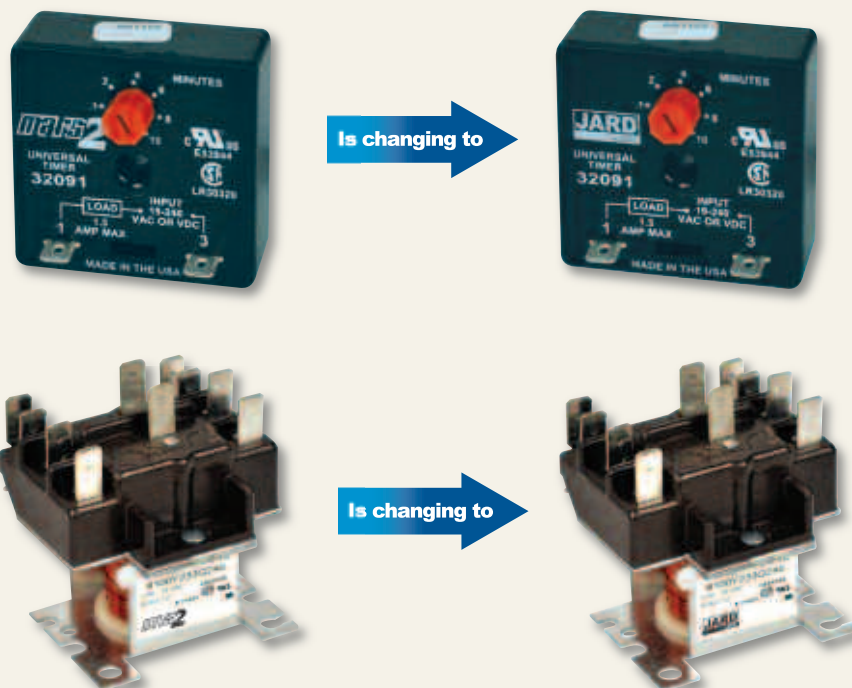


The MARS2 brand is changing to JARD by MARS. Beginning this Fall, you will see MARS2 as a running change with no change in part numbers or pricing.

Look for “JARD by MARS” as your brand for high volume, price sensitive products:

- Capacitors (run and start)
- Contactors
- Switching Relays
- Transformers
- Pressure Switches
- Watt Motors
- Time Delay Relays

Two examples:



Components

MHS 2012



Definite Purpose Contactors

MARS2 Definite Purpose Contactors are designed for use on refrigeration, air conditioning, and electric heating systems. The universal mounting base allows replacement of most contactor brands. Power connections can be made with lugs & quick connects.

- Lug terminals with quick connects
- UL
- CUL

MARS2 W/LUGS	PRICE	LOAD AMPS	FULL RESISTIVE AMPS	COIL VOLTAGE	POLES
17215	\$ 3.68	25	40	24	1-1/2
17216	3.68	25	40	120	1-1/2
17217	3.68	25	40	240	1-1/2
17225	4.05	25	40	24	2
17226	4.05	25	40	120	2
17227	4.05	25	40	240	2
17315	3.79	30	40	24	1-1/2
17316	3.79	30	40	120	1-1/2
17317	3.79	30	40	240	1-1/2
17325	4.16	30	40	24	2
17326	4.16	30	40	120	2
17327	4.16	30	40	240	2
17335	8.84	30	40	24	3
17336	8.84	30	40	120	3
17337	8.84	30	40	240	3
17415	4.71	40	50	24	1-1/2
17416	4.71	40	50	120	1-1/2
17417	4.71	40	50	240	1-1/2
17425	5.31	40	50	24	2
17426	5.31	40	50	120	2
17427	5.31	40	50	240	2
17435	9.73	40	50	24	3
17436	9.73	40	50	120	3
17437	9.73	40	50	240	3
17535	26.48	50	65	24	3
17536	26.48	50	65	120	3
17537	26.48	50	65	240	3
17635	27.04	60	75	24	3
17636	27.04	60	75	120	3
17637	27.04	60	75	240	3
17735	50.09	75	90	24	3
17736	50.09	75	90	120	3
17737	50.09	75	90	240	3
17935	66.91	90	120	24	3
17936	66.91	90	120	120	3
17937	66.91	90	120	240	3
17999	5.54	Auxillary Contact - Fits 40A 3P Models			
17998	5.08	Auxillary Contact - Fits 50A & 60A 3P Models			
17997	5.08	Auxillary Contact - Fits 75A & 90A 3P Models			



SINGLE SECTION

370 Volt Oval	
MARS2 No.	Microfarad
12902	2
12903	3
12904	4
12905	5
12906	6
12907	7.5
12908	10
12909	12.5
12910	15
12912	17.5
12914	20
12915	25
12917	30
12918	35
12921	40
12923	45
12925	50
12924	55
12987	60
12988	65
12989	70
12990	80

440 Volt Oval	
MARS2 No.	Microfarad
12926	2
12919	2.5
12927	3
12928	4
12929	5
12930	6
12931	7.5
12932	10
12933	12.5
12934	15
12936	17.5
12937	20
12940	25
12941	30
12943	35
12945	40
12948	45
12949	50
12950	55
12951	60
12952	65
12830	70
12831	75
12840	80

370 Volt Round	
MARS2 No.	Microfarad
12992	2
12993	3
12994	4
12995	5
12996	6
12997	7.5
12998	10
12999	12.5
12710	15
12911	16
12712	17.5
12714	20
12715	25
12717	30
12718	35
12721	40
12723	45
12725	50
12726	55
12727	60
12828	65
12729	70
12899	80
12916	100

440 Volt Round	
MARS2 No.	Microfarad
12802	2
12803	3
12804	4
12805	5
12806	6
12807	7.5
12732	10
12733	12.5
12734	15
12736	17.5
12737	20
12740	25
12741	30
12743	35
12745	40
12748	45
12751	50
12752	55
12754	60
12758	70
12759	80
12868	90

DUAL SECTION

370 Volt Oval	
MARS2 No.	Microfarad
12841	15/3
12956	15/4
12957	15/5
12958	15/10
12959	17.5/4
12960	17.5/5
12961	20/3
12962	20/4
12963	20/5
12864	20/10
12964	20/15
12842	25/3
12965	25/4
12966	25/5
12843	25/7.5
12832	25/8
12867	25/10
12833	25/15
12844	30/3
12845	30/4
12969	30/5
12846	30/7.5
12847	30/10
12848	35/3
12971	35/4
12972	35/5
12849	35/7.5
12850	35/10
12851	40/3
12858	40/4
12871	40/5
12852	40/7.5
12834	40/10
12874	45/5
12853	45/7.5
12836	45/10
12837	45/15
12838	50/5
12854	55/5
12855	55/7.5
12839	60/5
12856	60/7.5
12857	60/10
12859	65/5
12863	80/5
12817	80/7.5

440 Volt Oval	
MARS2 No.	Microfarad
12765	10/5
12770	15/4
12771	15/5
12777	15/10
12880	20/5
12983	20/15
12884	25/5
12882	25/7.5
12883	25/10
12886	25/15
12881	30/4
12887	30/5
12982	30/7.5
12835	30/10
12985	35/3
12879	35/4
12885	35/5
12888	35/7.5
12876	35/8.5
12772	35/10
12877	40/3
12986	40/5
12889	40/7.5
12773	40/10
12890	45/5
12774	45/7.5
12808	50/5
12913	50/7.5
12775	55/5
12822	55/10
12809	60/5
12776	60/7.5
12810	65/10
12815	80/5
12898	80/7.5

370 Volt Round	
MARS2 No.	Microfarad
12701	15/3
12702	15/4
12703	15/5
12704	15/10
12705	17.5/4
12706	17.5/5
12707	20/4
12760	20/5
12716	20/7.5
12708	20/10
12709	20/15
12711	25/3
12875	25/4
12761	25/5
12762	25/7.5
12713	25/10
12720	30/3
12763	30/4
12764	30/5
12724	30/7.5
12728	30/10
12939	30/15
12730	35/3
12731	35/4
12766	35/5
12735	35/7.5
12738	35/10
12739	40/3
12767	40/4
12878	40/5
12768	40/7.5
12746	40/10
12747	45/3
12947	45/4
12769	45/5
12749	45/7.5
12750	45/10
12753	50/3
12755	50/5
12825	50/7.5
12757	50/10
12893	55/5
12894	55/7.5
12967	55/10
12976	60/3
12895	60/5
12896	60/7.5
12865	60/10
12742	65/5
12953	70/5
12954	70/7.5
12955	70/10
12744	75/5
12946	75/7.5
12984	75/10
12897	80/5
12819	80/7.5
12824	80/10
12722	80/12.5
12829	85/5
12756	85/7.5
12922	85/10

440 Volt Round	
MARS2 No.	Microfarad
12811	10/5
12818	15/5
12656	15/10
12650	17.5/5
12780	20/5
12654	20/7.5
12651	20/10
12812	20/15
12653	25/3
12655	25/4
12778	25/5
12779	25/7.5
12813	25/10
12814	25/15
12826	30/3
12820	30/4
12781	30/5
12782	30/7.5
12652	30/10
12977	35/3
12870	35/4
12783	35/5
12784	35/7.5
12797	35/10
12978	40/3
12785	40/4
12786	40/5
12920	40/6
12787	40/7.5
12798	40/10
12979	45/3
12891	45/4
12788	45/5
12827	45/6
12789	45/7.5
12872	45/10
12790	50/5
12791	50/7.5
12892	50/10
12719	50/12.5
12792	55/5
12793	55/7.5
12799	55/10
12860	60/3
12794	60/5
12795	60/7.5
12796	60/10
12861	60/12.5
12862	65/10
12823	70/5
12866	70/7.5
12869	70/10
12968	75/5
12901	75/7.5
12935	75/10
12801	80/5
12816	80/7.5
12821	80/10
12938	85/5
12942	85/7.5
12944	85/10



Components

MHS 2012



Is changing to



Start Capacitors

SINGLE SECTION

165 Volts AC

MARS2 No.	Microfarad
11975	72-88
11976	88-108
11977	108-130
11931	124-149
11932	145-175
11933	161-193
11934	189-227
11978	216-259
11935	233-292
11936	270-324
11979	340-408
11980	378-455
11994	400-480
11981	540-648
11982	710-850
11983	810-972

330 Volts AC

MARS2 No.	Microfarad
11955	21-25
11956	25-30
11957	30-36
11958	36-43
11959	43-56
11995	56-72
11960	64-77
11961	72-88
11962	88-108
11963	108-130
11964	130-156
11965	124-156
11992	135-162
11966	145-175
11967	161-193
11968	189-227
11969	216-259
11970	270-324
11993	300-360

DUAL SECTION

110/125 Dual Voltage AC

MARS2 No.	Microfarad
11902	21-25
11903	25-30
11904	30-36
11905	36-43
11906	43-56
11907	56-72
11908	72-88
11909	88-108
11910	108-130
11912	124-156
11911	130-156
11913	145-175
11914	161-193
11915	189-227
11916	200-240
11917	216-259
11918	233-292
11919	270-324
11920	300-360
11921	324-388
11922	340-408
11923	378-440
11924	400-480
11971	430-516
11925	460-552
11926	540-648
11927	590-708
11947	645-774
11928	708-850
11972	815-970
11929	829-995
11973	850-1020
11930	1000-1200
11974	1290-1548

220/250 Dual Voltage AC

MARS2 No.	Microfarad
11938	21-25
11939	25-30
11940	30-36
11941	36-43
11942	43-56
11943	56-72
11984	59-71
11937	64-77
11944	72-88
11945	88-108
11946	108-130
11948	124-156
11949	145-175
11950	161-193
11951	189-227
11952	216-259
11953	233-292
11954	270-324
11985	280-336
11986	320-384
11987	340-408
11988	378-455
11989	400-480
11990	430-516
11991	630-750



Is changing to



General Purpose Switching Relays

SPST and SPDT fan relays are among the most popular relays used in air conditioning today.

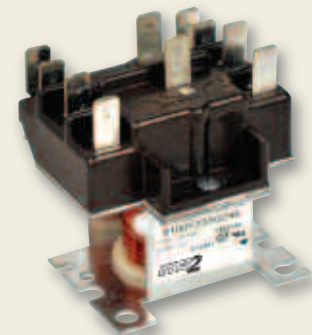
MARS2 No.	Normally Open Coil Voltage	Contact Rating 125/250 VAC		Replaces Essex/RBM No.	Price
		Inductive	Resistive		
SPST					
92290	24	8 amps	16 amps	90-290, 90-290Q	\$ 3.20
92291	110-120	continuous	16 amps	90-291, 90-291Q	3.52
92292	208/240	25 amps inrush	16 amps	90-292, 90-292Q	3.68
SPDT					
92293	24	8 amps	16 amps	90-293, 90-293Q	\$ 3.87
92294	110-120	continuous	16 amps	90-294, 90-294Q	4.11
92295	208/240	25 amps inrush	16 amps	90-295, 90-295Q	3.81



92290 92293 92360
92291 92294 92370
92292 92295 92380

25 Amp Switching Relays - 120V Contact Rating

MARS2 No.	Description	Coil Voltage	Replaces	Price
92360	SPST-NO	24	90360, 90360Q	\$ 3.23
92370	SPDT	24	90370, 90370Q	3.81
92380	SPNO-SPNC	24	90380, 90380Q	3.68



92340
92341
92342

2PDT HVAC Relays

MARS2 No.	Coil Voltage	Replaces	Price
92340	24	90-340	\$ 3.71
92341	110/120	90-341	4.07
92342	208/240	90-342	4.07

MARS2 Is changing to **JARD** by MARS **Pressure Switches**

Fixed setting pressure controls high pressure cut-outs

MARS offers the most complete line of high pressure cut-outs available.

Specifications:

- Contacts rated at 6 amps, 24-240 volts
- 1/4" female flare S.A.E. mounting
- 18" leads

Features:

- Tamper proof construction
- Direct mounting on tubing
- UL & CSA recognized



High Pressure Cut-Outs, Automatic Reset, Open On Pressure Rise, Normally Closed

MARS2 NO.	KLIXON NO.	OPENING PRESSURE	RESET PRESSURE
33916	PS80-K1-0348-350-250	350	245
33956	PS80-K1-0348-350-250	350	250
33919	PS80-K1-0353-375-265	375	265
33957	PS80-K1-0357-400-200	400	200
33922	PS80-K1-0358-400-280	400	280
33958	PS80-K1-0359-400-300	400	300
33925	PS80-K1-0360-425-300	425	300

MARS2 Is changing to **JARD** by MARS **Fixed Setting Pressure Controls**

MARS offers the most complete line of high pressure cut-outs available.

Specifications:

- Contacts rated at 6 amps, 24-240 volts
- 18" leads

Features:

- Tamper proof construction
- Direct mounting on tubing
- UL & CSA recognized



Low Pressure Control, Automatic Reset, Normally Open

MARS2 NO.	KLIXON NO.	OPENING PRESSURE	RESET PRESSURE	SWITCH ACTION (OPEN ON PRESSURE)	RESET PRESSURE
33929	PS80-K2-F0305-020-005	5	20		
33930	PS80-K2-F0307-025-010	10	25		
33933	PS80-K2-F0312-035-015	15	35		
33962	PS80-K2-F0316-050-025	25	50	Fall	1/4" Female S.A.E.
33936	PS80-K2-F0323-065-025	25	65		
33963	PS80-K2-F0325-080-025	25	80		
33964	PS80-K2-F0326-080-040	40	80		

Components

MHS 2012



Adjustable Delay-On-Make Timer

Best Buy!

- One unit covers all operating voltages & time delays
- Designed to delay energization & prevent short cycling
- Easy two wire installation
- Mounts in any position, compact size
- UL recognized



329

MARS2 No.	Voltage	Time Delay
32091	24-240	6 sec. - 8 min.

Economical/Durable/Rugged



Adjustable Delay-On-Break Timer

- Designed to prevent short cycling of air conditioning & heat pump compressors
- Dial adjustable or fixed
- Mounts in any position, compact size



329

MARS2 No.	Voltage	Time Delay	Description
32001	24-120-240	6 sec. - 5 min.	Adj. 2 terminal



MARS2 cast iron Watt Motors are used on refrigerators, freezers, food & beverage coolers, vending machines, display cases, and many other fan duty applications.

Features:

- Cast iron construction
- Universal mount
- Mounting screws included
- Individually boxed
- UL recognized



MARS2 NO.	WATTS	VOLTS	ROTATION	PRICE
15109	2	115	CW	\$ 11.23
15119*	9	115	CW	14.03
15211	4	115	CW	11.23
15212	4	115	CCW	11.23
15221	4	230	CW	11.23
15222	4	230	CCW	11.23
15311	6	115	CW	10.78
15312	6	115	CCW	10.78
15411	9	115	CW	11.23
15412	9	115	CCW	11.23
15421	9	230	CW	11.23
15422	9	230	CCW	11.23
15811	16	115	CW	16.84
15812	16	115	CCW	16.84
15821	16	230	CW	16.84
15822	16	230	CCW	16.84

*NOTE: 13" lead w/ Lyall Plug

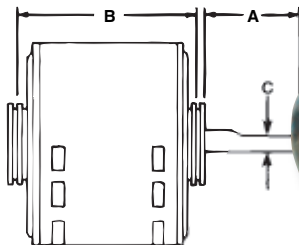
MARS Direct Drive Furnace Blower Motors

Features:

- All angle sleeve bearings
- 3 speeds
- 1/2 inch extended thru bolts
- 2 1/4 inch resilient rings
- Reversible rotation
- 4 inch long, 1/2 inch diameter shaft

Specifications:

- Single phase, 60 Hertz
- Overload protection
- Fan duty, continuous, air over
- Open construction
- 26 inch leads
- Class B insulation
- Rheem Shell mounting holes



MARS NO.	HP	ROT.	RPM/SP.	VOLTAGE	AMPS	CAP REQUIRED	ENCL.	BRG.	DIMENSIONS			PRICE
									A	B	C	
10583	1/4	Rev	1075/3	115	4.2	5/370	OAO	Slv	4.00	4.89	1/2	\$ 43.46
10584	1/4	Rev	1075/3	208-230	1.8	5/370	OAO	Slv	4.00	4.89	1/2	44.20
10585	1/3	Rev	1075/3	115	6.1	5/370	OAO	Slv	4.00	5.14	1/2	44.95
10586	1/3	Rev	1075/3	208-230	2.7	5/370	OAO	Slv	4.00	5.14	1/2	47.12
10587	1/2	Rev	1075/3	115	7.5	10/370	OAO	Slv	4.00	5.89	1/2	54.31
10588	1/2	Rev	1075/3	208-230	3.2	7.5/370	OAO	Slv	4.00	5.64	1/2	55.07
10589	3/4	Rev	1075/3	115	11.2	15/370	OAO	Slv	4.00	6.14	1/2	61.71
10590	3/4	Rev	1075/3	208-230	4.5	10/370	OAO	Slv	4.00	6.14	1/2	63.22

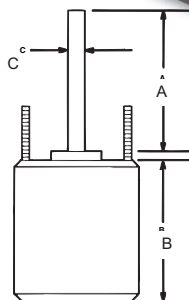
MARS Outdoor Condenser Fan Motors

Features:

- Reversible rotation
- Thru bolt or band mounting
- Water slinger on shaft
- Serrated end caps on vertical shaft-up models
- Full six inch shaft length

Specifications:

- Class B insulation
- Single phase, 60 Hertz
- Automatic thermal overload protected
- Fan duty, continuous, air over
- Rheem shell mounting holes



1075 RPM

MARS NO.	HP	ROT.	RPM/SP.	VOLTAGE	AMPS	CAP REQUIRED	ENCL.	BRG.	DIMENSIONS			PRICE
									A	B	C	
10727	1/6	Rev	1075/1	208-230	1.0	5/370	TEAO	Sleeve	6.00	4.23	1/2	\$ 39.99
10728	1/4	Rev	1075/1	208-230	1.8	5/370	TEAO	Sleeve	6.00	4.23	1/2	40.41
10729	1/3	Rev	1075/1	208-230	2.4	7.5/370	TEAO	Sleeve	6.00	5.23	1/2	42.92
10730	1/2	Rev	1075/1	208-230	3.5	10/370	TEAO	Sleeve	6.41	5.73	1/2	49.94
10731	3/4	Rev	1075/1	208-230	4.7	10/370	TEAO	Ball	6.00	6.23	1/2	63.01

825 RPM

MARS NO.	HP	ROT.	RPM/SP.	VOLTAGE	AMPS	CAP REQUIRED	ENCL.	BRG.	DIMENSIONS			PRICE
									A	B	C	
10403	1/6	Rev	825/1	208-230	1.0	5/370	TEAO	Sleeve	6.00	4.23	1/2	\$ 53.15
10404	1/4	Rev	825/1	208-230	2.2	5/370	TEAO	Sleeve	5.75	4.48	1/2	60.70
10405	1/3	Rev	825/1	208-230	1.9	7.5/370	TEAO	Sleeve	6.00	5.23	1/2	63.39
10746	1/2	Rev	825/1	208-230	2.8	7.5/370	TEAO	Sleeve	5.92	6.23	1/2	70.10

Motors

MHS 2012

MARS Multi-Horsepower Direct Drive Furnace Blower Motors

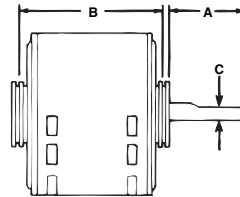
MARS Brand multi-horsepower direct drive blower motors are ideal for truck stock. Four models cover both 115 volt and 208-230 volt applications from 1/6 through 3/4 HP. All MARS brand multi-horsepower motors feature Rheem shell mounting holes.

Features:

- Single phase, 60 Hz
- Overload protection
- Class B insulation

Specifications:

- 2 1/2 inch resilient rings
- Reversible rotation



MARS NO.	HP	ROT.	RPM/SP.	VOLTAGE	ENCL.	BRG.	DIMENSIONS			PRICE
							A	B	C	
10463	1/6 - 1/2	Rev	1075/4	115	OAO	Slv	5.00	4.73	1/2	\$ 52.09
10464	1/6 - 1/2	Rev	1075/4	230	OAO	Slv	5.00	4.73	1/2	54.07
10466	1/5 - 3/4	Rev	1075/4	115	OAO	Ball	5.25	5.73	1/2	62.05
10467	1/5 - 3/4	Rev	1075/4	230	OAO	Ball	5.00	5.23	1/2	62.02

MARS Multi-Horsepower Condenser Fan Motors

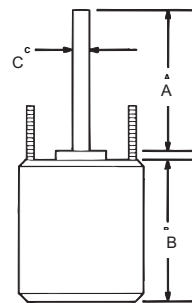
MARS Brand multi-horsepower condenser fan motors are ideal for truck stock. Three 1075 RPM models cover 208-230 volt applications from 1/6 to 1/2 HP. Two 825 RPM models cover 208-230 volt applications from 1/8 to 1/3 HP. All MARS brand multi-horsepower motors feature Rheem shell mounting holes.

Features:

- Thru bolt or band mounting
- Water slinger on shaft
- Air conditioning or heat pump duty

Specifications:

- Single phase, 60 Hz
- Overload protection
- Class B insulation



	MARS NO.	HP	ROT.	RPM/SP.	VOLTAGE	ENCL.	BRG.	DIMENSIONS			PRICE
								A	B	C	
The Wiz	10458	1/6 - 1/3	Rev	1075	208-230	TEAO	Ball	6.50	3.82	1/2	45.99
	10459	1/8 - 1/3	Rev	825	208-230	TEAO	Ball	6.50	5.48	1/2	53.19
	10465	1/6 - 1/3	Rev	1075/2	208-230	TEAO	Ball	5.00	4.73	1/2	48.45
	10468	1/5 - 1/2	Rev	1075/2	208-230	TEAO	Ball	5.00	5.48	1/2	55.92
	10469	1/6 - 1/3	Rev	825/2	208-230	TEAO	Ball	5.00	5.48	1/2	53.28



MARS Brand Condenser Fan Motors



Condenser Fan Motors

MARS Brand 70°C SunSlinger totally enclosed condenser fan motors are designed for either vertical shaft-up or shaft-down applications in a variety of ambient conditions. Shell and end shields are enclosed for weather protection. A weep hole is provided in each end shield to allow condensate to drain. All of these motors are suitable for air conditioning or heat pump applications. All MARS SunSlinger motors feature Rheem shell and Trane 4.33 bolt circle mounting holes.



1075 RPM – Reversible – 208-230 Volt – Single Speed

MARS NO.	HP	AMPS	CAP REQUIRED	DIMENSIONS			REPLACES				Price
				A	B	C	EMR #	AOS #	D'Tech #	GE Genteq	
20727	1/6	0.9	5/370	6.50	4.25	1/2	1859H	FE1016SF	WG840727HT	03727HS	\$ 45.00
20728	1/4	1.8	5/370	6.50	4.72	1/2	1860H	FE1026SF	WG840728HT	03728HS	45.78
20729	1/3	2.4	7.5/370	6.50	5.24	1/2	1861H	FE1036SF	WG840729HT	03729HS	50.29
20730	1/2	3.5	10/370	6.50	5.91	1/2	1862H	FE1056SF	WG840730HT	03730HS	56.52
20731	3/4	5.2	10/370	6.50	6.50	1/2	1868H	FE1076SF	WG840731HT	03731HS	68.23

825 RPM – Reversible – 208-230 Volt – Single Speed

MARS NO.	HP	AMPS	CAP REQUIRED	DIMENSIONS			REPLACES				Price
				A	B	C	EMR #	AOS #	D'Tech #	GE Genteq	
20403	1/6	1.0	5/370	6.50	4.52	1/2	1873H	FE1018SF	N/A	03403HS	\$ 57.53
20404	1/4	2.2	5/370	6.50	4.92	1/2	1874H	FE1028SF	WG840404HT	03404HS	65.71
20405	1/3	1.9	7.5/370	6.50	5.31	1/2	1875H	FE1038SF	WG840405HT	03405HS	68.62
20746	1/2	2.8	7.5/370	7.00	6.42	1/2	1870H	FE1058SF	N/A	03746HS	75.88

Multi-Horsepower Condenser Fan Motors

MARS Brand 70°C multi-horsepower SunSlinger condenser fan motors are ideal for truck stock. They are designed to provide reliable operation in a wide range of ambient temperatures. Three 1075 RPM models cover 208-230 volt applications from 1/6 to 1/2 HP. Two 825 RPM models cover 208-230 volt applications from 1/8 to 1/3 HP. All MARS SunSlinger motors feature Rheem shell and Trane 4.33 bolt circle mounting holes.



Two Speed – Reversible

MARS No.	HP	RPM/Speeds	VOLTAGE	AMPS	CAP REQ.	DIMENSIONS			REPLACES				Price
						A	B	C	EMR #	AOS #	D'Tech #	GE Genteq	
20465	1/6-1/3	1075/2	208-230	2.5	5/7.5/370	6.97	5.16	1/2	5462H	N/A	WG840465	03465HS	\$ 52.44
20468	1/5-1/2	1075/2	208-230	3.6	10/12.5/370	5.00	6.10	1/2	5465H	N/A	WG840468	03468HS	62.97
20469	1/6-1/3	825/2	208-230	2.2	10/7.5/370	5.00	6.10	1/2	5464H	N/A	WG840469	03469HS	64.00

Single Speed – Reversible

20458	1/6-1/3	1075	208-230	2.8	7.5/370	6.50	5.00	1/2	3323H	ORM5458BF	N/A	03458HS	54.87
20459	1/8-1/3	825	208-230	1.9	10/370	6.50	5.71	1/2	N/A	ORM5488BF	N/A	03459HS	65.63

Motors

MHS 2012

MARS 3.3" Commercial Refrigeration Motor

Replaces hundreds of OEM shaded pole evaporator fan motors found in Bohn, Nutone, Chandler, Larkin, Kramer, Climate Control, McQuay, Heatcraft & many more.

This PSC type motor allows the motor to deliver more power and less amp draw.

Reduce truck stock costs

Features:

- Mounting – belly band or extended thru bolts
- Thermally protected
- Open ventilation

Specifications:

- 60 Hz
- Sleeve bearing
- Single speed

Replaces 12 Motor Ratings:

1/12HP CW or CCW 115V or 230V
 1/15HP CW or CCW 115V or 230V
 1/20HP CW or CCW 115V or 230V



Cross Reference

- A O Smith 9721
- Emerson 9650, 9651, 9652, 9653, 9656, 9664
- Fasco D1127, D1101, D1103, D1122, D1123, D1124, D1125, D1126, D1152, D1154, PD1125, PD1127, 7163-2113, 7163-3371 7190-0442, 7190-2084 7190-2255, 7190-2285 7190-2969
- GE 5KSM59ES2001 5KSM59JSK143S 5KSM59JS5036S 5KSM59LS2262AS
- OEM Part Numbers 25308601, 25309101, 2531194, 2531195 7071061

1550 RPM – Reversible

MARS NO.	HP	VOLTS	AMPS	CAP INCLUDED
01127	1/12, 1/15, 1/20	115/230	1.1/0.6	7.5 MFD 370V



MARS Draft Inducer Blowers For High Efficiency Furnaces

Specifications:

- C-Frame
- 60 Hz
- Single speed

10702



10701



MARS NO.	OEM	OEM NO.	APPLICATION	VOLTS	AMP	RPM	BEARING TYPE	PRICE
10701	Rheem	70-24157-03	80+ furnace	120	1.71	3400	ball bearing	\$ 85.90
10702	Goodman	B40590-00	80+ furnace	115	1.40	3000	sleeve bearing	72.73
10704	Carrier	HC21ZE117	80+ furnace	115	1.80	—	ball bearing	41.62
10707	Lennox	88K8401	80+ furnace	120	1.30	3000	ball bearing	72.32

FASCO Draft Inducer Blower Assemblies

Always use an exact replacement when servicing draft inducer blowers!

See Your MARS Representative For Pricing



FIG. A
A079



FIG. B
A090



FIG. C
A134



FIG. D
A137



FIG. E
A150



FIG. F
A158



FIG. G
A170



FIG. H
A173

FASCO MODEL NO.	TYPE	VOLTS	SPD	AMPS	CROSS REF.	FIG	NOTES
A079	SP	115	1	1.1	Rheem Ruud 74-70-21496-03-01, 74-70-21504-03-04 Goodman B1859000, 7021-6804, JA1M106, JA1M137 Trane B1W24, WG94X167	A	
A090	SP	115	1	1.1	Rheem 70-21496-01, 7021-5239, JA1M102, 7021-5715	B	
A134	SP	115	1	1.5	InterCity Products 7021-9335, 7021-8735, 7021-9499, 7021-8736, 7021-7700	C	
A137	PSC	115	1	0.7	York International 7062-2442, 7062-3484, 024-25057-000	D	133
A150	SP	208-230	1	0.5	Trane 7021-7833, 7021-8928	E	
A158	PSC	115	1	4.5	Amana 7062-3151, 7062-3703	F	133
A170	SP	115	1	2.3	InterCity Products 7021-10299, 7021-10702	G	
A173	PSC	115	1	0.8	InterCity Products 7062-4785, Alltemp (ROTOM) 7062-4832	H	

NOTES: 133: 4M 250V Capacitor included

Please see the new MARS Fasco Motor Products Catalog, MARS #98599 for information on all Fasco products stocked by MARS.

Motors

MHS 2012



GE Commercial Motors

By Regal-Beloit

Outdoor Condenser Fan Motors

1075 Rpm Shaft-Up, Single Speed, Standard Efficiency

208-230 Volt Sleeve Bearings

MARS NO.	Description
03327	1/6 hp
03328	1/4 hp
03329	1/3 hp
03330	1/2 hp
03331	3/4 hp

208-230 Volt Ball Bearings

MARS NO.	Description
03736	1/4 hp
03737	1/3 hp
03738	1/2 hp
03739	3/4 hp



1075 RPM Shaft-Up/Down, Single Speed All Angle, Standard Efficiency

208-230 Volt Sleeve Bearings

MARS NO.	Description
03727	1/6 hp
03728	1/4 hp
03729	1/3 hp
03730	1/2 hp
03731	3/4 hp

208-230 Volt Ball Bearings

MARS NO.	Description
03732	1/4 hp
03733	1/3 hp
03734	1/2 hp
03735	3/4 hp

Direct Drive Blower Motors

1075 RPM, Reversible Rotation, Standard Efficiency



Two Speed	
MARS NO.	Description
03383	115 volt 1/4 hp
03384	208-230 volt 1/4 hp
03385	115 volt 1/3 hp
03386	208-230 volt 1/3 hp
03387	115 volt 1/2 hp
03388	208-230 volt 1/2 hp
03389	115 volt 3/4 hp
03390	208-230 volt 3/4 hp

Three Speed	
MARS NO.	Description
03583	115 volt 1/4 hp
03584	208-230 volt 1/4 hp
03585	115 volt 1/3 hp
03586	208-230 volt 1/3 hp
03587	115 volt 1/2 hp
03588	208-230 volt 1/2 hp
03589	115 volt 3/4 hp
03590	208-230 volt 3/4 hp





Manufactured by...

GE Commercial Motors

By Regal-Beloit

The Wizard

2 Wire Magic



- *Quick and Simple 2 Wire Installation*
- *Ball Bearing Construction*
- *Just ONE Capacitor*
- *4 Models Cover All 1/6-1/2 HP Condenser Fan Applications*
- *All Angle Mounting*
- *Rheem Mounting Holes*

03458	1075 RPM (7.5x370 cap, MARS 12007, 12907)
03459	825 RPM (10x370 cap, MARS 12008, 12908)
03460	1075 RPM (10x370 cap, MARS 12018, 12098)
03461	825 RPM (20x370 cap, MARS 12014, 12914)

\$57.92
\$63.61
\$71.53
\$78.12

The Wizard

03458 Replaces...

Emerson: RESCUE 5458
 K55HXTDD-8385
 Consolidator II
 A O Smith: ORM5458
 Rheem: 51-20668-11
 51-20655-11
 51-20654-11
 51-20653-11

03459 Replaces...

Emerson: RESCUE 5464
 A O Smith: ORM5488B
 ...and
Hundreds More!



GE Commercial Motors

39 Frame SOS Multi-Horsepower Motors

1/2 HP Direct Drive Motors

By Regal-Beloit

MARS SOS No.	Mfg.	Maximum HP	Volts	RPM/Speeds	Rot.	Price
03463	5KCP39KGV804S	1/2	115	1075/4	Rev.	\$ 64.86
03464	5KCP39KGV805S	1/2	208-230	1075/4	Rev.	65.94

5-1/2 inch dia., open endshields, sleeve bearing, capacitor required, Rheem shell mounting holes, extended mounting studs, resilient rings

Motor	Capacitor	Speeds to Use	#03463 FLA	#03464 FLA
1/2HP	10/370	All Speeds	6.2	3.6
1/3HP	5/370 or 7.5/370*	All Speeds	6.1	3.5
1/4HP	5/370 or 7.5/370*	Med-Hi Med-Lo:Lo	4.4	2.8
1/5HP	5/370 or 7.5/370*	Med-Lo:Lo	3.2	1.9
1/6HP	5/370 or 7.5/370*	Lo	2.4	1.3

* using a 7.5 MFD/370V capacitor will result in approximately 10% stronger motor



MARS# 03463 115V
MARS# 03464 208-230V
MARS# 03466 115V
MARS# 03467 208-230V

3/4 HP Direct Drive Motors

MARS SOS No.	Mfg.	Maximum HP	Volts	RPM/Speeds	Rot.	Price
03466	5KCP39SGU363S	3/4	115	1075/4	Rev.	\$ 78.28
03467	5KCP39NGU364S	3/4	208-230	1075/4	Rev.	79.78

5-1/2 inch dia., open endshields, ball bearing, capacitor required, Rheem shell mounting holes, extended mounting studs, resilient rings

Motor	Capacitor	Speeds to Use	#03466 FLA	#03467 FLA
3/4HP	20/370	All Speeds	8.1	3.5
1/2HP	10/370	All Speeds	6.6	2.7
1/3HP	10/370	Med-Hi Med-Lo:Lo	4.6	1.4
1/4HP	10/370	Med-Lo:Lo	3.8	1.1
1/5HP	10/370	Lo	3.1	1.0

MARS# 03465 208-230V
MARS# 03468 208-230V
MARS# 03469 208-230V



MARS #03465

HP	Speed to Use	208V	230V	FLA
1/3HP	Hi	7.5/370	5/370	2.6
1/4HP	Hi	7.5/370	5/370	2.5
1/5HP	Lo	7.5/370	5/370	2.0
1/6HP	Lo	7.5/370	5/370	1.8

Condenser Fan Motors

	MARS SOS No.	Mfg.	Maximum HP	Volts	RPM/Speeds	Rot.	Price
Wizard	03458	5KCP39JGU530S	1/3	208-230	1075	Rev.	\$ 57.92
Wizard 825	03459	5KCP39PGU627S	1/3	208-230	825	Rev.	63.61
Wizard	03460	5KCP39RGU709S	1/2	208-230	1075	Rev.	71.53
Wizard 825	03461	5KCP39TFBA865	1/2	208-230	825	Rev.	78.12
	03465	5KCP39KGU361S	1/3	208-230	1075/2	Rev.	59.32
	03468	5KCP39PGU419S	1/2	208-230	1075/2	Rev.	73.16
	03469	5KCP39PGU418S	1/3	208-230	825/2	Rev.	65.16

5-1/2 inch dia., totally enclosed, ball bearing, capacitor required noted on motor label, extended mounting studs, shaft slinger

MARS #03468

HP	Speed to Use	208V	230V	FLA
1/2HP	Hi	12.5/370	10/370	3.0
1/3HP	Hi	12.5/370	10/370	2.2
1/4HP	Lo	12.5/370	10/370	1.6
1/5HP	Lo	12.5/370	10/370	1.3

MARS #03469

HP	Speed to Use	208V	230V	FLA
1/3HP	Hi	10/370	7.5/370	1.9
1/4HP	Hi	10/370	7.5/370	1.5
1/5HP	Lo	10/370	7.5/370	1.2
1/6HP	Lo	10/370	7.5/370	1.0



Toll Free (800) 445-4155 • Fax (631) 348-7160 • www.marsdelivers.com

Commercial Outdoor Condenser Fan Motors

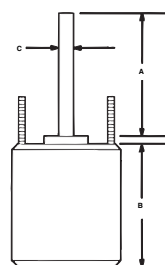
GE commercial outdoor condenser fan motors are designed for all angle air conditioning or heat pump applications. A weep hole is provided in each end shield to allow condensate to drain.

Features:

- All angle, ball bearing
- 70°C Ambient
- Extended thru bolt or band mounting
- Totally enclosed air over
- 6" Shaft w/5 1/2" flat

Specifications:

- 1 & 2 Speed, Single Phase
- 48" Leads
- 60/50 Hertz
- Reversible rotation
- Class B Insulation
- Thermal Overload Protection
- UL & CSA

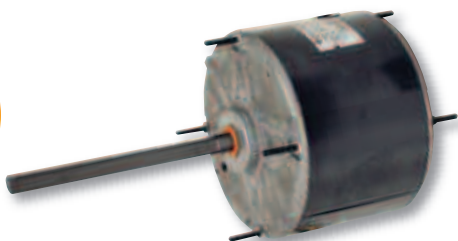


See Your MARS Representative For Special Prices



Reversible Rotation - Ball Bearing

MARS NO.	GE NO. 5KCP39	HP	VOLTS	MAX AMPS	CAP REQ	DIM. A	DIM. B	DIM. C	HERTZ	MOUNTING
1625 RPM - Two Speed										
3C001	FGU959S	1/4	208-230	1.3	5/370	6.0	4.52	1/2	60/50	Rheem Mounting Holes In Shell
3C002	JGU960S	1/3	208-230	1.8	5/370	6.0	5.69	1/2	60/50	
3C003	PGU961S	1/2	208-230	2.5	7.5/370	6.0	6.44	1/2	60/50	



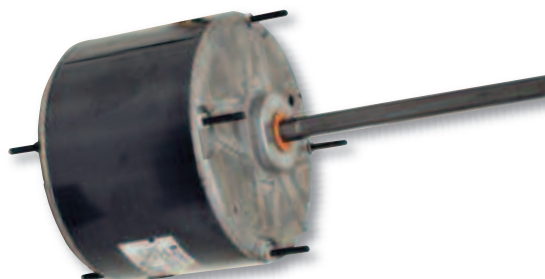
Cross Reference			
MARS No.	AOS	Emerson	Marathon
3C001	FS1024S, 456	1890	X467, X463
3C002	665A	1891	X466
3C003	FSE1054, 666A	1892	X468, X464

Reversible Rotation - Ball Bearing

MARS NO.	GE NO. 5KCP39	HP	VOLTS	MAX AMPS	CAP REQ	DIM. A	DIM. B	DIM. C	HERTZ
825 RPM - Two Speed									
03209	NFBA76S	1/3	460	1.1	10/370	6.0	5.44	1/2	60
03743	TFBA85S	1/2	460	1.9	10/370	6.0	6.69	1/2	60

Features:

- Serrated end caps on vertical shaft up models
- Water slinger on shaft
- Thru bolt or band mounting
- 60 Hertz
- 26" leads
- Lead end endshield open construction



Reversible Rotation - Ball Bearing

MARS NO.	GE NO. 5KCP39	HP	VOLTS	MAX AMPS	CAP REQ	DIM. A	DIM. B	DIM. C
1075 RPM - Shaft-Up - Single Speed - Ball Bearing - 6 Pole								
03736 ^{(1) (2)}	FGL782S	1/4	460	.9	7.5/370	6.0	4.30	1/2
03737 ^{(1) (2)}	MGL796S	1/3	460	1.3	7.5/370	6.0	5.30	1/2
03738 ^{(1) (2)}	PGL795S	1/2	460	1.4	10/370	6.0	5.80	1/2
03739 ^{(1) (2)}	SGL794S	3/4	460	2.03	15/370	6.0	6.50	1/2

(1) 60 Hertz Only (2) 70° Heat Shield

Motors

MHS 2012

Commercial Direct Drive PSC Blower Motors

GE direct drive blower motors are designed for replacement applications in commercial building systems for Air conditioning (VAV) and Heating applications. All are high efficiency, energy saver motors.

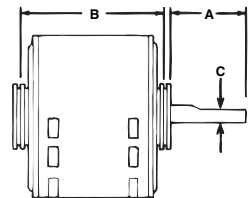


Features:

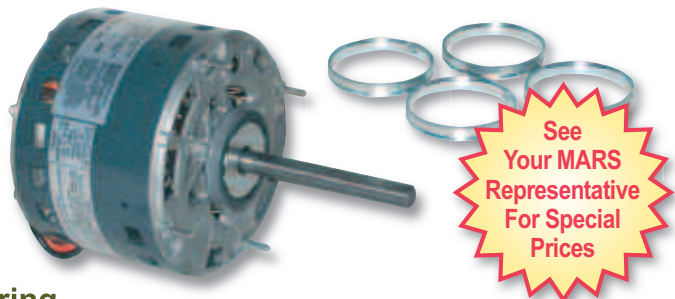
- All angle mounting, ball bearings
- 65% minimum efficiency, except 3D001 - 60% min. efficiency
- 6 1/2" Shaft w/5 1/2" flats
- Double shaft flats on 3/4 HP motors
- Ring kit allows 2 1/4 & 2 1/2 resilient ring mounting
- Reversible rotation with reversing plug
- Extended thru bolts on each end

Specifications:

- Single phase, 60/50HZ
- 50°C ambient (4 Speed), 60°C ambient (3 Speed)
- Open construction
- Fan duty, continuous, air over
- Thermal overload protection
- Class B insulation
- UL & CSA



Cross Reference			
MARS No.	AOS	Emerson	Marathon
3D001	7FD1016		
3D002	7FD1026	600	X018
3D003	7FD1036	601	X019
3D004	7FD1056	602	X020
3D005	9605A	5847	X021
3D006	BDH1036	8945	X037
3D007			X038
3D008	BDH1076	8947	X039



Reversible Rotation - High Efficiency - Ball Bearing

MARS NO.	GE NO. 5KCP39	HP	VOLTS	MAX AMPS	CAP REQ	DIM. A	DIM. B	DIM. C	MOUNTING
1075 RPM - Four Speed - 4 pole									
3D001	EGU953S	1/6	277/230	0.78	5/370	6.5	4.19	1/2	Rheem Mounting Holes In Shell
3D002	JGBC28S	1/4	277/230	1.1	5/370	6.5	4.69	1/2	
3D003	MGU949S	1/3	277/230	0.87	7.5/370	6.5	5.19	1/2	
3D004	PGBC29S	1/2	277/230	3.1	7.5/370	6.5	5.69	1/2	
3D005	SGBC30S	3/4	277/230	3.6	10/370	6.5	6.19	1/2	

MARS NO.	GE NO. 5KCP39	HP	VOLTS	MAX AMPS	CAP REQ	DIM. A	DIM. A	DIM. A	MOUNTING
1075 RPM - Three Speed - 4 pole									
3D006	MGU956S	1/3	460	1.1	7.5/370	6.5	5.19	1/2	Rheem Mounting Holes In Shell
3D007	PGU957S	1/2	460	1.6	10.0/370	6.5	5.69	1/2	
3D008 ⁽¹⁾	SGU958S	3/4	460	2.1	15.0/370	6.5	6.19	1/2	

(1) 60 Hertz Only

Reversible Rotation - Energy Saver® - Sleeve Bearing


MARS NO.	GE NO. 5KCP39	HP	VOLTS	MAX AMPS	CAP REQ	DIM. A	DIM. B	DIM. C	BASE NO.
1075 RPM - Three Speed - 4 pole									
03992	FGE211T	1/4	115	2.7	10/370	4.0	4.89	1/2	08055
03993	FGE212T	1/4	208-230	1.2	5/370	4.0	4.89	1/2	08055
03994	HGE213T	1/3	115	3.9	15/370	4.0	5.39	1/2	08057
03995	HGE214T	1/3	208-230	1.9	5/370	4.0	5.39	1/2	08057
03996	MGE215T	1/2	115	6.0	15/370	4.0	5.64	1/2	08058
03997	LGE216T	1/2	208-230	2.8	7.5/370	4.0	5.64	1/2	08058
03998	PGE415T	3/4	115	8.5	15/370	4.0	6.14	1/2	08060
03999	PGE416T	3/4	208-230	4.0	7.5/370	4.0	6.14	1/2	08060

ECM Solutions

MARS, Your Primary Source For Commercial Refrigeration & HVAC ECM Solutions

Commercial Refrigeration Products & Applications

SSC™

 morrillmotors®
Evaporator/Condenser




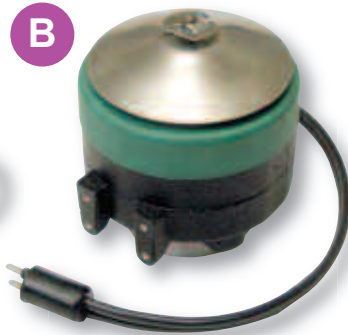
Unitronix Double Duty
Evaporator/Condenser

ARKTIC™ · 59

 morrillmotors®
Walk-In Evaporator

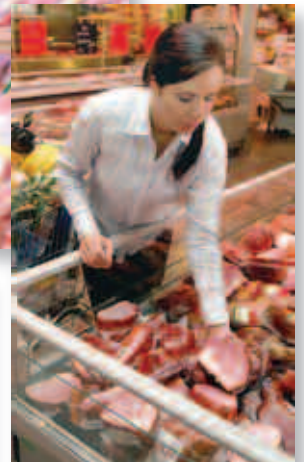
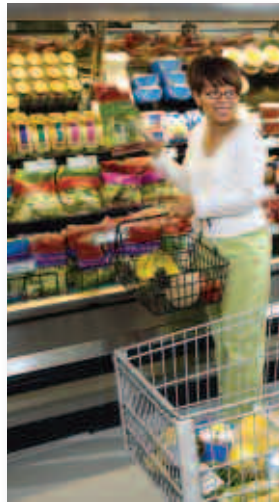
ARKTIC™ · 142

 morrillmotors®
Evaporator/Condenser Fans



Grocery Store/Convenience Store

- A B** Produce Coolers
- A B** Reach-in Glass Door Coolers
- A B** Reach-in Glass Door Freezers
- A B** Bakery/Deli Walk-up
- C D** Back of Store Walk-in Cooler
- C D** Back of Store Walk-in Freezer
- A B** Soda Vending Machine
- A B** Bottle Coolers at Registers
- D** Rooftop Condensers
- D** Back Room Parallel Rack Systems
- A B** Floral Display Cases
- A B** Water Fountains



Evergreen™ · IM HVAC Products & Applications

Fossil Fuel
Applications



Evergreen™ · CM

Commercial Air Handlers/
Heat Pumps

 genteq

Home



Motors

MHS 2012



Fossil Fuel Version



Average Annual Energy Savings

Heat and Cool Operation-
up to \$60 at 10¢ / kWh

Constant Fan Operation-
up to \$268 at 10¢ / kWh

Reduce your stock of PSC motors and stock Evergreen IM, your ULTIMATE retrofit!



MARS NO.	HP	VOLTS
06005	1/5, 1/4, 1/3, 1/2	115/230V
06010	1	115/230V

Evergreen Belly Band

- ✓ **Designed by RBC for Evergreen**
- ✓ **Tested by RBC for strength and sound**
- ✓ **Evergreen branded accessory**

MARS NO.	DESCRIPTION	MARS PACK	PRICE
08025	10" Bolt Pattern	1	\$ 15.77
08026	11" Bolt Pattern	1	16.55
08027	13" Bolt Pattern	1	20.99



Air Handlers/Heat Pumps



MARS NO.	HP	ROTATION	VOLTS	PRICE
06001	1/2	CCW	208-230	\$ 99.00
06002	1/2	CW	208-230	99.00
06004	1	CW	208-230	119.00

Evergreen vs Competitive Brand X

Feature	Evergreen™ · IM	Competitive Brand X **	Notes:
Motor Design	GE ECM Constant Torque Profile	Constant Torque	Both motors are electronically commutated brushless DC high efficiency designs.
Active Airflow Management	Yes	Yes	Both motors deliver higher CFM at high static when compared to a standard motor.
Default 600 RPM range Constant Fan Mode	Yes All you have to do is turn on FAN on your home thermostat and the motor knows you want quiet, low speed, low watts air circulation.	Yes Web Site shows a CF Relay used	Brand X Web Site shows a Constant Fan Relay used. Evergreen-IM can get Ultra Low speed Constant Fan in systems that do not have a Constant Fan Relay. Typically most units do not have a CF relay, therefore they have to use Cooling or Heating speeds for Constant Fan. In this case Evergreen's Constant Fan will be more efficient and quieter.
Number of Speeds	Three 5 Speed motors in One	5	More speeds equals more versatility.
Dual Auto Rotation	Yes	No	Evergreen automatically senses the correct blower rotation and programs itself for that rotation.
Soft Start and Stop	Yes	Yes	Motor ramps up and down at more gradual rate than PSC.
Standby Mode Electronics	Yes	No	Evergreen's electronic module remains powered at all times to minimize the wear of inrush currents.
Dual Voltage	Yes	No	
Number of SKU's	2	8	Evergreen reduces the cost of inventory.
20+ Years ECM Experience	Yes (GE Regal-Beloit)	No	Evergreen by Regal-Beloit is a 6th generation design from the leading manufacturer of proven OEM ECM motors.

** Comparison based on information obtained from Web Site and or Product literature as of February 2009



Double Duty

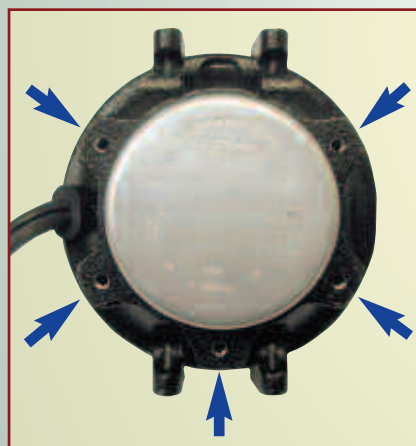
Evaporator/Condenser

Save Power on Both Sides!



Featuring:

Special Wide Temperature
Range Lubrication System



Mounting Holes:

- Universal Evaporator Mount
 - Standard 3-Hole
 - Custom Hussmann Style
- Universal Condenser Mount
 - Double Boss

Features:

- Constant speed program works to maintain nominal speed even in restricted air flow conditions
- High capacity oil reservoir + spiral grooved shaft for efficient distribution of oil to the bearing surface
- Mounting hardware included
- Water shield included
- Standard rear mounting holes drilled and tapped

Specifications:

- Cast iron motor shell
- Unit bearing
- EMF P-2-1A lyall power plug
- 15" leads

MARS NO.	APPLICATIONS	OUTPUT WATTS	VOLTS	NOMINAL AMPS	ROT OSE	RPM	MARS PACK	PRICE
00621	Evaporator/Condenser	6-12	115	.25	CW	1550	1	\$ 60.29
00621BULK	Evaporator/Condenser	6-12	115	.25	CW	1550	6	55.49
00622	Evap/Cond, 90°Lyall Plug	6-12	115	.25	CW	1550	1	60.29
00624	Evaporator/Condenser	14-16	115	.50	CW	1550	1	68.52
00624BULK	Evaporator/Condenser	14-16	115	.50	CW	1550	6	63.72
00625	Evap/Cond, 90°Lyall Plug	14-16	115	.50	CW	1550	1	68.52

Motors

MHS 2012



Features:

- Output 4-12W, 13-23 W
- ~66% peak efficiency
- Speed regulated within +/-6%
- 1 Discrete speed
- 51fr Unit Bearing Motor; Cast Aluminum frame
- 1/4"-20 threaded shaft
- Universal 5 hole mount
- Side pedestal mounting feet (2 sets standard)

MARS NO.	APPLICATION	OUTPUT WATTS	VOLTS	ROT	RPM	MARS PACK	PRICE
00650	Evaporator/Condenser	4-12	115	CW	1550	1	\$ 58.39
00651	Evaporator/Condenser	4-12	230	CW	1550	1	58.39
00652	Evaporator/Condenser (90° lyall plug)	4-12	115	CW	1550	1	58.39
00654	Evaporator/Condenser	13-23	115	CW	1550	1	63.70
00655	Evaporator/Condenser	13-23	230	CW	1550	1	63.70
00656	Evaporator/Condenser	13-23	115	CCW	1550	1	63.70
NEW 00657	Evaporator/Condenser	13-23	230	CCW	1550	1	63.70

ARKTIC™ 142

The ARKTIC 142 Series of ECM's manufactured by Morrill, offers significant energy savings over traditional PSC or shaded pole designs. ARKTIC 142 ECM's can be applied in condenser or evaporator applications requiring 1/5 or 1/3 HP output at 1050 RPM.

Applications:

Designed for condenser and evaporator fans for walk-in refrigerators, walk-in freezers and similar applications.

Features

- Three Phase Drive, NEMA 48FR BLDC Motor; TEAO
- 77% Motor Efficiency
- Regulated Speed; +/-6% Full Scale
- -40 Deg C to 55 Deg C Amb.
- 1/2" Diameter, Single Flat Shaft Ext. Up to 6.0"
- Totally enclosed, Non-vented (air-over ECM required)
- Shaft water slinger
- 26" cord set attached to motor
- Ball bearings
- Horizontal-vertical down orientation desired
- RoHS compliant
- 60/50 Hz



Save Up To
\$200
a Year

MARS NO.	HP	VOLTS	ROT	MAX AMPS	RPM	PRICE
03604	1/5	115	CW	4.6	1075	\$ 168.15
03605	1/5	208-230	CW	1.9-2.8	1075	168.15
03606	1/3	115	CCW	5.8	1075	171.81
03607	1/3	208-230	CCW	1.9-2.8	1075	171.81

ECR One Motor

ECR One ECM Evaporator condenser fan motor is higher in efficiency and uses 70% less energy!

Applications:

- Supermarket refrigerators
- Beverage merchandisers
- Vending machines
- Walk-in and reach-in coolers and freezers

MARS NO.	WATTS	VOLTAGE	RPM	ROT OSE	PRICE
05484	9	115	1500	CW	\$ 39.95



\$39.95
While supplies last!

ARKTIC™ 59

- ARKTIC 59 offers ultra-high efficiency to the commercial refrigeration industry for walk-in cooler and walk-in freezer applications.
- Universal horsepower, capable of replacing any 4 pole, 3.3" diameter shaded pole or PSC motor

Features:

- Totally enclosed, non-vented
- Shaft water slinger
- Standard thru-bolt configuration
- All angle mount
- Power cord with Lyall Plug

Specifications:

- Automatic torque variation, constant speed
- Low temp (-20° F) lubrication system
- 1550 RPM
- 50/60 Hz
- CUL (CE & VDE pending) UL file # E306123
- Ball bearing
- Thermally protected



**"Universal"
Fits All 3.3"
Evaporator Fan
Applications**



1550 RPM

MARS NO.	MFG. MODEL 5SME59	NOMINAL HP	VOLTS	AMPS	ROT OSE	MARS PACK	PRICE
05100	BLA 1036	1/15	115	1.30	CW	1	\$ 102.59
05100Bulk	BLA 1036	1/15	115	1.30	CW	48	88.12
05101	BLA 1038	1/15	115	1.30	CCW	1	102.59
05101Bulk	BLA 1038	1/15	115	1.30	CCW	48	88.12
05200	BLA 2037	1/15	208-230	0.80	CW	1	102.59
05200Bulk	BLA 2037	1/15	208-230	0.80	CW	48	88.12
05201	BLA 2039	1/15	208-230	0.80	CCW	1	102.59
05201Bulk	BLA 2039	1/15	208-230	0.80	CCW	48	88.12


**Save Up To
\$100
a Year**

1550/500 RPM - Two Speed - Front or Rear Thru Bolt Mount

MARS NO.	MFG. MODEL 5SME59	NOMINAL HP	VOLTS	AMPS	ROT. OSE	MARS PACK	PRICE
05125	BLA 1065	1/15	115	1.30	CCW	1	\$ 103.59
05126	BLA 1066	1/15	115	1.30	CW	1	103.59
05225	BLA 2070	1/15	208-230	0.80	CCW	1	103.59
05226	BLA 2071	1/15	208-230	0.80	CW	1	103.59

MARS No.	Description	MARS Pack	Price
08040	Krack Refrigeration Retrofit Bracket Kit	1	\$ 5.60



MARS2 Speed ARKTIC Controllers

The MARS2 speed ARKTIC controllers are a complementary technology for ECM 2 speed motors.

By implementing the controller, the ECM motor will automatically adjust RPM between high and low speed operation. The superior design allows for a single control unit to control up to 15 ECM motors within typical walk-in coolers and freezers.

MARS NO.	MFG. NO.	DESCRIPTION	PRICE
08038	FA-120V-1HP	2 Speed ARKTIC Controller 120V	\$ 129.95
08039	FA-208-277-1HP	2 Speed ARKTIC Controller 208/277	129.95



Motors

MHS 2012

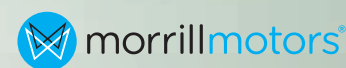
58 Series Fan Pack Replacement ECM Fan/Motor System

Complete Air Moving Package!

Consists of Motor, all metal Fan & all metal Shroud

Increased Durability

Optimize your performance with the ARKTIC SSC motor!



MARS NO.	DESCRIPTION	MARS PACK	PRICE
05470	1340 RPM 58mm fan pack	1	\$ 49.98
05471	1470 RPM 58mm fan pack	1	49.98
05472	1650 RPM 58mm fan pack	1	49.98

ECM 44 Frame For 51 Frame Commercial Refrigeration Applications

EM & S has developed an electronically commutated motor that can serve as a drop-in replacement of conventional vertical discharge 51 frame motors in 2-to-25 watt applications.



05443 \$59⁹⁵

05444 \$64⁹⁹

1/4-20 threaded shaft

MARS NO.	WATTS	RPM	ROT OSE	VOLTS
05443	9	1650	CW	115
05444	16	1850	CW	115

Application Notes:

- + Motor must be vertical shaft up to 60° from vertical for proper condensate drainage.
- + 05443 will replace most existing 9-12 watt unit bearing motors using 8-9" fans with 20-37 degree pitch blades.
- + 05444 will replace most unit bearing motors using 8-9" fans with 25-37 degree pitch blades.

Features:

- + high efficiency
- + improved reliability
- + energy savings of 66 percent over a wide speed range
- + specially designed labyrinth seal keeps water out of the motor during high pressure washing
- + low operating temperature
- + individually boxed
- + accessories included with each motor; (1) resilient fan silencer, (1) speed nut, (3) thread forming screws, (1) rainshield

ECM Motor Speed Controllers

MARS NO.	DESCRIPTION	PRICE
08032	ECM Motor Manual Speed Control, PWM Output, Enclosed, Finger Knob Adjust	\$ 24.56
08033	ECM Motor Variable Speed Control, Adjustable Minimum Speed, VDC/MA Input, PWM Output	35.95
08034	ECM Motor Manual Speed Control, PWM Output, No Enclosure, Screw Driver Adjust	15.63
08035	ECM Motor Variable Speed Control, No Adjustable Minimum Speed, VDC/MA Input, PWM Output	29.71



Scan with Smartphone for more details.



Evergreen CM is the world's first ultra-high-efficiency motor for replacing an existing blower motor in light commercial heating and cooling equipment.

It features flexible control methods using auto switch mode. Motor switches to variable speed mode when a PWM input is detected. Evergreen CM gives businesses the ability to simply upgrade their inefficient PSC motor with a high-efficiency ECM mode.

Features:

- Efficiency up to 80%
- Ready for building automation system control interface using a PWM speed controller
- Soft start and off Ramp for quieter operation
- Improved high static CFM performance
- 1050 RPM



Scan with Smartphone for more details.

MARS NO.	MODEL NO. 5SME59	HP	VOLTS	ROT OSE	FLA
06703	DXL227	1/3	277	CCW	2.6
06705	HXL228	1/2	277	CCW	3.6
06707	NXL229	3/4	277	CCW	4.9

06703 **\$160⁰⁰**
 06705 **\$173⁰⁰**
 06707 **\$205⁰⁰**

Motors

MHS 2012

ECM Motor Accessories



ECM Protectors Protect Your Investment

MARS #08552 **\$18.60**
For Use On GE X-13 ECM

MARS #08553 **\$18.60**
For OEM ECM Applications

- Fast Installation
- Saves Equipment

ECM protectors plug into existing motor connectors or plugs. They help to protect these valuable motors from voltage spikes, surges, and transients that often damage them.



ECM Repair Kit

MARS #08551 **\$12.21**

Repairs many ECM motor modules that have been damaged by voltage problems and power surges

- Full instructions included in kit
- Kit includes **OCPD** device and helpful circuit board releaser tool
- Using the kit requires a soldering gun or iron and rosin core solder

*Over Current Protection Device

Not every ECM module can be repaired. Because of this, the repair kit is not guaranteed to fix every motor-but because of the motor's high cost vs. the repair kit's low cost- it's often worth the effort.

OCPD*



Variable Speed Zebra



MARS #08550
\$215.78

Complete diagnostics for systems where an ECM motor is not working properly

Uses simple-to-operate microprocessor controlled tests to:

- Accurately diagnose exactly which component has failed
- Assist in system setup
- Allows easy adjustment of all available settings and options on ECM blower motors

Universal Zebra

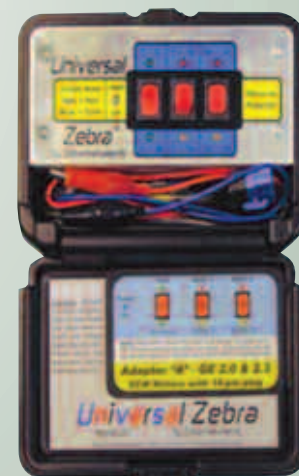
MARS #08554 **\$63.30**

A tool designed to troubleshoot every ECM motor in HVAC/R systems!

- Three 3-position switches test up to 6 speeds
- LED's indicate power and signals being sent
- Rugged case protects your tools & leads

Adapters for Universal Zebra

- Adapters quickly plug into motor and Universal Zebra
- Magnetic reference cards show what each switch does & what each LED means for that motor



MARS #		
08555	Adapter "A" -	\$ 16.23
	for GE 2.0 & 2.3 ECM's	
08556	Adapter "B" -	16.23
	for Genteq 3.0 ECM's	
08557	Adapter "C" -	16.23
	for X-13 & X-mtr ECM's	
08558	Adapter "E" -	16.23
	for ECM 142 & Signal Select ECM's	
08559	Adapter "F" -	16.23
	for Evergreen IM	
08560	24" Main Harness	16.23
	for Universal Zebra	
	(Extension or Replacement)	

NU Series Shaded Pole Motors

MARS is proud to introduce Elco NU Series shaded pole motors which are widely used in the HVAC & Refrigeration industry. These motors are suitable for all angle operation and have multiple mounting features. The NU series motors are used in industrial and commercial refrigeration for condensing and evaporating units, ventilating units, freezers, walk-in and reach-in coolers, food and beverage coolers and many other fan duty applications.

Features:

- Single speed
- Output 4 to 34 watts
- Totally enclosed
- Continuous air over
- 1 year limited warranty

Specifications:

- Impedance or thermally protected
- All Angle, sleeve bearing
- Class B insulation
- 50/60 Hz



MARS NO.	MFG. STOCK NO.	WATTS	ROT. SE	HP	VOLTS	AMPS	PROT	BLADE DIA. IN.	BLADE PITCH	AIR FLOW (CFM) @ 0 IN. STATIC	AIR FLOW (CFM) @ .1 IN. STATIC	PRICE
00801	EC4W115	4	CCW	1/185	115	0.36	Imp	6 7	28 22	137 141	69 72	\$ 19.99
00805	EC6W115	6	CCW	1/125	115 230	0.41 0.20	Imp	7 8	31 28	206 306	119 220	21.94 22.44
00806	EC6W230											
00807	EC9W115	9	CCW	1/83	115 230	0.58 0.35	Therm	8 9	22 28 28	262 325 418	186 240 301	22.59 23.25
00808	EC9W230											
00809	EC16W115											
00810	EC16W230	16	CCW	1/47	115 230	0.89 0.50	Therm	9 10	28 31 34	476 490 557	395 410 466	26.93 29.78
00810	EC16W230	18										
00817	EC34W115	34	CCW	1/20	115 230	1.60 0.80	Therm	12	19 28	796 1024	697 785	35.05 36.57
00818	EC34W230											
00891	Mounting Adaptor kit NU condenser motor											3.88

Elco ECM High Efficiency Motors

Elco Hi Efficiency ECM motors are drop in replacements of the traditional front mount shaded pole motors. They use all the same accessories with no extra work for an easy and hassle-free installation. These are built with ECM technology to run more efficiently, reduced CO² emissions, longer life expectancy and quieter than the normal PSC shaded pole motors. They offer better airflow control than a PSC, up to 70%, 4 to 5 times more efficient than a regular shaded pole motor. Higher efficiency means cooler motor operation and reduced heat delivered to the refrigeration cycle, for a combined energy saving advantage and improved refrigeration quality. The ECM Series offers IP65 moisture protection grade, one of the highest in the industry. These motors are designed to satisfy the growing demands of energy savings.

Features:

- Life expectancy of 60,000+ hrs.
- Protection rating - IP65 moisture protection grade
- Totally enclosed
- All angle
- Continuous air over
- Long life sealed ball bearings

Specifications:

- Working temp: -40°C +55°C
- 50/60 Hz
- M4 Studs on 3.72" B.C. for shroud/guard
- UL recognized & CE Certified



Cross Reference		
EDA12153UC0147	Arneg Canada & US	34410013, 34410009, 24681010
EDA15253UC0176	Hill Phoenix	P078449H
EDA10153UC0182	Hill Phoenix	P079441C, P066237A

MARS NO.	MFG. NO.	WATTS	HP	VOLTS	RPM	ROT. SE	AMPS	CORD LENGTH	TERM. PLUG	PRICE
00851	EDA12153UC0147	12	1/63	115	1450	CCW	0.18	14"	3 Pin 90°	\$ 56.77
00852	EDA15253UC0176	15	1/50	115	1600	CCW	0.22	16"	2 Pin 90°	62.49
00858	EDA10153UC0182	10	1/75	115	1550	CCW	0.19	16"	2 Pin 90°	58.68

12 Motors in One!

D1127 Multi-Horsepower Commercial Refrigeration Evaporator Motor

Model D1127 Specifications

HP	1/12, 1/15, 1/20
Volts	115/230
RPM	1550
Amps	1.1/0.6
Rotation	Rev
Switch	No
Speeds	1
Shaft	5/16" x 3"
Lubricant	Low Temp Oil

Available in Stock

• Replaces 12 Motor Ratings:

1/12 HP 115V CW	1/15 HP 115V CW	1/20 HP 115V CW
1/12 HP 115V CCW	1/15 HP 115V CCW	1/20 HP 115V CCW
1/12 HP 230V CW	1/15 HP 230V CW	1/20 HP 230V CW
1/12 HP 230V CCW	1/15 HP 230V CCW	1/20 HP 230V CCW

- Reversible
- Dual Voltage
- High Efficiency Energy-Saving PSC



\$44.95

Fasco Motor Quick Facts:

- 3.3" Diameter
- Open Ventillation
- Energy Efficient PSC
- Sleeve Bearing
- Thermally Protected
- UL Recognized
- CSA Certified

Great Truck Stock!

Can Be Applied In Hundreds Of...
 Bohn, Larkin, McQuay, Kramer & Other
 OEM Applications

See the MARS Motor Catalog - #98602 for complete offering of Fasco Motors.

Fan Coil A/C & Heating Unit Motors

See
Your MARS
Representative
For
Pricing

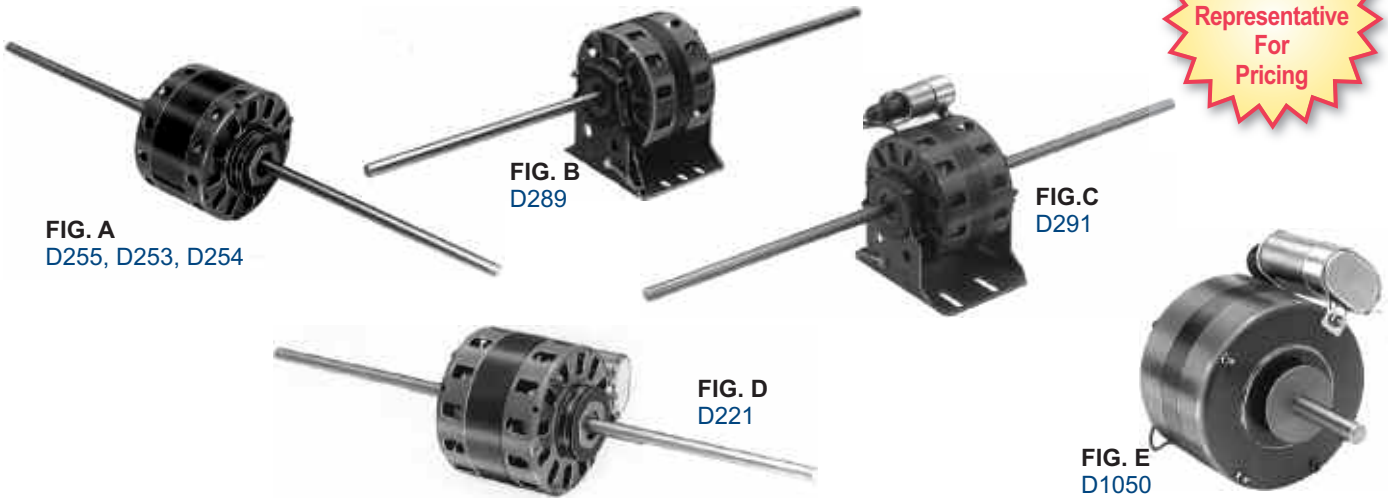


FIG. A
D255, D253, D254

FIG. B
D289

FIG. C
D291

FIG. D
D221

FIG. E
D1050

Sleeve Bearing

FASCO MODEL NO.	TYPE	HP	VOLTS	RPM	SPD.	AMPS	ENCLOSURE	ROT.	SHAFT DIM.	FIG.	NOTES
D255	SP	1/25-1/50-1/80	115	1050	3	1.5-1.6	Open Ventilated	DS	7-1/2 X 1/2 X 7-1/2	A	
D253	SP	1/20-1/40-1/50	115	1050	3	2.2-1.4-.8	Open Ventilated	DS	7-1/2 X 1/2 X 7-1/2	A	
D254	SP	1/15 -1/30-1/50	115	1050	3	2.1-1.3-.8	Open Ventilated	DS	8 X 3/8 X 8	A	
D289	SP	1/10-1/30-1/40-1/45-1/50	115	1050	5	3.6-1.6-1.2-.8-.6	Open Ventilated	DS	10-3/4 X 1/2 X 10-3/4	B	
D291	PSC	1/10-1/15 - 1/25-1/40	115	1050	4	2.2-1.4 - 1-.7	Open Ventilated	DS	10-3/4 X 1/2 X 10-3/4	C	20
D221	PSC	1/6-1/8-1/10-1/12	115	1550	4	3.2-1.7 - 1.3-1	Open Ventilated	DS	8 X 1/2 X 8	D	70
D1050	PSC	1/8	230	1550	1	1.1	Totally Enclosed	CW	1/2 X 3	E	

NOTES: 20: 4M 370V Capacitor included 70: 5M 370V Capacitor included

3.3 Dia. Evaporator Coil & Fan Motors Drop-In Replacements

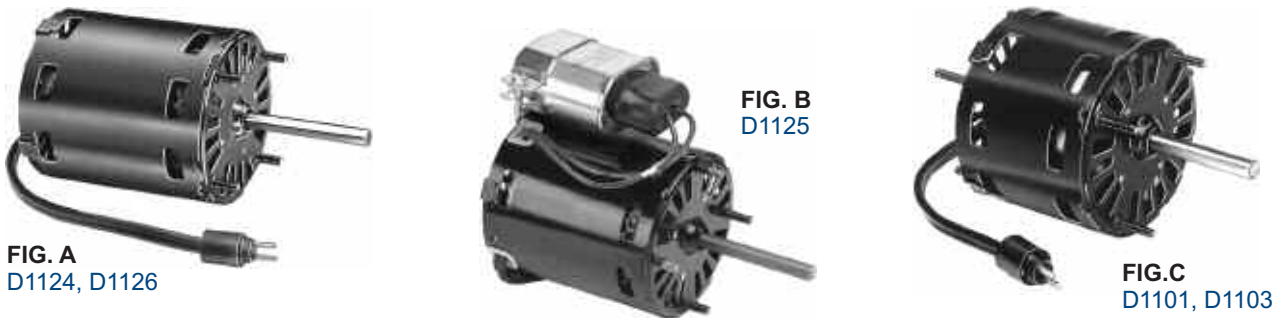


FIG. A
D1124, D1126

FIG. B
D1125

FIG. C
D1101, D1103

Sleeve Bearing

FASCO MODEL NO.	TYPE	HP	VOLTS	RPM	SPD.	AMPS	ENCLOSURE	ROT.	SHAFT DIM.	FIG.	NOTES
BOHN											
D1124	SP	1/20	115	1550	1	2.1	Open Ventilated	CW	5/16 X 3	A	33
D1126	SP	1/15	230	1550	1	1.1	Open Ventilated	CW	5/16 X 3	A	33
D1125	PSC	1/12	208-230	1550	1	0.4	Open Ventilated	CW	5/16 X 2-5/8	B	20,34
LARKIN COIL											
D1101	SP	1/20	115	1500	1	1.9	Open Ventilated	CCW	5/16 X 2-1/4	C	33
D1103	SP	1/20	208-230	1500	1	1.15	Open Ventilated	CCW	5/16 X 2-1/4	C	33

NOTES: 20: 4M 370V Capacitor included 33: Shell Turbo 68, low temp. oil (-40°F) 34: Bolt Circle = 3.15"

STOCK REPLACEMENT PRODUCTS

Motors

MHS 2012

Economical Exact Fit

3.3 Dia. Refrigeration Fan Motors

FIG. A
D471



See
Your MARS
Representative
For
Pricing

Shaded Pole, 1550 RPM, Single Speed, Sleeve Bearing

FASCO MODEL NO.	HP	VOLTS	AMPS	ENCLOSURE	ROT	SHAFT DIM.	CROSS REF.	FIG.	NOTES
D471	1/20	208 - 230	1.1	Open Ventilated	CCW	5/16 X 2-1/2	GE 1332	A	29,30

NOTES: 29: 3.9" diameter 30: Includes 1/2" studs for mounting

PSC Refrigeration Fan Motors
Reversible! Shaft Adapters Included!

FIG. A
D488, D489, D474



Dual Voltage, 115/208-230, Single Speed, Open Ventilated

FASCO MODEL NO.	TYPE	HP	RPM	AMPS	ROT	BRNG.	SHAFT DIM.	CROSS REF.	FIG.	NOTES
D488	PSC	1/20	1550	1.2 - .6	REV	SLV	3/8 X 3-1/3	GE 2341, 2342, 2331, 2332	A	15, 58, 66
D489	PSC	1/15	1550	1.2 - .6	REV	SLV	3/8 X 3-1/3	GE 2241, 2342, 2231, 2232	A	15, 58, 66
D474	PSC	1/10	1550	1.9 - 1.0	REV	SLV	3/8 X 3-1/3	GE 2141, 2142, 2131, 2132	A	15, 58, 66

NOTES: 15: Air Over 58: 3M 370V Capacitor Included 66: Front end shield drilled and tapped with four 10-32 threads on 3.5" bolt circle

Direct Drive Blower Motors



FIG. A
D927, D725, D723, D923,
D703, D730, D729



FIG. B
D1730,
D1731,
D1732,
D1733,
D1734,
D1735

PSC, 1075RPM, Open Ventilated, Reversible

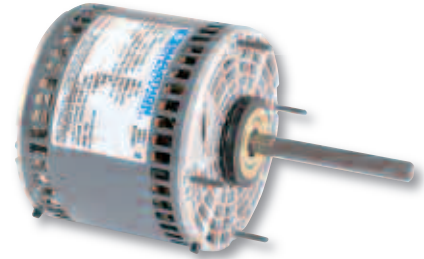
FASCO MODEL NO.	HP	VOLTS	SPD.	AMPS	BRNG.	SHAFT DIM.	FIG.	NOTES
OPEN CONSTRUCTION								
D927	1/6 - 1/8 - 1/10	208 - 230	3	1.4 - .9 - .5	SLV	1/2 X 6	A	68,95
D725	1/4 - 1/6 - 1/8	208 - 230	3	2.2 - 1.5 - 1.1	SLV	1/2 X 6	A	68,95
D723	1/3 - 1/4 - 1/6	208 - 230	3	3.3 - 2.3 - 1.8	SLV	1/2 X 6	A	68,95
D923	1/3 - 1/4 - 1/5	208 - 230	3	2.9 - 2.2 - 1.7	SLV	1/2 X 6	A	68,95
D703	1/2 - 1/3 - 1/4	208 - 230	3	4 - 2.7 - 2	SLV	1/2 X 6	A	48,68,95
D730	3/4 - 1/2	208 - 230	2	4.8 - 3.5	BALL	1/2 X 6	A	68,92,95
D729	3/4 - 1/2 - 1/3	208 - 230	3	5.4 - 3.8 - 2.9	SLV	1/2 X 6	A	68,92,95
D1730	1/4 - 1/5 - 1/6	115	3	4.8 - 3.3 - 2.6	SLV	1/2 X 6	B	
D1731	1/3 - 1/4 - 1/5	115	3	5.9 - 4.6 - 3.8	SLV	1/2 X 6	B	
D1732	1/2 - 1/3 - 1/4	115	3	7.7 - 5.5 - 4.2	SLV	1/2 X 6	B	92
D1733	1/4 - 1/5 - 1/6	208 - 230	3	2.2 - 1.6 - 1.2	SLV	1/2 X 6	B	
D1734	1/3 - 1/4 - 1/5	208 - 230	3	2.8 - 2.2 - 1.8	SLV	1/2 X 6	B	
D1735	1/2 - 1/3 - 1/4	208 - 230	3	3.4 - 2.5 - 1.9	SLV	1/2 X 6	B	

NOTES: 48: 7.5M 370V 68: Electrically Reversible 92: 10M 370V Capacitor 95: All angle mount bearings.

FASCO STOCK REPLACEMENT PRODUCTS



Motors For The Long Run!

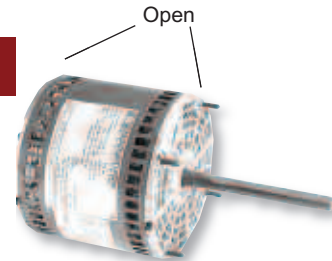


STOCK REPLACEMENT PRODUCTS

MARS NO.	MODEL NO.	DESCRIPTION	AO SMITH STOCK #	MAGNETEK STOCK #	FASCO PART #	EMERSON PART #	BALDOR PART #	NET PRICE
----------	-----------	-------------	------------------	------------------	--------------	----------------	---------------	-----------

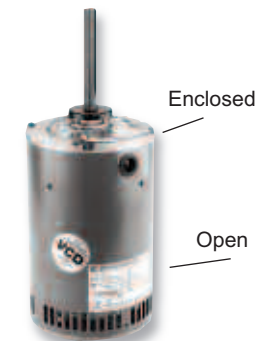
Direct Drive Fan & Blower, Reversing Plug, Sleeve, 1075/3, OAO

X000	048A110B1798	1/4HP 115V	DL1026	O533	D721	1863	---	\$ 58.44
X001	048A110B1799	1/4HP 208-230V	D1026	O530	D725	1971	---	60.04
X012	048A1702006	1/4HP 208-230V Sleeve (1625/1)	---	---	---	---	---	71.43
X002	048A110B1769	1/3HP 115V	DL1036	O532	D727	1864	---	60.79
X003	048A110B2042	1/3HP 208-230V	D1036	O529	D723	1972	---	62.32
X004	048A110B1755	1/2HP 115V	DL1056	O531	D701	1865	---	67.68
X005	048A1101756	1/2HP 208-230V	D1056	O528	D703	1973	---	73.33
X009	048A110787	3/4HP 115V	DL1076	O678	D726	8904	---	86.83
X010	048A1102046	3/4HP 208-230V	D1076	O679	D729	8905	---	89.08



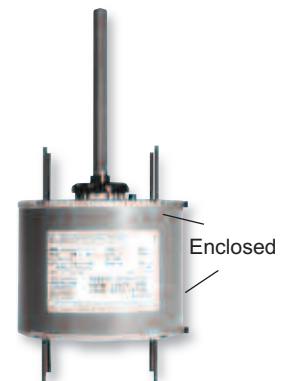
Condenser Fan, 3 Phase, OAO Ball

X500	056T1105300	1/2HP 200-230/460V	FC3056	H564	---	---	---	\$ 156.07
X501	056T1105301	3/4HP 200-230/460V	FC3076	H567	---	1817	CFM3146A	172.38
X502	056T1105302	1HP 200-230/460V	FC3106	H667	D6608	1818	CFM3156A	180.25
X507	056T805302	1HP 200-230/460V	---	H686	---	1828	---	236.79
X503	056T1105303	1.5HP 200-230/460V	FC3156	H767	D6610	1819	CFM3166A	196.71
X509	056T1105304	2HP 208-230/460V	---	H698	---	---	---	213.50



Condenser All Angle, TEAO, Reversing Plug, 1075/1, T-bolts

X411	048A11T2008	1/6HP 208-230V Ball	FSE1016SV1	184*	D917	1859	---	\$ 54.57
X467	048A17T87	1/4HP 208-230V Sleeve 1625/1	---	---	---	---	---	69.32
X412	048A11TB569	1/4HP 208-230V Sleeve	FSE1026SV1	176*	D909	1860	---	50.67
X456	048A11T578	1/4HP 460V Ball	---	---	---	---	---	84.29
X466	048A17T86	1/3HP 208-230V Sleeve 1625/1	---	---	---	---	---	76.10
X413	048A11TB529	1/3HP 208-230V Sleeve	FSE1036SV1	175*	D908	1861	---	57.97
X457	048A11T579	1/3HP 460V Ball	---	---	---	---	---	89.11
X468	048A17T96	1/2HP 208-230V Sleeve 1625/1	---	---	---	---	---	86.00
X414	048A11TB571	1/2HP 208-230V Sleeve	FSE1056SVA	187*	D740	1862	---	59.82
X458	048A11T580	1/2HP 460V Ball	---	---	---	---	---	98.70
X469	048A11T276	3/4HP 208-230V Sleeve	FSE1076SV1	779*	D933	1868	---	95.91
X459	048A11T581	3/4HP 460V Ball	---	---	---	---	---	111.04

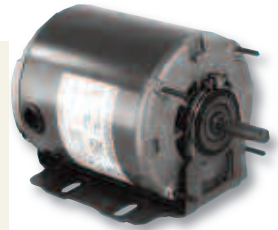


* No reversing plug

Motors

MHS 2012

MARS NO.	MODEL NO.	DESCRIPTION	NET PRICE	AO SMITH STOCK NO.	MAGNETEK STOCK NO.	FASCO PART NO.	EMERSON PART NO.	BALDOR PART NO.
Resilient Fan & Blower, Split Phase, 1725, Auto NEMA S.F., DP								
MD107*	048S17D2017	1/6HP 115V Sleeve	\$ 58.40	GF2014	801	---	839	---
B322	048S17D2053	1/6HP 115V Ball	65.64	RB2014	918	---	---	---
B302	048S17D2054	1/4HP 115V Ball (no AOL)	65.80	RB2026L	919	---	---	---
B303	048S17D2055	1/4HP 115V Ball	70.47	RB2024	808	---	2889	---
B304	048S17D2056	1/3HP 115V Ball (no AOL)	75.67	RB2034L	921	---	---	---
B305	048S17D2057	1/3HP 115V Ball	78.04	RB2034	922	---	2888	---
B306	048S17D2058	1/2HP 115V Ball (no AOL)	92.05	---	---	---	---	---
B307	048S17D2059	1/2HP 115V Ball	95.89	BF2054	---	---	2887	---
4309	5KH39QN9514T	3/4HP 115V (Sleeve)	117.00	GK2074	F681	---	3958	---



Belted Fan & Blower Special

**Buy 25 Mix & Match
To Receive An
Additional
2% Discount**

B206	048S17D2107	1/4HP 115V Sleeve	\$ 53.30	GF2024	802	---	8000	---
B207	048S17D2108	1/3HP 115V Sleeve	56.75	GF2034	805	---	8100	---
B208	048S17D2109	1/2HP 115V Sleeve	72.09	GF2054	811	---	8200	---

Resilient Fan & Blower, Cap Start, 1725, Auto NEMA S.F., DP Ball

B313	048C17D2042	1/4HP 115/208-230V	\$ 86.25	---	C196	---	---	RL1203A
B315	048C17D2044	1/3HP 115/208-230V	100.76	RBF1034A	---	---	180	---
B317	056C17D2072	1/2HP 115/208-230V	120.63	RB1054A	---	D6084	3874	RL1304A
B318	056C17D2073	3/4HP 115/208-230V	137.79	RB1074	C666	---	---	---
B319	056C17D2074	3/4HP 115/208-230V	147.22	RB1074A	---	D6086	3753	RL1307A



Resilient Fan & Blower, 3 Phase, 1725, Auto DP

K277	5K46KN4085	3/4HP 208-230/460V (no AOL)	\$ 116.32	---	H582	---	8750	RM3112
G100	056T17D2101	1HP 208-230/460V	144.37	RB3104A	H852	D6628	---	RM3116A
K1413	5K49KN2150X	1-1/2HP 208-230/460V (3450)	157.65	---	H843V1	---	---	RM3120A
K1416	5K49NN2147X	2HP 208-230/460V (3450)	168.82	BK3202AV1	---	---	---	RM3155A



Jet Pump, Cap Start, C-Face, Round Ball, 3450, Auto, 56J, Connected CW View OPE

C329	5KC37FN65X	1/3HP 115/208-230V	\$ 78.73	T1032	B321	---	---	JL225A
C331	5KC36JN269X	1/2HP 115/208-230V	85.51	T1052	B614	---	---	JL325A
C333	5KC39QN3129X	3/4HP 115/208-230V	100.10	T1072	B633	---	---	JL425A
C335	5KC39RN45X	1HP 115/208-230V	111.08	T1102	B719	---	---	JL525A
C337	5KC49NN2167X	1-1/2HP 115/208-230V	156.43	T1152	B737	---	---	---
C339	5KC49TN2170X	2HP 115/208-230V	191.87	T1202	B570	---	---	---
C341	5KCR48TN2174T	3HP 230V	305.98	---	---	---	---	---

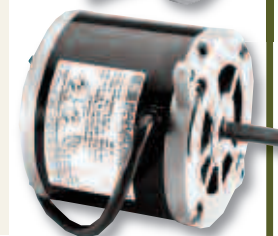


Oil Burners, PSC, NEMA 48 M Flange Mount, Ball, 3450 RPM

O700	048A34SU1000	1/7HP 115V-MOL	\$ 50.84	OBK6002	---	---	3248	---
O701	048A34SU1001 or 4777 (GE Brand)	1/7HP 115V-AOL	49.93 66.97	---	---	---	3247	---

Oil Burners, NEMA 48 N & M Flange Mount, Split Phase MOL

O005	048S34S2004	1/8HP 115V-48N	\$ 61.91	OL2002	---	---	2097	---
O600	048S17T286	1/8HP 115V-48N	54.23	EL2004V1	---	---	3196	---
O100	048S34S361	1/7HP 115V-48M	54.04	EL2002	---	---	3083	---
O102	048S34S2005	1/6HP 115V-48M	63.63	EL2012	---	---	---	---
O601	048S17T290	1/6HP 115V-48N	58.40	EL2014V1	---	---	3250	---
O012	048C34S24	1/5HP 115/230V-48N (cap st)	82.38	---	---	---	---	---
O004	048S34S2003	1/4HP 115V-48N	68.80	EL2022	---	---	2302	---
O002	048S17S25	1/4HP 115V-48N	70.39	EL2024	---	---	3254	---
O010	048C34D2024	1/3HP 115/208-230V-48N (cap st)	88.76	---	---	---	3268	---
O003	048S17S24	1/3HP 115V-48N	105.47	EL2034	---	---	3580	---
O011	048C34D2028	1/2HP 115/208-230V-48N (cap st)	109.08	---	---	---	3267	---



MARS NO.	MODEL NO.	DESCRIPTION	NET PRICE	AO SMITH STOCK NO.	MAGNETEK STOCK NO.	FASCO PART NO.	EMERSON PART NO.	BALDOR PART NO.
----------	-----------	-------------	-----------	--------------------	--------------------	----------------	------------------	-----------------

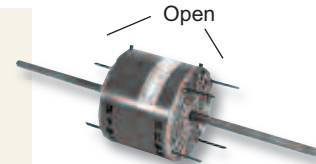
Jet Pump/Oil Burners, 56C Round, 3450 RPM, AOL or MOL, Ball

J1025	5KC37FN71X	1/3HP 115/208-230V, Auto	\$ 79.76	K1030	B450	---	---	VL225A
O211	056C34D2109	1/3HP 115/208-230V, Manual	78.21	---	---	---	3269	---
O210	056C34D2114	1/3HP 115/208-230V, Auto	75.08	K1032	C1081	---	---	---
O213	056C34D2099	1/2HP 115/208-230V, Auto	85.51	---	---	---	3272	---
O212	056C34D2098	1/2HP 115/208-230V, Auto	81.85	K1052	---	---	---	---
C330	5KC36JN268X	1/2HP 115/208-230V, Auto	81.85	K1050	---	---	---	VL325A
O215	056C34D2112	3/4HP 115/208-230V, Manual	99.59	---	---	---	3270	---
O214	056C34D2104	3/4HP 115/208-230V, Auto	96.47	K1072	---	---	---	---
C332	5KC39NN50X	3/4HP 115/208-230V, Auto	95.94	K1070	---	---	---	VL425A
C334	5KC39RN44X	1HP 115/208-230V, Auto	107.93	K1100	---	---	---	VL525A
O217	056C34D2105	1HP 115/208-230V, Manual	111.57	---	---	---	3271	---
O231	056B34D2028	1.5HP 115/208-230V, Manual	151.21	---	---	---	---	---
C336	5KC49NN2140X	1.5HP 115/208-230V, Auto	156.00	K1150	---	---	---	---
C338	5KC49TN2141X	2HP 115/208-230V, Auto	194.49	K1202	---	---	---	---



Double Shaft w/o Kits, 1075/3, OAO Sleeve

X049	048A110773	1/6HP 208-230V	\$ 67.18	RA1016	---	D752	3133	---
X050	048A110774	1/4HP 208-230V	67.85	RA1026	---	D755	3134	---
X052	048A110775	1/3HP 208-230V	76.95	RA1036	---	D758	3135	---
X067	048A1102014	1/2HP 208-230V	89.55	RA1056	---	D760	3136	---
X068	048A1102015	3/4HP 208-230V	102.13	RA1076	---	D763	---	---



Condenser Shaft Up, Reversing Plug, 1075/1, OAO Ball

X213	048A1101524	1/4HP 208-230V Sleeve	\$ 55.74	FS1026S	O500*	D749	3851	---
X087	048A1102029	1/4HP 208-230V	59.85	---	F1026SB	D7749	---	---
X423	048A1102055	1/4HP 460V	78.07	---	---	---	---	---
X214	048A1101525	1/3HP 208-230V Sleeve	59.56	FS1036S	O501*	D748	6880	---
X088	048A1102032	1/3HP 208-230V	64.19	---	F1036SB	D7748	---	---
X424	048A1102054	1/3HP 460V	93.75	---	---	---	---	---
X221	048A1101526	1/2HP 208-230V Sleeve	66.43	FS1056S	O502*	D745	3852	---
X089	048A1102035	1/2HP 208-230V	71.98	---	F1056SB	---	D7745	---
X400	048A1102017	1/2HP 460V	93.83	---	---	---	---	---
X298	048A1102059	3/4HP 208-230V Sleeve	73.65	FS1076S	738*	D929	3097	---
X090	048A1102007	3/4HP 208-230V	78.73	---	F1076SB	---	---	---
X099	048A1102016	3/4HP 460V	107.89	---	---	---	---	---



* No reversing plug

Condenser Shaft Down, Reversing Plug, 1075/1, OAO Sleeve

X278	048A8O206	1/8HP 208-230V (825/1)	\$ 71.66	FE1008S	---	D832	5456	---
X440	048A1102065	1/6HP 208-230V	55.72	---	184	---	---	---
X216	048A1101097	1/5HP 208-230V	54.53	619	---	D743	---	---
X441	048A1102062	1/4HP 208-230V	61.58	FS1026S	176*	D742	---	---
X442	048A1102064	1/3HP 208-230V	68.56	FS1036S	175*	D944	---	---
X443	048A1102063	1/2HP 208-230V	75.56	FS1056S	187*	D740	---	---
X444	048A1101596	3/4HP 208-230V	90.95	FSE10765V1	779*	---	---	---

* No reversing plug



Motors

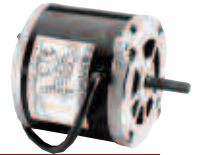
MHS 2012

Series 578 Heating Motors

Oil Burner, Single Phase Semi- & Totally Enclosed NEMA N and M Flange Mount

Applications: Direct replacement motors for residential and commercial oil burners and hot water pressure/steam cleaners.

- Features:**
- Quiet, economical sleeve bearings
 - 20" Long leads from a 1/2" NPT opening
 - Split phase and capacitor start designs
 - Catalog numbers O010 and O011 have dripproof enclosures
 - Semi- or totally enclosed steel frame (totally enclosed footnoted with N)
 - Two-bolt, NEMA N- or M-Flange direct mounting
 - 1.0 Service Factor



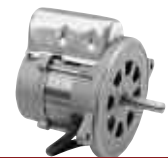
HP	RPM	VOLTS	FRAME	BRGS.	OVER LOAD	MARS NO.	MODEL NO.	F.L. AMPS	APPROX. WGT. LBS.	PRICE
1/8	1725	115	48N	BALL	MANUAL	O600*	48S17T286	2.8	11	\$ 54.23
1/7	3450	115	48M	SLEEVE	MANUAL	O100*	48S34S361	2.8	11	54.04
1/5	3450	115/230	48N	BALL	MANUAL	O012*	48C34S24	3.0/1.5	14	82.38
1/4	3450	115	48N	SLEEVE	MANUAL	O004*	48S34S2003	4.2	13	68.80
1/3	3450	115/208-230	48N	BALL	MANUAL	O010*	48C34D2024	5.6/2.7-2.8	14	88.76
	1725	115	48N	BALL	MANUAL	O003*	48S17S24	5.0	17	105.47
1/2	3450	115/208-230	48N	BALL	MANUAL	O011*	48C34D2028	7.4/3.5-3.7	16	109.08

* MARS Stock Model

Oil Burner, Single Phase PSC Semi-Enclosed, NEMA M Flange Mount

Applications: Replacement motors for mini pumps in residential or light commercial furnaces.

- Features:**
- High efficiency design
 - 14" cord for easy connection
 - Ultra quiet performance
 - UL Recognized and CSA Certified



HP	N/P RPM	VOLTS	FRAME	BRGS.	OVER LOAD	MARS NO.	MODEL NO.	F.L. AMPS	APPROX. WGT. LBS.	PRICE
1/7	3450	115	48M	BALL	AUTO	O701*	48A34SU1001	1.7	8	\$ 49.93

* MARS Stock Model

Oil Burner, Single Phase, Dripproof, C-Face Mount

Applications: Replacement motors for commercial and industrial oil burners.

- Features:**
- Ball Bearings
 - Split Phase and capacitor start designs
 - NEMA Jet Pump Service Factors
 - Moderate starting torque
 - Manual or automatic reset thermal protector
 - NEMA 56C direct mounting
 - UL Recognized and CSA Certified



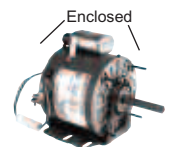
HP	RPM	VOLTS	FRAME	BRGS.	OVER LOAD	MARS NO.	MODEL NO.	SERVICE FACTOR	F.L. AMPS	APPROX. WGT. LBS.	PRICE
1/3	3600	115/208-230	56C	BALL	MANUAL	O211*	56C34D2109	1.75	5.6/2.7-2.8	14	\$ 78.21
	3600	115/208-230	56C	BALL	AUTO	O210*	56C34D2114	1.75	5.6/2.7-2.8	14	75.08
3/4	3600	115/208-230	56C	BALL	AUTO	O214*	56C34D2104	1.5	9.8/4.8-4.9	20	96.47

* MARS Stock Model

Unit Heater, Single Phase, PSC Totally Enclosed Air Over, Resilient Base

Applications: Replacement motors for unit heaters. Air over motors need to be mounted within the airstream for proper cooling.

- Features:**
- Totally enclosed
 - Direct drive, air over
 - Ball Bearings
 - Horizontal or vertical mount
 - Weather resistant reversing plug
 - BX connector mounted in frame
 - 1" Extended thru-bolts
 - 48Y Frame has non-standard BA dimension
 - Automatic reset thermal protection
 - UL Recognized and CSA Certified
 - Capacitor included



HP	RPM	VOLTS	FRAME	MARS NO.	MODEL NO.	F.L. AMPS	APPROX. WGT. LBS.	FRAME LENGTH	SHAFT DIM.	PRICE
1/6	1625	115	48Y	X301*	48A17T72	2.0	13	5 1/4	1/2 x 2 3/4	\$ 82.06
	1075	115	48Y	X302*	48A11T199	3.0	12	4 3/4	1/2 x 2 3/4	85.07
1/4	1075	115	48Y	X303*	48A11T198	4.1	14	4 3/4	1/2 x 2 3/4	89.90
1/3	1075	115	48Y	X304*	48A11T201	6.5	21	6	1/2 x 2 3/4	100.15

* MARS Stock Model

Inverter Duty Commercial Condenser Fan Motors

Applications:

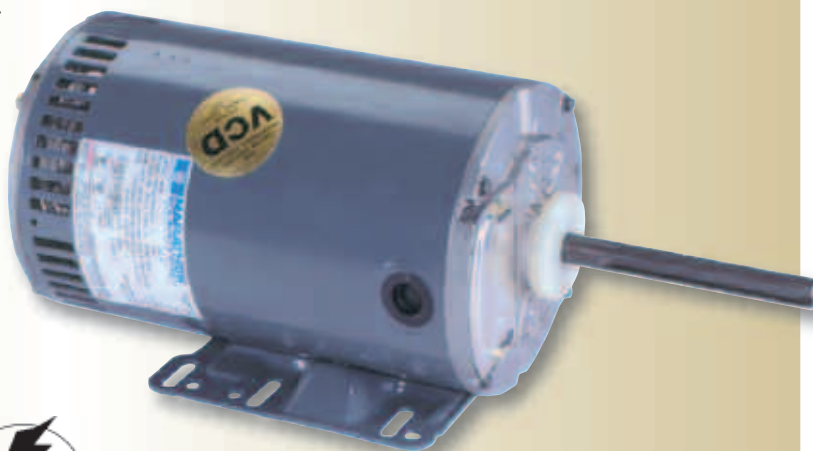
Inverter Duty commercial condenser fan motors may be installed outdoors. These motors need to be mounted within the airflow of the fan for proper cooling. Used on Trane, Carrier, Climatrol and York equipment, 5 tons and larger.

Features:

- Compact size for ease of installation and versatility
- 70° C ambient (except as noted)
- Class H insulation
- Double sealed ball bearings
- Patented VCD (voltage change device)
- UL recognized and CSA certified
- Continuous duty, air over
- Threaded lead exit
- Auto reset thermal protection
- Shaft slinger
- Hubs on both ends, will accept resilient base kits
- Enclosed shaft end bracket, vented frame
- Positioning screws
- Three phase
- 50/60 Hertz
- Reversible rotation



HVAC *Max*



Belly Band Mount

MARS NO.	HP	RPM	VOLTS	FRAME	MODEL NO.	F.L. AMPS
X502	1	1140	200-230/460	56Y	56T1105302	4.0-4.2/2.1
X507	1	850	200-230/460	56Y	56T805302	5.3-5.3/2.6
X503	1 1/2	1140	200-230/460	56Y	56T1105303	5.5-5.4/2.7
X530	1	850	208-230/460	56Y	56T805307	7.5-6.8/3.4
X509	2	1140	208-230/460	56Y	56T1105304	7.2-6.8/3.4

Rigid Base Mount

MARS NO.	HP	RPM	VOLTS	FRAME	MODEL NO.	F.L. AMPS
X513	1	1140	208-230/460	56HZ	56T1105305	4.1-4.2/2.1
X528	1	850	208-230/460	56HZ	56T805306	5.1-5.3/2.65
X523	1 1/2	1140	208-230/460	56HZ	56T1105306	5.45-5.4/2.7
X531	1	850	208-230/460	56HZ	56T8015504	7.0-7.0/3.5
X525	2	1140	208-230/460	56HZ	56T1105310	7.2-6.8/3.4

HVAC *Max*

Inverter Duty Motor Cross Reference

Marathon	A.O.Smith	Emerson
Belly Band		
X502	H1050	1818
X503	H1051	1819
X507	H1053	1828
X509	H1052	8987
X530	H1054	NA

Rigid Base

X513	H1050	1820
X523	H1051	1821
X525	H1052	1822
X528	H1053	NA
X531	H1054	NA

Motors

MHS 2012

Your One Source For Motors, Fan Blades, Blower Wheels, Blower Accessories, V-Belts & More!



Easy To Read Labels

Adapter Blades Heavy Duty Condenser Fan Blades

MARS 3, 4 & 5 wing adapter, heavy duty condenser fan blades are designed for rigorous R/HVAC pressure applications. They will accommodate universal hex/round adapter hubs for unlimited versatility. MARS adapter fan blades are durable, efficient, and quiet. They are manufactured using high strength aluminum alloy for the blades and sturdy steel for the blade spiders.

Blade depths and pitches specified for MARS adapter fan blades allow for the replacement of a broad range of commonly used fan blades.

Typical applications are:

- Air Cooled Condensers
- Residential Air Conditioners
- Heat Pumps
- Roof Top Air Conditioners
- Power Roof Ventilators
- Unit Heaters
- Fan Coil Units

- 2-Wing**
14" through 24" dia.
- 3-Wing**
10" through 24" dia.
- 4-Wing**
10" through 26" dia.
- 5-Wing**
16" through 30" dia.



See Your MARS Representative For Complete Line of Fan Blades & Accessories

Fan Blade & Hub Puller



MARS No.	Description	Price
40852	Fan Blade & Hub Puller	\$ 8.95

Fits All airMARS Adapter Fan Blades and Competitors' Adapter Fan Blades

Machined Steel Provides Greater Durability

Universal Adapter Hex Mount Hubs



Universal Hex Hubs

MARS No.	Bore	Per Pack	Price
40002	1/4"	1	\$ 4.03
40003	5/16"	1	4.03
40004	3/8"	1	4.03
40005	1/2"	1	4.03
40006	5/8"	1	4.19
40007	3/4"	1	4.19

Direct Drive Blower Wheels



See
Your MARS
Representative
For
Pricing

MARS is proud to offer a broad line of furnace blower wheels as the latest enhancement of the airMARS product line. These wheels are manufactured in the USA to exacting tolerances, and are drop-in replacements for practically all residential and light commercial HVAC equipment. Each wheel is statically and dynamically balanced for long life and efficient air flow. airMARS direct drive blower wheels are individually boxed in a custom designed, sturdy packaging. airMARS box labels are easy to read at a distance and show physical dimensions and cross reference.

Direct Drive Blower Wheels

MARS NO.	DIA. X W.	BORE	NOMINAL ROT.	DISC	DIA	CENTER WIDTH
41303	9-6	0.50	CW	Convex	9.50"	6.06"
41302	9-6	0.50	CCW	Convex	9.50"	6.06"
41301	9-6	0.50	CW	Concave	9.50"	6.06"
41300	9-6	0.50	CCW	Concave	9.50"	6.06"
41307	9-7	0.50	CW	Convex	9.50"	7.12"
41306	9-7	0.50	CCW	Convex	9.50"	7.12"
41305	9-7	0.50	CW	Concave	9.50"	7.12"
41304	9-7	0.50	CCW	Concave	9.50"	7.12"
41311	9-8	0.50	CW	Convex	9.50"	8.06"
41310	9-8	0.50	CCW	Convex	9.50"	8.06"
41309	9-8	0.50	CW	Concave	9.50"	8.06"
41308	9-8	0.50	CCW	Concave	9.50"	8.06"
41365	9-9	0.50	CW	Convex	9.50"	9.50"
41312	9-9	0.50	CW	Concave	9.50"	9.50"
41361	9-9	0.50	CCW	Concave	9.50"	9.50"
41314	10-4	0.50	CW	Convex	10.62"	4.50"
41313	10-4	0.50	CW	Concave	10.62"	4.50"
41316	10-6	0.50	CW	Concave	10.62"	6.06"
41318	10-6	0.50	CW	Convex	10.62"	6.06"
41321	10-6	0.62	CW	Convex	10.62"	6.06"
41317	10-6	0.50	CCW	Convex	10.62"	6.06"
41320	10-6	0.62	CW	Concave	10.62"	6.06"
41315	10-6	0.50	CCW	Concave	10.62"	6.06"
41319	10-6	0.62	CCW	Concave	10.62"	6.06"
41323	10-7	0.50	CW	Convex	10.62"	7.12"
41362	10-7	0.50	CCW	Convex	10.62"	7.12"
41322	10-7	0.50	CW	Concave	10.62"	7.12"
41327	10-8	0.50	CW	Convex	10.62"	8.06"
41326	10-8	0.50	CCW	Convex	10.62"	8.06"
41325	10-8	0.50	CW	Concave	10.62"	8.06"
41324	10-8	0.50	CCW	Concave	10.62"	8.06"

MARS NO.	DIA. X W.	BORE	NOMINAL ROT.	DISC	DIA	CENTER WIDTH
41331	10-9	0.50	CW	Convex	10.62"	9.50"
41330	10-9	0.50	CCW	Convex	10.62"	9.50"
41329	10-9	0.50	CW	Concave	10.62"	9.50"
41328	10-9	0.50	CCW	Concave	10.62"	9.50"
41335	10-10	0.50	CW	Convex	10.62"	10.68"
41334	10-10	0.50	CCW	Convex	10.62"	10.68"
41337	10-10	0.62	CW	Convex	10.62"	10.68"
41333	10-10	0.50	CW	Concave	10.62"	10.68"
41336	10-10	0.62	CW	Concave	10.62"	10.68"
41332	10-10	0.50	CCW	Concave	10.62"	10.68"
41339	11-6	0.50	CW	Convex	11.93"	6.06"
41341	11-7	0.50	CW	Convex	11.93"	7.12"
41340	11-7	0.50	CW	Concave	11.93"	7.12"
41344	11-8	0.50	CCW	Convex	11.93"	8.06"
41343	11-8	0.50	CW	Concave	11.93"	8.06"
41342	11-8	0.50	CCW	Concave	11.93"	8.06"
41345	11-8	0.50	CW	Convex	11.93"	8.06"
41349	11-9	0.50	CW	Convex	11.93"	9.50"
41348	11-9	0.50	CCW	Convex	11.93"	9.50"
41347	11-9	0.50	CW	Concave	11.93"	9.50"
41346	11-9	0.50	CCW	Concave	11.93"	9.50"
41352	11-10	0.50	CW	Convex	11.93"	10.68"
41351	11-10	0.50	CW	Convex	11.93"	10.68"
41350	11-10	0.50	CCW	Concave	11.93"	10.68"
41364	12-9	0.50	CW	Convex	12.87"	9.50"
41354	12-9	0.62	CW	Convex	12.87"	9.50"
41353	12-9	0.62	CW	Concave	12.87"	9.50"
41355	12-12	0.50	CW	Concave	12.87"	12.62"
41356	12-12	0.62	CW	Concave	12.87"	12.62"

MARS# Desc. Price

5L Belts (con't)

74264	5L420	\$ 4.45
74265	5L430	4.55
74266	5L440	4.64
74267	5L450	4.74
74268	5L460	4.83
74269	5L470	4.94
74270	5L480	5.06
74271	5L490	5.14
74272	5L500	5.22
74273	5L510	5.30
74274	5L520	5.38
74275	5L530	5.47
74276	5L540	5.54
74277	5L550	5.59
74278	5L560	5.63
74279	5L570	5.70
74280	5L580	5.73
74281	5L590	5.78
74282	5L600	5.81
74283	5L610	5.84
74284	5L620	5.90
74285	5L630	5.94
74286	5L640	6.01
74287	5L650	6.07
74288	5L660	6.17
74289	5L670	6.24
74290	5L680	6.32
74291	5L690	6.41
74292	5L700	6.47
74293	5L710	6.51
74294	5L720	6.60
74295	5L730	6.70
74296	5L740	6.77
74297	5L750	6.87
74298	5L760	6.94
74299	5L770	7.04
74300	5L780	7.12
74301	5L790	7.21
74302	5L800	7.31
74303	5L810	7.42
74304	5L820	7.52
74305	5L830	7.62
74306	5L840	7.71
74307	5L850	7.93
74308	5L860	7.98
74309	5L870	8.03
74310	5L880	8.10
74311	5L890	8.18
74312	5L900	8.27
74313	5L910	8.33
74314	5L920	8.44
74315	5L930	8.49
74316	5L940	8.63
74317	5L950	8.76
74318	5L960	8.90
74319	5L970	8.99
74320	5L980	9.08
74321	5L990	9.19
74322	5L1000	9.30

AX Belts

74556	AX21	4.27
74557	AX22	4.48
74558	AX23	4.67
74553	AX24	4.76
74560	AX25	4.82

MARS# Desc. Price

AX Belts (con't)

74566	AX26	\$ 5.05
74561	AX27	5.10
74555	AX28	5.20
74563	AX29	5.28
74564	AX30	5.33
74565	AX31	5.38
74554	AX32	5.49
74567	AX33	5.58
74568	AX34	5.70
74569	AX35	5.78
74570	AX36	5.88
74571	AX37	6.17
74572	AX38	6.22
74562	AX39	6.35
74573	AX40	6.42
74574	AX41	6.54
74575	AX42	6.61
74576	AX43	6.79
74604	AX44	6.82
74608	AX45	6.93
74577	AX46	6.97
74579	AX47	7.02
74578	AX48	7.14
74598	AX49	7.18
74581	AX50	7.22
74581	AX51	7.32
74599	AX52	7.42
74551	AX53	7.59
74582	AX54	7.62
74583	AX55	7.65
74600	AX56	7.76
74601	AX57	7.84
74584	AX58	7.91
74552	AX59	8.18
74585	AX60	8.20
74586	AX61	8.23
74587	AX62	8.27
74588	AX63	8.43
74589	AX64	8.47
74602	AX65	8.63
74603	AX66	8.69
74559	AX67	8.94
74590	AX68	9.02
74592	AX69	9.19
74749	AX70	9.39
74757	AX71	9.48
74514	AX72	9.54
74591	AX75	9.61
74593	AX80	10.39
74750	AX82	10.82
74594	AX85	11.16
74595	AX87	11.42
74596	AX90	11.94
74597	AX96	12.71

BX Belts

74650	BX28	6.60
74662	BX30	7.02
74605	BX32	7.29
74666	BX34	7.50
74609	BX35	7.70
74610	BX36	7.93
74611	BX37	8.26
74612	BX38	8.47
74709	BX39	8.60
74613	BX39	8.63

MARS# Desc. Price

BX Belts (con't)

74614	BX40	\$ 8.87
74615	BX41	9.19
74616	BX42	9.24
74617	BX43	9.49
74618	BX44	9.73
74710	BX45	9.86
74619	BX46	10.01
74620	BX48	10.32
74621	BX50	10.62
74607	BX51	10.74
74622	BX52	10.89
74623	BX53	10.97
74624	BX54	11.09
74625	BX55	11.09
74626	BX56	11.27
74629	BX58	11.38
74630	BX59	11.47
74631	BX60	11.55
74627	BX61	11.78
74632	BX62	11.85
74628	BX63	12.07
74633	BX64	12.17
74634	BX65	12.32
74635	BX66	12.47
74636	BX67	12.60
74637	BX68	12.71
74638	BX70	13.05
74639	BX71	13.21
74641	BX72	13.32
74640	BX73	13.61
74646	BX75	13.85
74648	BX76	14.03
74651	BX77	14.25
74655	BX78	14.44
74656	BX79	14.63
74642	BX80	14.87
74643	BX81	14.97
74658	BX82	15.44
74644	BX83	15.62
74652	BX84	15.97
74645	BX85	16.05
74659	BX90	16.55
74661	BX93	17.32
74660	BX95	17.71
74606	BX96	17.82
74681	BX97	18.08
74683	BX99	18.35
74647	BX100	18.40
74649	BX103	18.77
*74653	BX105	16.80
*74654	BX106	16.96
74685	BX108	19.97
74670	BX112	20.04
74686	BX116	21.21
*74668	BX120	19.15
*74669	BX124	19.82
74687	BX128	23.49
74705	BX133	24.63
74748	BX162	30.10
74759	BX173	31.65

MARS# Desc. Price

3VX Belts

74515	3VX315	\$ 6.69
74516	3VX355	7.14
74547	3VX670	11.02
74523	3VX710	11.25
74548	3VX750	11.91
74550	3VX800	13.06
74524	3VX850	13.53
74527	3VX900	14.60

5VX Belts

*74712	5VX450	14.81
*74711	5VX500	19.25
74688	5VX530	20.28
*74713	5VX560	17.89
*74714	5VX570	18.21
*74715	5VX600	19.35
74702	5VX670	25.15
*74716	5VX680	21.94
74703	5VX710	26.70
74689	5VX750	27.79
74708	5VX780	29.95
74704	5VX800	30.13
74690	5VX900	34.12
74691	5VX930	35.86
74706	5VX950	39.53
74692	5VX960	37.67
74693	5VX1000	38.69
74694	5VX1030	39.86
*74718	5VX1050	34.51

MARS# Desc. Price

5VX Belts (con't)

74695	5VX1060	\$ 41.04
74696	5VX1080	41.82
74697	5VX1120	43.41
74698	5VX1150	44.56
74699	5VX1180	45.77
74700	5VX1320	51.26
74701	5VX1400	54.09

5V Belts

74725	5V630	23.59
74726	5V710	26.70
74728	5V750	28.26
74729	5V800	30.13

AP Belts

74746	AP46	7.28
74751	AP51	7.70
74755	AP55	8.05
74756	AP56	8.15
74758	AP58	8.33
74760	AP59	8.41

Miscellaneous Belts

74991	C85	22.30
74990	C100	26.38
74998	C136	36.04
74796	CX96	33.10



Fuses With A Resealable Plastic Pouch

MARS NO.	DESCRIPTION	MARS PACK
08569	3 Amp Standard Size Plastic, 25/pk	1
08570	5 Amp Standard Size Plastic, 25/pk	1
08571	Assorted Fuses, 25/pk	1

Fuses & Fuse Holders

Zebra Instruments offers a 4 pack Medium Duty (15A) standard size plastic fuses and fuse holder. This allows you to replace (or install) fuse protection for transformer outputs (and other devices) in HVAC systems .

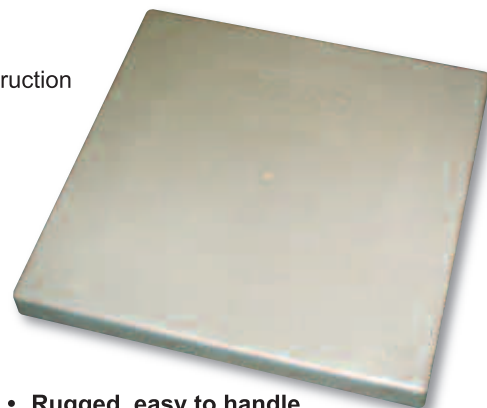
MARS NO.	DESCRIPTION	MARS PACK
08568	4 Kits - Medium duty 15Amp Standard Size Plastic	1



MARS A/C Condenser Pads

Features & Benefits:

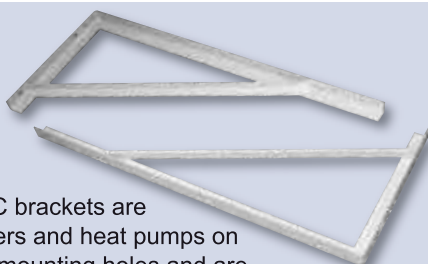
- UV stable – prevents weathering or cracking • Chemical resistant • Solid wall construction
- Will not chip or crack • Lightweight • Textured surface – prevents unit from sliding
- Unique footpads – prevent unit from sinking into ground



- Rugged, easy to handle
- Weed wackers won't destroy the corners
- Two and three inch thick pads are available

MARS No.	Description	Case Qty.	Price	MARS No.	Description	Case Qty.	Price
93560	24" x 24" x 2"	44	\$ 11.29	93575	36" x 48" x 2"	22	\$ 30.52
93561	24" x 36" x 2"	22	16.48	93577	24" x 24" x 3"	16	14.98
93564	30" x 24" x 2"	22	11.08	93578	24" x 36" x 3"	16	18.52
93565	30" x 30" x 2"	22	15.67	93584	30" x 30" x 3"	16	18.26
93567	30" x 40" x 2"	22	25.14	93586	30" x 40" x 3"	16	29.47
93562	32" x 32" x 2"	22	18.63	93587	32" x 32" x 3"	16	23.25
93563	32" x 38" x 2"	22	22.46	93592	36" x 36" x 3"	16	26.72
93572	32" x 44" x 2"	22	22.91	93593	36" x 40" x 3"	16	29.99
93573	36" x 36" x 2"	22	23.97	93594	36" x 48" x 3"	16	38.42
93576	36" x 40" x 2"	22	25.14				

MARS A/C Mounting Brackets



Heavy duty engineered steel A/C brackets are used for mounting A/C condensers and heat pumps on vertical walls. Brackets include mounting holes and are finished in a durable gray powder coat.

MARS No.	Description	MARS Pack	Price
93630	30" Powder Coated Steel Bracket	1 Pair	\$ 16.99
93631	36" Powder Coated Steel Bracket	1 Pair	18.75
93632	42" Powder Coated Steel Bracket	1 Pair	19.99
93636	48" Powder Coated Steel Bracket	1 Pair	22.99

* Load or wall load limitations is restricted by strength of hardware used

MARS A/C Whips

- Assembly UL listed
- Extra long wire for easy hook up
- 8' whips also available
- Bagged individually



See Your MARS Representative For Special Prices

Non-Metallic Fittings

MARS No.	Description	MARS No.
84131	4' x 1/2" x 10 gauge	84132
84133	4' x 3/4" x 8 gauge	84134
84135	6 x 1/2 x 10 gauge	84136
84137	6' x 3/4" x 8 gauge	84138

Metallic Fittings



MARS Disconnect Boxes

- Market leader • High quality box
- UL & CUL • NEMA 3R, rainproof
- Single phase • Pullout type

#1 Best Seller!

MARS No.	Description	MARS Pack	Price
83315	60 amp non fused	6	\$ 7.41
83316	30 amp fused	6	9.69
83317	60 amp fused	6	7.97
83396	30 amp fused	6	7.97



MARS No. 83335
Description:
Generic brand 60 amp non-fused
MARS Pk: 6
678 each

w/GFCI Receptacle

- 60 Amp, non-fused
- Pullout type
- 240 Volt AC, single phase
- Duplex 15 amp GFCI receptacle included
- UL & CUL listed

83308
3164



Compact Disconnect

MARS
32 oz. Spray Bottle



79009 **1⁵⁰** each

MARS
Zoom Spout™ Products



MARS No.	Description	MARS Pack	Case Qty.	Price Each
93240	Zoom Spout® Oiler 4 oz.	12	72	\$.75
93241	Rust Buster 4 oz.	12	72	.75

MARS **Blue Huck Towels**

- Excellent absorbency!
- 5 lb. box
- Lint free
- Prewashed
- Approx. 22" x 13"



79024 **12⁸⁹**

Panseal

Seals and Restores Leaking and Rusted Drain Pans

Panseal is a unique multi-component 2 part epoxy designed to quickly and permanently seal, repair, and restore leaking and corroded drain pans. The product is available in caulk gun cartridges for easy application, gallon size containers for larger surfaces such as cooling towers and patch kits for vertical surfaces. All contain pre-measured amounts of resin and hardener.

- Works in standing water
- Seals leaks immediately
- No surface preparation
- No system down time
- Works on both metal and plastic pans
- 100% solids and entirely free of solvents and volatile organic compounds



MARS No.	Description	Price Ea.
93526	Panseal Cartridge	\$ 24.38
93527	Panseal Gallon	130.36
93528	Panseal Patch	24.90

LA-CO **Products**



MARS No.	Description	Mfg. No.	MARS Pk.	Price
95402	Slic-Tite® paste, 8 oz.	42019	24	\$ 8.29
95410	Low density teflon tape	44072	144	.51
95415	Pipe joint compound, 8 oz.	12219	24	2.76
95420	Pipetite® - 1/2 pt.	12110	24	8.07
95423	Pierce® - 12 oz.	79711	24	4.42
95430	Heat-Seal Stik® 3/8 oz.	11577	12	9.19
95432	Oylite-Stik® 1 oz.	11475	12	7.52
95433	Pipetite-Stik® 1-1/4 oz.	11175	12	.80
95455	Bloc-It® - 10 oz.	11511	24	6.46
95466	Sure-Chek® all temp leak detect., 16 oz.	32850	24	7.45
95480	Valve Action® paint marker-black	96823	12	2.38
95488	Sharpie #15 - black	96023	12	.89
95516	Markal Dura-Ink® #25 Black Marker (2-pk)	96237	1	2.60
95519	Sharpie #15 - Black (3-pk)	96098	1	2.22
95536	Cool Gel® - 32 oz.	11509	12	11.38

Service & Installation

MHS 2012

Caddy® Pyramid Rooftop Support

ST Series

Features:

- Thermoplastic base that is UV stabilized and weatherproof for long lasting
- Fixed-height mounting platform 4" off the roof surface and 10" of usable strut length
- Structurally engineered to support up to 1,000 lbs.
- Hot-dipped galvanized finish
- Superior corrosion protection



MARS No.	Mfg No.	Height	Length (1)	Length (2)	Width	Surface Area	Max. Rec. Load
93955	RPS360400	4"	10"	12.5"	8"	94.3"	1,000 lbs.

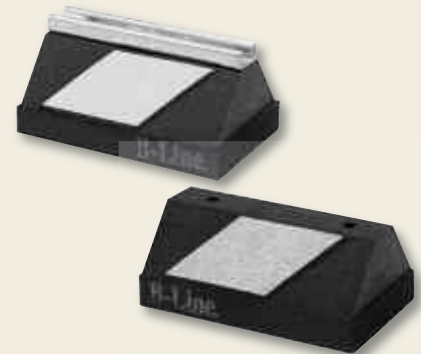
13⁹⁹ each

* Max. recommended load at 10.6 psi roof loading. Contact project or roofing engineer for maximum allowable load on individual project roof system.

Cooper B-Line Rooftop Support Solutions

CC-Series

- Material – 100% recycled rubber, UV resistant
 - Maximum load – 2500 lbs./ft
- C series channel support is designed for superior support of gas and refrigeration piping systems, cable tray, HVAC equipment, walkway systems and many other applications.



MARS No.	B-Line No.	Height	Width	Length	Weight	Price
93951	C10	4.8"	6"	9.6"	5.97 lbs.	\$ 22.25

Economy CX-Series

- Base Only
- Material – 100% recycled rubber, UV resistant
- Maximum load – 1500 lbs/ft

CX Series channel support is designed as an economical support for gas piping systems, cable tray, HVAC equipment and many other applications. Material effectively accepts screw fasteners for securing 1 hole or 2 hole straps (not included).

MARS No.	B-Line No.	Height	Width	Length	Weight	Price
93950	CXP	4"	6"	9.6"	4.86 lbs.	\$ 15.65

MARS H-10 Refrigerant Leak Detectors

The MARS H-10G and the New H-10PM Universal Refrigerant Leak Detectors, detect chlorine or fluorine based refrigerants. They are the first serviceman's leak detectors capable of meeting the "traveling probe" spec.

Contact your MARS Representative for a demonstration!

All of the MARS H-10 Series leak detectors will accurately detect the following refrigerants...	Old	New
	CFC-11	R-134A
	CFC-12	HCFC-123
	CFC-13	HCFC-124
	HCFC-22	HCFC-125
	CFC-113	HCFC-152A
	CFC-114	MP-39
	CFC-115	HP-62
	CFC-500	MP-66
	CFC-502	HP-80
	CFC-503	HP-81
		AZ20
	AZ50	
...as well as many more to come!		

H-10PM Refrigerant Leak Detector

ORDER 6 LOT FOR \$379.95 ea.

25307
395⁰⁰ each



NOTE: Sensors are consumed in normal operation. It is good practice to have a spare sensor available at all times



H-10G Refrigerant Leak Detector

ORDER 6 LOT FOR \$369.94 ea.

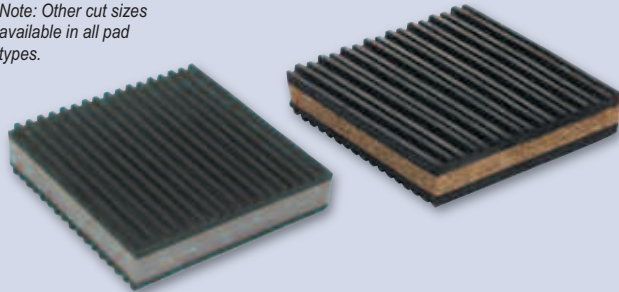
25303
378⁷⁵ each

MARS NO.	MODEL NO.	VOLTAGE	DIMENSIONS	WEIGHT
25307	H-10PM	115V 50/60 Hz.	5.5" D x 10.5" W x 8.5" L	5.9 lbs.
25303	H-10G	115V 50/60 Hz.	2.7" D x 5" W x 8.5" L	3.4 lbs.



Anti-Vibration Pads

Note: Other cut sizes available in all pad types.



- High quality rubber pads
- Provide maximum loading of 60 lbs. per sq. inch
- Use to stop vibration on pumps, motors, a/c units, generators, compressors, etc.
- Plain rubber pads have grooves on each side
- Cork/rubber pads provide the added advantage of reduction in sound level
- Iso-Pads can be easily cut for odd sizes

MARS No.	Description	Price
52101	2" x 2" x 3/8" Rubber	\$.14
52102	3" x 3" x 3/8" Rubber	.17
52103	4" x 4" x 3/8" Rubber	.32
52104	6" x 6" x 3/8" Rubber	.68
52107	18" x 18" x 3/8" Rubber	4.69
52108	2" x 2" x 7/8" Cork/Rubber	.19
52109	3" x 3" x 7/8" Cork/Rubber	.35
52110	4" x 4" x 7/8" Cork/Rubber	.56
52111	6" x 6" x 7/8" Cork/Rubber	1.13
52114	18" x 18" x 7/8" Cork/Rubber	9.14
52115	2" x 2" x 3/4" Iso-Pad	.23
52116	4" x 4" x 3/4" Iso-Pad	.68
52117	18" x 18" x 3/4" Iso-Pad	11.19
52119	2" x 2" x 7/8" Foam/Rubber	.26
52118	4" x 4" x 7/8" Foam/Rubber	.69
52120	6" x 6" x 7/8" Foam/Rubber	1.89
52122	18" x 18" x 7/8" Foam/Rubber	15.95

Oatey PVC Cement



MARS No.	Description	MARS Pk	Price Ea.
73161	4 oz. all purpose cement	24	\$ 2.49
73162	8 oz. all purpose cement	24	4.02
73166	8 oz. heavy duty cement	24	4.31
73170	8 oz. all purpose cleaner	24	3.21
73171	16 oz. all purpose cleaner	24	4.73
73174	4 oz. regular cement	24	2.12
73175	8 oz. regular cement	24	3.17
73176	16 oz. regular cement	24	5.56
73179	8 oz. purple primer	24	3.83

GB Wire Connectors

Gardner Bender



MARS No.	Mfg. No.	Model/Size/Color	Case Qty.	Price
25950	10-001	GB-1 / Gray	100 Box	\$ 2.20
25941	10-002	GB-2 / Blue	100 Box	2.46
25942	10-003	GB-3 / Orange	100 Box	2.90
25943	10-004	GB-4 / Yellow	100 Box	3.36
25944	10-006	GB-6 / Red	100 Box	4.69

Wire Connectors - Jar

25878

Great Truck Stock



MARS No.	Description	MARS Pack	Price
25875	MARS Yellow, 600V, 100/Jar	1	\$ 2.49
25876	MARS Orange, 600V, 100/Jar	1	2.49
25877	MARS Red, 600V, 50/Jar	1	2.49
25878	MARS Winged Blue, 600V, 25/Jar	1	2.49

Wire Connectors

- Attractive merchandiser packaging

MARS No.	Description	Qty.	Price
25880	Gray	100 Box	\$ 1.07
25881	Blue	100 Box	1.20
25882	Orange	100 Box	1.57
25883	Yellow	100 Box	1.96
25884	Red	100 Box	2.98

New Lower Pricing!



Service & Installation

MHS 2012

IDEAL Hose Clamps

- 1/2" band clamps • All stainless steel band & housing
- MARS pack 10

MARS No.	Description	Price
79320	Size 6 (3/8" - 7/8")	\$.60
79323	Size 12 (1/2" - 1-1/4")	.57
79324	Size 16 (3/4" - 1-1/2")	.57
79314*	Size 16 (3/4" - 1-1/2")	.45



IDEAL Micro Gear Hose Clamps

- 5/16" stainless steel band clamp • MARS pk. 10

MARS No.	Description	Price
79330	Size 4 (7/32" - 5/8")	\$.29
79331	Size 6 (5/16" - 7/8")	.29
79334	Size 20 (7/8" - 1-3/4")	.34



* 79314 is 1 part stainless steel

MARS Spray Weld

All-in-one cleaner, primer & cement in a handy aerosol can.

- Valve sprays in any angle, even when can is upside down!
- Commercial grade fast-setting, heavy-bodied, CFC's free aerosol propellant
- 11 oz. can yields up to 300 - 3/4" joints. That's over 100 more joints than a quart can of traditional brush-on cement!
- All-weather formula works Hot or Cold, Wet or Dry
- Sets in 1-2 minutes!
- Pressure test to 100 PSI in as little as 30 minutes!



For use on: SDR 35CL200, Schedules 20, 40 & 80 up to 6" dia.

MARS No.	Description	MARS Pack	Price Ea.
73010	Clear	12	\$ 13.10
73011	Purple	12	13.64

MARS PVC Traps

MARS No.	Description	Price
73126	3/4" White P trap	\$.52
73128	3/4" White Mini P trap	.56
73129	3/4" White Super P trap	.63
73131	3/4" White R trap	.63



MARS Polyethylene Tubing

- FDA approved • Clear tubing • 1/4" O.D.
- 100' Boxed • Excellent for drain/pump applications

79137 **3⁵⁷** each

Clear PVC Tubing

- FDA approved
- Excellent for dehumidifier and ice makers
- Made in the U.S.A.
- Ideal for a/c & refrigeration condensate drains

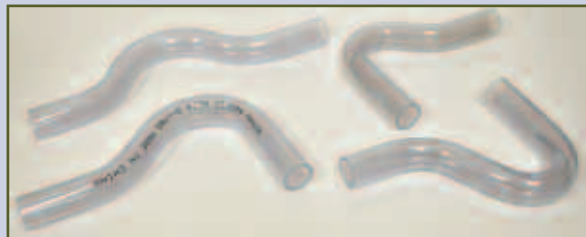
MARS No.	Description	Price
79131	1/4" I.D. 100' boxed	\$ 5.03
79132	3/8" I.D. 100' boxed	6.29
79133	1/2" I.D. 100' boxed	8.92
79134	5/8" I.D. 100' boxed	10.99
79135	3/4" I.D. 100' boxed	15.74
79136	7/8" I.D. 50' boxed	12.07



The Clear Choice!

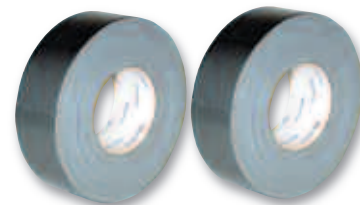
MARS Clear PVC P-Traps for Condensate Drainage

MARS clear PVC drainage P-Traps are made of clear PVC tube with smooth interior walls which makes them the ideal plumbing fixture. They are clear so you can see all the action inside, and find blockages before there is an expensive clog.



MARS No.	Description	Price
73133	3/4" Clear P-trap	\$ 1.11
73134	3/4" Clear mini P-trap	1.11
73135	3/4" Clear super P-trap	1.17
73136	3/4" Clear R-trap	1.11

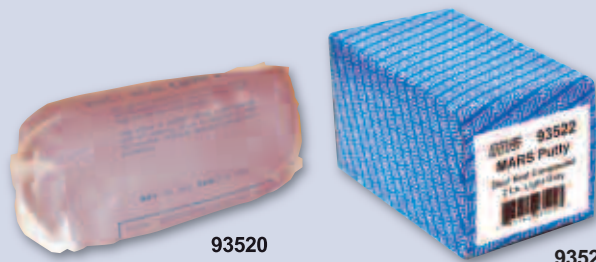
Nashua Duct Tape



MARS No.	Description	Size	MARS Mfg. No.	Pack	Price
79070	Premium	2" x 60 yds.	357S	24	\$ 10.95
79071	Premium	2" x 60 yds.	357B	24	11.95
79074	Industrial	2" x 60 yds.	398S	24	5.89
79075	Industrial	2" x 60 yds.	398B	24	5.89
79081	Aluminum foil	2" x 50 yds.	322S	24	7.67
79083	Foil scrim kraft	2" x 50 yds.	FSK-2	24	10.93
79087	UL181 Foil	2-1/2" x 60 yds.	324A	16	17.45

MARS Putty

MARS Putty is non-hardening, non-toxic and can be shaped by hand to any form, and reused if necessary, for plugging openings through foundations, sealing around electrical boxes, refrigeration tube entry and so much more.



MARS No.	Description	MARS Pack	Case Qty.	Price
93520	1 lb. Slug - Boxed	1	50	\$ 1.29
93521	5 lb. Slug - Boxed	1	10	5.85
93522	2 lb. Slug - Boxed	1	24	2.29

CRC Wasp & Hornet Spray Plus

- Kills wasps, hornets, black widow spiders, fire ants and scorpions
- Fast acting, high strength
- Will not damage plastic connectors and other insulating materials
- Sprays over 20 ft.
- 14 oz. Can
- MARS pack 12

93226 **4.99**



MARS Disposable Gloves

Disposable vinyl, latex, and nitrile gloves are heavy weight 5 mil and powdered. Packaged in a convenient dispenser box.



MARS No.	Description	MARS Pack	Case Qty.	Price
79096	Nitrile Gloves - L 100/box	1	10	\$ 8.67
79097	Nitrile Gloves - XL 100/box	1	10	8.67
79092	Latex Gloves - L 100/box	1	10	7.95
79098	Latex Gloves - XL 100/box	1	10	7.95
79093	Vinyl Gloves - L 100/box	1	10	4.62
79099	Vinyl Gloves - XL 100/box	1	10	4.90
79200	Latex Gloves - L 100/box, Black	1	10	13.95

SCRUBS™ In-A-Bucket

- High absorbent towels (10 1/2" x 12 1/4")



MARS No.	Description	MARS Pack	Price Ea.
93201	Scrubs-in-a-bucket (72 towels)	6	\$ 11.28
93203	Scrubs-in-a-bucket (30 towels)	6	5.99

MARS Shop Towels

- 100% cotton material
- Long lasting
- Machine washable
- All purpose towels



MARS No.	Description	Price
79025	White terry towel (12/bag)	\$ 6.19
79026	Red cloth shop towel (12/bag)	3.19
79027	Red cloth shop towel (50/bag)	11.69

WD-40



MARS No.	Description	Price
79036	8 oz. Smart Straw WD-40	\$ 4.09
79037	11 oz. Smart Straw WD-40	5.19

Service & Installation

MHS 2012

MARS RTV Silicone Sealants

MARS HVAC/R Silicone Sealant is a superior quality silicone which remains flexible from 85° to 500°F. Never dries out. Has excellent adhesion to metals and can be used for virtually every HVAC need.



MARS No.	Description		MARS Pack	Case Qty.	Price
93246	Silicone Sealant Almond	10.1 oz.	12	12	\$ 2.19
93249	Silicone Sealant Clear	10.1 oz.	12	12	3.05
93251	Silicone Sealant White	10.1 oz.	12	12	3.05
93252	Silicone Sealant Gray	10.1 oz.	12	12	3.05
93264	Silicone Sealant Black	10.1 oz.	12	12	2.99
93253	Silicone Sealant Clear	2.8 oz.	12	12	1.99
93254	Silicone Sealant White	2.8 oz.	12	12	1.99

MARS Heat Resistant Silicone

MARS HVAC/R Hi-Temp Red Silicone Sealant is a superior quality silicone which was formulated to perform at temperatures ranging from -85°F to 500°F (-65°C to 260°C) for continuous operation and 600°F (316°C) for intermittent exposure. These features make MARS HVAC/R Hi-Temp red Silicone ideal for use around furnace vent pipes, restaurant hoods and heat exchangers.



MARS No.	Description		MARS Pack	Case Qty.	Price
93255	Hi-Temp. Silicone Red	10.1 oz.	12	12	\$ 4.35
93247	Heat Resistant Silicone Red	2.8 oz.	12	12	3.59

Red Devil Butyl Sealants

Red Devil's butyl sealant is a high performance rubber-like sealant that is ideal for tough outdoor jobs and below grade applications. (marine usage above waterline) It can be used wherever watertight seal is required.



MARS No.	Description		MARS Pack	Case Qty.	Price
93290	Butyl Sealant White	10.1 oz.	12	12	\$ 2.62
93291	Butyl Sealant Aluminum Gray	10.1 oz.	12	12	2.53

Emergency Switch Cover Labels

MARS No.	Description		MARS Pack	Case Qty.	Price
84901	Oil burner switch label; 4" x 2 1/8"	10	1	\$ 2.50	
84902	Gas burner switch label; 4" x 2 1/8"	10	1	2.50	



Permatex® Adhesives & Sealants



MARS No.	Description	MARS Pack	Case Qty.	Price
95555	5 Min Epoxy, .84 fl oz	12	12	\$2.88
95556	30 Min Epoxy, .84 fl oz dual syringe	12	12	2.92
95557	Super Glue Gel tube, 2 grams	12	12	1.68
95558	Super Glue tube, 2 grams	12	12	1.23





250 Rabro Drive East
Hauppauge, New York 11788

PRESORT STANDARD
U.S. POSTAGE
PAID
PERMIT #255
HICKSVILLE, NY



Our mission remains the same...

To provide a single source for quality parts, responsive service and a proven ability to deliver confidence to our customers”.

Our logo and look have changed...

Look for the new MARS... Delivering Confidence message on future invoices, promotions and other MARS communications. Our packaging is also being updated with a fresh new look to call attention to the ever-changing and expanded MARS product offerings to help you grow your business



Rely on MARS to consistently provide the product quality, availability and personal satisfaction to meet your needs and to build confidence in MARS solutions with every interaction.