



SKYACTIV TECHNOLOGY

2013 MAZDA3 SPORT SPECIFICATIONS & FEATURES

PRODUCTION TIMING

Job #1: August 2012

LINEUP

Trim _____
GX
GS-SKY
GT

CONTENTS

PAGE(S)

2013 Mazda3 Sport Model Line-up	2
2013 Mazda3 Sport Key Changes	3
2013 Mazda3 Sport Colour and Trim Guide.....	4
2013 Mazda3 Sport Specifications	5
2013 Mazda3 Sport Equipment and Features.....	7
2013 Mazda3 Sport Equipment Walk	10

* Information contained herein is subject to change without notice

2013 MAZDA3 SPORT MODEL LINE-UP

Trim	Trans	Engine	Description
GX	5MT	2.0L I4	
GX	5AT	2.0L I4	
GX	5MT	2.0L I4	A/C
GX	5MT	2.0L I4	A/C, Convenience Package
GX	5AT	2.0L I4	A/C
GX	5AT	2.0L I4	A/C, Convenience Package
GS-SKY	6MT	2.0L SKY I4	
GS-SKY	6MT	2.0L SKY I4	Moonroof
GS-SKY	6MT	2.0L SKY I4	Moonroof, GS-L
GS-SKY	6MT	2.0L SKY I4	Touring Edition
GS-SKY	6AT	2.0L SKY I4	
GS-SKY	6AT	2.0L SKY I4	Moonroof
GS-SKY	6AT	2.0L SKY I4	Moonroof, GS-L
GS-SKY	6AT	2.0L SKY I4	Touring Edition
GT	6MT	2.5L I4	
GT	5AT	2.5L I4	

Options	Available On
5-speed Sport Mode AT	GX, GT
SKYACTIV-Drive 6-speed Sport mode AT	GS-SKY
Convenience Package *	GX
Moonroof	GS-SKY
GS-L **	GS-SKY
Touring Edition ***	GS-SKY
Crystal White Pearl	All models

* Convenience Package includes: Alloy wheels, Bluetooth hands-free system, Audio profile, 6 speakers, Cruise control & steering wheel cruise controls, Steering wheel mounted audio controls.

** GS-L includes: Fog lights, Leather upholstery, 8-way adjustable power driver seat, leather-like sliding console lid, Leather-like side door trim.

*** Touring Edition includes: Intelligent system with push button ignition system, LED taillights, Dual-zone automatic climate controls, Auto dimming rearview mirror, Premium 10-speaker BOSE audio system, Centerpoint® and Audio Pilot™

2013 MAZDA3 SPORT KEY CHANGES

13MY New Standard Equipment:

- USB audio input
- Alloy wheels with black colour cap previously silver



13MY GS-SKY New Standard Equipment:

- Multi Information Display (MID)
- Trip computer with fuel economy/range, and average speed data

13MY New GS-SKY Touring Edition:

- Intelligent system with push button ignition system
- LED taillights
- Dual-zone automatic climate controls
- Auto dimming rearview mirror
- Premium 10-speaker BOSE audio system
- Centerpoint® and Audio Pilot™



13MY GT New Standard Equipment

- Blind Spot Monitoring System (BSM)
- SIRIUS satellite radio
- Full Screen NAV
- AFS with auto leveling
- Intelligent system with push button ignition system



2013 MAZDA3 SPORT COLOUR AND TRIM GUIDE

Disclaimer

This colour guide has been added to facilitate the ordering process. Although we have made every effort to match the colour and fabric, we cannot guarantee the images below are their exact equivalent.

Exterior Colours	Interior Colour and Trim					
	GX		GS		GT	
	Cloth		Cloth & Leather		Leather	
	Black	Beige	Black	Beige	Black	Beige
Black Mica	■		■		■	
Velocity Red Mica	■		■		■	
Crystal White Pearl	■	■	■	■	■	■
Indigo Lights Mica	■		■		■	
Aluminum Metallic Mica	■		■		■	
Graphite Mica	■		■		■	
Newport Slate Metallic	■		■		■	
Sky Blue Mica	■		■		■	

■ Available

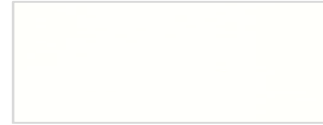
Exterior Colours



Black Mica



Velocity Red Mica



Crystal White Pearl



Indigo Lights Mica



Aluminum Metallic Mica



Graphite Mica



Newport Slate Metallic



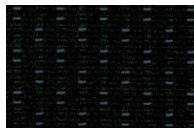
Sky Blue Mica

Interior Colours

Cloth



Black GX



Black GS

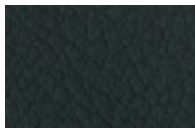


Beige GX

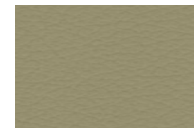


Beige GS

Leather



Black Leather GT



Beige Leather GT

2013 MAZDA3 SPORT SPECIFICATIONS

Engine	<u>GX, GX w/ AC</u>	<u>GS-SKY</u>	<u>GT</u>
Type	2.0L Inline 4-cylinder	SKYACTIV-G 2.0L Inline 4-cylinder	2.5L Inline 4-cylinder
Valve gear	DOHC 16-valve	DOHC 16-valve	DOHC 16-valve
Displacement	1999 cc	1998 cc	2489 cc
Bore and stroke	87.5 x 83.1 mm	83.5 x 91.2 mm	89.0 x 100.0 mm
Compression ratio	10.0 : 1	12.0 : 1	9.7 : 1
Horsepower SAE net	148 @ 6500 RPM	155 @ 6000 RPM	167 @ 6000 RPM
Torque, SAE net lb-ft	135 @ 4500 RPM	148 @ 4100 RPM	168 @ 4000 RPM
Fuel system	Electronic Fuel Injection (EFI)	Electronic Fuel Injection (EFI)	Electronic Fuel Injection (EFI)
Recommended fuel	Regular (Unleaded)	Regular (Unleaded)	Regular (Unleaded)

Drivetrain

Type	Transverse front engine / front-wheel drive
Clutch type	Single Dry Plate with Diaphragm Spring (except AT)
Transmission	5-speed manual (GX) SKYACTIV-MT 6 speed manual transmission (GS-SKY) Optional: SKYACTIV-Drive 6 speed Sport mode AT (GS-SKY) 6-speed manual (GT) Optional: 5-speed Sport mode AT (GX /GT)

	<u>GX, GX w/ AC</u>		<u>GS-SKY</u>		<u>GT</u>	
	<u>5MT</u>	<u>5AT Sport</u>	<u>SKYACTIV-MT 6-spd</u>	<u>SKYACTIV-DRIVE 6-speed Sport AT</u>	<u>6MT</u>	<u>5AT Sport</u>
Transmission						
Gear Ratios: 1st	3.307	3.620	3.363	3.552	3.454	3.620
2nd	1.842	1.925	1.947	2.022	2.059	1.925
3rd	1.310	1.285	1.300	1.452	1.392	1.285
4th	0.970	0.933	0.971	1.000	1.030	0.933
5th	0.755	0.692	0.795	0.708	0.837	0.692
6th	--	--	0.645	0.599	0.717	--
Reverse	3.166	3.405	3.385	3.893	3.198	3.405
Final drive	4.105	3.458	4.105	3.591	4.105	3.652

Electrical System

Type	12 Volt
Battery	75D23L
Alternator	12 Volt - 100 amp
Starter	1.0kW (GX/GS-SKY); 1.4kW (GT)
Ignition system	Distributor Less Ignition

Chassis

Frame	Unit body (monocoque) with side door impact protection beams and triple "H" construction
Front suspension	Independent, strut type, coil springs, stabilizer bar
Rear suspension	Independent, multi-link type, coil springs, stabilizer bar
Shock absorbers	Telescopic-type, double acting
Steering	Rack and pinion with Electro Hydraulic Power Assist Steering
Steering ratio	16.2 : 1
Steering wheel turns	2.94 (lock to lock)
Min. turning circle	10.4m (curb to curb)
Brakes	Power-assisted front and rear disc brakes Anti-lock Braking System w/ Electronic Brake Force Distribution
Wheels	16" steel wheels (GX) 16" alloy wheels (GS-SKY) 17" alloy wheels (GT)

2013 MAZDA3 SPORT SPECIFICATIONS

Chassis (con't)

Tires 205/55R16 all-season tires (GX/GS-SKY)
205/50R17 all-season tires (GT)
Curb Weight 1,312 kg (MT)/ 1,343 kg (AT) - GX models
1,318 kg (MT)/ 1,351 kg (AT) - GS-SKY models
1,387 kg (MT)/ 1,412 kg (AT) - GT models

Capacities

Seating 5
Washer fluid tank 4.0L
Fuel tank 55L (GX/GS-SKY); 60L (GT)
Coolant capacity 7.5L

External Dimensions (mm)

Wheelbase 2,640
Track (fr/rr) 1,535 / 1,520 (GX/GS-SKY), 1,530 / 1,515 (GT)
Overall length 4,505 (all models)
Overall width 1,755
Overall height 1,470
Ground clearance 155

Internal Dimensions

Headroom (fr/rr) 987 mm / 964 mm (w/o moonroof)
967 mm / 957 mm (w/ moonroof)
Legroom (fr/rr) 1,068 mm / 919 mm
Shoulder room (fr/rr) 1,395 mm / 1,371 mm
Passenger volume 2,678L
Trunk room capacity 481L
Total interior
volume 3,159L

Fuel Economy Ratings

	2.0L (GX, GX w/AC)		2.0L GS-SKY		2.5L (GT)	
	5MT	5AT Sport	6MT SKYACTIV	6AT SKYACTIV	6MT	5AT Sport
City	8.1	8.7	7.6	7.1	10.2	9.2
Highway	5.9	6.0	5.1	5.0	6.9	6.7

Performance Data

Top Speed (km/h) 188 (w/ speed limiter) – (GX/GT)
195 (w/ speed limiter) – (GS-SKY)

2013 MAZDA3 SPORT EQUIPMENT AND FEATURES

	<i>GX</i>	<i>GX W/ AC</i>	<i>GS- SKY</i>	<i>GT</i>
ENGINE & TRANSMISSION				
2.0L DOHC 16-valve 4-cylinder engine	S	S	--	--
SKYACTIV-G 2.0L DOHC 16-valve 4-cylinder engine	--	--	S	--
2.5L DOHC 16-valve 4-cylinder engine	--	--	--	S
5-speed manual transmission	S	S	--	--
6-speed manual transmission	--	--	--	S
SKYACTIV-MT 6-speed manual transmission	--	--	S	--
5-speed Sport mode automatic transmission	O	O	--	O
SKYACTIV-Drive 6-speed Sport mode automatic transmission	--	--	O	--
Front wheel drive	S	S	S	S
Traction Control System (TCS)	S	S	S	S
Dynamic Stability Control (DSC)	S	S	S	S
SUSPENSION				
Front: Independent, strut type and coil springs	S	S	S	S
Rear: Independent, multi-link type and coil springs	S	S	S	S
Front and rear stabilizer bars	S	S	S	S
Rack and pinion with variable power assist	S	S	S	S
Power-assisted front and rear disc brakes	S	S	S	S
TIRES & WHEELS				
205/55R16 all-season tires	S	S	S	--
205/50R17 all-season tires	--	--	--	S
16" steel wheels	S	S	--	--
16" alloy wheels	--	CP	S	--
17" alloy wheels	--	--	--	S
Temporary spare tire	S	S	S	S
EXTERIOR FEATURES				
Exterior door handle – body coloured	S	S	S	S
Side sill extensions	--	--	S	S
Black grille with matte finish grille bar	S	S	S	--
Black grille with glossy black finish grille bar	--	--	GS-L	S
Body coloured power door mirrors	S	S	--	--
Body coloured, dual heated, power door mirrors	--	--	S	S
Variable intermittent windshield wipers	S	S	--	--
Rain-sensing intermittent windshield wipers	--	--	S	S
Rear window wiper & washer	S	S	S	S
Rear window defroster	S	S	S	S
Dual sport exhaust garnish	--	--	--	S
2.5L badge	--	--	--	S
Body coloured roof spoiler	S	S	--	--
Body coloured Sport-type roof spoiler	--	--	S	S
Roof Rack mounting hardware	S	S	S	S
Auto light control	--	--	S	S
Adaptive Front Headlights (AFS) with automatic headlamp leveling	--	--	--	S
Sporty fog lights	--	--	GS-L	S
Sporty LED taillights	--	--	TE	S
Halogen headlamps	S	S	S	--

2013 MAZDA3 SPORT EQUIPMENT AND FEATURES

	<i>GX</i>	<i>GX W/ AC</i>	<i>GS- SKY</i>	<i>GT</i>
Bi-Xenon (HID) headlamps with manual leveling	--	--	--	S
Blind spot monitoring system (BSM)	--	--	--	S
INTERIOR FEATURES				
Air conditioning with Micron air filter	--	S	S	S
Mechanical dial type HVAC controls	S	S	S	--
Dual-zone automatic climate controls	--	--	TE	S
Rear heater ducts	S	S	S	S
Exterior temperature gauge	S	S	S	S
Blue light on the temperature gauge in the meterset for low engine temperature	S	S	S	S
Bluetooth® hands-free phone system with Audio Profile®	--	CP	S	S
Steering wheel-mounted cruise control	--	CP	S	S
Tilt steering wheel	S	S	S	S
Telescopic steering wheel	S	S	S	S
Internal fuel door release	S	S	S	S
Power door locks	S	S	S	S
Central locking switch on driver and passenger front doors	S	S	S	S
Speed sensing door locks	S	S	S	S
Power windows w/ driver's one-touch down feature	S	S	S	S
Power window switch illumination (Driver side only)	S	S	S	S
Keyless entry with 2 action unlock feature (2 retractable key fobs)	S	S	S	S
Intelligent key system with push button ignition system	--	--	TE	S
Illuminated entry	S	S	S	S
Trunk/ cargo light	S	S	S	S
Day/night rearview mirror	S	S	S	--
Auto dimming rearview mirror	--	--	TE	S
Driver and passenger sunvisor w/ vanity mirror	S	S	S	S
Map lamps	S	S	S	S
Overhead console with sunglass storage holder	--	--	--	S
Passenger assist grips (3)	S	S	S	S
Coat hooks (2)	S	S	S	S
Driver-side footrest	S	S	S	S
12V power outlet (2)	S	S	S	S
Power glass moonroof with tilt and slide	--	--	O	S
Cloth seats	S	S	S	--
Adjustable heated front seats	--	--	S	S
Leather seats	--	--	GS-L	S
8-way adjustable driver's power seat	--	--	GS-L	S
Reclining front bucket seats w/ thigh support	S	S	S	S
Manual adjustable driver's seat lifter	S	S	S	--
60/40 split fold-down rear seatback w/ lock function	S	S	S	S
Leather-wrapped 3-spoke steering wheel	--	--	S	S
Leather-wrapped shift knob	--	--	S	S
Silver finish on inner door handle	--	--	S	S
Molded cloth door trim	S	S	S	S
Molded leather-like door trim	--	--	GS-L	S
Custom fitted floor mats	S	S	S	S

2013 MAZDA3 SPORT EQUIPMENT AND FEATURES

	<i>GX</i>	<i>GX W/ AC</i>	<i>GS- SKY</i>	<i>GT</i>
Centre console box w/ lid	S	S	S	--
Centre console box w/ sliding lid	--	--	--	S
Soft-feel leather-like sliding console lid	--	--	GS-L	S
Rear center armrest with 2 cup holders	--	--	S	S
Front door storage pockets with bottle holders	S	S	S	S
Rear door bottle holders	S	S	S	S
Illuminated glove compartment	S	S	S	S
Passenger's side seat back pocket	S	S	S	S
Dual front cupholders	S	S	S	S
Ignition key illumination	S	S	S	S
Tachometer	S	S	S	S
Warning lights for oil pressure, check engine, low washer fluid, low fuel level and door ajar	S	S	S	S
Warning lights for airbags	S	S	S	S
Multi Information Display (MID) without colour	--	--	S	S
Full Screen NAVI	--	--	--	S
Trip computer with fuel economy/range, and average speed data	--	--	S	S
AUDIO SYSTEM				
AM/FM CD player with MP3 capability and 4 speakers	S	S	--	--
AM/FM CD player with MP3 capability, 4 speakers and 2 tweeters	--	CP	S	S
Single CD	S	S	S	S
USB and Auxiliary Input	S	S	S	S
Steering wheel-mounted audio controls	--	CP	S	S
Premium 10-speaker Bose audio system with Centerpoint® and Audio Pilot™ Noise Compensation System	--	--	TE	S
SIRIUS satellite radio	--	--	--	S
SAFETY & SECURITY				
Anti-lock brake system (ABS) w/ EBFD	S	S	S	S
Side door impact protection beams	S	S	S	S
Dual front airbags, side airbags and curtain airbags	S	S	S	S
Engine immobilizer theft deterrent system	S	S	S	S
Anti-theft alarm system	S	S	S	S
Front active headrests	S	S	S	S
Adjustable rear seat headrests	S	S	S	S
Adjustable front safety belt anchors	S	S	S	S
Integrated child seat anchor brackets	S	S	S	S
3-point rear safety belts	S	S	S	S
Driver and front passenger safety belt pretensioners and load limiters	S	S	S	S
Child-proof door locks	S	S	S	S
S = Standard O=Optional CP= Convenience Package GS-L= Leather Package TE= Touring Edition				

2013 MAZDA3 SPORT EQUIPMENT WALK

GX	GX w/ Air Conditioning	GS-SKY	GT
Includes: 2.0L engine 148 horsepower 135 lb-ft torque 5-speed transmission ABS with EBF ^D 4-wheel disc brakes Dynamic Stability Control (DSC) Traction Control System (TCS) 16" steel wheels Body coloured door mirrors Body coloured door handles Body coloured roof spoiler Variable intermittent wipers Power door mirrors AM/FM/CD w/ MP3 capability 4 speakers USB and Auxiliary audio input Tilt & telescopic steering Passenger seatback pocket Day/night rearview mirror Power windows w/ driver 1-touch down Power door locks Keyless entry system Jack Knife Key (2) Map lights 12V power outlets (2) Illuminated entry (base) Cloth upholstery 60/40 split rear seatback Front seat console & lid Exterior temperature gauge Illuminated glove compartment Front, side, curtain air bags Front active head restraints Anti-theft alarm	Includes: Air Conditioning 2.0L engine 148 horsepower 135 lb-ft torque 5-speed transmission ABS with EBF ^D 4-wheel disc brakes Dynamic Stability Control (DSC) Traction Control System (TCS) 16" steel wheels Body coloured door mirrors Body coloured door handles Body coloured roof spoiler Variable intermittent wipers Power door mirrors AM/FM/CD w/ MP3 capability 4 speakers Auxiliary audio input Tilt & telescopic steering Passenger seatback pocket Day/night rearview mirror Power windows w/ driver 1-touch down Power door locks Keyless entry system Jack Knife Key (2) Map lights 12V power outlets (2) Illuminated entry (base) Cloth upholstery 60/40 split rear seatback Front seat console & lid Exterior temperature gauge Illuminated glove compartment Front, side, curtain air bags Front active head restraints Anti-theft alarm	Includes GX w/ Air conditioning equip., and Convenience Package plus: SKYACTIV-G 2.0L engine 155 horsepower 148 lb-ft torque SKYACTIV-MT 6-speed manual transmission Single sporty exhaust garnish Side sill extensions Body coloured sporty roof spoiler Rain sensing wipers Automatic headlights (on/off) Heated door mirrors Rear centre armrest w/ 2 cupholders Heated front seats Leather-wrapped steering wheel Leather-wrapped shift knob Illuminated entry (high) Multi Information Display (MID) Trip Computer	Includes GS equipment, Moonroof, GS-L Package, and Touring Edition plus: 2.5L engine 167 horsepower 168 lb-ft torque 6-speed transmission 17" Alloy Wheels Dual sporty exhaust outlets 2.5L badge Full screen NAV Bi-Xenon headlights Blind Spot Monitoring System (BMS) SIRIUS satellite radio AFS w/ auto leveling
	Convenience Package Alloy wheels Bluetooth hands-free phone Audio profile 6 speakers Cruise control & steering wheel cruise controls Steering wheel mounted audio controls	Power Moonroof GS-L Package Fog lights Leather upholstery 8-way adjustable power driver seat Leather-like sliding console lid Vinyl side door trim GS-Touring Edition Intel Key w/ push button start LED tail lights Dual zone auto climate control Auto dimming rearview mirror BOSE® audio Centerpoint® & Audio Pilot® 10 speakers	
5 Speed Sport mode AT	5 Speed Sport mode AT	6 Speed Sport mode AT	5 Speed Sport mode AT