



2014 PRODUCT CATALOG



We've got the quality from Japan

* All products listed on this catalog are made in Japan, unless specified.

CONTENTS

PAGE	ITEM	PAGE	ITEM
	DAYTONA racing products		ATV
3	Steering stabilizers	27 - 28	Carburetor repair kits
3	Fork brackets	29 - 30	Piston kits
4	Steering stabilizer kits	30 - 31	Piston ring sets
4	Steering stabilizer parts	31	Cylinders
5 - 6	Brake master cylinder kits	32	One-way clutch bearing
6 - 7	Clutch master cylinder kits	32	Piston pin bearings
7	Master cylinder parts	33	Engine valves
8	Brake calipers	34	Master cylinder rebuild kits
8	Brake caliper parts	35	Brake caliper rebuild kits
8	Aluminum banjo bolts	36	Brake pad hanger pins
9	Aquaprova digital gauges	37	Brake caliper pistons
10	Digital temp gauges	38	Wheel cylinder rebuild kits
10	Digital tachometer	38	Front fork seals
10	Digital gauge parts	39	Wheel bearing seal kits
11	Multi-function computer		
11	Analog tachometers		
	STREET		GENERAL
12 - 14	Fork oil seals	40	Engine bearings
14	Fork dust/oil seal kit	40	Wheel bearings
15	Lead free wheel weights	40	Watercraft Piston pin bearings
15	Engine valves	41	Aluminum spacers
	DIRT	42	Mikuni carburetor jets
16 - 18	Fork oil seals	43	Keihin carburetor jets
18	Fork dust/oil seal kits	44	Electrical connectors
19	Carburetor repair kits	45	Electrical wires
20 - 21	Master cylinder rebuild kits	45	Accessory power outlet
22	Brake caliper rebuild kits	45	Battery checker
23	Brake pad hanger pins	45	On/off switches
24	Brake caliper pistons	46	Seat cushions
25	Piston kits / Piston ring sets	46	Seat repair stickers
25	Piston pin bearings	46	Acrylic Adhesive sheet
26	Engine valves	47	Tire bead wax
26	Wheel bearing seal kits	47	Exhaust pipe clamps
		47	Exhaust pipe shield
		47	Brake bleeding kit

STABILIZERS (OVAL)

Aluminium steering stabilizers with clear anodized finish, come in a variety of sizes for custom applications. All stabilizers have 7 damping adjustments and are completely rebuildable.



PART #	SIZE	OVERALL	BODY	STROKE
17-002	Short	280 mm	145 mm	70 mm
17-001	Std.	310 mm	163 mm	90 mm
17-003	Long	345 mm	163 mm	90 mm
17-004	X-long	375 mm	194 mm	120 mm

STABILIZERS (ROUND)

Lightweight aluminum round body steering stabilizers with built-in heim joint bracket for custom applications. All stabilizers have 7 damping adjustments and are completely rebuildable.



PART #	SIZE	OVERALL	BODY	STROKE
17-011	Std.	335 mm	174 mm	100 mm
17-013	Long	375 mm	194 mm	120 mm
17-015	X-long	435 mm	224 mm	150 mm
17-014	XX-L	465 mm	240 mm	165 mm

2-PC FORK BRACKETS

For mounting steering stabilizers to fork tubes. Two piece brackets are machined from billet aluminum, and have great advantage for easy installation.



PART #	FORK SIZE	PART #	FORK SIZE
15-501	35 mm	15-508	43 mm
15-502	36 mm	15-512	45 mm
15-504	38 mm	15-513	50 mm
15-505	39 mm	15-509	52 mm
15-506	41 mm	15-510	54 mm

1-PC FORK BRACKETS

For mounting steering stabilizers to fork tubes. Light-weight compact brackets are machined from billet aluminum.



PART #	FORK SIZE	PART #	FORK SIZE
17-501	35 mm	17-508	43 mm
17-502	36 mm	17-509	52 mm
17-504	38 mm		
17-511	40 mm		
17-506	41 mm		

STEERING STABILIZER KITS

Kits are specially designed for each application. Includes an individual length stabilizer and complete bolt-on brackets for easy and secure installation without rivet mounting.



PART #	APPLICATION		MOUNTING PLACE
HARLEY DAVIDSON			
17-151	XL883/1200 Sportster	(88-03)	Left hand side
17-157	XL883/1200 Sportster	(04-06)	Left hand side
17-158*	XL883/1200 Sportster	(07-10)	Left hand side
	* Except 1200 Low and 1200 Custom		
17-154	FXD/I Super Glide	(95-04)	Left hand side
	FXDL/I Low Rider	(93-04)	
	FXDS Conversion	(94-00)	
	FXDX/I Sport	(99-04)	
	FXDXT T-Sport	(01-03)	
17-155	FXDWG/I Wide Glide	(93-04)	Left hand side
17-153	FXST Softail	(84-89)	Right hand side
	FXSTC Softail	(86-99)	
17-156	FXSTB/I Night Train	(00-04)	Right hand side
	FXST/I Softail	(00-04)	
	FXSTD/I Deuce	(00-04)	
17-159	FXD Super Glide	(06-12)	Right hand side

STABILIZER REPAIR KITS

Kits include necessary parts to repair the stabilizers. Available for both oval and round type stabilizers.

* Replacement oil: SAE #5 fork oil



PART #	APPLICATION	PART #	APPLICATION
17-051	for 17-001 (Oval type)	17-053	for 17-011 (Round type)
	17-002	17-052	for 17-014 (Round type)
	17-003		
	17-004		

PART #	APPLICATION		MOUNTING PLACE
HONDA			
17-103	CBR600F Hurricane	(87-90)	Left hand side
17-107	CBR600F2/F3	(91-98)	Inside of fairing
17-115	CBR600F4/F4i	(99-05)	In front of gas tank
17-117	CBR600RR	(03-04)	In front of gas tank
17-118	CBR600RR	(05-06)	In front of gas tank
17-104	NT650 Hawk GT	(88-90)	Left hand side
17-101	VF700F/750F Interceptor	(83-85)	Left hand side
17-108	CBR900RR	(93-97)	Inside of fairing
17-112	CBR900RR	(98-99)	Inside of fairing
17-114	CBR929RR	(00-01)	Inside of fairing
17-116	CBR954RR	(02-03)	Inside of fairing
17-111	VTR1000F Super Hawk	(97-04)	Right hand side
KAWASAKI			
17-201	ZR550B Zephyr	(90-91)	Left hand side
17-202	ZX600A Ninja	(85-87)	Left hand side
17-205	ZR750C Zephyr	(91-92)	Right hand side
17-204	ZX900A Ninja	(84-86)	Left hand side
SUZUKI			
17-310	GSXR600	(01-03)	Inside of fairing
17-309	GSXR750	(00-02)	Inside of fairing
	GSXR1000	(02)	
17-303	GS750S/1000S/1100S	(82-83)	Right hand side
17-304	GSXR1100	(86-88)	Inside of fairing
YAMAHA			
17-403	FZR400	(88-90)	Right hand side
17-410	YZF-R6	(99-02)	Inside of fairing
17-412	YZF-R6	(03-05)	In front of gas tank
17-409	YZF-R1	(98-01)	Inside of fairing
17-411	YZF-R1	(02-03)	Inside of fairing
17-408	VMX12 V-Max	(93-07)	Left hand side

STABILIZER PARTS

Individual replacement parts for both oval and round type steering stabilizers.



PART #	APPLICATION	PART #	APPLICATION
17-00C	Body Clamp (OVAL)	17-002R	Rod etT for 17-002
17-01C	Body Clamp (ROUND)	17-003R	Rod Set for 17-003
17-00B	Male Heim Joint	17-004R	Rod Set for 17-004
17-00H	Female Heim Joint	17-011R	Rod Set for 17-011
17-00K	Adjusting Knob	17-013R	Rod Set for 17-013
17-001R	Rod Set for 17-001	17-015R	Rod Set for 17-015



RADIAL MASTER CYLINDER KITS

The vertically angled body lets the lever flow fluid directly through the master cylinder giving it a sharp response. 19mm piston will fit the ordinary 5/8" diameter piston. 17mm piston will fit the ordinary 14mm. Lever is adjustable to six different positions.

- * For 7/8" diameter handlebars.
- * Use with M10 x P1.25 banjo bolt.

PART #	BODY	LEVER	DESCRIPTION
17-656	Black	Silver	19mm Piston
17-656B	Black	Black	19mm Piston
17-656G	Gold	Silver	19mm Piston
17-656K	Gold	Blak	19mm Piston
17-657B	Black	Black	17mm Piston



BRAKE MASTER CYLINDER KITS

Nissin remote reservoir master cylinder kits have powerful stopping performance. Lever angle is adjustable.

- * For 7/8" diameter handlebars.
- * Use with M10 x P1.25 banjo bolt.

PART #	BODY	LEVER	DESCRIPTION
17-651	Silver	Silver	5/8" Piston
17-651B	Black	Black	5/8" Piston
17-651G	Gold	Black	5/8" Piston
17-652	Silver	Silver	14mm Piston
17-652B	Black	Black	14mm Piston
17-653	Silver	Silver	1/2" Piston
17-653B	Black	Black	1/2" Piston

* 17-653 and 17-653B are short lever type.





RETRO MASTER CYLINDER KITS

Black round reservoir brake master cylinders are classically produced. Provided are three piston sizes and two color combinations. The lever is angled to fit handlebars bent 15 degrees lower from horizontal motorcycle position.

- * For 7/8" diameter handlebars.
- * Use with M10 x P1.25 banjo bolt.
- * Do not use DOT 5 brake fluid.



PART #	BODY	LEVER	DESCRIPTION
17-654A	Black	Silver	5/8" Piston
17-654B	Black	Black	5/8" Piston
17-654D	Black	Silver	14mm Piston
17-654E	Black	Blak	14mm Piston
17-654G	Black	Silver	1/2" Piston
17-654H	Black	Black	1/2" Piston



CLUTCH MASTER CYLINDER KITS

This Nissin master cylinder kits are for hydraulic clutch systems. Lever angle is adjustable.

- * For 7/8" diameter handlebars.
- * Use with M10 x P1.25 banjo bolt.



PART #	BODY	LEVER	DESCRIPTION
17-661	Silver	Silver	5/8" Piston
17-661B	Black	Black	5/8" Piston
17-662	Silver	Silver	14mm Piston
17-662B	Black	Black	14mm Piston



CLUTCH MASTER CYLINDER KITS

The vertically mounted body increases leverage and it makes controllable motion. 19mm piston will fit the ordinary 14mm diameter master cylinder. Lever is adjustable to five different positions.

- * For 7/8" diameter handlebars.
- * Use with M10 x P1.25 banjo bolt.

PART #	BODY	LEVER	DESCRIPTION
17-666G	Gold	Silver	19mm Piston
17-666K	Gold	Black	19mm Piston



REPLACEMENT PARTS

Parts for Nissin brake and clutch master cylinder replacement. Also, Clutch Switch Connector available for Honda CBR11XX and Yamaha V-Max.

[BRAKE]

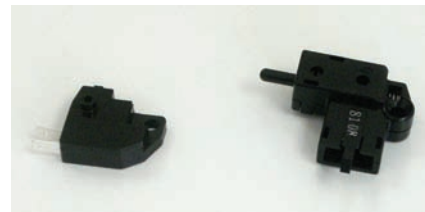
PART #	DESCRIPTION
17-65L	Brake Lever, Silver
17-65LB	Brake Lever, Black
17-65V	Radial B/Lever, Silver
17-65VB	Radial B/Lever, Black
17-651R	Rebuild Kit 5/8"
17-652R	Rebuild Kit 14mm
17-656R	Rebuild Kit 19mm
17-659	Reservoir and Hose
17-65S	L-Bracket for Reservoir
17-65C	Half Bar Clamp, Silver
17-65P	Hose Connector Set

[CLUTCH]

PART #	DESCRIPTION
17-66L	Clutch Lever, Silver
17-66LB	Clutch Lever, Black
17-66V	Radial C/Lever, Silver
17-661R	Rebuild Kit 5/8"
17-662R	Rebuild Kit 14mm
17-669	Reservoir and Hose
17-66S	L-Bracket for Reservoir
17-65C	Half Bar Clamp, Silver



PART #	DESCRIPTION
17-65A	Switch Unit for standard brake master cylinder
17-66A	Switch Unit for standard clutch master cylinder



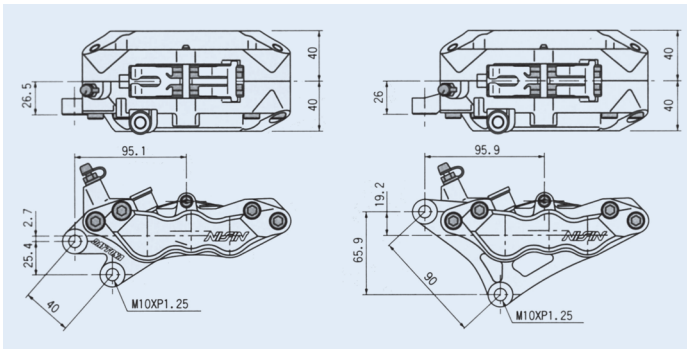
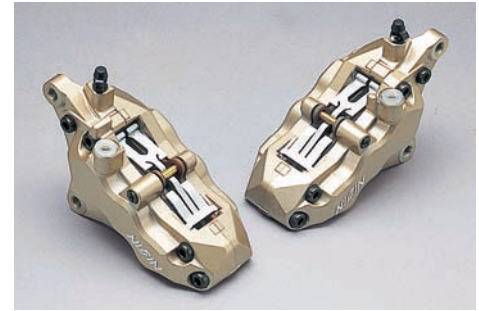
PART #	DESCRIPTION
17-66K	Switch Connector for radial clutch master cylinder (Use for Kawasaki models)
17-66W	Switch Connector for standard clutch master cylinder (Use for Honda CBR11XX and Yamaha V-Max)



6-PISTON BRAKE CALIPERS

Nissin 6-piston calipers feature high performance and great braking control. The calipers fit to 280~320mm diameter of disc rotors.

- * 90mm mounting hole centers fit to :
 - ZX6R(98-99) ZX7R(97-01) ZX9R(97-99)
 - ZX10R(00-01) GSXR600(98-99) GSXR750(88-99)
 - RF900R(94-97) TL1000R(98-01) TL1000S(97-01)
 - GSXR1100(89-99) GSF1200/S(97-00) GSX1300R(99-05)
- * 40mm compact type fit to models that have Brembo calipers as Ducati.
- * The other models can be installed with individual brackets.
- * Banjo bolt size: M10 x P1.25



PART #	PITCH	SIDE
17-671	90mm	Right
17-672	90mm	Left
17-673	40mm	Right
17-674	40mm	Left

CALIPER REPLACEMENT PARTS

Parts for Nissin brake caliper replacement.

PART #	DESCRIPTION
17-67P	Brake Pads
17-67R	Seal Repair Kit



ALUMINUM BANJO BOLTS

Lightweight anodized banjo bolts are machined from billet aluminum for both single and double brake lines. Built-in bleeder type makes easy bleeding for the double lines. Also available with the "Speed Bleeder" installed for the easiest bleeding.

- * Yamaha models are required to use thicker brake banjo or use extra washers.



PART #	LINE	THREAD	APPLICATION
17-619	SINGLE	P1.25	HONDA / KAWASAKI / YAMAHA SUZUKI (Late models)
17-620	SINGLE	P1.00	SUZUKI (Early models)
17-623	DOUBLE	P1.25	HONDA / KAWASAKI / YAMAHA SUZUKI (Late models)
17-624	DOUBLE	P1.00	SUZUKI (Early models)
17-627	DOUBLE	P1.25	HONDA / KAWASAKI / YAMAHA With BLEEDER SUZUKI (Late models)
17-628	DOUBLE	P1.00	SUZUKI (Early models) With BLEEDER
17-631	DOUBLE	P1.25	HONDA / KAWASAKI / YAMAHA With SPEED BLEEDER SUZUKI (Late models)

NEW AQUAPROVA DIGITAL GAUGES



- * Waterproof digital gauges
- * Clear digital letters and simplified design for easier use
- * Large action switches for ease of operation
- * Clock and maximum number memory functions
- * On/off sub-indication display
- * Gauge Body: L 78mm x W 40mm x H 20mm

TEMP GAUGE w/LIGHT

- * LED lighting
- * Indicates 0~180 Celsius (32~356 Fahrenheit)
- * Display refreshes every second
- * Bar Graph display
- * Operates with 12V motorcycle battery



PART #
17-841

3V TEMP GAUGE

- * Indicates 0~180 Celsius (32~356 Fahrenheit)
- * Display refreshes every second
- * Operates with 3V dry cell battery



PART #
17-842

TACHOMETER w/LIGHT

- * LED lighting
- * Indicates 0~19,999 rpm
- * Display refreshes every 0.3 or 0.6 second
- * Bar Graph display
- * Voltage display function
- * Operate with 12V motorcycle battery



PART #
17-846

3V TACHOMETER

- * Indicates 0~19,999 rpm.
- * Display refreshes every 0.3 or 0.6 second
- * Operate with 3V dry cell battery



PART #
17-847

WATER TEMP GAUGE

Compact size digital gauge clearly indicates the actual temperature. Switchable to Fahrenheit or Celsius and has green LED backlighting. Velcro mounting makes instant installation on any flat surface. Fit for most Japanese liquid-cooled models. Sender included in kit. The body size is L 76mm W 36mm H 16mm. The window size is 34mm x 15mm. Sender replacements and sender for special size model available.



KIT #	SENDER #	PLUG SIZE
17-850	17-850S	PT1/8
	17-850T	M10 x P1.25

OIL TEMP GAUGES

This product functions the same as our water temp gauge. It comes with a variety of adapter sizes to fit most models by replacing the stock drain plug. Order by the size of plug threading. Adapter replacements available. The body size is L 76mm W 36mm H 16mm. The window size is 34mm x 15mm.



KIT #	PLUG SIZE	ADAPTER #
17-852	12mm x P1.50	17-852S
17-853	14mm x P1.25	17-853S
17-854	14mm x P1.50	17-854S
17-855	16mm x P1.50	17-855S
17-859	18mm x P1.50	17-859S

DIGITAL TACHOMETER

This compact size tachometer indicates up to 19,990 RPM. Universal to both 2 and 4 strokes, and single to 8 cylinders. It memorizes the highest RPM, and has a clock function. The body size is L 76mm W 36mm H 16mm. The window size is 34mm x 15mm.

* Not fit to point ignition system.



PART #
17-863

DIGITAL GAUGE PARTS

PART #	DESCRIPTION
17-85L	Placing Plate for digital gauge, left hand side
17-85R	Placing Plate for digital gauge, right hand side

PART #	DESCRIPTION
17-85W	Extension Wire for temperature gauge, 2m length

PART #	DESCRIPTION
17-86C	Tachometer Wire connected ignition coil
17-86P	Tachometer Wire wrapping around spark plug cord



MULTI-FUNCTION COMPUTER

This water resistant instrument features many useful functions with handlebar (7/8", 1" and 1-1/4") mount clamp. It works with any motorcycles and ATVs that have their own batteries.

FUNCTIONS

- *Speedometer mile/hour - kilometer/hour
- *Tachometer 0 to 20,000rpm
- *Odometer
- *Dual Trip Meter
- *Clock
- *Maximum Speed Memory
- *Maximum RPM Memory
- *Air and Engine Temperature Gauge
- *Fuel Gauge
- *Oil Changing Notification
- *Low Battery Warning



PART #	LENGTH	WIDTH	DEPTH
17-870	4.7"	1.7"	1.14"

ELECTRIC TACHOMETERS

New tachometers fit most models with 12V battery. They have white dial plates and LED reflection lights with anti-vibration structures. Maximum of 15,000 or 18,000 RPM. Body size excluding rim is 60mm diameter.

(The needle goes under 0 position, when power is off.)

- * Not fit to point ignition system.

PART #	APPLICATION
17-868	15,000 RPM
17-865	18,000 RPM



Provided is hardware used to install tachometer on such places like the handle bar clamp.

PART #
17-86B



FORK OIL SEALS

Replacement fork seals made to meet O.E. specifications for most models. Sold in pairs.



PART #	SIZE	APPLICATION	PART #	SIZE	APPLICATION	PART #	SIZE	APPLICATION
13-037	26x37x10.5	SUZUKI OR50 (79-80) YAMAHA RX50 (83-84)	13-007	33x46x10.5	HONDA CMX250C (85-87) CB360/T (74-76) CJ360T (76-77) CB400A (78) CB400F (75-77) CB400T (78-81) CM400 (79-81) CB450SC (82-86) CB450T (82) CM450 (82-83) CX500 (78-79) CX500C (79-80) CX500D (79-81)	13-011	35x48x11	HONDA VTR250 (88-90) CB500T (75-76) CX500C (81-82) GB500 (89-90) GL500/I (81-82) CB550/F/K (74-78) CB650/C (79-82) CB750A (76-78) CB750C (80-82) CB750F (75-80) CB750K (73-82) CB750L (79) CBX (79-80)
13-003	27x39x10.5	HONDA MB5 (82) CB125S (76-85) KAWASAKI AR50 (82) AR80 (82) KH100 (76-77) YAMAHA YSR50 (87-93) RS100 (75-76)	KAWASAKI KZ305 (81-88) KZ400 (77-79) KZ440 (80-83)	KAWASAKI EX250 (86-87) KZ550H (82-83) ZX550 (84-85)				
13-004	30x40.5x10.5	YAMAHA RD200 (74-76)	SUZUKI GN250 (82-88) GS250T (80-81) GS300L (82-85) GT380 (72-77) GS400/X (77-78) GS425/E/L (79) GS450E (80-83) GS450GA (82-85) GS450L (80-82) GS450S (80-81) GS450T/TX (81-83)	KAWASAKI GN400T (80-82) GS450L (83-88) GT500 (73-77) GS550 (77-79) GS550E (78-80) GS550L (80-82) GS550L (86) GS550M/T (81-82) GT550 (72-77) GR650 (83) GS650E (81-82) GS650G/GL (81-83)				
13-038	30x42x10.5	YAMAHA SR185 (81-82)	YAMAHA XS360 (76-77) XS400 (77-81) XS400S (80-82)	GS750 (77-79) GS750E (78-82) GS750L (80-81) GS750T (82-83) GT750 (72-77) YAMAHA RZ350 (74-85) RD400 (79) XS400 (82-83) XS400R (82-83) SR500 (79-81) XS500 (76-78) XJ550R (81-83) XS650/S (77-83) XS750 (77)				
13-005	31x43x10	HONDA CM185T (78-79) CB200T (75-76) CM200T (80-82) CB250 (91-00) CM250C (82-83) KAWASAKI KZ250 (83) EX305 (83)	13-008	34x46x10.5	KAWASAKI KH250 (76) KH400 (76-78) YAMAHA RD400 (76-78) TX650 (73-76)			
13-006	32x44x11	SUZUKI GN125 (82-97) YAMAHA SR250 (80-82)	13-009	35x46x11/12	HONDA CB450 (68-70) CL450K (69-72) CB750 (69-70)			
13-039	33x45x11	YAMAHA SRX250 (87) XV250 (88-90)	13-011	35x48x11	HARLEY-DAVID. FX-Showa (76-84) FXR-Showa (82-83) XL-Showa (75-83)			

FORK OIL SEALS

PART #	SIZE	APPLICATION	PART #	SIZE	APPLICATION	PART #	SIZE	APPLICATION																
13-012	36x48x8/9.5	KAWASAKI	13-031	37x48x10.5/11.5	HONDA	13-043	38x52x11	KAWASAKI																
		KZ550F (83-84)			GL1000 (75-79)			VN700 (85)																
		KZ550M (83)			YAMAHA			VN750 (86-05)																
		KZ650 (81-83)			XS1100L (80-81)			ZL900 (85-86)																
		KZ700 (84)			13-017			ZL1000 (87)																
		ZN700 (84-85)						HONDA	13-034	39x51x8/10.5	HONDA													
		KZ750E (80-82)						CMX450C (86-87)			VT600C/CD(88-04)													
		KZ750H (80-83)						CX500T (82)			CB700SC (84-86)													
		KZ750K (83-84)						FT500 (82-83)			KAWASAKI													
		KZ750L (83)						VF500C (84-86)			ZR550B (90-91)													
		KZ750M (82)						VF500F (84-86)			W650 (00-01)													
		KZ750R (82)						VT500C (83-84)			YAMAHA													
		YAMAHA						VT500FT (83-84)			FZ700 (87)													
		XV500 (83)						CB550SC (83)			FZ750 (85-88)													
		XJ550 (81-83)						CBR600F (87-90)			13-020	39x52x11	HARLEY-DAVID.											
		FJ600 (84-85)						CB650SC (82)					Showa Fork 39mm											
		FZ600 (86-88)						CX650T (83)					HONDA											
		SRX600 (86)						GL650/I (83)					CB650SC (83-85)											
		YX600 (86-90)						VF700C (84-86)					CX650C (83)											
		XJ650 (80-83)						VF700S (84-85)					VF700C (85-87)											
XJ650L (82)	VFR700F (86)	VF700F (84-85)																						
XJ750/M (82-83)	VFR700F2 (87)	VT700C (84-87)																						
XV750 (81-82)	CB750SC (82-83)	VF750C (88)																						
XS850L/S (80-81)	CB750F (81-82)	VF750F (83-84)																						
XV920 (83)	VF750C (82-83)	VT750C (83)																						
XV920M (83)	VF750S (82-83)	VT800C (88)																						
13-013	36x48x10.5	KAWASAKI	VFR750F (86)	CB900C (81-82)	CB900F (81-82)	CB1000C (83)	CBX (81-82)	CB1100F (83)	GL1100/A/I (80-83)	SUZUKI			VS750 (88-91)	VS800 (92-03)										
		KH500 (76)	CB900C (80-82)	KAWASAKI	EX500 (94-05)	VS700 (86-87)	GS750E (83)	GS750ES (83)	GS750L (79)	13-018			38x50x8/9.5	KAWASAKI										
		KZ650 (77-80)	KAWASAKI	SUZUKI	GZ250 (99-03)	ZX600C (88-97)	ZX750F (87-90)	ZX900A (84-86)	KZ1000J (81-83)					KZ1000K (81-82)	KZ1000M (81-82)	KZ1100 (81-83)	ZN1100 (84-85)	SUZUKI						
		KZ750B (76-79)	SUZUKI	GS550L (83-85)	GS650M (83)	XN85 (83)	GS700E/ES (85)	VS700 (86-87)	GS750E (83)					GS750ES (83)	GS750L (79)	ZX600C (88-97)	ZX750F (87-90)	ZX900A (84-86)	KZ1000J (81-83)	KZ1000K (81-82)	KZ1000M (81-82)	KZ1100 (81-83)	ZN1100 (84-85)	SUZUKI
		KZ750G (80)	SUZUKI	GS650M (83)	XN85 (83)	GS700E/ES (85)	VS700 (86-87)	GS750E (83)	GS750ES (83)					GS750L (79)	ZX600C (88-97)	ZX750F (87-90)	ZX900A (84-86)	KZ1000J (81-83)	KZ1000K (81-82)	KZ1000M (81-82)	KZ1100 (81-83)	ZN1100 (84-85)	SUZUKI	
		KZ900 (76)	SUZUKI	GS700E/ES (85)	VS700 (86-87)	GS750E (83)	GS750ES (83)	GS750L (79)	ZX600C (88-97)					ZX750F (87-90)	ZX900A (84-86)	KZ1000J (81-83)	KZ1000K (81-82)	KZ1000M (81-82)	KZ1100 (81-83)	ZN1100 (84-85)	SUZUKI			
		KZ1000A (77-80)	SUZUKI	VS700 (86-87)	GS750E (83)	GS750ES (83)	GS750L (79)	ZX600C (88-97)	ZX750F (87-90)					ZX900A (84-86)	KZ1000J (81-83)	KZ1000K (81-82)	KZ1000M (81-82)	KZ1100 (81-83)	ZN1100 (84-85)	SUZUKI				
		KZ1000B (77-80)	SUZUKI	GS750E (83)	GS750ES (83)	GS750L (79)	ZX600C (88-97)	ZX750F (87-90)	ZX900A (84-86)					KZ1000J (81-83)	KZ1000K (81-82)	KZ1000M (81-82)	KZ1100 (81-83)	ZN1100 (84-85)	SUZUKI					
		KZ1000D (78-80)	SUZUKI	GS750ES (83)	GS750L (79)	ZX600C (88-97)	ZX750F (87-90)	ZX900A (84-86)	KZ1000J (81-83)		KZ1000K (81-82)	KZ1000M (81-82)		KZ1100 (81-83)	ZN1100 (84-85)	SUZUKI								
		KZ1000G (80)	SUZUKI	GS750L (79)	ZX600C (88-97)	ZX750F (87-90)	ZX900A (84-86)	KZ1000J (81-83)	KZ1000K (81-82)		KZ1000M (81-82)	KZ1100 (81-83)		ZN1100 (84-85)	SUZUKI									
		YAMAHA	YAMAHA	ZX600C (88-97)	ZX750F (87-90)	ZX900A (84-86)	KZ1000J (81-83)	KZ1000K (81-82)	KZ1000M (81-82)		KZ1100 (81-83)	ZN1100 (84-85)		SUZUKI										
		XS1100L (80-81)	YAMAHA	ZX600C (88-97)	ZX750F (87-90)	ZX900A (84-86)	KZ1000J (81-83)	KZ1000K (81-82)	KZ1000M (81-82)		KZ1100 (81-83)	ZN1100 (84-85)		SUZUKI										
		XS1100S (79-81)	YAMAHA	ZX600C (88-97)	ZX750F (87-90)	ZX900A (84-86)	KZ1000J (81-83)	KZ1000K (81-82)	KZ1000M (81-82)		KZ1100 (81-83)	ZN1100 (84-85)		SUZUKI										
13-014	36x48x11	KAWASAKI	YAMAHA	ZX600C (88-97)	ZX750F (87-90)	ZX900A (84-86)	KZ1000J (81-83)	KZ1000K (81-82)	KZ1000M (81-82)		KZ1100 (81-83)	ZN1100 (84-85)		SUZUKI										
		EL250 (88-93)	YAMAHA	ZX600C (88-97)	ZX750F (87-90)	ZX900A (84-86)	KZ1000J (81-83)	KZ1000K (81-82)	KZ1000M (81-82)	KZ1100 (81-83)	ZN1100 (84-85)	SUZUKI												
		EX250 (88-05)	YAMAHA	ZX600C (88-97)	ZX750F (87-90)	ZX900A (84-86)	KZ1000J (81-83)	KZ1000K (81-82)	KZ1000M (81-82)	KZ1100 (81-83)	ZN1100 (84-85)	SUZUKI												
		EN450 (85-90)	YAMAHA	ZX600C (88-97)	ZX750F (87-90)	ZX900A (84-86)	KZ1000J (81-83)	KZ1000K (81-82)	KZ1000M (81-82)	KZ1100 (81-83)	ZN1100 (84-85)	SUZUKI												
		EN500A (90-96)	YAMAHA	ZX600C (88-97)	ZX750F (87-90)	ZX900A (84-86)	KZ1000J (81-83)	KZ1000K (81-82)	KZ1000M (81-82)	KZ1100 (81-83)	ZN1100 (84-85)	SUZUKI												
		EX500 (87-93)	YAMAHA	ZX600C (88-97)	ZX750F (87-90)	ZX900A (84-86)	KZ1000J (81-83)	KZ1000K (81-82)	KZ1000M (81-82)	KZ1100 (81-83)	ZN1100 (84-85)	SUZUKI												
		KZ550A (80-83)	YAMAHA	ZX600C (88-97)	ZX750F (87-90)	ZX900A (84-86)	KZ1000J (81-83)	KZ1000K (81-82)	KZ1000M (81-82)	KZ1100 (81-83)	ZN1100 (84-85)	SUZUKI												
		KZ550C (80-83)	YAMAHA	ZX600C (88-97)	ZX750F (87-90)	ZX900A (84-86)	KZ1000J (81-83)	KZ1000K (81-82)	KZ1000M (81-82)	KZ1100 (81-83)	ZN1100 (84-85)	SUZUKI												
		KZ550D (81)	YAMAHA	ZX600C (88-97)	ZX750F (87-90)	ZX900A (84-86)	KZ1000J (81-83)	KZ1000K (81-82)	KZ1000M (81-82)	KZ1100 (81-83)	ZN1100 (84-85)	SUZUKI												
		KZ550H (82-83)	YAMAHA	ZX600C (88-97)	ZX750F (87-90)	ZX900A (84-86)	KZ1000J (81-83)	KZ1000K (81-82)	KZ1000M (81-82)	KZ1100 (81-83)	ZN1100 (84-85)	SUZUKI												
		KZ750F (83)	YAMAHA	ZX600C (88-97)	ZX750F (87-90)	ZX900A (84-86)	KZ1000J (81-83)	KZ1000K (81-82)	KZ1000M (81-82)	KZ1100 (81-83)	ZN1100 (84-85)	SUZUKI												
		KZ750N (82-83)	YAMAHA	ZX600C (88-97)	ZX750F (87-90)	ZX900A (84-86)	KZ1000J (81-83)	KZ1000K (81-82)	KZ1000M (81-82)	KZ1100 (81-83)	ZN1100 (84-85)	SUZUKI												
		XV535 (87-99)	YAMAHA	ZX600C (88-97)	ZX750F (87-90)	ZX900A (84-86)	KZ1000J (81-83)	KZ1000K (81-82)	KZ1000M (81-82)	KZ1100 (81-83)	ZN1100 (84-85)	SUZUKI												
XJ750R (81-83)	YAMAHA	ZX600C (88-97)	ZX750F (87-90)	ZX900A (84-86)	KZ1000J (81-83)	KZ1000K (81-82)	KZ1000M (81-82)	KZ1100 (81-83)	ZN1100 (84-85)	SUZUKI														
XS750 (78-79)	YAMAHA	ZX600C (88-97)	ZX750F (87-90)	ZX900A (84-86)	KZ1000J (81-83)	KZ1000K (81-82)	KZ1000M (81-82)	KZ1100 (81-83)	ZN1100 (84-85)	SUZUKI														
XS750S (78-79)	YAMAHA	ZX600C (88-97)	ZX750F (87-90)	ZX900A (84-86)	KZ1000J (81-83)	KZ1000K (81-82)	KZ1000M (81-82)	KZ1100 (81-83)	ZN1100 (84-85)	SUZUKI														
XS850 (80-81)	YAMAHA	ZX600C (88-97)	ZX750F (87-90)	ZX900A (84-86)	KZ1000J (81-83)	KZ1000K (81-82)	KZ1000M (81-82)	KZ1100 (81-83)	ZN1100 (84-85)	SUZUKI														
XV920 (82)	YAMAHA	ZX600C (88-97)	ZX750F (87-90)	ZX900A (84-86)	KZ1000J (81-83)	KZ1000K (81-82)	KZ1000M (81-82)	KZ1100 (81-83)	ZN1100 (84-85)	SUZUKI														
XS1100S (79-81)	YAMAHA	ZX600C (88-97)	ZX750F (87-90)	ZX900A (84-86)	KZ1000J (81-83)	KZ1000K (81-82)	KZ1000M (81-82)	KZ1100 (81-83)	ZN1100 (84-85)	SUZUKI														

FORK OIL SEALS

PART # SIZE	APPLICATION
13-022 41x53x8/9.5	HONDA VT750C/CD(98-03)
	KAWASAKI EN500C (96-00) ZR750C (91-92) ZX750K (91-92) ZX750L (93-95) ZX750M (93-94) ZX900B (94-97) ZG1000 (86-98) ZX1000 (88-90) KZ1300 (79-82) ZN1300 (83-87)
	SUZUKI GSF400 (91-93) GSF600 (96-98) SV650 (99-05) GSXR750 (86-87) VX800 (90-93) VZ800 (97-04) GSXR1100 (86-88) GSXR1100 (91-94) GV1200 (85-86) GV1400 (86-89)
	YAMAHA YZF600R (95-05) YZF-R6 (05) XVS65 (98-05) FZ750 (87-88) YZF750R (94-98) FZR1000 (87-88) FZR1000 (91-93) XVS11 (99-04) FJ1100 (84-85) FJ1200 (86-93)

PART # SIZE	APPLICATION
13-047 41x53x8/10.5	KAWASAKI EN500C (01-05) ZX600K/M (03-04) ZX636 (03-04) ZR750 (00-03) ZG1000 (99-05)
	SUZUKI GSF600 (99-05) SV650S (99-05)
	YAMAHA YZF1000R (97) YZF-R1 (98-01)
13-023 41x54x11	BMW Showa Fork 41mm
	BUELL X1 (99-02) S3/S3T (99-00)
	HONDA CB400F (89-90) CB600F (04) CBR600F2 (91-94) CBR600F3 (95-98) NT650 (88-91) CB750 (91-03) VF750C (94-00) VFR750F (90-97) VT750DC (01-03) PC800 (89-98) VFR800 (98-04) CBR1000F (87-96) VF1000F (84) VF1000R (85-86) VTR1000F (98-04) ST1100 (91-02) ST1100ABS(92-95) VF1100C (83-86) VF1100S (83-85) VT1100C (85-04) GL1200/A/I (84-87) VTX1300 (03-05) GL1500/A/I (88-00)

PART # SIZE	APPLICATION
13-023 41x54x11	KAWASAKI ZX600C (90-97) ZX600D (90-93) ZX600E (93-04) ZX600F/G (95-99) ZX636 (05) VN800/A/B (95-05) ZR1000A (03-04) VG1200 (86-03) VN1500 (87-05)
	SUZUKI GSX600F (88-05) GSXR600 (92-93) RF600R (94-96) GSX750F (89-04) GSXR750 (91-93) VL800 (01-05) GSX1100F (88-93) VS1400 (87-04) VL1500 (98-04)
13-025 43x55x10.5	YAMAHA FZS1 (01-03)
13-035 45x57x11	HONDA CBR600RR (03-04) CBR900RR (93-99) ST1300 (03-04) GL1500/A/I (97-01) GL1500C (97-03) GL1800 (01-04) VTX1800 (02-04)
	SUZUKI GSXR600 (97-03)
13-036 46x58x10.5/11.5	KAWASAKI ZX600G (98-99) ZX600J (00-02) ZX900C (98-99) ZX900E (00-01) ZX900F (02-03)
	SUZUKI SV1000/C (03-05)

FORK DUST / OIL SEAL KIT

High quality rubber seals protect from dust and resist oil leakage. Kit includes 2 dust wipers and 2 oil seals.



PART#	OIL SEAL SIZE	APPLICATION
01-109	41x54x11	HONDA VF1000F (84) VF1000R (85-86) VF1100C (83-86) VF1100S (84-85) VT1100C (85-86) GL1200/A/I (84-87) GL1200L (85) GL1200SEI (86)

LEAD FREE WHEEL WEIGHTS



TIN SPOKE WHEEL WEIGHTS

* Sold in pack of 10.

PART #	WEIGHT
16-411	10 grams
16-412	20 grams
16-413	30 grams



STEEL STICK ON WHEEL WEIGHTS

* Sold in pack of 12.

PART #	WEIGHT
16-451	10 grams

ENGINE VALVES

High quality replacement engine valves. Each sold separately.

Suffix A: Intake Valve
 Suffix B: Exhaust valve



PART #	O.E.M. #	APPLICATION	PART #	O.E.M. #	APPLICATION	PART #	O.E.M. #	APPLICATION
HONDA			KAWASAKI			SUZUKI		
14-001A	14711-087-010	C70 (80-83)	14-101A	12004-1006	KZ250 (80-83)	14-202A	12911-47011	GS550 (77-79)
	14711-089-000		14-101B	12005-1005		14-202B	12912-47011	GS550E (78-80)
14-001B	14721-087-010		14-110A	12004-1119	EN450 (85-90)			GS550L (79-82)
	14721-089-000		14-110B	12005-1052	EN500A (90-96)			GS550M (82)
14-003A	14711-107-020	CB125S (73-74)			EN500C (96-01)			GS550T (81)
14-003B	14721-107-020	CL125 (73-74)			EX500 (87-01)			GS650E (81-82)
	14721-324-010				ZL900 (85-86)			GS650G (81-83)
14-008A	14711-415-000	CX500 (78-79)			ZX900A (84-86)			GS650GL (81-83)
14-008B	14721-415-000	CX500C (79-82)			ZG1000 (86-01)			GS650M (83)
		CX500D (79-81)			ZL1000 (87)			XN85 (83)
		GL500/I (81-82)	14-105A	12004-014	KZ750B (76-79)	YAMAHA		
14-010A	14711-426-000	CB650/C (79-82)	14-105B	12005-007	KZ750G (80)	14-301A	5H0-12111-00	SR185 (81-82)
14-010B	14721-426-000	CB650SC (82)			KZ750K (83-84)	14-301B	5H0-12121-00	
14-011A	14711-300-005	CB750A (76-77)			KZ750M (82)	14-302A	3Y1-12111-00	SR250 (80-82)
14-011B	14721-300-005	CB750F (75-76)	14-107A	12004-1010	KZ1000A (77-80)	14-302B	3Y1-12121-00	
		CB750K (69-78)	14-107B	12005-1009	KZ1000B (77-80)	14-310A	50M-12111-00	XV250 (88-99)
					KZ1000D (78-80)	14-310B	50M-12121-01	
					KZ1000E (79-80)			
					KZ1000G (80)			

FORK OIL SEALS

Replacement fork seals made to meet O.E. specifications for most models. Sold in pairs.



PART #	SIZE	APPLICATION
13-001	26x36x10.5	YAMAHA
		DT80 (81-83)
		GT80 (74-80)
		GTMX (73-79)
13-037	26x37x10.5	SUZUKI
		RM50 (78-80)
		RM60 (79-83)
		DS80 (78-00)
		YAMAHA
		YZ50 (80)
		YZ60 (81-83)
		BW80 (86-90)
PW80 (83-03)		
TTR90 (00-05)		
13-002	27x37x7.5	HONDA
		CT90 (69-79)
		CT110 (80-84)
13-003	27x39x10.5	HONDA
		CR60R (83)
		XL70 (74-76)
		XR70R (97-04)
		XL75 (77-79)
		XR75 (73-78)
		XL80S (80-85)
		XR80/R (79-03)
		CRF100F (04-05)
		XL100S (81-85)
		XR100/R (81-02)
		KAWASAKI
		KD80 (75-90)
		KD100 (76-79)
		KM100 (76-81)
		SUZUKI
		TM75 (74-76)
		TS75 (75-77)
		RM80 (77-78)
		RV90 (74-77)
		DS100 (78-81)
		TS100 (78-79)
YAMAHA		
YZ80 (74-78)		
DT100 (77-83)		
MX100 (79-83)		
RT100 (90-00)		

PART #	SIZE	APPLICATION
13-004	30x40.5x10.5	KAWASAKI
		KE100 (76-01)
		KV100 (76)
		SUZUKI
		RM100 (76-77)
		TC100 (73-77)
		RV125 (73-77)
		TC125 (72-77)
		TS125 (73-77)
		DS185 (78)
		TC185 (71-77)
		TS185 (71-78)
		YAMAHA
		DT100 (74-76)
		DT125 (74-76)
		TTR125 (00-05)
		DT175 (74-76)
		TY175 (75-76)
		13-038
CR80R (80-81)		
KAWASAKI		
KX60 (83-03)		
KDX80 (80-88)		
KX80 (79-81)		
KLX110 (02-05)		
KLX125 (03-05)		
SUZUKI		
RM60 (03)		
RM80 (79-85)		
DR100 (83-90)		
TS100 (80-81)		
DRZ110 (03-05)		
DS125 (79-81)		
YAMAHA		
YZ80 (79-82)		
13-005	31x43x10	HONDA
		CR80R (82-83)
		XL125S (80-84)
		XL185S (81-83)
		XR185 (79)
		TR200 (86-87)
		XR200 (80-84)
		KAWASAKI
		KX80 (82)
		KE125 (82-83)

PART #	SIZE	APPLICATION
13-030	31x43x12.5/14.5	HONDA
		XL100 (74-78)
		XL100S (79-80)
		CT125 (77)
		MT125 (74-76)
		XL125 (74-78)
		XL125S (79-80)
		MR175 (75-77)
		XL175 (73-78)
		XL185S (79-80)
		KAWASAKI
		KD125 (75-79)
		KE125 (76-81)
		KX125 (74-76)
YAMAHA		
DT125 (78)		
DT175 (78)		
13-006	32x44x11	KAWASAKI
		KD175 (76-79)
		KE175 (76-78)
		SUZUKI
		TS185 (79-81)
		DS185 (79-80)
		YAMAHA
		YZ100 (78-79)
		DT125 (79-81)
		IT125 (80)
		XT125 (83)
DT175 (79-81)		
MX175 (79-81)		
13-039	33x45x11	KAWASAKI
		KX65 (00-03)
		KX80 (84-85)
		YAMAHA
		YZ80 (83-92)
		BW200 (86-88)
13-007	33x46x10.5	HONDA
		TLR200 (86-87)
		XL200R (83-84)
		KAWASAKI
KX65 (00-05)		
KX80 (83)		
SUZUKI		
RM65 (03-05)		
RM80 (86-88)		

FORK OIL SEALS

PART # SIZE	APPLICATION	PART # SIZE	APPLICATION	PART # SIZE	APPLICATION
13-008 34x46x10.5	KAWASAKI	13-012 36x48x8/9.5	HONDA	13-031 37x48x10.5/11.5	HONDA
	KT250 (75-76)		CR80R (92-95)		CR125R (79-80)
	SUZUKI		KAWASAKI	CR250R (78-80)	
	TS250 (71-76)		KX80 (98-00)	13-017 37x50x11	HONDA
	TS400 (71-77)		KX80T (92-94)		CR80R (96-02)
	YAMAHA		KX85 (01-05)		CR85R (03-05)
	YZ100 (76-77)		KX100 (95-05)		CRF230F (03-04)
	MX125 (76)		SUZUKI		NX250 (88-90)
	YZ125 (76)		RM125 (77-78)		XR250R (81-82)
	DT250 (74-78)		PE175 (78-81)		XL500R (82)
	TY250 (74-77)		RS175 (80-82)		XR500R (81-82)
	YZ250 (74-76)		DR250 (82-85)		SUZUKI
	DT400 (75-78)		DS250 (80)		RM85 (02-05)
13-011 35X48X11	HONDA	PE250 (77-81)	13-018 38x50x8/9.5	YAMAHA	
	CR80R (87-91)	RM250 (76-78)		YZ125 (81-83)	
	CR125M (74-78)	RS250 (80-81)		IT175 (82-83)	
	NX125 (88-90)	TS250 (80-81)		IT250 (81-82)	
	CRF150F (03-05)	DR370 (78-79)		YZ250 (77-80)	
	XR200R (81-83)	SP370 (78-79)		YZ400 (77-79)	
	CR250M (73-76)	DR400 (80)		IT465 (81-82)	
	MR250 (76)	SP400 (80)		YZ465 (80)	
	MT250 (74-76)	PE400 (80-81)		XT550 (82-83)	
	XL250S (80-81)	DR500 (81-83)		13-019 38x50x10	BULTACO
	XL250R (82-87)	SP500 (81-83)	38mm Forks		
	XR250 (79-80)	YAMAHA	CAN-AM		
	XL350 (74-78)	YZ80 (93-01)	38mm Forks		
	XL500S (79-81)	YZ85 (02-05)	HONDA		
	XR500 (79-80)	13-013 36x48x10.5	CR125R (81-83)		
	KAWASAKI		HONDA		KAWASAKI
	KX80 (86-91)		XR200R (84-02)		KX80 (92-97)
	KE175 (80-83)		KAWASAKI		KX125 (80-81)
	KE250 (77-79)		KX125 (78-79)		KDX200 (83-85)
KL250 (78-79)	KDX175 (80-82)		KDX250 (80-84)		
KX400 (75)	KL250 (80-05)		KX250 (79-81)		
SUZUKI	KLX250 (79-80)		KDX400 (79-80)		
RM80 (89-01)	KX250 (76-78)		KDX420 (81)		
RM100 (79-81)	KX400 (76)		KX420 (80-81)		
DR125 (86-88)	YAMAHA	KDX450 (82)			
DR125SE (94-96)	YZ100 (82-83)	KL600 (84-86)			
RM125 (75-76)	YZ125 (77-80)	KL650 (87-05)			
SP125 (86-88)	IT175 (77-81)	SUZUKI			
DR200 (86-88)	TT225 (86-87)	RM125 (79-83)			
DR200SE (96-05)	TTR225 (00-04)	PE175 (82-84)			
SP200 (86-88)	XT225 (93-05)	RM250 (79-82)			
SP250 (82-85)	DT250 (79)	RM400 (79-80)			
TS250 (77-79)	IT250 (77-80)	13-020 39x52x11	HONDA		
YAMAHA	TT250 (80-82)		XL350R (84-85)		
YZ100 (80-81)	XT250 (84)		XL600R (83-87)		
IT125 (81)	TY350 (85-86)				
XT200 (82-83)	XT350 (85-00)				
XT250 (80-83)	IT425 (80)				
	TT500 (76-81)				
	XT500 (76-81)				

FORK OIL SEALS

PART # SIZE	APPLICATION	PART # SIZE	APPLICATION	PART # SIZE	APPLICATION
13-022 41x53x8/9.5	HONDA	13-042 43x54x9.5/10.5	HONDA	13-035 45x57x11	HONDA
	XR250R (86-04)		CR125R (92-93)		CR125R (90-91)
	KAWASAKI	CR250R (92-94)	CR250R (89-91)		
	KX125 (90)	13-025 43x55x10.5	HONDA	CR500R (89-91)	
	KDX200 (93-94)		CR125R (84-86)	HUSQVARNA	
	KX250 (90)		CR250R (82)	Showa Fork 45mm	
	KX500 (90)		CR480R (82)	SUZUKI	
	SUZUKI		KX125 (83-87)	RM125 (91-95)	
	RM125 (90)		KDX200 (86-92)	RM250 (91-95)	
	RM250 (89-90)	KX250 (83-87)	RMX250 (91-98)		
	RMX250 (89-90)	KX500 (83-87)	13-036 46x58x10.5/11.5	HONDA	
	DR650SE (90-95)	SUZUKI		XR650R (00-05)	
	YAMAHA	RM125 (84-87)		KAWASAKI	
	YZ125 (89-90)	RM250 (83-87)		KX125 (89)	
WR200 (91-92)	RM465 (81-82)	KX250 (89)			
YZ250/WR (89-90)	RM500 (83-84)	KX500 (89)			
13-032 41x53x10	HONDA	DR650SE (96-03)		SUZUKI	
	CR250R (81)	YAMAHA		RM125 (89)	
	CR450R (81)	YZ125 (86-87)		RM125 (01-04)	
	KAWASAKI	IT200 (84-86)		RM250 (04-05)	
	KX125 (82)	IT250 (83)		RMZ450 (05)	
	KX250 (82)	TTR250 (00-01)	13-046 49x60x10	KAWASAKI	
YAMAHA	YZ250 (81-87)	KLX400/SR (03)			
XT600 (84-96)	IT490 (83-84)	SUZUKI			
XT600E (90-91)	YZ490 (82-87)	RM125 (96-00)			
13-023 41x54x11	HONDA	TT600 (83-86)		RM250 (96-00)	
	XR250L (91-96)		DRZ400 (00-05)		
	XR350R (83-85)				
	XL600V (89-90)				
	NX650 (88-89)				
YAMAHA					
TT350 (86-87)					

FORK DUST / OIL SEAL KITS

High quality rubber seals protect from dust and resist oil leakage. Kit includes 2 dust wipers and 2 oil seals.



PART#	OIL SEAL SIZE	APPLICATION
01-112	43x54x9.5/10.5	HONDA
		CR125R (92-93)
		CR250R (92-94)
		CR500R (92-94)

PART#	OIL SEAL SIZE	APPLICATION
01-113	43x55x9.5/10.5	HONDA
		CR125R (94-96)
		CR250R (95)
		CR500R (95)
		KAWASAKI
		KX125 (91-95)
		KDX250 (91-94)
		KLX250 (94-96)
		KX250 (91-95)
		KLX300 (97-02)
		KX500 (91-96)
		KLX650/R (93-96)
		YAMAHA
		YZ125 (91-95)
		TTR250 (99-05)
		WR250Z (91-97)
		YZ250 (91-95)
		WR500 (92-93)

CARBURETOR REPAIR KITS

Complete kits to rebuild O.E. carburetors. Each kit contains all necessary parts, such as: jet needles, main and slow jets, float chamber gaskets, and float valves.



PART #	APPLICATION	
HONDA		
03-715	CRF50F	(04-05)
	XR50R	(00-03)
03-726	CRF50F	(06-12)
03-716	CRF70F	(04-05)
	XR70R	(00-03)
03-727	CRF70F	(06-12)
03-701	CR80R	(96-02)
	CR85R	(03-04)
03-717	CRF80F	(04-05)
	XR80R	(00-03)
03-728	CRF80F	(06-12)
03-706	CR85R	(05-07)
03-718	CRF100F	(04-05)
	XR100R	(01-03)
03-729	CRF100F	(06-12)
03-702	CR125R	(00-01)
03-703	CR125R	(02-03)
03-707	CR125R	(04-07)
03-719	CRF150F	(03-05)
03-730	CRF150F	(06-12)
03-731	XR200R	(86-97)
03-732	XR200R	(98-02)
03-720	CRF230F	(03-05)
03-733	CRF230F	(06-12)
03-742	CRF230L	(08-09)
03-704	CR250R	(99-00)
03-705	CR250R	(01-03)
03-708	CR250R	(04-07)
03-709	CRF250R	(04)
03-710	CRF250R	(05)
03-736	CRF250R	(06)
03-711	CRF250R	(07-08)
03-723	CRF250X	(04-06)
03-734	XR250R	(86-95)
03-735	XR250R	(96-04)
03-721	XR400R	(98-04)
03-712	CRF450R	(02-04)
03-713	CRF450R	(05-06)
03-714	CRF450R	(07-08)

PART #	APPLICATION	
03-724	CRF450X	(05-06)
03-725	CRF450X	(07-09)
03-722	XR650R	(00-06)
03-741	XR650L	(93-09)
KAWASAKI		
03-757	KX65	(02-09)
03-751	KX85	(01-07)
03-759	KLX110	(02-05)
03-758	KLX110	(06-09)
03-752	KX125	(01-02)
03-753	KX125	(03-05)
03-793	KLX250S/SF	(09-12)
03-754	KX250	(00-04)
03-755	KX250F	(04-08)
03-756	KX450F	(06-08)
03-791	KLR650	(87-07)
03-792	KLR650	(08-11)
KTM		
03-901	250SX-F	(05-10)
	250XCF-W	(06-10)
	250XC-F	(07-09)
03-902	450EXC	(06-10)
	450SX/SX-F	(06-10)
	450XC/XC-W	(06-10)
	525EXC	(06-07)
	525XC/XC-W	(06-08)
	530EXC	(08-10)
SUZUKI		
03-801	RM85	(02-08)
03-806	DR-Z125/125L	(03-09)
03-802	RM125	(01-06)
03-843	DR200SE	(96-09)
03-803	RM250	(01-06)
03-755	RM-Z250	(05-06)
03-804	RM-Z250	(07-09)
03-844	DR350SE	(94-99)
03-841	DR-Z400S	(00-09)
03-805	RM-Z450	(05-07)
03-842	DR650SE	(96-09)

PART #	APPLICATION	
YAMAHA		
03-866	PW50	(85-06)
03-867	TT-R50	(06-09)
03-873	PW80	(91-06)
03-851	YZ80	(97-01)
03-852	YZ85	(02-05)
03-857	YZ85	(06-08)
03-874	TT-R90	(00-05)
03-876	TT-R90E	(06-07)
03-875	TT-R125	(00-05)
03-868	TT-R125/125L	(06-07)
03-853	YZ125	(99-00)
03-854	YZ125	(02-04)
03-858	YZ125	(05-08)
03-891	TW200	(87-00)
03-892	TW200	(01-11)
03-877	TT-R225	(00-04)
	XT225	(92-00)
03-893	XT225	(01-07)
03-869	TT-R230	(05-09)
03-870	WR250F	(05-09)
03-894	XT250	(08-10)
03-855	YZ250	(00-01)
03-856	YZ250	(02-06)
03-859	YZ250	(07-08)
03-860	YZ250F	(01-02)
03-861	YZ250F	(03-06)
03-862	YZ250F	(07-08)
03-863	YZ426F	(00-02)
03-871	WR450F	(05-06)
03-872	WR450F	(07-09)
03-864	YZ450F	(03-04)
03-865	YZ450F	(05-08)

MASTER CYLINDER REBUILD KITS

Each complete kit includes necessary components to rebuild the brake master cylinders. Made by Nissin, an O.E. manufacturer in Japan.



[FRONT]

PART #	APPLICATION	
HONDA		
06-602	CR80R	(98-99)
	CR125R	(86-99)
	CR250R	(86-99)
	XR250R	(96-99)
	XR350R	(85)
	XR400R	(96-99)
	CR500R	(86-99)
	XR600R	(85)
06-601	CR80R	(00-02)
	CR85R	(03-07)
	CR125R	(00-07)
	CRF150R	(07-08)
	CR250R	(00-07)
	CRF250R	(04-06)
	CRF250X	(04-09)
	XR250R	(00-04)
	XR400R	(00-03)
	CRF450R	(02-06)
	CRF450X	(05-09)
	CR500R	(00-01)
	XR650R	(00-07)
06-603	CRF150F	(03-12)
	CRF230F	(03-12)
06-604	XR250R	(86-95)
	XR600R	(86-00)
06-605	XR650L	(93-12)
KAWASAKI		
06-703	KX80	(88-93)
	KX125	(87-92)
	KDX200	(89-94)
	KDX250	(91-94)
	KX250	(87-92)
	KX500	(88-93)

PART #	APPLICATION	
06-704	KX80	(94-96)
	KX100	(95-96)
	KX125	(94-96)
	KDX200	(95-06)
	KDX220	(98-05)
	KLX250	(94-96)
	KX250	(94-96)
	KLX300	(97-07)
	KX500	(94-96)
06-705	KX80	(97-00)
	KX100	(97-00)
	KX500	(97-03)
06-702	KX85	(01-09)
	KX100	(01-09)
	KX125	(01-05)
	KX250	(01-07)
	KX250F	(06-09)
	KX450F	(06-09)
	KX500	(04)
06-701	KX125	(97-99)
	KX250	(97-99)
06-706	KLR650	(87-07)
06-707	KLR650	(08-11)
SUZUKI		
06-803	RM80	(89-01)
	RM125	(89-95)
	DR-Z250	(01-07)
	RM250	(89-95)
	RMX250	(89-98)
	DR350	(90-99)
06-801	RM85	(05-08)
	RM125	(04-08)
	RM250	(04-08)
	RM-Z250	(07-08)
	RM-Z450	(05-08)
06-802	RM125	(96-03)
	RM250	(96-03)
	DR-Z400/E	(00-07)
06-804	DR200SE	(96-09)
	DR350SE	(90-99)
	DR-Z400S	(00-09)
06-805	DR650SE	(96-09)

PART #	APPLICATION	
YAMAHA		
06-903	YZ80	(86-96)
	YZ125	(86-89)
	RT180	(98)
	TTR225	(99-04)
	YZ250	(86-89)
	YZ250WR	(89)
	YZ490	(86-90)
06-901	YZ80	(01)
	YZ125	(01)
	WR250F	(01)
	YZ250	(01)
	YZ250F	(01)
	WR426F	(01)
	YZ426F	(01)
06-902	YZ85	(02-08)
	YZ125	(02-07)
	TTR230	(05-08)
	WR250F	(02-09)
	YZ250	(02-07)
	YZ250F	(02-06)
	WR426F	(02)
	YZ426F	(02)
	WR450F	(03-09)
	YZ450F	(03-07)
06-904	YZ125	(90-95)
	WR250Z	(91-96)
	YZ250	(90-95)
	YZ250WR	(90)
	WR500Z	(92-93)

MASTER CYLINDER REBUILD KITS

Each complete kit includes necessary components to rebuild the brake master cylinders. Made by Nissin, an O.E. manufacturer in Japan.



[REAR]

PART #	APPLICATION	
HONDA		
06-651	CR80R	(92-02)
	CR85R	(03-07)
	CR125R	(87-01)
	CR250R	(87-01)
	XR250R	(90-95)
	XR400R	(96-03)
	CR500R	(87-01)
	XR600R	(91-00)
	XR650L	(93-09)
	XR650R	(00-07)
06-652	CR125R	(02-07)
	CR250R	(02-07)
	CRF250R	(04-09)
	CRF250X	(04-09)
	CRF450R	(02-09)
	CRF450X	(05-09)
06-653	XR250R	(96-04)
KAWASAKI		
06-751	KX65	(00-09)
	KX80	(88-00)
	KX85	(01-09)
	KX100	(95-09)
	KX125	(86-90)
	KX125	(94-05)
	KLX140	(08-09)
	KDX200	(89-06)
	KDX220	(98-05)
	KL250	(00-03)
	KX250	(86-90)
	KX250	(94-07)
	KX250F	(04-09)
	KLX300	(97-07)
	KX450F	(06-09)
	KX500	(86-90)
	KX500	(94-04)
	KLX650	(93-96)

PART #	APPLICATION	
06-752	KX125	(91-93)
	KDX250	(91-94)
	KLX250	(94-96)
	KX250	(91-93)
	KX500	(91-93)
06-753	KLR650	(87-07)
06-754	KLR650	(08-11)
SUZUKI		
06-651	RM80	(91-01)
Merged	RM85	(02-08)
from 06-851	RM125	(96-08)
	DR250	(90-95)
	RM250	(96-08)
	DR350	(90-99)
	DR350SE	(90-99)
	DR-Z400/E	(00-07)
	DR-Z400S	(00-09)
	DR650SE	(96-09)
06-752	RM125	(93-95)
Merged	DR-Z250	(01-07)
from 06-852	RM250	(93-95)
	RMX250	(89-98)

PART #	APPLICATION	
YAMAHA		
06-951	YZ80	(93-01)
	YZ85	(02-08)
	YZ125	(88-95)
	WR250Z	(91-96)
	YZ250	(88-95)
	YZ250WR	(89-90)
	WR500Z	(92-93)
06-952	YZ125	(96-02)
	YZ250	(96-02)
	WR250F	(01-02)
	WR250Z	(97)
	YZ250F	(01-02)
	WR400F	(00)
	WR426F	(01-02)
	YZ426F	(00-02)
06-953	YZ125	(03-08)
	YZ250	(03-08)
	WR250F	(03-09)
	YZ250F	(03-09)
	WR450F	(03-09)
	YZ450F	(03-09)

BRAKE CALIPER REBUILD KITS

Each kit includes all necessary rubber components and pad hanger pins if it's applicable. Made by Nissin, an O.E. manufacturer in Japan.



[FRONT]

PART #	APPLICATION
HONDA	
08-101	CR80R (93-02) CR85R (03-07) CRF150R (07-09)
08-102	CR125R (87-07) CRF150F (06-12) CRF230F (03-12) CR250R (87-07) CRF250R/X (04-09) XR250R (93-04) CRF450R/X (03-09) CR500R (87-01) XR650L (93-09)
KAWASAKI	
08-203	KX125 (89-93) KX250 (89-93) KX500 (89-93)
08-201	KX125 (94-96) KX125 (01-05) KX250 (94-96) KX250 (01-07) KX250F (04-09) KX450F (06-10) KX500 (94-04)
08-202	KX125 (97-00) KX250 (97-00)
08-205	KLR650 (08-11)
SUZUKI	
08-203	RM125 (87-95) RM250 (87-95)
08-301	RM125 (96-07) RM250 (96-08) RM-Z250 (07-09) DR350SE (98-99) RM-Z450 (05-09) DR-Z400S (00-09) DR650SE (96-09)
08-201	RM-Z250 (04-06)

PART #	APPLICATION
YAMAHA	
08-203	YZ125 (90-97) YZ250 (90-97)
08-102	YZ125 (98-07)
Merged from 08-401	WR250F (01-09) YZ250 (98-07) YZ250F (01-06) WR400F (98-00) YZ400F (99) WR426F (01-02) YZ426F (00-02) WR450F (03-09) YZ450F (03-07)
08-402	YZ125 (08-09) YZ250 (08-09) YZ250F (07-09) YZ450F (08-09)

PART #	APPLICATION
KAWASAKI	
08-253	KX125 (89-93) KX250 (89-93) KX500 (89-93)
08-251	KX125 (95-05) KLX250S (06-12) KX250 (95-07) KX500 (96-04)
08-252	KX250F (04-09) KX450F (06-10)
08-255	KLR650 (08-11)
SUZUKI	
08-351	RM125/250 (92) RM125/250 (96-04) DR-Z400S (00-09)
08-352	RM125 (05-07) RM250 (05-08)
08-252	RM-Z250 (04-06)
08-353	RM-Z250 (07) RM-Z450 (05-07)
08-354	DR650SE (96-09)
YAMAHA	
08-253	YZ125 (90-97) YZ250 (90-97)
08-451	YZ125 (98-02) YZ250 (98-02) YZ250F (01-02) YZ400F (99) YZ426F (00-02)
08-452	YZ125 (03-09) YZ250 (03-09) YZ250F (03-09) YZ450F (03-09)
08-453	WR250F (05-09) WR450F (05-09)

[REAR]

PART #	APPLICATION
HONDA	
08-151	CR80R (92-02) CR85R (03-07) CR125R (90-01) CR250R (90-01) CR500R (90-01)
08-152	CR125R (02-07) CRF150R (07-09) CR250R (02-07) CRF250R/X (04-09) CRF450R/X (03-09)
08-153	CRF230L (08-09) XR250R (93-04) XR650L (93-09)

BRAKE PAD HANGER PINS

These include required quantities of brake pad hanger pins. Made by Nissin, the O.E. manufacturer in Japan.



[FRONT]

PART #	QTY	APPLICATION
08-052	1	HONDA
		CR125R (87-07)
		CRF230F (03-09)
		CR250R (87-07)
		CRF250R/X (04-09)
		CRF450R/X (03-09)
		CR500R (87-01)
		KAWASAKI
		KX125 (94-05)
		KX250 (94-07)
		KX250F (04-09)
		KX450F (06-10)
		KX500 (94-04)
		SUZUKI
		RM125 (96-07)
		RM250 (96-08)
		RMZ250 (04-09)
		RMZ450 (05-09)
		YAMAHA
		YZ125 (98-09)
		WR250F (01-09)
		YZ250 (98-09)
		YZ250F (01-09)
		WR400F (98-00)
		YZ400F (99)
		WR426F (01-02)
		YZ426F (00-02)
		WR450F (03-09)
		YZ450F (03-09)
08-054	2	HONDA
		CR80R (93-02)
		CR85R (03-07)
		CRF150R (07-09)

[REAR]

PART #	QTY	APPLICATION
08-056	1	HONDA
		CR80R (92-02)
		CR85R (03-07)
		CR125R (90-01)
		CR250R (90-01)
		CR500R (90-01)
		KAWASAKI
		KX125 (95-05)
		KX250 (95-07)
		KX250F (04-09)
		KX450F (06-10)
		KX500 (96-04)
		SUZUKI
		RM125/250 (92)
		RM125/250 (96-04)
		RMZ250 (04-07)
		RMZ450 (05-07)
		YAMAHA
		YZ125 (98-09)
		YZ250 (98-09)
		YZ250F (01-09)
		YZ400F (99)
		YZ426F (00-02)
		YZ450F (03-09)
08-057	1	HONDA
		CR125R (02-07)
		CRF150R (07-09)
		CR250R (02-07)
		CRF250R/X (04-09)
		CRF450R/X (03-09)
		SUZUKI
		RM125 (05-07)
		RM250 (05-08)
		RMZ250 (08-09)
		RMZ450 (08-09)

NEW BRAKE CALIPER PISTONS

Pistons for replacing brake caliper. Includes required quantities. Made by Nissin, the O.E. manufacturer in Japan.



[FRONT]

PART #	QTY	APPLICATION
08-911	1	HONDA
		CR80R (86-02)
		CR85R (03-07)
		CR150R (07-09)
08-912	2	HONDA
		CR125R (87-07)
		CRF230F (03-09)
		CR250R (87-07)
		CRF250R/X (04-09)
		CRF450R/X (03-09)
		CR500R (87-01)
		KAWASAKI
		KX125 (94-96, 01-05)
		KX250 (94-96, 01-07)
		KX250F (04-09)
		KX450F (06-10)
		KX500 (94-04)
		YAMAHA
		YZ125 (01-07)
		YZ250 (01-07)
		YZ250F (01-06)
		WR426F (01-02)
		YZ426F (01-02)
		WR450F (03-09)
		YZ450F (03-07)
08-913	2	KAWASAKI
		KX125 (89-93)
		KX250 (89-93)
		KX500 (89-93)
		SUZUKI
		RM125 (87-08)
		RM250 (87-08)
		RM-Z250 (07-09)
		RM-Z450 (05-09)
		YAMAHA
		YZ125 (93-95)
		YZ250 (93-95)

PART #	QTY	APPLICATION
08-915	2	KAWASAKI
		KX125 (97-00)
		KX250 (97-00)
08-916	2	YAMAHA
		YZ125 (08-09)
		YZ250 (08-09)
		YZ250F (07-09)
		YZ450F (08-09)

PART #	QTY	APPLICATION
08-933	1	KAWASAKI
		KX125 (89-93)
		KX250 (89-93)
		KX500 (89-93)
		SUZUKI
		RM125 (93-95)
		RM250 (93-95)
08-934	1	KAWASAKI
		KX125 (94-05)
		KX250 (94-07)
		KX500 (94-04)
		SUZUKI
		RM125 (92, 96-07)
		RM250 (92, 96-08)
		YAMAHA
		YZ125 (98)
		YZ250 (98)
08-935	1	KAWASAKI

[REAR]

PART #	QTY	APPLICATION
08-931	1	HONDA
		CR80R (92-02)
		CR85R (03-07)
		CR125R (87-01)
		CR250R (87-01)
		CR500R (87-01)
08-932	1	HONDA
		CR125R (02-07)
		CRF150R (07-09)
		CR250R (02-07)
		CRF250R/X (04-09)
		CRF450R/X (03-09)

		KX250F (04-09)
		KX450F (06-10)
		SUZUKI
		RM-Z250 (07-09)
		RM-Z450 (05-09)
		YAMAHA
		YZ125 (03-09)
		YZ250 (03-09)
		YZ250F (03-09)
		YZ450F (03-09)
08-937	1	YAMAHA
		YZ80 (93-01)
		YZ85 (02-09)
08-938	1	YAMAHA
		YZ125 (90-97)
		YZ250 (90-97)

PISTON KITS

APPLICATION		STD	0.50	1.00	1.50
HONDA					
CRF230F	(03-14)	05-101	05-103	05-105	05-107
CRF230L	(08-09)				

High quality replacement piston kits properly meet O.E.M. specifications. Kit includes piston, ring set, wrist pin and circlips.



PISTON RING SETS

APPLICATION		STD	0.50	1.00	1.50
HONDA					
CRF230F	(03-14)	05-601	05-603	05-605	05-607
CRF230L	(08-09)				

PISTON PIN BEARINGS

Top quality needle roller cages come in a variety of sizes.



PART #	SIZE (mm)	O.E.M. #	APPLICATION
HONDA			
10-054	14x18x16	91102-GC4-601	CR80R (86-02) CR85R (03-07)
10-051	14x18x19	91008-KA3-761	CR125R (79-87)
10-053	15x19x17	31103-KV3-771	CR125R (88-07)
10-001	18x22x22	91015-357-003 91015-KZ3-003	CR250R (78-07)
KAWASAKI			
10-252	14x18x17.5	13033-1053 13033-1060	KDX80 (80-88) KX80 (78-00) KX85 (01-09) KX100 (95-09)
10-152	15x19x20	13033-1057	KX125 (94-05)
10-251	16x21x19.5	13033-1051	KX125 (78-93) KDX175 (82) KDX200/220 (83-05)
10-201	18x22x24	13033-1010	KDX250 (80-84) KDX250 (91-94) KX250 (74-07)

PART #	SIZE (mm)	O.E.M. #	APPLICATION
KTM			
10-152	15x19x20	51030034000	125E/XC (93-03) 125SX (93-08) 144SX (07-08)
SUZUKI			
10-054	14x18x16	09263-14016	RM80 (83-01) RM85 (02-08)
10-152	15x19x20	09263-15040	RM125 (88-08)
10-101	18x23x24	09263-18025	DS250 (80) TS250 (74-81)
10-351	18x23x22	09263-18016	PE250 (77-81) RM250 (82-08) RMX250 (89-98) RS250 (80-81) RM465 (81-82) RM500 (83-84)
YAMAHA			
10-353	14x18x16.5	93310-21403-00 93310-21417-00	YZ80 (93-01) YZ85 (02-08)
10-354	15x20x18	93310-315S4-00	YZ125 (97-00)
10-053	15x19x17	93310-21510-00	YZ125 (01-08)
10-352	16x20x19.5	93310-216L2-00	YZ100 (76-83) DT125 (78-81) IT125 (80-81) YT125 (80-85) YZ125 (74-96)
10-301	16x21x23	93310-316H6-00	IT200 (84-86)
10-001	18x22x22	93310-218A6-00	YZ250 (99-08)
10-351	18x23x22	93310-418E9-00	IT250 (83) WR250Z (91-97) YZ250 (82-98) YZ250WR (89-90) IT425 (80) IT465 (81-82) IT490 (83-84) YZ490 (82-90) WR500 (92-94)

ENGINE VALVES

High quality replacement engine valves. Each sold separately.

Suffix A: Intake Valve
 Suffix B: Exhaust Valve



PART #	O.E.M. #	APPLICATION
HONDA		
14-001A	14711-087-010	CT70 (70-81)
	14711-089-000	XL70 (74-76)
14-001B	14721-087-010	
	14721-089-000	
14-023A	14711-GN5-912	XR70R (97-02)
14-023B	14721-GF6-010	
14-002A	14711-028-000	CT90 (66-79)
	14711-943-801	ST90 (73-75)
14-002B	14721-028-790	
	14721-943-801	
14-003A	14711-107-020	XL100 (76-78)
14-003B	14721-107-020	CT125 (77)
	14721-324-010	
14-004A	14711-437-000	XL125S (79-84)
	14711-440-003	XL185S (79-83)
14-004B	14721-437-000	XR185 (79)
		XL200R (83-84)
		XR200 (80-84)
		XR200R (81-83)
		XR200R (86-02)

PART #	O.E.M. #	APPLICATION
14-015A	14711-HB3-000	TR200 (86-87)
	14711-HB3-770	
14-015B	14721-HB3-000	
14-025A	14711-KCY-670	XR400R (96-04)
14-025B	14721-KCY-670	

KAWASAKI

14-101A	12004-1006	KL250 (80-84)
14-101B	12005-1005	KLX250 (79-80)
14-110A	12004-1119	KL250 (85-05)
14-110B	12005-1052	

YAMAHA

14-301A	5H0-12111-00	BW200 (85-88)
14-301B	5H0-12121-00	TW200 (87-01)
		XT200 (82-83)
		TT225 (86-87)
		XT225 (93-01)
14-302A	3Y1-12111-00	TT250 (80-82)
14-302B	3Y1-12121-00	XT250 (80-83)
		BW350 (87-88)
14-305A	5Y1-12111-00	XT550 (82-83)
14-305B	5Y1-12121-00	

WHEEL BEARING SEAL KITS

Top quality ball bearings and seals offer greater performance and protection against mud, sand and water. Sold in complete kit of bearings and seals for one axle.



[FRONT]

PART #	APPLICATION
HONDA	
11-003	CR125R (95-06)
	CR250R (95-06)
	CRF450R (02-06)
	CR500R (95-01)
KAWASAKI	
11-021	KX125 (93-05)
	KX250 (93-06)
	KX250F (02-04)
	KX500 (94-04)
SUZUKI	
11-041	RM125 (96-00)
	RM250 (96-00)
	DRZ400 (00-06)

[REAR]

PART #	APPLICATION	PART #	APPLICATION
HONDA		11-122	KX125 (97-02)
11-103	CR125R (90-99)		KX250 (97-02)
	CR250R (90-99)		KX500 (97-04)
	CR500R (90-01)	SUZUKI	
KAWASAKI		11-141	RM125 (95-99)
11-121	KX125 (86-96)		RM250 (95-99)
	KDX200 (89-06)	YAMAHA	
	KDX220 (97-06)	11-161	YZ125 (88-06)
	KLX250 (95-96)		WR250 (91-97)
	KX250 (86-96)		YZ250 (88-98)
	KLX300 (97-06)		WR400F (98)
	KX500 (86-96)		YZ400F (98)
			WR500 (92-93)

CARBURETOR REPAIR KITS

Complete kits to rebuild O.E. carburetors. Each kit contains all necessary parts, such as: jet needles, main and slow jets, float chamber gaskets, and float valves.



PART #	APPLICATION
ARCTIC CAT	
03-451	2x4 90/DVX (08-10)
03-452	2x4 250 (02-05)
	4x4 250 (02-05)
03-453	2x4 250/DVX (06-07)
03-454	2x4 300 (01-03)
	4x4 300 (01-05)
03-455	2x4 400/Auto (04)
	4x4 400/Auto (04-06)
03-456	T2x4 400 DVX (06-08)
03-457	4x4 500/Auto (05-07)
03-458	4x4 650 H1 (05-06)
BOMBARDIER	
03-471	Rally 200 (05-07)
03-472	Outlander 400 (03-07)
03-473	Quest 500 (02-04)
03-474	Traxter 500 5-speed (05)
	Traxter 500 Auto (02-04)
	Traxter 500 MAX (03-04)
	Traxter 500 XL (04)
	Traxter 500 XT (01-05)
03-475	DS650 (02-07)
HONDA	
03-001	ATC70 (78-82)
03-035	TRX70 (86-87)
03-002	ATC90 (72-78)
03-041	TRX90 (93-98)
03-047	TRX90 (99-05)
03-056	TRX90EX (07-08)
	TRX90X (09,12)
03-003	ATC110 (79-83)
03-024	ATC110 (84-85)
03-025	ATC125M (84-85)
03-004	TRX125 (85-86)
03-005	TRX125 (87-88)
03-006	ATC185/S (80-82)
	ATC200 (81-82)

PART #	APPLICATION
03-026	ATC185S (83)
	ATC200 (83)
03-027	ATC200E (82-83)
	ATC200M (84-85)
	ATC200ES (84)
03-007	ATC200S (84-86)
03-008	ATC200X (83-85)
03-009	ATC200X (86-87)
03-036	TRX200 (84)
03-032	TRX200 (90-91)
	TRX200D (91)
03-033	TRX200D (92-93)
03-034	TRX200D (94-96)
03-057	TRX200SX (86)
03-010	TRX200SX (87-88)
03-015	ATC250ES/SX (85)
03-028	ATC250ES/SX (86-87)
03-012	ATC250R (81-82)
03-013	ATC250R (83-84)
03-014	ATC250R (85)
03-016	TRX250 (85)
03-017	TRX250 (86-87)
03-042	TRX250/ES (97-02)
	TRX250EX (01-05)
	TRX250TE/TM (02-05)
03-052	TRX250EX (06-08)
	TRX250X (09)
03-051	TRX250TE/TM (06-09)
03-018	TRX250R (86-87)
03-019	TRX250R (88)
03-020	TRX250X (87-88/91-92)
03-021	TRX300/FW (88-90)
03-029	TRX300/FW (91-92)
03-031	TRX300/FW (93-00)
03-038	TRX300EX (93-08)
03-022	ATC350X (85)
03-023	TRX350 (86-87)
	TRX350D (87-88)

PART #	APPLICATION
03-039	TRX350 (00-03)
03-053	TRX350 (04-06)
03-044	TRX400EX (99-04)
03-054	TRX400EX (05-08)
03-045	TRX400FA/FGA (04-07)
03-037	TRX400FW (95-03)
03-040	TRX450ES/S (98-04)
03-049	TRX450R (04-05)
03-050	TRX450R/ER (06-09)
03-048	TRX500 [475cc] (05-09)
03-043	TRX500FA/FGA (01-04)
03-055	TRX500FA/FGA (05-09)
03-046	TRX650FA/FGA (03-05)

KAWASAKI	
03-222	KSF50 (03-06)
03-114	KSF80 (03-06)
03-117	KSF90 (07-09)
03-101	KLF220 (88-02)
03-111	KLF250 (03-06)
03-120	KLF250 (07-11)
03-106	KSF250 (87-04)
03-118	KEF300 (95-03)
03-103	KLF300 (86-88)
03-104	KLF300 (89-04)
03-105	KLF300 4x4 (89-04)
03-109	KVF300 (99-02)
03-112	KVF360 (03-09)
03-107	KLF400 (93-95)
03-108	KLF400 (96-99)
03-221	KSF400 (03-06)
03-110	KVF400 (99-02)
03-113 *	KVF650 (02-09)
	KVF700 (04-06)
03-116 *	KSV700 (04-09)
03-119 *	KVF750 (05-07)

* Parts included for two carburetors.

CARBURETOR REPAIR KITS

Complete kits to rebuild O.E. carburetors. Each kit contains all necessary parts, such as: jet needles, main and slow jets, float chamber gaskets, and float valves.



PART #	APPLICATION
POLARIS	
03-418	Predator 50 (05-06)
03-419	Predator 50 (07)
	Outlaw 50 (08-09)
03-420	Outlaw 50 (10-11)
	Outlaw 90 (09-11)
	Sportsman 90 (09-11)
03-421	Predator 90 (05-06)
	Sportsman 90 (05-06)
03-422	Outlaw 90 (07-08)
	Sportsman 90 (08)
03-411	Phoenix 200 (05-09)
03-401	Trail Blazer (90-95)
	Trail Boss (89-99)
	Trail Boss 2x4 (89-93)
	Trail Boss 4x4 (89-93)
03-405	Trail Blazer (96-00)
	Xplorer 4x4 (00)
03-402	300 2x4/4x4 (94-95)
	Xplorer 300 (96-99)
	Xpress 300 (96-99)
03-423	Mugnum 325 2x4 (00-02)
	Mugnum 325 4x4 (00-02)
	Trail Boss 325 (00-01)
03-409	Magnum 330 2x4 (03-05)
	Magnum 330 4x4 (03-05)
	Trail Boss 330 (03-05)
03-424	Sportsman 335 (99-00)
03-403	Trail Boss 350L (92-93)
	Sportsman 4x4 (93)
03-404	400L 2x4/4x4 (94)
	Sport 400 (94-95)
	Sportsman 4x4 (94-95)
	Xplorer 400 4x4 (95)
03-426	Ranger 400 (10-14)
03-406	Scrambler 400 4x4(97-00)
	Scrambler 400 2x4(00-01)
03-407	Xplorer 400 (97-02)
03-412	Sportsman 400 (01-02)
03-413	Sportsman 400 (03-05)
03-414	Sportsman 450 (06-07)
	Sportsman 400 HO(08-09)
03-415	Predator 500 (03-07)
03-425	Ranger 500 4x4 (04-06)

PART #	APPLICATION
03-408	Scrambler 500 2x4(01-02)
	Scrambler 500 4x4(98-02)
	Sportsman 500 (01-02)
03-410	Scrambler 500 4x4(03-05)
	Sportsman 500 (03-05)
03-416	Sportsman 500 (99-00)
03-417	Sportsman 700 (02-06)
SUZUKI	
03-222	LT-A50 (02-05)
03-223	LT-Z50 (06-09)
03-210	LT80 (87-06)
03-201	ALT/LT125 (83-87)
03-208	LT160E (89-92)
	LT-F160 (91-00)
03-217	LT185 (84-87)
03-204	LT230GE (85-86)
	LT-F230 (86-87)
03-205	LT230E (89-93)
03-202	LT230S (85-88)
03-203	LT250R (85-86)
03-218	LT250R (88-92)
03-206	LT4WD (87-89)
	LT-F250 (88-89)
03-207	LT4WD (90-96)
	LT-F250 (90-96)
03-211	LT-F250 (97-99)
	LT-F250F (99)
	LT-F4WD (97-98)
03-214	LT-F250 (00-01)
	LT-F250F (00-02)
03-215	LT-F250 (03-09)
03-219	LT-Z250 (04-09)
03-209	LT4WDX (91-98)
	LT-F300F (99)
03-220	LT-F300F (00-02)
03-213	LT-A400F (03-07)
	LT-F400F (03-07)
03-224	LT-A400F (08-09)
	LT-F400F (08-09)
03-221	LT-Z400 (03-08)
03-212	LT-F500F (98-02)
03-216	LT-A500F (02-07)
	LT-F500F (03-07)

PART #	APPLICATION
YAMAHA	
03-323	YFM50/R (04-08)
03-309	YFM80 (92-01)
	YFM80R (02-08)
03-319	YFA-1 (89-04)
	YFM125 (04-06)
03-329	YFM125G (07-12)
03-310	YFM200 (86-89)
03-301	YFS200 (88-06)
03-306	YFB250/U (92-98)
	YFB250FW (94-98)
03-302	YFM250 (89-91)
03-316	YFM250 (99-04)
03-324	YFM250B (05-09)
03-325	YFM250R (08-09)
03-321	YFM350/4WD (04-09)
03-304	YFM350ER (89-93)
	YFM350FW (89-97)
	YFM400FW (93-95)
03-330	YFM350F (98-99)
	YFM350U (99)
03-326	YFM350FX (96-05)
03-322	YFM350R (04-08)
03-307	YFM350X (88-04)
03-331	YFM350X (06-09)
03-308	YFZ350 (88-06)
03-312	Big Bear 400 (00-12)
03-311	Kodiak 400 (96-98)
03-313	Kodiak 400 (00-04)
03-317	YFM450 (03-06)
	YFM450FX (06)
03-332	YFM450FG (07-12)
	YFM450FX (07-10)
03-320	YFZ450 (04-09)
03-327	YXR450F Rhino (06-09)
03-314	YFM600 (98-01)
03-318	YFM660 (02-05)
03-333	YFM660F (06-08)
03-315 *	YFM660R (01-05)
03-328	YXR660F Rhino (04-07)

* Parts included for two carburetors.

PISTON KITS

High quality replacement piston kits properly meet O.E.M. specifications. Kit includes piston, ring set, wrist pin and circlips.



APPLICATION		STD	0.25	0.50	0.75	1.00	1.25
HONDA							
ATC200/E	(81-83)	04-011	04-012	04-013	04-014	04-015	04-016
ATC200ES	(84)						
ATC200M	(84-85)						
ATC200S	(84-86)						
TRX200	(84)						
ATC200X	(83-87)	04-021	04-022	04-023	04-024	04-025	04-026
TRX200SX	(86-88)						
ATC250ES	(85-87)	04-051	04-052	04-053	04-054	04-055	
ATC250SX	(85-87)						
TRX250	(85-87)						
TRX250	(97-01)	04-061	04-062	04-063	04-064	04-065	
TRX250	(02-05)	04-091	04-092	04-093	04-094	04-095	
TRX250EX	(01-05)						
TRX300/FW	(88-00)	04-031	04-032	04-033	04-034	04-035	
TRX350	(00-04)	04-071	04-072	04-073	04-074	04-075	
TRX400 Rancher AT	(05-07)	04-0A1	04-0A2	04-0A3	04-0A4	04-0A5	
TRX400EX	(99-08)	04-081	04-082	04-083	04-084	04-085	
TRX400FW	(95-03)	04-001	04-002	04-003	04-004	04-005	
TRX420 Rancher	(07-11)	04-0H1	04-0H2	04-0H3	04-0H4	04-0H5	
TRX450ES/S	(98-04)	04-041	04-042	04-043	04-044	04-045	
TRX500 Foreman	(05-11)	04-0G1	04-0G2	04-0G3	04-0G4	04-0G5	
KAWASAKI							
KLF220	(88-02)	04-101	04-102	04-103	04-104	04-105	
KLF250	(03-10)	04-121	04-122	04-123	04-124	04-125	
KEF300	(95-03)	04-111	04-112	04-113	04-114	04-115	
KLF300/4x4	(85-04)						
KVF300/4x4	(99-02)						
KVF360/4x4	(03-10)	04-131	04-132	04-133	04-134	04-135	
SUZUKI							
LT230E/GE	(85-93)	04-201	04-202	04-203	04-204	04-205	
LT-F230	(86-87)						
LT4WD	(87-96)						
LT-F250	(88-09)						
LT-Z250	(04-09)						
LT-F4WD	(97-98)						
LT-F300F	(99-02)	04-211	04-212	04-213	04-214	04-215	
LT-F4WDX	(91-98)						
LT-A400/F	(02-08)	04-221	04-222	04-223	04-224	04-225	
LT-F400/F	(02-08)						
YAMAHA							
YFM80	(85-08)	04-331	04-332	04-333	04-334	04-335	
YFM200/DX	(85-89)	04-361	04-362	04-363	04-364	04-365	
YTM200/E/ER	(83-85)						
YFM225	(86-88)	04-351	04-352	04-353	04-534	04-355	
YTM225DR/DX	(83-86)						
YFB250/F/U	(92-00)	04-301	04-302	04-303	04-304	04-305	
YFM250	(89-91)						
YFM250B	(05-09)						
YFM250X	(99-04)						
YFM350ER/U	(87-00)	04-311	04-312	04-313	04-314	04-315	
YFM350F/FW	(87-99)						
YFM350FX/X	(87-09)						
YFM350G	(07-10)						
YFM350R	(04-09)						

PISTON KITS

APPLICATION		STD	0.25	0.50	0.75	1.00	1.25
YAMAHA							
YFM400F/FW	(93-06)	04-321	04-322	04-323	04-324	04-325	
YFM400FB	(07-11)						
YFM400A/FA	(00-06)	04-371	04-372	04-373	04-374	04-375	
YFM400FG	(07-08)						
YFM450FA	(03-06)	04-391	04-392	04-393	04-394	04-395	
YFM450FG	(07-14)						
YFM450FX	(06-10)						
YXR450F	(06-09)						
YFM600	(98-01)	04-341	04-342	04-343	04-344	04-345	
YFM660FWA	(02-08)	04-381	04-382	04-383	04-384	04-385	
YFM660R	(01-05)						
YXR660F	(04-07)						

PISTON RING SETS

Replacement piston ring sets to fit O.E.M. pistons.
Made by O.E. manufacturers in Japan.



APPLICATION		STD	0.25	0.50	0.75	1.00	1.25
HONDA							
ATC200/E	(81-83)	04-511	04-512	04-513	04-514	04-515	04-516
ATC200ES	(84)						
ATC200M	(84-85)						
ATC200S	(84-86)						
ATC200X	(83-87)						
TRX200	(84)						
TRX200SX	(86-88)						
ATC250ES	(85-87)	04-531	04-532	04-533	04-534	04-535	
ATC250SX	(85-87)						
TRX250	(85-87)						
TRX250X	(87-92)						
TRX300/FW	(88-00)						
TRX250	(97-05)	04-561	04-562	04-563	04-564	04-565	
TRX250EX	(01-05)						
TRX350	(00-04)	04-571	04-572	04-573	04-574	04-575	
TRX400 Rancher AT	(05-07)	04-5A1	04-5A2	04-5A3	04-5A4	04-5A5	
TRX400EX	(99-08)	04-581	04-582	04-583	04-584	04-585	
TRX400FW	(95-03)	04-501	04-502	04-503	04-504	04-505	
TRX420 Rancher	(07-11)	04-5H1	04-5H2	04-5H3	04-5H4	04-5H5	
TRX450ES/S	(98-04)	04-541	04-542	04-543	04-544	04-545	
TRX500 Foreman	(05-11)	04-5G1	04-5G2	04-5G3	04-5G4	04-5G5	
KAWASAKI							
KLF220	(88-02)	04-601	04-602	04-603	04-604	04-605	
KLF250	(03-10)	04-621	04-622	04-623	04-624	04-625	
KEF300	(95-03)	04-611	04-612	04-613	04-614	04-615	
KLF300/4x4	(85-04)						
KVF300/4x4	(99-02)						
KVF360/4x4	(03-10)	04-631	04-632	04-633	04-634	06-645	

PISTON RING SETS

APPLICATION		STD	0.25	0.50	0.75	1.00	1.25
SUZUKI							
LT230E/GE	(85-93)	04-701	04-702	04-703	04-704	04-705	
LT-F230	(86-87)						
LT4WD	(87-96)						
LT-F250	(88-09)						
LT-Z250	(04-09)						
LT-F4WD	(97-98)						
LT-F300F	(99-02)	04-711	04-712	04-713	04-714	04-715	
LT-F4WDX	(91-98)						
LT-A400/F	(02-08)	04-721	04-722	04-723	04-724	04-725	
LT-F400/F	(02-08)						
YAMAHA							
YFM80	(85-08)	04-831	04-832	04-833	04-834	04-835	
YFM200/DX	(85-89)	04-861	04-862	04-863	04-864	04-865	
YTM200/E/ER	(83-85)						
YFM225	(86-88)	04-851	04-852	04-853	04-854	04-801	
YTM225DR/DX	(83-86)						
YFB250/F/U	(92-00)	04-801	04-802	04-803	04-804	04-805	
YFM250	(89-91)						
YFM250B	(05-09)						
YFM250X	(99-04)						
YFM350ER/U	(87-00)	04-811	04-812	04-813	04-814	04-815	
YFM350F/FW	(87-99)						
YFM350FX/X	(87-09)						
YFM350G	(07-10)						
YFM350R	(04-09)						
YFM400F/FW	(93-06)						
YFM400FB	(07-11)						
YFM400A/FA	(00-06)	04-871	04-872	04-873	04-874	04-875	
YFM400FG	(07-08)						
YFM450FA	(03-06)	04-891	04-892	04-893	04-894	04-895	
YFM450FG	(07-14)						
YFM450FX	(06-10)						
YXR450F	(06-09)						
YFM600	(98-01)	04-841	04-842	04-843	04-844	04-845	
YFM660FWA	(02-08)	04-881	04-882	04-883	04-884	04-885	
YFM660R	(01-05)						
YXR660F	(04-07)						

CYLINDERS

Cylinders are made strictly to O.E. specifications. Directed by Japanese engineer technicians to manufacture in China.

PART #	APPLICATION
05-021	KLF220 (92-02)
05-022	KLF300 (88-03)



ONE-WAY CLUTCH BEARING

Top quality Japanese one-way clutch bearing. Just one bearing fits many models just by flipping it over for installation.



PART #	APPLICATION
11-901	HONDA
	ATC250ES/SX (85-87)
	TRX250 (85-87)
	TRX300 (88-01)
	TRX350 (00-06)
	TRX400FW (95-03)
	TRX450ES/S (98-04)
	TRX500 Foreman (05-09)
	SUZUKI
	LT-A400/F (02-12)
	LT-F400/F (02-12)
	LT-A450X (07-10)
	LT-A500F (00-07)
	LT-A500X (11-13)
	LT-F500F (98-07)
	LT-A700X (05-07)
	LT-A750X (08-13)
	YAMAHA
	YFM350F (98-99)
	YFM350FX (97-05)
	YFM350U (99)
	YFM400/F (00-06)
	YFM400FB (07-12)
	YFM400FW (96-99)
	YFM400FW (96-99)
	YFM550FG (09-13)
	YFM600F (98-01)
	YFM660F/FG (02-08)
	YFM700FG (07-13)

PISTON PIN BEARINGS

Top quality needle roller cages come in a variety of sizes.



PART #	SIZE (mm)	O.E.M. #	APPLICATION
HONDA			
10-001	18x22x22	91015-357-003	ATC250R (81-86)
		91015-KZ3-003	FL250 (77-84)
			TRX250R (86-89)
KAWASAKI			
10-201	18x22x24	13033-1010	KXF250 (87-88)
			KXT250 (84-87)
SUZUKI			
10-101	18x23x24	09263-18025	LT250R (85-92)
			LT500R (87-90)
YAMAHA			
10-301	16x21x23	93310-316D6-00	YFS200 (88-06)
			YFZ350 (87-06)
10-351	18x23x22	93310-418E9-00	YTZ250 (85-86)

ENGINE VALVES

High quality replacement engine valves. Intake and exhaust valves sold separately, or in pairs.

Suffix A: Intake Valve
 Suffix B: Exhaust Valve



EACH #	PAIR #	APPLICATION
HONDA		
14-001A	07-001	ATC70 (78-85)
14-001B		TRX70 (86-87)
14-002A	07-002	ATC90 (72-78)
14-002B		ATC110 (79-85)
14-023A	07-023	TRX90 (93-06)
14-023B		TRX90EX (07-08)
14-017A	07-017	ATC125M (84-85)
14-017B		TRX125 (85-86)
14-022A	07-022	ATC125M (86-87)
14-022B		TRX125 (87-88)
14-004A	07-004	ATC185 (80)
14-004B		ATC185S (81-83)
		ATC200 (81-83)
		ATC200E (82-83)
		ATC200ES (84)
		ATC200M (84-85)
		ATC200S (84-86)
		ATC200X (83-85)
		TRX200 (84)
14-015A	07-015	ATC200X (86-87)
14-015B		TRX200 (90-91)
		TRX200D (91-97)
		TRX200SX (86-88)
14-019A	07-019	ATC250ES (85-87)
14-019B		ATC250SX (85-87)
		TRX250 (85-87)
14-021A	07-021	TRX250 (97-01)
14-021B		
14-026A	07-026	TRX250EX (01-08)
14-026B		
14-016A	07-016*	TRX250X (87-92)
14-016B		TRX300EX (93-08)
14-020A	07-020	TRX300 (88-00)
14-019B		TRX300FW (88-00)
14-018A	07-018*	ATC350X (85-86)
14-018B		TRX350/D (86-89)
14-029A	07-029	TRX350 Rancher
14-029B		(00-06)
14-025A	07-025*	TRX400EX (99-07)
14-025B		TRX500
		Rubicon (01-11)
14-024A	07-024	TRX400FW (95-03)
14-024B		
14-030A	07-030	TRX450 Foreman
14-030B		(98-04)
14-028A	07-028*	TRX450R (04-05)
14-028B		

EACH #	PAIR #	APPLICATION
14-031A	07-031	TRX500 Foreman
14-031B		(05-11)
14-027A	07-027*	TRX650FA (03-05)
14-027B		TRX650FGA (04-05)
		TRX680FA (06-11)
		TRX680FGA (06-09)
KAWASAKI		
14-112A	07-112	KLF110/E (87-88)
14-112B		KLT110 (84-86)
14-111A	07-111	KLT160 (85)
14-111B		KLF185 (85-88)
		KLT185 (86-87)
14-101A	07-101	KLT200 (81-84)
14-101B		KLT250 (82-85)
		KEF300 (95-03)
		KLF300 (85-04)
		KLF300 4x4 (89-04)
		KVF300 (99-02)
14-109A	07-109	KLF220 (88-02)
14-109B		KLF250 (03-11)
14-110A	07-110*	KSF250 (87-03)
14-110B		
14-115A	07-115	KVF360 (03-11)
14-115B		
14-113A	07-113*	KLF400 (93-99)
14-113B		KVF400 (97-02)
14-208A	07-208*	KSF400 (03-06)
14-208B		
14-114A	07-114**	KVF650 (02-03)
14-114B		KVF650 (05-11)
		KSV700 (04-09)
		KVF700 (04-06)
		KVF750 (05-11)
SUZUKI		
14-206A	07-206	LT-F160 (91-01)
14-206B		LT160E (89-92)
14-204A	07-204	LT-F230 (86-87)
14-204B		LT230E (87-93)
		LT230GE (85-86)
		LT230S (85-88)
		LT-F250 (03-09)
		LT-Z250 (04-09)
14-205A	07-205	LT-4WD (87-98)
14-204B		LT-F250 (88-01)
		LT250S (89-90)
		LT-F300F (99-02)
		LT-F4WDX (91-98)

EACH#	PAIR#	APPLICATION
14-207A	07-207	LT-A400/F (02-07)
14-207B		LT-F400/F (02-07)
		LT-A450X (07-09)
		LT-A500F (00-07)
		LT-F500F (98-07)
14-208A	07-208*	LT-Z400 (04-09)
14-208B		
YAMAHA		
14-309A	07-309	YFM80 (86-88)
14-309B		YFM80 (92-01)
		YFM80G (07-08)
		YFM80R (02-08)
		YFM100 (87-91)
14-310A	07-310	YFA1 (89-04)
14-310B		YFM125/G (04-11)
14-301A	07-301	YFM200/DX (85-89)
14-301B		YTM200/E/ER (83-85)
		YFM225 (86-88)
		YTM225DR/DX (83-86)
		YFB250/U (92-98)
		YFB250F (94-00)
		YFM250 (89-91)
		YFM250B (05-09)
		YFM250X (99-04)
14-302A	07-302	YFM350ER (87-95)
14-302B		YFM350F/FW (87-99)
		YFM350U (96-00)
14-308A	07-308	YFM350A/FA (04-06)
14-308B		YFM350FG/G (07-11)
		YFM350FX (95-05)
		YFM350X (87-04)
		YFM350X (06-09)
		YFM400F/FW (93-05)
14-312A	07-312	YFM400A (00-05)
14-312B		YFM450FA (03-06)
		YFM450FG (07-11)
14-311A	07-311*	YFM600 (98-01)
14-311B		
14-313A	(x3)	YFM660F (02-06)
14-313B	(x2)	YFM660R (01-05)
14-314A	07-314*	YFM700FG (07-11)
14-314B		YFM700R (06-11)

* Two pairs required to complete engine.
 ** Four pairs required to complete engine.

MASTER CYLINDER REBUILD KITS

Each complete kit includes necessary components to rebuild the master cylinders. Manufactured by Nissin.

[FRONT]

PART #	APPLICATION
HONDA	
06-004	ATC200X (83-85) ATC250R (81-84)
06-001	ATC200X (86-87) TRX200 (84) TRX200/D (90-97) TRX200SX (86-88) ATC250R (85-86) TRX250 (85-86) TRX250 (97-08) TRX250EX (01-08) TRX300 (88-99) TRX300EX (05-08) ATC350X (85-86) TRX350/D (86-87) TRX350/4x4 (00-03) TRX400EX (99-08)
06-002	TRX250R (87-89) TRX250X (87-88) TRX250X (91-92) TRX300EX (93-04)
06-003	TRX300 (00) TRX300FW (88-00) TRX400FW (95-03) TRX450 (98-04) TRX500 (01-03) TRX500FA/FGA (04)
06-005	TRX350 (04-06) TRX400 (04-07) TRX420 (07-08) TRX500 (05-08) TRX500FA/FGA (05-08) TRX650 (03-05) TRX680 (06-07)
06-006	TRX450ER (07-09) TRX450R (04-09)
KAWASAKI	
06-101	KSF250 (88-04) KEF300 (95-03) KLF300/4x4 (86-04) KVF300/4x4 (99-02) KVF360 (03-09) KLF400 (93-99) KVF400/4x4 (97-02) KVF650 (02-03) KVF650D/E (05-09) KSV700 (04-09) KVF700 (04-06)
06-102	KVF650F/H (07-09) KVF750 (05-09)

PART #	APPLICATION
SUZUKI	
06-201	LT230E/GE (85-93) LT230S (85-88) LTF230 (86-87) LT250R (85-92) LT250S (89-90) LTZ250 (04-08) LT4WD (87) LT300E (87-89) LTZ400/Z (03-08) LTR450/Z (06-08) LT500R (87-90)
06-202	LT250EF (85-86) LTF250/F (88-08) LT4WD (88-96) LTF4WD (97-98) LTF4WDX (91-98) LTF300F (99-02) LTA400/F (02-08) LTF400/F (02-08) LTA450X (07-08) LTA500F (00-07) LTF500F (98-07) LTA700X (05-07) LTA750X (08)
YAMAHA	
06-303	YFS200 (03-06) YFM350R (04-08) YFM350X (02-04) YFZ350 (02-06) YFZ450 (04-06) YFM660R (01-05) YFM700R (06) YFM700FG (07)
06-304	YFM250B (05-08) YFM250X (02-04) YFM350A/G (04-08) YFM350FA/FG (04-08) YFM350FX (02-05) YFM350X (06-08) YFM400A (03-04) YFM400F (02-08) YFM400FA (02-06) YFM450FA/FG (03-08) YFM450FX (06-08) YFM660F (02-08)
06-301	YFM350FW (87-98) YFM350FX (96-01) YFM350U (96-98) YFM350X (88-01) YFZ350 (87-01) Big Bear 400 (00-01) YFM400FW (93-98)
06-302	YFM350U (99) YFM350F (99) YFM400F (99) YFM600 (98-01)



[REAR]

PART #	APPLICATION
HONDA	
06-051	TRX250X (87-88) TRX250X (91-92) TRX300EX (93-08) TRX450R/ER (04-12) TRX700XX (08)
06-052	TRX400EX (99-08)
06-053	TRX650 (03-05) TRX680 (06-08)
KAWASAKI	
06-151	KSF250 (87-03) KEF300 (95-03)
SUZUKI	
06-251	LT230E (87-93) LT230S (85-88) LT250R (85-92) LT250S (89-90) LT500R (87-90)
06-252	LTR450/Z (06-08) LTA500F (06-07) LTF500F (03-07)
YAMAHA	
06-352	YTZ250 (85-86) YFM350X (87-89) YFZ350 (87-01)
06-354	YFM350R (04-08) YFZ350 (02-06)
06-351	YFM350X (90-04)
06-353	YFM250R (08-12) YFZ450 (07-09) YFM600R (01-05) YFM660R (01-05)
06-356	Rhino 450 (06-09) Rhino 660 (04-07) Rhino 700 (08-13) Viking 700 (14)
06-355	YFM700R (06-12)

BRAKE CALIPER REBUILD KITS

Each kit includes all necessary rubber components and pad hanger pins if it's applicable. Made by Nissin, an O.E. manufacturer in Japan.



[FRONT]

[REAR]

PART #	APPLICATION	
HONDA		
08-501	ATC200X	(83-87)
	TRX250EX	(01-08)
	TRX250X	(87-88)
	TRX250X	(91-92)
	TRX250X	(09)
	TRX300EX	(93-08)
	TRX300X	(09)
	TRX400EX	(99-08)
	TRX400X	(09)
08-502	TRX250R	(86-89)
	TAC350X	(85-86)
08-503	TRX420	(07-12)
08-504	TRX450ER	(07-12)
	TRX450R	(04-09)
	TRX700XX	(08-09)
08-505	Foreman 500	(05-11)
	Rubicon 500	(05-12)
	TRX680	(06-12)
KAWASAKI		
08-602	KVF300/4x4	(99-02)
	KVF360/4x4	(03-12)
	KVF400/4x4	(97-02)
08-601	KLF400	(93-99)
	KVF650F/G/H	(06-09)
	KRF750	(08-09)
	KVF750	(05-12)
SUZUKI		
08-701	LTF250	(02-09)
	LTZ250	(04-09)
	LTA400/F	(02-07)
	LTF400/F	(02-07)
	LTZ400/Z	(03-09)
	LTA500F	(02-07)
	LTF500F	(03-07)

PART #	APPLICATION	
08-702	LTA400/F	(08)
	LTF400/F	(08)
	LTA450X	(07-08)
	LTA700X	(06-07)
	LTA750X	(08)
08-703	LTR450	(06-08)
	LTA500F	(00-01)
	LTF500F	(98-02)
YAMAHA		
08-801	YFS200	(04-06)
	YFM250B	(05-09)
	YFM250X	(01-04)
	YFM350 Bruin	(04-06)
	YFM350F/U	(99)
	YFM350FG/G	(07-12)
	YFM350FX	(95-05)
	YFM350R	(04-12)
	YFM350X	(89-04)
	YFM350X	(06-09)
	YFZ350	(90-06)
	YFM400/F	(00-12)
	YFM400A/FA	(99-06)
	YFM450FA	(03-06)
	YFM450FG	(07-12)
	YFM450FX	(06-10)
	YFM660R	(01-05)
08-802	YFM250R	(08-12)
	YFM550FG	(09-12)
	YFM700FG	(07-12)
08-803	YFZ450	(04-09)
	YFZ450R	(09-12)
	YFZ450X	(10-11)
	YFM700R	(06-12)
08-805	YFM600	(98-01)
	YFM660F	(02-08)

PART #	APPLICATION	
HONDA		
08-551	ATC200X	(83-87)
	ATC250R	(82-84)
	ATC350X	(85-86)
	TRX250X	(87-88)
	TRX250X	(91-92)
	TRX300EX	(93-08)
	TRX300X	(09)
	TRX400EX	(99-08)
	TRX400X	(09)
08-552	ATC250R	(85-86)
	TRX250R	(86-89)
08-553	TRX450ER	(07-12)
	TRX450R	(04-09)
	TRX700XX	(08-09)
08-554	TRX650FA	(03-05)
	TRX680FA	(06-12)
YAMAHA		
08-851	YFS200	(04-06)
	YFM250R	(10-12)
	YFM660R	(01-05)
08-852	YFM250R	(08-09)
	YFM350R	(04-09)
	YFZ450	(04-05)
08-853	YFM350FX	(95-05)
	YFM350X	(87-04)
	YFZ350	(87-06)
08-854	YFM400A	(00-01)
	YFM400FA	(00-06)
	YFM450FA	(03-06)
	YFM450FG	(07)
	YFM450FX	(06-09)
08-859	YFZ450	(06-09)
	YFZ450R	(09-12)
	YFZ450X	(10-11)
08-856	YFM550FG	(09-12)
	YFM700FG	(07-12)
08-857	YFM660F	(02-08)
08-858	YFM700R	(06-12)

BRAKE PAD HANGER PINS

These include required quantities of brake pad hanger pins. Made by Nissin, the O.E. manufacturer in Japan.



[FRONT]

PART #	QTY	APPLICATION
08-051	2	HONDA
		ATC200X (83-87)
		ATC250R (81-84)
		TRX250EX (01-08)
		TRX250X (87-88)
		TRX250X (91-92)
		TRX250X (09)
		TRX300EX (93-08)
		TRX300X (09)
		TRX400EX (99-08)
		TRX400X (09)
		TRX420 (07-09)
		KAWASAKI
		KLF400 (93-99)
		KVF650 (06-09)
		KVF750 (05-09)
		SUZUKI
		LTF250 (02-08)
		LTZ250 (04-08)
		LTA400/F (02-07)
		LTF400/F (02-07)
		LTZ400/Z (03-08)
		LTR450 (06-08)
		LTA500F (00-07)
		LTF500F (98-07)
		YAMAHA
		YFS200 (04-06)
		YFM250B (05-09)
		YFM250X (01-04)
		YFM350 Bruin(04-06)
		YFM350F/U (99)
		YFM350FG/G(07-09)
		YFM350FX (95-05)
		YFM350R (04-09)
		YFM350X (89-04)
		YFM350X (06-09)
		YFZ350 (90-06)
		YFM400/F (00-09)
		YFM400A/FA (99-06)
		YFM450FA (03-06)
		YFM450FG (07-09)
		YFM450FX (06-09)
		YFM600 (98-01)
		YFM660F (02-08)
		YFM660R (01-05)

PART #	QTY	APPLICATION
08-052	1	HONDA
		TRX250R (86-89)
		TAC350X (85-86)
		YAMAHA
		YFM250R (08-09)
		YFM500FG (09)
		YFM700FG (07-09)
08-053	2	KAWASAKI
		KVF300/4x4 (99-02)
		KVF360/4x4 (03-09)
		KVF400/4x4 (97-02)
08-054	2	SUZUKI
		LTA400/F (08)
		LTF400/F (08)
		LTA450X (07-08)
		LTA700X (06-07)
		LTA750X (08)
		YAMAHA
		YFZ450 (04-09)
		YFM700R (06-09)

[REAR]

PART #	QTY	APPLICATION
08-053	2	HONDA
		ATC200X (83-87)
		ATC250R (82-84)
		ATC350X (85-86)
		TRX250X (87-88)
		TRX250X (91-92)
		TRX300EX (93-08)
		TRX300X (09)
		TRX400EX (99-08)
		TRX400X (09)
		KAWASAKI
		KSF250 (87-04)
		KEF300 (95-03)
		KSF450 (08-09)
		YAMAHA
		YFS200 (04-06)
		YFM250R (08-09)
		YFM350FX (95-05)
		YFM350R (04-09)
		YFM350X (87-04)
		YFZ350 (87-06)
		YFZ450 (04-05)
		YFM660R (01-05)
08-055	2	YAMAHA
		YFM400A (00-01)
		YFM400FA (00-06)
		YFM450FA (03-06)
		YFM450FG (07)
		YFM450FX (06-09)
		YFM700R (06-09)
08-056	1	YFM660F (02-08)

NEW

BRAKE CALIPER PISTONS

Pistons for replacing brake caliper. Includes required quantities. Made by Nissin, the O.E. manufacturer in Japan.



[FRONT]

[REAR]

PART #	QTY	APPLICATION
08-951	1	HONDA
		ATC200X (83-87)
		ATC250R (81-84)
		TRX250EX (01-08)
		TRX250X (87-88)
		TRX250X (91-92, 09)
		TRX300EX (93-08)
		TRX300X (09)
		TRX400EX (99-08)
		TRX400X (09)
08-952	2	HONDA
		ATC250R (85-86)
		TRX250R (86-89)
		ATC350X (85-86)
		KAWASAKI
		KLF400 (93-99)
		KVF650 (06-09)
		KVF750 (05-09)
		SUZUKI
		LT-R450 (06-09)
		LT-A500F (00-01)
		LT-F500 (98-02)
08-953	1	HONDA
		TRX420 (07-09)
08-954	2	HONDA
		TRX450R (04-09)
		TRX700XX (08-09)
		SUZUKI
		LT-F300F (99-02)
		YAMAHA
		YFM700R (06-09)
08-955	1	HONDA
		TRX500 (05-09)
		TRX680 (06-09)
08-956	1	SUZUKI
		LT-F250 (02-09)
		LT-Z250 (04-09)
		LT-A400/F (02-07)
		LT-F400/F (02-07)
		LT-Z400/Z (03-09)
		LT-A500F (02-07)
		LT-F500F (03-07)

PART #	QTY	APPLICATION
		YAMAHA
		YFS200 (03-06)
		YFM250B (05-09)
		YFM250X (01-04)
		YFM350A/FA (04-06)
		YFM350B (05-06)
		YFM350F/U (99)
		YFM350FG/G(07-09)
		YFM350FX (95-05)
		YFM350R (04-09)
		YFM350X (89-04)
		YFM350X (06-09)
		YFZ350 (90-06)
		YFM400 (00-04)
		YFM400A (00-04)
		YFM400F (00-09)
		YFM400FA (99-06)
		YFM450FA (03-06)
		YFM450FG (07-09)
		YFM450FX (06-09)
		YFM600 (98-01)
		YFM660F (02-08)
08-957	1	SUZUKI
		LT-A400/F (08-09)
		LT-F400/F (08-09)
		LT-A450X (07-09)
		LT-A500XP (09)
		LT-A700X (06-07)
		LT-A750X (08-09)
		YAMAHA
		YFM250R (08-09)
		YFM500FG (09)
		YFM700FG (07-09)
08-958	1	KAWASAKI
		KVF300/4x4 (99-02)
		KVF360/4x4 (03-09)
		KVF400/4x4 (97-02)

PART #	QTY	APPLICATION
08-971	1	HONDA
		ATC200X (83-87)
		ATC250R (82-84)
		TRX250X (87-88)
		TRX250X (91-92)
		TRX300EX (93-08)
		TRX300X (09)
		ATC350X (85-86)
		TRX400EX (99-08)
		TRX400X (09)
		YAMAHA
		YFS200 (03-06)
		YFM250R (08-09)
		YFM350FX (95-05)
		YFM350R (04-06)
		YFM350X (87-04)
		YFZ350 (87-06)
		YFZ450 (04-05)
		YFM660R (01-05)
08-972	1	HONDA
		TRX450R (04-09)
		TRX700XX (08-09)
08-973	1	KAWASAKI
		KSF250 (87-04)
		KXF250 (87-88)
		KXT250 (87)
		KEF300 (95-03)
		KSF450 (08-09)
08-974	1	SUZUKI
		LT-A500F (02-03)
		YAMAHA
		YFM400A (00-01)
		YFM400FA (00-06)
		YFM450FA (03-06)
		YFM450FG (07)
		YFM450FX (06-09)
08-975	2	YAMAHA
		YFZ450 (06-09)
08-976	1	YAMAHA
		YFM500FG (09)
		YFM700FG (07-09)
08-977	2	YAMAHA
		YFM660F (02-08)
08-978	1	YAMAHA
		YFM700R (06-09)

WHEEL CYLINDER REBUILD KITS

Rebuild kits for the wheel cylinders of front hydraulic drum brakes. Each kit includes all necessary parts for one side brake system.



PART #	APPLICATION	
HONDA		
06-501	TRX200/D	(90-96)
	TRX250	(97-00)
	TRX300	(88-98)
06-502	TRX200	(84)
	TRX250	(85-87)
06-503	TRX300FW	(88-00)
	TRX350	(00-03)
	TRX400FW	(95-98)
06-504	TRX350/D	(86-89)
06-505	TRX350	(04-06)
	TRX400FA/FGA	(04-07)
	TRX400FW	(99-03)
	TRX450ES/S	(98-04)
	TRX500FA/FGA	(01-04)
	TRX650FA	(03-05)
KAWASAKI		
06-521	KLF300	(86-87)
SUZUKI		
06-541	LT4WD	(87-96)
	LTF250	(88-01)
	LTF4WD	(97-98)
	LTF4WDX	(91-98)
YAMAHA		
06-561	YFM350FW	(87-98)
	YFM350U	(96-98)
	YFM400FW	(93-98)

FRONT FORK SEALS

Replacement fork seals made to meet O.E. specifications. Sold in pairs or sets. Set includes two dust wipers and two oil seals.



PAIR #	SET #	SIZE	APPLICATION
HONDA			
13-038	01-101	30x42x10.5	ATC185S (83)
			ATC200 (83)
			ATC200M (84-85)
			ATC200S (84-86)
			ATC250R (81-82)
13-007		33x46x10.5	ATC200X (83-87)
			ATC250ES (85-87)
			ATC250SX (85-87)
13-011		35x48x11	ATC250R (83-84)
			ATC350X (85-86)
13-020		39x52x11	ATC250R (85-86)

PAIR #	SET #	SIZE	APPLICATION
KAWASAKI			
13-038		30x42x10.5	KLT110 (85-86)
			KLT160 (85)
			KLT185 (86-87)
13-013		36x48x10.5	KXT250 (84-85)
13-032		41x53x10	KXT250 (86-87)
YAMAHA			
13-038		30x42x10.5	YT175 (82-83)
			YTM200/E/ER (83-85)
			YTM225DR/DX (83-85)
13-011		35x48x11	YTZ250 (85)
13-020		39x52x11	YTZ250 (86)

WHEEL BEARING SEAL KITS

Top quality bearings and dust seals offer greater protection against dirt, sand and water. Sold in kits of 1 bearing and 1 seal. Seals by itself are also available.

- * IN: Inside * OT: Outside
- * LH: Lefthand side * RH: Righthand side



[FRONT WHEEL]

KIT #	SEAL #	APPLICATION	SIDE
HONDA			
11-501	11-501S	ATC110 (82-85)	
		ATC125M (84-87)	
		ATC185/S (80-83)	
		ATC200/E (81-83)	
		ATC200ES (84)	
		ATC200M (84-85)	
		ATC200S (84-86)	
		ATC200X (83-87)	
		ATC250ES (85-87)	
		ATC250SX (85-87)	
		ATC250R (81-86)	
		ATC350X (85-86)	
		11-504	11-504S
TRX200 (90-91)			
TRX200D (91-96)			
TRX250 (85-87)	OT		
TRX250R (86-87)	OT		
TRX300 (93-00)	OT		

KIT #	SEAL #	APPLICATION	SIDE
11-505	11-505S	TRX250 (85-87)	IN
		TRX250R (86-89)	IN
		TRX250X (87-92)	IN
		TRX300EX (93-06)	IN
		TRX400EX (99-01)	IN
11-506	11-506S	TRX200SX (86-88)	OT
		TRX250R (88-89)	OT
		TRX250X (87-92)	OT
		TRX300 (88-92)	OT
		TRX300EX (93-06)	OT
		TRX400EX (99-01)	OT
SUZUKI			
11-602	11-602S	LT4WD (87-96)	OT
		LTF4WD (97-98)	OT
		LTF250 (94-01)	OT
		LTF4WDX (96-98)	OT

KIT #	SEAL #	APPLICATION	SIDE
YAMAHA			
11-804	11-804S	YFM250X (01-04)	IN
		YFM350X (87-04)	IN
		YFP350 (88)	IN
		YFZ350 (88-06)	IN
11-807	11-807S	YFB250F (96-98)	OT
		YFM350FW(87-88)	IN
		YFM350FW(87-99)	OT
		YFM350FX (95-05)	OT
		YFM400FW(93-06)	OT
11-808	11-808S	YFB250F (96-98)	IN
		YFM350FW(89-99)	IN
		YFM350FX (95-05)	IN
		YFM400FW(93-06)	IN

[REAR WHEEL]

KIT #	SEAL #	APPLICATION	SIDE
HONDA			
11-502	11-502S	ATC110 (79-85)	
		ATC125M (84-85)	
		TRX125 (84-85)	
		ATC185/S (80-83)	
		ATC200/E (81-83)	
		ATC200M (84-85)	
		ATC200S (84-86)	
		ATC200X (83-85)	
		ATC250R (81-84)	
		11-503	11-503S
TRX250R (86-89)			
TRX250X (87-92)			
TRX300EX (93-06)			
ATC350X (85-86)			
TRX400EX (99-06)			
KAWASAKI			
11-702	11-702S	KLF220 (88-02)	LH
		KLF300 4x4(88-04)	LH
		KLF400 4x4(93-99)	LH

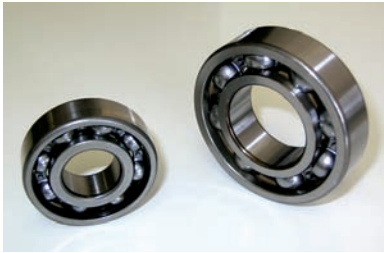
KIT #	SEAL #	APPLICATION	SIDE
SUZUKI			
11-502	11-502S	ALT125 (83-86)	
		LT125 (83-87)	
		LT160E (89-92)	
		LTF160 (91-95)	
		ALT185 (85)	
		LT185 (84-87)	
		11-601	11-601S
LT230S (85-88)			
LT250E (85-86)			
LT250R (85-92)			
LT250S (88-90)			
LT300E (87-89)			
11-604	11-604S	LT4WD (88-96)	OT
		LTF4WD (97-98)	OT
		LTF250 (88-01)	OT
		LTF4WDX (96-98)	OT
		LTZ400 (03-06)	
11-605	11-605S	LT4WD (88-95)	IN
		LTF4WD (97-98)	IN
		LTF250 (88-01)	IN
		LTF4WDX (96-98)	IN

KIT #	SEAL #	APPLICATION	SIDE
YAMAHA			
11-801	11-801S	YFA1 (89-02)	
		YT125 (80-85)	
		YFS200 (88-06)	
		YFZ350 (89-06)	LH
11-802	11-802S	YTZ250 (85-86)	
		YFZ350 (87-88)	LH
		YFZ350 (87-06)	RH
11-805	11-805S	YFB250 (92-98)	RH
		YFB250F (94-98)	RH
		YFM400FW(93-98)	RH
		YFU1 (89)	LH
11-806	11-806S	YFM250 (89-91)	LH
		YFM350ER (87-95)	LH
		YFM350FW(87-95)	LH
		YFM400FW(93-95)	LH
11-809	11-809S	YFM350FW(96-98)	LH
		YFM400FW(96-99)	LH

GENERAL

ENGINE BEARINGS

High quality unshielded ball bearings have long performance. C3 fitting.



PART #	BEARING	SIZE(mm)
11-307	# 6007	35x62x14
11-308	# 6008	40x68x15
11-324	# 6204	20x47x14
11-326	# 6206	30x62x16
11-331	# 6301	12x37x12
11-333	# 6303	17x47x14
11-335	# 6305	25x62x17
11-336	# 6306	30x72x19
11-344	# 62/32	32x65x17
11-346	# 63/22	22x56x16
11-345	# 63/28	28x68x18

WHEEL BEARINGS

Both sides rubber shielded ball bearings for protection from sand and water.



PART #	BEARING	SIZE(mm)	PART #	BEARING	SIZE(mm)
11-204	# 6004	20x42x12	11-232	# 6302	15x42x13
11-206	# 6006	30x55x13	11-236	# 6306	30x72x19
11-207	# 6007	35x62x14	11-294	# 6904	20x37x9
11-208	# 6008	40x68x15	11-241	# 6908	40x62x12
11-221	# 6201	12x32x10	11-243	# 60/32	32x58x13
11-222	# 6202	15x35x11	11-242	# 62/28	28x58x16
11-223	# 6203	17x40x12			
11-224	# 6204	20x47x14			
11-225	# 6205	25x52x15			

WATERCRAFT

PISTON PIN BEARINGS

Top quality needle roller cages come in a variety of sizes.



PART #	SIZE (mm)	O.E.M. #	APPLICATION
10-402	20x25x25	13033-3702	JH750 / JS750 (92-95)
			JT750 (93-95)
			900STS (01-02)
			JH900ZXi (95-97)
			JT900STX (97-01)
10-403	22x27x25	13033-3703	750SXi (00-02)
			JH750 / JS750 (96-99)
			JT750 (96-98)
			1100STX / 1100ZXi (00-02)
			JH1100 (96-99)
			JT1100 (97-99)
	Ultra 130 (01-02)		

SEA DOO

10-451	21x25x24	290.832.550	951GSX LTD (97-99)
			951GTX/DI/LTD (98-02)
			951LRV/DI (00-02)
			951RX/DI / 951RXX (00-02)
			951XP/LTD (98-02)
	951VSP LTD (99-02)		

YAMAHA

10-431	20x25x24	93310-320U0-00	Wave Runner 650-760 (90-00)
			Super Jet 650/700 (90-01)
			Wave Venture 700-1100 (95-98)
			Wave Raider 700-1100 (94-97)
			Wave Blaster 700/760 (93-97)
			Wave Runner 1200 (97-03)

PART #	SIZE (mm)	O.E.M. #	APPLICATION
KAWASAKI			
10-401	16x20x22.5	13033-3005	JS440 (77-92)
			JS550/SX (82-95)
10-201	18x22x24	13033-1010	JS300/SX (86-91)
			JB650 (89-91)
			JF650TS/X2 (86-96)
			JL650SC (91-95)
			JS650SX (87-94)

ALUMINUM SPACER KIT < THIN >

This kit has 3 different size diameters, and 2 different thickness size aluminum spacers. 2 of each size. Comes with plastic case.

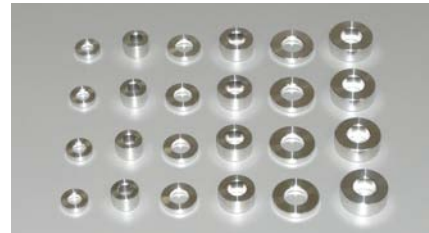
- *ID 6mm x OD 12.6mm x T 3mm
- *ID 6mm x OD 12.6mm x T 8mm
- *ID 8mm x OD 17.0mm x T 3mm
- *ID 8mm x OD 17.0mm x T 8mm
- *ID 10mm x OD 21.6mm x T 3mm
- *ID 10mm x OD 21.6mm x T 8mm



PART #
15-900

ALUMINUM SPACERS < THIN >

Individually sold by aluminum spacer size. Each pack includes 4.



PART #	SIZE
15-912	ID 6mm x OD 12.6mm x T 3mm
15-914	ID 6mm x OD 12.6mm x T 8mm
15-922	ID 8mm x OD 17.0mm x T 3mm
15-924	ID 8mm x OD 17.0mm x T 8mm
15-932	ID 10mm x OD 21.6mm x T 3mm
15-934	ID 10mm x OD 21.6mm x T 8mm

ALUMINUM SPACER KIT < THICK >

This kit has 3 different size diameters, and 2 different thickness size aluminum spacers. 1 of each size. Comes with plastic case.

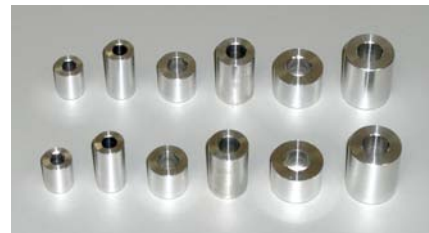
- *ID 6mm x OD 12.6mm x T 15mm
- *ID 6mm x OD 12.6mm x T 25mm
- *ID 8mm x OD 17.0mm x T 15mm
- *ID 8mm x OD 17.0mm x T 25mm
- *ID 10mm x OD 21.6mm x T 15mm
- *ID 10mm x OD 21.6mm x T 25mm



PART #
15-940

ALUMINUM SPACERS < THICK >

Individually sold by aluminum spacer size. Each pack includes 2.



PART #	SIZE
15-956	ID 6mm x OD 12.6mm x T 15mm
15-958	ID 6mm x OD 12.6mm x T 25mm
15-966	ID 8mm x OD 17.0mm x T 15mm
15-968	ID 8mm x OD 17.0mm x T 25mm
15-976	ID 10mm x OD 21.6mm x T 15mm
15-978	ID 10mm x OD 21.6mm x T 25mm

GENERAL

MAIN JETS for MIKUNI

Replacement main jets for Mikuni carbs in a large variety of sizes. Sold in packs of 5.



4/042 Hex

PART #	SIZE	PART #	SIZE	PART #	SIZE
20-080	#80	20-195	#195	20-410	#410
20-085	#85	20-200	#200	20-420	#420
20-090	#90	20-205	#205	20-430	#430
20-095	#95	20-210	#210	20-440	#440
20-100	#100	20-220	#220	20-450	#450
20-105	#105	20-230	#230	20-460	#460
20-110	#110	20-240	#240	20-470	#470
20-115	#115	20-250	#250	20-480	#480
20-120	#120	20-260	#260	20-490	#490
20-125	#125	20-270	#270	20-500	#500
20-130	#130	20-280	#280	20-510	#510
20-135	#135	20-290	#290	20-520	#520
20-140	#140	20-300	#300	20-530	#530
20-145	#145	20-310	#310	20-540	#540
20-150	#150	20-320	#320	20-550	#550
20-155	#155	20-330	#330	20-560	#560
20-160	#160	20-340	#340	20-570	#570
20-165	#165	20-350	#350	20-580	#580
20-170	#170	20-360	#360	20-590	#590
20-175	#175	20-370	#370	20-600	#600
20-180	#180	20-380	#380	20-620	#620
20-185	#185	20-390	#390	20-640	#640
20-190	#190	20-400	#400	20-660	#660



N100/604 Round (L)

PART #	SIZE	PART #	SIZE
21-070	#70	21-137	#137.5
21-072	#72.5	21-140	#140
21-075	#75	21-142	#142.5
21-077	#77.5	21-145	#145
21-080	#80	21-147	#147.5
21-082	#82.5	21-150	#150
21-085	#85	21-152	#152.5
21-087	#87.5	21-155	#155
21-090	#90	21-157	#157.5
21-092	#92.5	21-160	#160
21-095	#95	21-162	#162.5
21-097	#97.5	21-165	#165
21-100	#100	21-167	#167.5
21-102	#102.5	21-170	#170
21-105	#105	21-172	#172.5
21-107	#107.5	21-175	#175
21-110	#110	21-177	#177.5
21-112	#112.5	21-180	#180
21-115	#115	21-182	#182.5
21-117	#117.5	21-185	#185
21-120	#120	21-187	#187.5
21-122	#122.5	21-190	#190
21-125	#125	21-192	#192.5
21-127	#127.5	21-195	#195
21-130	#130	21-197	#197.5
21-132	#132.5	21-200	#200
21-135	#135		



N102/221 Round (S)

PART #	SIZE
23-090	#90
23-092	#92.5
23-095	#95
23-097	#97.5
23-100	#100
23-102	#102.5
23-105	#105
23-107	#107.5
23-110	#110
23-112	#112.5
23-115	#115
23-117	#117.5
23-120	#120
23-122	#122.5
23-125	#125
23-127	#127.5
23-130	#130
23-132	#132.5
23-135	#135
23-137	#137.5
23-140	#140
23-142	#142.5
23-145	#145
23-147	#147.5
23-150	#150
23-152	#152.5
23-155	#155
23-157	#157.5
23-160	#160
23-165	#165
23-170	#170
23-175	#175
23-180	#180
23-185	#185

PILOT JETS for MIKUNI

Replacement pilot jets for Mikuni carbs in a variety of sizes. Sold in packs of 5.



VM22/210 for VM, TM

PART #	SIZE	PART #	SIZE
22-015	#15	22-040	#40
22-017	#17.5	22-045	#45
22-020	#20	22-050	#50
22-022	#22.5	22-055	#55
22-025	#25	22-060	#60
22-027	#27.5	22-065	#65
22-030	#30	22-070	#70
22-032	#32.5	22-075	#75
22-035	#35	22-080	#80



VM28/486 for RS, HS

PART #	SIZE
24-015	#15
24-017	#17.5
24-020	#20
24-022	#22.5
24-025	#25
24-027	#27.5
24-030	#30
24-035	#35
24-040	#40
24-045	#45
24-050	#50



N224.103 for TMX Carbs

PART #	SIZE
32-020	#20
32-022	#22.5
32-025	#25
32-027	#27.5
32-030	#30
32-032	#32.5
32-035	#35
32-037	#37.5
32-040	#40
32-042	#42.5
32-045	#45
32-047	#47.5
32-050	#50
32-052	#52.5
32-055	#55

MAIN JETS for KEIHIN

Replacement main jets for Keihin carbs in a large variety of sizes. Sold in packs of 5.



99101-357 Hex



N424-27 CV Carbs



99101-393 / N424-36
Round (M)



99101-116 Round (S)

PART #	SIZE	PART #	SIZE	PART #	SIZE
25-100	#100	25-138	#138	25-175	#175
25-102	#102	25-140	#140	25-178	#178
25-105	#105	25-142	#142	25-180	#180
25-108	#108	25-145	#145	25-182	#182
25-110	#110	25-148	#148	25-185	#185
25-112	#112	25-150	#150	25-188	#188
25-115	#115	25-152	#152	25-190	#190
25-118	#118	25-155	#155	25-192	#192
25-120	#120	25-158	#158	25-195	#195
25-122	#122	25-160	#160	25-198	#198
25-125	#125	25-162	#162	25-200	#200
25-128	#128	25-165	#165	25-205	#205
25-130	#130	25-168	#168	25-210	#210
25-132	#132	25-170	#170	25-215	#215
25-135	#135	25-172	#172	25-220	#220

PART #	SIZE
39-160	#160
39-165	#165
39-170	#170
39-175	#175
39-180	#180
39-185	#185
39-190	#190
39-195	#195
39-200	#200
39-205	#205
39-210	#210
39-215	#215

PART #	SIZE	PART #	SIZE	PART #	SIZE
28-060	#60	28-120	#120	38-065	#65
28-062	#62	28-122	#122	38-068	#68
28-065	#65	28-125	#125	38-070	#70
28-068	#68	28-128	#128	38-072	#72
28-070	#70	28-130	#130	38-075	#75
28-072	#72	28-132	#132	38-078	#78
28-075	#75	28-135	#135	38-080	#80
28-078	#78	28-138	#138	38-082	#82
28-080	#80	28-140	#140	38-085	#85
28-082	#82	28-142	#142	38-088	#88
28-085	#85	28-145	#145	38-090	#90
28-088	#88	28-148	#148	38-092	#92
28-090	#90	28-150	#150	38-095	#95
28-092	#92	28-152	#152	38-098	#98
28-095	#95	28-155	#155	38-100	#100
28-098	#98	28-158	#158	38-102	#102
28-100	#100	28-160	#160		
28-102	#102	28-162	#162		
28-105	#105	28-165	#165		
28-108	#108	28-170	#170		
28-110	#110	28-175	#175		
28-112	#112	28-180	#180		
28-115	#115	28-185	#185		
28-118	#118	28-190	#190		

SLOW JETS for KEIHIN

Replacement slow jets for Keihin carbs in a variety of sizes. Sold in packs of 5.



N424-21 for PJ, PWK



N424-24 for CR Carbs



N424-26 for VB, VD



N424-74C for Kawasaki



N424-25 for CV, FCR

PART #	SIZE
26-035	#35
26-038	#38
26-040	#40
26-042	#42
26-045	#45
26-048	#48
26-050	#50
26-052	#52
26-055	#55
26-058	#58
26-060	#60
26-062	#62
26-065	#65
26-068	#68
26-070	#70

PART #	SIZE
29-040	#35
29-042	#42
29-045	#45
29-048	#48
29-050	#50
29-052	#52
29-055	#55
29-058	#58
29-060	#60
29-062	#62
29-065	#65
29-068	#68
29-070	#70

PART #	SIZE
36-040	#40
36-042	#42
36-045	#45
36-048	#48
36-050	#50
36-052	#52
36-055	#55
36-058	#58
36-060	#60
36-062	#62
36-065	#65
36-068	#68
36-070	#70

PART #	SIZE
27-035	#35
27-038	#38
27-040	#40
27-042	#42
27-045	#45
27-048	#48
27-050	#50

PART #	SIZE
35-035	#35
35-038	#38
35-040	#40
35-042	#42
35-045	#45
35-048	#48
35-050	#50
35-052	#52
35-055	#55
35-058	#58
35-060	#60
35-062	#62
35-065	#65
35-068	#68
35-070	#70
35-072	#72
35-075	#75

GENERAL

MALE/FEMALE TERMINAL SET



This set includes 30 each of male/female terminals and plastic terminal sleeves/covers. The terminals are tin plated. It comes with a plastic case.

PART #
16-601

DUAL FEMALE TERMINAL SET



Set of 5 dual female terminals with plastic covers and 10 male terminals with plastic sleeves.

Female: Rust-proof
Male: Tin plated

PART #
16-606

FLAT TERMINAL SET



This set includes 5 each of male/female flat terminals and plastic terminal sleeves/covers.

PART #
16-608

H4 BULB COUPLER SET



This coupler set is convenient for changing headlight to H4 bulb, replacement, or other purpose.

PART #
16-616

EYELET TERMINAL SETS



The set includes 5 eyelet terminals and plastic terminal sleeves. Available for three hole sizes. Terminals are rust-proof treated.

PART #	DIAMETER
16-611	6mm
16-612	8mm
16-613	10mm

WATER-RESISTANT COUPLER SETS



2-pin through 6-pin water-resistant assembling coupler sets. Rubber seals prevent water coming into the coupler. Tin plated terminals.

PART #	PINS
16-622	2-pin
16-623	3-pin
16-624	4-pin
16-626	6-pin

COLORED WIRING



This wiring is made to match with the OEM colors and is very convenient when installing electrical parts. There are 19 different colors that have been prepared and is 13 ft long. Capacity of 14A/12V.

PART #	COLOR	PART #	COLOR
16-671	Red	16-682	Black/White
16-672	Black	16-683	White/Black
16-673	Green	16-684	Gray
16-674	Sky Blue	16-685	Black/Yellow
16-675	Orange	16-686	Red/Black
16-676	Blue	16-687	Red/Yellow
16-677	White	16-688	Black/Brown
16-678	Yellow	16-689	Orange/White
16-679	Green/Yellow	16-690	Sky Blue/White
16-680	Brown		

ACCESSORY POWER OUTLET

This cigarette lighter type power outlet has a spring cap cover. For use with 12V/5A. (It is not water resistant while outlet is in use.)



PART #
16-706

LED BATTERY CHECKER

This monitor indicates battery charging ratio by LED lights.



PART #
17-875

ON/OFF SWITCH - CLAMP TYPE



On/off switch for 7/8" handlebar mounts with the clamp. Limit of 100w. It comes with 400mm length wire and 2 wire connectors.

PART #
16-701

ON/OFF SWITCH - ADHESIVE TYPE



On/off switch for fixing on any flat surface with both side adhesive mat. 100w limit. It comes with 800mm length wire and 2 wire connectors.

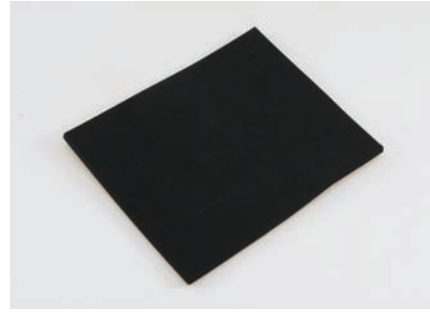
PART #
16-702

SEAT CUSHIONS

Racing type seat cushions with all back side adhesive.

Size: 245mm x 325mm

PART #	THICKNESS
15-711	8mm
15-712	15mm



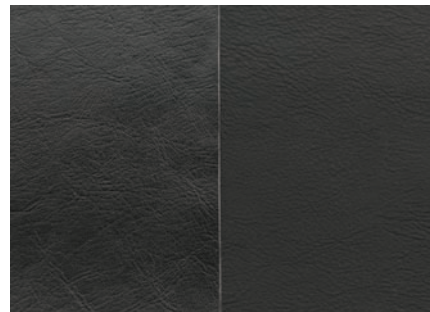
SEAT REPAIR STICKERS

Easy to repair the ripped seat, just put a repair sticker on it. Acrylic adhesive helps the lowest water sink into a seat.

*After years of using may lose adhesion.

Size: 110mm x 170mm

PART #	COLOR
15-701	Glossy Black
15-702	Mat Black



ACRYLIC ADHESIVE SHEET

This sheet is used for fixing the item firmly with both sides high-strength adhesive.

Size: 80mm x 170mm x 1.2mm

PART #	15-721
--------	---------------



TIRE BEAD WAX

Using this wax, the tire will smoothly fit into the rim without chipping the tire bead. It also helps to prevent scratches on the rim. It is effective to seal the air, and has a lemon fragrance. The size of 70mm diameter x 20mm depth is handy for taking on the ride.

PART #
08-901



EXHAUST PIPE CLAMPS

Extra strong stainless steel T-bolt clamps for resisting rust and heat. Sold by each.

PART #	DIAMETER
30-711	1.50 ~ 1.64"
30-712	1.63 ~ 1.88"
30-713	1.75 ~ 2.00"
30-714	1.94 ~ 2.18"
30-715	2.13 ~ 2.37"
30-716	2.31 ~ 2.56"
30-717	2.56 ~ 2.87"



EXHAUST PIPE SHIELD

This stainless steel heat shield protects riders leg, and customizes exhaust pipes. It fits for 40 through 55mm diameter pipes.

PART #
19-007



BRAKE BLEEDING KIT

Draws out brake fluid quickly and cleanly into a reservoir container. Kit includes a repairable pump, reservoir jar with transfer and storage lids, bleeding adapters, plastic tubing and complete instructions.

PART #
30-011

