



# 2015 PRODUCT CATALOG

**SENOX**®

**Serving the Seamless Gutter Industry Since 1972**



## **COIL**

Seamless Gutter Coil

**p.5**

## **GUTTER**

End Caps for K-Style  
Mitters for K-Style

**p.5**

Outlets for Flat Bottom Gutter  
Black MAX® Punch Paks for Flat Bottom Gutter  
Black MAX® Mini Punch Paks for Flat Bottom Gutter  
Black MAX® Punch Replacement Accessories

Flashing  
16 oz. Solid Copper Flat Sheets  
K-Style Gutter Sections  
Gutter Wedges for K-Style

## **DOWNSPOUT**

Rectangular Downspouts  
Round Downspouts  
Rectangular Elbows  
Rectangular Offsets

**p.8**

Round Elbows  
Round Offsets  
Downspout Accessories  
Downspout Drive, Rack & Key

Downspout Hangers

## **K-STYLE HANGERS**

K-Style Internal Hangers  
Spikes & Ferrules

**p.10**

## **GUTTER GUARDS**

Aluminum Expanded Wire Gutter Guard  
Powder Coated Expanded Wire Gutter Guard  
Perforated Gutter Guard  
Stainless Steel Metal Mesh Gutter Guard  
Louvered Gutter Guard  
Solid Gutter Guard

**p.12**

## **HALF ROUND GUTTER**

Reverse Bead Half Round Gutter Sections  
End Caps for Half Round  
Mitters for Half Round  
Outlets for Half Round  
Black MAX® Mini Punch Pak for Half Round  
Gutter Wedges for Reverse Bead Half Round

**p.14**

Reverse Bead Half Round Internal Hangers  
Half Round External Hangers

## **RAIN BARRELS**

Rain Barrels  
Downspout Diverters  
Splash Blocks

**p.16**

## **PAINT & SEALANT**

Touch-Up Paint  
Sealant - Nitrile Rubber Base  
Sealant - Tripolymer Base  
Sealant - Polyurethane Base  
Sealant - SBR Rubber Base  
Solder

**p.17**

## **FASTENERS**

Rivets #42 x 1/8"  
#8 Screws  
Senox SpeedMaster™ Screws  
Nails, Drive Pins & Anchors

**p.18**

## **DRAINAGE**

FLEX-Drain® Underground Drainage & Adaptors  
HDPE Drainage & Adaptors  
Universal Drainage & Adaptors

**p.19**

## **TOOLS**

Aviation Snips  
Offset Snips  
Regular Pattern Snips  
Straight Snips  
Circular "Duckbill" Snips  
Combination Snips  
End Cap Crimpers  
Downspout Crimpers

**p.20**

Hand Seamers  
Drivers, Leveling & Caulking  
Cutting & Drilling

Ladder Accessories  
Miscellaneous Accessories  
Deflectors  
Joints

## **RAIN CHAINS**

Rain Chains  
Special Order Rain Chains

**p.23**

Conductor Heads  
Special Order Architectural Conductor Heads  
Special Order Color Matched Conductor Heads

## **GUTTER MACHINES**

Barracuda® Gutter Machines  
Barracuda® XL Gutter Machines  
Gutter Machine Options

**p.26**

## **INDEX**

**p.29**

"We service the seamless gutter industry. That's all we do. If it has to do with gutters, we're either doing it, thinking about doing it, or planning to do it. We're thinking about gutters all the time." - A.B. Walters, President

### Largest Inventory In-Stock

- Complete 5", 6" & 7" K-Style and 6" Half Round product lines
- Dependable order fulfillment & delivery

### Comprehensive Color Selection

- 27 Painted aluminum colors, galvalume plus steel & solid copper
- 3 Exclusive Armor Tough® painted aluminum colors
- All backed by Senox's 50 year paint warranty



### Gutter Accessories

- Hidden hangers and half round internal & external hangers
- Outlets, offsets, miters, conductor heads, rain barrels & more



### Highest Quality Products

- State-of-the-art manufacturing equipment ensures products are of the highest quality
- Senox manufactured products are made in the USA

### Superior Packaging

- High grade cardboard used for all boxes
- Packaging specific to each product, no excess space for product to shift
- Boxes are sealed using staples vs. tape



### Gutter Machines

- Comprehensive gutter machine service
- 3 Year parts & 1 year electrical warranty on all Senox gutter machines



## SENOX BRANCH LOCATIONS

### REGION 1

#### Austin

3101 Longhorn Blvd. #106  
Austin, TX 78758  
Ph: 512-873-7280  
Fax: 512-873-7285

#### Dallas

12925 Valley Branch Ln.  
Farmers Branch, TX 75234  
Ph: 972-243-7272  
Fax: 972-243-7273

#### Fort Worth

5204-D Airport Fwy.  
Fort Worth, TX 76117  
Ph: 817-831-4900  
Fax: 817-831-4901

#### Houston Central

4466 W 12th St.  
Houston, TX 77055  
Ph: 713-316-9802  
Fax: 713-316-9807

#### Houston North

100 Northpark Central Dr. #400  
Houston, TX 77073  
Ph: 281-443-0420  
Fax: 281-443-4290

#### Longview

808-B Jordan Valley Rd.  
Longview, TX 75604  
Ph: 903-295-9555  
Fax: 903-295-9797

#### San Antonio

5540 Business Park  
San Antonio, TX 78218  
Ph: 210-661-4408  
Fax: 210-661-6658

### REGION 2

#### Charlotte

1419 Ameron Dr.  
Charlotte, NC 28206  
Ph: 704-371-5043  
Fax: 704-371-5077

#### Chattanooga

3475-C 8th Ave.  
Chattanooga, TN 37407  
Ph: 423-698-0050  
Fax: 423-698-3146

#### Clarkston

735 Park North Blvd. #106  
Clarkston, GA 30021  
Ph: 404-292-6181  
Fax: 404-292-6521

#### Fulton

555-C Wharton Circle  
Atlanta, GA 30336  
Ph: 404-691-9400  
Fax: 404-691-0094

#### Kennesaw

3690 Kennesaw S. Ind. Dr.  
Kennesaw, GA 30144  
Ph: 770-795-8500  
Fax: 770-795-9991

#### Nashville

302 Space Park Dr. S.  
Nashville, TN 37211  
Ph: 615-333-3383  
Fax: 615-333-3374

#### Suwanee

2970 Shawnee Ridge Ct. #200  
Suwanee, GA 30024  
Ph: 770-476-4141  
Fax: 770-476-4175

### REGION 3

#### Jacksonville

6858 Phillips Parkway Dr. S.  
Jacksonville, FL 32256  
Ph: 904-880-2192  
Fax: 904-880-7256

#### Tampa

121-A Kelsey Ln.  
Tampa, FL 33619  
Ph: 813-623-6178  
Fax: 813-626-1306

### REGION 10

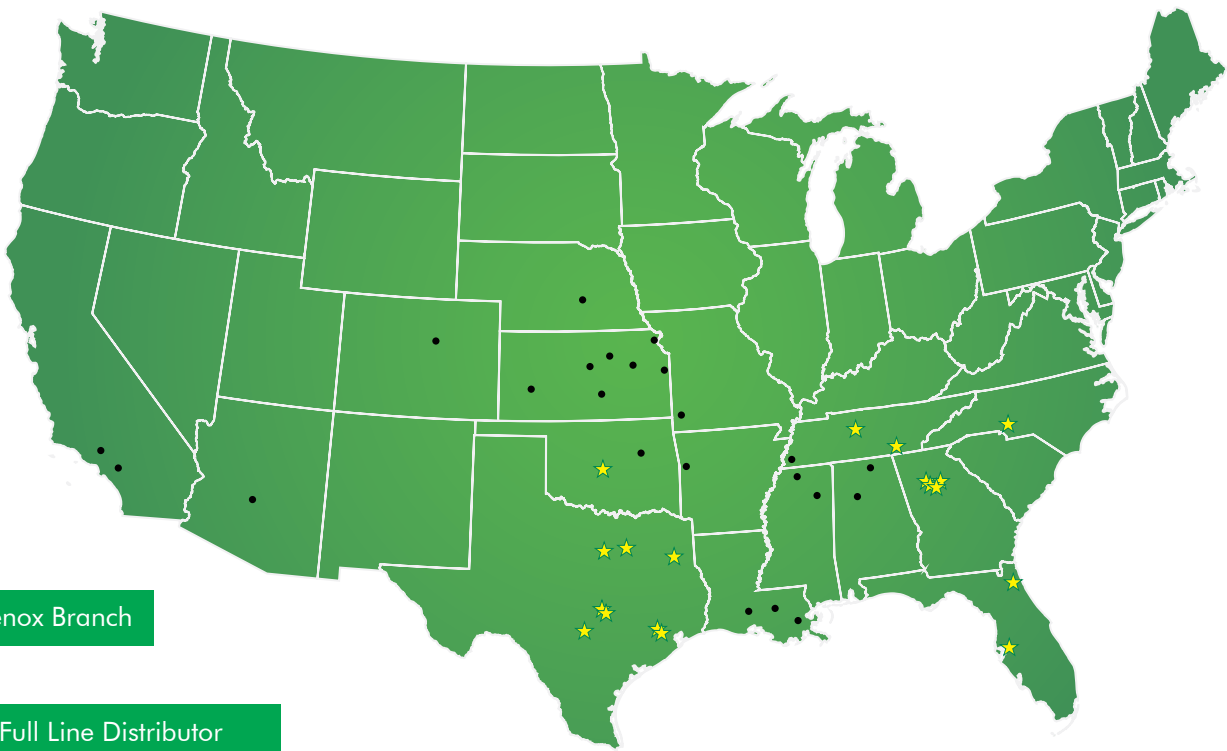
#### Oklahoma City

1340 Metropolitan Ave.  
Oklahoma City, OK 73108  
Ph: 405-948-7464  
Fax: 405-948-6287


### NATIONAL

#### National Branch

15409 Long Vista Dr.  
Austin, TX 78728  
Ph: 866-522-1696  
Fax: 800-295-2702



 Senox Branch

 Full Line Distributor

## FULL LINE DISTRIBUTORS

### ALABAMA

**Advanced Building Products**  
102 Von Braun Dr. NW  
Huntsville, AL 35806  
256-852-6415

**Goodwin Metals**  
55 Mack Borden Rd.  
Jasper, AL 35504  
205-384-6363

### ARIZONA

**Kay Supply, Inc.**  
4645 W. McDowell Rd.  
Phoenix, AZ 85035  
480-525-8895

### ARKANSAS

**All American Building Products**  
6501 S. Zero St.  
Fort Smith, AR 72903  
479-646-3000

### CALIFORNIA

**Valley Gutter Supply**  
12950 Bradley Ave.  
Sylmar, CA 91342  
818-837-6561

### COLORADO

**Skyline Enterprises, Inc.**  
4980 Oak St.  
Wheat Ridge, CO 80033  
303-744-3233

### KANSAS

**Midway Wholesale**  
215 S. 15th St.  
Elwood, KS 66024  
913-365-5956

**Midway Wholesale**  
685 Air Links Rd.  
Garden City, KS 67846  
620-276-4222

**Midway Wholesale**  
2711 Oregon St.  
Lawrence, KS 66046  
800-838-5534

**Midway Wholesale**  
8216 S. Port Dr.  
Manhattan, KS 66502  
785-537-4665

**Midway Wholesale**  
1027 York  
Salina, KS 67401  
785-823-7874

**Midway Wholesale**  
4308 Southwest Blvd.  
Wichita, KS 67215  
316-944-3999

**Midway Wholesale**  
218 SE Branner St.  
Topeka, KS 66607  
785-232-4572

**Midway Wholesale**  
4501 Merriam Dr.  
Overland Park, KS 66203  
913-362-1234

### LOUISIANA

**Advanced Building Products**  
10213 S. Perdue Ave.  
Baton Rouge, LA 70814  
225-275-8200

**Advanced Building Products**  
5734 Jefferson Hwy.  
Harahan, LA 70123  
504-733-8200

**Advanced Building Products**  
127 Amedee Dr.  
Scott, LA 70583  
337-233-8433

### MISSISSIPPI

**Camco Roofing Supply**  
117 Blackburn Dr.  
Byhalia, MS 38611  
662-838-4895

**Camco Roofing Supply**  
2115 S. Veterans Blvd.  
Tupelo, MS 38804  
662-388-5466

### MISSOURI

**Midway Wholesale**  
301 S. Maiden Ln.  
Joplin, MO 64801  
417-623-4303

### NEBRASKA

**Midway Wholesale**  
4319 Juergen Rd.  
Grand Island, NE 68801  
308-398-2100

### OKLAHOMA

**All American Building Products**  
11915 E. 51st St. #25  
Tulsa, OK 74146  
918-249-0515

### TENNESSEE

**Camco Roofing Supply**  
3082 Connahbrook Dr.  
Memphis, TN 38116  
901-396-9393

**Camco Roofing Supply**  
6009 Resources Dr.  
Memphis, TN 38134  
901-372-1402



# PAINT & METAL SELECTION

Backed By Senox's 50 Year Paint Warranty

\*Colors shown may vary from actual material\*

## TRADITIONAL PAINTED ALUMINUM

Factory Baked Finish • Flexible for Roll Forming • Exterior Durability



001 - 30° White



002 - Royal Brown



003 - Antique Ivory



004 - Black



005 - Raffia Beige



006 - Beaver Brown



007 - Classic Cream



008 - Clay



009 - Colonial Blue



010 - Sherwood Green



011 - Musket Brown



013 - Wicker



014 - Dove Gray



015 - Almond



017 - Linen



018 - Light Bronze



019 - Tuxedo Gray



020 - Heritage Cream



021 - Colonial Gray



022 - Buckskin Brown



023 - 80° White



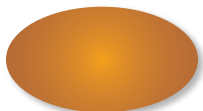
024 - Colonial Red



025 - Dark Bronze



026 - Herringbone



027 - Copper Metallic



028 - Paint Grip Metallic

## ArmertOUGH® PAINTED ALUMINUM

Exclusive Product • Abrasion Resistant • Reduces Appearance of Staining



130 - Satin White



131 - Wood Beige



132 - Cameo

## DuelTone® PAINTED ALUMINUM

Created Through a Specialized Two-Coat Process  
High Performance Exterior Finish



129 - Rustic Copper

## PREMIUM METALS

3/4 Hard 16 oz. Copper  
26 ga. Galvalume Plus Steel



890 - Solid Copper



920 - Galvalume Plus Steel

**ShadowBAK**  
wash coat®  
Non-Reflective Disappearing Wash Coat



### Found on the Interior of Senox Painted Aluminum Gutters

ShadowBAK® is a washcoat specially formulated by Senox that gives the inside of the gutter a non-reflective finish. The anodized bronze appearance provides the vanishing properties of a black shadow and erases the transition lines from the gutter to the roof.

## SEAMLESS GUTTER COIL

**11 7/8"**  
.027" Aluminum  
part # 111195XXX

**15"**  
.027" Aluminum  
part # 111505XXX

Available in: 26 Traditional, 1 Duel Tone®, 3 Armor Tough®

**11 7/8"**  
.032" Aluminum  
part # OS1111971XXX

**15"**  
.032" Aluminum  
part # OS1115071XXX

**18"**  
.032" Aluminum  
part # OS1118071XXX

Available in: 24 Traditional (Excludes Copper Metallic & Paint Grip Metallic)

Available in: 26 Traditional, 1 Duel Tone®

**11 7/8"**  
16 oz. Solid Copper  
part # 111195890

**15"**  
16 oz. Solid Copper  
part # 111505890

**18"**  
16 oz. Solid Copper  
part # 111805890

26 ga. Galvalume Plus Steel  
part # 111195920

26 ga. Galvalume Plus Steel  
part # 111505920

26 ga. Galvalume Plus Steel  
part # 111805920



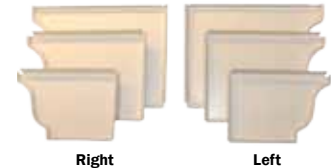
## END CAPS FOR K-STYLE

Packaged 25R/25L Units/Box

**5" Right or Left**  
right - part # 221503XXX  
left - part # 221505XXX

**6" Right or Left**  
right - part # 221603XXX  
left - part # 221605XXX

**\* 7" Right or Left**  
right - part # 221703XXX  
left - part # 221705XXX



Available in: 26 Traditional, 1 Duel Tone®, 3 Armor Tough®, 16 oz. Solid Copper, 26 ga. Galvalume Plus Steel

## MITERS FOR K-STYLE

Packaged 20 Units/Box

**5", 90°, Strip, O/S or I/S**  
O/S - part # 231511XXX  
I/S - part # 231513XXX

**6", 90°, Strip, O/S or I/S**  
O/S - part # 231611XXX  
I/S - part # 231613XXX

**\* 7", 90°, Strip, O/S or I/S**  
O/S - part # 231711XXX  
I/S - part # 231713XXX

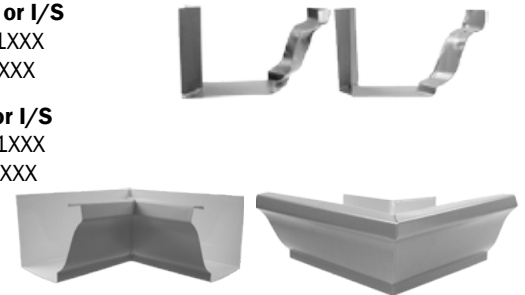
**5", 45°, Bay, O/S or I/S**  
O/S - part # 231531XXX  
I/S - part # 231533XXX

**6", 45°, Bay, O/S or I/S**  
O/S - part # 231631XXX  
I/S - part # 231633XXX

**\* 7", 45°, Bay, O/S or I/S**  
O/S - part # 231731XXX  
I/S - part # 231733XXX

**5", 90°, Box, O/S or I/S**  
O/S - part # 231561XXX  
I/S - part # 231563XXX

**6", 90°, Box, O/S or I/S**  
O/S - part # 231661XXX  
I/S - part # 231663XXX



Available in: 26 Traditional, 1 Duel Tone®, 3 Armor Tough®, 16 oz. Solid Copper, 26 ga. Galvalume Plus Steel

\* Not Available in Armor Tough®

## COLOR SELECTION

### Traditional Painted Aluminum

001 30° White	010 Sherwood Green	021 Colonial Gray
002 Royal Brown	011 Musket Brown	022 Buckskin Brown
003 Antique Ivory	013 Wicker	023 80° White
004 Black	014 Dove Gray	024 Colonial Red
005 Raffia Beige	015 Almond	025 Dark Bronze
006 Beaver Brown	017 Linen	026 Herringbone
007 Classic Cream	018 Light Bronze	027 Copper Metallic
008 Clay	019 Tuxedo Gray	028 Paint Grip Metallic
009 Colonial Blue	020 Heritage Cream	

### Duel Tone® Painted Aluminum

129 Rustic Copper

### Armor Tough® Painted Aluminum

130 Satin White  
131 Wood Beige  
132 Cameo

### Metal Selection

099 Mill Finish Aluminum  
870 Brass  
890 Solid Copper  
910 Galvanized Steel  
920 Galvalume Plus Steel  
968 Copper Plus

\* Not Available in Armor Tough®



## OUTLETS FOR FLAT BOTTOM GUTTER

**2 3/8" Round**  
250 pcs/box  
part # 261211XXXX



**2 3/4" Round**  
250 pcs/box  
part # 261311XXXX



**2" x 3" Rectangle**  
100 pcs/box  
part # 264311XXXX



Available in: 30° White, Black

**3" Oval**  
100 pcs/box  
part # 263311XXXX



**4" Oval**  
50 pcs/box  
part # 263411XXXX



Available in: 30° White, Black, Solid Copper, Galvanized Steel

**3x4 Rectangle**  
100 pcs/box  
part # 2644121001



**4" x 5" Rectangle**  
30 pcs/box  
part # 2645140XXX



Available in: 30° White

Available in: Aluminum, Solid Copper, Galvanized Steel

## BLACK MAX® PUNCH PAKS FOR FLAT BOTTOM GUTTER

**2 3/8" Round**  
750 Outlets  
part # 2612119004

**2 3/4" Round**  
750 Outlets  
part # 2613119004

**2" x 3" Rectangle**  
900 Outlets  
part # 2643119004

**3" Oval**  
900 Outlets  
part # 2633119004

**4" Oval**  
450 Outlets  
part # 2634119004



Includes: Punch, 1 1/2" Hole Saw, 1/4" Driver Power Bit, Outlets

## BLACK MAX® MINI PUNCH PAKS FOR FLAT BOTTOM GUTTER

**2 3/8" Round**  
35 Outlets  
part # 2612118004

**2 3/4" Round**  
35 Outlets  
part # 2613118004

**2" x 3" Rectangle**  
100 Outlets  
part # 2643118004

**3" Oval**  
100 Outlets  
part # 2633118004

**4" Oval**  
50 Outlets  
part # 2634118004



Includes: Punch, 1 1/2" Hole Saw, 1/4" Driver Power Bit, Outlets

## BLACK MAX® PUNCH REPLACEMENT ACCESSORIES

**Hole Saw 1 1/2", for Punch**  
part # 8926928



**Driver Bit 1/4", for Punch**  
part # 8950812

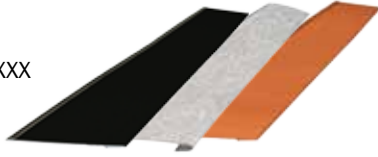




## FLASHING

### Drip Cap

30 pcs/box  
4' - part # 291812XXX



Available in: Black, 16 oz. Solid Copper, 26 ga. Galvalume Plus Steel

### Drip Edge, 1 1/2" x 1 1/2"

30 pcs/box - Aluminum  
15 pcs/box - Copper, Steel  
4' - part # 291012XXX  
10' - part # 291015XXX



Available in: 26 Traditional, 1 Duel Tone®, 3 Armor Tough®, 16 oz. Solid Copper, 26 ga. Galvalume Plus Steel

## 16 OZ. SOLID COPPER FLAT SHEETS

### 3' x 10'

36 units/pallet  
part # 133655890

### 4' x 10'

50 units/pallet  
part # 134855890



## K-STYLE GUTTER SECTIONS

### Packaged 5 Units/Box

### 7" X 10'

part # 2117051890

Available in: 16 oz. Solid Copper

### 7" X 20'

part # 2117052XXX

Available in: 26 Traditional, 1 Duel Tone®, 16 oz. Solid Copper, 26 ga. Galvalume Plus Steel



## GUTTER WEDGES FOR K-STYLE

### Gutter Bumper™ SB

100 pcs/box  
part # 2928150XXX



Available in: 30° White, Black, 16 oz. Solid Copper, 26 ga. Galvalume Plus Steel

### Gutter Wedge

100 pcs/box  
5" - part # 2927150XXX  
6" - part # 2927160XXX



Available in: Black, Solid Copper, 26 ga. Galvalume Plus Steel

### Gutter Wedge

100 pcs/box  
5" - part # 2927151001  
6" - part # 2927161001



Available in: 30° White

### T-Wedge

50 pcs/bag  
part # 292915099



Available in: Aluminum

### Jumbo T-Wedge

50 pcs/bag  
part # 292916099



## RECTANGULAR DOWNSPOUTS

**2" x 3" x 8'**  
10 units/box  
part # 414324XXX

**3" x 4" x 8'**  
10 units/box  
part #414424XXX

Available in: 26 Traditional, 1 Duel Tone®, 3 Armor Tough®

**2" x 3" x 10'**  
10 units/box - Aluminum  
5 units/box - Copper & Steel  
part # 414325XXX

**3" x 4" x 10'**  
10 units/box - Aluminum  
5 units/box - Copper & Steel  
part # 414425XXX

**\*4" x 5" x 10'**  
6 units/box  
part # 414525XXX



Available in: 26 Traditional, 1 Duel Tone®, 3 Armor Tough®, 16 oz. Solid Copper, 26 ga. Galvalume Plus Steel

## ROUND DOWNSPOUTS

Packaged 5 Units/Box

**3" x 10' Round**  
part # 415325XXX

**4" x 10' Round**  
part # 415425XXX



Available in: 26 Traditional, 1 Duel Tone®, 3 Armor Tough®, 16 oz. Solid Copper, 26 ga. Galvalume Plus Steel

## RECTANGULAR ELBOWS

**2" x 3", A or B, 75°**  
36 pcs/box  
A - part # 424327XXX  
B - part # 424377XXX

**3" x 4", A or B, 75°**  
20 pcs/box  
A - part # 424427XXX  
B - part # 424477XXX

**\*4" x 5", A or B, 75°**  
12 pcs/box  
A - part # 424527XXX  
B - part # 424577XXX

**2" x 3", A, 45°**  
42 pcs/box  
part # 424324XXX

**3" x 4", A, 45°**  
30 pcs/box  
part # 424424XXX

**\*4" x 5", A, 45°**  
12 pcs/box  
part # 424524XXX



**2" x 3", A, 22.5°**  
72 pcs/box  
part # 424322XXX

**3" x 4", A, 22.5°**  
40 pcs/box  
part # 424422XXX

**\*4" x 5", A, 22.5°**  
12 pcs/box  
part # 424522XXX

Available in: 26 Traditional, 1 Duel Tone®, 3 Armor Tough®, 16 oz. Solid Copper, 26 ga. Galvalume Plus Steel

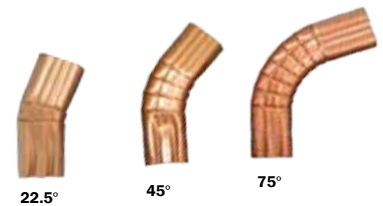
\* Not Available in Armor Tough®

**2" x 3", A or B, 90°**  
36 pcs/box  
A - part # 424329XXX  
B - part # 424379XXX

**3" x 4", A or B, 90°**  
18 pcs/box  
A - part # 424429XXX  
B - part # 424479XXX

**2" x 3", B, 45°**  
42 pcs/box  
part # 424374XXX

**3" x 4", B, 45°**  
25 pcs/box  
part # 424474XXX



Available in: 30° White, 16 oz. Solid Copper, 26 ga. Galvalume Plus Steel

## RECTANGULAR OFFSETS

**2" x 3" x 2"**  
24 pcs/box  
part # 434322XXX

**2" x 3" x 4"**  
24 pcs/box  
part # 434324XXX

**2" x 3" x 6"**  
24 pcs/box  
part # 434326XXX

**3" x 4" x 2"**  
15 pcs/box  
part # 434422XXX

**3" x 4" x 4"**  
15 pcs/box  
part # 434424XXX

**3" x 4" x 6"**  
15 pcs/box  
part # 434426XXX



Available in: 26 Traditional, 1 Duel Tone®, 3 Armor Tough®, 16 oz. Solid Copper, 26 ga. Galvalume Plus Steel

DOWNSPOUT

## ROUND ELBOWS

### 3" Round, 75°

10 units/box  
part # 425327XXX

### 3" Round, 45°

12 units/box  
part # 425324XXX

### 3" Round, 22.5°

12 units/box  
part # 425322XXX

### 4" Round, 75°

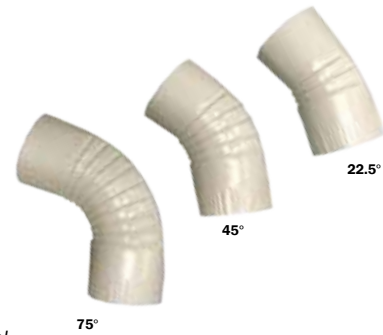
10 units/box  
part # 425427XXX

### 4" Round, 45°

10 units/box  
part # 425424XXX

### 4" Round, 22.5°

12 units/box  
part # 425422XXX



Available in: 26 Traditional, 1 Duel Tone®, 3 Armor Tough®, 16 oz. Solid Copper, 26 ga. Galvalume Plus Steel

### 3" Round, 90°

8 units/box  
part # 425329XXX

### 4" Round, 90°

8 units/box  
part # 425429XXX

Available in: 30° White, 16 oz. Solid Copper, 26 ga. Galvalume Plus Steel

## ROUND OFFSETS

### 3" Round x 2"

6 pcs/box  
part # 435322XXX

### 3" Round x 4"

6 pcs/box  
part # 435324XXX

### 3" Round x 6"

4 pcs/box  
part # 435326XXX

### 4" Round x 2"

4 pcs/box  
part # 435422XXX

### 4" Round x 4"

4 pcs/box  
part # 435424XXX

### 4" Round x 6"

4 pcs/box  
part # 435426XXX



Available in: 26 Traditional, 1 Duel Tone®, 3 Armor Tough®, 16 oz. Solid Copper, 26 ga. Galvalume Plus Steel

## DOWNSPOUT ACCESSORIES

### "Y" Cutoff Diverter 3", 4"

1 unit/box  
3" - part # 449993001  
4" - part # 449994001



### "Y" Funnel 3", 4"

1 unit/box  
3" - part # 449983001  
4" - part # 449984001



### Oval Funnel 3", 4"

1 unit/box  
3" part # 449973001  
4" part # 449974001



### 2" Round Elbow

1 unit/box  
part # 425237001



### Scupper

1 pcs/box  
part # 496770001



### Zip Hinge

12 units/bag  
part # 499181001



Available in: 30° White

Available in: White

## DOWNSPOUT DRIVE, RACK & KEY

### Packaged 50 Units/Box

#### Downspout Rack w/Key

part # 455918XXX



#### Rack & Key Drive #6 Screw-Nail On

part # 455916XXX



Available in: White and Brown Aluminum, Solid Copper, Galvanized Steel

#### Rack & Key Drive #0 Masonry

part # 455910XXX



#### Rack & Key Drive #4 Wood

part # 455914XXX



Available in: Galvanized Steel, Bronze

Available in: Solid Copper, Galvanized Steel

#### Extra Key

part # 455919XXX



Available in: Aluminum, Bronze

## DOWNSPOUT HANGERS

### Diamond for Rectangular

For 2"X3" and 3"X4"  
100 units/box  
part # 454272XXX



### Quarter Moon for Rectangular

For 2"X3" and 3"X4"  
100 units/box  
part # 454065XXX



### Quarter Moon for Round

For 3" and 4"  
100 units/box  
part # 454165XXX



Available in: 26 Traditional, 1 Duel Tone®, 3 Armor Tough®, 16 oz. Solid Copper, 26 ga. Galvalume Plus Steel

## K-STYLE INTERNAL HANGERS

### 1500 Series for 5", 6"

100 pcs/box - Aluminum  
5", no clip - part # 2415501099  
5", w/clip - part # 2415531099  
6", no clip - part # 2415601099  
6", w/clip - part # 2415631099

Mini-barrels - Aluminum  
5", no clip - 1000 pcs - part # 2415504099  
5", w/clip - 1000 pcs - part # 2415534099  
6", no clip - 500 pcs - part # 2415603099  
6", w/clip - 500 pcs - part # 2415633099



1500

### 1800 Series for 5", 6"

100 pcs/box - Aluminum  
5", no clip - part # 2418501099  
5", w/clip - part # 2418531099  
6", no clip - part # 2418601099  
6", w/clip - part # 2418631099

Mini-barrels - Aluminum  
5", no clip - 1000 pcs - part # 2418504099  
5", w/clip - 1000 pcs - part # 2418534099  
6", no clip - 500 pcs - part # 2418603099  
6", w/clip - 500 pcs - part # 2418633099



1800

### 2100 Series for 5", 6"

100 pcs/box - Aluminum  
5", no clip - part # 2421501099  
5", w/clip - part # 2421531099  
6", no clip - part # 2421601099  
6", w/clip - part # 2421631099

Mini-barrels - Aluminum  
5", no clip - 1000 pcs - part # 2421504099  
5", w/clip - 1000 pcs - part # 2421534099  
6", no clip - 500 pcs - part # 2421603099  
6", w/clip - 500 pcs - part # 2421633099



2100

### 2300 Series for 5", 6"

100 pcs/box - Aluminum, Galvanized Steel, Copper Plus  
5", no clip - part # 2423501XXX  
5", w/clip - part # 2423531XXX  
6", no clip - part # 2423601XXX  
6", w/clip - part # 2423631XXX

Mini-barrels - Aluminum  
5", no clip - 500 pcs - part # 2423503099  
5", w/clip - 500 pcs - part # 2423533099  
6", no clip - 250 pcs - part # 2423602099  
6", w/clip - 250 pcs - part # 2423632099



2300

### 2800 Series for 5", 6"

100 pcs/box - Aluminum  
5", no clip - part # 2428501099  
5", w/clip - part # 2428531099  
6", no clip - part # 2428601099  
6", w/clip - part # 2428631099

Mini-barrels - Aluminum  
5", no clip, 500 pcs - part # 2428503099  
5", w/clip, 500 pcs - part # 2428533099  
6", no clip, 250 pcs - part # 2428602099  
6", w/clip, 250 pcs - part # 2428632099



2800

### 3300 Series for 5", 6"

100 pcs/box - Aluminum, Solid Copper  
5", no clip - part # 2433551099  
5", w/clip - part # 2433571XXX  
6", no clip - part # 2433651099  
6", w/clip - part # 2433671XXX

Mini-barrels - Aluminum  
5", no clip, 500 pcs - part # 2433553099  
5", w/clip, 500 pcs - part # 2433573099  
6", no clip, 250 pcs - part # 2433652099  
6", w/clip, 250 pcs - part # 2433672099



3300

Solid Copper w/clip only

## K-STYLE INTERNAL HANGERS

### 7000 Series for 7", No Clip

400 pcs/box - Aluminum  
 200 pcs/box - Galvanized Steel  
 150 pcs/box - Stainless Steel  
 part # 2442731XXX



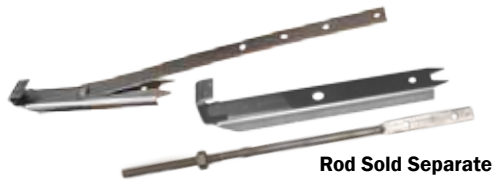
### 7500 Series for 7"

100 pcs/box  
 7", no clip - Aluminum  
 part # 2475751099  
 7", w/clip - Aluminum, Solid Copper  
 part # 2475771XXX



### 4000 Series for 5", 6"

100 pcs/box - Aluminum  
 5", Vampire, w/strap - part # 2441511099  
 5", Vampire (rod sold separate) - part # 2441561099  
 6", Vampire, w/strap - part # 2441611099  
 6", Vampire (rod sold separate) - part # 2441661099  
 11" Vampire Rod - part # 2441001099



### T-Strap, 10"

100 pcs/box - Aluminum, Solid Copper, Stainless Steel  
 part # 2499001XXX



## SPIKES

### 7" Square Shank Spike

500 units/box  
 part # 2510020XXX

### 8" Square Shank Spike

500 units/box  
 part # 2510040XXX

### 9" Square Shank Spike

500 units/box  
 part # 2510060001

Available in: 30° White, Almond, Copper

Available in: 30° White



### 7" Ring Shank Spike

500 units/box  
 part # 2510220XXX

### 8" Ring Shank Spike

500 units/box  
 part # 2510240XXX

Available in: 30° White, Almond



### 7" Galvanized Ring Shank Spike

50 lbs.  
 part # 2510225910

### 8" Galvanized Ring Shank Spike

50 lbs.  
 part # 2510245910



## FERRULES

### 5" Fin Ferrule

500 units/box  
 part # 251251XXX

### 6" Fin Ferrule

500 units/box  
 part # 251253XXX

Available in: Aluminum, Copper, Galvanized Steel

### 5" Fin Ferrule, .024

500 units/box  
 part # 251252099

### 6" Fin Ferrule, .018

500 units/box  
 part # 251254099

### 7" Fin Ferrule, .018

250 units/box  
 part # 251256099

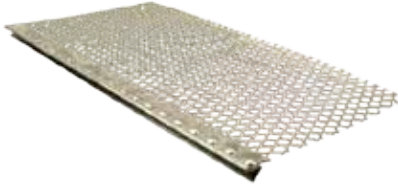
Available in: Aluminum



## ALUMINUM EXPANDED WIRE GUTTER GUARD

### Drop-In

4' pcs, 50 pcs/box  
 5" - part # 381305099  
 6" - part # 381306099



### Fast Screen

4' pcs, 50 pcs/box  
 5" - part # 381505099  
 6" - part # 381506099



Available in: Aluminum

## POWDER COATED EXPANDED WIRE GUTTER GUARD

### Roll Lock

4' pcs, 25 pcs/box  
 5" - part # 382105XXX  
 6" - part # 382106XXX  
 7" - part # 382107XXX



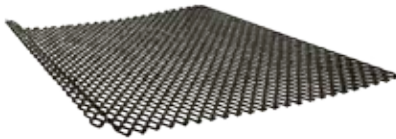
### Step Lock

4' pcs, 25 pcs/box  
 5" - part # 382305XXX  
 6" - part # 382306XXX



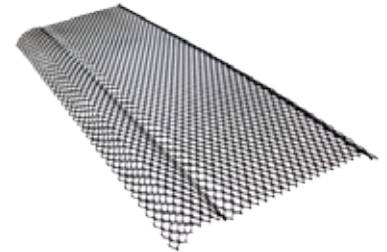
### Flat Lock

4' pcs, 25 pcs/box  
 6" - part # 382506XXX  
 7" - part # 382507XXX  
 8" - part # 382508XXX  
 9" - part # 382509XXX



### Round Lock for HR 6"

4' pcs, 25 pcs/box  
 6" - part # 382706XXX



Available in: Black, Solid Copper

## PERFORATED GUTTER GUARD

### Eave N Flow

4' pcs, 50 pcs/box  
 5" - part # 391405004  
 6" - part # 391406004



### Smart Flow

4' pcs, 50 pcs/box  
 5" x 4' - part # 391400XXX  
 6" x 4' - part # 391401XXX  
 10' pcs, 25 pcs/box  
 5" x 10' - part # 391410XXX  
 6" x 10' - part # 391411XXX  
 7" x 10' - part # 391412XXX

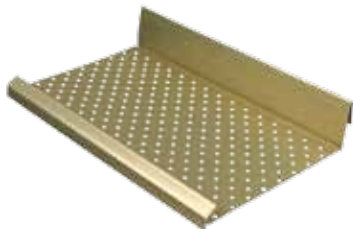


Available in: Black

Available in: White, Black

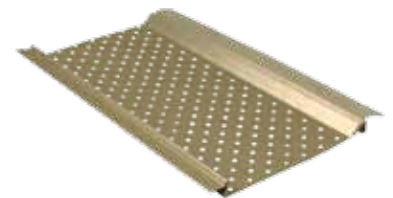
### Leaf Relief

4' pcs, 50 pcs/box  
 5" - part # 391015099  
 6" - part # 391016099



### Leaf Relief Retro Fit

4' pcs, 50 pcs/box  
 5" - part # 391035099  
 6" - part # 391036099



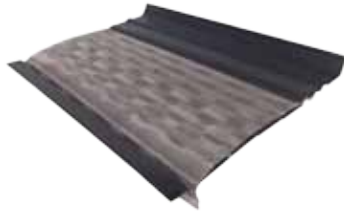
Available in: Aluminum



## STAINLESS STEEL METAL MESH GUTTER GUARD

### Mesh Guard

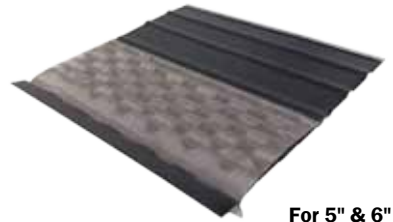
4' pcs, 25 pcs/box  
5" - part # 393005004  
6" - part # 393006004



Available in: Black

### Mesh Guard Panel

4' pcs, 25 pcs/box  
part # 393105XXX



For 5" & 6"

Available in: White, Black

## LOUVERED GUTTER GUARD

### E-Z Leaf Sweep

4' pcs, 25 pcs/box  
5" - part # 392405XXX  
6" - part # 392406XXX



Available in: White, Black

### E-Z Leaf Protection

4' pcs, 25 pcs/box  
part # 392505XXX



For 5" & 6"

### Tiger Guard®

4' pcs, 25 pcs/box  
5" - part # 391215XXX  
6" - part # 391216XXX

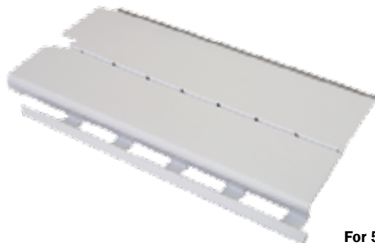


Available in: Black, Galvalume Plus Steel, Copper Plus

## SOLID GUTTER GUARD

### Leaffree

4' pcs, 25 pcs/box  
part # 395215XXX



For 5" & 6"

### Leaffree High Water Flow

4' pcs, 5 pcs/box  
part # 395225XXX

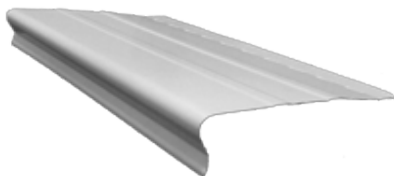


For 5" & 6"

Available in: 30° White, Royal Brown, Antique Ivory, Black, Clay, Sherwood Green, Musket Brown, Wicker, Almond, Linen, Light Bronze, Tuxedo Gray, Heritage Cream, Colonial Gray, Colonial Red, Dark Bronze  
\*Solid Copper Special Order

### Midwest Solid

4' pcs, 25 pcs/box  
5" - part # 395015XXX  
6" - part # 395016XXX



Available in: 30° White, Royal Brown, Black, Clay, Wicker, Almond, Light Bronze, Colonial Gray

### Berger Gutter Shingle

3' pcs, 20 pcs/box  
part # 395400004



For 5" & 6"

Available in: Galvanized Coated Steel



## REVERSE BEAD HALF ROUND GUTTER SECTIONS

Packaged 5 Units/Box

6" x 10'  
part # 2166051890

6" x 20'  
part # 2166052XXX



Available in: 16 oz. Solid Copper

Available in: 26 Traditional, 1 Duel Tone®, 3 Armor Tough®, 16 oz. Solid Copper, 26 ga. Galvalume Plus Steel

## END CAPS FOR HALF ROUND

Packaged 25 Units/Box

6" Right or Left  
right - part # 226603XXX  
left - part # 226605XXX



Available in: 26 Traditional, 1 Duel Tone®, 3 Armor Tough®, 16 oz. Solid Copper, 26 ga. Galvalume Plus Steel

## MITERS FOR HALF ROUND

Packaged 20 Units/Box

6", 90°, Strip, O/S or I/S  
O/S - part # 236611XXX  
I/S - part # 236613XXX



6", 45°, Bay, O/S or I/S  
O/S - part # 236631XXX  
I/S - part # 236633XXX



Available in: 26 Traditional, 1 Duel Tone®, 3 Armor Tough®, 16 oz. Solid Copper, 26 ga. Galvalume Plus Steel

## OUTLETS FOR HALF ROUND

Packaged 50 Units/Box

3" Round  
part # 265364XXXX



4" Half Round  
part # 265444XXXX



Available in: White, Solid Copper, Galvanized Steel

Available in: 30° White, Black, Solid Copper, Galvanized Steel

## BLACK MAX® MINI PUNCH PAK FOR HALF ROUND

4" Half Round  
10 Outlets  
part # 2654448004



Includes: Punch, 1 1/2" Hole Saw, 1/4" Driver Power Bit, Outlets

## GUTTER WEDGES FOR REVERSE BEAD HALF ROUND

Gutter Bumper® HR  
100 pcs/box  
part # 2928660XXX



Available in: 30° White, Black, 16 oz. Solid Copper, 26 ga. Galvalume Plus Steel

T-Wedge for 6"  
50 pcs/bag  
part # 292966099



Available in: Aluminum

## REVERSE BEAD HALF ROUND INTERNAL HANGERS

**5000 Series w/Strap for 6"**  
100 pcs/box  
part # 2450611XXX



Available in: Brass, Galvanized Steel

**5100 Series w/Wedge for 6"**  
100 pcs/box  
part # 2450621XXX



Available in: Aluminum, Solid Copper, Stainless Steel

**5300 Series w/Wedge for 6" Copper**  
100 pcs/box  
part # 2453661890



Available in: Solid Copper

**5400 Series w/Wedge for 6" Aluminum**  
100 pcs/box  
part # 2454661099



Available in: Aluminum

## HALF ROUND EXTERNAL HANGERS

**6" #10 Combo w/Spring**  
50 pcs/box  
part # 255004XXX



Available in: White, Brown, Dark Bronze, Solid Copper, Galvanized Steel

**6" Circle w/Spring, Nut & Bolt**  
50 pcs/box  
part # 255224XXX



**Extra Spring**  
50 pcs/box  
part # 255226XXX



Available in: White, Brown, Dark Bronze, Brass, Galvanized Steel

**#6 Shank for OG Crown Molding**  
50 pcs/box  
part # 255106XXX



Available in: Solid Copper, Galvanized Steel

**#10 Shank for Flat Fascia Mounting**  
50 pcs/box  
part # 255110XXX



**#25 Shank Sheeting 1/2 Pitch**  
50 pcs/box  
part # 255115XXX



**#11 Shank Exposed Rafter 1/3 Pitch**  
50 units/box  
part # 255111XXX



**#12 Shank Sheeting 1/3 Pitch**  
50 pcs/box  
part # 255112XXX



**7" Extension**  
50 pcs/box  
part # 255117XXX



**#30 Shank Adjustable Pitch w/Nut & Bolt**  
50 pcs/box  
part # 255116XXX



Available in: White, Brown, Dark Bronze, Solid Copper, Galvanized Steel

**6" Cast Bracket**  
20 units/box  
part # 255371XXX



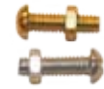
Available in: Aluminum, Brass

**6" Stamped Bracket**  
25 units/box  
part # 255372XXX



Available in: White, Royal Brown, Dark Bronze, Solid Copper, Galvalume Plus Steel

**Extra Bolt w/Nut #10/24 x 3/4"**  
50 units/box  
part # 255228XXX



Available in: Brass, Galvanized Steel

**Bolt w/Nut, #8 x 1"**  
100 units/box  
part # 255382961



Available in: Stainless Steel

**Lag Bolt, 1/4" x 2 1/2"**  
100 units/box  
part # 255383961



**Lag Bolt, 4"**  
100 units/box  
part # 255384961



**Wrap Around w/Strap for 6"**  
50 units/box  
part # 2450631XXX



Available in: Solid Copper, Galvanized Steel

**Bar w/Rod for 6"**  
50 units/box  
part # 2450641XXX



## RAIN BARRELS

Packaged 1 Unit/Box

### SpringSaver 50

part # 6411005XXX



004 Black



063 Terra Cotta



062 Deep Green



064 Gray



065 Oak Wood



066 Beige

### RainSaver 54

part # 6410508XXX



060 Moss Green



061 Balsam Green



063 Terra Cotta



### Daisy Chain T for RainSaver 54

part # 6490550200



## DOWNSPOUT DIVERTERS

### Rectangular Downspout Diverter System

part # 6490050200



### Round Downspout Diverter System

part # 6490050300



### Diverter Selector Valve

part # 6490060100



## SPLASH BLOCKS

### Plastic, Slate, 10" x 21"

10 units/box

Gray - part # 612100014

Tan - part # 612100017



### Concrete, 11" x 18"

80 units/pallet

Gray - part # 611115014



### Concrete, 12" x 12"

100 units/pallet

Gray - part # 611110014



## TOUCH-UP PAINT

**Packaged 12 Units/Box**

**Brush-On Paint, 0.6 oz.**  
part # 581006XXX



Available in: 26 Traditional, 1  
Duel Tone®, 3 Armor Tough®

**Spray-On Paint, 12 oz.**  
part # 582160XXX



Available in: 26 Traditional, 3 Armor Tough®

## SEALANT - NITRILE RUBBER BASE

**Packaged 24 Units/Box**

**Rusco PSCG, 1/10 Gallon**  
part # 591141014



**Rusco PSCG-HV, 1/10 Gallon**  
part # 591142014



Available in: Gray

## SEALANT - TRIPOLYMER BASE

**Packaged 24 Units/Box**

**Geocel 2320, 1/10 Gallon**  
part # 593320XXX



Available in: White, Gray, Clear

**Geocel 2321, 5 oz. Tube**  
part # 593321001



Available in: White

## SEALANT - SILICONE BASE

**Packaged 24 Units/Box**

**NOVAFLEX GS20115, 10.3 oz.**  
part # 594115014



Available in: Gray

**NOVAFLEX GS150, 10.3 oz.**  
part # 594150099



Available in: Clear

*Sealant does not spoil potable water.  
Water running over sealant into a rain  
barrel or yard will not become toxic.*

## SEALANT - SBR RUBBER BASE

**Packaged 24 Units/Box**

**OSI GS121, 1/10 Gallon**  
part # 592121001



Available in: White

**OSI GS125, 5 oz. Tube**  
part # 592125001



## SOLDER

**Solder Bar, 50/50**  
1 lb.  
part # 599110014



**Solder Wire Roll, 50/50**  
5 lb./25 lb.  
5 lb. - part # 599120014  
25 lb. - part # 599130014



**Flux, Stay Clean**  
4 oz./16 oz.  
4 oz. - part # 599191099  
16 oz. - part # 599192099



## RIVETS #42 X 1/8"

Packaged 100 Units/Box

**Aluminum, Painted**  
part # 521421XXX



**Steel, Zinc Plated**  
part # 521421905



**Solid Copper Barrel,  
Copper Plated Mandrel**  
part # 521421890



Available in: 25 Traditional (Excludes 80° White), 3 Armor Tough®

## #8 SCREWS

**1/4" Hex Head  
1/2" Black Ruspert Painted**  
100 ct. - part # 511211XXX  
1000 ct. - part # 511212XXX



**1/4" Hex Head  
1/2" Zinc Plated**  
100 ct. - part # 511211905  
1000 ct. - part # 511212905  
15,000 ct. - part 511218905



**1/4" Hex Head  
1/2" Copper Plated Stainless Steel**  
100 ct. - part # 511211967



**1/4" Hex Head  
3/4" Zinc Plated**  
100 ct. - part # 511221905  
1000 ct. - part # 511222905



Available in: 25 Traditional (Excludes 80° White), 1 Duel Tone®, Galvalume Gray

**1/4" Hex Head  
1" Zinc Plated**  
100 ct. - part # 511231905  
1000 ct. - part # 511232905



**1/4" Hex Head  
1 1/2" Zinc Plated**  
100 ct. - part # 511241905  
1000 ct. - part # 511242905  
5000 ct. - part # 511243905



**1/4" Hex Head  
2" Zinc Plated**  
100 ct. - part # 511251905  
1000 ct. - part # 511252905



## SENOX SPEEDMASTER® SCREWS

Packaged 250 Units/Box

**#10 x 1 1/2" No Washer  
Black Ruspert Finish**  
part # 513042904



**#10 x 1 1/2" With Washer  
Black Ruspert Finish**  
part # 513142904



**#10 x 2" No Washer  
Black Ruspert Finish**  
part # 513052904



**#10 x 2" With Washer  
Black Ruspert Finish**  
part # 513152904



**#10 x 1 1/2" With Washer  
Stainless Steel**  
part # 513142961



**#10 x 2" With Washer  
Stainless Steel**  
part # 513144961



## NAILS, DRIVE PINS & ANCHORS

**1" Masonry  
Galvanized Steel**  
5 lb. - part # 531412910



**1 1/2" Masonry  
Galvanized Steel**  
5 lb. - part # 531432910



**2" Screwshank  
Zinc Plated Steel**  
5 lb. - part # 532042905  
50 lb. - part # 532043905



**1 1/2" Ringshank  
Copper**  
1 lb. - part # 533231890



**1/4" x 1 1/4" Drive Pin  
Zinc Plated Steel**  
100 ct. - part # 541110905



**#10 1/4" Plastic Anchor**  
100 ct. - part # 541210099



## FLEX-DRAIN® UNDERGROUND DRAINAGE & ADAPTORS

Packaged 1 Unit/Box

**FLEX-Drain® 4" x 12' Perforated Pipe**  
part # 622512004



**FLEX-Drain® 4" x 25' Solid Pipe**  
part # 622516004



**FLEX-Drain® 4" Coupler**  
part # 622520004



**FLEX-Drain® 4" Flexible T/Y**  
part # 622525004



**FLEX-Drain® 2" x 3" x 4" Downspout Adapter**  
part # 622522004



**FLEX-Drain® 3" x 4" x 4" Downspout Adapter**  
part # 622524004



Available in: Black

## HDPE DRAINAGE & ADAPTORS

Packaged 1 Unit/Box

**4" T, HDPE**  
part # 622457004



**4" Y, HDPE**  
part # 622463004



**4" Elbow 90°, HDPE**  
part # 622453004



**4" Endcap, HDPE**  
part # 622459004



**4" Internal Coupler, HDPE**  
part # 62246700



**4" Grate, PVC**  
part # 622813010



**Flex Pipe, HDPE**  
**4" x 10' Section, Corrugated**  
**4" x 100' Roll, Corrugated**  
Section - part # 622444004  
Roll - part # 622443004



**Reducer, HDPE**  
**4" x 3", 6" x 4"**  
4" - part # 622473004  
6" - part # 622471004



**Pop Up Emitter, PVC 4", 6" Adapter, 4" PVC to 4" Flex**  
4" - part # 622841010  
6" - part # 622843010  
Adapter - part # 622845004



Available in: Black

## UNIVERSAL DRAINAGE & ADAPTORS

Packaged 1 Unit/Box

**2" x 3" DS to 4" Universal**  
part # 623022004



**3" x 4" DS to 4" Universal**  
part # 623024004



**2" x 3" DS to 4" PVC**  
part # 622894001



**3" x 4" DS to 4" PVC**  
part # 622896001



Available in: White

Available in: White

## AVIATION SNIPS

**Max 2000, Left**  
part # 891M2001



**Max 2000, Right**  
part # 891M2002



**Max 2000, Straight**  
part # 891M2003



## OFFSET SNIPS

**Max 2000, Left**  
part # 891M2006



**Max 2000, Right**  
part # 891M2007



## REGULAR PATTERN SNIPS

**Regular Pattern Snips, 9"**  
part # 891M9



## STRAIGHT SNIPS

**Straight Snips, 12"**  
part # 891M12N  
part # 891M12A



**Straight Snips, 14"**  
part # 891M14N  
part # 891M14A



## CIRCULAR "DUCKBILL" SNIPS

**Circular "Duckbill" Snips, 10"**  
part # 891MD10



**Circular "Duckbill" Snips, 12"**  
part # 891MD12



## COMBINATION SNIPS

**Combination Snips, 12"**  
part # 891MC12N  
part # 891MC12A



**Replacement Blade**  
part # 891MC12NRB  
part # 891MC12ARB

**Combination Snips, 14"**  
part # 891MC14N  
part # 891MC14A



**Replacement Blade**  
part # 891MC14NRB  
part # 891MC14ARB

## END CAP CRIMPERS

**Snap Lock Punch**  
part # 894SL1R



**Adjustable Snap Lock Punch**  
part # 894SL2R



## DOWNSPOUT CRIMPERS

**Single Blade**  
part # 894SC1



**3-Blade**  
part # 894SC3R



**5-Blade**  
part # 894C4R





## HAND SEAMERS

**3"**  
part # 894S2R



**Offset, 3"**  
part # 894S3R



**6"**  
part # 894S6R



**Tool Replacement Spring**  
part # 8945018



## DRIVERS, LEVELING & CAULKING

**Square Drive, #1 Recess**

**1"** - part # 895SQ1100  
**2"** - part # 895SQ1200  
**2 3/4"** - part # 895SQ1275  
**3 1/2"** - part # 895SQ1350  
**6"** - part # 895SQ1600



**Magnetic Bit Holder, 1/4"**  
part # 895MBH14



**Nut Driver Extension, 6"**  
part # 895BHE6



**Nut Driver, 1/4"**

**1 3/4"** - part # 895MSH14  
**2 9/16"** - part # 895MSHL14  
**4"** - part # 895MSHML14



**Torpedo Level, 9"**  
part # 898L9



**Kabonger, Slant Fin**  
part # 89716900



**Malco 6"** - part # 895MSHXL14  
**Qualtool 6"** - part # 895MSHL146  
**8"** - part # 895MSHL148

**Hand Riveter, Economy**  
part # 896CR18



**Vampire T-Bar Tool**  
part # 89717232



**Caulking Gun**  
part # 898CG10



## CUTTING & DRILLING

**Hole Saw Pilot Bit**  
part # 892HSB



**Hole Saw 2 3/8"**  
part # 892H38



**Hole Saw 2 3/4"**  
part # 892H44



**ProTouch Combi-Saw**  
part # 892218HP300



**12" 32 TPI Hacksaw Blade**  
part # 89220146V232HE



**Wax Stick, 1 lb., Push Tube**  
part # 899WAX



**#30 Double Ended Bit 1/8"**  
part # 896NDE30



**Grease Crayon, White, .43 oz.**  
part # 899WLB2



## LADDER ACCESSORIES

**Ladder Max**  
part # 898162100



**Ladder Guards**  
part # 898165510



**Ladder Max Multi-Pro**  
part # 898162110



## MISCELLANEOUS ACCESSORIES

**Wasp Spray, 20 oz.**  
part # 899WASP



**Trough Mate**  
part # 898TM614



**Extension Cord, 50', 10 ga.**  
part # 898ECORD50



TOOLS

## DEFLECTORS

**Packaged 1 Unit/Box**

**Cast Ornamental, Outside**  
part # 299580XXX



**Cast Ornamental, Inside**  
part # 299590XXX

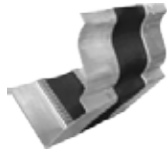


*Available in: Chromated Aluminum, Brass*

## JOINTS

**Expansion Joints for K-Style 5", 6"**

1 unit/box  
5" - part # 293305099  
6" - part # 293306099



*Available in: Aluminum*

**Slip Joints for 6" Half Round**

50 units/box  
part # 299106XXX



*Available in: 16 oz. Solid Copper, 26 ga. Galvalume Plus Steel*

## RAIN CHAINS

### Rain Chain

1 ft. consists of 5 links  
part # 494910XXX



### Flower, for Rain Chain

1 unit/box  
part # 494930XXX



Available in: Chromated Aluminum, Brass

### Hanger Kit, for Rain Chain

1 unit/box  
K-Style 5" - Galvanized Steel, Copper Plus  
part # 495015XXX

K-Style 6" - Galvanized Steel, Copper Plus  
part # 495016XXX

K-Style 7" - Aluminum  
part # 495017961

HR 6" - Aluminum, Solid Copper  
part # 495026XXX



K-Style 5"



Half Round 6"

### Hammered Cup

part # 494021890

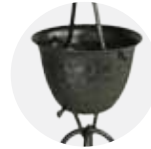
Available in: Solid  
Copper



### Hammered Cup - Painted Aluminum

part # 494021XXX

Available in Black,  
Beaver Brown, and  
Dark Bronze



### Gutter Reducer Adaptor - Aluminum

part # 494111099

Available in Aluminum



## SPECIAL ORDER RAIN CHAINS

### Packaged 1 Unit/Box

#### Lily

part # ON494001890



#### Hibiki

part # ON494003890



#### Bell Cup

part # ON494005890



#### Bamboo

part # ON494007890



#### Sundrop

part # ON494009890



#### Funnel

part # ON494011890



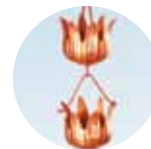
#### Tulip

part # ON494013890



#### Flowerama

part # ON494015890



#### Butterfly

part # ON494017890



#### Juno

part # ON494019890



#### Tara Cup

part # ON494023890



#### Large Tear Drop Cup

part # ON494025890



#### Lotus Cup

part # ON494027890



#### Midori

part # ON494029890



#### Hammered Eastern Cup

part # ON494031890



Available in: Solid Copper

## SPECIAL ORDER RAIN CHAINS

Packaged 1 Unit/Box

**Harmony Cup**

part # ON494033890



**Heirloom Cup**

part # ON494035890



**Umbrella Cup**

part # ON494037890



**Curl Cup**

part # ON494039890



**Royale**

part # ON494041890



**Cascading Leaves**

part # ON494043890



**Ring**

part # ON494045890



**Tear Drop**

part # ON494047890



**Diamond**

part # ON494049890



**Cascading Butterfly**

part # ON494051890



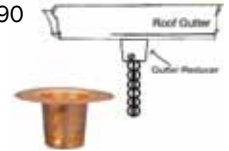
**Traditional Link**

part # ON494053890



**Gutter Reducer Adaptor**

part # ON494111890



Available in: Solid Copper

RAIN CHAINS

## CONDUCTOR HEADS

Packaged 1 Unit/Box

**Decorative**

3" & 4" Oval Outlet

3" - part # 441201XXX

4" - part # 441203XXX



**Fleur-de-lis Emblem**

part # 449120XXX



**Plain**

2" x 3" & 3" x 4" Rectangle Outlet

2" x 3" - part # 441005XXX

3" x 4" - part # 441006XXX



Available in: 26 Traditional, 1 Duel Tone®, 3 Armor Tough®, 16 oz. Solid Copper, 26 ga. Galvalume Plus Steel

Available in: Aluminum, Brass

Available in: 30° White, 16 oz. Solid Copper, 26 ga. Galvalume Plus Steel

**Ornamental**

3" & 4" Round Outlet

3" - part # 442008XXX

4" - part # 442009XXX



**Basic**

4" Round Outlet

part # 441603001



Available in: 16 oz. Solid Copper, 26 ga. Galvalume Plus Steel

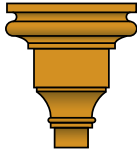
Available in: 30° White

## SPECIAL ORDER ARCHITECTURAL CONDUCTOR HEADS

Packaged 1 Unit/Box

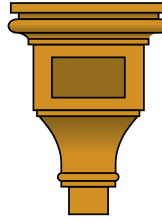
### Carlisle

3" & 4" Round Outlet  
3" - part # ON441708890  
4" - part # ON441709890



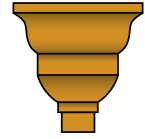
### Churchill

3" & 4" Round Outlet  
3" - part # ON441808890  
4" - part # ON441809890



### Essex

3" & 4" Round Outlet  
3" - part # ON441908890  
4" - part # ON441909890



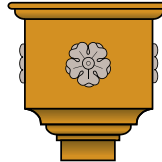
### Heath

3" & 4" Round Outlet  
3" - part # ON442108890  
4" - part # ON442109890



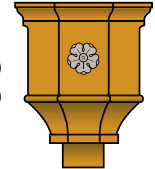
### Windsor

3" & 4" Round Outlet  
3" - part # ON442208890  
4" - part # ON442209890



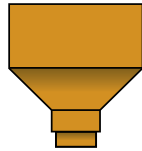
### Royal

3" & 4" Round Outlet  
3" - part # ON442308890  
4" - part # ON442309890



### Industrial

3" & 4" Round Outlet  
3" - part # ON442408890  
4" - part # ON442409890



Available in: Solid Copper

## SPECIAL ORDER COLOR MATCHED CONDUCTOR HEADS

Packaged 1 Unit/Box

### Over-Flow

2 3/4" Round & 4" Oval Outlet  
Aluminum  
2 3/4" - part # ON441211000  
4" - part # ON441213000  
Copper  
2 3/4" - part # ON441211890  
4" - part # ON441213890



### Armor

2 3/4" Round & 4" Oval Outlet  
Aluminum  
2 3/4" - part # ON443001000  
4" - part # ON443003000  
Copper  
2 3/4" - part # ON443001890  
4" - part # ON443003890



### Small Shelby

2 3/4" Round & 4" Oval Outlet  
Aluminum  
2 3/4" - part # ON443101000  
4" - part # ON443103000  
Copper  
2 3/4" - part # ON443101890  
4" - part # ON443103890



### Large Shelby

2 3/4" Round & 4" Oval Outlet  
Aluminum  
2 3/4" - part # ON443111000  
4" - part # ON443113000  
Copper  
2 3/4" - part # ON443111890  
4" - part # ON443113890



Available in: 26 Traditional, 1 Duel Tone®, 3 Armor Tough®, 16 oz. Solid Copper

Additional styles of Special Order Color are available,  
contact your Senox Customer Representative  
or Senox Branch for more information

## SENOX BARRACUDA® GUTTER MACHINES

**5" K-Style**  
part # 81112001501

**6" K-Style**  
part # 81112001601

**7" K-Style**  
part # 81112001701

**6" Reverse Bead Half Round**  
part # 81112016601

**5"/6" Combo K-Style**  
part # 81112001511

**6"/7" Combo K-Style**  
part # 81112001621



## SENOX BARRACUDA® XL GUTTER MACHINES

**XL 5" K-Style**  
part # 81112001502

**XL 6" K-Style**  
part # 81112001602

**XL 5"/6" Combo K-Style**  
part # 81112001512



## SENOX BARRACUDA® GUTTER MACHINE OPTIONS

### FRONT PULL GUILLOTINE

**5" & 5"/6" Combo**  
part # 8111300151

**7" & 6"/7" Combo**  
part # 8111300172

**6" & 5"/6" Combo**  
part # 8111300161

**6" Half Round**  
part # 8111301660

**6" & 6"/7" Combo**  
part # 8111300162



### END PLATE (NO SHEAR)

**5" & 6" & 5"/6" Combo**  
part # 8111350151

**7" & 6"/7" Combo**  
part # 8111350172

**6" Half Round**  
part # 8111351660

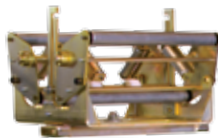


### FULL COIL CRADLE MACHINE MOUNT

**5" & 6" & 5"/6" Combo**  
part # 811140151

**7" & 6"/7" Combo**  
part # 811140172

**6" Half Round**  
part # 811140660



### CRADLE W/SINGLE SCUFF BAR & SIDE ROLLER ASSEMBLY

part # 81904001



### SPOOL W/SHAFT

**5" & 6" & 5"/6" Combo, 6" HR**  
part # 811160151

**7" & 6"/7" Combo**  
part # 811160172



### UPRIGHT TURNSTILE

**5" & 6" & 5"/6" Combo**  
part # 811150151

**7" & 6"/7" Combo**  
part # 811150172

**6" Half Round**  
part # 811150660



### TRANSFER BAR SET

**Fits All Sizes**  
part # 811165001



### STANDARD RUN OUT STAND W/ADJUSTABLE LEG

**5" & 6" & 5"/6" Combo, 6" HR**  
part # 811180100

**7" & 6"/7" Combo**  
part # 811180107



### DELUXE RUN OUT STAND W/ADJUSTABLE LEG

**5" & 6" & 5"/6" Combo, 6" HR**  
part # 811180130



### MACHINE STAND RISER PAD, TALL

**Fits All Machines**  
part # 811190001



### SIDE ROLLER ASSEMBLY FOR CRADLE

part # 81904505



### TRACKER I CONTROLLER

part # 81859501





## A

Accessories, Downspout [9](#)  
 Accessories, Ladder [22](#)  
 Accessories, Miscellaneous [22](#)  
 Adaptors, Underground Drainage [19](#)  
 Anchors, Nails & Drive Pins [18](#)  
 Aviation Snips [20](#)

## B

Barracuda Gutter Machines, Senox [26](#)  
 Barracuda Gutter Machine Options, Senox [27](#)

## C

Caulking, Drivers & Leveling [21](#)  
 Circular "Duckbill" Snips [20](#)  
 Coil, Seamless Gutter [5](#)  
 Combination Snips [20](#)  
 Conductor Heads [24](#)  
 Conductor Heads, Special Order [25](#)  
 Copper Flat Sheets, Solid [7](#)  
 Crimpers, Downspout [20](#)  
 Crimpers, End Cap [20](#)  
 Cutting & Drilling [21](#)

## D

Deflectors [22](#)  
 Downspout Accessories [9](#)  
 Downspout Crimpers [20](#)  
 Downspout Drive, Rack & Key [9](#)  
 Downspout Hangers [10](#)  
 Downspouts, Rectangular [8](#)  
 Downspouts, Round [8](#)  
 Drainage & Adaptors [19](#)  
 Drilling & Cutting [21](#)  
 Drip Cap [7](#)  
 Drip Edge [7](#)  
 Drive Pins, Anchors & Nails [18](#)  
 Drivers, Leveling & Caulking [21](#)  
 Duckbill Snips, Circular [20](#)

## E

Elbows, Rectangular [8](#)  
 Elbows, Round [9](#)  
 End Cap Crimpers [20](#)  
 End Caps for Half Round [14](#)  
 End Caps for K-Style [5](#)  
 Expansion Joints for K-Style [22](#)  
 External Hangers, Half Round [15](#)

## F

Ferrules [11](#)  
 Flashing [7](#)  
 Flat Sheets, Solid Copper [7](#)  
 FLEX-Drain Underground Drainage & Adaptors [19](#)

## G

Geocel Sealant [17](#)  
 Gutter Bumper HR [14](#)  
 Gutter Bumper SB [7](#)  
 Gutter Coil, Seamless [5](#)  
 Gutter Guard, Aluminum Expanded Wire [12](#)  
 Gutter Guard, Louvered [13](#)  
 Gutter Guard, Perforated [12](#)  
 Gutter Guard, Powder Coated Expanded Wire [12](#)  
 Gutter Guard, Solid [13](#)  
 Gutter Guard, Stainless Steel Metal Mesh [13](#)

Gutter Machine Options, Senox Barracuda [27](#)  
 Gutter Machines, Senox Barracuda [26](#)  
 Gutter Sections, K-Style [7](#)  
 Gutter Sections, Reverse Bead Half Round [14](#)  
 Gutter Wedges for K-Style [7](#)  
 Gutter Wedges for Reverse Bead Half Round [14](#)

## H

Half Round External Hangers [15](#)  
 Half Round Gutter Sections, Reverse Bead [14](#)  
 Half Round Internal Hangers, Reverse Bead [15](#)  
 Hand Seamers [21](#)  
 Hangers, Downspout [10](#)  
 Hangers, K-Style Internal [10, 11](#)  
 Hangers, Reverse Bead Half Round Internal [15](#)  
 Hangers, Half Round External [15](#)

## I

Internal Hangers, Reverse Bead Half Round [15](#)  
 Internal Hangers, K-Style [10, 11](#)

## J

Joints [22](#)

## K

K-Style Internal Hangers [10, 11](#)  
 K-Style Gutter Sections [7](#)

## L

Ladder Accessories [22](#)  
 Leveling, Caulking & Drivers [21](#)

## M

Mini Punch Pak Flat Bottom Gutter, Black Max [6](#)  
 Mini Punch Pak Half Round, Black Max [14](#)  
 Miscellaneous Accessories [22](#)  
 Mitters for Half Round [14](#)  
 Mitters for K-Style [5](#)

## N

Nails, Drive Pins & Anchors [18](#)

## O

Offsets, Rectangular [8](#)  
 Offsets, Round [9](#)  
 Offset Snips [20](#)  
 OSI Sealant [17](#)  
 Outlets for Flat Bottom Gutter [6](#)  
 Outlets for Half Round [14](#)

## P

Paint, Touch-Up [17](#)  
 Pipe Bands, Downspout Hangers [10](#)  
 Punch Pak Flat Bottom Gutter, Black MAX [6](#)  
 Punch Pak Flat Bottom Gutter, Black MAX Mini [6](#)  
 Punch Pak Half Round, Black MAX Mini [14](#)  
 Punch Replacement Accessories, Black MAX [6](#)

## R

Rain Barrels [16](#)  
 Rain Chains [23](#)  
 Rain Chains, Special Order [23, 24](#)

Rectangular Downspouts [8](#)  
 Rectangular Elbows [8](#)  
 Rectangular Offsets [8](#)  
 Regular Pattern Snips [20](#)  
 Reverse Bead Half Round Gutter Sections [14](#)  
 Reverse Bead Half Round Internal Hangers [15](#)  
 Rivets, #42 x 1/8" [18](#)  
 Round Downspouts [8](#)  
 Round Elbows [9](#)  
 Round Offsets [9](#)  
 Ruscoe Sealants [17](#)

## S

Screws, #8 [18](#)  
 Screws, SpeedMaster® [18](#)  
 Sealant, Nitrile Rubber Base [17](#)  
 Sealant, SBR Rubber Base [17](#)  
 Sealant, Silicone Base [17](#)  
 Sealant, Tripolymer Base [17](#)  
 Seamers, Hand [21](#)  
 Seamless Gutter Coil [5](#)  
 Snips [20](#)  
 Solder [17](#)  
 Solid Copper Flat Sheets [7](#)  
 Special Order Conductor Heads [25](#)  
 Special Order Rain Chains [23, 24](#)  
 Spikes [11](#)  
 Splash Blocks [16](#)  
 Straight Snips [20](#)

## T

Touch-Up Paint [17](#)  
 T-Strap [11](#)  
 T-Wedge for K-Style [7](#)  
 T-Wedge for 6" Reverse Bead Half Round [14](#)

## U

Underground Drainage & Adaptors [19](#)

## W

Wedges for Reverse Bead Half Round, Gutter [14](#)  
 Wedges for K-Style, Gutter [7](#)



**Serving the Seamless Gutter Industry Since 1972**

15409 Long Vista Drive  
Austin, TX 78728

Phone: 866-522-1696  
Fax: 800-295-2702

[www.senox.com](http://www.senox.com)  
[senoxinfo@senox.com](mailto:senoxinfo@senox.com)