



2015 | *S-Class Coupe*



Mercedes-Benz

# *Inherently uninhibited.*

When a car is produced in limited numbers, virtually every other limitation disappears. Throughout their history, the flagship Mercedes-Benz coupes have been unburdened by convention—setting each generation free to explore new worlds of capability, comfort and confidence. For 2015, an all-new S-Class Coupe wraps unrivaled engineering and craftsmanship in a pillarless coupe body whose invisible strengths are openly seductive. Once again, the art of driving has a new state of the art.

**S 550 4MATIC.** A pair of turbos and AIRMATIC® suspension turn pressurized air into effortless performance. A 449-hp V-8 makes its tracks via 4MATIC® all-wheel drive. Its pillarless profile and Panorama roof give the cabin its own distinctive air. Its ambience is distinguished even further by the thoughtfulness, innovation, and attention to every detail that envelop its four passengers.

**S 63 AMG 4MATIC.** Its stunning presence and the staggering torque of its hand-built 577-hp AMG biturbo V-8 are only a prologue. As in any great story, it's all in the delivery—a sensation its AMG Performance 4MATIC brings to life from takeoff to the tightest turn. And its cockpit controls and appointments can make every 3.9-second rush to 60 mph<sup>1</sup> feel like a new chapter in driving history.

**S 65 AMG.** Superlative is too simple a word for a coupe that's crafted with such impeccable detail, to deliver such incomparable results. Wielding the 621 hp and 738 lb-ft of torque of its handcrafted AMG biturbo V-12 inspires a euphoria matched by few cars—not just today but in all of driving history. Yet its mightiness is never unwieldy, with an innovative suspension that can slalom like a skier. And it's all wrapped around a cabin that'll entice your senses in ways no coupe ever has.







55

YEARS OF  
UNINTERRUPTED  
PASSION

S 550 4MATIC shown on cover with Palladium Silver metallic paint, and optional Sport Package with 20" AMG multispoke wheels. S 550 4MATIC shown above with Emerald Green metallic paint, and optional *designo* Saddle Brown/Black Exclusive Nappa leather upholstery, and Driver Assistance and Premium Packages. Please see endnotes at back of brochure.



*A work of art,  
yet frameless.*

For more than half a century, Mercedes-Benz has revealed the world to the passengers of its flagship coupe through a pillarless bodystyle. Its unimpeded vistas come from a union of engineering and artistry that's run without interruption for an industry-exclusive 55 years. The most panoramic view, after all, is best achieved from the pinnacle.



S 550 4MATIC shown with Iridium Silver metallic paint, Black Nappa leather upholstery, and optional Sport Package with 20" AMG multi-spoke wheels. Please see endnotes at back of brochure.



Design is often made more beautiful by what's not in plain view. In fashion, it might be the clever concealment of a seam. In furniture, the elegant integration of the structure and hardware can turn an item into an icon. In architecture, it's how the glass area defines both the exterior proportions and the rewards of looking out from inside. For automobiles, the seamless structure of a pillarless hardtop coupe is one reason it's revered as one of the highest forms of car design.

Another reason is the engineering required to bring such a purely romantic notion to reality. In the 1970s, increasing safety requirements for side impacts and rollovers drove all other automakers to abandon the airy elegance created by four retractable windows undivided by visible framework. Mercedes-Benz engineers, however, have as much passion for aesthetics as they do for strength and solidity. And so the design hallmark that debuted on 1961's 220 SE Coupe

not only remained in production, it kept evolving to meet the ever-advancing safety standards that define a Mercedes-Benz. In its newest form, the profile draws sheet aluminum from hood to tail in a seductive sweep of tensed muscle. The new grille of its Sport Package radiates 220 hexagonal chrome pins—each one individually shaped and spaced by the car's designer—around its signature Star. And 100% LED lighting lets the S-Class Coupe scintillate without a single lightbulb.







*Countless stitches,  
yet seamless.*

The attention to artistic detail in the S-Class Coupe cabin is exceeded only by its workmanship. Virtually every element is rendered in three dimensions, enveloping all four seats in fluid sculpture. A seemingly infinite number of perfect stitches tailors its Nappa leather. Even its technology integrates seamlessly not just with its design, but with you.



S 550 4MATIC shown with Iridium Silver metallic paint, Crystal Grey/Black Nappa leather, Black Poplar wood trim, and optional Driver Assistance and Premium Packages. Please see endnotes at back of brochure.



Can a car's cabin feel both spacious and intimate at once? In the S-Class Coupe, it always has—now to an even greater degree. The broad horizons provided by its pillarless design and standard Panorama roof bring the light in while inspiring your view out. The seats are contoured individually to cradle each occupant in a personal comfort zone, further defined by a center console that sweeps the full length of the cabin. Every surface is impeccably finished, utilizing rich materials

like hand-finished wood in an exceptional array of choices, metallized switchgear, and hand-fitted Nappa leather whose distinctive stitching distinguishes each of the three models. The sculptural dash wraps into the doors with a flourish of wood that's outlined in polished metal. Circular dash vents please the eye with their design, the hand with their liquid-smooth adjusters, and of course, the body with airflow you can fine-tune from direct to diffused. Employing not a single

lightbulb anywhere in the car, the new S-Class illuminates its cabin with an extensive network of hundreds of LEDs. Seven colors, five dimming levels and four lighting zones let the driver vary the ambience to suit—or even create—any mood. A standard fragrance atomizer can infuse the cabin with subtle aromatherapy. And beyond the standard heated and ventilated front seats, you can also have the steering wheel, front-cabin armrests, and rear seats warmed as well.

# *Milestones per hour, revelations per minute.*

The Mercedes-Benz performance legacy began at history's first auto race, and it's never stopped racing ahead. With innovations that have helped make all automobiles swifter, smoother and safer, the S-Class is a moving showcase of breakthroughs that continue to break new ground: The multivalve engine, raised to new peaks of power and efficiency. Fuel injection, evolved to molecular precision. All-wheel drive, cross-trained to its most gripping and most graceful footwork. And numerous advancements in cornering, control and confidence, all advanced yet again. Whether each of them thrusts the S-Class a generation ahead, or hones its response by mere milliseconds, together they help keep its driver well ahead of the curve—even on a straightaway.

**Quicker thinking.** A 449-hp biturbo V-8 thrusts the S 550 4MATIC Coupe to 60 mph in 4.5 seconds.<sup>1</sup> High-pressure Direct Injection atomizes fuel into an ultrafine spray, and can adjust it within a millisecond. In the very same timeframe, rapid-multispark ignition can fire each spark plug up to four times, to maximize torque while minimizing waste. As you wait at red lights or in traffic, ECO Start/Stop can automatically shut off the engine, helping save fuel and emissions. When you're ready to go, the engine instantly and seamlessly restarts.

**Tenacious technology.** The S 550's standard 4MATIC<sup>®</sup> all-wheel drive automatically sends the engine's torque to the tires with the best grip—whether that's all four of them or even just one. Nimble, lightweight and fuel-efficient, 4MATIC enhances handling in any season.<sup>2</sup>

**Swift shifting.** The 7-speed automatic transmission is sporty, smooth and efficient. Its electronic selector and shift paddles let you control all gear changes with your hands on the steering wheel. At any time, a tap of the paddles offers instant manual control. Pushbutton Sport and Comfort modes let you tailor the automatic shift patterns to your driving mood of the moment.

**Perfectly poised.** In the S 550's semi-active AIRMATIC<sup>®</sup> suspension, precise sensors and pressurized air spring-struts team up for an ideal balance of silky and sharp. Along with Comfort and Sport modes, its 4-wheel level control adapts to varying loads and roads. Speed-based lowering<sup>3</sup> enhances highway stability and efficiency.

**Rolling art.** The standard 19" triple 5-spoke alloys are one of five S 550 wheel choices.<sup>4</sup> Optional 19" and 20" wheels include two AMG<sup>®</sup> designs in the Sport Package.







23

PERFORMANCE  
BREAKTHROUGHS

S 550 4MATIC shown with Diamond Silver metallic paint, and optional Sport Package with 19" AMG twin 5-spoke wheels, and Driver Assistance and Premium Packages. Please see endnotes at back of brochure.



## *Absolute authority.*

For 47 years, AMG has been creating championship racecars and thoroughbreds for the street. Every trophy earned, and each lesson learned, has shared the same starting line: an engine crafted by the hands of its own master. “One man, one engine” is more than a guiding philosophy—it’s a pedigree of performance that’s evident throughout the car. And it’s a promise made during the rigors of competition that every Mercedes-AMG fulfills even in the routine of a daily commute. The two AMG S-Class coupes may be heirs to a motorsports legacy. But each one summons talents of its own, to conduct itself with unquestioned authority in any arena of driving.





1 MAN

1 ENGINE



S 65 AMG shown with Lunar Blue metallic paint, *designo* Porcelain/Espresso Brown Exclusive Nappa leather, and optional AMG Carbon Ceramic Braking System.





## *Performance purity.*

While it's possible to boost a car's performance by upgrading a few components, that wouldn't fly in Affalterbach, Germany. That's where a Mercedes-AMG is created from the racetrack up, not just to accelerate but to excel in every measure. In the AMG SPEEDSHIFT® transmissions, high-torque/low-friction components and high-speed controls minimize the "power gap" between gears. Powerful brake calipers clench enormous discs that are ventilated, perforated and slotted to better shed heat and speed. And suspensions pair AMG-specific components with exclusive concepts, like the new curve tilting function in the S 65 AMG. Using the cameras of its proactive MAGIC BODY CONTROL®, it can see upcoming curves and actively lean into them for added control, like a motorcyclist or slalom skier.







3.9

SECONDS  
0-60 MPH

S 63 AMG 4MATIC shown with optional *designo* Diamond White paint, 20" AMG forged 10-spoke wheels in Black, red-painted brake calipers, and Driver Assistance Package. Please see endnotes at back of brochure.



# Driven by detail.

Crowning the engine of an S 63 AMG or S 65 AMG is a plaque bearing the signature of the man whose two hands carefully brought it to life. The same passion for exactitude courses throughout the vehicle, from its racing-derived chassis, drivetrain and bodywork, to its exclusive instruments, controls and appointments. The impeccable intensity of AMG engineering and craftsmanship puts a world of performance at your feet—and more importantly, directly into your hands.

**S 63 AMG 4MATIC.** A handcrafted AMG biturbo V-8 achieves staggering peaks of output: 577 hp and 664 lb-ft of torque. A lithium-ion battery and the strategic use of carbon fiber in its predominantly aluminum body help save nearly 130 lbs, even with added standard equipment. The 7-speed AMG SPEEDSHIFT® MCT transmission offers three drive programs. In its paddle-shifted Manual mode, it can perform upshifts in 100 milliseconds, and precisely rev-match every downshift.

AMG Performance 4MATIC® all-wheel drive features a 33:67 front/rear torque split and torque-vectoring ESP® Curve Dynamic Assist.<sup>2</sup> Together they transmit power to the pavement so effectively that 60 mph arrives in just 3.9 seconds.<sup>1</sup> And yet they preserve the agility and driving fun for which AMG automobiles have long been treasured by enthusiasts.

The AMG Adaptive Sport Suspension sharpens the semi-active, self-leveling AIRMATIC® setup with exclusive AMG calibration and geometry. Sport and Comfort modes let the driver fine-tune the electronically controlled damping, favoring quick feedback or composed fluidity without compromising either.

Please see endnotes at back of brochure.

**S 65 AMG.** Built by hand, the 621-hp biturbo V-12 sends a thundering 738 lb-ft of torque to the rear wheels. New high-speed engine management, multispark ignition, and a 3-mode, 7-speed AMG SPEEDSHIFT PLUS transmission team up to deliver 60 mph in 4.0 seconds flat.

Camera-based MAGIC BODY CONTROL® features AMG calibration and a curve tilting function that's exclusive to the S 65 AMG Coupe. In Sport mode, it's a fully active suspension that generates its own counterforces against pitch, dive and roll. In Comfort mode, it's the first proactive suspension, scanning the road surface ahead for bumps and curves.<sup>5</sup>

**Exquisitely exclusive.** Aggressive AMG bodywork is set off by black and matte silver accents on the S 63, or by brilliant chrome or black on the S 65. Each model wears its own standard 20" AMG® wheel design, or one of several options.<sup>4</sup> Red brake calipers or AMG Carbon Ceramic Brakes are also optional.<sup>6</sup> Their distinctive cabins are AMG-tailored with glove-soft Nappa or *designo* Nappa leather, paired with exotic wood, piano lacquer or carbon fiber. The Affalterbach crest adorns each car's SmartKey remotes. And the unique details of the S 65 AMG include metal AMG door-lock crowns, and headlamps accented with 94 Swarovski® crystals.





**AMG**  
DRIVING PERFORMANCE





# *It can see danger, and see you through it.*

With Intelligent Drive, Mercedes-Benz introduces the next generation of safer driving, and its breakthroughs are genuinely visionary. Multipurpose cameras, multirange radar and a multitude of sensors continually survey your surroundings in six dimensions, including movement and time. An integrated network of systems can help alert you to danger from almost any direction—because they're able to see more at once than the human eye. They can adapt the car's speed, steering, braking and exterior lighting to rapidly changing situations—because they can multitask more effectively. They can even take action autonomously on your behalf—to ease your journey, help protect you, and look out for others, like never before.

*Learn more about the many safety innovations in the S-Class at [MBUSA.com/S](http://MBUSA.com/S)*



## *Camera-based technology helps detect cross-traffic, pedestrians and more.*

While you drive, available multitasking cameras continuously capture a rapid series of images of the environment in front of the car. Using high-speed algorithms, these virtual eyes can recognize other vehicles and pedestrians, and evaluate their movement, helping the various systems of Intelligent Drive respond instantly as they're needed.

Available DISTRONIC PLUS<sup>®</sup> adaptive cruise control<sup>7</sup> uses radar to adapt your set speed in response to the flow of traffic ahead. It can automatically slow down—or even brake to a halt—until your path clears, then resume with just a tap. As you cruise, its Steering Assist feature uses the cameras to help keep you centered in your lane, even in gentle curves.<sup>8</sup> If sensors detect cross-traffic or recognize pedestrians in your path, an alert sounds. The instant you apply the brakes, it can precisely boost braking pressure to the ideal level. And if you fail to heed the alert for a vehicle or pedestrian, PRE-SAFE<sup>®</sup> Brake can initiate braking automatically, to help prevent an impact or reduce its severity.<sup>9</sup>



**Pedestrian Recognition takes action:**  
1. Cameras detect pedestrian ahead.

→ 2. Audible warnings alert driver to urgently apply the brakes.

→ 3. If driver brakes, BAS<sup>®</sup> PLUS instantly increases braking to level needed.

→ 4. If the driver doesn't initiate braking, PRE-SAFE Brake does automatically.





### Radar-based autonomous braking.

When you're driving above 5 mph, new COLLISION PREVENTION ASSIST PLUS uses multirange radar to monitor your speed and distance to the vehicle ahead. If it senses that a collision is likely, it alerts you to brake. As soon as you do, its Adaptive Brake Assist can automatically increase braking to the ideal level.<sup>9</sup> And in certain situations, it can apply the brakes autonomously if you do not respond to an alert.



### Virtual vision for driving after dark.

Available Night View Assist<sup>®</sup> PLUS<sup>7</sup> uses invisible infrared beams to display a supplemental view of the road in the instrument panel. Infrared and thermal imaging helps it identify and point out pedestrians and animals. It can even try to alert pedestrians with a focused flash from the LED headlamps. To make using the system even easier, you can set the display to turn on only when it senses a pedestrian or an animal.<sup>11</sup>



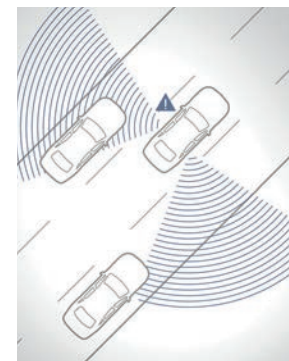
### Brilliance without bulbs.

The S-Class uses efficient, highly effective LEDs for 100% of its lighting—an industry first. Standard active full-LED headlamps—another Mercedes-Benz first—swivel their beams as you steer, to illuminate curves better. Their Adaptive Highbeam Assist progressively varies their range, to put the most light on the road ahead without causing glare for other drivers. They can also help brighten low-speed turns into dark driveways and garages.



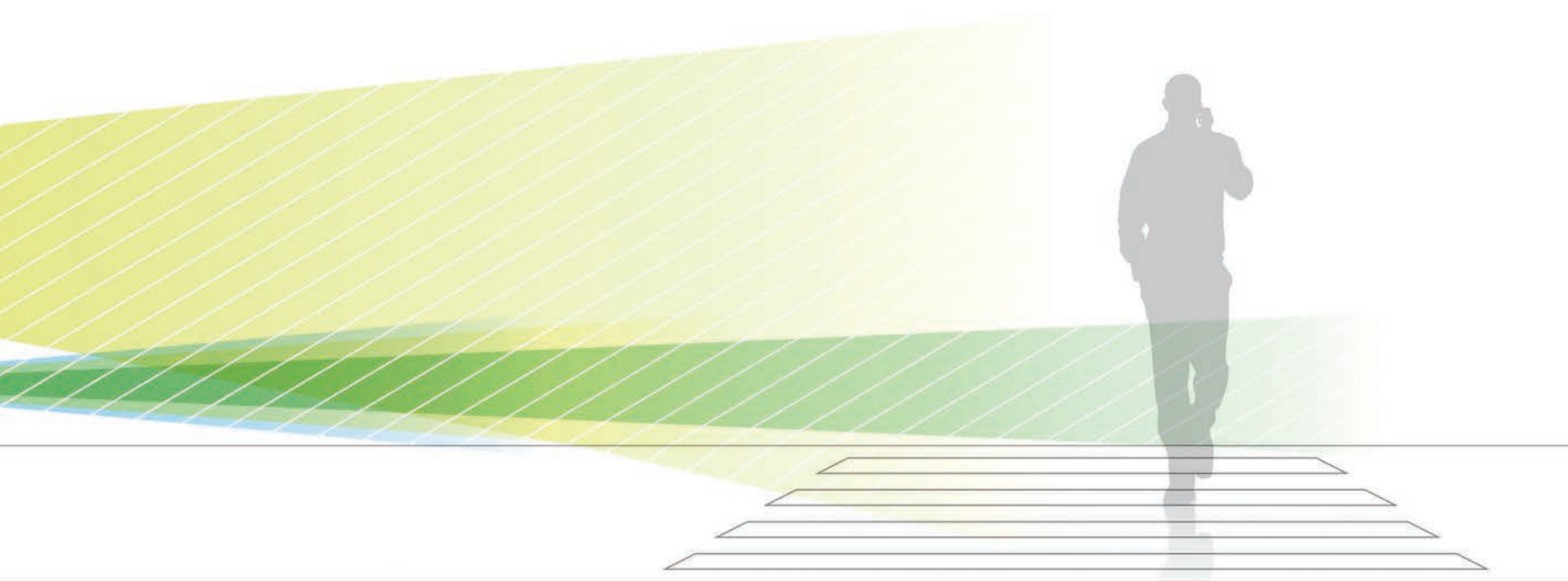
### A better view of what's around you.

A standard rearview camera shows a live view of what's just behind your vehicle on the central in-dash screen. Active steering guidelines help you back smoothly into a parking space. The available Surround View System<sup>7</sup> uses four cameras to create a single live "birds-eye" view of your immediate surroundings. It helps you maneuver more easily in tight spaces, whether you're moving forward or backing up.<sup>12</sup>



### Multilane multitaskers.

Two available systems<sup>7</sup> make highway driving easier. Active Blind Spot Assist can alert you to some unseen vehicles in the adjacent lane.<sup>13</sup> Active Lane Keeping Assist can vibrate the steering wheel if you start to drift across visible lane markings.<sup>14</sup> It can even help detect an oncoming or overtaking vehicle in the next lane. If you disregard the alerts, both systems can gently brake selected wheels to help guide the car back into its lane.



5. Earlier or autonomous braking helps to prevent a collision or reduce its severity.



6. With a collision averted, driver and pedestrian continue on their way. Intelligent Drive continues to look ahead.



S 550 4MATIC shown with Black Nappa leather, and optional *designo* Metallized Ash wood trim, Burmester High-End 3D Surround Sound System and Sport Package.



The image shows the interior of a Mercedes-Benz S-Class Coupe. The dashboard features a large, wide-screen display showing a navigation map and an audio equalizer interface. Below the screen are three circular air vents and a control panel with buttons for 'MENU', 'A/C REST', and 'AUTO'. The dashboard is finished with dark wood trim and Nappa leather. A large, semi-transparent '24' is overlaid on the right side of the dashboard.

# 24

SURROUND-SOUND  
SPEAKERS

*Time invested, time well spent.*

The cockpit of the S-Class Coupe is advanced to a new degree of convenience, without losing touch with its time-honored craftsmanship. Dual high-resolution 12.3" widescreens offer you ever-expanding options in Internet-based apps. Supple Nappa leather and sleek wood are tailored with an eye for detail, and carefully finished by hand. Even its sound systems—which surround you with as many as 24 high-end speakers throughout the cabin—have been created with patience and expertise by Burmester,<sup>®</sup> Germany's most renowned name in handcrafted home audio. And yet you don't need an advanced degree to enjoy it all. With an intuitive touchpad controller, animated menus and voice control, the S-Class handles learning curves as deftly as it negotiates the real ones.





S 550 4MATIC shown with Lunar Blue metallic paint, and optional *designo* Saddle Brown/Black Exclusive Nappa leather, *designo* Black Piano Lacquer wood trim, Burmester High-End 3D Surround Sound System, and Warmth & Comfort Package. Please see endnotes at back of brochure.





*Duality, and individuality.*

It can turn your garage into a modern art gallery, or turn a public roadway into your private getaway. It's a spa that can soothe your senses, and a moving panorama of the world around you. And it's a car whose richest tradition has always been to move modernism ahead. In the 1930s, it was the first coupe expressly built to fly the new Autobahn. In the 1950s, it made Hollywood's stars shine. And now more than ever, it matches style with stamina, and elegance with expedience. The four-seat cockpit of a 2015 S-Class Coupe embraces you with meaningful luxury. Thoughtful technology. And a depth of character you can feel in its soul, and in its every move.

# Everything you never imagined.

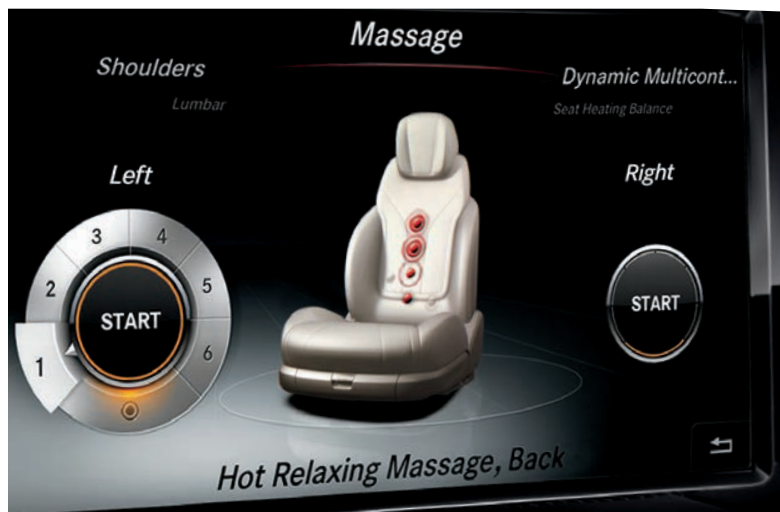
An S-Class can do things you might never have thought possible, and make them feel not just natural but necessary. It can immerse you in euphoric sound. Fill the air with the healthy freshness of a summer storm. Turn pixels, color and motion into awareness and convenience. Listen to your voice, and learn it. Make driving to the spa more rejuvenating than the spa itself. And let the stars sparkle at the flip of a switch. It'll give all of your senses a new sense of well-being.

**High fidelity.** The Burmester® Surround Sound System's 9-channel digital/analog amp feeds 590 watts to 13 high-performance speakers. The available<sup>7</sup> Burmester High-End 3D Surround Sound System's 1,540-watt, 24-channel amplifier drives 24 speakers, including speakers in the ceiling and console, and a trunk-mounted subwoofer with its own 400-watt amp. In every S-Class, award-winning FrontBass® utilizes the car's front body structure as bass enclosures.

**Sky technology.** The standard Panorama roof includes a power internal sunshade. Innovative, optional MAGIC SKY CONTROL® lets you electrically change the glass from dark to see-through.

**Four in first.** It's an S-Class Coupe tradition to offer four seats in first-class comfort, and at the leading edge of luxury. The power front seats include heating, ventilation and memory as standard. The Warmth & Comfort Package<sup>7</sup> adds heating of the spacious rear seats, plus heating of all three front armrests, and a heated, hand-finished wood/leather steering wheel.

**First in comfort.** Available active multicontour seats,<sup>7</sup> first pioneered by the S-Class, offer a multitude of pneumatic adjustments, plus active side support in corners. Their six massage programs, include two rejuvenating "hot stone" treatments, will surely become new favorites.





**Comfort zones.** The climate control offers dual-zone temperature, air distribution and AUTO modes. Variable airflow modes range from diffused for minimal drafts, to focused for greater air from the elegant, exquisitely crafted dash vents. The system's many sensors even help it compensate for directional sunlight, to ensure more consistent comfort throughout the cabin.

**Air quality.** While the S-Class Coupe's exquisite design and all-LED cabin illumination creates an ambience few cars can match, it's air-quality advances are unmatched by any automaker. Its triple filtration of the cabin—dust/pollen and dual activated charcoal filters—help remove many airborne pollutants and even odors. Its new ionizer uses an electrical charge to create the same refreshing effect you feel after a summer storm. The S-Class can purify its cabin air of bacteria, spores and allergens so effectively, it can improve your breathing capacity. And it's the only car in its class certified by the European Centre for Allergy Research Foundation.<sup>15</sup>

**Aromatherapy.** A standard fragrance atomizer can periodically introduce subtle aromas into the cabin, for a feeling of well-being in a new dimension. An LED-backlit vial in the glovebox is offered in a variety of scents, all formulated not to linger on your clothes or the car's interior.

**Navigate the road, or the web.** The 80GB hard-drive navigation<sup>16</sup> features 3D maps, three years of map updates, and three years of SiriusXM Traffic and Weather!<sup>17</sup> The available Cloud-based apps of Mercedes-Benz mbrace<sup>®</sup> bring the Internet to your dash, so you can search via Google,<sup>®</sup> Yelp and other familiar tools. With mbrace, your S-Class is even its own WiFi hotspot.<sup>18</sup>

**Ears to the world.** Virtually unlimited listening starts with local HD Radio<sup>™</sup> stations, nationwide SiriusXM Radio with a 6-month All Access plan trial,<sup>17</sup> and global TuneIn<sup>®</sup> Radio<sup>18</sup>—yet another mbrace app. You can set up alerts for artists and sports teams on SiriusXM, and tag songs for later purchase. Or bring your own music via DVD, SD card, two USB ports, Bluetooth<sup>®</sup> audio streaming,<sup>19</sup> and a 10GB in-dash Music Register. And SPLITVIEW is a front-seat entertainment option that can play a DVD movie on the in-dash screen that only the front passenger can see.<sup>20</sup>

**Eyes on the road.** The available new Head-Up Display can project an 8"-wide high-resolution virtual image a few feet in front of the windshield.<sup>21</sup> Color graphics show your driving speed, the next navigation instruction and more, well within your natural field of vision. The display is adjustable for brightness and height, with its position stored in the driver-seat memory.





**Mode keys.** The COMAND® system makes it easy to select, access, adjust and personalize an enormous number of in-car features—from seating to settings to songs on your smartphone. An arc of keys lets you jump directly to a mode, paralleling the top menu on the in-dash screen.

**Rotary controller.** COMAND's clear, animated on-screen menus use an intuitive "carousel" layout. Turn the knob, and your selection options rotate exactly the same way, with tactile "clicks" adapting to the number of items in each menu.


**Touchpad.** The new fingertip interface responds much like the tablet you use at home, but is easy to master by feel alone. You can swipe left-right or up-down to navigate maps and menus, and pinch to zoom on a map. You can even handwrite letters and numbers on it, with each one shown on-screen and confirmed by the system out loud.

**Quick-access keys.** Three keys on the touchpad let you call up the main audio menu, go back one step, or access your programmable favorites.

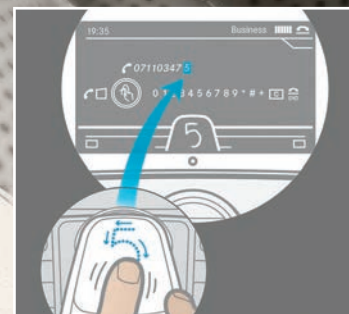
**Drive modes.** A variety of pushbutton driving options surround the COMAND controls, to minimize hand movement. Transmission and suspension Sport modes, ride height, and the ECO Start/Stop system are all easy to adjust, often without taking your eyes off the road.







**Volume and mute.** A thumbwheel control lets the driver or front passenger adjust the volume of whatever mode is in use—audio, a phone call, or a navigation announcement. Push down on the thumbwheel to mute the sound, or to shut off the microphone during a call. The driver can also do all of this from the multifunction steering wheel.



*Easy to reach,  
simple to grasp.*

The new touchpad central controller brings the best features of a touchscreen to a convenient console location where your hand falls naturally. It responds to fingertip gestures using one or two fingers, and even recognizes handwriting. In addition, a rotary controller and dedicated keys offer you multiple input options—so you can use whichever method you prefer for most functions.

# mbrace®

Mercedes-Benz mbrace® can make any trip easier, safer, more productive and more enjoyable.<sup>18</sup> It brings you a world of security and convenience. It can bring the Internet to your dashboard. It connects you to your car, from your smartphone or computer. It even updates over the air.

## *mbrace Package* 6-month trial included

*Advanced features you'll enjoy every day.  
Support you can count on when you need it most.*

### Safety and Security

From Roadside Assistance<sup>22</sup> to antitheft measures to emergency aid, mbrace looks after you, your passengers and your Mercedes-Benz.

- Call for assistance after an accident or in any emergency situation. If an air bag is activated, your Mercedes-Benz can place an SOS call automatically, even if you can't
- Directly connect with Mercedes-Benz Roadside Assistance for help with a dead battery, flat tire or other car trouble
- Get notified if your car's alarm is set off, and let your car's built-in GPS help authorities with stolen vehicle recovery
- If you ever find yourself unable to drive, let an mbrace specialist help arrange alternate transportation home

### Remote Connections to Your Vehicle

Interact with your vehicle's features, and send addresses to its navigation system, from your iPhone, Android or computer.<sup>23</sup>

- Send destinations and even exact routes to your car's COMAND® navigation system from your computer or smartphone
- Locate your vehicle from the Mobile App on your phone when you can't remember where you parked
- Remote-lock and unlock your car's doors
- Sound your car's horn and flash its lights to help you spot it in a crowded parking lot, or to call attention to a hazardous situation

## *Mercedes-Benz Apps* 3-month trial included

**In-Vehicle Internet** *An ever-growing variety of in-car apps, offering Internet-based connections to the interests you enjoy, the information you need, and the world you call your own.*

- Search restaurant and business reviews with Yelp, and navigate directly to them with just a few clicks
- Listen to Internet radio stations from around the globe with TuneIn® Radio
- Create an in-car hotspot to connect up to 4 devices to the Web
- Stay connected to friends with Facebook, and navigate directly to places where they've checked in
- Find and view local Points of Interest with Google™ Local Search with Street View and Panoramio images
- Keep up-to-date on the latest news from around the world
- Follow your favorite stocks through Morningstar®
- Access your Mercedes-Benz Financial Services account
- View local traffic cams in many major metropolitan areas
- Search for hotel rooms by distance and price, and book them, provided by HRS—Hotel Reservation Service
- Check weather locally and around the world
- Compare fuel prices at nearby filling stations
- Check the status of flights and airport conditions
- Look up showtimes at local movie theaters
- Enjoy a variety of music curated by Mercedes-Benz via Mercedes-Benz Radio
- Keep up with your RSS feed and more
- Enjoy even more new apps whenever they become available

## *mbrace PLUS* 3-month trial included

*Personal assistance to make your life easier.  
Helpful ways to look after your loved ones.*

### Personal Concierge

Enjoy virtually unlimited assistance from an actual person with the knowledge and resources to help with almost any request.

- Let an expert Concierge help you stay more productive on the road, or from the Mobile App on your smartphone
- Get expert recommendations and reservations for dining out, tickets to events, and answers to most any question

### Family Driver Monitoring

Let mbrace add to your peace of mind when the secondary drivers in your household use the family Mercedes-Benz.

- Set speed limits and be notified if they're exceeded
- Set up virtual boundaries and be alerted if they're crossed
- Receive an alert if the car is started after curfew
- See where your vehicle's been driven on an online map

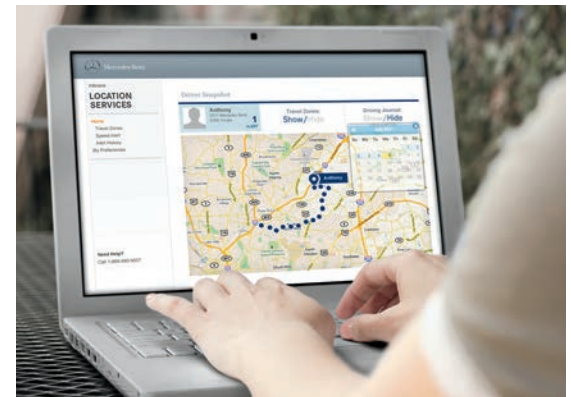
### Advanced Travel Assistance

Keep your eyes on the road with agent-assisted route guidance based on where you are, or plan a trip to somewhere far away.

- Receive spoken assistance in your car with weather and traffic conditions, Point of Interest information, and turn-by-turn driving directions to your destination
- Let your Concierge book and change airline, hotel and rental car reservations from your car or the Mobile App

*For more information and a complete list of mbrace services, visit [MBUSA.com/mbrace](http://MBUSA.com/mbrace)*

Please see endnotes at back of brochure.





# Express yourself.

Genuine Mercedes-Benz Accessories are exclusively engineered to fit your car as well as they fit your life. A wide selection of accessories lets you enhance your coupe's appearance, expand its versatility, or offer it some extra protection in everyday use. From the artful allure of the Illuminated Star and stylish wheels to cargo innovations, they're a great way to make your S-Class unmistakably yours while keeping it genuinely Mercedes-Benz.

See the entire accessory selection at [MBUSA.com/S](http://MBUSA.com/S)



## *Car cover.*

Help protect the finish of your Mercedes-Benz from the elements with a cover that's tailored from breathable Noah® fabric. The UV-resistant, three-layer cover combines an excellent fit with durable construction. (A lock and cable for the cover are also available separately.)

## *Illuminated Star.*

As you drive, LED technology illuminates the Star in the S-Class Coupe grille with a gentle white glow, for a captivating presence on the nighttime road.<sup>24</sup>



## *20" 10-spoke wheels.*

Enhance your car's poise and performance while preserving its precise engineering. Ten spokes, polished to a high-shine finish, each feature a chiseled groove inlaid in contrasting Himalaya Grey paint. Their elegant design and generous size accent the athletic profile of the S-Class Coupe.<sup>4</sup>

## *Cargo area tray.*

Help protect the cargo-area carpeting from spills and dirt with this large tray featuring raised sides. It's form-fitted from durable, easy-to-clean plastic.



## *Load sill protector.*

Help guard the rear bumper and load sill against scratches. The black protector can be connected to the accessory cargo area tray (sold separately) with included fasteners. Folds easily for storage.

## *All-season floor mats.*

Custom-fit black rubber floor liners help keep your carpeting in top condition. Deep channels help to trap water, mud and melting snow. Easy to clean, they come in a set of two for the front footwells.

# Build your own.

MBUSA.com/S

## Option Packages

	S 550 4MATIC	S 63 AMG 4MATIC	S 65 AMG
<b>Premium Package</b>	○	●	●
<ul style="list-style-type: none"> <li>Active multicontour front seats with “hot stone” massage</li> <li>Rapid-heating feature for front seats</li> <li>Surround View System<sup>12</sup></li> <li>Head-Up Display<sup>21</sup></li> </ul>			
<b>Driver Assistance Package</b> <i>Requires Premium Package</i>	○	○	●
<ul style="list-style-type: none"> <li>DISTRONIC PLUS<sup>®</sup> with Steering Assist<sup>8</sup></li> <li>PRE-SAFE<sup>®</sup> Brake with Pedestrian Recognition<sup>8</sup></li> <li>BAS<sup>®</sup> PLUS with Cross-Traffic Assist<sup>8</sup></li> <li>PRE-SAFE PLUS rear-end collision protection</li> <li>Active Blind Spot Assist<sup>13</sup></li> <li>Active Lane Keeping Assist<sup>14</sup></li> </ul>			
<b>Warmth &amp; Comfort Package</b>	○	○	●
<i>Requires Premium Package on S 550 4MATIC</i> <i>Requires Driver Assistance Package on S 63 AMG 4MATIC</i> <ul style="list-style-type: none"> <li>Heated wood/leather steering wheel <i>Not included on AMG models if ordered in combination with AMG Performance steering wheel</i></li> <li>Heated front center armrest and door armrests</li> <li>Heated rear seats</li> </ul>			
<b>Sport Package</b>	○	—	—
<ul style="list-style-type: none"> <li>19" AMG<sup>®</sup> twin 5-spoke wheels with all-season tires<sup>4</sup> or 20" AMG multispoke wheels with high-performance tires<sup>4</sup></li> <li>Sport lower body styling (front and rear bumpers, side skirts)</li> <li>Diamond-block grille with chrome-tipped pins</li> <li>Brushed aluminum sport pedals with rubber studs</li> </ul>			
<b>AMG Exterior Carbon Fiber Package</b>	—	○	○
<ul style="list-style-type: none"> <li>Carbon fiber front air-dam splitter, side-sill and rear diffuser inserts, and side mirror covers</li> <li>Carbon fiber engine cover <i>Standard on S 65 AMG</i></li> </ul>			

● Standard ○ Optional △ No-charge option — Not available

## Individual Options

	S 550 4MATIC	S 63 AMG 4MATIC	S 65 AMG
MAGIC SKY CONTROL <sup>®25</sup>	○	○	○
Electrically heated windshield <i>Requires Premium Package</i>	○	○	○
Night View Assist <sup>®</sup> PLUS <sup>11</sup>	○	○	●
19" twin 5-spoke wheels <sup>4</sup> with all-season Extended Mobility tires <sup>26</sup>	△	—	—
20" 5-spoke wheels <sup>4</sup> with high-performance tires <sup>26</sup>	○	—	—
19" AMG 10-spoke wheels <sup>4</sup> with high-performance tires <sup>26</sup>	—	△	—
20" AMG forged-alloy 10-spoke wheels <sup>4</sup> (Silver) with high-performance tires <sup>26</sup>	—	○	△
20" AMG forged-alloy 10-spoke wheels <sup>4</sup> (Black) with high-performance tires <sup>26</sup>	—	○	△
20" AMG twin 5-spoke forged-alloy wheels <sup>4</sup> with high-performance tires <sup>26</sup>	—	—	△
Red-painted brake calipers	—	○	○
AMG Carbon Ceramic Braking System <sup>5</sup>	—	○	○
Carbon fiber engine cover <i>Also available in AMG Exterior Carbon Fiber Package</i>	—	○	●
Black finish for front air-dam flics and mesh grilles	—	—	△
Burmester <sup>®</sup> High-End 3D Surround Sound System	○	○	●
SPLITVIEW front-seat entertainment system <sup>20</sup>	○	○	○
Refrigerator box in rear cabin <sup>27</sup>	○	○	○
Wood/leather steering wheel	○	△	△
AMG Performance steering wheel with DINAMICA side grips <sup>28</sup>	—	○	○
Nappa leather upholstery	●	●	—
<i>designo</i> Exclusive Nappa leather upholstery, leather-trimmed dash	○	○	●
<i>designo</i> DINAMICA headliner <i>Included with <i>designo</i> leather on S 550</i>	○	●	—
<i>designo</i> Nappa Leather headliner	—	—	●
Black Poplar or Burl Walnut wood trim	△	△	△
<i>designo</i> Metallized Ash wood trim	○	○	○
<i>designo</i> Black Piano Lacquer wood trim	○	○	○
<i>designo</i> Black Piano Lacquer “Flowing Lines” wood trim	○	○	○
AMG carbon fiber/Black Piano Lacquer wood trim	—	○	○

## Specifications

	S 550 4MATIC	S 63 AMG 4MATIC	S 65 AMG
<b>Engine</b>	4.7-liter biturbo Direct Injection V-8 449 hp @ 5,250–5,500 rpm 516 lb-ft torque @ 1,800–3,500 rpm	Handcrafted 5.5-liter biturbo Direct Injection AMG V-8 577 hp @ 5,500 rpm 664 lb-ft torque @ 2,250–3,750 rpm	Handcrafted 6.0-liter biturbo AMG V-12 621 hp @ 4,800–5,400 rpm 738 lb-ft torque @ 2,300–4,300 rpm
<b>Transmission</b>	7-speed automatic with shift paddles	7-speed AMG SPEEDSHIFT <sup>®</sup> MCT with shift paddles	7-speed AMG SPEEDSHIFT PLUS with shift paddles
<b>Wheels</b>	19" triple 5-spoke <sup>4</sup> with all-season Extended Mobility tires <sup>26</sup>	20" AMG 5-spoke <sup>4</sup> with high-performance tires <sup>26</sup>	20" AMG forged, polished multispoke <sup>4</sup> with high-performance tires <sup>26</sup>
<b>Suspension</b>	4-wheel multilink with self-leveling AIRMATIC <sup>®</sup> and Adaptive Damping System (ADS)	4-wheel multilink AMG Adaptive Sport Suspension with AIRMATIC and ESP <sup>®</sup> Curve Dynamic Assist	4-wheel multilink AMG Adaptive Sport Suspension with MAGIC BODY CONTROL <sup>®</sup> curve tilting function, and ESP Curve Dynamic Assist
<b>Drivetrain</b>	4MATIC <sup>®</sup> all-wheel drive	AMG Performance 4MATIC all-wheel drive	Rear-wheel drive



## Wheel choices



19" triple 5-spoke  
● S 550 4MATIC



19" twin 5-spoke  
△ S 550 4MATIC



19" AMG twin 5-spoke  
○ S 550 4MATIC Sport Package



20" AMG multispoke  
○ S 550 4MATIC Sport Package



20" 5-spoke  
○ S 550 4MATIC



20" AMG 5-spoke  
● S 63 AMG 4MATIC



19" AMG 10-spoke  
△ S 63 AMG 4MATIC



20" AMG forged, polished multispoke  
● S 65 AMG



20" AMG forged twin 5-spoke  
△ S 65 AMG



20" AMG forged 10-spoke (Silver)  
○ S 63 AMG 4MATIC △ S 65 AMG



20" AMG forged 10-spoke (Black)  
○ S 63 AMG 4MATIC △ S 65 AMG

### Exterior Dimensions

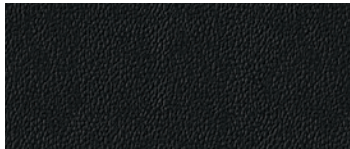
	S 550 4MATIC	S 63 AMG 4MATIC	S 65 AMG
Wheelbase	115.9"	115.9"	115.9"
Overall length	197.9"	198.6"	198.6"
Overall height	55.8"	56.0"	56.0"
Overall width (w/mirrors)	83.0"	83.0"	83.0"
Curb weight	4,707 lbs	4,678 lbs	4,839 lbs

### Interior Dimensions

	S 550 4MATIC	S 63 AMG 4MATIC	S 65 AMG
Headroom (front/rear)	40.0" / 39.7"	40.0" / 39.7"	40.0" / 39.7"
Legroom (front/rear)	41.7" / 33.4"	41.7" / 33.4"	41.7" / 33.4"
Shoulder room (front/rear)	57.0" / 51.4"	57.0" / 51.4"	57.0" / 51.4"
Cargo capacity	10.4 cu ft	10.4 cu ft	10.4 cu ft

# Color and trim.

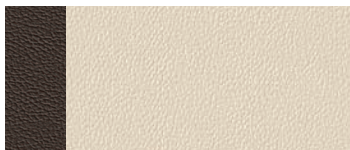
## Upholstery colors



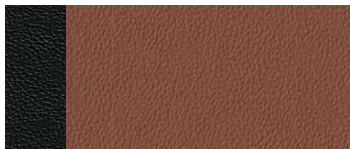
Black  
Available with all upholsteries



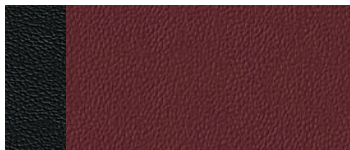
Crystal Grey/Black  
Available with all upholsteries



Porcelain/Espresso Brown  
Available with all upholsteries



Saddle Brown/Black  
*designo* Exclusive Nappa leathers only



Bengal Red/Black (S 65 AMG)<sup>25</sup>  
AMG *designo* Exclusive Nappa leather

## Upholstery styles



Nappa leather  
● S 550 4MATIC



*designo* Exclusive Nappa leather  
○ S 550 4MATIC



AMG Nappa leather  
● S 63 AMG 4MATIC



AMG *designo* Exclusive Nappa leather  
● S 65 AMG ○ S 63 AMG 4MATIC

● Standard ○ Optional

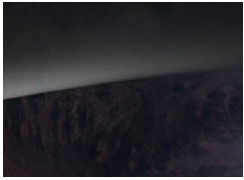
## Endnotes

- 1 Stated rates of acceleration are estimated based upon manufacturer's track results and may vary depending on model, environmental and road surface conditions, driving style, elevation and vehicle load.
- 2 No system, regardless of how advanced, can overcome the laws of physics or correct careless driving. Please always wear your seat belt.
- 3 Performance is limited by available traction, which snow, ice and other conditions can affect. Always drive carefully, consistent with conditions. Best performance in snow is obtained with winter tires.
- 4 Obey local speed and traffic laws.
- 5 Lower aspect ratio tires and accompanying wheels provide substantially increased treadwear, increased tire noise and reduced ride comfort. Serious wheel and tire damage may occur if the vehicle is operated on rough or damaged road surfaces or upon encountering road debris or obstacles. These tires are not designed for use on snow and ice. Winter tires mounted on appropriately sized and approved wheels are recommended for driving in those conditions.
- 6 Road Surface Scan active only at driving speeds below 80 mph while in Comfort mode, and may be limited by weather, lighting and road surface conditions. Obey local speed and traffic laws.
- 7 The carbon-ceramic brakes are designed expressly for high-performance braking. It is a characteristic of their materials and design that brake noise/squeal may result, along with differing brake pedal feel at lower brake temperatures compared to higher operating temperatures.
- 8 Standard or optional at no charge on S 65 AMG. See Options listing in this brochure or MBUSA.com/S for details for all models.
- 9 DISTRONIC PLUS<sup>®</sup> adaptive cruise control is no substitute for active driving involvement. It does not adapt cruising speed in response to stationary objects, nor does it predict the curvature and lane layout of the road ahead or the movement of vehicles ahead. It is the driver's responsibility at all times to be attentive to traffic and road conditions, and to provide the steering, braking and other driving inputs necessary

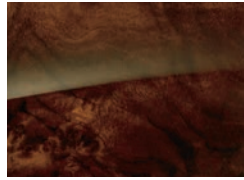
- to retain control of the vehicle. Drivers are cautioned not to wait for the DISTRONIC Proximity Warning System before braking, as that may not afford sufficient time and distance to brake safely.
- 10 Braking effectiveness also depends on proper brake maintenance, and tire and road conditions.
- 11 COLLISION PREVENTION ASSIST PLUS may not be sufficient to avoid an accident. It does not react to certain stationary objects, nor recognize or predict the curvature and/or lane layout of the road or every movement of vehicles ahead. It is the driver's responsibility at all times to be attentive to traffic and road conditions, and to provide the steering, braking and other driving inputs necessary to retain control of the vehicle. Drivers are cautioned not to wait for the system's alerts before braking, as that may not afford sufficient time and distance to brake safely. Autonomous braking is available at speeds between approximately 5 and 65 mph for moving vehicles, or 5 and 31 mph for stationary objects.
- 12 Night View Assist<sup>®</sup> PLUS does not replace the use of headlamps and must not be used as the primary visual source for the driver.
- 13 Rearview camera and Surround View System do not audibly notify driver of nearby objects and are not a substitute for actively checking around the vehicle for any obstacles or people. Images displayed may be limited by camera field of view, weather, lighting conditions and the presence of dirt, ice or snow on the cameras.
- 14 Blind Spot Assist may not be sufficient to avoid all accidents involving vehicles in your blind spot and does not estimate the speed of approaching vehicles. It must not be used as a sole substitute for driver awareness and checking of surrounding traffic conditions.
- 15 Driving while drowsy or distracted is dangerous and must be avoided. Lane Keeping Assist may be insufficient to alert a fatigued or distracted driver of lane drift and cannot be relied on to avoid an accident or serious injury. Lane Keeping Assist operates at speeds above approximately 37 mph.
- 16 The European Centre for Allergy Research Foundation (ECARF) has granted its Seal for Allergy Friendliness to the S-Class. For more information,



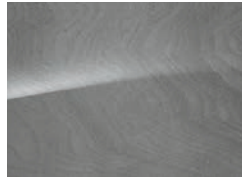
## Interior trim



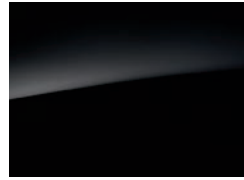
Black Poplar wood



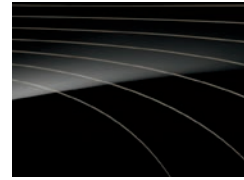
Burl Walnut wood



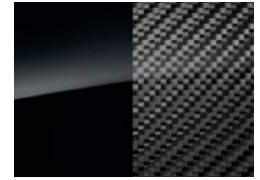
*designo* Metallized  
Ash wood



*designo* Black Piano  
Lacquer wood



*designo* Black Piano  
Lacquer "Flowing Lines"



Carbon fiber/Black Piano  
Lacquer (AMG only)

## Paintwork



Black



Anthracite Blue metallic



Diamond Silver metallic



Emerald Green metallic



Iridium Silver metallic



Lunar Blue metallic



Magnetite Black metallic<sup>29</sup>



Obsidian Black metallic



Palladium Silver metallic



Ruby Black metallic



*designo* Diamond White metallic<sup>30</sup>



*designo* Mocha Black metallic<sup>30</sup>



*designo* Magno Alanite Grey<sup>30</sup>  
(matte finish)



*designo* Magno Cashmere White<sup>30</sup>  
(matte finish)

visit [ECARF.org/en](http://ECARF.org/en)

- 16 While the navigation system provides directional assistance, the driver must remain focused on safe driving behavior, including paying attention to traffic and street signs. The driver should utilize the system's audio cues while driving and should only consult the map or visual displays once the vehicle has been stopped in a safe place. Maps do not cover all areas or all routes within an area.
- 17 The purchase of a new, satellite radio-enabled vehicle includes a 6-month introductory subscription to the Sirius All Access package, as well as a 3-year introductory subscription to SiriusXM Traffic and SiriusXM Weather. SiriusXM Traffic and Weather services are available for select markets. SiriusXM Satellite Radio, SiriusXM Traffic and SiriusXM Weather subscriptions are sold separately or as a package after trial period. If you decide to continue your subscription after your trial, the plan you choose will automatically renew and you will be charged according to your chosen payment method at then-current rates. Fees and taxes apply. To cancel you must call SiriusXM at 1-866-635-2349. See SiriusXM Customer Agreement for complete terms at [siriusxm.com](http://siriusxm.com). All fees and programming subject to change.
- 18 All Mercedes-Benz mbrace® services operate only where cellular and Global Positioning System satellite signals are available, which are provided by third parties and not within the control of Mercedes-Benz USA, LLC. An mbrace Package trial period is offered on new, Certified Pre-Owned and pre-owned sales and leases at an authorized Mercedes-Benz dealer. Subscriber Agreement is required for service to be active. Some services are only available on select vehicles. Your PIN is required in order to use certain services. Some services may be limited or restricted in some areas. Apps may be introduced and updated at varying dates, and may also require a vehicle software update. Driver is responsible for complying with traffic and other laws. See your dealer or [MBUSA.com/mbrace](http://MBUSA.com/mbrace) for details, including a list of compatible smartphones. Internet-based features require an active subscription to mbrace Mercedes-Benz Apps Package. Connection may be limited by cellular signal.
- 19 Bluetooth® interface does not provide phone charging or external antenna. Voice interactivity feature is dependent on selected handset. Visit

[www.mercedes-benz-mobile.com](http://www.mercedes-benz-mobile.com) for details. Phone sold separately. See dealer for a list of approved compatible phones.

- 20 System availability and use is not yet approved in some states. See your dealer for the latest information, and check local laws regarding the use of front-seat video displays in your area. Driver can also view the entertainment features while the gear selector is in Park.
- 21 Head-Up Display may not be visible with certain eyewear, including polarized glasses.
- 22 Roadside Assistance repairs may involve charges for parts, service and towing. Vehicle must be accessible from main roads. Depending on the circumstance, these services may be provided by an outside provider, courtesy of Mercedes-Benz Roadside Assistance. Restricted roadways, acts of nature and vehicle accessibility may limit our ability to provide services to you. For full details, eligibility requirements, and limitations/exclusions of Sign and Drive services, as well as the Roadside Assistance Program, please see your dealer.
- 23 The mbrace Mobile App is compatible with Apple iPhone® models running iOS 7.0 or later, and Android-based phones running OS 2.3 or later. Please visit [MBUSA.com/mbrace](http://MBUSA.com/mbrace) for more information.
- 24 Not available on S 65 AMG or in combination with Driver Assistance Package.
- 25 Introduction dates vary. Please see your dealer.
- 26 S-Class models are not provided with a spare tire. Models without Extended Mobility tires are provided with TIREFIT sealant and a portable air pump.
- 27 Refrigerator box reduces trunk space when installed, but is removable. Please see your dealer.
- 28 Not available with Porcelain/Espresso Brown upholstery.
- 29 Available on S 63 AMG 4MATIC and S 65 AMG only.
- 30 Extra-cost option. Some *designo* paintwork may require additional production time. Alanite Grey available on S 550 4MATIC and S 65 AMG only.



The personal rewards of striving to be the best are even more meaningful in the development of young people than they are for automobiles. Instilling the values of leadership, goal-setting, discipline and teamwork in youth is an investment in everyone's future. It's why Mercedes-Benz USA is collaborating with the Laureus Sport for Good Foundation, with an ongoing commitment to train and place hundreds of coaches for after-school and in-school sports programs in communities around the country. Sports offer kids more than the chance to be physically active and have fun. It's also an opportunity to have a mentor who can guide them, help them learn how to deal with major life issues, and help them grow stronger not just physically but in their character. As a Mercedes-Benz driver, you become a part of this effort to give hundreds of thousands of kids a better life today, and all of us a brighter tomorrow.

*Learn more about how Mercedes-Benz USA believes in giving back at [MBUSA.com/community](http://MBUSA.com/community)*

