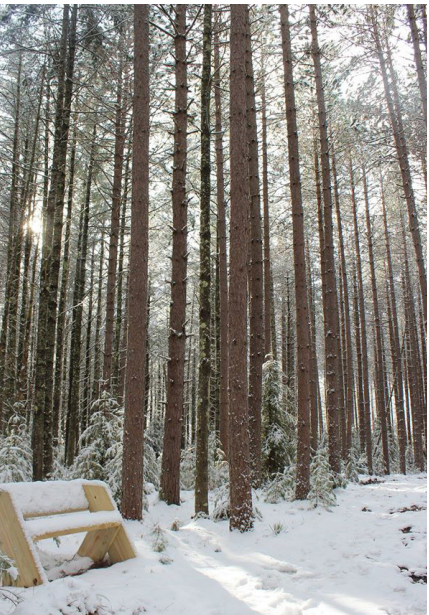


2016 *annual report*



**Wisconsin Public Service
Foundation**





Wisconsin Public Service
Foundation

Greetings from the Wisconsin Public Service Foundation.

With a mission of creating brighter futures for the communities in which we do business, the Wisconsin Public Service Foundation achieved another incredibly successful year in 2016. We provided more than \$1.4 million to organizations throughout our service area, and our active and retired employees gave nearly \$325,000 through workplace giving and other initiatives.

While our financial support helps fund these organizations, it is our employees who provide the power. This year, I'm pleased to spotlight five groups that received funding in 2016, along with Wisconsin Public Service employees who offer their time and talent to them. Together, we're making a lasting impact in the community and in the lives of our customers.

The Wisconsin Public Service Foundation has been in the business of giving since 1964, and we think the future looks brighter than ever.

Sincerely,

M. Beth Straka

M. Beth Straka
Senior Vice President
Corporate Communications and Investor Relations

How to apply for a foundation grant

We encourage eligible organizations to apply for support.

Visit www.wisconsinpublicservice.com/company/grant_application.aspx for eligibility requirements and to apply for a grant.

Applications are accepted throughout the year and awarded quarterly. Applications for first quarter must be received by Jan. 31, second quarter by April 30, third quarter by July 31 and fourth quarter by Oct. 31.



Miracle League of Green Bay

The Miracle League of Green Bay provides children with mental and/or physical challenges, ages four to 19, an opportunity to play baseball as team members, with real uniforms and in an organized league, regardless of their capabilities.

“

A note from the organization

Wisconsin Public Service Foundation has supported Miracle League of Green Bay since its inception 12 years ago – from the first season when we had four teams to today with 16 teams, 200 players and 400 volunteers. Funds from the foundation's most recent support will be used for our Baseball Forever Campaign, which will replace the field's rubber surface and make major additions to a handicap-accessible play area. As a retired employee of WPS, I am extremely proud to have support from my former employer and the many WPS employee and retired employee volunteers who provide enjoyment for some very special kids.

PAUL LIEGEOIS, FOUNDER/GENERAL MANAGER

A word from a volunteer

My husband and I have been volunteering with Miracle League for five years. We've developed a relationship with the kids, and we look forward to the new season as much as they do. It's exciting to see the kids improve their baseball skills over the years. The first year, the little girl I worked with couldn't talk and needed help batting – now she can do both. It's a blessing to be part of Miracle League and give back to the families involved.

**TRACY REEB, SENIOR USER EXPERIENCE ANALYST
WISCONSIN PUBLIC SERVICE**



”



Oconto County Historical Society

The Oconto County Historical Society maintains buildings, such as the Carriage House addition to the Beyer Home Museum, and helps administer programs, such as the Holt and Balcom Logging Camp.

“

A note from the organization

Your very generous contribution will enable us to continue our efforts to restore and preserve the oldest logging camp sitting where it was built in the United States. Without donors such as WPS, the camp would have fallen to ruin years ago. Thank you for helping us keep our north woods logging heritage alive!

KATHLEEN MARSH, CURATOR, AND ROBERT BROWN, CAMP MANAGER

A word from a volunteer

I've been involved with the Oconto County Historical Society for the past six years. Wisconsin Public Service Foundation played a vital part in our efforts, including the foundation's support in constructing a 5,200-square-foot museum addition where all of the newly restored vehicles are now on display. Together we have enriched our community.

**DAVID RETZLAFF, ROAD PROJECT PLAN SPECIALIST
WISCONSIN PUBLIC SERVICE**

”





Marinette County Fair

Marinette County Fair

The annual fair features animals, 4-H and open class exhibits, merchant exhibits, music, midway entertainment, truck and tractor pulls, and a demolition derby.

“

A note from the organization

The foundation grant from WPS was extremely helpful in keeping the dreams of young cattle exhibitors alive in Marinette County. The county fair each year is the highlight of the summer for many kids and exhibitors. The old barn was unsafe, and a new barn was badly needed. Having a new cattle barn was quite exciting for the exhibitors and made it safer for all who entered.

LISA WITAK, MARINETTE COUNTY FAIR
BOARD SECRETARY



A word from a volunteer

Many memories are made at the county fair every year, and having a new cattle barn for kids to exhibit their animals in and to showcase agriculture in a positive light is irreplaceable.

**COREY KUCHTA, SUPERVISOR - AGRICULTURE SERVICES AND
CUSTOMER GENERATION
WISCONSIN PUBLIC SERVICE**

”





Literacy Green Bay

Literacy Green Bay helps adults and families acquire the reading, writing, math, English language, computer and workforce skills they need to function effectively as workers and community members.

“

A note from the organization

WPS has always been a supporter of our adult literacy programming, but wonderfully so in 2016! Wisconsin Public Service Foundation was a generous sponsor of our Equipped for the Future renovation project. It allowed us to reconfigure our existing space into larger classrooms, incorporating new furnishings and new technology. Our instructors and tutors now are well-equipped to teach our learners the literacy, language and work skills instruction needed to be self-sufficient community members.

KATHY CORNELL, EXECUTIVE DIRECTOR

A word from a volunteer

I joined the board of directors of Literacy Green Bay three years ago because I wanted to give back to this community that has done so much for my family and me. When people become literate, there is a positive impact on social, political, economic, health and crime systems: doors begin to open and lives change. I am so proud to be an employee of a company that is able and willing to give back to organizations like this.

**NAN WILLIAMS, MANAGER - OPERATIONAL STRATEGY
WISCONSIN PUBLIC SERVICE**

”





Awassa Nature Preserve and Hiking Trail

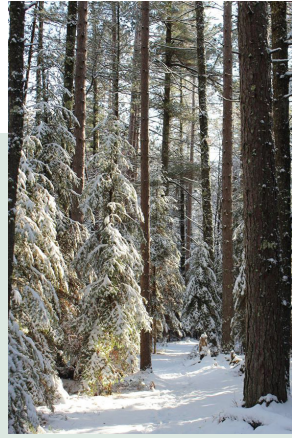
The Awassa Nature Preserve and Hiking Trail, owned by the town of St. Germain, includes 230 acres of scenic woodlands and several miles of trails for hiking, snowshoeing and skiing.

“

A note from the organization

We are starting construction on an additional two miles of trail made possible by funding from the Wisconsin Public Service Foundation. This grant allows us to accommodate runners and hikers in the summer and skiing and snowshoeing in the winter. We could not have added the trail mileage without support from WPS.

**ANNE SMALL, CHAIRPERSON OF THE
NON-MOTORIZED TRAILS COMMITTEE IN ST. GERMAIN**



A word from a volunteer

The Awassa Trail is an excellent addition to the St. Germain community. It's equally special that the Wisconsin Public Service Foundation could provide funding to help develop the trail, since it lies on property the company once owned. Residents and visitors alike will be able to enjoy the natural beauty of the area for many years to come.

**LEAH VAN ZILE, COMMUNITY RELATIONS LEADER
WISCONSIN PUBLIC SERVICE**

”



support areas

Arts and culture – Arts and culture add to the richness of life in our communities. We support projects that promote diversity and make the arts accessible to all people, including theater, dance, music, drama and museums.

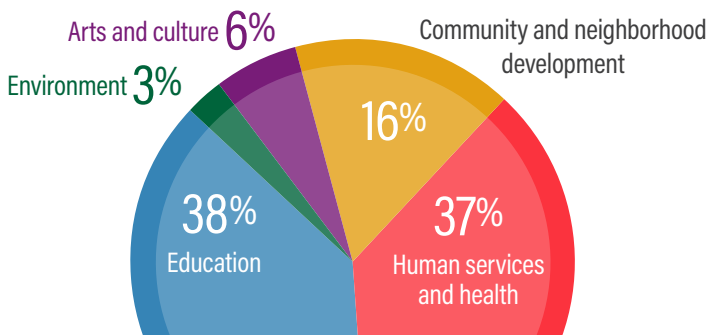
Community and neighborhood development – Communities become stronger when neighbors work together. We support nonprofit organizations dedicated to community improvement.

Education – Lifelong learning helps ensure a strong future for our communities and their economies. We support programs that complement our company's educational programs and philosophies, including opportunities for minorities and women. We support programs through which businesses and educational institutions partner, provide career planning and mentor youth.

Environment – Our foundation helps protect natural resources and supports efforts for the betterment of forests, recycling, renewable energy, energy efficiency, fish and wildlife, and water and air quality.

Human services and health – The physical and emotional well-being of everyone in our communities is a measure of the health of the communities. We support programs that serve limited-income, senior and handicapped individuals. We also support programs emphasizing wellness.

2016 GIVING PERCENTAGES



**Wisconsin Public Service
Foundation**