

2016 DONOR REPORT

the gift of health



Intermountain Foundation®
McKay-Dee Hospital



Cindy Kunz

TO OUR DONORS:

Representing Intermountain Foundation-McKay-Dee Hospital, I knew that whether you had an injury, illness, wellness class, or a support group, this was the “go to” home for great care.

Then, during my term, I found myself viewing the hospital from the lens of a “customer.” As a patient, a mother, and a grandmother, I experienced first-hand the welcoming attitude and genuine care at Intermountain Healthcare and McKay-Dee Hospital. I am grateful to this organization for striving to go above and beyond, because these tender moments make a difference.

I am proud of leading a dedicated group of volunteers who are accelerating advancements in healthcare. We rolled up our sleeves and gave our time, ideas, and dollars. It was a pleasure to be a part of an unpaid, working board, which is productive and valuable. I encourage those who want to shape the future of healthcare in our community to join us.

Cindy Kunz
Board President, Outgoing



Erich Sontag

Some of the most significant events in my family’s life have centered on this wonderful community asset we all share: McKay-Dee Hospital. The births of our children, the care for my nearly 100-year-old grandfather, and back surgeries for myself and for my wife have all involved this hospital and its tremendous caregivers.

McKay-Dee is a gem in our region, providing high quality, affordable care. I look forward to working with those who want to champion our mission and advance our interest in healthy communities and healthy people.

Erich Sontag
Board President, Incoming

the gift of health

MCKAY-DEE HOSPITAL HEALTHCARE HEROES

DOTTIE VERNIEU, HOSPITAL VOLUNTEER & DONOR

With a professional and volunteer career spanning over 50 years at McKay-Dee Hospital,



Dottie's emphasis is on rehabilitation and helping those with paralysis resulting from stroke or traumatic brain injuries. Dottie was instrumental in developing and presenting programs such as "A Fine Line," where paralyzed cast members warn high school

students about risk-taking behavior; "Freedom Festival," which hosted activities such as wheelchair basketball; and "Road to Recovery," a support group for stroke patients. In 1984, Dottie created what is now called the Women's Council of McKay-Dee Hospital. This group of volunteers, including Dottie, is still active, and enthusiastically supports their signature event, Breakfast with Santa, to benefit children with disabilities.

JUAN FUENTES, MD, DONOR

Helping people live better lives is what motivates Dr. Juan Fuentes. In 1984, Dr. Fuentes began



practicing neuroradiology at McKay-Dee Hospital. He specializes in reading images of the brain and spine, and performing interventions such as spine epidural injections, nerve ablations, nerve root blocks, and spinal tumor ablations. His extraordinary

skills have relieved the pain for thousands in our local community. He continues to remotely read CT body images and X-rays for physicians treating indigent patients in Peru and the Philippines.

THOMAS (TIM) D. DEE III, BOARD VOLUNTEER & DONOR

Tim spent his work career at Intermountain Healthcare, where he was a Systems Analyst in the



Revenue Cycle Organization. Carrying on the healing legacy of the Dee Family has also been Tim's lifetime endeavor. As a trustee for the Lawrence T. and Janet T. Dee Foundation, the Annie Taylor Dee Foundation, and the Thomas and Candace Dee Family Foundation, Tim

is intent on improving the lives of people in Northern Utah, specifically in the Ogden and Salt Lake communities, and at McKay-Dee Hospital. Tim serves on the boards of Intermountain Foundation - McKay-Dee Hospital, Intermountain Healthcare Foundation, and McKay-Dee Hospital Board of Trustees.

NURSING EXCELLENCE AWARDS:

Julianne Hawkins, Courtney Sorensen, Lori Isaacson, Diane Young, Russell Bradley, Amy Squier, Heidi Spendlove

The Nursing Excellence Award honors nurses nominated by their peers for the exemplary way they embody McKay-Dee Hospital's nursing philosophy and the core values they demonstrate as they deliver extraordinary patient care.

Shown left to right: Julianne Hawkins, Courtney Sorensen, Lori Isaacson, Diane Young, Russell Bradley, Amy Squier, and Heidi Spendlove.



NUHOPE BRINGS HOPE TO STUDENTS BATTLING DEPRESSION

NUHOPE began in 2007 as a way to utilize the power of education and awareness to directly reverse suicide rates in Northern Utah. Kristy Jones, North Region Community Benefit Manager and the NUHOPE chair at McKay-Dee says, "It takes a lot of hard work, dedication, and perseverance to create, organize, and maintain a program like this one. When I think about all of the lives that have been transformed over the years, I am thrilled at the possibilities for the future."



Kristy talks about the impact, particularly with high school students: "One girl had gone through a very difficult time – she'd isolated herself from family and friends, feeling like no one cared. She started having thoughts about suicide when 'out of the blue' a friend called and asked her to lunch. A year later as she sat in the NUHOPE class, it dawned on her that her friend, who was a year older, had taken the class and used what he learned to save her life."

The NUHOPE program will reach 12,000 students during the current school year in Weber and Davis counties through its school-based suicide prevention classes. Other aspects of NUHOPE include an annual suicide awareness walk, a task force of young adults, suicide survivors, mental health/social service providers, educators, law enforcement, veteran's advocates, and concerned citizens working together. The program provides training, awareness events, and other programs to facilitate healing and remembrance of those lost to suicide.

The program's success is reflected in its recent selection as one of ten "Programs of Excellence" from the Hospital Charitable Services Awards, sponsored by Jackson Healthcare. The winners are chosen based on excellence in community impact, innovation, collaboration, leading practices, and program replication. Congratulations to everyone involved in this very important and deserving program!

McKay-Dee Hospital supports more than 20 community programs, reaching 20,000 patients and community members. One of its key initiatives is NUHOPE (Northern Utah HOPE) -- a school-based program where educators, teachers, and facilitators teach youth how to cope with depression.

2016 HIGHLIGHTS

DONOR DOLLARS INVESTED IN THE HOSPITAL AND COMMUNITY

EQUIPMENT

Used in clinical settings to provide the best possible outcomes for patients. Foundation dollars fund at least 5% of the hospital's capital equipment priorities each year.

\$491,898

CLINICAL EDUCATION

Providing the latest advancements in healthcare treatment to our community through enhanced education for caregivers.

\$71,988

COMMUNITY PROGRAMS

Providing life-saving community health-related and hospital programs. Donors currently fund over 20 programs in the areas of disease prevention, healthy lifestyles, wellness, cancer support services, suicide prevention and awareness, and the delivery of care to the community.

\$342,991

ANNIE TAYLOR DEE GUEST HOME

Providing "a home away from home" for family members of patients in the hospital, allowing the important emotional healing of having family nearby during medical crises. 2,283 stays were logged in 2016.

\$124,805

CARDIAC FITNESS INSTITUTE

One of the few centers nationwide that offers all four rehabilitation programs in one location: Heart, Pulmonary, Vascular, and Cancer.

\$307,866

MCKAY-DEE SURGERY AND ORTHOPEDICS CENTER

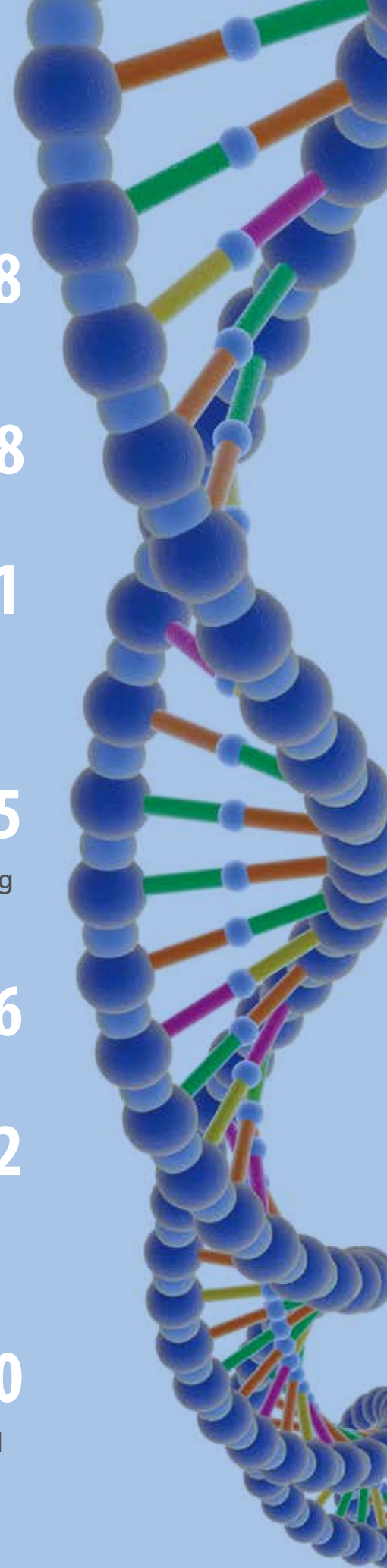
Sports Rehab, return to work and therapy pools. Inpatient and outpatient surgeries including: ENT (ears, nose and throat), oral/dental procedures, orthopedics, podiatry, plastics/cosmetic surgery, gynecology, neurology, ophthalmology, urology, and general surgery.

\$450,032

THOMAS D. DEE II AUDITORIUM

More than 240 donors contributed to help create this 220-seat gathering space, providing caregivers and the community a place for personal and professional growth.

\$600,000



UPCOMING INTERMOUNTAIN FOUNDATION EVENTS

18th Annual Medical Education Open

Ogden Golf and Country Club

Monday, June 5, 2017

Presenting Sponsor:

Samuel C. &

Myra G. Powell

Foundation

Sponsorship packages

ranging from \$500-\$10,000

MEDICAL EDUCATION OPEN



McKay-Dee Hospital Foundation Annual Gala

Ogden Eccles Conference Center

Thursday, Oct. 5, 2017

Presenting Sponsor:

Mary Elizabeth Dee

Shaw Foundation

Sponsorship packages

ranging from \$1,500-
\$25,000



Community Development Board

Cindy Kunz,
Chair

Erich Sontag,
Vice Chair

Richard Taylor,
Secretary

Timothy Pehrson,
*North Region
VP/McKay-Dee Hospital CEO*

H. DeWayne Ashmead, PhD

Stewart E. Barlow, MD

Ruth Brockman

Blake Burrell

Thomas (Tim) D. Dee III

Laurel Fedor, MD

Kay Hardy

James C. Hoellein (deceased)

Karen Leonardi

Kimberly Maguire

Michael Meyer

Richard "Dick" Webber

Pete Zeigler

PART OF INTERMOUNTAIN HEALTHCARE FOUNDATION, McKay-Dee Hospital was founded in 1910 as Dee Memorial Hospital. Since then, generous gifts from the community have played a critical role in advancing medicine and improving lives. As patients' needs evolve and grow, each and every gift makes a difference in our ability to deliver on our mission: *Helping People Live the Healthiest Lives Possible.*[®]

North Region Foundation Staff:

Richard Taylor – Chief Development Officer

Lisa Maxwell – Major Gift Officer

Emily Stokes – Major Gift Officer, Logan

Pat Carlsen – Foundation Specialist

Michelle Darrington – Foundation Specialist

Noellee Shaw – Foundation Specialist

the gift of health



Intermountain Foundation[®]
McKay-Dee Hospital

4401 Harrison Boulevard, Ogden, Utah 84403

(801) 387-7175 • mckaydeefoundation.org

If you wish to opt out of receiving future Foundation communications, please call our toll-free number at 1-800-660-3599 or email us at intermountainfoundation-optout@gmail.com and provide your name, address, phone number and any specific information you feel necessary for us to honor your request.

