

2016 | ECOSPORT



Courtesy of Ford Motor Company



Go Further



Explore the city...

EcoSport is different. Imaginative. Designed to help you make the most of living in the city. EcoSport is also smaller, more maneuverable and — with a choice of responsive 1.5L petrol or diesel engine, and a manual¹ or automatic transmission¹ — more fuel-efficient than conventional sport utility vehicles.

... from a fresh perspective.

Raised ride-height means you enjoy a commanding driving position in EcoSport, with a confidence-building view out. And at just 3,998 mm long and 1,765 mm² wide, EcoSport only takes up a small footprint. These key design features combine to make it ideal for mastering confined spaces on busy city streets — as well as weekend getaways to the country.

Titanium. Moondust Silver. Available equipment.

¹Available feature. ²Excluding sideview mirrors.

Designed to take the rough...

Titanium. Mars Red. Available equipment.



... with the smooth.

Titanium. Golden Bronze. Available equipment.



Drive your own road.

Driving along narrow urban streets can be a daunting proposition in a conventional sport utility vehicle. With its compact dimensions and commanding view out, this is precisely where EcoSport is designed to excel.

Outstanding maneuverability is yours to enjoy, courtesy of electric power-assisted steering (EPAS). EPAS delivers full power for effortless maneuvering at parking speeds, and steadily weights up for optimum comfort and feel once you're on the move.

The perfect city vehicle is also a great drive on motorways – where an aerodynamic shape can be a real asset. With this in mind, the EcoSport design team spent 160 hours in a wind tunnel tweaking a millimeter here and a millimeter there to optimize airflow. This meticulous attention to detail has resulted in a drag coefficient of only 0.37, helping EcoSport slip through the air with fuel-saving efficiency.

Our advanced PowerShift 6-speed automatic transmission¹ saves fuel and reduces CO₂ emissions compared to a conventional automatic.

Titanium. Panther Black. Available equipment.

¹Available feature.



Welcome aboard.

EcoSport is spacious. Comfortable. Welcoming. Think of it as your personal sanctuary from the hustle and bustle of city life.

You're surrounded! Up to 4 front speakers and 2 rear speakers¹ surround you with quality audio reproduction to help get the most pleasure from your music.

At your fingertips. Remote Control Locking, cruise control¹ and power windows add to the overall feeling of comfort and convenience.

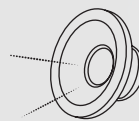
Voice-activated SYNC^{®1,2} makes it easy to stay connected with your world when you're away from home. Once paired, SYNC recognizes your phone and automatically transfers your contacts to support voice calling.



| SYNC^{1,2}



6 AIRBAGS¹



6 SPEAKERS¹

Titanium. Available equipment.

¹Available feature. ²Driving while distracted can result in loss of vehicle control. Only use SYNC/other devices, even with voice commands, when it is safe to do so. Some features may be locked out while the vehicle is in gear. Not all features are compatible with all phones. Message and data rates may apply. Functionality varies by market.



Do you like the idea of air conditioning as standard? Or the availability of electronic automatic temperature control,¹ which lets you adjust the temperature to your preferred setting? EcoSport offers both.



Can a vehicle think for you? EcoSport can. When you're driving, an arrow illuminates when you reach optimum revs, so you know when to shift gear for the best possible fuel efficiency.

The power of imagination.

Imagine a vehicle that unlocks automatically as you pull on the door handle – and then lets you start the engine at the touch of a button.

You've just imagined our keyless entry and push-button start!¹ With this technology, all you need is the correct key fob in your possession to get in and start your vehicle.

¹Available feature.



Carry it off in style.

EcoSport has ample seating for 5 adults. But that's just the start. It also has a spacious 362-liter¹ luggage compartment to swallow up your belongings and clever touches to help make EcoSport easier and more enjoyable to live with.

The 2nd-row 60/40 split-fold seat folds flat and tumbles forward to increase load-carrying capacity to 705 liters.¹

The cooled glove box can keep up to 6 beverage cans chilled, so you're unlikely to ever get thirsty on a long trip.

Load compartment tie-downs in the luggage area help secure your purchases when you're on the way home, while more than 20 different storage spaces keep things organized.



Titanium. Bright Yellow. Available equipment.

¹Measured in accordance with the VDA method.

EcoSport Specifications



Standard Features

Mechanical

Anti-Lock Brake System (ABS) (manual transmission)

Anti-Lock Brake System (ABS) and Electronic Stability Control (ESC) with hill launch assist (automatic transmission)

Battery saver

Electric power-assisted steering (EPAS)

Front stabilizer bar

Power front disc/rear drum brakes

Seating

2-way manual front-passenger seat

Front-passenger seat slide-out storage drawer

Manual recline front seats

2nd-row 60/40 split-fold seat

Interior

Center console

Console ashtray

Cooled glove box

Driver and front-passenger sun visors with vanity mirrors

Load compartment light

Load compartment tie-downs

Overhead console with sunglasses holder (LHD only)

Power door locks

Steering column reach/rake adjust

Theater-dimming lighting

Exterior

Body-color front and rear upper bumpers with self-colored lower bumpers

Emergency brake light (flashing brake light)

Front and rear tow loops

Headlamp leveling control

Heated rear window

Laminated windshield

Power sideview mirrors with turn signal indicators and integrated blind spot mirrors

Power swing-gate release

Rear fog lamp

Rear intermittent wiper

Tinted glass

Safety & Security

2-way adjustable outboard head restraints

3-point safety belts

Airbags – Single-stage driver and front-passenger front¹

Child-safety rear door locks

Engine immobilizer

ISOFIX hard-point attachments (outboard rear seats only)

Side-intrusion door beams

Dimensions

Interior (mm)	Front/Rear
Head room	1,008/971
Shoulder room	1,355/1,302
Leg room	1,043/956

Exterior (mm)	
Wheelbase	2,521
Length	3,998
Height	1,645
Width – Excluding mirrors	1,765
Width – Including mirrors	2,057

Capacities (liters)	
Cargo volume behind front seats	705
Cargo volume behind rear seats	362

Dimensions may vary by trim level.

Engines

1.5L Ti-VCT I-4 Engine
82 kW @ 6,300 rpm

1.5L I-4 Diesel Engine
66 kW @ 3,750 rpm

Titanium. Mars Red. Available equipment.

¹Always wear your safety belt and secure children in the rear seat.

Ambiente, Trend & Titanium



Ambiente. Dark Shadow trim. Available equipment.

Ambiente

Includes all standard features, plus:

Seating

2-way manually adjustable driver's seat
Front-passenger seat back map pocket

Interior

AM/FM stereo/single-CD player with MP3 capability and 4 speakers
Auxiliary audio input jack
Front floor mats
Ingot Silver-painted instrument panel, air vents and door trim appliqué
Manual air conditioning
Manual headlamp control
Power windows with driver 1-shot-down feature

Exterior

15" steel wheels with covers and 195/65R15 low-rolling-resistance tires
Black door handles
Black sideview mirrors
Black upper and lower grille
Front fog lamps with black bezel
Windshield wipers – Front 6-speed variable-intermittent

Safety & Security

Belt-Minder® safety belt reminder for driver
Remote Control Locking with 1 flip key and 1 plain key

Available Options

1.5L Ti-VCT I-4 engine with 5-speed manual transmission
1.5L Ti-VCT I-4 engine with PowerShift 6-speed automatic transmission
1.5L I-4 diesel engine with 5-speed manual transmission

Available Packages

Marketing Flex Pack 12 includes front-passenger seat slide-out storage drawer, emergency brake light, rear power windows, and 16" Style 1 alloy wheels with 205/60R16 ATR tires (LHD only)

Marketing Flex Pack 14 includes 16" Style 1 alloy wheels with 205/60R16 ATR tires

Trend

Includes select Ambiente features, plus:

Seating

4-way manually adjustable driver's seat
Driver's seat back map pocket

Interior

AM/FM stereo/single-CD player with MP3 capability and 6 speakers
Cruise control (automatic transmission)
Leather-wrapped steering wheel
Overhead console with sunglasses storage
Power windows with driver 1-shot-up/-down feature
Steering wheel with audio controls
Sterling Silver-painted instrument panel, air vents and door trim appliqué
SYNC® voice-activated in-vehicle communications and entertainment system with USB port

Exterior

16" Style 1 alloy wheels with 205/60R16 ATR tires
Black roof rack
Body-color door handles
Body-color sideview mirrors
Light-finish upper and lower grille
Spare wheel cover

Safety & Security

Airbags – Front-seat side¹
Airbags – 2-row side-curtain¹
Anti-theft perimeter alarm

Available Options

1.5L Ti-VCT I-4 engine with PowerShift 6-speed automatic transmission
1.5L I-4 diesel engine with 5-speed manual transmission

Available Package

Marketing Flex Pack 15 includes DALI light, and Sunset Silver-painted instrument panel, air vents, door trim and steering wheel appliqué

Titanium

Includes select Trend features, plus:

Mechanical

1.5L Ti-VCT I-4 engine with PowerShift 6-speed automatic transmission

Seating

Driver's manual lumbar adjust
Driver's seat armrest

Interior

Auto-dimming rearview mirror
Auxiliary powerpoint in luggage compartment
Bluetooth® interface connection
Courtesy lights with 2 map lights
Electronic automatic temperature control
Fuel computer
Keyless entry and push-button start
Rear floor mats

Exterior

16" Style 3 alloy wheels with 205/60R16 ATR tires
Automatic headlamps
Chrome upper and lower grille
Front fog lamps with chrome bezel
Rear parking sensors
Silver roof rack
Titanium badge
Windshield wipers – Rain-sensing front

Safety & Security

Belt-Minder safety belt reminder for front passenger
Remote Control Locking Special System

Available Package

Marketing Flex Pack 16 includes leather-trimmed seats with perforated inserts, Dark Leather/Red interior trim, soft touch front-door armrests and vinyl rear-door armrests



15" Steel with Covers
Standard on Ambiente



16" Style 1 Alloy
Standard on Trend
Available on Ambiente



16" Style 3 Alloy
Standard on Titanium

¹Always wear your safety belt and secure children in the rear seat. The Bluetooth word mark is a trademark of the Bluetooth SIG, Inc.

Exteriors This helpful guide is intended for selecting an exterior color – not features, options or a trim level.



Diamond White



Chill*



Moondust Silver*



Bright Yellow



Mars Red*



Golden Bronze*



Kinetic*

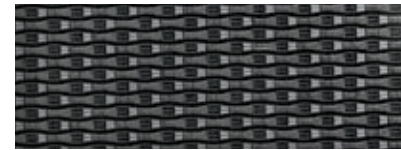


Smoke*

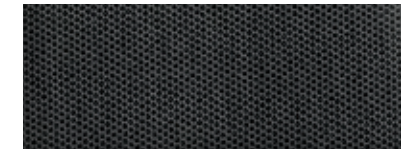


Panther Black*

Interiors



Dark Shadow Cloth¹



Charcoal Black Cloth²



Warm Neutral Grey Cloth³



Charcoal Black Cloth⁴



Charcoal Black Leather with Perforated Inserts⁵

Accessories



Our range of high-quality accessories can help you get the most out of your EcoSport. Each accessory is designed specifically for your vehicle, so you can be assured of a perfect fit.

Please ask your dealer for full availability details.



Sport pedal covers



Carpeted floor mats



Trunk tray



Hood protector

⁶Ford Licensed Accessory. Availability varies by market. THULE is a registered trademark of Thule Sweden AB.

*Metallic.

¹Standard on Ambiente. ²Standard on Trend. ³Optional on Trend. ⁴Standard on Titanium. ⁵Optional on Titanium.

Colors are representative only. See your dealer for actual paint/trim options.



Go Further



GO FURTHER



Quality



Green

Vehicles may be shown with optional equipment which may or may not be available in your market. Features may be offered only in combination with other options or subject to additional ordering requirements/limitations. Dimensions shown may vary due to optional features and/or production variability. Information is provided on an "as is" basis and could include technical, typographical or other errors. Ford makes no warranties, representations, or guarantees of any kind, express or implied, including but not limited to, accuracy, currency, or completeness, the operation of the information, materials, content, availability, and products. Ford reserves the right to change product specifications, pricing and equipment at any time without incurring obligations. Your Ford or Lincoln Dealer is the best source of the most up-to-date information on Ford and Lincoln vehicles.



Safe



Smart

Ford Genuine Parts & Service. Keep your vehicle in optimum operating condition with scheduled maintenance service. Ford and Lincoln Dealership technicians know your vehicle inside and out. They are continuously trained by Ford Motor Company and the parts they use are specifically designed for your vehicle. □ See your dealer for limited warranty information on Ford Original Accessories. Ford Licensed Accessories (FLA) are warranted by the accessory manufacturer's warranty. FLA are designed and developed by the accessory manufacturer and have not been designed or tested to Ford Motor Company engineering requirements. Contact your Ford Dealer for details and/or a copy of all limited warranties.