



Innovation
that excites

2016 MAXIMA®

WELCOME TO THE 2016 NISSAN MAXIMA® DIGITAL BROCHURE

Full of images, feature stories, and all the specification and trim level information you need to help select your MAXIMA®.

[Click here](#) to sign up for news and updates on the 2016 MAXIMA®.





TRANSFORM your drive from elevated to exhilarating at the touch of a button. Feel 300 horsepower push you deeply into a sculpted sport seat. Lean in to your favorite curve as sleek aerodynamics let you slice through the air. And after a pulse-raising ride, just as quickly return to swift, effortless motion. The all-new 2016 Maxima®, the 4-Door Sports Car.® Designed to boost your excitement **AT WILL.**



GIVE IT SIX SECONDS, AND YOU'LL NEVER LOOK AT A 4-DOOR THE SAME WAY AGAIN.

Dig deep into Maxima's 300 horsepower and feel the solid push into the seat that only newly refined VQ V6 power can provide, with the assistance of technology inspired by GT-R[®] and a better power to weight ratio than a BMW[®] 335i or Acura[®] TLX 3.5 V6.¹ For those who live by numbers, 0-60 comes up in impressive time. For those who live by the drive, the wail of the exhaust as it pulls to its 6,400 rpm redline is all the proof you'll ever need.²

See the 4-Door Sports Car[®] in action at
bit.ly/maximaperformance

Nissan Maxima[®] Platinum shown in Pearl White with accessory Rocker Panel Moldings, Rear Diffuser, and Premium Spoiler.



¹2016 Nissan Maxima vs 2015 BMW[®] 335i and 2015 Acura[®] TLX 3.5 V6. Competitor information obtained from manufacturers' websites. ²Professional driver. Closed course. Obey all traffic laws, always drive safely and wear your seatbelt. Damage resulting from racing, competitive driving, track and/or airstrip use not covered by warranty. See your New Vehicle Limited Warranty and Owner's Manual for proper vehicle operation and complete warranty details. Acura[®] is a registered trademark of Honda Motor Co., Ltd. BMW[®] is a registered trademark of BMW of North America.

DRIVE PAST HANDSOME, GO DIRECTLY TO STUNNING.

Lowered, sculpted, and streamlined, Maxima® achieves a sweeping aerodynamic profile. However, watch the light as it traces a path around a curvaceous fender and it's clear – it's not just about cheating the wind, it's about a love of form. In fact, the engineers and designers created a unique metal-stamping technique, just so they could add such a seductive curve to Maxima®'s deeply scalloped doors.



BREATHTAKING DETAILS

"Floating" roof appearance

LED headlights¹ with integrated signature

Dual chrome-tipped exhaust finishers

Aggressive lowered stance

Deeply sculpted character lines



Information Provided by:
DEALER
E-PROCESS

Nissan Maxima® Platinum shown in Gun Metallic.

¹Available feature. Low-beam only.

To see Maxima®'s cabin come to life, watch the video at bit.ly/maximainterior16

Technically, the term is “Wow”. There's no better way to describe it – the perfect execution of driving function with elegance and style. The quality of materials. The ideal placement of controls. The long list of luxuries you expect – and a few you hadn't even thought of. It's clear that a great deal of time was spent, so that every moment in the new Maxima® feels special. Wow, indeed.

PURE AMBIENCE

Premium Ascot leather-wrapped D-shaped steering wheel¹

Zero Gravity Front Seats

Climate-controlled front seats¹

Dual Panel Panoramic Moonroof¹

Remote Engine Start System² with Intelligent Climate Control

Heated steering wheel¹
Information Provided

Ambient LED lighting¹

Genuine stitching on dashboard, doors and console



DEALER

Nissan Maxima® Platinum shown in Cashmere Leather.

¹Available feature. ²State laws may apply; review local laws before using.

UNLIMITED ENGAGEMENT.

By placing key controls intuitively where you want them, Maxima® connects you to your drive like no other. Rotating the center console 7 degrees towards the driver gives you an easy reach to key controls. The 7" Advanced Drive-Assist® Display and 8" multi-touch control monitor give you two large displays to view key information. And no detail was overlooked. The ergonomically shaped shift lever, Display Commander dial and Sport Mode button are all grouped together and carefully placed to fall readily to hand, putting personalized performance exactly where you desire – at your fingertips.

8" multi-touch control monitor

7" Advanced Drive-Assist® Display

7-degree center console rotation

Display Commander

Drive Mode Selector



Nissan Maxima® SR shown in Charcoal Leather.

NISSAN ADVANCED DRIVE-ASSIST® DISPLAY^{1, 2}

IT'S EVEN A QUICK READ.

With all you've got going on, you can still focus on what's most important: driving. Maxima®'s 7" color display is for your eyes only. From turn-by-turn directions to caller ID, even warning you if it senses you need a break,³ the Advanced Drive-Assist® Display lays it all right before your eyes – helping to minimize time looking away.^{1, 2} And if you like, you can even change the color of the Maxima® on the display to match your mood.



TURN-BY-TURN NAVIGATION⁴



BLUETOOTH® AUDIO⁵



TIRE PRESSURE MONITORING SYSTEM⁶



DRIVING AIDS⁷



COMPASS



DRIVER ATTENTION ALERT³



Information

¹Driving is serious business and requires your full attention. Even with the Advanced Drive-Assist® Display, only use phone or other communication devices when safe. ²Information displayed is dependent on how vehicle is equipped. ³Driver Attention Alert standard on Platinum only. It is the driver's responsibility to remain alert at all times. DAA is only a warning to inform the driver of a potential lack of driver attention or drowsiness. It does not detect and provide an alert in every situation. See Owner's Manual for details. ⁴Never program while driving. GPS mapping may not be detailed in all areas or reflect current road status. ⁵Availability of specific features is dependent upon the phone's Bluetooth® support. Please refer to your phone Owner's Manual for details. Bluetooth® word mark and logos are owned by Bluetooth SIG, Inc., and any use of such marks by Nissan is under license. ⁶TPMS is not a substitute for regular tire pressure checks. ⁷Blind Spot Warning is not a substitute for proper lane change procedures. The system will not prevent contact with other vehicles or accidents. It may not detect every vehicle or object around you.

NissanConnectSM DIAL IN YOUR WORLD.

NissanConnectSM with Navigation^{1,2}

Imagine the possibilities when you combine all the features of an advanced navigation system with connected technology to help keep you in touch. While you're driving, you can use Voice Recognition and Online Search with Google[®] to find that hip new food truck.^{1,2,3} Invite your friends to join in with Bluetooth[®] hands-free calling.⁴ Keep in the loop with the hands-free text messaging assistant,⁵ or just kick back and listen to music from Bluetooth[®] streaming audio,³ or one of the two iPod[®]/USB connection ports.⁶ More? Available SiriusXM[®] Travel Link[®] helps keep you on the go with live traffic alerts and weather forecasts – it can even help you find the cheapest gas.^{2,3}



NissanConnectSM with Navigation^{1,2}



SiriusXM[®] Travel Link^{®3}

¹Driving is serious business. Only use NissanConnectSM services when safe to do so. Subscription Agreement required. Compatible smartphone required. Not all app features are available for all models. Some apps have late availability. May require dealer service visit or software upgrade to activate. Never program while driving. GPS mapping may not be detailed in all areas or reflect current road status. Cellular network not available in all areas. Cellular network, apps, and services, including Google[®] services, are provided by independent companies not within Nissan's control and may require subscription and owner consent to activate. Should provider terminate/restrict service, service may be terminated without notice or liability to Nissan and/or its agents. Nissan not responsible for any equipment or app replacement/upgrades, or associated costs, that may be required for continued operation. Terms and conditions of Subscription Agreement apply. Standard text rates and/or data usage may apply. See retailer and check www.NissanUSA.com/connect for details. ²Never program while driving. GPS mapping may not be detailed in all areas or reflect current road status. ³Required SiriusXM[®] Satellite Radio, NavTraffic[®] and NavWeather[®] subscriptions sold separately after trial period. Installation costs, one-time activation fee, other fees and taxes will apply. NavTraffic[®] available in select markets. Services available only to those 18 or older in the 48 contiguous states and D.C. Fees and programming subject to change. Subscriptions governed by Customer Agreement available at siriusxm.com. ©2015 Sirius XM Radio Inc. Sirius, XM[®] and all related marks and logos are trademarks of Sirius XM Radio Inc. Availability of specific features is dependent upon the phone's Bluetooth[®] support. Please refer to your phone Owner's Manual for details. Bluetooth[®] word mark and logos are owned by Bluetooth SIG, Inc., and any use of such marks by Nissan is under license. ⁵Use the text messaging feature after stopping your vehicle in a safe location. If you have to use the feature while driving, exercise extreme caution at all times so full attention may be given to vehicle operation. Compatible smartphone required. Standard text rates and/or data usage may apply. ⁶Driving is serious business and requires your full attention. If you have to use the connected device while driving, exercise extreme caution at all times so full attention may be given to vehicle operation.

Advanced Touch-screen Monitor Standard on every Maxima[®], you've got a massive 8.0" multi-touch control color monitor with Voice Recognition. It's so advanced, you can even pinch and swipe key screens, similar to a tablet.

Display Commander gives you an all-access pass and controls the functions you make through the 8" multi-touch screen. By rotating the dial or pushing it left to right, you can scroll through all menus, and move selections around the screen.

To find out more about Maxima®'s NissanConnectSM, go to NissanUSA.com/connect. And watch a short video at bit.ly/maximaconnect

MEET YOUR ENTOURAGE.

NissanConnectSM Services powered by SiriusXM[®] Let our people look after you and your people. With available NissanConnectSM Services, you have a selection of plans and services ranging from remote start access on your phone to calling for help if the system senses there's been an accident. Hey, that's what friends are for.^{1, 2, 3}



EMERGENCY PREPAREDNESS

When things go bad, we're good to have:

- Automatic Collision Notification – If you're in an accident severe enough to deploy the air bags, we'll automatically call for help.⁴
- Emergency Calling – The touch of a button connects you to a live person to assist you.⁴
- Roadside Assistance Service – Flat tire? Run out of gas? We can dispatch roadside assistance to your Maxima[®]'s location.⁵



REMOTE ACCESS

- Not in your car? Help is accessible through your compatible computer or compatible smartphone.⁴
- Remote Door Lock and Unlock – Forgot to lock up? Use your smartphone like a super-powerful remote – or just call us.⁴
 - Remote Engine Start – Nothing beats coming out to a warmed-up or cooled-down car.⁶
 - Remote Horn and Flashing Lights – Now, where did I park? We'll sound the horn and flash the lights so you can easily find your car.



CUSTOMIZABLE ALERTS

- You tell us the limits. We'll alert you via email, text message or automated phone call if someone's out of line.^{4, 7}
- Speed – A real help if you've got lead-foots in the family.
 - Curfew Alerts – We'll even send notification to the driver 20 minutes before the curfew alert.^{4, 7}
 - Valet Alerts – If the valet drives your Maxima[®] more than 0.2 miles, you'll know. You can also set geographical Boundary Alerts when your vehicle is driven 2 miles beyond a set area.



CONVENIENCE SERVICES

- Getting you from here to there – easy:
- Connected and Assisted Search – Forgot where your favorite band is playing tonight? We'll find it.
 - Journey Planner – Vacation? Through the web portal, we'll send a route with up to five waypoints and a destination directly to your Maxima.^{®2, 3, 4, 8}

¹Driving is serious business. Only use NissanConnectSM Services powered by SiriusXM[®] when safe to do so. Late availability for some features. Services, including automatic crash notification and SOS, are dependent upon the telematics device being in an operative condition, its ability to connect to a wireless network, compatible wireless network availability, navigation map data, and GPS satellite signal receptions, the absence of which can limit or prevent the ability to reach NissanConnect Customer Care or receive support. Never program while driving. GPS mapping may not be detailed in all areas or reflect current road status. You are responsible for using Remote Engine Start and Remote Horn features in accordance with any laws, rules or ordinances in effect in your vehicle's location. Cellular network not available in all areas and/or available at all times. Cellular technology is evolving, and changes to cellular networks provided by independent companies are not within Nissan's or Sirius XM Radio Inc.'s control. Neither Nissan nor Sirius XM are responsible for associated costs that may be required for continued operation due to cellular network termination (including equipment upgrades, if available, or roaming charges on alternative networks). Should cellular provider terminate/restrict service, service may be terminated without notice and with no liability to Nissan, SiriusXM and/or their respective agents or affiliates. Standard text rates and/or data usage may apply. Certain services require a PIN for activation. Subscription Agreement required and terms and conditions of Subscription Agreement apply. See <http://www.NissanUSA.com/connect> for details. Enrollment is required to receive full suite of services. Six (6) month trial period begins on your date of vehicle purchase or lease of a new Nissan; subsequently a paid subscription is required at the then current rate to continue to receive services. Text rates and/or data usage may apply. ²Never program while driving. GPS mapping may not be detailed in all areas or reflect current road status. ³Required SiriusXM[®] Satellite Radio, NavTraffic[®] and NavWeather[®] subscriptions sold separately after trial period. Installation costs, one-time activation fee, other fees and taxes will apply. NavTraffic[®] available in select markets. Services available only to those 18 or older in the 48 contiguous states and D.C. Fees and programming subject to change. Subscriptions governed by Customer Agreement available at siriusxm.com. ©2015 Sirius XM Radio Inc. Sirius[®], XM[®] and all related marks and logos are trademarks of Sirius XM Radio Inc. ⁴Availability of specific features is dependent upon the phone's Bluetooth[®] support. Please refer to your phone Owner's Manual for details. Bluetooth[®] word mark and logos are owned by Bluetooth SIG, Inc., and any use of such marks by Nissan is under license. ⁵Roadside Assistance and Trip Interruption available during the first four years after initial new vehicle delivery. Restrictions apply. See Owner's Manual for details. ⁶State laws may apply; review local laws before using. ⁷Use the text messaging feature after stopping your vehicle in a safe location. If you have to use the feature while driving, exercise extreme caution at all times so full attention may be given to vehicle operation. Compatible smartphone required. Standard text rates and/or data usage may apply. ⁸Driving is serious business. Only use NissanConnectSM Mobile Apps when safe to do so. App availability is dependent upon vehicle model, trim level, packaging, and/or options. See NissanUSA.com/connect for complete app availability details. Never program while driving. GPS mapping may not be detailed in all areas or reflect current road status. Compatible smartphone required. Cellular network and GPS signals not available in all areas and/or at all times. Cellular technology is evolving, and changes to cellular networks provided by independent companies are not within Nissan's control. Nissan is not responsible for associated costs that may be required for continued operation due to cellular network termination (including equipment upgrades, if available, or roaming charges on alternative networks). Should cellular provider terminate/restrict service, service may be terminated without notice and with no liability to Nissan and its agents or affiliates. Subscription Agreement required and terms and conditions of Subscription Agreement apply. See www.NissanUSA.com/connect for details. Thirty-six (36) month trial period begins on your date of vehicle purchase or lease of a new Nissan; subsequently a paid subscription is required (excluding Pandora[®], if Pandora app via NissanConnect is equipped on vehicle) at the then current rate to continue to receive services. Text rates and/or data usage may apply. Google[®] is a registered trademark of Google Inc. iPod[®] is a registered trademark of Apple, Inc. All rights reserved. iPod[®] not included.

300

HP

261

LB-FT
TORQUE

30

MPG
HWY¹

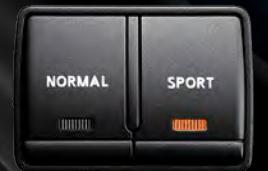


WHEN YOU AIM FOR THE STARS, YOU BUILD A ROCKET.

Power, courtesy of a 3.5-L V6 engine. Under the Maxima®'s hood beats the heart of Nissan's VQ V6 engine. This year, the legendary V6 has been extensively refined and optimized, even employing sodium-filled exhaust valves – technology borrowed from our GT-R® supercar. From its microfinished forged crankshaft and anodized pistons to its high-flow tuned induction system, this 300-hp powerhouse is designed to exhilarate from idle to redline.

Response, brought to you by the Next-Generation Xtronic CVT.® Completely re-engineered for both enthusiast and economist, Maxima®'s all-new CVT features dynamic step shifting, wider gear ratio coverage, and an adaptive shift controller. The result: more distinctive shift points, a more connected, spirited driving experience, and increased fuel economy – up to 30 MPG highway!

Adrenaline on tap, via Sport Mode. Put the Drive Mode Selector into Sport and you'll sharpen throttle response, steering feel, and transmission tuning for a pulse-raising ride. The system even adjusts Maxima®'s available Active Sound Enhancement (ASE), bringing in a more purposeful engine note into the cabin – music to any enthusiast's ears.



Information Provided by:
DEALER
E-PROCESS

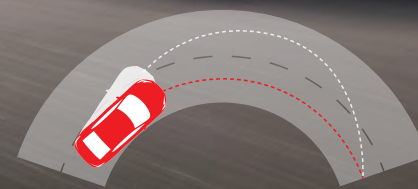
Nissan Maxima® Platinum shown in Coulis Red.

¹2016 EPA fuel economy estimate 30 MPG highway for 2016 Nissan Maxima.® Actual mileage may vary with driving conditions – use for comparison only.



MAXIMA® SR: CURVE YOUR ENTHUSIASM.

A great sports car is about more than just power. It's the overall balance, including handling, braking, and ride that create a truly memorable drive. To give you a G-induced grin, Maxima® SR combines 19" diamond-cut, machine-finished alloy wheels with a sport-tuned suspension featuring advanced dynamic technologies. Specialized hardware includes specially tuned ZF Sachs® dampers with a mono-tube design in the rear, and a reinforced chassis that provides higher torsional rigidity than a Porsche® Cayman.¹ So get inside, grab the thick wheel with Alcantara® inserts and column-mounted paddle shifters, and go enjoy the thrill of carving up your favorite road in the way only a purpose-built sports car can provide.



Active Trace Control. By selectively applying Maxima's® brakes when cornering, Active Trace Control can automatically engage the inner or outer brakes, helping to optimize your line through a turn.²



Active Engine Brake. As you apply the brakes, Maxima's® Active Engine Brake system downshifts the CVT, slowing the vehicle with less effort, while enhancing the feeling of stopping confidence.



Active Ride Control. In the event you're jostled by a bump in the road, Maxima's® Active Ride Control system kicks in. It works by automatically applying the brakes to help smooth the impact, helping you stay composed and comfortable.



Information Provided by
DEALER
EXPRO

¹2016 Nissan Maxima® SR vs. 2007-2012 Porsche® Cayman.® ²Active Trace Control cannot prevent accidents or loss of control. It is the driver's responsibility to be in control of the vehicle at all times. Porsche® and Cayman® are registered trademarks of Porsche Cars North America, Inc. ZF Sachs® is a registered trademark of ZF Friedrichshafen AG.

Maxima® SR. Purists Welcome. In the world of the 4-Door Sports Car®, there's a special place for those who have a mindset that goes beyond enthusiasm, passion, or even exhilaration. Welcome to a place where driving is simply an expression of who you are – brought to you by people who feel exactly the same way.

THE DRIVE, ELEVATED.

Premium Ascot leather-wrapped D-shaped steering wheel with Alcantara® insert

Premium Ascot Leather-appointed seating with diamond-quilted Alcantara® inserts

"Liquid Chrome" faceted interior trim

Column-mounted paddle shifters

Integrated Dynamics-control Module (IDM)



NISSAN AROUND VIEW® MONITOR¹
IF YOU WANT PARKING ANY EASIER, YOU'LL HAVE TO VALET.

What if parallel parking were easier? A RearView Monitor is great when backing up – but when it comes to parking, it's nice to see more than just what's directly behind you. That's why Maxima®'s class-exclusive Around View® Monitor uses four cameras to give you a virtual 360° bird's-eye view of your vehicle, with selectable split-screen close-ups of the front, rear, and curbside views, so you can get a better look.^{1, 2, 3}

Parking sonar. Maxima®'s available parking sonar gives you an added ally in your pursuit of parking, with sensors on all four corners looking out for static objects and giving you an audible warning when it detects you're getting close.⁴

¹Parking aid/convenience feature. Cannot completely eliminate blind spots. May not detect every object and does not warn of moving objects. Always check surroundings and turn to look behind you before moving vehicle. ²Virtual composite 360° view. ³2015 J. D. Power Large Sedan Segmentation. 2016 Nissan Maxima® vs. 2015 competitors. ⁴The available Front and Rear Sonar System is a convenience, but is not a substitute for proper parking and/or backing procedures. Always check that it is safe to do so before moving vehicle. May not detect every object.



RIGHT ON THE NOSE

In Drive, the display gives you both a front and overhead view, so you can gauge just how far to pull up – without going too far.

COMPLETE THE PICTURE

Located under your driver's side mirror, this camera helps round out your virtual 360° bird's-eye view.²

SPARE YOUR WHEELS

In Drive or Reverse, you can push the camera button to switch out the overhead for a side view. A great help for seeing how close you are to the curb.

BACKGROUND SAVVY

In Reverse, the display helps you see what's directly behind you, while the overhead view helps with shorter objects that may otherwise be hidden below your window.¹

NISSAN SAFETY SHIELD® PHILOSOPHY

INNOVATION THAT LOOKS OUT FOR YOU.

Wouldn't it be cool if you had the confidence you need for every part of your drive? The Nissan Safety Shield® is a comprehensive approach to safety that guides the engineering and development of every vehicle we make.

MONITOR

Smart technologies are designed to help monitor conditions, from a system that helps ensure you're travelling on properly inflated tires, to an available system that monitors your driving, and alerts you that you may need a break.

Available Features:

Driver Attention Alert (DAA)¹

Predictive Forward Collision Warning (PFCW)²

Forward Emergency Braking (FEB)³

Blind Spot Warning (BSW)⁴

Rear Cross Traffic Alert (RCTA)⁵

Around View Monitor with Moving Object Detection⁶

Intelligent Cruise Control (ICC)⁷

RESPOND

Whether you need to hit the brakes hard or maneuver around an unexpected obstacle, these standard technologies help you respond to a potentially harmful situation.

Vehicle Dynamic Control⁸ helps you maintain your steered path.

Traction Control System helps reduce wheelspin in low-traction situations.

Anti-lock Braking System helps you maintain steering control around obstacles while braking heavily.

Electronic Brake force Distribution sends extra force to the rear brakes when you have additional weight of passengers or cargo in the back.

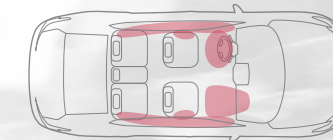
Brake Assist helps apply maximum braking force if it detects hard braking and senses you are in an emergency situation.⁹

PROTECT

When a collision is unavoidable, Nissan's Zone Body construction helps absorb the impact while the advanced seat belt and air bag systems help protect passengers.¹⁰

Six Standard Air Bags¹⁰

LATCH System (Lower Anchors and Tethers for Children)



6 Standard Air Bags.¹⁰ Nissan Advanced Air Bag System has supplemental front air bags with seat belt and occupant-classification sensors.¹⁰ In addition, Maxima® features front seat-mounted side-impact supplemental air bags,¹⁰ and roof-mounted curtain side-impact supplemental air bags with rollover sensor.¹⁰



Tire Pressure Monitoring System (TPMS) with Easy-Fill Tire Alert^{11, 12} TPMS lets you know when a tire is low. And Easy-Fill Tire Alert takes the guesswork out of filling your tires, with a beep of the horn when you've reached the correct pressure.



Nissan safety engineers have dedicated thousands of hours to evaluating hundreds of child restraints in Nissans. The result: An industry first, The Snug Kids® Child Safety Seat Fit Guide. This guide lists child seats that fit the rear seats of Nissan vehicles, as well as offers invaluable tips on correct installation. Look for the latest Fit Guide at NissanUSA.com/SnugKids

Looking for the right CRS for your Nissan? Watch this video first at bit.ly/NissanSnugKids

Information Provided



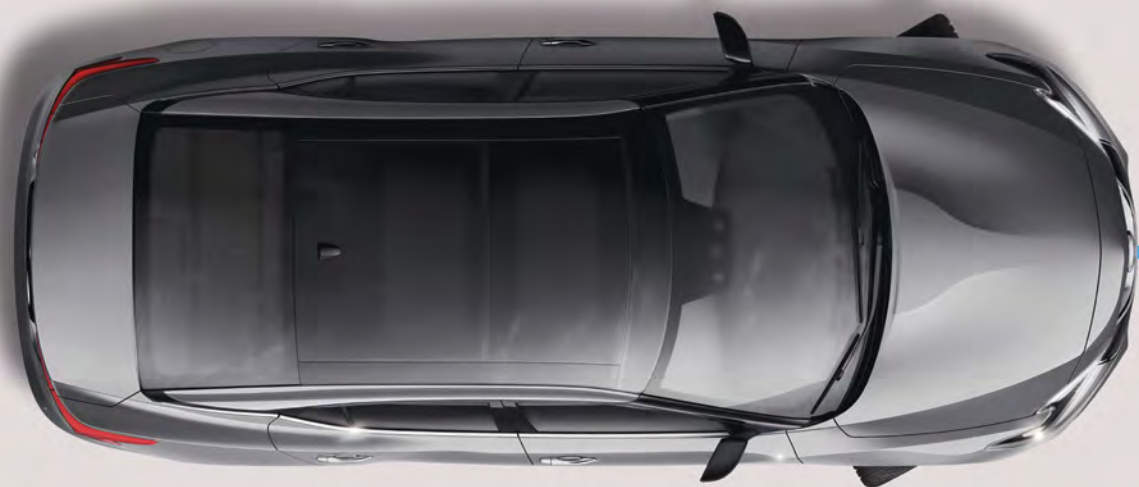
DEAL

¹It is the driver's responsibility to remain alert at all times. DAA is only a warning to inform the driver of a potential lack of driver attention or drowsiness. It does not detect and provide an alert in every situation. See Owner's Manual for details. ²PFCW is intended to warn you before a collision occurs; it cannot prevent a collision. Speed and other limitations apply. See Owner's Manual for details. ³FEB cannot prevent accidents due to carelessness or dangerous driving techniques. It may not provide warning or braking in certain conditions. Speed limitations apply. ⁴Blind Spot Warning is not a substitute for proper lane change procedures. The system will not prevent contact with other vehicles or accidents. It may not detect every vehicle or object around you. ⁵Not a substitute for proper backing procedures. May not detect all moving vehicles. Speed and other limitations apply. See Owner's Manual for details. ⁶AVM with MOD cannot completely eliminate blind spots and may not detect every object. MOD operates at vehicles speeds below 5 mph. Always check surroundings and turn to look behind you before moving vehicle. ⁷Intelligent Cruise Control is not a collision avoidance system or warning device. Designed to use limited braking. Failure to apply the brakes could result in an accident. ⁸VDC, which should remain on when driving except when freeing the vehicle from mud or snow, cannot prevent accidents due to abrupt steering, carelessness, or dangerous driving techniques. ⁹Brake Assist is only an aid to assist the driver and is not a collision warning or avoidance device. It is the driver's responsibility to be in control of the vehicle at all times. ¹⁰Air bags are only a supplemental restraint system; always wear your seat belt. Even with the occupant-classification sensor, rear-facing child restraints should not be placed in the front-passenger's seat. All children 12 and under should ride in the rear seat properly secured in child restraints, booster seats, or seat belts according to their size. Air bags will only inflate in certain accidents; see your Owner's Manual for more details. Inflated air bags shown for illustration purposes only, actual coverage area may differ. Air bags deflate after deployment. ¹¹TPMS is not a substitute for regular tire pressure checks. ¹²Vehicle must be on for the Easy-Fill Tire Alert to operate.

NISSAN SAFETY SHIELD TECHNOLOGIES™

GET AWAY WITH JUST A WARNING.

What if extra reassurance was easy to spot? Whether you're changing lanes on the highway or deftly maneuvering your way into a parking spot, Maxima®'s available Safety Shield Technologies™ offer you a suite of advanced systems that help you keep an eye out all around you, watch the flow of traffic and even think ahead.



Predictive Forward Collision Warning. In traffic, it only takes a moment to get caught off guard in a potentially dangerous situation. How about a little help? With this technology, a radar sensor on the front of Maxima® constantly monitors not just one vehicle ahead in your lane, but two. When the system detects sudden deceleration two vehicles ahead, it gives you an audible warning and a visual signal on the instrument panel. So you get a heads up, even if you can't see what's slowing you down.¹

Forward Emergency Braking. Using radar technology to keep an eye on your speed and proximity to the vehicle ahead of you, Forward Emergency Braking gives you audible and visual display warnings to help you reduce your speed, if necessary. It can also apply braking if you fail to respond to help you avoid a collision. If a collision is unavoidable, this feature will engage the brakes to help reduce speed of impact and reduce the severity of a collision.²



Blind Spot Warning. If another vehicle is detected in the blind spot area, an indicator appears in the driver's or front passenger's door pillar and on the Advanced Drive-Assist® Display. Put your turn signal on, and the indicator flashes with a warning chime to alert you.³



Rear Cross Traffic Alert. When you're backing out of a parking space, this available feature can detect and warn you about detected vehicles you might not see behind you approaching from either side. So backing up feels easier than ever.⁴



RearView Monitor shown.

RearView and Around View® Monitors. When you're in Reverse, the standard RearView Monitor shows what's directly behind you and makes backing up and parking easier. And the available class-exclusive Around View® Monitor uses four cameras to give you a virtual 360° bird's-eye view of your vehicle, with selectable split-screen close-ups of the front, rear, and curbside views, to help you see where you're going without second-guessing.^{5, 6, 7}

¹PFCW is intended to warn you before a collision occurs; it cannot prevent a collision. Speed and other limitations apply. See Owner's Manual for details. ²FEB cannot prevent accidents due to carelessness or dangerous driving techniques. It may not provide warning or braking in certain conditions. Speed limitations apply. ³Blind Spot Warning is not a substitute for proper lane change procedures. The system will not prevent contact with other vehicles or accidents. It may not detect every vehicle or object around you. ⁴Not a substitute for proper backing procedures. May not detect all moving vehicles. Speed and other limitations apply. See Owner's Manual for details. ⁵Parking aid/convenience feature. Cannot completely eliminate blind spots. May not detect every object and does not warn of moving objects. Always check surroundings and turn to look behind you before moving vehicle. ⁶Virtual composite 360° view. ⁷2015 J. D. Power Large Sedan Segmentation. 2016 Nissan Maxima® vs. 2015 competitors.

Information Provided by:





GENUINE NISSAN ACCESSORIES.

Every Genuine Nissan Accessory is custom-fit, custom-designed and durability-tested. Each one is backed by Nissan's 3-year/36,000-mile (whichever occurs first) limited warranty (if installed by dealer at the time of purchase),¹ and can be financed when installed by dealer at time of purchase.

A. Premium Spoiler

A fitting end to a breathtaking design.

B. 18" Aluminum-alloy Wheels

Aggressively styled, exclusively for Maxima.[®]

C. Interior Trim Appliques

Add some extra sport and sophistication with your choice of Carbon-fiber Look (shown) or Piano Black.

D. Illuminated Kick Plates and Interior Accent Lighting

For a grand entrance every time. (Sold separately).

E. All-season Floor Mats, Sport Carpeted Floor Mats, and Carpeted Floor Mats

Skip the mud, and other messes. (Sold separately)

F. Shift Knobs

Pick your hands-down favorite.

G. 19" Aluminum-alloy Wheels

So much visual punch, it's a technical knock-out.

H. Trunk Protector

Helps preserve and protect your cargo.

Additional Accessories:

- Hideaway Trunk Net
- Shopping Bag Hooks
- Trunk Organizer
- And More
- Carpeted Trunk Mat

COMPLETE YOUR TRANSFORMATION.

For more information and to shop online for Maxima[®] Genuine Nissan Accessories, go to bit.ly/16maxima-estore



To see Genuine Nissan Accessories in action, go to bit.ly/16maxima-gnavideos

¹Covered by Nissan's Limited Warranty on Genuine Nissan Replacement Parts, Genuine NISMO[®] S-Tune Parts, and Genuine Nissan Accessories for the longer of 12 months/12,000 miles (whichever occurs first) or the remaining period under the 3-year/36,000-mile (whichever occurs first) Nissan New Vehicle Limited Warranty. Terms and conditions apply. See Warranty Information Booklet for details.

Nissan Maxima[®] SR shown in Pearl White with Sport Spoiler, Splash Guards, Rocker Panel Moldings, Rear Diffuser, 19" Aluminum-alloy Wheels, and External Ground Lighting.

CHOOSE YOUR TRIM LEVEL

S

- 300 hp, 3.5-liter DOHC 24-valve V6 engine
- Xtronic CVT® transmission
- 18" Machine-finished aluminum-alloy wheels
- P245/45R18 V-rated all-season tires
- Drive Mode Selector with Sport or Normal modes
- LED Daytime Running Lights
- Halogen headlights and fog lights
- Taillights with integrated LED signature
- Advanced Drive-Assist® Display with 7.0" display
- NissanConnectSM with Navigation and 8.0" multi-touch control color monitor
- Voice Recognition for audio and navigation
- Hands-free text messaging assistant
- Display Commander
- RearView Monitor
- Bluetooth® Hands-free Phone System
- Dual Zone Automatic Temperature Control (ATC)
- HomeLink® Universal Transceiver
- Illuminated steering wheel-mounted audio and cruise controls
- Auto-dimming inside rearview mirror
- Nissan Intelligent Key® with Push Button Ignition
- Remote Engine Start System with Intelligent Climate Control
- Power windows and door locks
- Front map lights and rear LED reading lights
- Front seatback pockets
- Dual front cup and bottle holders
- 8-way power driver's seat
- 4-way power front-passenger's seat
- 60/40 Split fold-down rear seat-backs with valet locking function
- Cloth seat trim with leather-wrapped steering wheel and shift knob
- "Razor Steel" faceted interior trim
- AM/FM/CD audio system
- SiriusXM® Satellite Radio
- MP3/WMA CD playback capability
- Two USB connection ports
- Streaming audio via Bluetooth® wireless technology
- Radio Data System (RDS)
- Tire Pressure Monitoring System (TPMS) with Easy-Fill Tire Alert
- Vehicle Dynamic Control (VDC) with Traction Control System (TCS)
- Nissan Advanced Air Bag System



SV

INCLUDES S EQUIPMENT PLUS:

- Leather-appointed seats
- Heated front seats
- Power heated outside mirrors with LED turn signal indicators
- Front and Rear Sonar System
- Driver's seat power lumbar support
- Driver's seat manual thigh support extension



SL

INCLUDES SV EQUIPMENT PLUS:

- Dual Panel Power Panoramic Moonroof with one-touch open/close
- Intelligent Cruise Control (ICC)
- Active Noise Cancellation (ANC)
- Active Sound Enhancement (ASE)
- Adjustable ambient LED interior lighting
- Heated steering wheel
- Bose® Premium Audio System with AM/FM/CD
- 11 Speakers, including center channel
- Blind Spot Warning (BSW)
- Rear Cross Traffic Alert (RCTA)
- Predictive Forward Collision Warning (PFCW)
- Forward Emergency Braking (FEB)



SR

INCLUDES SL EQUIPMENT PLUS:

- 19" Diamond-cut machine-finished aluminum-alloy wheels
- P245/40R19 W-rated all-season tires
- Paddle shifters
- Integrated Dynamics-control Module (IDM) – Active Ride Control (ARC), Active Trace Control (ATC), Active Engine Brake (AEB)
- Sport-tuned suspension
- Front performance chassis damper
- LED low-beam headlights
- Climate-controlled front seats (heated and cooled)
- Premium Ascot leather-appointed seats with diamond-quilted Alcantara® inserts
- Premium Ascot leather-wrapped steering wheel with Alcantara® insert
- "Liquid Chrome" faceted interior trim
- Aluminum sport pedals
- Deletes Dual Panel Power Panoramic Moonroof



PLATINUM

INCLUDES SL EQUIPMENT PLUS:

- LED low-beam headlights
- Outside mirrors with reverse tilt-down feature
- Auto-dimming driver-side outside mirror
- NissanConnectSM services powered by SiriusXM®
- Driver Attention Alert (DAA)
- Around View® Monitor with Moving Object Detection (MOD)
- Power tilt/telescoping steering column
- Rain-sensing variable intermittent windshield wipers
- Rear-window power sunshade
- Memory System – driver's seat, steering wheel and outside mirrors
- Climate-controlled front seats (heated and cooled)
- Premium Ascot leather-appointed seats with diamond-quilted leather inserts
- Premium Ascot leather-wrapped steering wheel
- Mahogany wood-tone faceted interior trim



Information Provided by:



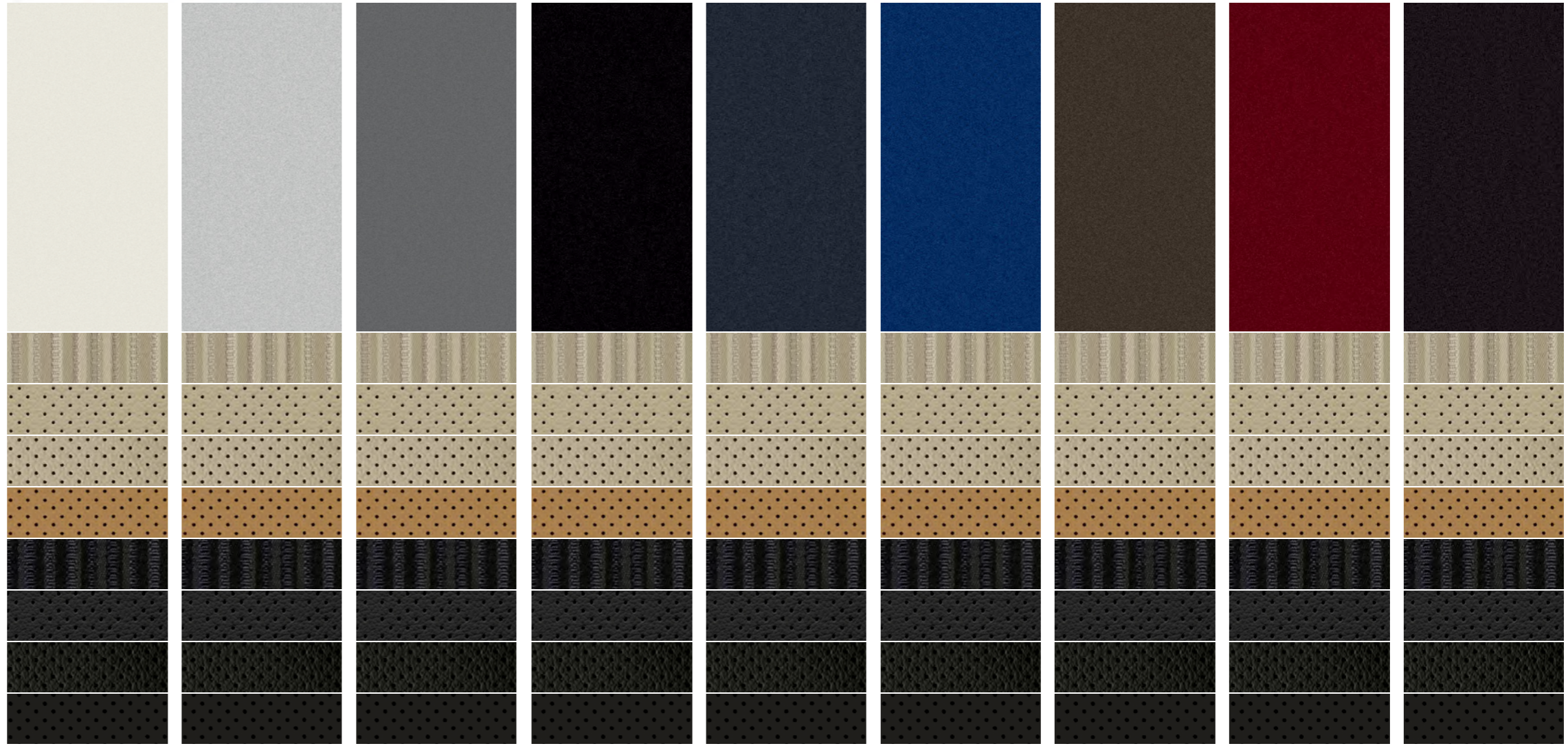
Alcantara® is a registered trademark of Alcantara S.p.A. Corporation. Bluetooth® word mark and logos are owned by Bluetooth SIG, Inc. and any use of such marks by Nissan is under license. Bose® is a registered trademark of The Bose Corporation. HomeLink® is a registered trademark of Genex Corporation. The Sirius®, XM®, and SiriusXM® names and all related marks and logos are trademarks of Sirius XM Radio Inc.

CHOOSE YOUR COLOR



You've decided which Maxima® you want, now here comes the best part: deciding what it's going to look like. Choose your favorite color and then pick from the available interiors based on the model of your choice.

Nano-pigment paint. Maxima® colors Coulis Red and Forged Bronze feature a new nano-pigment technology where the paint pigments are ground 10 times finer than those found in traditional paint. The resulting finish is stunning with an exceptionally deep, wet, lustrous look.



Pearl White¹ QAB Brilliant Silver K23 Gun Metallic KAD Super Black KH3 Storm Blue RBD Deep Blue Pearl RAY Forged Bronze CAT Coulis Red NAW Bordeaux Black GAB

	S	SV	SL	SR	PLT
CASHMERE CLOTH	■				
CASHMERE LEATHER		■	■		■
CAMEL LEATHER				■	
CHARCOAL CLOTH	■				
CHARCOAL LEATHER		■	■	■	■

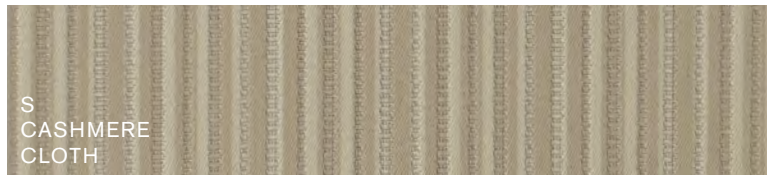
■ Standard

Nissan has taken care to ensure that the color swatches presented here are the closest possible representations of actual vehicle colors. Swatches may vary slightly due to the printing process and whether viewed in daylight, fluorescent or incandescent light. Please see the actual colors at your local Nissan dealer.



¹Extra cost option.

CHOOSE YOUR FABRIC



S
CASHMERE
CLOTH



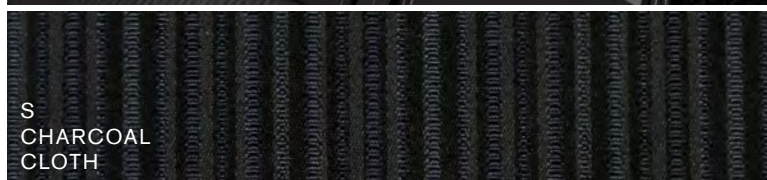
SV | SL
CASHMERE
LEATHER



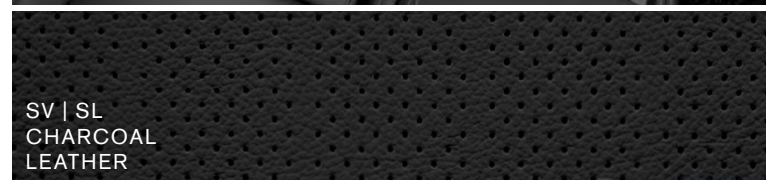
PLATINUM
CASHMERE
LEATHER



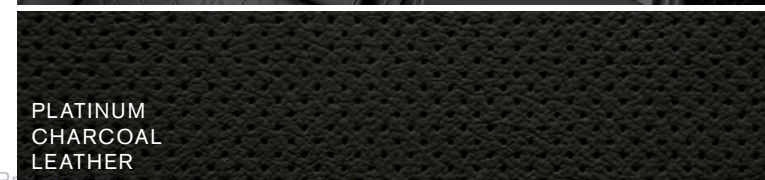
SR
CAMEL
LEATHER
WITH ALCANTARA® INSERTS



S
CHARCOAL
CLOTH



SV | SL
CHARCOAL
LEATHER



PLATINUM
CHARCOAL
LEATHER



SR
CHARCOAL
LEATHER
WITH ALCANTARA® INSERTS

SPECIFICATIONS

Engine	S	SV	SL	SR	Platinum
VQ35DE – 3.5-liter DOHC 24-valve V6 engine	■	■	■	■	■
– Horsepower – 300 hp @ 6,400 rpm					
– Torque – 261 lb-ft @ 4,400 rpm					
Continuously Variable Valve Timing Control System (CVTCS) on intake and exhaust valves	■	■	■	■	■
Nissan Direct Ignition System	■	■	■	■	■
Electronic drive-by-wire throttle	■	■	■	■	■

Drivetrain	S	SV	SL	SR	Platinum
Front engine/Front-Wheel Drive	■	■	■	■	■
Xtronic CVT® (Continuously Variable Transmission) with Drive Mode Selector	■	■	■	■	■
Paddle shifters				■	■
Integrated Dynamics-control Module (IDM) – Active Ride Control (ARC), Active Trace Control (ATC), Active Engine Brake (AEB)				■	■

Brakes	S	SV	SL	SR	Platinum
12.60" x 1.10" front and 12.13" x 0.63" rear vented discs	■	■	■	■	■
4-wheel Anti-lock Braking System (ABS)	■	■	■	■	■
Electronic Brake force Distribution (EBD)	■	■	■	■	■
Brake Assist	■	■	■	■	■

Suspension/Chassis Bracing/Steering	S	SV	SL	SR	Platinum
Independent strut front suspension	■	■	■	■	■
Independent multi-link rear suspension	■	■	■	■	■
Hollow-tube front stabilizer bar (24.2 mm)	■	■	■	■	■
Hollow-tube rear stabilizer bar (26.5 mm)	■	■	■	■	■
Sport-tuned suspension – retuned dampers, stiffer springs and larger front stabilizer bar (26.2 mm)				■	■
Front performance chassis damper				■	■
Front strut tower reinforcement	■	■	■	■	■
Rear chassis reinforcement	■	■	■	■	■
Hydro-electric power steering (HEPS)	■	■	■	■	■

Wheels/Tires	S	SV	SL	SR	Platinum
18" x 8.0" machine-finished aluminum-alloy wheels	■	■	■		■
19" x 8.0" diamond-cut machine-finished aluminum-alloy wheels				■	
P245/45R18 V-rated all-season tires	■	■	■		■
P245/40R19 W-rated all-season tires				■	

Exterior Features	S	SV	SL	SR	Platinum
LED Daytime Running Lights	■	■	■	■	■
Halogen headlights	■	■	■		
LED low-beam headlights				■	■
Automatic on/off headlights	■	■	■	■	■
Fog lights	■	■	■	■	■
Taillights with integrated LED signature	■	■	■	■	■
Dual mufflers with rolled chrome-tipped finishers	■	■	■	■	■
Premium rear spoiler	□	□	□		□
Sport spoiler				□	
Manual folding outside mirrors	■	■	■	■	■
Dual power outside mirrors	■				
Power heated outside mirrors with LED turn signal indicators		■	■	■	■
Outside mirrors with reverse tilt-down feature					■
Auto-dimming driver-side outside mirror					■
Dual Panel Power Panoramic Moonroof with one-touch open/close			■		■
Front and Rear Sonar System		■	■	■	■

Comfort/Convenience	S	SV	SL	SR	Platinum
Advanced Drive-Assist® Display with 7.0" color display	■	■	■	■	■
NissanConnectSM with Navigation and 8.0" multi-touch control color monitor	■	■	■	■	■
Voice Recognition for audio and navigation	■	■	■	■	■
SiriusXM® Traffic and Travel Link®¹	■	■	■	■	■
NissanConnectSM Services Powered by SiriusXM®¹					■
Hands-free text messaging assistant	■	■	■	■	■
Display Commander	■	■	■	■	■
Multi-functional trip computer	■	■	■	■	■
RearView Monitor	■	■	■	■	■

Comfort/Convenience (continued)	S	SV	SL	SR	Platinum
Around View® Monitor					■
Bluetooth® Hands-free Phone System	■	■	■	■	■
Dual Zone Automatic Temperature Control (ATC) with in-cabin microfilter and rear vents	■	■	■	■	■
HomeLink® Universal Transceiver	■	■	■	■	■
Cruise control with illuminated steering wheel-mounted controls	■	■	■	■	■
Intelligent Cruise Control (ICC)			■	■	■
Active Noise Cancellation (ANC)			■	■	■
Active Sound Enhancement (ASE)			■	■	■
Auto-dimming inside rearview mirror	■	■	■	■	■
Nissan Intelligent Key® with Push Button Ignition	■	■	■	■	■
Remote Engine Start System with Intelligent Climate Control	■	■	■	■	■
Remote front windows down and trunk release via Nissan Intelligent Key®	■	■	■	■	■
Power door locks with auto-locking feature	■	■	■	■	■
Power windows with front window one-touch auto-up/down	■	■	■	■	■
Tilt/telescoping steering column	■	■	■	■	
Power-tilt/telescoping steering column					■
Vehicle speed-sensing variable intermittent windshield wipers	■	■	■	■	
Rain-sensing variable intermittent windshield wipers					■
Front map lights and rear LED reading lights	■	■	■	■	■
Adjustable ambient LED interior lighting			■	■	■
Dual illuminated visor vanity mirrors with sun visor extenders	■	■	■	■	■
Rear-window power sunshade					■
One 12-volt DC power outlet	■	■	■	■	■
Retained accessory power and battery saver	■	■	■	■	■
Overhead sunglasses storage	■	■	■	■	■
Front seatback pockets	■	■	■	■	■
Dual front cup holders and dual front bottle holders	■	■	■	■	■
Rear seat fold-down armrest with dual cup holders	■	■	■	■	■

■ Standard
□ Optional



¹Required SiriusXM® Satellite Radio, SiriusXM® Traffic and Travel Link® services subscriptions sold separately and are continuous until you call SiriusXM to cancel. Installation costs, one-time activation fee, other fees and taxes will apply. SiriusXM® Traffic and Travel Link® services available in select markets. Satellite Radio U.S. service and SiriusXM Travel Link® Services available only to those 18 or older in the 48 contiguous states and D.C. Fees and programming subject to change. Subscriptions governed by Customer Agreement available at siriusxm.com. ©2015 Sirius XM Radio Inc. Sirius,® XM® and all related marks and logos are trademarks of Sirius XM Radio Inc. HomeLink® is a registered trademark of Gentex Corporation. The Bluetooth® word mark and logo are owned by Bluetooth SIG, Inc., and any use of such marks by Nissan is under license.

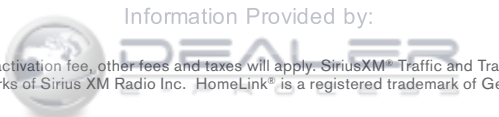
SPECIFICATIONS (CONTINUED)

Seating/Appointments	S	SV	SL	SR	Platinum
8-way power driver's seat	■				
8-way power driver's seat with power lumbar support		■	■	■	■
4-way power front-passenger's seat	■	■	■	■	■
Memory System – driver's seat, steering wheel and outside mirrors					■
Driver's seat manual thigh support extension		■	■	■	■
Heated front seats		■	■		
Climate-controlled front seats (heated and cooled)				■	■
Heated steering wheel			■	■	■
60/40 Split fold-down rear seatbacks with valet locking function	■	■	■	■	■
Cloth seat trim	■				
Leather-appointed seats		■	■		
Premium Ascot leather-appointed seats with diamond-quilted Alcantara® inserts				■	
Premium Ascot leather-appointed seats with diamond-quilted leather inserts					■
Leather-wrapped steering wheel	■	■	■		
Premium Ascot leather-wrapped steering wheel with Alcantara® insert				■	
Premium Ascot leather-wrapped steering wheel					■
Leather-wrapped shift knob	■	■	■	■	■
“Razor Steel” faceted trim	■	■	■		
“Liquid Chrome” faceted trim				■	
Mahogany wood-tone faceted trim					■
Aluminum sport pedals				■	

Audio/Entertainment	S	SV	SL	SR	Platinum
AM/FM CD audio system	■	■			
Bose® Premium Audio System with AM/FM/CD			■	■	■
Eight speakers	■	■			
11 Speakers, including center channel			■	■	■
MP3/WMA CD playback capability	■	■	■	■	■
Auxiliary audio input jack	■	■	■	■	■
Two USB connection ports for iPod® interface and other compatible devices	■	■	■	■	■
SiriusXM® Satellite Radio ¹	■	■	■	■	■
HD Radio	■	■	■	■	■
Streaming audio via Bluetooth® wireless technology	■	■	■	■	■
Radio Data System (RDS) and speed-sensitive volume control	■	■	■	■	■
Illuminated steering wheel-mounted audio controls	■	■	■	■	■

Safety/Security	S	SV	SL	SR	Platinum
Nissan Advanced Air Bag System with supplemental front air bags with seat belt and occupant-classification sensors	■	■	■	■	■
Driver and front-passenger seat-mounted side-impact supplemental air bags	■	■	■	■	■
Roof-mounted curtain supplemental air bags for side-impact and rollover head protection for front and rear-seat outboard occupants	■	■	■	■	■
Vehicle Dynamic Control (VDC) with Traction Control System (TCS)	■	■	■	■	■
Driver Attention Alert (DAA)					■
Blind Spot Warning (BSW)			■	■	■
Rear Cross Traffic Alert (RCTA)			■	■	■
Moving Object Detection (MOD)					■
Predictive Forward Collision Warning (PFCW)			■	■	■
Forward Emergency Braking (FEB)			■	■	■

Safety/Security (continued)	S	SV	SL	SR	Platinum
3-point ALR/ELR passenger seat belt system (ELR for driver)	■	■	■	■	■
Front seat belts with pretensioners and load limiters	■	■	■	■	■
LATCH System (Lower Anchors and Tethers for CHildren)	■	■	■	■	■
Zone Body construction with front and rear crumple zones	■	■	■	■	■
Energy-absorbing steering column	■	■	■	■	■
High-strength steel side-door guard beams	■	■	■	■	■
Hood-buckling creases	■	■	■	■	■
Tire Pressure Monitoring System (TPMS) with Easy-Fill Tire Alert	■	■	■	■	■
Nissan Vehicle Immobilizer System	■	■	■	■	■
Vehicle Security System (VSS)	■	■	■	■	■



¹Required SiriusXM® Satellite Radio, SiriusXM® Traffic and Travel Link® services subscriptions sold separately and are continuous until you call SiriusXM to cancel. Installation costs, one-time activation fee, other fees and taxes will apply. SiriusXM® Traffic and Travel Link® services available in select markets. Satellite Radio U.S. service and SiriusXM Travel Link® Services available only to those 18 or older in the 48 contiguous states and D.C. Fees and programming subject to change. Subscriptions governed by Customer Agreement available at siriusxm.com. ©2015 Sirius XM Radio Inc. Sirius,® XM® and all related marks and logos are trademarks of Sirius XM Radio Inc. HomeLink® is a registered trademark of Gentex Corporation. Bose® is a registered trademark of The Bose Corporation. The Bluetooth® word mark and logo are owned by Bluetooth SIG, Inc., and any use of such marks by Nissan is under license. iPod® is a registered trademark of Apple, Inc. All rights reserved. iPod not included.

DIMENSIONS/CAPACITIES

Dimensions – Inches

Exterior	
Wheelbase	109.3
Overall length	192.8
Overall width	73.2
Overall height	56.5
Track width (front/rear)	62.4

Aerodynamics – Cd

Drag coefficient	0.29 (0.30 for SR)
------------------	--------------------

Interior (front/rear)

Head room	39.4/36.7
Head room with Dual Panel Moonroof	38.9/35.8
Leg room	45.0/34.2
Hip room	54.2/53.5
Shoulder room	56.7/55.7

Capacities

Seating capacity	5
EPA interior passenger volume without moonroof (cu. ft.)	98.6
EPA interior passenger volume with moonroof (cu. ft.)	96.9
EPA cargo volume (cu. ft.)	14.3
Fuel tank (gals.)	18.0

Curb Weights – Lbs.

	S	SV	SL	SR	Platinum
Base total	3,471	3,488	3,533	3,564	3,593

2016 EPA Fuel Economy Estimates

City/highway/MPG combined	22/30/25
---------------------------	----------

Actual mileage may vary with driving conditions – use for comparison only.



73.2"



192.8"



56.5"

BUYING/OWNING



Nissan Motor Acceptance Corporation. Whether you're buying or leasing, you'll find attractive rates and flexible terms to make your purchase more accessible.

College Grad Program. Ask about our special new vehicle pricing available to individuals up to two years after graduation.

Active and Reserve US Military Program. Ask about eligibility for our fixed discount on new vehicle pricing available to those serving our country.

New Vehicle Limited Warranties. Protection for your new Nissan includes 3-year/36,000-mile (whichever occurs first) basic coverage and 5-year/60,000-mile (whichever occurs first) powertrain coverage. Terms, conditions and exclusions apply. See Warranty Information Booklet for complete details.

Security+Plus® For additional peace of mind, a variety of extended service plans lets you tailor the coverage to your driving habits.

Maintenance+Plus® This extended plan ensures your Nissan will receive up to 17 different services and over 33 different inspection items at each visit, using the most up-to-date diagnostic equipment available.

Genuine Nissan Parts. When it comes time for service, any necessary replacement parts will be made using Genuine Nissan new or remanufactured parts, or Nissan-approved parts. And they're the only parts to carry Nissan's factory-backed limited warranty.

Nissan Mobility Assist. This program offers reimbursements toward the purchase and installation of certain mobility assistance products for program-eligible Nissans. Go to NissanUSA.com/mobility for more info.

Thumbs Off Your Phone While Driving!

Every year, too many people die because we can't put our phones down while driving. That's why Nissan is supporting the Red Thumb Movement as part of our ongoing commitment to reduce fatalities on the road. So paint your thumbnail red as a reminder not to pick up your phone when you're behind the wheel. Find out more at NissanUSA.com/redthumb



Follow us: [@NissanSupport](https://twitter.com/NissanSupport)

At NissanUSA.com, you'll find virtual product demonstrations, a way to "build your own Nissan," a dealer locator, and more information about key Nissan support services. Or if you'd prefer, call **1-800-NISSAN-3** for answers to specific questions about Maxima® or any other Nissan vehicle. The Nissan names, logos, product names, feature names, and slogans are trademarks owned by or licensed to Nissan Motor Co. Ltd. and/or its North American subsidiaries. **Always wear your seat belt, and please don't drink and drive.** ©2015 Nissan North America, Inc.

This brochure is intended for general descriptive and informational purposes only. It is subject to change and does not constitute an offer, representation or warranty (express or implied) by Nissan North America, Inc. Interested parties should confirm the accuracy of any information in this brochure as it relates to a vehicle directly with Nissan North America, Inc., before relying on it to make a purchase decision. Nissan North America, Inc., reserves the right to make changes, at any time, without prior notice, in prices, colors, materials, equipment, specifications, and models and to discontinue models or equipment. Due to continuous product development and other pre- and post-production factors, actual vehicle, materials and specifications may vary from this brochure. Some vehicles shown with optional equipment. See the actual vehicle for complete accuracy. Availability and delivery times for particular models or equipment may vary. Specifications, options and accessories may differ in Hawaii, U.S. territories and other countries. For additional information on availability, options or accessories, see your Nissan dealer or contact Nissan North America, Inc.



Sign up for the latest news and updates on the 2016 Nissan Maxima®

or visit NissanUSA.com/maxima

Los folletos de Nissan también están disponibles en español.

Para descargar el PDF, visita:

NissanUSA.com/folletos-espanol

And follow Nissan on:

