



# Rocky Echoes

A publication from the Mississippi Gem and Mineral Society

A member of the American Federation of Mineralogical Societies & the Southeast Federation of Mineralogical Societies

## A Message from the President

MGMS Family,

WOW! What a Show! We have another successful Show to add to the books! A HUGE Thank You; to all of our members who volunteered in order for everything to run smoothly. It could not have been done without you! Our Assistant Show Chair, **Debbie Crow**; Dealer Chair, **Robert Lane**; our "Money Man," **Steve McFarland**; Ticket Chair, **John Rogers**; Membership Chairs **Rosina Echols** and **Leslie Lane**; as well as our Information Chair, **Sandra McFarland**; Volunteer Chair, **Sarah Spence**; Junior Chair, **Joy Rushing**; and Touch and See Chairs, **Kenny and Vonda Echols**; are to be commended for all of their hard work. Our Kitchen Staff, **Carol Harrison, Cathy Moore, Lisa Walton** and **Brian and Janis McDowell** worked many hours to ensure our Volunteers and Dealers had plenty to eat and drink to keep energy levels up. By the Way, the pulled pork **Sherri and Mike Mann** provided was phenomenal! Our Lapidary Demo Chair, **Donnie Chandler** and **All of our Jewelry Demonstrators** did a fantastic job at what they do best!

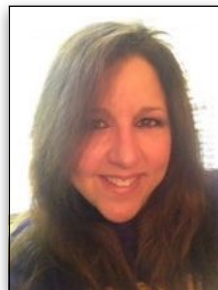
We had many new applicants to sign up for membership. Our Exhibits were awesome and media coverage was fantastic. All of the Vendors whom I spoke with were extremely pleased with the Show, our hospitality and the turn out. One of our new Dealer's stated it was the best Show they had ever had and they had been doing shows for years.

*I must give a special Thank You to our member **Jeff McCraw**; who provided our **Special Exhibit, The Artifact Shack**. The specimens **Jeff and his wife Pam** brought to the show and presented were perfect. So many people, of all ages, expressed their appreciation for the time and dedication it has taken for Jeff to have such a wonderful collection. Many had no idea that our State of Mississippi had so many riches to offer.*

Just a reminder Cabochon classes will resume soon. Classes are limited to three (3) students. We have decided to break down the classes offering Beginner, Intermediate and Recertification. If you are age 14 and up and interested in classes, please place your name on the sign-up sheet located at the School. Those who need to recertify or just need a refresher course will have a class on an hourly basis.

On March 25, 2017, MGMS will be hosting a regional DMC field trip to the Hammett Gravel Pit in Redwood, MS. **There is a limit on the number that can attend so you must register if you want to go on this field trip.** We have more information about the field trip, how to register, and information about the DMC field trip sharing program in the newsletter so keep reading!

I hope to see you all at the next General Meeting! *Carol Ishee, President*



President's Message	1
Next Meeting	2
Juniors at the Show	
Field Trip for March	3
Find Holy Rocks	5
Scavenger Hunt and Prizes	5
Members We've Lost	6
Show Kitchen	6
Cold Parsons Trip	7
April DMC Field Trip	8
Area Shows	
MGMS Affiliations	9
A Chance for Free Tuition	9
Calendar	10
School Class Information	11
Show Success and Challenge	12
Great Show Exhibits	12
Board Minutes - October	13
Board Minutes - January	14
About MGMS	16
Contact Information	16

## Welcome, new junior members!

*by Joy Rushing*

Junior members meet at 7:00 before each monthly meeting, and we hope all of you will take advantage of this opportunity. Come join us at our next meeting on March 24.

## Our Monthly Meetings *by John Rogers*

Meetings are usually held on the 4th Friday of the month at 7:30 p.m. People start gathering around 7:00 and Junior members have their own short meeting from 7:00 to 7:30. The monthly meetings include a short business/announcement session followed by a program. Drinks are provided by MGMS and snacks are provided by members as their schedules permit.

### Program for March 24

This will be an audience participation, interactive program so I need YOUR help for the March program to be a success. Pick out a favorite "BRAG ROCK" found on a rock hunt to show the new members what sorts of rocks can be in creek beds and gravel pits. What is that special "something" about this rock, fossil, or piece of petrified wood that you really like?

You, with the others in the room, will show that the variety of what people hunt for and like can really differ from one person to another. New members will get a chance to see the different kinds of rocks that can be found on field trips because every new rock hunter always asks, "What should I look for?" SO: \*\*\* *Bring your favorite rock hunt find to the March program.* \*\*\*

### April 28 Program Teaser

Sharon Honea has agreed to do the program for April 28. The title is still in the works, but Sharon has indicated that the subject will be landscaping with rocks. It sure sounds interesting to me. Sharon is always a fun and informative speaker. See you there.

## MGMS Junior Members Were Awesome at the Show!

*by Joy Rushing*

Wow! What a weekend we had at the Show! There were at least 16 junior members and 13 adults working one shift or more at our booth during the Show. At the risk of accidentally omitting someone, here is the list of our workers:

Jimmy, Faith, & Hope Baldree  
Lily Bell  
Greg & Maddie Britt  
Mary Beth Calhoun  
Diana Douglas  
Gina Eady  
Kaia & Skylar Gentry  
Cindy & Joe Hannah

Melissa Hill  
Lexi & Olivia Ishee  
Onni Lopez  
Sharon Martin  
Linda Moore  
Jan Nash  
Ricky (JR) Odom  
Anna Claire Oglesby

Brandon Owens  
Jonas Payne  
Cam Purvis  
Jim Roberts  
Joy Rushing  
Teresa & Galon Walter

Many of these individuals actually worked multiple shifts. Because of their tireless help, we were able to show dozens of our visitors how to make either a gem tree or a sand art bottle. Our youngest members were friendly and amazingly capable teachers as they helped us acquire funding for junior activities and educational materials to use during the coming year. Thanks everyone!

Field trips are the privilege of current members only. To participate in a field trip, dues must be received *before* the day of the field trip. Guests cannot be allowed on our field trips.

By Rosina Echols and Beverly Pettigrew Kraft



## March Field Trip

**Attendance Limit 80**

**Registration Required by March 22**

— Saturday, March 25, 2017 —

Hammett Gravel Pit, Redwood Site

Meeting time: 8:00 a.m.

Depart meeting site at 8:15 in caravan;  
Collect approximately 9:00 a.m. to 2:00 p.m.

**Many DMC out-of-state visitors and MGMS members have already registered.**

**ABOUT THE SITE:** This site is an active gravel pit producing sand and gravel for industries. Citronelle gravel is mined from a layer 40 feet below Ice Age loess soil. The site has igneous, metamorphic and sedimentary rocks. Expect to find agates, coral and other fossils, geodes, chunks of petrified wood and Sioux quartzite.

**REGISTRATION REQUIRED:** Registration deadline is Wednesday, March 22. A waiting list will be established when the attendee limit is reached. Contact: Rosina Echols: 601-825-5752 (landline) or [rosinae@bellsouth.net](mailto:rosinae@bellsouth.net). Those registering by email will receive a confirmation reply.

*If your plans change after you register, please contact Rosina to cancel so another person can attend.*

**WHERE TO MEET:** We will meet at 8:00 a.m. at the Chevron Truck Stop on the south side of I-20 at Exit 27 (Bolton exit). This is west of Jackson and Clinton / east of Vicksburg. Please sign in when you arrive.

At the meeting place, there will be drinks, snacks, some prepared breakfast/lunch food items, and restrooms. No stores or facilities are close to the collecting site. A portable toilet will be on the site.

Prior to departure, there will be a short discussion of the plans for the day. We will leave the truck stop at 8:15 a.m. If you have trouble the day of the trip, call Trip Leader David Kraft, 601-613-7360.

**WHAT TO BRING AND SITE CONDITIONS:** The collecting area will be limited to specific gravel piles that will be announced on site. These piles will be the "oversize rocks" culled from the commercial gravel. Participants must stay off equipment, away from slopes adjacent to ponds, out of ponds and away from loess walls.

Bring water, snacks and drinks. Pack a lunch if you expect to stay until 2 p.m. Bring gloves, hat, sunglasses, sunscreen and a chair. We'll hunt around and on tall piles of gravel. Bring a bucket, bag or backpack for collecting as you climb on the gravel piles. A walking staff is helpful but not necessary. Wear close-toed shoes to protect feet. If you need ankle support, wear hiking boots. An

extra pair of “muck” boots might be helpful if there is mud. Wear clothes that you won’t be afraid to get dirty and bring a change of clothes. Weather may be cold and/or windy. Bring a coat and dress in layers. Expect cold mornings and warm afternoons. If you have allergies or require medication, please bring your medication.

We will not park close to the hunt piles. Unless you are very selective, you will make multiple trips to your auto to deposit your finds to avoid potential injury. Footing on the gravel piles can be tricky. People who have stability issues should stay at the bottom of the gravel piles. It will still be good hunting. Walking and digging on steep slopes can lead to slides. Be aware that gravel slides are possible. Care must be taken when around the ponds. Stay away from the edge of rock piles against the ponds.

This is a remote area and there will be little or no cell phone reception. No stores or facilities are close to the collecting site. A portable toilet will be on the site.

**CHILDREN:** Adult supervision is required at all times. Children may not throw rocks or run at the site, especially on the gravel piles. Care should be taken when around the ponds. No climbing on equipment is allowed.

**REGISTRATION CONTACT:** Rosina Echols — 601-825-5752 (landline) or [rosinae@bellsouth.net](mailto:rosinae@bellsouth.net)  
(Those registering by email will receive a confirmation reply.)

**TRIP LEADER:** David Kraft — 601-613-7360 or [david@truckservicesms.com](mailto:david@truckservicesms.com)



**Must register to attend.**

**When the attendee limit is reached, a waiting list will be established.**



*Photos by Beverly Kraft*



Mississippi Gem and Mineral Society is the host club of the March regional field trip for DMC (Dixie Mineral Council) member clubs. The DMC Field Trip Program was established by the SFMS (Southeast Federation of Mineralogical Societies).

Currently, there are 31 DMC participating member clubs throughout the Southeast. Each month, one of these clubs hosts a field trip and current MGMS members are welcome to attend any and all DMC field trips.



### Dixie Mineral Council Field Trips

The Southeast Federation of Mineralogical Societies, Inc



The Friendly Federation - Founded in 1976 to serve  
DMC Program of the SFMS Field Trip Committee  
Copyright © All rights reserved.





Photos by Beverly Kraft except as noted

## All Rock Hounds Finding Holey Rocks *by John Rogers*

**Attention!** At this past show, the Touch and See table folks were giving away some necklaces made with holey rocks (Thanks to the member who dropped them off at the table!) Greg Britt's daughter got one and she has really enjoyed it. A larks head knot was used to attach a cord to a holey rock and it looks very sharp.

A lot of people just throw these holey rocks away; but they can be used as a giveaway at next year's show. Greg has volunteered to keep track of the rocks if you will get them to him.

## Scavenger Hunt and Prizes at the Show *by John Rogers*

*by John Rogers*

For the February Show, Derrall Moore supplied 100 bags of polished rocks for giveaway. Derrall had tumbled and bagged all of them thinking that kids at the Show would enjoy getting them. Ken Echols put the bags of polished rocks to use at the Touch and See table as prizes.

Friday night, Ken stayed late and developed something like a "scavenger hunt for information". He had a list of questions that sent kids to a number of different sites around the Show to get the answers. Ken focused on the kids getting answers from the special exhibitors and a number of the presenters commented about the increased activity at their displays. George Phillips from the Museum of Natural Science was particularly impressed. He kept saying, "I don't know how he knew what to ask. I only just set up the material Friday night. Until then, I wasn't sure about what I was going to have out."



The kids seemed to have a great time running around and finding the answers. The result was to make the show more fun and educational for the young people. Thanks Derrall and Ken. Your efforts made the show a much better experience. Not just for the children; but the parents appreciate that sort of thing.



Photo by Robert Lane

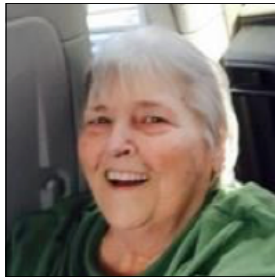
## Members We've Lost *by Rosina Echols*

MGMS recently lost two longtime members: Glender Brown and Betty James. Both of these ladies were instrumental in the our club's growth and success. Unfortunately, in recent years, they were less active so many of the newer members do not know them. Betty lived in Florence, Mississippi but Glender had moved the Godwin, North Carolina.

You only have to look through past newsletters and you'll find frequent references to these ladies and their hard work. In fact, Betty was instrumental in acquiring the primary property for our MGMS Lapidary School and helped with some of the physical labor in completing the building.

Glender and Betty enjoyed MGMS activities, tirelessly volunteered, and served MGMS in many capacities through the years. They shared their knowledge and enthusiasm about our hobby with so many others. They will be missed.

Glender S. Brown



October 11, 1942 — January 14, 2017

Betty M. James



August 31, 1943 — February 3, 2017

---

## 2017 Show Kitchen *By Carol Harrison*

We made it another year!!! We always worry that we will have enough food to serve and if there will be enough volunteers available to do all the work required to run our kitchen for three days at the Show. But the food was plentiful and we received so many compliments. At the Friday evening meal, we served 104 people — vendors, exhibitors, MGMS show setup workers, and other MGMS members who came just for the dinner. Our kitchen volunteers appeared early and we served the evening meal smoothly with all the help.

Many thanks go to our new members, Brian and Janis McDowell. These brave souls volunteered to work all three days in the kitchen and received a baptism by fire. Lisa Walton and Cathy Moore were invaluable again this year. They helped with all the planning and preparations (that take place for several months in advance) and worked throughout the weekend. Thanks to all our other helpers who came to help too. We couldn't do it without you.

All the donations of food made this great weekend possible, including the jambalaya, pulled pork (which was new this year), baked beans, chili, and assorted other items. It was all amazing.

What a pleasure it is to be involved with all our generous members. If you haven't been to our potluck dinner Friday night before the Show opens, you should come next year and enjoy the good food and fellowship.





## Cold takes a toll on Parsons, Tennessee quarry outing

By Beverly Pettigrew Kraft

The Vulcan Quarry is renowned for its fishing-in-a-bucket abundance of Devonian Age crinoid stems and shell fossils, but freezing temperatures proved to be a challenge at the Feb. 4 outing to the Parsons, Tenn., site.



*Nancy Roberts hunts in shale atop a tailings pile.*

Snow and rain forced cancellation of two previously scheduled trips in December and January with the North Mississippi Gem and Mineral Society. Ten days out from the February setting, I started watching the weather forecast for Parsons more closely than at home.

Holly Holton and I knew we were in for a rude awakening on the morning of the hunt. It turned out to be even colder than expected. As we gathered at the quarry office a few minutes after sunrise, another hunt participant said she saw 19 degrees on a bank sign.

The hunting area was tailings piles dumped in the mining operation. I found several partial trilobite fossils. The abundance of brachiopods allowed me to be picky. I gathered a

few. My main interest was crinoid stems. I am toying with the idea of wire wrapping some into a necklace. I have to figure out a natural dye. The shale fossils are dull gray.

I retreated to my truck several times that morning and turned on the heater. I found a second pair of gloves in the truck and double-gloved. The temperature climbed above freezing as the morning progressed. "I can finally feel my fingers," someone said. More than a foot of frozen mud began to thaw. Someone stepped on the no longer hard surface and sank halfway to his knees. About the time it got warm enough to be comfortable, it was time to go. We had to be out before 11:30 a.m.

After lunch in Parsons, we followed Nancy Roberts south to explore road cuts. On the ledges were chert nodules. Mike Schuchs explained that the fist-size and larger chunks of chert weather down as they are carried south in rivers. By the time they reach mid-Mississippi, they are chert gravel. Chert was used by the Native Americans to knap arrowheads and tools. Later that afternoon on a site overlooking the Tennessee River, we found knapped chert, likely the leftovers of a modern day knapper.

Also scattered about the eroding site were small, round fossilized sponges. "Sponge Bob," somebody said. "Square pants," came the reply. Grandparents know these things.



*Holly Holton explores a road cut.*

## MGMS Affiliations

by Rosina Echols

Our association with the Southeast Federation of Mineralogical Societies (SFMS) and the American Federation of Mineralogical Societies (AFMS) allow MGMS members to enjoy the many benefits provided by these organizations.

AFMS serves as the parent organization for seven regional Federations throughout the United States. Through its umbrella, hundreds of gem and mineral clubs and thousands of their individual members enjoy participating in national programs that promote education and involvement in the various earth science hobbies.

SFMS is one of the regional Federations and was organized to bring about a closer association of clubs in the Southeast. SFMS consists of about 80+ clubs from Alabama, Florida, Georgia, Mississippi, North Carolina, South Carolina, and Tennessee.

The SFMS newsletter is published monthly. *The Lodestar* is distributed free of charge electronically to interested, current members. Members should contact the Lodestar editor ([john@rasmussengems.com](mailto:john@rasmussengems.com)) to subscribe.

Two popular benefits of our SFMS affiliation are the SFMS Workshop Program and the Dixie Mineral Council (DMC) Field Trip Sharing Program.

**DMC Field Trips:** Field trips throughout the Southeast are hosted by gem and mineral clubs which are associated with the DMC Program. Our membership in this field trip sharing program allows MGMS members to participate in these regional field trips hosted by member clubs. For example, the March, 2017 DMC regional field trip is being hosted by MGMS. As I write this, nearly 40 out-of-state visitors have already registered for our trip. The April, 2017 DMC trip will be hosted by the Charlotte Gem and Mineral Club. DMC field trip information is published in our *Rocky Echoes* newsletter or you may contact the *Rocky Echoes* editor for trip details.

**SFMS Workshop Program:** The SFMS Workshop Program offers week-long, hands-on seminars reserved for current members of Southeast Federation affiliated clubs. The workshops are

held at the William Holland School of Lapidary Arts in Young Harris, Georgia and Wildacres Retreat in Little Switzerland, North Carolina. Classes are offered for every skill level. Both facilities hold non-federation classes which are open to everyone. Teachers and the type of classes offered vary each year.

More information about these organizations and programs offered can be found on the these websites:

AFMS: [www.amfed.org](http://www.amfed.org)

SFMS: [www.amfed.org/sfms](http://www.amfed.org/sfms)

SFMS Workshops: [www.sfmssworkshops.com](http://www.sfmssworkshops.com)

## Earn a Chance for Free Tuition

by Rosina Echols

Are you interested in taking a week-long lapidary or jewelry-making class? Are you interested in winning free tuition?

A "Rock Scholarship" was established by MGMS to encourage members to become involved in MGMS activities and as a "thank you" to those who do. The Scholarship is for paid tuition to a Southeast Federation sponsored workshop class or seminar.

Look at a MGMS Rock Scholarship Point Sheet form and see how easy it is to earn your chance to win. Details are on the Point Sheet form; but here's the information in a nutshell:

- Points have been assigned to MGMS activities such as attending a meeting or class, helping on work day, serving on a committee, and more. Throughout the calendar year, log the points that you earn on the Point Sheet form.
- Submit your completed Point Sheet form in January (but no later than the January monthly, general meeting).
- For each 40 points accrued, the name of the member will be entered one time in the Rock Scholarship drawing.

The more you're involved, the better your chance will be to win the Rock Scholarship tuition so participate in some or all MGMS activities. Another benefit of getting involved? You might make new friends and find new interests.



## SOME AREA SHOWS

### April 22-23, 2017

Memphis International Agricenter,  
7777 Walnut Grove Rd. Memphis, TN  
Memphis Mineral, Fossil, Jewelry Show  
"The Earth Wide Open"  
Memphis Archaeological and Geological Society  
Saturday, 9-6:00 and Sunday, 10-5,  
[www.theearthwideopen.com](http://www.theearthwideopen.com)

### May 28 - 29, 2016 (Memorial Day Weekend)

JOPPA Shrine Temple,  
13280 Shriners Blvd, Biloxi, MS  
Harrison County Gem & Mineral Society  
37th Anniversary Gem, Mineral & Jewelry Show  
Saturday, 9-5; Sunday, 9-4  
William Smith, Show Chair, (251) 937-3529  
[www.gulfportgems.org](http://www.gulfportgems.org) or e-mail:  
[gulfportgems@gmail.com](mailto:gulfportgems@gmail.com)

---

### DMC (Dixie Mineral Council) Field Trip

Official Field Trip of the Charlotte Gem and  
Mineral Club (Charlotte, NC) (HOST)

*An Official Field Trip of MGMS*

**Saturday, April 15, 2017**

**8:00 AM - 4:00 PM Eastern Time**

**Sharpes Emerald Prospect  
Alexander County, NC**

Release Form Required – Fee Site (See Details)

**TRIP:** Sharpes Emerald Prospect is operated in association with the Mountain Area Gem and Mineral Association (MAGMA). The club has been generous enough to allow CG&MC to host a field trip at their site. The mine is located in what is considered the most productive emerald mining district in North America. Emeralds are yet to be found, but there are current mineral finds of glass-clear tessin, smoky quartz, tourmaline, muscovite mica, beryl, and other minerals are in abundance. The mine is geared with rockhounds and collectors in mind, and is not salted with material from offsite.

**COLLECTING:** Mining and gathering can suit a variety of styles. Hard rock digging is available in pits and trenches throughout the site. Less rigorous collecting can be found by sifting and gathering in dump piles on the property. All areas of the mine are open to collectors and new areas are opened regularly.

**BRING:** Only hand tools are allowed on site – shovel, pick, hammer, chisel, etc. No power equipment or heavy machinery. Buckets, sifting screens, etc are also useful. Spring weather is unpredictable, so come prepared with season appropriate clothes, sensible footwear, protective eyewear, and raingear if the forecast indicates poor weather. No alcohol is allowed on site, and mine owners request that no garbage is left on the premises.

**REQUIREMENTS:** All visitors must pay fee and sign release form before digging. Disclosure forms and payment can be brought on day of field trip or sent in advance to:

Hiddenite Gems Investment Group,  
PO Box 542, Leicester, NC 28748

Release forms are available here:

<http://www.wncrocks.com/resources/Sharpes%20Emerald%20Prospect%20Release.pdf>

**SPECIAL CONDITIONS:** Protective equipment such as goggles/eyewear, boots & gloves are recommended.

**FEE:** \$25/day for adults, \$20 per day for MAGMA paid members. Children 12 years of age or younger are free but must be accompanied by guardian

**REGISTRATION:** Advance registration is not required, but release form must be completed.

**CHILDREN:** Yes, children are allowed, but anyone 12 years of age or under must be accompanied by adult.

**PETS:** No

**FACILITIES:** None - There is a gas station a mile down the road with bathrooms, drinks and snacks.

### DIRECTIONS AND WHERE TO MEET:

From I-40, take exit 132 toward NC-16. Follow NC-16 North to Hwy-64 East. Turn left on Prichard Lane. Look for sign saying "SHARPES" on right side of road by entrance to mine.

### CONTACT:

Prior to event, Sam Baker (704) 516-9649

On day of event: Murray Simon (704) 543-6651



## Calendar for March, 2017

Sun	Mon	Tues	Wed	Thursday	Friday	Saturday
<b>12</b> <i>Daylight Savings</i>	<b>13</b>	<b>14</b> Newsletter emailed to members	<b>15</b>	<b>16</b>	<b>17</b>	<b>18</b> School Open 9 am—3 pm  • Class— Scallop Wire Necklace
<b>19</b>	<b>20</b>	<b>21</b>	<b>22</b>	<b>23</b>	<b>24</b> ✧ Meetings at Lapidary School ▫ 6:00 Board ▫ 7:00 Junior ▫ 7:30 Program	<b>25</b>  Field Trip  * must register * (see pages 3-4)
<b>26</b>	<b>27</b>	<b>28</b>	<b>29</b>	<b>30</b>	<b>31</b>	

## Calendar for April, 2017

(Additional events may be published in April newsletter)

Sun	Mon	Tues	Wed	Thursday	Friday	Saturday
						<b>1</b> School Open 9 am—3 pm  <i>Deadline to Submit Newsletter Articles</i>
<b>2</b>	<b>3</b>	<b>4</b>	<b>5</b>	<b>6</b>	<b>7</b>	<b>8</b> School Open 9 am—3 pm  • Class— Right Angle Weave (RAW) Bracelet
<b>9</b>	<b>10</b>	<b>11</b>	<b>12</b>	<b>13</b>	<b>14</b>	<b>15</b> School Open 9 am—3 pm
<b>16</b>	<b>17</b>	<b>18</b> Newsletter emailed to members	<b>19</b>	<b>20</b>	<b>21</b>	<b>22</b> School Open 9 am—3 pm
<b>23</b>	<b>24</b>	<b>25</b>	<b>26</b>	<b>27</b>	<b>28</b> ✧ Meetings at Lapidary School ▫ 6:00 Board ▫ 7:00 Junior ▫ 7:30 Program	<b>29</b>  ✧ Field Trip
<b>30</b>						

## School Class Information

*by Rosina Echols*

Registration is required for all classes unless otherwise noted. To register, please contact the person shown in the class listing.

If you register for a class and find that you will be unable to attend, please contact the teacher prior to the class date. Your cancellation will allow someone on the waiting list to participate.

Class fees cover the cost of materials and/or equipment use plus \$1.00 to help cover school expenses.

Classes are taught by MGMS members who volunteer to share their skills. If you would like to volunteer to teach a class, please contact me at [rosinae@bellsouth.net](mailto:rosinae@bellsouth.net).

---

### **March 18 - Scallop Wire Necklace Class      Saturday 10:00      Cost: \$5**

Registration Deadline: March 17

Student Limit: 10

Instructor: Vonda Echols at: [vondaechols@att.net](mailto:vondaechols@att.net) or 601-259-8801

Students will turn wire, jump rings, and a closure into piece of jewelry using basic jewelry tools. This pattern is great for formal or casual attire.

- Bring your jewelry cutters and pliers—round-nose (that will be used to make simple loops) and 2 pliers to open jump rings (chain-nose or flat nose). Please note that jewelry tools do not have serrated edges. A limited number of tools will be available for students to borrow if necessary.



### **April 8 - Right Angle Weave Bracelet      Saturday: 10:00      Cost: \$5**

To register, contact instructor Sue Helfin at:

601-825-7737 or 601-260-8514 (cell) or email [sueh127@aol.com](mailto:sueh127@aol.com)

- If you came to the 2017 MGMS Gem Show, you may have seen this beaded bracelet demonstrated and this is your chance to make one for yourself. Since seed beads form much of the bracelet, you may wish to bring some type of magnification to the class.



### **Cabochon/Saw Classes – Beginner, Intermediate, and Recertification:**

Classes will resume in April. Details will be in the April newsletter. Please note that there is a waiting list for these classes. Anyone interested in any of these classes should place your name on the sign-up sheet located at the School.

The multi-session classes are limited to three (3) students. Students must be age 14 and up.

Those who need to re-certify (or just need a refresher course) will have class on an hourly basis.



## Another Successful Gem and Mineral Show and a Challenge *by Toy Cosper*

Those of us who worked for days and hours before the show and those who worked long hours at the show, left Sunday night very tired but with a feeling of satisfaction of a job well done. Carol Ishee earned our praise. She fills the role of President as well as Show Chair. A simple 'thank you' is not enough for all her midnight hours, miles traveled, and her encouragement to others.

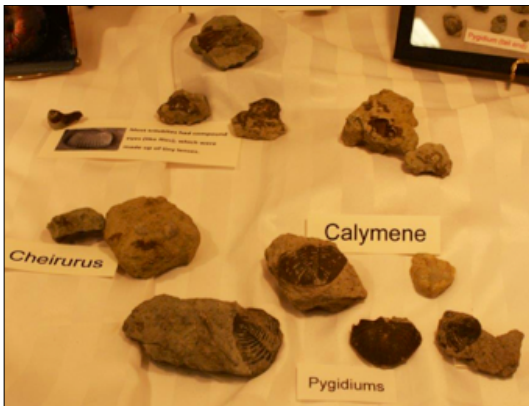


**I invite and challenge each member** to make a commitment to become involved in MGMS activities if you are not already. Start attending the monthly meetings and potluck meals we enjoy. Do you enjoy the monthly programs? Our Vice President John Rogers does a great job planning our programs. Be more appreciative of his efforts; and, if you have a program idea, make suggestions. Get involved on work days and volunteer to serve on a committee. Go on a field trip, take a class, and participate in other learning situations that are offered. I'm a former Board of Directors member and have served as a Show Committee Member. I still find that MGMS activities are interesting and informative. Don't miss another opportunity to learn something new.



## Great Show Exhibits *by Joy Rushing*

During the Show, we had eighteen exhibits presented by 16 individuals. These showcases really added a lot of interest to the show. We hope that next year these folks do another exhibit and many more of you will design and display your special treasures too. Thank you!



Nancy Roberts – Tennessee Trilobites

Debbie Crow – Crinoids

Greg Britt – (1) Creek Gravel (2) Native American Points

Kaia Gentry – Mississippi Fossils

Bryan McDowell - Petrified Wood From Rough to Cabochon

Donnie Chandler & Jean Cosper – Lapidary & Silverwork

George Phillips – Ceratopsian Tooth Discovery

Toy Cosper – "Holey Rocks" and Agates

James Starnes - (1) Mississippi Opal (2) Native Lithic Materials

Chick King – Hollow Petrified Log

Jesse & Sandra McFarland – Flint Knapping

Carol Ishee – Silicified Coral

Carol Harrison – MGMS Wirework & Beading Class Products

Joy Rushing – Agates

Reba Shotts – Faceted Stones

Buddy Shotts – Metal Gem Tree



---

MGMS Board meetings begin at 6:00 p.m. on the 4th Friday each month before the regular monthly program meeting and are open to all members. Any member who wishes to address the Board about a particular matter should contact the Secretary or President prior to the day of the meeting to have your idea or concern put on the agenda.

---

## **MGMS Board Meeting Minutes October 28, 2016**

*Submitted by Debbie Crow, Secretary*

Board members present: Horace Pezant, Carol Ishee, David Kraft, John Rogers, Robert Lane, Jean Cosper, Toy Cosper, Carol Harrison.

Meeting called to order by Horace Pezant at 6:05 p.m.

September Minutes were read, David Kraft motioned to accept as read and John Rogers 2<sup>nd</sup> All in favor; motion carried.

Membership: Leslie Lane presented two applications. The Garcia's asked to have their grandson added, Larry Tiller and wife applied for membership renewal. Robert Lane motioned to accept, David Kraft 2<sup>nd</sup> All in favor; motion carried.

Financial report: presented by Steve McFarland, Robert Lane motioned to accept as read, Carol Ishee 2<sup>nd</sup>. All in favor; motion carried.

### Old Business:

Container has been put in place. Shelving material to start with is being stored in the container with more needing to be purchased and installed.

### New Business:

Carol Ishee presented 2 new leads for future fieldtrips to 2 separate gravel pits. Carol will continue to follow up on this and report back to the Board of Directors.

Christmas and end of the year pot luck scheduled for December 2<sup>nd</sup> beginning at 6:30p.m., meal at 7p.m. The theme again is for each member to bring a Christmas tree ornament to exchange and auctions will be held throughout the evening for other items. A short Board/Show meeting will be held at 5:30 that evening prior to the festivities.

November Newsletter will cover November, December, and January.

Carol Ishee will be representing MGMS at the SFGMS show in Georgia on November 18,19,20. The board agreed to pay for gas, lodging, food and show fees for this event.

A budget of \$1,200.00 was approved by the Board of Directors for the instillation and equipment needed to provide internet service to the MGMS building. Access to the internet will be password protected.

No other business Jean Cosper motioned to adjourn, Sandra McFarland 2<sup>nd</sup>, all in favor meeting adjourned at 6:55p.m.

## **Addendum to the MGMS October Board Meeting October 28, 2016**

General meeting vote results for 2017 Officers, Board of Directors Members, Newsletter Editor/Webmaster positions.

Vice President John Rogers presided over the annual election of 2017 positions at the general meeting on October 28, 2016. The slate of nominees proposed by the Nominating Committee and published in the October, 2016 newsletter was read to those members attending the general meeting. John then called for any nominations from the floor.

With no nominations from the floor and no changes from the proposed slate of nominees for Officers, two (2) Board of Director members, Newsletter Editor/Webmaster, the slate of nominees was presented to the attending members as uncontested, for a vote. Robert Lane made the motion to accept the nominees presented. The motion was seconded by Steve McFarland. The membership present unanimously voted to elect the following to fill the 2017 positions:

Officers:

President ----- Carol Ishee  
Vice President ----- John Rogers  
Secretary ----- Debbie Crow  
Treasurer ----- Steve McFarland  
Membership Secretary ----- Leslie Lane  
Show Chairman 2018 ----- Carol Ishee

Board of Directors Members:

Term to expire December 31, 2019 ----- Robert Lane  
Term to expire December 31, 2019 ----- Derrall Moore

Other Elected Positions:

Newsletter Editor/Webmaster ----- Rosina Echols

---

## MGMS Board Meeting Minutes January 27, 2017

*Submitted By Debbie Crow*

Those present: Carol Ishee, Steve McFarland, Robert Lane, John Rogers, Sandra McFarland, Leslie Lane, Carol Harrison, David Kraft, Jean Cosper, and Debbie Crow. Toy Cosper was resent as a guest.

Meeting was called to order by Carol Ishee at 6:12p.m.

Financial Report presented by Treasurer Steve McFarland for the months of October and December, no meeting was held in November. Robert Lane made a motion to accept both reports as read and David Kraft 2<sup>nd</sup> the motion. All in favor, motion carried.

Membership: Leslie Lane presented 2 new applicants for membership. Steve McFarland made the motion to accept both applicants, David Kraft 2<sup>nd</sup>, all in favor motion carried.

New Business:

Carol Ishee presented the reimbursement to Horace Pezant for the conex container. Steve McFarland proposed to pay Horace Pezant in full after the MGMS 2017 Show, all were in favor for this proposal.

Mailbox: Robert Lane repaired the school mailbox, Steve McFarland spoke with Post Master and arrangements were made on placement of mailbox and delivery of mail. The mail will be delivered on Friday only and the mailbox will be placed out only on that day. Mail carrier has been notified.

Internet: The installation was held up due to cable company requires monthly payments to be placed on auto draft. Robert Lane made the motion to initiate this process, John Rogers 2<sup>nd</sup>, all in favor motion carried. Rosina Echols with Steve McFarland will arrange this through Regions bank where the MGMS has its account.



Steve McFarland proposed to move \$500.00 from Regions MGMS banking account to the Regions school account to bring the balance of this account to \$2000.00 thus avoiding the \$15.00 penalty fee for having a low balance of less than \$2000.00 in the school account. Sandra McFarland made the motion to implement this action, John Rogers 2<sup>nd</sup>, all in favor motion carried.

Monitor Rotation: Carol Ishee brought up the need for more volunteers to be monitors on Saturdays when the school is open for members to come in and use equipment. Steve and Sandra McFarland offered to be available on an as needed basis. Carol Ishee will continue to inquire for qualified members to be monitors.

Field Trip Coordinator: Donny Chandler has resigned as Field Trip Coordinator due to conflict with his job.

William Holland: Carol Ishee proposed for MGMS to send three (3) individuals this year. Carol Harrison made the motion to accept this proposal, John Rogers 2<sup>nd</sup>, all in favor motion carried.

DMC Field Trip: The upcoming field trip for March is a DMC sanctioned trip, hosted by MGMS. DMC requires phone number, email, and name of the person in charge of this trip. David Kraft's info will be forwarded to them.

With no old business to discuss meeting was adjourned at 6:59 p.m. by Carol Ishee. Jean Cosper made the motion to accept, Robert Lane 2<sup>nd</sup>, motion carried. Meeting adjourned.

### Addendum to January 27, 2017 Board of Directors meeting minutes:

#### Constant Contact Vote via Email — December, 2016

<i>2016 Board</i>	<i>Yes</i>	<i>No</i>	<i>Comments</i>
Horace Pezant, President — —			
John Rogers	x		
Steve McFarland	x		
Carol Ishee	x		
Debbie Crow	x		
(Carol Ishee-1 vote)			
Carol Harrison	x		
David Kraft	x		
Sandra McFarland	x		
Robert Lane	x		
Jean Cosper		x	Prefers printed, mailed newsletters
Toy Cosper		x	Prefers printed, mailed newsletters

<i>2017 Board</i>	<i>Yes</i>	<i>No</i>	<i>Comments</i>
Carol Ishee, President — —			
John Roger	x		
Steve McFarland	x		
Debbie Crow	x		
Leslie Lane	x		
(Carol Ishee—1 vote)	x		
Carol Harrison	x		
David Kraft	x		
Sandra McFarland	x		
Robert Lane	x		
Derrall Moore	x		
Jean Cosper		x	Prefers printed, mailed newsletter

(Editor's note: This vote was to determine continued use of the mail service Constant Contact to deliver newsletters and communications to members.)

## Some information about MGMS

Visit the MGMS website ([www.missgems.org](http://www.missgems.org)) for more information about MGMS, membership applications, and detailed directions to the MGMS Lapidary School.

The MGMS membership year is January through December. **Membership dues** are \$20 per adult and \$5 for each child (minimum age 8) who meet the Junior member classification requirements.

**Regular meetings are held at the Lapidary School at 7:30pm on the 4th Friday** each month with these exceptions: *February* (the annual Show replaces our monthly meeting), *November and December*. (In early December, a potluck dinner is held to celebrate the holidays). Sometimes we take a summer break in June or July so refer to the newsletter calendar).

**The MGMS Lapidary School is located at 176 Tazan Avenue, Florence, MS 39073.** Although the address is Florence, the School is located in a residential area just south of Richland. It doesn't matter if you're traveling Highway 49 from the north or the south—look for the Texaco Station in south Richland (across from the Tractor Supply Store) and *turn west onto Cleary Road*. Go past the cemetery .4 mile and turn left onto Marie Drive. Turn right at the next street (Tazan Avenue). The School is located .4 of a mile on the right side of the road at 176 Tazan. The School is the only industrial type building on this street. There is no building sign—please note the street address.

**Lapidary School hours** are Saturdays 9am to 3pm except the Saturday of the field trips and major holidays. Additional School hours and closings will be posted in the Rocky Echoes calendar.

**Field trips are scheduled on the Saturday following the 4th Friday** March through September. Field trips are a privilege of current members only.

**The MGMS Gem, Mineral, Fossil, and Jewelry Show** is held in late February in the Trade Mart at Mississippi State Fairgrounds on High Street in Jackson.

Our affiliations with **Southeast Federation of Mineralogical Societies (SFMS)** and **American Federation of Mineralogical Societies (AFMS)** allow MGMS members to enjoy many programs and benefits provided by these organizations including regional field trips and workshops.

The Mississippi Gem and Mineral Society was organized and shall be operated exclusively to promote the study of the earth sciences and allied arts; to help preserve the ecological heritage of our world; and to promote good fellowship and friendship among others of similar interests.

MGMS does not discriminate on the basis of race, creed, religion, color, sex, or sexual orientation.

## MGMS BOARD MEMBERS

### OFFICERS

#### President

- Carol Ishee  
izzie1259@aol.com — 601-497-2938

#### Vice-President

- John Rogers  
brogers1@bellsouth.net — 601-981-9362

#### Secretary

- Debbie Crow  
deblbcrow@bellsouth.net — 601-529-4121

#### Treasurer

- Seve McFarland  
s.mcfarland1@comcast.net - 601-540-0729

#### Membership Secretary

- Leslie Lane  
rock2lanes@gmail.com — 601-344-8171

#### Show Chair (for 2017 Show) (2018 Chair)

- Carol Ishee  
izzie1259@aol.com — 601-497-2938

### BOARD OF DIRECTORS

#### *Term expires December 31, 2017*

- Jean Cosper  
601-854-7855 (landline)
- David Kraft  
david@truckservicesms.com - 601-613-7360

#### *Term expires December 31, 2018*

- Carol Harrison  
charrison1980@aol.com — 601-613-7609
- Sandra McFarLand  
s.mcfarland1@comcast.net - 601-540-0730

#### *Term expires December 31, 2019*

- Robert Lane  
601-507-2252
- Derrall Moore  
wdmtexas1@icloud.com — 601-573-6146

### ADDITIONAL CONTACT INFORMATION

#### • Immediate Past President

Horace Pezant  
hpezant@yahoo.com - 601-276-2203 (landline)

#### • Field Trip Coordinator

David Kraft  
david@truckservicesms.com - 601-613-7360

#### • Junior Leader

Joy Rushing  
rocking.around48@gmail.com - 601-672-5179

#### • Editor and Website Manager

Rosina Echols  
rosinae@bellsouth.net - 601-825-5752 (landline)