

FREDDIE ARCHERY

www.freddiearchery.com



2017 PRODUCT CATALOG

TRADITIONAL BOWS & ACCESSORIES

Enjoy your shooting!

Contents

| | |
|------------------------------|----|
| HORN BOWS | 4 |
| BAMBOO BOW | 6 |
| KTB_LAMINATED | 7 |
| KTB_HUNTING | 12 |
| YOUTH & KIDS BOWS | 14 |
| BOW SET | 17 |
| KTB BAMBOO ARROW | 18 |
| KTB ARROWS | 20 |
| KTB BELT(GUNGDAE) | 21 |
| THUMB RING | 21 |
| KTB GLOVE | 24 |
| KTB STRING | 25 |
| KTB ARM GUARD | 25 |
| KTB QUIVER | 26 |
| KTB BOW CASE | 27 |
| KTB BOOKS | 28 |
| ACCESSORIES | 29 |

HORN BOW

*Natural
Material*



**AUTHENTIC
KOREAN HORN BOW**



TAEGEUK HORN BOW

BAMBOO BOW

*Natural
Material*



SMG BAMBOO BOW

KTB_LAMINATED



Oak Pattern

Snake Leather Pattern

SONG MU GUNG(SMG BOW)

KTB_LAMINATED



NOMAD KTB



TAEGEUK KOREAN BOW



BLACK SHADOW



KTB KINGDOM



ZENITH

KTB_HUNTING



LEGEND BOW



PHOENIX

YOUTH & KIDS BOW



BRAVE KIDS BOW



GURU



BAMBOO CHILDREN BOW(TOY)

AUTHENTIC KOREAN HORN BOW

Authentic Korean Horn Bowyer of Mr. KIM, Seok-Jae (Master-Expert Archer, Kwangju Gakgung) has been a family owned and manufactured a succession of four descents. With over 50 years of experience in the Horn Bow manufacturing. Back in the 1960s, authentic Korean horn bow weren't afraid to show off their goods. Bowyer Mr.KIM, Seok-Jae added to the classic technology for cushioning and stability. Today, He has revamped his Horn Bow for everyone's style, keeping that technology intact.



AUTHENTIC KOREAN HORN BOW SPECIFICATION

Bowyer : KIM, Seok-Jae (Master-Expert Archer)

Company : Gwangju Gakgung

Materials : Bamboo, Water Buffalo Horn, Sinew, Wood, Fish Air Bladder Glue, Birch Bark

Bow Length : 47"

Draw Weight : 40 / 45 / 50 / 55 / 60# @31"

String : Fast Flight String

Type : RH or LH

Recommended Brace Height : 5.5-6"(14-15cm)

Gross Weight : 332.5g / 0.73lb

Max Draw Length : 31.62"(80.3cm)

* FF String Included



TAEGEUK HORN BOW

(Gakgung, 角弓)

Taegeuk Horn bow is made by Korean master-level bowyer Mr. CHO, Young-Seok, with water buffalo horn material on its belly. It minimizes the vibration and maximizes the elasticity. Horn has better elasticity than other materials and can be durable for many years. It will be the best bow for archer who loves archery.



TAEGEUK HORN BOW SPECIFICATION

*Natural
Material*

Bowyer : CHO, Young-Seok (Master-Expert Archer)

Company : Taegeuk Archery

Materials : Horn, Sinew, Wood, Carbon, Glass Fiber, Epoxy Glue, Birch Bark

Bow Length : 49"

Draw Weight : 35 / 40 / 45 / 50 / 55# @31"

String : Fast Flight String

Type : RH or LH

Recommended Brace Height : 5.5-6"(14-15cm)

Gross Weight : 395.5g / 0.87lb

Max Draw Length : 32.21"(81.8cm)

* FF String Included

* It is good to apply the camellia oil or olive oil on the birch bar for the protection of surface.



HORN BOW



SMG BAMBOO BOW

(Jukgung, 竹弓)



*Bow Case Included



*Bow Cover-belt Included

The core material of this bow is natural bamboo, which absorbs shock completely just like the traditional waterbuffalo horn bow. The natural pattern of bamboo retains high-grade of dignity of the bow in the appearance. Flight distance of each arrow is almost constant, not too long not too short.

SMG BAMBOO BOW SPECIFICATION



- Bowyer : PARK, Do-Min
- Company : Songmugung
- Materials : Bamboo, Wood, Epoxy Glue, Birch Bark
- Bow Length : 47", 50"
- Draw Weight : 35 / 40 / 45 / 50 / 55 / 60# @31"
- String : Fast Flight String
- Type : RH or LH
- Recommended Brace Height : 5.5-6"(14-15cm)
- Max Draw Length : 47"- 31.62"(80.3cm) / 50"- 32.21"(81.8cm)

* Bow Case, Bow Cover-belt, FF String Included

* It is good to apply the camellia oil or olive oil on the birch bar for the protection of surface.



* Bowyer of Songmugung : PARK, Do-Min



BAMBOO BOW

SONG MU GUNG (SMG BOW)



Oak Pattern

Snake Leather Pattern

*Bow Case Included

*Bow Cover-belt Included

The belly is made from a special material of carbon, it is quite durable. The excellent flexibility and restoring force as well as the easy maintenance are all the merits of this laminated version.

SONG MU GUNG SPECIFICATION

Bowyer : PARK, Do-Min

Company : Songmugung

Materials : Wood, Carbon, Glass Fiber, Epoxy Glue, Oak Pattern or Snake Leather Pattern

Bow Length : 44", 47", 50"

Draw Weight : 30 / 35 / 40 / 45 / 50 / 55 or 60# @31"

String : Fast Flight String

Type : RH or LH

Cover Type : Oak Pattern / Snake Leather Pattern

Recommended Brace Height : 5.5-6"(14-15cm)

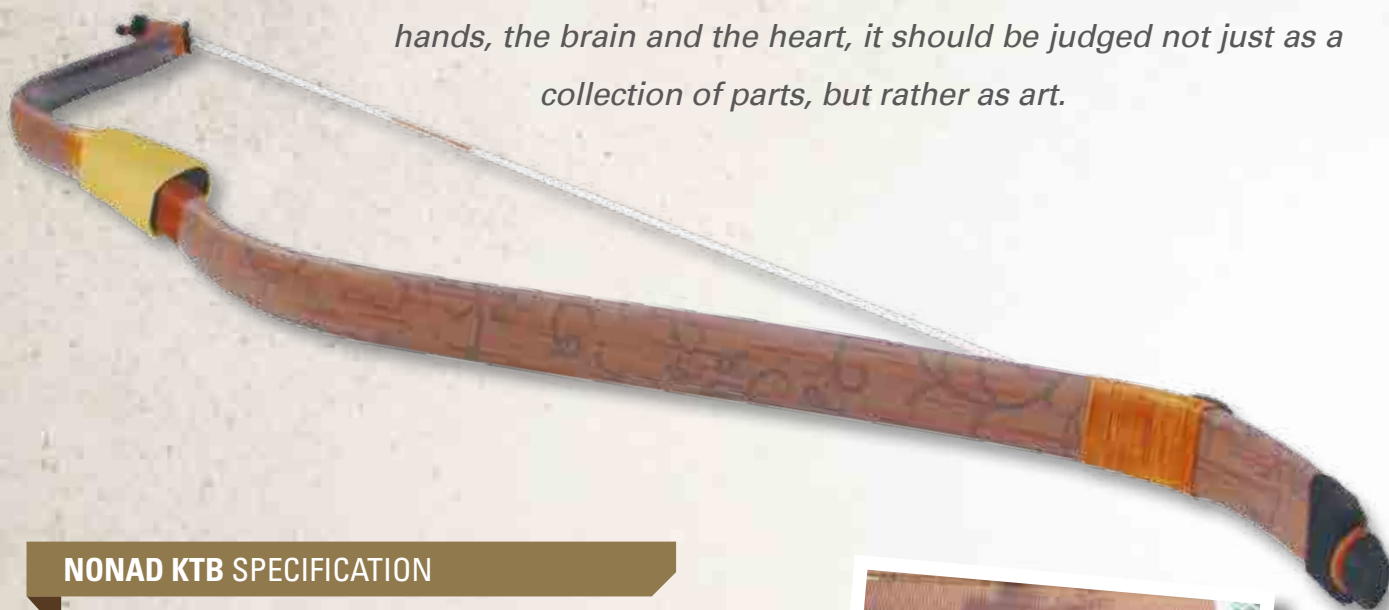
Max Draw Length : **44"**- 30.42"(77.2cm) / **47"**- 31.62"(80.3cm) / **50"**- 32.21"(81.8cm)

* Bow Case, Bow Cover-belt, FF String Included



NOMAD Korean Traditional Bow

Nomad KTB is the Korean Traditional Bow by Freddie Archery, a Korean manufacturer of Korean Traditional Bows. As such we have had much experience with Korean Traditional Archery and Bows. Craftsmanship goes beyond mere technical quality. This collection will feature works that represent the spirit and skill. Coming from the hands, the brain and the heart, it should be judged not just as a collection of parts, but rather as art.



NONAD KTB SPECIFICATION

Bow Length : 44", 48", 53"

Draw Weight : 15 / 20 / 25 / 30 / 35 / 40 / 45 / 50 / 55 / 60# @31"

String : Fast Flight String

Type : Shoot either RH or LH users

Recommended Brace Height : 5.5-6"(14-15cm)

Gross Weight : 370g / 0.81lb

Max Draw Length : 44" - 30.42"(77.2cm) / 48" - 31.62"(80.3cm) / 53" - 33.40"(84.8cm)

* FF String Included

* 44" is available until 30 poundage

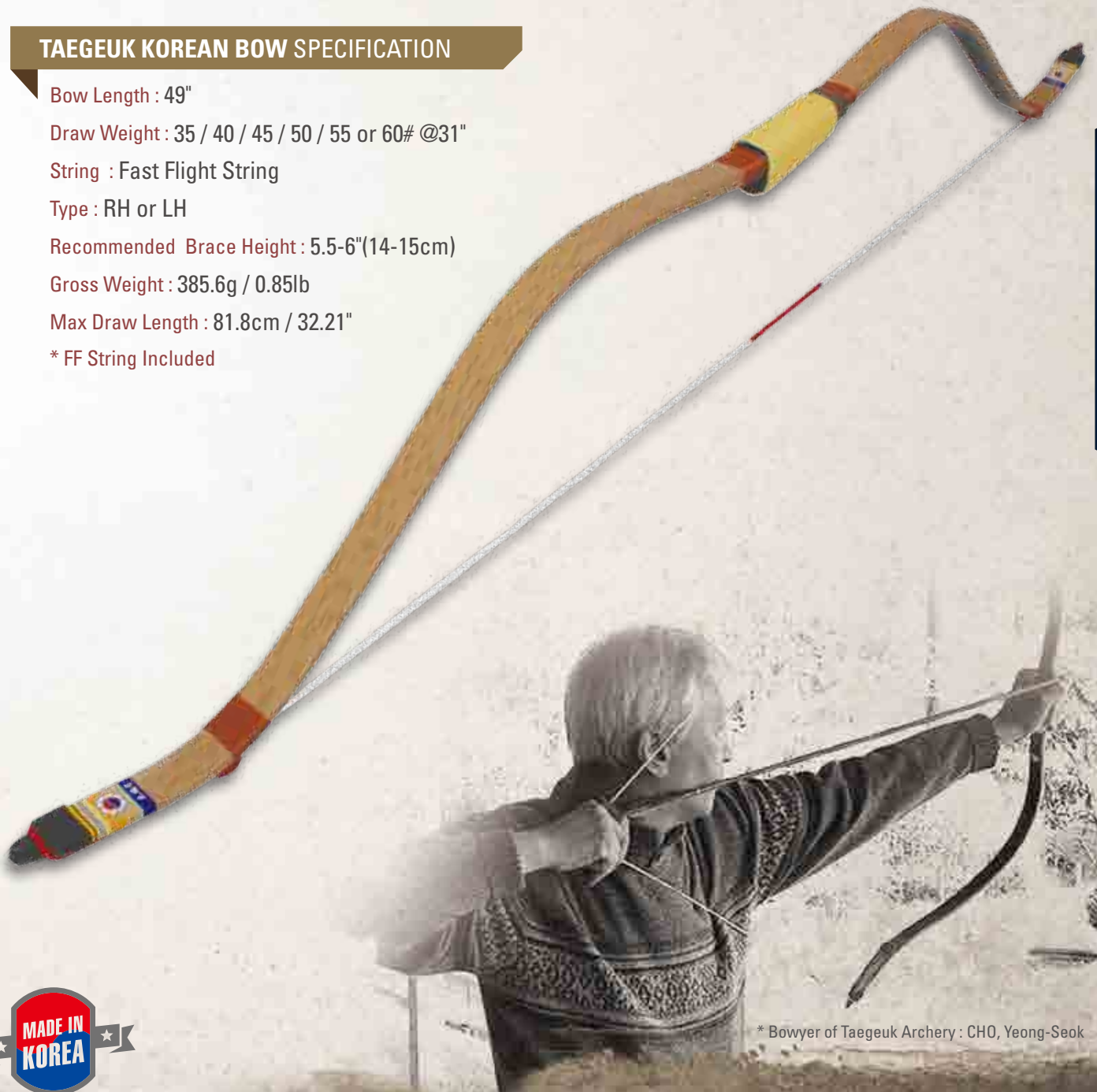


TAEGEUK KOREAN BOW

Taegeuk Korean Bow is fully hand-made by Korean bowyer, Mr. Cho Yeong-seok. So it has a clean finish and is solid and shows good performance. When shooting, the vibrations are not transferred to the bow arm because the grip part absorbs it. You can feel the beauty of Korean traditional graphic.

TAEGEUK KOREAN BOW SPECIFICATION

- Bow Length : 49"
- Draw Weight : 35 / 40 / 45 / 50 / 55 or 60# @31"
- String : Fast Flight String
- Type : RH or LH
- Recommended Brace Height : 5.5-6"(14-15cm)
- Gross Weight : 385.6g / 0.85lb
- Max Draw Length : 81.8cm / 32.21"
- * FF String Included



KTBLAMINATED



* Bowyer of Taegeuk Archery : CHO, Yeong-Seok

BLACK SHADOW

Black Shadow range of traditional bow features a striking pallet of black and offers a graceful curve. Classified as a curve shape, the outline is full and generous from tip to grip providing maximum stability. The rounded maintains ample surface area through the front of the bow and allows the archer to comfortably shoot their arrow forward. With Matt version of Black shadow, you can enjoy impressive feeling that is different from glossy type. This black-colored edition gives more simple, more refined and more luxurious feeling.

KTB_LAMINATED



BLACK SHADOW BOW SPECIFICATION

Bow Length : 44", 48", 53"

Draw Weight : 15 / 20 / 25 / 30 / 35 / 40 / 45 / 50 / 55 / 60# @31"

String : Fast Flight String

Type : Shoot either RH or LH users

Finish Type : Glossy Type / Matt Type

Recommended Brace Height : 5.5-6"(14-15cm)

Gross Weight : 330g / 0.72lb

Max Draw Length : **44"** - 30.42"(77.2cm) / **48"** - 31.62"(80.3cm)
53" - 33.40"(84.8cm)

* FF String Included

* 44" is available until 30 poundage



KTB KINGDOM

It has a wide grip of black color and take curved shape for adding elegance on Korean traditional bow. The finish of grey fabric is emphasized tradition and classic. It is strong and fast as special feature of Korean traditional bow.



KTB LAMINATED

KTB KINGDOM BOW SPECIFICATION

Bow Length : 44", 48", 53

Draw Weight : 15 / 20 / 25 / 30 / 35 / 40 / 45 / 50 / 55 / 60# @31"

String : Fast Flight String

Type : Shoot either RH or LH users

Recommended Brace Height : 5.5-6"(14-15cm)

Gross Weight : 311g / 0.68lb

Max Draw Length : **44"** - 30.42"(77.2cm) / **48"** - 31.62"(80.3cm)
53" - 33.40"(84.8cm)

* FF String Included

* 44" is available until 30 poundage



ZENITH

With black grip on white limbs, it well contrast and has feeling flexible but strong. The wood what can see from side of limbs is refreshing.



ZENITH BOW SPECIFICATION

- Bow Length : 44", 48", 53"
- Draw Weight : 15 / 20 / 25 / 30 / 35 / 40 / 45 / 50 / 55 / 60# @31"
- String : Fast Flight String
- Type : Shoot either RH or LH users
- Recommended Brace Height : 5.5-6"(14-15cm)
- Weight : 315g / 0.69lb
- Max Draw Length : 44"- 30.42"(77.2cm) / 48"- 31.62"(80.3cm)
53"- 33.40"(84.8cm)
- * FF String Included
- * 44" is available until 30 poundage

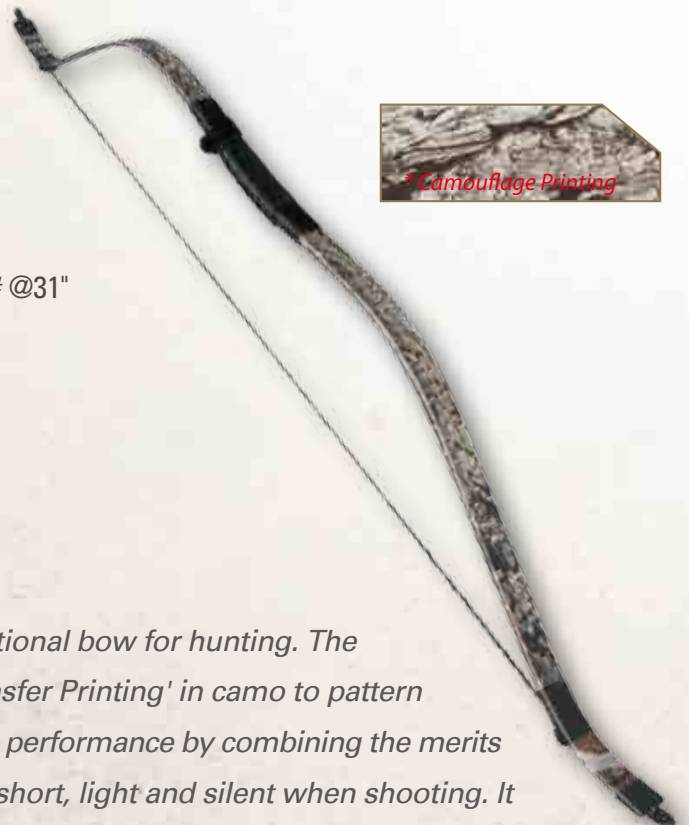
PHOENIX

PHOENIX CAMO BOW SPECIFICATION

- Bow Length : 48"
- Draw Weight : 15 / 20 / 25 / 30 / 35 / 40 / 45 / 50 / 55 / 60# @31"
- String : Fast Flight String
- Type : RH or LH
- Recommended Brace Height : 5.5-6"(14-15cm)
- Gross Weight : 333.5g / 0.73lb
- Max Draw Length : 31.62"(80.3cm)
- * FF String Included



* Camouflage Printing

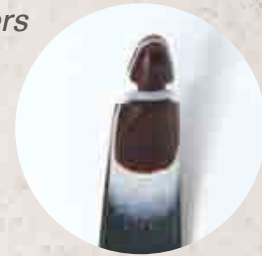


Phoenix Camo Bow is Korean traditional bow for hunting. The surface was painted by 'Water Transfer Printing' in camo to pattern for hunting. The bow maximizes its performance by combining the merits of Korean traditional bow which is short, light and silent when shooting. It will be the best bow for Hunter.



LEGEND BOW

The Legend Bow, the special edition designed for special archers is part of the Freddie Archery collection. It picks up on the same codes, the elegant design with powerful performance. For a good shooting, and to add an edge to the look, finish is black matt plated. The inside of the belly is the signature of Old Mountain. This is with an ultra-connected generation, which has an experience for beauty and is looking for an exclusive design. We bet this special edition will bring a great for many a target.



**Stable Hunting Bow
Stability & Smoothness
Modern Simple type**

LEGEND BOW SPECIFICATION

Bow Length : 50"

Draw Weight : 15 / 20 / 25 / 30 / 35 / 40 / 45 / 50 / 55 / 60# @31"

Materials : Walnut Wood, Ash Wood, Hard Maple Wood, Black Glass Fiber

String : Dacron String

Type : Shoot either RH or LH users(Three Finger Shooting)

/ Not allow the thumb shooting

Gross Weight : 325g / 0.71lb

* Dacron String Included

KTB_HUNTING

BRAVE KIDS BOW

Need a bow for your little archer in your home?
We have a range of bows for your valued boys and girls.
This Brave Kids Bow can help your children get an early start in archery. Enjoy archery with your Kids.



BRAVE KIDS BOW SPECIFICATION

- Bow Length : 28"
- Draw Weight : 10#
- String : Dacron String
- Age : Under 10 Years Old
- Arrow Flight Length : 15m
- Type : RH or LH / Shoot either RH or LH users
- Gross Weight : 112.5g / 0.24lb
- * Dacron String, Arrow Rest, Arrows, Bow Case included



Brave Kids Bow : 70 cm

GURU

The Nomad Guru Youth Bow is perfect bow for youths of any ability. It is designed for beginners all the way to advanced ability levels. Ergonomics design of grip offer stellar comfort while learning to gripping and shooting. The carbon laminated base offers incredible support. Get on the field to the pros with the Nomad Guru Youth Bow.

GURU YOUTH BOW SPECIFICATION

- Bow Length : 44"
- Draw Weight : 15 / 20 / 25 or 29# @31"
- String : Fast Flight String
- Type : RH or LH
- Recommended Brace Height : 5.5-6"(14-15cm)
- Gross Weight : 243g / 0.53lb
- Max Draw Length : 30.42"(77.2cm)
- * FF String Included



YOUTH & KIDS BOW

BAMBOO CHILDREN BOW (TOY)



Bamboo Children bow + 3 Arrows



STRING • SHOOTING

The draw weight marked on the limbs is measured at a 31" standard of Korean Traditional Archery Association.

NOMAD KTB Draw Length

| Bow Length | 44" | 48" | 53" |
|-----------------|----------------|----------------|----------------|
| Max Draw Length | 30.42"(77.2cm) | 31.62"(80.3cm) | 33.40"(84.8cm) |

KTB Brace height Range : 5.5-6"(14-15cm)



1.

Attach the bowstring to the top limb tip of your bow. With one hand hold the bowstring in place.



2.

Step through your bow and rest the lower limb over your thigh while holding the loose end of the string with your free hand.



3.

Pull the top limb forward while bending down toward the lower limb tip. Hold the limb firmly to prevent it from twisting from side to side.

Place the lower end of the bowstring over the limb tip. Check both ends for proper string positioning and step back out through the bow.



4.

Find the center of the bow string. Measure 2.5" up. At that point wind with dental floss or thin serving material upward approx. 1/2", two layers deep or to fit the arrow nocks snugly (you will be nocking your arrow on the serving material) then tie off. These bows require a higher than normal nock point.



5.

Nock your arrow on the string with the arrow on the right side of the bow. Next wrap your thumb around the bowstring directly under the arrow. Your index finger should hold your thumb and also press against the arrow shaft to help keep it pressed against the bow.



6.

Extend your bow arm and raise it above the target. Draw the bow string to a similar anchor position shown above. To release the string simply open and relax your thumb and index finger while continuing to hold tension.

BOW SET

Component

KTB Bow Case + Bow & String + 3 KTB Arrows + Glove or Thumb Ring + Bow Cover(belt)

TAEGEUK HORN BOW SET / SMG BAMBOO BOW SET / SONG MU GUNG SET

NONAD KTB SET / TAEGEUK KOREAN BOW SET / BLACK SHADOW BOW SET

KTB KINGDOM BOW SET / ZENITH BOW SET / GURU YOUTH BOW SET



KTB Bow Case



Bow & String



3 KTB Arrows



or

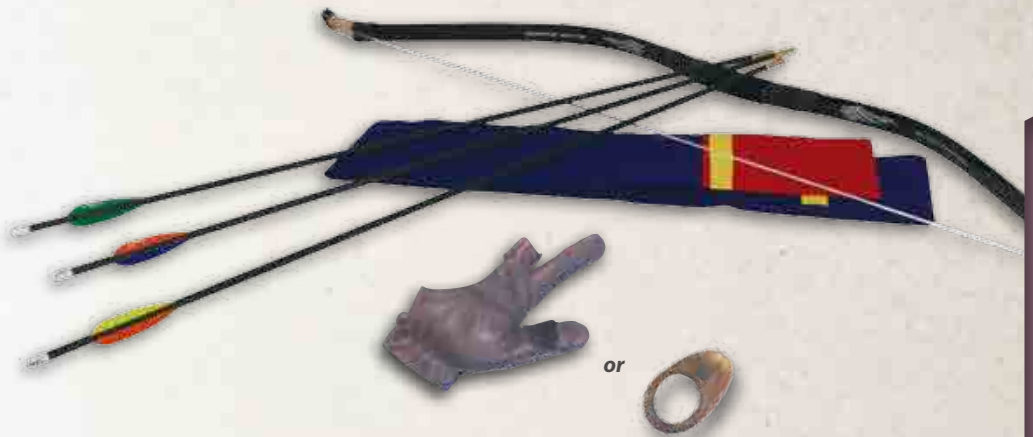
Glove



Thumb Ring



Bow Cover-belt



BOW SET



* Apply for all bows





Intangible Cultural Heritage

(Chungbuk Province, South Korea)
Name: Mr. YANG Tae-Hyun / Gungsijang
Company: Cheongju Juksi (Bamboo Arrow)
Official Manufacturer for War of Arrows

Natural Material

CHEONGJU BAMBOO ARROW

Gungsijang : Bow and Arrow making

Gungsijang refers to the making of bows and arrows. The arrows are usually made with green bamboo. Green bamboo raised in the western coastal area, where sea prevail, is strong on the outside but has a soft interior, lending itself well to production.



KTB BAMBOO ARROW



**Official Manufacturer
for War of Arrows**



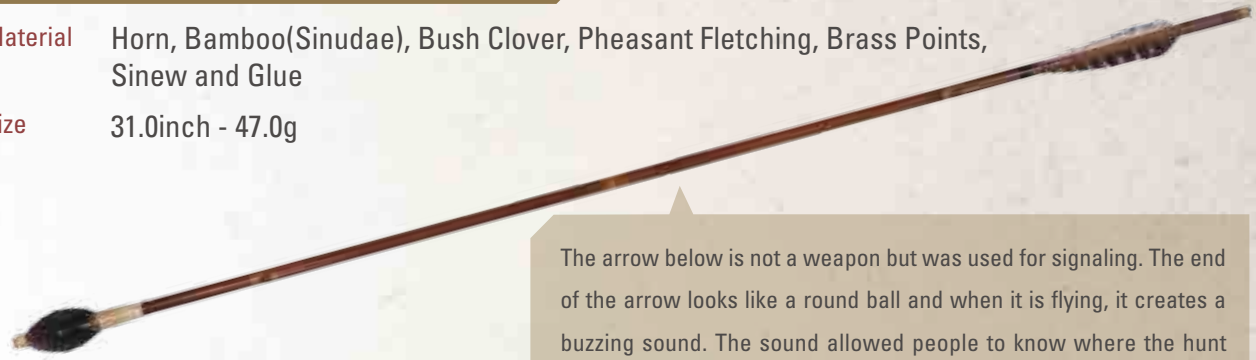
Bamboo Arrow

- Material** Bamboo(Sinudae), Bush Clover, Pheasant Fletching, Brass Points, Sinew and Glue
- Size**
 - #1 : 30.4inch - 20.6g
 - #2 : 31.0inch - 22.58g
 - #3 : 31.6inch - 24.4g
- Nock Color** Navy, Blue, Red, Green, Orange



Hyoshi / Whistling Arrow

- Material** Horn, Bamboo(Sinudae), Bush Clover, Pheasant Fletching, Brass Points, Sinew and Glue
- Size** 31.0inch - 47.0g

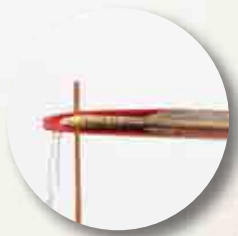


The arrow below is not a weapon but was used for signaling. The end of the arrow looks like a round ball and when it is flying, it creates a buzzing sound. The sound allowed people to know where the hunt was. The word '호시', beginning means 'crying arrow'.

the source of the text "kid.chosun.com / Fun&Easy Guide : Korea Wall Painting of the Goguryeo Tomb"

Tong-ah and Pyunjun

- Tong-ah Material** Bamboo, Oak wood
- Pyunjun Material** Bamboo(Sinudae), Bush Clover, Pheasant Fletching, Brass Points, Sinew and Glue



It is a shooting tube with cradle and is made of oak wood and bamboo. At the back, there is a ring attached so that you can fit your fingers into it. The lowest part of the cradle is decorated with bamboo and painted red and green with gold ornaments.

The 'Pyunjun' is a short arrow shooting into a basket 'Tong-ah'. The available range of this small arrow is far. It is not easy to keep away from it and it cannot be used for re-shooting. The production method and shooting method of this arrow was a secret all through the Chosun Dynasty era.



NOMAD KTB ARROW

Material Carbon Shaft, Brass Point, VaneTec vanes, In-Nock

- Size**
- #1 : 30.4inch - 20.6g
 - #2 : 31.6inch - 24.4g
 - #3 : 32.2inch - 28.1g
 - #4 : 33.4inch - 30.0g



NOBLESS FIBER ARROW

Material Fiber Shaft, Aluminium Point, vanes, In-Nock

- Size**
- #1 : 28.6inch - 32.5g
 - #2 : 32.8inch - 40.0g



WARNING

An arrow shaft can become damaged from impacts with hard objects or other arrows, or after being shot into a target. A damaged arrow could break upon release and injure you or a bystander.

A damaged arrow should never be fired. You must carefully inspect each arrow shaft, nock and other components before each shot to see that they have not been damaged. Before shooting, place the arrow between your thumb and fingers, and using your other hand to slowly rotate the shaft, run your fingertips along the entire arrow length, feeling and looking closely for nicks, cracks, splits, dents, or other marks that could indicate the shaft has been damaged. If your arrow is crested, inspect for impact damage on the crest surface. If damage is present, remove the crest and inspect the shaft underneath the crest. If shaft damage is present, do not shoot the arrow. Discard the shaft.



BOW ACCESSORIES

KTB BELT(Gungdae)

The KTB Belt(gungdae) is a dual-purpose accessory. When the bow is not in use, the KTB Belt(gungdae) is a bow bag and protects the bow. It is tied around the waist and is used like a quiver while shooting. Arrows are twisted into the KTB Belt(gungdae), points in and nocks out.



HOW TO TIE THE KTB BELT



1. Ready to tie
2. Tie the cover(belt) 1
3. Tie the cover(belt) 2
4. End of line fit
5. Put the arrows
6. Arrangement
7. Ready to use

KTB BELT | THUMB RING

BOW ACCESSORIES

THUMB RING

Authentic style made from real cow horn.
 This deluxe model has a raised ring for the string to lay on instead of against the flesh.
 Produces a better release and no thumb pain.
 Size : 15~24mm



Thumb Ring(General Style) | gakji
 When shooting arrow to easy use chin



Thumb Ring(Male Style) | sugakji
 It is more effective when using a strong elastic bow
 It make to size adjustment because leather pad



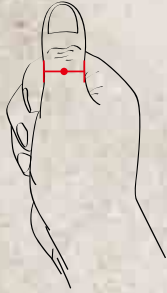
Plastic Thumb Ring
 material : plastic



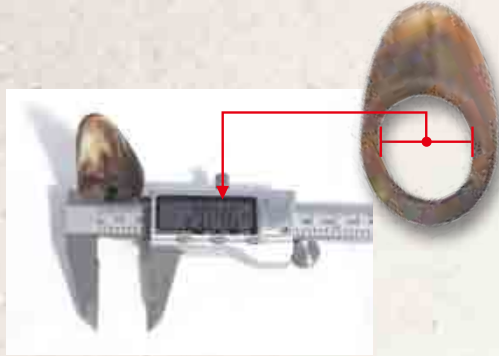
BOW ACCESSORIES

GENERAL STYLE THUMB RING | GAKJII
HOW TO USE THE THUMB RING

When shooting arrow to easy use chin



Measure the diameter of your thumb.



The diameter is size of thumb ring.



The thumb ring is elliptical



The thumb is put through the thumb ring from the rounded side at a 90° angle to the thumb.

The ring is positioned just in back of the knuckle of the thumb.

The ring is turned 90°, so that the ring protects the pad of the thumb.

The bow handle is held diagonally in the hand, with the fingers curling in back of the handle.



The string is positioned where the ring and thumb meet.

The index finger wraps around the thumb, similar to flipping a coin. The arrow rests just above the thumb and ring. The index finger will push the arrow into the bow, so the arrow will not fall off, even if the bow is canted upside down.

The bow is in position to be drawn and an initial sighting of the target is done.

The string is drawn straight back until the back of its point touches the bow arm's thumb, with the bow arm straight and the draw arm's elbow parallel to the ground.



To release, the draw hand is simply relaxed. The bow should be held still until after the arrow has cleared the bow.



TIP

There has no 100% exact thumb ring on your thumb. We like to recommend you smaller size than your thumb. It is available to modify follow to your size with sandpaper.

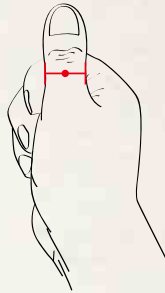


GENERAL STYLE THUMB RING

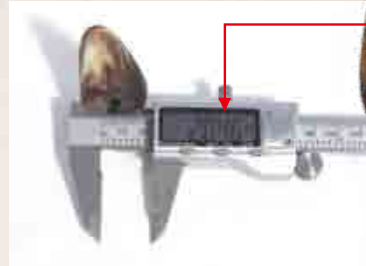
BOW ACCESSORIES

MALE STYLE THUMB RING | SUGAKJI HOW TO USE THE THUMB RING

It is more effective when using a strong elastic bow
It make easy to size adjustment because leather pad



Measure the diameter of your thumb.



The diameter is size of thumb ring.



The thumb ring is elliptical



The thumb is put through the thumb ring from the rounded side at a 90° angle to the thumb.



The ring is positioned just in back of the knuckle of the thumb.



The ring is turned 90°, so that the ring protects the pad of the thumb. Adjust the sizing used the leather pad.



The string is positioned where the ring and thumb meet.



The index finger wraps around the thumb, similar to flipping a coin. The arrow rests just above the thumb and ring. The index finger will push the arrow into the bow, so the arrow will not fall off, even if the bow is canted upside down.



The bow is in position to be drawn and an initial sighting of the target is done.



The string is drawn straight back until the back of its point touches the bow arm's thumb, with the bow arm straight and the draw arm's elbow parallel to the ground.



To release, the draw hand is simply relaxed. The bow should be held still until after the arrow has cleared the bow.

TIP

There has no 100% exact thumb ring on your thumb. We like to recommend you smaller size than your thumb. It is available to modify follow to your size with sandpaper.



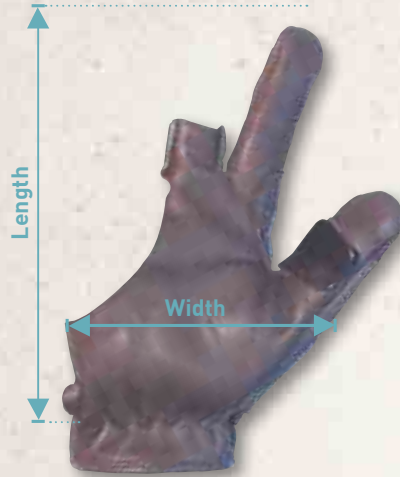
**BOW
ACCESSORIES**

KTB GLOVES

Equipment which protects the hand

KTB GLOVE

Material : Sheepskin
Type : RH/LH
Size : S, M, L, XL
Color : Brown



How to use the KTB Glove1



How to use the KTB Glove2

| Size | Width | Length |
|--------|--------------|--------------|
| Small | 105mm(4.13") | 185mm(7.28") |
| Medium | 110mm(4.33") | 188mm(7.40") |
| Large | 115mm(4.52") | 198mm(7.79") |
| XLarge | 120mm(4.72") | 200mm(7.87") |

KTB GLOVE



Zawra Draw Glove

Material : High quality leather
Type : RH/LH
Size : S, M, L, XL
Color : Black



Zawra 3-finger Glove

Material : High quality leather
Type : RH/LH
Size : S, M, L, XL
Color : Gray



Zawra Arrow Rest Glove

Material : High quality leather
Type : RH/LH
Size : S, M, L, XL

BOW ACCESSORIES

KTB STRING KTB ARM GUARD



AUTHENTIC KOREAN HORN BOW STRING

Material : Fast Flight
Size : 47"(112.5 cm)



KTB STRING

Material : Fast Flight
Size : 44"(112.5 cm)
48"(117.2 cm)
53"(124.0 cm)



SMG STRING

Material : Fast Flight
Size : 44"(105.5 cm)
47"(112.3 cm)
50"(119.8 cm)



TAEGEUK STRING

Material : Fast Flight
Size : 49"(116.5cm)



LEGEND STRING

Material : Dacron
Size : 50"(123cm)



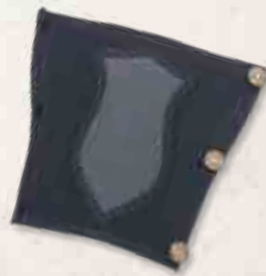
BRAVE STRING

Material : Dacron
Size : 28"(68.5cm)



Long Arm Guard

Size : 300 x105mm
Weight : 60g



Zawra Arm Guard

Size : 190 x190mm
Weight : 55.5g



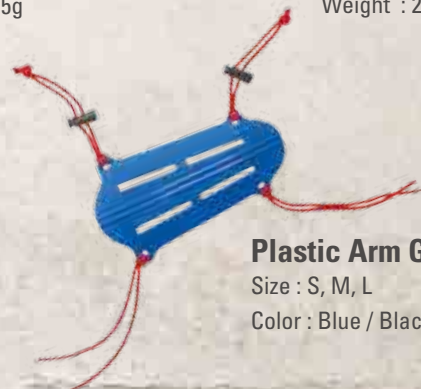
Zawra Kids Arm Guard

Size : 130 x140mm
Weight : 27.0g



Zawra Kids Arm Guard Velcro Type

Size : 105 x160mm
Weight : 14.0g



Plastic Arm Guard

Size : S, M, L
Color : Blue / Black

KTB STRING | KTB ARM GUARD



KTB QUIVER



Zawra Tube Side Quiver

Size : 110 x 520mm
Weight : 140.5g



Zawra Turkish Quiver

Size : 270 x 360mm
Weight : 175.0g



2 Tube Quiver

Size : 17"
Color : Black
Includes two arrow tubes and slide type of belt clip / 17" long Great for youth shooters



MARKSMAN BACK QUIVER

Our highest quality quiver made from super thick hand sewn leather. Super smooth finish black with animal hair detail and lots and lots of lacing. 22" long and 5" wide. A single shoulder strap is adjustable to fit just about any adult.



HIP QUIVER

Constructed of quality suede material, this compact hip quiver holds 12 arrows.
Length : 16 1/2"
Color : Brown
RH or LH



3 TUBE QUIVER

3 TUBE QUIVER is a stylish, feature-packed, quiver. Manufactured with heavy duty polyester material, it features 3 plastic tubes for arrow separation, several pouches, pockets, loops and two external pockets for keeping additional accessories.
Length: 18"
Color : Black, Blue, Red

KTB QUIVER



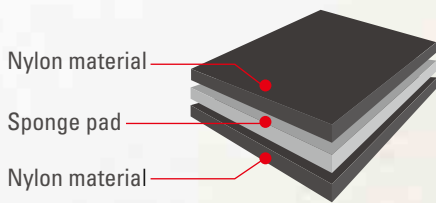
KTB BOW CASE

- Free Size for all kinds of KTB)
- Quality Cloth Material
- Double two way zipper
- Durable nylon material
- Two strap handle for easy transportation
- Exterior Accessory Pocket
- Black Color



KTB BOW CASE

KTB Padded Bow Case Structure



BOW ACCESSORIES

BOOKS

INTERNATIONAL TRADITIONAL BOWS AND ARROWS BOOK

You, Young-Ki, director of Young Jip Bow & Arrow Museum

International Traditional Bows and Arrows of Yesterday and Today by Yoo Young-Ki, director of Young Jip Bow & Arrow Museum.

It's thought that for people living in the Stone Age who created the instruments for living by breaking or grinding down the stones, bows and arrows were not only effective weapons in comparison with the swords or javelins with which they had to personally fight against the fierce animals with strong teeth or sharp claws, but also significant inventions by which they defended their tribal community from the invaders and conquered territory.



BOOKS



Korean Traditional Archery

Thomas A. Duvernay with Nicholas Y. Duvernay

Korean Traditional Archery is a work meant to fill a need for an introductory book on the subject in English. Although there have been several books written on the subject in Korean, none are available in English. This work is not intended to be the final word on the subject; conversely, it is meant to be the first word.

Archery Traditions of Asia

Stephen Selby (Author)

The bow and arrow are one of the oldest inventions of humankind. From their inception, bows and arrows were a global phenomenon. Unlike many other inventions, they were not something first invented by one region or people and then transmitted to others. Rather they emerged independently in different parts of the world and as a result, in terms of archery skills and craftsmanship, they embodied the distinctive local traits of the people among whom they originated.



BOW ACCESSORIES

Traditional Arrow Rest | Chuljeonpi | Dogoji | Finger Saver
 The national flag of Korea(Taegeukgi) | Jumpi

HOW TO USE THE TRADITIONAL ARROW REST

1.  Remove the Chuljeonpi
2.  Remove the Chuljeonpi
3.  Arrow Rest must be put on Left side for right handed
4.  Glue with 401 Loc-Tite
5.  Press a minute
6.  Shooting



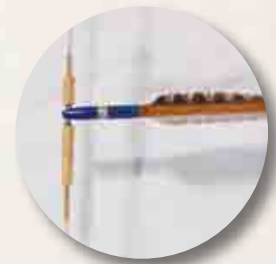
BOW ACCESSORIES



Chuljeonpi



Dogoji



Finger Saver



Taegeukgi(The national flag of Korea)

Material : Polyester Fabric Waterproof
 Size : 90 x 135 cm(35.43" x 53.14")



**Jumpi
 (KTB Grip Band)**

BOW ACCESSORIES

Draw Weight Scale(Digital Force Gauge) | Freddie Archery T-Shirt
Fabric Target Face | Nocking Point | Ground Quiver

Draw Weight Scale(Digital Force Gauge)

* Including Digital Scale



BOW ACCESSORIES



front

back

Freddie Archery T-Shirt

Material : Coolmax

Size : Size: M, L, XL, XXL



Fabric Target Face * Size can be made to order



Nocking Point

Nocking Point



Ground Quiver

Sturdy stand with 26" spike

Thank you ♡



www.freddiearchery.com

Enjoy your shooting!

FREDDIE
ARCHERY
www.freddiearchery.com

68-9, Jangan-gil, Pyeongtaek-si, Gyeonggi-do, 17738, Korea

Tel. +82-10-9448-5043

Fax. +82-31-667-5045

E-mail. ktb@koreanbow.com



<https://www.facebook.com/freddie.won.3>



YouTube

