



ENSURING THE FUTURE OF COMMUNITY HEALTH

2018 IMPACT REPORT

THE MISSION OF LA CLÍNICA DE LA RAZA IS TO IMPROVE THE QUALITY OF LIFE OF THE DIVERSE COMMUNITIES WE SERVE BY PROVIDING CULTURALLY APPROPRIATE, HIGH QUALITY, AND ACCESSIBLE HEALTH CARE FOR ALL.

BOARD OF DIRECTORS

Yvonne Hudson-Harmon,
President

Ramon Terrazas, MD, MPH,
Vice President

Christopher Ohman,
Secretary

Paul Marriott Swenson, MBA,
Treasurer

Norma Guadalupe Guerrero,
Parliamentarian

Jill Elizabeth Noonan, JD, RN,
Past President

Daniel Ayala

Sophia Bucheli

Elizabeth Diaz

Maria de Los Angeles Espinoza

Aisha Hampton-Bowser

Rachel Harralson

Robert Calvin Katter

Reverend Rodney J. Leggett

Maria Tsaklanos

BOARD OF DIRECTORS (LEFT)

Back row, left to right: Rev. Rodney J. Leggett, Ramón Terrazas, Yvonne Hudson-Harmon, Paul Marriott Swenson

Front row, left to right: Aisha Hampton-Bowser, Norma Guadalupe Guerrero, Maria de Los Angeles Espinoza, Sophia Bucheli

Not pictured: Jill Elizabeth Noonan, Daniel Ayala, Elizabeth Diaz, Rachel Harralson, Robert Calvin Katter, Christopher Ohman, Maria Tsaklanos



94%

PATIENT SATISFACTION

91K

NUMBER OF PATIENTS
SERVED IN 2018

1,200

LA CLÍNICA EMPLOYEES

35

SITES IN ALAMEDA, CONTRA COSTA,
AND SOLANO COUNTIES



RESPONDING TO THE HEALTH WORKFORCE SHORTAGE

Dear Friend of La Clínica,

Since the passage of the Affordable Care Act (ACA) in 2010, access to insurance coverage has improved dramatically in California. We are also encouraged by the major shift we see in how social determinants of health are influencing the redesign of health care systems. That's the good news.

However, with the increase in access, we are now facing an alarming shortage of health care professionals coupled with an imbalance in the geographic and racial distribution of these workers. Of particular importance is the underrepresentation of Latino and African American workers. While Latinos make up 40% of the total population of California, less than 7% of the physicians in the state are Latino.

Swelling demand and an aging workforce are only part of the problem. Primary care professionals, often the first point of contact and on the frontlines of healthcare, are facing burnout. The number of individuals ready to fill these vacancies continues to shrink. We need smart strategies to fill the pipeline of trainees in health occupations.

La Clínica has prioritized this issue and is making substantial investments to address the inequitable supply of health professionals in our region. We are implementing strategies to foster better training and retention to fill gaps in primary care. We continue to maintain strong relationships with residency programs that we have held for decades. We continue to support our workforce pipeline by cultivating youth in the health care profession. We continue to recruit and hire from our community. We are advocating for policy changes to move patients towards more primary care prevention services where we can have the most impact on quality of life. We have committed ourselves to changing the equity equation to generate greater opportunities and resources for our most disadvantaged populations. The movement for health equity is gaining momentum and we are honored to be part of it. But our work is not complete.

We still have many who are uninsured and inequities are placing a burden on both the patient and the system. Together, we can champion solutions for the dire shortage of health care professionals. The health of our communities depends on it.

¡Sí se puede!

A handwritten signature in black ink that reads "Jane García". The signature is fluid and cursive, with the first name "Jane" and the last name "García" clearly visible.

Jane García, La Clínica CEO

2018 HIGHLIGHTS

LA CLÍNICA DENTAL EXPANDS SPECIALIZED PEDIATRIC CARE

La Clínica's newly expanded Children's Dental Clinic opened in September 2018. For the past 16 years, La Clínica has specialized in serving pediatric patients with complex medical conditions or special health care needs through this clinic in partnership with UCSF Benioff Children's Hospital Oakland. The expanded space includes 13 dental chairs and state-of-the-art equipment. Since the expansion, the wait time to enroll new patients has decreased significantly from 6 months to 1 week. In addition, this site is only one of 2 children's dental clinics in Northern California that serves pediatric patients on Medi-Cal that need special care.



REESE BRANDISI PHOTOGRAPHY



REESE BRANDISI PHOTOGRAPHY

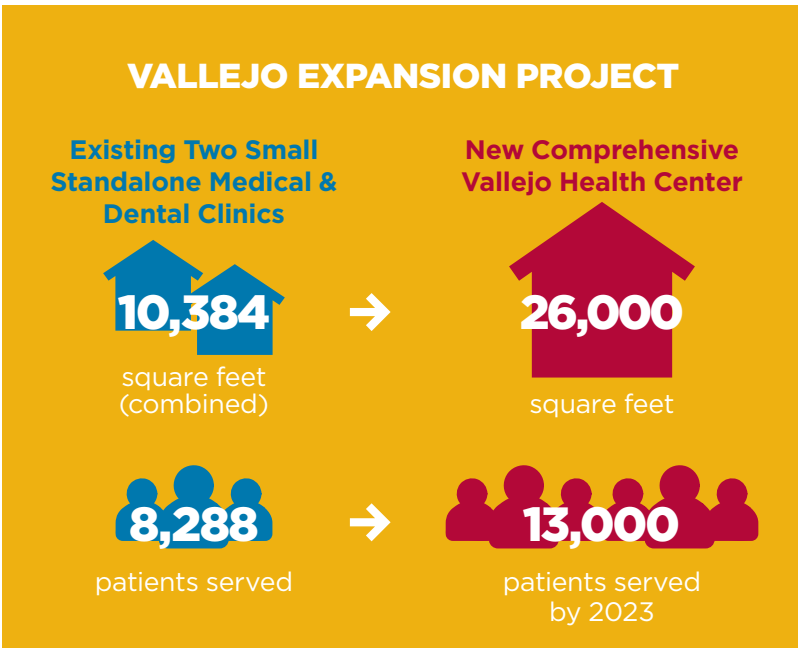
Left to right: Ken Grullon, Kaiser Permanente; Jane García, La Clínica CEO; Yvonne Hudson-Harmon, La Clínica Board President; Aisha Hampton-Bowser, Natixis Investment Managers; Logan Taylor, Union Bank

ALL THAT JAZZ (& SUSHI!) CELEBRATES 47TH ANNIVERSARY

La Clínica's 2018 annual gala celebrated our 47th anniversary of connecting communities to better health. As part of the evening, more than 300 of our guests came together at the lively Yoshi's Jazz Club & Japanese Restaurant in Oakland to celebrate and dance to the Latin jazz rhythms of legendary Pete Escovedo. Through the support and generous investments of our guests and sponsors, we were able to raise \$94,985 at the event alone and \$324,245 overall—the most to date! We would like to thank everyone who made the evening such a great success.

LA CLÍNICA VALLEJO EXPANSION BREAKS GROUND

Construction of La Clínica's 26,000 sq. ft. premier health center in Vallejo began in December, two blocks away from the current Vallejo Medical. Upon completion, the expanded site will serve an additional 6,000 people per year and offer them medical, dental, behavioral health, optical and health education services under one roof for greater efficiency and patient convenience. Not only will this project improve health and wellness of patients, it will contribute to the economic revitalization of the downtown community through increased foot traffic and additional customers. Construction of the project is slated to be completed in 2020.



Alumni Honoree Jane García (left) with Stacey Baba & James Vokac from the UC Berkeley School of Public Health Dean's Circle.

JANE GARCÍA RECOGNIZED AS ONE OF 75 MOST INFLUENTIAL ALUMNI

On April 21, La Clínica CEO Jane García was honored at the 75th Anniversary celebration of the UC Berkeley School of Public Health. She was recognized as one of the 75 most influential members of the alumni community for her significant contributions to the field of public health over the past 75 years. The weekend-long celebration took place at the new home of the School of Public Health on Berkeley Way West.

DENTAL

Recruiting, Training, and Hiring from the Community

Having a workforce that understands the community leads to better health outcomes for patients.

Through La Clínica's partnership with the NYU Langone Advanced Education in General Dentistry program, dental residents receive valuable training and experience at our sites providing equitable and affordable dental care for a variety of patients including in culturally diverse patient populations and patients with special needs.

This NYU Langone program, administered in California through UCSF, allows residents to hone the skills of postdoctoral dental practitioners by successfully completing a number of supervised procedures in general dentistry. Residents hosted at La Clínica often exceed their minimum requirements, not only because of the overwhelming community need, but also because of the opportunity to learn from dental specialists to perform specialty procedures. As a result, program participants extol the exposure they get to community dentistry and the experience often becomes a commitment to serving the community as a career choice. As a testament to the model's effectiveness, the last two residents who were trained through this program are now employed full-time by La Clínica: Dr. Tessa McGregor at the Monument Dental Clinic in Concord and Dr. Guadalupe Madrigal, page 7, at the Pittsburg Dental Clinic.





10%

of Trainees Agencywide Were Hired
to La Clínica's Workforce in 2018



As a kid I was in the dental chair all the time.

I had a lot of issues: cavities, problems with my teeth, infections, you name it. But it was those experiences, plus my interest in science and wanting to be of service to people, especially underserved populations, that brought me to La Clínica. I knew I was interested in health care so I decided to pursue dentistry. As part of my training at UOP dental school, I had the opportunity to spend time working at La Clínica on Fruitvale. It was an invaluable experience for me because it taught me so much more about working with people. I am convinced that the confidence I have today as a dental practitioner can be traced back to my community level work with La Clínica.

— **Guadalupe Madrigal, DDS**, former NYU Dental program resident and current La Clínica dentist

BEHAVIORAL HEALTH

Developing a Culturally Competent Workforce

Since 1973, La Clínica's commitment to ensuring the future of community health has meant training and recruiting future generations of culturally and linguistically competent behavioral health professionals. Our behavioral health services include prevention, integrated early intervention at our medical sites as part of primary care, and specialty mental health treatment for people with more severe conditions.

The worsening shortage of behavioral health professionals will continue to acutely affect underrepresented and low-income communities. Therefore, our workforce development efforts and partnerships have been expanded in recent years.

One of those partnerships is between Stanford's Department of Psychiatry and Behavioral Sciences and one of La Clínica's two specialty mental health clinics, Casa del Sol. This program trains psychiatry residents who are passionate about community mental health, equity, and social justice. Residents gain critical skills through a range of didactic sessions, comprehensive training, and supervision provided by a multidisciplinary team of clinicians, psychiatrists, and psychiatric nurse practitioners. Through this work in a community clinic environment, residents strengthen their capabilities to address the current and future needs of low income communities. La Clínica is proud to partner with Stanford to tackle the state's workforce shortage and to help balance the unequal distribution of mental health professionals. These strategies are a vital component of addressing California's workforce shortage and La Clínica continues to be at the forefront of these efforts.





When I was in college, I volunteered at a foster home where the children had been removed by Child Protective Services.

That experience changed my life and career trajectory. I had learned a little bit of Spanish in high school and wanted to learn more medical terminology in Spanish to help provide care to this patient population. In my fourth year at Stanford, I learned that working at La Clínica was an option for my elective clinic. It was an opportunity to practice medicine in a meaningful community setting I could not pass up. Working in a collaborative, interdisciplinary model that facilitates comprehensive care — something I haven't had much exposure to beyond here at La Clínica — has been extremely rewarding. I hope to continue working in community settings and to use what I have learned here to improve patient care in the public health system.

— **Grace Lee, MD**, Stanford Psychiatry program resident 2019



15,662
Number of Trainee Hours Provided at
La Clínica Agencywide in 2018

Left picture: Dr. Lee in supervision with Dr. Wendy Bernstein, Associate Medical Director at La Clínica Casa del Sol.

MEDICAL

Expanding and Sustaining Strong Partnerships

At La Clínica, we are committed to building partnerships with institutions to collaboratively address both the worsening health care workforce shortage and the increasing demand for the services we provide. One such partnership is with the Kaiser Permanente Vallejo Family Medicine Residency Program. La Clínica North Vallejo hosts Kaiser Permanente residents who complete rotations onsite and learn about community medicine by being exposed to a community clinic environment. This residency program equips participants with the cultural competency required to provide care to an increasingly diverse patient population and to patients with complex medical and social needs.

La Clínica proudly serves on the front lines of health care for the uninsured and underserved to deliver medical care to the people in our communities and to create a pipeline for future community-based health care professionals. Together with Kaiser Permanente, we are meeting our joint social mission of providing access to affordable, high quality health care services for our most vulnerable populations.





Ever since I was a little girl, I knew I wanted to be a doctor.

My mom raised three daughters with a passion for science and strong values for giving back to the community. That's why I took a different route than most med students and majored in public health at UC Berkeley. The coursework in community health and social sciences shifted my perspective as I began to see my work through an equity lens. I began to see my patients in a larger context of community, society and economic disparities. That's why the La Clínica residency program has been such a great fit for me. I believe that fulfillment comes through the ability to connect your passion with your work and my work at La Clínica connects these dots together in the most meaningful way I could have imagined.

— **Emily Fisher, MD, MPH**, former KP Vallejo program resident and current fellow



207

Number of People
Agencywide Trained at
La Clínica in 2018



COMMUNITY HEALTH

Cultivating the Next Generation of Health Care Leaders

At La Clínica de La Raza, we are always thinking strategically about how to grow and sustain our workforce development efforts. Since 2015, La Clínica has partnered with Bay Area Youth Agency Consortium to place AmeriCorps members at La Clínica's eight School-Based Health Centers.

La Clínica's AmeriCorps program serves as a workforce development pipeline, preparing members for careers in health care, public health, and social services. Members receive extensive clinical and community health education training that enables them to provide individual health coaching with patients. They also lead peer health training programs to build the next generation of youth leaders as Peer Health Educators.

These Peer Health Educators engage other youth on a range of community-selected topics. This model serves as an entry point to opportunities in health care and social justice by exposing young people to the wide array of career possibilities. It also empowers young people to directly address and respond to the diverse needs of their communities, which is at the heart of La Clínica's approach to foster future health care leaders with the right competencies and capabilities to deliver better care.

Diana Perez, former La Clínica AmeriCorps member (2 years) and current La Clínica School-Based Health Educator, with Ahmed Hajaji, Peer Health Educator (3 years), at our Tiger Clinic at Fremont High in Oakland.



\$516,846

Amount in Service Value Contributed
Back to the Community in 2018
Agencywide



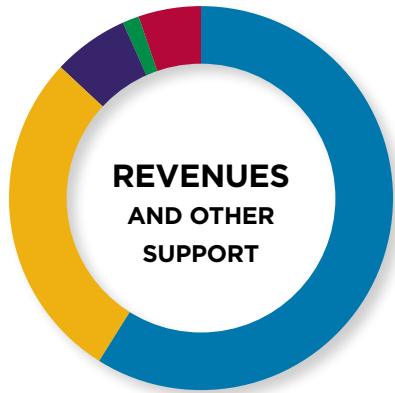
I became a Peer Health Educator in my sophomore year of high school.

I'm now a senior at Oakland Tech and the experience has really helped me grow and become a better community advocate. Through this opportunity, I've been able to elevate the voices of my peers and address challenges and issues impacting them. Not only this, but our diverse backgrounds makes us stronger and gives us the confidence that we can make lasting positive change. Overall, I've gained valuable skills and feel prepared to take on any obstacle to uplift my community.

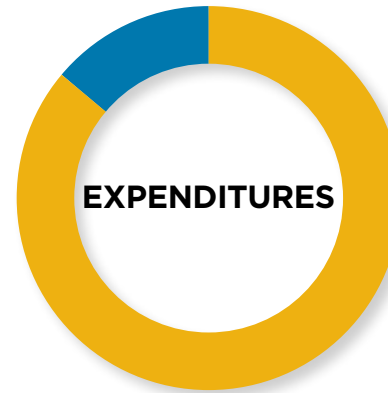
— **Sela Roach**, La Clínica School-Based TechniClinic Peer Health Educator 2016–2019

LA CLÍNICA AT A GLANCE

Fiscal year July 1, 2017 – June 30, 2018



■ Net Patient Service Revenue	\$63,010,051
■ Grants and contributions	\$29,839,219
■ Capitation Revenue	\$6,770,243
■ Contributions In-Kind	\$1,549,161
■ Other income	\$5,517,017
TOTAL REVENUES	\$106,685,691



■ Program Services	\$89,908,954
■ Support Services	\$14,227,395
TOTAL EXPENDITURES	\$104,136,349
EXCESS OF REVENUES OVER EXPENDITURES	\$2,549,342
CAPITAL GRANTS AND CONTRIBUTIONS	\$9,088,540
OTHER CHANGES	(\$385,308)
CHANGE IN NET ASSETS	\$11,252,574

Patient Profile

Calendar Year 2018

PATIENTS SERVED	PATIENTS*	VISITS
Medical	66,475	223,456
Dental	29,085	80,760
Vision	10,105	14,110
Mental Health	6,580	19,244
Health Education/ Preventive Medicine	5,791	11,604
Total Number of Patients and Visits	90,725	349,174

*Many patients access multiple services



PERCENT OF PATIENTS BY RACE

■ Asian	8%
■ Native Hawaiian	<1%
■ Pacific Islander	1%
■ Black/ African American	10%
■ American Indian/ Alaska Native	1%
■ White	67%
■ More than one race	5%
■ Unreported	8%



PERCENT OF PATIENTS BY ETHNICITY

■ Hispanic/Latino (of all races)	66%
■ Not Hispanic/Latino	32%
■ Unreported	2%



PERCENT OF PATIENTS BY AGE

■ 0–17	42%
■ 18–24	9%
■ 25–64	42%
■ 65+	7%



PERCENT OF PATIENTS BY PAYOR SOURCE

■ Uninsured	22%
■ Medi-Cal	65%
■ Medicare	4%
■ Contra Costa CARES	4%
■ Private Insurance	5%



PERCENT OF PATIENTS BY GENDER

■ Male	42%
■ Female	58%

YOUR GIFT MATTERS

You make a huge impact every time you give to La Clínica. Thank you for coming along with us on this journey and for your commitment to our work. Together, we can create thriving communities and ensure the future of community health for generations to come.

THE EAGLE SOCIETY DONOR CLUB

VISIONARY/VISIONARIO

(\$10,000 & ABOVE)

Anonymous (2)
Delta Dental
Helping Us Help Ourselves Foundation
JoAnn Intili & Ed Kissam
John Muir Health
Juliana & Joe Satterley
Kaiser Permanente
Natixis Investment Managers
Paul** & Andrea Swenson
Rachel Rendel
Suhr Risk Services of California
The California Wellness Foundation
The San Francisco Foundation
Union Bank Foundation

STAR/ESTRELLA

(\$5,000-\$9,999)

Anonymous (1)
Alameda Alliance For Health
Bank of America Charitable Gift Fund
Blue Shield of California
California Health Care Foundation
Daniel Ayala**
Dobbs Family Charitable Foundation
Henry Schein Dental
Magellan Cares Foundation
Marsh & McLennan Insurance Agency LLC

McKesson Foundation, Inc.
National Cooperative Bank
Dr. Sara Johnson* & Fred Kerrest
The California Endowment
Visa
Winifred & Harry B. Allen Foundation

LEADER/LIDER

(\$2,500-\$4,999)

Anonymous (1)
Alameda Health Consortium & The Community Health Center Network
Barbara Raboy & Ellie Hoffman
Bonnie Payne & Roger Tobin
Bruce G. Bodaken
Cally Martin
Carlos Quiroz
David Houser
East Bay Asian Local Development Corporation (EBALDC)
FivePoint
Goldman Sachs Gives
Ireland Bowens
Joseph Chouinard & Carmen Leon
Dr. Joseph & Jane Selby
Jou & Mabel Tchao
Julie McAfee
Karen Robinson
Kathleen Hogue Gonzalez
Dr. Kenneth Greene
Dr. Kenneth & Jeanifer Grullon

KaVo Kerr Group
Michael Tully-Cintron
Quest Diagnostics
San Benito Health Foundation
Sloan, Sakai, Yeung, & Wong LLP
Stevan & Catalina Alvarado
Susan* & Richard Moore
Wells Fargo

PARTNER/SOCIO

(\$1,000-\$2,499)

Anonymous (3)
ACE Home Health & Hospice
AIDS Community Research Initiative of America
AmeriPride Uniform Services
Dr. Andrew & Mary Moyce
Ann & Michael Parker
Anna Fisher & Jerry Wolfe
Carmen J. Moore Charitable Trust
Center For Elders' Independence
Chris Ohman**
Craigslist Charitable Fund
Curtis Overway
Dental Health Products Inc.
Douglas & Maria Bayer Foundation
Frank Burkatsky
Gail & Gerry Eiselman
George Marootian
INDE Architecture
Jane García* & Family
Jeff Sloan

Joellen Ademski & Gary Lambert
Karen Wandvik
Kathryn Wekselman
Linda Mason
Logan & Robyn Taylor
Marc Ramsey
Drs. Margaret Payne* & Dean Sheppard
Mario Castañeda
Mary & Stan Friedman
Mitch Gage
Moss Adams LLP
Norcal CFC Contributors
Patricia McMahon
Patrick & Naoko Cashman
Patti Taggart*
Peter Manoleas*
Dr. Ramon** & Lisa Terrazas
Ray Morgan Company
Rebecca, Jeffery & Vincent Hartman-Baker
Robert** & Laura Katter
Savely Healthcare Architects
Sharon Jenkins
Dr. Stephen Read
Tara Rosenzweig
The Unity Council
Zenaida Aguilera*

FRIEND/AMIGO

\$500-\$999

Anonymous (5)
Aaron & Jessica TaylorMays
Aaron Metals
Aisha Hampton-Bowser**

Akin Berry
Alameda County Supervisor Keith & Maria Carson
Alec Sadewhite
Drs. Alex & Mercedes Arroliga
Anthony & Angie Bilich
Dr. Art & Rebecca D'Harlingue
Benjamin Saylor
Burt Liss Charitable Fund of The Jewish Community Foundation of the East Bay
Californians Allied for Patient Protection
Carl Banks
Carlie Donovan
Colin Lacon
Community Clinic Consortium
David Alvarez
Diane & David Goldsmith
Dianna Deeley
Federico & Aggie Chavez
Genentech
George Arroyo
Herb & Rory Aarons
Ison Design
James Albritton
Jeanette Dong
Dr. John Murphy* & Caron Lee
Mr. & Mrs. John Yamamoto, D.D.S.
Joseph Earley
Dr. Julian & Dorothy Davis
Keith Bouma-Gregson

Ketty Bacigalupi
Kim Sloan*
Kumar Dandapani
Leah Bowser
Lisa Bereny
Drs. Louis Weckstein and Karin Denevi
Maria Sutter
Melissa Nelken & Ronald D. Lee
Michael Hochster & Maria Lani Malicdem
Michael Schroeder
Michele & Hal Whalen
Microsoft
Mima Baird
Dr. Monica Rosenthal
Peter Meyer
Phuc & My-Lien Nguyen
Principal Financial Group
Ralph Wolff
Richard Davis
Rick & Veronica Maida
Rosemary Healy
Dr. Scott* & Christina* Loeliger
Shirley & Charles Steinback-Hawthorne
Stacie & Nick Paoletti
Dr. Susan Sykes*
The Connealy/ Wood Trust
Trinh Vinh Tang
UTAP Printing
Walgreens Fruitvale
Yvonne Hudson-Harmon** & Paul Harmon

\$250-\$499

Anonymous (8)
 Dr. Alina Salganicoff
 Anahat Kaur Sandhu
 Andrés Schafhauser
 Andrew & Yesenia Smith
 Andrew Sniderman
 Ann & Conn Hallinan
 Ann & Tom Yamada
 Arthur Bakal
 Bob Roden & Sherry Novick
 Brian & Aida Howell
 Capital City Pharmacy
 Mr & Mrs Daniel Orr
 Darla & Todd Martin
 David & Anne Lamb
 David & Sheila Cavanaugh
 Deborah Napierski
 Diana Verhalen
 Drake & Marilyn Grega
 Edgar Quiroz
 Edgardo Esparza*
 Edward Atkinson Jr. & Jolane A. Findley
 Elisabeth Hallman
 Erin Bird
 Gerry Kosko
 Glenna Carraway-Idowu
 Grzegorz Kossakowski
 Dr. Hali Sherman
 Henry Harmon
 Hua Yen Temple
 Isela Kloepfel
 Dr. James McLean & Mario Valencia
 Jane Kaplan & Donatello Bonato
 Jasper Roel
 Jean Earley
 Jeff Hobson & Kim Seashore
 Jennifer Horne
 Jerry Fine
 Jill Noonan**

Joe Feldman & Nikole Richardson
 John & Mary A. Gunderson
 JP Morgan & Chase
 Julie Gibbard
 Kate Kasberger*
 Kathleen McNamara & Nathan Brennan
 Kenneth Cooke
 Kinman Tong & Patrick Laney
 Laura Gutierrez
 Lauren Soucy
 LifeLong Medical Care
 Linda Pierce
 Lisa Ingrassia
 Mr. & Mrs. Lucheng Liu
 Margaret J. & John M. Mooney
 Margaret Renik
 Mark Hipperson
 Marilyn & Cliff Wexler
 Marilyn Craig
 Mark & Lucia Savage
 Marsha Rees
 Mathew Brown
 Michael Fleischner
 Moises Garcia-Lemus*
 Molly & Josh Bergstrom
 Overaa Construction
 Richard Tuckwiler
 Richard Walker
 Rose Garcia-Bremond
 Salesforce Foundation
 Scion Staffing
 Sean Carmickle
 Shannon Hale
 Sheila Brown & Farley Neuman
 Sheila Gilson
 Sonya Luisoni
 Stephanie Santos
 Steve Dunn
 Valdery & Raymond Robinson
 Van Real

Victor & Sofia McKnight
 Virginia Yang & Walt French
 William Huff

\$100-\$249

Anonymous (14)
 ACT Memorial Charitable Fund
 Alvaro Fuentes
 Amy Payne
 Ana Ulloa
 Andrew Kovacevic
 Angie Hochhalter
 Anita Addison*
 Antonio Torres
 Congresswoman Barbara Lee
 Benjamin Canning-Pereira
 Benjamin Kerelian
 Beverly Olsen
 Bradley Cleveland
 Carmen Foster*
 Carolyn Leon
 Catherine Coates
 Chris Frey
 Christina Kyskan
 Claudia & Leb Case
 Clorox Company Foundation
 Cristina Tapia
 Dan Price
 Dana Hughes
 Dania Torres Wong
 Daniel Gallegos
 Daphne Du
 Dr. Daryl Dichek
 Denise Veronello
 Dennis Costanza
 Diane Winkler
 Dong Suh
 East Bay MUD
 Edmund James
 Edwin D. Fong
 Elena Hollander
 Eric Perez
 Erin Pederson*

Evelyn & Matthew Mullins
 Fabiola Hernandez-Soto
 Familia Dueñas-Lara
 Fernando Cortez* & Edith Juarez & Family
 Francisco I. Chavez*
 Gaber A. Saleh
 Gail Grigsby
 Gary Hubbard
 George & Maria Fulmore
 Glen & Heidi Couchman
 Golde Dudell
 Google
 Gretchen Scholtz
 Gretchen Thompson
 Guadalupe Dannels
 Hazel Sofrin
 Ian* and Dr. Christina Chavez Johnson*
 Isabel Dayrit*
 Jamie Elmasu
 Janice Eileen Henry
 Javier Alvarado*
 Jeanette Browne
 Jeremy Baptiste
 Joanne Laus
 John Chiang
 Dr. John Martin
 John Pham
 Joseph Stanford
 Judith Burle
 Judith Kellman
 Judy Payne
 Justine Frances
 Kathleen Brennan
 Kathleen Purcell
 Kathryn Wekselman
 Kathy Carter
 Mr. & Mrs. Hazel Sofrin
 Kelley Jensen
 Kristina Combs-Donofrio
 Laurie M. Luecker
 Lisa Lemus
 Lorenzo Garcia

Lorraine Bosche
 Lucy Skatzes
 Luisa Buada
 Lynne Rosen
 Madeleine Scott
 Dr. Marco & Cynthia Frias Baisch
 Margo George & Catherine Karrass
 Marie Kahn
 Marina Iida
 Marjorie W. Goldman
 Mark & Anne Ivie
 Martha Siegel
 Marty Lynch
 Mary Pittman & David Lindeman
 Michael Earley
 Michael McCubbin
 Michele Modena & Kelly Hayden
 Moises Cruz-Jauregui*
 Monica Padmos
 Nancy Falls
 Nancy Philips
 Nancy Shemick & Thomas Charron, M.D.
 Nick Koier
 Norma Solarz
 Ola P. Walton
 Pamela Jue
 Pat Currie
 Patrick Hughes
 Patrick Lee
 Paul Stahoviak
 Penny & Mark Cermak
 Peter Klos
 Raman Khanna
 Rand & Susan Chritton
 Rebecca & Robert Tracy
 Reverend Rodney Leggett**
 Rick Thng
 Robert Baird
 Robert Finklestein
 Robert Klipstein

Ronald Perez
 Rudd & Nancy Stevens
 Sandra Gilmore
 Sarah Parrish*
 Dr. Scott Taylor*
 Sean & Ari Kane
 Serena & Parker Stone
 Shelly* & Jim Federwisch - Cortez
 Stephanie Federwisch
 Steven Gratul
 Supervisor Wilma Chan
 Susan & Steven Kirschner
 Tammy Gaylord
 Teresa Gerringer
 Teresita Churchill*
 Thomas Ackerman
 Dr. Thomas Eusterbrock
 Dr. Tim Bittender
 Tom & Jane Reinsel
 Vanessa Vergara
 Veronica Duran
 Victor De La Pena
 Wilfredo Vasquez
 William Deiss
 William McClellan

* La Clínica staff

** Board of Director

We have recognized gifts made in 2018.

We hope we have acknowledged your gift accurately. Please contact our Fund Administrator, Vanessa Tan at vtan@laclinica.org or 510-535-2912 to notify us of any unintended errors or omissions.

IN-KIND DONORS

Accountemps
Adventure Cat Sailing Charters
Albany Bowl
Asamara Restaurant
Asian Art Museum
Aunt Mary's Cafe
Barbara Raboy
Barcote Ethiopian Restaurant
Bay Area Sports Trading Cards
Beach Blanket Babylon
Bennett Valley Golf Shop, Inc.
Berkeley Symphony
Blue and Gold Fleet
Blue Plate
BMW Concord
Boeger Winery
Brazelton
Burma Superstar
Cafe Colucci
California Shakespeare Theater
Campo di Bocce
Captain Kirk's San Francisco Sailing, LLC
Castello di Amorosa
Columbia Cosmetics
Demo Sport
DeYoung & Legion of Honor
Dr. Ariane Terlet* & Gary Navo
Family Forever Photography
Galeto Brazilian Steakhouse
Golden State Warriors
Green Music Center
Hagafen Cellars
Heller Jewelers
Herbs & Spices Catering
International Orange Spa
Judd's Hill Winery
Kaur House of Portraits
Laird Family Estate
Lalime's
Las Positas Golf Course
Lava Cap Winery
Lawrence Hall of Science, UC Berkeley
Livermore Valley Performing Arts Center
Marin Theatre Company
Markham Vineyards
Mount Saint Helena Golf Course
National Liberty Ship Memorial — S.S. Jeremiah O'Brien
Niles Canyon Railway
Oakland Ice Center
Oakland Zoo
O'Brien Estate
Pacific Pinball Museum
Plank
Platypus Tours Limited
Rachel Dunn Chocolates
Ratto's
Remedy Barre and Foam Rolling
San Francisco Air Tours
San Francisco Ballet
Sky High Sports
Smuin Ballet
Square One Yoga
Paul Stahoviak
Sunflower Caffe
Takara Sake USA, Inc.
Westlake Gynecology
Yoshi's Restaurant & Jazz Club
Yvonne** & Paul Hudson-Harmon
Zuni Cafe

TRIBUTE GIFTS — DURING 2018, GIFTS WERE MADE IN HONOR OF:

Shelly Federwisch and Jim Cortez Wedding
by Andrés Schafhauser, Andrew Biederman, Benjamin Canning-Pereira, Brenda McNabb, Brian and Aida Howell, Calnen Swingen, Elena & Greg Hollander, Elisabeth Hallman, Eric Perez, Fabiola Hernandez-Soto, Jaime Campos, Jasper Roel, Jean Earley, Jeanette Browne, Jerry Fine, Joanne Laus, Joseph Earley, Joy Serquina, Kathy Carter, Kita Seiger, Lisa Ingrassia, Maka Clifford, Malka Stover-Kemp, Marilyn and Cliff Wexler, Marina Iida, Mark and Anne Ivie, Mary Fitzgerald, Michael Earley, Michael Fleischner, Natalia Hellems, Nick Koier, Prescilla Gines, Robert Lee, Rudd and Nancy Stevens, Russell Preston, Sandra Gilmore, Sarah and Vero Shane-Vasquez, Stephanie Federwisch, Susan White, Terry and Eileen McMahon, Timothy Ingrassia, Tom and Jane Reinsel

Drs. Peggy Payne & Dean Sheppard, Bonnie Payne & Roger Tobin
by Amy Payne
Dr. Peggy Payne Sheppard
by Ann and Micheal Parker
Drs. Peggy Payne & Dean Sheppard
by Bonnie Payne
Amy Prevedel and Stewart Slafter
by Franklin and Norma Prevedel
Eve Fine
by Hazel Sofrin
Dr. Kim Reynoso
by James Albritton
Bonnie Payne
by Judy Payne
Dr. Peggy Payne
by Judy Payne
Dr. Ann Finkelstein
by Kathryn Wekselman

Jane García and Anita Addison
by Dr. Kenneth Greene
Dr. Jennifer Brodsky
by Kumar Dandapani
Dr. Meg Renik
by Mary & Stan Friedman
Dr. Isabel Lee
by Melissa Nelken & Ronald Lee
Dr. Erin Gutierrez, MD
by Robin & Greg Finnegan
Dr. John Pescetti
by Thomas Eusterbrock
Anita Addison
by Dara Schur
Bonnie Payne, Roger Tobin, Amy Payne & Judith Payne
by Drs. Margaret Payne* and Dean Sheppard

MEMORIAL GIFTS — DURING 2018, GIFTS WERE MADE IN MEMORY OF:

La Clínica patient Maria T. Arroliga
by Alex and Mercedes Arroliga, Ronald Holder, Michael and Tresa McNeal, Penny and Mark Cermak, Glen and Heidi Couchman, Erin Bird, Angie Hochhalter, Chuck Virnau, Tim Bittender, Pat Currie

Charles L. Henry Jr.
by Janice Henry
Cresencio & Francesca Go, Martin Arago
by Reynaldo Go
Dora Bacigalupi
by Denise Veronello
Linnea Castaneda
by Mario Castaneda

Lulu Falls
by Nancy Falls
Michelle Kellman
by Judith Kellman
Shirley & Philip Schild
by Daryl Dichek
Francisca Alvarez & Dora Bacigalupi
by David Alvarez



INVESTMENT IN OUR COMMUNITY

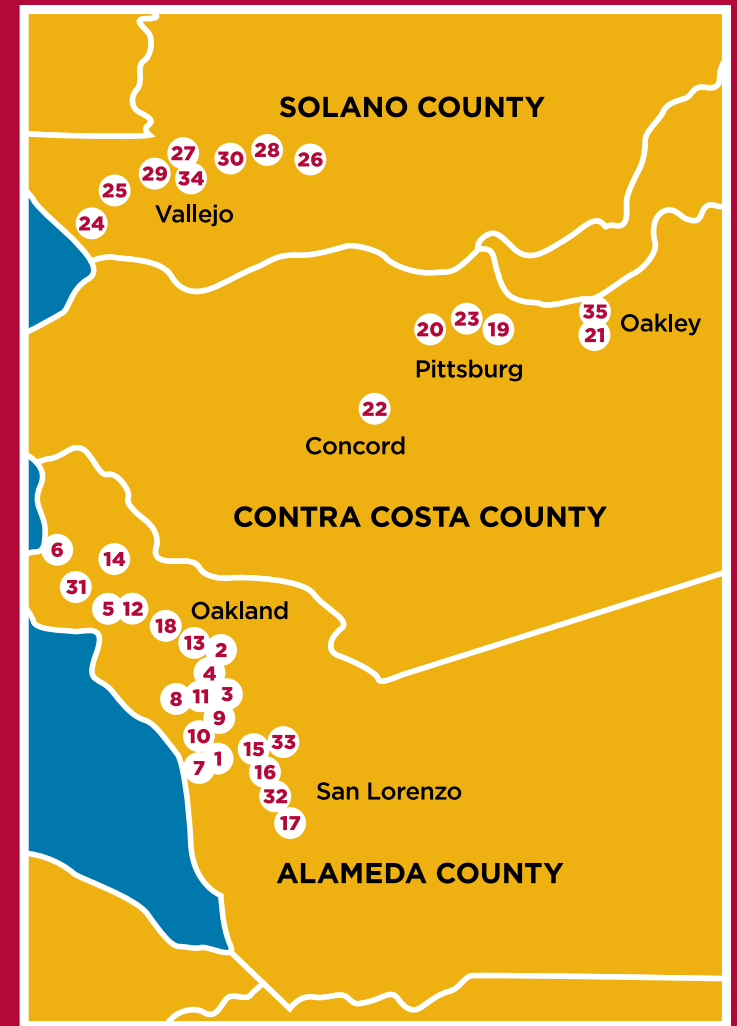
We are grateful for the generous support received from the government, foundations, and corporate community for funding important La Clínica de La Raza programs and services in 2018.

- | | | | |
|--|---|---|--|
| Alameda Alliance for Health | Connecticut Children's Medical Center | Kaiser Foundation Hospitals, Diablo Area | The Regents of the University of California, Berkeley |
| Alameda County ALL IN | Contra Costa Health Services-Behavioral Health Division/Mental Health | Kaiser Foundation Hospitals, Napa/Solano | The San Francisco Foundation |
| Alameda County Behavioral Health Care Services | Delta Dental Community Care Foundation | Los Medanos Community Healthcare District | Tides Foundation/Center for Care Innovations |
| Alameda County Health Care Services Agency | East Bay Community Foundation on behalf of Kaiser Foundation Hospital Fund | March of Dimes | TJ Long Foundation |
| Alameda County Public Health Department | Eden Township Healthcare District | Mylan Settlement Funds | Transnational Institute for Grassroots Research and Action (TIGRA) |
| Alameda County Public Health Department - HIV Health Services Administration | Essential Access Health Fund for Shared Insight/Rockefeller Philanthropy Advisors | New Venture Fund | Tri-City Health Center |
| Alameda County Social Services Agency | Health and Human Resources Education Center | City of Oakland, Oakland Fund for Children and Youth (OFCY) | UCSF Benioff Children's Hospital Oakland |
| Alameda Health Consortium | HEDCO Foundation | Oakland Unified School District (OUSD) | UCSF Benioff Children's Hospital Oakland (Family Care Network) |
| Blue Shield of California Foundation | John Muir Health | Office of Statewide Health Planning and Development (OSHPD) | UnidosUS |
| California Colorectal Cancer Coalition | John Muir Health Community Health Improvement | OneSight | University of California Office of the President |
| California Department of Public Health | John Muir/Mt Diablo Community Health Fund | Partnership HealthPlan of California | University of the Pacific |
| California Department of Public Health (CDPH), Department of Health Equity | Joseph and Vera Long Foundation | Public Health Institute | US Department of Health and Human Services, Health Resources and Services Administration |
| California Department of Public Health Office of AIDS | Kaiser Foundation Hospitals, Northern California Community Benefit Programs | Robert Wood Johnson Foundation and Urban Institute | US Department of Health and Human Services, Substance Abuse and Mental Health Services Agency (SAMHSA) |
| California School-Base Health Alliance | Kaiser Foundation Hospitals, East Bay Area | Senior Assistance Foundation Eastbay (SAFE) | Vesper Society |
| Center for Care Innovations | Kaiser Foundation Hospitals, Greater Southern Alameda Area | Solano Community Foundation | Wells Fargo |
| Center for Youth Wellness | | Stanford University | Webb Family Foundation |
| City of San Leandro | | Sunlight Giving | Werner-Kohnstamm Family Fund |
| Community Clinic Consortium | | Sutter Health | William G Irwin Charity Foundation |
| Community Health Center Network (CHCN) | | Sutter Health East Bay Region | |
| | | Sutter Health Sacramento Sierra Region | |

MEETING OUR PATIENTS WHERE THEY ARE: OUR LOCATIONS

1. La Clínica de La Raza (Fruitvale Village)
2. La Clínica de La Raza Fruitvale Dental
3. Community Health Education (Adult)
4. Community Health Education (Youth)
5. La Clínica de La Raza — WIC Program
6. La Clínica Dental at Children’s Hospital Oakland
7. Family Optical
8. Casa del Sol
9. Casa del Sol II*
10. Casa del Sol III
11. Clínica Alta Vista
12. San Antonio Neighborhood Health Center
13. Hawthorne Elementary School-Based Health Center
14. Oakland Technical High School-Based Health Center (TechniClinic)
15. Fremont High School-Based Health Center (Tiger Health Clinic)
16. Havenscourt Health Center
17. San Lorenzo High School-Based Health Center
18. Roosevelt Middle School-Based Health Center
19. La Clínica Pittsburg Medical
20. La Clínica Pittsburg Dental
21. La Clínica Oakley
22. La Clínica Monument
23. Dental Care Mobile, a Contra Costa Collaborative
24. La Clínica Vallejo
25. La Clínica Vallejo Dental
26. La Clínica Vallejo Great Beginnings
27. La Clínica Vallejo Great Beginnings Support Services
28. La Clínica North Vallejo
29. La Clínica North Vallejo Administrative and Support Services*
30. La Clínica North Vallejo/Great Beginnings Administrative and Support Services*
31. Youth Heart Health Center
32. Fuente Wellness Center
33. La Clínica Julian R. Davis Pediatrics
34. La Clínica Dental at Elsa Widenmann Health Center
35. Casa de Luz

* no direct health services/administration only



Service site markers are approximations of facility locations. Some markers were moved to make them more visible.

OUR SERVICES INCLUDE:

Adolescent Services
Behavioral Health
Case Management
Dental

Health and Nutrition Education
Laboratory
Medical

Pediatric Services
Pharmacy
Prenatal and Postnatal Care

Preventive Medicine
Radiology
Referral Services

Vision and Eye Care
Women’s Health
WIC





**BECAUSE WHEN
YOU INVEST
IN HEALTH,
YOU ENSURE THE
FUTURE OF OUR
COMMUNITIES.**

La Clínica de La Raza, Inc.

P.O. Box 22210, Oakland, CA 94623-2210

Tel: 510-535-4000 | Fax: 510-535-4189

 LaClinicaDeLaRaza  @La_Clinica_

Administration Offices:

1450 Fruitvale Ave, 3rd Floor, Oakland, CA 94601

www.laclinica.org

To learn the various ways you can invest in La Clínica,
please contact Fund Administrator, Vanessa Tan:
510-535-2912 or vtan@laclinica.org