

King Louie
america
UNION MADE IN USA

2018



USA UNION-MADE APPAREL

ALL KING LOUIE PRODUCTS ARE PROUDLY UNION MADE IN USA

King Louie *america*

Of the 30 components of the Dow Jones Industrial Average in 1938, 17 no longer exist. Thanks to you, our loyal customers, King Louie America (Union Made in the USA), is still here and going strong!

We are looking forward to an even a better year in 2018.

Sincere thanks,



Michael Lerner

PRODUCT LOCATOR

04	SHIRTS	
18	ACTIVEWEAR	
22	OUTERWEAR	

A complete product index by style name and number is listed on the inside back cover.



Visit our website at: www.kinglouie.com

New

FOR 2018



New

MOISTURE MANAGEMENT POLYESTER MESH SHIRT
J1500 | CYPRESS Page 4

LADIES' MOISTURE MANAGEMENT POLYESTER MESH SHIRT
W1500 | LADY CYPRESS Page 4

New

LACE-UP HOODED SWEATSHIRT
4700 | ALL-STAR Page 20



New

LACE-UP HOODED PERFORMANCE FLEECE
6700 | PLAYMAKER Page 20

New

LIGHT WEIGHT SOFT SHELL BONDED JACKET
3920 | SOMERSET Page 28

LADIES' LIGHT WEIGHT SOFT SHELL BONDED JACKET
L3920 | LADY SOMERSET Page 28

New



J1500 | CYPRESS

MOISTURE MANAGEMENT POLYESTER SHIRT

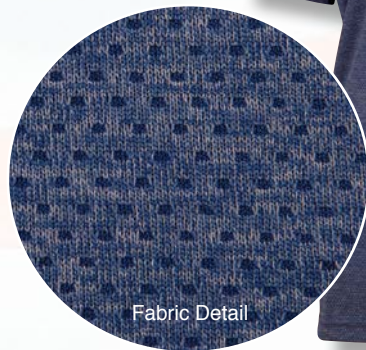
100% polyester moisture management mesh shirt with 3 button placket, hemmed sleeve and a self-collar.

Union Made in the USA. Sizes: S-5XL

true blue J1501, **blaze red** J1502, **jet black** J1505



New



W1500 | LADY CYPRESS

MOISTURE MANAGEMENT POLYESTER SHIRT

100% polyester moisture management mesh shirt with 2 button placket, hemmed sleeve and a self-collar.

Union Made in the USA. Sizes: S-3XL

true blue W1501, **blaze red** W1502, **jet black** W1505



J7240 | ELITE

MOISTURE MANAGEMENT POLYESTER SHIRT

100% polyester moisture management shirt with a “basketweave” pattern. 2-button placket with matching collar and sleeve welts. Union Made in the USA. Sizes: S-5XL
navy J7241, red J7242, white J7251, gunmetal J7256

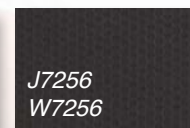
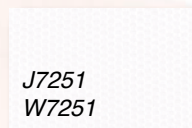
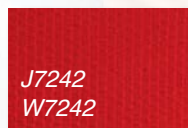
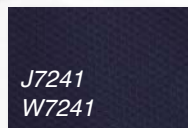
W7240 | LADY ELITE

MOISTURE MANAGEMENT POLYESTER SHIRT

100% polyester moisture management shirt with a “basketweave” pattern. 2-button placket with matching collar and hemmed sleeve. Union Made in the USA. Sizes: S-3XL
navy W7241, red W7242, white W7251, gunmetal W7256



Fabric Detail



J7220 | CLASSIC

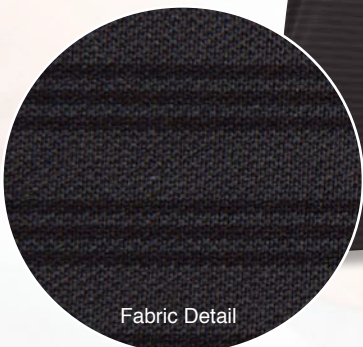
MOISTURE MANAGEMENT POLYESTER SHIRT

100% polyester moisture management shirt with a cationic tonal triple stripe, white has contrasting black stripe. 3-button placket with matching buttons and hemmed sleeves. Matching collars on all colors except white has contrasting black collar. Union Made in the USA. Sizes: S-5XL
navy J7221, cobalt J7230, white w/ contrasting black stripe and solid black collar J7231, khaki J7235, gunmetal J7236

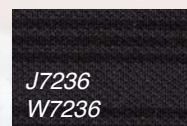
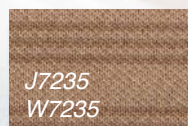
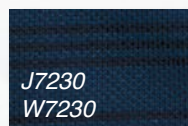
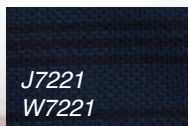
W7220 | LADY CLASSIC

LADIES' MOISTURE MANAGEMENT POLYESTER SHIRT

100% polyester moisture management shirt with a cationic tonal triple stripe, white has contrasting black stripe. 2-button placket with matching buttons and hemmed sleeves. Matching collars on all colors except white has contrasting black collar. Union Made in the USA. Sizes: S-3XL
navy W7221, cobalt W7230, white w/contrasting black stripe and solid black collar W7231, khaki W7235, gunmetal W7236



Fabric Detail





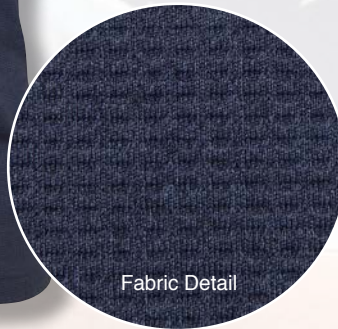
J6120 | BIGHORN

MOISTURE MANAGEMENT POLYESTER SHIRT

Moisture management polyester cationic dyed waffle knit shirt with self-collared and raglan sleeves. Matching 2-button placket and hem sleeves.

Union Made in the USA. Sizes: S-5XL

indigo heather J6121



Fabric Detail

J5000 | McALLISTER

MOISTURE MANAGEMENT SHIRT

100% polyester cat-dyed two-toned satin stitch moisture management shirt with a 3-button placket, solid collar and welts.

Union Made in USA. Sizes: S-5XL

navy J5001, **black** J5005

W5000 | LADY McALLISTER

MOISTURE MANAGEMENT SHIRT

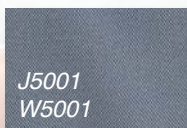
100% polyester cat-dyed two-toned satin stitch ladies moisture management shirt with a 2-button placket, solid collar and hemmed sleeves.

Union Made in USA. Sizes: S-3XL

navy W5001, **black** W5005



Fabric Detail





J4000 | CREST

FASHION SHIRT WITH SPANDEX

96% polyester/ 4% Spandex waffle pattern shirt with a solid collar. 3-button placket, hem sleeve and bottom. Union Made in USA. Sizes: S-5XL
red J4002, **gunmetal** J4005, **cobalt** J4010, **stone** J4015, **moss** J4016, **coral** J4017, **black** J4045

W4000 | LADY CREST

LADIES' FASHION SHIRT WITH SPANDEX

96% polyester/ 4% Spandex waffle pattern shirt with a solid collar. 2-button placket, hem sleeve and bottom. Union Made in USA. Sizes: S-3XL
red W4002, **gunmetal** W4005, **cobalt** W4010, **stone** W4015, **moss** W4016, **coral** W4017, **black** W4045



J4020 | STILLWELL

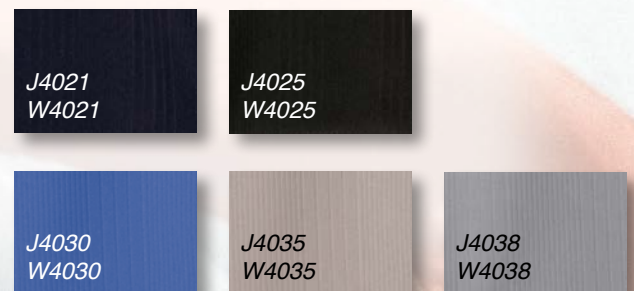
MOISTURE MANAGEMENT DROP-NEEDLE INTERLOCK SHIRT

100% polyester drop-needle vertical stripe interlock polo. Solid collar and sleeve welt. 3-button placket with a set-in sleeve. Union Made in the USA. Sizes: S-5XL
navy J4021, **black** J4025, **cobalt blue** J4030, **stone** J4035, **oxford** J4038

W4020 | LADY STILLWELL

LADIES' MOISTURE MANAGEMENT DROP-NEEDLE INTERLOCK SHIRT

100% polyester drop-needle vertical stripe interlock polo. 2-button placket with a solid-collar, set-in sleeve with a hemmed cuff. Union Made in the USA. Sizes: S-3XL
navy W4021, **black** W4025, **cobalt blue** W4030, **stone** W4035, **oxford** W4038





J6140 | SUMMERS

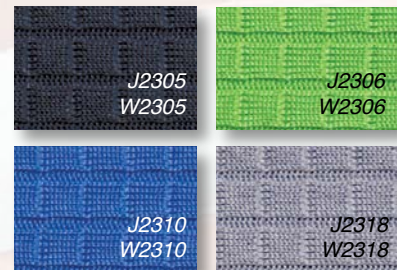
MOISTURE MANAGEMENT DIAMOND-PATTERNED SHIRT

100% polyester diamond-patterned moisture management shirt with matching 2-button placket. Raised rib collar and solid sleeve welts. Union Made in the USA. Sizes: S-5XL
navy J6141, black J6145, white J6151

W6140 | LADY SUMMERS

LADIES' MOISTURE MANAGEMENT DIAMOND-PATTERNED SHIRT

100% polyester diamond-patterned moisture management shirt with matching 2-button placket. Raised rib collar and solid sleeve welts. Union Made in the USA. Sizes: S-3XL
navy W6141, black W6145, white W6151



J2300 | WESTON

FASHION MOISTURE MANAGEMENT SHIRT

100% Polyester Fashion Moisture Management box pattern textured shirt with a 3-button placket. Solid knit collar and sleeve welts. Union Made in the USA. Sizes: S-5XL
black J2305, green J2306, blue J2310, grey J2318

W2300 | LADY WESTON

LADIES' PERFORMANCE SPORT SHIRT

Fashion 100% Polyester Moisture Management box pattern textured shirt with a 2-button placket. Solid knit collar with hemmed sleeves. Union Made in the USA. Sizes: S-3XL
black W2305, green W2306, blue W2310, grey W2318

J0000 | JAZZ

MOISTURE MANAGEMENT SHIRT

100% polyester Moisture Management shirt with a flat back mesh pattern. "Roped" striped collar, solid welts and a matching 3-button placket. Union made in USA. Sizes: S-5XL
navy/khaki rope J0001, **red/white rope** J0002, **black/khaki rope** J0005

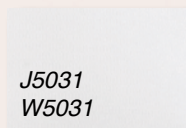
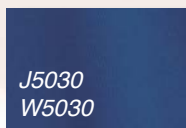
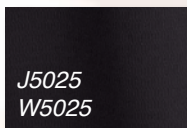
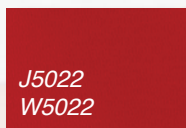
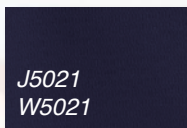
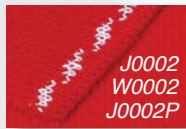
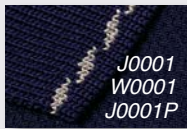
J0000P | JAZZ W/POCKET

navy/khaki rope J0001P, **red/white rope** J0002P, **black/khaki rope** J0005P

W0000 | LADY JAZZ

LADIES' MOISTURE MANAGEMENT SHIRT

100% polyester Moisture Management shirt with a flat back mesh pattern. "Roped" striped collar, hemmed sleeve matching 2-button placket. Union made in USA. Sizes: S-3XL
navy/khaki rope W0001, **red/white rope** W0002, **black/khaki rope** W0005



J5020 | ASHTON

MOISTURE MANAGEMENT SHIRT

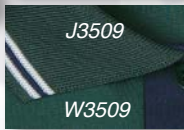
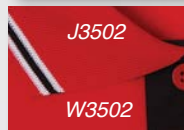
100% polyester off set mesh moisture management shirt. 3-button placket with matching button, set-in hemmed sleeves and a self-collar. Union Made in USA. Sizes: S-5XL
navy J5021, **red** J5022, **black** J5025, **blue** J5030, **white** J5031

W5020 | LADY ASHTON

MOISTURE MANAGEMENT SHIRT

100% polyester off-set mesh ladies moisture management shirt. 2-button placket with matching button, set-in hemmed sleeves and a self-collar. Union Made in USA. Sizes: S-3XL
navy W5021, **red** W5022, **black** W5025, **blue** W5030, **white** W5031,

MOISTURE MANAGEMENT SHIRTS



J3500 | NAPA

FASHION MOISTURE MANAGEMENT SHIRT

100% polyester moisture management baby swiss pique shirt. 2-button placket with stripped collars and welts using a 3-color trim pattern. Union Made in the USA. Sizes: S-5XL

Navy body with Red placket w Navy, White, Red stripes J3501, Red body with Black placket w Red, White, Black stripes J3502, Black body with Grey placket w Black, White, Grey stripes J3505, Dk Green body with Navy placket w Dk Green, White, Navy stripes J3509, White body with Navy placket w White, Navy, Red stripes J3511

W3500 | LADY NAPA

LADIES' FASHION MOISTURE MANAGEMENT SHIRT

Ladies 100% polyester moisture management baby-swiss pique shirt. 2-button placket with stripped collars and welts using a 3-color trim pattern. Union Made in the USA. Sizes: S-3XL

Navy body with Red placket w Navy, White, Red stripes W3501, Red body with Black placket w Red, White, Black stripes W3502, Black body with Grey placket w Black, White, Grey stripes W3505, Dk Green body with Navy placket w Dk Green, White, Navy stripes W3509, White body with Navy placket w White, Navy, Red stripes W3511

J3300 | EDGE

FASHION MOISTURE MANAGEMENT SHIRT

100% Polyester Swiss Fashion Moisture Management shirt with contrasting armhole piping and a 3-button placket. Tipped collar, matching piping with hemmed sleeve. Union Made in the USA. Sizes: S-5XL

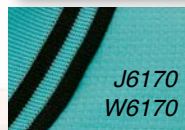
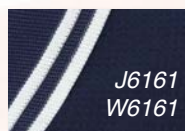
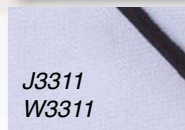
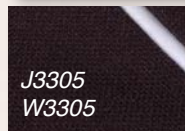
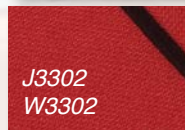
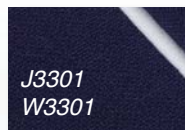
navy J3301, red J3302, black J3305, white J3311

W3300 | LADY EDGE

LADIES' FASHION MOISTURE MANAGEMENT SHIRT

100% Polyester Swiss Fashion Moisture Management shirt with contrasting armhole piping and a 2-button placket. Tipped collar, matching piping with hemmed sleeve. Union Made in the USA. Sizes: S-3XL

navy W3301, red W3302, black W3305, white W3311



J6160 | LAVA

SPANDEX MOISTURE MANAGEMENT TEXTURED SHIRT

94% polyester / 6% spandex moisture management textured shirt with a matching 2-button placket. Matching collar with contrast tipping and solid matching hem sleeve. Union Made in the USA. Sizes: S-5XL

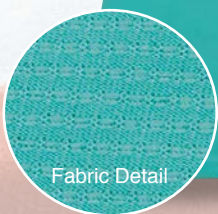
navy w/white tip J6161 black w/white tip J6165
aqua w/black tip J6170 white w/black tip J6171

W6160 | LADY LAVA

LADIES' SPANDEX MOISTURE MANAGEMENT TEXTURED SHIRT

94% polyester / 6% spandex moisture management textured shirt with a matching 2-button placket. Matching collar with contrast tipping and hem sleeve. Union Made in the USA. Sizes: S-3XL

navy w/white tip W6161 black w/white tip W6165
aqua w/black tip W6170 white w/black tip W6171



Fabric Detail



gunmetal	J1136 W1136
khaki	J1135 W1135
aqua	J1123 W1123
red	J1122 W1122
charcoal	J1139 W1139
sunburst	J1124 W1124
blue	J1130 W1130
white	J1131 W1131
green	J1126 W1126
black	J1125 W1125
orange	J1127 W1127
dark green	J1129 W1129
grey	J1138 W1138
violet	J1132 W1132
navy	J1121 W1121

J1120 | PERFORMER

MOISTURE MANAGEMENT SHIRT

100% polyester moisture management baby swiss pique polo. Solid color shirt with solid knit collar, sleeve welts and three button placket. Union Made in USA. Sizes: S-5XL **navy** J1121, **red** J1122, **aqua** J1123, **black** J1125, **sunburst** J1124, **green** J1126, **orange** J1127, **dark green** J1129, **blue** J1130, **white** J1131, **violet** J1132, **khaki** J1135, **gunmetal** J1136, **grey** J1138, **charcoal** J1139

W1120 | LADY PERFORMER

LADIES' MOISTURE MANAGEMENT SHIRT

100% polyester moisture management baby swiss pique polo shirt. Solid color shirt with hemmed sleeves, and 2-button placket. Union Made in USA. Sizes: S-3XL **navy** W1121, **red** W1122, **aqua** W1123, **black** W1125, **sunburst** W1124, **green** W1126, **orange** W1127, **dark green** W1129, **blue** W1130, **white** W1131, **violet** W1132, **khaki** W1135, **gunmetal** W1136, **grey** W1138, **charcoal** W1139



J6100 | DUBLIN

BABY SWISS PIQUE SHIRT

100% polyester baby swiss pique polo with contrast bottom panel. Hem sleeve and matching 2-button placket. Union Made in the USA. Sizes: S-5XL

Top/Bottom Colors:

navy/oxford J6101, **black/gunmetal** J6105, **blue/black** J6110
navy/red J6111, **black/red** J6112



J7200 | LEGEND

MOISTURE MANAGEMENT POLYESTER SHIRT

62% cotton/ 38% polyester pique shirt with a 2-button placket, hemmed sleeves and a contrasting striped collar. Union Made in the USA. Sizes: S-5XL

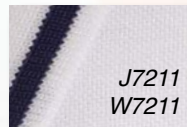
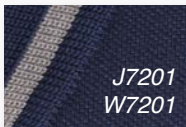
navy w/ charcoal stripe J7201,
black w /charcoal stripe J7205,
white w/ navy stripe J7211

W7200 | LADY LEGEND

MOISTURE MANAGEMENT POLYESTER SHIRT

62% cotton/ 38% polyester pique shirt with a short no-button placket, hemmed sleeves and a contrasting striped collar. Union Made in the USA. Sizes: S-3XL

navy w/ charcoal stripe W7201,
black w /charcoal stripe W7205,
white w/ navy stripe W7211



J180 | SKYLINE

POLY/COTTON BLEND PIQUE SHIRT

Blended 60% cotton/ 40% polyester double pique. Matching knit collar, hemmed sleeve, 2-button placket with matching buttons, left chest pocket, hemmed bottom. Union Made in USA. Sizes: S-5XL
navy J181, **red** J182, **royal** J183, **black** J185, **dark green** J189,
white J191



J4500 | NATIONAL

COTTON SOLID SPORT SHIRT

100% cotton pique knit. Solid color with knit collar and welts, three rim pearl button placket. Union Made in USA. Sizes: S-5XL

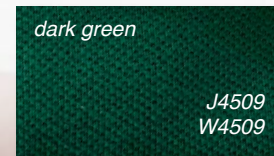
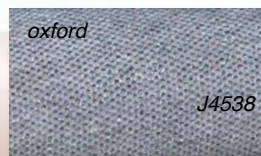
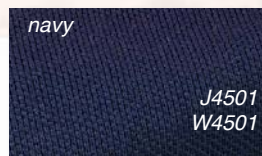
navy J4501, **red** J4502, **black** J4505, **dark green** J4509, **white** J4511, **purple** J4512, **oxford** J4538

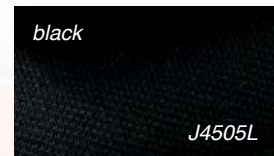
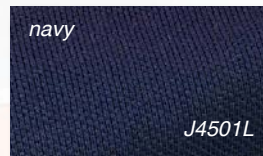
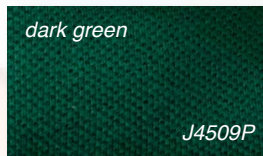
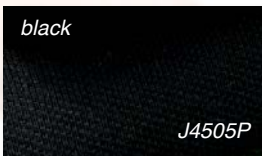
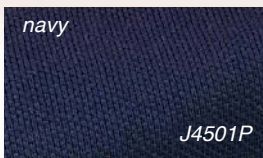
W4500 | LADY NATIONAL

LADIES' SOLID 100% COTTON PIQUE

100% cotton ladies shirt. Solid color knit collar and welts with 2 rim pearl buttons. Union Made in USA. Sizes: S-3XL

navy W4501, **red** W4502, **black** W4505, **dark green** W4509, **white** W4511, **purple** W4512,





J4500P | NATIONAL W/POCKET
100% cotton pique knit. Solid color with knit collar and welts, left chest pocket, three rim pearl button placket.
Union Made in USA. Sizes: S-5XL
navy J4501P, **black** J4505P, **dark green** J4509P

J4500L | NATIONAL LONG SLEEVE
100% cotton pique knit. Long sleeve polo, solid color with knit collar and cuffs, three rim pearl button placket. Union Made in USA. Sizes: S-5XL **navy** J4501L, **black** J4505L

USA | FREEDOM

PATRIOTIC SPORT SHIRT

100% cotton pique. Solid body with "patriotic themed" knit collar and sleeve welt. 3-button placket with dyed-to-match buttons. Union Made in USA. Sizes: S-5XL
navy USA102, white USA003



USA102



USA003

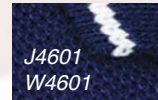
WUSA | LADY FREEDOM

LADIES' PATRIOTIC SPORT SHIRT

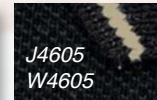
100% cotton pique. Ladies' fit, solid body with stars-and-stripes knit collar and solid knit welt on shorter set-in sleeve. 3-button placket with dyed-to-match buttons, hemmed bottom. Union Made in USA. Sizes: S-3XL
white WUSA03



WUSA03



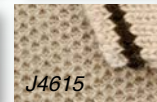
J4601
W4601



J4605
W4605



J4611



J4615

J4600 | TRADITION

COTTON SPORT SHIRT

100% cotton pique knit. Matching knit collar and welts with narrow contrasting accent stripe, three rim pearl buttons. Union Made in USA. Sizes: S-5XL
navy-white stripe J4601, black-khaki stripe J4605, white-navy stripe J4611, khaki-black J4615,

J4600P | TRADITION W/POCKET

navy-white stripe J4601P, black-khaki stripe J4605P, white-navy stripe J4611P

W4600 | LADY TRADITION

LADIES' COTTON SPORT SHIRT

100% cotton pique knit. Ladies' cut, 2-button placket, matching knit collar and welts with narrow contrasting accent stripe. Union Made in USA. Sizes: S-3XL
navy-white stripe W4601, black-khaki stripe W4605



J4605

W4605

J5060 | HAWK

LONG SLEEVE MOISTURE MANAGEMENT SHIRT

Solid-colored long-sleeve, 100% polyester baby swiss pique shirt with matching 3-button placket. Union Made in USA. Sizes: S-5XL
black J5065



J4060 | SHOAL

QUARTER-ZIP FASHION LONG SLEEVE SHIRT

Men's quarter-zip, long sleeve 100% poly jersey with an open bottom. Zip-thru contrasting inside collar with knit cuffs. Union Made in USA. Sizes: S-5XL
black w/stone J4065, stone w/black J4075

MEN'S



LADY SHOAL

See page 23 for details



FLEECE JACKETS



5202



5205



5201

5200 | EXPLORER

POLAR FLEECE JACKET

100% Polyester polar fleece full zip jacket in solid colors. Side entry pockets and elastic bottom and cuffs. Union made in USA. Sizes: S-5XL
navy 5201, red 5202, black 5205



5305



5301



5302

5300 | TUNDRA

POLAR FLEECE PULLOVER

100% Polyester polar fleece 1/4 zip pullover in solid colors. Side entry pockets, hemmed open bottom and elastic cuffs. Union made in USA. Sizes: S-5XL
navy 5301, red 5302, black 5305



1765



1761



1778

1760 | STEWART

DOUBLE-KNIT FLEECE FULL ZIP

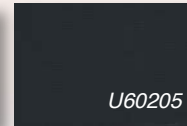
Full zip 85% polyester/ 15% cotton fleece sweatshirt jacket with knit collar, sleeve cuffs and bottom. Front welt pockets and contrasting sleeves. Union Made in USA. Sizes: S-5XL
navy 1761, black 1765, charcoal 1778



◀ **U602** | LEGACY

CREWNECK SWEATSHIRT

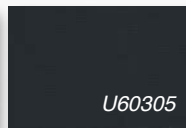
Soft 80% cotton/20% polyester heavyweight 9 oz. crew neck fleece sweatshirt. Union Made in USA. Sizes: S-5XL
navy U60201, black U60205, charcoal U60258



U603 | LEGACY PULLOVER ▶

FLEECE HOODIE

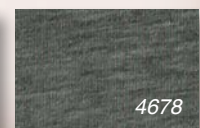
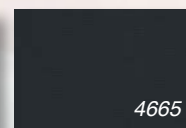
Soft 80% cotton/ 20% polyester heavyweight 9 oz. fleece pullover hoodie. Muff pockets.
 Union Made in USA. Sizes: S-5XL
navy U60301, black U60305, charcoal U60338



◀ **4660** | LEGACY HOOD

CLASSIC FULL ZIP HOODIE

Soft 80% cotton/20% polyester heavyweight 9 oz. fleece full zip hooded sweatshirt with kangaroo pockets.
 Union Made in USA. Sizes: S-5XL
navy 4661, black 4665, charcoal 4678



New



	U6371L	navy
	U6372L	red
	U6374L	gold
	U6375L	black
	U6378L	grey
	U6379L	kelly
	U6382L	red/black
	U6383L	carolina/navy
	U6388L	neon green/black
	U6389L	purple/black

Please include lace style# with order.
Laces will be included (not laced)
Custom colors available for 144 pieces or more.

Lace color is optional from the chart on this page. Other custom color options are available with an order of 144 pieces or more. We will work with you on finding a color that you and your customer want.

4700 | ALL-STAR

LACE-UP HOODED SWEATSHIRT

9 ounce 80% cotton/ 20% poly sweatshirt with a "lace-up" neck, and front pockets.

Union Made in USA. Unisex Sizing: S-5XL

solid navy 4701, solid black 4705, solid charcoal 4738

Lace Colors:

navy U6371L, red U6372L, gold U6374L, black U6375L, grey U6378L, kelly U6379L, red/black U6382L, carolina/navy U6383L, neon green/black U6388L, purple/black U6389L

New

6700 | PLAYMAKER

LACE-UP HOODED PERFORMANCE FLEECE

100% poly double-knit performance fleece pullover hoodie with a "lace-up" neck. Open bottom, knit cuffs and front pouch pockets. Union Made in USA. Unisex Sizing: S-5XL
navy 6701, black 6705

Lace Colors:

navy U6371L, red U6372L, gold U6374L, black U6375L, grey U6378L, kelly U6379L, red/black U6382L, carolina/navy U6383L, neon green/black U6388L, purple/black U6389L





Microfiber



Polar Fleece

5220 | SHADOW

FASHION POLAR FLEECE JACKET

Polar fleece jacket with fashion Microfiber top panel. Full-zip front, side pockets with self-elastic cuff and bottom. Union Made in USA. Sizes: S-5XL
navy 5221, black 5225

6400 | OMEGA

DOUBLE-KNIT FLEECE PULLOVER

100% polyester double-knit performance fleece pullover hoodie. Contrast hood, open bottom and knit cuffs and front pouch pockets. Union Made in USA. Sizes: S-5XL
navy w/fashion blue 6401
black w/charcoal 6405





1700 | FENWAY

POPLIN BASEBALL JACKET

65% polyester/35% soft cotton micro poplin with 100% nylon lining. Full zip front with antique brass zipper, knit trim collar, cuff and waistband with accent striping, contrasting set-in sleeve, welt pockets, inside pocket. Union Made in USA. Sizes: S-5XL
navy/stone 1701



1470 | SOLID SATIN QUILT LINED

SOLID SATIN QUILT LINED

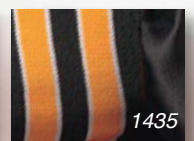
Water resistant 100% DuPont® nylon satin with winterweight 100% polyester quilt lining. Full snap front, double welt storm flap, matching solid knit trim on collar, cuff and waistband, raglan sleeve, slash pockets. Union made in USA. Sizes: S-5XL
navy 1471, black 1475



1430 | PRO SATIN QUILTED

SATIN AWARD JACKET WITH STRIPED TRIM

Water resistant 100% DuPont® nylon satin with winterweight 100% polyester quilt lining. Full snap front, double welt storm flap, striped knit trim on collar, cuff and waistband, raglan sleeve, slash pockets. Union made in USA. Sizes: S-5XL
navy w/navy-white-gold 1431, black w/black-white-gold 1435



L4060 | LADY SHOAL

LADIES' FULL ZIP JACKET

100% polyester full zip ladies' jacket. Zip thru collar, welt pockets with hemmed bottom and sleeves. Union Made in the USA.

Sizes: S-3XL

black L4065, **stone** L4075

LADIES' JACKET



MEN'S SHOAL

See page 17 for details



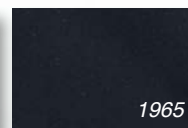
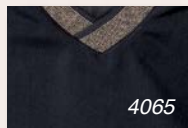
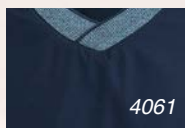
4300 | MENTONE

FASHION PULLOVER

Unlined Microfiber 1/4 zip windshirt with matching knit collar and exposed coil zipper. Side seam pockets, elastic cuffs and an open bottom. Union Made in the USA. Sizes: S-5XL

navy 4301, **black** 4305, **periwinkle** 4310





4060 | FAIRVIEW

MICROFIBRE WINDSHIRT

Microfibre windshirt with nylon lining. Athletic lap v-neck knit collar, set-in sleeve, birdseye trim with solid tipping on collar, cuff and waistband, convenient side seam pockets. Union Made in USA.

Sizes: S-5XL

navy 4061, black 4065

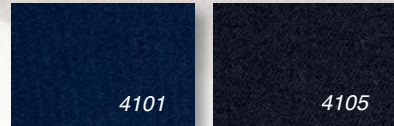
1960 | FINLEY

POPLIN GOLF PULLOVER

Unlined, 65% polyester/35% soft cotton micro poplin. Soft knit lap crewneck collar, set-in sleeve, convenient side seam pockets, matching knit trim at cuff and waistband.

Union Made in USA. Sizes: S-5XL

navy 1961, black 1965



◀ **4100** | JOURNEY

MICROFIBRE WINDSHIRT

Unlined, solid colored Microfibre windshirt. Side entry pockets with drop crew neck and matching knit. Union Made in USA. Sizes: S-5XL

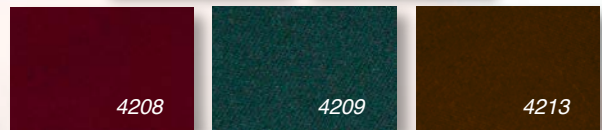
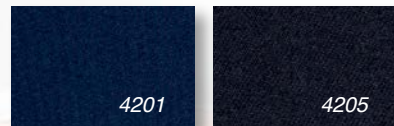
navy 4101, **black** 4105, **burgundy** 4108, **dark green** 4109, **brown** 4113

6900 | ELEMENTS ▶

RAIN JACKET

100% Nylon Taslon rain jacket with breathable micro-waterproof coating. Hidden hood, mesh lining and front zipper closure with snap storm flap. Adjustable velcro cuffs and flap closure top entry pockets. *Garment is not seam sealed.

Union Made in USA. Sizes: S-5X
black 6905



◀ **4200** | WEEKEND

MICROFIBRE LINED WINDSHIRT

Solid colored Microfibre windshirt with black nylon lining. Side entry pockets with drop crew neck and matching knit.

Union Made in USA. Sizes: S-5XL
navy 4201, **black** 4205, **burgundy** 4208, **dark green** 4209, **brown** 4213



2800 | LUXURY

MICROFIBRE GENTLEMEN'S JACKET

Microfibre gentlemen's jacket with black nylon lining. Side entry pockets with drop neck and matching knit, and open bottom styling. Woodtone button cuff closure.

Union Made in USA. Sizes: S-5XL

navy 2801, black 2805, burgundy 2808, brown 2813

2860 | DAWSON

MICROFIBRE SPORT JACKET

Microfibre jacket with black nylon lining. Zip-thru contrasting collar, set-in sleeve with solid nylon knit cuff, zip front, nylon knit waistband, inside pocket. Union Made in USA. Sizes: XS-5XL

navy/khaki 2861, black/silver 2865



4920 | DOWNTOWN

MICROFIBRE SPORT JACKET

Full zip, Microfibre jacket with black nylon lining. Two-color collar with a contrasting storm flap. Fake cape with an inside pocket and gathered elastic waist. Union Made in USA. Sizes: S-5XL
navy/gold 4921, black/khaki 4925, green/navy 4929

4490 | WOODCLIFF

GENTLEMAN'S JACKET

65% polyester/35% soft cotton micro Poplin. Full zip jacket, lightly lined with black nylon, contrasting color inside collar with drawstrings and cordlocks, front cape for clean finish embroidery, set-in sleeves with self-elastic cuff, welt pockets, inside pocket, set-on self-elastic waistband. Union made in USA. Sizes: S-5XL
navy w/gray 4491, black w/khaki 4495

New

3920 | SOMERSET

LIGHT WEIGHT BONDED FLEECE JACKET

Full-zip bonded poly soft-shell jacket with inside mesh backing for a slightly lighter-weight style.

Union Made in USA. Sizes: S-5XL

steel blue 3921, **black** 3925



New

L3920 | LADY SOMERSET

LADIES' LIGHT WEIGHT BONDED FLEECE JACKET

Ladies' full-zip bonded poly soft-shell jacket with inside mesh backing for a slightly lighter-weight style.

Union Made in USA. Sizes: S-3XL

steel blue L3921, **black** L3925





3800 | MAXFIELD

SOFT SHELL BONDED FLEECE VEST

94% polyester / 6% spandex bonded fleece full zip vest. A full zip-through collar with an additional fashion right-chest zipper. Welt pockets and a hemmed bottom.

Union Made in USA. Sizes: S-5XL
navy 3801, black 3805



L3800 | LADY MAXFIELD

LADIES' SOFT SHELL BONDED FLEECE VEST

94% polyester / 6% spandex bonded fleece full zip vest. A full zip-through collar with an additional fashion right-chest zipper. Welt pockets and a hemmed bottom.

Union Made in USA. Sizes: S-3XL
navy L3801, black L3805

3720 | BUTTE

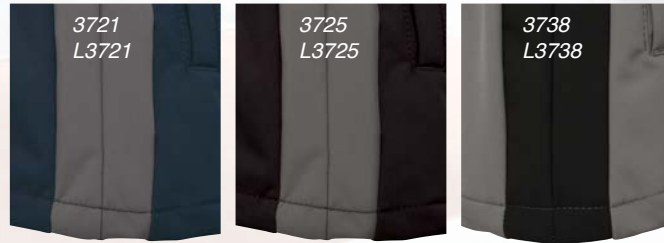
SOFT SHELL CONTRAST JACKET

94% polyester/6% spandex bonded fleece full zip jacket with side panel contrast. Zip through collar and additional right chest fashion zipper. Self-elastic cuffs, welt pockets, inside storm flap and hemmed open-bottom. Union Made in USA. Sizes: S-5XL

- navy w/charcoal 3721
- black w/charcoal 3725
- charcoal w/black 3738



Side Panel Detail



L3720 | LADY BUTTE

SOFT SHELL LADIES' CONTRAST JACKET

94% polyester/6% spandex bonded fleece full zip jacket with side panel contrast. Zip through collar and additional right chest fashion zipper. Self-elastic cuffs, welt pockets, inside storm flap and hemmed open-bottom. Union Made in USA. Sizes: S-3XL

- navy w/charcoal L3721
- black w/charcoal L3725
- charcoal w/black L3738



3700 | CHALLENGER**SOFT SHELL JACKET**

94% polyester/6% spandex bonded fleece full zip jacket with zip through collar and additional right chest fashion zipper. Self-elastic cuff, welt pockets, inside storm flap and hemmed open-bottom. Union Made in USA. Sizes: S-5XL
navy 3701, black 3705, charcoal 3718

**L3700** | LADY CHALLENGER**SOFT SHELL LADIES JACKET**

94% polyester/6% spandex bonded fleece full zip jacket with zip through collar and additional right chest fashion zipper. Self-elastic cuff, welt pockets, inside storm flap and hemmed open-bottom. Union Made in USA. Sizes: S-3XL
navy L3701, black L3705, charcoal L3718



Inner "zip-out" vest

3600 | ADVANTAGE

3-IN-1 SYSTEMS JACKET

3-in-1 jacket, micro poplin shell, double entry pockets, zip-thru collar, inner, zip-out vest of micro polar fleece. Union Made in USA.

Sizes: S-5XL

navy 3601, black 3605



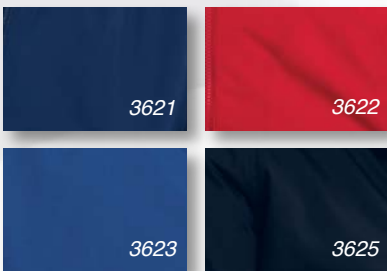
3040 | KENDALL

UTILITY JACKET

65% polyester/35% cotton soft micro poplin, quilted nylon lining with 3.3 oz. polyfil. Zipper/snap front closure, faux cape, set-in sleeve with self-elastic cuff, contrasting color detail, inside pocket, self-elastic waist.

Union Made in USA. Sizes: S-5XL

navy/khaki 3041, black/khaki 3045, dark green/khaki 3049



3620 | VOYAGE

CLASSIC SQUALL JACKET

Heavyweight poplin shell, lined with charcoal micro polar fleece lining. Zip-thru collar, slash pockets, inside pocket, knit cuff and waistband.

Union Made in USA. Sizes: S-5XL

navy 3621, **red** 3622, **royal** 3623, **black** 3625

L6000 | DARBY

LADIES' CLASSIC SQUALL JACKET

Heavyweight Poplin with charcoal micro polar fleece lining. Ladies' styled jacket features zip-thru collar, open cuff and bottom with double welt pockets.

Union Made in USA. Sizes: S-3XL

navy L6001, **red** L6002, **black** L6005, **blue** L6010, **sage** L6016, **coral** L6017



6800 | CANYON

FULL-FIT DUCK JACKET

100% cotton heavy-weight Canvas Duck jacket with quilt lining. Raglan sleeves, pouch pockets, inside pocket and brass zipper. Knit cuffs and with modified waistband and corduroy tone on tone matching collar.

Union Made in USA. Sizes: S-5XL
navy 6801, **spice** 6804, **black** 6805



130503

1300 | CUMBERLAND

HOODED CANVAS DUCK JACKET

Heavyweight canvas jacket lined with 100% polyester black diamond patterned thermal. Drawstring hood, full zip front with large brass pull, raglan sleeve with nylon knit cuff and waistband, large pouch pockets, inside pocket. Union Made in USA. Sizes: S-5XL
spice 1304, black 130503



1304



6505

6500 | STATION

HEAVYWEIGHT CANVAS DUCK JACKET

100% cotton heavyweight Canvas Duck jacket with a cotton sheeting lining, tone-on-tone matching corduroy collar and a right front-chest fashion zippered pocket. Full zip brass zippered front with slash pockets and an adjustable snap cuff. Waist-length open-bottom. Union Made in USA.
Sizes: S-5XL
black 6505

INDEXED BY SERIES NUMBER

SERIES	NAME	PAGE
1300	Cumberland	34
1430	Pro Satin Quilted	22
1470	Solid Satin Quilted	22
1700	Fenway	22
1760	Stewart	18
1960	Finley	24
2800	Luxury	26
2860	Dawson	26
3040	Kendall	32
3600	Advantage	32
3620	Voyage	33
3700	Challenger	31
3720	Butte	30
3800	Maxfield	29
3920	Somerset	28
4060	Fairview	24
4100	Journey	25
4200	Weekend	25
4300	Mentone	23
4490	Woodcliff	27
4660	Legacy Hood	19
4700	All-Star	20
4920	Downtown	27
5200	Explorer	18
5220	Shadow	21
5300	Tundra	18
6400	Omega	21
6500	Station	34
6700	Playmaker	20
6800	Canyon	33
6900	Elements	25
J0000	Jazz	9
J0000P	Jazz w/ pocket	9
J1120	Performer	11
J1500	Cypress	4
J180	Skyline	13
J191	Skyline (White)	13
J2300	Weston	8
J3300	Edge	10
J3500	Napa	10
J4000	Crest	7
J4020	Stillwell	7
J4060	Shoal	17
J4500	National	14
J4511	National White	14

J4500L	National Long Sleeve	15
J4500P	National w/pocket	15
J4600	Tradition	16
J4611	Tradition White	15
J4600P	Tradition w/pocket	16
J4611P	Tradition White w/pocket	16
J5000	McAllister	6
J5020	Ashton	9
J5060	Hawk	17
J6100	Dublin	12
J6120	Bighorn	6
J6140	Summers	8
J6160	Lava	10
J7200	Legend	13
J7220	Classic	5
J7240	Elite	5
L3700	Lady Challenger	31
L3720	Lady Butte	30
L3800	Lady Maxfield	29
L3920	Lady Somerset	28
L4060	Lady Shoal	23
L6000	Darby	33
U602	Legacy Crewneck	19
U603	Legacy Pullover	19
USA	Freedom	16
W0000	Lady Jazz	9
W1120	Lady Performer	11
W1500	Lady Cypress	4
W2300	Lady Weston	8
W3300	Lady Edge	10
W3500	Lady Napa	10
W4000	Lady Crest	7
W4020	Lady Stillwell	7
W4500	Lady National	14
W4511	Lady National (White)	14
W4600	Lady Tradition	16
W5000	Lady McAllister	6
W5020	Lady Ashton	9
W6140	Lady Summers	8
W6160	Lady Lava	10
W7200	Lady Legend	13
W7220	Lady Classic	5
W7240	Lady Elite	5
WUSA	Lady Freedom	16

INDEXED BY SERIES NAME

NAME	SERIES	PAGE
Advantage	3600	32
All-Star	4700	20
Ashton	J5020	9
Bighorn	J6120	6
Butte	3720	30
Canyon	6800	33
Challenger	3700	31
Classic	J7220	5
Crest	J4000	7
Cumberland	1300	34
Cypress	J1500	4
Darby	L6000	33
Dawson	2860	26
Downtown	4920	27
Dublin	J6100	12
Edge	J3300	10
Elements	6900	25
Elite	J7240	5
Explorer	5200	18
Fairview	4060	24
Fenway	1700	22
Finley	1960	24
Freedom	USA	16
Hawk	J5060	17
Jazz	J0000	9
Jazz w/ pocket	J0000P	9
Journey	4100	25
Kendall	3040	32
Lady Ashton	W5020	9
Lady Butte	L3720	30
Lady Challenger	L3700	31
Lady Classic	W7220	5
Lady Crest	W4000	7
Lady Cypress	W1500	4
Lady Edge	W3300	10
Lady Elite	W7240	5
Lady Freedom	WUSA	16
Lady Jazz	W0000	9
Lady Lava	W6160	10
Lady Legend	W7200	13
Lady Maxfield	L3800	29
Lady McAllister	W5000	6
Lady Napa	W3500	10
Lady National	W4500	14
Lady National (White)	W4511	14
Lady Performer	W1120	11
Lady Shoal	L4060	23
Lady Somerset	L3920	28
Lady Stillwell	W4020	7
Lady Summers	W6140	8
Lady Tradition	W4600	16
Lady Tradition (White)	J4611	16
Tradition w/pocket	J4600P	16
Tradition White w/pocket	J4611P	16
Tundra	5300	18
Voyage	3620	33
Weekend	4200	25
Weston	J2300	8
Woodcliff	4490	27

Bold copy indicates styles that are new for 2018 King Louie product line.



King Louie
america
“ask for the king”

www.kinglouie.com

asi/64860 ppai/337199