

2019 CR-V





Hitting the town or hitting the slopes, why just be a jack-of-all trades, when you can be a master of them, too? When you do it all, it helps to have a car that does as well.

- Overview 02
- Exterior/Styling 04
- Interior 06
- Versatility 08
- Performance & Efficiency 10
- Technology 12
- Honda Sensing™ Technologies 14
- Safety 16
- Accessories 19-22
- Colours & Trims 24
- Specifications 26-28
- Warranty 30
- The Power of Dreams 32





Form, function, fun.

The 2019 CR-V blends practicality with an inner desire for pure driving bliss. The result is a showstopping package of form and function. We've taken a sporty look and personality and jam-packed it with tons of innovative technology and features. The fun-to-drive handling of the CR-V has always made it feel almost more car than SUV, and having a turbocharged engine in the mix should guarantee that drivers can always be on the edge of their seats. If the way we've fallen in love is any indication, the 2019 CR-V is going to be a runaway hit.

Key features: Apple CarPlay™/Android Auto™, Honda Sensing™ Technologies (AWD models only), Remote engine start, Available heated leather-wrapped steering wheel, Available panoramic moonroof

1. None of the features we describe are intended to replace the driver's responsibility to exercise due care while driving. Drivers should not use handheld devices or operate certain vehicle features unless it is safe and legal to do so. Some features have technological limitations. For additional feature information, limitations and restrictions, please visit www.honda.ca/disclaimers and refer to the vehicle's Owner's Manual.
2. Only compatible with certain devices and operating systems. Operation may be dependent upon: 1. GPS satellite signal reception and available cellular data and/or voice connection; or 2. connection to vehicle's built-in Wi-Fi hotspot, if applicable. Associated charges (incl. data plans, roaming charges or other amounts charged by your wireless carrier) may apply.



Hands-free access on the Touring trim makes the CR-V the perfect vehicle for anyone who's got their hands full.

Make a spectacle of yourself.

If the CR-V was on the runway, it would steal the show. And not just because of its bold, aggressive looks. Or its beefed-up athletic stance. Or even the available LED headlights with auto-on/off that ensure it is seen in the best light. There's actually a lot of substance to back up the arresting looks of the 2019 CR-V. Thoughtful touches like an available one-touch panoramic moonroof with tilt feature. Available roof rails for more packing versatility. Attractive available 18" aluminum-alloy wheels to ensure you're outfitted from top to bottom. And a real inner power, thanks to the powerful turbo engine. So many people are out there searching for the total package. And with the 2019 CR-V, they can actually get it.

Key Features: Available power tailgate with programmable height and available hands-free access, Available one-touch power moonroof with tilt feature, Available auto high beam





Get into your zone.

Strong on the outside, luxurious on the inside, the 2019 CR-V is the total package. Standard features like a proximity key entry system with pushbutton start and remote engine starter help to ensure the CR-V is ready to go before you are. Once you're inside, the dual-zone automatic climate control with air-filtration system, available perforated leather-trimmed seating surfaces and available heated leather-wrapped steering wheel create a tailored, luxurious environment no matter the road or the weather. And if the weather does act up, available rain-sensing windshield wipers will help tame whatever the environment throws at you.

Key Features: Multi-angle rearview camera¹ with dynamic guidelines, Heated front seats and available heated rear seats (outboard positions only), Easy fold-down 60/40 split rear seatback, Flat luggage compartment with two-level mode



Available perforated leather-trimmed seating surfaces means everyone will always want to come along for the ride.

1. None of the features we describe are intended to replace the driver's responsibility to exercise due care while driving. Drivers should not use handheld devices or operate certain vehicle features unless it is safe and legal to do so. Some features have technological limitations. For additional feature information, limitations and restrictions, please visit www.honda.ca/disclaimers and refer to the vehicle's Owner's Manual.



Flat-out awesome.

When you're packing your bags for those long summer road trips, never feel the need to pack light. The easy fold-down 60/40 split rear seatback means virtually no luggage is too long or too wide to take along for the drive.

Plus, the luggage compartment has two level modes – full flat mode and capacity max mode – that are designed to help ensure that cargo of almost all shapes and sizes gets where it's going and gets there all in one piece.

Whether you're a thrift-store enthusiast bringing home a flea market find, or a trail warrior loading up your bike and hitting the backwoods before work, the 2019 CR-V has room for most of your favourite activities.





You're on your way with just the push of a button, thanks to the proximity key entry system with pushbutton start, standard on the 2019 CR-V.

Lead the turbocharge.

The 2019 CR-V doesn't hold back on performance. The 1.5-litre, 16-valve, Direct Injection, DOHC, turbocharged 4-cylinder engine provides the CR-V with 190 horsepower¹ and 179 lb.-ft of torque, while the continuously variable transmission (CVT) keeps it all working smoothly. It harnesses that power using the traction of available Real Time AWD™ with Intelligent Control System™ to give you a stable and confident drive, no matter the road.

Key Features: Continuously variable transmission (CVT), Turbocharged 4-cylinder engine, Available Real Time AWD™ with Intelligent Control System™

¹ Horsepower and torque calculations reflect SAE net, Rev. 08/04, SAE J1349 procedures.



Multi-angle rearview camera¹ with dynamic guidelines

Hello, hi-tech.

Tech leads the way in the 2019 CR-V. It boasts features such as the Display Audio System¹ with Apple Carplay™^{1,2}/Android Auto™^{1,2} to make sure your hands stay on the wheel, and the available Honda Satellite-Linked Navigation System™^{1,3} with bilingual Voice Recognition so your eyes stay on the road. While you're driving, the available Honda LaneWatch™ blind spot display¹ (replaced by the Blind Spot Information (BSI) system¹ with Rear Cross Traffic Monitor¹ system on the Touring trim) acts like an extra set of eyes. And when you finally arrive, two available rear USB ports² ensure your passenger's devices are fully charged and ready to go.

Key Features: Available Display Audio¹ system with Apple Carplay™^{1,2}/Android Auto™^{1,2}, Available Honda Satellite-Linked Navigation System™^{1,3} with bilingual Voice Recognition, Available Honda LaneWatch™ blind spot display/Blind Spot Information (BSI) system¹ with Rear Cross Traffic Monitor¹ system, Available rear charging USB ports²

1. None of the features we describe are intended to replace the driver's responsibility to exercise due care while driving. Drivers should not use handheld devices or operate certain vehicle features unless it is safe and legal to do so. Some features have technological limitations. For additional feature information, limitations and restrictions, please visit www.honda.ca/disclaimers and refer to the vehicle's Owner's Manual.
 2. Only compatible with certain devices and operating systems. Operation may be dependent upon: 1. GPS satellite signal reception and available cellular data and/or voice connection; or 2. connection to vehicle's built-in Wi-Fi hotspot, if applicable. Associated charges (incl. data plans, roaming charges or other amounts charged by your wireless carrier) may apply.
 3. Map database covers major metropolitan areas in Canada and the 48 contiguous U.S. states.



Apple CarPlay™^{1,2}/Android Auto™^{1,2}



7-inch Display Audio System³ with available Honda Satellite-Linked Navigation System™^{1,3} and bilingual Voice Recognition



Available Honda LaneWatch™ blind spot display¹



Available Blind Spot Information (BSI) system¹ with Rear Cross Traffic Monitor¹ system



Available rear USB ports²



Remote engine start



Has a sixth sense for safety.

Honda Sensing™ technologies are designed to help make your drive safer. With intuitive technology and design, we've created a way forward that we can all feel good about. Whether you're driving or sitting in the passenger seat, feel confident in the latest in safety and innovation from Honda.

BRAKE

Forward Collision Warning (FCW) system

The available FCW system¹ is designed to detect the presence of vehicles in front of you and issue audible, visual and tactile alerts if you're approaching with too much speed. If you fail to respond, CMBS[®] is triggered into operation.



Collision Mitigation Braking System™ (CMBS[®])

To help reduce the likelihood or severity of a frontal impact, the available CMBS^{®1} is engineered to apply light brake pressure if you don't respond to FCW system alerts. If it still senses an imminent collision, CMBS[®] is designed to brake forcefully.



Lane Departure Warning (LDW) system

The available LDW system¹ is designed to monitor vehicle lane position and issue visual and tactile alerts if your vehicle drifts into another detected lane without signaling.



Lane Keeping Assist System (LKAS)

The available LKAS¹ is engineered to gently correct your steering if you begin to leave a detected lane without signalling, applying torque progressively to the steering to help guide you back to the centre of the lane.



Road Departure Mitigation (RDM) system

The available RDM system¹ is designed to help steer and even apply the brakes if it detects that your vehicle may leave the road.



Adaptive Cruise Control (ACC) with Low-Speed Follow (LSF)

The available ACC system¹ is designed to keep a constant speed and set following interval behind any vehicle detected in front of you, including an ability to slow, stop and start with the flow of traffic.

The Honda Sensing™ suite of safety and driver assist features are standard on AWD models.

1. None of the features we describe are intended to replace the driver's responsibility to exercise due care while driving. Drivers should not use handheld devices or operate certain vehicle features unless it is safe and legal to do so. Some features have technological limitations. For additional feature information, limitations and restrictions, please visit www.honda.ca/disclaimers and refer to the vehicle's Owner's Manual.

Solid on safety.

At Honda, we strive to provide a high level of standard safety features to help ensure the safety of occupants, other drivers and even pedestrians. This added peace of mind helps our drivers maintain the confidence to enjoy every road to the fullest.

Passive Safety

Advanced Compatibility Engineering™ (ACE™) body structure

The highly innovative, next generation Advanced Compatibility Engineering™ (ACE™) body structure is engineered to help disperse frontal impact energy to enhance occupant protection, while more effectively controlling it in severe collisions to help prevent intrusion into the passenger cabin.

Child safety

The CR-V features childproof rear door locks as well as rear seat Lower Anchors and Tethers for Children (LATCH), which give you a simple and convenient method to install compatible child safety seats without using the vehicle's seat belt system.

HondaLink™ Assist Automatic Emergency Response System

The HondaLink Assist Automatic Emergency Response System^{1,3,4} helps you get the help you need when you need it most. If the airbags deploy, your Display Audio System¹ is engineered to automatically attempt to put you on a call with an operator who will forward your location to first responders if needed. It works with any compatible Bluetooth®-paired phone as long as it has reception, does not require a subscription and gives you peace of mind while you're on the road.

Seat belt safety

The CR-V helps prepare you for the unexpected with 3-point height-adjustable front seat belts with an automatic tensioning system and 3-point rear seat belts.

Six standard airbags

The cabin of the CR-V contains six standard airbags. It features an i-SRS front airbag system as well as side curtain airbags with a rollover sensor system designed to deploy if a rollover is detected. Plus, it has SmartVent™ side airbags, which are designed to deploy in a manner that mitigates the risk of injury to out-of-position or smaller occupants.

Pedestrian safety

Innovative pedestrian safety features include an energy-absorbing hood and front fenders and deformable wiper pivots.



Active Safety

Controlled braking

To assist with safe stopping, the 4-wheel Anti-lock Braking System¹ (ABS) is designed to help you maintain control under hard braking conditions, while Electronic Brake-force Distribution (EBD) helps to optimize braking power based on weight distribution inside the vehicle. In addition, Brake Assist is engineered to help improve braking performance by applying full brake pressure when a panic stop is detected.

Tire Pressure Monitoring System (TPMS)

To promote enhanced safety and fuel efficiency, the Tire Pressure Monitoring System² continually checks the air pressure in each tire. If pressure drops in any tire, the driver receives a dashboard alert.

Vehicle Stability Assist (VSA®) with Traction Control

Vehicle Stability Assist¹ is designed to sense and help correct oversteer and understeer scenarios to enhance handling and cornering stability, while Traction Control is designed to minimize wheel spin when accelerating on loose or slippery surfaces, helping to inspire greater driver confidence.

Hill Start Assist¹

If you take your foot off the brake when stopped on an incline, this feature is engineered to temporarily maintain brake pressure to help prevent your CR-V from starting to roll backwards.

Auto high beam

The available auto high beam feature automatically changes the low beam headlights to high beam headlights in certain circumstances to help improve your vision.

1. None of the features we describe are intended to replace the driver's responsibility to exercise due care while driving. Drivers should not use handheld devices or operate certain vehicle features unless it is safe and legal to do so. Some features have technological limitations. For additional feature information, limitations and restrictions, please visit www.honda.ca/disclaimers and refer to the vehicle's Owner's Manual.
2. For optimal tire wear and performance, the pressure should be checked regularly with a tire gauge. Do not rely solely on the monitor system.
3. Only compatible with certain devices and operating systems. Operation may be dependent upon: 1. GPS satellite signal reception and available cellular data and/or voice connection; or 2. connection to vehicle's built-in Wi-Fi hotspot, if applicable. Associated charges (incl. data plans, roaming charges or other amounts charged by your wireless carrier) may apply.
4. Operation requires wireless mobile phone to be paired with the vehicle. Operation is dependent upon cellular data and/or voice connection availability and GPS satellite signal reception.



Make it your Honda.

With countless customizable accessories and configurations, let the CR-V show off what you're all about.



This season's must-have accessories.

Front fender garnish



Roof rack rails and crossbars



Rear bumper protector



Trailer hitch



18" Enkei SVX wheel - Gun metal



Body side moulding



Running boards



Tailgate kick sensor*



Exhaust pipe finish



Other Accessories Available

- Door visors
- Hood edge deflector
- Rear back-up sensors
- Rear panel lining cover
- Roof basket

See more accessories at honda.ca

*Accessory available on EX-L trim only. Accessories and packages are subject to inventory availability.

Personalize your personal space.

Cargo tray



Interior panel



Heated steering wheel



Door sill trim, illuminated



Cargo liner



Cargo organizer



Rear seat cover



Ambient lighting



All-season floor mats, high wall



Other Accessories Available

- Cargo cover
- Cargo net
- OptiMATE 12V battery charger/maintainer

See more accessories at honda.ca

Accessories and packages are subject to inventory availability.

Colour & Trim

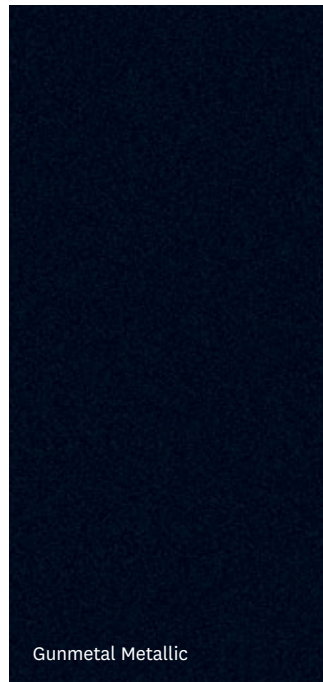
When it comes to your Honda, we keep the options wide open. From the impressive range of exterior colours to the refined leather or fabric interior options, achieving the perfect balance for your Honda is easier than ever.

CR-V	LX	EX	EX-L	TOURING
Crystal Black Pearl	Black Fabric	Black Fabric	Black Leather	Black Leather
Gunmetal Metallic		Black Fabric	Black Leather	Black Leather
Lunar Silver Metallic	Black Fabric*	Black Fabric	Black Leather	Black Leather
Modern Steel Metallic	Black Fabric	Black Fabric	Black Leather	Black Leather
Molten Lava Pearl		Black Fabric	Black Leather	Black Leather
Obsidian Blue Pearl		Black Fabric	Black Leather	Black Leather
Platinum White Pearl	Black Fabric	Black Fabric	Black Leather	Black or Ivory Leather

*Real Time AWD™ model only.



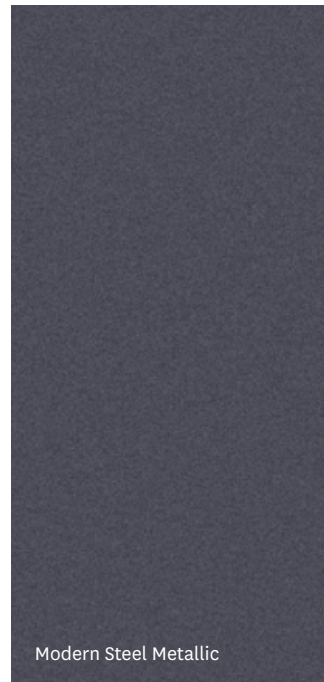
Crystal Black Pearl



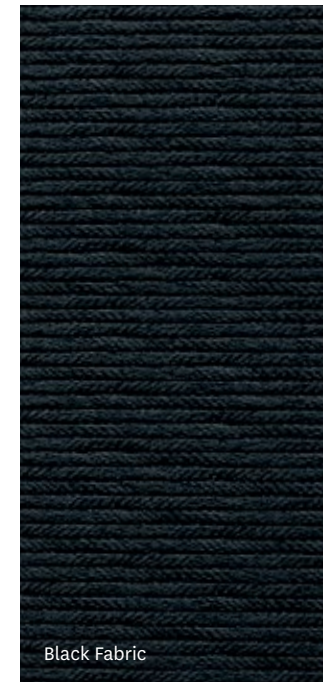
Gunmetal Metallic



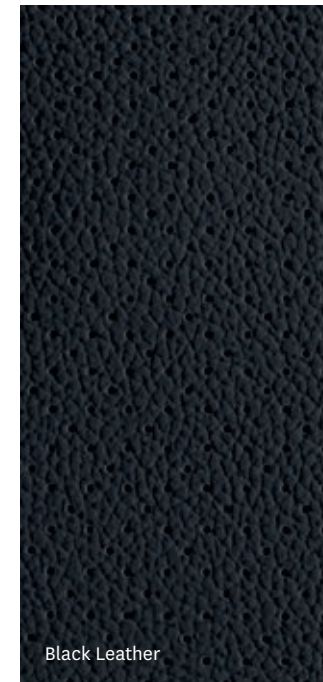
Lunar Silver Metallic



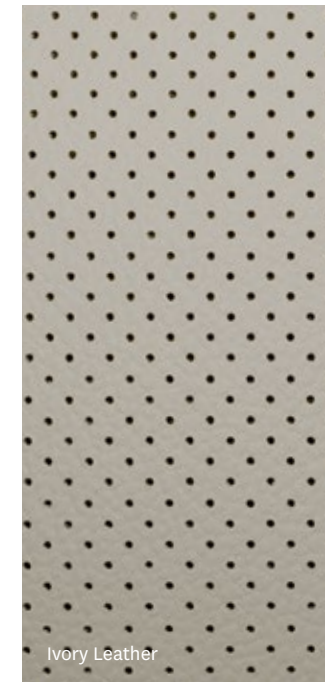
Modern Steel Metallic



Black Fabric



Black Leather



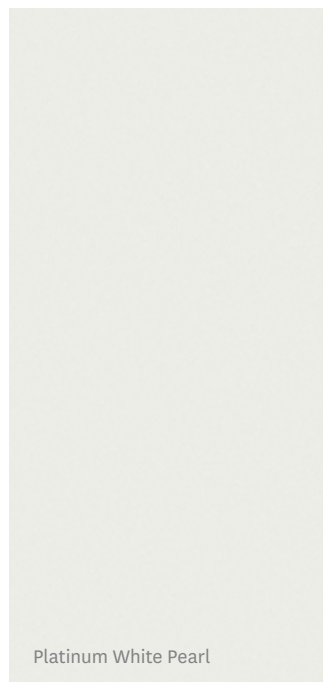
Ivory Leather



Molten Lava Pearl



Obsidian Blue Pearl



Platinum White Pearl

Trims

LX 2WD

- KEY FEATURES:**
- 190 horsepower¹ 1.5 litre, 16-valve, Direct Injection, DOHC, turbocharged 4-cylinder engine
 - 160-watt AM/FM audio system with MP3/Windows Media® Audio playback capability and 4 speakers
 - 17" aluminum-alloy wheels
 - Adjustable cargo floor height
 - Apple Car Play™^{2,3}/Android Auto™^{2,3}
 - Continuously variable transmission (CVT)
 - 7-inch Display Audio System² with HondaLink™^{2,3} Next Generation
 - Easy fold-down 60/40 split rear seatback
 - ECON mode button
 - Front wiper de-icer
 - HandsFreeLink™-bilingual Bluetooth® wireless mobile phone interface^{2,3}
 - Heated front seats
 - Hill Start Assist²
 - HondaLink™ Assist Automatic Emergency Response System^{2,3,4}
 - i-SRS airbag system (front)
 - LED daytime running lights
 - Multi-angle rearview camera² with dynamic guidelines
 - Projector-beam halogen headlights with auto on/off
 - Proximity key entry system with pushbutton start
 - Rear privacy-tinted glass
 - Remote engine start
 - Two ports: 1.0 & 1.5-amp front USB charging ports²
 - 4-wheel Anti-lock Braking System² (ABS)
 - Electronic Parking Brake (EPB) with automatic brake hold
 - Electronic Brake-force Distribution (EBD)
 - Vehicle Stability Assist² (VSA®) with Traction Control

LX

- ADDS TO OR REPLACES LX 2WD FEATURES:**
- Auto high beam
 - Real Time AWD™ with Intelligent Control System™
 - Honda Sensing™ Technologies

EX

- ADDS TO OR REPLACES LX FEATURES:**
- 180-watt AM/FM audio system with MP3/Windows Media® Audio playback capability and 6 speakers
 - 18" aluminum-alloy wheels
 - Body-coloured heated power door mirrors with integrated turn signal indicators
 - Driver's seat with 12-way power adjustment including power lumbar support
 - Fog lights
 - Front passenger's seatback pocket
 - HomeLink® remote system⁵
 - Honda LaneWatch™ blind spot display²
 - One-touch power moonroof with tilt feature
 - Retractable cargo cover
 - Two ports: 2.5-amp USB charging ports in 2nd row²
 - Variable intermittent windshield wipers

EX-L

- ADDS TO OR REPLACES EX FEATURES:**
- 180-watt AM/FM audio system with MP3/Windows Media® Audio playback capability and 8 speakers
 - Auto-dimming rearview mirror
 - Driver's seat position memory
 - Heated leather-wrapped steering wheel
 - Heated rear seats (outboard positions only)
 - Perforated leather-trimmed seating surfaces
 - Power tailgate with programmable height
 - SiriusXM™^{2,6}

TOURING

- ADDS TO OR REPLACES TOURING EX-L FEATURES:**
- 7-inch Display Audio System² with Honda Satellite-Linked Navigation System™^{2,7} and bilingual Voice Recognition
 - 331-watt AM/FM Premium audio system with MP3/Windows Media® Audio playback capability and 9 speakers including subwoofer
 - Ambient lighting (front door handles)
 - Blind Spot Information (BSI) system² with Rear Cross Traffic Monitor system
 - Dual exhaust with chrome finisher
 - Hands-free access power tailgate with programmable height
 - HD Radio™⁸
 - LED headlights (High and low beam) with auto on/off
 - Panoramic moonroof
 - Rain-sensing windshield wipers
 - Roof rails

HONDA SENSING™ TECHNOLOGIES

- STANDARD ON LX WITH REAL TIME AWD,™ EX, EX-L AND TOURING:**
- Collision Mitigation Braking System™² (CMBS®)
 - Forward Collision Warning² (FCW) system
 - Lane Departure Warning (LDW) system²
 - Road Departure Mitigation (RDM™) system²
 - Adaptive Cruise Control² (ACC) with Low-Speed Follow (LSF)
 - Lane Keeping Assist System² (LKAS)

ENGINE	LX	EX	EX-L	TOURING
1.5-litre, 16-valve, Direct Injection, DOHC, turbocharged 4-cylinder	•	•	•	•
Horsepower @ rpm ¹	190 @ 5600	190 @ 5600	190 @ 5600	190 @ 5600
Torque (lb.-ft. @ rpm) ¹	179 @ 2000-5000	179 @ 2000-5000	179 @ 2000-5000	179 @ 2000-5000
Displacement (cc)	1498	1498	1498	1498
Emissions rating	Tier 3 Bin 70	Tier 3 Bin 70	Tier 3 Bin 70	Tier 3 Bin 70
Bore and stroke (mm)	73 x 89.5	73 x 89.5	73 x 89.5	73 x 89.5
Compression ratio	10.3:1	10.3:1	10.3:1	10.3:1
Eco Assist™ system	•	•	•	•
Recommended fuel	Regular	Regular	Regular	Regular

DRIVETRAIN	LX	EX	EX-L	TOURING
Continuously variable transmission (CVT)	•	•	•	•
Drive-by-Wire Throttle System™	•	•	•	•
Front-wheel drive (FWD)	•	•	•	•
ECON mode button	•	•	•	•
Real Time AWD™ with Intelligent Control System™	Available	•	•	•
Towing capacity ² (kg)	Available 680	Available 680	Available 680	Available 680

CHASSIS	LX	EX	EX-L	TOURING
17" aluminum-alloy wheels	•	•	•	•
18" aluminum-alloy wheels	•	•	•	•
All-season tires	P235/65 R17 104H	P235/60 R18 103H	P235/60 R18 103H	P235/60 R18 103H
Capless fueling system	•	•	•	•
Compact spare tire	•	•	•	•
Electronic Parking Brake (EPB) with automatic brake hold	•	•	•	•
MacPherson strut front suspension	•	•	•	•
Motion-Adaptive Electric Power-Assisted Rack-and-Pinion Steering (EPS)	•	•	•	•
Multi-link rear suspension	•	•	•	•
Stabilizer bars – front/rear (mm)	23/17.7 (FWD) 23/13 (Real Time AWD™)	23/13	23/13	23/13
Steering wheel turns, lock-to-lock	2.3	2.3	2.3	2.3
Power-assisted, ventilated front disc/solid rear disc brakes	•	•	•	•

ACTIVE SAFETY	LX	EX	EX-L	TOURING
4-wheel Anti-lock Braking System ³ (ABS)	•	•	•	•
Brake Assist	•	•	•	•
Auto high beam	Real Time AWD™ model	•	•	•
Collision Mitigation Braking System™ (CMBS®) ³ (HS*)	Real Time AWD™ model	•	•	•
Forward Collision Warning (FCW) system ³ (HS*)	Real Time AWD™ model	•	•	•
Lane Departure Warning (LDW) system ³ (HS*)	Real Time AWD™ model	•	•	•
Electronic Brake-force Distribution (EBD)	•	•	•	•
Hill Start Assist ³	•	•	•	•
LED daytime running lights	•	•	•	•
Tire Pressure Monitoring System ⁴ (TPMS)	•	•	•	•
Road Departure Mitigation (RDM) system ³ (HS*)	Real Time AWD™ model	•	•	•
Vehicle Stability Assist ³ (VSA®) with Traction Control	•	•	•	•

HS* = Feature is a component of the Honda Sensing™ suite of safety and driver assist features. These features are standard on AWD models.

PASSIVE SAFETY	LX	EX	EX-L	TOURING
3-point rear seat belts	•	•	•	•
3-point height-adjustable seat belts with front automatic tensioning system	•	•	•	•
Childproof rear door locks	•	•	•	•
i-SRS airbag system (front)	•	•	•	•
HondaLink™ Assist Automatic Emergency Response System ^{3,5,6}	•	•	•	•
Lower Anchors and Tethers for Children (LATCH)	3	3	3	3
Next-Generation Advanced Compatibility Engineering™ (ACE™) body structure	•	•	•	•
SmartVent™ side airbags	•	•	•	•
Side curtain airbags with rollover sensor system	•	•	•	•

DRIVER ASSIST TECHNOLOGY	LX	EX	EX-L	TOURING
Adaptive Cruise Control ³ (ACC) with Low-Speed Follow (HS*)	Real Time AWD™ model	•	•	•
Blind Spot Information (BSI) system ³ with Rear Cross Traffic Monitor ³ system	•	•	•	•
Honda LaneWatch™ blind spot display ³	•	•	•	•
Lane Keeping Assist System ³ (LKAS) (HS*)	Real Time AWD™ model	•	•	•

HS* = Feature is a component of the Honda Sensing™ suite of safety and driver assist features. These features are standard on AWD models.

1. Horsepower and torque calculations reflect SAE net, Rev. 08/04, SAE J1349 procedures.
 2. None of the features we describe are intended to replace the driver's responsibility to exercise due care while driving. Drivers should not use handheld devices or operate certain vehicle features unless it is safe and legal to do so. Some features have technological limitations. For additional feature information, limitations and restrictions, please visit www.honda.ca/disclaimers and refer to the vehicle's Owner's Manual.
 3. Only compatible with certain devices and operating systems. Operation may be dependent upon: 1. GPS satellite signal reception and available cellular data and/or voice connection; or 2. connection to vehicle's built-in Wi-Fi hotspot, if applicable. Associated charges (incl. data plans, roaming charges or other amounts charged by your wireless carrier) may apply.
 4. Operation requires wireless mobile phone to be paired with the vehicle. Operation is dependent upon cellular data and/or voice connection availability and GPS satellite signal reception.
 5. HomeLink® can be programmed with codes of up to three remote-control devices (e.g., garage-door opener, home security system, etc.).
 6. Only available in certain areas. Includes a no-charge trial of three months.
 7. Map database covers major metropolitan areas in Canada and 48 contiguous U.S. states.
 8. Coverage varies by market.

EXTERIOR	LX	EX	EX-L	TOURING
Active shutter grill	•	•	•	•
Body-coloured door handles	•	•	•	•
Fog lights		•	•	•
Front and rear splash guards	•	•	•	•
Front wiper de-icer	•	•	•	•
Body-coloured heated power door mirrors	•	With integrated turn signal indicators	With integrated turn signal indicators	With integrated turn signal indicators
Folding door mirrors	•	•	•	•
Intermittent rear window wiper/washer	•	•	•	•
Intermittent windshield wipers	•			
Variable intermittent windshield wipers		•	•	•
Projector-beam halogen headlights	With auto-on/off	With auto-on/off	With auto-on/off	
LED headlights (High and low beam)				With auto-on/off
One-touch power moonroof with tilt feature		•	•	
Panoramic moonroof				•
Power tailgate with programmable height			•	Hands-free access
Rain-sensing windshield wipers				•
Rear privacy-tinted glass	•	•	•	•
Rear window defroster	•	•	•	•
Roof rails				•
Dual exhaust with chrome finisher				•
COMFORT & CONVENIENCE	LX	EX	EX-L	TOURING
12-volt power outlets (Front: 2; cargo area: 1)	•	•	•	•
7-inch Display Audio System ³ with Honda Satellite-Linked Navigation System ^{TM3,7} and bilingual Voice Recognition				•
Adjustable cargo floor height (2 levels)	•	•	•	•
Ambient lighting (front door handles)				•
Auto-dimming rearview mirror			•	•
Beverage holders, front and rear	•	•	•	•
Cargo area tie-down anchors (4)	•	•	•	•
Centre console	•	•	•	•
Colour TFT centre meter display with Driver Information Interface	•	•	•	•
Conversation mirror with sunglasses holder	•	•	•	•
Door-pocket storage bins	•	•	•	•
Driver attention monitor ³	•	•	•	•
Driver's and front passenger's vanity mirrors	•	Illuminated	Illuminated	Illuminated
Dual-zone automatic climate control with air-filtration system	•	•	•	•
Exterior temperature indicator	•	•	•	•
Front passenger's seatback pocket		•	•	•
HandsFreeLink™-bilingual Bluetooth® wireless mobile phone interface ^{3,5}	•	•	•	•
HomeLink® remote system ⁸		•	•	•
Immobilizer theft-deterrent system	•	•	•	•
Maintenance Minder™ system	•	•	•	•
Map lights	•	•	•	•
Multi-angle rearview camera ³ with dynamic guidelines	•	•	•	•
One-touch turn signals	•	•	•	•
Power door locks	•	•	•	•
Power windows with auto-up/down driver's window	•	•	•	•
Proximity key entry system with pushbutton start	•	•	•	•
Rear air vents	•	•	•	•
Rear-seat centre armrest with cupholders	•	•	•	•
Rear-seat heater ducts	•	•	•	•
Remote engine start	•	•	•	•
Retractable cargo cover		•	•	•
Security system	•	•	•	•
Steering wheel-mounted controls (cruise control, audio, telephone and Multi-Information Display)	•	•	•	•
Tilt and telescoping steering column	•	•	•	•
Walk-away door lock	•	•	•	•
SEATING & TRIM	LX	EX	EX-L	TOURING
Driver's seat position memory			•	•
Driver's seat with 6-way manual adjustment (including height adjustment)	•			
Driver's seat with 12-way power adjustment including 4-way power lumbar support		•	•	•
Front passenger's seat with 4-way manual adjustment	•	•		
Front passenger's seat with 4-way power adjustment			•	•
Easy fold-down 60/40 split rear seatback	•	•	•	•
Floor mats	•	•	•	•
Heated front seats	•	•	•	•
Heated rear seats (outboard positions only)		•	•	•
Heated leather-wrapped steering wheel			•	•
Instrument panel trim finish	High-bright silver	Woodgrain	Woodgrain	Woodgrain
Perforated leather-trimmed seating surfaces			•	•
Leather-wrapped shift knob			•	•
Seating capacity	5	5	5	5

ENTERTAINMENT	LX	EX	EX-L	TOURING
160-watt AM/FM audio system with MP3/Windows Media® Audio playback capability and 4 speakers	•			
180-watt AM/FM audio system with MP3/Windows Media® Audio playback capability and 6 speakers		•		
180-watt AM/FM audio system with MP3/Windows Media® Audio playback capability and 8 speakers			•	
331-watt AM/FM Premium audio system with MP3/Windows Media® Audio playback capability and 9 speakers including subwoofer				•
7-inch Display Audio System ³ with HondaLink™ ^{3,5} Next Generation	•	•	•	Including Navigation ^{3,7}
Bluetooth® Streaming Audio ^{3,5}	•	•	•	•
Apple CarPlay™ ^{3,5} /Android Auto™ ^{3,5}	•	•	•	•
HD Radio™ ⁹				•
Siri Eyes Free compatibility ^{3,5}	•	•	•	•
Speed-sensitive Volume Control (SVC)	•	•	•	•
Front USB charge/data port(s) ⁵	2 ports; 1.0 & 1.5 amp	2 ports; 1.0 & 1.5 amp	2 ports; 1.0 & 1.5 amp	2 ports; 1.0 & 1.5 amp
Rear USB ports ⁵		2 ports; 2.5-amp charging ports	2 ports; 2.5-amp charging ports	2 ports; 2.5-amp charging ports
SiriusXM™ ^{3,10}			•	•
Wi-Fi tethering ⁵	•	•	•	•
FUEL ECONOMY ¹¹ (L/100 KM)	LX	EX	EX-L	TOURING
Front-wheel drive (City/Hwy/Combined)	8.4/7.0/7.8	NA	NA	NA
Real Time AWD™ (City/Hwy/Combined)	8.7/7.2/8.0	8.7/7.2/8.0	8.7/7.2/8.0	8.7/7.2/8.0
DIMENSIONS	LX	EX	EX-L	TOURING
Cargo volume; rear seats up/down – (L)	1110/2146	1110/2146	1110/2146	1065/2146
Curb weight – FWD/Real Time AWD™ (kg)	1502/1557	NA/1580	NA/1589	NA/1617
Fuel tank capacity (L)	53	53	53	53
Gross vehicle weight rating (kg)	2130	2130	2130	2130
Ground clearance – FWD/Real Time AWD™ (mm)	198/208	NA/208	NA/208	NA/208
Headroom – front/rear (mm)	1018/996	964/994	964/994	961/974
Height (with antenna) – FWD//Real Time AWD™ (mm)	1679/1689	NA/1689	NA/1689	NA/1689
Hip room – front/rear (mm)	1400/1257	1400/1257	1400/1257	1400/1257
Legroom – front/rear (mm)	1050/1025	1050/1025	1050/1025	1050/1025
Length (mm)	4586	4586	4586	4586
Passenger volume (L)	2999	2914	2914	2877
Shoulder room – front/rear (mm)	1470/1412	1470/1412	1470/1412	1470/1412
Track – front/rear – FWD (mm)	1601/1617	NA	NA	NA
Track – front/rear – Real Time AWD™ (mm)	1598/1613	1598/1613	1598/1613	1598/1613
Turning radius – FWD/Real Time AWD™ (m)	5.7/5.7	NA/5.7	NA/5.7	NA/5.7
Wheelbase (mm)	2660	2660	2660	2660
Width – including mirrors/mirrors folded (mm)	2065/1849	2107/1951	2107/1951	2107/1951

1. Horsepower and torque calculations reflect SAE net, Rev. 08/04, SAE J1349 procedures.
2. With the required accessory towing package. See your Owner's Manual for proper towing operation.
3. None of the features we describe are intended to replace the driver's responsibility to exercise due care while driving. Drivers should not use handheld devices or operate certain vehicle features unless it is safe and legal to do so. Some features have technological limitations. For additional feature information, limitations and restrictions, please visit www.honda.ca/disclaimers and refer to the vehicle's Owner's Manual.
4. For optimal tire wear and performance, the pressure should be checked regularly with a tire gauge. Do not rely solely on the monitor system.
5. Only compatible with certain devices and operating systems. Operation may be dependent upon: 1. GPS satellite signal reception and available cellular data and/or voice connection; or 2. connection to vehicle's built-in Wi-Fi hotspot, if applicable. Associated charges (incl. data plans, roaming charges or other amounts charged by your wireless carrier) may apply.
6. Operation requires wireless mobile phone to be paired with the vehicle. Operation is dependent upon cellular data and/or voice connection availability and GPS satellite signal reception.
7. Map database covers major metropolitan areas in Canada and the 48 contiguous U.S. states.
8. HomeLink® can be programmed with codes of up to three remote-control devices (e.g., garage-door opener, home security system, etc.).
9. Coverage varies by market.
10. Only available in certain areas. Includes a no-charge trial of three months.
11. Estimated fuel consumption based on Government of Canada's 5-cycle testing method. Your actual fuel consumption will vary based on driving habits and other factors – use for comparison only.
For more information on 5-cycle testing, visit <http://vehicles.nrcan.gc.ca>

We're Here. At Honda, assistance and support are always available. The team of trained technicians at your Honda dealership will help keep your vehicle in terrific shape. If you need more information or assistance relating to your warranty, call us at 1-888-9-HONDA-9. For all of the latest Honda information, including product specifications, pricing, photos and more, visit honda.ca. It has everything you need to “design” your Honda and personalize it with items from a list of quality accessories.

We're Ready to Help. When you purchase a new Honda, you automatically receive Honda Plus Roadside Assistance. This service is available to you, or any authorized driver, 24 hours a day, 7 days a week, anywhere in Canada or the United States (including the lower 48 states, the District of Columbia, Alaska, Hawaii, and Puerto Rico). Coverage is for 3 years over an unlimited distance and includes a 24-hour toll-free Honda Plus Roadside Assistance number, mechanical breakdown towing, emergency roadside service and many other helpful features. Ask your dealer for more information.

Honda Plus Extended Warranty. Experience added protection with Honda Plus coverage that is behind you for the road ahead. With available coverage options of up to 8 years/200,000 km, you can choose the one that best suits your needs. With a plan this wide-ranging, the only thing that's uncertain is where it will take you.

Honda Financial Services. Whether you buy or lease a Honda, Honda Financial Services can assist you with the process. Ask your dealer which lease or purchase plan best suits your needs.

New Honda Vehicle Warranty. The Honda warranty protection makes Power Train components a minor concern with the Honda 5-year/100,000-km No Nonsense Warranty. In addition to the Honda 5-year/100,000-km No Nonsense Warranty, you and your new Honda are protected by a Honda 3-year/60,000-km Distributor's Warranty as well as an additional series of warranties for such items as emission controls, body corrosion and more.

Genuine Honda Accessories give you the opportunity to fine-tune your new Honda just how you like it. Whether you want to turn up the style, the versatility or the exclusivity, every accessory is designed and built to adhere to the strictest Honda standards. See your dealer for full details.

Genuine Honda Replacement Parts are made to the same exacting standards as original Honda components and are guaranteed by the Genuine Honda Parts Warranty. Using Genuine Honda Parts will help to maintain the quality, reliability and performance of your vehicle.

Always use seat belts and appropriate child seats. Children 12 and under are safest when properly restrained in a rear seat. Properly secure all items stored in cargo areas. Always read the vehicle owner's manual for detailed vehicle operation and feature information.

Honda reserves the right to terminate or change any of the services and/or features listed in this brochure at any time, for any reason. Some features require registration. Certain features may transmit to Honda and/or other service providers a vehicle's location, operating conditions or other information that may be tied to the vehicle identification number (VIN) and can be combined to track a vehicle. For Honda's data use and Privacy Policies, see www.honda.ca/privacy. Specifications, features, illustrations and equipment shown in this brochure are based upon the latest available information at the time of publication. Although descriptions are believed to be correct, accuracy cannot be guaranteed. Honda reserves the right to make changes at any time, without notice or obligation, in colours, specifications, accessories, materials, models and trim availability. Some vehicles may be shown with optional equipment. Some vehicles shown may be U.S. models. Canadian specifications may vary. For Android Auto™ data use and privacy policy, see Terms and Privacy Policy for Android Auto™ app or contact Google Inc. at www.google.com. Android Auto is a trademark of Google Inc. For Apple CarPlay™ data use and privacy policy, see Terms and Privacy Policy for Apple CarPlay™ or contact Apple Inc. at www.apple.com. Apple CarPlay, Siri and iPhone are trademarks of Apple Inc., registered in the U.S. and other countries. Bluetooth is a registered trademark of SIG Inc. Blu-ray is a trademark of Blu-ray Disc Association. HomeLink and HandsFreeLink are registered trademarks or trademarks of Johnson Controls Technology. HD Radio™ is a proprietary trademark of iBiquity Digital Corp. HDMI is a registered trademark of HDMI Licensing LLC. Windows Media is a registered trademark of Microsoft Corporation. LEED® is a registered trademark of the U.S. Green Building Council, licensed to the Canada Green Building Council for use in Canada. © 2018 SiriusXM Canada Inc. "SiriusXM", the SiriusXM logo, channel names and logos are trademarks of SiriusXM Radio Inc. and are used under licence. Honda and all other marks used herein are trademarks or registered trademarks of Honda Motor Co., Ltd. Honda Canada Inc., 180 Honda Boulevard, Markham, ON, Canada L6C 0H9. 1-888-9-HONDA-9. www.honda.ca.



Accessorized model shown.

Here's to the dreamers.

The Power of Dreams

At Honda, The Power of Dreams drives us to create intelligent products that enhance mobility and increase the joy in people's lives. It is the mindset that guides us to help move people forward and protect the future we all share.

How do we do it? We never stop dreaming. In the 70s, we were the first automaker in the industry to voluntarily adhere to emissions standards. Now, we're advancing robotics and aviation, harnessing solar power and releasing a car that emits only water.

Through it all, our goal never changes: create a safer, smarter world in which people experience the joy of mobility.

The Honda Canada Foundation

The Honda Canada Foundation enables the realization of dreams by supporting people and organizations across the country that focus on four pillars: Family, Education, Environment and Engineering. Since 2005, more than 5.5 million Canadians have benefited from charitable programs funded by the Honda Canada Foundation.

Blue Skies for Our Children

We believe everything we do must exist in harmony with nature. That's where "Blue Skies for Our Children" was born. It's more than a mantra – it's an environmental pledge to the Earth and our future generations. And we're practicing what we preach.

Leading the LEED® certifications

Our sales offices also strive for environmental efficiencies. Honda's LEED® (Leadership in Energy and Environmental Design) Gold Certified Head Office campus in Markham, Ontario, includes green features such as a storm water management system, heat-reflective materials

on the roof and bio swales for natural filtration. The facility uses 89 percent less litres of water per square foot and 38 percent less kilowatt hours of energy annually than the average office facility.

Zero Waste-to-Landfill

We don't waste time. Or anything else for that matter. Our goal is to increase our recycling efforts, reduce overall waste and divert materials from landfill sites. In fact, last year we sent less than one percent of waste to landfills from our office and parts distribution facilities combined.

One Honda. One Tree.

We're pretty obsessed with fresh air. For every lawn and garden or ATV product sold between April 1 and July 31 annually, the Honda Canada Foundation plants one tree. In the last 12 years, we've helped plant more than 160,000 trees in Canada.

Environmental Vehicles & Technology

Blending style, efficiency and a serious amount of thrill, the Accord Hybrid makes environmental responsibility feel almost rebellious. Combining a lithium-ion battery with a 2.0-litre engine, this Hybrid lets you go more and stop less on the way. The Honda Insight exemplifies hybrid efficiency, powered by a 1.5-litre Atkinson Cycle engine, electric motor and lithium-ion battery. And the future looks brighter with Honda advancing Fuel Cell technology that emits zero emissions.

Honda Clarity Plug-in Hybrid

Whoever said an eco-conscience came with compromise was sorely mistaken. This advanced plug-in hybrid vehicle lets you tap into electric power alongside the gas engine to create extra efficiency.

For more information, visit hondacanada.ca



HondaJet



Motorcycles



Side By Side



ASIMO



Honda Campus



Marine



Power Equipment



ATVs



Blue Skies for Our Children

