



CAUTION - CAPABLE OF FIRING
WITH MAGAZINE REMOVED

Smith & Wesson
SW1511





Smith & Wesson®

For sport, recreation, protection and professional use, you can feel confident standing behind 167 years of reliability and accuracy. Throughout the years, the firearms have developed, but the promise remains unchanged. Since 1852, Smith & Wesson® has been providing enthusiasts with firearms they can count on – when only the best will do.

SW22 VICTORY® PISTOLS

AVAILABLE FEATURES



STANDARD PISTOLS

5.5" BARREL

- 22 LR
- 10 Round Magazine
- Blowback System
- Matte Silver Finish
- Polymer Textured Grips
- Fiber Optic Front Sight
- Adjustable Rear Sight with Fiber Optic Inserts
- Match Grade Stainless Steel Barrel
- Trigger with Adjustable Trigger Stop
- Picatinny-Style Rail
- Threaded Barrel



108490



10201



10297

TARGET PISTOL

5.5" BARREL

- 22 LR
- 10 Round Magazine
- Blowback System
- Matte Silver Finish
- Polymer, Textured, Finger Rest Grips
- Black Blade Front Target Sight
- Adjustable Square Notch Blade Rear Target Sight
- Beveled Magazine Well
- Match Grade Stainless Steel Bull Barrel
- Trigger with Adjustable Trigger Stop
- Custom Polished Feed Ramp
- Picatinny-Style Rail



11536

SW22 VICTORY® PISTOLS

The SW22 VICTORY® pistol is constructed on a single-action, enclosed hammer-fired, blowback semi-automatic design. Chambered in .22 LR, the SW22 VICTORY® pistol comes highly featured with innovative design qualities that include a match-grade, interchangeable barrel for superb accuracy on the range or in the field along with a simple one-screw takedown design.

The high-end features, modern styling, and enriched functionality place SW22 VICTORY® pistols in a category of their own, with an affordable price to match.

Not all features available in all configurations. See the corresponding section charts for individual SKU features on page 60.



Fiber Optic Front Sight



Adjustable Rear Sight with Fiber Optic Inserts



Black Blade Front Target Sight



Trigger with Adjustable Trigger Stop



SW22 VICTORY® PISTOLS

FEATURES & BENEFITS

- Adjustable trigger stop to limit overtravel
- Steel reinforced polymer thumb safety for more durability
- Stainless steel blow-back system allows the user to stay on target easier
- Modular design and easy, one-screw take down

2
Includes 2 Magazines



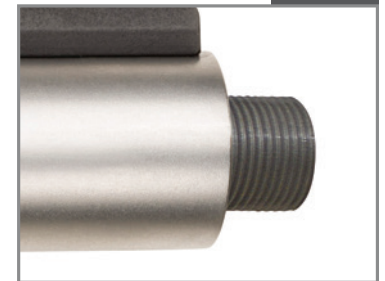
Polymer, Textured
Finger Rest Grip



Custom Polished Feed Ramp



Adjustable Square Notch Blade
Rear Target Sight



Threaded Barrel- 1/2-28

SW1911 E-SERIES™ PISTOLS

AVAILABLE FEATURES



4.25" Barrel

4.25" BARREL

- Black Finish
- Two-Tone Finish
- 8 & 7 Round Magazines Included
- Scandium Alloy Frame
- Round Butt Frame
- Tritium Night Sights



108483



108485

5.0" Barrel

5.0" BARREL

- Black Finish
- Satin Stainless Finish
- 8 Round Magazines
- Stainless Steel Frame
- Tritium Night Sights
- White Dot Sights
- Tactical Rail



108409



108411



108482

SW1911 E-SERIES™

Precision. Accuracy. Performance. With a remarkable selection of SW1911 pistols, Smith & Wesson® continues its tradition of innovation and its commitment to bringing shooters the finest quality high performance firearms. Smith & Wesson's variations of John Moses Browning's extremely popular 1911 design can be seen in the production, Pro Series®, and Performance Center® line of SW1911 pistols. These 1911 pistols are manufactured with a wide variety of materials, finishes and unique features and are favorites in any collection.

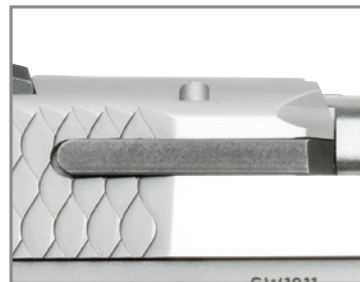
Not all features available in all configurations. See the corresponding section charts for individual SKU features on page 60.



Fish Scale Serrations



Laminate Wood Grips with Aggressive Checkering



Enhanced Extractor



Tactical Accessory Rail



SW1911 E-SERIES™ PISTOLS

FEATURES & BENEFITS

- Scandium-alloy frames for lightweight carry and durability
- Stainless steel frames are highly durable and reduce felt recoil
- Fish scale slide serrations for more tactile grip
- Enhanced extractor for more reliable extraction

2 Includes 2 Magazines



Tritium Night Rear Sight



Tritium Night Front Sight



White Dot Front Sight



White 2-Dot Rear Sight

SD™ & SDVE™ SELF DEFENSE PISTOLS

AVAILABLE FEATURES



9mm

4.0" BARREL

- Black Finish
- Flat Dark Earth Finish
- Gray Finish
- 16 Round Magazines
- 10 Round Magazines
- HI-VIZ® Sights
- White Dot Sights
- Tactile Loaded Chamber Indicator
- CA Compliant Models



40 S&W

4.0" BARREL

- Black Finish
- Flat Dark Earth Finish
- Gray Finish
- 14 Round Magazines
- 10 Round Magazines
- HI-VIZ® Sights
- White Dot Sights
- Tactile Loaded Chamber Indicator
- CA Compliant Models



SD™ & SDVE™ SELF DEFENSE PISTOLS

The Smith & Wesson® SD™ and SDVE™ series of pistols were designed with a single purpose in mind – personal protection. Chambered in 9mm and 40 S&W, the Smith & Wesson® SD™ and SDVE™ semi-automatic pistols offer a variety of features requested by individuals for use at home and for personal defense applications.

Not all features available in all configurations. See the corresponding section charts for individual SKU features on page 60.



Ergonomic, Textured Grip with Aggressive Front and Backstrap Texturing



Deep Slide Serrations for Better Grip



Front White Dot Sight



Rear White 2-Dot Sights



SD™ & SDVE™ SELF DEFENSE PISTOLS

FEATURES & BENEFITS

- Polymer frame for lightweight carry
- Stainless steel slide and barrel for extended life
- Fixed sights for quick target acquisition
- SDT™ - Self Defense Trigger for optimal, consistent pull
- Picatinny-style equipment rail
- Textured finger locator on frame helps keep finger off trigger until ready to fire



HI-VIZ® Front Sight



HI-VIZ® Rear Sight



Tactile Loaded Chamber Indicator
(CA Compliant Models)



Easy Disassembly

S&W® MODEL 41 PISTOLS

AVAILABLE FEATURES



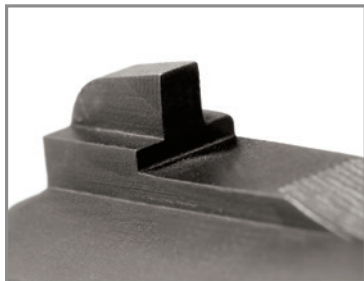
- 5.5" Barrel
- 7.0" Barrel
- Blued Finish
- 10 Rounds
- Single Action Only
- Carbon Steel Frame
- Carbon Steel Barrel
- Carbon Steel Slide
- Undercut Patridge Front Sight
- Micrometer, Click-Adjustable, Target Rear Sight
- Checkered Wood Grips



S&W® MODEL 41 PISTOL

The Smith & Wesson® Model 41 is the top of the line in rimfire pistols. Used by national level competitors for acute precision in competition, the Model 41 is considered one of the best 22LR target pistols ever manufactured.

Not all features available in all configurations. See the corresponding section charts for individual SKU features on page 60.



Undercut Patridge Front Sight



Single Side Slide Stop



Carbon Steel Thumb Safety



Micrometer, Click-Adjustable Target Rear Sight



MODEL 41 PISTOLS

FEATURES & BENEFITS

- Switch-barrel design allows use of both 5.5" and 7.0" barrels on one frame
- Single side slide stop
- Drilled and tapped for mounting optics
- Micrometer click-adjustable target rear sight
- Precision button-rifled barrel
- Crisp target trigger, factory set at 2.75 lbs. to 3.25 lbs.
- User adjustable trigger stop
- Ergonomic, checkered target grips
- Extended magazine well



Precision, Button-Rifled Barrel



User Adjustable Trigger Stop



Ergonomic Checkered Target Grips



Extended Magazine Well

SMALL (J) FRAME REVOLVERS

AVAILABLE FEATURES



22LR and 22 WMR

1.88" OR 3.0" BARREL

- 22 LR
- 22 Magnum
- Black Matte Finish
- Silver Matte Finish
- 7 or 8 Rounds
- Internal Hammer
- External Hammer
- Aluminum Alloy Frame
- Stainless Steel Frame
- HI-VIZ® Sights
- XS™ Sights
- Polymer Grips
- Wood Grips



38 S&W SPECIAL +P

1.88" BARREL

- Black Matte Finish
- Silver Matte Finish
- 5 Rounds
- Internal Hammer
- External Hammer
- Shrouded Hammer
- Aluminum Alloy Frame
- HI-VIZ® Sights
- XS™ Sights
- Integral Sights
- Polymer Grips
- Wood Grips
- Crimson Trace® Lasergrips®
- LadySmith™



357 MAGNUM/ 38 S&W SPECIAL +P

1.88", 2.13" or 3.0" BARREL

- Black Matte Finish
- Silver Matte Finish
- Satin Stainless Finish
- 5 Rounds
- Internal Hammer
- External Hammer
- Shrouded Hammer
- Stainless Steel Frame
- Scandium Alloy Frame
- Titanium Alloy Cylinder
- HI-VIZ® Sights
- XS™ Sights
- Integral Sights
- Black Blade Front Sight
- Red Ramp Front Sight
- Adjustable Sights
- Polymer Grips
- Wood Grips
- Crimson Trace® Lasergrips®
- LadySmith™



Not all features available in all configurations. See the corresponding section charts for individual SKU features on page 61.



External Hammer for Single Action Fire



Internal Hammer for Snag-Free Holstering



Shrouded Hammer for Easy Holstering while allowing for Single Action Fire



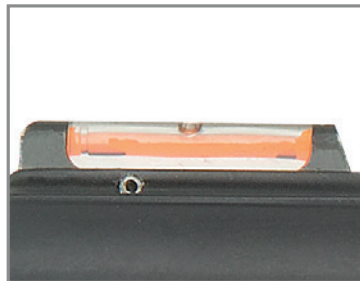
SMALL FRAME REVOLVERS

FEATURES & BENEFITS

- Aluminum alloy frames for lightweight, all-day carry
- Scandium-alloy frames gives the user a high-strength frame to accommodate magnum loads while allowing for lightweight, all-day carry
- Titanium alloy cylinders for lightweight durability
- Stainless steel frames with stainless steel cylinder for high strength and durability
- No internal lock choice available on some models



XS™ Sight Systems Front Sights



HI-VIZ® Front Sights



Adjustable Rear Sights



Crimson Trace® Lasergrips®

MEDIUM (K&L) FRAME REVOLVERS

AVAILABLE FEATURES



K-FRAME MEDIUM

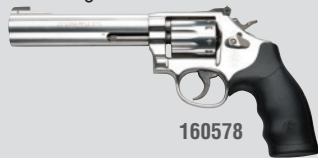
- 22 LR
- 357 Magnum/
38 S&W Special +P
- 2.75" Barrel
- 4.13" Barrel
- 4.25" Barrel
- 6.0" Barrel
- Matte Stainless Finish
- 6 or 10 Rounds
- External Hammer
- Stainless Steel Frame
- Stainless Steel Barrel
- Stainless Steel Cylinder
- Red Ramp Front Sight
- Integral Ramp Front Sight
- Patridge Front Sight
- Adjustable Rear Sight
- Adjustable White Outline Rear Sight
- Integral Rear Sight
- Polymer Grips



10061



160584



160578

L-FRAME MEDIUM

- 357 Magnum/
38 S&W Special +P
- 44 Magnum/ 44 Special
- 2.5" Barrel
- 2.75" Barrel
- 3.0" Barrel
- 4.13" Barrel
- 4.25" Barrel
- 5.0" Barrel
- 6.0" Barrel
- 7.0" Barrel
- Matte Stainless Finish
- 5, 6 or 7 Rounds
- External Hammer
- Stainless Steel Frame
- Stainless Steel Barrel
- Stainless Steel Cylinder
- Red Ramp Front Sight
- Adjustable Rear Sight
- Adjustable White Outline Rear Sight
- Polymer Grips
- Textured Wood Grips
- 3-5-7 Wood Grips



150713



150712



150855

S&W® REVOLVERS

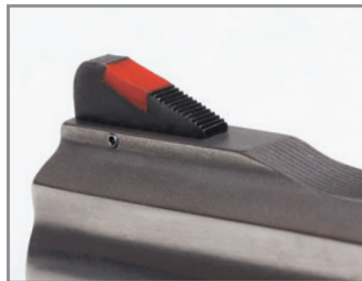
The K-Frame revolver is one of the most important innovations in Smith & Wesson history and was built specifically to handle the .38 S&W Special cartridge. Since its introduction in 1899, the K-Frame revolver has been a favorite for military and police professionals as well as target shooters and enthusiasts. Today's K-Frame revolvers are available in .22 LR, .357 Magnum and .38 S&W Special +P.

Smith & Wesson L-Frame revolvers are built to suit the demands of the most serious firearms enthusiast. Available in five, six and seven shot cylinders, the L-Frame revolver has a strong, durable frame and barrel built for continuous Magnum usage. As police officers and hunters will attest, this firearm is made to withstand heavy use.

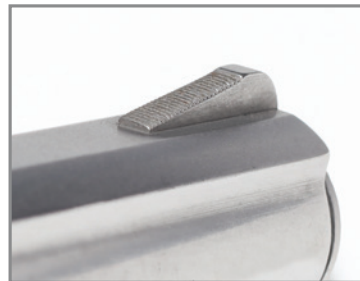
Not all features available in all configurations. See the corresponding section charts for individual SKU features on pages 62-63.



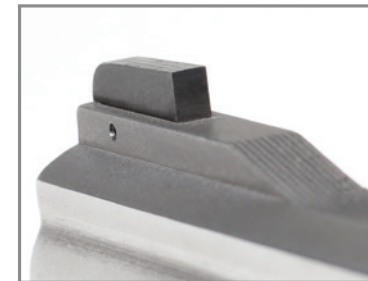
External Hammer for Single and Double Action Fire



Red Ramp Front Sight



Integral Ramp Front Sight



Patridge Front Sight



MEDIUM (K&L) FRAME REVOLVERS



MEDIUM FRAME REVOLVERS

FEATURES & BENEFITS

- Stainless steel construction for high strength and less felt recoil
- Various front and rear sights
- Adjustable white outline rear sights
- Smooth double action and short, crisp single action trigger pull
- 22LR, 38 S&W Special +P, 357 Magnum®, 44 Special, 44 Magnum®



Adjustable White Outline Rear Sight



Adjustable Rear Sight



Textured Wood Grips



3-5-7 Textured Wood Grips

LARGE (N) FRAME REVOLVERS

AVAILABLE FEATURES



44 MAGNUM/44 SPECIAL

- 3.0" Barrel
- 4.13" Barrel
- 5.0" Barrel
- 6.0" Barrel
- 6.5" Barrel
- External Hammer
- Satin Stainless Finish
- Matte Black Finish
- 6 Rounds
- External Hammer
- Stainless Steel Frame
- Scandium Alloy Frame
- Stainless Steel Barrel
- Stainless Steel Cylinder
- Titanium Alloy Cylinder
- Red Ramp Front Sight
- Interchangeable Front Sight
- HI-VIZ® Fiber Optic Front Sight
- Adjustable V-Notch Rear Sight
- Adjustable White Outline Rear Sight
- Polymer Grips
- Textured Wood Grips



45 ACP

- 4.13" Barrel
- Matte Stainless Finish
- 6 Rounds
- External Hammer
- Stainless Steel Frame
- Stainless Steel Barrel
- Stainless Steel Cylinder
- Gold Bead Patridge Front Sight (Interchangeable)
- Adjustable Rear Sight
- Jerry Miculek "JM Lightning Bolt" Wood Grips
- Polymer Black Grips



S&W® LARGE FRAME REVOLVERS

Smith & Wesson's large frame revolvers are a favorite choice among handgun hunters, competitive shooters and revolver enthusiasts. These revolvers are available from production, Classics, Pro Series® and Performance Center® in a variety of chamberings in 357 Magnum, 44 Magnum and 45 ACP. Offered in several different barrel lengths, Smith & Wesson® provides the user plenty of options for a variety of shooting applications.

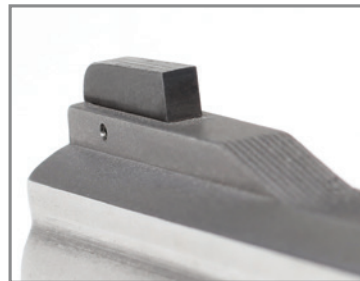
Not all features available in all configurations. See the corresponding section charts for individual SKU features on pages 62-63.



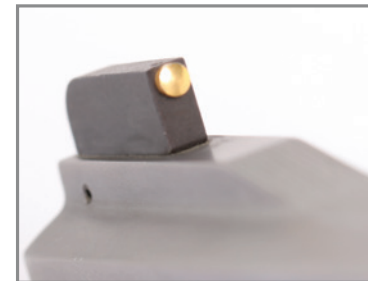
External Hammer for Single and Double Action Fire



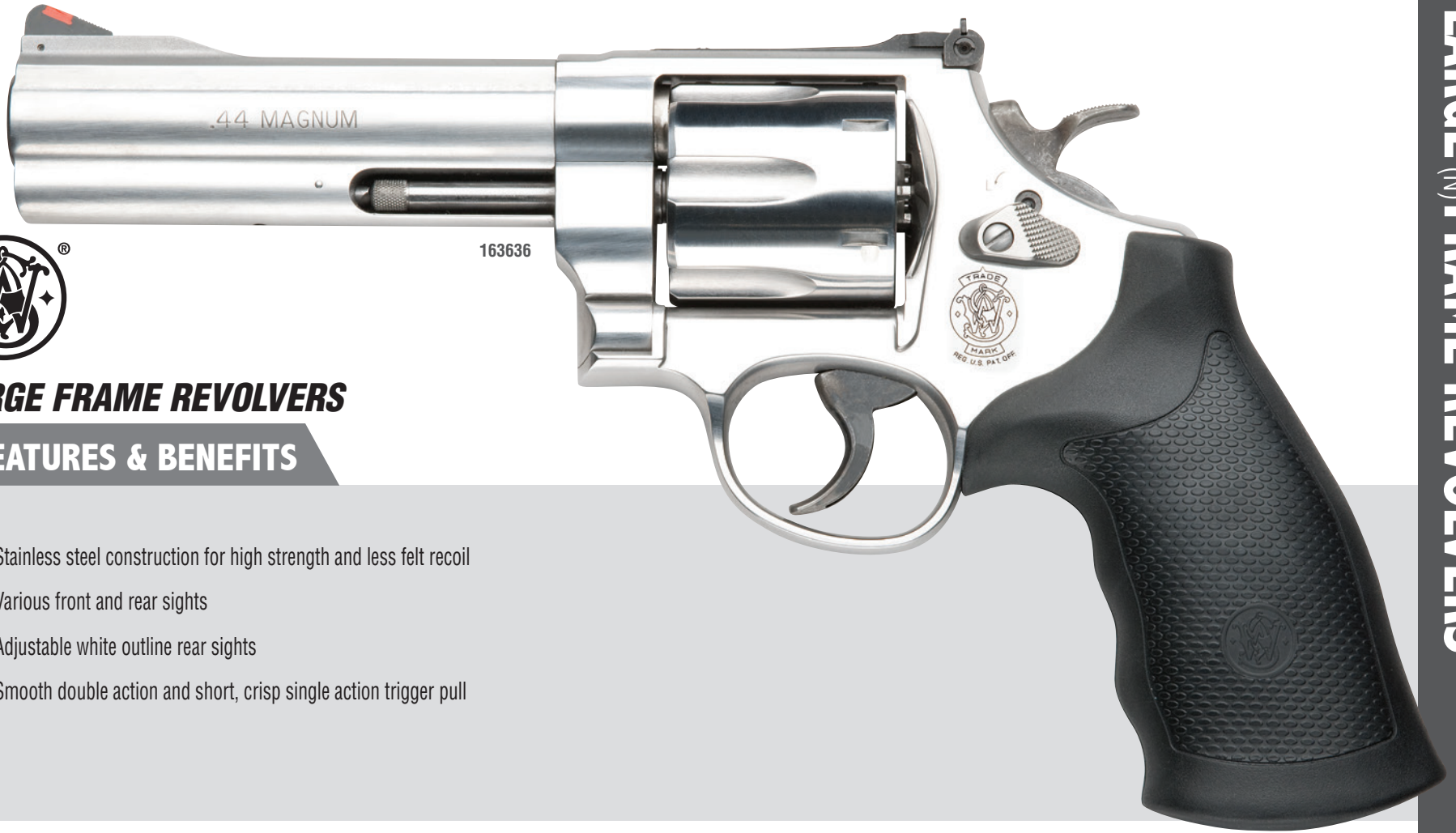
Red Ramp Front Sight



Patridge Front Sight



Gold Bead Patridge Front Sight



LARGE FRAME REVOLVERS

FEATURES & BENEFITS

- Stainless steel construction for high strength and less felt recoil
- Various front and rear sights
- Adjustable white outline rear sights
- Smooth double action and short, crisp single action trigger pull



Adjustable White Outline Rear Sight



Adjustable V-Notch Rear Sight



Textured Wood Grips



Jerry Miculek Signature Grips

X-LARGE^(X) FRAME REVOLVERS

AVAILABLE FEATURES



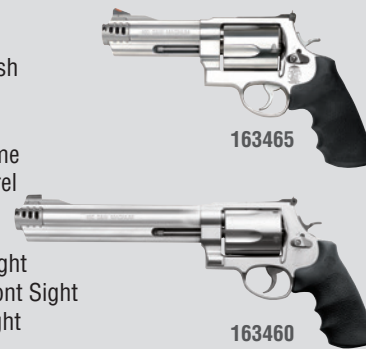
500 S&W MAGNUM

- 4.0" Barrel
- 6.5" Barrel
- 8.38" Barrel
- Satin Stainless Finish
- 5 Rounds
- External Hammer
- Stainless Steel Frame
- Stainless Steel Barrel
- Stainless Steel Cylinder
- Red Ramp Front Sight
- Interchangeable Front Sight
- Adjustable Rear Sight
- Adjustable White Outline Rear Sight
- Polymer Grips



460 S&W MAGNUM

- 5.0" Barrel
- 8.38" Barrel
- Satin Stainless Finish
- 5 Rounds
- External Hammer
- Stainless Steel Frame
- Stainless Steel Barrel
- Stainless Steel Cylinder
- Red Ramp Front Sight
- Interchangeable Front Sight
- Adjustable Rear Sight
- Polymer Grips



S&W[®] EXTRA LARGE FRAME REVOLVERS

In 2003 the gunsmiths and engineers at Smith & Wesson[®] wanted to deliver maximum power for serious handgun hunters. The power they sought required an entirely new frame, the massive "X-Frame", and was the basis for the new Model S&W500[™], the most powerful production revolver in the world. This ushered in the era of the "big gun" and was only the beginning. For ultimate power and velocity there's nothing even close to an X-Frame model handgun.

Starting with their Extra Large Frame, the Smith & Wesson[®] engineers worked to deliver maximum velocity - over 2,300 feet per second - to reach the target faster than ever before. The 460XVR[™] has interchangeable compensators to accommodate every load. Only Smith & Wesson[®] could deliver this much power, this much velocity and this much accuracy in a precision, production revolver.

Not all features available in all configurations. See the corresponding section charts for individual SKU features on pages 62-63.



External Hammer for Single and Double Action Fire



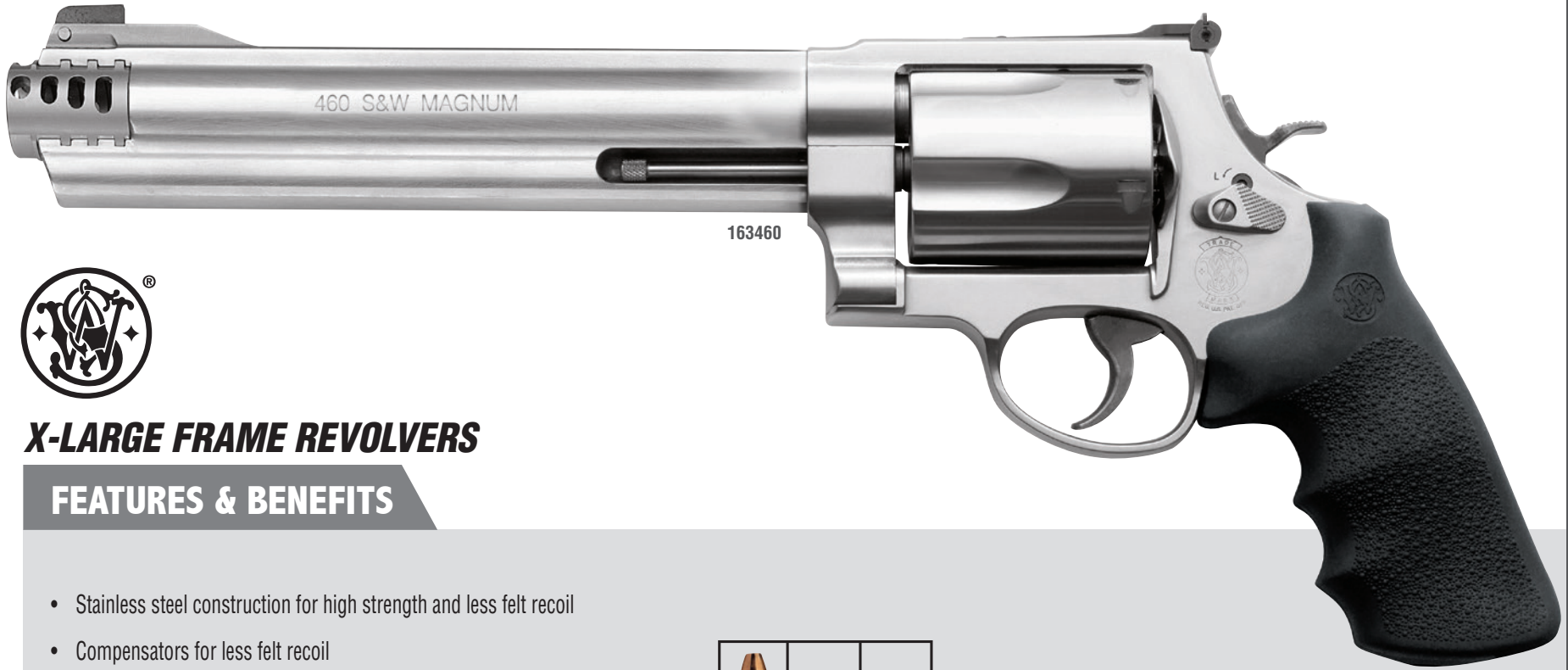
Red Ramp Front Sight



Interchangeable Front Sight



Adjustable White Outline Rear Sight



X-LARGE FRAME REVOLVERS

FEATURES & BENEFITS

- Stainless steel construction for high strength and less felt recoil
- Compensators for less felt recoil
- Various front and rear sights
- Smooth double action and short, crisp single action trigger pull



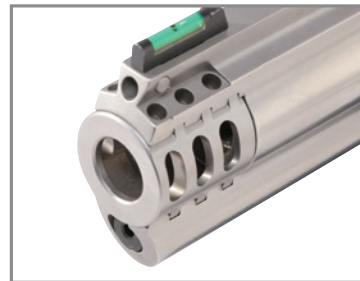
The versatile 460XVR™ revolver can fire three different rounds to accommodate any shooting application.



Adjustable Rear Sight



Ported Barrel



Removable Compensator



Fixed Compensator

S&W® GOVERNOR® REVOLVERS

AVAILABLE FEATURES

f t i y /smithwessoncorp



410 SHOTSHELL 2-1/2", 45 ACP, 45 COLT

- 2.75" Barrel
- Matte Silver Finish
- Matte Black Finish
- 6 Rounds
- External Hammer
- Scandium Alloy Frame
- Stainless Steel Barrel
- Stainless Steel Cylinder
- Black Blade Front Sight
- Tritium Night Front Sight
- Fixed Rear Sight
- Polymer Grips



162410



160410



162411



S&W® GOVERNOR® REVOLVERS

Versatile. Lightweight. The Smith & Wesson® Governor® revolver puts six rounds of customizable response under your control. Load with .410 2 1/2" shotshells, .45 ACP or .45 Colt - alone or in combination with the included moon clips - and hit your target in every situation. Plus, it's from the leading expert in revolver manufacturing over the past 166 years. Now that's confidence.

Not all features available in all configurations. See the corresponding section charts for individual SKU features on pages 62-63.



External Hammer for Single and Double Action Fire



Black Blade Front Sight



Tritium Night Front Sight



Fixed Rear Sight



162410

GOVERNOR® REVOLVERS

FEATURES & BENEFITS

- Patented, heat treated scandium-alloy frame for superior strength and reduced weight
- 6-round capacity
- Shock absorbing grip
- Capable of firing three different rounds: 410 Shotshell - 2-1/2", 45 ACP, 45 Colt
- Matte black or matte silver finish available



Capable of Firing Three Different Rounds
410 Shotshell 2-1/2", 45 ACP, 45 Colt



Stainless Steel, 6-Round Cylinder



Shock Absorbing Grip



Crimson Trace® Lasergrip®

S&W® PISTOL SPECIFICATIONS

Model 41 SW22 Victory®

SKU	Caliber/ Magazine Capacity	Action		Measurements				Weight		Front Sights			Rear Sights		Grips			Frame Material		Slide/Barrel Material		Frame Finish		Slide Finish				Features			
		Blowback	Single Action	Barrel Length (in)	Barrel Length (cm)	Overall length (in)	Overall length (cm)	Ounces	Grams	Fiber Optic	Black Blade	Patridge	Adjustable Fiber Optic	Square Notch Black Blade	Wood Laminate	Textured Thumb Rest	Textured Polymer	Stainless Steel	Carbon Steel	Stainless Steel	Carbon Steel	Blued	Matte Silver	Kryptek™ Highlander™ Camo	Blued	Kryptek™ Highlander™ Camo	Matte Silver	Thumb Safety	Adjustable Trigger Stop	Picatinny-Style Rail	Threaded Barrel
108490	10	•		5.5	13.9	9.2	23.4	37.1	1051.8	•			•		•	•	•	•	•	•		•			•	•	•	•	•	•	
10201	10	•		5.5	13.9	9.2	23.4	37.0	1049.0	•			•		•	•	•	•	•	•		•			•	•	•	•	•	•	
10297	10	•		5.5	13.9	9.2	23.4	37.0	1049.0	•			•		•	•	•	•	•	•		•			•	•	•	•	•	•	
11536	10	•		5.5	13.9	9.2	23.4	36.0	1020.6		•		•		•	•	•	•	•	•		•			•	•	•	•	•	•	
130511	10		•	5.5	13.9	10.5	26.7	44.5	1261.6			•		•			•	•	•	•			•			•	•				
130512	10		•	7.0	17.8	12.0	30.5	44.7	1267.2			•		•			•	•	•	•			•			•	•				

SW1911 E-Series™

SKU	MODEL	Action			Measurements				Weight		Front Sights			Grips			Frame Material		Slide/Barrel Material		Frame Finish		Slide Finish		Features									
		9mm	40 S&W	45 AUTO	Striker Fire	Single Action	Barrel Length (in)	Barrel Length (cm)	Overall length (in)	Overall length (cm)	Ounces	Grams	Fiber Optic	Night Sight	White Dot	Night Sight	White 2-Dot	HI-VIZ® 2-Dot Red	Polymer	Wood Laminate	Stainless Steel	Scandium Alloy	Polymer	Stainless Steel	Black	Matte Silver	Gray	Flat Dark Earth	Black	Matte Silver	Thumb Safety	TLCI	10 lb. Trigger Pull	Picatinny-Style Rail
108483	SW1911			8/7	•	4.25	10.8	7.95	20.2	29.5	836.3		•		•			•	•	•	•		•					•	•				•	•
108485	SW1911			8/7	•	4.25	10.8	7.95	20.2	29.5	836.3		•		•			•	•	•	•		•					•	•				•	•
108409	SW1911			8	•	5.0	12.7	8.7	22.1	40.4	1145.3		•		•			•	•	•	•		•					•	•				•	•
108411	SW1911			8	•	5.0	12.7	8.7	22.1	41.0	1162.4		•		•			•	•	•	•		•					•	•				•	•
108482	SW1911			8	•	5.0	12.7	8.7	22.1	39.6	1122.7			•		•			•	•	•		•					•	•				•	•
11995	SD9™	16			•	4.0	10.2	7.2	18.3	22.3	632.2			•		•			•	•	•		•					•	•				•	•
11998	SD9™	16			•	4.0	10.2	7.2	18.3	23.2	657.7			•		•			•	•	•		•					•	•				•	•
11996	SD40™	14			•	4.0	10.2	7.2	18.3	22.3	632.2			•		•			•	•	•		•					•	•				•	•
11999	SD40™	14			•	4.0	10.2	7.2	18.3	22.9	649.2			•		•			•	•	•		•					•	•				•	•
223900	SD9VE™	16			•	4.0	10.2	7.2	18.3	22.8	646.4			•		•			•	•	•		•					•	•				•	•
123900	SD9VE™	10			•	4.0	10.2	7.2	18.3	22.7	643.0			•		•			•	•	•		•					•	•				•	•
123902	SD9VE™	10			•	4.0	10.2	7.2	18.3	23.1	654.9			•		•			•	•	•		•					•	•				•	•
123903	SD9VE™	10			•	4.0	10.2	7.2	18.3	23.2	657.7			•		•			•	•	•		•					•	•				•	•
11907	SD9VE™	10			•	4.0	10.2	7.2	18.3	23.2	657.7	•			•				•	•	•		•					•	•				•	•
223400	SD40VE™	14			•	4.0	10.2	7.2	18.3	22.6	640.7			•		•			•	•	•		•					•	•				•	•
123400	SD40VE™	10			•	4.0	10.2	7.2	18.3	22.4	635.0			•		•			•	•	•		•					•	•				•	•
123402	SD40VE™	10			•	4.0	10.2	7.2	18.3	22.9	649.2			•		•			•	•	•		•					•	•				•	•
123403	SD40VE™	10			•	4.0	10.2	7.2	18.3	23.1	654.9			•		•			•	•	•		•					•	•				•	•
11908	SD40VE™	10			•	4.0	10.2	7.2	18.3	23.1	654.9	•			•				•	•	•		•					•	•				•	•

MEDIUM (K) FRAME
REVOLVERS

SKU	MODEL	Caliber/ Round Capacity				Action	Measurements				Weight		Front Sights			Rear Sights		Grips		Frame Material	Cylinder Material	Barrel Material	Finish		Other Features
		22 LR	38 S&W Special +P	357 Magnum/38 S&W Special +P	44 Magnum/ 44 Special		Barrel Length (in)	Barrel Length (cm)	Overall length (in)	Overall length (cm)	Ounces	Grams	Red Ramp	Integral Ramp	Partridge	Integral	Adjustable	Adjustable White Outline	Black Polymer				3-5-7 Textured Wood	Textured Wood	
160584	617	10				•	4.13	10.5	9.13	23.2	39.0	1105.7			•		•			•	•	•	•		
160578	617	10				•	6.0	15.2	11.13	28.6	44.1	1250.2			•		•			•	•	•	•		
162802	67		6			•	4.13	10.5	8.88	22.5	36.0	1020.6	•				•			•	•	•	•		
162506	64		6			•	4.13	10.5	9.69	24.6	35.1	995.1		•		•				•	•	•	•		
10061	66 Combat Magnum			6		•	2.75	7.0	7.8	19.8	33.5	949.7	•			•				•	•	•		•	
162662	66 Combat Magnum			6		•	4.25	10.8	9.6	24.6	36.9	1046.1	•				•			•	•	•		•	

MEDIUM (L) FRAME REVOLVERS

164222	686		6			•	4.13	10.5	9.56	24.3	39.7	1125.5	•				•			•	•	•	•		
164224	686		6			•	6.0	15.2	11.94	30.3	44.8	1270.1	•				•			•	•	•	•		
164192	686 PLUS		7			•	2.5	6.4	7.5	19.1	34.1	966.7	•				•			•	•	•	•		
164300	686 PLUS		7			•	3.0	7.6	8.18	20.8	36.8	1043.3	•				•			•	•	•	•		
164194	686 PLUS		7			•	4.13	10.5	9.56	24.3	39.0	1105.7	•				•			•	•	•	•		
164198	686 PLUS		7			•	6.0	15.2	11.94	30.3	44.2	1253.1	•				•			•	•	•	•		
162069	69 Combat Magnum			5		•	4.25	10.8	9.6	24.6	37.4	1060.3	•				•			•	•	•		•	
10064	69 Combat Magnum			5		•	2.75	7.0	7.8	19.8	34.4	975.2	•				•			•	•	•		•	
150712	686 Deluxe		7			•	6.0	15.2	11.94	30.3	45.4	1287.1	•				•			•	•	•	•		
150713	686 Deluxe		7			•	3.0	7.6	8.19	20.8	37.1	1051.8	•				•			•	•	•	•		
150853	686 PLUS		7			•	3.0	7.6	8.25	20.9	37.4	1060.3	•				•			•	•	•	•		•
150854	686 PLUS		7			•	5.0	12.7	10.25	26.0	43.6	1236.1	•				•			•	•	•	•		•
150855	686 PLUS		7			•	7.0	17.8	12.3	31.1	48.6	1377.8	•				•			•	•	•	•		•



S&W® REVOLVER SPECIFICATIONS

LARGE (N) FRAME REVOLVERS

SKU	MODEL	Action					Measurements				Weight		Front Sights					Rear Sights			Grips				Frame Material		Cylinder Material		Barrel Material		Finish			Other Features										
		44 Magnum/44 Special	45 ACP	500 S&W Magnum	460 S&W Magnum	410 2-1/2 Shotshell, 45 Colt, 45 ACP	Single Action/Double Action	Barrel Length (in)	Barrel Length (cm)	Overall Length (in)	Overall Length (cm)	Ounces	Grams	Red Ramp	Gold Bead Patridge	Hi-VIZ® Fiber Optic	Interchangeable	Tritium Night Sight	Black Blade	Integral	Adjustable	Adjustable White Outline	Black Polymer	Textured Wood	Crimson Trace® LaserGrip®	Jerry Miculek Signature Wood	Stainless Steel	Scandium Alloy	Stainless Steel	Titanium Alloy	Stainless Steel	Satin Stainless	Matte Silver	Matte Black	Removable Compensator	Ported Barrel	Ported Compensator							
150715	629 Deluxe	6				•	3.0	7.6	6.83	17.3	40.2	1139.7	•							•	•			•		•		•																
150714	629 Deluxe	6				•	6.5	16.5	11.63	29.5	50.7	1437.3	•							•		•		•		•		•																
160936	625 JM		6			•	4.13	10.5	9.38	23.8	40.5	1148.2		•						•				•		•		•																
163414	329 PD	6				•	4.13	10.5	9.5	24.1	25.2	714.4			•					•		•		•		•		•																
163603	629	6				•	4.13	10.5	9.63	24.4	41.8	1185.0	•								•	•		•		•		•																
163606	629	6				•	6.0	15.2	11.63	29.5	45.0	1275.8	•								•	•		•		•		•																
163638	629 Classic	6				•	6.5	16.5	12.0	30.5	48.4	1372.1				•					•	•		•		•		•																
163636	629 Classic	6				•	5.0	12.7	10.5	26.7	44.7	1267.2				•					•	•		•		•		•																
163500	S&W500™			5		•	8.38	21.3	15.0	38.1	71.4	2024.2				•					•	•		•		•		•														•		
163504	S&W500™			5		•	4.0	10.2	10.25	26.0	55.6	1576.3	•								•	•		•		•		•																
163501	S&W500™			5		•	8.38	21.3	15.0	38.1	69.1	1959.0			•	•					•	•		•		•		•																
163565	S&W500™			5		•	6.5	16.5	12.9	32.7	60.7	1720.8	•								•	•		•		•		•																
163460	460 XVR™			5		•	8.38	21.3	15.0	38.1	72.2	2046.9				•					•	•		•		•		•																
163465	460V			5		•	5.0	12.7	11.25	28.6	60.7	1720.8	•								•	•		•		•		•																
162410	GOVERNOR®				6	•	2.75	7.0	8.5	21.6	29.9	847.7					•				•	•		•		•		•																
160410	GOVERNOR®				6	•	2.75	7.0	8.5	21.6	30.3	859.0					•				•	•		•		•		•																
162411	GOVERNOR®				6	•	2.75	7.0	8.5	21.6	29.7	842.0					•				•	•		•		•		•																

EXTRA LARGE (X) FRAME REVOLVERS

S&W® GOVERNOR®

