

DURABOOK

Prepared for the Unexpected

Fully-Rugged Notebook PC

Z14I User's Manual



DURABOOK

Table of Contents

BEFORE YOU START	5
PACKAGE CONTENTS	5
PRODUCT OVERVIEW	6
<i>Front View</i>	6
<i>Back View</i>	7
<i>Right View</i>	8
<i>Left View</i>	9
<i>Rear View</i>	10
STATUS INDICATORS	11
GETTING STARTED	12
INSTALLING THE BATTERY.....	12
<i>Charging the Battery</i>	14
<i>Charging Time</i>	14
<i>Checking the Battery Level</i>	14
<i>When to replace the Battery Pack</i>	15
<i>Removing the Battery</i>	15
USING THE SECONDARY BATTERY	16
<i>Installing the Secondary Battery</i>	16
<i>Removing the Secondary Battery</i>	18
USING THE SECONDARY STORAGE	19
<i>Installing the Secondary Storage</i>	19
<i>Removing the Secondary Storage</i>	21
USING THE OPTICAL DISC DRIVE (ODD)	22
<i>Installing the Optical Disc Drive (ODD)</i>	22
<i>Removing the Optical Disc Drive (ODD)</i>	24
USING THE STORAGE DRIVE	25
<i>Installing the Storage Drive</i>	25
<i>Removing the Storage Drive</i>	27
CONNECTING TO POWER.....	28
<i>Connecting the AC Adapter</i>	28
<i>Using Battery Power</i>	28
<i>Configuring the Power Settings</i>	29
STARTING YOUR NOTEBOOK	30
<i>Turning On Your Device</i>	30
<i>Turning Off Your Device</i>	30
USING THE KEYBOARD	32
USING THE TOUCH PAD	33
OPERATING YOUR NOTEBOOK.....	35
USING THE QUICK MENU	35
<i>Quick Menu Overview</i>	35

Viewing the Version Information.....	36
Viewing the Battery Charge Cycles	36
Configuring the Programmable Button (P1)	36
Configuring the Programmable Button (P2)	37
Assigning an Application to the P1/P2 Button.....	37
Accessing the Mobility Center.....	38
Configuring the Touchscreen Settings	39
Configuring External Antenna Switching Mode	40
USING THE CAMERA	41
Opening Camera App	41
Taking Photos.....	42
Recording Videos	42
Shooting Panorama Photos	44
Adjusting Brightness	45
Setting Photo Timer	46
Configuring Camera Settings	46
Viewing Photos/Videos	47

MAKING CONNECTIONS..... 48

INSTALLING THE MEMORY CARD	48
INSTALLING A SIM CARD.....	49
INSTALLING A SMART CARD	50
INSTALLING THE PC CARDS	51
CONNECTING THE MICROPHONE/HEADSET.....	52
CONNECTING USB DEVICES	53
CONNECTING TO EXTERNAL DISPLAYS	54
CONNECTING TO A LOCAL AREA NETWORK (LAN)	56
CONNECTING TO WIRELESS CONNECTIONS.....	57

USING THE BIOS SETUP UTILITY..... 65

BIOS SETUP MENU	65
MAIN MENU	67
ADVANCED MENU	68
BOOT MENU	74
SECURITY MENU	75
SAVE & EXIT MENU	76

MAINTAINING AND CARING FOR YOUR NOTEBOOK..... 77

PROTECTING YOUR NOTEBOOK	77
STORING AND HANDLING YOUR NOTEBOOK	77
CLEANING YOUR NOTEBOOK	79
TRAVELING WITH YOUR NOTEBOOK	80

TROUBLESHOOTING..... 81

PRELIMINARY CHECKLIST	81
SOLVING COMMON PROBLEMS	81
DISPLAY PROBLEMS	83
HARD DISK PROBLEMS	84
OTHER PROBLEMS	88

APPENDIX 89

COPYRIGHT	89
SPECIFICATIONS	89
REGULATORY STATEMENT	92
<i>Federal Communications Commission Statement</i>	92
<i>Declaration of Conformity</i>	92
<i>Battery Disposal</i>	93
<i>WARNING EXPLOSION HAZARD</i>	93
<i>CLASS 1 LASER PRODUCT</i>	93
SAFETY INSTRUCTIONS	96

Before You Start

Congratulations on your purchase of this notebook.

This fully-rugged notebook is portable and provides users with maximum mobile computing experience in a wide range of working environments. Before you begin using your notebook, read this chapter to familiarize yourself with the main components installed in the system.

Package Contents

If any of the following items are damaged, please contact your retailer.



Notebook



Power cord



DC 19V 90W power adapter



Standard 9-cell Li-ion
Battery



Stylus and strap



NOTE

- These pictures are for reference only. Actual items may slightly differ.
- Declaration of product weight: 3.6kg. The actual weight may vary by configuration.

Product Overview

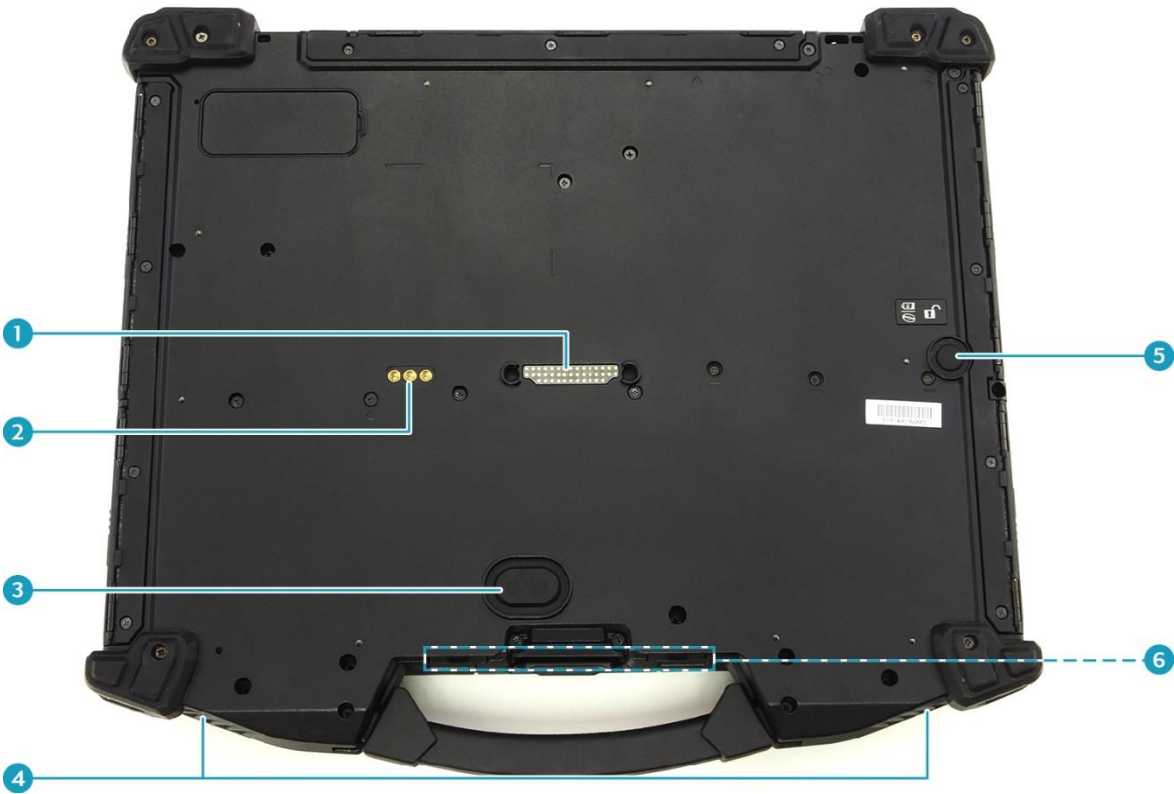
Front View



No.	Item	Description
1	Front camera	Takes pictures, records videos, or video conferences.
2	Camera cover	Protects the camera.
3	Microphones	Records the surrounding sound.
4	Display screen	Optional capacitive touch panel.
5	Programmable buttons (P1/P2)	Press to enter the chosen program (user definition).
6		
7	Status indicators	Indicates the corresponding function status.
8	Power button	Press to turn your notebook on or off.

No.	Item	Description
9	Waterproof keyboard	Press the keys to input information.
10	Fingerprint scanner (optional)	Scans fingerprints for biometric identification.
11	Touch pad	Points, selects, drags, or scrolls objects on the screen.
12	Touch pad button	Press to select objects or display a shortcut menu.
13	RFID reader (optional)	Reads tags for data collections from other device.

Back View

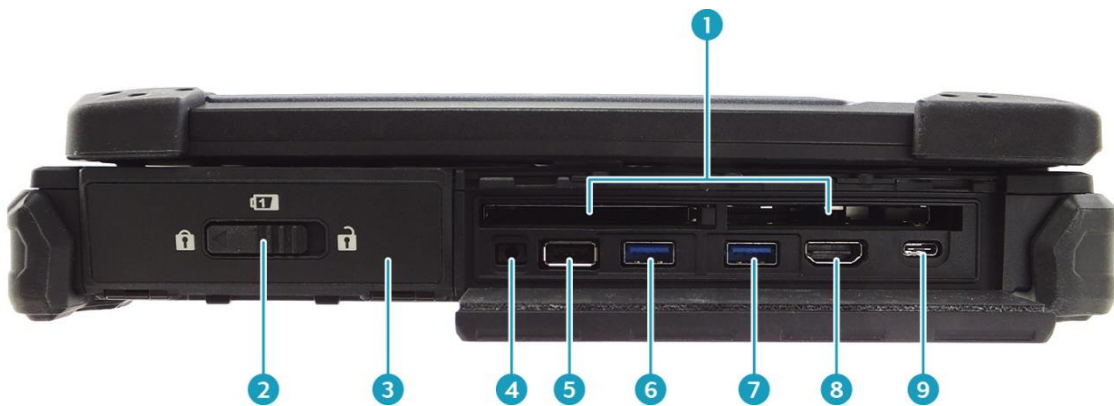


No.	Item	Description
1	Docking connector	Connects the notebook to a docking station.
2	RF Pass-thru connectors (x3) (optional)	Use for the external antenna of WWAN, GPS, and WLAN.

Before You Start

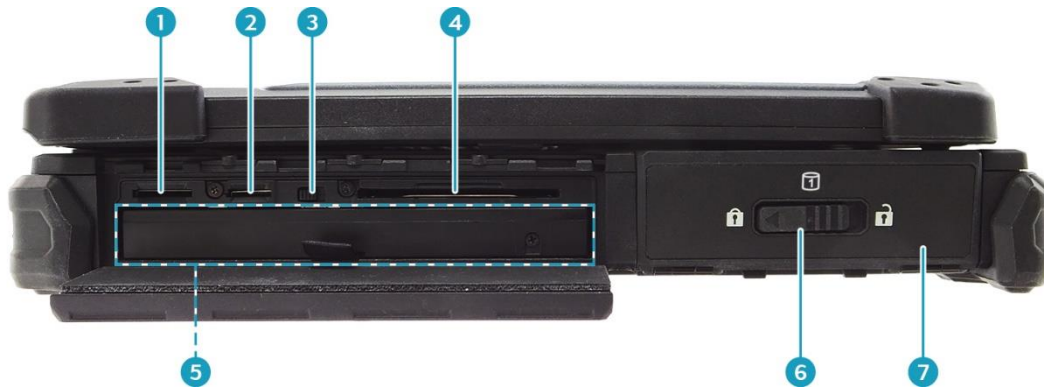
No.	Item	Description
3	Battery latch release button	Press and hold the button to disengage the battery connector.
4	Speakers	Emits sound.
5	Media bay latch release button	Press and hold the button to disengage the ODD/SSD/secondary battery connector.
6	Stylus holder	Stores the stylus.

Right View



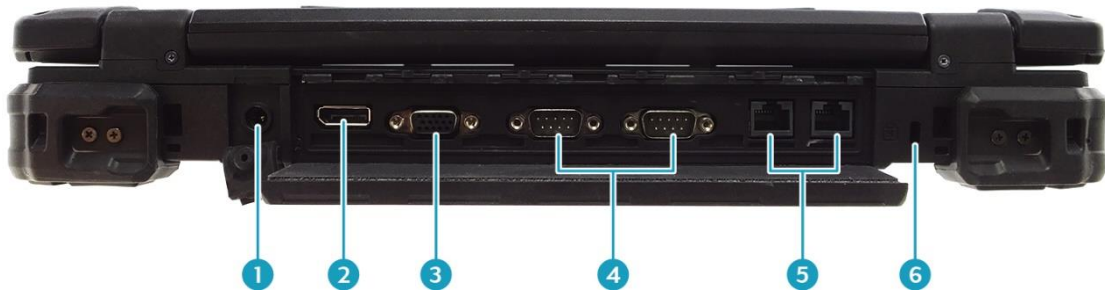
No.	Item	Description
1	PC card slots	Use to insert the PCMCIA Type II card or Express Card 54.
2	Battery compartment cover latch	Slide to the unlock position to release the battery compartment cover.
3	Battery compartment	Contains the battery.
4	Audio Combo jack	Connects to headphones, external speakers, or microphone.
5	USB 2.0 port	Connects to USB 2.0 peripheral devices.
6	USB 3.1 (Gen 1) port	Connects to USB 3.0 peripheral devices.
7	USB 3.1 (Gen 1) port	Supports USB charging when the system is off (DC mode only).
8	HDMI port	Connects to an HDMI device such as an external HDMI LCD TV.
9	USB Type C port	Connects to USB Type C peripheral devices.

Left View



No.	Item	Description
1	SIM card slot	Use to insert a SIM card.
2	Card reader	Use to insert memory cards to transfer pictures, music, and data between your notebook and flash compatible devices. The card reader supports SD (Secure Digital), SDXC, Mini-SD (with adapter).
3	RF Signal Slide-Switch	Slide the switch to enable/disable the RF functions.
4	Smart card reader	Use to insert smart cards.
5	Media bay	Varies depending on SKU: <ul style="list-style-type: none"> • Optical disk drive • Secondary battery pack • Secondary storage
6	Storage Drive compartment cover latch	Slide to the unlock position to release the Storage Drive compartment cover.
7	Storage Drive compartment	Contains the storage drive.

Rear View



No.	Item	Description
1	DC-in jack	Connects to the power adapter.
2	DP port	Connects to an external display.
3	VGA port	Connects to peripheral devices, such as an external monitor/projector.
4	RS-232 ports	Connects to serial peripheral devices.
5	RJ-45 ports	Connects to a local area network (LAN) using an Ethernet cable.
6	Kensington lock slot	Connects to a Kensington-compatible notebook security lock.

Status Indicators

The status indicators light up when a particular function of the notebook is active. Each indicator is marked with a symbol.



Icon	Item	Description
	Storage	Lights up (green) when the HDD/SSD/ODD is accessing data.
	Num Lock	Lights up (green) when Num Lock is activated.
	Caps Lock	Lights up (green) when Caps Lock is activated.
	Power	The LED light stays on (blue) when the system is running. When the system is in sleep mode, the LED blinks.
 	Battery	Indicates the battery status: <ul style="list-style-type: none"> Green: when the battery is fully charged (95% or above) Orange: when the battery is charging Flashing orange: charging error Red: when the battery capacity is lower than 7% Off: when discharged
	RF LED	Indicates the wireless connection status: <ul style="list-style-type: none"> Blue: Any of the RF features (WLAN/Bluetooth/WWAN) are activated. Off: None of the RF features (WLAN/Bluetooth/WWAN) are activated.
	Wired LAN	Indicates the wired network connection status: <ul style="list-style-type: none"> Green: a link is established Flashing Green: when there is activity on the port

Getting Started

This chapter will help you get started using the device.

CAUTION!

Before any internal installation procedures are carried out on the system, make sure the system is turned off and cooled down for 5 minutes. Failing to turn off the system before opening it can cause permanent damage to the system and serious or fatal injury to the user.

Installing the Battery

To install the battery, follow the steps below:

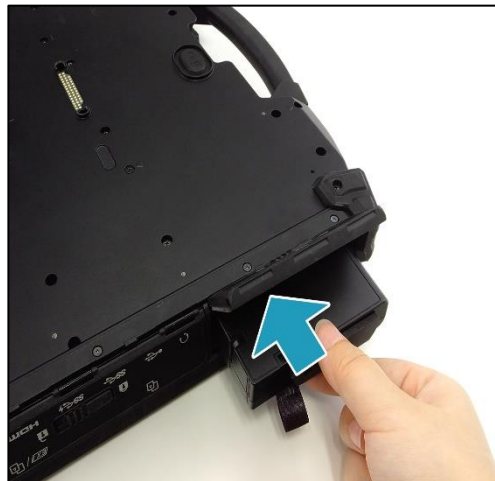
1. Slide the battery compartment cover latch to the unlock position to release the battery compartment cover.



2. Open the battery compartment cover.



3. Insert the battery into the battery compartment, as shown in the image below.



4. Push completely until the battery locks into place.

5. Close the battery compartment cover.



6. Slide the battery compartment cover latch to the lock position to secure the battery compartment cover in place.



Charging the Battery

The Li-Ion battery is not fully-charged upon purchase.

To charge the battery, follow the steps below:

1. Install the battery into your notebook. See procedures above.
2. Connect the AC adapter to the DC-in jack on your notebook.
3. Connect the AC adapter to the power cord.
4. Plug the power cord into an electrical outlet.

Charging Time

It takes approximately 3.0 hours (at 25°C) to fully charge the battery.



NOTE

- The charging time may be longer if you are using your notebook while charging the battery.

CAUTION!

- **DO NOT charge the battery if the temperature is below 0°C or higher than 45°C.**
- **Use only the supplied AC adapter. Using other AC adapters may damage the battery or your notebook.**

Checking the Battery Level

It is important that you monitor the battery status regularly to ensure you do not run out of power at a critical moment.



To check the remaining battery power, double-tap the battery icon (🔋) on the system tray.

The battery screen appears, as shown on the right:



When to replace the Battery Pack

The battery performance gradually decreases over time and usage. We recommend you replace your battery pack 18 to 24 months after purchase.

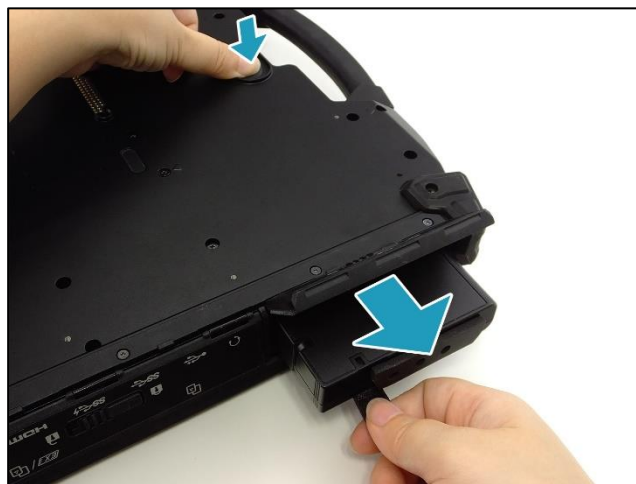
Removing the Battery

To remove the battery, follow the steps below:

1. Slide the battery compartment cover latch to the unlock position to release the battery compartment cover. Then open the battery compartment cover.



2. Press and hold the battery latch release button. Then pull the battery out to disengage it from its compartment.
3. Pull the battery out of the battery compartment.



4. Close the battery compartment cover. Then slide the battery compartment cover latch to the lock position to secure the battery compartment cover in place.

Using the Secondary Battery

Installing the Secondary Battery

To install the secondary battery, follow the steps below:

1. Slide the I/O device cover latch to the unlock position to release the I/O device cover.



2. Open the I/O device cover.



3. Insert the secondary battery into the media bay compartment. Then push completely until the secondary battery locks into place.



4. Close the I/O device cover.



5. Slide the I/O device cover latch to the lock position to secure the I/O device cover in place.



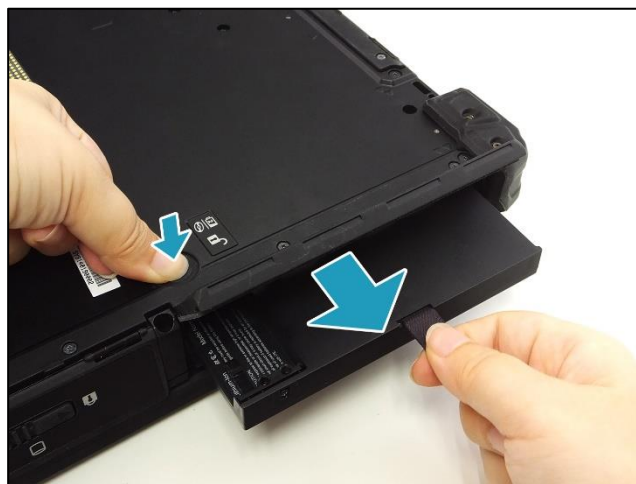
Removing the Secondary Battery

To remove the secondary battery, follow the steps below:

1. Slide the I/O device cover latch to the unlock position to release the I/O device cover. Then open the I/O device cover.



2. Press and hold the media bay latch release button. Then pull the secondary battery out to disengage it from its compartment.
3. Pull the secondary battery out of the media bay compartment.



4. Close the I/O device cover. Then slide the I/O device cover latch to the lock position to secure the I/O device cover in place.

Using the Secondary Storage

Installing the Secondary Storage

To install the secondary storage, follow the steps below:

1. Slide the I/O device cover latch to the unlock position to release the I/O device cover.



2. Open the I/O device cover.



Getting Started

3. Insert the secondary storage into the media bay compartment. Then push completely until the secondary storage locks into place.



4. Close the I/O device cover.



5. Slide the I/O device cover latch to the lock position to secure the I/O device cover in place.



Removing the Secondary Storage

To remove the secondary storage, follow the steps below:

1. Slide the I/O device cover latch to the unlock position to release the I/O device cover. Then open the I/O device cover.



2. Press and hold the media bay latch release button. Then pull the secondary storage out to disengage it from its compartment.
3. Pull the secondary storage out of the media bay compartment.



4. Close the I/O device cover. Then slide the I/O device cover latch to the lock position to secure the I/O device cover in place.

Using the Optical Disc Drive (ODD)

Installing the Optical Disc Drive (ODD)

To install the ODD, follow the steps below:

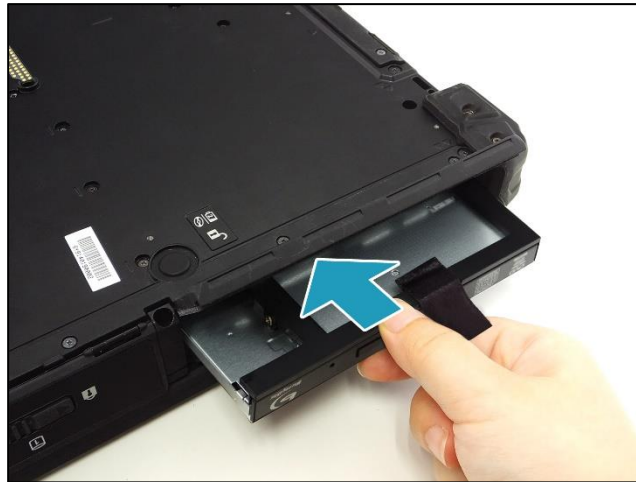
1. Slide the I/O device cover latch to the unlock position to release the I/O device cover.



2. Open the I/O device cover.



3. Insert the ODD into the media bay compartment. Then push completely until the ODD locks into place.



4. Close the I/O device cover.



5. Slide the I/O device cover latch to the lock position to secure the I/O device cover in place.



Removing the Optical Disc Drive (ODD)

To remove the ODD, follow the steps below:

1. Slide the I/O device cover latch to the unlock position to release the I/O device cover. Then open the I/O device cover.



2. Press and hold the media bay latch release button. Then pull the ODD out to disengage it from its compartment.
3. Pull the ODD out of the media bay compartment.



4. Close the I/O device cover. Then slide the I/O device cover latch to the lock position to secure the I/O device cover in place.

Using the Storage Drive

Installing the Storage Drive

To install the storage drive, follow the steps below:

1. Slide the Storage Drive compartment cover latch to the unlock position to release the Storage Drive compartment cover.

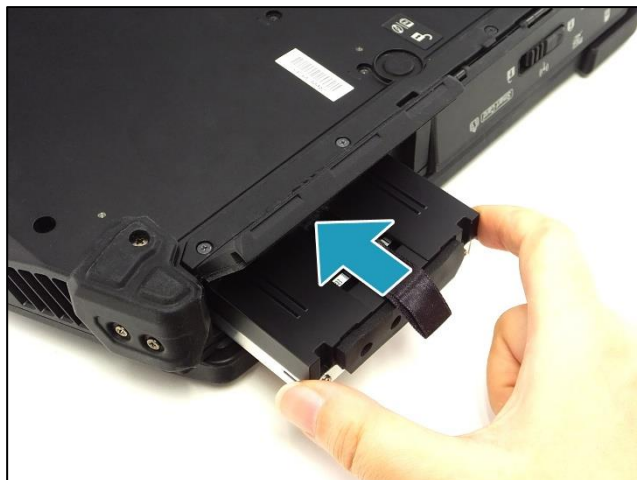


2. Open the Storage Drive compartment cover.



Getting Started

3. Insert the storage drive into its compartment. Then push completely until the storage drive is fully seated.



4. Close the Storage Drive compartment cover.



5. Slide the Storage Drive compartment cover latch to the lock position to secure the Storage Drive compartment cover in place.



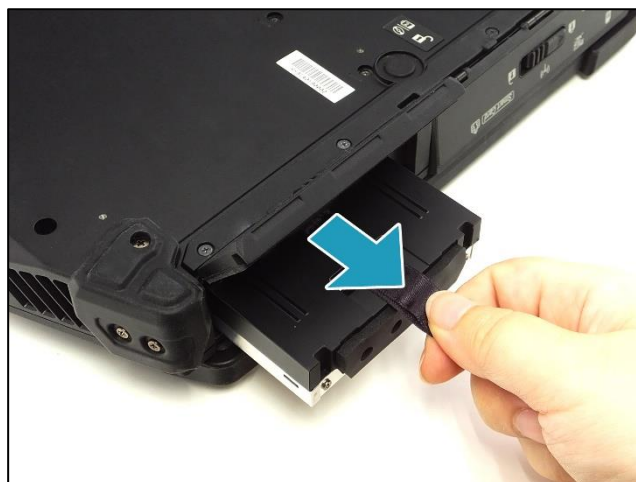
Removing the Storage Drive

To remove the storage drive, follow the steps below:

1. Slide the Storage Drive compartment cover latch to the unlock position to release the Storage Drive compartment cover. Then open the Storage Drive compartment cover.



2. Pull the storage drive out of its compartment.



3. Close the Storage Drive compartment cover. Then slide the Storage Drive compartment cover latch to the lock position to secure the Storage Drive compartment cover in place.

Connecting to Power

Your notebook can be powered up using the AC adapter or the Lithium-ion battery.

Connecting the AC Adapter

The AC adapter powers up your notebook and charges the battery.



1. Connect the AC adapter to the DC-in jack on your notebook.
2. Connect the AC adapter to the power cord.
3. Plug the power cord into an electrical outlet.

Using Battery Power

1. Install the charged battery in the battery compartment.
2. Remove the AC adapter (if plugged in). Your notebook will automatically use the battery power.

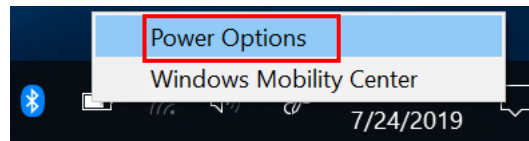


NOTE

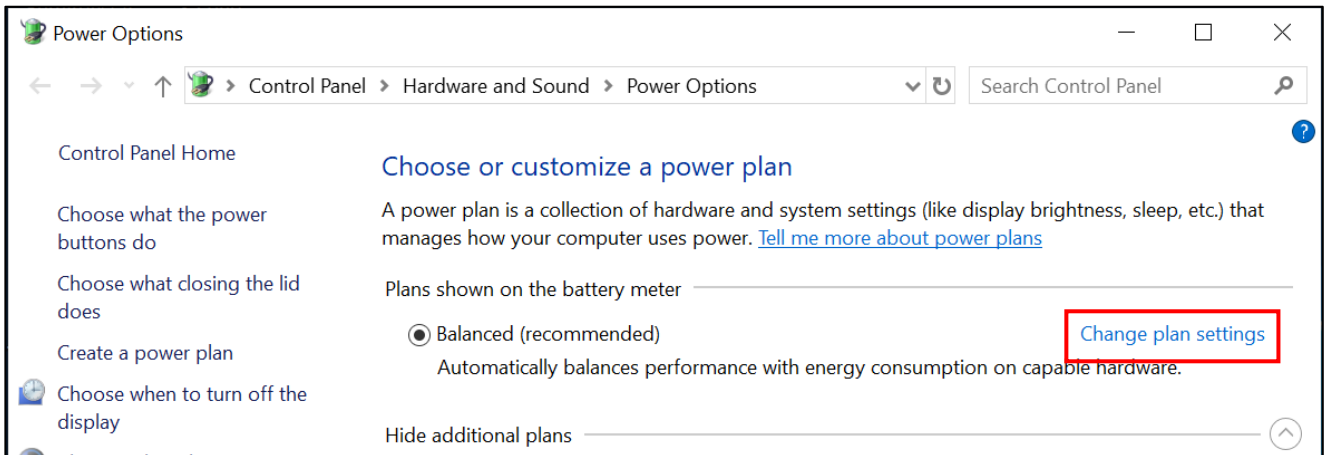
- If your notebook is connected to an electrical outlet and the battery is installed, your notebook will use power from the electrical outlet.

Configuring the Power Settings

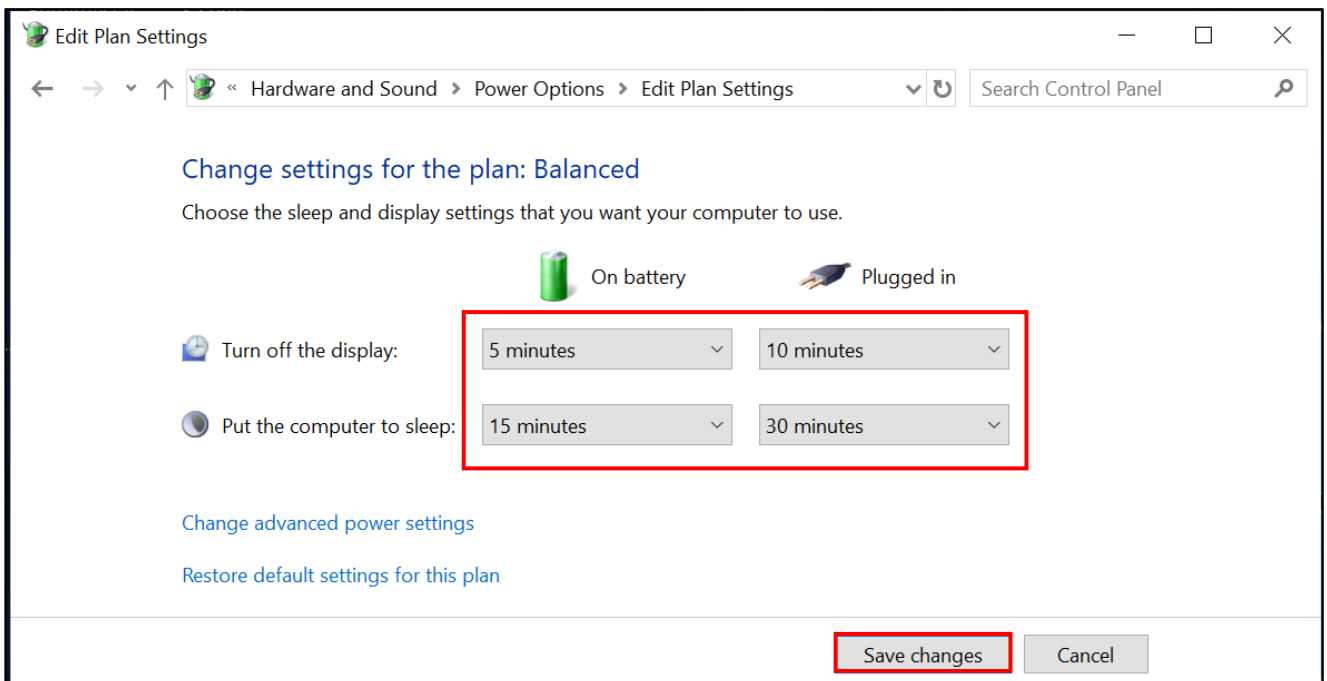
1. Right-click the battery icon (🔋) on the system tray. Then select **Power Options**.



2. Select **Change plan settings** to customize a power plan.



3. Change the desired sleep and display settings. Then select **Save changes**.




Starting Your Notebook

Turning On Your Device

1. To open the display panel, unlock the chassis latch to open the notebook chassis.





2. Lift the cover lid to the upright position.
3. Press the  button until the Power LED lights up.



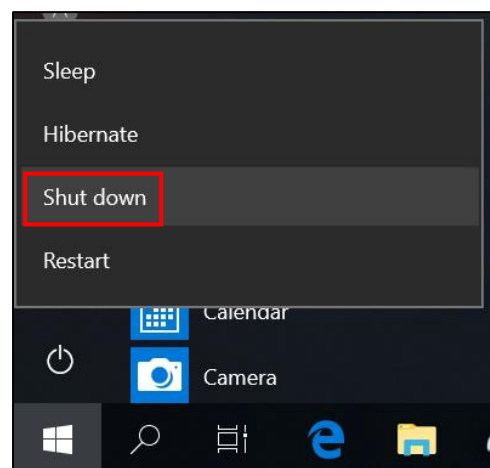
Besides using the keyboard or touch pad for operations on your notebook, you can also use a mouse. To use a wired mouse, simply plug it into an available USB port.

Turning Off Your Device

It is important to properly shut down your notebook to avoid the loss of unsaved data. To shut down your notebook, do the following:

Tap  >  > **Shut down.**

Wait for your notebook to power off completely before removing the power source (if necessary).





NOTE


- When closing the cover lid, make sure to press the chassis latch firmly until it locks into place.



Using the Keyboard

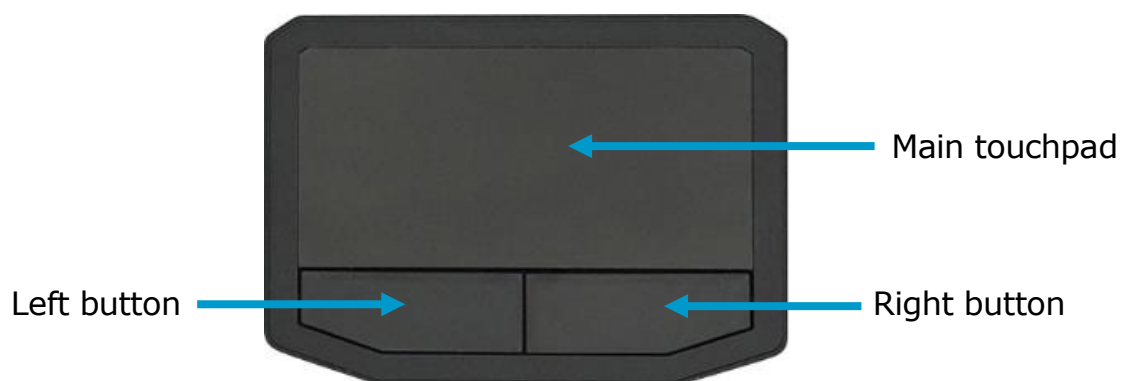


No.	Keys	Description
1	Function keys	These function keys are used to perform designated tasks. The tasks for each key may vary from one application to another.
2	[Fn]	Press the [Fn] key in combination with other keys to execute a command.
	[Fn] + F1	Toggles the display on/off.
	[Fn] + F2	Toggles between LCD, external display, or both.
	[Fn] + F3	Switches to suspend mode.
	[Fn] + F4	Decreases the keyboard illumination.
	[Fn] + F5	Increases the keyboard illumination.
	[Fn] + F6	Decreases the display brightness.
	[Fn] + F7	Increases the display brightness.
	[Fn] + F8	Decreases the audio volume.
	[Fn] + F9	Increases the audio volume.
	[Fn] + F10	Toggles the audio mute on/off.
[Fn] + Left Shift	Toggles the keyboard backlight on/off.	

		 NOTE This option is not available if the BIOS keyboard backlit timer setting is set to Off.
	[Fn] + Right Alt	Toggles the touchpad on/off.
3	Windows key	Press to display the Start menu. This action is the same as tapping the Start icon.
4	Application key	Press to display an application shortcut menu. This action is the same as right-clicking a mouse button.
5	Numeric keypad	Press the NumLk key to activate the numeric keypad. Press the keys on the numeric keypad to enter numbers or operands as you would on a calculator.

Using the Touch Pad

The touch pad is a cursor-pointing device that provides all the features of a two-button mouse. Its primary function is to move the cursor around the screen. You can also point, select, or drag items or objects on the screen.



Point

Slide your finger on the touch pad to point the cursor to an item or object on the screen.

Click

To left-click, move the cursor to the item or object on the screen, then lightly tap the touch pad or press the left button.

To right-click, move the cursor to the item or object on the screen, then press the right button.

Getting Started

Double-click

To double-click, move the cursor to the item or object on the screen, then tap the touch pad twice or press the left button twice.

Drag

To drag an item or object, press and hold the left button then slide your finger on the touch pad to move the item or object.


Scroll

To scroll through a page, press and hold the left button, then slide your finger on the touch pad to scroll.

Operating Your Notebook

This chapter will guide you through how to use your notebook.

Using the Quick Menu

To enter the Quick menu, tap the Quick Menu icon () on the task bar, as shown on the right.



You can also access the Quick menu in the *All apps* list.

Quick Menu Overview

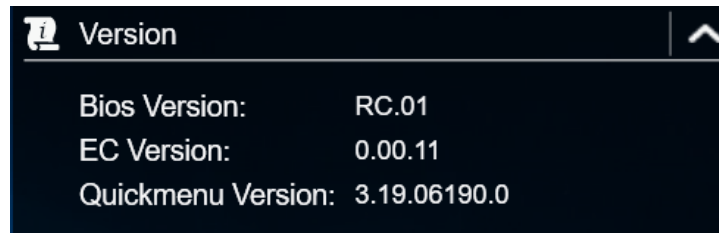


NOTE

- If the tab is green (i.e. ), the current function is activated.

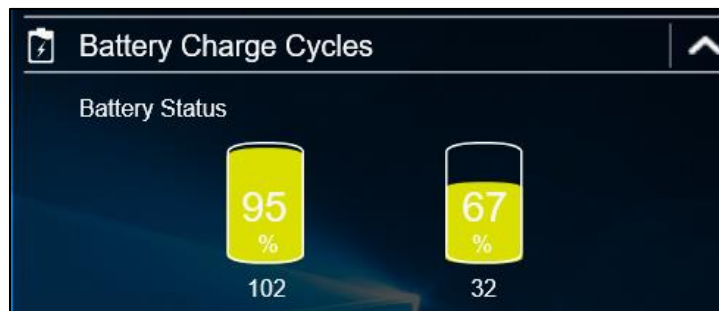
Viewing the Version Information

In the **Version** section, you can view the Bios version, EC version, and Quick Menu version.



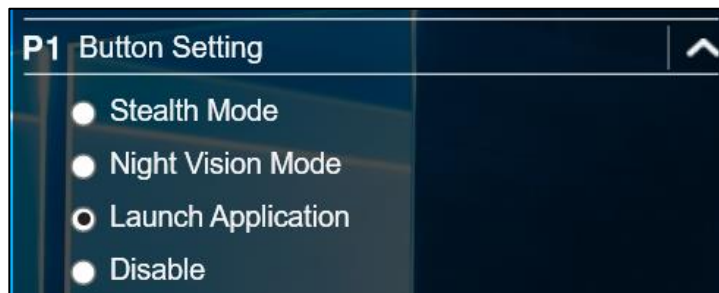
Viewing the Battery Charge Cycles

In the **Battery Charge Cycles** section, you can view the battery charge cycle and battery status.



Configuring the Programmable Button (P1)

In the **P1 Button Setting** section, you can assign the function for the **P1** button.

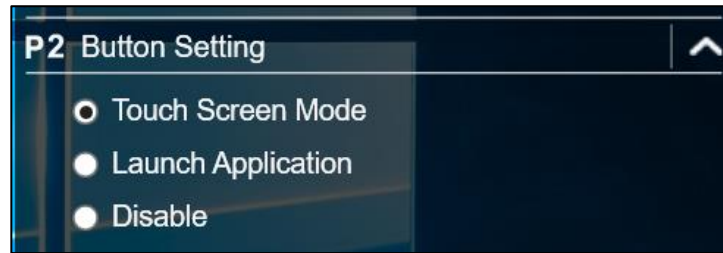


There are three available options:

- **Stealth Mode:** Turns off the LCD backlight, LEDs, speakers, and camera flash.
- **Night Vision Mode:** Adjusts the brightness of the LCD under 1.7 nits and turns off the LEDs and camera flash.
- **Launch Application:** Shortcut key for launching specific applications. To assign the application, refer to the "Assigning an Application to the P1/P2 Button" section.
- **Disable:** No function.

Configuring the Programmable Button (P2)

On the **P2 Button Setting** section, you can assign the function for the **P2** button.

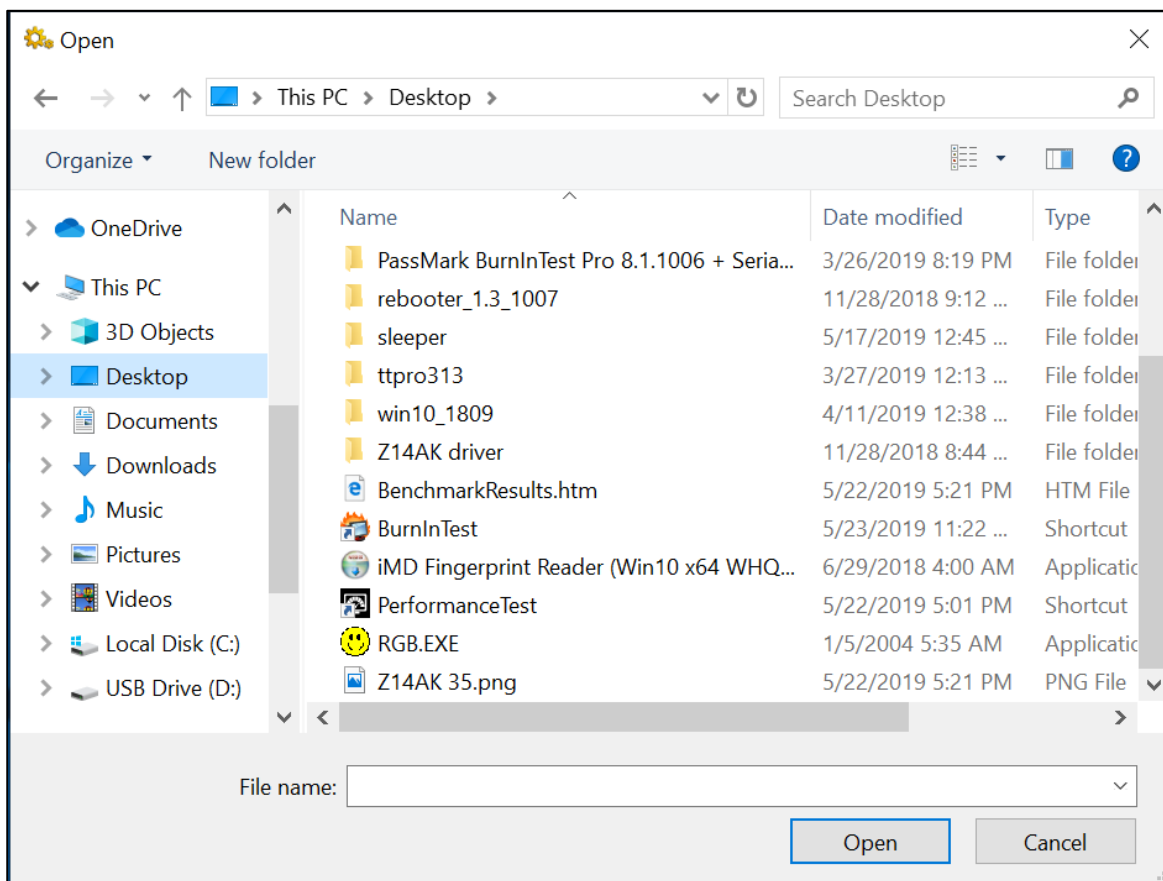


There are four available options:

- **Touch Screen Mode:** Toggles the touch screen mode.
- **Launch Application:** Shortcut key for launching the specific application. To assign the application, refer to the "Assigning an Application to the P1/P2 Button" section.
- **Disable:** No function.

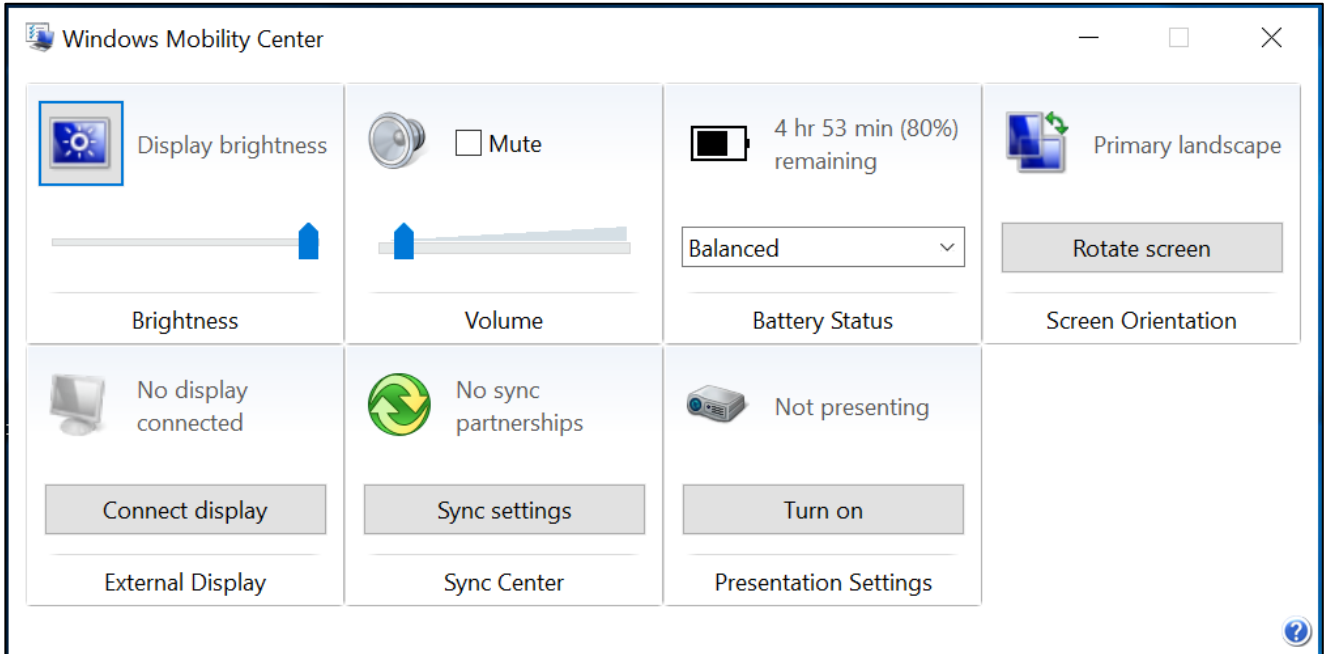
Assigning an Application to the P1/P2 Button

Tap the **P1-Key** or **P2-Key** tab to assign an application to the **P1** or **P2** button, respectively. Select the desired application and tap **Open**.



Accessing the Mobility Center

Tap the **Mobility Center** tab to adjust or configure the brightness, volume level, mute function, battery status, screen orientation, external display, sync, and presentation settings.



Configuring the Touchscreen Settings

Your notebook is equipped with a touchscreen. Using the touchscreen, you can navigate the system by using touch gestures (any input from your finger, a glove, or a stylus).

CAUTION!

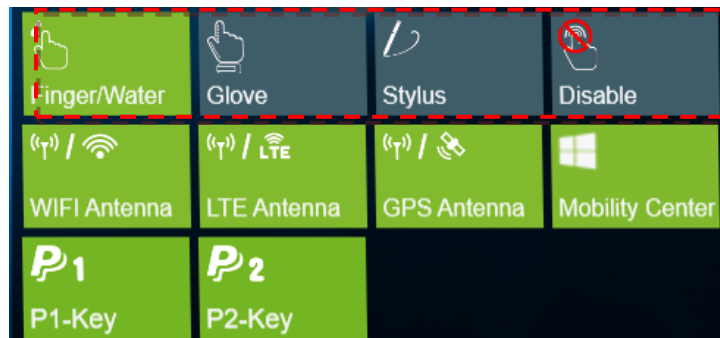
Do not use any sharp objects, such as a pen or pencil, on the touchscreen to prevent scratches.







NOTE

- An optional protective film has been attached to the screen before shipment. You should change the film when it gets worn out.

You can select the desired touch screen mode in the Quick menu.



Select one of the available options:

-  **Finger/Water**: Select **Finger/Water** if you are using your fingertips.
-  **Glove**: Select **Glove** if you are wearing gloves.
-  **Stylus**: Select **Stylus** if you are using a stylus.
-  **Disable**: Select **Disable** to disable the touch function.

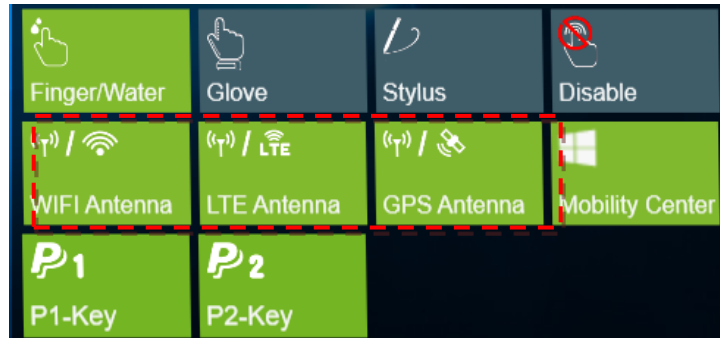


NOTE

- If the touchscreen mode is set to **Glove** or **Stylus** and the touchscreen is wet (i.e. from a spilled liquid), the touch function will not respond to any input. Make sure to keep the screen dry to ensure proper operation.
- If you assign the **P2** button as **Touch Screen Mode** (refer to page 37), you can easily switch the touchscreen mode by simply pressing the **P2** button.

Configuring External Antenna Switching Mode

Select the respective external antenna tab to configure the setting.



- Tap the **WIFI Antenna** tab to enable/disable the device to automatically switch to the external WLAN antenna when it is affixed on a docking station.
- Tap the **LTE Antenna** tab to enable/disable the device to automatically switch to the external WWAN antenna when it is affixed on a docking station.
- Tap the **GPS Antenna** tab to enable/disable the device to automatically switch to the external GPS antenna when it is affixed on a docking station.



NOTE

- If the tab is green, this indicates the current function is activated.

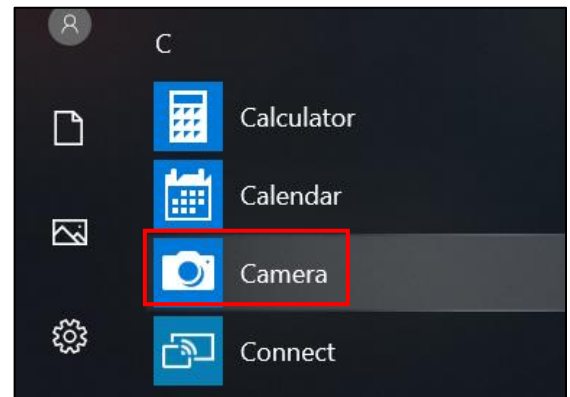
Using the Camera

Using the Camera application, you can use this notebook to take photos, videos, or panorama shots.

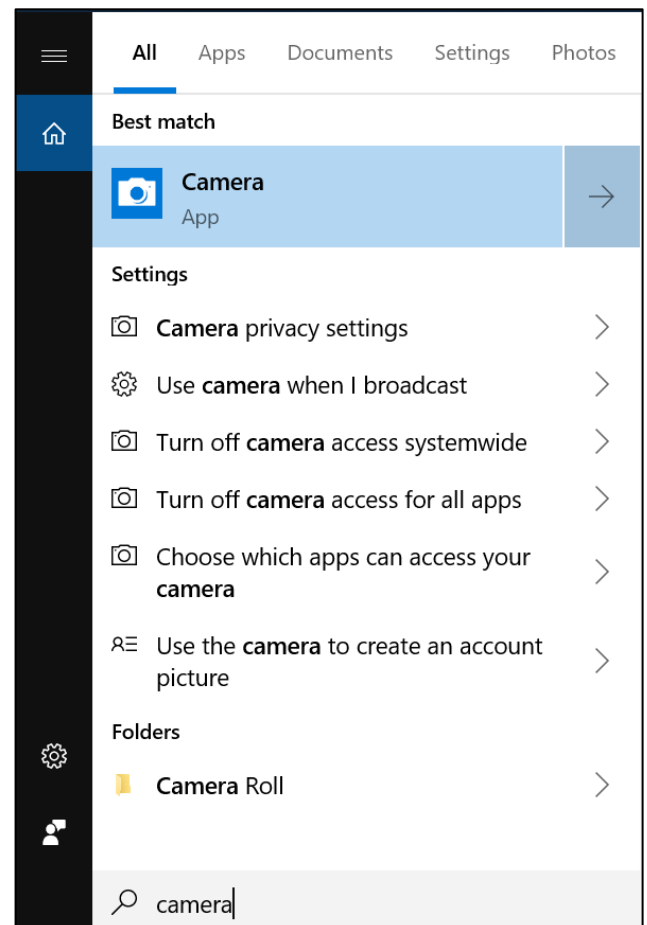
Opening Camera App

To access the Camera application, do one of the following:

- a. Tap  > **Camera**.

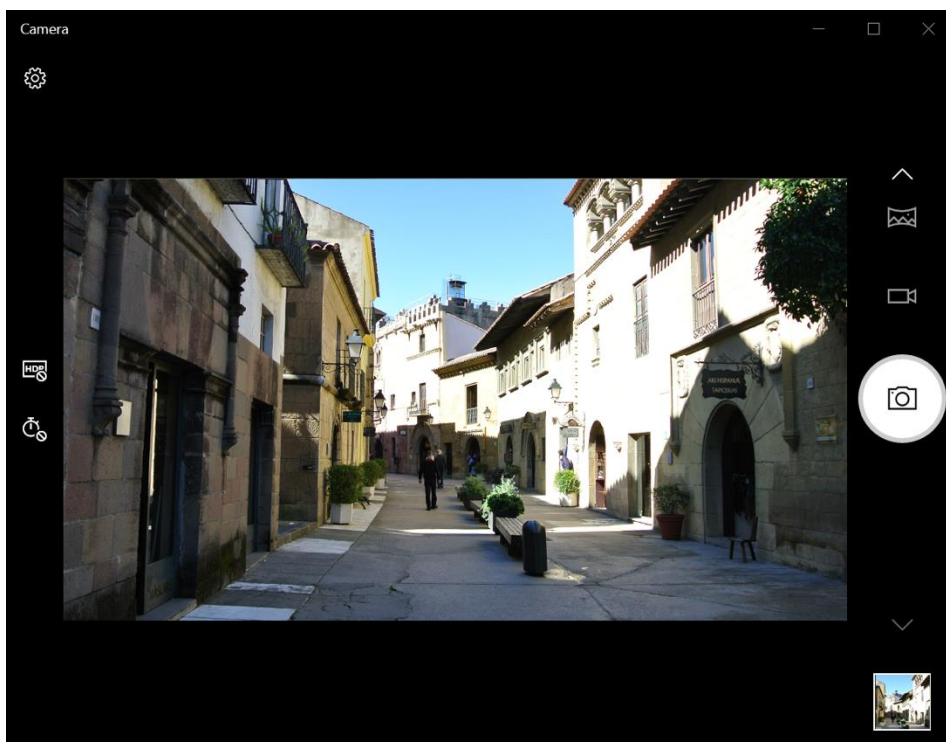


- b. In the Cortana search box, enter 'camera'. Then tap **Camera**.



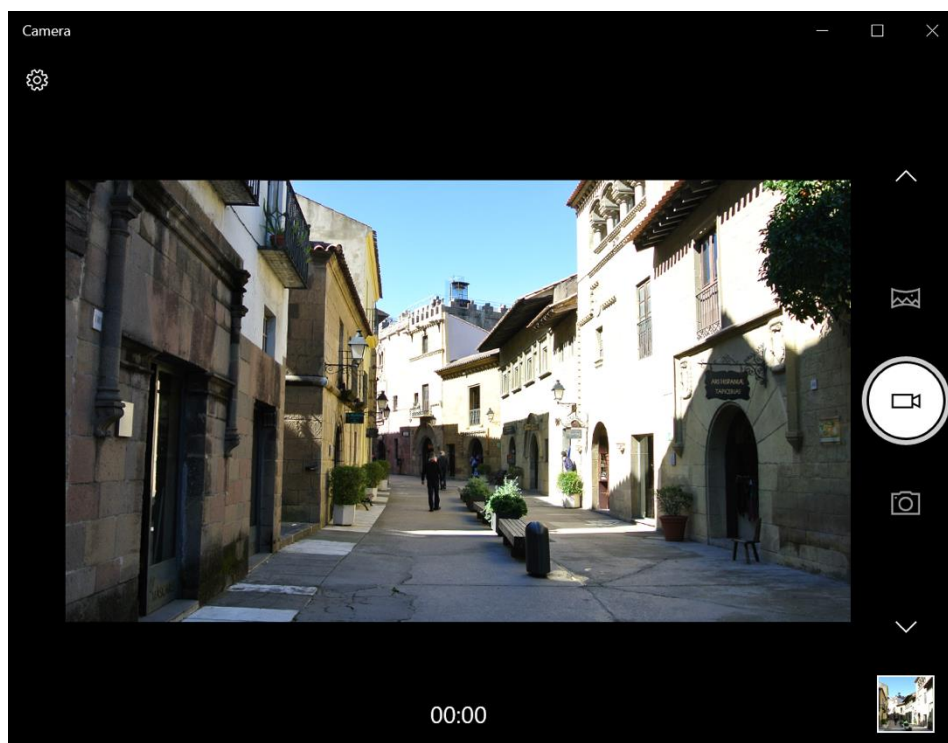
Taking Photos

Tap  to capture a photo.



Recording Videos


1. Tap  to switch to Video mode.

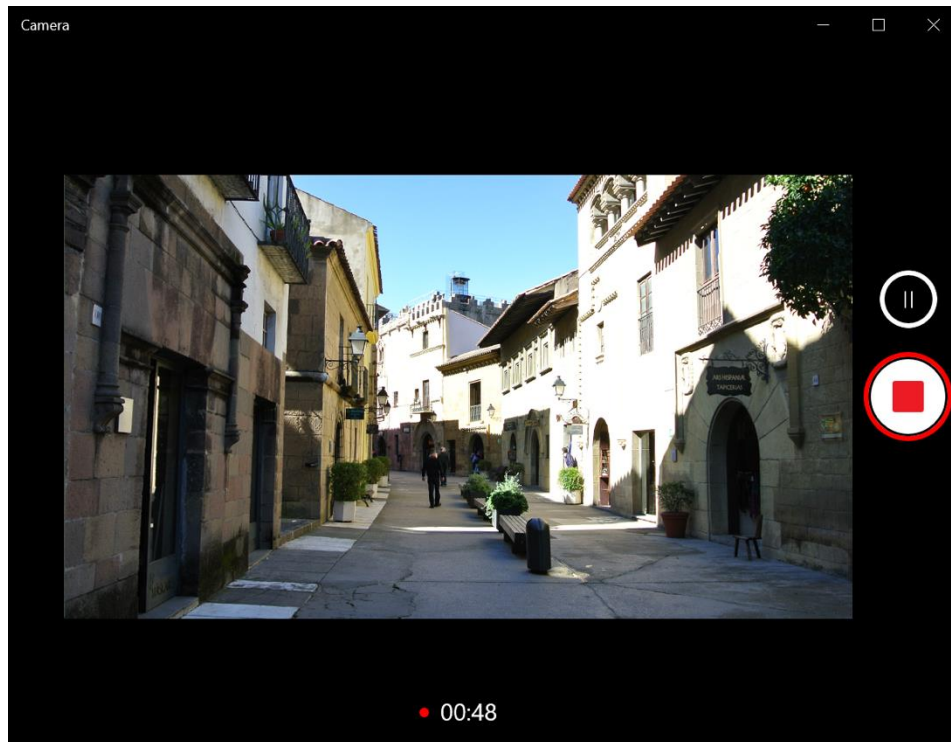







NOTE

- You can also toggle \wedge/\vee to switch to Video mode.

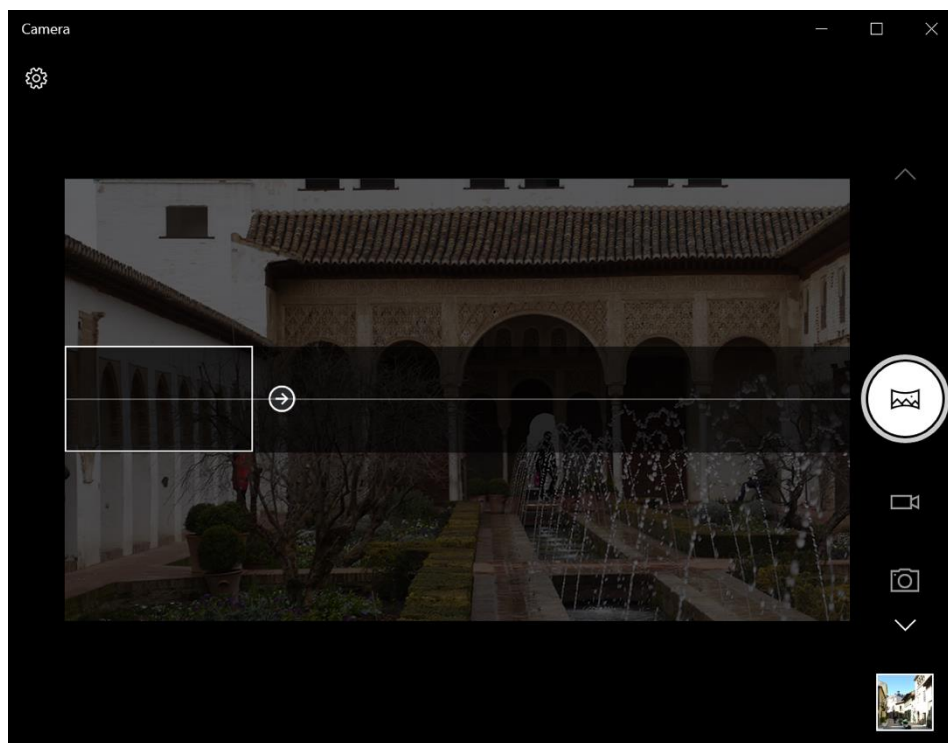
2. Tap  to start recording a video, as shown on the previous page. The recording time appears on the bottom of the screen.
3. During the video recording, you can do the following:



- Tap  to pause the recording. Then tap  to resume.
- Tap  to stop recording the video.


Shooting Panorama Photos

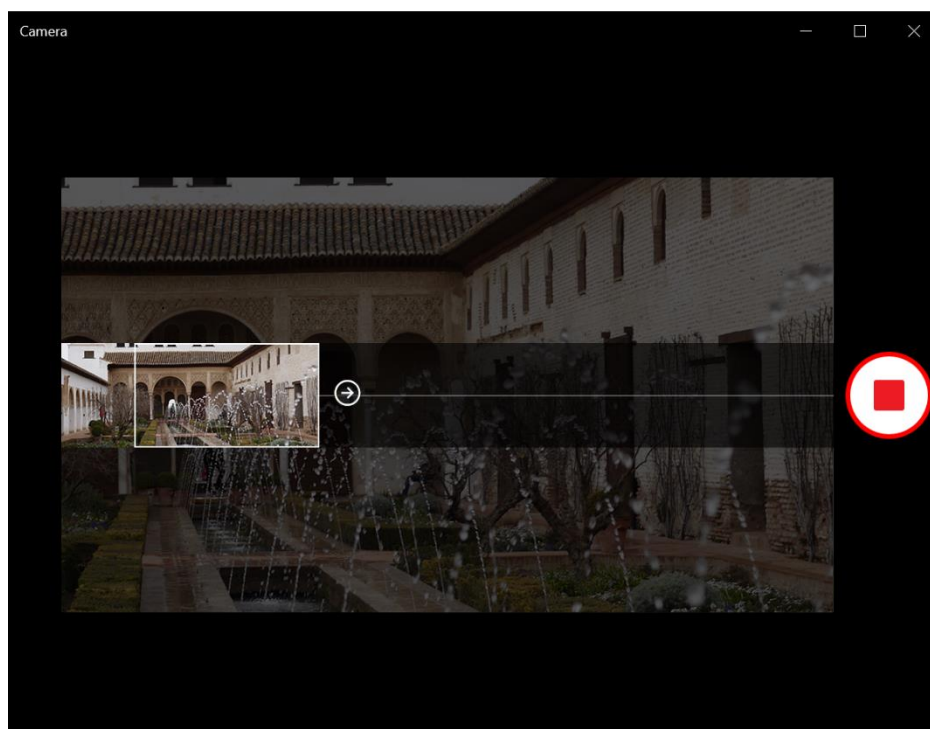
1. Tap  to switch to Panorama mode.




NOTE

- You can also toggle / to switch to Panorama mode.


2. Tap  to start shooting the panoramic photo, as shown above.
3. Slowly move the device toward the direction as shown on the screen.



- The video automatically ends when you reach the end of the shooting point as shown on the screen.

To manually stop the shooting, tap .

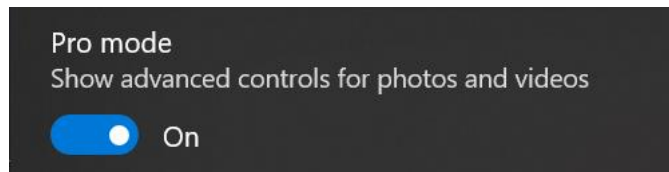
Adjusting Brightness

- Tap  to display the brightness control slider.

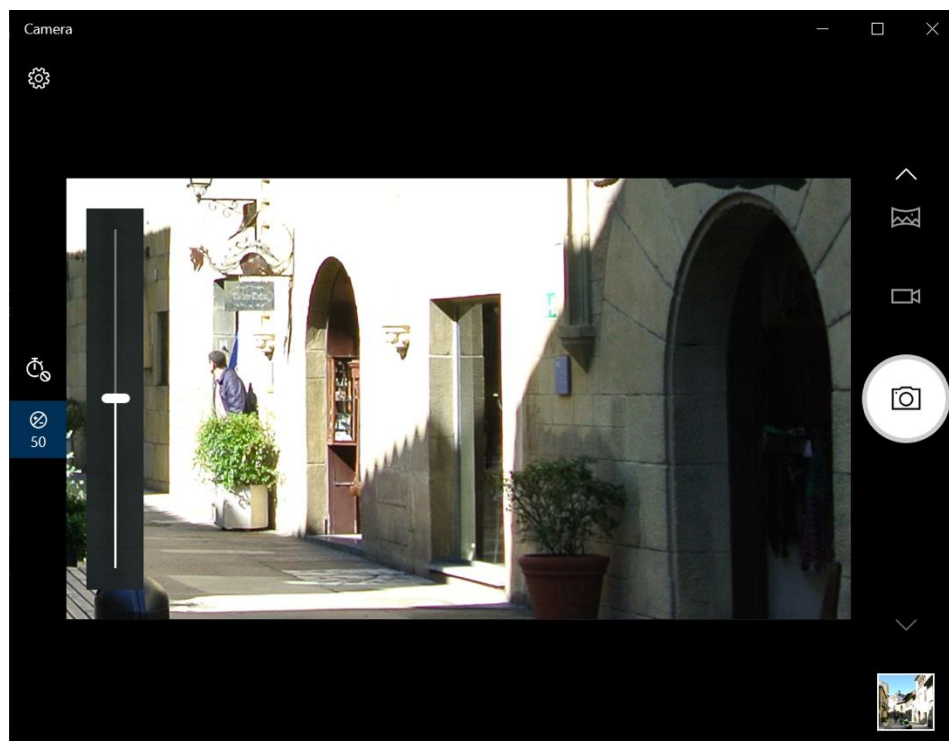


NOTE

- If the  icon does not appear on the left panel, tap  and set the **Pro mode to On.**








- Do the following:
 - Tap and drag the slider upwards to brighten your photo or video.



- Tap and drag the slider downwards to darken your photo or video.

Setting Photo Timer

Tap  to toggle the desired time delay.

- : Self-timer is off
- ₂: 2-second self-timer
- ₅: 5-second self-timer
- ₁₀: 10-second self-timer

Configuring Camera Settings

1. Tap  to enter the Settings menu.



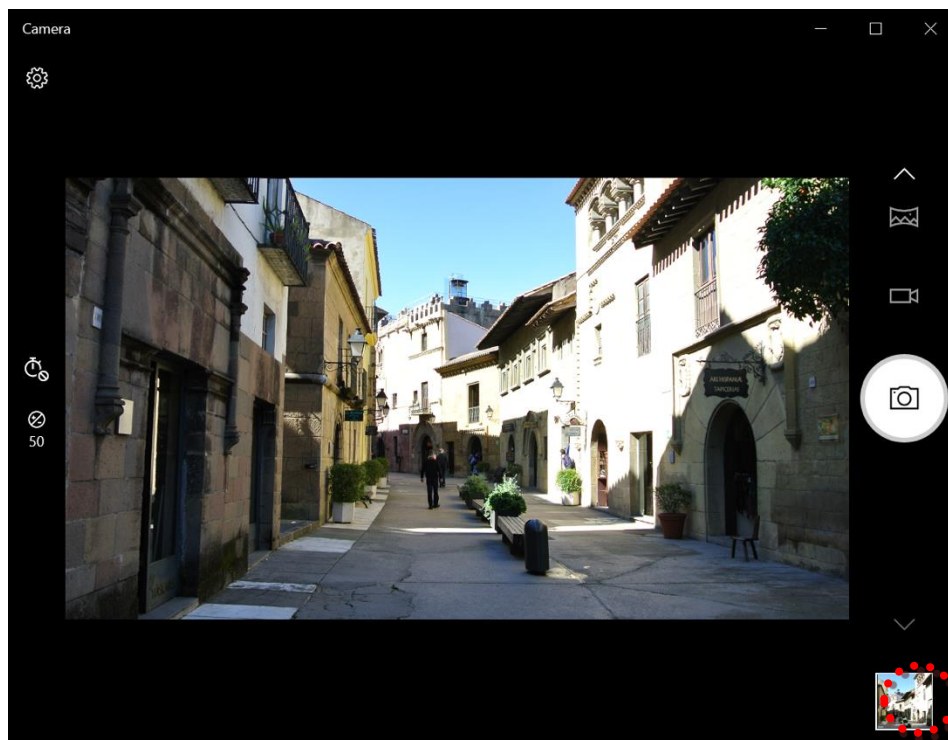
2. Select the desired menu option and setting.

Menu Option	Description
Pro mode	Enable this option to show advanced controls for photos and videos.
Framing grid	Show or hide the framing grid lines.

Menu Option	Description
Photo quality	Set the photo resolution.
Time lapse	When the setting is set to On , the system will keep taking photos until the Camera button is pressed a second time.
Video quality	Set the video quality.
Flicker reduction	Select 50 Hz or 60 Hz to reduce the flickering that may occur when recording video under fluorescent light.
Related settings	Select the related settings that can only be configured in the Settings app.

Viewing Photos/Videos

After taking a photo, recording a video, or shooting a panoramic photo, tap the thumbnail (in the bottom-right corner) to view the most recent photo or video taken.



Swipe right to see other photos or videos in your collection.

Making Connections

This chapter will guide you through installing peripheral devices to maximize the use of your notebook.

Installing the Memory Card

Your notebook supports different types of memory cards to provide faster data transfer.

Supported types: Micro SDHC, Micro SDXC

1. Slide the I/O device cover latch to the unlock position to release the I/O device cover. Then open the I/O device cover.



2. Push the memory card into the memory card slot until it clicks into place.



3. Close the I/O device cover. Then slide the I/O device cover latch to the lock position to secure the I/O device cover in place.

Installing a SIM Card

You can use a SIM card for wireless internet access.



NOTE

- Check the availability of service and data plan rates with your network service provider.
 - Make sure to turn off the notebook before inserting the SIM card.
1. Slide the I/O device cover latch to the unlock position to release the I/O device cover. Then open the I/O device cover.



2. Push a valid SIM card into the SIM card slot until it clicks into place.



3. Close the I/O device cover. Then slide the I/O device cover latch to the lock position to secure the I/O device cover in place.

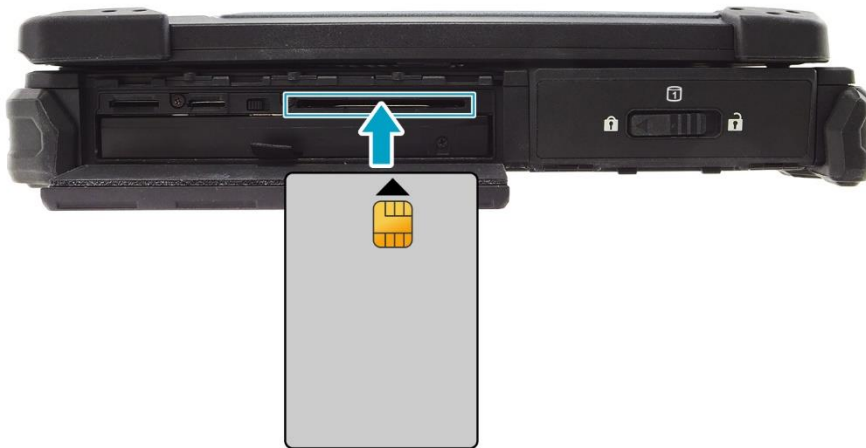
Installing a Smart Card

Your notebook is equipped with a built-in smart card reader that allows you to make secure purchases, store security information, and provide identification and information using a smart card.

1. Slide the I/O device cover latch to the unlock position to release the I/O device cover. Then open the I/O device cover.



2. Insert a smart card into the smart card slot.



3. Close the I/O device cover. Then slide the I/O device cover latch to the lock position to secure the I/O device cover in place.

Installing the PC Cards

Your notebook supports the PCMCIA Type II card or Express Card 54, which can perform a variety of functions.



NOTE

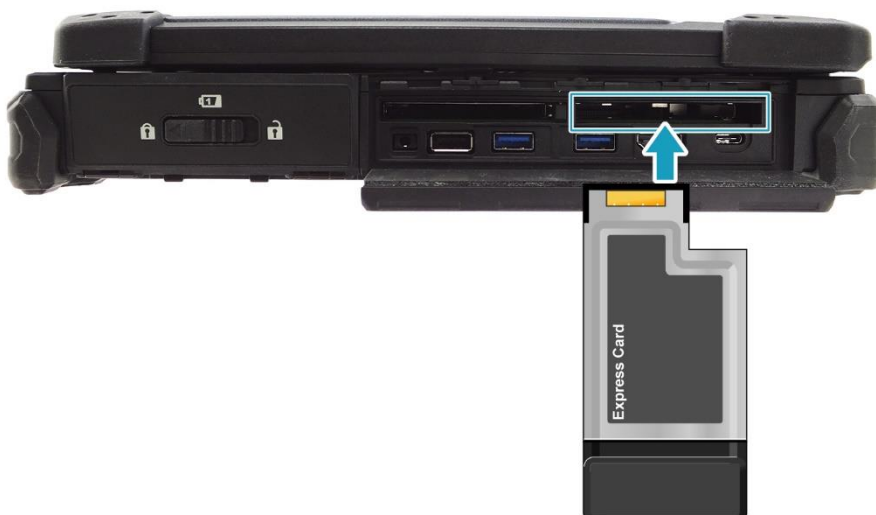
- Refer to the PC Card manual for specific instructions on the card installation.
1. Slide the I/O port cover latch to the unlock position to release the I/O port cover. Then open the I/O port cover.



2. Insert a PC card firmly into the PC card slot until it clicks into the connector.



or



Making Connections

3. Close the I/O port cover. Then slide the I/O port cover latch to the lock position to secure the I/O port cover in place.

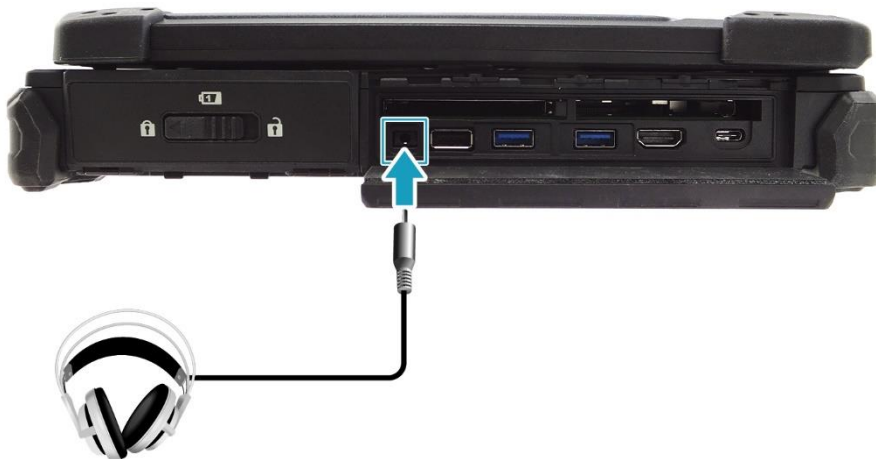
Connecting the Microphone/Headset

Your notebook is equipped with an audio combo jack that enables you to use a headset or microphone.

1. Slide the I/O port cover latch to the unlock position to release the I/O port cover. Then open the I/O port cover.



2. Plug the stereo headphones cable into the audio combo jack of your device.



NOTE

- A headset and microphone are not included in the package for this device. They are sold separately.

Connecting USB Devices

You can connect your notebook to other USB devices, such as a mouse, keyboard, digital camera, printer, or an external storage drive.

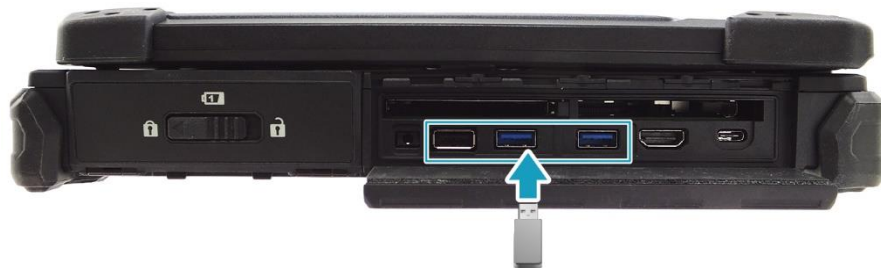
1. Slide the I/O port cover latch to the unlock position to release the I/O port cover. Then open the I/O port cover.



or



2. Connect one end of the USB cable to the USB port of your device.



3. Connect the other end of the cable to the USB device (if necessary).



NOTE

- A USB cable is not included in the package. It is sold separately or it may come with your USB device.

Connecting to External Displays

You can connect an additional display to your notebook by using the HDMI, DisplayPort, or VGA cable.

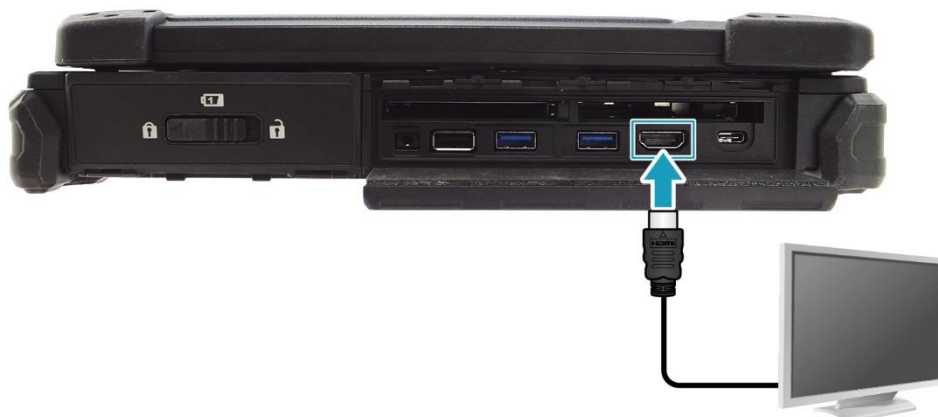
1. Slide the I/O port cover latch to the unlock position to release the I/O port cover. Then open the I/O port cover.

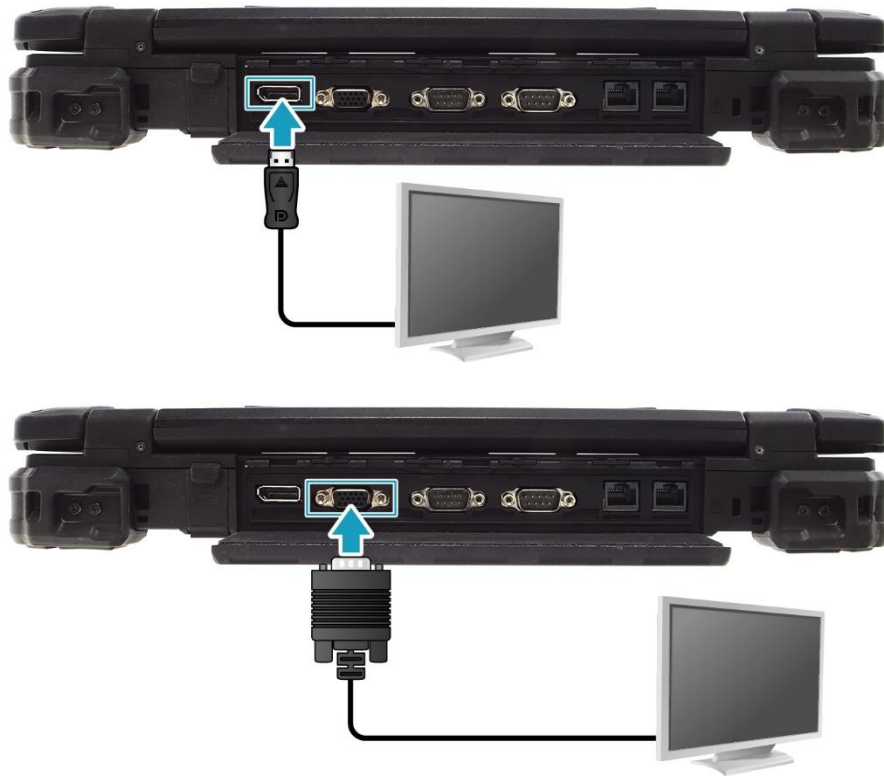


or



2. Connect one end of the HDMI, DisplayPort, or VGA cable to its corresponding port on your device.





3. Connect the other end of the cable to the external display.



NOTE

- An HDMI cable, DisplayPort, or VGA cable is not included in the package for this device. They are sold separately.

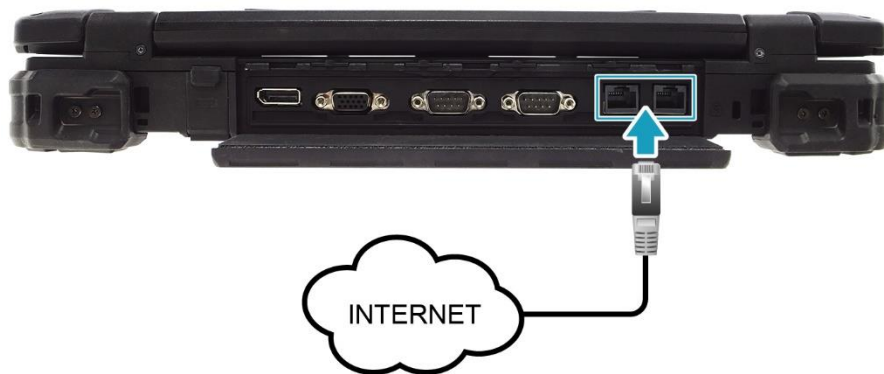
Connecting to a Local Area Network (LAN)

You can connect your notebook to a local area network (LAN) using the Ethernet cable.

1. Slide the I/O port cover latch to the unlock position to release the I/O port cover. Then open the I/O port cover.



2. Connect one end of the Ethernet cable to the RJ-45 port on your notebook.



3. Connect the other end of the Ethernet cable to the router.

 **NOTE**

- An Ethernet cable is not included in the package. It is sold separately.

Connecting to Wireless Connections

You can connect your notebook to a Bluetooth device, wireless local area network (WLAN), or WWAN.



NOTE

- Do not disassemble the bumper. Otherwise, the antenna may be damaged, resulting in poor reception.
- Make sure to slide the RF Signal switch to enable the RF functions.

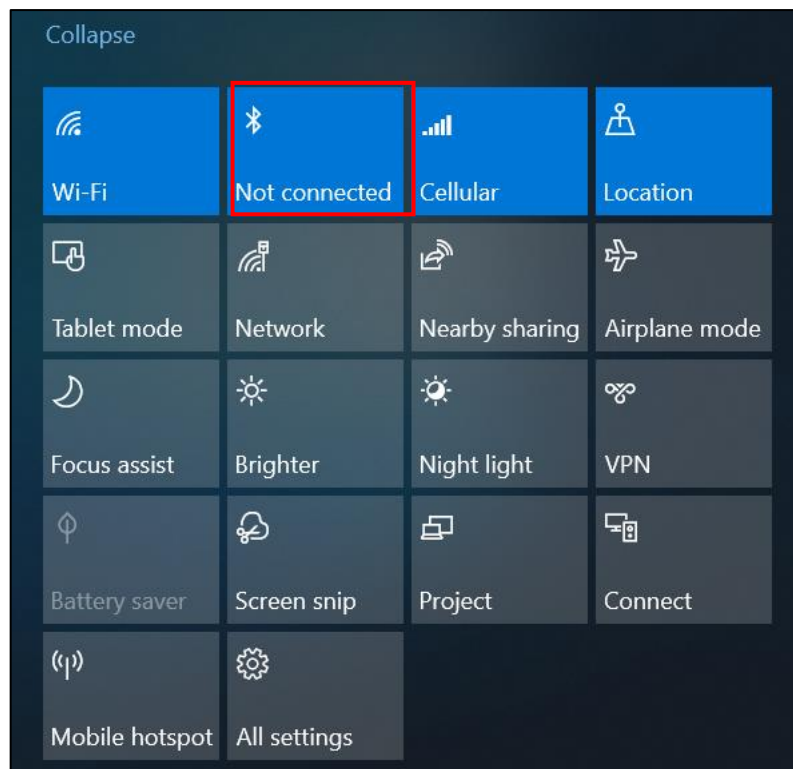


Connecting to a Bluetooth Device

Your notebook can connect and communicate with other Bluetooth-enabled devices. By default, the Bluetooth function is disabled.

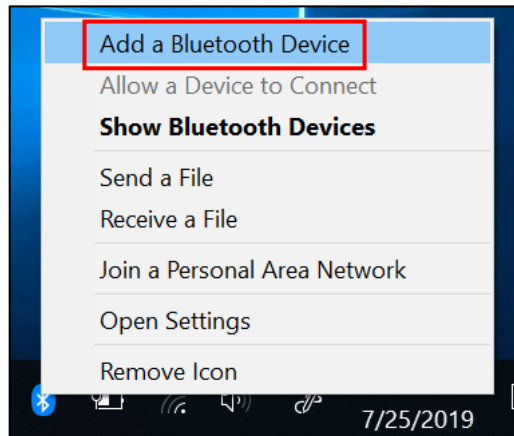
To add a device, follow the steps below:

1. Tap on the system tray. Then, tap **Bluetooth** to enable the function.

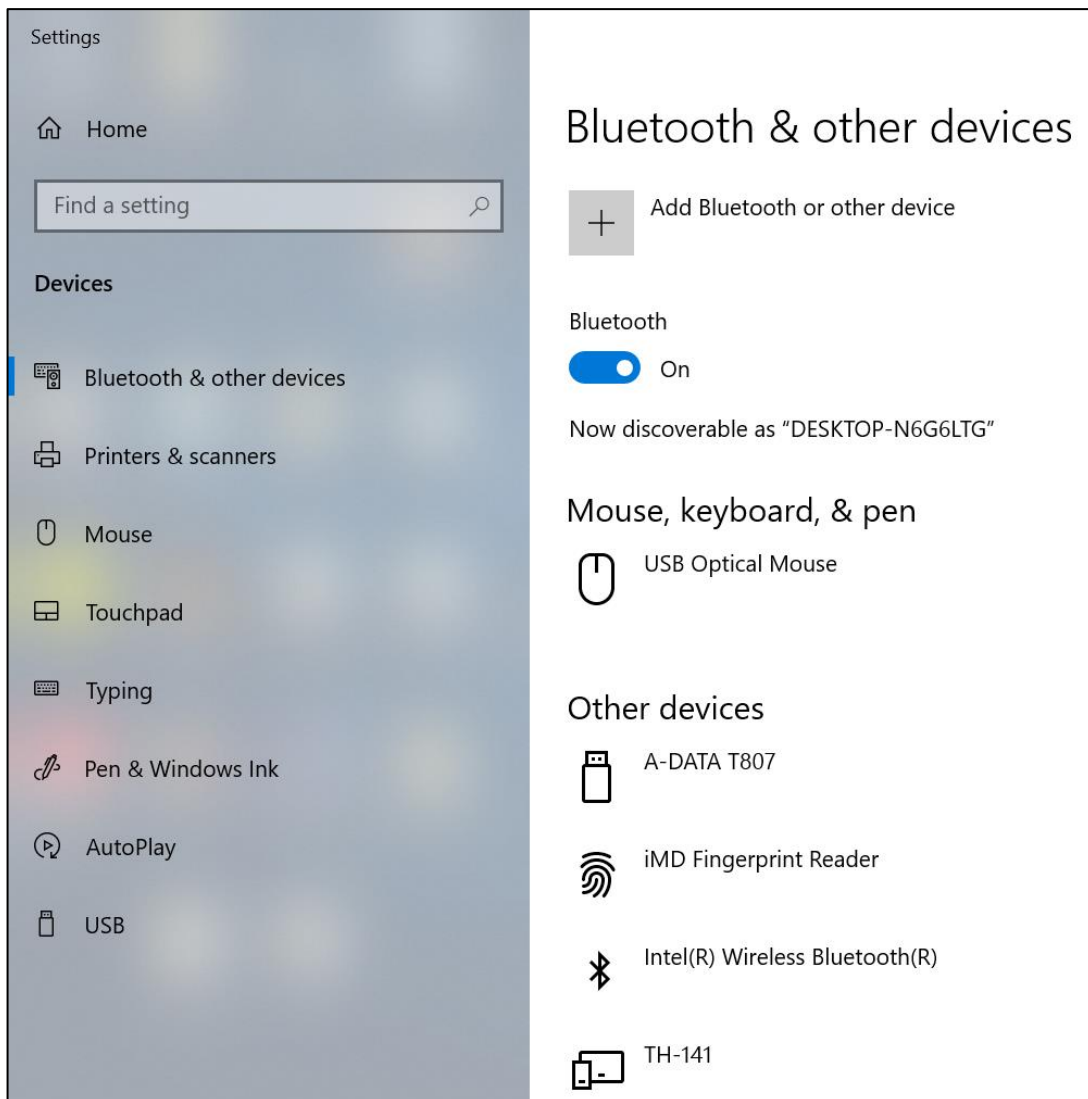


Making Connections

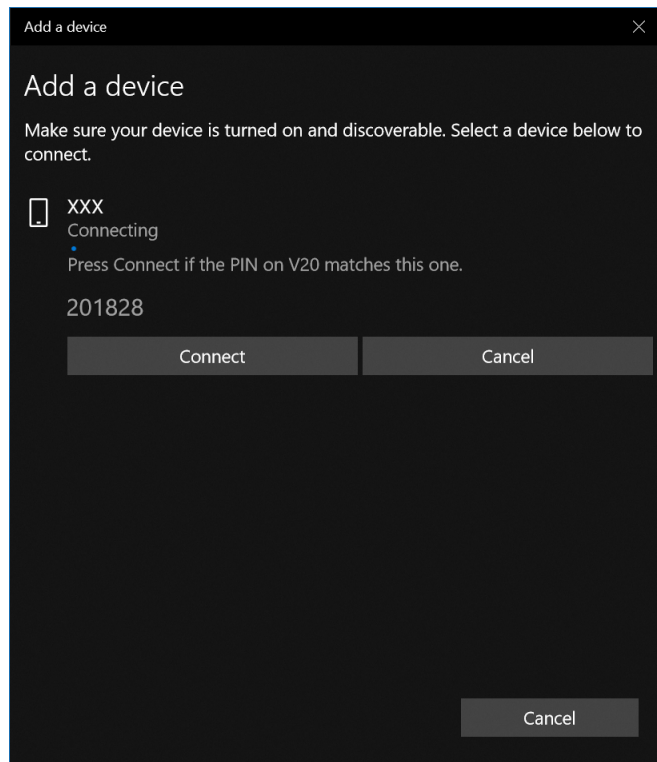
2. Tap the Bluetooth icon (📶) and select **Add a Bluetooth Device**.



3. Tap + and select the kind of device you want to add.



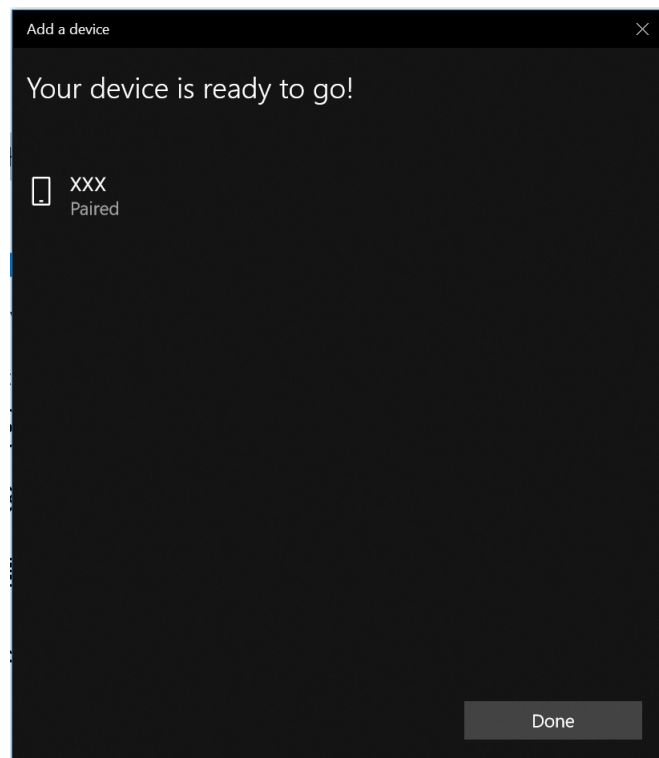
4. Select the device you want to connect. Verify the pairing code on the screen of your device and pairing device match, then tap **Connect** to start pairing.



NOTE

- If the device that you want to add does not appear on the screen, please check if the device is turned on and discoverable.

5. Tap **Done** to complete the pairing connection.





NOTE

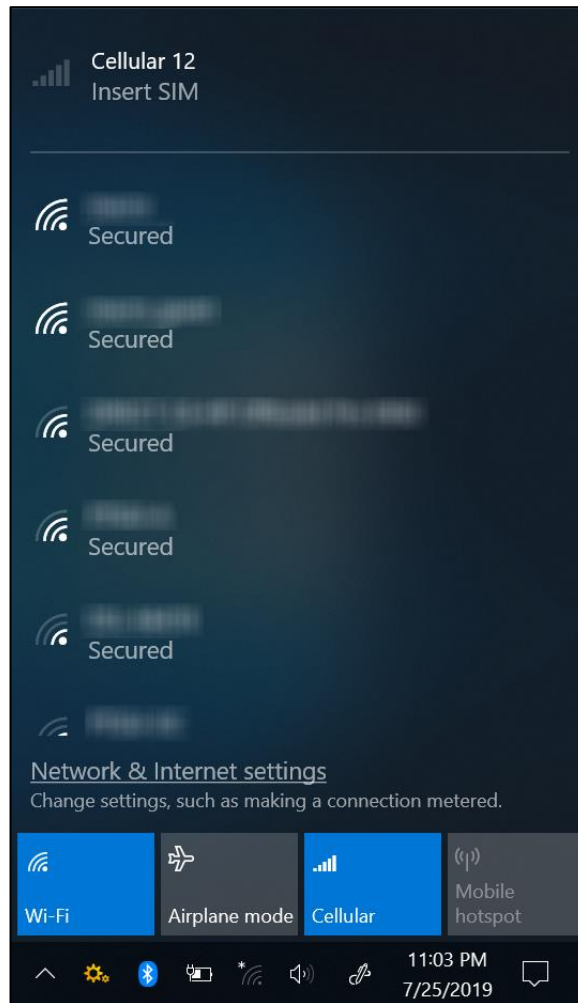
- Most Bluetooth-enabled devices need to be paired with your notebook. The PIN you enter on the notebook must be the same PIN to be entered on the other Bluetooth device.
- Once a partnership has been created, connecting to that device again will no longer require entering the PIN.
- To disconnect from the Bluetooth-enabled device, select the device in the Bluetooth menu and tap **Remove device**.

Connecting to a Wireless Local Area Network


Your notebook comes with a WLAN module. A wireless network can be added either when the network is detected or by manually entering the settings information.

To connect, follow the steps below:

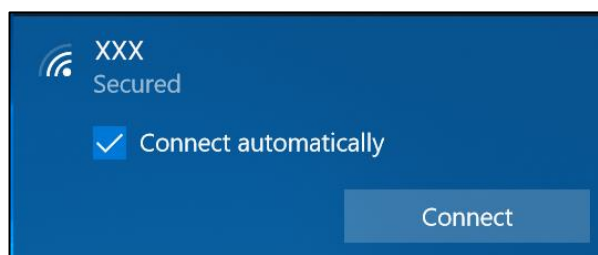
1. Tap the wireless network icon () on the system tray.



TIP

If you do not see the wireless network icon, tap  on the system tray, and tap **Wi-Fi** to enable the Wi-Fi function.

2. Available wireless network connections are displayed. Tap the desired wireless network.



Making Connections

3. Tap **Connect**.

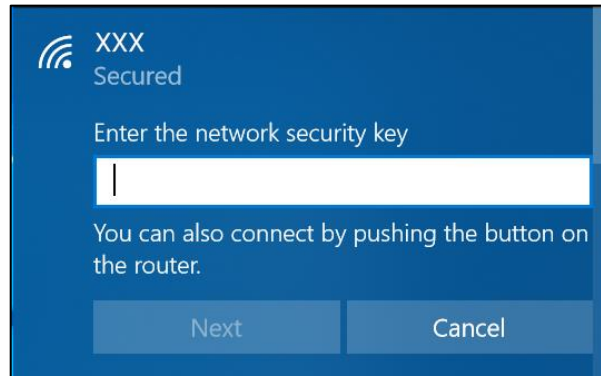
Some networks require a network security key or a password.



TIP

Check the **Connect automatically** box to automatically connect to this network when it is available.

4. Enter the network security key.



5. Tap **Next**. After the connection is established, you can see the wireless network icon (📶) in the Notification area.



NOTE

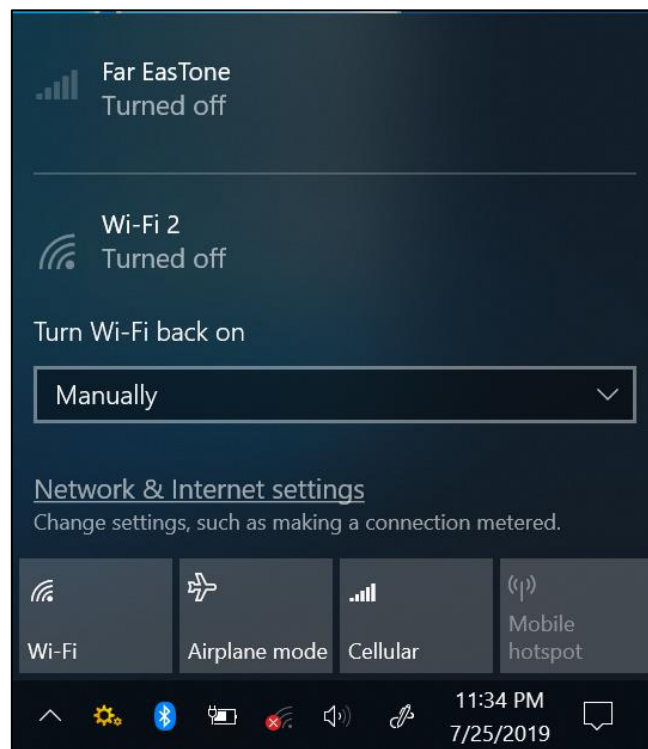
- Wi-Fi access requires service from a wireless service provider. Contact your service provider for more information.
- Actual wireless connectivity will depend on the system configuration. Please contact your dealer for more information.
- To disconnect from the wireless network, select the network in the wireless network list and tap **Disconnect**.

Connecting to a Wireless Wide Area Network (WWAN)

The **WWAN** function allows your notebook to connect to the Internet using mobile or cellular data networks.

To connect, follow the steps below:

1. Insert a valid SIM card into the SIM card slot (refer to page 49).
2. Tap the cellular network icon (📶) on the system tray, as shown below.
Then, tap **Cellular** to enable the Internet connection via mobile data network.




NOTE

- The above screenshot is for illustration purposes only. The “Cellular” option will only appear on a device that is equipped with a LTE module.

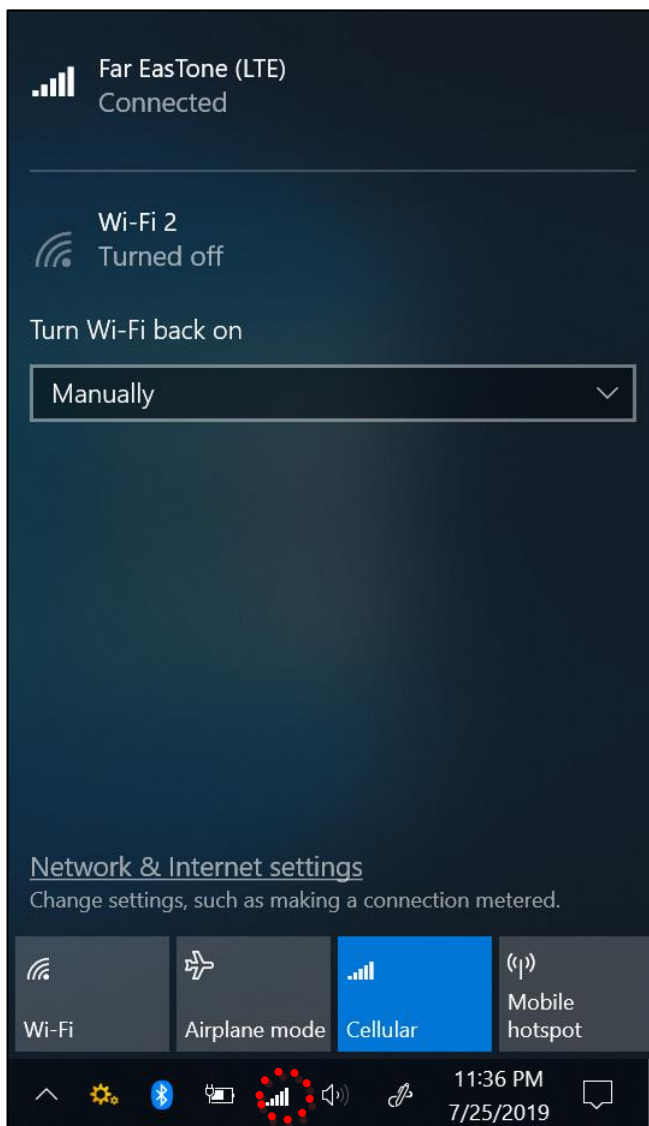


TIP

If you do not see the cellular network icon, tap  on the system tray, and tap **Cellular** to enable the function.

Making Connections

3. After the connection is established, you can see the cellular network icon (📶) in the Notification area.



Using the BIOS Setup Utility

Your notebook has a BIOS setup utility, which allows you to configure important system settings, including settings for various optional functions on the notebook. This chapter explains how to use the BIOS setup utility.

BIOS Setup Menu

The BIOS Setup Utility allows you to configure your notebook's basic settings. When you turn on your notebook, the system reads this information to initialize the hardware so that it can operate correctly. Use the BIOS setup utility to change your notebook start-up configuration. For example, you can change the system's security and power management routines.

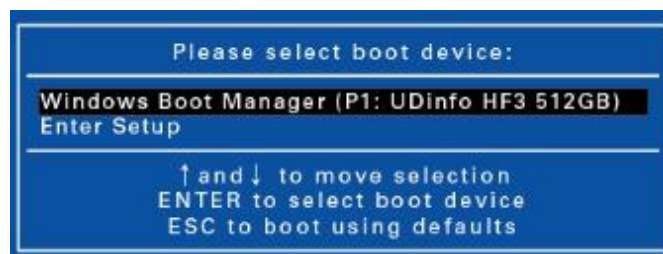
Starting the BIOS Setup Utility

You can only enter the BIOS setup utility as the notebook is booting, i.e., between the time you turn on the notebook and before the Windows interface appears.

If your notebook is already on, shut down your notebook completely (power off), restart it, and then press the **Del** button on the keyboard to enter the setup utility.

Selecting the Boot Device

Restart your notebook and press the **F12** button on the keyboard when the DURABOOK logo appears. Then select the boot device.



Navigating and Entering Information in BIOS

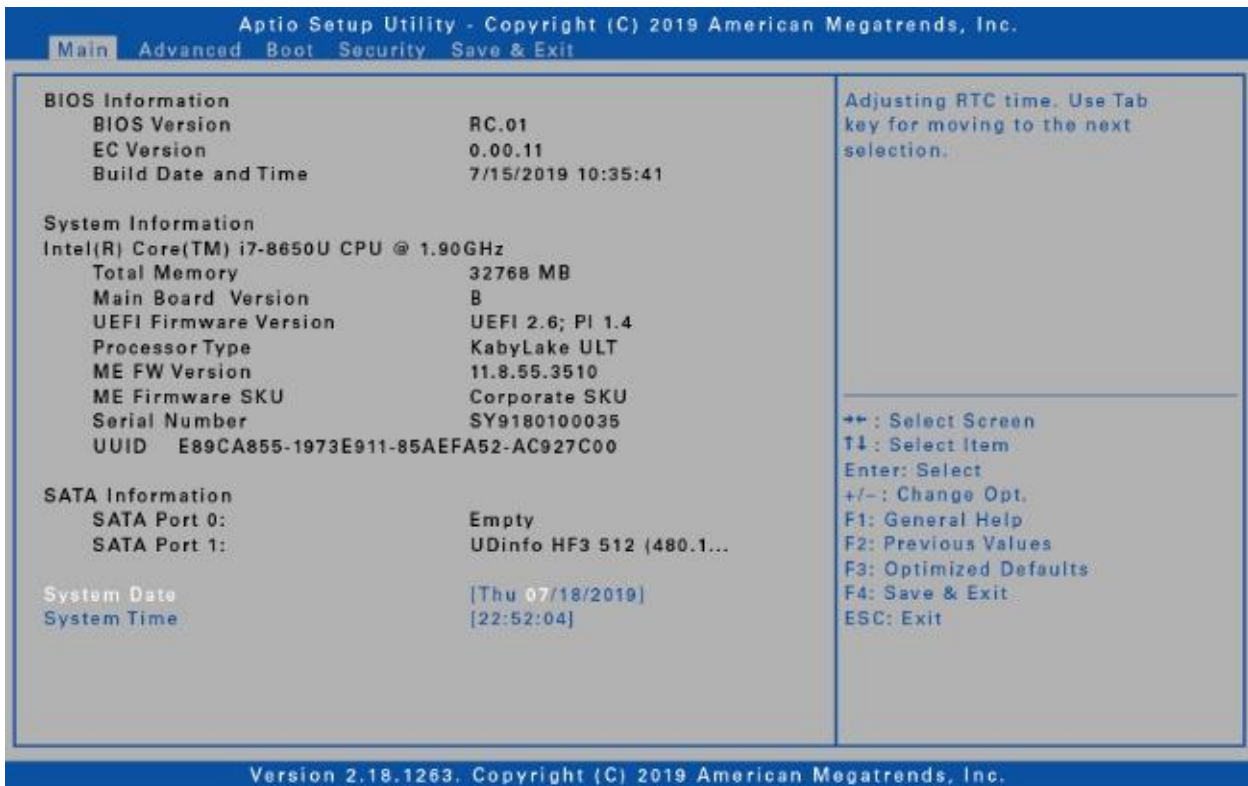
Use the following keys to move between fields and to enter information:

Keyboard	Description
→ ←	Select screen
↑ ↓	Select item
Enter	Select
+ / -	Change Opt.
F1	General Help
F2	Previous Values
F3	Optimized Defaults
F4	Save & Exit
Esc	Exit

Users are allowed to enter new values to replace the default settings in certain fields, and the rest of the fields are specified by system default parameters and cannot be modified by users. Reverse the attribute of the main options and press the **Enter** button to enter into the submenu. Press the **Esc** button to return to the previous configuration page. To display the Help screen at any time, simply press the **F1** button.

Main Menu

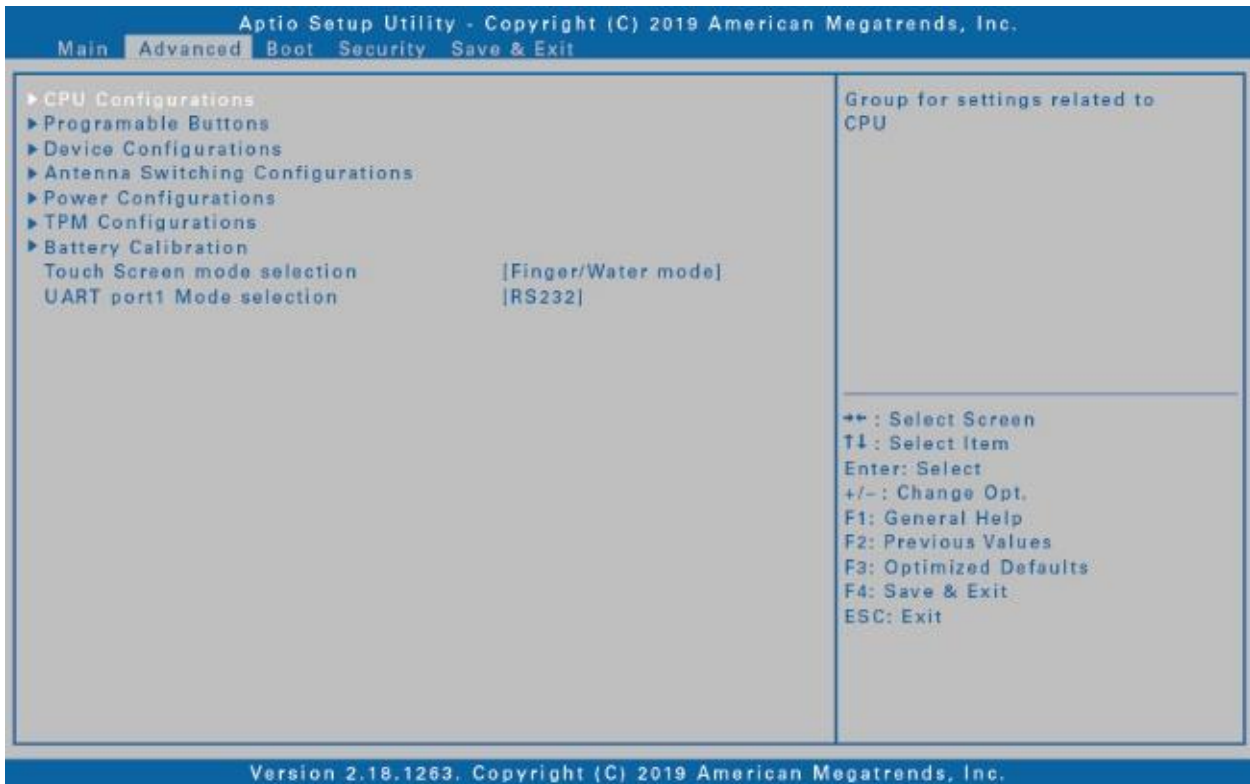
The Main Menu displays the device's system overview information, including the system date and time.



Item	Description
BIOS Information	Displays the BIOS version detected during boot up.
System Information	Displays the CPU type and speed, total memory, mainboard version, UEFI Firmware version, processor type, ME FW version, ME Firmware SKU, serial number, and UUID.
SATA Information	Displays the SATA hard drive information.
System Date	Sets the system date.
System Time	Sets the system time.

Advanced Menu

The Advanced Menu allows you to configure specific system settings.



Item	Description
CPU Configurations	Configures the CPU parameters. For details, refer to CPU Configurations on page 69.
Programmable Buttons	Assigns the function for the P1 button. - Stealth mode button (by default). - Night Vision button. - Disabled (no function). Night Vision mode is supported only in some specific SKUs.
Device Configurations	Configures the device settings, including USB 3.0 ports (1 & 2), USB 2.0 ports (3 & 4), LAN, SD card reader, TPM device, HD audio, finger printer scanner, touch screen, front camera, smart card, wireless LAN, Bluetooth, GPS, and Intel AMT. For details, refer to Device Configurations on page 70.
Antenna Switching Configurations	Configures the external WLAN, GPS, or WWAN antenna settings. For details, refer to Antenna Switching Configurations on page 72.
Power Configurations	Configures the power management settings including keyboard backlight timer, resume on AC power, wake on

Item	Description
	LAN from S3/S4, wake on wireless LAN from S3/S4, and USB 3.0 power share. For details, refer to Power Configurations on page 72.
TPM Configurations	Configures Trusted Computing settings.
Battery Calibration	Performs the battery calibration.
Touch Screen Mode selection	Selects the touchscreen mode. For details, refer to Touch Screen Mode Selection on page 73.
UART port1 Mode selection	Sets the UART port1 mode. This function is supported only in some specific models or SKUs.

CPU Configurations

Select this option to configure the CPU parameters.

Item	State	Description
Intel (VMX) Virtualization Technology	Enabled	Turns on the function. The default value is [Enabled].
	Disabled	Turns off the function.
VT-d	Enabled	Turns on the function. The default value is [Enabled].
	Disabled	Turns off the function.
Intel Trusted Execution Technology	Enabled	Turns on the function.
	Disabled	Turns off the function. The default value is [Disabled].
Intel AMT	Enabled	Turns on the function. The default value is [Enabled].
	Disabled	Turns off the function.

Device Configurations

Select this option to configure the device settings.

Item	State	Description
USB PORT 1	Enabled	Turns on the function.
	Disabled	Turns off the function.
USB PORT 2	Enabled	Turns on the function.
	Disabled	Turns off the function.
USB PORT 3	Enabled	Turns on the function.
	Disabled	Turns off the function.
USB PORT 4	Enabled	Turns on the function.
	Disabled	Turns off the function.
LAN	Enabled	Turns on the function.
	Disabled	Turns off the function.
LAN No. 2	Enabled	Turns on the function.
	Disabled	Turns off the function.
SD Card reader	Enabled	Turns on the function.
	Disabled	Turns off the function.
TPM Device	Enabled	Turns on the function.
	Disabled	Turns off the function.
HD-Audio	Enabled	Turns on the function.
	Disabled	Turns off the function.
Fingerprint Scanner	Enabled	Turns on the function.
	Disabled	Turns off the function.
Touch Screen	Enabled	Turns on the function.
	Disabled	Turns off the function.
Digitizer	Enabled	Turns on the function.
	Disabled	Turns off the function.

Smart Card reader	Enabled	Turns on the function.
	Disabled	Turns off the function.
RFID reader	Enabled	Turns on the function.
	Disabled	Turns off the function.
Front Camera	Enabled	Turns on the function.
	Disabled	Turns off the function.
Wireless LAN	Enabled	Turns on the function.
	Disabled	Turns off the function.
Bluetooth	Enabled	Turns on the function.
	Disabled	Turns off the function.
GPS	Enabled	Turns on the function.
	Disabled	Turns off the function.
WWAN	Enabled	Turns on the function.
	Disabled	Turns off the function.
PCMCIA Card Slot 1	Enabled	Turns on the function.
	Disabled	Turns off the function.
PCMCIA/Express Card Slot 2	Enabled	Turns on the function.
	Disabled	Turns off the function.



NOTE

- By default, all settings are set to [Enabled].

Antenna Switching Configurations

Select this option to configure the external WLAN, GPS, or WWAN antenna settings.

Item	State	Description
Switch to external WLAN antenna	Enabled	Switches to the external WLAN antenna when it is affixed on a docking station.
	Disabled	Turns off the function.
Switch to external GPS antenna	Enabled	Switches to the external GPS antenna when it is affixed on a docking station.
	Disabled	Turns off the function.
Switch to external WWAN antenna	Enabled	Switches to the external WWAN antenna when it is affixed on a docking station.
	Disabled	Turns off the function.



NOTE

- By default, all settings are set to [Disabled].

Power Configurations

Select this option to configure the power management settings.

Item	State	Description
Keyboard Backlight Timer Settings	Keyboard Backlight Off, 1/3/5/10/15/30/60/120 Minutes	Configures the length of time the keyboard backlight will remain on.
Resume on AC power	Enabled	Turns on the function.
	Disabled	Turns off the function.
Wake On LAN from S3/S4	Enabled	Turns on the function.
	Disabled	Turns off the function.
Wake On Wireless LAN from S3/S4	Enabled	Turns on the function.
	Disabled	Turns off the function.
USB 3.0 Power Share	Enabled	Turns on the function.
	Disabled	Turns off the function.

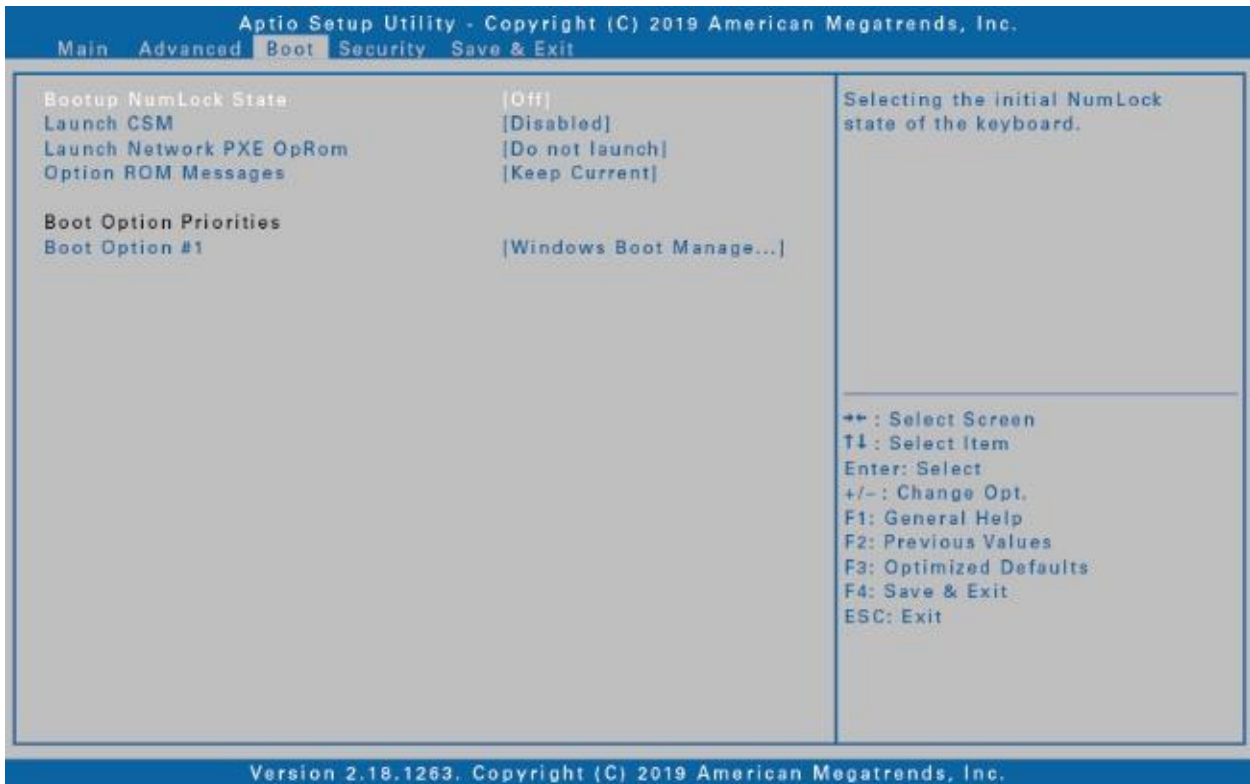
Touch Screen Mode Selection

Select this option to configure the touchscreen mode.

Item	Description
Finger/Water mode	Select this mode for fingertip operation. When the screen gets wet, your finger will be rejected as an input. This mode is set as the default operation mode.
Glove mode	Select this mode if you are wearing gloves.
Stylus mode	Select this mode if you are using the stylus.

Boot Menu

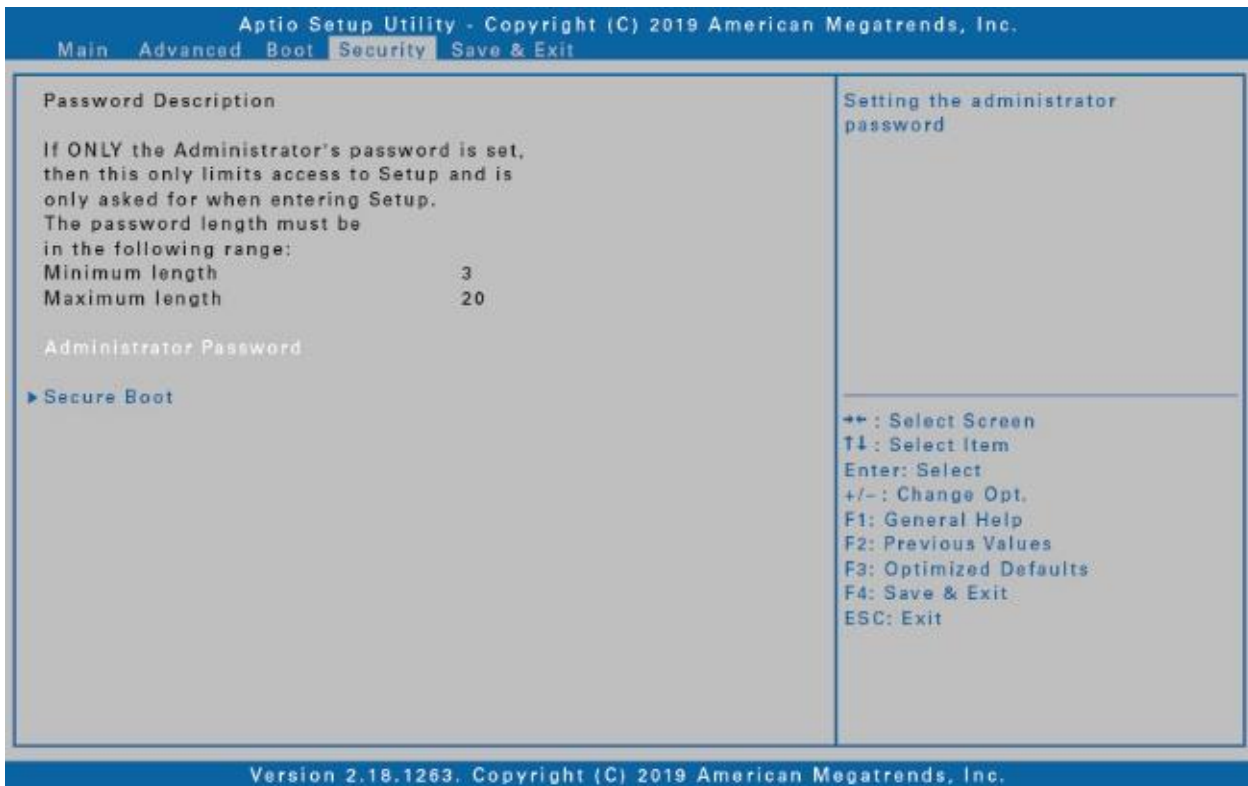
The Boot Menu allows you to configure the boot settings and boot sequence.



Item	Description
Bootup NumLock State	Selects the keyboard NumLock state.
Launch CSM	Enables/Disables CSM support.
Launch Network PXE OpRom	Selects the LAN PXE boot mode.
Option ROM Messages	Sets the display mode for Option ROM messages.
Boot Option Priorities	Sets the system boot order.

Security Menu

The Security Menu allows you to set the Administrator password and configure the Secure Boot settings.



Item	Description
Administrator Password	Sets the administrator password.
Secure Boot	Configures the Secure Boot settings.

Save & Exit Menu

The Save & Exit Menu allows you to save/discard the changes and restore the default values for all setup options before leaving the BIOS Setup Menu.



Item	Description
Save Changes and Reset	Resets the system after saving any changes.
Discard Changes and Reset	Resets the system setup without saving any changes.
Restore Defaults	Restores the default values for all the Setup options.
Boot Override	Displays all available boot options from the Boot Option List.

Maintaining and Caring for Your Notebook

Taking care of your notebook will reduce the risk of damage to your device and ensure that it operates properly.

To help you maintain the quality and function of your notebook, this chapter provides guidelines on how to protect, store, clean, and travel with your device.

Protecting Your Notebook

To safeguard the integrity of the data stored on your notebook as well as the device, please follow the precautions described below:

- Install an anti-virus program to monitor potential viruses that could damage your files.
- Use a Kensington cable lock to protect your notebook against theft. Cable locks are available for purchase from online retailers and in most stores that sell computers.
- To use the lock, loop the lock cable around a stationary object such as a table. Then, insert the lock into the Kensington lock hole and turn the key to secure the lock. Store the key in a safe place.

Storing and Handling Your Notebook

General Storage and Handling Guidelines

- Use your notebook at the recommended temperature—between 0°C (32°F) and 55°C (131°F)—to ensure optimal performance (Actual operating temperature depends on product specifications.)
- Avoid placing your notebook in a location subject to high humidity, extreme temperatures, mechanical vibrations, direct sunlight, or heavy dust. Using your device in extreme environments for long periods of time can result in product deterioration and a shortened product life.
- Do not place heavy objects on top of the notebook as this may damage the display.
- Do not operate in an environment with metallic dust.
- Store and use your notebook on a flat and steady surface. Do not stand the notebook on its side or store it in an upside-down position. The impact from

dropping or an object hitting the device may cause damage.

- Do not cover or block any ventilation openings on the notebook. For example, do not place the notebook on a bed, sofa, rug, or other similar surface. Overheating may occur, which could result in damage to your notebook.
- Keep your notebook away from objects that are vulnerable to heat damage, as the device can become very hot during operation.
- Keep your notebook at least 13 cm (5 inches) away from electrical appliances that can generate a strong magnetic field such as a TV, refrigerator, motor, or a large audio speaker.
- Avoid moving your notebook abruptly from a cold to a warm place. A temperature difference of more than 10°C (18°F) may cause condensation inside the unit, which may damage storage media.

Display and Touchscreen Guidelines

- Use your finger or the included stylus on the touchscreen surface. Using a sharp or metallic object, such as a pen or pencil, may scratch and damage the display, thereby causing errors.
- Use a soft cloth to remove dirt on the display. The touchscreen surface has a special protective coating that prevents dirt from sticking to it. Not using a soft cloth may cause damage to the special protective coating on the touchscreen surface.
- Turn off the notebook power when cleaning the display. Cleaning the display with the power on may cause improper operation.
- Do not use excessive force on the display. Avoid placing objects on top of the display as this may cause the glass to break, thereby damaging the device.
- Expect a slower response time when using the touchscreen at lower temperatures (less than 5°C or 41°F). A normal response time may be restored upon returning to room temperature.
- Refer to Windows online support for instructions on recalibrating the touchscreen display when there is a noticeable problem with the touchscreen function (e.g., improper display resolution or unresponsive touchscreen).
- LCD image sticking occurs when a fixed pattern is displayed on the screen for a prolonged period of time. You can avoid the problem by limiting the amount of static content on the display. It is recommended that you either use a screen saver or turn off the display when it is not in use.
- To maximize the life of the backlight display, allow the backlight to automatically turn off as a result of power management.

Battery Pack Guidelines

- Do not expose the battery to temperatures below 0°C (32°F) or above 46°C (115°F). This may adversely affect the battery pack.
- While the battery may not provide 100% capacity at temperature extremes, its capacity is restored when the battery temperature returns to a normal range, around 20°C (68°F).
- Your battery will last longer during the day if it is used, charged, and stored between 50°F and 86°F (10°C and 30°C).
- Charge the battery nightly where the temperature will remain around 68°F (20°C). Your battery may not last as long throughout the day if you charge it at higher or lower temperatures.
- Allow unrestricted airflow while the device is connected to external power. Make sure that the fan inlet and outlet are unobstructed.
- Avoid exposure to extreme temperatures for long periods as this can shorten battery charge life or damage the battery.
- If your battery is charged in a cold (less than 5°C/41°F) or very warm (greater than 50°C/122°F) environment, it is possible that the battery LED will indicate that the charge has stopped; however, this does not necessarily mean that your battery is fully charged.
- Read and follow all battery precautions in the Safety section.
- Use only batteries of the same kind as replacements.
- Turn the power off before removing or replacing batteries.
- Do not tamper with the batteries.
- Keep batteries away from children.
- Before storing your battery, read and follow the recommendations in the Battery Tips section.
- Dispose of used batteries according to local regulations.
- Recycle if at all possible.

Cleaning Your Notebook

Cleaning the Outside Case

- Disconnect external power and turn off the device.
- Remove the battery.
- Add a small amount of water to a soft cloth and clean the device case. Do not use paper products because they can scratch the surface.
- Wipe off any excess liquid with a soft cloth.
- Reinstall the battery.

CAUTION!

Aerosols, solvents, or strong detergents are not recommended cleaning

solutions and may void your warranty. For system decontamination recommendations, please contact your support representative.

Cleaning the Display

Use a soft, dry cloth. In some cases, you can use a small amount of water to remove streaks or smears. For difficult display cleaning tasks, use a 50/50 mixture of isopropyl alcohol and water. Do not use paper products because they can scratch the screen.

Cleaning the External Power Connector

The external power connector may sometimes be exposed to moisture and/or contamination causing an unreliable connection to the external power source. Clean the connector with a cotton swab dipped in electronics grade isopropyl alcohol.

Cleaning the RJ-45 / USB Connectors

If the connector pins get dirty, clean the connector with a cotton swab dipped in electronics grade isopropyl alcohol.

Traveling With Your Notebook

Before traveling with your notebook, make sure you prepare and follow the precautions described below:

- Back up the data on your hard drive to a flash drive or other storage device. As an added precaution, bring an extra copy of your important data.
- Make sure that the battery pack is fully charged.
- Ensure that your notebook is turned off.
- Confirm that all the connector covers are closed completely to ensure the device's waterproof integrity.
- Disconnect the AC adapter from your notebook and take it with you. Use the AC adapter to power the device and charge the battery.
- Hand-carry your notebook onto an airplane, train, or bus. Do not check it in as luggage.
- If you need to leave your notebook in a car, store it in the trunk to avoid exposing it to excessive heat.
- When going through airport security, do not carry your notebook through the magnetic detector (the device you walk through) or expose it to a magnetic wand (the handheld device used by security personnel). It is recommended that you send the notebook and any flash drives through the X-ray machine (the device where you set your bags).
- If you plan to travel abroad with your notebook, consult your dealer for the appropriate AC power cord for use in your country of destination.

Troubleshooting

This chapter advises you on what actions to take when solving common computer problems that may be caused by issues with hardware or software.

Preliminary Checklist


Here are the initial steps you should follow before taking further action when encountering any problem:

1. Try to identify and isolate which part of the notebook is causing the problem.
2. Make sure that you turn on all peripheral devices before turning on the notebook.
3. If you are having trouble with an external device, make sure that the cable connections are correct and secure.
4. Make sure that the configuration information is properly set in the BIOS Setup program.
5. Ensure that all the device drivers are correctly installed.
6. Make note of your observations. Are there any messages on the screen? Do any indicators light up? Do you hear any beeps? Detailed descriptions are useful to the service personnel when you need to consult someone for assistance.
7. If any problem persists after you follow the instructions in this chapter, contact an authorized dealer for help.

Solving Common Problems

Battery Problems

The battery does not charge

- To prevent possible damage to the battery, the device does not allow the battery to charge if the internal temperature of the battery gets too low (< 5°C or < 41°F) or too high (> 50°C or > 122°F). If possible, charge the battery in a location with a moderate temperature of around 20°C (68°F).
- If possible, turn off the device while the battery is charging.
- If the battery is new or has been stored for a week or more, follow this procedure:
 1. Make sure the device is turned off.
 2. Remove the battery.
 3. Connect the AC adapter to the device and an AC wall outlet, and then turn on the device by pressing the  button.
 4. Let the device complete the boot process. Then reinstall the battery.

Troubleshooting

5. Allow the system to remain idle for one hour with the AC adapter connected to the device.
6. The Battery Power LED lights up when the battery starts charging.
7. If the battery still fails to start charging after an hour, remove the battery, wait several seconds, and then install it again.
8. If the battery does not begin charging within several minutes, return the unit for service.

The battery takes longer than seven hours to charge.

- Under moderate temperatures, about 20°C (68°F), the device's battery takes approximately 4 to 5 hours to completely charge.
- As the battery temperature approaches the end of its temperature range (5°C/41°F to 50°C/122°F), it may take longer to charge the battery.

The battery doesn't hold charge for very long.

- Calibrate the battery. If your battery is new or has not been used for several weeks, calibrating the battery accurately sets the gas gauge.
- As your battery ages, its maximum capacity naturally decreases and even the best maintained batteries eventually need to be retired. Consider replacing the battery if you are not getting the usage you need from it.
- To meet ENERGY STAR® requirements, Wake on LAN is enabled by default. If running on battery power, this may decrease battery run-time. To change Wake on LAN settings, open the Device Manager, Network Adapters and select the LAN device. Open the device Properties and select Power Management. Disable the Wake on LAN setting by unchecking this option. Allow this device to wake the computer.

The gas gauge isn't full after charging the battery.

- This may indicate that the charging process terminated prematurely.

The gas gauge reads "full," but the charging LED is still lit.

- If you charge your battery daily, rely on the gas gauge reading to determine battery capacity. The charging process may continue even if the gas gauge reads full. External power can be removed because the battery is virtually full.

My battery seems to have less and less capacity.

- If your battery is new, or if you are using it for the first time, you will need to calibrate it (see Battery Calibration) prior to using it.
- As your battery ages, the maximum capacity that it can hold naturally decreases and even the best maintained batteries eventually need to be retired. Consider replacing the battery if you are not getting the usage you need from it.

Bluetooth Wireless Transmission Problems

I cannot connect to another device with Bluetooth wireless technology.

- Ensure that you have activated the Bluetooth feature on both devices.
- Make sure that the distance between the two devices is within the acceptable limit and that there are no walls or other obstructions between the devices.
- Confirm that the other device is not in “Hidden” mode.
- Verify that both devices are compatible.

Display Problems

The display performance is slow.

- The temperature may be too cold. Move the device to a warmer operating environment.

The underlined, inverse, and hypertext characters are difficult to read on the screen.

- Right click on the Windows Desktop, select Personalize, then Colors to change the color and style of your Windows.

I changed my display resolution, but I see no difference on the screen.

- Select **Start > Power > Restart**.

Nothing happens when I try to use the stylus on my touch screen.

- If you cannot select objects accurately with the stylus, you may need to calibrate the touch screen.

The touch screen doesn't respond after a suspend.


- The touch screen needs a few seconds to work after a suspend. Wait a moment and try again.

Hard Disk Problems

The hard disk will not spin up, so the device can't boot up.

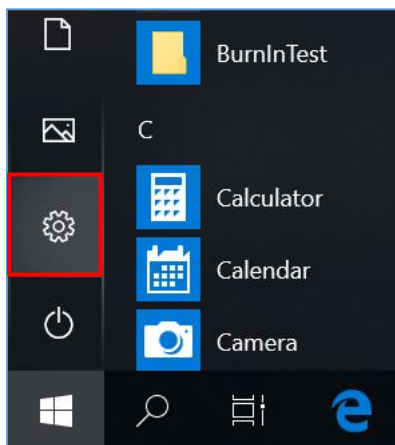
- This occurs if the unit is exposed to extremely low temperatures. This is not a hardware failure associated with the hard disk. The integrated hard disk drive heater will warm the drive to a safe operating temperature.

The device does not startup properly.

- Make sure you remove any USB drives from the unit before you start it.
- Connect the AC adapter to charge the battery if it is not charged.
- If the battery does not begin charging, perform the following:
 1. Remove the battery.
 2. Connect the AC adapter.
 3. Turn on the device by pressing the  button.
 4. Reinstall the battery. The battery LED is a steady orange while the battery is charging.

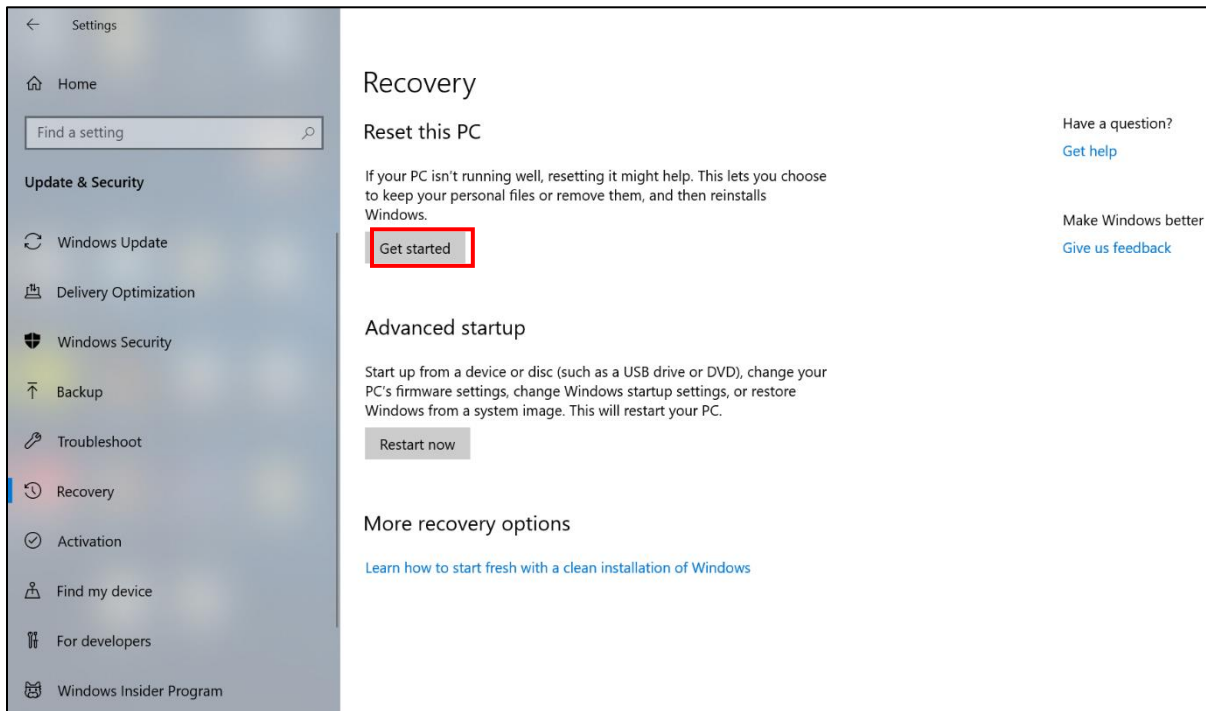
Hard disk recovery process on Win10

1. Select **Start**  > **Settings** .



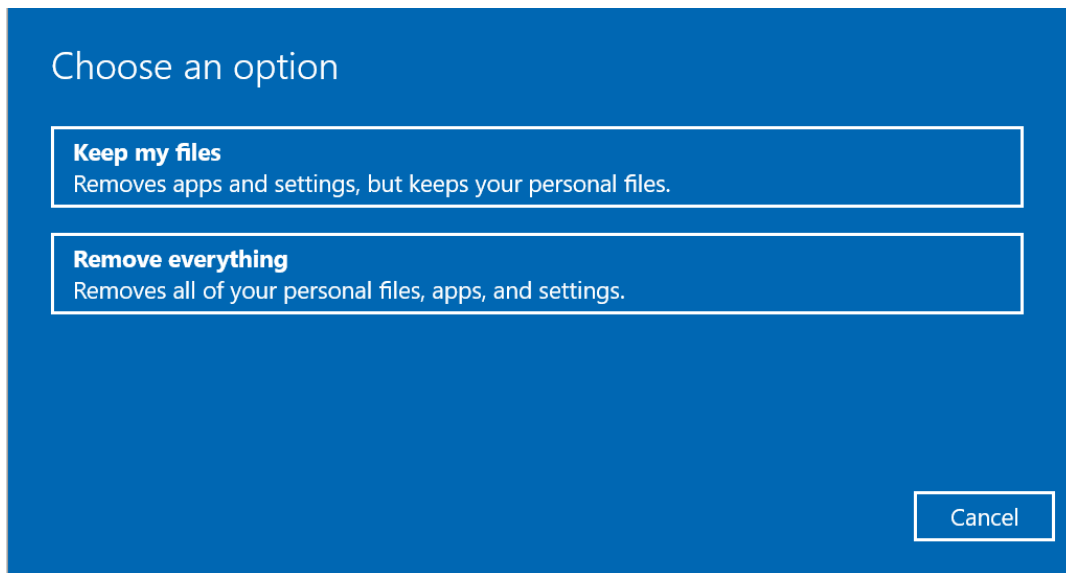
2. Select **Recovery** under **Update & Security**.

3. Under **Reset this PC**, tap **Get started**.



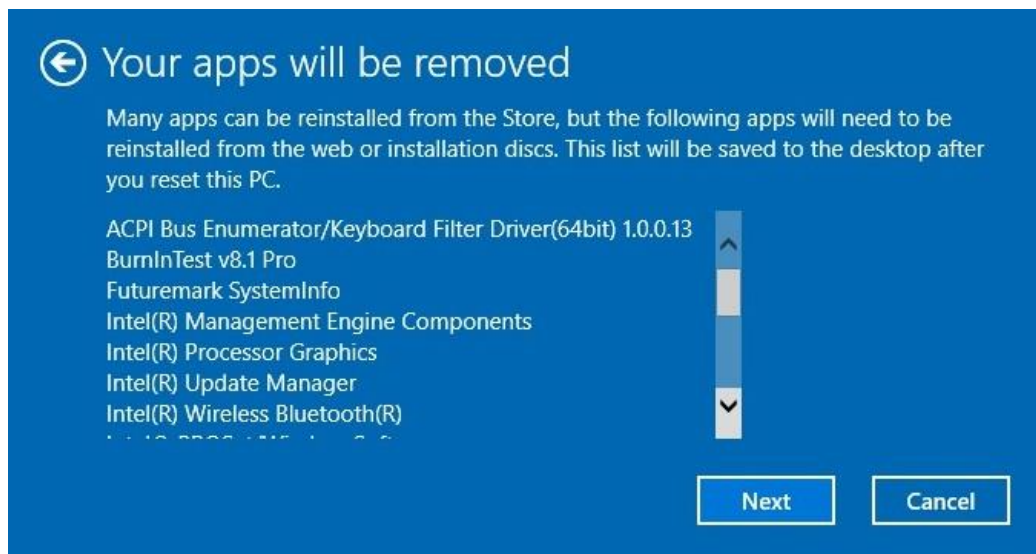
4. Select one of the two options depending on your needs.

- **Keep my files** (requires around 3 to 4hr)
- **Remove everything** (requires around 5 to 6hr)



Troubleshooting

5. You are informed of the programs that will be removed. Tap **Next** to proceed.



6. Tap **Reset** to start resetting.



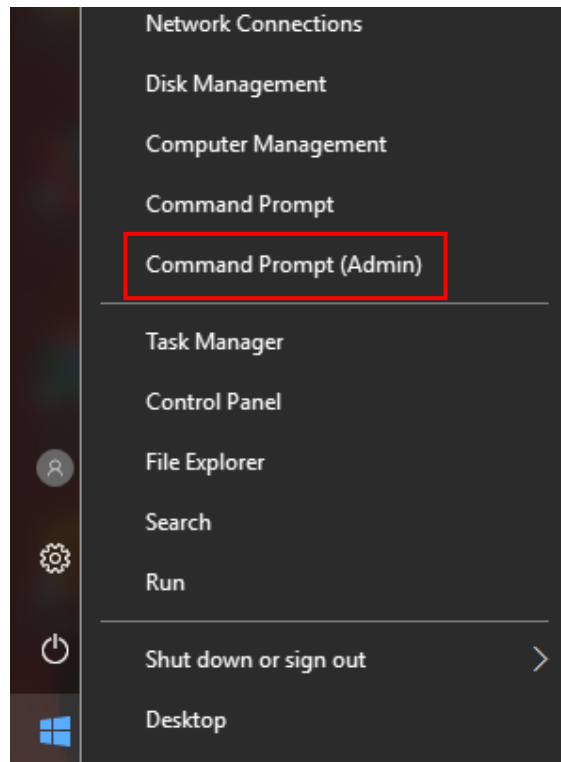
NOTE

- If you see a message as shown below that means **WinRE** (Windows Reset) is disabled.



7. To enable resetting Windows, follow the steps below:



- a. Hover mouse over the **Start**  menu.
- b. Right click and select **Command Prompt (Admin)** from the pop-up menu.




- c. Enter the following command: `Reagentc /enable`
- d. Press **Enter**. Wait until you see the "Operation Successful" status on the screen.
- e. Follow steps 1 to 7 to reset your device.

Other Problems

The device won't turn on.

- Make sure a fully charged battery is properly installed.
- Connect external power to charge the battery if it is not charged.
- If you are using the AC adapter, check the electrical outlet you are using to make sure it is working properly.
- If the device does not turn on, reset the device by holding down the  button for at least ten seconds, release it, and then press the  button again.

The device won't turn off.

1. Select **Start > Power > Restart**.
2. If that does not work, press **Ctrl + Alt + Del** and then select **Task Manager**.
3. If any programs are open, use your arrow keys to highlight each one and select End task. Repeat this until all programs are closed.
4. If that still does not work, press and hold the  button for approximately ten seconds and then release it.

The device doesn't make any sounds, even during boot-up.

- You may have enabled Stealth Mode. Disable Stealth mode.

Appendix

Copyright

Copyright© 2019. All rights reserved.

No part of this user manual may be transmitted, stored in a retrieval system, or translated into any language or computer language, in any form or by any means, without the prior written permission of the manufacturer. Information is subject to change without prior notice.

Specifications

Model Name	Z14I
DURABILITY	<ul style="list-style-type: none"> – MIL-STD 810G certified (Drop, Shock, Vibration, Rain, Dust, Altitude, Freeze/Thaw, High/Low Temperature, Temperature Shock, Humidity, Explosive Atmosphere, Solar Radiation, Salt Fog, Fungus Resistance) – MIL-STD-461G certified (Conduction, Radiation, Conducted Susceptibility, Radiated Susceptibility) – ANSI/ISA 12.12.01-2000, Class I, Division 2 – 6' drop 26 faces – IP 65 certified – Aluminum-magnesium alloy chassis – Port covers – Removable quick-release battery and storage drive – Sunlight readable display – Optional swappable battery technology
OPERATING SYSTEM	Windows® 10 Pro 64-bit
PROCESSORS	<ul style="list-style-type: none"> – Intel® Core™ i7-8650U vPro™ (8th Gen) 1.9GHz processor with Turbo Boost Technology up to 4.2GHz, 8MB cache – Intel® Core™ i7-8550U(8th Gen) 1.8GHz processor with Turbo Boost Technology up to 4.0GHz, 8MB cache – Intel® Core™ i5-8350U vPro™ (8th Gen) 1.7GHz processor with Turbo Boost Technology up to 3.6GHz, 6MB cache – Intel® Core™ i5-8250U (8th Gen) 1.6GHz processor with Turbo Boost Technology up to 3.4GHz, 6MB cache

Appendix

GRAPHICS	Intel® UHD Graphics 620
MEMORY	2 slots 8GB up to 32GB (2400MHz DDR4)
STORAGE	500GB HDD <ul style="list-style-type: none"> – Optional 1TB HDD – Optional 256GB/512GB/1TB SSD – Optional OPAL 2.0 SSD or FIPS 140-2 – Optional 2nd storage (SSD)
DISPLAY	14.0" FHD (1920 x1080) <ul style="list-style-type: none"> – 1000 nits DynaVue® sunlight readable display with capacitive multi-touch screen – User selectable touch mode for Finger/Water, Glove, or Stylus programmable function
AUDIO	<ul style="list-style-type: none"> – Integrated microphone – Intel® High Definition Audio Compliant – Integrated speaker x 2 – Keyboard volume and mute controls
CAMERA	Integrated 2.0 MP web-cam with shutter design
KEYBOARD & INPUT	<ul style="list-style-type: none"> – 2 user-definable keys (P1/P2) – RF signal slide-switch – Standard membrane keyboard with optional LED backlight membrane keyboard
COMMUNICATONS	<ul style="list-style-type: none"> – Integrated 10/100/1000 Ethernet – Intel® Dual Band Wireless AC 9260 (802.11a/b/g/n/ac) – Bluetooth® V5.0 – Optional dedicated GPS module (UBLOX-NEO-M8N) – Optional 4G LTE multi-carrier mobile broadband – Optional RF antenna pass-through for GPS, WWAN, and WLAN
SECURITY	<ul style="list-style-type: none"> – Intel® vPro™ Technology (per CPU options) – TPM 2.0 – NIST BIOS compliant – Easy removable SSD – Smart card reader default – Stealth mode – Kensington lock – Night vision mode – Optional fingerprint scanner – Optional RFID reader

I/O INTERFACES	<ul style="list-style-type: none"> - USB 3.1 (type A) x 2 - USB 3.1 (type C) x 1 - USB 2.0 (type A) x 1 - Audio in/out (combo jack) x 1 - microSD card (microSDXC) x 1 - 10/100/1000 Ethernet (RJ-45) x 2 - VGA port (D-sub,15-pin) x 1 - DP port x 1 - HDMI port (type A) x 1 - Serial port (RS-232 : D-sub,9-pin) x 2 - Docking connector (41-pin Pogo) x 1 - SIM card x 1 - Smart card reader x 1 - DC-In jack x 1 - PCMCIA Type II x 1 - ExpressCard 54 x 1 or PCMCIA Type II x 1 - Optional RF antenna pass-through for GPS, WWAN, and WLAN
MEDIA BAY (One Option Only)	<ul style="list-style-type: none"> - Optional DVD super Multi - Optional 2nd battery - Optional 2nd storage (SSD)
POWER	<p>AC adapter : 100-240V, 50Hz-60Hz, 90W</p> <p>Main battery Li-Ion, 10.8V, 7800mAh, 15 hours</p> <ul style="list-style-type: none"> - Optional 2nd battery Li-Ion 10.8V, 4700mAh - Optional bridge battery : 5 minutes swap time
ENVIRONMENT	<ul style="list-style-type: none"> - Temperature <ul style="list-style-type: none"> • Operating : -20°C ~ 60°C • Storage : -51°C ~ 71°C / -60°F ~ 160°F - Humidity : 5% ~ 95%
DIMENSION & WEIGHT	<ul style="list-style-type: none"> - 356 mm (L) x 280 mm (W) x 50 mm (H) - 3.6 kg
WARRANTY	3-year limited warranty standard

**NOTE**

- Specifications are subject to change without any prior notice.

Regulatory Statement

Federal Communications Commission

Statement

This equipment has been tested and found to comply with the limits for a Class B digital device, pursuant to Part 15 of the FCC Rules. These limits are designed to provide reasonable protection against harmful interference in a residential installation. This equipment generates, uses, and can radiate radio frequency energy and, if not installed and used in accordance with the instructions, may cause harmful interference to radio communications. However, there is no guarantee that interference will not occur in a particular installation. If this equipment does cause harmful interference to radio or television reception, which can be determined by turning the equipment off and on, the user is encouraged to try to correct the interference by one or more of the following measures:

- Reorient or relocate the receiving antenna.
- Increase the separation between the equipment and the receiver.
- Connect the equipment into an outlet on a circuit different from that to which the receiver is connected.
- Consult the dealer or an experienced radio/TV technician for help.

FCC Caution: Any changes or modifications not expressly approved by the party responsible for compliance could void the authority to operate equipment.

This device and its antenna must not be co-located or operating in conjunction with any other antenna or transmitter.

This equipment complies with FCC RF radiation exposure limits set forth for an uncontrolled environment for body-worn configuration in direct contact to the phantom.

Declaration of Conformity

This device complies with part 15 of the FCC rules. Operation is subject to the following conditions:

- This device may not cause harmful interference
- This device must accept any interference received, including interference that may cause undesired operation.

This equipment complies with FCC radiation exposure limits set forth for an uncontrolled environment.

This equipment should be installed and operated with minimum distance 20cm between the radiator & your body.

Battery Disposal

THIS PRODUCT CONTAINS A LITHIUM-ION OR NICKEL-METAL HYDRIDE BATTERY. IT MUST BE DISPOSED OF PROPERLY. CONTACT LOCAL ENVIRONMENTAL AGENCIES FOR INFORMATION ON RECYCLING AND DISPOSAL PLANS IN YOUR AREA.

WARNING EXPLOSION HAZARD

Class I, Division 2, Groups A, B, C, D, T Code T5

Class I, Zone 2, Groups IIC, T5

WARNING - EXPLOSION HAZARD - SUBSTITUTION OF COMPONENTS MAY IMPAIR SUITABILITY FOR CLASS I, DIVISION 2. And,

AVERTISSEMENT - RISQUE D'EXPLOSION - LA SUBSTITUTION D'E COMPOSANTS PEUT ENDRE CE MATERIEL INACCEPTABLE POUR LES EMPLACEMENTS DE CLASSE I, DIVISION 2.

WARNING: TO PREVENT IGNITION OF A HAZARDOUS ATMOSPHERE, BATTERIES MUST ONLY BE CHARGED IN AN AREA KNOWN TO BE NON-HAZARDOUS. And,

AVERTISSEMENT- RISQUE D'EXPLOSION- AFIN D'EVITER TOUT RISQUE D'EXPLOSION, S'ASSURER QUE L'EMPLACEMENT EST DESIGNÉ NON DANGEREUX AVANT DE CHANGER LA BATTERIE.

WARNING - EXPLOSION HAZARD - DO NOT CONNECT OR DISCONNECT WHILE CIRCUIT IS LIVE UNLESS AREA IS KNOWN TO BE NON-HAZARDOUS. And,

AVERTISSEMENT - RISQUE D'EXPLOSION. NE PAS BRANCHER OU DÉBRANCHER TANT QUE LE CIRCUIT EST SOUS TENSION, À MOINS QU'IL NE S'AGISSE D'UN EMPLACEMENT NON DANGEREUX.

Battery: Japone Technology Inc., Z14AK-Main, Z14AK-Bridge, S14AK-2nd,
P/N : Z14

CLASS 1 LASER PRODUCT

LASERSCHUTZKLASSE 1 PRODUKT TO EN60825

CAUTION THIS APPLIANCE CONTAINS A LASER SYSTEM AND IS CLASSIFIED AS A "CLASS 1 LASER PRODUCT." TO USE THIS MODEL PROPERLY, READ THE INSTRUCTION MANUAL CAREFULLY AND KEEP THIS MANUAL FOR FUTURE REFERENCE. IN CASE OF ANY TROUBLE WITH THIS MODEL, PLEASE CONTACT YOUR NEAREST "AUTHORIZED SERVICE STATION." TO PREVENT DIRECT EXPOSURE TO THE LASER BEAM, DO NOT TRY TO OPEN THIS ENCLOSURE.

PRODUIT LASER DE CLASSE 1

LASERSCHUTZKLASSE 1 PRODUKT TO EN60825

ATTENTION : CE PRODUIT CONTIENT UN SYSTÈME LASER ET EST CLASSÉ EN TANT QUE « PRODUIT LASER DE CLASSE 1 ». POUR UTILISER CE MODÈLE CORRECTEMENT, LISEZ LE MANUEL D'INSTRUCTIONS ATTENTIVEMENT ET CONSERVEZ-LE POUR RÉFÉRENCE FUTURE. EN CAS DE PROBLÈMES AVEC CE MODÈLE, VEUILLEZ CONTACTER VOTRE « STATION DE SERVICE AUTORISÉE » LA PLUS PROCHE. POUR ÉVITER UNE EXPOSITION DIRECTE AUX FAISCEAUX LASER, N'ESSAYEZ PAS D'OUVRIER CE BOÎTIER.

ANNEX IV

Symbol for the marking of electrical and electronic equipment

The symbol indicating separate collection for electrical and electronic equipment consists of the crossed-out wheeled bin, as shown below. The symbol must be printed visibly, legibly and indelibly.



CAUTION FOR ADAPTER

THIS NOTEBOOK IS FOR USE WITH DEDICATED AC ADAPTER.

- Ensure you connect the power cord to a socket-outlet with earthing connection.
- The NB must be powered by using UL62368-1/ UL60950-1 Listed power adapter, rated 19Vdc, 4.74A minimum.

– WARNING!

To reduce potential safety issues, only the AC adapter provided with the product, a replacement AC adapter provided by Twinhead, or an AC adapter purchased as an accessory from Twinhead should be used with the product.

AVERTISSEMENT CONCERNANT L'ADAPTATEUR

LE ORDINATEUR PORTABLE DOIT ÊTRE UTILISÉE AVEC UN ADAPTATEUR SECTEUR CA DÉDIÉ.

- Assurez-vous de brancher le cordon d'alimentation à une prise mise à terre.
- Le NB doit être alimenté avec un adaptateur homologué UL62368-1 ou UL60950-1 dont le calibre minimum est de 19Vcc et 4,74A.

– AVERTISSEMENT!

Afin de réduire les risques de problèmes de sécurité, utilisez uniquement l'adaptateur CA fourni avec le produit, un remplacement fourni par Twinhead ou un adaptateur CA acheté comme accessoire chez Twinhead.

BATTERY SAFETY

DANGER OF EXPLOSION IF BATTERY IS INCORRECTLY REPLACED.

REPLACE ONLY WITH THE SAME OR EQUIVALENT TYPE RECOMMENDED BY THE MANUFACTURER. DISPOSE OF USED BATTERIES ACCORDING TO THE MANUFACTURER'S INSTRUCTIONS.

- replacement of a battery with an incorrect type that can defeat a safeguard (for example, in the case of some lithium battery types);
- disposal of a battery into fire or a hot oven, or mechanically crushing or cutting of a battery, that can result in an explosion;
- leaving a battery in an extremely high temperature surrounding environment that can result in an explosion or the leakage of flammable liquid or gas;
- a battery subjected to extremely low air pressure that may result in an explosion or the leakage of flammable liquid or gas.

SÉCURITÉ DE LA PILE

RISQUE D'EXPLOSION SI LA PILE EST REMPLACÉE INCORRECTEMENT.

REMPLACEZ-LA UNIQUEMENT AVEC UNE PILE SEMBLABLE OU DE MÊMES TYPES RECOMMANDÉS PAR LE FABRICANT. SUIVEZ LES INSTRUCTIONS DU FABRICANT POUR ÉLIMINER LES PILES USÉES.

- Le remplacement de la batterie avec un type incorrect qui peut contourner un dispositif de protection (dans le cas de certains types de batteries au lithium, par exemple);
- L'élimination de la pile dans un feu, un four chaud ou un broyeur mécanique qui peut provoquer une explosion;
- L'exposition de la pile à une température extrêmement élevée qui peut provoquer une explosion ou la fuite d'un liquide ou d'un gaz inflammable;

Appendix

- L'exposition de la pile à une pression atmosphérique extrêmement basse qui peut provoquer une explosion ou la fuite d'un liquide ou d'un gaz inflammable.

CAUTION FOR RJ-45

The RJ-45 jack is not used for telephone line connections.

AVERTISSEMENT POUR RJ-45

N'utilisez pas la prise RJ-45 pour une connexion à la ligne téléphonique.

Safety Instructions

These safety instructions should always be observed to ensure safe operation when handling the device.

- Do not place this device on an unstable table or surface. The device may fall, causing serious damage to its housing and components.
- Do not cover the device, or block the air ventilation holes of the device with any other objects.
- Do not use any sharp objects to tap on the display screen.
- Do not expose the device to direct sunlight and dusty environments.
- Keep the device away from excessive heat and humidity.
- Keep liquids away from the device.
- Keep the device away from any magnetic emitting devices as this may affect the quality of the wireless signal reception.
- When using an AC adapter:
 - ✓ Place this device in a location that is close enough to an electrical outlet to accommodate the length of the power cord and in order to turn off the power conveniently.
 - ✓ Operate this device only with the type of power source indicated on the device marking label.
 - ✓ Disconnect the AC adapter from the electrical outlet if the device is not being used for an extended period of time.
- When cleaning the device,
 - ✓ Be sure to turn off the device properly and unplug the AC adapter before cleaning.
 - ✓ Wipe the device with a clean, dry cloth.
 - ✓ Do not use abrasive cleaners to clean the device.

- Do not attempt to disassemble or repair this device. Doing so will void the warranty.

Instructions de sécurité

Ces instructions de sécurité doivent toujours être suivies pour assurer le fonctionnement sûr de l'appareil lors de sa manipulation.

- Ne placez pas cet appareil sur une table ou surface instable. L'appareil pourrait tomber et causer des dégâts sérieux à son boîtier et ses composants.
- Ne couvrez pas l'appareil, et ne bloquez pas les trous de ventilation avec d'autres objets.
- N'utilisez pas d'objet pointu pour appuyer sur l'écran.
- Ne placez pas l'appareil dans des environnements directement exposés au soleil ou poussiéreux.
- Gardez l'appareil à l'écart de la chaleur et de l'humidité.
- Gardez les liquides à l'écart de l'appareil.
- Gardez l'appareil à l'écart des appareils émettant des ondes électromagnétiques, car celles-ci peuvent affecter la réception du signal sans fil.
- Lors de l'utilisation d'un adaptateur secteur:
 - ✓ Placez l'appareil à un emplacement suffisamment proche d'une prise électrique pour prendre en charge la longueur du cordon d'alimentation.
 - ✓ Utilisez uniquement cet appareil avec le type d'alimentation électrique indiqué sur l'étiquette de l'appareil.
 - ✓ Débranchez l'adaptateur secteur de la prise électrique si vous ne prévoyez pas d'utiliser l'appareil pendant une période prolongée.
- Lors du nettoyage de l'appareil,
 - ✓ Veillez à éteindre l'appareil correctement et à débrancher l'adaptateur secteur avant le nettoyage.
 - ✓ Essuyez l'appareil avec un chiffon propre et sec.
 - ✓ N'utilisez pas de produits nettoyants abrasifs pour nettoyer l'appareil.
- Ne tentez pas de démonter ou réparer cet appareil. Ceci annulerait la garantie.