



balmoral™
engineering

Product Catalogue

Revision 12



balmoralengineering.com

info@balmoralengineering.com

+61 2 9482 4000



balmoral™
engineering

“WHO WE ARE”

Since 1974, Balmoral Engineering has been manufacturing and supplying a range of safety products for the Electricity Industry with a core focus on the prevention of Power Line Strikes.

We are a multi-generation family business with a long term view and partnership approach to working with our Utility customers.

We have forged close relationships not only with our customers, but also our Japanese suppliers who are also a multi-generation family company. For decades these partnerships have developed with a foundation of trust creating bilateral respect and dependable outcomes. This is reflected in the tenure of many of these relationships, some dating back to the companies inception.





Sections

1

WARNING MARKERS



ROTAMARKA™



2

LINE GUARDS



TIGER TAILS™



PANTHER TAILS™



LION TAILS™



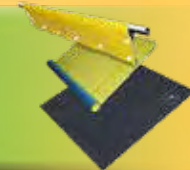
3

GLOVES & SLEEVES



4

MATS & COVERS



5

RESCUE KITS & ACCESSORIES





ROTAMARKA™



WARNING MARKERS



- Marine grade components



- Reduced line loading by design



- Thermally tested



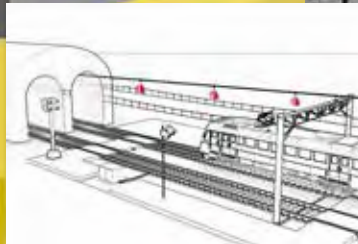
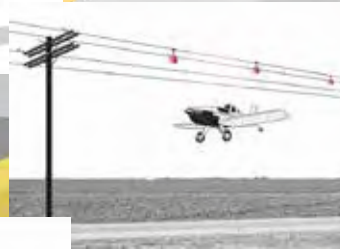
- UV Resistant



- Soft jaw protects cable and prevents creeping. Fits all lines from 2-50mm diameter



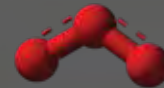
Compliant with AS 3891.2 2018



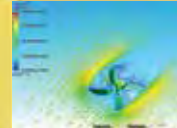
- Dielectric strength tested



- Snow and ice tested



- Ozone tested



- Wind tunnel tested

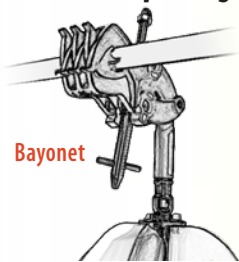


- Aerodynamic 3D design, rotates for high impact visibility from all angles of approach

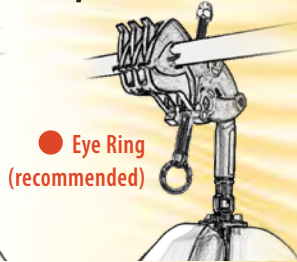


WARNING MARKERS

Choose Eye Ring or Bayonet



Bayonet



● Eye Ring
(recommended)

Warning Marker Drive Tool

WMDT | ~42 x 22mm SS (works with Eye or Bayonet)



Can be installed from Bucket Truck with Shotgun Stick (Eye version)



Recommended Products

ROTAMARKA
Install/uninstall
tool - universal - Eye

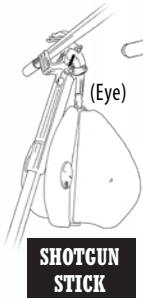
LLCR-E | ~300 x 55

**

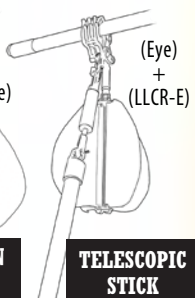
Can be installed from ground with Telescopic Stick and LLCR-E Tool (Eye version)



Installation Options



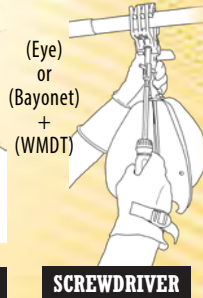
SHOTGUN
STICK



TELESCOPIC
STICK



DRIVER



SCREWDRIVER

This is a guide only, consult our Instructions For Use for further details.
Perform a risk assessment prior to undertaking any work.
Only to be used by industry certified personnel.
Must comply with all relevant work practice rules and industry guidelines.

***4Nm recommended tightening torque**

****Image representative only**



WARNING MARKERS

ROTAMARKA™



Recommended Products



Power line strikes from construction and agricultural plant and equipment are an all too common occurrence, potentially causing serious injury or death.

These incidents can result in major asset damage and power outages.

Our Rotamarka™ has been specifically designed to mitigate against these risks faced by electrical transmission and distribution companies, as well as contractors and industry workers worldwide.



- Designed with science
- Premium reflectors on all fins
- High internal contrast of fins provides better visibility in a range of environmental conditions
- Less markers required on lines
- Highly tested, designed for durability
- Aerodynamic design rotates for high impact visibility
- AS 3891.2 2018 Clause 2.3.1 (d) compliant
- 3D design provides enhanced visibility from all angles of approach



Recommended Products

Warning Marker - Part Number Legend

Example :: WM-CS-B-1H-RW

A B C D E

- A - Product type:** WM (Warning Marker)
- B - Line attachment:** CS (Clamp Screw)
- C - Hot Stick Attachment:** B/E (Bayonet or Eye Ring)

- D - Style of warning device:** 1H/1J (Rotamarka™ Flag)
- E - Colour:** RW/O/BY/BW (Red/White, Orange, Black/Yellow, Black/White)

● WM-CS-E-1H-BW
WM-CS-B-1H-BW



● WM-CS-E-1H-RW
WM-CS-B-1H-RW



WM-CS-E-1H-BY
WM-CS-B-1H-BY



WM-CS-E-1J-O
WM-CS-B-1J-O





LINE GUARDS

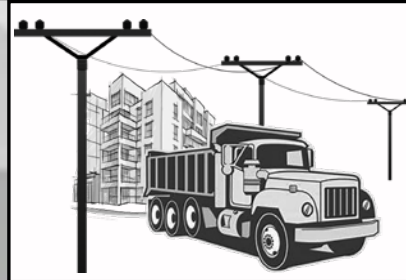
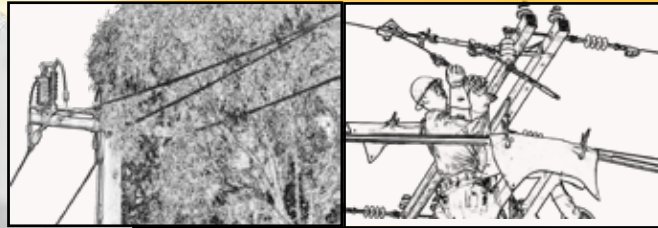
- Unique striped safety feature



- Stamped & rated to comply with Australian and International Standards

- Robust design and construction backed by decades of engineering to ensure the highest quality & safety standards

- Eyelet in bell housing allows locking by cable ties & complies with WHS requirements



- Weather resistant



- LV & HV options available

- Rigid guards or flexible style hose cater for most requirements

- Suitable for use on Power Lines & Wires as visual warning, mechanical protection and electrical insulation



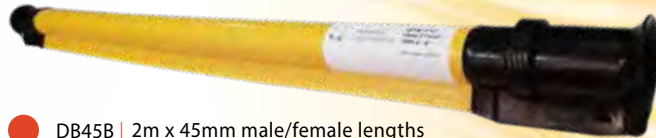


LINE GUARDS

Recommended Products



LION TAILS™



● DB45B | 2m x 45mm male/female lengths
PE, Yellow outer, Black inner safety feature
ASTM F 712, Class 2 15KV*



DB35B | 2m x 35mm male/female lengths
PE, Orange outer, Black inner safety feature
ASTM F 712, Class 3 26KV*



**Class 2
15KV**

**Class 3
26KV**

***Both phases covered | Other length options available on request**



LINE GUARDS

Recommended Products



TIGER TAILS™



DB35A | 2.5m x 35mm



DB35ARB | 2.5m x 35mm



DB35ARB125 | 1.25m x 35mm



DB45A | 2.5m x 45mm



LS70 | 2m x 70mm



**AS 4202
650V**

**ASTM F712 14.6KV
(Special Order)**



LINE GUARDS

Recommended Products



PANTHER TAILS™

**Class 2
14.6KV**



1.



**TPP15-Kit
Installation
tool kit for
TPP15 Rolls**



2.

3.



- 1. TPP15 | 60m x 15mm roll | EVA Black outer, Yellow inner safety feature | Electrically tested to ASTM F 712 Class 2 15KV*
- 2. TPP20 | 3m x 20mm male / female lengths | HDPE, Black Outer, Yellow inner safety feature | ASTM F 712 Class 2 15KV*
- 3 . TPP35 | 3m x 35mm male / female lengths | HDPE, Black Outer, Yellow inner safety feature | ASTM F 712 Class 2 15KV*

***Both phases covered**



LINE GUARDS

Guy Guards

GG | 2m x 45mm | HDPE

For Stay & Guy Wires
(not rated for electrical insulation)



Jumper Wire Guards

IPEP | 10m x 35mm | EVA | AS4202 Class 1 | 650V



Flexible hose for covering Bonds,
Bridges & Jumper Wires

Electrically tested to
ASTM F712
Class 2 14.6KV





GLOVES & SLEEVES



LV HV Testing Services Available

- Pure Latex Gloves manufactured under
ISO 9001
ISO 14001



- Certified to EN/IEC 60903 also available in ASTM D120
- Ergonomically shaped excellent strength & durability
- Supreme feel & flexibility
- Outer Protector Gloves custom designed to perfectly complement the Marigold Rubber Insulating Glove

- Manufactured without the use of solvents & hazardous chemicals utilising a proprietary aqueous dipping process



- Acid resistant
- Ozone resistant
- Low temperature resistant
- Comprehensive range of classes, colours, lengths and sizes, including half sizes
- Various cuff styles available including straight, contour and bell
- Arc flash certified





LV HV Testing Services Available

GLOVES & SLEEVES

Use the Chart below to determine the appropriate level of protection for your application

Labeling Chart			
Marigold® Natural Rubber Electrical Protection Equipment			
Class Colour	Proof Test Voltage AC/DC	Max. Use Voltage AC/DC	Insulating Rubber Glove Label
00 Beige	2,500 / 10,000	500 / 750	MARIGOLD INDUSTRIAL ANSI / ASTM D120 EN60903 TYPE 1 10 CLASS 00
0 Red	5,000 / 20,000	1,000 / 1,500	MARIGOLD INDUSTRIAL ANSI / ASTM D120 EN60903 TYPE 1 10 CLASS 0
1 White	10,000 / 40,000	7,500 / 11,250	MARIGOLD INDUSTRIAL ANSI / ASTM D120 EN60903 TYPE 1 10 CLASS 1
2 Yellow	20,000 / 50,000	17,000 / 25,500	MARIGOLD INDUSTRIAL ANSI / ASTM D120 EN60903 TYPE 1 10 CLASS 2
3 Green	30,000 / 60,000	26,500 / 39,750	MARIGOLD INDUSTRIAL ANSI / ASTM D120 EN60903 TYPE 1 10 CLASS 3
4 Orange	40,000 / 70,000	36,000 / 54,000	MARIGOLD INDUSTRIAL ANSI / ASTM D120 EN60903 TYPE 1 10 CLASS 4

Outer Protector Gloves should always be worn over Rubber Insulating Gloves to prevent mechanical damage to the rubber gloves. The Outer Protector must be properly sized and shaped to avoid the deformation or damage of the Rubber Insulating Glove. The minimum distance between the cuff of the Rubber Insulating Glove and the cuff of the Outer Protector Glove is listed in the table below "Clearance for Outer Protectors".

Clearance Table for Outer Protectors

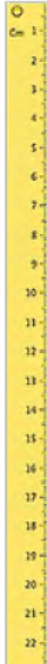
Glove Class	Min. Distance Between Outer Protectors & Rubber Insulating Gloves	
	inches	mm
00, 0	½	13
1	1	25
2	2	51
3	3	76
4	4	102





LV HV Testing Services Available

GLOVES & SLEEVES



Glove Length
280 mm (11 inch)
360 mm (14 inch)
400 mm (16 inch)
460 mm (18 inch)

Glove Size	Nominal Hand Circumference	
7	7 inches	
8	8 inches	203 mm
8½	8½ inches	216 mm
9	9 inches	229 mm
9½	9½ inches	241 mm
10	10 inches	254 mm
10½	10½ inches	267 mm
11	11 inches	279 mm

Tolerance = +/- 13 mm

* Allow an extra half inch if cotton inners are to be used



Rubber Insulating Glove Item Number Legend



Example :: RIG-4-18-YB-C-10H

A B C D E F

A - Glove type: RIG (Rubber Insulating Glove)

B - Class: 00/0/1/2/3/4

C - Length: 11/14/16/18 (inches)

D - Colour: R/Y/YB/BY (Red, Yellow, Yellow under Black, Black under Yellow)

E - Cuff: S/C/B (Straight/Contour/Bell)

F - Size: 7/8/8H/9/9H/10/10H/11 (H = ½ sizes)

How to measure

Measure around your hand above the V of the thumb. This gives you the circumference in inches.



LV HV Testing Services Available

GLOVES & SLEEVES

Rubber Insulating Sleeve Item Number Legend

Example :: RIS-4-RY-EC-Regular

A B C D E



A - Sleeve type: RIS (Rubber Insulating Sleeve)

B - Class: 2/3/4

C - Colour: RY (Red under Yellow)

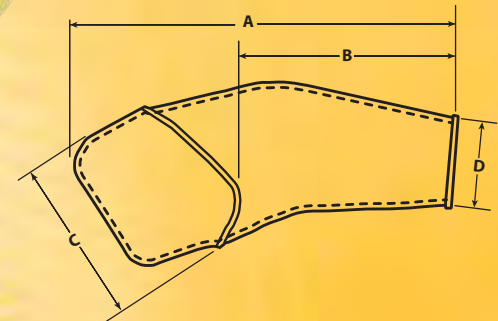
D - Arm: EC/S (Extra Curve/Straight)

E - Size: S/R/L/EL (Small/Regular/Large/Extra Large)



Extra Curved Arm Sleeve

A	B	C	D
in. (mm)	in. (mm)	in. (mm)	in. (mm)
Small 24.25 (616)	15.13 (384)	12.5 (317)	5.75 (146)
Regular 26.5 (673)	15.5 (394)	12.25 (311)	5.25 (140)
Large 27.75 (705)	16 (406)	12.87 (328)	6.87 (175)
Extra Large 29.5 (749)	17.5 (445)	12.87 (327)	7 (178)





LV HV Testing Services Available

GLOVES & SLEEVES



Recommended Products



Class 00 - 500V Straight Cuff 11 inch

- RIG0011RS7 | Size 7
- RIG0011RS8 | Size 8
- RIG0011RS8H | Size 8½
- RIG0011RS9 | Size 9
- RIG0011RS9H | Size 9½
- RIG0011RS10 | Size 10
- RIG0011RS10H | Size 10½
- RIG0011RS11 | Size 11



Class 00 - 500V Straight Cuff 14 inch

- RIG0014YS7 | Size 7*
- RIG0014YS8 | Size 8*
- RIG0014YS9 | Size 9*
- RIG0014YS10 | Size 10*
- RIG0014Y11 | Size 11*

***Special Order**



Class 0 - 1000V Straight Cuff 14 inch

- RIG014YS7 | Size 7
- RIG014YS8 | Size 8
- RIG014YS8H | Size 8½
- RIG014YS9 | Size 9
- RIG014YS9H | Size 9½
- RIG014YS10 | Size 10
- RIG014YS10H | Size 10½
- RIG014YS11 | Size 11



Class 0 - 1000V Straight Cuff 11 inch

- RIG011YS8 | Size 8*
- RIG011YS9 | Size 9*
- RIG011YS10 | Size 10*
- RIG011_Y511 | Size 11*



Class I - 5KV Straight Cuff 14 inch

- RIG114YBS8 | Size 8*
- RIG114YBS8H | Size 8½*
- RIG114YBS9 | Size 9
- RIG114YBS9H | Size 9½
- RIG114YBS10 | Size 10
- RIG114YBS10H | Size 10½
- RIG114YBS11 | Size 11*



LV HV Testing Services Available

GLOVES & SLEEVES



Class 2 - 17KV Bell Cuff 16 inch

- RIG216YBB8 | Size 8*
- RIG216YBB8H | Size 8½*
- RIG216YBB9 | Size 9
- RIG216YBB9H | Size 9½
- RIG216YBB10 | Size 10
- RIG216YBB10H | Size 10½
- RIG216YBB11 | Size 11*



Class 2 - 17KV Straight Cuff 16 inch

- RIG216YBS8 | Size 8
- RIG216YBS8H | Size 8½
- RIG216YBS9 | Size 9
- RIG216YBS9H | Size 9½
- RIG216YBS10 | Size 10
- RIG216YBS10H | Size 10½
- RIG216YBS11 | Size 11



Class 2 - 17KV Contour Cuff 18 inch

- RIG218YBC8 | Size 8*
- RIG218YBC8H | Size 8½*
- RIG218YBC9 | Size 9
- RIG218YBC9H | Size 9½
- RIG218YBC10 | Size 10
- RIG218YBC10H | Size 10½
- RIG218YBC11 | Size 11*



Class 3 - 26.5KV Bell Cuff 16 inch

- RIG316YBB8 | Size 8*
- RIG316YBB8H | Size 8½*
- RIG316YBB9 | Size 9
- RIG316YBB9H | Size 9½
- RIG316YBB10 | Size 10
- RIG316YBB10H | Size 10½
- RIG316YBB11 | Size 11*



Class 3 - 26.5KV Straight Cuff 16 inch

- RIG316YBS8 | Size 8
- RIG316YBS8H | Size 8½
- RIG316YBS9 | Size 9
- RIG316YBS9H | Size 9½
- RIG316YBS10 | Size 10
- RIG316YBS10H | Size 10½
- RIG316YBS11 | Size 11



Class 3 - 26.5KV Contour Cuff 18 inch

- RIG318YBC8 | Size 8*
- RIG318YBC8H | Size 8½*
- RIG318YBC9 | Size 9
- RIG318YBC9H | Size 9½
- RIG318YBC10 | Size 10
- RIG318YBC10H | Size 10½
- RIG318YBC11 | Size 11*

*Special Order



LV HV Testing Services Available

GLOVES & SLEEVES



Class 4 - 36KV Bell Cuff 18 inch

- RIG418YBB9 | Size 9
- RIG418YBB9H | Size 9½
- RIG418YBB10 | Size 10
- RIG418YBB10H | Size 10½
- RIG418YBB11 | Size 11*



Class 4 - 36KV Straight Cuff 18 inch

- RIG418YBS9 | Size 9
- RIG418YBS9H | Size 9½
- RIG418YBS10 | Size 10
- RIG418YBS10H | Size 10½
- RIG418YBS11 | Size 11



Class 4 - 36KV Contour Cuff 18 inch

- RIG418YBC9 | Size 9
- RIG418YBC9H | Size 9½
- RIG418YBC10 | Size 10
- RIG418YBC10H | Size 10½
- RIG418YBC11 | Size 11*



Class 2 - 17KV Extra Curved

- RIS2RYECS | Small
- RIS2RYECR | Regular
- RIS2RYECL | Large



Class 3 - 26.5KV Extra Curved

- RIS3RYECS | Small
- RIS3RYECR | Regular
- RIS3RYECL | Large



Class 4 - 36KV Extra Curved

- RIS4RYECS | Small
- RIS4RYECR | Regular
- RIS4RYECL | Large



Also available in selected sizes



LV HV Testing Services Available

GLOVES & SLEEVES

Arc Flash Safety Design



Velcro tab to secure strap

LV Outer Protector 10 inch - Goatskin Velcro Cotton Strap Kevlar Thread

- OUTLVGS7 | Size 7
- OUTLVGS8 | Size 8-8½
- OUTLVGS9 | Size 9-9½
- OUTLVGS10 | Size 10-10½
- OUTLVGS11 | Size 11

Note: Choose same size as Marigold Class 00 and 0 gloves or best fit for comfort



HV Outer Protector 12 inch - Goatskin

- OUTHVGS8 | Size 8-8½
- OUTHVGS9 | Size 9-9½
- OUTHVGS10 | Size 10-10½
- OUTHVGS11 | Size 11

Note: Choose same size as Marigold Class 1, 2, 3 & 4 gloves or best fit for comfort

Arc Flash Rated



Powerflex, Neo Coat LVL4 Flame, LVL5 Cut EN

- PFLEX-8 | Size 8
- PFLEX-9 | Size 9
- PFLEX-10 | Size 10
- PFLEX-11 | Size 11

Note: Choose one size up if using over Marigold Class 00 and 0 Gloves or best fit for comfort

Sleeve Accessories

- B2 | Sleeve Buttons (1pc)
- B22 | Sleeve Buttons (2pc - 4 pack)
- H1 | Harness C/W 4 B2 Buttons
- S1 | Straps (2) C/W 4 B2 Buttons

H1



S1



B2



B22



Inner Liners One Size Fits All

- COT1 | Cotton - Interlock | 10"
- COT2 | PolyCotton - Knitted | 10"
- COT3 | Cotton - Interlock | 14"



Glove Talc

GLO-TALC | 100g



Glove Air Test Tool

- GLO-ROL1 | 360 x 40 | HV
- GLO-ROL2 | 300 x 25 | LV





GLOVES & SLEEVES

LV HV Testing Services Available

Recommended Products

LV Glove Bag
2 Pocket Treated Canvas
Velcro Close - Webbing Loops

26012 | 390x210x45

Solid Walls



Hard Base Breathable

LV Glove Bag
1 Pocket Loomstate Canvas
Velcro Close - Webbing Loop

26023 | 400x220x75



LV Glove Bag
2 Pocket Loomstate Canvas
Velcro Close - Webbing Loop

26016 | 400x220x75



Slimline front pocket suitable for leather storage

LV Glove Bag
3 Pocket Loomstate Canvas
Velcro Close - Webbing Loop

26017 | 400x220x150



Slimline front pocket suitable for leather storage

HV Glove Bag
2 Pocket Loomstate Canvas
Velcro Close - Metal Snap Hook

26042 | 500x220x150



HV Glove & Sleeve Bag
3 Pocket Loomstate Canvas
Velcro Close - Metal Snap Hook

26035 | 700x200x250



Slimline front pocket suitable for leather storage



MATS & COVERS



LV HV Testing Services Available

- EPDM Rubber or PVC material options

- Dual colour material safety options available

- Non-slip & flexible Ground Mats

- Weather resistant



Recycling of off-cuts into firehose when possible

- Crease in Class I PVC style covers to conform to line



Velcro



Stud



Magnetic

- Stamped & rated to comply with Australian and International Standards

- Meets ENA & electrical safety rules and guidelines in most States and Territories



MATS & COVERS

LV HV Testing Services Available

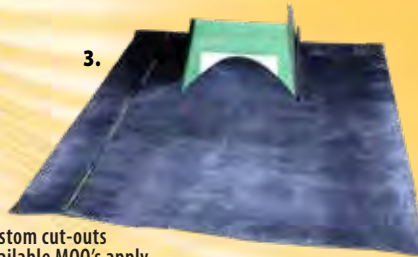
Recommended Products

Ground Mats EPDM

- | | |
|--|--|
| 1. 181A-1 1mx1mx6mm Class A 650V Cut-out | 3. 181A-3 1.5mx1mx6mm Class A 650V Slots |
| 181A-2 1.2mx1mx6mm Class A 650V Plain | 181A-4 900x900x6mm Class A 650V Plain |



1.



3.

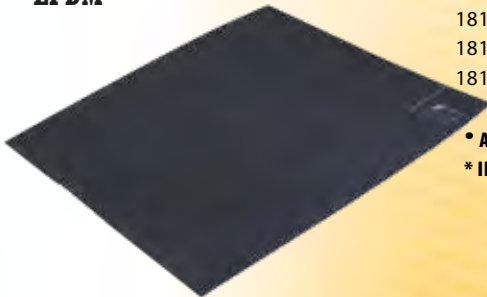
Custom cut-outs
available MOQ's apply

Equipotential Mats

- 181EP-1 | 770x770mm | C/W Bag



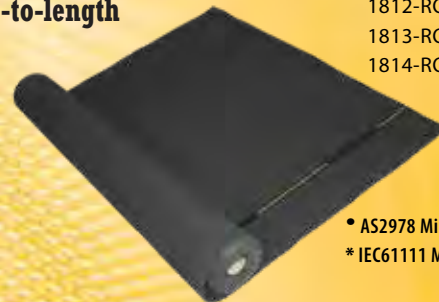
Ground Mats 1mx1mx6mm EPDM



- 181A* | Class A | 650V
- 1810* | Class 0 | 1000V
- 1811* | Class 1 | 7.5KV
- 1812* | Class 2 | 17KV
- 1813* | Class 3 | 26.5KV
- 1814* | Class 4 | 36KV

● AS2978
* IEC61111

Ground Mats 10mx1mx6mm EPDM Cut-to-length



- 181A-ROLL* | Class A | 650V
- 1810-ROLL* | Class 0 | 1000V
- 1811-ROLL* | Class 1 | 7.5KV
- 1812-ROLL* | Class 2 | 17KV
- 1813-ROLL* | Class 3 | 26.5KV
- 1814-ROLL* | Class 4 | 36KV

● AS2978 Minimum 900mm cut size
* IEC61111 Minimum 600mm cut size



LV HV Testing Services Available



Recommended Products

MATS & COVERS

Line Covers

650V PVC Magnet/Press Studs

AS4202

- 2003 | 1.2mx225mm drop
- 3003 | 1.2mx300mm drop
- 4004 | 1.2mx375mm drop
- 5002 | 1.5mx225mm drop

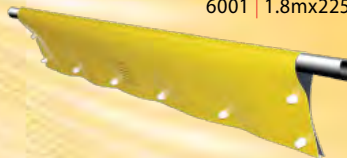


Line Covers

650V PVC Studs

AS4202

- 2001 | 1.2mx225mm drop
- 3001 | 1.2mx300mm drop
- 4001 | 1.2mx375mm drop
- 5001 | 1.5mx225mm drop
- 6001 | 1.8mx225mm drop



Line Covers

650V EPDM Velcro

AS4202

- 2004 | 1.2mx225mm drop
- 2006 | 600x225mm drop
- 2010 | 1mx235mm drop
- 3002 | 1.2mx300mm drop

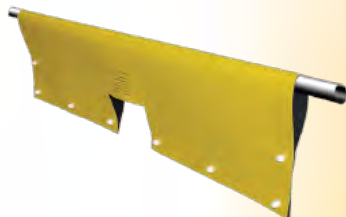


Cross Arm Covers

650V

AS4202

- 7001 | 1.2mx375mm drop | PVC Studs
- 7004 | 1.2mx225mm drop | EPDM Velcro
- 7008 | 1.2mx225mm drop | PVC Mag/PStuds
- 7010 | 1mx235mm drop | EPDM Velcro

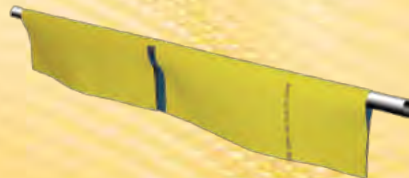


Comms Cable Covers

650V

AS4202

- 7002 | 1.2mx225mm | EPDM Velcro
- 8002 | 600x225mm | PVC Studs
- 8006 | 600x225mm | PVC Mag/PStud



Fuse Link Covers

650V

AS4202

- 8001 | 600x375mm drop | PVC Studs
- 8007 | 850x850mm | PVC Plain
- 8010 | 850x700mm | EPDM Velcro
- 8016 | 400x400mm drop | PVC Studs
- 8020 | 600x375mm drop | PVC Mag





LV HV Testing Services Available

Recommended Products

MATS & COVERS

Substation & Switchboard Kits



Clear or Yellow Drapes Available

Available Fasteners:
(Magnetic, Eyelet, Clamps)

- 16002 | (9008) (9007) (9019) (181A) (25006) (26031) (YS-211-3-5)
2 x small plain Drapes, 2 x medium plain Drapes, 1 x large plain Drape,
1 x Ground Mat, 1 x Velcro Strap, 1 x Bag, 4 x Clamps
- 16003 | (10005) (10006) (181A) (25006) (26031)
4 x small magnetic Drapes, 2 x large magnetic Drapes, 1 x Ground Mat,
1 x Velcro Strap, 1 x Bag
- 16004 | (10005) (10021) (26031) (YS-211-3-5)
4 x small magnetic Drapes, 2 x large magnetic Drapes, 1 x Bag, 4 x Clamps
- 16005 | (10005) (10006) (26031)
4 x small magnetic Drapes, 2 x large magnetic Drapes, 1 x Bag
- 16006 | (10029) (10030) (181A) (25006) (26031)
4 x small magnetic Drapes, 2 x large magnetic Drapes, 1 x Ground Mat,
1 x Velcro Strap, 1 x Bag
- 16007 | (10031) (10032) (26031) (YS-211-3-5)
2 x small clear magnetic Drapes, 2 x large clear magnetic Drapes,
4 x Clamps, 1 x Bag

Custom kits available upon application, MOQ's apply



Street Light Column Kits



- 14001 | (23002) (INS-S) (INS-L) (26004)
1 x magnetic Column Cover (pair), 2 x small Inserts, 2 x large Inserts, 1 x Bag
- 14002 | (23002) (INS-S) (INS-L) (181A) (25006) (26031)
1 x magnetic Column Cover (pair), 2 x small Inserts, 2 x large inserts,
1 x Ground Mat, 1 x Velcro Strap, 1 x Bag
- 14003 | (23002) (INS-S) (26004)
1 x magnetic Column Cover (pair), 2 x small Inserts, 1 x Bag

Custom kits available upon application, MOQ's apply



Images representative only!



LV HV Testing Services Available



Recommended Products

MATS & COVERS

Substation & Switchboard Drapes EPDM 650V



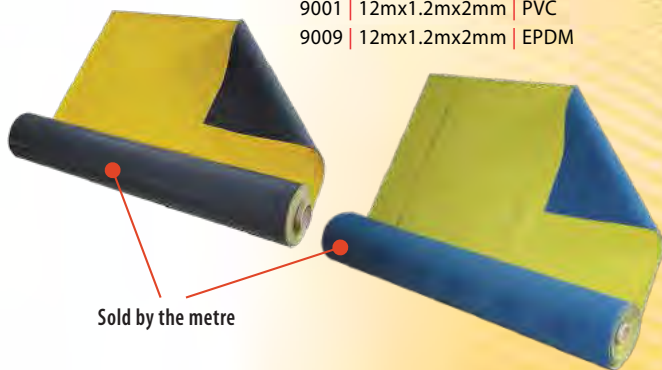
- 9016 | 1mx100mm | plain
- 9017 | 600x300mm | plain
- 9018 | 300x300mm | plain
- 10007 | 300x225mm | eyelets
- 10008 | 450x300mm | eyelets
- 10009 | 600x450mm | eyelets
- 10010 | 900x600mm | eyelets
- 10011 | 1.8mx900mm | eyelets

Substation & Switchboard Drapes PVC 650V



- 8008 | 850x850mm | magnetic
- 9007 | 600x450mm | plain
- 9008 | 400x300mm | plain
- 9019 | 1.2mx900mm | plain
- 10005 | 600x450mm | eyelets/mag
- 10006 | 1.2mx600mm | eyelets/mag
- 10020 | 900x900mm | eyelets
- 10021 | 2mx600mm | magnetic

Substation & Switchboard Drapes 650V Cut-to-length



- 9001 | 12mx1.2mx2mm | PVC
- 9009 | 12mx1.2mx2mm | EPDM

Sold by the metre

Cable End Covers PVC 650V



- 19001 | 180x110mm
- 19002 | 245x190mm
- 19003 | 230x110mm



Image representative only!



MATS & COVERS

Bags

PVC - Zipper

- 1. | 26014 | Line Cover Bag | 1.4mx400x100mm
- 2. | 26015 | Ground Mat Bag | 1.1mx150x100mm



Fits up to 5x1.2m long Line Covers



Fits standard 1mx1m Ground Mat

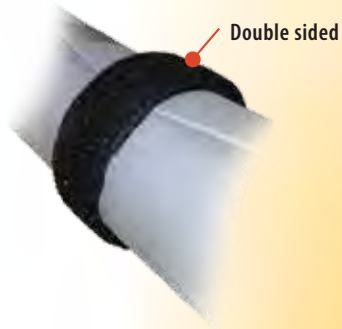
Clamp Polypropylene

YS-211-3-5 | 220x115x22mm



Straps Velcro

- 25005 | 500x50mm
- 25006 | 1mx50mm



Double sided

Studs

**Sold each
not pair**

1.



- 1. | 24003 | Magnet
- 2. | PB4 | Standard Stud
- 3. | PB5 | Male and female Press Stud

2.



3.





RESCUE KITS & ACCESSORIES

- Pole Top Kits and components

- Low Voltage Switchboard Rescue Kits and components

- Latest comfort style Linesman Safety Harnesses/Belts, leading brands

- Customised kits and accessories to meet local and national industry standards



- Quality manufacturers and brands

- Easy adjusting Pole Straps

- Friction descenders and lowering devices

- Rescue Bags & Boxes
Pouches
Knives
Gloves
Cutters
Crooks



*Images representative only,
actual brands supplied
may differ.*

RESCUE KITS & ACCESSORIES

Recommended Products

Pole Top Rescue Kit (NSW - ASP - C/W Bag)

11006 | 1x Bag, 1x CPR card, 1x Anchor Strap
1x Body Belt & Pole Strap, 1x Knife,
1x Rope, 1x Rubber Gloves



Pole Top Rescue Kit (NSW - ASP - C/W Box)

11019 | 1x Box, 1x CPR card, 1x Body Belt & Pole Strap,
1x Knife, 1x Rope, 1x Rubber Gloves, 1x Anchor Strap



LV Switchboard Rescue Kit

11002 | 1x Bag, 1x CPR Card, 1x Crook, 1x Torch, 1x Isolate Here Sign,
1x Trauma Dressing, 1x Fire Blanket, 1x Rubber Gloves



Pole Top Rescue Kit (VIC & TAS)

11003 | 1x Bag, 1x CPR card, 1x Anchor Strap, 1x Body Belt and Pole Strap,
1x Pliers, 1x Riggers Gloves, 1x Webbing Cutter, 1x Rubber Gloves





RESCUE KITS & ACCESSORIES

Tool Bags

- 26018 | 350x150x250 | 15 Internal Pockets
- 26022 | 380x290 | 2 External Pockets
- 26028 | 9 Pocket | Webbing Belt



PPE Equipment Bags

- 26036 | 780 x 286 x 360 Canvas (heavy duty)
- 26040 | 550 x 300 x 300 Canvas (medium duty)



Rescue Descender Devices

- ANC-ST-2 | 1.8m



LV Crooks

- GAN-CRK | 370 x 25 HDPE





NOTES



balmoralTM
engineering