

# 2020 Corolla Hatchback



# Get into it.

Low to the ground and lightweight, the 2020 Toyota Corolla Hatchback will reintroduce you to the thrill of driving. With an available black roof,<sup>5</sup> its sporty exterior highlights the practical five-door design. And the available SE Nightshade Edition speaks to your sense of style. Corolla Hatchback is also up to speed with the latest standard tech like Android Auto™<sup>8</sup> compatibility, standard SiriusXM®<sup>13</sup> and our state-of-the-art Toyota Safety Sense™ 2.0 (TSS 2.0).<sup>43</sup> So, whether you're headed downtown for the night or going away for the weekend, Corolla Hatchback is ready for whatever's next.



Left to right: XSE shown in Blue Flame with available accessory rear window spoiler and SE shown in Blizzard Pearl.<sup>5</sup>

See numbered footnotes in Disclosures section.

# Fun at first sight.

---

Corolla Hatchback has unforgettable charisma. Its sporty hatchback design makes a lasting first impression and inspires you to go out and make more happen. Coming down the road, its polished available chrome grille surround reels in eyes while its distinctive rear spoiler acts as its signature sign-off. After you park, you'll catch yourself looking over your shoulder, trying to steal one more glance before you walk away.



## **18-IN. ALLOY WHEELS**

Available 18-in. alloy wheels add to the unique profile of Corolla Hatchback. Every stoplight is a chance to make a new impression. Every spoke on the wheels is crafted to enhance style.



## **CHROME TAILPIPE DIFFUSER**

It's the little things that give Corolla Hatchback its sporty street cred. The standard chrome tailpipe diffuser captures eyes from every corner and ensures that this hatchback's good looks just can't be ignored.



## **LED HEADLIGHTS**

The fun doesn't stop after the sun goes down. Stylish headlights featuring distinct LED Daytime Running Lights (DRL) flaunt Corolla Hatchback's charisma and light up the road.

STYLING



XSE shown in Blue Flame with available accessory rear window spoiler.

# Rev up your heart beats per minute.

---

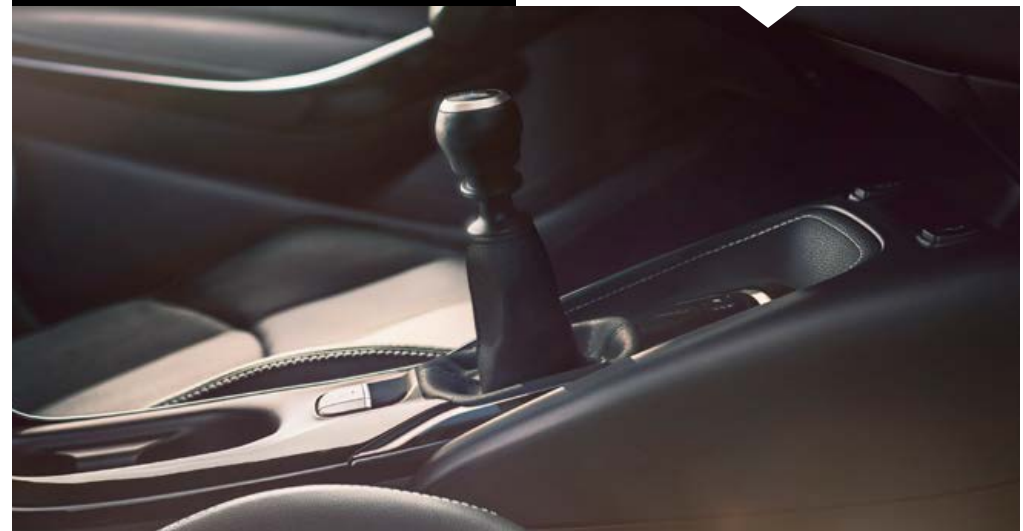
Corolla Hatchback was engineered to reintroduce you to the thrill of driving. Under the hood, its 2.0L Dynamic Force Engine releases endorphins the moment you step on the gas. With its low and lightweight body, Corolla Hatchback will punch up your enthusiasm around every curve. Rest assured, fast-paced fun is waiting for you the second you start the engine.

## PADDLE SHIFTERS

Hone your paddle-shifting skills with our Dynamic Shift-CVT, which combines the immediate response of a traditional First gear with the efficiency of a Continuously Variable Transmission (CVT).

## 6-SPEED INTELLIGENT MANUAL TRANSMISSION (iMT)

Three pedals. Six forward gears. One incredible driving experience. Corolla Hatchback's available 6-speed Intelligent Manual Transmission (iMT) features close-ratio gears down low for spirited acceleration, with taller gears up top for optimized fuel economy while cruising. It also incorporates an intelligent rev-matching feature, helping to reduce transmission shock when downshifting.



PERFORMANCE



XSE shown in Blue Flame with available accessory rear window spoiler.

# Fun for all five senses.

---

Corolla Hatchback doesn't compromise on comfort. Premium piano-black accents, soft-touch materials and contrast stitching on the dash and doors show that no inch of the interior was overlooked. More premium features, like available leather-trimmed seats and dual zone automatic climate control, naturally complement Corolla Hatchback's fun-to-drive DNA. Just like its performance, Corolla Hatchback's interior doesn't chase a feeling — it creates it.



## SOFT-TOUCH INTERIOR AND AUTO WINDOWS

Corolla Hatchback's premium features like soft-touch materials on the dash and doors shift your senses into the moment. Plus, automatic windows power up and down at the touch of the button to instantly elevate the drive. No matter where you're going, Corolla Hatchback was designed to make sure driving doesn't feel like a chore.



## HEATED SEATS

This driver-centric cabin doesn't settle on comfort. With just the press of a button, the available heated seats will get toasty in no time so you can stop worrying about the cold and start enjoying every turn.



## CONTRAST STITCHING

Complementing Corolla Hatchback's driver-centric feel is available contrast stitching. This subtle design touch adds visual interest and contemporary style. It's one of many quality details that helps Corolla Hatchback's new interior stand out.

PREMIUM INTERIOR



XSE interior shown in Black combination leather trim.



# Shift into the moment.

Step inside Corolla Hatchback and you only think about one thing: driving. An available 7-in. Multi-Information Display (MID) helps you stay focused around every turn by displaying driving information right before your eyes. With Android Auto™<sup>8</sup> compatibility, just plug in your phone and your music, maps and contacts pop up on the 8-in. touch-screen display. Standard SiriusXM®<sup>13</sup> gives you access to over 140+ channels. And with Amazon Alexa<sup>10</sup> compatibility, you can simply ask to play music, read the news, control your smart home, tell a joke and more.

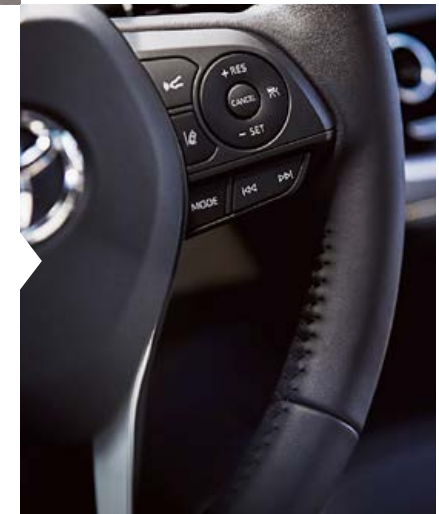


## DUAL ZONE AUTOMATIC CLIMATE CONTROL

You like it cool. Your passenger likes it warm. And with Corolla Hatchback's available dual zone automatic climate control, you can both ride in total comfort.

## LEATHER-TRIMMED STEERING WHEEL AND PIANO-BLACK ACCENTS

Even your fingertips feel the thrill of driving. Corolla Hatchback's standard leather-trimmed steering wheel and shift knob fit comfortably between your hands while available piano-black accents perfectly complement the refined interior.



## SMART KEY SYSTEM<sup>31</sup>

Don't waste time fumbling for your keys. Corolla Hatchback comes standard with the Smart Key System that lets you unlock the doors and trunk, plus start the engine, with just the push of a button — all while the key fob sits comfortably in your pocket or bag.



FUNCTIONAL INTERIOR



XSE interior shown in Black combination leather trim.

# Up to speed with the latest tech.

Corolla Hatchback has street smarts. With available Remote Connect,<sup>23</sup> you can remotely lock/unlock doors, start/stop the engine,<sup>56</sup> find your vehicle and more using your compatible smartwatch.<sup>57</sup> Standard Apple CarPlay<sup>®9</sup> compatibility takes the things you want to do with your iPhone<sup>®58</sup> while driving and puts them right on Corolla Hatchback's 8-in. touch-screen display. In short, Corolla Hatchback puts the latest technology and infotainment at your control by touch or voice commands.



## WEARABLE CONNECTIVITY

Available Remote Connect through the Toyota app<sup>23</sup> gives you amazing control of Corolla Hatchback, all from your smart device. Through touch or voice commands, you can locate your vehicle, lock or unlock the doors and even start the engine.<sup>56</sup>

## JBL<sup>®26</sup> SOUND SYSTEM

Make every seat a front-row seat. Corolla Hatchback's available Premium Audio multimedia system with JBL<sup>®</sup> w/Clari-Fi<sup>®26</sup> uses eight speakers to deliver an enhanced sound quality and hit every high note.





XSE interior shown in Black combination leather trim.

Screen depiction accurate as of summer 2019. See numbered footnotes in Disclosures section.

STYLING

Unforgettable.



XSE shown in Blue Flame with available accessory rear window spoiler.

# Smart safety.

While city streets can be exciting, they're also unpredictable. That's why every Corolla Hatchback comes with intelligent safety technology. The available Blind Spot Monitor (BSM)<sup>4</sup> can help alert you if another vehicle is in your blind spot. And its available Adaptive Front-Lighting System (AFS)<sup>3</sup> "follows" your front wheels when you turn. Safe to say, Corolla Hatchback was designed to help make the open road a safer playground.



## BLIND SPOT MONITOR<sup>4</sup>

By illuminating a warning signal on the applicable outside mirror, the available Blind Spot Monitor (BSM) can help alert you to vehicles that may be hiding in your vehicle's blind spot.



## STAR SAFETY SYSTEM™

Every new Corolla Hatchback is built with our Star Safety System™, an advanced integration of active safety technologies designed to enhance traction, braking and more.



## ADAPTIVE HEADLIGHTS<sup>3</sup>

Corolla Hatchback is loaded with technology designed to enhance every drive — even at night. The available Adaptive Front-Lighting System (AFS) "follows" your front wheels when you turn and lights up the road before you.

SAFETY



XSE shown in Blue Flame.



# Designed for safety.

Toyota Safety Sense™ 2.0 (TSS 2.0)<sup>43</sup> is a bundle of active safety features standard on every 2020 Corolla Hatchback. These innovative features were designed to help protect you and your passengers from harm.



## PRE-COLLISION SYSTEM WITH PEDESTRIAN DETECTION<sup>44</sup>

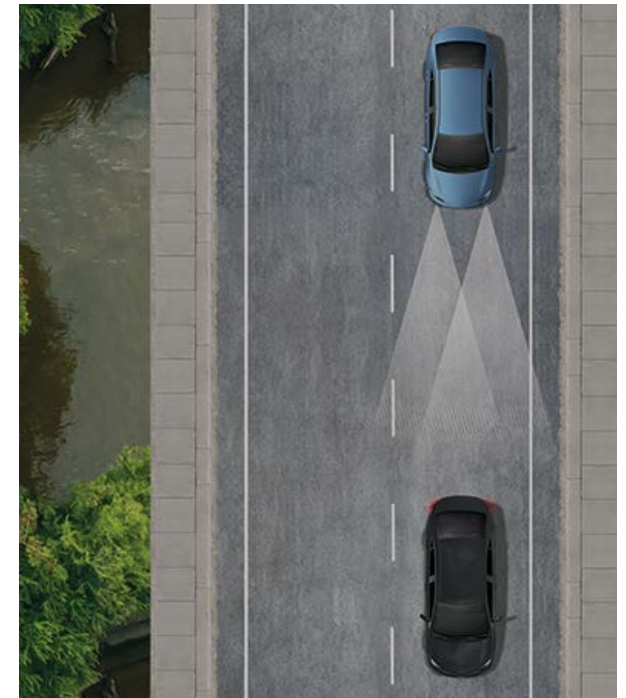
Pre-Collision System with Pedestrian Detection (PCS w/PD) is designed to help keep the road safe by detecting a vehicle, pedestrian or bicyclist in certain situations. The latest system has enhanced low-light capabilities for pedestrian detection. By combining millimeter-wave radar with a camera capable of certain shape recognition, the system provides an audio/visual alert, warning you of a possible collision under certain circumstances. If you don't react, the system is designed for automatic braking support to help mitigate the potential for a collision.

See numbered footnotes in Disclosures section.



## LANE DEPARTURE ALERT WITH STEERING ASSIST<sup>45</sup> AND ROAD EDGE DETECTION

Using Road Edge Detection or by detecting visible lane markings, Lane Departure Alert with Steering Assist (LDA w/SA) is designed to issue both an audible alert and visual warning on the MID screen if an inadvertent lane departure is detected at speeds above 32 mph. If the system determines that the driver is not taking corrective steering action, the Steering Assist function is designed to initiate and provide gentle corrective steering to help keep Corolla Hatchback in the lane.



## AUTOMATIC HIGH BEAMS<sup>2</sup>

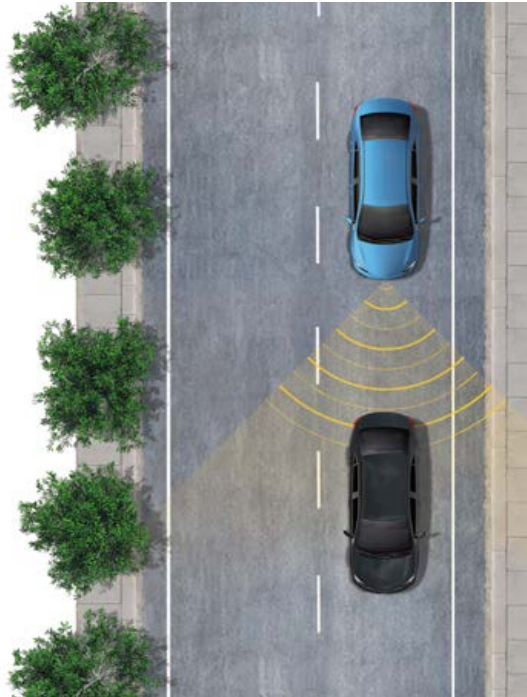
The Automatic High Beams (AHB) feature is a safety system designed to help you see more clearly at night — without distracting other drivers. Designed to activate at speeds above 25 mph, AHB relies on an in-vehicle camera to help detect the headlights of oncoming vehicles and taillights of preceding vehicles, then automatically toggles between high and low beams accordingly to provide the appropriate amount of light. By using high beams more frequently, the system may allow for earlier detection of pedestrians and obstacles.





**ROAD SIGN ASSIST<sup>47</sup>**

Road Sign Assist (RSA) is designed to help keep you safe on the road. Using a forward-facing intelligent camera, Road Sign Assist is designed to detect speed limit signs, stop signs, yield signs and Do Not Enter signs, and display them on the MID.



**FULL-SPEED RANGE DYNAMIC RADAR CRUISE CONTROL<sup>46, 59</sup>**

Intended for highway use and similar to “constant speed” cruise control, available Full-Speed Range Dynamic Radar Cruise Control (DRCC) (unavailable on manual transmissions) lets you drive at a preset speed. DRCC uses vehicle-to-vehicle distance control, which is designed to adjust your speed, to help you maintain a preset distance from the vehicle ahead of you that is driving at a slower speed. DRCC uses a front-grille-mounted radar and an in-vehicle camera designed to detect vehicles and their distance. If a driver is traveling slower than you, or within your preset range, DRCC is designed to automatically slow your vehicle down without deactivating cruise control. If DRCC determines you need to slow down more, an audio and visual alert notifies you and brakes may be applied. When there’s no longer a vehicle driving slower than your preset speed in front of you, DRCC will then accelerate to the preset speed and regular cruise control will resume.



**LANE TRACING ASSIST<sup>48, 59</sup>**

When the available Full-Speed Range Dynamic Radar Cruise Control (DRCC) is enabled and lane markers are detectable, Lane Tracing Assist (LTA) (unavailable on manual transmissions) uses the lines on the road and/or preceding vehicles to help keep the vehicle centered while also displaying the vehicle’s position on the MID screen. The system is designed to help reduce driver strain and increase convenience, and may benefit drivers most during traffic jams — but can be turned off using the MID.



## SE

### Powertrain

- 2.0L 4-Cylinder Dynamic Force Engine
- Dynamic Shift Continuously Variable Transmission (CVT)
- Available Intelligent Manual Transmission (iMT)
- Up to 32 city/41 highway/35 combined est. mpg<sup>55</sup>

### Exterior Features

- LED headlights and LED Daytime Running Lights (DRL) with auto on/off feature
- 16-in. twin-spoke alloy wheels
- Front dark gray grille surround
- Color-keyed rear spoiler
- Color-keyed heated power outside mirrors with turn signal indicators
- Single exhaust with dual chrome diffusers
- Color-keyed rear diffuser surround

### Interior Features

- Audio — includes 6 speakers and 8-in. touch-screen
- Android Auto™<sup>8</sup> compatibility
- Apple CarPlay<sup>9</sup> compatibility
- Amazon Alexa<sup>10</sup> compatibility
- SiriusXM<sup>13</sup>
- 4.2-in. Multi-Information Display (MID)
- Automatic climate control
- Leather-wrapped steering wheel
- Fabric sport seats with 6-way adjustable driver's seat
- 60/40 split fold-down rear seats with center armrest and cup holders
- Electric Parking Brake (EPB)<sup>34</sup> with Brake Hold<sup>35</sup> function

### Safety/Convenience

- Toyota Safety Sense™ 2.0 (TSS 2.0)<sup>43</sup> (automatic transmission) — Pre-Collision System with Pedestrian Detection (PCS w/PD)<sup>44</sup> Lane Departure Alert with Steering Assist (LDA w/SA)<sup>45</sup> Automatic High Beams (AHB)<sup>2</sup> Full-Speed Range Dynamic Radar Cruise Control (DRCC)<sup>46</sup> Road Sign Assist (RSA)<sup>47</sup> and Lane Tracing Assist (LTA)<sup>48</sup>
- Toyota Safety Sense™ 2.0 (TSS 2.0)<sup>43</sup> (manual transmission) — Pre-Collision System with Pedestrian Detection (PCS w/PD)<sup>44</sup> Lane Departure Alert with Steering Assist (LDA w/SA)<sup>45</sup> Automatic High Beams (AHB)<sup>2</sup> Dynamic Radar Cruise Control (DRCC)<sup>49</sup> and Road Sign Assist (RSA)<sup>47</sup>

### Options and Package

- SE Preferred Package (automatic transmission) includes:
  - Audio Plus — includes 6 speakers and 8-in. touch-screen
  - Blind Spot Monitor (BSM)<sup>4</sup>
- Enhanced cargo space<sup>54</sup>
- Two-tone Midnight Black Metallic roof<sup>5</sup> and outside mirrors

See numbered footnotes in Disclosures section.



## SE Nightshade Edition

Adds to or replaces features offered on SE

### Powertrain

- 2.0L 4-Cylinder Dynamic Force Engine
- Dynamic Shift Continuously Variable Transmission (CVT)
- 32 city/41 highway/35 combined est. mpg<sup>55</sup>

### Exterior Features

- 18-in. black alloy wheels
- Black front lower grille surround
- Black rear spoiler
- Black heated power outside mirrors with turn signal indicators
- Single exhaust with dual black diffusers
- Black rear diffuser surround
- Black rear Toyota emblem and badges

### Interior Features

- Audio — includes 6 speakers and 8-in. touch-screen
- Android Auto™<sup>8</sup> compatibility
- Apple CarPlay<sup>9</sup> compatibility
- Amazon Alexa<sup>10</sup> compatibility
- SiriusXM<sup>13</sup>
- 4.2-in. Multi-Information Display (MID)
- Leather-wrapped steering wheel
- Fabric sport seats with 6-way adjustable driver's seat
- 60/40 split fold-down rear seats with center armrest and cup holders
- Electric Parking Brake (EPB)<sup>34</sup> with Brake Hold<sup>35</sup> function

### Safety/Convenience

- Toyota Safety Sense™ 2.0 (TSS 2.0)<sup>43</sup> — Pre-Collision System with Pedestrian Detection (PCS w/PD)<sup>44</sup> Lane Departure Alert with Steering Assist (LDA w/SA)<sup>45</sup> Automatic High Beams (AHB)<sup>2</sup> Full-Speed Range Dynamic Radar Cruise Control (DRCC)<sup>46</sup> Road Sign Assist (RSA)<sup>47</sup> and Lane Tracing Assist (LTA)<sup>48</sup>



## XSE

Adds to or replaces features offered on SE

### Powertrain

- 2.0L 4-Cylinder Dynamic Force Engine
- Dynamic Shift Continuously Variable Transmission (CVT)
- Available Intelligent Manual Transmission (iMT)
- Up to 30 city/38 highway/33 combined est. mpg<sup>55</sup>

### Exterior Features

- Integrated LED fog lights
- 18-in. machined finish alloy wheels
- Front chrome grille surround
- Color-keyed heated power outside mirrors with turn signal and blind spot warning indicators<sup>4</sup> (automatic transmission)

### Interior Features

- Audio Plus — includes 6 speakers and 8-in. touch-screen
- Android Auto™<sup>8</sup> compatibility
- Apple CarPlay<sup>9</sup> compatibility
- Amazon Alexa<sup>10</sup> compatibility
- SiriusXM<sup>13</sup>
- 7-in. TFT Multi-Information Display (MID)
- Dual zone automatic climate control
- Leather-trimmed heated sport seats with fabric inserts with 8-way power-adjustable driver's seat

### Safety/Convenience

- Toyota Safety Sense™ 2.0 (TSS 2.0)<sup>43</sup> (automatic transmission) — Pre-Collision System with Pedestrian Detection (PCS w/PD)<sup>44</sup> Lane Departure Alert with Steering Assist (LDA w/SA)<sup>45</sup> Automatic High Beams (AHB)<sup>2</sup> Full-Speed Range Dynamic Radar Cruise Control (DRCC)<sup>46</sup> Road Sign Assist (RSA)<sup>47</sup> and Lane Tracing Assist (LTA)<sup>48</sup>
- Toyota Safety Sense™ 2.0 (TSS 2.0)<sup>43</sup> (manual transmission) — Pre-Collision System with Pedestrian Detection (PCS w/PD)<sup>44</sup> Lane Departure Alert with Steering Assist (LDA w/SA)<sup>45</sup> Automatic High Beams (AHB)<sup>2</sup> Dynamic Radar Cruise Control (DRCC)<sup>49</sup> and Road Sign Assist (RSA)<sup>47</sup>
- Blind Spot Monitor (BSM)<sup>4</sup>

### Options and Package

- XSE Preferred Package (automatic transmission) includes:
  - Premium Audio with Dynamic Navigation<sup>25</sup> and JBL® w/Clari-Fi<sup>26</sup> — includes 8 speakers including subwoofer and amplifier, and 8-in. touch-screen
  - Qi-compatible wireless smartphone charging<sup>33</sup>
- Adaptive Front-Lighting System (AFS)<sup>3</sup>
- Two-tone Midnight Black Metallic roof<sup>5</sup> and outside mirrors

# Color



Midnight Black Metallic



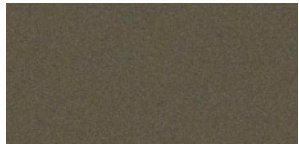
Galactic Aqua Mica



Blue Flame



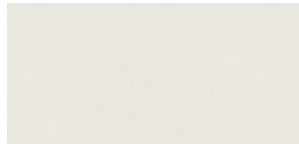
Smoked Paprika Metallic



Oxide Bronze



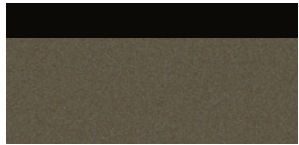
Classic Silver Metallic



Blizzard Pearl<sup>5</sup>



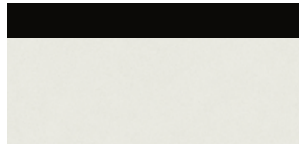
Smoked Paprika Metallic/  
Midnight Black Metallic roof<sup>5</sup>



Oxide Bronze/Midnight Black  
Metallic roof<sup>5</sup>



Classic Silver Metallic/Midnight  
Black Metallic roof<sup>5</sup>



Blizzard Pearl/Midnight Black  
Metallic roof<sup>5</sup>



Blue Flame/Midnight Black  
Metallic roof<sup>5</sup>

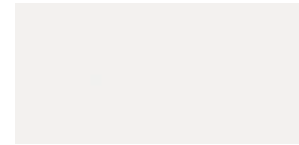
# Nightshade



Midnight Black Metallic

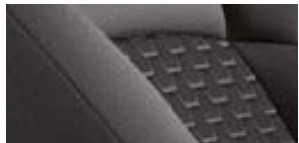


Classic Silver Metallic



Super White

# Trim



SE fabric shown in Black



SE fabric shown in Moonstone



XSE combination leather trim  
shown in Black



XSE combination leather trim  
shown in Moonstone



SE fabric shown in Black

# Wheels



16-in. twin-spoke alloy wheels



18-in. machined finish  
alloy wheels



18-in. black alloy wheels

\*Not all colors and trims available on all model grades. See dealer for details. See numbered footnotes in Disclosures section.

ACCESSORIES

Add a personal touch to your Corolla Hatchback with Genuine Toyota Accessories. Some accessories may not be available in all regions of the country. See your Toyota dealer for details.

Air filter cleaning kit  
Alloy wheel locks  
All-weather floor liners<sup>60</sup>  
Badge insert for body side molding pieces  
Black lower rocker appliqué  
Blackout emblem overlays  
Body side moldings

Cargo net — spider<sup>54</sup>  
Cargo tote<sup>54</sup>  
Cargo tray<sup>54</sup>  
Carpet cargo mat<sup>54</sup>  
Carpet floor mats<sup>60</sup>  
Coin holder/ashtray cup  
Door edge guards

Doorsill protectors  
Emergency assistance kit  
First aid kit  
Mudguards  
Paint protection film<sup>61</sup>  
Rear bumper protector  
Rear window spoiler

Removable cross bars<sup>62</sup>  
TME low deck cargo tray  
TRD air filter  
TRD Air Intake System  
Universal tablet holder<sup>53</sup>



Removable cross bars<sup>62</sup>



Mudguards



Rear window spoiler



Body side moldings



Alloy wheel locks



All-weather floor liners<sup>60</sup>



Rear bumper protector



Cargo net — spider<sup>54</sup>

FEATURES<sup>1</sup>

	SE	SE NIGHTSHADE EDITION	XSE		SE	SE NIGHTSHADE EDITION	XSE
<b>EXTERIOR</b>							
LED headlights and LED Daytime Running Lights (DRL) with auto on/off feature	S	S	S	Color-keyed heated power outside mirrors with turn signal indicators	S	–	S
LED taillights	S	S	S	Black heated power outside mirrors with turn signal indicators	O	S	O
Integrated LED fog lights	–	–	S	Blind spot warning indicators <sup>4</sup> on side mirrors	O (CVT)	–	S
Adaptive Front-Lighting System (AFS) <sup>3</sup>	–	–	O	Black outside door handles	–	S	–
Dark gray front upper grille surround	S	S	–	Black side rocker panels	–	S	–
Chrome front upper grille surround	–	–	S	Black roof-mounted shark-fin antenna	O	S	O
Black front lower grille surround	–	S	–	Black roof <sup>5</sup>	O	–	O
Black rear spoiler	O	S	O	Black rear Toyota emblem	–	S	–
Single exhaust with dual chrome diffusers	S	–	S	Black rear grade badge	–	S	–
Single exhaust with dual black diffusers	–	S	–	16-in. twin-spoke alloy wheels with P205/55R16 tires	S	–	–
Black rear diffuser surround	–	S	–	18-in. black alloy wheels with P225/40R18 tires	–	S	–
Variable intermittent windshield wipers	S	S	S	18-in. machined finish alloy wheels with P225/40R18 tires	–	–	S
<b>INTERIOR</b>							
Automatic climate control	S	S	–	Audio Plus — includes six speakers, 8-in. touch-screen, HD Radio, <sup>TM20</sup> USB media port, <sup>11</sup> two USB charge ports, <sup>11</sup> advanced voice recognition, <sup>12</sup> hands-free phone capability and music streaming <sup>7</sup> via <i>Bluetooth</i> <sup>®7</sup> wireless technology, Android Auto <sup>TM8</sup> & Apple CarPlay <sup>®9</sup> & Amazon Alexa <sup>10</sup> compatible, SiriusXM <sup>®13</sup> with 3-month All Access trial <sup>14</sup> Connected Services <sup>15</sup> — Safety Connect <sup>®16</sup> with 1-year trial <sup>17</sup> Service Connect <sup>21</sup> with 10-year trial <sup>22</sup> Remote Connect <sup>23</sup> with 1-year trial <sup>24</sup> and Wi-Fi Connect <sup>18</sup> with up to 2GB within 3-month trial <sup>19</sup> See <a href="http://toyota.com/audio-multimedia">toyota.com/audio-multimedia</a> for details.	O (CVT)	–	S
Dual zone automatic climate control	–	–	S	Premium Audio with Dynamic Navigation <sup>25</sup> and JBL <sup>®</sup> w/Clari-Fi <sup>®26</sup> — includes eight speakers including subwoofer and amplifier, 8-in. touch-screen, HD Radio, <sup>TM20</sup> USB media port, <sup>11</sup> two USB charge ports, <sup>11</sup> Dynamic Navigation <sup>25</sup> with up to a 3-year trial <sup>27</sup> Dynamic POI Search, Dynamic Voice Recognition, <sup>28</sup> hands-free phone capability and music streaming <sup>7</sup> via <i>Bluetooth</i> <sup>®7</sup> wireless technology, Android Auto <sup>TM8</sup> & Apple CarPlay <sup>®9</sup> & Amazon Alexa <sup>10</sup> compatible, SiriusXM <sup>®13</sup> with 3-month All Access trial <sup>14</sup> Connected Services <sup>15</sup> — Safety Connect <sup>®16</sup> with 1-year trial <sup>17</sup> Service Connect <sup>21</sup> with 10-year trial <sup>22</sup> Remote Connect <sup>23</sup> with 1-year trial <sup>24</sup> Wi-Fi Connect <sup>18</sup> with up to 2GB within 3-month trial <sup>19</sup> and Destination Assist <sup>29</sup> with 1-year trial. <sup>30</sup> See <a href="http://toyota.com/audio-multimedia">toyota.com/audio-multimedia</a> for details.	–	–	O (CVT)
Lighted footwells, front console tray, rear console box and glove box	S	S	S	Smart Key <sup>31</sup> remote keyless entry system with Push Button Start	S	S	S
Power windows with one-touch auto up/down	S	S	S	Covered center console, armrest and storage	S	S	S
4.2-in. Multi-Information Display (MID) with odometer, outside temperature, fuel economy and trip information, current/average fuel economy, distance to empty, average speed, trip distance with timer, TPMS <sup>5</sup> scheduled maintenance, compass and warning messages	S	S	–	One 12V auxiliary power outlet <sup>32</sup>	S	S	S
7-in. TFT Multi-Information Display (MID) with customizable settings, odometer, outside temperature, fuel economy and trip information, current/average fuel economy, distance to empty, average speed, trip distance with timer, TPMS <sup>5</sup> scheduled maintenance, compass and warning messages	–	–	S	Two USB 2.0 charging ports <sup>11</sup>	S	S	S
Fabric sport seats with 6-way adjustable driver's seat with seatback pocket; 4-way adjustable front passenger seat with seatback pocket	S	S	–	Qi-compatible wireless smartphone charging <sup>33</sup> with charge indicator light	–	–	O (CVT)
Leather-trimmed heated sport seats with fabric inserts; 8-way power-adjustable driver's seat with seatback pocket; 4-way adjustable front passenger seat with seatback pocket	–	–	S	ISOFIX lower anchor (left and right seats)	S	S	S
60/40 split fold-down rear seats with center armrest and cup holders	S	S	S	Top tether anchor	S	S	S
Premium leather-trimmed tilt/telescopic steering wheel with audio, Multi-Information Display (MID), <i>Bluetooth</i> <sup>®7</sup> hands-free phone and voice-command controls	S	S	S	Electric Parking Brake (EPB) <sup>34</sup> with Brake Hold <sup>35</sup> function	S	S	S
Paddle shifters	S (CVT)	S	S (CVT)				
Sport Mode	S (CVT)	S	S (CVT)				
Intelligent Manual Transmission (iMT)	O	–	O				
Active Cornering Assist (ACA)	S	S	S				
Vehicle speed-sensing Electric Power Steering (EPS)	S	S	S				
Audio — includes six speakers, 8-in. touch-screen, Android Auto <sup>TM8</sup> & Apple CarPlay <sup>®9</sup> & Amazon Alexa <sup>10</sup> compatible, USB media port, <sup>11</sup> two USB charge ports, <sup>11</sup> hands-free phone capability, advanced voice recognition <sup>12</sup> and music streaming <sup>7</sup> via <i>Bluetooth</i> <sup>®7</sup> wireless technology, SiriusXM <sup>®13</sup> with 3-month All Access trial <sup>14</sup> Connected Services <sup>15</sup> — Safety Connect <sup>®16</sup> with 1-year trial <sup>17</sup> and Wi-Fi Connect <sup>18</sup> with up to 2GB within 3-month trial <sup>19</sup> See <a href="http://toyota.com/audio-multimedia">toyota.com/audio-multimedia</a> for details.	S	S	–				

See numbered footnotes in Disclosures section.

S = Standard O = Optional – = Not available

SPECIFICATIONS

**SAFETY AND CONVENIENCE**

	SE	SE NIGHTSHADE EDITION	XSE
<b>STAR SAFETY SYSTEM</b> Star Safety System™ — includes Enhanced Vehicle Stability Control (VSC) <sup>36</sup> Traction Control (TRAC), 4-wheel Anti-lock Brake System (ABS), Electronic Brake-force Distribution (EBD), Brake Assist (BA) <sup>37</sup> and Smart Stop Technology® (SST) <sup>38</sup>	S	S	S
Eight airbags <sup>39</sup> — includes Advanced Airbag System with driver and front passenger dual stage airbags, front side airbags, driver knee airbag, passenger seat cushion airbag, and side curtain airbags	S	S	S
Driver and front passenger Whiplash-Injury-Lessening (WIL) <sup>40</sup> seats	S	S	S
3-point seatbelts for all seating positions; driver-side Emergency Locking Retractor (ELR) and Automatic/Emergency Locking Retractor (ALR/ELR) on all passenger belts	S	S	S
LATCH (Lower Anchors and Tethers for Children) includes lower anchors on outboard rear seats	S	S	S
Child-protector rear door locks and power window lockout control	S	S	S
Energy-absorbing collapsible steering column	S	S	S
Front and rear energy-absorbing crumple zones	S	S	S
Side-impact door beams	S	S	S

**MECHANICAL/PERFORMANCE**

**ENGINE**

	SE	SE NIGHTSHADE EDITION	XSE
2.0L Dynamic Force 4-Cylinder DOHC 16-Valve chain drive with Dual Variable Valve Timing with intelligence (VVTi); 168 hp @ 6,600 rpm; 151 lb.-ft. @ 4,800 rpm	S	S	S

**EMISSION RATING**

	SE	SE NIGHTSHADE EDITION	XSE
Federal Environmental Protection Agency (EPA) Emission Standard Tier 3, Bin 50	S	S	S
California Air Resources Board (CARB) Emission Standard: Low Emission Vehicle III (LEV III), Ultra Low Emission Vehicle (ULEV) 50	S	S	S

**TRANSMISSION**

	SE	SE NIGHTSHADE EDITION	XSE
Dynamic-Shift Continuously Variable Transmission (CVT)	S	S	S
6-speed Intelligent Manual Transmission (iMT)	O	–	O
Sport Mode	S (CVT)	S	S (CVT)

**DRIVETRAIN**

	SE	SE NIGHTSHADE EDITION	XSE
Front-Wheel Drive (FWD)	S	S	S

**BODY CONSTRUCTION**

	SE	SE NIGHTSHADE EDITION	XSE
Unitized body	S	S	S

**SUSPENSION**

	SE	SE NIGHTSHADE EDITION	XSE
MacPherson strut front suspension	S	S	S
Trailing-wishbone rear suspension	S	S	S

**BRAKES**

	SE	SE NIGHTSHADE EDITION	XSE
Power-assisted ventilated 11.5-in. front disc brakes; solid 10.5-in. rear disc brakes	S	S	S
Anti-lock Brake System (ABS)	S	S	S
Vehicle Stability Control (VSC) <sup>36</sup>	S	S	S
Electric Controlled Brake (ECB) system	S	S	S

Tire Pressure Monitor System (TPMS)<sup>6</sup>

	SE	SE NIGHTSHADE EDITION	XSE
Safety Connect <sup>®16</sup> — includes Emergency Assistance, Stolen Vehicle Locator, <sup>41</sup> Roadside Assistance <sup>42</sup> and Automatic Collision Notification. Available by subscription. Complimentary one-year trial subscription. <sup>17</sup>	S	S	S

	SE	SE NIGHTSHADE EDITION	XSE
Toyota Safety Sense™ 2.0 (TSS 2.0) <sup>43</sup> — Pre-Collision System with Pedestrian Detection (PCS w/PD); <sup>44</sup> Lane Departure Alert with Steering Assist (LDA w/SA); <sup>45</sup> Automatic High Beams (AHB); <sup>2</sup> Full-Speed Range Dynamic Radar Cruise Control (DRCC); <sup>46</sup> Road Sign Assist (RSA) <sup>47</sup> and Lane Tracing Assist (LTA) <sup>48</sup>	S (CVT)	S	S (CVT)

	SE	SE NIGHTSHADE EDITION	XSE
Toyota Safety Sense™ 2.0 (TSS 2.0) <sup>43</sup> — Pre-Collision System with Pedestrian Detection (PCS w/PD); <sup>44</sup> Lane Departure Alert with Steering Assist (LDA w/SA); <sup>45</sup> Automatic High Beams (AHB); <sup>2</sup> Dynamic Radar Cruise Control (DRCC); <sup>46</sup> and Road Sign Assist (RSA) <sup>47</sup>	S (iMT)	–	S (iMT)

	SE	SE NIGHTSHADE EDITION	XSE
Blind Spot Monitor (BSM) <sup>4</sup>	O (CVT)	–	S

	SE	SE NIGHTSHADE EDITION	XSE
Hill Start Assist Control (HAC) <sup>50</sup>	S	S	S

	SE	SE NIGHTSHADE EDITION	XSE
Anti-theft system with engine immobilizer <sup>51</sup>	S	S	S

	SE	SE NIGHTSHADE EDITION	XSE
ToyotaCare <sup>52</sup> featuring a no cost maintenance plan and roadside assistance <sup>52</sup>	S	S	S

**DIMENSIONS**

**EXTERIOR (in.)**

	SE	SE NIGHTSHADE EDITION	XSE
Overall height	57.1	57.1	57.1
Overall width	70.5	70.5	70.5
Overall length	172.0	172.0	172.0
Wheelbase	103.9	103.9	103.9
Track (front/rear)	60.3/60.8	60.3/60.8	60.3/60.8
Ground clearance	5.1	5.1	5.1
Coefficient of drag (Cd)	.32	.32	.32

**INTERIOR (front/rear) (in.)**

	SE	SE NIGHTSHADE EDITION	XSE
Head room	38.4/37.6	38.4/37.6	38.4/37.6
Shoulder room	53.9/54.5	53.9/54.5	53.9/54.5
Hip room	53.9/45.5	53.9/45.5	53.9/45.5
Leg room	42.0/29.9	42.0/29.9	42.0/29.9
Seating capacity	5	5	5

**WEIGHTS AND CAPACITIES**

	SE	SE NIGHTSHADE EDITION	XSE
Curb weight (lb.)			
Manual	3060	3060	3060
Automatic	3060	3060	3060
EPA passenger volume (cu. ft.)	84.6	84.6	84.6
Cargo volume (cu. ft.) <sup>54</sup>	17.8	17.8	17.8
Fuel tank (gal.)	13.2	13.2	13.2

**WHEELS AND TIRES**

	SE	SE NIGHTSHADE EDITION	XSE
16-in. aluminum wheels, silver metallic paint	S	–	–
18-in. aluminum wheels, all black	–	S	–
18-in. aluminum wheels, bright machined finish with dark-gray metallic paint	–	–	S
Type: All-Season	S	S	S
Spare: Temporary	S	S	S
Size: 205/55R16	S	–	–
225/40R18	–	S	S

**MILEAGE ESTIMATES (mpg city/highway/combined)<sup>55</sup>**

	SE	SE NIGHTSHADE EDITION	XSE
Dynamic Shift Continuously Variable Transmission (CVT)	32/41/35	32/41/35	30/38/33
Intelligent Manual Transmission (iMT)	28/37/31	–	28/37/31

See numbered footnotes in Disclosures section.

S = Standard O = Optional – = Not available

## CARS BUILT FOR THE WAY YOU LIVE

At Toyota, we build cars for how you live. From building advanced safety features designed to help prevent crashes to driving cross-country to understand how we can make your driving experience better, our work starts with understanding your needs. Building cars for how you live also means thinking about tomorrow — from fuel efficiency and environmental innovations, to things beyond cars, like a bicycle that you can control with your mind. And because what we learn building cars can help improve lives in other places, we do things like help communities rebuild their homes quickly after a disaster and work with soup kitchens to help them serve more people faster. Toyota. Built for how you live. Together we are going places.

## DISCLOSURES

1. Toyota strives to build vehicles to match customer interest and thus they typically are built with popular options and option packages. Not all options/packages are available separately and some may not be available in all regions of the country. If you would prefer a vehicle with no or different options, contact your dealer to check for current availability or the possibility of placing a special order. Color(s) depicted may vary based on multiple factors, including ambient lighting and the format in which it is being viewed (e.g., computer, mobile device or print). 2. Automatic High Beams operate at speeds above 25 mph. Factors such as a dirty windshield, weather, lighting and terrain limit effectiveness, requiring the driver to manually operate the high beams. See *Owner's Manual* for additional limitations and details. 3. The Adaptive Front-Lighting System helps improve night vision. Situations such as a dirty windshield, rapidly changing light conditions or hilly terrain may limit effectiveness, requiring the driver to manually turn off the system. See *Owner's Manual* for additional limitations and details. 4. Do not rely exclusively on the Blind Spot Monitor. Always look over your shoulder and use your turn signal. There are limitations to the function, detection and range of the monitor. See *Owner's Manual* for additional limitations and details. 5. Extra-cost color. 6. The Tire Pressure Monitor System alerts the driver when tire pressure is critically low. For optimal tire wear and performance, tire pressure should be checked regularly with a gauge; do not rely solely on the monitor system. See *Owner's Manual* for additional limitations and details. 7. The Bluetooth® word mark and logos are registered trademarks owned by Bluetooth SIG, Inc., and any use of such marks by Toyota is under license. A compatible Bluetooth®-enabled phone must first be paired. Phone performance depends on software, coverage and carrier. 8. Vehicle user interface is a product of Google and its terms and privacy statement apply. To use Android Auto on your car display, you'll need an Android Auto compatible vehicle or aftermarket stereo, an Android phone running Android 5.0 (Lollipop) or higher, and the Android Auto app. Google, Android and Android Auto are trademarks of Google LLC. 9. Apps and services are subject to change at any time without notice. Data charges may apply. Apple CarPlay® functionality requires a compatible iPhone® connected with an approved data cable into the USB media port. Apple CarPlay® is a registered trademark of Apple Inc. 10. Amazon, Alexa and all related logos are trademarks of Amazon.com, Inc. or its affiliates. Requires adequate signal strength and smartphone. See applicable application for details. Not all Amazon Alexa functionality is available for in-vehicle use and some functions depend on smart home technology. Download of the Toyota+Alexa app is required to begin in-vehicle use of Alexa. Data charges may apply. Apps, prices and services subject to change at any time without notice. To learn more, go to <https://www.toyota.com/audio-multimedia>. To learn more about Toyota's data collection, use, sharing and retention, please visit <https://www.toyota.com/privacyvts/>. 11. May not be compatible with all mobile phones, MP3/WMA players and like models. 12. Advanced voice recognition capabilities vary by head unit. 13. SiriusXM® audio services require a subscription sold separately by Sirius XM Radio Inc. If you decide to continue service after your trial, the subscription plan you choose will automatically renew thereafter and you will be charged according to your chosen payment method at then-current rates. Fees and taxes apply. To cancel, you must call SiriusXM at 1-866-635-2349. See SiriusXM Customer Agreement for complete terms at [www.siriusxm.com](http://www.siriusxm.com). All fees and programming subject to change. Not all vehicles or devices are capable of receiving all services offered by SiriusXM. Current information and features may not be available in all locations, or on all receivers. ©2019 Sirius XM Radio Inc. SiriusXM and all related marks and logos are trademarks of Sirius XM Radio Inc. 14. SiriusXM All Access trial length and service availability may vary by model, model year or trim. 15. Connected Services depends on an operative telematics device, a cellular connection, navigation map data, GPS signal strength and other factors outside of Toyota's control, all of which can limit system functionality or availability, including access to response center and emergency support. Service may vary by vehicle and region. Apps and services subject to change at any time without notice. See [toyota.com/connected-services](http://toyota.com/connected-services) for details. To learn about Toyota's data collection, use, sharing and retention, please visit <https://www.toyota.com/privacyvts/>. Stolen vehicle police report required to use Stolen Vehicle Locator. 16. Toyota Safety Connect® depends on an operative telematics device, a cellular connection, navigation map data and GPS signal strength and other factors outside of Toyota's control, all of which can limit system functionality or availability, including access to response center and emergency support. Stolen vehicle police report required to use Stolen Vehicle Locator. Registration required. Service subject to change at any time without notice. Terms and conditions of subscription service agreement apply. Service may vary by vehicle and region. See usage precautions and service limitations in *Owner's Manual* and at [toyota.com/connected-services/](http://toyota.com/connected-services/) for additional details. To learn about Toyota's data collection, use, sharing and retention, please visit <https://www.toyota.com/privacyvts/>. 17. The Safety Connect® trial period is at no extra cost and begins on the original date of purchase or lease of a new vehicle. After the trial period expires, enrollment in paid subscription is required to access the service. 18. Eligible vehicle and wireless service required. Coverage and service not available everywhere. Valid in the contiguous U.S. and Alaska. Do not drive distracted. Go to [att.com/toyota](http://att.com/toyota) for terms and conditions. 19. The Wi-Fi Connect trial period is at no extra cost and begins on the date of activation. After the trial period expires, enrollment in a paid subscription is required to access the service. Terms and conditions apply. 20. HD Radio™ Technology manufactured under license from iBiquity Digital Corporation U.S. and Foreign Patents. HD Radio™ and the HD, HD Radio, and "Arc" logos are proprietary trademarks of iBiquity Digital Corp. 21. Information provided is based on the last time data was collected from the vehicle and may not be up to date. Service Connect depends on an operative telematics device, a cellular connection, navigation map data, GPS signal strength and other factors outside of Toyota's control, which can limit functionality or availability. Service may vary by vehicle and region. Registration required. Service subject to change at any time without notice. Terms and conditions of subscription service agreement apply. See usage precautions and service limitations in *Owner's Manual* and at [toyota.com/connected-services](http://toyota.com/connected-services/) for additional details. To learn about Toyota's data collection, use, sharing and retention, please visit <https://www.toyota.com/privacyvts/>. 22. The Service Connect trial period is at no extra cost and begins on the original date of purchase or lease of a new vehicle. After the respective trial period expires, enrollment in paid subscription is required to access the service. 23. Use only if aware of circumstances surrounding vehicle and it is legal and safe to do so (e.g., do not remotely start engine if vehicle is in an enclosed space or vehicle is occupied by a child). Remote Connect depends on an operative telematics device, a cellular connection, GPS signal strength and other factors outside of Toyota's control, which can limit system functionality and availability. Service may vary by vehicle and region. Registration and app download required. Terms and conditions of subscription service agreement apply. Data charges may apply. Remote start/stop not available on manual-transmission-equipped vehicles. Services subject to change at any time without notice. See usage precautions and service limitations in *Owner's Manual* and at <https://www.toyota.com/connected-services/> for additional details. To learn about Toyota's data collection, use, sharing and retention, please visit <https://www.toyota.com/privacyvts/>. 24. The Remote Connect trial period is at no extra cost and begins on the original date of purchase or lease of a new vehicle. After the trial period expires, enrollment in a paid subscription is required to access the service. Terms and conditions apply. 25. Dynamic Navigation depends on an operative telematics device, a cellular connection, navigation map data and GPS signal strength, and other factors outside of Toyota's control, which can limit system functionality or availability. Services not available in every city or roadway. Use common sense when relying on information provided. Service may vary by vehicle and region. Registration is required. Terms and conditions of subscription services agreement apply. See *Owner's Manual* and <https://toyota.com/connected-services/> for additional limitations and details. To learn about Toyota's data collection, use, sharing and retention, please visit <https://www.toyota.com/privacyvts/>. 26. JBL® and Clari-Fi® are registered trademarks of Harman International Industries, Inc. 27. The Dynamic Navigation three year trial period begins on the original date of purchase or lease of a new vehicle. After the trial period expires, enrollment in paid subscription is required to access the service. 28. Dynamic voice recognition capabilities vary by head unit. 29. Destination Assist depends on an operative telematics device, a cellular connection, navigation map data and GPS signal strength and other factors outside of Toyota's control, which can limit system ability functionality or availability. Use common sense when relying on this information. Service may vary by vehicle and region. Registration required. Services subject to change at any time without notice. Terms and conditions of subscription services agreement apply. See *Owner's Manual* and [toyota.com/connected-services/](http://toyota.com/connected-services/) for additional limitations and details. To learn about Toyota's data collection, use, sharing and retention, please visit <https://www.toyota.com/privacyvts/>. 30. The Destination Assist Connect trial period is at no extra cost and begins on the original date of purchase or lease of a new vehicle. After the trial period expires, enrollment in a paid subscription is required to access the service. 31. The Smart Key System may interfere with some pacemakers or cardiac defibrillators. If you have one of these medical devices, please talk to your doctor to see if you should deactivate this system. 32. Rated for 12 volts. See *Owner's Manual* for additional limitations and details. 33. Qi wireless charging may not be compatible with all mobile phones, MP3/WMA players and like models. When using the wireless charging system, avoid placing metal objects between the wireless charger and the mobile device when charging is active. Doing so may cause metal objects to become hot and could cause burns. 34. When the system is on, Electric Parking Brake is designed to engage the Parking Brake under limited conditions. It may not hold the vehicle under all conditions. See *Owner's Manual* for additional limitations and details. 35. When the system is on, Brake Hold is designed to keep the brakes engaged after the driver brings the vehicle to a

## DISCLOSURES (continued)

complete stop. It may not hold the vehicle under certain conditions and does not function when the vehicle is in Reverse. Brake Hold is not a substitute for safe and attentive driving. See *Owner's Manual* for additional limitations and details. **36.** Vehicle Stability Control is an electronic system designed to help the driver maintain vehicle control under adverse conditions. It is not a substitute for safe and attentive driving practices. Factors including speed, road conditions, weather and driver steering input can all affect whether VSC will be effective in preventing a loss of control. See *Owner's Manual* for additional limitations and details. **37.** Brake Assist is designed to help the driver take advantage of ABS and is not a substitute for safe driving practices. Braking effectiveness also depends on proper vehicle maintenance, tire and road conditions. See *Owner's Manual* for additional limitations and details. **38.** Smart Stop Technology® operates only in the event of certain contemporaneous brake and accelerator pedal applications. When engaged, the system will reduce power to help the brakes bring the vehicle to a stop. Factors including speed, road conditions and driver input can all impact stopping distance. Smart Stop Technology® is not a substitute for safe and attentive driving and does not guarantee instant stopping. See *Owner's Manual* for additional limitations and details. **39.** Airbag systems are Supplemental Restraint Systems and are designed to inflate only under certain conditions and in certain types of severe collisions. To decrease the risk of injury from an inflating airbag, always wear seatbelts and sit upright in the middle of the seat as far back as possible. Do not put objects in front of an airbag or around the seatback. Do not use a rearward-facing child seat in any front passenger seat. See *Owner's Manual* for additional limitations and details. **40.** Whiplash-Injury-Lessening front seats can help reduce the severity of whiplash injury in certain rear-end collisions. **41.** Building and/or parking structures may limit system effectiveness. Stolen vehicle police report required to use Stolen Vehicle Locator. For additional assistance contact the Toyota Customer Experience Center at 1-800-331-4331. **42.** Requires adequate cellular coverage and GPS signal strength. May not work in all areas. Service may vary by vehicle and region. See Toyota dealer for details and exclusions. **43.** Toyota Safety Sense™ effectiveness is dependent on many factors including road, weather and vehicle conditions. Drivers are responsible for their own safe driving. Always pay attention to your surroundings and drive safely. See *Owner's Manual* for additional limitations and details. **44.** The Pre-Collision System (PCS) with Pedestrian Detection (PD) is designed to determine if impact is imminent and help reduce impact speed and damage in certain frontal collisions involving a vehicle or a pedestrian. PCS w/PD is not a substitute for safe and attentive driving. System effectiveness depends on many factors, such as speed, size and position of pedestrian and weather, light and road conditions. See *Owner's Manual* for additional limitations and details. **45.** Lane Departure Alert with Steering Assist is designed to read visible lane markers under certain conditions. It provides a visual and audible alert and slight steering force when lane departure is detected. It is not a collision-avoidance system or a substitute for safe and attentive driving. Effectiveness is dependent on many factors including road, weather and vehicle conditions. See *Owner's Manual* for additional limitations and details. **46.** Full-Speed Range Dynamic Radar Cruise Control is designed to assist the driver and is not a substitute for safe and attentive driving practices. System effectiveness is dependent on road, weather and traffic conditions. See *Owner's Manual* for additional limitations and details. **47.** Do not rely exclusively on Road Sign Assist (RSA). RSA is a driver support system that utilizes the vehicle's forward-facing camera and navigation system to recognize certain road signs and provide information to the driver via the multi-information display and/or Head-Up Display. Effectiveness is dependent on road, weather, vehicle and sign conditions. Use common sense when using RSA and do not drive distracted. See *Owner's Manual* for additional limitations and details. **48.** Lane Tracing Assist (LTA) is designed to read visible lane markers and detect other vehicles under certain conditions when DRCC is engaged. When potential lane departure is detected, LTA provides a visual warning and either an audible alert or vibration in the steering wheel and can apply a slight steering force. It is not a collision-avoidance system or a substitute for safe and attentive driving. Effectiveness is dependent on many factors including road, weather and vehicle conditions. LTA not available on manual transmissions. See *Owner's Manual* for additional limitations and details. **49.** Dynamic Radar Cruise Control is designed to assist the driver and is not a substitute for safe and attentive driving practices. System effectiveness is dependent on many factors including road, weather and traffic conditions. See *Owner's Manual* for additional limitations and details. **50.** Hill Start Assist Control is designed to help minimize backward rolling on steep ascents. It is not a substitute for safe driving judgment and practices. Factors including speed, grade, surface conditions and driver input can all affect whether HAC will be effective in preventing a loss of control. See *Owner's Manual* for additional limitations and details. **51.** The engine immobilizer is a state-of-the-art anti-theft system that is initiated when you insert your key into the ignition switch or bring a Smart Key fob into the vehicle. The engine will only start if the code in the transponder chip inside the key/fob matches the code in the vehicle's immobilizer. The transponder chip is embedded in the key/fob and can be costly to replace. If you lose a key or fob, your Toyota dealer can help or go to [www.aloa.org](http://www.aloa.org) to find a qualified locksmith in your area who can perform high-security key service. **52.** ToyotaCare covers normal factory scheduled maintenance at no additional cost for two years or 25,000 miles, whichever comes first. Certain models require a different maintenance schedule as described in their *Maintenance Guide*. 24-hour Roadside Assistance is also included for two years, unlimited mileage. Roadside Assistance does not include parts and fluids, except emergency fuel delivery. See Toyota dealer for details and exclusions. Valid only in the continental U.S. and Alaska. **53.** The universal tablet holder is intended for passengers only. Drivers should always be sure to obey traffic regulations and maintain awareness of the road and traffic conditions at all times. Use of aftermarket accessories may pose an increased risk of injury to occupants in the event of an accident. Tablet sold separately. **54.** Cargo and load capacity limited by weight and distribution. Always properly secure cargo and cargo area. **55.** 2020 EPA-estimated mileage. Actual mileage will vary. **56.** Remote start/stop not available on manual transmission-equipped vehicles. **57.** Not all smartwatches are compatible with Remote Connect: Samsung Gear, Fitbit, Garmin are not compatible. **58.** iPhone® is a registered trademark of Apple Inc. All rights reserved. **59.** Not available on manual transmission. **60.** This floor mat/floor liner was designed specifically for use in your model and model year vehicle and SHOULD NOT be used in any other vehicle. To avoid potential interference with pedal operation, each mat/liner must be secured with its fasteners. Do not install a floor mat/floor liner on top of an existing floor mat/floor liner. **61.** Genuine Toyota Paint Protection Film by 3M™ is designed for specific sections of the vehicle most prone to chipping and may vary depending on vehicle model. Select applications may require an additional charge. Toyota Genuine Accessory Warranty only applies when installation is performed by a trained Toyota-approved installer. See Toyota dealer for details. **62.** Do not overload your vehicle. See *Owner's Manual* for weight limits and restrictions. Always properly secure cargo and cargo area.

Toyota strives to build vehicles to match customer interest and thus they typically are built with popular options and option packages. Not all options/packages are available separately and some may not be available in all regions of the country. See [toyota.com](http://toyota.com) for information about options/packages commonly available in your area. If you would prefer a vehicle without any or with different options, contact your dealer to check for current availability or the possibility of placing a special order. Color(s) depicted may vary based on multiple factors, including ambient lighting and the format in which it is being viewed (e.g., computer, mobile device or print).

Some vehicles are shown with available equipment. Seatbelts should be worn at all times. For details on vehicle specifications, standard features and available equipment in your area, contact your Toyota dealer. A vehicle with particular equipment may not be available at the dealership. Ask your Toyota dealer to help locate a specifically equipped vehicle.

All information presented herein is based on data available at the time of posting, is subject to change without notice and pertains specifically to mainland U.S.A. vehicles only. Vehicles shown may be prototypes and/or shown with options. Actual models may vary.

## WARRANTIES

Every Toyota Car, Truck and SUV is built to exceptional standards. And that's not idle boasting. We back it up with these Limited Warranty Coverages:

**Basic:** 36 months/36,000 miles (all components other than normal wear and maintenance items).

**Powertrain:** 60 months/60,000 miles (engine, transmission/transaxle, drive system, seatbelts and airbags).

**Rust-Through:** 60 months/unlimited miles (corrosion perforation of sheet metal).

**Emissions:** Coverages vary under Federal and California regulations. Refer to applicable *Warranty and Maintenance Guide* for details.

**Accessories:** For Genuine Toyota Accessories purchased at the time of the new vehicle purchase, the Toyota Accessory Warranty coverage is in effect for 36 months/36,000 miles from the vehicle's in-service date, which is the same coverage as the Toyota New Vehicle Limited Warranty.

For Genuine Toyota Accessories purchased after the new vehicle purchase the coverage is 12 months, regardless of mileage, from the date the accessory was installed on the vehicle, or the remainder of any applicable new vehicle warranty, whichever provides greater coverage.

You may be eligible for transportation assistance if it's necessary that your vehicle be kept overnight for repairs covered under warranty. Please see your authorized Toyota dealership for further details.

For complete details about Toyota's warranties, please visit [www.toyota.com](http://www.toyota.com), refer to the applicable *Warranty and Maintenance Guide* or see your Toyota dealer.



For Toyota Mobility program details, go to [www.toyota.com/mobility](http://www.toyota.com/mobility) or call the Toyota Customer Assistance Center at 1-800-331-4331