

2020
GMC TERRAIN



**LIVE
LIKE A PRO**



TERRAIN DENALI in Graphite Grey Metallic (additional charge; premium paint) shown with available equipment.



As a pro, the status quo is not an acceptable status. Pushing forward and improving on what came before is the only path to real rewards. That's why we've built an SUV that's game for whatever the day demands. With its bold stance, masculine design and two turbocharged engine options, Terrain is the compact SUV that plays big.

Experience the SUV for you—the 2020 GMC Terrain.

DENALI

**SOME MISSION STATEMENTS ARE CARVED IN STONE;
WE USE SHEET METAL, ALUMINUM AND PASSION**

- MULTIDIMENSIONAL GRILLE
- LED HEADLAMPS WITH GMC SIGNATURE C-SHAPE DESIGN
- 19" BRIGHT MACHINED ALUMINUM WHEELS WITH PREMIUM GREY PAINTED ACCENTS
- NEWLY UPGRADED PREMIUM SUSPENSION



TERRAIN DENALI in Graphite Grey Metallic (additional charge; premium paint).



TERRAIN DENALI in Taupes/Light Platinum shown with available equipment.

SETTLE IN, BUT NEVER SETTLE



TERRAIN OFFERS AN ARRAY OF STANDARD PREMIUM MATERIALS AND EQUIPMENT:

- LEATHER-WRAPPED STEERING WHEEL
- AUTHENTIC ALUMINUM TRIM
- SOFT-TOUCH INSTRUMENT PANEL
- VENTILATED FRONT SEATS (DENALI ONLY)
- HEATED SECOND-ROW OUTBOARD SEATS (DENALI ONLY)



Terrain's cabin welcomes you with a leather-wrapped steering wheel, authentic aluminum trim and a soft-touch instrument panel to create a premium environment no matter which trim level you choose. To further enhance your experience, heated and ventilated front seats are available.

TERRAIN SLT ELEVATION EDITION in Ebony Twilight Metallic (additional charge; premium paint) shown with available equipment.



LEARN MORE

DOESN'T NEED CHROME TO SHINE



- | 19" GLOSS-BLACK PAINTED ALUMINUM WHEELS
- | DARKENED GRILLE
- | BLACK MIRROR CAPS AND ROOF RAILS
- | BLACK EXTERIOR ACCENTS AND TRIM BADGING

The Terrain Elevation Edition goes all in with a bold presence—telling the world that something unique is headed its way. Choose your Elevation in either SLE or SLT trims.

EVERY ROAD TRIP STARTS WITH A GREAT SOUNDTRACK



- APPLE CARPLAY™¹ COMPATIBILITY
- ANDROID AUTO™² COMPATIBILITY
- BLUETOOTH®³ CONNECTIVITY
- UP TO SIX USB PORTS⁴ ARE AVAILABLE
- NAVIGATION⁵ WITH REAL-TIME TRAFFIC UPDATES⁶ IS AVAILABLE
- BOSE⁷ PREMIUM SOUND SYSTEM IS AVAILABLE

Terrain keeps you and your companions connected, informed and entertained. With Apple CarPlay™¹ and Android Auto² compatibility, your favourite tunes travel wherever you go.



¹Vehicle user interface is a product of Apple[®] and its terms and privacy statements apply. Requires compatible iPhone[®] and data plan rates apply. Apple CarPlay is a trademark of Apple, Inc. Siri, iPhone and iTunes are trademarks of Apple, Inc., registered in the U.S. and other countries. ²Vehicle user interface is a product of Google[™] and its terms and privacy statements apply. Requires the Android Auto app on Google Play and an Android[™]-compatible smartphone running Android 5.0 or higher. Data plan rates apply. Android Auto is a trademark of Google LLC. ³Visit my.gm.ca/gmc/en/learnabout/bluetooth for more information. Full Bluetooth feature functionality varies by device, model and/or vehicle configuration, and software version. Bluetooth is a registered trademark of Bluetooth SIG, Inc. ⁴Not compatible with all devices. ⁵At time of printing, detailed map coverage is available for most major urban areas of the United States and for certain metropolitan areas of Canada (Vancouver, Calgary, Edmonton, Winnipeg, Windsor, London, Toronto, Ottawa, Montreal, Quebec City and Halifax). Coverage is significantly limited outside these areas. ⁶Requires subscription to OnStar Guidance Plan, Premium Access Plan or Navigation Add-On. Connected Navigation and Real-time Points of Interest (POI) only available on properly equipped vehicles. Services are subject to user terms and limitations and vary by model and/or vehicle configuration. Visit onstar.ca for more details. ⁷Bose is a registered trademark of Bose Corporation.

2.4 m

FOLD-FLAT SEATS ACCOMMODATE OBJECTS UP TO 2.4 M (8 FT.) LONG.¹

¹Cargo and load capacity limited by weight and distribution.

WE'VE EXPANDED YOUR LIVING ROOM



Terrain comfortably accommodates up to five people and easily allows you to maximize cargo space. A fold-flat front-passenger seat and 60/40 split-folding second-row seats allow you to carry objects up to 2.4 metres (8 feet) long.¹ To help you access all of this space, Terrain offers an available hands-free programmable power liftgate.



TERRAIN DENALI in Graphite Grey Metallic (additional charge; premium paint) shown with available equipment.

TERRAIN: THE NAME SAYS IT ALL



1.5L

TURBO

170 HP/203 LB.-FT. OF TORQUE—

STANDARD SLE

2.0L

TURBO

252 HP/260 LB.-FT. OF TORQUE—

STANDARD SLT/DENALI;

AVAILABLE SLE AWD

TRACTION SELECT SYSTEM

WITH UP TO FOUR MODES TO
HELP MASTER THE CONDITIONS

Terrain offers two ways to power your drive.

The 1.5L Turbo offers efficiency without sacrifice, and the available 2.0L Turbo produces strong acceleration and pulling power with up to 1588 kg (3500 lb.)¹ of max trailering capacity. Transferring all of this performance to the road is a smooth-shifting 9-speed automatic transmission.

Terrain also offers the Traction Select System so you can make real-time adjustments for ever-changing driving conditions. FWD models offer Normal, Snow and available Tow/Haul modes, while available AWD models offer Off-Road and available Tow/Haul modes and an AWD Disconnect mode engineered to optimize efficiency.

¹Requires available Trailering Package. Before you buy a vehicle or use it for trailering, carefully review the trailering section of the Owner's Manual. The weight of passengers, cargo and options or accessories may reduce the amount you can tow.



Terrain is engineered to surround you with innovative safety technologies to help keep you alert and confident.

Every 2020 Terrain now includes GMC Pro Safety, which includes these standard safety technologies: Automatic Emergency Braking, Forward Collision Alert, Lane Keep Assist with Lane Departure Warning, Following Distance Indicator, Front Pedestrian Braking and IntelliBeam headlamps. Additional available technologies include Adaptive Cruise Control—Camera, Lane Change Alert with Side Blind Zone Alert, Rear Cross Traffic Alert, Rear Park Assist and the Safety Alert Seat.

Discover more of Terrain's safety features at gmccanada.ca.

Safety or driver-assistance features are no substitute for the driver's responsibility to operate the vehicle in a safe manner. The driver should remain attentive to traffic, surroundings and road conditions at all times. Visibility, weather and road conditions may affect feature performance. Read the vehicle Owner's Manual for more important feature limitations and information.

A NEW STANDARD: GMC PRO SAFETY

STANDARD GMC PRO SAFETY INCLUDES:

- AUTOMATIC EMERGENCY BRAKING
- FORWARD COLLISION ALERT
- LANE KEEP ASSIST WITH LANE DEPARTURE WARNING
- FOLLOWING DISTANCE INDICATOR
- FRONT PEDESTRIAN BRAKING
- INTELLIBEAM HEADLAMPS

**TRAVEL FAR,
STAY CLOSE**



TERRAIN DENALI in Graphite Grey Metallic (additional charge; premium paint) shown with available equipment.



TERRAIN OFFERS:

- APPLE CARPLAY™¹ COMPATIBILITY
- ANDROID AUTO² COMPATIBILITY
- 4G LTE WI-FI® HOTSPOT³ (DATA PLAN REQUIRED)
- AVAILABLE ONSTAR®⁴ SAFETY & SECURITY PLAN⁵



GMC CONNECTED SERVICES⁴

Your new 2020 Terrain offers a host of in-vehicle benefits. Connected Access⁶ offers the latest technology to help you make the most of every drive—which includes standard connectivity for 10 years and enables services such as Vehicle Diagnostics and Dealer Maintenance Notification. You can also take your ownership experience to new levels by upgrading to other GMC Connected Services.

myGMC™ APP⁷

When you download the available myGMC App, you have access to features like scheduling service, learning how to use your vehicle's technologies and other ways to simplify your ownership experience. When you upgrade to Remote Access⁸, you can remotely start and stop the engine, check fuel levels and even set and share notifications for vehicle arrivals and departures with Vehicle Locate.

Discover how to stay connected at gmccanada.ca.



¹Vehicle user interface is a product of Apple® and its terms and privacy statements apply. Requires compatible iPhone® and data plan rates apply. Apple CarPlay is a trademark of Apple, Inc. Siri, iPhone and iTunes are trademarks of Apple, Inc., registered in the U.S. and other countries. ²Vehicle user interface is a product of Google and its terms and privacy statements apply. Requires the Android Auto app on Google Play and an Android-compatible smartphone running Android 5.0 or higher. Data plan rates apply. Android Auto is a trademark of Google LLC. ³Visit onstar.ca for vehicle availability, coverage maps, details and system limitations. Services and connectivity vary by model and/or vehicle configuration and conditions, as well as geographical and technical restrictions. 4G LTE service available in select markets. Requires active connected vehicle services and a data plan to access the vehicle's built-in Wi-Fi Hotspot. Accessory Power must be active to use the Wi-Fi Hotspot. Data plans provided by AT&T® or its local service provider. Credit card is required for purchase. ⁴Connected vehicle services require a connected vehicle services plan or trial, connected hardware, vehicle electrical system (including battery), wireless service and GPS satellite signal to be available and operating for features to function properly. OnStar acts as a link to existing emergency service providers. Visit onstar.ca for coverage map, details and system limitations. ⁵Requires vehicle electrical system (including battery), wireless service and GPS satellite signal to be available and operating for features to function properly. Services are subject to user terms and limitations and vary by model and/or vehicle configuration, as well as geographical and technical restrictions. Connected Access does not include emergency or security services; service availability requires compatible 4G LTE wireless networks; standard connectivity available to original purchaser for 10 years from the trial activation date for properly equipped vehicles and is not transferable. 4G LTE service available in select markets; requires data plan (credit card needed for purchase) to access the vehicle's built-in Wi-Fi Hotspot; Accessory Power must be active to use the Wi-Fi Hotspot; data plans are provided by AT&T or its local service provider and may change. Vehicle Diagnostics requires enrolment and email address on file; message and data rates may apply; not all issues will deliver alerts; Vehicle Status and On-Demand Diagnostics require a paid service plan. Visit onstar.ca for vehicle availability, coverage maps, details and system limitations. ⁷Available on select Apple® and Android devices. Service availability, features and functionality are subject to limitations and vary by model and/or vehicle configuration, device and the plan in which you are enrolled. Device data connection required. Visit onstar.ca for more details. ⁸Diagnostic capabilities vary by model and/or vehicle configuration and do not cover all vehicle conditions; requires email address on file and enrolment in Vehicle Diagnostics to receive alerts; additional message and data rates may apply. Does not include emergency or security services. Vehicle Locate is designed to locate compatible connected vehicles and capabilities vary by model and/or vehicle configuration and mobile device; available in the U.S., Canada and Mexico only. Remote Key Fob enables services such as remote start (requires GM factory-installed and enabled remote-start system), door lock/unlock (requires automatic locks) as well as lights and horn activation. Services are subject to user terms and limitations. Visit onstar.ca for more details.

THE QUESTION IS, WHICH ONE?

Choose the Terrain that's right for you at gmccanada.ca. All vehicles shown with available equipment.

TERRAIN TRIMS



SLE includes a 1.5L turbocharged engine, Traction Select System, 17" wheels, cloth seats, 7" diagonal infotainment system,¹ Apple CarPlay™² and Android Auto™³ compatibility, fold-flat front-passenger seat, Automatic Emergency Braking,⁴ Front Pedestrian Braking,⁴ Forward Collision Alert,⁴ Lane Keep Assist with Lane Departure Warning,⁴ Following Distance Indicator,⁴ IntelliBeam headlamps, heated front seats and dual-zone automatic climate control.



SLT includes most SLE standard content and adds a 2.0L turbocharged engine, leather-appointed seating, 19" machined aluminum wheels with grey painted accents, fog lamps, LED turn-signal indicators, 8" diagonal infotainment system,¹ interior accent lighting, auto-dimming exterior mirrors, heated steering wheel and hands-free programmable power liftgate.

TERRAIN PACKAGE



DENALI is the ultimate expression of Professional Grade. Terrain Denali includes most SLT standard content and adds LED headlamps, 19" bright machined aluminum wheels with Premium Grey painted accents, Navigation,⁵ Bose⁶ Premium Sound System, ventilated front seats, heated outboard second-row seats, Lane Change Alert with Side Blind Zone Alert,⁴ Front and Rear Park Assist,⁴ the Safety Alert Seat⁴ and Rear Cross Traffic Alert.⁴



ELEVATION EDITION (available on SLE and SLT) includes most SLE or SLT standard content and adds 19" gloss-black painted aluminum wheels, darkened grille, black mirror caps and roof rails, black exterior accents and black exterior trim badging. (SLT shown.)

¹Functionality may vary by model. Full functionality requires compatible Bluetooth® and smartphone, and USB connectivity for some devices. Data plan rates may apply. ²Vehicle user interface is a product of Apple® and its terms and privacy statements apply. Requires compatible iPhone® and data plan rates apply. Apple CarPlay is a trademark of Apple, Inc. Siri, iPhone and iTunes are trademarks of Apple, Inc., registered in the U.S. and other countries. ³Vehicle user interface is a product of Google™ and its terms and privacy statements apply. Requires the Android Auto app on Google Play and an Android™-compatible smartphone running Android 5.0 or higher. Data plan rates apply. Android Auto is a trademark of Google LLC. ⁴Read the vehicle Owner's Manual for important feature limitations and information. ⁵At time of printing, detailed map coverage is available for most major urban areas of the United States and for certain metropolitan areas of Canada (Vancouver, Calgary, Edmonton, Winnipeg, Windsor, London, Toronto, Ottawa, Montreal, Quebec City and Halifax). Coverage is significantly limited outside these areas. ⁶Bose is a registered trademark of Bose Corporation.



TERRAIN DENALI in Ebony Twilight Metallic (additional charge; premium paint) shown with available equipment.

COLOUR YOUR WORLD

EXTERIOR

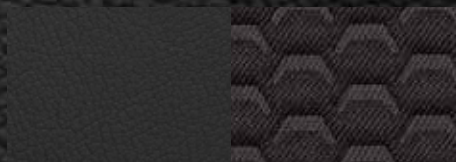


¹Extra-cost colour. ²Not available on SLE. ³Not available on Denali.

INTERIOR

COLOURS

CLOTH

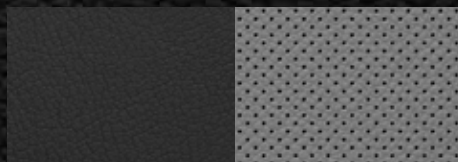


Jet Black/Jet Black — Standard on SLE



Jet Black/Medium Ash Grey — Standard on SLE

LEATHER APPOINTMENTS



Jet Black/Medium Ash Grey Perforated — Standard on SLT



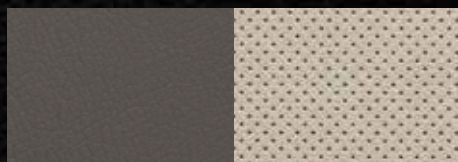
Jet Black/Jet Black Perforated — Standard on SLT



Jet Black/Brandy Perforated — Standard on SLT



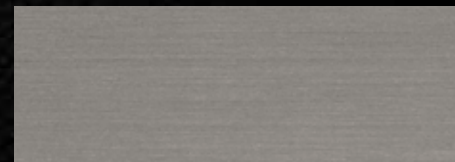
Jet Black/Jet Black Perforated — Standard on Denali



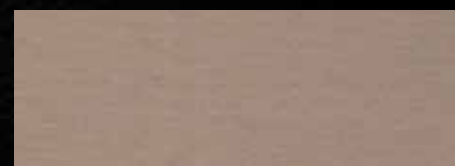
Taupe/Light Platinum Perforated — Standard on Denali

DETAILS

FINISHES



Axiom Aluminum — Standard on SLE/SLT



Burnished Aluminum — Standard on Denali

DOOR/CONSOLE ACCENTS



Timberline — Standard on SLE



Luxury Brown — Standard on SLT



Tech Twill — Standard on SLT¹



Siberian Elm Wood Tone — Standard on Denali

¹Included with Jet Black/Brandy interior.

DESIGNED FOR DISTINCTION



17" Aluminum Silver Painted (RSB) — Standard on SLE



18" Aluminum Silver Painted (RSX) — Available on SLE



19" Gloss-Black Painted Aluminum (PJM) — Standard on Elevation Edition

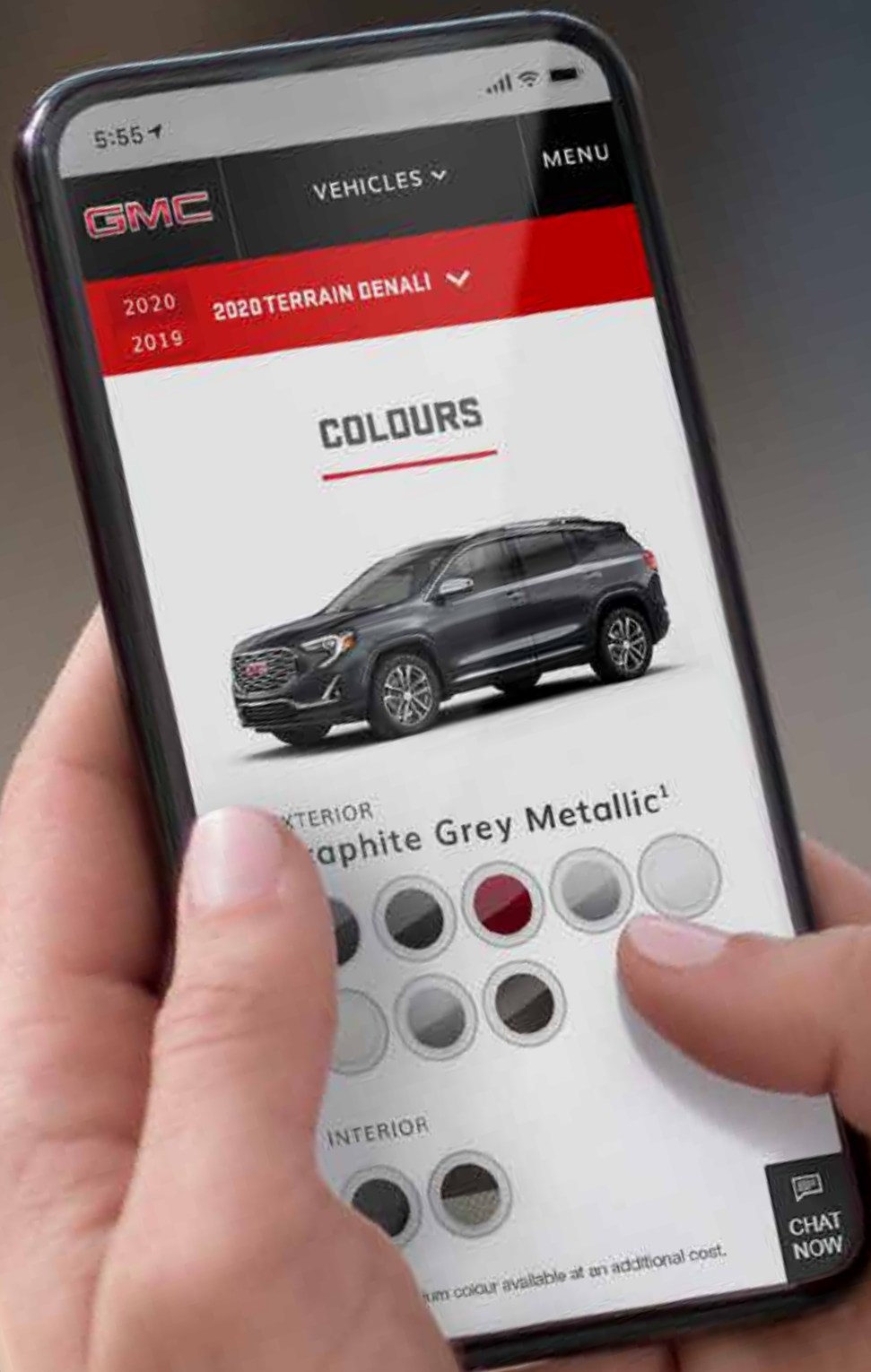


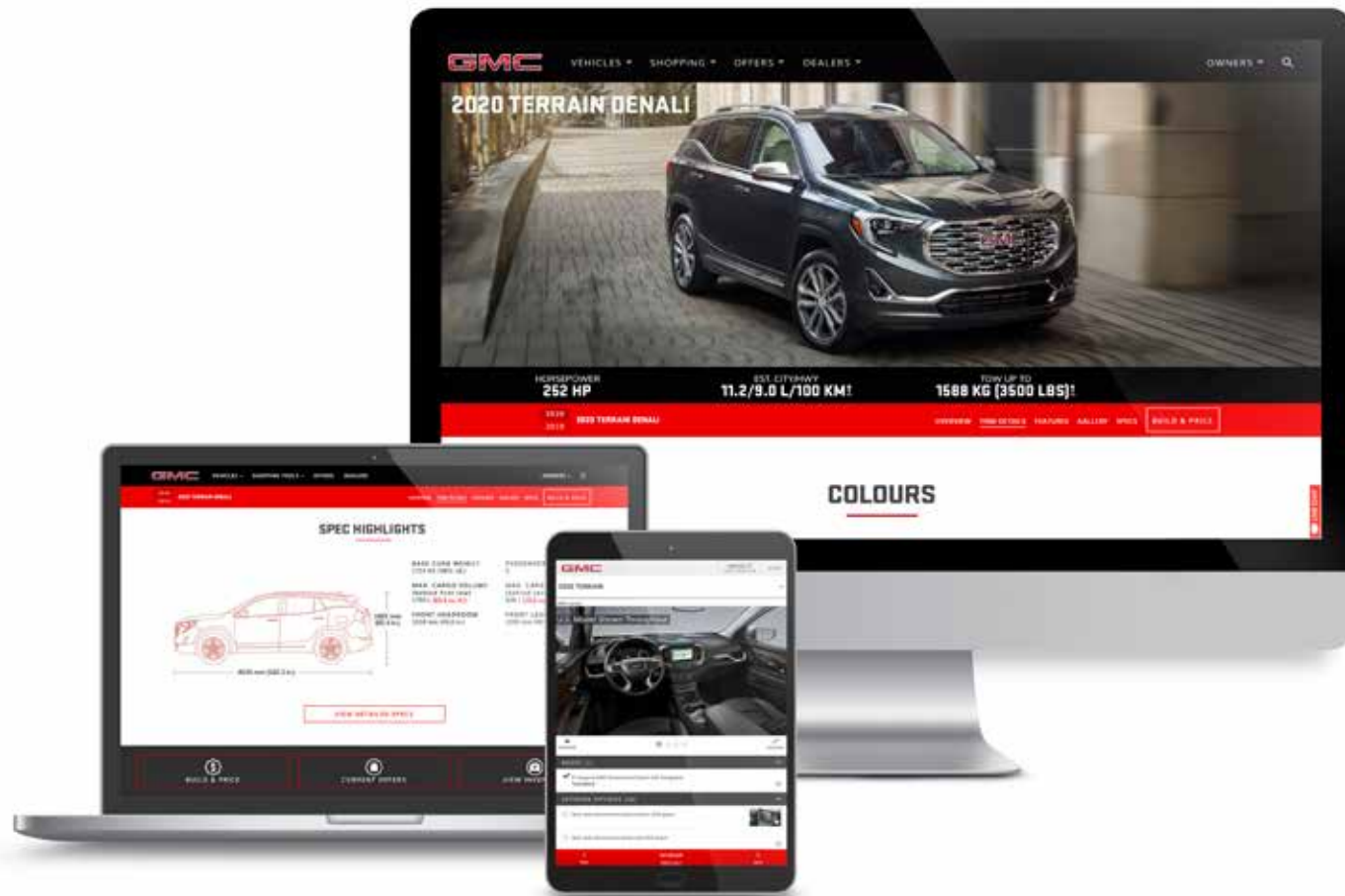
19" Machined Aluminum With Grey Painted Accents (PJH) — Standard on SLT



19" Bright Machined Aluminum With Premium Grey Painted Accents (RT7) — Standard on Denali

YOUR TERRAIN STARTS HERE





GMC's smart, comprehensive online tools elevate your shopping experience. Learn more about Terrain's features, find the model that's right for you and sign up for email updates at gmccanada.ca.

**PUT YOUR
EXCLAMATION POINT ON IT**



TERRAIN DENALI in Ebony Twilight Metallic (additional charge; premium paint) shown with dealer-installed accessories.



GMC Accessories¹ allow you to personalize your Terrain—inside and out. They're engineered and tested to meet our Professional Grade standards, as well as your own.

Find a full selection of Terrain accessories at gmccanada.ca/accessories.

¹Accessory Warranty Coverage, if any, varies. See your GM Warranty Booklet or GM dealer for details.

PROFESSIONAL GRADE



SIERRA HEAVY DUTY

CANYON

SIERRA

Canyon colour shown has limited availability.

IS OUR DNA



YUKON



TERRAIN



ACADIA

PEACE OF MIND, STANDARD WITH EVERY GMC TERRAIN

Experience the GMC comprehensive coverage, warranty and protection program that comes standard with every new 2020 GMC Terrain purchased or leased in Canada. Simply, it is designed around you, to make it easy to keep your GMC like new—and give you the confidence you deserve when you need it most.

- 2-year/24,000 km¹ Lube-Oil-Filter Maintenance² (limit of two)
- 3-year/60,000 km¹ Base Warranty Coverage³
- 5-year/100,000 km¹ Powertrain Component Warranty Coverage³
- 5-year/100,000 km¹ Courtesy Transportation⁴
- 5-year/100,000 km¹ 24/7 Roadside Assistance⁴
- 6-year/160,000 km¹ sheet metal rust-through perforation coverage³
- 8-year/130,000 km¹ coverage³ on specified major emission components

OTHER OWNERSHIP PRIVILEGES AND PROGRAMS:⁵

- GM Protection Plan (GMPP)—The only extended service plan backed by the resources and commitment of General Motors, GMPP may be purchased at the time of sale or subsequently during the Base Warranty Coverage period.⁶
- Certified Service—With GM-certified technicians and GM-approved parts, nobody knows your GM vehicle better.
- GMC Owner Centre—As an owner, take advantage of the GMC Owner Centre. This online owner's destination gives you access to current offers and helpful resources such as Owner's Manuals. Find out more at gmcowner.ca.

TO HELP YOU PURCHASE OR LEASE A NEW VEHICLE:

- Purchase Financing and Leasing—On-the-spot financing, see dealer for full details.⁷
- GM Student Bonus Program—Students or recent graduates of high school, college or university⁷ may be eligible to receive a Student Bonus vehicle redemption allowance of \$500 or \$750^{5,8} (tax inclusive; purchased vehicle dependant) to use toward the purchase, lease or finance of one eligible new GMC vehicle.
- GM Card—Cardholders may redeem Earnings toward the total purchase price or lease down payment of an eligible new GMC truck or SUV. Restrictions and limitations apply. For full program details,⁸ visit gmccard.ca.

INFORMATION RESOURCES:

You can find more information about these programs from your GMC dealer, or at these information centres:

- The GM website at gmccanada.ca
- The GM Customer Care Centre at 1-800-GM-DRIVE (1-800-463-7483 or 1-800-263-3830 for TDD users)

A WORD ABOUT THIS BROCHURE Some of the equipment shown or described throughout this brochure may be available at extra cost. We have tried to make this brochure comprehensive and factual. We reserve the right, however, to make changes at any time, without notice, in prices, colours, materials, equipment, specifications, models and availability. Specifications, dimensions, measurements, ratings and other numbers in this brochure and other printed materials provided at the dealership or affixed to vehicles are approximations based upon design and engineering drawings and prototypes and laboratory tests. Your vehicle may differ due to variations in manufacture and equipment. Since some information may have been adapted since the time of publication, please check with your GMC dealer for complete details. General Motors of Canada Company reserves the right to lengthen or shorten the model year for any product, for any reason, or to start and end model years at different times.

A WORD ABOUT THIS ASSEMBLY GMC vehicles are equipped with engines and components produced and assembled by different operating units of General Motors, its subsidiaries and suppliers to GM worldwide. We sometimes find it necessary to produce GMC vehicles with different or differently sourced components than originally scheduled. Since some options may be unavailable when your vehicle is assembled, we suggest that you verify that your vehicle includes the equipment you ordered or, if there are changes, that they are acceptable to you.

TRADEMARKS ©2020 General Motors of Canada Company. All rights reserved. The marks appearing in this brochure, including but not limited to: General Motors, GM, GMC, Terrain and their respective logos, emblems, slogans and vehicle model names and body designs; and other marks are trademarks of General Motors and/or General Motors of Canada Company, its subsidiaries, affiliates or licensors. OnStar[®] and the OnStar emblem are registered trademarks of OnStar, LLC. Bluetooth is a registered trademark of Bluetooth SIG, Inc. Bose is a registered trademark of Bose Corporation. Apple CarPlay is a trademark of Apple, Inc. Apple, Siri and iTunes are trademarks of Apple, Inc., registered in the U.S. and other countries. Android, Android Auto and Google Play are trademarks of Google LLC.

¹Whichever comes first. ²Limit of two (2) Lube-Oil-Filter services during the program period. Fluid top-offs, inspections, tire rotations, wheel alignments and balancing, etc., are not covered. Additional conditions and limitations apply. See participating dealer for details. ³Conditions apply. See Warranty Booklet for details. ⁴Conditions apply. See Owner's Manual for details. ⁵Conditions and limitations apply. ⁶Please work with your dealer to select the plan that is suitable for your driving needs. Dealers are free to set their own prices. ⁷Subject to eligibility. ⁸Program subject to change.

DRIVE THE CONVERSATION



GMCCANADA.CA

LIVE
LIKE A PRO

GMC
WE ARE PROFESSIONAL GRADE