



LOREN COOK COMPANY

LOREN COOK COMPANY

CORPORATE OFFICE

  
COOK

2020

Express Guide |  LOREN COOK COMPANY

Category	Page
FEATURES & OPTIONS LEGEND	3
ROOF MOUNT EXHAUST AND SUPPLY FANS	4
WALL MOUNT FANS & VENT SETS	5
INLINE AND CEILING FANS	6
GRAVITY VENTILATORS	7



## COOK 24 HOUR EXPRESS

The first and most successful custom assembly/next day shipping service in the industry.

Many times, the most important fan selection factor is time. Each of the products in this brochure are configurable for horsepower, voltage and speed.

You specify

- ▶ Accessories
- ▶ Motor drives
- ▶ RPM
- ▶ CFM
- ▶ Etc

**Place the order with Cook by 2 p.m. CST and we ship your custom built unit the next business day.**

Compute-a-Fan, the Cook fan selection program, allows selection of these fans based on operating conditions and reflects how accessories affect product availability for this program.

Availability is subject to production capacity, order quantity and accessories.



## 24 HOUR EXPRESS

- ▶ HVAC industry's first and most successful custom assembly, next day shipping service.
- ▶ More than 850 items available.
- ▶ Specify CFM, horsepower, voltage, accessories, etc.
- ▶ Units are custom built, test run and shipped the next working day.



## VARI-FLOW®

- ▶ Cook's offering of EC/PM motors and compatible controls.
- ▶ Superior part-load efficiency and demand-based control.
- ▶ Economical controllability for optimal ventilation at the lowest energy consumption.



## SMOKE CONTROL

- ▶ Cook offers the industry's broadest product selection.
- ▶ Cook pioneered the development of UL's "Power Ventilator for Smoke Control Systems" in 1990.



## UL RESTAURANT EXHAUST

- ▶ UL Listed Power Roof Ventilators for Restaurant Exhaust.
- ▶ Tested to handle grease-laden air at elevated temperatures and during grease flare-up.
- ▶ Designed to meet the National Fire Protection Association (NFPA) Standard 96 installation guidelines.



## SEISMIC

- ▶ Seismic rated fans have been 3<sup>rd</sup> party shake table tested.
- ▶ Tested in accordance to ICC-ES AC156 with an acceleration ranging to 2.5G's (SDS = 2.50).
- ▶ All test accepted by California Office of Statewide Health Planning and Development (OSHPD) as part of their pre-approval program.



## MIAMI-DADE

- ▶ Product designed for high wind velocity weather.
- ▶ Tested and met Miami-Dade County's TAS-201, TAS-202, and TAS-203 criteria.
- ▶ Florida Building Commission approved.



## AMCA

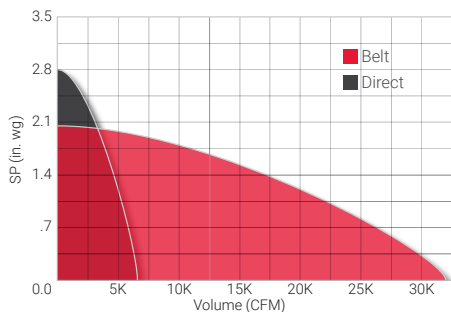
- ▶ Cook products bearing AMCA Certified Ratings label.
- ▶ These products have been tested in Cooks own accredited laboratories and checked by AMCA international.
- ▶ This third-party certification ensures performance as promised.

ICON MAY NOT APPLY TO ALL MODELS. PLEASE SEE PRODUCT CATALOG FOR AVAILABILITY.



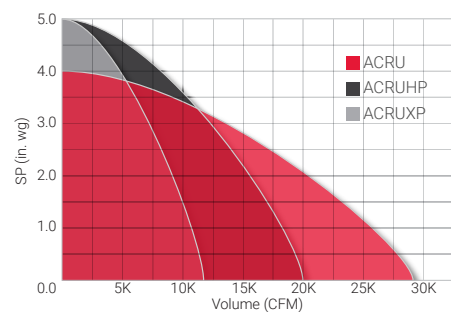
### ACE

Size Range:  
 Belt - 100 to 540  
 Direct - 70 to 180



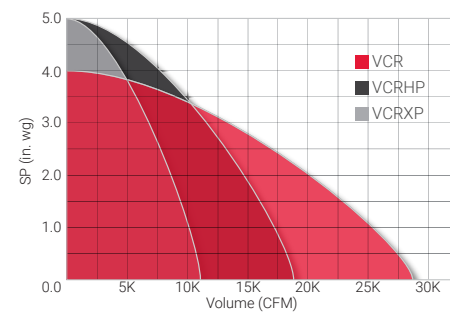
### ACRU

Size Range:  
 Belt - 100 to 490  
 Direct - 70 to 180



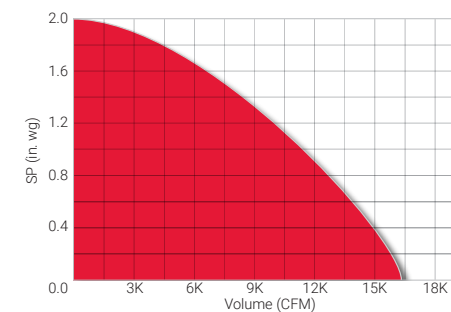
### VCR

Size Range:  
 Belt - 100 to 490  
 Direct - 70 to 180



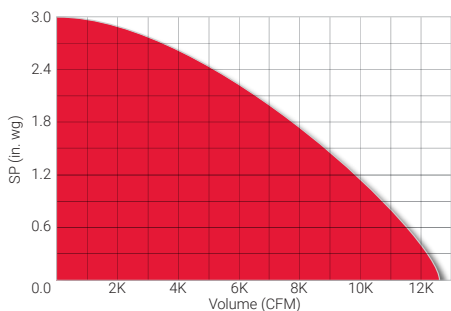
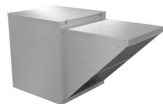
### ASP

Size Range:  
 90 - 200



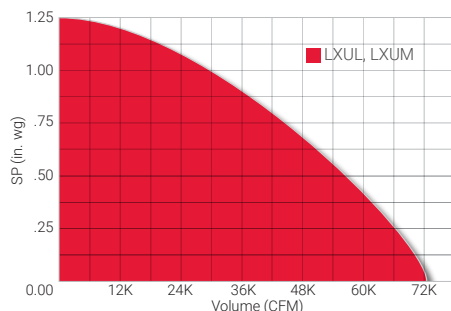
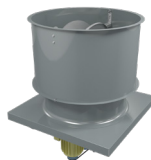
### KSP

Size Range:  
 KSPB - 90 to 200



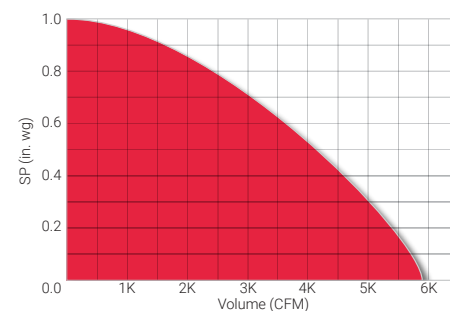
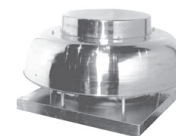
### Low Silhouette

Size Range:  
 20 to 60



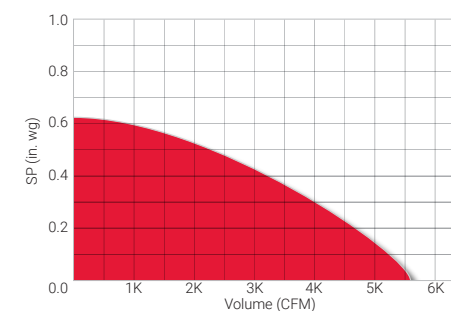
### REBE

Size Range:  
 12 to 24



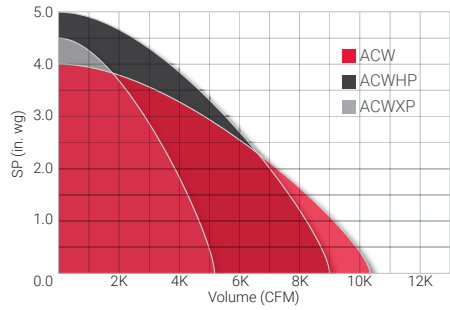
### REBS

Size Range:  
 12 to 24



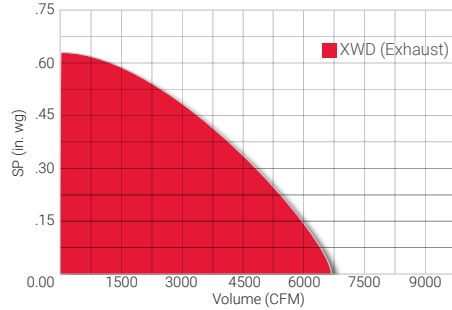
## ACW

Size Range:  
Belt - 100 to 245  
Direct - 70 to 180



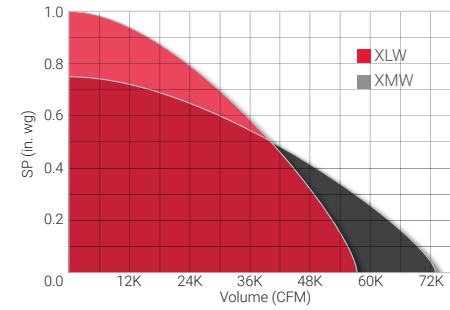
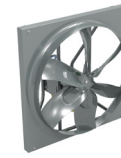
## X Series

Size Range:  
Standard - 8 to 24



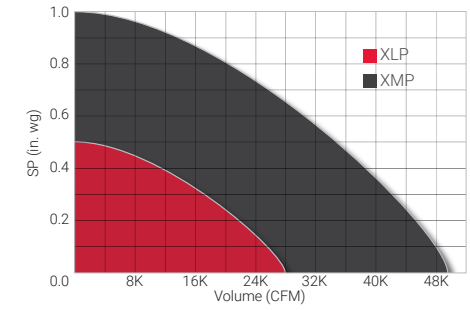
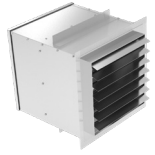
## X. Stream

Size Range:  
20 to 60



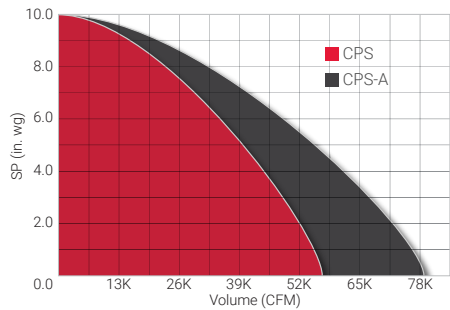
## Packaged X. Stream

Size Range:  
20 to 60



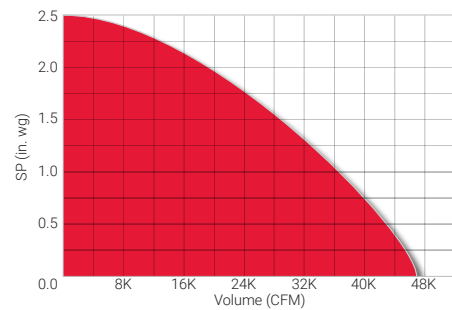
## CPS

Size Range:  
CPS - 60 to 300  
Class I



## CPV

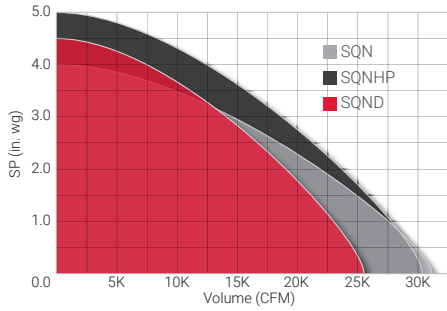
Size Range:  
60 to 300



## SQN

Size Range:

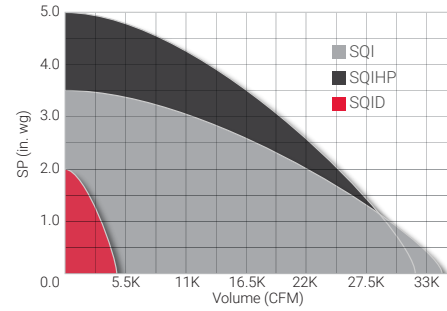
SQN - 60 to 402  
 SQNHP - 135 to 402  
 SQND - 70 to 165



## SQI

Size Range:

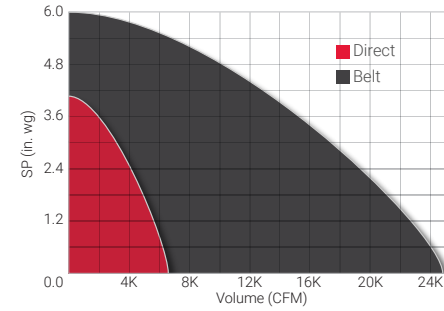
SQI - 90 to 402  
 SQIHP - 135 to 402  
 SQID - 70 to 165



## CV

Size Range:

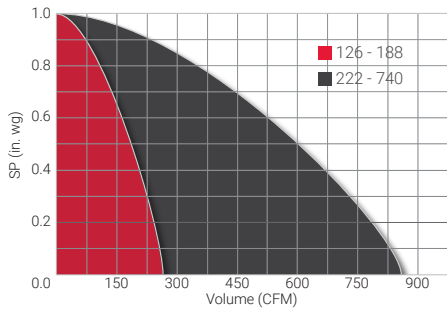
Belt - 10 to 36  
 Direct - 8 to 20



## Gemini

Size Range:

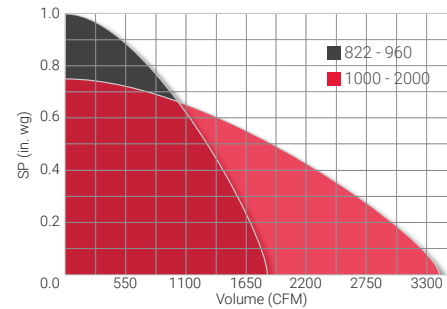
GC - 126 to 740  
 GN - 126 to 740



## Gemini

Size Range:

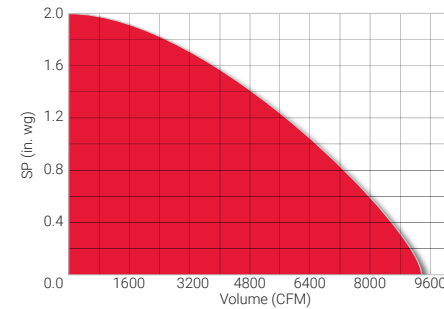
GC - 822 to 2000  
 GN - 822 to 2000



## DB

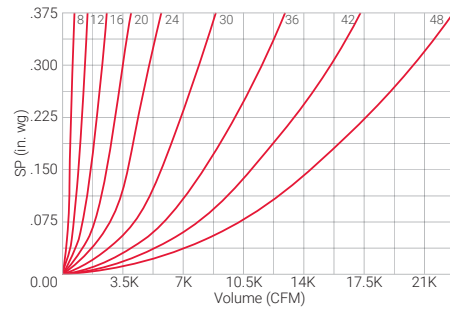
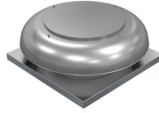
Size Range:

8 to 18



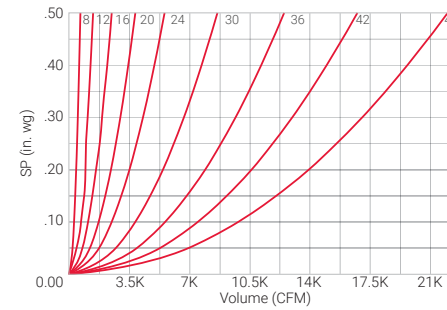
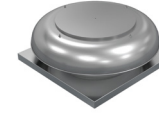
### PR (Intake)

Size Range:  
8 - 48"



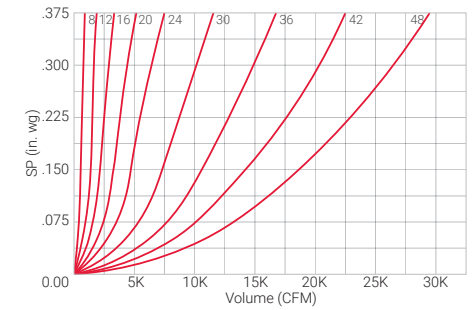
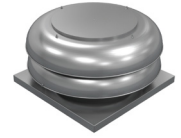
### PR (Relief)

Size Range:  
8 - 48"



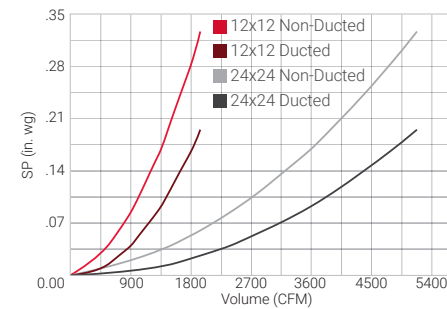
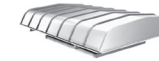
### TR

Size Range:  
8 - 48"



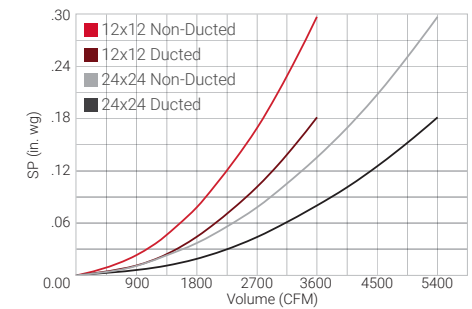
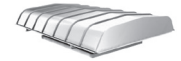
### GI

Size Range:  
12x12, 16x16, 18x18  
24x24, 24x48, 30x30,  
36x36, 36x48



### GR

Size Range:  
12x12, 16x16, 18x18  
24x24, 24x48, 30x30,  
36x36, 36x48





2015 E. Dale St. Springfield, MO 65803 | 417-869-6474 | Fax: 417-862-3820 | [lorencook.com](http://lorencook.com)