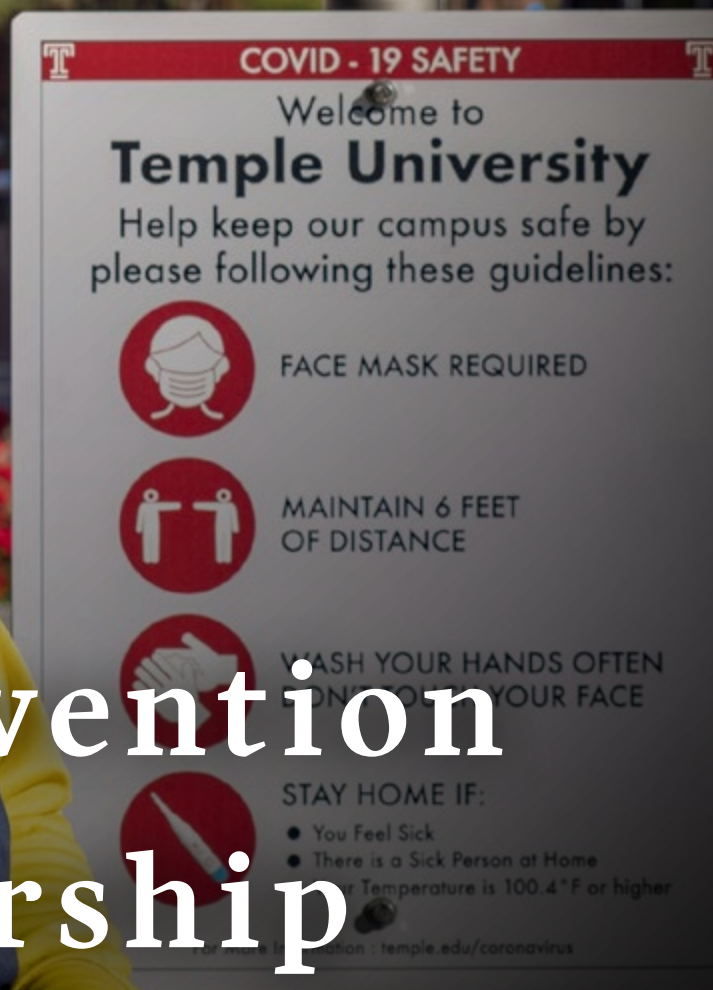




**2020 ANNUAL SECURITY AND  
ANNUAL FIRE SAFETY REPORT**



**COVID - 19 SAFETY**

Welcome to  
**Temple University**

Help keep our campus safe by  
please following these guidelines:

-  **FACE MASK REQUIRED**
-  **MAINTAIN 6 FEET  
OF DISTANCE**
-  **WASH YOUR HANDS OFTEN  
DON'T TOUCH YOUR FACE**
-  **STAY HOME IF:**
  - You Feel Sick
  - There is a Sick Person at Home
  - Your Temperature is 100.4°F or higher

For more information: [temple.edu/coronavirus](http://temple.edu/coronavirus)

prevention  
partnership  
pride





**THIS BOOKLET  
SERVES THESE  
CAMPUSES:**

**Main  
Health Sciences Center  
Center City**

**Podiatry  
Ambler  
Fort Washington**

**Harrisburg  
Rome  
Japan**

## TABLE OF CONTENTS

**CAMPUS SAFETY AND SECURITY ..... 3**  
 Purpose and Overview ..... 3  
**CAMPUS SAFETY SERVICES OVERVIEW ..... 5**  
 Temple Police Locations ..... 5  
 Relationship with Local Law Enforcement ..... 5  
 Monitoring Criminal Activity at Off-Campus Locations ..... 6  
 Procedures to Report Criminal Activity or  
 Other Emergencies Occurring on Campus ..... 6  
     Reporting an Emergency ..... 6  
     Reporting of Sexual Misconduct ..... 7  
 Campus Security Authority (CSA) ..... 8  
 Timely Warnings ..... 9  
 Emergency Response and Evacuation Procedures ..... 9  
     Procedures to Notify the Campus Community ..... 9  
     Emergency Notification ..... 10  
     Dissemination of Emergency Information ..... 10  
     General Evacuation Procedure ..... 10  
     Shelter-in-Place Procedure ..... 11  
     Lockdown ..... 11  
     Testing ..... 12  
 Access to Campus Facilities ..... 14  
     Campus Patrols ..... 14  
 Campus Security Features ..... 14  
     Parking ..... 15  
     Bike Registration ..... 15  
 Safety Awareness Programs ..... 16  
 Crime Prevention and Risk Reduction Programs ..... 17  
 Safety Policies for On-Campus Student Housing Facilities ..... 19  
 Safety Initiatives in On-Campus Student Housing Facilities ..... 21  
 Missing Student Notification ..... 21  
 Drug and Alcohol Use ..... 23  
     Medical Amnesty ..... 23  
 Drug and Alcohol Education ..... 23  
 Drug and Alcohol Counseling and Treatment Programs ..... 24  
 Weapons Policy ..... 25  
 Temple's Policy on Sexual Misconduct ..... 25  
     Definitions ..... 25  
     Temple's Policies ..... 27

Educational Programming and Training ..... 27  
 Reporting Sexual Assault, Domestic Violence, Dating Violence,  
 Stalking, and Sexual Exploitation ..... 29  
 Student Conduct Proceedings in Cases of Sexual Misconduct ..... 32  
 Prior Student Conduct Proceedings in Cases of Sexual Misconduct .. 34  
 Assistance for Individuals who Experience Sexual Misconduct ..... 35  
 Information and Assistance for Respondents ..... 36  
 Information Regarding Registered Sex Offenders ..... 36  
 Policies Concerning Students/Employees with Criminal Records ..... 36  
**FIRE SAFETY ..... 38**  
 Fire Safety Features in On-Campus Student Housing Facilities ..... 38  
     Prohibited Items ..... 39  
     Smoking and Tobacco Use ..... 39  
     Procedures for Evacuating Student Housing in Case of Fire ..... 39  
     Fire Safety Education ..... 39  
     Reporting a Fire "After the Fact" for Statistical Purposes ..... 40  
     Future Improvements in Fire Safety ..... 40  
**FIRE STATISTICS ..... 41**  
**CRIME RATES AND STATISTICS ..... 43**  
**IMPORTANT CONTACT INFORMATION ..... 63**



**Front cover:**  
 Police Officer Elijah  
 Lewis greets the Temple  
 community and reminds  
 everyone to stay safe.

**Back cover:**  
**Liaccouras Walk**

**Photographers:**  
 Nicholas Doucet  
 Ryan S. Brandenburg  
 Joseph V. Labolito  
 Betsy Manning

**Layout:** Pryme Design



## CAMPUS SAFETY AND SECURITY

### Purpose and Overview

Temple University is a comprehensive public research university with more than 28,500 enrolled undergraduate students and more than 10,000 enrolled graduate students. Temple comprises nine campuses within Pennsylvania and worldwide, and has been consistently recognized as one of the most diverse universities in the nation. Student life offers initiatives, programs, activities and services that engage the entire campus community in order to help students attain their educational, personal and career goals in a nurturing and safe campus environment.

The information contained in this publication is compiled in cooperation with the Department of Campus Safety Services, the Office of University Housing and Residential Life, the Office of the Fire Marshal, the Division of Student Affairs, the Office of Facilities Management, the Office of University Counsel, the Title IX Office, and local law enforcement agencies. This publication is prepared in accordance with the Jeanne Clery Disclosure of Campus Security Policy and Campus Crime Statistics Act (the “Clery Act”) and is provided as a safety service to the Temple community. The Clery Act requires schools to make timely warnings to the campus community about crimes that could pose a serious and continuing threat to students and employees occurring on campus and to make available an annual report containing crime statistics and policies and procedures related to campus safety. Each member of the Temple community receives an electronic notification through e-mail with

a direct web link to this report. The report can also be accessed electronically through the Campus Safety Services website at [safety.temple.edu](https://safety.temple.edu). Prospective students and prospective employees will be directed to the Annual Safety and Annual Fire Safety Report. Printed copies are available upon request by calling Campus Safety Services at (215) 204-7900 or through email at [police@temple.edu](mailto:police@temple.edu).

All criminal incidents occurring on Temple’s campus should be reported to the Department of Campus Safety Services, which oversees Temple Police, for appropriate response and documentation. Campus Safety Services works closely with, and reports all criminal incidents to, local police departments surrounding each campus. These local police departments supply Campus Safety Services with reports of incidents for the area surrounding each campus. Yearly statistical information on criminal incidents is reported to the Pennsylvania State Police for publication in the Pennsylvania Uniform Crime Report.

Campus Safety Services provides the daily crime log of incidents reported to Temple Police to *The Temple News* (the student newspaper); to Strategic Marketing and Communications; to residential life staff for distribution to all on-campus student housing facilities; and to various administrative offices around campus. The Temple community also has access to the daily crime log at the Campus Safety Services website ([safety.temple.edu](https://safety.temple.edu)) and the most recent 60-day period of reported incidents is available for public inspection at Temple Police Headquarters. Portions of the log older than 60 days are available within two business days of a request for public inspection.



**“Perseverance conquers” is Temple University’s official motto.**

**Our staff (Allied Universal Security Officer Gloria Chappelle, Temple Security Officer Janet Brown Edmunds, Police Officer Elijah Lewis, and Police Officer Sean Rickey) are ready to assist you.**

---

**The Department of Campus Safety Services provides service to the Temple community 24 hours a day, 365 days a year.**

**The department monitors security operations for more than 135 buildings, spanning approximately 330 acres.**

**Temple Police manages sites around the Main Campus, as well as the Health Sciences Center and Ambler campuses.**

# CAMPUS SAFETY SERVICES OVERVIEW

## Temple Police Locations

The Department of Campus Safety Services provides service to the Temple community 24 hours a day, 365 days a year. The department monitors security operations for more than 135 buildings, spanning approximately 330 acres. Temple Police manages sites around the Main Campus, as well as the Health Sciences Center and Ambler campuses.

- **Temple Police Administrative Offices**  
1101 W. Montgomery Avenue, Philadelphia
- **Temple Police Patrol/Police Headquarters**  
1801 N. 11th Street, Philadelphia
- **Temple Police Center Station**  
Corner of Beasley and Polett Walks, Philadelphia
- **Temple Public Safety Station**  
1513 Cecil B. Moore, Philadelphia
- **Temple Police Mini Station**  
1600 N. Park Avenue, Philadelphia
- **Temple Police at Health Sciences Center Campus**  
Parkinson Pavilion, Broad and Tioga Streets, Philadelphia
- **Temple Police at Ambler Campus**  
Bright Hall, Upper Dublin, Pennsylvania

On a typical day, Campus Safety Services staff are visible around campus directing traffic, responding to inquiries, conducting prevention programs, and interacting with the community in various other functions. Officers maintain positive relations with the Temple community in their assigned sectors. They are highly visible, wearing distinctive uniforms, and are available to respond to situations.

See the **Campus Patrol** section on page 14 for additional information about each campus

## Relationship with Local Law Enforcement

Campus Safety Services maintains a collaborative network with the Philadelphia Police Department, Southeastern Pennsylvania Transportation Authority (SEPTA) Police Department, Pennsylvania State Police, Upper Dublin Police Department (Ambler Campus) and other law enforcement agencies. Temple Police maintains memoranda of understanding with both the Philadelphia Police Department and with the Upper Dublin Police Department.

Temple Police is currently staffed by approximately 120 sworn police officers (including supervisors and detectives) patrolling area campuses. Each officer is a Pennsylvania-certified law enforcement officer who has received state-mandated police recruit training at an accredited police academy and is authorized to enforce the law and make arrests similar to any municipal police department officer. Annually, Temple Police are certified through state-mandated, in-service training in accordance with the Municipal Police Officers' Education and Training Commission (MPOETC). Training modules include updates to the Pennsylvania Crimes Code, Vehicle Code, and Rules of Criminal Procedure. Other sessions focus on the core concepts of procedural justice and police legitimacy, and address how to build respectful and effective relationships with the community while improving officer safety. Additional training includes certification in C.P.R. and the use of Automated External Defibrillators.

Temple Police also utilize an integrated Computer Aided Dispatch (CAD) system directly linked to the Philadelphia Police Communication Center's CAD system. This technology allows Campus Safety Services operators to view real-time information and dispatch personnel. Dispatchers have multiple monitors that give them the ability to oversee all systems from their stations. Campus Safety Services dispatchers may monitor Philadelphia Police activity in the area of university campuses and property within the City of Philadelphia through interface with the Philadelphia Police CAD.



**At the 1801 N. 11th Street site and other locations, Campus Safety Services is here to assist you.**

These locations function as resource centers where individuals can interact with Campus Safety Services representatives, obtain safety awareness information, campus maps and ID holders, and learn about departmental programs and services.





**Our officers and health care workers acknowledge each other's service to address community safety.**

In addition to police services, Campus Safety Services also has a Security Division that includes approximately 43 Temple security officers and approximately 400 full and part-time security officers from Allied Universal Security Services, a contract security company. Approximately 75 of these security officers are assigned to maintain security in on-campus student residence halls. Security officers receive annual training in the procedures for residence halls access; including the use of card readers, enforcement of the guest policy, guest sign-in, appropriate screening of intoxicated persons by police and/or medical personnel, and assisting with evacuations and other emergencies. Security officers complete a training program that provides them with the essential tools and information needed to perform their job efficiently, including Clery Compliance.

## Monitoring Criminal Activity at Off-Campus Locations

When the Temple community is affected by off-campus criminal activity, Temple police officers may assist local law enforcement agencies with their investigation. The Philadelphia Police Department routinely works and communicates with Temple Police on serious incidents occurring in the immediate neighborhood and areas surrounding Temple's patrol areas. Temple University does not operate any off-campus housing or off-campus student organization facilities at its Main Campus.

## Procedures to Report Criminal Activity or Other Emergencies Occurring on Campus

### REPORTING AN EMERGENCY

Temple students, faculty, staff, and visitors are encouraged to promptly and accurately report all criminal activity and other emergencies occurring on campus to Temple Police or local law enforcement. Crimes or incidents occurring on the Main, Fort Washington, Health Sciences Center, Center City, Podiatry, and Ambler campuses may be reported to Temple Police by dialing **1-1234 (from a campus phone) or (215) 204-1234 (from a non-campus phone)**.

Crimes and incidents occurring at other U.S. campuses, off-campus, or at Temple's Administrative Services Building (TASB) should be reported to local law enforcement at 9-1-1.

Temple University's Main, Health Sciences Center, and Ambler campuses have Code Blue Emergency phones. There are approximately 90 phones spread throughout these Temple University campuses. In case of an emergency, press the red button; this will activate the system causing bright blue strobe flashes and a call will go directly to Temple Police.

Designated first aid responders for Temple University's Main, Health Sciences Center, and Ambler campuses may include the following individuals: Temple Police officers, security personnel, fire marshals, and Temple University Emergency Medical Services.

First responders for Temple's Podiatry and Center City campuses, and TASB will be the City of Philadelphia's Police and Fire Departments.

Emergencies occurring at the Fort Washington or Harrisburg campuses, or off-campus should be reported to local law enforcement at 9-1-1.

Emergencies at Temple University Japan should be reported to local authorities as follows:

**Fire or ambulance:** 1-1-9

**Police:** 1-1-0 or 03-3503-8484 (weekdays 9:00 a.m.–5:00 p.m.)

Emergencies at Temple University Rome should be reported to local authorities as follows:

**Ambulance:** 1-1-8

**Police:** 1-1-3

**Fire:** 1-1-5

All crimes, emergencies, and other serious incidents reported to Temple Police are promptly responded to and documented by a Temple Police officer or detective. To ensure that a record is made of each reported crime, telephone calls to Temple Police, (215) 204-1234, are electronically recorded. Temple Police and security officers record detailed facts of crimes and incidents

on a standardized police report that is used throughout Campus Safety Services. As appropriate, crimes will be documented in a Philadelphia Police report and sent to the district of occurrence. On a monthly basis, Temple Police reports crime statistics to the Pennsylvania State Police.

If you are the victim of a crime and do not want to pursue action through the Student Conduct Code or the criminal justice system, you may still want to consider making a confidential report. Temple Police can file a report on the details of the incident without revealing your identity. The purpose of a confidential report is to comply with your wish to keep the matter confidential, while taking steps to ensure the future safety of yourself and others. This allows the university to keep an accurate record of the number of incidents involving students, determine crime patterns in a particular area, and alert the campus community to potential danger. Reports filed in this manner are counted in the annual crimes statistics for the university. In certain circumstances, the university may have to take action to protect you or the community and other members of the Temple community may be authorized to address the situation. Every effort will be made to act discretely and honor a request for confidentiality.

**Confidential, voluntary reports by victims or witnesses of crime may be made by calling (215) 204-6493** (available 24 hours), by e-mail at [police@temple.edu](mailto:police@temple.edu), or on Campus Safety Services' website on the "[Submit a Tip](#)" link. You are not required to provide your identity to submit such a report.



**Your safety starts with you ... we are here to guide you. (From left to right): Corporal Mark Craney, Deputy Chief Denise Wilhelm, Police Officer Elijah Lewis, Police Officer James Hooper, Police Officer Emily Grawehr and Police Officer Andrew McCloskey.**

## REPORTING OF SEXUAL MISCONDUCT

Sexual misconduct includes sexual assault, domestic violence, dating violence, stalking, and sexual exploitation, and other forms of sexual harassment.<sup>1</sup>

Students can report incidents confidentially to:

- Tuttleman Counseling Services  
Telephone: (215) 204-7276  
<https://counseling.temple.edu/>
- Student Health Services  
Telephone: (215) 204-7500  
<http://www.temple.edu/studenthealth/>
- WOAR – Philadelphia Center Against Sexual Violence  
Telephone: (215) 985-3333  
<http://www.woar.org>

Employees can report incidents confidentially to:

- Employee Health Services  
Telephone: (215) 204-2679  
<http://www.temple.edu/employeehealth/>
- Employee Assistance Program  
Telephone: 1-888-267-8126  
<http://www.temple.edu/hr/departments/benefits/eap.htm>

Students and employees can report incidents confidentially to:

- The Psychological Services Center (PSC)  
Telephone: (215) 204-7100 or e-mail [psc@temple.edu](mailto:psc@temple.edu) to request an appointment.

The PSC is located in Temple University's Entertainment and Community Education Center (ECEC) at 1509 Cecil B. Moore Ave., Suite 420, Philadelphia, PA 19121.

- Temple's Title IX Anonymous Online Reporting System is available at <https://www.pavesuite.com/Temple/PublicPortal/HomePage>
- Anonymous reports of sexual misconduct can also be made to Temple's Ethics and Compliance Helpline at <https://www.temple.edu/about/ethics-compliance/helpline>

<sup>1</sup> As defined by Temple University's Policy on Preventing and Addressing Sexual Misconduct. For additional information, see p. 27 of this report.

## Campus Security Authority (CSA)

A Campus Security Authority (CSA) is an individual or organization who is associated with the university that has significant responsibility for student and campus activities.

Individuals at Temple who meet the criteria for being CSAs include, but are not limited to:

- A dean of students or vice president who oversees student housing, a student center, or student extra-curricular activities
- A director of athletics or a team coach
- A faculty advisor to a student group
- Residential Life staff members including student resident assistants (RA)
- A coordinator of Greek life
- A Title IX coordinator
- An ombudsperson
- The director of a campus health or counseling center when acting in an administrative capacity
- Members of a sexual assault response team (SART)
- Temple Police, as well as campus security personnel

A crime is reported when a victim, witness, other third party, or even the offender brings it to the attention of a CSA or local law enforcement personnel. It does not matter whether or not the individuals involved in the crime or reporting the crime are associated with the university. If a CSA receives the crime

information and believes it was provided in good faith, they should report it to Temple Police. The report should include date and location, and personally identifying information, such as name and contact information, as appropriate and with the victim's consent. In "good faith" means there is a reasonable basis for believing that the information is not simply rumor or hearsay. CSAs have an important role in ensuring that Temple University complies with the Clery Act. Crime reports submitted by CSAs assist the university in fulfilling its responsibility to annually disclose accurate crime statistics and issuing or facilitating the issuance of timely warnings or emergency notifications for crimes occurring on campus that pose a serious or continuing threat to the campus community.

There are two (2) groups of individuals who, although they have significant responsibilities for student and campus activities, are not considered CSAs under the Clery Act. They are pastoral counselors and professional counselors. A pastoral counselor is defined as a person who is associated with a religious order or denomination, is recognized by that religious order or denomination as someone who provides confidential counseling, and is functioning within the scope of that recognition as a pastoral counselor. A professional counselor is defined as a person whose official responsibilities include providing mental health counseling to members of the institution's community and who is functioning within the scope of their license or certification. This definition applies to professional counselors who are employees of Temple as well as counselors who are not employees of Temple but are under contract to provide counseling at the institution.

**Dean of Students Stephanie Ives listens as a parent offers feedback.**







**Dispatcher Kathy Thompson demonstrates intense focus as she multitasks in the Communication Center.**

## Timely Warnings

Temple University, in a manner that is timely and will aid in the prevention of similar crimes, will report to the campus community certain crimes occurring in the designated reporting areas required by the Clery Act: (1) on campus (2) on public property within or immediately adjacent to the campus and (3) in or on non-campus buildings or property that the institution owns or controls. Timely warnings will be issued for certain crimes reported to Temple Police or local police agencies that are considered by university officials to represent a serious or continuing threat to students and employees so that they can take protective measures. Additional information may be provided as it becomes available.

Timely warnings will keep victim identities confidential to the fullest extent possible.

The following methods may be used to communicate a timely warning: an e-mail to students, faculty, and staff; a posting in campus buildings; and/or providing information by other electronic means. If there is an immediate threat to the health or safety of students and employees occurring on campus, Temple will follow its emergency notification procedures described in subsequent sections, which will serve as a timely warning.

Effective and reliable mass notification has become a fundamental aspect of university security. In the event of an actual emergency, Temple students and employees will be notified through text messaging, e-mail, and/or phone calls. Students, faculty, and staff should take responsibility for regularly checking their university e-mail accounts. By default, emergency notification will be sent

directly to their mobile phones based on telephone numbers registered under Personal Information “Mobile – Personal” and/or “Mobile – Work” in TU portal ([tuportal.temple.edu](http://tuportal.temple.edu)).

## Emergency Response and Evacuation Procedures

Temple University recognizes its responsibility to provide accurate and timely information to the campus community during emergencies. The Emergency Communication Policy ([policy no. 04.61.01](#)) establishes the approval process, criteria, and method for communicating with students, faculty, and staff in the event of an emergency at any of its locations.

### PROCEDURES TO NOTIFY THE CAMPUS COMMUNITY

Upon confirmation of a significant emergency or dangerous situation by Temple Police or authorized personnel involving an immediate threat to the health or safety of students or employees on campus, the President and the Executive Director of Campus Safety and/or their designees will determine the type and content of the notification to the Temple community, and will initiate the campus notification procedures. Temple University will, without delay and taking into account the safety of the community, determine the content of the notification, determine the appropriate segment of community to receive the notice and initiate the notification system, unless doing so will, in the professional judgment of responsible authorities, compromise efforts to assist a victim or to contain, respond to, or otherwise mitigate the emergency.

## EMERGENCY NOTIFICATION

Temple University has various systems in place for communicating information to students, faculty, and staff. The following details the types of notification and criteria for use:

**TUalert:** Used to communicate information regarding an incident that occurs on campus that is deemed an emergency requiring immediate action on the part of the campus community. This is an e-mail, a text message to registered mobile phones, and/or a phone call.

**TUsiren:** Used only to alert the campus community of a threat imminent to, or occurring on campus that is deemed a catastrophic and life-threatening situation (e.g. severe weather, release of hazardous material, or life-threatening active shooter incident). The siren will indicate the need for all to shelter-in-place or lockdown securely within buildings, unless otherwise directed.

Messages about criminal activity generally will not trigger an emergency communication unless it is determined that there is an immediate threat to the health or safety of students or employees. There are, however, limited instances when university officials may deem it appropriate to send a Timely Warning to students and employees regarding criminal activity in or around campus that does not involve an immediate threat.



After evacuating, building occupants should report to the appropriate Rally Point to receive further instruction. A map of rally point locations is available at <https://safety.temple.edu/emergency-preparedness/get-educated/procedures/evacuation>.

More information regarding Temple University's emergency response and evacuation procedures, and directions on how to register for TUalert, can be found online: [safety.temple.edu/emergency-preparedness](https://safety.temple.edu/emergency-preparedness).

## DISSEMINATION OF EMERGENCY INFORMATION

To communicate information to the larger community, Temple University's home page ([www.temple.edu](http://www.temple.edu)) may be updated to display important information about significant emergencies or dangerous situations involving an immediate threat to the health or safety of the campus community. The **Temple Information Line (215) 204-1975** may also be activated during an emergency for those needing to call in for recorded updates on the situation. Once there is no longer a threat to the campus community, a message will be sent to resume operations as usual. Both the home page and the information line will be updated accordingly.

## GENERAL EVACUATION PROCEDURE

An evacuation is implemented under conditions when it is no longer safe for students, faculty, and staff to remain in a building or a specific area in a building. This requires occupants to move out and away from a building to a designated rally point or out and away from a specific area within a building. It is most commonly used when there is a suspected fire or related emergency condition in a building.

In the event that you must evacuate, you should:

1. **Leave immediately when the fire alarm sounds.** Close all doors behind you, proceed to the fire exit, and leave the building. If you are in Morgan North or South, The Edge or The Nest, evacuation occurs on the floor of the alarm and on the floors above and below the alarm. The remaining floors should await notification and instructions from the Philadelphia Fire Department Incident Commander, Temple University Fire Marshal or other university personnel regarding evacuation.
2. **Do not use elevators.** Use the stairs. Elevators will stop if power fails, causing occupants to become trapped. Elevator shafts are like chimneys. Smoke could enter the elevator and shaft thereby asphyxiating the occupants trying to evacuate the building.
3. **If the door is hot or smoke is seeping in, do not open it.** Feel the door that leads from your room to the corridor for heat before opening it. If you become trapped in your room and cannot reach the fire exit, keep the door closed and seal off any cracks. Call the Fire Department (9-1-1) or Temple Police, (215) 204-1234, and give your specific location, including the floor and room number.
4. **Stay low** if caught in smoke or heat. **Take short breaths** (through your nose) until you reach an *Area of Refuge* (defined on p. 11).
5. **If the door feels cool, open cautiously.** Be prepared to slam it shut if the corridor is full of smoke or if you feel heat pressure against the door. If the corridor is clear, proceed with the escape plan.



6. **Keep moving** for at least 200 feet and proceed to the designated rally point after leaving the building. Do not reenter until given permission by Temple Police or the Fire Department.

7. **People with Functional and Access Needs:** If your floor has to be evacuated, you should plan to relocate to an *Area of Refuge* or exit stair landing. Once situated, call Temple Police, (215) 204-1234, or the Fire Department (9-1-1). Identify your location and floor. Be sure to indicate if you require special equipment to descend the stairs. The Fire Department should arrive in minutes to assist. Plan in advance to have a responsible person assist you in the event of fire.

If you become trapped and cannot reach the fire exit, keep the door closed and seal off any cracks. **Contact appropriate authorities and give the location of your building, the floor you are on and a contact number:**

- if appropriate, call the Temple Police at (215) 204-1234 or the local police and fire departments by calling 9-1-1;
- in Rome, call the fire department at 1-1-5;
- in Japan, call the fire department at 1-1-9

**Keep all fire exit and corridor doors closed at all times.** These doors are fire rated to keep smoke and heat from entering stairways and adjoining corridors. If at any time you observe these doors propped or tied open, please close them and report the location to the University Fire Marshals, John Higgins: (215) 204-8687 or John Maule: (215) 204-7938 or call Temple Police (215) 204-1234.

**Area of Refuge:** If your floor has to be evacuated, relocate to a protected area, such as oversized landings in fire-safe stairwells or stand-alone, barriered compartments on the floor. Next, call Temple Police, (215) 204-1234, or the Fire Department (9-1-1) and provide your location. Wait in the protected space until fire department personnel can remove you.

**Personal Preparedness:** Plan in advance to have a responsible person assist you in the event of fire. Use a “buddy” system to help you get to a protected area. Anticipate situations where the “buddy” may not be available in an emergency.

**Fire towers** are enclosed stairways that have fire-rated doors and walls that provide a refuge from smoke and heat in a fire emergency. Doors leading into fire towers are inspected periodically to ensure that they open and close properly and should never be tied or propped open. Fire towers cannot be used for storage or as smoking areas. Fire towers are to be clean, well-lit, and free of obstructions at all times. Fire towers are an *Area of Refuge*.

For more information regarding emergency-response procedures, as well as a Main Campus rally point map, visit <https://safety.temple.edu/emergency-preparedness/get-educated/be-tuready/make-plan>.

## SHELTER-IN-PLACE PROCEDURE

Shelter-in-place means to seek immediate shelter and remain there during an emergency rather than evacuate the area. Shelter-in-place will only be used when an evacuation is not safe, such as during a hazardous materials release or severe weather event. Notification to shelter-in-place may be made using all means of communication available. In the event that the TU siren is activated, a TU alert will be sent and the Temple home page will be updated.

In the event that the shelter-in-place protocol is initiated, it is recommended that you:

1. **Stay inside** your building, or immediately go into the nearest building.
2. **Move to interior rooms with no windows** or with windows that can be closed. Rooms that have little or no outside ventilation are preferred.
3. Close any open windows and doors.
4. **Await further instruction.** Be prepared to quickly follow directions from responders or from TU alert.
5. **Do not evacuate** the building until an “All Clear” is given by emergency personnel or by TU alert.

## LOCKDOWN

**A Lockdown** is a procedure used when there is an *immediate threat to the building occupants* and there is a need to stop access to all or a portion of the buildings on campus. In the event of a Lockdown, secure yourself in a room and do not leave until the situation has been resolved. This allows emergency responders to secure the students and staff in place, address the immediate threat, render first aid if needed, and remove any innocent bystanders from immediate danger to an area of safe refuge. If the event is an ACTIVE SHOOTER scenario, your best chance of survival may be to get out of the building as quickly as possible, so be aware of the situation.

### IF YOU ARE INSIDE A BUILDING ON CAMPUS AND AN INCIDENT IS OCCURRING ELSEWHERE:

1. Lock exterior doors *only* if the threat is OUTSIDE the building and it is safe to reach the doors.
2. Call Temple Police, (215) 204-1234, or 9-1-1 as soon as you are able and only if you have information to provide.
3. Notify other building occupants of “Campus Lockdown” status if possible.
4. Close, lock and barricade interior doors, if possible.
5. HIDE in your room or office.
6. REMAIN QUIET.
7. WAIT until emergency personnel give you an “All Clear.”

### IF YOU ARE INSIDE A BUILDING ON CAMPUS WHERE AN INCIDENT IS OCCURRING:

1. Lock exterior doors only if the threat is OUTSIDE the building and it is safe to reach the doors.
2. Call Temple Police, (215) 204-1234, or 9-1-1 as soon as you are able. Provide as much information as possible to the police.
3. RUN: If you can get out, LEAVE IMMEDIATELY and seek safe refuge elsewhere.
4. HIDE: If you cannot get out, SECURE YOURSELF. Hide behind locked doors, away from windows, and to be silent and still.
5. Close, lock and barricade interior doors, if possible.
6. REMAIN QUIET.
7. FIGHT: As a Last Resort, and only if your life is in danger, be prepared to defend yourself.
8. WAIT until you are given the “All Clear.”

### IF YOU ARE OUTSIDE A BUILDING WHERE AN INCIDENT IS OCCURRING:

1. Do not enter the building.
2. Go far away from the building(s) under lockdown.
3. Find a safe location and stay there.

4. DO NOT LEAVE YOUR SAFE AREA until the Police release you from your area.
5. Await emergency notification in the form of a TUALert. Check the University’s website and social media sites for updates and further information as it becomes available.
6. Do not call the location on Lockdown as you may endanger lives.
7. Call Temple Police, (215) 204-1234, or 9-1-1 if you have relevant information.

### TESTING

Temple University will conduct annual testing of its emergency response and evacuation procedures. During the tests, students and employees learn the locations of the emergency exits in the buildings, the direction they should travel when exiting each facility and their designated rally points.

The tests may be announced or unannounced. In conjunction with at least one test per calendar year, the university will publicize its emergency response and evacuation procedures. The Office of the Fire Marshal and Temple Police are responsible for coordinating the tests. For each specific test, the university will document a description of the exercise, the date, the time, and whether the test was announced or unannounced.

**Temple University’s Director of Emergency Management, Sarah Powell (rear viewpoint), discusses the logistics of Alter Hall evacuation drill with the Building Emergency Team members.**





---

Temple Police officers and security personnel have a high level of visibility on the Main, Health Sciences Center, Center City, Podiatry, Fort Washington and Ambler campuses, which helps create a strong connection with the community. **Linked through the state-of-the-art communication center, officers patrol the Main, Health Sciences Center, and Ambler campuses 24 hours a day.**

## Access to Campus Facilities

There are more than 135 buildings at Temple University. Access to open buildings, events, and programs is granted to all students and employees with a Temple identification card. Students and employees are expected to carry their identification card at all times. Upon request of an officer of the university, individuals must show their identification cards. Visitors may be granted access for specific activities by presenting picture identification.

### CAMPUS PATROLS

Temple Police officers and security personnel have a high level of visibility on the Main, Health Sciences Center, Center City, Podiatry, Fort Washington and Ambler campuses, which helps create a strong connection with the community. Linked through the state-of-the-art communication center, officers patrol the Main, Health Sciences Center, and Ambler campuses 24 hours a day.

- **Main Campus**

Patrol boundaries are Susquehanna Avenue on the north to Jefferson Street on the south, with the exception of 13th to Broad Street, where the southern boundary is Girard Avenue. The western border is 18th Street and the patrol area extends east to 9th Street.

**Visibility at night is enhanced by Temple's extensive lighting.**



- **Health Sciences Center Campus**

Patrol boundaries are Venango Street and includes 15th Street to Germantown Avenue on the north to Allegheny Avenue, extending from 15th Street to Park Avenue on the south. The western boundary stretches from Venango Street to Allegheny Avenue. The eastern border follows Germantown Avenue, Rising Sun Avenue; 13th Street; and Park Avenue.

- **Ambler Campus**

The patrol area spans from Meetinghouse Road (on the southwest side) and Loop Drive around the outer campus perimeter and also includes Meetinghouse Road from Butler Pike to Woods Drive.

- **Podiatry, Center City and Fort Washington campuses**

Security personnel monitor the interiors of the respective locations but do not engage in patrol outside the buildings.

- **Harrisburg Campus**

Security personnel (through Securitas, a contracted security company) monitor the interior of 234 Strawberry Street, Harrisburg, PA.

## Campus Security Features

The Department of Campus Safety Services works in conjunction with the Office of Facilities Management to ensure the security of university facilities. Generally, police personnel submit written reports outlining any lighting or safety hazards that they observe. These reports are submitted to the Office of Facilities Management for resolution. Some safety features include:

- **Maintaining lighting on campus to deter crime.** Temple University's campuses have over 1,000 lights mounted on building rooftops. The 1,000-watt metal halide bulbs create a bright white illumination that mimics daylight at ground level.
- **Ensuring shrubbery is appropriately located and maintained** so that all areas are illuminated properly and safety hazards are corrected.
- **Providing shuttle services** for convenient transport on and around the Main campus. TU R Door provides direct service to and from your home within a set geographical area on Main Campus. The boundaries run between 5th Street to 20th Street, and Girard Avenue to Cumberland Street. To use TU R Door, download the TapRide app, select Temple University and use your AccessNet login to request a ride from your smartphone. For more information regarding TU R Door, visit <https://campusoperations.temple.edu/parking-transportation/shuttle-services/tu-r-door>.
- **Maintaining Code Blue Emergency Phones.** There are approximately 90 outdoor emergency phones strategically located on campus walkways, near on-campus student housing facilities and university buildings, and at or near parking areas on the Main, Health Sciences Center, and Ambler campuses.



These communication devices are highly visible and provide a fully self-contained emergency communication device for anyone in urgent need of assistance.

- **Walking escorts** are available to accompany individuals as they travel within a designated area around the Main and Health Sciences Center campuses. The escort service operates daily from 4:00 p.m. to 6:00 a.m. and can be requested by calling 8-WALK (8-9255) from a campus phone or (215) 777-9255 from a cell phone.
- **Maintaining video imaging systems (security cameras).** Temple University has more than 600 cameras within Campus Safety Services' video imaging system installed on various campuses with images streaming to a central server authorized by Campus Safety Services. Campus cameras include both internal and external uses, with low-level and rooftop perspectives. Temple policy provides guidelines for the approval, installation, use, and standard maintenance of cameras or video imaging systems which are intended to aid and enhance the security of the university community. Temple University permits the use of Video Imaging Systems and access to the resulting images captured only when approved by the Department of Campus Safety Services or the pertinent senior university officer.

## PARKING

Temple University currently maintains four garages and 11 surface parking lots that are well-lit and provide more than 5,600 spaces on three campuses. Most areas are staffed by parking attendants and are periodically patrolled by Temple Police or security personnel. To increase personal safety, everyone is encouraged to use on campus parking garages and lots. For more information contact the Office of Parking Services at <http://campusoperations.temple.edu/parking-transportation/parking-services>.

## BIKE REGISTRATION

Students, faculty and staff are strongly encouraged to register their bicycles with Temple Police at the beginning of each semester. Registration is free and serves as a deterrent to theft. After completing the on-line registration process available at [safety.temple.edu](http://safety.temple.edu) your information will be registered in a database. Bring your bike and TUID to a designated Campus Safety Services location. You will receive a TUPD sticker, a registration identification sticker, a flyer about securing your bike properly and a free U-lock (while supplies last).

**Orientation provides the framework for new students to embark upon their transition to Temple Owls!**



## Safety Awareness Programs

The team at Campus Safety Services recognizes the importance of establishing positive relationships and consistent communication with Temple’s community. Campus Safety Services’ approach to maintain safety awareness is to collaborate with campus partners and ensure that awareness is aligned with everyday action.

Orientation presentations provided by Campus Safety Services provide a framework to inform students and employees about security procedures; encourage individuals to be attentive and responsible for their personal safety and outline appropriate resources. Although orientations sessions are scheduled continuously throughout the year, many student sessions occur in July and August.

### NEW STUDENT ORIENTATION

Each semester Campus Safety Services conducts informational sessions to familiarize new students and their families with the department, available services, reporting procedures, and university policies. The presentation also includes risk reduction strategies and role-playing exercises focused towards managing the transition to the college experience and urban living.

New Student Orientation sessions also includes information and education about preventing and addressing sexual misconduct, including sexual assault, domestic and dating violence, sexual exploitation, and stalking, as well as the university’s misconduct policy. These sessions include identification of resources for survivors and strategies for bystander intervention to prevent incidents.

| 44 SESSIONS         |       |     |      |      |        |
|---------------------|-------|-----|------|------|--------|
| >7,000 PARTICIPANTS |       |     |      |      |        |
| January             | March | May | June | July | August |
| 1                   | 1     | 5   | 7    | 11   | 19     |

### NEW HIRE ORIENTATION

In conjunction with the Human Resources department, Campus Safety Services offers presentations and conducts orientations on a continual basis for faculty and staff. The topics include an overview of the department, services, programs, safe commuting tips, street-smart scenarios, and reporting procedures. All newly hired employees are informed about the Clery Act, including an introduction to CSA duties, as well as the university’s resources to respond to sexual assault, domestic and dating violence, sexual exploitation, and stalking. The Human Resources department continually explores new strategies for disseminating Clery and

other relevant employment information to faculty and staff, including but not limited to self-paced on-line training modules.

| 21 SESSIONS         |          |           |         |          |          |
|---------------------|----------|-----------|---------|----------|----------|
| >1,030 PARTICIPANTS |          |           |         |          |          |
| January             | February | March     | April   | May      | June     |
| 2                   | 2        | 1         | 2       | 1        | 2        |
| July                | August   | September | October | November | December |
| 2                   | 4        | 2         | 1       | 1        | 1        |

### OUTREACH SERVICES

Throughout the academic year Campus Safety Services collaborates with other departments to coordinate outreach initiatives, such as:

- **Welcome Wagons** This initiative is designed to acquaint students with the expectations of living in the neighborhoods adjacent to Main Campus. Students, faculty and staff distribute household necessities to residents of these neighborhoods and discuss tips for positive community living.

| 3 SESSIONS | ~350 PARTICIPANTS |
|------------|-------------------|
|------------|-------------------|

- **Listening Circles** Campus Safety Services is dedicated to serving the Temple community and welcomes the opportunity to meet with students, administrators, faculty, and staff to discuss safety concerns and collaboratively identify ways to enhance services.

| 6 SESSIONS        |       |        |           |          |
|-------------------|-------|--------|-----------|----------|
| ~270 PARTICIPANTS |       |        |           |          |
| March             | April | August | September | November |
| 1                 | 1     | 2      | 1         | 1        |

- **Resource Fairs** Representatives from Campus Safety Services join various organizations and university departments to disseminate our promotional safety materials and available resources for general awareness and respond to specific inquiries or concerns.

| 40 SESSIONS         |          |           |         |          |          |
|---------------------|----------|-----------|---------|----------|----------|
| >3,700 PARTICIPANTS |          |           |         |          |          |
| January             | February | March     | April   | May      | June     |
| 2                   | 1        | 2         | 5       | 6        | 2        |
| July                | August   | September | October | November | December |
| 11                  | 4        | 2         | 3       | 2        | 0        |

Police Officers Leroy Wimberly (left) and Gloria West (right) take time to informally connect with attendees during a Coffee with the Cops event at the Dental School on the Health Sciences Center campus.



- **Coffee with the Cops** These events provide informal interaction between Campus Safety Services personnel and Temple students and employees at various campus locations. While receiving information about maintaining a safe environment, guests can share a cup of coffee or assorted pastries with the Campus Safety Services' team.

| 10 SESSIONS         |           |         |
|---------------------|-----------|---------|
| ~1,250 PARTICIPANTS |           |         |
| January             | February  | March   |
| 1                   | 1         | 1       |
| August              | September | October |
| 1                   | 3         | 3       |

## Crime Prevention and Risk Reduction Programs

Through the use of flyers, brochures, pamphlets, and other initiatives, Campus Safety Services promotes strategies for students and employees to reduce the risks of crime and increase their personal safety. These activities include:

- **Self Defense** Rape Aggression Defense is a nationally recognized comprehensive program focused on awareness, prevention, risk reduction, and risk avoidance. Upon request, one of Campus Safety Services' certified instructors will provide basic information and a hands-on demonstration.

| 6 WORKSHOPS       |          |       |           |          |
|-------------------|----------|-------|-----------|----------|
| ~220 PARTICIPANTS |          |       |           |          |
| January           | February | March | September | December |
| 1                 | 2        | 1     | 1         | 1        |

In addition, students can enroll in an accredited two-credit course through the Department of Kinesiology.

| 12 CLASSES        |
|-------------------|
| ~280 PARTICIPANTS |

- **Class Presentations** The Campus Safety Services' team provides presentations to the Temple community pertaining to various safety-related topics.
- **Unattended Property campaign** Representatives from Campus Safety Services tour campus buildings in search of unattended property and remind the owners to appropriately safeguard their belongings.



Donna Gray welcomes a new student and shares safety information during an orientation event.

- **Office Safety door hangers** Campus Safety Services aims to promote workplace safety and provide employees with valuable tips and reminders to reduce their risks through the periodic distribution of these handouts.
- **Bike Safety hangers** Given that bike theft is a national issue, officers periodically use these preventive tools to inform our community about the proper methods to secure their bikes and reduce their risks.

For more information or to arrange a program, please contact the Risk Reduction Manager for Campus Safety Services, Donna Gray at (215) 204-5870 or [donna.gray@temple.edu](mailto:donna.gray@temple.edu).



---

Temple University's Housing and Residential Life department offers housing in communal, suite, and apartment-style accommodations. **Within Residential Life, there are approximately 170 professional and student staff.** These individuals have training regarding emergency response, and documenting and reporting crime.

## Safety Policies for On-Campus Student Housing Facilities

Temple University's Housing and Residential Life department offers housing in communal, suite, and apartment-style accommodations. Within Residential Life, there are approximately 170 professional and student staff. These individuals have training regarding emergency response, and documenting and reporting crime. All residence halls are coeducational, with men and women living in the same building, with most individual apartments, suites, and rooms being single sex. Each residence hall has a security officer present in the lobby area 24 hours a day to monitor access to the building. All residents must "tap" their Temple University identification card so that the security officer can verify their identity. For those that do not have their Temple University identification card, they must enter their information into the authentication station before they can gain entry to the building.

### OFF-CAMPUS HOUSING

Students who are in search of off-campus housing secure their own housing accommodations. Temple's Off-Campus Housing department compiles a list of apartment complexes within the area that provide a closely related housing experience when compared to Temple University's Residence Halls.

### ASSIGNMENTS

Temple's residence halls typically house approximately **6,000 students** in **10 buildings** yearly, including about **100 graduate students**. Housing is assigned on a first-come, first-served basis and due to limited availability, is focused primarily on incoming freshmen and returning sophomores who complete all steps of the housing selection process. However, in some cases, returning juniors or seniors do receive housing due to their individual circumstance.

**NOTE:** Due to COVID-19, during the fall 2020 semester, occupancy was adjusted to address health and safety protocols. Such adjustments included de-densification and ensuring appropriate space for individuals undergoing isolation or quarantine. As of October, 2020, more than 1,200 students currently reside in on-campus student housing.

### INITIAL ASSIGNMENTS

Students who pay their housing deposit are able to sign on to the Student Web Self Assign (SWSA) system, where they are able to see an up-to-date inventory of spaces that are open and assign themselves in the system. The SWSA system opens in February, and remains open until all spaces are filled. The earlier students submit their deposits, the earlier they can assign themselves housing and are more likely to receive their preferred accommodations. Students are only able to see spaces designated for their application type, i.e. incoming freshman students can only see spaces that are available to first-year students.

The pathway to Morgan Hall represents the beginning of their on-campus housing experience for many Temple Owls!



### LIVING LEARNING COMMUNITIES, ATHLETICS, AND OTHER SPECIAL ASSIGNMENTS

Students who participate in Living Learning communities, certain athletic programs, or students who have other special circumstances are manually assigned to previously reserved spaces in Temple University's Housing and Residential Life inventory. Any spaces that are not allocated by mid-summer will be released for routine room selection.

### ROOM CHANGE PROCEDURES

Normally, Temple University's room change process occurs at the beginning of each semester and is available throughout the entire academic year. There are three main room change periods during the academic year: early fall, mid-fall, and early spring. The week prior to each room change period, students will be encouraged to submit a Room Change Request via Temple's MyHousing system available via [TUportal](#). Students are always encouraged to speak with their building administrators, such as the Front Desk Manager, Resident Assistant, and/or Resident Director, to discuss room change procedures, policies and issues involved in their room. Building staff will work with students to ensure they properly check-in and check-out of their spaces. Necessary room changes due to student conflicts and/or building maintenance issues may occur at any time throughout the year. For specific information about the Room Change Process, please visit <https://housing.temple.edu/select-your-housing/room-change>.

**NOTE:** During the fall 2020 semester, voluntary room changes were suspended in order to limit the spread of COVID-19. Room changes made for emergencies or other urgent reasons were approved by Residential Life staff.

### ACCESS

All Temple University-managed residence hall facilities have security officers stationed at or near their entrances in order to regulate access. Only students assigned to a building may enter a residence hall without being signed in as a “guest.” To gain access, residents swipe or tap their identification cards. Each security desk is equipped with an ID reader and a monitor that displays a picture of the student for identification verification before gaining entry to the building. All residents are required to have their ID cards available for presentation when they enter a Temple University building.

### GUEST POLICY

Guests are individuals who come to a residence hall to visit a specific resident. The resident host must meet their guest with their Owl Card and guest card at the security desk to sign them into their residence hall. The guests must present a VALID picture identification (i.e., driver’s license, military ID, college or Owl Card) to complete the sign-in process. The security officer (SO) registers the guests and retains the guests’ identification and the resident’s guest card until the host signs out the guest. Guests will not be signed in without proper ID.

Visitors who arrive unaccompanied by a resident must arrange to meet the resident at the entrance before they will be allowed to enter the facility. The resident must come to the security desk, verify the visitor as a guest and complete the sign-in process. Each time the guest(s) enters or leaves the building, the guest must be signed in and signed out.

**Security Officer Leonard Lucas explains the guest sign-in process to a new resident at the 1940 residence hall**



The resident has a responsibility to escort guests at all times while they are in the residence hall. Also, the resident should ensure that each guest adheres to all University Housing & Residential Life’s community living standards, rules, and regulations as outlined at <https://housing.temple.edu/resources-and-services> in the Rights, Responsibilities, and Resource Guide, as well as all local, state, and federal laws.

A maximum of three guests are permitted from 8:00 a.m. to 2:00 a.m. There are additional restrictions for overnight guests and individuals under the age of 18 years. Residents should consult their housing contracts and applicable policies for additional information. For example, student residing in:

- Johnson and Hardwick Residence Halls may have one overnight guest, provided the guest is over 18 years of age, for a time period no longer than two consecutive nights.
- Morgan Complex, White, 1940, Temple Towers, 1300, The Edge, and Beech International Residence Halls may have two overnight guests, provided the guest is over 18 years of age, for a time period no longer than two consecutive nights.

**NOTE:** Due to COVID-19, the guest policy has been modified so that no outside guests are permitted into the residence halls, and students are not permitted to travel from one residence hall to another to visit other students. This modification was implemented March 21, 2020 and will remain in effect until further notice.

### SECURITY PRECAUTIONS

Residents are issued a key/keycard that opens their room only. If a key/keycard is lost, a lock change is ordered and a new key/keycard is issued. All residence hall windows have locks and screens. In addition, for enhanced safety, security access screens have been attached to the windows on the lower floors of on-campus student housing facilities.

### UNIVERSITY BREAK PERIODS

**Low Occupancy Periods:** The contract dates for undergraduate housing are available at <https://housing.temple.edu/important-dates>. Typically, students are required to vacate during Thanksgiving, winter, and spring breaks. However, all residence halls remain open during all break periods. Students who wish to stay in the halls during University breaks must request a housing extension to do so. There is an additional charge for students to stay during Winter Break (no charge for Fall or Spring break). Graduate contracts do not contain the expectation to vacate during breaks. During these low occupancy periods, residents are encouraged to take all of their valuables with them. The University’s residential guest policy remains in effect during all break periods.



## Safety Initiatives in On-Campus Student Housing Facilities

### FALL AND SPRING MOVE-IN

University Housing and Residential Life staff reinforce safety and security messages sent by Campus Safety Services, the Wellness Resource Center, and other campus partners, beginning at the move-in periods and continuing throughout the academic year.

### COMMUNITY MEETINGS

Three times each semester, Residential Life staff hold floor and area community meetings with residents. During these meetings, safety and security policies are reinforced and conversations are held with residents.

### RESIDENTIAL CURRICULUM

As part of University Housing and Residential Life's Residential Curriculum, students are engaged in ongoing and intentional active reflection around three primary learning goals: self-exploration; relationship development; and social and cultural awareness. Through the curriculum, various learning strategies are used to engage students on safety and security and other various topics. These learning strategies include intentional 1-1 interactions between staff and residents, self-guided and planned community engagement opportunities, and connections to campus and community partners.



**The Class of 2024 illustrates that move-in is a "family affair."**

### THAT'S NOT LOVE

That's Not Love is an activity conducted with residents once each semester that focuses on how to address toxic relationships.

### ALCOHOL AWARENESS

At least once each semester, residents are also engaged in an alcohol awareness initiative in the residence halls.

## Missing Student Notification

Temple University encourages all students to identify an emergency contact through TUPortal ([tuportal.temple.edu](http://tuportal.temple.edu)), under the *Student Tools* tab. Students who reside in on-campus housing at either the Main Campus or at the School of Podiatry have the additional option of identifying a confidential missing person contact in the event that the student is determined to be missing. The missing persons contact is distinct from the "emergency contact": the missing persons contact is registered confidentially, and only authorized campus officials and law enforcement officers in furtherance of a missing person investigation have access to this missing person contact information.

If a member of the Temple community has reason to believe that a student residing in on-campus housing is missing, the individual should immediately report it to **Temple Police at (215) 204-1234 or at 1-1234 from a campus phone**, or from any of the code blue light emergency telephones on or around campus. Anyone receiving a missing student report should immediately forward the information to Temple Police.

If Temple Police determine that a student is missing, Temple Police will notify the Philadelphia Police Department or other local law enforcement, regardless of whether the student has identified a confidential missing person contact.

For students residing in on-campus housing, Temple Police will also notify the Director of Residential Life or their designee. The Director of Residential Life or their designee will notify the student's designated contact within 24 hours after the determination that the student is missing. If the missing student is less than 18 years of age and is not emancipated, the Director of Residential Life will immediately notify the student's parent or guardian in addition to the student's designated contact.

---

**The university policy on Preventing and Addressing Sexual Misconduct (policy number 04.82.02) is intended to promote an environment at Temple University which is free of sexual assault, domestic violence, dating violence, stalking, sexual exploitation, and other forms of sexual harassment, as well as one that is consistent with other constitutional protections and personal freedoms.**



**The Howard Gittis Student Center contains many valuable resources including the Wellness Resource Center, Office of Student Conduct and Community Standards, and Dean of Students Office.**

For a description of the applicable legal sanctions for the unlawful possession or distribution of illicit drugs and alcohol and related health risks, students should review the university's Student Drug and Alcohol policy (<https://secretary.temple.edu/sites/secretary/files/policies/03.70.01.pdf>). Employees should review the university's Employee Drug and Alcohol Policy (<https://secretary.temple.edu/sites/secretary/files/policies/04.63.01.pdf>) as well as section 11.9 in the university's employee manual ([http://www.temple.edu/hr/departments/employeerelations/documents/Employee\\_Manual.pdf](http://www.temple.edu/hr/departments/employeerelations/documents/Employee_Manual.pdf)).

## Drug and Alcohol Use

Temple University strictly prohibits the unlawful possession, use, consumption, distribution, or manufacture of drugs and alcohol on university property, or as part of any university activity. A violation of this policy will subject the student to the full range of sanctions, including, but not limited to, expulsion, as outlined in the Student Conduct Code. Employees who violate the university's policies on alcohol and drug use are subject to discipline, up to and including termination.

The Student Conduct Code and other university policies contain additional requirements and prohibitions regarding the use of drugs and alcohol (e.g., drug and alcohol policies affecting Athletics, Greek Life, and Residential Life). The Student Conduct Code states possible sanctions for drug-related and alcohol-related offenses which include expulsion, suspension, probation, fine, withdrawal of student privileges, letter of reprimand, and loss of university housing or privileges. Additionally, anyone who violates the Drug and Alcohol Use policy may be subject to criminal prosecution under applicable local, state, and federal laws.

It is unlawful to sell, furnish, or provide alcohol to a person under the age of 21. The use or possession of alcohol by anyone under the age of 21 is illegal. The Dean of Students may notify a student's parents or guardians of any alcohol or drug violations occurring when the student is under the age of 21. Campus Safety Services will notify parents or guardians of students under the age of 21 upon issuing a citation for an alcohol violation.

The illegal use, possession, sale, or distribution of any controlled substance is a violation of both state and federal laws. Such laws are strictly enforced by Temple Police. Violators are subject to university disciplinary action, criminal prosecution, fine, and imprisonment.

## MEDICAL AMNESTY

The university strongly encourages students to call Campus Safety Services for medical assistance for themselves or for other individuals who are dangerously under the influence of drugs or alcohol. No student seeking medical treatment for the effects of drug or alcohol use will be subject to university discipline for violations pertaining to drug or alcohol use as outlined in the Student Code. Medical amnesty does not apply to disciplinary action relating to any other criminal activity including but not limited to assault, property damage, or the presence of or distribution of other substances. This medical amnesty will be granted to both the intoxicated student and to the student seeking medical assistance for the intoxicated student; however, the intoxicated student will be required to participate in the university's Drug and Alcohol Education Program in order to receive medical amnesty.

## Drug and Alcohol Education

The Wellness Resource Center (WRC) is responsible for alcohol and drug use prevention education. The WRC is a team of experienced and dedicated professionals and Certified Peer Educators who work to promote comprehensive wellness and create connectedness through a variety of programming and services. The Wellness Resource Center takes a harm reduction approach to educating students about substance use and does so in line with the principles of health education using a public health approach. The WRC emphasizes personal choice and independent decision making, while providing accurate and up-to-date information about substances that students may encounter while they move through their lives both here in Philadelphia and elsewhere.

- **Wellness Resource Center**  
**Location: Student Center 201**  
**Telephone: (215) 204-8436**



### CAMPUS COMMUNITY TRAININGS

The Wellness Resource Center wants to equip all members of the campus community with accurate information and does so through a variety of programming and initiatives.

- **Peer-Facilitated Programs** Student organizations, instructors, athletic teams, and other student groups can request a program facilitated by the WRC's Health Education Awareness Resource Team (HEART) Peer Educators.
- **Alcohol 101** Drinking alcohol is common among college students, and this program is designed to help students explore why they choose to drink or decide not to. Through a series of games and activities, students will learn about ways to keep themselves and their fellow Owls safe when alcohol is in the mix.

### ADDITIONAL HEALTH PROMOTION EFFORTS

- **BASICS** The WRC facilitates 60-minute conversations with students to discuss their attitudes and behaviors around alcohol use. BASICS supports students in making decisions that align with their values and support their overall well-being in regards to their alcohol use.
- **CHOICES About Alcohol** The WRC facilitates CHOICES, an alcohol education program for students who have been sanctioned after a first-time violation of the Student Conduct Code's alcohol policy or for use of the Medical Amnesty Policy. CHOICES is a 90-minute interactive group session designed to help students understand their behaviors relating to alcohol use.
- **Social Norms Messaging** The WRC emphasizes social norms via messaging through printed materials, posters, digital screens, and social media. This includes educating students about Temple's Medical Amnesty Policy.
- **Online educational programs** Temple students complete online prevention modules to think about the role alcohol plays in their life and learn accurate and up-to-date information.

### EFFORTS TO SUPPORT STUDENTS IN RECOVERY

- **Substance Use Education and Harm Reduction Work Group** The WRC works with departments and stakeholders from across campus to contribute to creating a campus community where students in recovery, and all students who do not use substances, feel validated and supported. This includes:
  - Elevating AOD prevention and harm education efforts.
  - Promoting substance free events and activities.
  - Elevating existing resources that can support students in recovery.
  - Continuing to reduce stigma and help build allies.



Temple University seeks to support all students and members of the campus community by creating opportunities for connection and affirming life experiences.

## Drug and Alcohol Counseling and Treatment Programs

Students in need of confidential drug or alcohol counseling may access:

- **Tuttleman Counseling Services**  
**Location: 1700 N. Broad Street—2nd Floor**  
**Telephone: (215) 204-7276**

Any Temple University student needing substance abuse counseling can access the Campus Alcohol and Substance Awareness (CASA) program, as well as psychological and psychiatric counseling services, through Tuttleman Counseling Services. The CASA program is staffed by trained professionals and offers individual and group counseling. Online screening, as well as, educational literature are also available. Counselors will also refer students to mental health resources on campus and in the city that are specific to their needs. There are no fees for any assistance provided by Tuttleman Counseling Services.

Employees are encouraged to use campus-related self-help groups (e.g., Adult Children of Alcoholics, Alcoholics Anonymous, or Narcotics Anonymous), the EAP (Employee Assistance Program), or health insurance plans, as appropriate, when facing alcohol and/or drug-related problems. Employees may contact the Human Resources Benefits Department at (215) 204-1321. Tuttleman Counseling Services is also available to provide employees a one-time consultation for assistance with identifying mental health related community resources. Other support resources include:

- **Alcohol Abuse and Crisis Intervention**  
**Telephone: (800) 231-0246**
- **Alcohol and Drug Abuse Hotline**  
**Telephone: (800) 333-4444**



**Police Officer Robert Guerra gives instructions to the Temple community.**

## Weapons Policy

Firearms and other dangerous weapons are strictly prohibited in or on university premises. This prohibition applies to all persons, even those who possess a license to carry such weapons, except for authorized Campus Safety Services and other law enforcement personnel performing official functions. Reported violations will be investigated and violators will be arrested, cited, and/or disciplined as appropriate. Temple University Campus Police Officers are sworn law enforcement officers. They are annually certified by the Municipal Police Officers' Education and Training commission and carry firearms, batons, and other weapons.

## Temple's Policy on Sexual Misconduct

The following information is drawn from Temple University's policy on Preventing and Addressing Sexual Misconduct, which can be found at <https://secretary.temple.edu/sites/secretary/files/policies/04.82.02.pdf>.

Temple University prohibits sexual assault, domestic violence, dating violence, stalking, sexual exploitation, and other forms of sexual harassment, which are described in detail in the Preventing and Addressing Sexual Misconduct Policy. Prohibited conduct under this policy are collectively referred to as "sexual misconduct."

### DEFINITIONS

#### CONSENT:

Consent in relationship to sexual activity is defined in Pennsylvania and at Temple in accordance with its plain and common meaning. Consent means knowing, voluntary, and clear permission by words or actions to engage in sexual activity. Consent must be ongoing through sexual activity and can be revoked at any time. Mere assent

(an affirmative statement or action) shall not constitute consent if it is given by a person who is unable to make a reasonable judgment concerning the nature or harmfulness of the activity because of intoxication, unconsciousness, youth, mental deficiency, or if the assent is the product of threat or coercion. Consent to prior sexual activities does not constitute consent to future acts.

#### SEXUAL ASSAULT:

Temple's policies prohibit any of the following, or threat or attempt to engage in any of the following:

- Any intentional and unconsented touching for the purpose of sexual gratification: (i) an intimate body part of another person, such as a sexual organ, buttocks or breast; (ii) any body part of another person with a sexual organ; or (iii) any part of another person's body with the intent of accomplishing a sexual act; or
- Vaginal or anal penetration of another individual, by body part or object, without the other person's consent; or
- Vaginal, anal, or oral sexual intercourse with another individual without the other person's consent.

In Pennsylvania, the crime of sexual assault is defined as when a person engages in sexual intercourse or deviate sexual intercourse with a complainant without the victim's Effective Consent. Rape is defined in Pennsylvania as penetration, no matter how slight, of the vagina or anus with any body part or object, or oral penetration by a sex organ of another person, without the consent of the victim. Rape also occurs when a person engages in sexual intercourse with a person by forcible compulsion or the threat of forcible compulsion that would prevent resistance by a person of reasonable resolution, or when a person is unconscious or where the person knows that the victim is unaware that the act is occurring. In accordance with federal regulations, the university prohibits sexual assault, which includes conduct defined by federal agencies as rape, sodomy, sexual assault with an object, and fondling.

**DOMESTIC VIOLENCE:**

Violent acts or conduct committed by a current or former spouse or intimate partner of the Complainant, by a person with whom the Complainant shares a child in common, by a person who is cohabitating with or who has cohabitated with the Complainant as a spouse, by a person similarly situated to a spouse of the Complainant, by any other person against an adult or youth victim who is protected from that person's acts under the domestic or family violence laws of the Commonwealth of Pennsylvania, or as "domestic violence" is otherwise defined under the laws of the Commonwealth of Pennsylvania.<sup>1</sup>

Domestic Violence is currently not specifically defined by Pennsylvania state statute, however family abuse is. "Abuse" is defined as the occurrence of one or more of the following acts between family or household members, sexual or intimate partners or persons who share biological parenthood:

- (1) Attempting to cause or intentionally, knowingly or recklessly causing bodily injury, serious bodily injury, rape, involuntary deviate sexual intercourse, sexual assault, statutory sexual assault, aggravated indecent assault, indecent assault or incest with or without a deadly weapon.
- (2) Placing another in reasonable fear of imminent serious bodily injury.
- (3) The infliction of false imprisonment pursuant to 18 Pa. C.S.A. §2903 (relating to false imprisonment).
- (4) Physically or sexually abusing minor children, including such terms as defined in Chapter 63 (relating to child protective services).
- (5) Knowingly engaging in a course of conduct or repeatedly committing acts toward another person, including following the person, without proper authority, under circumstances which place the person in reasonable fear of bodily injury. The definition of this paragraph applies only to proceedings commenced under this title and is inapplicable to any criminal prosecutions commenced under Title 18 (relating to crimes and offenses).

**Temple flags fly high on Broad Street.****DATING VIOLENCE:**

Means violence committed by a person:

- (a) who is or has been in a social relationship of a romantic or intimate nature with the Complainant; and
- (b) where the existence of such a relationship will be determined based on the Complainant's statement and with a consideration of the following factors:
  - (i) The length of the relationship.
  - (ii) The type of relationship.
  - (iii) The frequency of interaction between the persons involved in the relationship.

Dating violence includes, but is not limited to, sexual or physical abuse or the threat of such abuse. Dating violence does not include acts that meet the definition of "domestic violence."

**STALKING:**

A course of conduct directed at a specific individual that would cause a reasonable person to fear for their safety or the safety of others; or suffer severe emotional distress; or as "stalking" is otherwise defined by the law of the Commonwealth of Pennsylvania. One engages in an impermissible course of conduct if one engages in two or more acts that include, but are not limited to, acts in which the stalker directly, indirectly, or through third parties, by any action, method, device, or means, follows, monitors, observes, surveils, threatens, or communicates about a person in a way prohibited as described above, or interferes with a person's property.<sup>2</sup>

**SEXUAL EXPLOITATION:**

Conduct in which a person takes non-consensual sexual advantage of another individual for the benefit of anyone other than the individual being exploited. Examples of sexual exploitation include, but are not limited to the following:

- (1) Taking and/or disseminating pictures, video, or audio recording of another person engaged in sexual activity without the consent of all involved in the activity.
- (2) Exposing one's genitals in non-consensual circumstances, including via online communications.
- (3) Sexual voyeurism, such as watching another engage in sexual activity or undressing without consent.
- (4) Disrobing another person without their consent.
- (5) Knowingly transmitting sexually transmitted infections (STI) or sexually transmitted diseases (STD) without disclosing that one is infected with an STI or STD.

<sup>1</sup> See 23 Pa. C.S.A. § 6102, et seq. and 18 Pa. C.S.A. § 2711.

<sup>2</sup> See 18 Pa. C.S.A. § 2709.1.





As the stained glass in Mitten Hall illustrates, Temple University has a long tradition of educating minds and encouraging hearts.

## TEMPLE'S POLICIES

The university policy on Preventing and Addressing Sexual Misconduct ([policy number 04.82.02](#)) is intended to promote an environment at Temple University which is free of sexual assault, domestic violence, dating violence, stalking, sexual exploitation, and other forms of sexual harassment, as well as one that is consistent with other constitutional protections and personal freedoms. Specifically, the policy provides for:

- (1) comprehensive education and prevention programs that inform the university community that Temple prohibits and does not tolerate sexual misconduct and about the risks and myths that contribute to sexual assault, domestic violence, dating violence, stalking, and sexual exploitation;
- (2) the definition of consent in reference to sexual activity in Pennsylvania;

- (3) definitions of relevant terms, including domestic violence, dating violence, sexual assault, stalking, and sexual exploitation in Pennsylvania;
- (4) procedures sensitive to complainants in responding to reports of alleged sexual assault, domestic violence, dating violence, stalking, and sexual exploitation, including informing complainants about their right to file criminal charges as well as the availability of medical, counseling, and support services, and alternative remedies such as housing and academic accommodation, if reasonably available; and
- (5) university disciplinary sanctions for those who commit sexual assault, domestic violence, dating violence, stalking, and sexual exploitation.

## EDUCATIONAL PROGRAMMING AND TRAINING

In collaboration with the Title IX Coordinator, various university offices (Wellness Resource Center, Institutional Diversity, Equity, Advocacy, and Leadership, Human Resources, etc.) provide educational programming and training opportunities for students, faculty, and staff.

The educational programs include:

- **Orientation:** programs for new students, faculty and staff that are designed to educate the campus community about the university's policies and prevention programs related to sexual assault, domestic violence, dating violence, stalking, sexual exploitation, and other forms of sexual harassment. The orientation programs include relevant state and federal definitions of sexual assault, consent, domestic violence, dating violence, stalking, and sexual exploitation and other forms of harassment, as well as how to avoid potential incidents, and available resources.
- **Social Norms Messaging:** communications are used in vehicles such as posters, resources, and social media to promote healthy behaviors and increase awareness of and access to university resources. Content includes sexual violence prevention, alcohol and other drug, medical amnesty, and campus resources.
- **Education Sessions:** programs are developed for the general student population, student groups, or guest lectures to address content related to student well-being. Sexual assault prevention and alcohol abuse prevention are commonly requested topics. Campus resources are covered in the presentations and students learn how to recognize high-risk behaviors and other problems/issues including alcohol/drug use, sexual health, interpersonal violence and sexual assault, mental health, and body image. Participants learn how to intervene in problematic situations (Give a Hoot) and to make appropriate referrals to on-campus resources. Participants also learn skills to reduce risk, and to overcome barriers through various intervention strategies with the goal of reducing bystander inaction.

- **The Clothesline Project:** a living arts project that bears witness to interpersonal violence. During the event, a clothesline is hung with shirts, with each shirt decorated to represent a particular person's experience of abuse. This event is coupled with educational activities, resources, and information. Campus partners and support services are available for those who have experienced abuse during the program.
- **Walk TU:** Temple's Walk to End Sexual Violence is an annual walk which kicks off Sexual Assault Awareness Month events. The walk welcomes anyone to participate and helps promote awareness that sexual violence is an issue that all members of the Temple community can help address.
- **Sexual Assault Awareness Month Programming:** programming occurs throughout the month of April with the 2019 theme of "Community of Care." Programming included: Beyond Yes & No: A Conversation about Safety and Respect, Walk TU, Denim Day, Clothesline Project, and Take Care, Take Action: Sexual Assault Prevention & Advocacy.
- **Sexual Assault Prevention Week:** Throughout September, Temple Student Government, along with the Office of Equal Opportunity and Compliance, coordinate a series of events on Main Campus. Most recently, the Wellness Resource Center facilitated Campus Sexual Assault: Understanding the Red Zone and Beyond Yes & No: Dynamics of Consent.

Training opportunities are available to student peer groups, student workers, and faculty and staff members.

Peer-facilitated Programs: Nationally certified HEART Peer Educators deliver educational programs to their peers. There are eight options; sessions of particular relevance include:

- **Give a Hoot – Owls Speak Up:** Students learn how to support community wellness through positive action, and also learn about the bystander effect, the difference between emergent

**Wellness Resource Center staff (Liz Zadnik and Janie Egan) discuss programming ideas.**



- and non-emergent situations, and strategies for taking action. Students practice applying these strategies to scenarios that focus on topics such as mental health, body image, alcohol/drug use, sexual health and sexual assault.
  - **Building A Safer Nest: Addressing Sexual Assault & Harassment:** This 60-minute workshop explores the realities of how and why violence happens, and sets forth action items to create a safer campus community. Facilitators offer space to analyze real world examples and discuss ways to effect change in our own lives.
  - **We ♥ Healthy Relationships:** Happiness in personal relationships can help individuals cope with challenges, feel less stressed, and even improve physical health! Participants learn strategies for cultivating healthy and productive relationships. Facilitators offer simple ways to infuse wellness in communication and problem-solving.
  - **Alcohol 101:** Students explore why they choose to (or not to) drink. Through a series of games and activities, students learn about ways to keep themselves and their fellow Owls safe when alcohol is in the mix!
  - **EVERFI Online Prevention Programs:** Online educational modules by EVERFI provide students with important information around sexual violence, consent, alcohol and other drugs, and campus policies and resources. All students who are new to Temple University are assigned mandatory programming. These modules provide a foundation for additional programming and events provided throughout the academic year that address these issues.
  - **Step UP!** A comprehensive bystander intervention training created by the University of Arizona in partnership with the NCAA, Step Up! aims to raise awareness of helping behaviors, increase motivation to help, develop skills and confidence when responding to problems or concerns, and ensure the safety and well-being of self and others. Step UP! is delivered in partnership with the Wellness Resource Center and Athletics.
  - **Partnership with WOAR — Philadelphia Center Against Sexual Violence:** Temple University has a partnership with WOAR that provides students with a third campus confidential reporting location. Students can contact WOAR through their 24-hour hotline, and if necessary, a WOAR representative will meet with the student at a Main campus location. WOAR also offers a training and educational programming hosted on Main campus.
- Tuttleman Counseling Services** provides counseling services to students who have experienced sexual misconduct, including sexual assault, domestic violence, dating violence, stalking, sexual exploitation, and other forms of sexual harassment. Temple University's **Sexual Assault Counseling and Education (SACE)** program staff at the Tuttleman Counseling Services provide crisis intervention counseling and referrals. For more information about this program and other counseling services, contact **Tuttleman Counseling Services** at (215) 204-7276.



**The Wellness Resource Center brings students and staff together to focus on campus-wide events and educational prevention programming.**

Temple's Department of Human Resources provides training to university employees that covers definitions of sexual misconduct, including sexual assault, consent, domestic violence, dating violence, stalking, sexual exploitation, and other forms of sexual harassment pursuant to relevant state and federal definitions, and provides information regarding support resources for employees who experience sexual assault, domestic violence, dating violence, stalking, sexual exploitation, and other forms of sexual harassment. These sessions may include how to request schedule changes, work assignment changes, transportation accommodations and referrals to appropriate law enforcement agencies as well as the Employee Assistance Program and other external resources.

### **REPORTING SEXUAL ASSAULT, DOMESTIC VIOLENCE, DATING VIOLENCE, STALKING, AND SEXUAL EXPLOITATION**

Individuals who have experienced sexual assault, domestic violence, dating violence, stalking, and sexual exploitation, should get to a place of safety immediately and should obtain necessary medical treatment at once. Individuals should report the incident as soon as possible, since time is a critical factor for evidence collection and preservation. As time passes, evidence may dissipate or become lost or unavailable, thereby making investigation, possible prosecution, disciplinary proceedings, or obtaining protection from abuse orders related to the incident more difficult. If an individual chooses not to make a complaint regarding an incident, they are still able to speak with Campus Safety Services or other law enforcement to preserve evidence in the event of a later change of mind. If they choose, individuals may be transported to the Philadelphia Sexual Assault Response Center where they can complete a forensic examination and choose to begin an investigation through the Philadelphia Police Special Victims Unit.

Information about what to do in the event of sexual violence or other forms of sexual misconduct can be found at <https://sexualmisconduct.temple.edu/>.

To report an incident anonymously or with your name, use this form to access Temple's Title IX Anonymous Online Reporting System: <https://sexualmisconduct.temple.edu/>.

Individuals reporting sexual misconduct will receive amnesty from alcohol or drug violations pursuant to the university's Student Conduct Code and policy on Preventing and Addressing Sexual Misconduct.

Individuals should report incidents of sexual assault, domestic violence, dating violence, stalking and sexual exploitation occurring on the Main, Health Sciences Center, Center City, Podiatry, and Ambler campuses to Temple Police by dialing **1-1234 (from a campus phone) or (215) 204-1234 (from a non-campus phone)**. Temple Police will assist victims in reporting the incident to the appropriate local law enforcement, should they so choose. Individuals may report the incident directly to local law enforcement by calling 9-1-1 should they prefer.

Sexual assault, domestic violence, dating violence, stalking, and sexual exploitation occurring at other campuses, including Fort Washington and Harrisburg, at TASB, or off-campus should be reported to local law enforcement at 9-1-1 or the local country's equivalent.

In Japan, police can be reached 1-1-0 or 03-3503-8484 (weekdays 9:00 a.m.-5:00 p.m.).

At Temple University Rome, police can be reached at 1-1-3.

Regardless of the location, individuals may also report an incident of sexual misconduct to Temple's Title IX Coordinator.



Anonymous reports of sexual misconduct can also be made to Temple's Ethics and Compliance Helpline (<https://www.temple.edu/about/ethics-compliance/helpline>).

If desired by the individual who has experienced the sexual misconduct, Temple University personnel will assist the individual in notifying local authorities and receiving the necessary medical treatments and tests. Filing a police report provides the opportunity for the collection of evidence and assures the victim access to confidential counseling through the City of Philadelphia in addition to resources available through the university. Reporting an incident of sexual misconduct does not require prosecution of a crime, nor will it subject the individual who reports an incident to judgment or scrutiny. Temple University does not tolerate retaliation against persons reporting sexual assaults, domestic violence, dating violence, stalking, sexual exploitation, and other forms of sexual harassment.

Whether they pursue a criminal complaint or not, individuals who experience sexual misconduct may also file a complaint through Temple University administration. The university's procedures for filing formal and informal complaints are set out below and are intended to afford a prompt response to reports of sexual misconduct, to maintain confidentiality and fairness consistent with applicable legal requirements, and to impose appropriate sanctions for violations of this policy.

#### **CONFIDENTIALITY**

The university will protect to the fullest extent of the law the identity of persons who report having experienced sexual misconduct. If the Complainant would like to remain anonymous and does not consent to the disclosure of their name or other identifiable information to the Respondent, the university will provide supportive means to the Complainant, but will be limited in its ability to take disciplinary action.

**The owl represents wisdom and knowledge and is known for being perceptive, resourceful and courageous.**





**Inside 1700 N. Broad Street, Tuttleman Counseling Services occupies the 2nd floor and Student Health Services is located on the 3rd floor.**

The university will make every reasonable effort to abide by the Complainant's wishes regarding anonymity; however, there may be circumstances that necessitate an investigation into the reported conduct. This decision will be made by the university's Title IX Coordinator, the Executive Director of Campus Safety Services, the Dean of Students, and/or the Associate Vice President of Human Resources, or their designees, in conjunction with the Office of University Counsel as well as any other necessary university offices. If the university proceeds with an investigation, the Complainant will be provided with all the notices and opportunities as set forth under Formal Complaints on this page and under Student Conduct Proceedings in Cases of Sexual Misconduct on pages 32-33.

Students who have experienced sexual misconduct can report confidentially to:

- Tuttleman Counseling Services  
Telephone: (215) 204-7276  
<https://counseling.temple.edu/>
- Student Health Services  
Telephone: (215) 204-7500  
<http://www.temple.edu/studenthealth/>
- Philadelphia Center Against Sexual Violence (WOAR)  
Telephone: (215) 985-3333  
<http://www.woar.org>

Employees who have experienced sexual misconduct can report confidentially to:

- Employee Health Services  
Telephone: (215) 204-2679  
<http://www.temple.edu/employeehealth/>

- Employee Assistance Program  
Telephone: 1-888-267-8126  
<http://www.temple.edu/hr/departments/benefits/eap.htm>
- Philadelphia Center Against Sexual Violence (WOAR)  
Telephone: (215) 985-3333  
<http://www.woar.org>

Students and employees who have experienced sexual misconduct can report confidentially to:

- The Psychological Services Center (PSC)  
Telephone: (215) 204-7100 or e-mail [psc@temple.edu](mailto:psc@temple.edu) to request an appointment.

The PSC is located in Temple University's Entertainment and Community Education Center (ECEC) at 1509 Cecil B. Moore Ave, Suite 420, Philadelphia, PA 19121.

Regardless of where an incident of sexual misconduct occurs, Temple will provide those who report experiencing sexual assault, domestic or dating violence, stalking, or sexual exploitation with a copy of the university's policy or other statement containing a written explanation of their rights and options.

#### • **Formal Complaints**

A person wishing to file a Formal Complaint of sexual misconduct may contact the Title IX Coordinator or Campus Safety Services, who are primarily responsible for coordinating university investigations of these complaints. At the Complainant's request, the Philadelphia Police Department's Special Victims Unit will be contacted to lead any criminal investigation. All Formal Complaints will be treated privately as possible, consistent with applicable legal requirements and customary law enforcement practices. Individual Complainants will be informed promptly of available support services, as well as legal and administrative options, if reasonably available, such as protection from abuse orders through an appropriate court of law and changes to housing assignments and academic or work schedules.

Whether or not criminal charges are filed, a person may file a complaint with the university. If appropriate, the matter will be addressed pursuant to the university's policy on Preventing and Addressing Sexual Misconduct. Alternatively, the matter may be referred to and reviewed pursuant to other applicable policies, such as the Student Conduct Code, the Employee Manual, Rules of Conduct, or other relevant policies.

Complainants will be informed about the outcome of any investigation undertaken by the university. In addition, under appropriate circumstances, the university will inform members of the university community of reported sexual misconduct without identifying the individual Complainant. In appropriate cases, reports made to Campus Safety Services will automatically be referred to the Office of Student Conduct and Community Standards



- **Informal Complaints**

If a person reports to a university administrator, department head, faculty member, or Equal Opportunity Ombudsperson that they have experienced sexual misconduct but chooses not to file a Formal Complaint at that time, the Complainant will be promptly contacted by the Title IX Coordinator ([sexualmisconduct.temple.edu](http://sexualmisconduct.temple.edu)) or their designee.

Informal Complaints to university personnel will be treated as privately as possible consistent with applicable legal requirements and safety considerations. Complainants will be contacted by the Title IX Coordinator, ([sexualmisconduct.temple.edu](http://sexualmisconduct.temple.edu)) or their designee to discuss available supportive measures and resources, to understand the Complaint's wishes, and to explain the process of filing a Formal Complaint should the Complainant wish to do so.

Any individual may bring an Informal Complaint to the attention of the university, regardless of whether they are a member of the Temple community or whether they have personally experienced the conduct at issue. A Reporter may include, but is not limited to, a friend, parent of the Complainant or a witness to the sexual misconduct.

The Title IX Coordinator may be contacted at any time by any of the following methods to bring an Informal Complaint to the attention of the university:

- In person: Sullivan Hall, Floor 2M, 1330 Polett Walk, Philadelphia, PA 19122
- By phone at: (215) 204-3283
- By email at: [TitleIX@temple.edu](mailto:TitleIX@temple.edu)

- **Information about Support Services**

Individuals who report experiencing sexual misconduct will be promptly informed in writing of available support services, as well as legal and administrative options, if reasonably available at Temple or the local community, such as protection from abuse orders through an appropriate court of law and changes to housing assignments and academic or work schedules. Other accommodations that may be available are institutional stay-away orders, counseling services, financial aid advising or support, and immigration and visa information.

## STUDENT CONDUCT PROCEEDINGS IN CASES OF SEXUAL MISCONDUCT<sup>3</sup>

In appropriate cases, Formal Complaints of Sexual Harassment (as defined by the university's policy on Preventing and Addressing Sexual Misconduct) will lead to the initiation of disciplinary procedures, which will include a non-criminal fact finding investigation. As set forth in the university's policy on Preventing and Addressing Sexual Misconduct and the university's Student Conduct Code, the university disciplinary process will be prompt, fair, transparent and conducted by impartial board members or a



**This Allied Universal Officer remains vigilant while patrolling the assigned sector on Main Campus.**

third party neutral. These entities have appropriate training on issues of sexual assault, domestic and dating violence, stalking, and sexual exploitation and on conducting hearings that protect the safety of those who have experienced sexual misconduct and promote accountability. Training materials are available upon request from the Title IX Coordinator. The University policy provides that:

1. The Complainant and the Respondent each have timely notice of meetings and the opportunity to attend and to present evidence at a hearing before a properly trained hearing board that may be a third party neutral;
  2. The Complainant and the Respondent each have the opportunity to be advised by a personal advisor of their choice, at their expense, at any stage of the process and to be accompanied by that advisor at any meeting or hearing. If a student does not have an Advisor the university will provide an Advisor for the hearing. In Title IX proceedings Advisors will consult with their advisee and will be permitted to ask the other party and any witnesses all relevant questions and follow-up questions during the course of the hearing;
  3. A decision regarding responsibility is based on the "more likely than not" standard. In other words, the conduct process asks: "is it more likely than not that the Respondent violated the university's Student Conduct Code?";
- 3 The student conduct proceedings listed here were implemented in August, 2020. For the student conduct proceedings that were followed in cases of sexual misconduct prior to August, 2020, see p. 34.



4. The Complainant and the Respondent will be notified simultaneously in writing of any university disciplinary actions taken against the Respondent, as well as any changes to those disciplinary actions before they become final;
5. The Complainant and the Respondent each have the right to appeal the result of the hearing and will receive notice of their rights to appeal in writing; and
6. The Complainant and the Respondent will be notified simultaneously in writing of the final result after the appeal is resolved.

An individual who wishes to make a complaint through the student conduct process can consult with the Title IX Coordinator; a victim advocate in Campus Safety Services, (215) 204-5870; the Wellness Resources Center, (215) 204-8436; the Office of Student Conduct and Community Standards, (215) 204-3286; or the Sexual Assault Counseling and Education Unit of Tuttleman Counseling Services, (215) 204-7276 for more information on what to expect in the conduct process and to receive support through that process.

Student conduct records are confidential student records and will not be released to the public except as required by law.

Temple University is aware of the sensitive nature of sexual misconduct complaints and can make accommodations to address

an individual's need for separation from the Respondent, while also balancing the rights of the Respondent. University sanctions, up to and including separation from the university, may be imposed upon those determined to have violated the university's policies related to sexual assault, domestic or dating violence, stalking, sexual exploitation, and other forms of sexual harassment. For students, sexual assault, domestic or dating violence, stalking, sexual exploitation, and other forms of sexual harassment are violations of the university's Policy on Preventing and Addressing Sexual Misconduct and/or the university's Student Conduct Code, subjecting a Respondent to disciplinary sanctions up to and including expulsion from the university. Sexual assault, domestic or dating violence, stalking, and sexual exploitation are criminal acts which also subjects the perpetrator to criminal and civil penalties under federal and state law.

Sanctions for students found responsible for sexual assault, domestic or dating violence, stalking, sexual exploitation, and/or other forms of sexual harassment can include, individually or collectively:

- disciplinary probation
- no-contact orders
- suspension or expulsion from university housing
- educational programming
- suspension or expulsion from the university

**The Temple "T" represents strength and positive character, with open ends that are symbolic of the free exchange of ideas that is the hallmark of a Temple education.**





The Temple seal on the Main Campus gate welcomes visitors.

## PRIOR STUDENT CONDUCT PROCEEDINGS IN CASES OF SEXUAL MISCONDUCT<sup>4</sup>

In appropriate cases, complaints will lead to the initiation of disciplinary procedures, which will include a non-criminal fact finding investigation. As set forth in the university's Policy on Preventing and Addressing Sexual Misconduct and the university's Student Conduct Code, the university disciplinary process will be prompt, fair, transparent and conducted by impartial board members or a third party neutral. These entities have appropriate training on issues of sexual assault, domestic and dating violence, stalking, and sexual exploitation and on conducting hearings that protect victim's safety and promote accountability. The Student Conduct Code provides that:

1. The accuser and the accused student each have timely notice of meetings and the opportunity to attend and to present evidence at a hearing before a properly trained hearing board that may be a third party neutral;
2. The accuser and the accused student each have the opportunity to be advised by a personal advisor of their choice, at their expense, at any stage of the process and to be accompanied by that advisor at any meeting or hearing. Advisors may only consult and their advisee, but not speak for the advisee at any meeting or hearing;
3. A student conduct decision is based on the "more likely than not" standard. In other words, the conduct process asks: "is it more likely than not that the accused student violated the university's Student Conduct Code?";
4. The accuser and the accused student will be notified simultaneously in writing of any university disciplinary actions taken against the accused student, as well as any changes to those disciplinary actions before they become final;
5. The accuser and the accused student each have the right to appeal the result of the hearing and will receive notice of their rights to appeal in writing;
6. The accuser and the accused student will be notified simultaneously in writing of the final result after the appeal is resolved.

A victim who wishes to make a complaint through the student conduct process can consult with the Title IX Coordinator; a victim advocate in Campus Safety Services, (215) 204-5870; the Wellness Resources Center, (215) 204-8436; the Office of Student Conduct and Community Standards, (215) 204-3286; or the Sexual Assault Counseling and Education Unit of Tuttleman Counseling Services (215) 204-7276 for more information on what to expect in the conduct process and to receive support through that process.

Student conduct records are confidential student records and will not be released to the public except as required by law.

Temple University is aware of the sensitive nature of sexual misconduct complaints and can make accommodations to address a victim's need for separation from the accused, while also balancing the rights of the accused. University sanctions, up to and including separation from the university, may be imposed upon those determined to have violated the university's policies related to sexual assault, domestic or dating violence, stalking, and sexual exploitation. For students, sexual assault, domestic or dating violence, stalking, and sexual exploitation are violations of the university's Policy on Preventing and Addressing Sexual Misconduct and/or the university's Student Conduct Code, subjecting a perpetrator to disciplinary sanctions up to and including expulsion from the university. Sexual assault, domestic or dating violence, stalking, and sexual exploitation are criminal acts which also subjects the perpetrator to criminal and civil penalties under federal and state law.

Sanctions for students found responsible for sexual assault, domestic or dating violence, stalking, sexual exploitation can include, individually or collectively:

- disciplinary probation
- no-contact orders
- suspension or expulsion from university housing
- educational programming
- suspension or expulsion from the university

<sup>4</sup> These student conduct proceedings were followed prior to August, 2020.



## ASSISTANCE FOR INDIVIDUALS WHO EXPERIENCE SEXUAL MISCONDUCT

University internal investigations and any disciplinary or remedial actions are independent of any civil, criminal or external administrative investigation. The university may pursue an investigation, take appropriate remedial action and/or impose disciplinary sanctions against a member of the university community at the same time the individual is facing criminal charges for the same incident, even if the criminal prosecution is pending, has been dismissed, or the charges have been reduced.

Whether or not an individual elects to report the sexual misconduct to police, with the individual's cooperation and consent, university offices, including the Title IX Coordinator, Campus Safety Services, Tuttleman Counseling Services, the Wellness Resource Center, and the victim advocate at Campus Safety Services will work cooperatively to ensure that the individual's health, physical safety, and academic status are protected. For example, if reasonably available, an individual may be offered changes to academic, work, or living situations in addition to counseling, health services and assistance in notifying appropriate local law enforcement, if so desired

Student counseling services are available at Tuttleman Counseling Services (<https://counseling.temple.edu/>). Within Tuttleman Counseling Services, if requested, the Sexual Assault Counseling and Education (SACE) coordinator can coordinate assistance and support for persons who report having experienced sexual assault, domestic violence, dating violence, stalking, sexual exploitation,

and/or other forms of sexual harassment, including coordination of matters relating to the person's physical and mental health, personal safety, and academic status. The SACE coordinator can keep conversations and interactions with victims of sexual misconduct confidential.

An individual who has experienced sexual assault, domestic violence, dating violence, stalking, sexual exploitation, or other forms of sexual harassment can obtain additional support through the Wellness Resource Center (<https://wellness.temple.edu/>) or the university's Title IX Coordinator, Andrea Seiss, located in Sullivan Hall, Floor 2M [(215) 204-3283]. Due to various reporting requirements, the Wellness Resource Center and Office of Equal Opportunity Compliance personnel and the Title IX Coordinator will handle all information they receive discreetly, however, their interactions with a complainant are not confidential.

Protection from abuse orders may be available through an appropriate court. Campus Safety Services can also issue preliminary verbal directives requiring two parties not interact with one another.

Other resources available to persons who report experiencing sexual assault, domestic violence, dating violence, stalking, and/or sexual exploitation, include:

- Philadelphia Police (9-1-1)
- The Philadelphia Sexual Assault Response Center, (215) 800-1589
- North Central Victims Services Counseling Services, (215) 763-3282
- Women in Transition Counseling, (215) 763-1111
- Philadelphia Center Against Sexual Violence (WOAR) Hotline, (215) 985-3333
- Pennsylvania Coalition Against Rape—<http://www.pcar.org/>
- Pennsylvania Coalition Against Domestic Violence—<http://www.pcadv.org/>
- Rape, Abuse and Incest National Network—<https://www.rainn.org/>
- The National Center for Victims of Crime—<http://www.victimsofcrime.org/>
- National Organization of Male Sexual Victimization—[https://www.malesurvivor.org](https://www.malesurvivor.org/)

Support resources in Temple University Harrisburg include:

- YWCA of Greater Harrisburg 24-Hour Hotline, 1-800-654-1211
- YWCA Domestic Violence Legal Center, (717) 724-0516: Offers legal aid for victims of domestic violence
- MidPenn Legal Services, (717) 232-0581: Offers assistance in filling a protection from abuse petition

Department of Justice, Office on Violence Against Women—<https://www.justice.gov/ovw/sexual-assault>



The university's Title IX Coordinator's office is located in Sullivan Hall on Main Campus.



Students or employees who report that they have experienced domestic violence, dating violence, sexual assault, stalking, or sexual exploitation, whether the offense occurred on or off campus, will be provided with a written explanation of the rights and options available to them at the university and how to request appropriate protective measures at: <https://sexualmisconduct.temple.edu/>

## INFORMATION AND ASSISTANCE FOR RESPONDENTS

If you have been accused of sexual misconduct, the investigation process can be stressful. Temple provides a number of resources that can help you understand the university's processes, obtain reasonable academic or other accommodations, and access university or community support services, including counseling and health services.

- Title IX Coordinator  
Andrea Seiss  
Sullivan Hall, Floor 2M  
Telephone: (215) 204-3283
- Tuttleman Counseling Services  
Telephone: (215) 204-7276  
<https://counseling.temple.edu/>
- Student Health Services  
Telephone: (215) 204-7500  
<http://www.temple.edu/studenthealth/>

## INFORMATION REGARDING REGISTERED SEX OFFENDERS

Information regarding registered sex offenders in the campus community can be obtained by accessing [www.pameganslaw.state.pa.us](http://www.pameganslaw.state.pa.us). Information about sexually violent predators is also accessible at this website.

## POLICIES CONCERNING STUDENTS/EMPLOYEES WITH CRIMINAL RECORDS

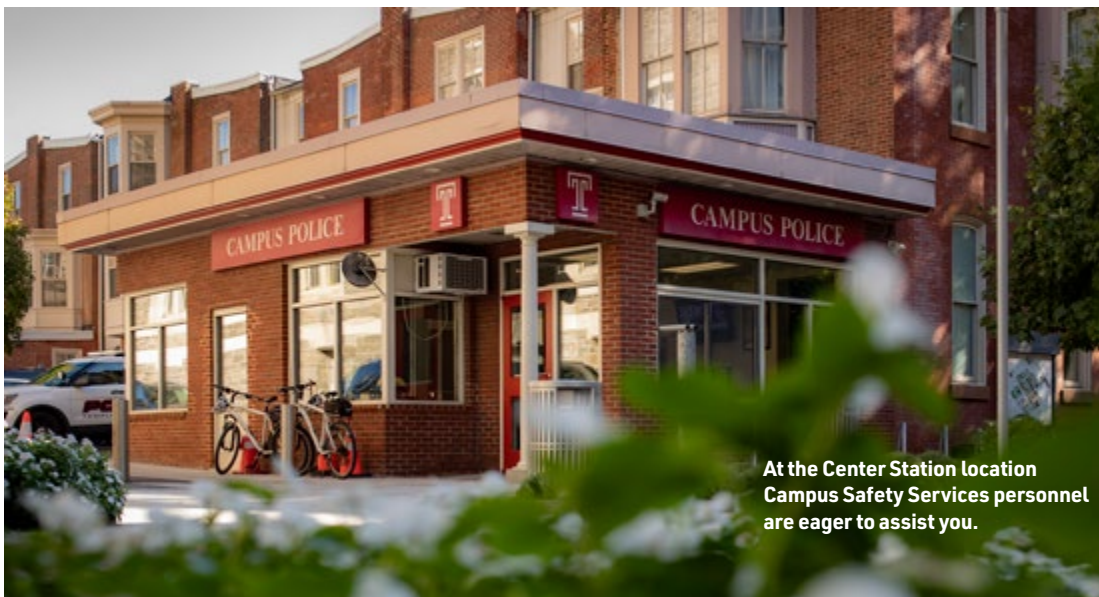
Temple University does not conduct background investigations on prospective students. If Temple receives information in the application process concerning a prospective student's criminal conduct, it is given appropriate consideration. Currently enrolled students who are charged with and/or convicted of a criminal offense are subject to Temple's Student Conduct Code and the full range of available disciplinary sanctions.

Temple University employs about 9,219 non-student employees. Temple University conducts background checks for individuals recommended for hire in certain selected positions. Examples of the type of positions for which Temple University may conduct a background check include, but are not limited to:

1. Positions that are designated as financially sensitive, such as billers, medical receptionists/schedulers, and cashiers,
2. Positions that require driving as an essential duty of the position, such as drivers, coaches, and refuse haulers,
3. Positions that involve work with minors,
4. Positions that are safety sensitive, such as security officers and police officers, and
5. Positions that have access to student living areas.

Background checks include, depending on the position, a criminal history check, a civil litigation check, a driving record check, a child abuse check, a credit/bankruptcy check, and/or a drug/alcohol screening. A complete list of positions subject to these checks is available in the Human Resources Department. Information received will be considered carefully in the context of the essential duties of the position. Information received through the background check process will not necessarily disqualify the applicant from further

consideration or eventual hiring. The results of any check will be considered in light of surrounding circumstances, including, and without limitation to, the nature and gravity of the incident(s) reported, the time that has passed since, remedial actions taken by the individual, and the nature of the position and the potential impact of the incident(s) on the person's ability to safely and appropriately perform the duties of the job.



**At the Center Station location  
Campus Safety Services personnel  
are eager to assist you.**

---

**Temple University is committed to providing a tobacco-free environment for the entire Temple community. Tobacco use, including smoking, is prohibited on Temple's property, as well as within 20 feet of a main entrance, exit, or operable window of a university building.**

## FIRE SAFETY

### Fire Safety Features in On-Campus Student Housing Facilities

The on-campus student housing facilities at Temple University have a variety of fire safety features, as indicated below. All halls have automatic sprinkler systems, building alarm systems (which Temple Police monitor), fire extinguishers, and fire rated doors.

| STUDENT HOUSING ON-CAMPUS   | SUPERVISED FIRE ALARM SYSTEM | SMOKE DETECTOR IN EACH SLEEPING ROOM | FULL SPRINKLER SYSTEM |
|---|------------------------------|--------------------------------------|-----------------------|
| 1300 Residence Hall<br>1300 Cecil B. Moore Ave.                         | Yes                          | Yes                                  | Yes                   |
| 1940 Residence Hall<br>1940 Liacouras Walk                              | Yes                          | Yes                                  | Yes                   |
| Beech International Village <sup>1</sup><br>1520 Cecil B. Moore Ave.    | Yes                          | Yes                                  | Yes                   |
| Hardwick Hall<br>2029 N. Broad Street                                   | Yes                          | Yes                                  | Yes                   |
| Johnson Hall<br>2029 N. Broad Street                                    | Yes                          | Yes                                  | Yes                   |
| Kardon Apartments <sup>1</sup><br>1801 N. 10th Street                   | Yes                          | Yes                                  | Yes                   |
| Morgan Hall<br>1601 N. Broad Street                                     | Yes                          | Yes                                  | Yes                   |
| Podiatric Housing <sup>2</sup><br>8th and Cherry Street                 | Yes                          | Yes                                  | Yes                   |
| Temple Towers<br>1200 Cecil B. Moore Ave.                               | Yes                          | Yes                                  | Yes                   |
| The Edge <sup>1</sup><br>1601 N. 15th Street                            | Yes                          | Yes                                  | Yes                   |
| The Nest <sup>1</sup><br>1324 N. Broad Street                           | Yes                          | Yes                                  | Yes                   |
| The View <sup>1</sup><br>1100 W. Montgomery Avenue                      | Yes                          | Yes                                  | Yes                   |
| University Village <sup>1</sup><br>1701 N. 10th Street                  | Yes                          | Yes                                  | Yes                   |
| White Hall<br>2108 N. Broad Street                                      | Yes                          | Yes                                  | Yes                   |
| Residence Candia <sup>3</sup><br>Via Candia 135<br>00192 Roma, RM Italy | No                           | No                                   | No                    |

<sup>1</sup> Denotes student housing managed by private developer.

<sup>2</sup> Denotes student housing for Podiatry Campus.

<sup>3</sup> Denotes student housing for Temple Rome Campus.

In addition to the foregoing safety features, fire drills are conducted in each of these buildings (except Residence Candia) twice per year to ensure that students are aware of procedures to follow in the event of an actual fire.



## PROHIBITED ITEMS

To prevent fire or spread of fire, the following items are prohibited in the residential halls (for a full list, see <https://housing.temple.edu/resources-and-services/rights-and-responsibilities>):

- Candles
- Incense
- Live Christmas trees
- Portable heaters
- Appliances exceeding 50 watts
- Heat generating appliances (toasters, heat lamps, tanning lamps, convection ovens, etc.)
- Hot plates
- Ceiling tapestries
- Aromatherapy oil burners
- Extension cords
- Halogen lamps/bulbs
- Electric skateboards (e.g. Hover-boards/scooters)

## SMOKING AND TOBACCO USE

The following information is drawn from Temple University's policy on Smoking and Tobacco Use, which can be found at <https://secretary.temple.edu/sites/secretary/files/policies/04.62.11.pdf>.

Temple University is committed to providing a tobacco-free environment for the entire Temple community. The tobacco-free campus policy applies to all U.S. Temple University facilities, properties, and vehicles owned or leased in the U.S., regardless of location. Tobacco use, including smoking, is prohibited on Temple's U.S. campus property, including, but not limited to, offices, classrooms, hallways, waiting rooms, restrooms, meeting rooms, common areas, performance venues, and residential space within University housing, as well as all outdoor Temple campus property in the U.S., including, but not limited to: parking lots, loading docks, covered entrances, paths, fields, sports/recreational facilities, stadiums, walkways and plazas. Tobacco use is prohibited in all Temple vehicles (owned or leased in the U.S.), regardless of location. Tobacco use is also prohibited on public sidewalks and streets within twenty (20) feet of an entrance to a Temple building.

All university students, faculty, administrators, staff and visitors are responsible for cooperating to achieve the goal of this policy.

Violations of Temple's policy on Smoking and Tobacco use by students is a violation under the Student Conduct Code, which will be handled in accordance with the Code. Violations of this policy by residential students in university housing facilities will be addressed by the residential judicial system. Violations of this policy by employees will be handled in accordance with rules and regulations in the Employee Manual.

## PROCEDURES FOR EVACUATING STUDENT HOUSING IN CASE OF FIRE

With the exception of Morgan Hall (North and South) and The Edge, all on-campus student housing facilities must fully evacuate upon activation of the fire alarm. At Morgan Hall (North and South) and The Edge, evacuation occurs on the floor of the alarm and on the floors above and below the alarm. The remaining floors should await notification and instructions from the Fire Marshal or other university personnel regarding evacuation.

- If you discover a fire or smell smoke, sound the building fire alarm. Know the location of the alarm signal stations and how they operate. The security officer stationed in the lobby will call Temple Police when an alarm is transmitted. Temple Police will notify the Fire Department without delay by dialing 9-1-1.
- When the fire alarm sounds, **leave at once**. Close all doors behind you. Proceed into the fire exit and leave the building.
- **Do not use the elevators**. They will stop if power fails, causing occupants to become trapped. Elevator shafts are like chimneys. Smoke could enter the elevator shaft thereby asphyxiating the occupants trying to evacuate the building. Use the stairs.
- Feel the door that leads from your room to the corridor before opening it. If it is hot or smoke is seeping in, do not open it. If you become trapped in your room and cannot reach the fire exit, keep the door closed and seal off any cracks. Use a phone to **call the Fire Department by dialing 9-1-1 or (215) 204-1234** and give your specific location including the floor and room number.
- If the door feels cool, open cautiously. Be braced to slam it shut if the corridor is full of smoke or if you feel heat pressure against the door. If the corridor is clear, proceed with the escape plan.
- After leaving the building, **keep moving for at least 200 feet and proceed to the designated rally point**. Do not reenter until given permission by Temple Police or the Fire Department.
- **People with Mobility Limitations:** Responsible person or persons should be designated to assist students and employees in the event of fire. Persons needing assistance to exit a building should be taken into the fire exit and remain on the landing. Once situated on the stairwell landing, **call Temple Police at (215) 204-1234 or the Philadelphia Fire Department at 9-1-1**. Identify which stairwell you are in and on which floor you are located. Be sure to indicate if you require special equipment to descend the stairs. The Fire Department should arrive in minutes to assist.
- If caught in smoke or heat, stay low where air is better. Take short breaths through the nose until you reach an *Area of Refuge*.
- **Keep all fire exit and corridor doors closed at all times**. These doors are fire-rated to keep smoke and heat from entering stairways and adjoining corridors. If at any time you observe these doors propped or tied open, please close them and report the location to the university Fire Marshal, (215) 204-7938.

## FIRE SAFETY EDUCATION

Fire prevention, evacuation, and fire extinguisher training are provided for all Resident Directors, Resident Assistants, and other residence hall staff.

If a fire occurs, students are instructed to leave hazardous areas using the established evacuation routes and get to a predetermined rally point before calling 9-1-1 for help. They are to remain at the rally point so that the director of Student Housing or someone from the Student Housing office has documented that the student has left the building. RAs are instructed to pull the fire alarm as they are leaving the building if they can do so without risking their safety.

Additionally, Temple Police and security officers are designated by the university and trained to assist in safe and orderly emergency evacuation for all types of emergency situations. These employees will help direct all employees and students during emergency evacuation, serve as a resource of information about emergency procedures, and conduct head counts once evacuation has been completed.

## REPORTING A FIRE “AFTER THE FACT” FOR STATISTICAL PURPOSES

Temple University is required under federal law to annually disclose statistical data on all fires that occur in on-campus student housing facilities. Listed below are the **non-emergency** numbers to call to report fires that have already been extinguished in on-campus student housing.

**Campus Safety Services** (215) 204-1234

**Fire Marshal's Office** (215) 204-7938

## FUTURE IMPROVEMENTS IN FIRE SAFETY

The Temple University Fire Prevention Plan (FPP) applies to all operations in the university where employees and students may encounter a fire. This FPP is in place at the university to control and reduce the possibility of fire and to specify the type of equipment to use in case of fire.

Under this plan, employees and students will be informed of the plan's purpose, preferred means of reporting fires and other emergencies, types of evacuations to be used in various emergency situations, and the alarm systems. The FPP communicates to employees and students policies and procedures to follow when fires erupt. This written plan is available, upon request, to employees and students, their designated representatives, and any Occupational Safety and Health Administration (OSHA) officials who ask to see it. The written program is kept in the Fire Marshal's Office. The plan is periodically reviewed and updated. Copies of this plan may be obtained from the Fire Marshal's Office and the Workers' Compensation Manager.

Temple University is committed to the success of the FPP, striving for clear understanding, safe behavior, and involvement in the program for everyone. All suggestions and improvements to the Plan are welcome. **Please address any comments to University Fire Marshal John Higgins at (215) 204-8687.**



**Fire Marshal John Maule inspects the fire alarm box for proper functional operation.**

## FIRE STATISTICS

The following table shows the fire statistics of each on-campus housing facility over the last three years.

| ON-CAMPUS STUDENT HOUSING FACILITY                                   | TOTAL FIRES SINCE 2017 | DATE OF FIRE | CAUSE               | DESCRIPTION  | INJURIES | DEATHS | PROPERTY DAMAGE |
|--|------------------------|--------------|---------------------|--|----------|--------|-----------------|
| 1300 Residence Hall<br>1300 Cecil B. Moore Ave.                      | 0                      | N/A          | N/A                 | N/A  | 0        | 0      | \$0             |
| 1940 Residence Hall<br>1940 Liacouras Walk                           | 0                      | N/A          | N/A                 | N/A  | 0        | 0      | \$0             |
| Beech International Village <sup>1</sup><br>1520 Cecil B. Moore Ave. | 0                      | N/A          | N/A                 | N/A  | 0        | 0      | \$0             |
| Hardwick Hall<br>2029 N. Broad Street                                | 0                      | N/A          | N/A                 | N/A  | 0        | 0      | \$0             |
| Johnson Hall<br>2029 N. Broad Street                                 | 0                      | N/A          | N/A                 | N/A  | 0        | 0      | \$0             |
| Kardon Apartments <sup>1</sup><br>1801 N. 10th Street                | 1                      | 05/09/17     | Cooking             | Apartment fire extinguished by sprinklers          | 0        | 0      | \$12,000.00     |
| Morgan Hall<br>1601 N. Broad Street                                  | 1                      | 12/04/17     | Open Flame          | Trashcan fire                                      | 0        | 0      | \$3,500.00      |
| Peabody Hall <sup>2</sup><br>2025 N. Broad Street                    | 0                      | N/A          | N/A                 | N/A  | 0        | 0      | \$0             |
| Podiatric Housing <sup>3</sup><br>8th and Cherry Street              | 1                      | 01/03/17     | Electrical fire     | Motor malfunction in mechanical room               | 0        | 0      | \$900.00        |
| Temple Towers<br>1200 Cecil B. Moore Ave.                            | 0                      | N/A          | N/A                 | N/A  | 0        | 0      | \$0             |
| The Edge <sup>1</sup><br>1601 N. 15th Street                         | 2                      | 03/11/18     | Cooking             | Apartment fire extinguished by sprinklers          | 2        | 0      | \$80,000.00     |
|  |                        | 08/25/18     | Accidental          | Item left on stove, extinguished by sprinklers     | 0        | 0      | \$17,000.00     |
| The Nest <sup>1</sup><br>1324 N. Broad Street                        | 0                      | N/A          | N/A                 | N/A  | 0        | 0      | \$0             |
| The View <sup>1</sup><br>1101 W. Montgomery Avenue                   | 0                      | N/A          | N/A                 | N/A  | 0        | 0      | \$0             |
| University Village <sup>1</sup><br>1701 N. 10th Street               | 1                      | 10/28/19     | Incense in trashcan | Apartment fire extinguished with fire extinguisher | 1        | 0      | \$5,000.00      |
| White Hall<br>2108 N. Broad Street                                   | 0                      | N/A          | N/A                 | N/A  | 0        | 0      | \$0             |
| Residence Candia <sup>4</sup><br>Via Candia 135<br>00192 Roma        | 0                      | N/A          | N/A                 | N/A  | 0        | 0      | \$0             |

1 Denotes student housing managed by private developer.

2 No longer in service beginning academic year 2017-18.

3 Denotes student housing for Podiatry Campus.

4 Denotes student housing for Temple Rome Campus.



---

**The Jeanne Clery Disclosure of Campus Security Policy and Campus Crime Statistics Act [20 U.S.C. § 1092(f)] is a federal law that requires colleges and universities to disclose information about crime on and around their campuses.**

**The following pages provide crime rates and statistics for each of Temple's campuses for the 2019, 2018, and 2017 calendar years as required by federal law.**

## CRIME RATES AND STATISTICS

The Jeanne Clery Disclosure of Campus Security Policy and Campus Crime Statistics Act [20 U.S.C. § 1092(f)] is a federal law that requires colleges and universities to disclose information about crime on and around their campuses. The following pages provide crime rates and statistics for each of Temple's campuses for the 2019, 2018, and 2017 calendar years as required by federal law.

The Clery Act requires that the following "Clery crimes" be reported:

- Murder
- Robbery
- Burglary
- Arson
- Sex Offenses
- Liquor Law Violation
- Weapons Possession
- Stalking
- Manslaughter by Negligence
- Aggravated Assault
- Motor Vehicle Theft
- Domestic Violence
- Dating Violence
- Drug Abuse Violation
- Hate Crime

These crimes are sorted by year and location of occurrence.

**Note:** Crimes reported in the "On Campus Student Housing" columns are also accounted for in the "On-Campus" column.

Information on reported hate crimes for each campus is also provided and includes statistics obtained from local law enforcement using good faith efforts. This information includes the year of the incident, the type of offense, where the incident occurred on campus, and the type of discrimination involved. Types of discrimination reported include discrimination based on race, gender, religion, national origin, sexual orientation, gender identity, ethnicity, or disability.

In addition, The Pennsylvania Uniform Crime Reporting Act mandates the release of crime statistics and rates to matriculated students and employees, and, upon request, to new employees and applicants for admission. The index rate is calculated by multiplying the actual number of reported offenses by 100,000 (a theoretical population for comparison purposes) and dividing that product by the number of the University's Full Time Equivalent (FTE) students and employees. The FTE is calculated using a state required formula.

**Note:** The FTE figure does not include the large number of people who visit our campuses every day. If the number of campus visitors were included, the actual Crime Index rates would be substantially lower.



**Police Officer Bryan Schafer greets students and encourages them to use resources as they acclimate to their new surroundings.**

# MAIN CAMPUS

|  | ON CAMPUS |           |           | RESIDENCE HALL † |           |           | NON-CAMPUS |          |          | PUBLIC PROPERTY |           |           |
|--|-----------|-----------|-----------|------------------|-----------|-----------|------------|----------|----------|-----------------|-----------|-----------|
|  | 2019      | 2018      | 2017      | 2019             | 2018      | 2017      | 2019       | 2018     | 2017     | 2019            | 2018      | 2017      |
| <b>CLERY CRIMES</b>                          |           |           |           |                  |           |           |            |          |          |                 |           |           |
| Murder/Non-Negligent Manslaughter            | 0         | 0         | 0         | 0                | 0         | 0         | 0          | 0        | 0        | 0               | 0         | 0         |
| Manslaughter by Negligence                   | 0         | 0         | 0         | 0                | 0         | 0         | 0          | 0        | 0        | 0               | 0         | 0         |
| Sex Offenses: Rape                           | 3         | 7         | 12        | 3                | 7         | 11        | 2          | 4        | 2        | 0               | 0         | 0         |
| Sex Offenses: Fondling                       | 8         | 6         | 5         | 6                | 5         | 5         | 2          | 4        | 3        | 3               | 7         | 12        |
| Sex Offenses: Incest                         | 0         | 0         | 0         | 0                | 0         | 0         | 0          | 0        | 0        | 0               | 0         | 0         |
| Sex Offenses: Statutory Rape                 | 0         | 0         | 0         | 0                | 0         | 0         | 0          | 0        | 0        | 0               | 0         | 0         |
| Robbery                                      | 4         | 5         | 2         | 1                | 0         | 0         | 0          | 0        | 0        | 24              | 14        | 16        |
| Aggravated Assault                           | 4         | 2         | 5         | 1                | 1         | 1         | 0          | 0        | 1        | 9               | 3         | 8         |
| Burglary                                     | 7         | 13        | 29        | 5                | 0         | 8         | 2          | 0        | 0        | 0               | 0         | 0         |
| Motor Vehicle Theft                          | 0         | 0         | 0         | 0                | 0         | 0         | 0          | 0        | 0        | 9               | 5         | 8         |
| Arson  | 0         | 0         | 1         | 0                | 0         | 0         | 0          | 0        | 0        | 0               | 0         | 0         |
| <b>TOTAL</b>                                 | <b>26</b> | <b>33</b> | <b>54</b> | <b>16</b>        | <b>13</b> | <b>25</b> | <b>6</b>   | <b>8</b> | <b>6</b> | <b>45</b>       | <b>29</b> | <b>44</b> |
| <b>HATE CRIMES</b>                           |           |           |           |                  |           |           |            |          |          |                 |           |           |
| Murder/Non-Negligent Manslaughter            | 0         | 0         | 0         | 0                | 0         | 0         | 0          | 0        | 0        | 0               | 0         | 0         |
| Manslaughter by Negligence                   | 0         | 0         | 0         | 0                | 0         | 0         | 0          | 0        | 0        | 0               | 0         | 0         |
| Sex Offenses: Rape                           | 0         | 0         | 0         | 0                | 0         | 0         | 0          | 0        | 0        | 0               | 0         | 0         |
| Sex Offenses: Fondling                       | 0         | 0         | 0         | 0                | 0         | 0         | 0          | 0        | 0        | 0               | 0         | 0         |
| Sex Offenses: Incest                         | 0         | 0         | 0         | 0                | 0         | 0         | 0          | 0        | 0        | 0               | 0         | 0         |
| Sex Offenses: Statutory Rape                 | 0         | 0         | 0         | 0                | 0         | 0         | 0          | 0        | 0        | 0               | 0         | 0         |
| Robbery                                      | 0         | 0         | 0         | 0                | 0         | 0         | 0          | 0        | 0        | 0               | 0         | 0         |
| Aggravated Assault                           | 0         | 0         | 0         | 0                | 0         | 0         | 0          | 0        | 0        | 0               | 0         | 0         |
| Burglary                                     | 0         | 0         | 0         | 0                | 0         | 0         | 0          | 0        | 0        | 0               | 0         | 0         |
| Motor Vehicle Theft                          | 0         | 0         | 0         | 0                | 0         | 0         | 0          | 0        | 0        | 0               | 0         | 0         |
| Arson  | 0         | 0         | 0         | 0                | 0         | 0         | 0          | 0        | 0        | 0               | 0         | 0         |
| Larceny-Theft                                | 0         | 0         | 0         | 0                | 0         | 0         | 0          | 0        | 0        | 0               | 0         | 0         |
| Simple Assault                               | 0         | 0         | 0         | 0                | 0         | 0         | 0          | 0        | 0        | 0               | 1         | 0         |
| Intimidation                                 | 7         | 5         | 4         | 3                | 3         | 2         | 0          | 0        | 0        | 3               | 1         | 0         |
| Destruction/Damage/Vandalism of Property     | 1         | 3         | 4         | 1                | 1         | 2         | 0          | 0        | 0        | 0               | 0         | 0         |
| <b>TOTAL</b>                                 | <b>8</b>  | <b>8</b>  | <b>8</b>  | <b>4</b>         | <b>4</b>  | <b>4</b>  | <b>0</b>   | <b>0</b> | <b>0</b> | <b>3</b>        | <b>2</b>  | <b>0</b>  |
| <b>HATE CRIMES BY CATEGORIES</b>             |           |           |           |                  |           |           |            |          |          |                 |           |           |
| Race   | 3         | 4         | 2         | 2                | 1         | 1         | 0          | 0        | 0        | 2               | 0         | 0         |
| Gender                                       | 0         | 0         | 0         | 0                | 0         | 0         | 0          | 0        | 0        | 0               | 0         | 0         |
| Gender Identity                              | 1         | 0         | 0         | 0                | 0         | 0         | 0          | 0        | 0        | 0               | 0         | 0         |
| Religion                                     | 1         | 0         | 0         | 0                | 0         | 0         | 0          | 0        | 0        | 0               | 0         | 0         |
| Sexual Orientation                           | 0         | 3         | 1         | 0                | 2         | 1         | 0          | 0        | 0        | 1               | 1         | 0         |
| Ethnicity                                    | 2         | 1         | 3         | 2                | 1         | 1         | 0          | 0        | 0        | 0               | 0         | 0         |
| National Origin                              | 1         | 0         | 2         | 0                | 0         | 1         | 0          | 0        | 0        | 0               | 1         | 0         |
| Disability                                   | 0         | 0         | 0         | 0                | 0         | 0         | 0          | 0        | 0        | 0               | 0         | 0         |
| <b>TOTAL</b>                                 | <b>8</b>  | <b>8</b>  | <b>8</b>  | <b>4</b>         | <b>4</b>  | <b>4</b>  | <b>0</b>   | <b>0</b> | <b>0</b> | <b>3</b>        | <b>2</b>  | <b>0</b>  |
| <b>RELATIONSHIP VIOLENCE / VAWA OFFENSES</b> |           |           |           |                  |           |           |            |          |          |                 |           |           |
| Domestic Violence                            | 2         | 3         | 4         | 1                | 3         | 2         | 0          | 0        | 0        | 2               | 4         | 1         |
| Dating Violence                              | 8         | 4         | 5         | 6                | 4         | 3         | 0          | 0        | 0        | 2               | 0         | 6         |
| Stalking                                     | 18        | 17        | 3         | 12               | 5         | 1         | 0          | 0        | 0        | 2               | 3         | 3         |
| <b>TOTAL</b>                                 | <b>28</b> | <b>24</b> | <b>12</b> | <b>19</b>        | <b>12</b> | <b>6</b>  | <b>0</b>   | <b>0</b> | <b>0</b> | <b>6</b>        | <b>7</b>  | <b>10</b> |

† Crimes reported in the "Residence Hall" columns are also accounted for in the "On-Campus" column.  
 These crime statistics include reports from the students, staff, visitors, and those traversing the university area.



# MAIN CAMPUS, CONTINUED

|                                | ON CAMPUS  |            |            | RESIDENCE HALL ♦ |            |            | NON-CAMPUS |          |          | PUBLIC PROPERTY |            |            |
|--------------------------------|------------|------------|------------|------------------|------------|------------|------------|----------|----------|-----------------|------------|------------|
|                                | 2019       | 2018       | 2017       | 2019             | 2018       | 2017       | 2019       | 2018     | 2017     | 2019            | 2018       | 2017       |
| <b>ALCOHOL, DRUGS, WEAPONS</b> |            |            |            |                  |            |            |            |          |          |                 |            |            |
| Liquor Law Violation-Arrests   | 1          | 1          | 6          | 1                | 1          | 6          | 0          | 3        | 0        | 20              | 10         | 8          |
| Disciplinary Actions/Referrals | 315        | 328        | 462        | 307              | 325        | 461        | 2          | 5        | 5        | 23              | 14         | 14         |
| Drug Abuse Violations-Arrests  | 0          | 0          | 9          | 0                | 0          | 4          | 0          | 0        | 0        | 2               | 4          | 6          |
| Disciplinary Actions/Referrals | 46         | 97         | 59         | 46               | 96         | 57         | 0          | 0        | 0        | 13              | 3          | 0          |
| Weapons Possession/Arrests     | 0          | 0          | 0          | 0                | 0          | 0          | 0          | 0        | 0        | 2               | 1          | 0          |
| Disciplinary Actions/Referrals | 1          | 0          | 0          | 0                | 0          | 0          | 0          | 0        | 0        | 0               | 0          | 0          |
| <b>TOTAL</b>                   | <b>363</b> | <b>426</b> | <b>536</b> | <b>354</b>       | <b>422</b> | <b>528</b> | <b>2</b>   | <b>8</b> | <b>5</b> | <b>60</b>       | <b>32</b>  | <b>28</b>  |
| <b>NON-CLERY CRIMES</b>        |            |            |            |                  |            |            |            |          |          |                 |            |            |
| Simple Assault                 | 13         | 8          | 7          | 7                | 6          | 4          | 0          | 0        | 3        | 20              | 18         | 14         |
| Harassment                     | 124        | 99         | 87         | 57               | 41         | 34         | 1          | 0        | 0        | 69              | 49         | 49         |
| Forgery                        | 0          | 0          | 1          | 0                | 0          | 0          | 0          | 0        | 0        | 0               | 0          | 0          |
| Fraud                          | 17         | 15         | 20         | 12               | 11         | 10         | 0          | 0        | 0        | 2               | 0          | 1          |
| Theft                          | 152        | 177        | 161        | 16               | 15         | 32         | 2          | 1        | 2        | 121             | 130        | 105        |
| Vandalism                      | 33         | 32         | 36         | 10               | 12         | 7          | 0          | 2        | 0        | 50              | 37         | 48         |
| Disorderly Conduct             | 4          | 12         | 5          | 0                | 3          | 0          | 0          | 0        | 1        | 25              | 21         | 16         |
| Embezzlement                   | 0          | 0          | 0          | 0                | 0          | 0          | 0          | 0        | 0        | 0               | 0          | 0          |
| Receiving Stolen Property      | 0          | 0          | 0          | 0                | 0          | 0          | 0          | 0        | 0        | 0               | 0          | 0          |
| Prostitution                   | 0          | 0          | 0          | 0                | 0          | 0          | 0          | 0        | 0        | 0               | 0          | 0          |
| Sex Assault (Other)            | 6          | 0          | 0          | 1                | 0          | 0          | 0          | 0        | 0        | 0               | 2          | 0          |
| Gambling                       | 0          | 0          | 0          | 0                | 0          | 0          | 0          | 0        | 0        | 0               | 0          | 0          |
| Offenses Against Family        | 0          | 0          | 0          | 0                | 0          | 0          | 0          | 0        | 0        | 0               | 0          | 0          |
| Driving Under Influence        | 0          | 0          | 0          | 0                | 0          | 0          | 0          | 0        | 0        | 8               | 11         | 20         |
| Drunkenness                    | 19         | 30         | 19         | 10               | 11         | 13         | 0          | 0        | 0        | 58              | 49         | 31         |
| Vagrancy                       | 0          | 0          | 0          | 0                | 0          | 0          | 0          | 0        | 0        | 0               | 0          | 0          |
| All Other Offenses             | 9          | 10         | 9          | 1                | 2          | 2          | 0          | 0        | 0        | 65              | 42         | 29         |
| <b>TOTAL</b>                   | <b>377</b> | <b>383</b> | <b>345</b> | <b>114</b>       | <b>101</b> | <b>102</b> | <b>3</b>   | <b>3</b> | <b>6</b> | <b>418</b>      | <b>359</b> | <b>313</b> |

♦ Crimes reported in the "Residence Hall" columns are also accounted for in the "On-Campus" column.  
 These crime statistics include reports from the students, staff, visitors, and those traversing the university area.



**Officer James Jones talks with a student about how the Charles Library compliments the Main Campus.**

# HEALTH SCIENCES CENTER CAMPUS

|  | ON CAMPUS |           |          | NON-CAMPUS |          |          | PUBLIC PROPERTY |           |          |
|--|-----------|-----------|----------|------------|----------|----------|-----------------|-----------|----------|
|  | 2019      | 2018      | 2017     | 2019       | 2018     | 2017     | 2019            | 2018      | 2017     |
| <b>CLERY CRIMES</b>                          |           |           |          |            |          |          |                 |           |          |
| Murder/Non-Negligent Manslaughter            | 0         | 0         | 0        | 0          | 0        | 0        | 1               | 0         | 0        |
| Manslaughter by Negligence                   | 0         | 0         | 0        | 0          | 0        | 0        | 0               | 0         | 0        |
| Sex Offenses: Rape                           | 0         | 0         | 0        | 0          | 0        | 0        | 0               | 0         | 0        |
| Sex Offenses: Fondling                       | 1         | 2         | 0        | 0          | 0        | 0        | 0               | 0         | 0        |
| Sex Offenses: Incest                         | 0         | 0         | 0        | 0          | 0        | 0        | 0               | 0         | 0        |
| Sex Offenses: Statutory Rape                 | 0         | 0         | 0        | 0          | 0        | 0        | 0               | 0         | 0        |
| Robbery                                      | 2         | 0         | 0        | 0          | 0        | 0        | 4               | 7         | 2        |
| Aggravated Assault                           | 0         | 5         | 1        | 0          | 0        | 0        | 7               | 10        | 4        |
| Burglary                                     | 0         | 3         | 7        | 0          | 0        | 0        | 0               | 0         | 0        |
| Motor Vehicle Theft                          | 1         | 0         | 0        | 0          | 0        | 0        | 1               | 3         | 2        |
| Arson  | 0         | 0         | 0        | 0          | 0        | 0        | 0               | 0         | 1        |
| <b>TOTAL</b>                                 | <b>4</b>  | <b>10</b> | <b>8</b> | <b>0</b>   | <b>0</b> | <b>0</b> | <b>13</b>       | <b>20</b> | <b>9</b> |
| <b>HATE CRIMES</b>                           |           |           |          |            |          |          |                 |           |          |
| Murder/Non-Negligent Manslaughter            | 0         | 0         | 0        | 0          | 0        | 0        | 0               | 0         | 0        |
| Manslaughter by Negligence                   | 0         | 0         | 0        | 0          | 0        | 0        | 0               | 0         | 0        |
| Sex Offenses: Rape                           | 0         | 0         | 0        | 0          | 0        | 0        | 0               | 0         | 0        |
| Sex Offenses: Fondling                       | 0         | 0         | 0        | 0          | 0        | 0        | 0               | 0         | 0        |
| Sex Offenses: Incest                         | 0         | 0         | 0        | 0          | 0        | 0        | 0               | 0         | 0        |
| Sex Offenses: Statutory Rape                 | 0         | 0         | 0        | 0          | 0        | 0        | 0               | 0         | 0        |
| Robbery                                      | 0         | 0         | 0        | 0          | 0        | 0        | 0               | 0         | 0        |
| Aggravated Assault                           | 0         | 0         | 0        | 0          | 0        | 0        | 0               | 0         | 0        |
| Burglary                                     | 0         | 0         | 0        | 0          | 0        | 0        | 0               | 0         | 0        |
| Motor Vehicle Theft                          | 0         | 0         | 0        | 0          | 0        | 0        | 0               | 0         | 0        |
| Arson  | 0         | 0         | 0        | 0          | 0        | 0        | 0               | 0         | 0        |
| Larceny-Theft                                | 0         | 0         | 0        | 0          | 0        | 0        | 0               | 0         | 0        |
| Simple Assault                               | 0         | 0         | 0        | 0          | 0        | 0        | 0               | 0         | 0        |
| Intimidation                                 | 0         | 1         | 0        | 0          | 0        | 0        | 0               | 0         | 0        |
| Destruction/Damage/Vandalism of Property     | 0         | 0         | 1        | 0          | 0        | 0        | 0               | 0         | 0        |
| <b>TOTAL</b>                                 | <b>0</b>  | <b>1</b>  | <b>1</b> | <b>0</b>   | <b>0</b> | <b>0</b> | <b>0</b>        | <b>0</b>  | <b>0</b> |
| <b>HATE CRIMES BY CATEGORIES</b>             |           |           |          |            |          |          |                 |           |          |
| Race   | 0         | 1         | 0        | 0          | 0        | 0        | 0               | 0         | 0        |
| Gender                                       | 0         | 0         | 0        | 0          | 0        | 0        | 0               | 0         | 0        |
| Gender Identity                              | 0         | 0         | 0        | 0          | 0        | 0        | 0               | 0         | 0        |
| Religion                                     | 0         | 0         | 0        | 0          | 0        | 0        | 0               | 0         | 0        |
| Sexual Orientation                           | 0         | 0         | 0        | 0          | 0        | 0        | 0               | 0         | 0        |
| Ethnicity                                    | 0         | 0         | 0        | 0          | 0        | 0        | 0               | 0         | 0        |
| National Origin                              | 0         | 0         | 1        | 0          | 0        | 0        | 0               | 0         | 0        |
| Disability                                   | 0         | 0         | 0        | 0          | 0        | 0        | 0               | 0         | 0        |
| <b>TOTAL</b>                                 | <b>0</b>  | <b>1</b>  | <b>1</b> | <b>0</b>   | <b>0</b> | <b>0</b> | <b>0</b>        | <b>0</b>  | <b>0</b> |
| <b>RELATIONSHIP VIOLENCE / VAWA OFFENSES</b> |           |           |          |            |          |          |                 |           |          |
| Domestic Violence                            | 7         | 5         | 5        | 0          | 0        | 0        | 1               | 1         | 1        |
| Dating Violence                              | 0         | 0         | 0        | 0          | 0        | 0        | 2               | 0         | 0        |
| Stalking                                     | 1         | 3         | 1        | 0          | 0        | 0        | 0               | 1         | 0        |
| <b>TOTAL</b>                                 | <b>8</b>  | <b>8</b>  | <b>6</b> | <b>0</b>   | <b>0</b> | <b>0</b> | <b>3</b>        | <b>2</b>  | <b>1</b> |

These crime statistics include reports from the students, staff, visitors, and those traversing the university area.

# HEALTH SCIENCES CENTER CAMPUS, CONTINUED

|                                | ON CAMPUS  |            |            | NON-CAMPUS |          |          | PUBLIC PROPERTY |           |           |
|--------------------------------|------------|------------|------------|------------|----------|----------|-----------------|-----------|-----------|
|                                | 2019       | 2018       | 2017       | 2019       | 2018     | 2017     | 2019            | 2018      | 2017      |
| <b>ALCOHOL, DRUGS, WEAPONS</b> |            |            |            |            |          |          |                 |           |           |
| Liquor Law Violation-Arrests   | 0          | 0          | 0          | 0          | 0        | 0        | 0               | 0         | 0         |
| Disciplinary Actions/Referrals | 0          | 0          | 0          | 0          | 0        | 0        | 0               | 0         | 0         |
| Drug Abuse Violations-Arrests  | 1          | 3          | 3          | 0          | 0        | 0        | 3               | 0         | 0         |
| Disciplinary Actions/Referrals | 0          | 0          | 0          | 0          | 0        | 0        | 0               | 0         | 0         |
| Weapons Possession/Arrests     | 0          | 0          | 2          | 0          | 0        | 0        | 0               | 0         | 0         |
| Disciplinary Actions/Referrals | 0          | 0          | 0          | 0          | 0        | 0        | 0               | 0         | 0         |
| <b>TOTAL</b>                   | <b>1</b>   | <b>3</b>   | <b>5</b>   | <b>0</b>   | <b>0</b> | <b>0</b> | <b>3</b>        | <b>0</b>  | <b>0</b>  |
| <b>NON-CLERY CRIMES</b>        |            |            |            |            |          |          |                 |           |           |
| Simple Assault                 | 14         | 13         | 7          | 0          | 0        | 0        | 7               | 2         | 8         |
| Harassment                     | 62         | 73         | 35         | 0          | 0        | 0        | 6               | 10        | 16        |
| Forgery                        | 0          | 0          | 0          | 0          | 0        | 0        | 0               | 0         | 0         |
| Fraud                          | 1          | 5          | 1          | 0          | 0        | 0        | 1               | 0         | 0         |
| Theft                          | 104        | 121        | 132        | 0          | 0        | 0        | 8               | 23        | 14        |
| Vandalism                      | 18         | 14         | 12         | 0          | 0        | 0        | 7               | 10        | 11        |
| Disorderly Conduct             | 17         | 8          | 4          | 0          | 0        | 0        | 4               | 4         | 0         |
| Embezzlement                   | 0          | 0          | 0          | 0          | 0        | 0        | 0               | 0         | 0         |
| Receiving Stolen Property      | 0          | 0          | 0          | 0          | 0        | 0        | 0               | 0         | 0         |
| Prostitution                   | 0          | 0          | 0          | 0          | 0        | 0        | 0               | 0         | 0         |
| Sex Assault (Other)            | 4          | 0          | 1          | 0          | 0        | 0        | 0               | 0         | 0         |
| Gambling                       | 0          | 0          | 0          | 0          | 0        | 0        | 0               | 0         | 0         |
| Offenses Against Family        | 0          | 0          | 0          | 0          | 0        | 0        | 0               | 0         | 0         |
| Driving Under Influence        | 0          | 0          | 0          | 0          | 0        | 0        | 2               | 5         | 6         |
| Drunkenness                    | 2          | 8          | 4          | 0          | 0        | 0        | 8               | 10        | 6         |
| Vagrancy                       | 0          | 0          | 0          | 0          | 0        | 0        | 0               | 0         | 0         |
| All Other Offenses             | 15         | 9          | 9          | 0          | 0        | 0        | 10              | 15        | 6         |
| <b>TOTAL</b>                   | <b>237</b> | <b>251</b> | <b>205</b> | <b>0</b>   | <b>0</b> | <b>0</b> | <b>53</b>       | <b>79</b> | <b>67</b> |

These crime statistics include reports from the students, staff, visitors, and those traversing the university area.



**Our team (from left to right): Allied Universal Bike Officer Karlin Lewis, Allied Universal Supervisor Shakeya Wanamaker, Police Officer Kathy Thomas, Corporal Mark Craney, Security Officer Francky Lombard, and Police Officer Lisandro Perez stand in front of the Parkinson Pavilion and are ready to provide quality service to our community.**



|  | ON CAMPUS |          |          | NON-CAMPUS |          |          | PUBLIC PROPERTY |          |          |
|--|-----------|----------|----------|------------|----------|----------|-----------------|----------|----------|
|  | 2019      | 2018     | 2017     | 2019       | 2018     | 2017     | 2019            | 2018     | 2017     |
| <b>CLERY CRIMES</b>                          |           |          |          |            |          |          |                 |          |          |
| Murder/Non-Negligent Manslaughter            | 0         | 0        | 0        | 0          | 0        | 0        | 0               | 0        | 0        |
| Manslaughter by Negligence                   | 0         | 0        | 0        | 0          | 0        | 0        | 0               | 0        | 0        |
| Sex Offenses: Rape                           | 0         | 0        | 0        | 0          | 0        | 0        | 0               | 0        | 0        |
| Sex Offenses: Fondling                       | 0         | 0        | 0        | 0          | 0        | 0        | 0               | 0        | 0        |
| Sex Offenses: Incest                         | 0         | 0        | 0        | 0          | 0        | 0        | 0               | 0        | 0        |
| Sex Offenses: Statutory Rape                 | 0         | 0        | 0        | 0          | 0        | 0        | 0               | 0        | 0        |
| Robbery                                      | 0         | 0        | 0        | 0          | 0        | 0        | 0               | 0        | 0        |
| Aggravated Assault                           | 0         | 0        | 0        | 0          | 0        | 0        | 0               | 0        | 0        |
| Burglary                                     | 0         | 0        | 0        | 0          | 0        | 0        | 0               | 0        | 0        |
| Motor Vehicle Theft                          | 0         | 0        | 0        | 0          | 0        | 0        | 0               | 0        | 0        |
| Arson  | 0         | 0        | 0        | 0          | 0        | 0        | 0               | 0        | 0        |
| <b>TOTAL</b>                                 | <b>0</b>  | <b>0</b> | <b>0</b> | <b>0</b>   | <b>0</b> | <b>0</b> | <b>0</b>        | <b>0</b> | <b>0</b> |
| <b>HATE CRIMES</b>                           |           |          |          |            |          |          |                 |          |          |
| Murder/Non-Negligent Manslaughter            | 0         | 0        | 0        | 0          | 0        | 0        | 0               | 0        | 0        |
| Manslaughter by Negligence                   | 0         | 0        | 0        | 0          | 0        | 0        | 0               | 0        | 0        |
| Sex Offenses: Rape                           | 0         | 0        | 0        | 0          | 0        | 0        | 0               | 0        | 0        |
| Sex Offenses: Fondling                       | 0         | 0        | 0        | 0          | 0        | 0        | 0               | 0        | 0        |
| Sex Offenses: Incest                         | 0         | 0        | 0        | 0          | 0        | 0        | 0               | 0        | 0        |
| Sex Offenses: Statutory Rape                 | 0         | 0        | 0        | 0          | 0        | 0        | 0               | 0        | 0        |
| Robbery                                      | 0         | 0        | 0        | 0          | 0        | 0        | 0               | 0        | 0        |
| Aggravated Assault                           | 0         | 0        | 0        | 0          | 0        | 0        | 0               | 0        | 0        |
| Burglary                                     | 0         | 0        | 0        | 0          | 0        | 0        | 0               | 0        | 0        |
| Motor Vehicle Theft                          | 0         | 0        | 0        | 0          | 0        | 0        | 0               | 0        | 0        |
| Arson  | 0         | 0        | 0        | 0          | 0        | 0        | 0               | 0        | 0        |
| Larceny-Theft                                | 0         | 0        | 0        | 0          | 0        | 0        | 0               | 0        | 0        |
| Simple Assault                               | 0         | 0        | 0        | 0          | 0        | 0        | 0               | 0        | 0        |
| Intimidation                                 | 0         | 0        | 0        | 0          | 0        | 0        | 0               | 0        | 0        |
| Destruction/Damage/Vandalism of Property     | 0         | 0        | 0        | 0          | 0        | 0        | 0               | 0        | 0        |
| <b>TOTAL</b>                                 | <b>0</b>  | <b>0</b> | <b>0</b> | <b>0</b>   | <b>0</b> | <b>0</b> | <b>0</b>        | <b>0</b> | <b>0</b> |
| <b>HATE CRIMES BY CATEGORIES</b>             |           |          |          |            |          |          |                 |          |          |
| Race   | 0         | 0        | 0        | 0          | 0        | 0        | 0               | 0        | 0        |
| Gender                                       | 0         | 0        | 0        | 0          | 0        | 0        | 0               | 0        | 0        |
| Gender Identity                              | 0         | 0        | 0        | 0          | 0        | 0        | 0               | 0        | 0        |
| Religion                                     | 0         | 0        | 0        | 0          | 0        | 0        | 0               | 0        | 0        |
| Sexual Orientation                           | 0         | 0        | 0        | 0          | 0        | 0        | 0               | 0        | 0        |
| Ethnicity                                    | 0         | 0        | 0        | 0          | 0        | 0        | 0               | 0        | 0        |
| National Origin                              | 0         | 0        | 0        | 0          | 0        | 0        | 0               | 0        | 0        |
| Disability                                   | 0         | 0        | 0        | 0          | 0        | 0        | 0               | 0        | 0        |
| <b>TOTAL</b>                                 | <b>0</b>  | <b>0</b> | <b>0</b> | <b>0</b>   | <b>0</b> | <b>0</b> | <b>0</b>        | <b>0</b> | <b>0</b> |
| <b>RELATIONSHIP VIOLENCE / VAWA OFFENSES</b> |           |          |          |            |          |          |                 |          |          |
| Domestic Violence                            | 0         | 0        | 0        | 0          | 0        | 0        | 0               | 0        | 0        |
| Dating Violence                              | 0         | 0        | 0        | 0          | 0        | 0        | 0               | 0        | 0        |
| Stalking                                     | 0         | 0        | 0        | 0          | 0        | 0        | 0               | 0        | 0        |
| <b>TOTAL</b>                                 | <b>0</b>  | <b>0</b> | <b>0</b> | <b>0</b>   | <b>0</b> | <b>0</b> | <b>0</b>        | <b>0</b> | <b>0</b> |

These crime statistics include reports from the students, staff, visitors, and those traversing the university area.

# AMBLER CAMPUS, CONTINUED

AMBLER INCLUDES FORT WASHINGTON STATISTICS

|                                | ON CAMPUS |          |          | NON-CAMPUS |          |          | PUBLIC PROPERTY |          |          |
|--------------------------------|-----------|----------|----------|------------|----------|----------|-----------------|----------|----------|
|                                | 2019      | 2018     | 2017     | 2019       | 2018     | 2017     | 2019            | 2018     | 2017     |
| <b>ALCOHOL, DRUGS, WEAPONS</b> |           |          |          |            |          |          |                 |          |          |
| Liquor Law Violation-Arrests   | 0         | 0        | 0        | 0          | 0        | 0        | 0               | 0        | 0        |
| Disciplinary Actions/Referrals | 0         | 0        | 0        | 0          | 0        | 0        | 0               | 0        | 0        |
| Drug Abuse Violations-Arrests  | 0         | 0        | 0        | 0          | 0        | 0        | 0               | 0        | 0        |
| Disciplinary Actions/Referrals | 0         | 0        | 0        | 0          | 0        | 0        | 0               | 0        | 0        |
| Weapons Possession/Arrests     | 0         | 0        | 0        | 0          | 0        | 0        | 0               | 0        | 0        |
| Disciplinary Actions/Referrals | 0         | 0        | 0        | 0          | 0        | 0        | 0               | 0        | 0        |
| <b>TOTAL</b>                   | <b>0</b>  | <b>0</b> | <b>0</b> | <b>0</b>   | <b>0</b> | <b>0</b> | <b>0</b>        | <b>0</b> | <b>0</b> |
| <b>NON-CLERY CRIMES</b>        |           |          |          |            |          |          |                 |          |          |
| Simple Assault                 | 0         | 1        | 0        | 0          | 0        | 0        | 0               | 0        | 0        |
| Harassment                     | 0         | 2        | 1        | 0          | 0        | 0        | 0               | 0        | 0        |
| Forgery                        | 0         | 0        | 0        | 0          | 0        | 0        | 0               | 0        | 0        |
| Fraud                          | 0         | 0        | 0        | 0          | 0        | 0        | 0               | 0        | 0        |
| Theft                          | 0         | 3        | 0        | 0          | 0        | 0        | 0               | 0        | 0        |
| Vandalism                      | 0         | 1        | 0        | 0          | 0        | 0        | 0               | 0        | 0        |
| Disorderly Conduct             | 0         | 0        | 0        | 0          | 0        | 0        | 0               | 0        | 0        |
| Embezzlement                   | 0         | 0        | 0        | 0          | 0        | 0        | 0               | 0        | 0        |
| Receiving Stolen Property      | 0         | 0        | 0        | 0          | 0        | 0        | 0               | 0        | 0        |
| Prostitution                   | 0         | 0        | 0        | 0          | 0        | 0        | 0               | 0        | 0        |
| Sex Assault (Other)            | 0         | 0        | 0        | 0          | 0        | 0        | 0               | 0        | 0        |
| Gambling                       | 0         | 0        | 0        | 0          | 0        | 0        | 0               | 0        | 0        |
| Offenses Against Family        | 0         | 0        | 0        | 0          | 0        | 0        | 0               | 0        | 0        |
| Driving Under Influence        | 0         | 0        | 0        | 0          | 0        | 0        | 0               | 0        | 0        |
| Drunkenness                    | 0         | 0        | 0        | 0          | 0        | 0        | 0               | 0        | 0        |
| Vagrancy                       | 0         | 0        | 0        | 0          | 0        | 0        | 0               | 0        | 0        |
| All Other Offenses             | 0         | 0        | 0        | 0          | 0        | 0        | 0               | 0        | 0        |
| <b>TOTAL</b>                   | <b>0</b>  | <b>7</b> | <b>1</b> | <b>0</b>   | <b>0</b> | <b>0</b> | <b>0</b>        | <b>0</b> | <b>0</b> |

These crime statistics include reports from the students, staff, visitors, and those traversing the university area.



While patrolling the Ambler campus, Police Officer Karen Brinkley converses with staff member.

# PODIATRY CAMPUS

|  | ON CAMPUS |          |          | RESIDENCE HALL † |          |          | NON-CAMPUS |          |          | PUBLIC PROPERTY |          |          |
|--|-----------|----------|----------|------------------|----------|----------|------------|----------|----------|-----------------|----------|----------|
|  | 2019      | 2018     | 2017     | 2019             | 2018     | 2017     | 2019       | 2018     | 2017     | 2019            | 2018     | 2017     |
| <b>CLERY CRIMES</b>                          |           |          |          |                  |          |          |            |          |          |                 |          |          |
| Murder/Non-Negligent Manslaughter            | 0         | 0        | 0        | 0                | 0        | 0        | 0          | 0        | 0        | 0               | 0        | 0        |
| Manslaughter by Negligence                   | 0         | 0        | 0        | 0                | 0        | 0        | 0          | 0        | 0        | 0               | 0        | 0        |
| Sex Offenses: Rape                           | 0         | 0        | 0        | 0                | 0        | 0        | 0          | 0        | 0        | 0               | 0        | 0        |
| Sex Offenses: Fondling                       | 0         | 0        | 0        | 0                | 0        | 0        | 0          | 0        | 0        | 0               | 0        | 0        |
| Sex Offenses: Incest                         | 0         | 0        | 0        | 0                | 0        | 0        | 0          | 0        | 0        | 0               | 0        | 0        |
| Sex Offenses: Statutory Rape                 | 0         | 0        | 0        | 0                | 0        | 0        | 0          | 0        | 0        | 0               | 0        | 0        |
| Robbery                                      | 0         | 0        | 0        | 0                | 0        | 0        | 0          | 0        | 0        | 0               | 0        | 0        |
| Aggravated Assault                           | 0         | 0        | 0        | 0                | 0        | 0        | 0          | 0        | 0        | 0               | 0        | 0        |
| Burglary                                     | 1         | 0        | 0        | 0                | 0        | 0        | 0          | 0        | 0        | 0               | 0        | 0        |
| Motor Vehicle Theft                          | 0         | 0        | 0        | 0                | 0        | 0        | 0          | 0        | 0        | 0               | 0        | 0        |
| Arson  | 0         | 0        | 0        | 0                | 0        | 0        | 0          | 0        | 0        | 0               | 0        | 0        |
| <b>TOTAL</b>                                 | <b>1</b>  | <b>0</b> | <b>0</b> | <b>0</b>         | <b>0</b> | <b>0</b> | <b>0</b>   | <b>0</b> | <b>0</b> | <b>0</b>        | <b>0</b> | <b>0</b> |
| <b>HATE CRIMES</b>                           |           |          |          |                  |          |          |            |          |          |                 |          |          |
| Murder/Non-Negligent Manslaughter            | 0         | 0        | 0        | 0                | 0        | 0        | 0          | 0        | 0        | 0               | 0        | 0        |
| Manslaughter by Negligence                   | 0         | 0        | 0        | 0                | 0        | 0        | 0          | 0        | 0        | 0               | 0        | 0        |
| Sex Offenses: Rape                           | 0         | 0        | 0        | 0                | 0        | 0        | 0          | 0        | 0        | 0               | 0        | 0        |
| Sex Offenses: Fondling                       | 0         | 0        | 0        | 0                | 0        | 0        | 0          | 0        | 0        | 0               | 0        | 0        |
| Sex Offenses: Incest                         | 0         | 0        | 0        | 0                | 0        | 0        | 0          | 0        | 0        | 0               | 0        | 0        |
| Sex Offenses: Statutory Rape                 | 0         | 0        | 0        | 0                | 0        | 0        | 0          | 0        | 0        | 0               | 0        | 0        |
| Robbery                                      | 0         | 0        | 0        | 0                | 0        | 0        | 0          | 0        | 0        | 0               | 0        | 0        |
| Aggravated Assault                           | 0         | 0        | 0        | 0                | 0        | 0        | 0          | 0        | 0        | 0               | 0        | 0        |
| Burglary                                     | 0         | 0        | 0        | 0                | 0        | 0        | 0          | 0        | 0        | 0               | 0        | 0        |
| Motor Vehicle Theft                          | 0         | 0        | 0        | 0                | 0        | 0        | 0          | 0        | 0        | 0               | 0        | 0        |
| Arson  | 0         | 0        | 0        | 0                | 0        | 0        | 0          | 0        | 0        | 0               | 0        | 0        |
| Larceny-Theft                                | 0         | 0        | 0        | 0                | 0        | 0        | 0          | 0        | 0        | 0               | 0        | 0        |
| Simple Assault                               | 0         | 0        | 0        | 0                | 0        | 0        | 0          | 0        | 0        | 0               | 0        | 0        |
| Intimidation                                 | 0         | 0        | 0        | 0                | 0        | 0        | 0          | 0        | 0        | 0               | 0        | 0        |
| Destruction/Damage/Vandalism of Property     | 0         | 0        | 0        | 0                | 0        | 0        | 0          | 0        | 0        | 0               | 0        | 0        |
| <b>TOTAL</b>                                 | <b>0</b>  | <b>0</b> | <b>0</b> | <b>0</b>         | <b>0</b> | <b>0</b> | <b>0</b>   | <b>0</b> | <b>0</b> | <b>0</b>        | <b>0</b> | <b>0</b> |
| <b>HATE CRIMES BY CATEGORIES</b>             |           |          |          |                  |          |          |            |          |          |                 |          |          |
| Race   | 0         | 0        | 0        | 0                | 0        | 0        | 0          | 0        | 0        | 0               | 0        | 0        |
| Gender                                       | 0         | 0        | 0        | 0                | 0        | 0        | 0          | 0        | 0        | 0               | 0        | 0        |
| Gender Identity                              | 0         | 0        | 0        | 0                | 0        | 0        | 0          | 0        | 0        | 0               | 0        | 0        |
| Religion                                     | 0         | 0        | 0        | 0                | 0        | 0        | 0          | 0        | 0        | 0               | 0        | 0        |
| Sexual Orientation                           | 0         | 0        | 0        | 0                | 0        | 0        | 0          | 0        | 0        | 0               | 0        | 0        |
| Ethnicity                                    | 0         | 0        | 0        | 0                | 0        | 0        | 0          | 0        | 0        | 0               | 0        | 0        |
| National Origin                              | 0         | 0        | 0        | 0                | 0        | 0        | 0          | 0        | 0        | 0               | 0        | 0        |
| Disability                                   | 0         | 0        | 0        | 0                | 0        | 0        | 0          | 0        | 0        | 0               | 0        | 0        |
| <b>TOTAL</b>                                 | <b>0</b>  | <b>0</b> | <b>0</b> | <b>0</b>         | <b>0</b> | <b>0</b> | <b>0</b>   | <b>0</b> | <b>0</b> | <b>0</b>        | <b>0</b> | <b>0</b> |
| <b>RELATIONSHIP VIOLENCE / VAWA OFFENSES</b> |           |          |          |                  |          |          |            |          |          |                 |          |          |
| Domestic Violence                            | 0         | 0        | 1        | 0                | 0        | 0        | 0          | 0        | 0        | 0               | 0        | 0        |
| Dating Violence                              | 0         | 1        | 0        | 0                | 1        | 0        | 0          | 0        | 0        | 0               | 0        | 0        |
| Stalking                                     | 0         | 0        | 0        | 0                | 0        | 0        | 0          | 0        | 0        | 0               | 0        | 0        |
| <b>TOTAL</b>                                 | <b>0</b>  | <b>1</b> | <b>1</b> | <b>0</b>         | <b>1</b> | <b>0</b> | <b>0</b>   | <b>0</b> | <b>0</b> | <b>0</b>        | <b>0</b> | <b>0</b> |

† Crimes reported in the "Residence Hall" columns are also accounted for in the "On-Campus" column.

These crime statistics include reports from the students, staff, visitors, and those traversing the university area.



# PODIATRY CAMPUS, CONTINUED

|                                | ON CAMPUS |          |          | RESIDENCE HALL † |          |          | NON-CAMPUS |          |          | PUBLIC PROPERTY |          |          |
|--------------------------------|-----------|----------|----------|------------------|----------|----------|------------|----------|----------|-----------------|----------|----------|
|                                | 2019      | 2018     | 2017     | 2019             | 2018     | 2017     | 2019       | 2018     | 2017     | 2019            | 2018     | 2017     |
| <b>ALCOHOL, DRUGS, WEAPONS</b> |           |          |          |                  |          |          |            |          |          |                 |          |          |
| Liquor Law Violation-Arrests   | 0         | 0        | 0        | 0                | 0        | 0        | 0          | 0        | 0        | 0               | 0        | 0        |
| Disciplinary Actions/Referrals | 0         | 0        | 0        | 0                | 0        | 0        | 0          | 0        | 0        | 0               | 0        | 0        |
| Drug Abuse Violations-Arrests  | 0         | 0        | 0        | 0                | 0        | 0        | 0          | 0        | 0        | 0               | 0        | 0        |
| Disciplinary Actions/Referrals | 0         | 0        | 0        | 0                | 0        | 0        | 0          | 0        | 0        | 0               | 0        | 0        |
| Weapons Possession/Arrests     | 0         | 0        | 0        | 0                | 0        | 0        | 0          | 0        | 0        | 0               | 0        | 0        |
| Disciplinary Actions/Referrals | 0         | 0        | 0        | 0                | 0        | 0        | 0          | 0        | 0        | 0               | 0        | 0        |
| <b>TOTAL</b>                   | <b>0</b>  | <b>0</b> | <b>0</b> | <b>0</b>         | <b>0</b> | <b>0</b> | <b>0</b>   | <b>0</b> | <b>0</b> | <b>0</b>        | <b>0</b> | <b>0</b> |
| <b>NON-CLERY CRIMES</b>        |           |          |          |                  |          |          |            |          |          |                 |          |          |
| Simple Assault                 | 0         | 0        | 0        | 0                | 0        | 0        | 0          | 0        | 0        | 0               | 0        | 0        |
| Harassment                     | 2         | 2        | 2        | 0                | 2        | 0        | 0          | 0        | 0        | 0               | 0        | 0        |
| Forgery                        | 0         | 0        | 0        | 0                | 0        | 0        | 0          | 0        | 0        | 0               | 0        | 0        |
| Fraud                          | 0         | 1        | 1        | 0                | 1        | 1        | 0          | 0        | 0        | 0               | 0        | 0        |
| Theft                          | 2         | 0        | 1        | 0                | 0        | 0        | 0          | 0        | 0        | 0               | 0        | 0        |
| Vandalism                      | 0         | 0        | 0        | 0                | 0        | 0        | 0          | 0        | 0        | 0               | 0        | 0        |
| Disorderly Conduct             | 0         | 0        | 0        | 0                | 0        | 0        | 0          | 0        | 0        | 0               | 0        | 0        |
| Embezzlement                   | 0         | 0        | 0        | 0                | 0        | 0        | 0          | 0        | 0        | 0               | 0        | 0        |
| Receiving Stolen Property      | 0         | 0        | 0        | 0                | 0        | 0        | 0          | 0        | 0        | 0               | 0        | 0        |
| Prostitution                   | 0         | 0        | 0        | 0                | 0        | 0        | 0          | 0        | 0        | 0               | 0        | 0        |
| Sex Assault (Other)            | 0         | 0        | 0        | 0                | 0        | 0        | 0          | 0        | 0        | 0               | 0        | 0        |
| Gambling                       | 0         | 0        | 0        | 0                | 0        | 0        | 0          | 0        | 0        | 0               | 0        | 0        |
| Offenses Against Family        | 0         | 0        | 0        | 0                | 0        | 0        | 0          | 0        | 0        | 0               | 0        | 0        |
| Driving Under Influence        | 0         | 0        | 0        | 0                | 0        | 0        | 0          | 0        | 0        | 0               | 0        | 0        |
| Drunkenness                    | 0         | 0        | 0        | 0                | 0        | 0        | 0          | 0        | 0        | 0               | 0        | 0        |
| Vagrancy                       | 0         | 0        | 0        | 0                | 0        | 0        | 0          | 0        | 0        | 0               | 0        | 0        |
| All Other Offenses             | 0         | 0        | 0        | 0                | 0        | 0        | 0          | 0        | 0        | 0               | 0        | 0        |
| <b>TOTAL</b>                   | <b>4</b>  | <b>3</b> | <b>4</b> | <b>0</b>         | <b>3</b> | <b>1</b> | <b>0</b>   | <b>0</b> | <b>0</b> | <b>0</b>        | <b>0</b> | <b>0</b> |

† Crimes reported in the "Residence Hall" columns are also accounted for in the "On-Campus" column.

These crime statistics include reports from the students, staff, visitors, and those traversing the university area.



The School of Podiatric Medicine is located at 8th and Race Streets in downtown Philadelphia.

# HARRISBURG CAMPUS

|  | ON CAMPUS |          |          | NON-CAMPUS |          |          | PUBLIC PROPERTY |          |          |
|--|-----------|----------|----------|------------|----------|----------|-----------------|----------|----------|
|  | 2019      | 2018     | 2017     | 2019       | 2018     | 2017     | 2019            | 2018     | 2017     |
| <b>CLERY CRIMES</b>                          |           |          |          |            |          |          |                 |          |          |
| Murder/Non-Negligent Manslaughter            | 0         | 0        | 0        | 0          | 0        | 0        | 0               | 0        | 0        |
| Manslaughter by Negligence                   | 0         | 0        | 0        | 0          | 0        | 0        | 0               | 0        | 0        |
| Sex Offenses: Rape                           | 0         | 0        | 0        | 0          | 0        | 0        | 0               | 0        | 0        |
| Sex Offenses: Fondling                       | 0         | 0        | 0        | 0          | 0        | 0        | 0               | 0        | 0        |
| Sex Offenses: Incest                         | 0         | 0        | 0        | 0          | 0        | 0        | 0               | 0        | 0        |
| Sex Offenses: Statutory Rape                 | 0         | 0        | 0        | 0          | 0        | 0        | 0               | 0        | 0        |
| Robbery                                      | 0         | 0        | 0        | 0          | 0        | 0        | 0               | 0        | 0        |
| Aggravated Assault                           | 0         | 0        | 0        | 0          | 0        | 0        | 0               | 0        | 0        |
| Burglary                                     | 0         | 0        | 0        | 0          | 0        | 0        | 0               | 0        | 0        |
| Motor Vehicle Theft                          | 0         | 0        | 0        | 0          | 0        | 0        | 0               | 0        | 0        |
| Arson  | 0         | 0        | 0        | 0          | 0        | 0        | 0               | 0        | 0        |
| <b>TOTAL</b>                                 | <b>0</b>  | <b>0</b> | <b>0</b> | <b>0</b>   | <b>0</b> | <b>0</b> | <b>0</b>        | <b>0</b> | <b>0</b> |
| <b>HATE CRIMES</b>                           |           |          |          |            |          |          |                 |          |          |
| Murder/Non-Negligent Manslaughter            | 0         | 0        | 0        | 0          | 0        | 0        | 0               | 0        | 0        |
| Manslaughter by Negligence                   | 0         | 0        | 0        | 0          | 0        | 0        | 0               | 0        | 0        |
| Sex Offenses: Rape                           | 0         | 0        | 0        | 0          | 0        | 0        | 0               | 0        | 0        |
| Sex Offenses: Fondling                       | 0         | 0        | 0        | 0          | 0        | 0        | 0               | 0        | 0        |
| Sex Offenses: Incest                         | 0         | 0        | 0        | 0          | 0        | 0        | 0               | 0        | 0        |
| Sex Offenses: Statutory Rape                 | 0         | 0        | 0        | 0          | 0        | 0        | 0               | 0        | 0        |
| Robbery                                      | 0         | 0        | 0        | 0          | 0        | 0        | 0               | 0        | 0        |
| Aggravated Assault                           | 0         | 0        | 0        | 0          | 0        | 0        | 0               | 0        | 0        |
| Burglary                                     | 0         | 0        | 0        | 0          | 0        | 0        | 0               | 0        | 0        |
| Motor Vehicle Theft                          | 0         | 0        | 0        | 0          | 0        | 0        | 0               | 0        | 0        |
| Arson  | 0         | 0        | 0        | 0          | 0        | 0        | 0               | 0        | 0        |
| Larceny-Theft                                | 0         | 0        | 0        | 0          | 0        | 0        | 0               | 0        | 0        |
| Simple Assault                               | 0         | 0        | 0        | 0          | 0        | 0        | 0               | 0        | 0        |
| Intimidation                                 | 0         | 0        | 0        | 0          | 0        | 0        | 0               | 0        | 0        |
| Destruction/Damage/Vandalism of Property     | 0         | 0        | 0        | 0          | 0        | 0        | 0               | 0        | 0        |
| <b>TOTAL</b>                                 | <b>0</b>  | <b>0</b> | <b>0</b> | <b>0</b>   | <b>0</b> | <b>0</b> | <b>0</b>        | <b>0</b> | <b>0</b> |
| <b>HATE CRIMES BY CATEGORIES</b>             |           |          |          |            |          |          |                 |          |          |
| Race   | 0         | 0        | 0        | 0          | 0        | 0        | 0               | 0        | 0        |
| Gender                                       | 0         | 0        | 0        | 0          | 0        | 0        | 0               | 0        | 0        |
| Gender Identity                              | 0         | 0        | 0        | 0          | 0        | 0        | 0               | 0        | 0        |
| Religion                                     | 0         | 0        | 0        | 0          | 0        | 0        | 0               | 0        | 0        |
| Sexual Orientation                           | 0         | 0        | 0        | 0          | 0        | 0        | 0               | 0        | 0        |
| Ethnicity                                    | 0         | 0        | 0        | 0          | 0        | 0        | 0               | 0        | 0        |
| National Origin                              | 0         | 0        | 0        | 0          | 0        | 0        | 0               | 0        | 0        |
| Disability                                   | 0         | 0        | 0        | 0          | 0        | 0        | 0               | 0        | 0        |
| <b>TOTAL</b>                                 | <b>0</b>  | <b>0</b> | <b>0</b> | <b>0</b>   | <b>0</b> | <b>0</b> | <b>0</b>        | <b>0</b> | <b>0</b> |
| <b>RELATIONSHIP VIOLENCE / VAWA OFFENSES</b> |           |          |          |            |          |          |                 |          |          |
| Domestic Violence                            | 0         | 0        | 0        | 0          | 0        | 0        | 0               | 0        | 0        |
| Dating Violence                              | 0         | 0        | 0        | 0          | 0        | 0        | 0               | 0        | 0        |
| Stalking                                     | 0         | 0        | 0        | 0          | 0        | 0        | 0               | 0        | 0        |
| <b>TOTAL</b>                                 | <b>0</b>  | <b>0</b> | <b>0</b> | <b>0</b>   | <b>0</b> | <b>0</b> | <b>0</b>        | <b>0</b> | <b>0</b> |

These crime statistics include reports from the students, staff, visitors, and those traversing the university area.

# HARRISBURG CAMPUS, CONTINUED

|                                | ON CAMPUS |          |          | NON-CAMPUS |          |          | PUBLIC PROPERTY |          |          |
|--------------------------------|-----------|----------|----------|------------|----------|----------|-----------------|----------|----------|
|                                | 2019      | 2018     | 2017     | 2019       | 2018     | 2017     | 2019            | 2018     | 2017     |
| <b>ALCOHOL, DRUGS, WEAPONS</b> |           |          |          |            |          |          |                 |          |          |
| Liquor Law Violation-Arrests   | 0         | 0        | 0        | 0          | 0        | 0        | 0               | 0        | 0        |
| Disciplinary Actions/Referrals | 0         | 0        | 0        | 0          | 0        | 0        | 0               | 0        | 0        |
| Drug Abuse Violations-Arrests  | 0         | 0        | 0        | 0          | 0        | 0        | 0               | 0        | 0        |
| Disciplinary Actions/Referrals | 0         | 0        | 0        | 0          | 0        | 0        | 0               | 0        | 0        |
| Weapons Possession/Arrests     | 0         | 0        | 0        | 0          | 0        | 0        | 0               | 0        | 0        |
| Disciplinary Actions/Referrals | 0         | 0        | 0        | 0          | 0        | 0        | 0               | 0        | 0        |
| <b>TOTAL</b>                   | <b>0</b>  | <b>0</b> | <b>0</b> | <b>0</b>   | <b>0</b> | <b>0</b> | <b>0</b>        | <b>0</b> | <b>0</b> |
| <b>NON-CLERY CRIMES</b>        |           |          |          |            |          |          |                 |          |          |
| Simple Assault                 | 0         | 0        | 0        | 0          | 0        | 0        | 0               | 0        | 0        |
| Harassment                     | 0         | 0        | 0        | 0          | 0        | 0        | 0               | 0        | 0        |
| Forgery                        | 0         | 0        | 0        | 0          | 0        | 0        | 0               | 0        | 0        |
| Fraud                          | 0         | 0        | 0        | 0          | 0        | 0        | 0               | 0        | 0        |
| Theft                          | 0         | 0        | 0        | 0          | 0        | 0        | 0               | 0        | 0        |
| Vandalism                      | 0         | 0        | 0        | 0          | 0        | 0        | 0               | 0        | 0        |
| Disorderly Conduct             | 0         | 0        | 0        | 0          | 0        | 0        | 0               | 0        | 0        |
| Embezzlement                   | 0         | 0        | 0        | 0          | 0        | 0        | 0               | 0        | 0        |
| Receiving Stolen Property      | 0         | 0        | 0        | 0          | 0        | 0        | 0               | 0        | 0        |
| Prostitution                   | 0         | 0        | 0        | 0          | 0        | 0        | 0               | 0        | 0        |
| Sex Assault (Other)            | 0         | 0        | 0        | 0          | 0        | 0        | 0               | 0        | 0        |
| Gambling                       | 0         | 0        | 0        | 0          | 0        | 0        | 0               | 0        | 0        |
| Offenses Against Family        | 0         | 0        | 0        | 0          | 0        | 0        | 0               | 0        | 0        |
| Driving Under Influence        | 0         | 0        | 0        | 0          | 0        | 0        | 0               | 0        | 0        |
| Drunkenness                    | 0         | 0        | 0        | 0          | 0        | 0        | 0               | 0        | 0        |
| Vagrancy                       | 0         | 0        | 0        | 0          | 0        | 0        | 0               | 0        | 0        |
| All Other Offenses             | 0         | 0        | 0        | 0          | 0        | 0        | 0               | 0        | 0        |
| <b>TOTAL</b>                   | <b>0</b>  | <b>0</b> | <b>0</b> | <b>0</b>   | <b>0</b> | <b>0</b> | <b>0</b>        | <b>0</b> | <b>0</b> |

These crime statistics include reports from the students, staff, visitors, and those traversing the university area.



Students walk to class at the Harrisburg campus.



# CENTER CITY CAMPUS

|  | ON CAMPUS |          |          | NON-CAMPUS |          |          | PUBLIC PROPERTY |          |          |
|--|-----------|----------|----------|------------|----------|----------|-----------------|----------|----------|
|  | 2019      | 2018     | 2017     | 2019       | 2018     | 2017     | 2019            | 2018     | 2017     |
| <b>CLERY CRIMES</b>                          |           |          |          |            |          |          |                 |          |          |
| Murder/Non-Negligent Manslaughter            | 0         | 0        | 0        | 0          | 0        | 0        | 0               | 0        | 0        |
| Manslaughter by Negligence                   | 0         | 0        | 0        | 0          | 0        | 0        | 0               | 0        | 0        |
| Sex Offenses: Rape                           | 0         | 0        | 0        | 0          | 0        | 0        | 0               | 0        | 0        |
| Sex Offenses: Fondling                       | 0         | 0        | 0        | 0          | 0        | 0        | 0               | 0        | 0        |
| Sex Offenses: Incest                         | 0         | 0        | 0        | 0          | 0        | 0        | 0               | 0        | 0        |
| Sex Offenses: Statutory Rape                 | 0         | 0        | 0        | 0          | 0        | 0        | 0               | 0        | 0        |
| Robbery                                      | 0         | 0        | 0        | 0          | 0        | 0        | 0               | 0        | 0        |
| Aggravated Assault                           | 0         | 0        | 0        | 0          | 0        | 0        | 0               | 1        | 0        |
| Burglary                                     | 0         | 0        | 0        | 0          | 0        | 0        | 0               | 0        | 0        |
| Motor Vehicle Theft                          | 0         | 0        | 0        | 0          | 0        | 0        | 0               | 0        | 0        |
| Arson  | 0         | 0        | 0        | 0          | 0        | 0        | 0               | 0        | 0        |
| <b>TOTAL</b>                                 | <b>0</b>  | <b>0</b> | <b>0</b> | <b>0</b>   | <b>0</b> | <b>0</b> | <b>0</b>        | <b>1</b> | <b>0</b> |
| <b>HATE CRIMES</b>                           |           |          |          |            |          |          |                 |          |          |
| Murder/Non-Negligent Manslaughter            | 0         | 0        | 0        | 0          | 0        | 0        | 0               | 0        | 0        |
| Manslaughter by Negligence                   | 0         | 0        | 0        | 0          | 0        | 0        | 0               | 0        | 0        |
| Sex Offenses: Rape                           | 0         | 0        | 0        | 0          | 0        | 0        | 0               | 0        | 0        |
| Sex Offenses: Fondling                       | 0         | 0        | 0        | 0          | 0        | 0        | 0               | 0        | 0        |
| Sex Offenses: Incest                         | 0         | 0        | 0        | 0          | 0        | 0        | 0               | 0        | 0        |
| Sex Offenses: Statutory Rape                 | 0         | 0        | 0        | 0          | 0        | 0        | 0               | 0        | 0        |
| Robbery                                      | 0         | 0        | 0        | 0          | 0        | 0        | 0               | 0        | 0        |
| Aggravated Assault                           | 0         | 0        | 0        | 0          | 0        | 0        | 0               | 0        | 0        |
| Burglary                                     | 0         | 0        | 0        | 0          | 0        | 0        | 0               | 0        | 0        |
| Motor Vehicle Theft                          | 0         | 0        | 0        | 0          | 0        | 0        | 0               | 0        | 0        |
| Arson  | 0         | 0        | 0        | 0          | 0        | 0        | 0               | 0        | 0        |
| Larceny-Theft                                | 0         | 0        | 0        | 0          | 0        | 0        | 0               | 0        | 0        |
| Simple Assault                               | 0         | 0        | 0        | 0          | 0        | 0        | 0               | 0        | 0        |
| Intimidation                                 | 0         | 0        | 0        | 0          | 0        | 0        | 0               | 0        | 0        |
| Destruction/Damage/Vandalism of Property     | 0         | 0        | 0        | 0          | 0        | 0        | 0               | 0        | 0        |
| <b>TOTAL</b>                                 | <b>0</b>  | <b>0</b> | <b>0</b> | <b>0</b>   | <b>0</b> | <b>0</b> | <b>0</b>        | <b>0</b> | <b>0</b> |
| <b>HATE CRIMES BY CATEGORIES</b>             |           |          |          |            |          |          |                 |          |          |
| Race   | 0         | 0        | 0        | 0          | 0        | 0        | 0               | 0        | 0        |
| Gender                                       | 0         | 0        | 0        | 0          | 0        | 0        | 0               | 0        | 0        |
| Gender Identity                              | 0         | 0        | 0        | 0          | 0        | 0        | 0               | 0        | 0        |
| Religion                                     | 0         | 0        | 0        | 0          | 0        | 0        | 0               | 0        | 0        |
| Sexual Orientation                           | 0         | 0        | 0        | 0          | 0        | 0        | 0               | 0        | 0        |
| Ethnicity                                    | 0         | 0        | 0        | 0          | 0        | 0        | 0               | 0        | 0        |
| National Origin                              | 0         | 0        | 0        | 0          | 0        | 0        | 0               | 0        | 0        |
| Disability                                   | 0         | 0        | 0        | 0          | 0        | 0        | 0               | 0        | 0        |
| <b>TOTAL</b>                                 | <b>0</b>  | <b>0</b> | <b>0</b> | <b>0</b>   | <b>0</b> | <b>0</b> | <b>0</b>        | <b>0</b> | <b>0</b> |
| <b>RELATIONSHIP VIOLENCE / VAWA OFFENSES</b> |           |          |          |            |          |          |                 |          |          |
| Domestic Violence                            | 0         | 0        | 0        | 0          | 0        | 0        | 0               | 0        | 0        |
| Dating Violence                              | 0         | 0        | 0        | 0          | 0        | 0        | 0               | 0        | 0        |
| Stalking                                     | 0         | 0        | 0        | 0          | 0        | 0        | 0               | 0        | 0        |
| <b>TOTAL</b>                                 | <b>0</b>  | <b>0</b> | <b>0</b> | <b>0</b>   | <b>0</b> | <b>0</b> | <b>0</b>        | <b>0</b> | <b>0</b> |

These crime statistics include reports from the students, staff, visitors, and those traversing the university area.

# CENTER CITY CAMPUS, CONTINUED

|                                | ON CAMPUS |          |          | NON-CAMPUS |          |          | PUBLIC PROPERTY |          |          |
|--------------------------------|-----------|----------|----------|------------|----------|----------|-----------------|----------|----------|
|                                | 2019      | 2018     | 2017     | 2019       | 2018     | 2017     | 2019            | 2018     | 2017     |
| <b>ALCOHOL, DRUGS, WEAPONS</b> |           |          |          |            |          |          |                 |          |          |
| Liquor Law Violation-Arrests   | 0         | 0        | 0        | 0          | 0        | 0        | 0               | 0        | 0        |
| Disciplinary Actions/Referrals | 0         | 0        | 0        | 0          | 0        | 0        | 0               | 0        | 0        |
| Drug Abuse Violations-Arrests  | 0         | 0        | 0        | 0          | 0        | 0        | 0               | 0        | 0        |
| Disciplinary Actions/Referrals | 0         | 0        | 0        | 0          | 0        | 0        | 0               | 0        | 0        |
| Weapons Possession/Arrests     | 0         | 0        | 0        | 0          | 0        | 0        | 0               | 0        | 0        |
| Disciplinary Actions/Referrals | 0         | 0        | 0        | 0          | 0        | 0        | 0               | 0        | 0        |
| <b>TOTAL</b>                   | <b>0</b>  | <b>0</b> | <b>0</b> | <b>0</b>   | <b>0</b> | <b>0</b> | <b>0</b>        | <b>0</b> | <b>0</b> |
| <b>NON-CLERY CRIMES</b>        |           |          |          |            |          |          |                 |          |          |
| Simple Assault                 | 0         | 0        | 0        | 0          | 0        | 0        | 0               | 0        | 0        |
| Harassment                     | 1         | 0        | 0        | 0          | 0        | 0        | 0               | 0        | 0        |
| Forgery                        | 0         | 0        | 0        | 0          | 0        | 0        | 0               | 0        | 0        |
| Fraud                          | 0         | 0        | 0        | 0          | 0        | 0        | 0               | 0        | 0        |
| Theft                          | 1         | 0        | 1        | 0          | 0        | 0        | 0               | 2        | 3        |
| Vandalism                      | 0         | 0        | 0        | 0          | 0        | 0        | 0               | 1        | 0        |
| Disorderly Conduct             | 0         | 0        | 0        | 0          | 0        | 0        | 0               | 0        | 0        |
| Embezzlement                   | 0         | 0        | 0        | 0          | 0        | 0        | 0               | 0        | 0        |
| Receiving Stolen Property      | 0         | 0        | 0        | 0          | 0        | 0        | 0               | 0        | 0        |
| Prostitution                   | 0         | 0        | 0        | 0          | 0        | 0        | 0               | 0        | 0        |
| Sex Assault (Other)            | 0         | 0        | 0        | 0          | 0        | 0        | 0               | 0        | 0        |
| Gambling                       | 0         | 0        | 0        | 0          | 0        | 0        | 0               | 0        | 0        |
| Offenses Against Family        | 0         | 0        | 0        | 0          | 0        | 0        | 0               | 0        | 0        |
| Driving Under Influence        | 0         | 0        | 0        | 0          | 0        | 0        | 0               | 0        | 0        |
| Drunkenness                    | 1         | 0        | 0        | 0          | 0        | 0        | 0               | 0        | 0        |
| Vagrancy                       | 0         | 0        | 0        | 0          | 0        | 0        | 0               | 0        | 0        |
| All Other Offenses             | 0         | 0        | 0        | 0          | 0        | 0        | 0               | 0        | 0        |
| <b>TOTAL</b>                   | <b>3</b>  | <b>0</b> | <b>1</b> | <b>0</b>   | <b>0</b> | <b>0</b> | <b>0</b>        | <b>3</b> | <b>3</b> |

These crime statistics include reports from the students, staff, visitors, and those traversing the university area.



Whether walking or riding, Temple's Center City location is easily accessible.

# JAPAN CAMPUS

|  | ON CAMPUS |          |          | RESIDENCE HALL † |          |          | NON-CAMPUS |          |          | PUBLIC PROPERTY |          |          |
|--|-----------|----------|----------|------------------|----------|----------|------------|----------|----------|-----------------|----------|----------|
|  | 2019      | 2018     | 2017     | 2019             | 2018     | 2017     | 2019       | 2018     | 2017     | 2019            | 2018     | 2017     |
| <b>CLERY CRIMES</b>                          |           |          |          |                  |          |          |            |          |          |                 |          |          |
| Murder/Non-Negligent Manslaughter            | 0         | 0        | 0        | 0                | 0        | 0        | 0          | 0        | 0        | 0               | 0        | 0        |
| Manslaughter by Negligence                   | 0         | 0        | 0        | 0                | 0        | 0        | 0          | 0        | 0        | 0               | 0        | 0        |
| Sex Offenses: Rape                           | 0         | 0        | 0        | 0                | 0        | 0        | 1          | 0        | 0        | 0               | 0        | 0        |
| Sex Offenses: Fondling                       | 0         | 0        | 0        | 0                | 0        | 0        | 0          | 0        | 0        | 0               | 0        | 0        |
| Sex Offenses: Incest                         | 0         | 0        | 0        | 0                | 0        | 0        | 0          | 0        | 0        | 0               | 0        | 0        |
| Sex Offenses: Statutory Rape                 | 0         | 0        | 0        | 0                | 0        | 0        | 0          | 0        | 0        | 0               | 0        | 0        |
| Robbery                                      | 0         | 0        | 0        | 0                | 0        | 0        | 0          | 0        | 0        | 0               | 0        | 0        |
| Aggravated Assault                           | 0         | 0        | 0        | 0                | 0        | 0        | 0          | 0        | 0        | 0               | 0        | 0        |
| Burglary                                     | 0         | 0        | 0        | 0                | 0        | 0        | 0          | 0        | 0        | 0               | 0        | 0        |
| Motor Vehicle Theft                          | 0         | 0        | 0        | 0                | 0        | 0        | 0          | 0        | 0        | 0               | 0        | 0        |
| Arson  | 0         | 0        | 0        | 0                | 0        | 0        | 0          | 0        | 0        | 0               | 0        | 0        |
| <b>TOTAL</b>                                 | <b>0</b>  | <b>0</b> | <b>0</b> | <b>0</b>         | <b>0</b> | <b>0</b> | <b>1</b>   | <b>0</b> | <b>0</b> | <b>0</b>        | <b>0</b> | <b>0</b> |
| <b>HATE CRIMES</b>                           |           |          |          |                  |          |          |            |          |          |                 |          |          |
| Murder/Non-Negligent Manslaughter            | 0         | 0        | 0        | 0                | 0        | 0        | 0          | 0        | 0        | 0               | 0        | 0        |
| Manslaughter by Negligence                   | 0         | 0        | 0        | 0                | 0        | 0        | 0          | 0        | 0        | 0               | 0        | 0        |
| Sex Offenses: Rape                           | 0         | 0        | 0        | 0                | 0        | 0        | 0          | 0        | 0        | 0               | 0        | 0        |
| Sex Offenses: Fondling                       | 0         | 0        | 0        | 0                | 0        | 0        | 0          | 0        | 0        | 0               | 0        | 0        |
| Sex Offenses: Incest                         | 0         | 0        | 0        | 0                | 0        | 0        | 0          | 0        | 0        | 0               | 0        | 0        |
| Sex Offenses: Statutory Rape                 | 0         | 0        | 0        | 0                | 0        | 0        | 0          | 0        | 0        | 0               | 0        | 0        |
| Robbery                                      | 0         | 0        | 0        | 0                | 0        | 0        | 0          | 0        | 0        | 0               | 0        | 0        |
| Aggravated Assault                           | 0         | 0        | 0        | 0                | 0        | 0        | 0          | 0        | 0        | 0               | 0        | 0        |
| Burglary                                     | 0         | 0        | 0        | 0                | 0        | 0        | 0          | 0        | 0        | 0               | 0        | 0        |
| Motor Vehicle Theft                          | 0         | 0        | 0        | 0                | 0        | 0        | 0          | 0        | 0        | 0               | 0        | 0        |
| Arson  | 0         | 0        | 0        | 0                | 0        | 0        | 0          | 0        | 0        | 0               | 0        | 0        |
| Larceny-Theft                                | 0         | 0        | 0        | 0                | 0        | 0        | 0          | 0        | 0        | 0               | 0        | 0        |
| Simple Assault                               | 0         | 0        | 0        | 0                | 0        | 0        | 0          | 0        | 0        | 0               | 0        | 0        |
| Intimidation                                 | 0         | 0        | 0        | 0                | 0        | 0        | 0          | 0        | 0        | 0               | 0        | 0        |
| Destruction/Damage/Vandalism of Property     | 0         | 0        | 0        | 0                | 0        | 0        | 0          | 0        | 0        | 0               | 0        | 0        |
| <b>TOTAL</b>                                 | <b>0</b>  | <b>0</b> | <b>0</b> | <b>0</b>         | <b>0</b> | <b>0</b> | <b>0</b>   | <b>0</b> | <b>0</b> | <b>0</b>        | <b>0</b> | <b>0</b> |
| <b>HATE CRIMES BY CATEGORIES</b>             |           |          |          |                  |          |          |            |          |          |                 |          |          |
| Race   | 0         | 0        | 0        | 0                | 0        | 0        | 0          | 0        | 0        | 0               | 0        | 0        |
| Gender                                       | 0         | 0        | 0        | 0                | 0        | 0        | 0          | 0        | 0        | 0               | 0        | 0        |
| Gender Identity                              | 0         | 0        | 0        | 0                | 0        | 0        | 0          | 0        | 0        | 0               | 0        | 0        |
| Religion                                     | 0         | 0        | 0        | 0                | 0        | 0        | 0          | 0        | 0        | 0               | 0        | 0        |
| Sexual Orientation                           | 0         | 0        | 0        | 0                | 0        | 0        | 0          | 0        | 0        | 0               | 0        | 0        |
| Ethnicity                                    | 0         | 0        | 0        | 0                | 0        | 0        | 0          | 0        | 0        | 0               | 0        | 0        |
| National Origin                              | 0         | 0        | 0        | 0                | 0        | 0        | 0          | 0        | 0        | 0               | 0        | 0        |
| Disability                                   | 0         | 0        | 0        | 0                | 0        | 0        | 0          | 0        | 0        | 0               | 0        | 0        |
| <b>TOTAL</b>                                 | <b>0</b>  | <b>0</b> | <b>0</b> | <b>0</b>         | <b>0</b> | <b>0</b> | <b>0</b>   | <b>0</b> | <b>0</b> | <b>0</b>        | <b>0</b> | <b>0</b> |
| <b>RELATIONSHIP VIOLENCE / VAWA OFFENSES</b> |           |          |          |                  |          |          |            |          |          |                 |          |          |
| Domestic Violence                            | 0         | 0        | 0        | 0                | 0        | 0        | 0          | 0        | 0        | 0               | 0        | 0        |
| Dating Violence                              | 0         | 0        | 0        | 0                | 0        | 0        | 0          | 0        | 0        | 0               | 0        | 0        |
| Stalking                                     | 0         | 0        | 0        | 0                | 0        | 0        | 0          | 0        | 0        | 0               | 0        | 0        |
| <b>TOTAL</b>                                 | <b>0</b>  | <b>0</b> | <b>0</b> | <b>0</b>         | <b>0</b> | <b>0</b> | <b>0</b>   | <b>0</b> | <b>0</b> | <b>0</b>        | <b>0</b> | <b>0</b> |

† Crimes reported in the "Residence Hall" columns are also accounted for in the "On-Campus" column.  
 These crime statistics include reports from the students, staff, visitors, and those traversing the university area.



# JAPAN CAMPUS, CONTINUED

|                                | ON CAMPUS |          |          | RESIDENCE HALL ♦ |          |          | NON-CAMPUS |          |          | PUBLIC PROPERTY |          |          |
|--------------------------------|-----------|----------|----------|------------------|----------|----------|------------|----------|----------|-----------------|----------|----------|
|                                | 2019      | 2018     | 2017     | 2019             | 2018     | 2017     | 2019       | 2018     | 2017     | 2019            | 2018     | 2017     |
| <b>ALCOHOL, DRUGS, WEAPONS</b> |           |          |          |                  |          |          |            |          |          |                 |          |          |
| Liquor Law Violation-Arrests   | 0         | 0        | 0        | 0                | 0        | 0        | 0          | 0        | 0        | 0               | 0        | 0        |
| Disciplinary Actions/Referrals | 0         | 0        | 0        | 0                | 0        | 0        | 0          | 3        | 0        | 0               | 0        | 0        |
| Drug Abuse Violations-Arrests  | 0         | 0        | 0        | 0                | 0        | 0        | 0          | 0        | 0        | 0               | 0        | 0        |
| Disciplinary Actions/Referrals | 0         | 3        | 0        | 0                | 0        | 0        | 0          | 0        | 0        | 0               | 0        | 0        |
| Weapons Possession-Arrests     | 0         | 0        | 0        | 0                | 0        | 0        | 0          | 0        | 0        | 0               | 0        | 0        |
| Disciplinary Actions/Referrals | 0         | 0        | 0        | 0                | 0        | 0        | 0          | 0        | 0        | 0               | 0        | 0        |
| <b>TOTAL</b>                   | <b>0</b>  | <b>3</b> | <b>0</b> | <b>0</b>         | <b>0</b> | <b>0</b> | <b>0</b>   | <b>3</b> | <b>0</b> | <b>0</b>        | <b>0</b> | <b>0</b> |
| <b>NON-CLERY CRIMES</b>        |           |          |          |                  |          |          |            |          |          |                 |          |          |
| Simple Assault                 | 0         | 0        | 0        | 0                | 0        | 0        | 0          | 0        | 0        | 0               | 0        | 0        |
| Harassment                     | 0         | 1        | 0        | 0                | 1        | 0        | 1          | 0        | 0        | 0               | 0        | 0        |
| Forgery                        | 0         | 0        | 0        | 0                | 0        | 0        | 0          | 0        | 0        | 0               | 0        | 0        |
| Fraud                          | 0         | 0        | 0        | 0                | 0        | 0        | 0          | 0        | 0        | 0               | 0        | 0        |
| Theft                          | 0         | 0        | 0        | 0                | 0        | 0        | 0          | 0        | 0        | 0               | 0        | 0        |
| Vandalism                      | 0         | 0        | 0        | 0                | 0        | 0        | 0          | 0        | 0        | 0               | 0        | 0        |
| Disorderly Conduct             | 0         | 0        | 0        | 0                | 0        | 0        | 0          | 0        | 0        | 0               | 0        | 0        |
| Embezzlement                   | 0         | 0        | 0        | 0                | 0        | 0        | 0          | 0        | 0        | 0               | 0        | 0        |
| Receiving Stolen Property      | 0         | 0        | 0        | 0                | 0        | 0        | 0          | 0        | 0        | 0               | 0        | 0        |
| Prostitution                   | 0         | 0        | 0        | 0                | 0        | 0        | 0          | 0        | 0        | 0               | 0        | 0        |
| Sex Assault (Other)            | 0         | 0        | 0        | 0                | 0        | 0        | 0          | 0        | 0        | 0               | 0        | 0        |
| Gambling                       | 0         | 0        | 0        | 0                | 0        | 0        | 0          | 0        | 0        | 0               | 0        | 0        |
| Offenses Against Family        | 0         | 0        | 0        | 0                | 0        | 0        | 0          | 0        | 0        | 0               | 0        | 0        |
| Driving Under Influence        | 0         | 0        | 0        | 0                | 0        | 0        | 0          | 0        | 0        | 0               | 0        | 0        |
| Drunkenness                    | 0         | 0        | 0        | 0                | 0        | 0        | 0          | 0        | 0        | 0               | 0        | 0        |
| Vagrancy                       | 0         | 0        | 0        | 0                | 0        | 0        | 0          | 0        | 0        | 0               | 0        | 0        |
| All Other Offenses             | 0         | 0        | 0        | 0                | 0        | 0        | 0          | 0        | 0        | 0               | 0        | 0        |
| <b>TOTAL</b>                   | <b>0</b>  | <b>1</b> | <b>0</b> | <b>0</b>         | <b>1</b> | <b>0</b> | <b>1</b>   | <b>0</b> | <b>0</b> | <b>0</b>        | <b>0</b> | <b>0</b> |

♦ Crimes reported in the "Residence Hall" columns are also accounted for in the "On-Campus" column.

These crime statistics include reports from the students, staff, visitors, and those traversing the university area.



Students enjoy the night life in Japan.

# ROME CAMPUS

|  | ON CAMPUS |          |          | RESIDENCE HALL ✦ |          |          | NON-CAMPUS |          |          | PUBLIC PROPERTY |          |          |
|--|-----------|----------|----------|------------------|----------|----------|------------|----------|----------|-----------------|----------|----------|
|  | 2019      | 2018     | 2017     | 2019             | 2018     | 2017     | 2019       | 2018     | 2017     | 2019            | 2018     | 2017     |
| <b>CLERY CRIMES</b>                          |           |          |          |                  |          |          |            |          |          |                 |          |          |
| Murder/Non-Negligent Manslaughter            | 0         | 0        | 0        | 0                | 0        | 0        | 0          | 0        | 0        | 0               | 0        | 0        |
| Manslaughter by Negligence                   | 0         | 0        | 0        | 0                | 0        | 0        | 0          | 0        | 0        | 0               | 0        | 0        |
| Sex Offenses: Rape                           | 0         | 0        | 0        | 0                | 0        | 0        | 0          | 0        | 0        | 0               | 0        | 0        |
| Sex Offenses: Fondling                       | 1         | 0        | 0        | 1                | 0        | 0        | 0          | 0        | 0        | 0               | 0        | 0        |
| Sex Offenses: Incest                         | 0         | 0        | 0        | 0                | 0        | 0        | 0          | 0        | 0        | 0               | 0        | 0        |
| Sex Offenses: Statutory Rape                 | 0         | 0        | 0        | 0                | 0        | 0        | 0          | 0        | 0        | 0               | 0        | 0        |
| Robbery                                      | 0         | 0        | 0        | 0                | 0        | 0        | 0          | 0        | 0        | 0               | 0        | 0        |
| Aggravated Assault                           | 0         | 0        | 0        | 0                | 0        | 0        | 0          | 0        | 0        | 0               | 0        | 0        |
| Burglary                                     | 0         | 1        | 0        | 0                | 1        | 0        | 0          | 0        | 0        | 0               | 0        | 0        |
| Motor Vehicle Theft                          | 0         | 0        | 0        | 0                | 0        | 0        | 0          | 0        | 0        | 0               | 0        | 0        |
| Arson  | 0         | 0        | 0        | 0                | 0        | 0        | 0          | 0        | 0        | 0               | 0        | 0        |
| <b>TOTAL</b>                                 | <b>1</b>  | <b>1</b> | <b>0</b> | <b>1</b>         | <b>1</b> | <b>0</b> | <b>0</b>   | <b>0</b> | <b>0</b> | <b>0</b>        | <b>0</b> | <b>0</b> |
| <b>HATE CRIMES</b>                           |           |          |          |                  |          |          |            |          |          |                 |          |          |
| Murder/Non-Negligent Manslaughter            | 0         | 0        | 0        | 0                | 0        | 0        | 0          | 0        | 0        | 0               | 0        | 0        |
| Manslaughter by Negligence                   | 0         | 0        | 0        | 0                | 0        | 0        | 0          | 0        | 0        | 0               | 0        | 0        |
| Sex Offenses: Rape                           | 0         | 0        | 0        | 0                | 0        | 0        | 0          | 0        | 0        | 0               | 0        | 0        |
| Sex Offenses: Fondling                       | 0         | 0        | 0        | 0                | 0        | 0        | 0          | 0        | 0        | 0               | 0        | 0        |
| Sex Offenses: Incest                         | 0         | 0        | 0        | 0                | 0        | 0        | 0          | 0        | 0        | 0               | 0        | 0        |
| Sex Offenses: Statutory Rape                 | 0         | 0        | 0        | 0                | 0        | 0        | 0          | 0        | 0        | 0               | 0        | 0        |
| Robbery                                      | 0         | 0        | 0        | 0                | 0        | 0        | 0          | 0        | 0        | 0               | 0        | 0        |
| Aggravated Assault                           | 0         | 0        | 0        | 0                | 0        | 0        | 0          | 0        | 0        | 0               | 0        | 0        |
| Burglary                                     | 0         | 0        | 0        | 0                | 0        | 0        | 0          | 0        | 0        | 0               | 0        | 0        |
| Motor Vehicle Theft                          | 0         | 0        | 0        | 0                | 0        | 0        | 0          | 0        | 0        | 0               | 0        | 0        |
| Arson  | 0         | 0        | 0        | 0                | 0        | 0        | 0          | 0        | 0        | 0               | 0        | 0        |
| Larceny-Theft                                | 0         | 0        | 0        | 0                | 0        | 0        | 0          | 0        | 0        | 0               | 0        | 0        |
| Simple Assault                               | 0         | 0        | 0        | 0                | 0        | 0        | 0          | 0        | 0        | 0               | 0        | 0        |
| Intimidation                                 | 0         | 0        | 0        | 0                | 0        | 0        | 0          | 0        | 0        | 0               | 0        | 0        |
| Destruction/Damage/Vandalism of Property     | 0         | 0        | 0        | 0                | 0        | 0        | 0          | 0        | 0        | 0               | 0        | 0        |
| <b>TOTAL</b>                                 | <b>0</b>  | <b>0</b> | <b>0</b> | <b>0</b>         | <b>0</b> | <b>0</b> | <b>0</b>   | <b>0</b> | <b>0</b> | <b>0</b>        | <b>0</b> | <b>0</b> |
| <b>HATE CRIMES BY CATEGORIES</b>             |           |          |          |                  |          |          |            |          |          |                 |          |          |
| Race   | 0         | 0        | 0        | 0                | 0        | 0        | 0          | 0        | 0        | 0               | 0        | 0        |
| Gender                                       | 0         | 0        | 0        | 0                | 0        | 0        | 0          | 0        | 0        | 0               | 0        | 0        |
| Gender Identity                              | 0         | 0        | 0        | 0                | 0        | 0        | 0          | 0        | 0        | 0               | 0        | 0        |
| Religion                                     | 0         | 0        | 0        | 0                | 0        | 0        | 0          | 0        | 0        | 0               | 0        | 0        |
| Sexual Orientation                           | 0         | 0        | 0        | 0                | 0        | 0        | 0          | 0        | 0        | 0               | 0        | 0        |
| Ethnicity                                    | 0         | 0        | 0        | 0                | 0        | 0        | 0          | 0        | 0        | 0               | 0        | 0        |
| National Origin                              | 0         | 0        | 0        | 0                | 0        | 0        | 0          | 0        | 0        | 0               | 0        | 0        |
| Disability                                   | 0         | 0        | 0        | 0                | 0        | 0        | 0          | 0        | 0        | 0               | 0        | 0        |
| <b>TOTAL</b>                                 | <b>0</b>  | <b>0</b> | <b>0</b> | <b>0</b>         | <b>0</b> | <b>0</b> | <b>0</b>   | <b>0</b> | <b>0</b> | <b>0</b>        | <b>0</b> | <b>0</b> |
| <b>RELATIONSHIP VIOLENCE / VAWA OFFENSES</b> |           |          |          |                  |          |          |            |          |          |                 |          |          |
| Domestic Violence                            | 0         | 0        | 0        | 0                | 0        | 0        | 0          | 0        | 0        | 0               | 0        | 0        |
| Dating Violence                              | 0         | 0        | 0        | 0                | 0        | 0        | 0          | 0        | 0        | 0               | 0        | 0        |
| Stalking                                     | 0         | 0        | 0        | 0                | 0        | 0        | 0          | 0        | 0        | 0               | 0        | 0        |
| <b>TOTAL</b>                                 | <b>0</b>  | <b>0</b> | <b>0</b> | <b>0</b>         | <b>0</b> | <b>0</b> | <b>0</b>   | <b>0</b> | <b>0</b> | <b>0</b>        | <b>0</b> | <b>0</b> |

These crime statistics include reports from the students, staff, visitors, and those traversing the university area.

# ROME CAMPUS, CONTINUED

|                                | ON CAMPUS |          |          | RESIDENCE HALL ✦ |          |          | NON-CAMPUS |          |          | PUBLIC PROPERTY |          |          |
|--------------------------------|-----------|----------|----------|------------------|----------|----------|------------|----------|----------|-----------------|----------|----------|
|                                | 2019      | 2018     | 2017     | 2019             | 2018     | 2017     | 2019       | 2018     | 2017     | 2019            | 2018     | 2017     |
| <b>ALCOHOL, DRUGS, WEAPONS</b> |           |          |          |                  |          |          |            |          |          |                 |          |          |
| Liquor Law Violation-Arrests   | 0         | 0        | 0        | 0                | 0        | 0        | 0          | 0        | 0        | 0               | 0        | 0        |
| Disciplinary Actions/Referrals | 2         | 0        | 1        | 0                | 0        | 0        | 0          | 0        | 0        | 1               | 0        | 0        |
| Drug Abuse Violations-Arrests  | 0         | 0        | 0        | 0                | 0        | 0        | 0          | 0        | 0        | 0               | 0        | 0        |
| Disciplinary Actions/Referrals | 0         | 0        | 0        | 0                | 0        | 0        | 0          | 0        | 0        | 0               | 0        | 0        |
| Weapons Possession/Arrests     | 0         | 0        | 0        | 0                | 0        | 0        | 0          | 0        | 0        | 0               | 0        | 0        |
| Disciplinary Actions/Referrals | 0         | 0        | 0        | 0                | 0        | 0        | 0          | 0        | 0        | 0               | 0        | 0        |
| <b>TOTAL</b>                   | <b>2</b>  | <b>0</b> | <b>1</b> | <b>0</b>         | <b>0</b> | <b>0</b> | <b>0</b>   | <b>0</b> | <b>0</b> | <b>1</b>        | <b>0</b> | <b>0</b> |
| <b>NON-CLERY CRIMES</b>        |           |          |          |                  |          |          |            |          |          |                 |          |          |
| Simple Assault                 | 0         | 0        | 0        | 0                | 0        | 0        | 0          | 0        | 0        | 0               | 0        | 0        |
| Harassment                     | 0         | 0        | 0        | 0                | 0        | 0        | 0          | 0        | 0        | 0               | 0        | 0        |
| Forgery                        | 0         | 0        | 0        | 0                | 0        | 0        | 0          | 0        | 0        | 0               | 0        | 0        |
| Fraud                          | 0         | 0        | 0        | 0                | 0        | 0        | 0          | 0        | 0        | 0               | 0        | 0        |
| Theft                          | 0         | 0        | 0        | 0                | 0        | 0        | 0          | 0        | 0        | 0               | 0        | 0        |
| Vandalism                      | 0         | 0        | 0        | 0                | 0        | 0        | 0          | 0        | 0        | 0               | 0        | 0        |
| Disorderly Conduct             | 0         | 0        | 0        | 0                | 0        | 0        | 0          | 0        | 0        | 0               | 0        | 0        |
| Embezzlement                   | 0         | 0        | 0        | 0                | 0        | 0        | 0          | 0        | 0        | 0               | 0        | 0        |
| Receiving Stolen Property      | 0         | 0        | 0        | 0                | 0        | 0        | 0          | 0        | 0        | 0               | 0        | 0        |
| Prostitution                   | 0         | 0        | 0        | 0                | 0        | 0        | 0          | 0        | 0        | 0               | 0        | 0        |
| Sex Assault (Other)            | 0         | 0        | 0        | 0                | 0        | 0        | 0          | 0        | 0        | 0               | 0        | 0        |
| Gambling                       | 0         | 0        | 0        | 0                | 0        | 0        | 0          | 0        | 0        | 0               | 0        | 0        |
| Offenses Against Family        | 0         | 0        | 0        | 0                | 0        | 0        | 0          | 0        | 0        | 0               | 0        | 0        |
| Driving Under Influence        | 0         | 0        | 0        | 0                | 0        | 0        | 0          | 0        | 0        | 0               | 0        | 0        |
| Drunkenness                    | 0         | 0        | 0        | 0                | 0        | 0        | 0          | 0        | 0        | 0               | 0        | 0        |
| Vagrancy                       | 0         | 0        | 0        | 0                | 0        | 0        | 0          | 0        | 0        | 0               | 0        | 0        |
| All Other Offenses             | 0         | 0        | 0        | 0                | 0        | 0        | 0          | 0        | 0        | 0               | 0        | 0        |
| <b>TOTAL</b>                   | <b>0</b>  | <b>0</b> | <b>0</b> | <b>0</b>         | <b>0</b> | <b>0</b> | <b>0</b>   | <b>0</b> | <b>0</b> | <b>0</b>        | <b>0</b> | <b>0</b> |

These crime statistics include reports from the students, staff, visitors, and those traversing the university area.

**When in Rome, do as the Owls do—go out and explore.**





# PENNSYLVANIA UNIFORM CRIME STATISTICS

FOR 2019, 2018, AND 2017

## MAIN Campus

|                  | Murder & Non-Negligent Manslaughter | Manslaughter by Negligence | Rape | Fondling | Incest | Statutory Rape | Robbery | Aggravated Assault | Burglary | Theft | Motor Vehicle Theft | Arson | FULL TIME EQUIVALENT |
|------------------|-------------------------------------|----------------------------|------|----------|--------|----------------|---------|--------------------|----------|-------|---------------------|-------|----------------------|
| 2019 TOTAL       | 0                                   | 0                          | 5    | 13       | 0      | 0              | 28      | 13                 | 9        | 275   | 9                   | 0     | 37,896               |
| 2019 CRIME INDEX | 0.0                                 | 0.0                        | 13.2 | 34.3     | 0.0    | 0.0            | 73.9    | 34.3               | 23.7     | 725.7 | 23.7                | 0.0   |                      |
| 2018 TOTAL       | 0                                   | 0                          | 11   | 17       | 0      | 0              | 19      | 5                  | 13       | 308   | 5                   | 0     | 36,961               |
| 2018 CRIME INDEX | 0.0                                 | 0.0                        | 29.8 | 46.0     | 0.0    | 0.0            | 51.4    | 13.5               | 35.2     | 833.3 | 13.5                | 0.0   |                      |
| 2017 TOTAL       | 0                                   | 0                          | 14   | 20       | 0      | 0              | 18      | 14                 | 29       | 268   | 8                   | 1     | 37,295               |
| 2017 CRIME INDEX | 0.0                                 | 0.0                        | 37.5 | 53.6     | 0.0    | 0.0            | 48.3    | 37.5               | 77.8     | 718.6 | 21.5                | 2.7   |                      |

## HEALTH SCIENCES CENTER Campus

|                  | Murder & Non-Negligent Manslaughter | Manslaughter by Negligence | Rape | Fondling | Incest | Statutory Rape | Robbery | Aggravated Assault | Burglary | Theft  | Motor Vehicle Theft | Arson | FULL TIME EQUIVALENT |
|------------------|-------------------------------------|----------------------------|------|----------|--------|----------------|---------|--------------------|----------|--------|---------------------|-------|----------------------|
| 2019 TOTAL       | 1                                   | 0                          | 0    | 1        | 0      | 0              | 6       | 7                  | 0        | 112    | 2                   | 0     | 8,897                |
| 2019 CRIME INDEX | 11.2                                | 0.0                        | 0.0  | 11.2     | 0.0    | 0.0            | 67.4    | 78.7               | 0.0      | 1258.8 | 22.5                | 0.0   |                      |
| 2018 TOTAL       | 0                                   | 0                          | 0    | 2        | 0      | 0              | 7       | 15                 | 3        | 144    | 3                   | 0     | 9,143                |
| 2018 CRIME INDEX | 0.0                                 | 0.0                        | 0.0  | 21.9     | 0.0    | 0.0            | 76.6    | 164.1              | 32.8     | 1575.0 | 32.8                | 0.0   |                      |
| 2017 TOTAL       | 0                                   | 0                          | 0    | 0        | 0      | 0              | 2       | 5                  | 7        | 146    | 2                   | 1     | 9,240                |
| 2017 CRIME INDEX | 0.0                                 | 0.0                        | 0.0  | 0.0      | 0.0    | 0.0            | 21.6    | 54.1               | 75.8     | 1580.1 | 21.6                | 10.8  |                      |

## AMBLER Campus

|                  | Murder & Non-Negligent Manslaughter | Manslaughter by Negligence | Rape | Fondling | Incest | Statutory Rape | Robbery | Aggravated Assault | Burglary | Theft | Motor Vehicle Theft | Arson | FULL TIME EQUIVALENT |
|------------------|-------------------------------------|----------------------------|------|----------|--------|----------------|---------|--------------------|----------|-------|---------------------|-------|----------------------|
| 2019 TOTAL       | 0                                   | 0                          | 0    | 0        | 0      | 0              | 0       | 0                  | 0        | 0     | 0                   | 0     | 277                  |
| 2019 CRIME INDEX | 0.0                                 | 0.0                        | 0.0  | 0.0      | 0.0    | 0.0            | 0.0     | 0.0                | 0.0      | 0.0   | 0.0                 | 0.0   |                      |
| 2018 TOTAL       | 0                                   | 0                          | 0    | 0        | 0      | 0              | 0       | 0                  | 0        | 3     | 0                   | 0     | 306                  |
| 2018 CRIME INDEX | 0.0                                 | 0.0                        | 0.0  | 0.0      | 0.0    | 0.0            | 0.0     | 0.0                | 0.0      | 980.4 | 0.0                 | 0.0   |                      |
| 2017 TOTAL       | 0                                   | 0                          | 0    | 0        | 0      | 0              | 0       | 0                  | 0        | 0     | 0                   | 0     | 360                  |
| 2017 CRIME INDEX | 0.0                                 | 0.0                        | 0.0  | 0.0      | 0.0    | 0.0            | 0.0     | 0.0                | 0.0      | 0.0   | 0.0                 | 0.0   |                      |

# PENNSYLVANIA UNIFORM CRIME STATISTICS, CONTINUED

FOR 2019, 2018, AND 2017

## PODIATRY Campus

|                  | Murder & Non-Negligent Manslaughter | Manslaughter by Negligence | Rape | Fondling | Incest | Statutory Rape | Robbery | Aggravated Assault | Burglary | Theft | Motor Vehicle Theft | Arson | FULL TIME EQUIVALENT |
|------------------|-------------------------------------|----------------------------|------|----------|--------|----------------|---------|--------------------|----------|-------|---------------------|-------|----------------------|
| 2019 TOTAL       | 0                                   | 0                          | 0    | 0        | 0      | 0              | 0       | 0                  | 1        | 2     | 0                   | 0     | 439                  |
| 2019 CRIME INDEX | 0.0                                 | 0.0                        | 0.0  | 0.0      | 0.0    | 0.0            | 0.0     | 0.0                | 228.0    | 455.6 | 0.0                 | 0.0   |                      |
| 2018 TOTAL       | 0                                   | 0                          | 0    | 0        | 0      | 0              | 0       | 0                  | 0        | 0     | 0                   | 0     | 450                  |
| 2018 CRIME INDEX | 0.0                                 | 0.0                        | 0.0  | 0.0      | 0.0    | 0.0            | 0.0     | 0.0                | 0.0      | 0.0   | 0.0                 | 0.0   |                      |
| 2017 TOTAL       | 0                                   | 0                          | 0    | 0        | 0      | 0              | 0       | 0                  | 0        | 1     | 0                   | 0     | 454                  |
| 2017 CRIME INDEX | 0.0                                 | 0.0                        | 0.0  | 0.0      | 0.0    | 0.0            | 0.0     | 0.0                | 0.0      | 220.3 | 0.0                 | 0.0   |                      |

## HARRISBURG Campus

|                  | Murder & Non-Negligent Manslaughter | Manslaughter by Negligence | Rape | Fondling | Incest | Statutory Rape | Robbery | Aggravated Assault | Burglary | Theft | Motor Vehicle Theft | Arson | FULL TIME EQUIVALENT |
|------------------|-------------------------------------|----------------------------|------|----------|--------|----------------|---------|--------------------|----------|-------|---------------------|-------|----------------------|
| 2019 TOTAL       | 0                                   | 0                          | 0    | 0        | 0      | 0              | 0       | 0                  | 0        | 0     | 0                   | 0     | 67                   |
| 2019 CRIME INDEX | 0.0                                 | 0.0                        | 0.0  | 0.0      | 0.0    | 0.0            | 0.0     | 0.0                | 0.0      | 0.0   | 0.0                 | 0.0   |                      |
| 2018 TOTAL       | 0                                   | 0                          | 0    | 0        | 0      | 0              | 0       | 0                  | 0        | 0     | 0                   | 0     | 71                   |
| 2018 CRIME INDEX | 0.0                                 | 0.0                        | 0.0  | 0.0      | 0.0    | 0.0            | 0.0     | 0.0                | 0.0      | 0.0   | 0.0                 | 0.0   |                      |
| 2017 TOTAL       | 0                                   | 0                          | 0    | 0        | 0      | 0              | 0       | 0                  | 0        | 0     | 0                   | 0     | 103                  |
| 2017 CRIME INDEX | 0.0                                 | 0.0                        | 0.0  | 0.0      | 0.0    | 0.0            | 0.0     | 0.0                | 0.0      | 0.0   | 0.0                 | 0.0   |                      |

## CENTER CITY Campus

|                  | Murder & Non-Negligent Manslaughter | Manslaughter by Negligence | Rape | Fondling | Incest | Statutory Rape | Robbery | Aggravated Assault | Burglary | Theft | Motor Vehicle Theft | Arson | FULL TIME EQUIVALENT |
|------------------|-------------------------------------|----------------------------|------|----------|--------|----------------|---------|--------------------|----------|-------|---------------------|-------|----------------------|
| 2019 TOTAL       | 0                                   | 0                          | 0    | 0        | 0      | 0              | 0       | 0                  | 0        | 1     | 0                   | 0     | 798                  |
| 2019 CRIME INDEX | 0.0                                 | 0.0                        | 0.0  | 0.0      | 0.0    | 0.0            | 0.0     | 0.0                | 0.0      | 125.3 | 0.0                 | 0.0   |                      |
| 2018 TOTAL       | 0                                   | 0                          | 0    | 0        | 0      | 0              | 0       | 1                  | 0        | 2     | 0                   | 0     | 979                  |
| 2018 CRIME INDEX | 0.0                                 | 0.0                        | 0.0  | 0.0      | 0.0    | 0.0            | 0.0     | 102.1              | 0.0      | 204.3 | 0.0                 | 0.0   |                      |
| 2017 TOTAL       | 0                                   | 0                          | 0    | 0        | 0      | 0              | 0       | 0                  | 0        | 4     | 0                   | 0     | 1,090                |
| 2017 CRIME INDEX | 0.0                                 | 0.0                        | 0.0  | 0.0      | 0.0    | 0.0            | 0.0     | 0.0                | 0.0      | 367.1 | 0.0                 | 0.0   |                      |

# PENNSYLVANIA UNIFORM CRIME STATISTICS, CONTINUED

FOR 2019, 2018, AND 2017

## JAPAN Campus

|                  | Murder & Non-Negligent Manslaughter | Manslaughter by Negligence | Rape | Fondling | Incest | Statutory Rape | Robbery | Aggravated Assault | Burglary | Theft | Motor Vehicle Theft | Arson | FULL TIME EQUIVALENT |
|------------------|-------------------------------------|----------------------------|------|----------|--------|----------------|---------|--------------------|----------|-------|---------------------|-------|----------------------|
| 2019 TOTAL       | 0                                   | 0                          | 1    | 0        | 0      | 0              | 0       | 0                  | 0        | 0     | 0                   | 0     | 1,218                |
| 2019 CRIME INDEX | 0.0                                 | 0.0                        | 82.1 | 0.0      | 0.0    | 0.0            | 0.0     | 0.0                | 0.0      | 0.0   | 0.0                 | 0.0   |                      |
| 2018 TOTAL       | 0                                   | 0                          | 0    | 0        | 0      | 0              | 0       | 0                  | 0        | 0     | 0                   | 0     | 1,124                |
| 2018 CRIME INDEX | 0.0                                 | 0.0                        | 0.0  | 0.0      | 0.0    | 0.0            | 0.0     | 0.0                | 0.0      | 0.0   | 0.0                 | 0.0   |                      |
| 2017 TOTAL       | 0                                   | 0                          | 0    | 0        | 0      | 0              | 0       | 0                  | 0        | 0     | 0                   | 0     | 1,146                |
| 2017 CRIME INDEX | 0.0                                 | 0.0                        | 0.0  | 0.0      | 0.0    | 0.0            | 0.0     | 0.0                | 0.0      | 0.0   | 0.0                 | 0.0   |                      |

## ROME Campus

|                  | Murder & Non-Negligent Manslaughter | Manslaughter by Negligence | Rape | Fondling | Incest | Statutory Rape | Robbery | Aggravated Assault | Burglary | Theft | Motor Vehicle Theft | Arson | FULL TIME EQUIVALENT |
|------------------|-------------------------------------|----------------------------|------|----------|--------|----------------|---------|--------------------|----------|-------|---------------------|-------|----------------------|
| 2019 TOTAL       | 0                                   | 0                          | 0    | 1        | 0      | 0              | 0       | 0                  | 0        | 0     | 0                   | 0     | 136                  |
| 2019 CRIME INDEX | 0.0                                 | 0.0                        | 0.0  | 733.7    | 0.0    | 0.0            | 0.0     | 0.0                | 0.0      | 0.0   | 0.0                 | 0.0   |                      |
| 2018 TOTAL       | 0                                   | 0                          | 0    | 0        | 0      | 0              | 0       | 0                  | 1        | 0     | 0                   | 0     | 171                  |
| 2018 CRIME INDEX | 0.0                                 | 0.0                        | 0.0  | 0.0      | 0.0    | 0.0            | 0.0     | 0.0                | 584.8    | 0.0   | 0.0                 | 0.0   |                      |
| 2017 TOTAL       | 0                                   | 0                          | 0    | 0        | 0      | 0              | 0       | 0                  | 0        | 0     | 0                   | 0     | 166                  |
| 2017 CRIME INDEX | 0.0                                 | 0.0                        | 0.0  | 0.0      | 0.0    | 0.0            | 0.0     | 0.0                | 0.0      | 0.0   | 0.0                 | 0.0   |                      |



Temple University and Philadelphia: where Owls soar!



# IMPORTANT CONTACT INFORMATION

| DEPARTMENT  | PHONE          |
|---|----------------|
| Campus Police                                     | (215) 204-1234 |
| Dean of Students Office                           | (215) 204-7188 |
| Title IX Coordinator                              | (215) 204-3283 |
| Office of Equal Opportunity Compliance            | (215) 204-6772 |
| Fire Marshal's Office                             | (215) 204-7938 |
| Office of Student Conduct and Community Standards | (215) 204-3286 |
| Student Health Services                           | (215) 204-7500 |
| Temple Information Line                           | (215) 204-1975 |
| Temple Police Investigation Unit                  | (215) 204-7178 |
| Tuttleman Counseling Services                     | (215) 204-7276 |
| Wellness Resource Center                          | (215) 204-8436 |

