

ASIDES

2021/22 SEASON

ISSUE 1

 SHAKESPEARE
THEATRE COMPANY



ONCE UPON A
ONE MORE
TIME



DURING THE PERFORMANCE



Masks stay on



Silence your phone

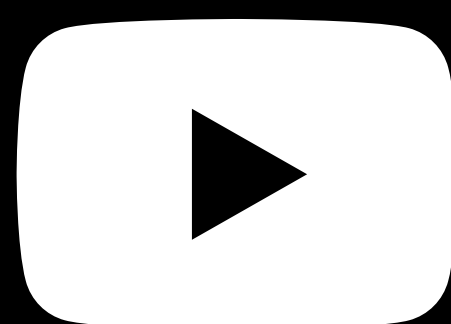


No photography or video

WELCOME TO *ASIDES!*

Whether you're an experienced user of our digital programs or brand new, we're excited to share this new format with you.

Click on the video link below to learn more.



ASIDES

Production Program and Publication of the
SHAKESPEARE THEATRE COMPANY

Interim Managing Editor
Neal Racioppo

Graphic Designer
Daniel Martin-Minnich

Contributing Editors
Dr. Drew Lichtenberg
Cristina Lopez

Publisher
Neal Racioppo



FROM THE ARTISTIC DIRECTOR



DEAR FRIEND,

Welcome to the official start of our 36th season. At STC we present the biggest stories with the biggest artists. It's a proud moment for us to share this audacious retelling of classical stories by an American icon. It was Ms. Spears' idea to create this show about the power of fairytale princesses and I hope you enjoy the immediacy of this production. Like Shakespeare taking old stories and making them new, this show continues our glorious tradition of reworking the classics for now.

PHOTO OF SIMON GODWIN BY KK OTTESEN.



I'm thrilled to introduce Keone and Mari Madrid and their amazing creative team and cast to you. They have built a truly uplifting show; and I am deeply indebted to Jimmy Nederlander and the Nederlander Organization for partnering with STC on this special journey.

After flying high with this amazing extravangaza, please join us for more this season, including the beloved *Our Town* and Shakespeare's glorious comedy, *Much Ado About Nothing*.

Here's to happily ever after,

Simon Godwin

Artistic Director

Shakespeare Theatre Company

TABLE OF CONTENTS

4	From the Artistic Director
8	Audience Services
11	<i>NEW!</i> Concessions/Gifts
12	Title Pages
24	About Britney Spears
28	About Keone and Mari Madrid
31	About STC
33	Not That Innocent by Dr. Drew Lichtenberg, Resident Dramaturg
42	Cast Biographies
61	Artistic Biographies
74	Epilogue
78	Up Next: <i>Our Town</i>
80	For Shakespeare Theatre Company
88	Support
108	Staff



Q:

Although princesses and Disney go hand-in-hand, what non-princess Disney institution did Britney Spears get her start with?

Find the answer on the last page!



AUDIENCE SERVICES

Sidney Harman Hall
610 F Street NW

Michael R. Klein Theatre at the Lansburgh
450 7th Street NW

Tickets: 202.547.1122

Box Office phone hours (both theatres):
Daily, noon–6 p.m.

Box Office window open until curtain time.

The Michael R. Klein Theatre is
currently closed.

Concessions and Gift Kiosks:
Food and beverages are available
beginning one hour before performances
and at intermission. Pre-order concessions
before curtain to avoid lines at
intermission. The gift kiosks are open
before curtain, at intermission, and for a
short time after each performance.



Accessibility



Our theatres are accessible to all patrons. Please request special seating at time of ticket purchase and arrive 30 minutes before curtain for priority seating.



Open-captioned performances of this play:

Thursday, December 16

at 7:30 p.m.

Saturday, January 8

at 2:00 p.m.



Audio-described version of this play:

Saturday, January 8

at 2:00 p.m.



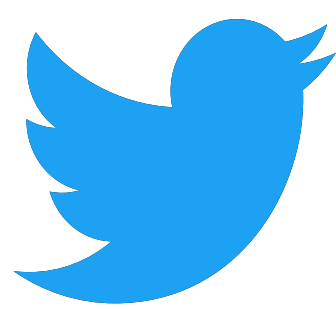
An audio-enhancement system is available for all performances. Both headset receivers and neck loops (to use with hearing aids outfitted with a “T” switch) are available at the coat check on a first-come basis.



Support for Shakespeare Theatre Company's Accessibility program provided by



Connect with us:



@ShakespeareinDC
#STCOneMoreTime

Shakespeare Theatre Company operates under an agreement between the League of Resident Theatres and Actors' Equity Association, the Union of Professional Actors and Stage Managers in the United States, and employs members of the Stage Directors and Choreographers Society and United Scenic Artists. The Company is a member of the Performing Arts Alliance, the D.C. Chamber of Commerce, Association of Performing Arts Professionals (APAP), American Alliance for Theatre and Education, and D.C. Arts and Humanities Education Collaborative.



CONCESSIONS/GIFTS



STC Concessions/Gifts are now online!



*Pre-order your snacks, drinks,
and gifts by clicking here.*

ORDER NOW

**Pick-up concessions at the bar
pre-show or at intermission.**

**Gift items can be picked up before or
after the show and at intermission.**



Artistic Director **Simon Godwin**

Executive Director **Chris Jennings**

By special arrangement with Nederlander Presentations, Inc.;
James L. Nederlander, President

**ONCE UPON A
ONE MORE
TIME**

Inspired by Music Recorded and Performed by

BRITNEY SPEARS

Book by **JON HARTMERE**

Performances begin **November 30, 2021**

Opening Night **December 17, 2021**

Sidney Harman Hall

LEAD CORPORATE SPONSOR:



LEAD INDIVIDUAL SPONSOR:

Michael Paese

RESTAURANT PARTNER:



2021/22 SEASON SPONSORS:

**Michael R. Klein and Joan Fabry
Harman Family Foundation**



MUSIC CREDITS

(YOU DRIVE ME) CRAZY

Written by Max Martin, Per Magnusson, Jorgen Elofsson, David Kreuger

Published by GV MXM/Kobalt Music Publishing, Universal Music - Careers on behalf of Universal Music Publishing MGB Scandinav

...BABY ONE MORE TIME

Written by Max Martin

Published by GV MXM/Kobalt Music Publishing

BOYS

Written by Pharrell Williams, Chad Hugo

©2001 EMI Blackwood Music Inc, Waters of Nazareth Publishing (GMR), All rights on behalf of Waters of Nazareth Publishing administered by Warner Geo Met Ric Music

All rights on behalf of EMI Blackwood Music Inc. administered by Sony Music Publishing (US) LLC, 424 Church Street, Suite 1200, Nashville, TN 37219.

All rights reserved. Used by permission.

Territory: World

CINDERELLA

Written by Britney Spears, Max Martin, Rami Yacoub, Warren Felder, Talay Riley

Published by Oldmara MXM, Oldmara Maratone/Kobalt Music Publishing, Universal Music - Z Songs on behalf of itself, and Britney Spears Music

CIRCUS

Written by Benny Levin, Claude Kelly, Lukasz Gottwald

Published by Prescription Songs dba Where Da Kasz At/Kasz Money Publishing, Studio Beast/Warner Chappell Music

EVERYTIME

Written by Britney Spears, Annette Stamatelatos

Published by Kobalt Music Publishing, Universal Music - Z Songs on behalf of itself, and Britney Spears Music/ Universal PolyGram Int. Publishing, Inc. on behalf of Universal Music Publishing Ltd.

FROM THE BOTTOM OF MY BROKEN HEART

Written by Eric Foster White

Published by Universal Music - Z Tunes Llc on behalf of itself, and 4 M.W. Music, Inc.

I WANNA GO

Written by Savan Harish Kotecha, Max Martin, Johan Schuster

©2011 EMI April Music Inc., Kobalt Music Publishing

All rights on behalf of EMI April Music Inc. administered by Sony Music Publishing (US) LLC, 424 Church Street, Suite 1200, Nashville, TN 37219.

All rights reserved. Used by permission.

Territory: World

I'M A SLAVE 4 U

Written by Chad Hugo, Pharrell Williams

©2001 EMI Blackwood Music Inc., Warner Geo Met Tric Music

All rights on behalf of EMI Blackwood Music Inc. administered by Sony Music Publishing (US) LLC, 424 Church Street, Suite 1200, Nashville, TN 37219.

All rights reserved. Used by permission.

Territory: World



IF I'M DANCING

Written by Chantal Kreviazuk, Ian Kirkpatrick, Simon Wilcox, and Sterling Fox
©2020 Sony/ATV Music Publishing Canada, Neverwouldathot Music LLC, BMG Platinum Songs, Blanket Fort Music, Fun Cooker/Peer Music, Buckley Tenenbaum Pub, Warner-Tamerlane
All rights on behalf of Sony/ATV Music Publishing Canada and Neverwouldathot Music LLC administered by Sony Music Publishing (US) LLC, 424 Church Street, Suite 1200, Nashville, TN 37219.
All rights reserved. Used by permission.
Territory: World

LUCKY

Written by Max Martin, Rami Yacoub, Alexander Kronlund
Published by Ole/Anthem Entertainment, GV MXM, GV Maratone/Kobalt Music Publishing, Universal Music Corp. on behalf of Universal/MCA Music Scand AB

MAKE ME... (feat. G-Eazy)

Written by Britney Spears, Gerald Gillum, Joseph Janiak, Matthew Burns
©2016 EMI Music Publishing LTD, Fly Eye Publishing LTD, G-Eazy Publishing, Britney Spears Music/Universal Music - Z Songs, Promised Land Music Ltd.
All rights on behalf of EMI Music Publishing LTD, Fly Eye Publishing LTD, and G-Eazy Publishing administered by Sony Music Publishing (US) LLC, 424 Church Street, Suite 1200, Nashville, TN 37219.
All rights reserved. Used by permission.
Territory: World

OOPS!... I DID IT AGAIN

Written by Max Martin, Rami Yacoub
Published by Ole/Anthem Entertainment, GV MXM/Kobalt Music Publishing

PASSENGER

Written by Katy Perry, Sia Furler, Andrew Swanson, Thomas Pentz
©2013 EMI Music Publishing LTD, Andrew Swanson Music/Kobalt Music Publishing, When I'm Rich You'll be My Bitch, WB Music Corp
All rights on behalf of EMI Music Publishing LTD administered by Sony Music Publishing (US) LLC, 424 Church Street, Suite 1200, Nashville, TN 37219.
All rights reserved. Used by permission.
Territory: World

PIECE OF ME

Written by Klas Ahlund, Pontus Winnberg, Christian Karlsson
Published by BMG Gold Songs/Murlyn Songs, Madhouse Music, Universal Music - MGB Songs on behalf of Universal Music Publishing MGB Scandinav

PRETTY GIRLS

Written by Amethyst Amelia Kelly, Jade Thirlwall, Jesy Nelson, Jonathan Shave, Leigh-Anne Pinnock, Perrie Edwards, George Astasio, Jason Pebworth, and Maegan Cottone
©2015 Sony Music Publishing (US) LLC, Sony/ATV Music Publishing (UK) Limited, EMI April Music Inc., Grand Hustle Anthems, Eternal Dance Media, Downtown Music Publishing, Pebworth Music, Universal Songs Of PolyGram Int., Inc. on behalf of Universal Music Publishing Ltd.
All rights on behalf of Sony Music Publishing (US) LLC, Sony/ATV Music Publishing (UK) Limited, EMI April Music Inc., Grand Hustle Anthems, and Eternal Dance Media administered by Sony Music Publishing (US) LLC, 424 Church Street, Suite 1200, Nashville, TN 37219.
All rights reserved. Used by permission.
Territory: World



SCREAM & SHOUT

Written by William Adams, Tulisa Contostavios, Jean Kouame, Jef Martens
Published by BMG Sapphire Songs, Will.I.Am Music, Lord Pharoah JB Music/Kobalt Music Publishing, Music All Stars B.V./Warner Chappell Music, Songs Of Universal, Inc. on behalf of itself, and U Can't Teach Bein The Shhh, Inc.

SOMETIMES

Written by Jorgen Elofsson
Published by GV Maratone/Kobalt Music Publishing, Universal Music - Careers on behalf of Universal Music Publishing MGB Scandinav

STRONGER

Written by Max Martin, Rami Yacoub
Published by Ole/Anthem Entertainment, GV MXM/Kobalt Music Publishing

TILL THE WORLD ENDS

Written by Max Martin, Lukasz Gottwald, Alexander Kronlund, Kesha Sebert
Published by Where Da Kasz At?, Kasz Money Pub, Dynamite Cop Music, MXM Music, Warner Chappell Music

TOXIC

Written by Cathy Dennis, Pontus Winnjberg, Christian Karlsson, Henrik Jonback
©2003 Toxic Songs LTD, Murlyn Songs/BMG Music
All rights on behalf of Toxic Songs LTD administered by Sony Music Publishing (US) LLC, 424 Church Street, Suite 1200, Nashville, TN 37219.
All rights reserved. Used by permission.
Territory: World

WOMANIZER

Written by Nikesha Briscoe, Rapheal Akinyemi
©2008 OutSyder Entertainment Music Pub., Universal Music Corp.
All rights on behalf OutSyder Entertainment Music Pub. administered by Sony Music Publishing (US) LLC, 424 Church Street, Suite 1200, Nashville, TN 37219.
All rights reserved. Used by permission.
Territory: World

WORK BITCH

Written by Britney Spears, William Adams, Sebastian Ingrosso, Otto Jettman, Ruth-Anne Cunningham, Anthony Preston
©2013 Sony/ATV Music Publishing (UK) Limited, BMG Sapphire Songs, Will.I.Am Music, Kinda Silly Publishing, Refune Music, Universal Songs Of PolyGram Int., Inc. on behalf of Universal Music Publishing AB, Universal Music - Z Songs on behalf of itself, and Britney Spears Music
All rights on behalf of Sony/ATV Music Publishing (UK) Limited administered by Sony Music Publishing (US) LLC, 424 Church Street, Suite 1200, Nashville, TN 37219.
All rights reserved. Used by permission.
Territory: World



CREATIVE TEAM

Scenic Designer
Anna Fleischle

Costume Designer
Loren Elstein

Lighting Designer
Sonoyo Nishikawa

Sound Designer
Andrew Keister

Video/Projection Designer
Sven Ortel

Wig Designer
Ashley Rae Callahan

Special Effects
Jeremy Chernick

Casting
**Paul Hardt,
Hardt Casting**

Associate Director
JV Mercanti

Associate Choreographer
Isidro Rafael

Production Stage Manager
Jennifer Rae Moore*

Music Director
Britt Bonney

Music Supervisor/
Coordinator
Patrick Vaccariello

Music Producer/
Co-Orchestrator
Matt Stine

Co-Orchestrator
James Olmstead

*Member of Actors' Equity Association,
the Union of Professional Actors and Stage Managers.



CoStar Group
is a proud sponsor
of the Shakespeare
Theatre Company



CAST *(in order of appearance)*

Narrator.....	Michael McGrath*
Little Girl.....	Adrianna Weir [†] , Mila Weir [†]
Original Fairy Godmother.....	Brooke Dillman*
Snow White.....	Aisha Jackson*
Sleeping Beauty.....	Ashley Chiu*
Belle.....	Belinda Allyn*
Rapunzel.....	Wonu Ogunfowora*
Princess and the Pea.....	Morgan Weed*
Little Mermaid.....	Lauren Zakrin*
Gretel.....	Selene Haro*
Little Red Riding Hood.....	Jennifer Florentino*
Goldilocks.....	Amy Hillner Larsen*
Cinderella.....	Briga Heelan*
Stepmother.....	Emily Skinner*
Belinda.....	MiMi Scardulla*
Betany.....	Tess Soltau*
Prince Charming.....	Justin Guarini*
Clumsy/Prince Ebullient.....	Raymond J. Lee*
Prince Erudite.....	Ryan Steele*
Prince Suave.....	Stephen Brower*
Prince Affable.....	Stephen Scott Wormley*
Prince Brawny.....	Joshua Johnson*
Prince Mischievous.....	Kevin Trinio Perdido*
Swing.....	Salisha Thomas*
Swing.....	Diana Vaden*
Swing.....	Matt Allen*
Swing.....	Matthew Tiberi*

*Member of Actors' Equity Association,
the Union of Professional Actors and Stage Managers.

[†]Alternate in role



Dance Captain: Selene Haro*

UNDERSTUDIES:

Matt Allen* (Narrator), Belinda Allyn* (Cinderella),
Stephen Brower* (Prince Charming), Jennifer Florentino*
(Betany/Snow White), Amy Hillner Larsen*
(Belinda/Original Fairy Godmother/Stepmother),
Salisha Thomas* (Snow White/Betany), Diana Vaden*
(Belinda/Original Fairy Godmother/Stepmother),
Lauren Zakrin* (Cinderella)

FOR THIS PRODUCTION

Stage Manager: Lisa Ann Chernoff*

Assistant Stage Manager: Ana M. Garcia*

Associate Scenic Designer: Frank Oliva

Associate Scenic Designer: Frank McCullough

Associate Costume Designer: Abby Hahn

Assistant Costume Designer: Amanda Jenks

Assistant Costume Designer: Courtney Irizarry

Assistant Costume Designer: Andrea Hood

UK Costume Assistants: Jennifer Gregory, Zahra Mansouri

Costume Assistants: Christopher Hynds, Holly McCaffrey

Associate Wig Designer: Ashley Robinson

Hair Consultant: Nikiya Mathis

Makeup Consultants: Kelly Budd, Earon Healey

Associate Lighting Designer: Karen Spahn

Assistant Lighting Designer: Charlotte McPherson

Lighting Assistant: Tyler Dubuc

Associate Sound Designer: Brian Hsieh

Assistant Sound Designer: Emma Wilk

Associate Video/Projection Designer: Lacey Erb

*Member of Actors' Equity Association,
the Union of Professional Actors and Stage Managers.



Projection Assistant: Zoey Crow
Special Effects Associate Designer: Ben Hagen
Magic Consultant: Nate Dendy
Associate Casting Director: Melanie Tojio Lockyer
Production Supervisor: Full Stage Productions LLC,
Chris Smith, Pat Shea
Production Manager: Matt Marsden
Production Management Associate: Cody Spellman
Production Carpenter: Matt McKim
Advance Flyman and Automation Programmer: Kevin Keene
Production Props: Daniel Brown
Production Electrician: Stephen Atwell
Moving Light Programmer: Colin Scott
Production Sound Engineer: Daniel Lundberg
Advance Sound: Tylor Foster
Production Video Engineer: Andrew Gusciora
Projection Programmer: Ted Charles Brown
Video Engineer Shop Prep: Chris Kurtz
Video Engineer Install: Greg Peeler
Animator: Logan Smith
Copyist: Russ Bartmus
Associate Copyist: Alex Chilowicz
Synth Programmer: Billy Jay Stein and Ethan Deppe
for Strange Cranium
Drummer Programmer: Jeff Roberts
Music Assistant: Simon Li
Aerial Design: AntiGravity®
Aerial Direction: Christopher Harrison
Company Manager: Steven Breiter
Assistant Company Managers: Des'ree Brown, Nia Burns
Production Assistants: Julia Bates, Heather Janay Ogden
Immigration Services: Eleanor Pelta, Morgan,
Lewis & Bockius LLP



Scenery by Hudson Scenic Studio, Inc.; Chain Motor System by Show Motion, Inc. Milford, CT; Flying by Foy; Lighting Equipment and Special Lighting Effects by PRG Lighting; Sound and Video Equipment by Sound Associates, Inc.; Costumes executed by Coco Dupont, Colin Davis Jones Studio, Eric Winterling, Inc., John Kristiansen New York Inc.; Millinery by Lynne Mackey Studio; LED costume executed by Hat Rabbit; Crochet bonnet executed by Maria Ficalora; Costume painting by Hochi Asiatico; Shoes built by T.O. Dey and LaDuca Shoes; Gloves executed by Wing and Weft; Costume special thanks to Dyenamix, Vogue Too, and Gene Mignola.

Rehearsed at the New 42nd Street Studios.

MUSICIANS

Music Director/Keyboard: Britt Bonney

Associate Music Director/Keyboard: Clay Ostwald

Percussion: Jeffrey Roberts

Guitar: Beth Cannon

Electric Bass: Peter Revell

Keyboard: Leigh Delano

Contractor: Bruno Nasta

The musicians employed in this production are members of and represented by Washington D.C. Federation of Musicians, Local 161-170 of the American Federation of Musicians.

PRODUCTION CREW

Wardrobe Supervisor: Bobby Pearce

Hair Supervisor: Gabbie Vincent

Head Sound: Ashton McWhirter

A2: Adam Fitchett

Wardrobe Run Crew: Daisy Howard (supervisor),
Alexandra Beverina, Jules Capuco, Lily Komarow,
Emily McCort

Wig Run Crew: Deneen Freeman, Margaret Sackman



Wardrobe Prep/Swings: G.E. Burgtorf, Carissa Gilson,
Felicia Hecker, Stephanie Smith

Run Crew: Niki Sears (Deck Chief), Elizabeth Burch,
Travis Byrne, Christian Campbell, Sarah Schlehlein (sub),
Rachael Sheffer, Abby Wasserman, Rachel Wolf (sub)

Automation: Craig Gatling, Andrew Wilkinson

Video Operator: James LaDow

Light Board Operator: Brice Hilburn

Followspot Operators: Calvin Anguiano, Peter Goldschmidt

Young Performer Supervisors: Jen Jacobs,
Heather Janay Ogden

COVID-19 SAFETY COMMITTEE

Tom Haygood, Tim Fowler, Janice Jenson, Joy Johnson,
Lindsey Morris, Max Schwager

Safety Managers: Hue Adams, Steven Breiter, Des'ree Brown,
Nia Burns, Janice Jenson, Joy Johnson, Joe Smelser,
Hilary Surface

For additional members of the production staff,
please see the [full staff listing](#).

whyhotel



**The space
and comfort
of home,
with the
consistency
and reliability
of a hotel.**

WhyHotel DC National Mall

Stay like you're in the historic Southwest Waterfront neighborhood, not like you're in a cookie-cutter hotel. Located just steps from DC's most iconic monuments and walking distance to the Wharf, this is more than just a place to spend the night, it's a place to call home for as long as you're here. Each of our guest rooms come equipped with a complete kitchen, washer and dryer, full-size refrigerator, and walk-in closets.

sales@whyhotel.com

202.991.0427



ABOUT BRITNEY SPEARS



PHOTO OF BRITNEY SPEARS BY MICHELANGELO DI BATTISTA.

Britney Jean Spears—singer, dancer, icon. From the small town of Kentwood, Louisiana, this southern girl had one dream in mind—to bring joy to all those around her through music and dance. She got her start performing in the '90s revival of *The Mickey Mouse Club*. There, she was able to break into the music industry and work with iconic



Swedish pop producers such as Max Martin and Denniz Pop.

Her first album, *...Baby One More Time*, was released in 1999 and was a critical and commercial success, certified double platinum in just one month. Even though she was just 17 years old, it was clear from the start she was destined for greatness. With six number one albums, six MTV Video Music Awards, and a star on the Hollywood Walk of Fame, Britney has proven herself to be a living legend in the pop music industry. She has often been cited as a trend-setter in pop music. Her debut in 1999 catalyzed the successes of other pop princesses such as Christina Aguilera and Mandy Moore. Her fifth studio album, *Blackout*, which was also produced by Spears, became a major influence for 2010s pop music. With its innovative electropop and dubstep sound, critics often refer to it



BRITNEY SPEARS PERFORMING IN CONCERT IN 2011. PHOTO: ALAMY.

as some of her best work. Beyond her music, Britney is also known for her heavily choreographed dancing in her music videos and stage productions. Her elaborate stage productions and music videos were a staple in the MTV era, with kids and teens of all backgrounds staying up all night to learn her signature choreography.

Once Upon a One More Time serves as a testament to Britney's hard work



and influence. As the reigning “Pop Princess,” it’s fitting that *Once Upon a One More Time* would draw on the influence of princesses who have had their stories written for them instead of by them. The musical is a homage to the talent that inspired not only a generation, but a whole industry—all on her own creativity.



BRITNEY SPEARS PERFORMING IN CONCERT IN 2014. PHOTO: FLICKR.



ABOUT KEONE AND MARI MADRID



PHOTO OF KEONE AND MARI MADRID BY FRANK TERRY.

As directors and choreographers, Keone and Mari Madrid are known for their narrative lyrical hip-hop dance style. They have become sought-after creatives in the dance community after first coming to prominence for their viral video dance routine to “Is This Love” by Bob Marley, in which they performed a hip-hop routine as an elderly couple in love.



They then went on to choreograph for the reality television competition series *So You Think You Can Dance* and were participants on the reality competition series *World of Dance*. Most recently, Keone and Mari co-created, directed, and choreographed their first full length nominated Off-Broadway theater dance show, *Beyond Babel* which was a *New York Times* Critic's Pick and nominated for two Drama Desk Awards. They have also choreographed music videos and stage shows for many of today's top music artists including BTS, Justin Bieber, Billie Eilish, Ed Sheeran, Flying Lotus, and Kendrick Lamar. They show no signs of slowing down, having recently been named the choreographers for the pre-Broadway run of *The Karate Kid - The Musical*, premiering in St. Louis in spring of 2022.

PLAY ON!

Your gift makes it happen



GIVE BY DECEMBER 31

To make a gift, please visit us **online**
or call Donor Services at 202.547.1122, option 3.

Photo of the cast of 2020's *The Amen Corner* by Scott Suchman.



ABOUT SHAKESPEARE THEATRE COMPANY

OUR MISSION

Shakespeare Theatre Company creates, preserves, and promotes classic theatre—ambitious, enduring plays with universal themes—for all audiences.

OUR VISION

We create theatre to ignite a dialogue that connects the universality of classic works to our shared human experience in the modern world.

OUR VALUES AND FOCUS

Shakespeare Theatre Company produces and presents the highest quality classic theatre productions across genres, bringing them to vibrant life in a provocative, imaginative, and accessible style.

With Shakespeare at our core, we explore plays of national and international relevancy—those with profound themes, complex characters, and heightened language—through a contemporary 21st-century lens.



We expand the classic theatre repertoire in America by reviving and commissioning adaptations and translations of important forgotten works.

We create impactful and responsive arts education and community engagement programs to connect audiences to the significance of classic works and themes. We provide a home for leading classical artists and a training ground for the next generation of theatre artists and arts administrators.

Shakespeare Theatre Company is honored to welcome everybody to our theatre, which sits on the unceded homeland of the Nacotchtank, Piscataway Conoy, and Pamunkey peoples and their descendants. It is our hope that in gathering together communities from near and far to engage in art and storytelling, we are doing so responsibly, with respect and recognition of Indigenous people and First Nation members and elders who are with us, and of all the Native peoples for whom D.C. is their ancestral home.



NOVA

THEATRE

INNOVATION

PRESENTS

BY DR. DREW LICHTENBERG
RESIDENT DRAMATURG



Das Vogelnest.

Ein kleines Ding! Doch wunderbar
Hat es gebaut ein Vogel paar
Aus Hälmchen, Moos und zartem
Reis,
Mit größter Kunst und vielem Fleiß.
Noch sorgsam bedt den innern Raum
Und dieses kleine Meisterstück
Enthält des Vogels größtes Glück.

Es liegen auf des Nestes Grund
Die Eierchen, so zart und bunt.
Und erst nach einigen Wochen gar,
Wie stolz ist da das Vogel paar!
Denn in dem warmen Nestlein ruht
Des Vögleins Schatz, die junge Brut.
Welch andres Glück, so eng und klein,
Schloß mehr an Lieb und Treue ein!



Das Mär Königs

die alle Grenzen zeigen. Als
die kein böser Nachbar jemals
Dann ließen sie ihre
zu reiten. Als sie schon in
Königssohnes hinzu und
Rönnigin. Viele schöne
bestimmen. Suche die
bald eine würdige Ju
herzlichen Abschied,
durch das Tor hina
Viele Wochen
Der Sohn kam da
sehen hatte. S
und nannte ihn
Einmal r
über. Rein W
Gebirge her
in feltfame



*Oh, baby, baby,
How was I supposed to know ...
That something wasn't right here?*

Some works of art—song lyrics, perhaps, or stories—are so instantly recognizable, it seems they have always existed. Did someone actually compose them, one might ask, or have they always existed, waiting to be written down?

*Oh, baby, baby
I shouldn't have let you go ...
And now you're out of sight, yeah.*

This is arguably the case with the songs of Britney Spears. So, too, with the group of stories, called many things over hundreds of years, that we know now as fairy tales. Both may seem like they have always been there, waiting to be discovered. But, to paraphrase one of Britney's hits, they're not that innocent.



Show me how you want it to be

Tell me, baby

Cause I need to know now, oh because ...

Shakespeare, no stranger to fairies, called them other things. Lady Macbeth, upbraiding her husband, speaks of “A woman’s story at a winter’s fire, authorized by her grandam.”

And in another play, “A sad tale’s best for winter,” says Prince Mamilius to his mother, Hermione, “one of sprites and goblins.” The title of that play? *The Winter’s Tale*.

If we believe Shakespeare, then, these tales originated around a winter’s fire. These stories keep us warm, but they also have the power to leave lasting impressions. They are stories of love and loss, need and desire, handed down from one generation to the next. The details change; the essentials remain the same. Like



verses of a popular tune, they are simple but, once stuck in your head, prove hard to dislodge, to see clearly for what they are.

My loneliness

Is killing me

And I

I must confess

I still believe, still believe ...

And they are women's stories—as Lady Macbeth says, “authorized” or authored by one's “grandam” or grandmother. In the four centuries since Shakespeare, however, these stories have been told predominantly by men. Not coincidentally, these stories contain gender stereotypes that remain with us, either to be accepted or challenged.

When I'm not with you I lose my mind

Give me a sign ...

Cinderella, Sleeping Beauty, and Little Red Riding Hood were first set



down in Charles Perrault's *Histoires ou contes du temps passé* (1697), translated into English in 1729 as *Tales of Mother Goose*. Elected to the Académie Française by Louis XIV, the aristocratic Perrault could not be further from Shakespeare's garrulous grandam. He capitalized on a French vogue for fairy tales (*contes de fees*) popularized by one Madame d'Aulnoy, his contemporary and a far more popular writer at the time. Perrault's are the stories remembered most widely today.

*Oh, baby, baby,
The reason I breathe is you
Boy you got me blinded ...*

More familiar to today's audiences are the Brothers Grimm, whose two-volume *Kinder-und Hausmärchen* (children's and household tales) were first published in 1812 and 1815. Highly educated, like Perrault, the



Grimms' role was primarily editorial. Scholar Jack Zipes estimates that over 100 of their stories derived from conversations with women. Dorothea Viehmann, a tailor's wife and mother of six, visited the Grimms' house after selling vegetables in the town market, regaling them with dozens. Was she the true "authorizer" of stories such as Snow White, Rapunzel, and Hansel and Gretel? We may never know.

Hit me baby one more time!

This legacy of telling and retelling forms the plot and overarching theme of the new musical, *Once Upon a One More Time*. When approached about the possibility of developing a work out of the music that made her famous, Britney Spears herself suggested the outlines of the project, a re-telling of the stories popularized by Perrault, the Grimms, and others (looking at you, Hans Christian Andersen).



As conceived and choreographed by husband-and-wife team Keone and Mari Madrid, from a script by Jon Hartmere, the stage in *Once Upon a One More Time* is a landscape of dreams, a place where a Godmother tells stories to a sleepy Child, and where we see them acted out for our amusement. But those iconic female characters are also an extorted labor force, paid less than their male counterparts. The “Narrator,” who runs them on a demanding schedule, bears more than a slight resemblance to a highly-strung, supercilious Stage Manager or Director. We are in a backstage meta-musical, *Noises Off* by way of *Mamma Mia!*.

It’s also a world badly in need of women’s liberation, which begins to arrive by way of other, 20th-century women’s stories, namely those of Betty Friedan and Simone de Beauvoir.



Yoking together these worlds, feminist and fairytale, are those songs, still possessing their ambiguously emancipatory power. Deriving from the musical canon of a modern-day pop music princess, Britney Spears, they reappear in this context as something rich and strange, often boasting reworked lyrics.

Shakespeare pulled the same trick, inserting popular airs into *Much Ado About Nothing* and other plays. John Gay's *The Beggar's Opera*, the first "ballad opera" in 1726, was also one of the first jukebox musicals, replacing the lyrics to "Greensleeves" and folk tunes with thinly veiled political satire. Bertolt Brecht and Kurt Weill rode this formula (and much of the plot) all the way to the bank in 1928 with their *The Threepenny Opera*. "Die Morität von Mackie Messer," with its poison-pill lyrics about the ills of modern society, was the definitive pop song



of the Weimar Republic, an inspiration to Bobby Darin and, more indirectly, Bob Dylan. In *Once Upon a One More Time*, “Toxic” or “Piece of Me” play the role of similarly acid-spiked cocktails. As you watch Cinderella dealing with an oblivious Prince Charming, the false allyship of her Stepmother, and a panopticon where she is under constant surveillance, it’s worth asking: how can we win our freedoms from our own oppressive dreamworlds? What does it mean to be Cinderella in a world where one’s desires and actions are out of one’s control?

The answer may surprise you.



CAST BIOGRAPHIES



MATT ALLEN*

Swing

NEW YORK: Broadway: *Escape to Margaritaville, Something Rotten!, Honeymoon in Vegas, The Wedding Singer, Oklahoma!,*

Annie Get Your Gun. Off-Broadway: *Newsical.*

NATIONAL TOURS: *Billy Elliot, Spamalot, The Producers, Annie Get Your Gun, Jolson: The Musical.*

REGIONAL: Arkansas Rep: *Chicago* (Amos Hart)

| Casa Mañana/NCT/Ogunquit Playhouse: *Buddy*

Holly (Hipockets Duncan) | Paper Mill Playhouse:

Honeymoon in Vegas, The Little Mermaid (Scuttle),

Pippin | North Shore Music Theatre: *A Christmas*

Carol (Jacob Marley, IRNE Award nomination),

All Shook Up. FILM: *The Producers.* TV: *Gotham*

(Arkham Guard), *Law & Order: Organized Crime*

(M.E. Charles Gray). PERSONAL: he/him/his |

Training: Southern Illinois University at Edwardsville:

BA in Jazz Performance Trumpet | MattAllen.xyz



BELINDA ALLYN*

Belle

NEW YORK: Broadway:

Allegiance | Radio City Music

Hall: *The Christmas Spectacular*

Starring the Radio City Rockettes

(Mrs. Claus, singer). REGIONAL: Paper Mill



Playhouse: *Beauty and the Beast* (Belle), *West Side Story* (Maria) | Seattle Repertory Theatre: *Here Lies Love* (Imelda u/s). PERSONAL: she/her/hers. Proud FilAm! Belinda recently debuted her solo show at Forestburgh Playhouse's first ever *In the Works in the Woods* festival. She will be performing the show at Green Room 42 in NYC February 2022. Follow her on social media for updates! | Teaching: Hello Broadway with The Broadway Collective. | Training: Oklahoma City University: Bachelor of Music in Music Theatre. For Mr. Patrick. | Instagram: [@belinda_allyn](#) | TikTok: [@belinda_allyn](#) | [BelindaAllyn.com](#).



STEPHEN BROWER*

Prince Suave

NEW YORK: Broadway: *Anastasia*.

TOURS: *Anastasia* (Dmitry),

An American in Paris (Adam),

Pippin. REGIONAL: Ogunquit

Playhouse, Connecticut Repertory Theatre, Lyric

Theatre of Oklahoma, The Muny. PERSONAL:

he/him/his. Stephen is an actor and writer, who

is occasionally funny. | Training: Texas State

University: BFA in Musical Theatre | Instagram:

[@stephenbrower](#) | TikTok: [@stephen_brower](#).



ASHLEY CHIU*

Sleeping Beauty

NEW YORK: Off-Broadway:
KPOP. TOURS: A Chorus Line.

REGIONAL: North Carolina

Theatre: *Annie* | Proctors Theatre:

Kris Kringle. TELEVISION: *FBI: Most Wanted* (CBS),
Madam Secretary (CBS), *Jimmy Kimmel Live!* (ABC).

Feature film debut coming Fall 2022! PERSONAL:

she/her/hers. For all the kids who didn't see

themselves in fairy tales. Endless love to my family.

| Training: New York University's Tisch School of the

Arts: BFA Drama and Minor in Law and Society |

Social Media: @ashleychiuchiu | AshleyChiu.com.



BROOKE DILLMAN*

The Original Fairy Godmother

FILM: *Superbad*, *4th Man Out*,
Dismissed. TELEVISION: *Bob's*
Burgers, *The Great North*,
Central Park, *Wrecked*,

Chad, *Marvel's MODOK*, *Superstore*, *Kickin'*

It, *The Big Bang Theory*, *The Middle*, *Good*

Luck Charlie, *Con Man*, *Blue Collar TV*, *Six Feet*

Under. | Instagram: @[therealreviewrevue](https://www.instagram.com/therealreviewrevue).



JENNIFER FLORENTINO*

Little Red Riding Hood

NATIONAL TOUR: *On Your Feet*. REGIONAL: Emerson

Colonial Theatre: *Moulin*

Rouge! The Musical | New York

City Center Encores!: *Evita*. TELEVISION/FILM:

Steven Spielberg's *West Side Story*, *Starling*,

Modern Love, *The Marvelous Mrs. Maisel*, *Isn't It*

Romantic, *The Kennedy Center Honors* (Gloria

Estefan), *SNL*. OTHER: Concert Dance: Deeply

Rooted Dance Theater, Sonya Tayeh's *You'll*

Still Call Me By Name. Jennifer feels delighted

to rejoin the cast of *Once Upon a One More*

Time. TRAINING: Point Park University: BFA in

Dance | Social Media: @jenniferflorentino.



JUSTIN GUARINI*

Prince Charming

NEW YORK: Broadway: *In Transit*

(dir. Kathleen Marshall), *Wicked*

(dir. Joe Mantello), *Paint Your*

Wagon (dir. Marc Bruni), *Romeo*

& Juliet (dir. David Leveaux), *American Idiot* (dir.

Michael Mayer), *Women on the Verge of a Nervous*

Breakdown (dir. Bartlett Sher). PERSONAL: he/

him/his. Justin Guarini is a sought-after performer,

coach, author, and speaker. Author of *Audition*

Secrets Vol. 1 (available on Amazon) | Teaching:



Pace University | Training: University of the Arts, The School for Film & Television | Social Media: @JustinGuarini | JustinGuarini.com.



SELENE HARO*

Gretel

NEW YORK: Off-Broadway: *Beyond Babel* (2x Drama Desk Award nomination). TOURS: Billie Eilish: *When We All Fall Asleep*

Tour, Paula Abdul: *Total Package* Tour. TELEVISION: *Cirque Du Soleil: One Night for One Drop*, Beats by Dre: *Serena Williams Queen of Queens*. PERSONAL: she/her/hers. Selene is an artist motivated to uplift and guide people's introspections towards a direction that's self-healing, progressive, and empowering to take on the life they choose to create. She is dedicated to being this spark within people through her intentional performances, profound mentorship, and applicable education on what bringing synergy into all compartments in our lives can do. | Teaching: Taught at dance camps in countries around the world including Indonesia, Switzerland, Canada, New Zealand, Russia, China, and Spain. | Training: Choreo Cookies Dance Team, Keone & Mari Madrid, Motus The Company | Instagram: [@SeleneHaro](https://www.instagram.com/SeleneHaro) | Selidro.com.

I live in
the District
& Love it!



Judi Seiden
202.547.4419
judi@judiseiden.com

BHHS Real Estate Legend



BERKSHIRE HATHAWAY
HomeServices
PenFed Realty

705 North Carolina Ave, SE, Washington, DC 20003, 202.608.1882 x111.517 o



BRIGA HEELAN*

Cinderella

FILM: *Dean* (Tribeca Film Festival Winner). TELEVISION: *Great News* (prod. Tina Fey), *Love* (prod. Judd Apatow), *Ground Floor*

(prod. Bill Lawrence), *Cougar Town*, *Undateable*, *B Positive*, *Jane by Design*, *Crazy Ex-Girlfriend*, *Happy Endings*, *Curb Your Enthusiasm*, *Modern Family*, *Brooklyn Nine-Nine*, *Truth Be Told*, and lots of pilots in TV heaven. PERSONAL: she/her/hers | Training: Walnut Hill School of the Arts, University of Southern California: BA in Theater | Dedicating this one to my Grandmothers, Anne and Judy.



AISHA JACKSON*

Snow White

NEW YORK: Broadway: *Beautiful: The Carole King Musical*, *Waitress* (OBC), *Frozen* (OBC). Off-Broadway: *Invisible Thread*.

REGIONAL: American Repertory Theater: *Witness Uganda* | Arvada Center: *Memphis*. TELEVISION: *Central Park* (animated series). PERSONAL: she/her/hers. Aisha is a Georgia native committed to being the change she wishes to see. She was the first Black woman to portray Anna in *Frozen* on Broadway, and she desires to continue making space for other performers and creatives of color to be represented equally, on stage and



off. Luke 1:37. For Vaughn and Amy | Training:
University of Northern Colorado: Bachelor of Arts
in Musical Theatre | Instagram: [@gifted2sing](#)
| Twitter: [@starringaisha](#) | [AishaJackson.com](#).



JOSHUA JOHNSON*

Prince Brawny

FILM: *In the Heights*. TELEVISION:
Saturday Night Live, *The Get
Down* (Netflix), *Vinyl* (HBO),
Helpsters (Apple TV), and others.

OTHER: Joshua is an accomplished professional
dancer from NYC and has worked with artists such
as Beyoncé, Jennifer Lopez, Ariana Grande, Camilla
Cabello, and more. He enjoys training in martial
arts such as Muay Thai and Brazilian Jiu-Jitsu.



AMY HILLNER LARSEN*

Goldilocks

NEW YORK: Off-Broadway:
The Marvelous Wonderettes,
A Musical About Star Wars,
Newsical. NATIONAL TOURS:

Hairspray; *Priscilla, Queen of the Desert*. REGIONAL:
Oriental Theatre Chicago: *First Wives Club* |
Hollywood Bowl: *Hairspray* | Pittsburgh CLO:
Footloose | Rubicon Theater Company: *Fiddler
on the Roof* | First Stage Theater: *Seussical*.
INTERNATIONAL: Tokyo Philharmonic: *Disney on*



Classic. TELEVISION: 66th Annual Tony Awards (Tracy in RCCL's *Hairspray* montage), *Gigi: Almost American* (season 1 regular, Hulu). PERSONAL: she/her/hers. Amy is the proud wife of writer/producer Kevin Larsen and catmom to George. Repped by Take 3 Talent. | Training: Wagner College: BA in Theatre Performance | Instagram: [@ahillarsen](#).



RAYMOND J. LEE*

Clumsy/Prince Ebullient

NEW YORK: Broadway: *Aladdin*, *Anything Goes*, *Groundhog Day*, *Honeymoon in Vegas*, *Mamma Mia!*. Off-Broadway: The Public

Theater: *Soft Power*, *Two Gentlemen of Verona* | New York City Center Encores!: *Mack & Mabel*, *The Wild Party*. REGIONAL: Center Theater Group: *Soft Power* | La Jolla Playhouse: *Tiger Style!* | American Conservatory Theater: *Stuck Elevator* | Portland Center Stage: *The 25th Annual Putnam County Spelling Bee* | The Muny: *Paint Your Wagon*, *Seussical*. FILM: *Marriage Story*, *Ghost Town*, *The Mikado Project*. TELEVISION: *Billions*, *Red Oaks*, *The First Lady*, *That Damn Michael Che*, *The Jim Gaffigan Show*, *Smash*, *Succession*, *Fame*. VOICEOVER: DreamWorks, Netflix, Nickelodeon, and several audiobooks. PERSONAL: he/him/his. Ray told Britney she's the "Greatest Artist to ever walk the face of this Earth" on MTV on May 14, 2000. Feel free to YouTube it! Proud father to Princess



Ella. Repped by Nicolosi & Co and managed by STG. Ray grew up in Montgomery County and is so excited to be back performing in the D.C. metro area. | Training: Northwestern University | Twitter/Instagram: [@raymondjlee](#) | [RaymondJLee.com](#).



MICHAEL McGRATH*

Narrator

NEW YORK: Broadway: *Nice Work If You Can Get It* (Tony, Drama Desk, and Outer Critics Circle Awards), *Tootsie*, *The Front Page*, *On the Twentieth Century*, *She Loves Me*, *Memphis*, *Is He Dead?*, *Spamalot* (Tony Award and Drama Desk Award nominations), *Wonderful Town*, *Little Me!*, *Swinging on a Star* (Theatre World Award), *The Goodbye Girl*, *My Favorite Year*, *Plaza Suite* (upcoming). Off-Broadway: New York City Center Encores!: *Du Barry was a Lady*, *Follies*. OTHER: Off-Broadway, Regional, and Summer Stock credits galore! Welcome back to the Theatre.



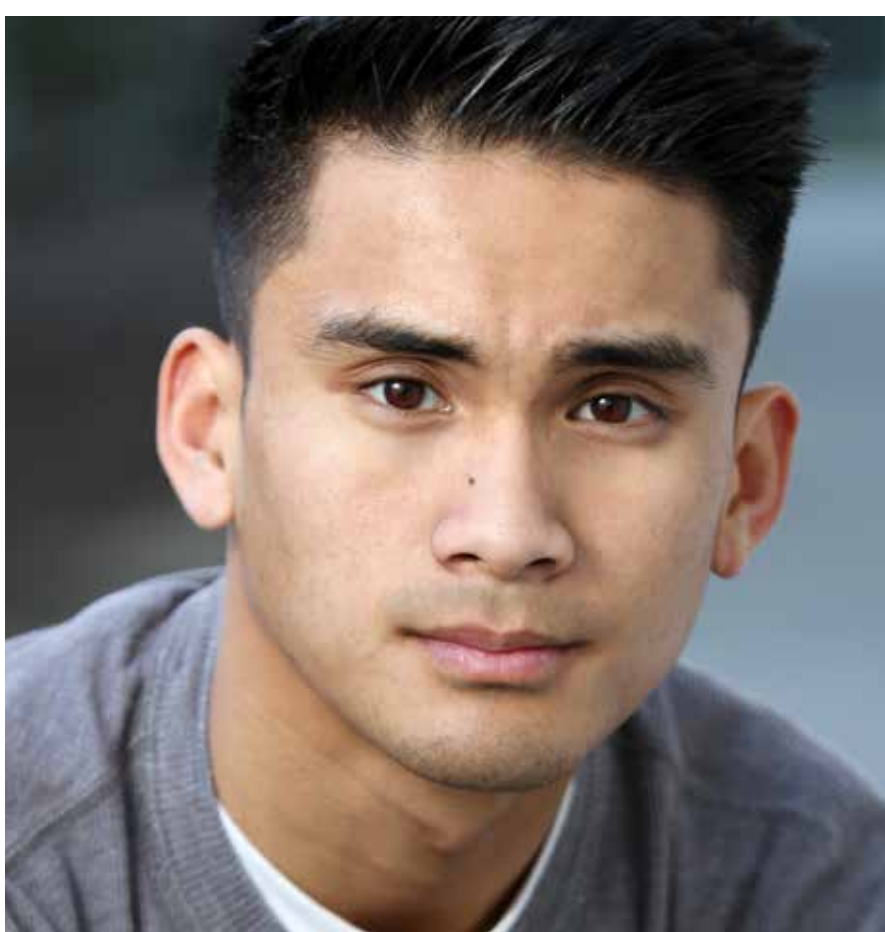
WONU OGUNFOWORA*

Rapunzel

NEW YORK: Broadway: *A Bronx Tale* (OBC), *Summer: The Donna Summer Musical* (OBC), Off-Broadway: Roundabout Theatre Company: *Scotland, PA* | Theatre 80: *We*



Are The Tigers (OOBCR). US TOUR: *Sister Act*. REGIONAL: La Jolla Playhouse, North Shore Music Theatre, Main State Music Theatre, Fireside Theatre among others. INTERNATIONAL: *Sister Act* (Japan). TV/COMMERCIAL: *WeCrashed* (AppleTV), *The Tonight Show* (NBC), *The Tony Awards* (CBS), *Every Second Counts* (Planned Parenthood). PERSONAL: Wonu is a proud Nigerian American and lifelong member of the St. Francis Academy Choir. | Instagram: [@wonubian](#) | Twitter: [@thisiswonu](#) | [ThisIsWonu.com](#).



KEVIN TRINIO PERDIDO*

Prince Mischievous

REGIONAL: East West Players: *Mamma Mia!* | Main Street Theatre Company: *Frederick*. AWARDS:

2003 San Fernando Valley

Academy Elementary Spelling Bee Champion.

OTHER: Disneyland Resort Dancer and Puppeteer: *Fantasmic!*, *Pixar Play! Parade*, *Paint the Night*. |

Training: Groundlings: Improv Comedy, Second City Hollywood: Improv Comedy, Studio 24 Seven:

Scene Study, Killian's Workshop: Commercial

Technique | Instagram: [@perderder_k](#).



MIMI SCARDULLA*

Belinda

NEW YORK: Broadway: Kristin Chenoweth's *For the Girls*. Off-Broadway: *We Are The Tigers*, *Gigantic*. REGIONAL: The Old Globe: *Heart of Rock and Roll*. PERSONAL: she/her/hers. MiMi is an Actor, Director, and Choreographer, the Associate Choreographer for Kristin Chenoweth, and is a fierce advocate for Size Diversity on stage. | Teaching: Broadway Dance Center and Broadway Dreams Foundation | Training: The Boston Conservatory | Social Media: @mimidulla.



EMILY SKINNER*

Stepmother

NEW YORK: Broadway: *The Cher Show*, *Prince of Broadway* (Outer Critics Circle Award nomination), *Side Show* (Tony Award nomination, Drama League Award), *Jekyll & Hyde*, *The Full Monty*, *James Joyce's The Dead*, *Dinner at Eight* (Outer Critics Circle Award nomination), *Billy Elliot* (BroadwayWorld Award). Off-Broadway: Transport Group Theatre Company: *Picnic* (Drama Desk Award nomination) | Playwrights Horizons: *My Life With Albertine* | Carnegie Hall: *Jerry Springer: The Opera* | New York City Center Encores!: *Fiorello!*, *No Strings*, *Pardon My English*, *A Tree Grows in Brooklyn* | Originated roles at Roundabout Theatre



Company, York Theatre, WPA Theatre, Paramount Theatre at Madison Square Gardens. NATIONAL TOURS: *Ghost Brothers of Darkland County*, *Billy Elliot*, Disney's *On the Record*. REGIONAL: multiple roles at The Kennedy Center, Signature Theatre, Alliance Theatre, Theatre Under The Stars, Ford's Theatre, Virginia Repertory Theatre, Lyric Theatre of Oklahoma, American Conservatory Theatre, Long Wharf Theatre, The Old Globe, Goodspeed Opera House, Bucks County Playhouse, The Muny, and many others. She has sung with symphonies internationally and her numerous CD recordings may be found at iTunes and Amazon.com | Instagram: [@emilysskinner](#) | [Emily-Skinner.com](#).



TESS SOLTAU*

Betany

NEW YORK: Broadway: *Wicked*, *The Addams Family* (with Roger Rees and Brooke Shields). Off-Broadway: The Public Theater: *Into the Woods* (with Amy Adams and Denis O'Hare) | Playwrights Horizons: *Far From Heaven*. REGIONAL: Signature Theatre: *Diner* (world premiere) | 5th Avenue Theatre: *Romy and Michele's High School Reunion* (world premiere) | Pittsburgh CLO: *Rock of Ages* | Paper Mill Playhouse: *Grease*. TELEVISION: *True Detective* (HBO), *NCIS: New Orleans* (CBS), *The Good Fight* (CBS), *White Collar* (USA), *Law & Order: SVU* (NBC). FILM: *Paterno*



(HBO), *Love and Other Drugs* (Fox 2000 Pictures).
PERSONAL: she/her/hers | Training: Carnegie Mellon University | Instagram: [@tesssoltau](#).



RYAN STEELE*

Prince Erudite

BROADWAY: *Carousel*, *Newsies* (Astaire Award nomination), *Matilda*, *West Side Story* (Baby John), *Billy Elliot*. NATIONAL

TOUR: *An American in Paris* (Jerry Mulligan).

FILM/TELEVISION: *I'm Thinking of Ending Things* (Netflix), *Better Nate Than Ever* (Disney+), *Fosse/Verdon* (FX), *Girls5Eva*, *Ted 2*, *Five Dances*, NBC's *Peter Pan Live!*, *Smash*. PERSONAL: he/him/his.



SALISHA THOMAS*

Swing

NEW YORK: Broadway and 1st

National Tour: *Beautiful: The Carole King Musical*. REGIONAL:

Trevor the Musical, *Dreamgirls*,

Once on This Island, *Spring Awakening*, *Hairspray*.

OTHER: Former Miss California, Princess Tiana in *Mickey and the Magical Map* at Disneyland.

PERSONAL: Salisha is the host of *Black Hair in the Big Leagues* and *The Salisha Show* on the Broadway Podcast Network, a blogger, a voiceover artist, and enjoys giving Masterclasses. |



Training: California State University, Fullerton: BA |
Instagram: [@salishathomas](#) | [SalishaThomas.com](#).



MATTHEW TIBERI*

Swing

NEW YORK: Broadway: *Finding Neverland*. TOURS: *Joseph... Dreamcoat* (dir./choreo. Andy Blankenbuehler). REGIONAL:

Virginia Stage Company: *Matilda* (Rudolpho) | Summer Theatre of New Canaan: *Singin' in the Rain* (Don Lockwood) | Fiddlehead Theatre: *Priscilla, Queen of the Desert* (Adam/Felicia) | Geva Theatre, Fireside Dinner Theatre, Merry-Go-Round Playhouse, White Plains Performing Arts Center. FILM: *Isn't It Romantic*. TELEVISION: *Modern Love*, *The Good Fight*. COMMERCIAL: Verizon Wireless 5G. PERSONAL: he/him/his. Matthew spent his time during the pandemic pursuing his passion for baking. He also began, and has continued, studying ASL via the Sign Language Center in NYC. He is ecstatic to be back in the theatre! | Training: Hofstra University: BA in Dance | [@matthew_tiberi](#).



DIANA VADEN*

Swing

NEW YORK: Broadway: *Tootsie* (Tony Award nomination, Best Musical). Off-Broadway: New



York City Center Encores!: *Mack & Mabel*; *Hey, Look Me Over*. REGIONAL: Kennedy Center: *The Music Man*, *How to Succeed...* | Paper Mill Playhouse: *The Sting* | Marriott Theatre: *Holiday Inn* | San Diego Musical Theatre: *West Side Story*. FILM: *Any Body Can Dance 2*. TELEVISION: *Sinatra 100*, *The Eric Andre Show*. OTHER: Las Vegas: *Steve Wynn's Showstoppers* | Royal Caribbean Cruise Lines: *Chicago*, *Hairspray*. PERSONAL: she/her/hers. Diana is a performer and poet. She is the Co-founder and Executive Creative Director of *Radiant.nyc* | Training: University of Southern California: BA in Acting, BA in Creative Writing | Instagram: [@dianavaden](#) | [DianaVaden.com](#).



MORGAN WEED*

Princess and the Pea

NEW YORK: Broadway: *American Psycho*. Off-Broadway: *Next to Normal*, *Rent*, *The Last Five Years*, *SAVED!*, *Neurosis*. REGIONAL:

FLY, *First Wives Club*, *Dangerous Beauty*. FILM: *The Greatest Showman*, *Becks*, *No One Called Ahead*. TELEVISION: *The Good Fight*, *Chicago Med*, *Fosse/Verdon*, *Thanksgiving*, *Elementary*, *Person of Interest*. PERSONAL: she/her/hers | Teaching: *A Class Act NY* | Training: Northwestern University: BS in English Literature, BS in Communications, Certificate in Music | [MorganWeed.com](#).



ADRIANNA WEIR

Little Girl

REGIONAL: Prince William Little Theater: *Annie* | Calvary Theater Arts: *The Wizard of Oz*. TELEVISION: PBS,

Nickelodeon, CBN. PRINT: Gymboree, Legoland, Busch Gardens, Amtrak, MLB. Nova Star Award; Best Commercial | PERSONAL: An award-winning competitive dancer and model. Protege of Linda Townsend Mgmt. Hugs and love to Mommy & Daddy. | Instagram: [@the_wonder_weirs](#).



MILA WEIR

Little Girl

REGIONAL: Prince William Little Theater: *Annie* | Calvary Theater Arts: *The Wizard of Oz*. TELEVISION: PBS, Nickelodeon,

NFL, Kohls, BET. PRINT: Gymboree, Legoland, Busch Gardens | PERSONAL: Mila is an award-winning competitive dancer and model. Best friend, big sister Adrianna. Protege of Linda Townsend Mgmt. Special thanks to Mommy & Daddy. | Instagram: [@the_wonder_weirs](#).



STEPHEN SCOTT WORMLEY*

Prince Affable

NEW YORK: Broadway: *The Lion King* (u/s Simba). Off-Broadway: *Black Nativity Now!*. LIMITED TOUR: *In the Heights* (Benny).

INTERNATIONAL TOUR: Tokyo Philharmonic: *Disney on Classic*. REGIONAL: Signature Theatre: *The Scottsboro Boys* (Mr. Bones), *Jelly's Last Jam* (Melrose) | Barter Theatre: *Les Misérables* (Marius), *A Streetcar Named Desire* (Young Collector), *Tarzan* (Terk) | North Shore Music Theatre: *Hairspray* (Seaweed) | Syracuse Stage: *Aint Misbehavin'* (Andre) | Theatre LILA: *Big Fish* (Will). TELEVISION: *The Blacklist*, *Good Morning America* (Simba), *The Kennedy Center Honors*. AWARDS: Helen Hayes Award. OTHER: Playwrights Horizons: *Hart Island* (workshop) | Baltimore Symphony Orchestra featuring John Waters: *Hairspray* (Seaweed). For Gwen Always. | StephenScottWormley.com.



LAUREN ZAKRIN*

Little Mermaid

NEW YORK: Broadway: *Harry Potter and the Cursed Child* (Polly, Delphi/Moaning Myrtle u/s, San Francisco Company); *Natasha, Pierre, and The Great Comet of 1812* (Natasha/Sonya u/s, Asst. Dance Captain); *Rock of Ages* (Sherrie). Off-Broadway: *We Are The Tigers*



(Riley), *Cruel Intentions* (Kathryn), ...*Great Comet* (Natasha u/s, Dance Captain). TOURS: *Wicked* (Glinda u/s), *Grease* (Sandy), *Legally Blonde* (Elle/Margot u/s). REGIONAL: Cape Playhouse: *Little Shop of Horrors* (Audrey) | Music Circus: *Legally Blonde* (Elle) | American Repertory Theater: ...*Great Comet* (Natasha u/s, Dance Captain) | Planet Hollywood: *Surf: The Musical* (Brooke) | The Muny: *Legally Blonde* (Elle). TELEVISION: *Jesus Christ Superstar LIVE!*, *Legally Blonde: The Search for the Next Elle Woods*, *The Tony Awards*, *Good Morning America*, *The Today Show*. OTHER: NYC Readings: *Almost Famous*, *Once Upon a One More Time*, *Flashdance*, *Catch Me If You Can*. PERSONAL: she/her/hers. Lauren is also a Certified Personal Trainer, Yoga Teacher, and Nutrition Coach. | Instagram: [@LaurenZakrin](#), [@LoLoHealthandWellness](#) | [LaurenAshleyZakrin.com](#).

*Member of Actors' Equity Association,
the Union of Professional Actors and Stage Managers.



ARTISTIC BIOGRAPHIES

JON HARTMERE

Book

Jon Hartmere has written screenplays and teleplays for Fox, Disney, Amazon, Paramount, TWC, Miramax, Nickelodeon, and Sesame Street Productions, including the recent *The Upside*, starring Bryan Cranston, Kevin Hart, and Nicole Kidman. He wrote the lyrics and co-wrote the book of the musical *bare: A Pop Opera*, and was a field agent on season five of MTV's *Punk'd*.

KEONE AND MARI MADRID

Keone and Mari Madrid, who directed and choreographed *Once Upon a One More Time*, are globally acclaimed artists known for explosively viral dance videos and collaborations with the world's top musical acts. After choreographing and starring in Justin Bieber's hit music video "Love Yourself," which has been viewed over 1.6 billion times on YouTube alone, they became one of the industry's most sought-after dance teams. Their choreography for music videos and historic appearances for the global K-Pop sensation BTS, Billie Eilish, Mark Ronson, Ed Sheeran, Flying Lotus, Kendrick Lamar, and more, has earned nominations for MTV Video Music Awards and UK Video Music Awards. Their recent work creating, directing, co-producing, and starring in their first full-length theatrical



Off-Broadway, *Beyond Babel*, earned them a *New York Times* Critic's Pick and two Drama Desk Award nominations. Their upcoming stage work includes choreography for the Broadway-bound *The Karate Kid – The Musical*. As performers, they have appeared on the hit television series *World of Dance*, *So You Think You Can Dance*, *Ellen*, and *Dancing with the Stars*; in Times Square Billboard campaigns; and dance competitions worldwide. The new Disney animated short *Us Again*—told entirely through music and dance, and inspired by the duo's choreography—debuted this spring before *Raya and the Last Dragon*, and will be available on Disney+ in June. On top of their work as directors, choreographers, and dancers, they are husband and wife and parents to a two-year-old daughter.

DAVID LEVEAUX

Creative Consultant

David Leveaux is a five-time Tony Award-nominated and Emmy Award-nominated director. On Broadway, he directed the Tony Award-winning revivals of *Nine*, *The Real Thing*, and *Anna Christie*; as well as acclaimed revivals of Tom Stoppard's *Arcadia* and *Jumpers*, *Fiddler on the Roof*, *Betrayal*, *Electra*, *A Moon for the Misbegotten*, *Cyrano de Bergerac*, *The Glass Menagerie*, and the recent production of *Romeo & Juliet* starring Orlando Bloom and Condola Rashad. David received a 2018 Emmy Award nomination for his direction



of NBC's award-winning live broadcast of *Jesus Christ Superstar*. He directed the 50th anniversary production of Tom Stoppard's *Rosencrantz and Guildenstern Are Dead* at The Old Vic, *Closer* at the Donmar Warehouse, the musical *Backbeat* in the West End, and Jenny Worton's adaptation of Ingmar Bergman's *Through A Glass Darkly* starring Carey Mulligan. London theatre includes: *Arcadia*, *Jumpers*, *The Real Thing*, *The Late Middle Classes*, *Nine*, *Sinatra Live* at the London Palladium, *Electra*, *The Father*, *No Man's Land*, *Moonlight*, *Betrayal*, *The Distance From Here*, *'Tis Pity She's a Whore*, *Romeo and Juliet*, and *A Moon for the Misbegotten*. He also directed the feature film *The Exception* starring Christopher Plummer.

ANNA FLEISCHLE

Scenic Designer

BROADWAY: *Hangmen*. INTERNATIONAL: West End: *Hangmen*; *The End of Longing*; *Don Juan in Soho*; *Death of a Salesman*; *Home, I'm Darling*; *Everybody's Talking About Jamie*; *The Exorcist* | Noel Coward Theatre: *2:22 A Ghost Story* | Theater in der Josefstadt (Vienna): *Geheimnis Einer Unbekannten* | Royal Court Theatre: *Hangmen*, *A Kind of People*, *Liberian Girl* | Royal Court Theatre/Complicité Theatre Company: *The Kid Stays in the Picture* | Theatr Clwyd/National Theatre: *Home, I'm Darling* (2019 Olivier Award nomination, Best Set Design and Best Costume Design) | Crucible



Theatre (Sheffield)/Korea: *Everybody's Talking About Jamie* | Complicité Theatre Company/Schaubühne (Berlin): *Beware of Pity* | St. James Theatre/Theatr Clwyd: *RENT: 20th Anniversary Production* | Birmingham Repertory Theatre: *The Exorcist* | Young Vic: *Death of a Salesman, Hamlet* | Bridge Theatre: *Two Ladies, A German Life, A Very Very Very Dark Matter* | Royal Shakespeare Company: *The Two Noble Kinsmen, Cymbeline, Love's Sacrifice* | Regent's Park Open Air Theatre: *Henry V* | National Theatre Wales: *Before I Leave* | National Theatre: *Love the Sinner* | Almeida Theatre: *The Writer, Before the Party* | Shakespeare's Globe: *Much Ado About Nothing, Troilus and Cressida* | The Old Vic: *Rosencrantz and Guildenstern Are Dead* | Donmar Warehouse: *The Way of the World* | National Theatre/DV8 Physical Theatre: *John* | Royal Exchange Theatre (Manchester): *West Side Story, Blindsided, Saturday Night and Sunday Morning, Rat's Tales* | National Theatre/DV8 Physical Theatre/Sydney Opera House: *Can We Talk About This?* | Royal Exchange Theatre (Manchester)/Young Vic: *You Can See the Hills, Love and Money* (2007 Olivier Award nomination, Outstanding Achievement in Affiliate Theatre). TOURS: *Everybody's Talking About Jamie, RENT: 20th Anniversary Production, The Exorcist, Can We Talk About This?*. OPERA: LA Philharmonic: *Weimar Nightfall: Seven Deadly Sins* | English Touring Opera: *Don Giovanni, Iphigénie en Tauride, Paul Bunyan, King Priam* | Opéra



National de Lorraine: *Candide* | Sadler's Wells/
Classical Opera Company/UK Tour: *Zaide*. DANCE:
Sadler's Wells: *Message in a Bottle* | Scottish Dance
Theatre: *Second Coming*. FILM: Underexposed Arts:
Monologue Hub, Soliloqui. INSTALLATIONS: Young
Vic: *The Unforgotten*. AWARDS: Olivier Award for
Best Set Design (2016), Critics' Circle Best Designer
Award (2015), and Evening Standard Award for
Best Design (2015) (*Hangmen*); Olivier Award for
Outstanding Achievement in Opera (2014) (*King
Priam/Paul Bunyan*). OTHER: Founding Member of
Scene/Change (2020–present); Associate Artist,
Young Vic (2020–present); Board Member, Regent's
Park Open Air Theatre (2019–present); Ambassador
for PiPA (2019–present). PERSONAL: Anna is an
award-winning set and costume designer, working
internationally in theatre, opera, and dance.

LOREN ELSTEIN

Costume Designer

INTERNATIONAL: The Old Vic: *Rosencrantz
and Guildenstern Are Dead* | Park Theatre:
The Ugly One | Welsh National Opera: *Don
Pasquale* | Longborough Opera: *La Traviata* |
Lyric Hammersmith: *Terror* | Menier Chocolate
Factory: *The Lie* | Theater Trier (Germany): *Unruhe*
| St. James Theatre: *RENT* | Royal Court Theatre:
Primetime | Playhouse Theatre: Matthew Perry's *The
End of Longing*. As Associate Designer for Anna
Fleischle: Royal Court Theatre/West End/Atlantic



Theatre Company: Martin McDonagh's *Hangmen* | West End: *Everybody's Talking About Jamie* | National Theatre/DV8 Physical Theatre: *John*. UK TOUR: *RENT*. OTHER: Loren Elstein has designed costumes, sets, and installations for theatre, film, dance, and opera productions across the world. AWARDS: Best Design Award from the Australian Production Design Guild for Joe Orton's *Loot* in 2012. PERSONAL: Training: National Institute of Dramatic Art (NIDA) in Sydney, Australia.

SONOYO NISHIKAWA

Lighting Designer

INTERNATIONAL: As a collaborator of Canadian director Robert Lepage: *A Midsummer Night's Dream*, *The Dragon's Trilogy*, *The Seven Streams of the River Ota* (Toronto Dora Mavor Moore Award, Outstanding Lighting Design in 1996) | Théâtre ESPACE GO/National Arts Centre's French Theatre: Martin Crimp's *The Rest Will be Familiar to You from Cinema* (dir. Christian Lapointe) | Théâtre ESPACE GO: *The Useful Life of Evelyne de la Chenelière* (dir. Marie Brassard), *Electra* (dir. Serge Denoncourt) | Theatre du Nouveau Monde: *Fluve* (dir. Angela Konrad) | National Theatre (London)/Chekhov Festival (Moscow)/International Tour: *The Seven Streams of the River Ota* | Nissay Theatre (Tokyo): Yukio Mishima's *Black Lizard* (dir. David Leveaux), *La Strada* (dir. David Leveaux). OPERA: Metropolitan Opera: *La damnation de*



Faust (2008–2013). AWARDS: Soirée des Masques of the Académie québécoise du théâtre prize for best lighting in 2004 for Marguerite Duras' *L'éden Cinéma*, Prix Jaques-Pelletier in 2003 for *Antigone* and in 2016 for *Macbeth*. PERSONAL: Originally from Japan, Sonojo Nishikawa has been a lighting designer since 1986. From 1990 to 1992, she studied in London in an overseas program of the Ministry of Education, Culture of Japan. Endowed with unparalleled inventiveness and attention to detail, Sonojo occupies a unique place in the Quebec theatre world.

ANDREW KEISTER

Sound Designer

NEW YORK: Broadway: *Charlie and the Chocolate Factory*, *Godspell*, *Company* (2006 Revival), *Taller Than a Dwarf*. As associate designer: *Catch Me If You Can*, *Jersey Boys*, *Hairspray*, *Mary Poppins*. As a partner in SCK Sound Design: *On Your Feet!*, *Dr. Zhivago*, *Radio City Christmas Spectacular*. REGIONAL: The Public Theater, Atlantic Theatre Company, Stratford Shakespeare Festival, La Jolla Playhouse, Trinity Rep.

SVEN ORTEL

Video/Projection Designer

NEW YORK: Broadway (selection): *Thoughts of a Colored Man*, *Deuce*, *Faith Healer*, *Jumpers*, *The*



Little Mermaid, Women on the Verge..., Wonderland, Newsies (Tony Award nomination). Off-Broadway: Theatre for a New Audience: *Hamlet*, Julie Taymor's *A Midsummer Night's Dream* (Drama Desk Award nomination) | The Public Theater: *Party People* | MCC Theater: *Carrie*. REGIONAL: The Old Globe: *Life After* | Alliance Theatre: *Candide* (Suzie Bass Award), *Ever After, Maybe Happy Ending* | Guthrie Theater: *You are here*. INTERNATIONAL: West End (selection): *The Sea, Marguerite, Jumpers, The Woman in White* | Zurich/Barcelona: *Tiefeland* | Vienna, Stuttgart: *Rebecca* | St. Petersburg, Russia: *The Ring Cycle*. TOURS: *A Disappearing Number, Measure for Measure*. OTHER: Sven designs projections and imagery for Theatre, Opera, Dance, Music, and beyond. PERSONAL: Teaching: Sven proudly leads the MFA program in Integrated Media at the University of Texas at Austin.

ASHLEY RAE CALLAHAN

Wig Designer

NEW YORK: Broadway: As Associate/Assistant Designer: *Beetlejuice, Ain't Too Proud, Summer: The Donna Summer Musical, Six Degrees of Separation, The Color Purple, Holiday Inn, Beautiful: The Carole King Musical, Allegiance*. Off-Broadway: *Jersey Boys* | New York City Center: *Evita* | Roundabout Theatre Company: *Amy and the Orphans* (Associate Designer) | The New Group: *Sweet Charity* (Associate Designer). TOURS:



Jersey Boys. INTERNATIONAL: Toronto: *Sousatzka* (Associate Designer). REGIONAL: Bucks County Playhouse: *Mamma Mia!*, *Ebenezer Scrooge's Big Playhouse Christmas Show* | Maltz Jupiter Theatre: *Dracula: A Comedy of Terrors* | Arena Stage: *Anything Goes* (Associate Designer) | Disneyland: *Frozen* (Associate Designer). TELEVISION: *Jersey Boys Live*, NBC's *Jesus Christ Superstar Live* (Associate Designer; Emmy Award nomination).

PAUL HARDT, HARDT CASTING

Casting

BROADWAY/NATIONAL TOUR: *West Side Story*, *Come Fly Away*, *August: Osage County*, *Hot Feet*, *On Golden Pond*, *Legends*, *Whistle Down the Wind*, *A Bronx Tale*, *Dirty Dancing*, *The Bodyguard*. TOUR: *Cats*. REGIONAL: Goodspeed Musicals, Delaware Theatre Company, Bucks County Playhouse, and others.

JENNIFER RAE MOORE*

Production Stage Manager

STC: *Cymbeline*. NEW YORK: Broadway: *The Great Society*, *My Fair Lady*, *The King and I*, *You Can't Take It with You*, *The Bridges of Madison County*, *Golden Boy*, *Women on the Verge of a Nervous Breakdown*, *The Coast of Utopia*. Off-Broadway: various productions at Lincoln Center Theater, The Public Theater, Manhattan Theatre




Club, New York Theatre Workshop, Signature Theatre, Vineyard Theatre, and Theatre for a New Audience. REGIONAL: PlayMakers Repertory Company: *Mr. Joy* | American Repertory Theater: *Nocturne, Stone Cold Dead Serious* | Chautauqua Theater Company: 13 seasons as Production Stage Manager. PERSONAL: Teaching: Stage Management Professor at Adelphi University, guest lecturer at The Yale School of Drama, The Juilliard School, Columbia University, Bucknell University, Virginia Commonwealth University, Auburn University, and Northern Vermont University.

LISA ANN CHERNOFF*

Stage Manager

NEW YORK: Broadway: *The Great Society, My Fair Lady, Oslo, The King and I, The Bridges of Madison County, Golden Boy, Catch Me If You Can, Women on the Verge..., Ragtime, Shrek*. Off-Broadway: Playwrights Horizons: *Unknown Soldier; Pocatello; Detroit; Rapture, Blister, Burn; Prayer for My Enemy* | New York Theatre Workshop: *Mary Jane* | Roundabout Theatre Company: *Kingdom Come* | Primary Stages: *The Model Apartment* | The Public Theater: *King Lear*. NATIONAL TOUR: *Spamalot*. VIRTUAL: *First Date, Amour, Brooklyn*.



CHINA CHILCANO

by José Andrés



**A CELEBRATION OF THE
FASCINATING FLAVORS OF
PERU FROM JOSÉ ANDRÉS**

418 7th Street NW
202.783.0941 | chinachilcano.com



ANA M. GARCIA*

Assistant Stage Manager

NEW YORK: Broadway: *Fiddler on the Roof, It Shoulda Been You, Once, High, Looped, Martin Short: Fame Becomes Me*. Off-Broadway: *Gloria: A Life; Party Face; Love, Loss, and What I Wore*. NATIONAL TOURS: *Les Misérables, Cabaret, Dora the Explorer, Beauty and the Beast*. OTHER: *Cirque du Soleil: Zarkana, Radio City Christmas Spectacular*, and several Off-Broadway musicals and plays. PERSONAL: she/her/hers | Teaching: Adjunct Instructor at NYU Tisch School of the Arts and Fordham University | Instagram: [@ag.wooddesigns](https://www.instagram.com/ag.wooddesigns).

FRANK J. OLIVA

Associate Scenic Designer

As Associate Designer: STC: *Noura*. NEW YORK: Broadway: *Hangmen* (des. Anna Fleischle), *West Side Story, Oklahoma!*. REGIONAL: LA Philharmonic: *Weimar Cabaret* (Associate Designer) | Weston Playhouse, Two River Theater, Cincinnati Symphony Orchestra, Cherry Lane Theatre, among others. FILM: *Marriage Story* (Netflix). OTHER: 2019 Met Museum Costume Exhibition: *CAMP* (Associate Designer). PERSONAL: Training: New York University | FrankJOliva.com.

*Member of Actors' Equity Association, the Union of Professional Actors and Stage Managers.



The designers at this theatre are represented by United Scenic Artists, Local USA 829, of the International Alliance of Theatrical Stage Employees.



CAMP

SHAKESPEARE

2022



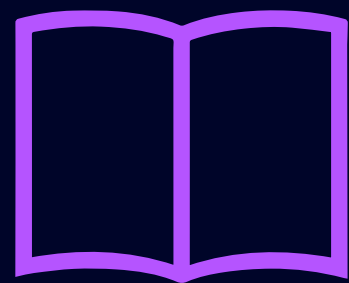
**REGISTRATION BEGINS
DECEMBER 6**



EPILOGUE

Things to read, watch, and listen to next!

READ



- ***The Feminine Mystique*** by Betty Friedan not only inspires our princess heroines, but is also credited with sparking the second-wave feminist movement after being published in 1963. It argued that women should be heard and should have the ability to define their own femininity.
- Zany fanaticism and magic take on a new narrative in ***The Princess Bride***. Prior to its 1987 movie adaptation, it was a novel by William Goldman published in 1973. This comical fairy tale follows a man named Westley as he searches for his childhood love, Princess Buttercup. In a journey of



revenge, six-fingered men, and true love, it is no wonder that this novel has become a favorite in classrooms and beyond.

- The story of Cinderella gets a new perspective in ***Cendrillon: A Caribbean Cinderella*** (1998) by Robert D. San Souci. This retelling of the classic fairy tale told from the perspective of the magical fairy godmother is inspired by elements of the Creole story of Cinderella and captures the romance and magic of the classic story.



- In 2001, the computer animated film ***Shrek*** took audiences by surprise as they laughed their way through childish jokes poking fun at princesses and ogres. *Shrek* popularized the fairy tale parody genre in the computer animated



world and became such a success that it generated three sequels and a Tony Award-winning Broadway musical starring Sutton Foster and Brian d'Arcy James.

- The 2018 documentary ***RBG*** follows the life of the late Supreme Court Justice, Ruth Bader Ginsberg, who was popularly dubbed as “The Notorious R.B.G.” A trailblazer both ahead of her time and long overdue, Ruth Bader Ginsberg spent her entire career advocating for women’s rights and gender equality.
- The Netflix documentary series ***This is Pop*** (2021) takes an in-depth analytical look at what defines and influences pop music. The episode entitled “**Stockholm Syndrome,**” dives into Swedish influence on pop music and how they created the iconic sounds of ABBA, Ace of Base, and Britney Spears herself.



LISTEN

- Antonín Dvořák's opera ***Rusalka*** borrows elements from the classic Hans Christian Andersen fairy tale *The Little Mermaid*. In the aria “**Měsíčku na nebi hlubokém,**” or “Song to the Moon,” water-nymph Rusalka begs the moon to tell a human Prince of her love. Metropolitan Opera singer Kristine Opolais offered a haunting rendition in their **2017 production**.
- Britney Spears' 2007 album ***Blackout*** is consistently considered her best work. It inspired a whole new generation of pop music and was even included in the *Rolling Stone's* 500 Greatest Albums of All Time list. Album highlights include hits “Gimme More” and “Piece of Me.”



UP NEXT:



Our Town

By **THORNTON WILDER**

Directed by **ALAN PAUL**

FEBRUARY 17-MARCH 20

ORDER TODAY!

PRODUCTION SPONSORS:

**Anita M. Antenucci
Bonnie and Louis Cohen
John and Meg Hauge
Maureen and Michael McMurphy**

2021/22 SEASON SPONSORS:

**Michael R. Klein and Joan Fabry
Harman Family Foundation**



Pulitzer Prize-winning ***Our Town*** by **Thornton Wilder** takes the stage next year with direction by STC's Associate Artistic Director Alan Paul. In a gripping story about humanity and community, STC brings this American classic to the stage by celebrating the artists who call the DMV-area home. This hauntingly beautiful tale strips the need for exuberant pomp and circumstance and focuses instead on the relationships cultivated by each character on the stage. Narrated by a character known only as "The Stage Manager," it tells the small-town story of the inhabitants of Grover's Corners. In a time where the world has felt so disconnected, *Our Town* reminds us of how important it is to cultivate relationships with our loved ones and to not take anyone for granted. It reminds us that the world is constantly changing, so the little things in life should be appreciated and celebrated.



FOR SHAKESPEARE THEATRE COMPANY



SIMON GODWIN

Artistic Director

Simon Godwin joined Shakespeare Theatre Company as Artistic Director in September 2019. He has served as Associate Director of the National Theatre of London, the Royal Court Theatre, the Bristol Old Vic, and the Royal and Derngate Theatres (Northampton). While at the Royal Court, Simon directed seven world premieres, including *Routes*, *If You Don't Let Us Dream*, *We Won't Let You Sleep*, *NSFW*, *The Witness*, *Goodbye to All That*, *The Acid Test*, and *Wanderlust*. He made his debut at the National Theatre with *Strange Interlude* followed by *Man and Superman*, and went on to direct *The Beaux' Stratagem*, *Twelfth Night*, a celebrated production of *Antony and Cleopatra* with Ralph Fiennes and Sophie Okonedo, and the world premiere of Simon Wood's *Hansard*. Most recently, he returned to the National Theatre to direct *Romeo & Juliet*, an original film for television (Sky Arts in UK/PBS in US) starring Josh O'Connor and Jessie Buckley. Simon has also directed at the Royal Shakespeare Company, including productions of *Timon of Athens* with Kathryn Hunter in the titular role, which was reimaged in early 2020 for Theatre for a New



Audience in New York City and Shakespeare Theatre Company, an acclaimed *Hamlet*, which toured to the Kennedy Center, and *The Two Gentlemen of Verona*. In 2019, Simon made his Tokyo debut, directing a Japanese cast in *Hamlet* for Theatre Cocoon. Other productions include *The Little Mermaid*, *Krapp's Last Tape/A Kind of Alaska*, *Faith Healer*, *Far Away*, *Everyman*, *Habeas Corpus*, and *Relatively Speaking*. In 2012 Simon was awarded the inaugural Evening Standard/Burberry Award for an Emerging Director.



CHRIS JENNINGS

Executive Director

STC: Joined the Company in 2004. ADMINISTRATION:

General Manager: Trinity

Repertory Company (1999–

2004), Theatre for a New Audience (1997–1999);

Associate Managing Director: Yale Repertory

Theatre; Assistant to the Executive Producer:

Manhattan Theater Club; Founder/Producing

Director: Texas Young Playwrights Festival;

Manager: Dougherty Arts Center. MEMBERSHIPS:

Currently serves on the Board of the DowntownDC

BID, THE ARC, the Penn Quarter Neighborhood

Association, theatreWashington, and is a member

of the League of Resident Theatres (served on

AEA and SSSDC Negotiating Committees); has

served as a panelist for the NEA, D.C. Commission

on the Arts and Humanities, Mid Atlantic Arts



Foundation, and Pew Theatre Initiative. AWARDS: Arts Administration Fellowship; National Endowment for the Arts. TRAINING: University of Miami: BFA in Theatre/Music; Yale School of Drama: MFA in Theatre Management.

ALAN PAUL

Associate Artistic Director

STC: All the Devils Are Here; Peter Pan and Wendy; The Comedy of Errors (Helen Hayes Award nomination, Best Director); Camelot; Romeo and Juliet; Kiss Me, Kate; Man of La Mancha (Helen Hayes Award nomination, Best Director); A Funny Thing Happened on the Way to the Forum (Helen Hayes Award, Best Director); The Boys From Syracuse; The Winter's Tale; Twelfth Night. Recent highlights include Cabaret at Olney Theatre Center (Helen Hayes Award nomination, Best Director); Spring Awakening at Round House Theatre; The Pajama Game at Arena Stage; Kiss Me, Kate at 5th Avenue Theatre (Seattle); Silence! The Musical (Helen Hayes Award nomination, Best Director) and The Rocky Horror Show at Studio Theatre; and I Am My Own Wife at Signature Theatre. Classical credits include the world premiere of Penny at Washington National Opera (Kennedy Center), Butterfly/Saigon (Strathmore), Fire and Air (Kennedy Center), The Pirates of Penzance at Palm Beach Opera, and numerous collaborations with The National Symphony Orchestra. In 2013,



Alan was the only American finalist for the European Opera Directing Prize in Vienna, Austria. Alan has taught at UMD's Opera Studio and Washington National Opera's Young Artist Program.

DR. DREW LICHTENBERG

Resident Dramaturg

As Resident Dramaturg for the last decade, work on more than 50 productions, including numerous world premieres, and over half of the 36-play Shakespeare canon. He has worked as a production dramaturg abroad at the Royal National Theatre of Great Britain (twice), in New York on Broadway at the Roundabout Theatre Company, and off, with the New York Shakespeare Festival. Regionally, he has worked with the Oregon Shakespeare Festival (Play On!), Yale Repertory Theatre, Baltimore Center Stage, and Williamstown Theatre Festival. His dramaturgical writing has appeared at theatres such as the Lincoln Center for the Performing Arts, the McCarter Theatre Center at Princeton University, and American Conservatory Theatre in San Francisco. As a translator and adaptor, he has worked off-off-Broadway at La Mama Experimental Theatre Club and locally at Woolly Mammoth Theatre Company. He is currently an adjunct professor at Catholic University of America, formerly a part-time faculty member at Eugene Lang College at the New School, and will be a Lecturer at David Geffen School of Drama at Yale



University in Spring of 2022. He has received an MFA and DFA in dramaturgy and dramatic criticism from Yale School of Drama and is the author of the scholarly monograph, *The Piscatorbühne Century: Aesthetics and Politics in the Theater after 1927* (New York & London: Routledge, 2021). He is the co-host of STC's *Shakespeare Hour Live*.

LISA BELEY

Head of Voice and Text

STC: *Peter Pan and Wendy; Everybody; The Oresteia; Vanity Fair; Richard III; The Panties, The Partner and The Profit; The Comedy of Errors; Romeo and Juliet; Camelot; Noura; Hamlet; Twelfth Night; The Lover and The Collection; Othello (2017 Free For All); The School for Lies; Macbeth; King Charles III | ACA: As You Like It, Measure for Measure, Macbeth, Pericles, Julius Caesar, A Midsummer Night's Dream, Coriolanus.*
INTERNATIONAL: Vancouver, Canada: Rumble Theatre: *Indian Arm | Vancouver Playhouse: The Music Man | UBC Theatre: The Glass Menagerie, The Cherry Orchard, The House of Atreus, Arcadia | York University: Our Country's Good.* FILM: Dialect, voice, text: *Warcraft, Horns, Firewall, Monster Trucks, Diary of a Wimpy Kid, Suckerpunch, The Watchman, Hidden, Apollo 18, The Uninvited, Hot Rod, Pirates of the Caribbean 3, Elektra.*
TELEVISION: Dialect: *The Good Doctor, Tin Star, Bates Motel, The 100, Alcatraz, Rogue, Red Widow,*



The Secret Circle, Heavenly, Human Target, The Good Wife, Inseparable, Just Cause. PERSONAL: Directing: *The Bay at Nice, Agamemnon* | Teaching: STC's Academy for Classical Acting: Voice, Speech and Text Instructor; Canada's National Voice Intensive: Voice and Text Instructor | Training: York University: MFA in Acting, Voice Teacher's Diploma; University of British Columbia: BFA in Acting.



STC BOARD OF TRUSTEES

Michael R. Klein, *Chair*

Abbe David Lowell, *Vice Chair*

Michael Paese, *Treasurer*

Emily Lenzner, *Secretary*

Simon Godwin, *Artistic Director*

TRUSTEES

Nicholas W. Allard

Anita M. Antenucci

Michael Bahar

Jeffrey D. Bauman

Michael Beriss

Landon Butler

Dr. Mark Epstein

Stefanie Erkiletian

Nichole Francis
Reynolds

Ambassador James K.
Glassman

David Grier

Barbara Harman

Jerry J. Jasinowski

Scott Kaufmann

Sudhakar Kesavan

J. Kendall Lott

Gail MacKinnon

Bernard F. McKay

Maureen McMurphy

Dr. Michelle
McMurry-Heath

Ramona Mockoviak

Melissa A. Moss

Michael Paese

Karishma Shah Page

Dame Karen
Pierce DCMG

Michelle Quest

Vincent Roberti

Jane Roberts

Stephen M. Ryan

Pauline A. Schneider

Jonathan Sherman

Mary Streett

Suzanne S. Youngkin



EX-OFFICIO TRUSTEE

Chris Jennings, *Executive Director*

EMERITUS AND HONORARY TRUSTEES

R. Robert Linowes*,
Founding Chair

James B. Adler

Stephen E. Allis

Heidi L. Berry*

David A. Brody*

Melvin S. Cohen*

Ralph P. Davidson*

Robert E. Falb

James F. Fitzpatrick*

Dr. Natwar Gandhi†

Dr. Sidney Harman*

John Hill†

Stephen A. Hopkins*

Lawrence A. Hough†

W. Mike House†

Michael Kahn

Lady Manning

Kathleen Matthews

William F. McSweeney

V. Sue Molina

Walter Pincus

Eden Rafshoon

Emily Malino Scheuer*

Lady Sheinwald

Mrs. Louis Sullivan

Daniel W. Toohey*

Sarah Valente

Lady Westmacott

Lady Wright

CURRENT AS OF NOVEMBER 19, 2021

*Deceased

†Honorary



SUPPORT

We gratefully acknowledge the following donors that have supported the work of the theatre over the last 12 months. *This list is current as of November 10, 2021.*

\$100,000 and Above



DC COMMISSION ON THE ARTS & HUMANITIES



- Anonymous
- Beech Street Foundation ^{BA T}
- Bridge Fund
- Alka and Sudhakar Kesavan ^T
- Michael R. Klein and
Joan I. Fabry ^{BA T}
- The Robert P. and Arlene R.
Kogod Family Foundation
- Jacqueline B. Mars
- The National Capital Arts and
Cultural Affairs Program/U.S.
Commission of Fine Arts
- Mr. Michael Paese, Esq ^T
- Toni A. Ritzenberg*
- Robert H. Smith Family
Foundation
- Suzanne and Glenn Youngkin ^T

\$50,000 to \$99,999



FOUNDATION FOR CIVIC ENGAGEMENT

- Anonymous
- Paul M. Angell Family
Foundation
- Anita M. Antenucci ^T
- The Morris and Gwendolyn
Cafritz Foundation
- Dr. Mark Epstein and
Amoretta Hoerber ^T
- The Erkiletian Family
Foundation
- Abbe Lowell and
Molly Meegan ^{BA T}



Michael and Maureen
McMurphy and the Patrick
Michael McMurphy Memorial
Foundation^T

Share Fund

The Shubert Foundation

Leila and Mickey Straus
Family Foundation

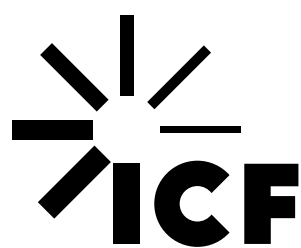
Mr. and Ms. Antoine Van
Agtmael

\$25,000 to \$49,999



Stephen and Toni Allis
Jerrilyn Andrews and
Don Hesse^{ACA}

Michael Bahar and
Hannah Yelland^{BA T}



Carol and Landon Butler^T

Bonnie and Louis Cohen

Nichole Francis Reynolds and
Fred Reynolds III^T



Sue and Les Goldman



David and Jean Grier^T

John and Meg Hauge

Ms. Emily A. Lenzner^T



Kendall Lott^T

Bernard and Mary McKay^T

Dr. Michelle McMurry-Heath
and Dr. Sebastian Heath^T



Michelle Quest and Tim Gillis^T

Vincent Roberti^T

Stephen and Lisa Ryan^{BA T}

Mary Streett^T

Mark Tushnet and
Elizabeth Alexander

Rob and Robin Wilder
and the Duane Wilder
Foundation^T



\$10,000 to \$24,999

Anonymous (3)

Nick and Marla Allard ^{BA T}

Altria Group

The Theodore H. Barth
Foundation

Sheila and Kenneth Berman ^{BA}

Capital One

CJM Foundation

The Dallas Morse Coors
Foundation for the
Performing Arts

Jeffrey P. Cunard ^{ACA BA}

Kay Kendall and Jack Davies

DowntownDC

The Max and Victoria Dreyfus
Foundation

E. and B. Family Trust

Mr. and Mrs. Robert Falb

Dr. Julie M. Feinsilver ^{1616 ACA}

Arthur and Shirley
Fergenson ^{ACA}

Denise Gwyn Ferguson

James and Elizabeth
Glassman ^T

Greene-Milstein Family
Foundation

The Harman Cain Family
Foundation ^T

Houlihan Lokey

Mike and Gina House ^{BA}

The International Union of
Bricklayers and Allied
Craftworkers

Jerry and Isabel Jasinowski

JM Zell Partners, LTD

Ms. Elaine Economides
Joost ¹⁶¹⁶

K&L Gates LLP

Irene and Lou Katz

Jody Katz and Jeffrey Gibbs ^{BA}

Helen Kenney AMB

The Lady Bountiful Fund

Marcel C. LaFollette and
Jeffrey K. Stine ^{1616 ACA}

Jacob and Charlotte
Lehrman Foundation

Myron Lehtman

Gail and Jeff MacKinnon ^T

Mary V. Mochary

Ramona and John Mockoviak ^T

The Morningstar Foundation

Melissa Moss and
Jonathan Silver ^T

Motion Picture Association

Madeline Nelson

Nissan North America

Jean Perin

The John and Marcia Price
Family Foundation

Gerri and Murray*
Rottenberg ¹⁶¹⁶

Pauline A. Schneider ^{ACA BA T}

Judi Seiden ^{AMB}

Robert and Phoebe
Sharkey ^{AMB}

June Silverberg

Fredda Sparks and
Kent Montavon

Ed Taniguchi

Venable LLP

ViacomCBS

Patricia and David Vos
Foundation

John and Gina Wasson



Carolyn L. Wheeler ^{BA}
Lynn and Jonathan Yarowsky
Judy and Leo Zickler

\$5,000 to \$9,999

Anonymous (3)
ABM Industries
Aflac
Americans for Tax Reform
Foundation
Tony Anderson and Kevin Lorei
Stephen P. Anthony ^{BA}
Keith and Celia Arnaud
Bank of America
Ms. Kyle Z. Bell and
Mr. Alan G.R. Bell
Barbara Bennett
Christine and David Bernick
Peter Bieger and
Demian Gaiteri
Robert Crawford Carlson
Audrey Chang and
Michael Vernick
Judge Joan Churchill ^{BA}
Clark Construction Group, LLC
Richard H. Cleva and
Madonna K. Starr ^{BA}
Linda and John Cogdill
Mary Cole ^{AMB}
Neil A. Corkery
C. Maury Devine
Dimick Foundation
Gloria Dittus
Shawn M. Donnelley
Marietta Ethier ^{BA}
James A. Feldman and
Natalie Wexler

Leo Fisher and Sue Duncan
Anne and Burton Fishman ^{BA}
Barbara G. Fleischman
Barry and Marie Fleishman
Paige Franklin and
David Pancost ^{BA}
Tim and Susan Gibson ^{ACA AMB}
David M. Goldberg
Lee Goodwin and
Linda Schwartzstein
John E. Graves RIA and
Hanh Phan
Lucia* and Woolf Gross
Susan Haight
Robert and Margaret Hazen ¹⁶¹⁶
Jennifer Holmes
Mark and Carol Hyman Fund
Maxine Isaacs
Scott KaufmannT
Thomas and Bridget Kluwin
Barry Kropf
Susi and Eric Larsen
Bill And Molly Lynch
Heidi and Bill Maloni
Dan and Susan Mareck
Mr. and Mrs. Gregory May
Mr. Jim McKenzie
Hilary B. Miller and
Dr. Katherine N. Bent ^{BA}
Rita T. Mullin
Theodore B. Olson and
Lady Booth Olson ^{BA}
Pacific Gas and Electric
Company
Karishma and Jonathan Page
Carol Parker



Scott Pearson and
Diana Farrell ^{BA}
Mr. and Mrs. Carl Pfeiffer
Carter Phillips and
Sue Henry ^{BA}
Porterfield, Fettig & Sears, LLC
The Nora Roberts Foundation
Mary and Fernando Rondon
Mr. Albert C. Schneider and
Ms. Catherine L. Heron
In Memory of Betty F. Shepard
Linda and Stanley Sher
Clarice Smith
Estate of Marshall C. Spatz ¹⁶¹⁶
William Stein and
Victoria Griffiths ^{BA}
Lawranne Stewart and
Mark Kantor
Story Partners
Mr. and Mrs. David Tate
Peter Threadgill
Sandy and Jon Willen ^{BA}
WilmerHale
Alan and Irene Wurtzel
Chris and Carol Yoder

\$3,000 to \$4,999

Anonymous (4)
Bill and Sunny Alsup
Mr. Decker Anstrom and
Ms. Sherron Hiemstra
AT&T Services, Inc.
Drs. Hilda and William O. Bank
Carmela and James Bell
Dr. Donna W. Blake and
Mr. Bruce E. Eckstein
Bob, Kathy and Lauren ^{BA}

Ms. Gretchen S. Bolton
Dr. Bill and Evelyn Braithwaite
Dawn and James Causey
Neil and Marcy Cohen, Thea
Cohen, and Dave Yellin
Marcy and Ryan Compton
Jeff and Jacky Copeland
Ms. Carol Danko
Catherine B. Elwell ^{ACA}
Burton Gerber ¹⁶¹⁶
Alisa M. Goldstein and
Lee Blank
Lisa Grosh and
Donald Names ^{BA}
Nicole Alfandre Halbreiner
Frona Hall
Elizabeth Hilder and
Randy Smith
Linda Lurie Hirsch
Lois Howlin
James and Marissa Huttinger
Glen Johnson
Michael Kades and
Mary Giovagnoli
Belinda M. Kane
Mr. Richard Kasten
Joe and Joanne Kelly
Mary Hughes Knox
Sara and Stephen Kraskin ^{AMB}
Sanjiv Kumar and
Mansoor Rashid
Marjorie and John Lewis
Janet and Steven Magel
The McGwin/Bent Family ^{BA}
Jane and Paul Molloy
Mr. Melvin Mosley Jr and
Mrs. Maryam Ulomi



Pershing Advisor Solutions,
LLC
Julie and Bruce Press
Colonel Terry C. Quist ^{BA}
Steven and Anne Reed
Molly and Joe Reynolds ^{BA}
Margaret Rice and Bill Sette
Julie and David Sande
Andrew L. Sandler
Carl and Elizabeth Seastrum
Ed and Andy Smith
John and Eleanor Spoor
Nicole Perry and Andrew Stifler
Alice W. Thomas ¹⁶¹⁶
Laura and Paul Weidenfeld ^{BA}
Mrs. Margot Zimmerman

\$1,800 to \$2,999

Anonymous (11)
Reggie and Dharini Aggarwal
Dean Amel and Terry Savela
Steven Anzalone ^{BA}
Nancy and Dan Balz
Anita Dunn and Bob Bauer
Ms. Deborah B. Baum ^{BA}
Carol Benedict and Paul Ashin
Dr. James and
Ms. Beth Bernhardt
Sue E. Berryman
Darwin B. Bingham
Mr. and Mrs. John H. Birdsall
Vaughn and Marian Bishop
Bloomberg LP
James Blum
Constance Bohon, MD
Ronald Bottomly
Michael A. Boyd

The Honorable Susan G.
Braden and Thomas M.
Susman
James D. and Dr. Chris H.
Bridgeman
The Brueggeman Family
Candice C. Bryant
The Reynolds-Burd Family
Charitable Fund ^{BA}
Mr. Michael Butterfield and
Ms. Hallee Morgan
Capitol Counsel LLC
Cheryl and Matthew Chalifoux
Ellen MacNeille Charles
Virginia Coe and
Michael Garland
Mr. and Mrs. Anthony C. Collins
Mary Combs
Greg and Karen Cooke ^{BA}
William C. and Sandra C. Davis
Matthew and Mike Dazé
Charles Delmar Foundation
Dr. Marjorie Deutsch and
John Broadbent
Lorraine S. Dreyfuss Theatre
Education Fund
Nina Laserson Dunn and
Eric C. Rose ^{BA}
Mark and Laura Duvall
Fynnette Eaton and
James E. Miller
Emily and Michael Eig
Raymond S. Eresman and
Diana E. Garcia
Ernst & Young LLP
Mr. Cary Fuller
Dr. Laura J. George
JoAnne Glisson



Angela and Dan Goelzer
Michael S Gold MD and
Ellen Gold ^{BA}
Bill Swedish and Linda Griggs
Bonnie Hammerschlag
Kenneth G. Hance
Paul and Priscilla Hanley
Richard E. Hardy
Laura Hart
Kevin T. Hennessy ^{AMB BA}
Mary Ellen and Richard
Hibey ^{BA}
F. Lynn Holec ¹⁶¹⁶
Insured Retirement Institute
Mary Frances Jetton
Birdie Johnson
John Edward Johnson
Daniel F. Katz ^{BA}
Ms. Melinda Kimble
Stephen and Mary Sue Kitchen
Tom and Clare Klanderman
David A. Klaus
Dana and Ray Koch
Mr. Masami Kojima
David A. Lamdin
L. L. Lanam
Robert L. Larke
Prue Larocca
Diane and Edward Lazarus
Richard Levi and Susan Perry
Sharon and Steven
Lieberman ^{BA}
Nancy and Dan Longo
James and Barbara Loots ^{BA}
Susan Luse In Memory
of Eric Luse
Amanda Machen

Mary M. McCue ^{AMB}
Diane Compagno Miller
LTC Dee Dodson Morris, Esq. ^{BA}
Michael and Lissa Murphy
Terence R. Murphy O.B.E. and
Patricia Sherman Murphy
Carl and Undine Nash ^{BA}
National Association
of Realtors
National Constitution Center
National Multifamily
Housing Council
Don Neal
Louisa and William Newlin
Beth Nolan and Charles Wright
Mike Haungs in Memory of
John L. Jacobus ^{BA}
Pelta-Pauls Family ^{BA}
Posner-Wallace Foundation
Pat Lark and Lutz Prager
Sheldon Pratt
Mrs. Eden Rafshoon
Lloyd and Claudia
Randolph ^{1616 BA}
Wendy and John Daniel Reaves
Phillip Reiman and Leslie Binns
Rock Central LLC
Steven M. Rosenberg and
Stewart C. Low III
Steve and Diane Rothman ^{AMB}
Allan Sacks and Barbara Taff
Ann Schwartz and David Silver
James and Stephanie Scobey
Richard E. Scott
Carol Shivers
Patricia L. Sims, Esq. and
David M. Sims, Esq.



John and Charlotte Smutko
Lynne M. Stephens and
Kenneth Larson
Jane Lyons and Mark Sucher
Judi and Richard Sugarman
Susan and Brian Sullam
Bobbi and Ralph Terkowitz
James and Cynthia Tuite
Dr. Kazuko Uchimura
Tessa van der Willigen and
Jonathan Walters
Verizon Foundation
Mr. Steve Verna
Mr. and Mrs. John Vogel ^{BA}
Ralph Voltmer and
Tracy Davis ^{BA}
M.E. Wagner
Sonia and Dale West
Laura Willumsen
Deborah and David Yaffe ^{BA}
Mr. and Mrs. Irving Yoskowitz

\$1,200 to \$1,799

Anonymous (4)
Mr. and Mrs. Aliani
Jerome Andersen and
June Hajjar
Richard and Rosemarie
Andreano
Alan Asay and Mary Sturtevant
Dr. Leonard Bachman
Mr. and Mrs. Gregory Ballentine
Michael F. Barrett and
Danielle Beauchamp
R. Joseph Barton and
Tricia Placido
Rev. John P. Beal

Nathan G. Bein
Sue Benson
Mary Ellen Bergeron
Bo Billups ^{1616 AMB}
Ms. Anita Bizzotto
Cathleen E. Blanton
Tim and Gina Bleck
Capt. and Mrs. Christopher
Brown
Ms. Elizabeth Buchbinder
Michael L. Burke and
Carl W. Smith
Ellen Carnevale
Ann Cataldo and Walt Ennaco
Marcie Cohen
Janice King Crawford
Julia and Francis Creighton
John and Valerie Cuddy
Reid Detchon
Becky and Alan Dye
Roberta Ellington
Franc and James Ellzy-O'Malley
Dr. Helene Freeman ¹⁶¹⁶
Carol Galaty and Ken Shuck
Amnon and Sue Golan
Doris Hausser
Ms. Ann M. Kappler and
Mr. Mark E. Herlihy
Melissa Hodgman and
Peter Strzok
David Hofstad
Nancy Garruba and
Chris Hornig
David R Hughes
Rachel R. Jaffe
Steven and Patricia Janssen
Elizabeth Janthey



Pam and Kim Jaske
Eric and Heather Kadel ^{BA}
Mark Kearney
Joel and Mary Keiler
Thomas R. and Laurie S. Kelly
Frank Kendall and
Beth Halpern
Mr. and Mrs. Jeffrey Kohler
Rob Layden and Nancy Chabot
Maryellen Trautman and
Darrell Lemke
Freddi Lipstein and
Scott Richard Berg ^{1616 AMB BA}
Shirley Loo ¹⁶¹⁶
Timothy Madigan
David and Martha Martin
The Mather
Iris and Larry Miller
Linda and Chuck Morefield
Kristine Morris
Mr. and Mrs. Timothy P.
Mulligan
Edward Murphy Esq
Donald and Lynne Myers
Denise M. Neary
Philip Nelson and Anne Parten
Marina Ottaway
Mr. and Mrs. P. David Pappert
Mr. Joseph M. Perta
Ms. Marie J. Ritzo
Maria and Mark Ross
Lynn N. Rothberg
Mr. and Mrs. Stephen B.
Sanborn
Charles B. Saunders, Jr.
Jennifer M. Schlener-Thomas

Andrew Shipley Elaine and
English Showalter
Sally S. Simms
Steve and Diane Sockwell
Elizabeth and George Stevens
Pedro Taborga
Sylvia Toone and James Baxter
Diana M.L. Tucker
Lyman G. Van Nostrand
C. Wakefield Martin and
Paula S. Thiede
Amy Weinberg and
Norbert Hornstein
The Honorable and Mrs. Dov S.
Zakheim

\$600 to \$1,199

Anonymous (17)
Lynne and David Abney
Vickie and David Adamson
John Allen
Bill and Sue Alterman
Lucia Backer
Bill Ballhaus and Darrin Mollett
Dan and Linda Bartlett
Julianne Beall
James A. Belson
Kathleen Bergin
Mr. and Mrs. Robert C. Bernius
Barbara Berrie
Donald and Carol Bobby
Jennifer Boulanger and
Bruce Schillo
Ms. Elaine Bousquet
Elizabeth Boyle
Andrea and Jennifer Bullard
Broggini



Sharon P. Brown
Ms. Carol E. Bruce, Esq. ^{BA}
Harold R. Bucholtz
Rebecca J. Buckner
Mr. James Bumgardner
Susan and Dixon Butler
Butler's Pantry NC
Sarah Callahan
Robert Campbell and
Mary Schellinger
Carol Capuco
Patrick and Katharine Carney
Nicholas Carrera
Ms. Sharon Carruth
Thomas and Robin Clarke
Tasha Cole
JoEllen and Michael Collins
Michael Cook
Jovana Cooke
Robert W. Cover
Lady Elinor Crane and
Sir Peter Crane
Katheryn L. Cranford
Ronald and Jessica Dabrowski
Anjanette M. Daigle
Mr. and Mrs. Mark Darnell
Deanna Dawson
Alexandra De Borchgrave
James A. Decker
Joseph Dervay
Mr. Martin R. Desjardins Esq
E.R. Dolly Dieter
Alan and Susan Dranitzke
Sue and George Driesen ^{BA}
Dutch and Brenda Dunham
David Dunn

Stephen and Magda Eccles
Stuart Eizenstat
Dan and Nancy Ellis
Ellen Epstein and Will Guthrie
Sarah G. Epstein and
Donald A. Collins
Keith Ervin
Kevin M. Fee
Marc and Anne Feinberg
Christine Fisher and
Oscar Goldfarb
Tracy Fisher
Robert and Carole
Fontenrose ^{BA}
Nina Fout
Catherine Fox and John Didier
David G. Freeman
Mr. Lawrence Friedman
Mr. and Mrs. Davis R.
Gamble, Jr.
Mr. Stephen Gambrill
Natwar Gandhi
Lewrene Glaser
Denise Scott Glassman
Anne-Marie Glynn
Adam Goldberg
Greer and Gerald Goldman
Jinny and Michael Goldstein
Mr. and Ms. Hal Gordon
Ms. Patricia D. Graham
Patricia Gray ^{ACA}
Marla Grossman
Mary C. Guibert
Gail J. Gulliksen
Tom Gusdorff and Ed Dennison
Pamela Gwaltney
Ms. Joan Haffey



Patricia Haigh In Memory of
Ambassador Craig G.
Dunkerley

Jack E. Hairston Jr.

Dr. Sara Hale Henry and
Mr. Austin Henry

Newman T. Halvorson

CDR Lars Hanson and
RADM Rosanne Levitre

Agnes Hardison

Gerald T. Harrington

Dr. Miriam Harrington

Betsy Ann Harris

Frank and Lisa Hatheway

Mr. and Mrs. Frederic Hill

John W. Hill

Judge Christopher Holleman

Judy Honig and Stephen Robb

Embry and Joe Howell

Charlotte HrnCir

Joseph and Nada Icenogle

Mr. Kurt Jaeger

Margaret C. Jones

Arthur M. Katz and
Sima Osdoby ¹⁶¹⁶

Ashok and Stuti Kaveeshwar

Mr. and Mrs. Robert Keatley

Robert L. Kimmins

Ms, Renee Klish ¹⁶¹⁶

Kathleen Knepper ^{BA}

Sara Koury

Karen E. Krueger

Mr. William Lalik

Elizabeth Lee

Stephen Leisge

Marion Ein Lewin

Carol A. Lewis

Mr. Richard Wayne Ley

Jim and Sharon Lowe

Linda L. Lum

Scott and Ellen Lutrey

Adrian Luxmoore

Captain L. F. Manning USN (ret)

Yardena Mansoor

Beth Marcus

John and Liza Marshall

Ron and Terry Martin-Minnich

Peter Mathers and
Bonnie Beavers

Malcolm Matheson and
Nancy West

Mr. James A. Mauro

Catherine McClave

Anna Therese McGowan

Jon and Belinda McKenzie

David and Sarah McMeans

Dennis Mehiel

Ms. Beverly Melani and
Mr. Bruce Walker

Susan and Harry Meyers

Antoinette Miller

Stephen and Nicole Minnick

Daniel Mintz and
Ellen Elow-Mintz

Sherry Mones Nevins

Laurel Montgomery

Hazel C. Moore

Livezey and John More

Stanley and Marianne Myles ¹⁶¹⁶

Mr. and Mrs. John and
Karin Old

Mr. John Oliver

Mr. Alex Orfinger

Oxford Properties Group



C. Lee Page III
Rodney and Deborah Page
Stan Peabody
Laurence Pearl and
Anne Womeldorf
Trudy and Gary Peterson
Victoria Phipps
Beth Pile
Geraldine Fogel Pilzer
Elizabeth Piotrowski
Stephen and Rutha Piper
Trevor Potter and
Dana Westring
Laurel Radow
In Memory of Richard J.
Ricard, Jr.
Gene and Shirley Rosenfeld
Joan Rosenthal
Barb and David Roux
Ms. Joan Rudel
Ms. Fath Ruffins
Ron and Sharon Salluzzo
Michael Schecter
William Schilling
Linda Christine Schmidt
Gren Schoch
Don G. Scroggin and
Julie L. Williams
Mr. William Senn
Robert Shapiro
Donna Shelton and Frank Doe
Patrick Shooltz
Donald M. Simonds
Michael R. Smith and
Holly A. Larisch
Sony Pictures Entertainment
Cecile Srodes

Ms. Joanna Sturm
Annie Sylvain
Payal and Chandra Tak
Nancy Tartt
John M. Taylor
Terry Theologides
Larry and Cathy Thompson
Steven and Alison Thompson
Kathryn and Jonathan Towne
Alice Tracy
Michael Tubbs
Al and Jackie Tucker
Dr. Ann Tunstall and
M. John Hasnas
Glenn Tuttle
Barbara Ann Uhler
John K. Vestal
Boris Veytsman
Jack and Ruth Ellen
Wennersten
Patricia White
Gerry Widdicombe
Elizabeth Wilke
Ann Williams
Jean F. Williams
Anne and Tom Wotring
Mr. Robert and
Ms. Emily Wurtz
John and Bucci Zeugner

\$300 to \$599
Anonymous (35)
Ernest and Dianne Abruzzo
Actors' Equity Foundation, Inc.
Donald Adams and
Ellen Maland



Mark D. Agrast and
David M. Hollis
Gloria D. Allen
Tonia Anderson
Mr. Edward Angel, PhD
Judy Areen and
Richard Cooper
Ms. Frances Armstrong
Joanne and Henry Asbill
Catherine Ayers-Rigsby
Dr. James H. Babcock and
Mrs. Carol Ann Babcock
Dr. Lawrence Ballon and
Lee Woodman
Jonathan H. Barber
Linna Barnes and Chris Mixter
Joan Barron and Paul Lang
Rosemary Beavers
Mr. Jeffrey Berger and
Mrs. Diane Arkin
Drs. James and
Barbara Bershon
Sarah Billington
Mary Josie and
Bruce Blanchard
Mr. Robert L. Bleimann and
Dr. May Chin
Pamela and Ivan Blumberg
Thomas Booth
Cindy and Dennis Brack
Lynn Brennan
Andrew and Shellie Bressler
Smith Brittingham
Anne E. Broker
Henry J. Brothers II
Betti Brown and Bob Ramsey
Lisa Brown

Buckley/Palmore/Hind Family
Ms. Judy Buelow
Colonel and Mrs. Lance J.
Burton
Blain and Peggy Butner
Ms. Ellen Cades
Kimberly A. Campbell
James M. Carr
Patricia and Vincent Carretta
Tommie Champ
Wallace Chandler
Mr. Edward Chmielowski
Dr. and Mrs. Purnell Choppin
Ray Clark, Rhonda Starkey
and Alex
William Cleveland
Bruce A. Cohen
Mr. Timothy Cole and
Ms. Kathy Galloway
Susan and Robert Collender
John and Sheila Compton
Brian and Lucy Conboy
Carol Cooke
Alan T. Crane
Ms. Elizabeth Crompton
Isabelle D. and John L.
Cummings
Suzanne and Gregory Curt
Ms. Donna Dana
Mr. Gerald P. Dargis
Capt. Joan E. Darrah and
Lynne Kennedy ¹⁶¹⁶
Dr. Nathan Davis, M.D.
Donna J. Dean and
John L. Meyer
Robyn Des Roches
Beverly Dickerson



Mary Dickie and Leslie Dach
Yin'ying Djuh
Carol Doherty
Mr. Jeffrey H. Domber and
Ms. Betty Bird
Dorchester Towers and
Dorchester Apts on Columbia
Pike in Arlington
Lily Dorment
Don Douglas and
Carolyn Weil
Maureen B. Dowd
John Driscoll
Alison Drucker and
Tom Holzman
Sharon Dubrow
Erica and Alan Edelman
Dr. Stephen Ehrmann
Mr. and Mrs. Kenneth A.
Eisenhardt
Colleen Ellis
Mr. William Erdmann
Mr. and Mrs. John S. Eustice
Carissa Faroughi
Dorothy E. Fickenscher
Mrs. Deborah Fisk
Trudy Luria Fleisher
Barbara Formoso
Mr. and Mrs. Terence Fortune
Henry J. Fox Charitable Fund
Jim Fraser
Douglas R. Freeman
Laurel Frost
JoAnn and Jack Fruchtman
Jean Fruci
Ms. Patricia E. Gallagher and
Mr. Stephen Greenberg

Mohra Govankar
Caroline and Alan Gelb
Dennis Gerrity
Jannes Gibson
In Memory of
Ruth Bader Ginsburg
Gigi and Jeff Godwin
Mr. Charles B. Goldfarb
David Goldston
Richard and Joyce Gordon
The Greczmiel Family
Eldon and Emily Greenberg
Kimberly Gross
Margaret S. Grotte
Michael Guss and
Trish Lindt-Guss
Jerry Haggin
Richard and Michelle Hamecs
Michael Hannan
Judith Hautala
Rachel Hecht
Mr. James Heegeman
Constance and Richard
Heitmeyer
Peggy O. Heller
Margaret Hennessey
Robert J. Herbert
Peter Hickling
Jim Hill and Elze Adams
Dorsey Hiltenbrand
Frederick S. Hird
Stanley and Vicki Hodziewich
Laura L. Hoffman and
David E. Colin
Dr. Kevin Hogan
Eric and Susan Holdsworth
Cheryl Hollins



Lauren and Glen Howard
Mr. and Mrs. Timothy Howard
Richard and Lucy Huffman
Michael Hughes and
Linda Wiessler-Hughes
Drs. Carl and Joyce Hunt
Carol Ireland
Will, Amanda and Fran Irwin
Patricia Jackman and
Stephen L. John
Benita Ward Jarrett
Edward and Victoria Jaycox
Patricia Jayne and Chris Barr
Susan Jenson
W. Luther Jett
Bary Johnson
Dr. Bethany S. Jones
Garett Jones
Mr. Robert E. Jordan* ^{BA}
Maryanne and David Kane
Anne and David Kendall ^{BA}
Mr. Eugene Kenney
Carole Kennon-Eaton
Sylvia Kihara
Mrs. William Kingsbury
Elisa and Michael Kirby
Lydia and Ian Kline
Dr. Randall Knack and
Misty Knack ¹⁶¹⁶
In Memory of Robert Knouss
Tom and Kathy Knox
Kristin and Dave Koehler
Elizabeth Koprowski in Memory
of Matteson Scott
Tija Krumins
Cynthia Krus
Anne E. Lamond

Mr. and Mrs. Joseph Hagedorn
Lang, Jr.
Ms. Debbie Lansford
L. L. Lawson
Ms. Margaret Lenzner
Herb and Dianne Lerner
Michael and Bianca Levy
Barbara Liggett and
Augustine Matson
Bethany and Joseph Lilly
Marcia Litwack
Mr. and Mrs. Kenneth Lorber
Dorrit Lowsen
Ann Lung
Ms. Margot E. Machol and
Mr. Mark C. Bisnow
Samantha MacInnis
Duncan Mackinnon
Cathy MacNeil-Hollinger and
Mark Hollinger
Peg Mangan
Robert and Ida May Mantel
Dr. Devra C Marcus and
Michael J. Horowitz
Catherine Marich
John Marshall
Stephanie Martin
Winton E. Matthews
Louis T. Mazawey
Ms. Nicole A. Mazur
Matt and Peggy McCarty
Anne and Kevin McCormally
Conor McGovern
Mr. and Mrs. Thomas
McLarty, III
In Memory of Patrick Michael
McMurphy and Marilyn
Shockey



Jonathan Medalia
Dr. Barbara S. Meierhoefer
Martha Mica
Joan Migliori
Brian Miller
Eleanor C. Miller
Lisa Miller
Charles Mills
Ryland and Mary L. Mitchell
Jessine Monaghan
Ms. Jane R. Passman
Mr. Steven J. Mufson and
Ms. Agnes Tabah
Elisabeth Murawski
Mr. and Mrs. Robert W.
Mustain, Jr.
Winkle W. Nemeth
Elizabeth Newhouse
Catherine and David Nielsen
Craig T. Normand
Geraldine Novak
Georgia Nugent
Mr. and Mrs. Lawrence
O'Connor
Barbara O'Grady and
Stephen Moseley
Fanchon A. Oleson
Maria Olivieri
Amy N. Orr
Ms. Ruth Oyen
Allison Paranka
Mr. Jonathan Paul
Kristiane Pellegrino
Marlene and Ken Pennington
Mr. Jed M. Perry
Stanley Pierre-Louis
Col. and Mrs. Scott Pinckney

Dr. Judith Plotz and
Dr. Paul Plotz
Mr. and Mrs. John E. Polger
Diane and Arnold Polinger
Ann Pope
Mr. and Mrs. Joseph A. Presel
Diana Preston
Maria Proestou and
Savana Hadjipanteli
Mr. William Puppa
Dulcie Ramdeo
Mr. Sheppard Ranbom
Jeffrey Rathke and
Maria Meyler
Lynette Rawlings
Mr. and Mrs. Thomas J.
Reckford
Peter S. Reichertz
Joyce Schwartz Reitzel
Sharon Rennert
John and Deb Roberts
Bobby and Cassandra
Robinson
CAPT and Mrs. Evan D.
Robinson, USN (Ret)
Nick Robinson
Bella Rosenberg
Dr. Robert and Marcia
Rosenberg
Bud and Peggy Rubin
Edward and Laura Rubinoff
Alexander Ryan
Margaret L. Ryan
Betty H. Sams
Sandall Family
Elizabeth Lewis and
Thomas Saunders



Chris Savage and Lisa Hemmer
Raymond Scalettar
Catherine Scavello
Alan and Geraldine Schechter
Sharon Schoeller and
Edward Saltzberg
Olaf Schoenrich
Steve and Rhonda Schonberg
Eugene and Alice Schreiber
Philanthropic Fund
Joyce and Richard Schwartz
Kathleen R. Scott in Memory of
Matteson M. Scott
Ms. Iona Sebastian
Timothy Semple
Kathy Sheehan
John and Roma Sherman
Rebecca Shiffer
Judy Shulman
Mark and Joan Siegel
Mary Sies and
Christopher Stark
H. James and Judy Silva
Mark W. Smith
Nick and Robbie Snow
Amy L Snyder
Catherine and Robert Solomon
Randall Speck and
Samantha Nolan
James and Sue Sprague
Maria Stamoulas and
Basil Koudelis
Mary E. Stanley
Catherine Stevens
Drs. Linda and Robert Stillman
Dorothy and Donald Stone
Lawrence Stone

Maureen Sullivan
Alisha Sunde
Jimmy Swart, PhD
John and Meg Symington
Peter and Ann Tanous
Ramon and Ruby Tate
Elizabeth A. Taylor ¹⁶¹⁶
Angela Thomas
Mrs. Eunice Thomas
Grant P. and Sharon R.
Thompson
Jessica and Henry Townsend
Dr. Arina van Breda
Ray and Barbara Vanderbilt
Carole and John Varela
Elinor Vaughter ^{ACA}
Christine Villa
Bruce and Debby Vivari
Christian Von Hassell
Thomas Walko
George Walser
Chris and Karen Warack
Dorothy Watkiss
Mr. Charles Wayne
Ms. Judith Weintraub
Jeffrey Weiss and
Julianna Glover Weiss
Inge Williams
Wayne and Virginia Williams
Scott and Lucy Wilson
Susan Wilson
Mary J. Wilson-Bilik Esq
Linda Winslow
Mr. Philip D. Winters
Neville Withington and
Kerry Kingham
Robert and Patricia Wittie



Anita Woehler
Mr. and Mrs. James Wofford
Betsy L. Wolf
Andrea Wood
Mr. Stephen Wood
John Mingus and
Carolyn Yocom
Victor Zitel

**Additional Members of
the Society of 1616**

Anonymous
Helen Alexander and
Roland Weiss
Dr. Sheryl D. Baldwin
Mr. John Ball
Mr. John Cahill
Lorraine E. Chickering
Anne Coventry
Zelda Fichandler*
Donald Flanders
Dr. Helene Freeman
Peter and Linda Parke
Gallagher*
In Memory of Angelique Glass
Dr. Olga Gilloegly*
Ms. Claudia J. Greer
Michael Kahn
Lt. Col. and Mrs. William K.
Konze
Dr. Richard M. Krause*
Estate of Gwenneth Lavin*
Mrs. R. Robert Linowes
Dorothy and Bill McSweeny
Marian Mlay
Judith E. Moore
Susana and Robert Morassi*

Mr. and Mrs. Richard J. Park
Suzy Platt*
Jennie Rose
Henry J. Schalizki*
Anne and Daniel Toohey*

In Kind

Asia Nine
Constellation Brands, Inc.
The DC Noble
Denson Liquor Bar
Flight Wine Bar
The Hill Newspaper
matchbox penn quarter
Succotash PRIME
Teaism
Think Food Group
WhyHotel

Matching Gifts

Bank of America
Bloomberg LP
Dominion Energy
GEICO
Gladstone Capital Corporation
JPMorgan Chase & Co.
Lockheed Martin Corporation
Morgan Stanley
TD Ameritrade
Wilmington Trust



In addition to those listed above, Shakespeare Theatre Company thanks the following donors who have made multi-year commitments to ensure the creation of classical theatre in the nation's capital.

Anonymous (3)
 Stephen and Toni Allis
 Anita M. Antenucci ^T
 Beech Street Foundation
 Carol and Landon Butler ^T
 The Morris and Gwendolyn
 Cafritz Foundation
 Annie Carey and
 Jonathan Sherman ^T
 Events DC
 Mr. and Mrs. Robert Falb
 Mary W. Graham
 Steve* and Judy Hopkins
 Alka and Sudhakar Kesavan ^T

Michael R. Klein and
 Joan I. Fabry ^{BA T}
 Houlihan Lokey
 Ms. Emily A. Lenzner ^T
 Abbe Lowell and
 Molly Meegan ^{BA T}
 Bernard and Mary McKay ^T
 Merrill Family Foundation
 Melissa Moss and
 Jonathan Silver
 Roger Sant and Doris Matsui
 Share Fund
 Rob and Robin Wilder
 and the Duane Wilder
 Foundation ^T

Official 2021/22 Sponsors:

Airline



Costume and Garment



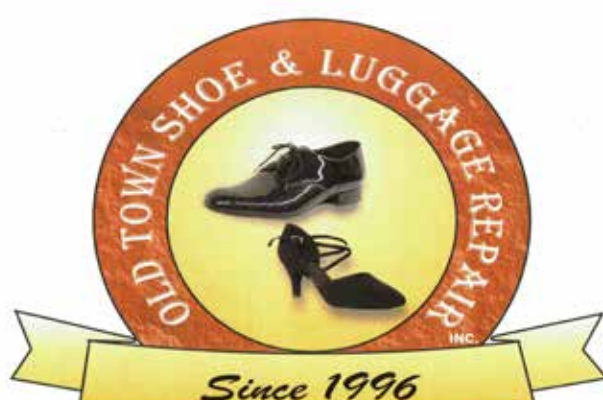
Housing



Physical Therapy



Shoe Repair



824 King St Alexandria, VA 22314
 Phone: (703) 299-0655
 Fax: (703) 299-0795



Key to Symbols

- 1616 Members of the Society of 1616, the Theatre's planned giving society
- ACA Supporters of the Academy for Classical Acting
- AMB Ambassadors of the Theatre, generous donors who help develop and enhance our patrons' relationship with the Theatre. To join, please contact Sam Abney at 202.547.3230 ext. 2325.
- BA Members of the Bard Association, dedicated supporters of the Theatre who are members of the legal community. To join, please contact BardAssociation@ShakespeareTheatre.org
- T Members of the Board of Trustees
- * Deceased

Every effort has been made to ensure that this list is accurate. If your name is misspelled or omitted, please accept our apologies and inform Member Services at 202.547.1122, option 3, or email SupportSTC@ShakespeareTheatre.org

STC STAFF



Artistic Director: Simon Godwin

Executive Director: Chris Jennings

Executive Assistant: Adam Lemos

ARTISTIC

Associate Artistic Director: Alan Paul

Director of Equity and Enrichment:

LeeAnét Noble

Head of Voice and Text: Lisa Beley

Resident Dramaturg: Drew Lichtenberg

Resident Casting Director: Danica Rodriguez

Associate Director: Whitney White

Associate Director-Literary: Soyica Colbert

ADMINISTRATION

Senior Director of Administration: James Roemer

General Manager: Max Schwager

Company Manager: Steven Breiter

Assistant Company Managers: Des'ree Brown,
Nia Burns

Director of Human Resources: Lindsey Morris

Human Resources Administrator: Ryn Weil

Senior Staff Accountant: Marco Dimuzio

Staff Accountant: Robert States

Director of Operations: Timothy Fowler

Facilities Custodian: Jorge Ramos Lima

Custodians: Dennis Fuller, Mirna Guzman,
Wilfredo Guzman

Theatre Facilities Monitors: Milton Garcia,
Odell Ruffin

Director of Information Technology:

Brian McCloskey

Database Administrator: Brian Grundstrom

Systems Administrator: David Harvey

Operations and IT Coordinator: Meg Edyvean



DEVELOPMENT

Senior Director of Development: Laura Willumsen

Director of Donor Relations: Sam Abney

Donor Relations Manager: Olivia Ferrer

Director of Corporate Relations: Abby Lynch

Director of Foundation and Government Relations:

Rachel Greenberg

Development Operations Manager: Sarah Pultz

Development Events Manager: Abigail Winston

Development Coordinator: Cierra Culbertson

MARKETING AND COMMUNICATIONS

Senior Director of Marketing and Communications:

Neal Racioppo

Associate Director of Marketing and Digital

Communications: Gabriel Benghiat

Associate Director of Communications:

Brittany Proudfoot Ginder

Marketing and Communications Coordinator:

Cristina Lopez

Graphic Designer: Daniel Martin-Minnich

Video and Content Creator: Jeffrey Ray

Director of Audience Services: Joy Johnson

Box Office Manager: Sam Hassell

Box Office Sales Associates: Jake Campbell,

Christopher Hunt, Jessica Kaplan,

Andre McBride, Keegan Patterson

Assistant House Managers: Ric Birch,

Anfernee Bryant, Mary Margaret Byrd,

Sara Counts, Aryssa Damron, Darby DeJarnette,

Scott Eubanks, Doug Gold, Pamela Jafari,

Marley Kabin, Lauren Layton, Doreen Paster,

Carmelitta Riley, Marie Riley, James Sims Jr.

Retail and Concessions Manager: Hue Adams III

Retail and Concessions Attendants: Quintin Cary,



Madalaina D'Angelo, Melusyn Foundling,
Nick Gerwitz, Lily Komarow, Ishae McKeever,
Chris Pearson, Elena Robertson, Laura Toth,
Katherine White

ENGAGEMENT AND EDUCATION

**Senior Director of Engagement and Education:
Samantha Wyer Bello**

**Associate Director of Engagement and Education:
Julane Havens**

School Programs Manager: Cassy Rush

Engagement and Education Coordinator:
Raine Ensign

Affiliated Teaching Artists: Laura Artesi,
Tonya Beckman, Renea Brown, Danny Cackley,
Guadalupe Campos, Matthew Castleman,
Dan Crane, Omar D. Cruz, Yonatan Gebeyehu,
Tara Giordano, Francisco Gonzalez, Alicia
Grace, Miranda Hall, Morgan Cherece Hall,
Hannah Hessel Ratner, Claire Inie-Richards,
Naomi Jacobson, Joy Jones, Colleen Kennedy,
Sabrina Mandell, Chelsea Mayo, Brenna
McDonough, Kiernan McGowan, Jack Novak,
Alex Piper, Christopher Michael Richardson,
Melissa Richardson, Nancy Robinette, Maya Shed,
Michael Thomas, Khaleshia Thorpe-Price,
Eliseo Valerio, Justin Weaks, Eva Wilhelm,
Gregory Wooddell, Patricia Woolsey,
Jeffrey Allen Young

THE ACADEMY FOR CLASSICAL ACTING

**Senior Director of the Academy for Classical
Acting: Alec Wild**

Academy for Classical Acting Program Coordinator:
Mallory Miller



Academy Faculty: Moimusa Ahmadu, Lisa Beley,
Acacia Danielson, Christopher Cherry,
Dody DiSanto, Edward Gero, Robb Hunter,
Lisae C. Jordan, Elizabeth Kaye, Floyd King,
LeeAnét Noble, Roberta Stiehm, Craig Wallace,
Matthew Wilson

PRODUCTION

Senior Director of Production: Tom Haygood

Associate Director of Production: Janice Jenson

Production Administrator: Hilary Surface

Resident Production Stage Manager:

Joseph Smelser

Production Assistant: Heather Ogden

Costume Director: Barbara Hicks

Resident Design Assistant: Jeanette Lee Porter

Draper: Randall Exton

First Hand: Sandra Thomas

Stitchers: Michele Ordway, Donna Sachs

Wardrobe Supervisor: Daisy Howard

Technical Director: Kelly Dunnavant

Assistant Technical Director: Chris Stoutjesdyk

Scene Shop Administrator: Charles Cobb

Scenic Carpenters: Justin Carnes, Natalie Jurkowski

Charge Scenic Artist: Sally Glass

Scenic Artist: Molly Hall

Properties Director: Chris Young

Assistant Properties Director: Kimberley E. Cruce

Soft Goods Artisan: Rebecca Williams

Props Artisan: Justin Titley

Master Electrician: Sean R. McCarthy

Associate Master Electrician: Lauren Lee

Electricians: Peter Goldschmidt, Brice Hilburn

Audio/Video and Stage Operations Supervisor:

Gordon Nimmo-Smith



Assistant Audio/Video Supervisor: Marion Ayers

Audio/Video Engineers: Travis Byrne,

James LaDow

Assistant Stage Operations Supervisors:

Robert Garner, Rachel Wolf

Deck Chief: Niki Sears

Run Crew: Craig Gaitling, Andrew Wilkinson



A:



THE ALL NEW MICKEY MOUSE CLUB (AKA MMC), BRITNEY SPEARS, (1993), 1989-94, PHOTO: EVERETT COLLECTION.

The Mickey Mouse Club.

Britney Spears was a Mouseketeer on the *All-New Mickey Mouse Club* (1989–1996), also known as *MMC*, from 1993–1996.