



Nissan Intelligent Mobility moves you one step ahead. In cars that feel like an extension of you, helping you see more and sense more, reacting with you, and sometimes even for you. Nissan Intelligent Mobility is about a better future – moving through life with greater confidence, excitement and connection to the world around you.



2021  
ALTIMA®



<sup>1</sup>World's first production variable compression turbo engine launched by Nissan Motor Co., Ltd. in 2018. <sup>2</sup>Availability of features vary by vehicle model year, model, trim level, packaging, and options. <sup>3</sup>Intelligent All-Wheel Drive cannot prevent collisions or provide enhanced traction in all conditions. Always monitor traffic and weather conditions. <sup>4</sup>Driving is serious business and requires your full attention. If you have to use the connected device while driving, exercise extreme caution at all times so full attention may be given to vehicle operation. <sup>5</sup>ProPILOT Assist cannot prevent collisions. It is the driver's responsibility to be in control of the vehicle at all times. Always monitor traffic conditions and keep both hands on the steering wheel. System operates only when lane markings are detected. Does not function in all weather, traffic, and road conditions. System has limited control capability and the driver may need to steer, brake, or accelerate at any time to maintain safety. See Owner's Manual for safety information. <sup>6</sup>Available feature. <sup>7</sup>Nissan Safety Shield technologies can't prevent all collisions or warn in all situations. See Owner's Manual for important safety information. <sup>8</sup>Automatic Emergency Braking with Pedestrian Detection cannot prevent all collisions and may not provide warning or braking in all conditions. Driver should monitor traffic conditions and brake as needed to prevent collisions. See Owner's Manual for safety information. <sup>9</sup>Rear Automatic Braking cannot prevent all collisions and may not provide warning or braking in all conditions. Driver should always turn and check surroundings before driving and brake as needed to prevent collisions. See Owner's Manual for safety information. <sup>10</sup>Rear Cross Traffic Alert may not detect all vehicles. See Owner's Manual for safety information. <sup>11</sup>Blind Spot Warning cannot prevent collisions and may not detect every object or warn in all situations. Driver should always turn and look before changing lanes. See Owner's Manual for safety information. <sup>12</sup>Lane Departure Warning and Intelligent Lane Intervention operate only when lane markings are able to be detected. See Owner's Manual for safety information. <sup>13</sup>Intelligent Around View® Monitor cannot eliminate blind spots and may not detect every object. Driver should always turn and check surroundings before driving. See Owner's Manual for safety information. <sup>14</sup>Virtual composite 360° view. <sup>15</sup>Available feature shown. Use feature only when safe and legal. Compatible device and service required. Subject to third party service availability. For more information see [NissanUSA.com/connect/legal](http://NissanUSA.com/connect/legal). <sup>16</sup>VC-Turbo™ engine horsepower and torque ratings: 248 hp and 273 lb-ft of torque ratings when using 93-octane fuel; 236 hp and 267 lb-ft of torque ratings when using 87-octane octane fuel. <sup>17</sup>2021 EPA Fuel Economy Estimates 28 City MPG / 39 Highway MPG / 32 Combined MPG for Altima® S FWD; 27 City MPG / 37 Highway MPG / 31 Combined MPG for Altima® SV, SR, SL FWD; 26 City MPG / 36 Highway MPG / 30 Combined MPG for Altima® SV, SL AWD; 25 City MPG / 35 Highway MPG / 29 Combined MPG for Altima® SR, Platinum AWD; 25 City MPG / 34 Highway MPG / 29 Combined MPG for Altima® SR FWD VC-Turbo. Fuel economy estimates based on 87-octane fuel. Actual mileage may vary with driving conditions. Use for comparison only. <sup>18</sup>Extra cost option. <sup>19</sup>Leather appointments. <sup>20</sup>Brake Assist cannot prevent all collisions and may not provide warning or braking in all conditions. Driver should monitor traffic conditions and brake as needed to prevent collisions. See Owner's Manual for safety information. <sup>21</sup>Intelligent Forward Collision Warning cannot prevent collisions. See Owner's Manual for safety information. <sup>22</sup>RearView Monitor may not detect every object and does not eliminate blind spots or warn of moving objects. See Owner's Manual for safety information. <sup>23</sup>Vehicle Dynamic Control cannot prevent collisions due to abrupt steering, carelessness, or dangerous driving techniques. It should remain on when driving, except when freeing the vehicle from mud or snow. See Owner's Manual for safety information. <sup>24</sup>Intelligent Driver Alertness cannot provide a warning in every situation. See Owner's Manual for safety information. <sup>25</sup>Does not detect people or cargo. Always check rear seat before exiting. See Owner's Manual for safety information. <sup>26</sup>State laws may apply. Review before using. <sup>27</sup>Never program while driving. GPS mapping may not be detailed in all areas or reflect current road status. <sup>28</sup>Use the text messaging feature after stopping your vehicle in a safe location. If you have to use the feature while driving, exercise extreme caution at all times so full attention may be given to vehicle operation. Compatible smartphone required. Text rates and/or data usage may apply. <sup>29</sup>Air bags are only a supplemental restraint system. Always wear your seat belt. Rear-facing child restraints should not be placed in the front-passenger's seat. All children 12 and under should ride in the rear seat properly secured in child restraints, booster seats, or seat belts according to their size. Air bags will only inflate in certain accidents. See Owner's Manual for safety information. <sup>30</sup>Tire Pressure Monitoring System is not a substitute for regular tire pressure checks. See Owner's Manual for safety information. <sup>31</sup>Vehicle must be on for the Easy-Fill Tire Alert to operate. <sup>32</sup>Sonar System may not detect every object. Driver should always check surroundings before driving. See Owner's Manual for safety information. <sup>33</sup>Intelligent Trace Control cannot prevent collisions or loss of control. Driver should remain in control of vehicle at all times. See Owner's Manual for safety information. <sup>34</sup>Driving is serious business and requires your full attention. If you have to use the feature while driving, exercise extreme caution at all times so full attention may be given to vehicle operation. <sup>35</sup>Information displayed is dependent on how vehicle is equipped. <sup>36</sup>Traffic Sign Recognition may not detect and read all traffic signs in all conditions. Driver should monitor all traffic signs and obey all traffic laws. See Owner's Manual for details. <sup>37</sup>Genuine Nissan Accessories are covered by Nissan's Limited Warranty on Genuine Nissan Replacement Parts, Genuine NISMO® 5-Tune Parts, and Genuine Nissan Accessories for the longer of 12 months/12,000 miles (whichever occurs first) or the remaining period under the 3-year/36,000-mile (whichever occurs first) Nissan New Vehicle Limited Warranty. Terms and conditions apply. See dealer, Warranty Information Booklet, or [parts.NissanUSA.com](http://parts.NissanUSA.com) for details. <sup>38</sup>Cargo and load capacity limited by weight and distribution. Always secure cargo. <sup>39</sup>FWD models only. <sup>40</sup>AWD models only. <sup>41</sup>Late availability. Expected availability January 2021. <sup>42</sup>Late availability. Expected availability December 2020. <sup>43</sup>Roadside Assistance available for a period of 36 months/36,000 miles from the date the vehicle is delivered to the first retail buyer or otherwise put into use, whichever is earlier. Amazon Alexa is a trademark of Amazon.com, Inc. or its affiliates. Google, Android, Android Auto, YouTube and other marks are trademarks of Google LLC. Google Assistant is not available in certain languages and countries. Apple CarPlay®, Apple Music®, and iPhone® are registered trademarks of Apple, Inc. All rights reserved. iPhone® or other external device not included. Bluetooth® is a registered trademark of Bluetooth SIG, Inc. Bose® is a registered trademark of The Bose Corporation. ChromaFlair® is a trademark of Optical Coating Laboratory, LLC. Facebook® is a registered trademark of Facebook, Inc. HomeLink® is a registered trademark of Gentex Corporation. Siri® and Siri® Eyes Free are registered trademarks of Apple, Inc. The Sirius®, XM®, and SiriusXM® names and all related marks and logos are trademarks of Sirius XM Radio Inc. All other trademarks are the property of their respective owners. Twitter® is a registered trademark of Twitter, Inc. This brochure is intended for general descriptive and informational purposes only. It is subject to change and does not constitute an offer, representation or warranty (express or implied) by Nissan North America, Inc. Interested parties should confirm the accuracy of any information in this brochure as it relates to a vehicle directly with Nissan North America, Inc. before relying on it to make a purchase decision. Nissan North America, Inc. reserves the right to make changes, at any time, without prior notice, in prices, colors, materials, equipment, specifications, and models and to discontinue models or equipment. Due to continuous product development and other pre- and post-production factors, actual vehicle, materials and specifications may vary from this brochure. Some vehicles shown with optional equipment. See the actual vehicle for complete accuracy. Availability and delivery times for particular models or equipment may vary. Specifications, options and accessories may differ in Hawaii, U.S. territories and other countries. For additional information on availability, options or accessories, see your Nissan dealer or contact Nissan North America, Inc. At [NissanUSA.com](http://NissanUSA.com), you'll find virtual product demonstrations, a way to "build your own Nissan," a dealer locator, and more information about key Nissan support services. Or if you'd prefer, call 1-800-NISSAN-3 for answers to specific questions about Altima® or any other Nissan vehicle. The Nissan names, logos, product names, feature names, and slogans are trademarks owned by or licensed to Nissan Motor Co. Ltd. and/or its North American subsidiaries. Other trademarks and trade names are those of their respective owners. **Always wear your seat belt, and please drive responsibly.** ©2020 Nissan North America, Inc. '21 Altima®, 2103201-N-9/20-80M-KSL



Unlock the pure joy of driving. How? With the world's first variable compression turbo engine.<sup>1</sup> A suite of available safety features that can respond to the world around you in real time.<sup>2</sup> Confidence from available Intelligent All-Wheel Drive.<sup>3</sup> And surprising connectivity before you even reach the driver's seat.<sup>4</sup> Nissan Altima.<sup>®</sup> This is tech that changes every part of your drive. This is Nissan Intelligent Mobility.<sup>™</sup>





## ProPILOT Assist

Enjoy the drive even more. With the groundbreaking ProPILOT Assist, your Altima® helps keep you centered in your lane, and following the car ahead at a preset distance. It can even bring your Altima to a full stop based on the highway traffic flow, and can bring you back up to speed when traffic starts moving again.<sup>5, 6</sup>

HELPS KEEP YOU  
CENTERED IN  
GENTLE CURVES

MAINTAINS YOUR  
PRESET SPEED AND  
DISTANCE

CAN EVEN  
COME TO A  
COMPLETE STOP



## Nissan Safety Shield® 360

Nissan Intelligent Mobility is changing how you move forever with technology that makes you feel more connected, confident, and excited.

As part of Nissan Intelligent Mobility, Nissan Safety Shield® 360 includes features that can help you see more, sense more, and can give you an assist when you need it. The following features come standard on every 2021 Nissan Altima SV and above.<sup>2, 7</sup>

Automatic Emergency Braking  
with Pedestrian Detection<sup>8</sup>

Rear Automatic  
Braking<sup>9</sup>

Rear Cross  
Traffic Alert<sup>10</sup>

Blind Spot  
Warning<sup>11</sup>

Lane Departure  
Warning<sup>12</sup>

High Beam  
Assist



## Intelligent Around View® Monitor

Four cameras make parking easy with a virtual composite 360° bird's-eye view of your Altima. You can select from split-screen close-ups of the front, rear, and curbside views for a better look. It also gives you an on-screen heads-up when it detects moving objects near your vehicle. We're looking at you, shopping cart.<sup>6, 13, 14</sup>







### Apple CarPlay® integration

People to see? Places to be? Just ask Siri®. Equipped with Siri® voice control, Apple CarPlay® brings your contacts, favorite messaging apps, Apple Music® playlists, Apple Maps, and more on board to your Altima. Simply plug in your compatible iPhone® and go.<sup>4,15</sup>



### Talk to your Altima with NissanConnect® Services

With available NissanConnect® Services powered by SiriusXM®, you can access your Altima remotely using the NissanConnect® Services Skill for Amazon Alexa or Action for Google Assistant. Start your engine, unlock your doors, and more.<sup>4,15</sup>



### Intelligent All-Wheel Drive

Altima gives you peace of mind you never thought you could get from a sedan. Part of Nissan Intelligent Mobility, Intelligent All-Wheel Drive continuously monitors road conditions and responds in an instant, sending power to the wheels that need it most.<sup>3,6</sup>

236  
HORSEPOWER<sup>16</sup>

267  
LB-FT OF TORQUE<sup>16</sup>

34  
HWY MPG<sup>17</sup>



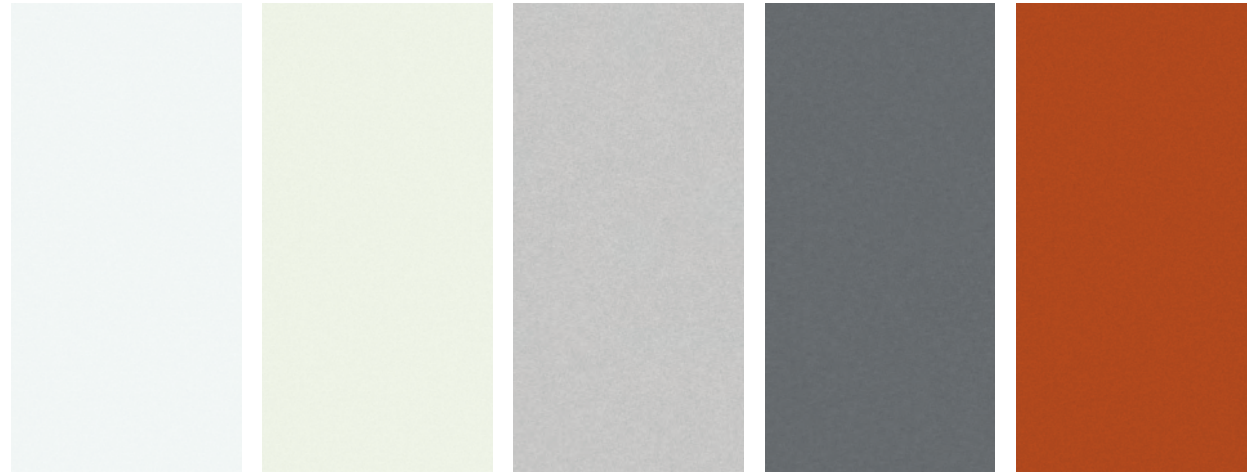
### The world's first production variable compression turbo engine<sup>1</sup>

Imagine an engine so smart it seems to anticipate what you want. Whether it's turbocharged power that pushes you back in your seat or impressive fuel efficiency, even in city streets,<sup>17</sup> Altima SR's shape-shifting VC-Turbo™ engine lets you have both – without compromise.<sup>6</sup>





## CHOOSE YOUR COLOR



Glacier White

Pearl White TriCoat<sup>18</sup>

Brilliant Silver Metallic

Gun Metallic

Sunset Drift ChromaFlair<sup>18</sup>

S SV SR SL PLT

S SV SR SL PLT

S SV SR SL PLT

S SV SR SL PLT

S SV SR SL PLT

CHARCOAL CLOTH	■				
GRAY CLOTH		■			
CHARCOAL SPORT CLOTH			■		
GRAY LEATHER <sup>19</sup>				■	■
CHARCOAL LEATHER <sup>19</sup>				■	■

CHARCOAL CLOTH		■			
GRAY CLOTH			■		
CHARCOAL SPORT CLOTH				■	
GRAY LEATHER <sup>19</sup>					■
CHARCOAL LEATHER <sup>19</sup>					■

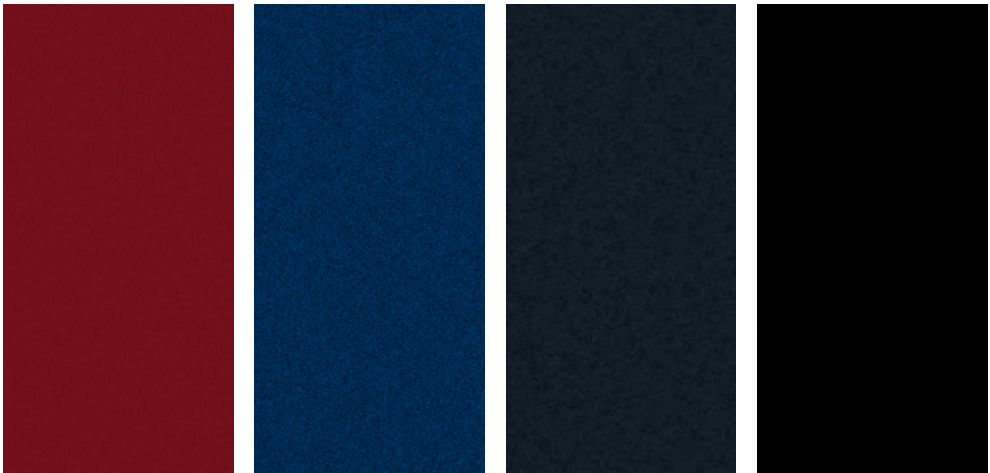
CHARCOAL CLOTH	■	■			
GRAY CLOTH			■		
CHARCOAL SPORT CLOTH				■	
GRAY LEATHER <sup>19</sup>					■
CHARCOAL LEATHER <sup>19</sup>					■

CHARCOAL CLOTH	■	■			
GRAY CLOTH			■		
CHARCOAL SPORT CLOTH				■	
GRAY LEATHER <sup>19</sup>					■
CHARCOAL LEATHER <sup>19</sup>					■

CHARCOAL CLOTH					
GRAY CLOTH			■		
CHARCOAL SPORT CLOTH				■	
GRAY LEATHER <sup>19</sup>					■
CHARCOAL LEATHER <sup>19</sup>					■

■ Standard

Nissan has taken care to ensure that the color swatches presented here are the closest possible representations of actual vehicle colors. Swatches may vary slightly due to the printing process and whether viewed in daylight, fluorescent or incandescent light. Please see the actual colors at your dealer.



Scarlet Ember Tintcoat<sup>18</sup>

Deep Blue Pearl

Storm Blue Metallic

Super Black

S SV SR SL PLT

S SV SR SL PLT

S SV SR SL PLT

S SV SR SL PLT

CHARCOAL CLOTH		■			
GRAY CLOTH			■		
CHARCOAL SPORT CLOTH				■	
GRAY LEATHER <sup>19</sup>					■
CHARCOAL LEATHER <sup>19</sup>					■

CHARCOAL CLOTH		■			
GRAY CLOTH			■		
CHARCOAL SPORT CLOTH				■	
GRAY LEATHER <sup>19</sup>					■
CHARCOAL LEATHER <sup>19</sup>					■

CHARCOAL CLOTH	■	■			
GRAY CLOTH			■		
CHARCOAL SPORT CLOTH				■	
GRAY LEATHER <sup>19</sup>					■
CHARCOAL LEATHER <sup>19</sup>					■

CHARCOAL CLOTH					
GRAY CLOTH			■		
CHARCOAL SPORT CLOTH				■	
GRAY LEATHER <sup>19</sup>					■
CHARCOAL LEATHER <sup>19</sup>					■

CHARCOAL CLOTH					
GRAY CLOTH			■		
CHARCOAL SPORT CLOTH				■	
GRAY LEATHER <sup>19</sup>					■
CHARCOAL LEATHER <sup>19</sup>					■

## CHOOSE YOUR INTERIOR



Nissan Altima<sup>®</sup> Platinum shown in Charcoal Leather.<sup>19</sup>



Charcoal Cloth  
S|SV

Gray Cloth  
SV

Charcoal Sport Cloth  
SR

Gray Leather<sup>19</sup>  
SL|Platinum

Charcoal Leather<sup>19</sup>  
SL|Platinum



## CHOOSE YOUR TRIM LEVEL

**S**

2.5-liter Direct Injection Gasoline (DIG) DOHC 16-valve 4-cylinder engine • Front-Wheel Drive (FWD) • Xtronic CVT® (Continuously Variable Transmission) • Front vented disc/rear solid disc brakes • Anti-lock Braking System (ABS) • Electronic Brake force Distribution (EBD) • Brake Assist<sup>20</sup> • Dual-pinion electric-powered steering • Cruise control • Automatic Emergency Braking with Pedestrian Detection<sup>9</sup> • Lane Departure Warning<sup>12</sup> • Intelligent Forward Collision Warning<sup>21</sup> • RearView Monitor<sup>22</sup> • Vehicle Dynamic Control (VDC)<sup>23</sup> with Traction Control System (TCS) • Hill start assist • High Beam Assist • Intelligent Driver Alertness<sup>24</sup> • 16" Steel wheels with wheel covers • Active grille shutters • Intelligent Auto Headlights • Halogen projector headlights • Dual power outside mirrors • Air conditioning • Power windows with one-touch driver-side auto-up/down • Power door locks with auto-locking feature • Rear Door Alert<sup>25</sup> • Nissan Intelligent Key® with Push Button Ignition • Remote Engine Start System<sup>26</sup> • Tilt and telescoping steering column • Variable intermittent speed-sensitive windshield wipers • Sun visors with illuminated vanity mirrors and extensions • 60/40-split fold-down rear seatbacks • Cloth seat trim • Carbon-fiber look interior trim • 5" Multi-function information display • 7" touch-screen display • Voice Recognition<sup>27</sup> • Siri® Eyes Free<sup>15</sup> • Hands-free Text Messaging Assistant<sup>28</sup> • Bluetooth® Hands-free Phone System<sup>15</sup> • AM/FM audio system with six speakers • Steering wheel-mounted audio controls • Speed-sensitive volume control • Auxiliary audio input jack<sup>4</sup> • One USB port<sup>4</sup> • Streaming Audio via Bluetooth®<sup>15</sup> • Nissan Advanced Air Bag System with ten air bags<sup>29</sup> • Tire Pressure Monitoring System (TPMS) with individual tire pressure display and Easy-Fill Tire Alert<sup>30, 31</sup>



**SV** INCLUDES S EQUIPMENT PLUS:

Available Intelligent All-Wheel Drive<sup>3</sup> • Electronic parking brake (AWD models only) • Active Brake Limited Slip (AWD models only) • Blind Spot Warning<sup>11</sup> • Rear Cross Traffic Alert<sup>10</sup> • Rear Automatic Braking<sup>9</sup> • Rear Sonar System<sup>32</sup> • Active Ride Control • Intelligent Trace Control<sup>33</sup> • 17" Aluminum-alloy wheels • LED projector headlights with LED signature Daytime Running Lights • Acoustic laminated glass • Piano Black interior trim • 7" Advanced Drive-Assist® Display<sup>34, 35</sup> • NissanConnect® 8" touch-screen display<sup>15</sup> • Apple CarPlay® integration<sup>15</sup> • Android Auto™<sup>15</sup> • Two USB ports and two USB-C ports<sup>4</sup> • SiriusXM® Radio with 3-month subscription included<sup>15</sup>



**SR/SR VC-TURBO™** INCLUDES SV EQUIPMENT PLUS:

Paddle shifters with manual shift mode • Sport-tuned suspension (FWD models only) • 19" Aluminum-alloy wheels • Dark chrome V-Motion grille • Body-color door handles • Black outside mirrors • Charcoal rear diffuser • Dual chrome exhaust finishers • Sport Cloth seat trim • Leather-wrapped steering wheel • Leather-wrapped shift knob • Carbon-fiber look interior trim

### SR VC-TURBO ADDS:

236-hp 2.0-liter Variable Compression Turbo (VC-Turbo™) 4-cylinder engine<sup>16</sup> • Power sliding glass moonroof • Heated outside mirrors with LED turn signal indicators • Driver's seat power lumbar support • Heated front seats

SR VC-Turbo available on Front-Wheel Drive models only.



**SL** INCLUDES SR EQUIPMENT PLUS:

Electronic parking brake • ProPILOT Assist<sup>5</sup> • Intelligent Lane Intervention<sup>12</sup> • Automatic brake hold • Traffic Sign Recognition<sup>36</sup> • 17" Aluminum-alloy wheels • LED fog lights • Heated outside mirrors with LED turn signal indicators • Power sliding glass moonroof • Acoustic laminated glass • Dual Zone Automatic Temperature Control • Rear passenger air conditioning vents • Passenger-side front-window one-touch auto-up/down • Remote Engine Start System with Intelligent Climate Control<sup>26</sup> • 4-way power adjustable front-passenger's seat • Driver's seat power lumbar support • Leather-appointed seats • Heated front seats • Heated steering wheel • Piano Black interior trim • Wood-tone trim • Nissan Door to Door Navigation with 5-year trial access to Premium Traffic included<sup>27</sup> • SiriusXM® Traffic and Travel Link with 3-month trial access included<sup>15</sup> • NissanConnect® Services powered by SiriusXM® with 3-year trial access to Select and 6-month trial access to Premium and Premium Plus packages included<sup>15</sup> • Bose Premium Audio System with nine speakers



**PLATINUM** INCLUDES SL EQUIPMENT PLUS:

Standard Intelligent All-Wheel Drive<sup>3</sup> • Intelligent Around View® Monitor<sup>13</sup> • 19" Aluminum-alloy wheels • Auto-dimming inside rearview mirror • HomeLink® Universal Transceiver • Interior accent lighting • Memory System – driver's seat and outside mirrors



## CHOOSE YOUR PACKAGE

**S** DRIVER ASSIST PACKAGE

- Rear Automatic Braking<sup>9</sup>
- Rear Cross Traffic Alert<sup>10</sup>
- Blind Spot Warning<sup>11</sup>
- Rear Sonar System<sup>32</sup>



**SV** PREMIUM PACKAGE

- Electronic parking brake
- ProPILOT Assist<sup>5</sup>
- Intelligent Lane Intervention<sup>12</sup>
- Automatic brake hold
- Heated outside mirrors with LED turn signal indicators
- Power sliding glass moonroof
- Driver's seat power lumbar support
- Heated front seats
- Leather-wrapped steering wheel
- Leather-wrapped shift knob
- Dual chrome exhaust finishers



**SR** PREMIUM PACKAGE

- Power sliding glass moonroof
- Driver's seat power lumbar support
- Heated front seats
- Heated outside mirrors with LED turn signal indicators

This package is available on 2.5-L models and standard on 2.0-L VC-Turbo model.





## CHOOSE YOUR ACCESSORIES



**A. All-Season Floor Mats**

Skip the mud – and other messes.

**B. All-Season Trunk Area Protector**

Keep it looking like new.

**C. Portable Cargo Organizer<sup>38</sup>**

A place for everything and everything in its place.

**D. Clear Door Edge Protector**

Help preserve your paint.

**E. Illuminated Kick Plates**

Fewer scuffs and a grand entry, every time.

**F. Impact Sensor**

Keep your Altima alarmed, so you don't have to be.

**G. Sliding Trunk Organizer Tray<sup>38</sup>**

Bring some order to your cargo area.

**H. Shopping Bag Hooks**

Secure your groceries and keep it together.

Additional Accessories:

- Carpeted Floor Mats
- Carpeted Trunk Area Protector
- Hideaway Trunk Net Kit
- Clear Rear Bumper Protector
- Black Rear Bumper Protector
- Wheel Locks
- And More

For more information and to shop online for Altima® Genuine Nissan Accessories, go to [bit.ly/21Altima-Accy](https://bit.ly/21Altima-Accy)

## GENUINE NISSAN ACCESSORIES

### Turn brand-new into all you

Every Genuine Nissan Accessory is custom-fit, custom-designed, and durability-tested. Each one is backed by Nissan's 3-year/36,000-mile (whichever occurs first) limited warranty (if installed by dealer at the time of purchase), and can be financed when installed by dealer at time of purchase.<sup>37</sup>

To see Genuine Nissan Accessories in action, go to [bit.ly/21Altima-GNA](https://bit.ly/21Altima-GNA)



**Nissan Altima® SL** shown in Scarlet Ember Tintcoat with 17" Aluminum-alloy Wheels, Splash Guards, Chrome Body Side Moldings, Chrome Rear Bumper Protector, and Rear Spoiler.



## SPECIFICATIONS

Engines	S	SV	SR	SL	Platinum
2.5-liter Direct Injection Gasoline (DIG™) DOHC 16-valve 4-cylinder engine _188 <sup>39</sup> /182 <sup>40</sup> hp @ 6,000 rpm _180 <sup>39</sup> /178 <sup>40</sup> lb-ft of torque @ 3,600 rpm	■	■	■	■	■
2.0-liter Variable Compression Turbo (VC-Turbo™) DOHC 16-valve 4-cylinder engine _248/236 hp @ 5,600 rpm <sup>16</sup> _273/267 lb-ft of torque @ 4,000 rpm <sup>16</sup>			□		

Drivetrain	S	SV	SR	SL	Platinum
Front-Wheel Drive (FWD)	■	■	■	■	■
Intelligent All-Wheel Drive (AWD) <sup>3</sup>		□	□	□	■
Xtronic CVT® (Continuously Variable Transmission)	■	■	■	■	■
Paddle shifters with manual shift mode			■		

Brakes	S	SV	SR	SL	Platinum
Front vented disc/solid rear disc brakes	■	■	■	■	■
Anti-lock Braking System (ABS)	■	■	■	■	■
Electronic Brake force Distribution (EBD)	■	■	■	■	■
Brake Assist <sup>20</sup>	■	■	■	■	■
Electronic parking brake		□ P1	□	■	■

Suspension/Steering	S	SV	SR	SL	Platinum
Independent strut front suspension	■	■	■	■	■
Multi-link independent rear suspension	■	■	■	■	■
Twin-tube front struts/monotube rear shock absorbers	■	■	■	■	■
Sport-tuned suspension <sup>39</sup>			□		
Front and rear stabilizer bars	■	■	■	■	■
Dual pinion electric-powered steering	■	■	■	■	■

Driver Assistance Technologies	S	SV	SR	SL	Platinum
Cruise control	■	■	■		
ProPILOT Assist <sup>5</sup>		P1		■	■
Intelligent Forward Collision Warning <sup>21</sup>	■	■	■	■	■
Automatic Emergency Braking with Pedestrian Detection <sup>6</sup>	■	■	■	■	■
Lane Departure Warning <sup>12</sup>	■	■	■		
Intelligent Lane Intervention <sup>12</sup>		P1		■	■
Blind Spot Warning <sup>11</sup>	D	■	■	■	■
Rear Cross Traffic Alert <sup>10</sup>	D	■	■	■	■
Rear Automatic Braking <sup>9</sup>	D	■	■	■	■
Rear Sonar System <sup>32</sup>	D	■	■	■	■
RearView Monitor <sup>22</sup>	■	■	■	■	
Intelligent Around View® Monitor <sup>13</sup>					■
Vehicle Dynamic Control (VDC) <sup>23</sup> with Traction Control System (TCS)	■	■	■	■	■
Active Brake Limited Slip		□	□	□	■
Active Ride Control		■	■	■	■
Intelligent Trace Control <sup>33</sup>		■	■	■	■
Hill start assist	■	■	■	■	■
Automatic brake hold		P1		■	■
High Beam Assist	■	■	■	■	■
Traffic Sign Recognition <sup>36</sup>				■	■
Intelligent Driver Alertness <sup>24</sup>	■	■	■	■	■

Wheels/Tires	S	SV	SR	SL	Platinum
16" Steel wheels with wheel covers	■				
17" Aluminum-alloy wheels		■		■	
19" Aluminum-alloy wheels			■		■
P215/60HR16 all-season tires	■				
P215/55VR17 all-season tires		■		■	
P235/40VR19 all-season tires			■		■

Exterior Features	S	SV	SR	SL	Platinum
Active grille shutters	■	■	■	■	■
Intelligent Auto Headlights	■	■	■	■	■
Halogen projector headlights	■				
LED projector headlights with LED signature Daytime Running Lights		■	■	■	■
LED fog lights				■	■
Dual power outside mirrors	■	■	■	■	■
Heated outside mirrors with LED turn signal indicators		P1	P2	■	■
Power sliding glass moonroof		P1	□ P2	■	■
Acoustic laminated glass		■		■	■
Dark chrome V-Motion grille			■		
Black outside mirrors			■		
Charcoal rear diffuser			■		
Dual chrome exhaust finishers		P1	■	■	■

Comfort/Convenience	S	SV	SR	SL	Platinum
Air conditioning	■	■	■		
Dual Zone Automatic Temperature Control				■	■
Rear passenger air conditioning vents				■	■
Power windows with one-touch driver-side auto-up/down	■	■	■	■	■
Passenger-side front-window one-touch auto-up/down				■	■
Power door locks with auto-locking feature	■	■	■	■	■
Rear Door Alert <sup>25</sup>	■	■	■	■	■
Nissan Intelligent Key® with Push Button Ignition	■	■	■	■	■
Remote Engine Start System <sup>26</sup>	■	■	■		
Remote Engine Start System <sup>26</sup> with Intelligent Climate Control				■	■
Variable intermittent speed-sensitive windshield wipers	■	■	■	■	■
Auto-dimming inside rearview mirror					■
HomeLink® Universal Transceiver					■
Interior accent lighting					■

Seating/Appointments	S	SV	SR	SL	Platinum
6-way manual adjustable driver's seat	■ <sup>41</sup>				
8-way power adjustable driver's seat	■ <sup>42</sup> D <sup>41</sup>	■	■	■	■
4-way power adjustable front-passenger's seat				■	■
Driver's seat power lumbar support		P1	P2	■	■
Memory System - driver's seat and outside mirrors					■
60/40-split fold-down rear seatbacks	■	■	■	■	■
Cloth seat trim	■	■			
Sport Cloth seat trim			■		
Leather-appointed seats				■	■
Heated front seats		P1	P2	■	■

Seating/Appointments (continued)	S	SV	SR	SL	Platinum
Heated steering wheel				■	■
Leather-wrapped steering wheel and shift knob		P1	■	■	■
Carbon-fiber look interior trim	■		■		
Piano Black interior trim		■		■	■
Wood-tone trim				■	■

Audio/Entertainment	S	SV	SR	SL	Platinum
5" Multi-function information display	■				
7" Advanced Drive-Assist® Display <sup>34, 35</sup>		■	■	■	■
7" touch-screen display	■				
NissanConnect® 8" touch-screen display <sup>15</sup>		■	■	■	■
Nissan Door to Door Navigation with 5-year trial access to Premium Traffic included <sup>27</sup>				■	■
SiriusXM® Traffic and Travel Link <sup>15</sup>				■	■
NissanConnect® Services powered by SiriusXM <sup>®15</sup>				■	■
Voice Recognition <sup>27</sup>	■	■	■	■	■
Apple CarPlay® integration <sup>15</sup>		■	■	■	■
Android Auto™ <sup>15</sup>		■	■	■	■
Siri® Eyes Free <sup>15</sup>	■	■	■	■	■
Hands-free Text Messaging Assistant <sup>28</sup>	■	■	■	■	■
Bluetooth® Hands-free Phone System <sup>15</sup>	■	■	■	■	■
AM/FM audio system with six speakers	■	■	■		
Bose Premium Audio System with nine speakers				■	■
Active Noise Cancellation			■		
Steering wheel-mounted audio controls	■	■	■	■	■
Speed-sensitive volume control	■	■	■	■	■
Auxiliary audio input jack <sup>4</sup>	■	■	■	■	■
One USB port <sup>4</sup>	■				
Two USB ports and two USB-C ports <sup>4</sup>		■	■	■	■
SiriusXM® Radio <sup>15</sup>		■	■	■	■
Streaming Audio via Bluetooth® <sup>15</sup>	■	■	■	■	■

Safety/Security	S	SV	SR	SL	Platinum
Nissan Advanced Air Bag System with dual-stage supplemental front air bags with seat-belt and occupant-classification sensors <sup>29</sup>	■	■	■	■	■
Seat-mounted side-impact supplemental air bags for front- and rear-seat outboard occupants <sup>29</sup>	■	■	■	■	■
Driver and front-passenger supplemental knee air bags <sup>29</sup>	■	■	■	■	■
Roof-mounted curtain side-impact supplemental air bags with rollover sensor for front- and rear-seat outboard occupant head protection <sup>29</sup>	■	■	■	■	■
3-point ALR/ELR seat belt system (ELR only for driver)	■	■	■	■	■
Front and rear outboard seat belts with pretensioners and load limiters	■	■	■	■	■
LATCH System (Lower Anchors and Tethers for Children)	■	■	■	■	■
Tire Pressure Monitoring System (TPMS) with individual tire pressure display and Easy-Fill Tire Alert <sup>30, 31</sup>	■	■	■	■	■
Nissan Vehicle Immobilizer System	■	■	■	■	■
Vehicle Security System	■	■	■	■	■

■ Standard □ Optional D Part of Driver Assist Package P1 Part of SV Premium Package P2 Part of SR Premium Package

## DIMENSIONS/CAPACITIES/WEIGHTS/MPG

Exterior Dimensions - Inches	
Wheelbase	111.2
Overall length	192.9
Overall width	72.9
Overall height	56.7 – 57.4 (depending on vehicle configuration)
Track width	62.8 – 63.6 (depending on vehicle configuration)

Aerodynamics - CD	
Drag coefficient (Cd)	0.26

Interior Dimensions (Front/Rear) - Inches	
Head room without moonroof	39.2/36.9
Head room with moonroof	38.0/36.7
Shoulder room	58.2/57.1
Hip room	54.7/54.5
Leg room	43.8/35.2

Capacities	
Seating capacity	5
Interior passenger volume without moonroof (cu. ft.)	100.8
Interior passenger volume with moonroof (cu. ft.)	98.8
Cargo capacity (cu. ft.) <sup>38</sup>	15.4
Fuel tank (gals.)	16.2 (FWD)/16.0 (AWD)

Curb Weights - Lbs.					
Base total (lbs.)	S	SV	SR	SL	Platinum
2.5-L FWD	3,207	3,245	3,296	3,296	-
2.5-L AWD	-	3,367	3,418	3,423	3,463
2.0-L VC-Turbo FWD	-	-	3,425	-	-

2021 EPA Fuel Economy Estimates <sup>17</sup>					
City/Hwy/Combined MPG	S	SV	SR	SL	Platinum
2.5-L FWD	28/39/32	27/37/31	27/37/31	27/37/31	-
2.5-L AWD	-	26/36/30	25/35/29	26/36/30	25/35/29
2.0-L VC-Turbo FWD	-	-	25/34/29	-	-

## NISSAN ROADSIDE ASSISTANCE

Your peace of mind is on us. For 36 months or 36,000 miles, whichever comes first, your new Nissan vehicle is covered for the following:<sup>43</sup>

- Flat-tire changes
- Trip Interruption benefits
- Jump starts
- Vehicle lockouts
- Emergency fuel delivery

Follow Nissan on:



visit [NissanUSA.com/altima](https://www.nissanusa.com/altima)

PRINTED IN POLAND