



2022 Sail Race Handbook

Table of Contents

RACING RULES _____	2
SKIPPERS MEETING _____	2
COMMUNICATIONS/SIGNALS _____	2
STARTING and FINISHING TIMES _____	3
Abandonment and Postponements _____	3
Safety Equipment _____	3
AUTOPILOT USAGE _____	3
MARKS CHART _____	4
MARK LOCATIONS _____	5
COMPASS HEADINGS BETWEEN MARKS _____	6
DISTANCES BETWEEN MARKS _____	6
COURSE DESCRIPTIONS _____	7
ANNOUNCING THE COURSE _____	8
Starting Lines _____	8
Starting Area _____	8
Finishing lines _____	9
Missing Marks _____	9
FLEET DEFINITIONS, SERIES, AND SCORING _____	10
Section Breaks _____	10
Handicapping _____	10
Scoring _____	10
Defined Series _____	11
Protests and Redress _____	11

RACING RULES

All Michigan City Sail Races will be conducted according to the 2021 - 2024 rules as published by US Sailing (as amended by this manual and instructions provided). The current US SAILING rule book will form the basis for race management, starting and finishing procedures, sailing rules, and protests except where otherwise noted in these sailing instructions.

SKIPPER'S MEETING

- For races started from Michigan City:
 - Time 1 hour prior to the published race start time.
 - Location End of 400 Dock.
- Agenda Check-in.
 - Crew Pick-up.
 - Race Course.
- Changes to Notice of Race.
- Special Instructions and Announcements.
- Optionally the Skippers Meeting may be done electronically via conference call, VHF channel 71, zoom or other means.

Note: For races starting at other ports, skippers meeting will be at dock location of committee boat.

COURSE NOTIFICATION FOR SPIN CLASS

- For offshore races the race instructions will be published.
- For series races the courses will be specified on the course via channel 71.

COMMUNICATIONS/SIGNALS

- Initial instructions for race course, starting times, time limits, and special instructions will be provided at the skippers meeting.
- The primary means of communications on the water will be via VHF radio channel 71. This will be true for:
 - Changes of race course (to be made prior to preparatory signal).
 - Start Sequence.
 - Individual and General Recalls.
 - Shortening of Course.
 - As well as other instances in the race rules that call for race committee signals.
 - Safety calls.
- When practical, sounds and flags called for in race rules will be used. However, lack of flags or sounds shall not be the basis for redress or protest.

STARTING and FINISHING TIMES

- All starting and finishing times will be based on GPS time corrected to Central Time, as applicable in Michigan City, Indiana. (This includes races started from other ports).
- The starting sequence for all races will be as follows:
 - If a dedicated committee boat IS present:
 - Radio hail announcing sequence. Approx. 1 min prior to start of sequence.
 - Warning: Radio-71 (Section Flag, Short Sound) 5 minutes to start.
 - Preparatory: Radio-71 (P-Flag, Short Sound) 4 minutes to start.
 - One Minute: Radio-71 (P-Flag, Long Sound) 1 minute to start.
 - Start: Radio-71 (Sound and New Section Flag Up) Start of Race.
 - Start of race is Warning for next section. 5 minutes to start
 - If a dedicated committee boat is NOT present:
 - The ACTING committee boat will notify by VHF Channel 71 if there are any changes to published start time
 - Start time will be at the published start time using GPS time unless modified per above
 - There will NOT be any sound signals, flags or VHF communication during the starting sequence. It will be the competitor's responsibility to start on time.

Sections will start in the following order:

- 1st- Spin 1 and Spin 2
- 2nd- JAM 1 and JAM 2
- (Note: Subject to change based on participation)
- Finish Times: If a committee boat is not at the finish, individual boats are responsible for recording their own finish times. Times can be submitted via text message. Skippers are responsible to submit Race Results for their boat to the Race Director or Scoring Lead within 3 hours of their boat's finish for races that a Committee boat is not available. Race Results include Finish Time, Boat Ahead and Boat Astern if known. Race Results not submitted by the cutoff time will not be included. Preliminary Race Results will be announced at the Race Results Board after the last boat finishes and handicaps are calculated.
- Time limits - For all buoy races, the first boat in the fleet must finish within 3 hours of the start for the race to count. For Distance Series races the first boat in the fleet must finish within 6 hours.

Abandonment and Postponements

In making decisions on race abandonment or postponements, the safety of all racers will be considered. However, each skipper or owner must assume full responsibility for his/her yacht's safety.

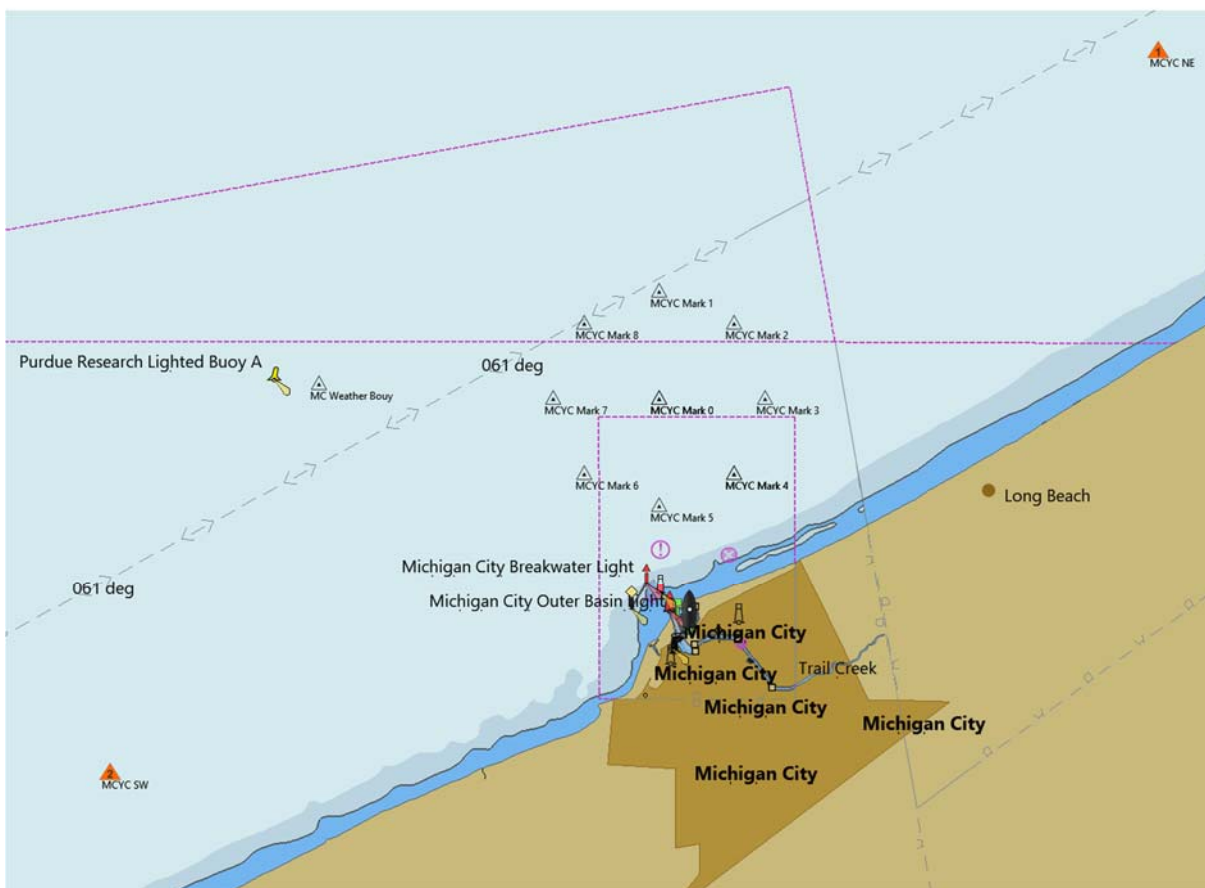
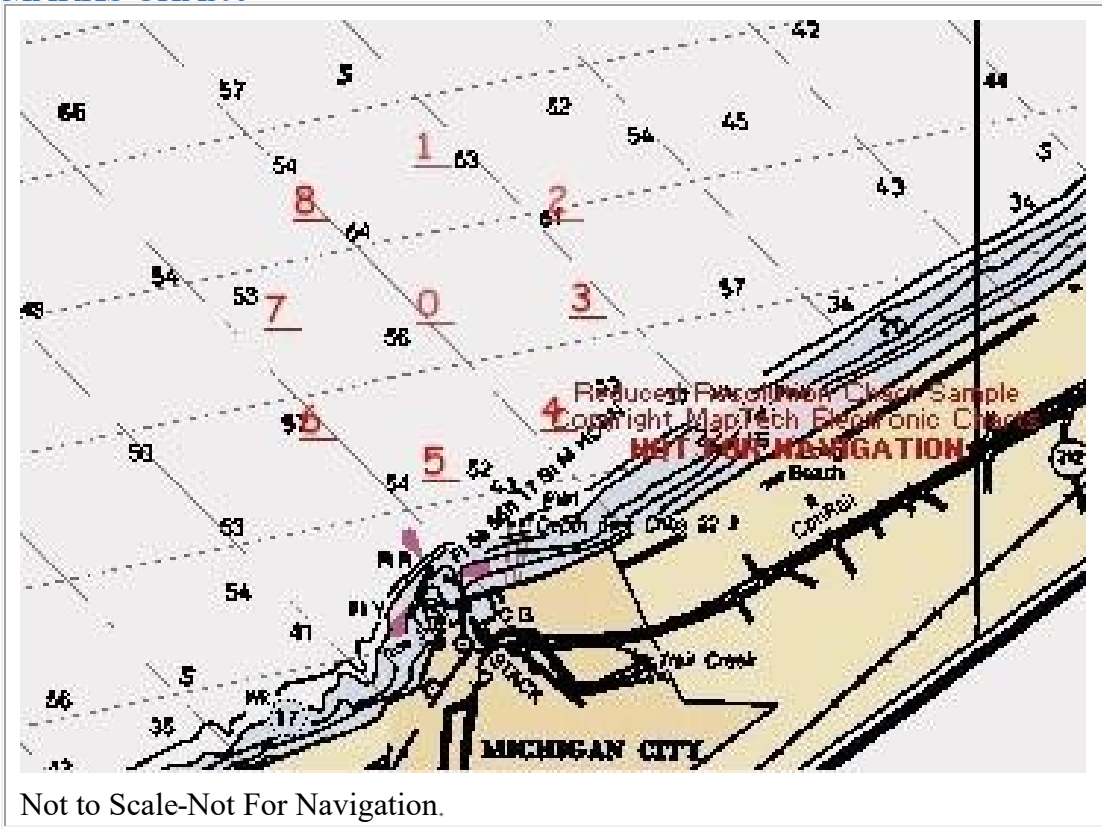
Safety Equipment

All required safety equipment as defined by Coast Guard regulations, as well as state law is to be carried. As with the decision to race, each skipper or owner must assume full responsibility for the safety of his or her crew.

Use of an Autopilot While Racing

The use of an Autopilot while racing is prohibited UNLESS racing single or double handed where use of an Autopilot IS allowed.

MARKS CHART



MARK LOCATIONS

Mark #	Latitude		Longitude	
	Degrees	Minutes	Degrees	Minutes
0	N 41	45.200	W 86	54.700
1	N 41	46.000	W 86	54.700
2	N 41	45.760	W 86	53.950
3	N 41	45.200	W 86	53.640
4	N 41	44.640	W 86	53.950
5	N 41	44.400	W 86	54.700
6	N 41	44.640	W 86	55.450
7	N 41	45.200	W 86	55.760
8	N 41	45.760	W 86	55.450
NE	N 41	47.800	W 86	49.700
SW	N 41	42.400	W 87	00.200
WTHR Buoy	N41	45.308	W86	58.108
WH Crb	N41	39.465	W 87	7.366
WH 8	N41	40.667	W 87	4.751
WH 6	N41	41.661	W 87	2.428
WH 4	N41	42.617	W 87	0.019

Notes:

Marks 1-8 are at 0.8 NM radius from mark 0, the normal starting area.

Mark NE is 4.5 NM from mark 0 at 060 deg (this a new MCYC mark for 2021).

Mark SW is 5.0 NM from mark 0 at 240 deg (this is a new MCYC mark for 2021).

WTHR Buoy is the Perdue Research Weather Buoy approximately 2.6 NM West of mark 0.

WH marks are temporary mark location options for the Westward Ho race.

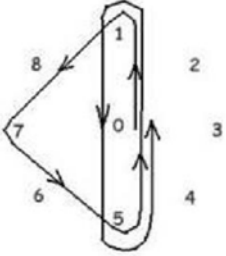
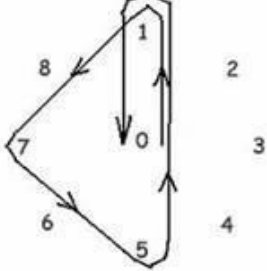
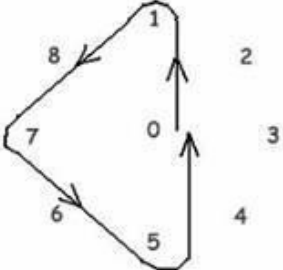
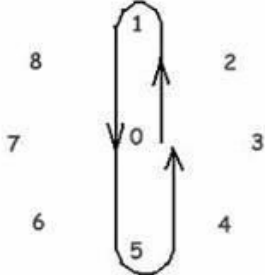
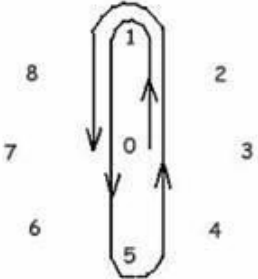
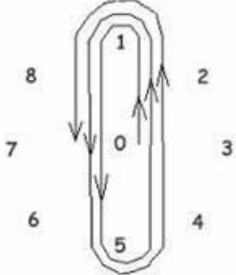
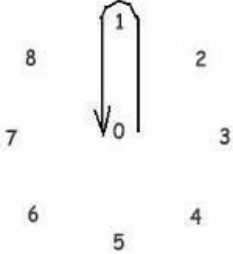
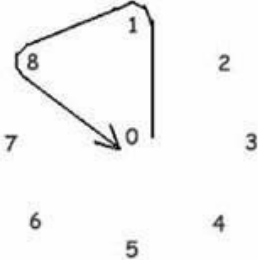
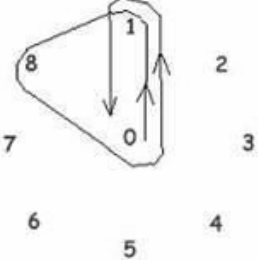
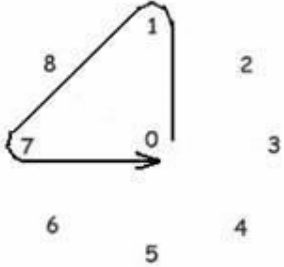
COMPASS HEADINGS BETWEEN MARKS

To-> From	0	1	2	3	4	5	6	7	8	NE	SW	WHTR BUOY
0		360	45	90	135	180	225	270	315	60	240	276
1	180		113	135	158	180	202	225	247	68	233	
2	225	293		158	180	202	225	247	270	62	238	
3	270	315	338		202	225	247	270	293	58	244	
4	315	338	360	22		247	270	293	315	49	248	
5	360	360	22	45	67		293	315	338	52	248	
6	45	22	45	67	90	113		338	360	58	242	
7	90	45	67	90	113	135	158		22	64	234	
8	135	67	90	113	135	158	180	202		69	231	
NE	240	248	242	232	229	232	238	244	249		240	72
SW	60	53	58	64	68	68	62	54	51	60		32
WHTR BUOY	96									252	212	

DISTANCES BETWEEN MARKS

To-> From	0	1	2	3	4	5	6	7	8	NE	SW	WHTR BUOY
0		0.8	0.8	0.8	0.8	0.8	0.8	0.8	0.8	4.5	5.0	2.6
1	0.8		0.6	1.1	1.5	1.6	1.5	1.2	0.6	4.1	5.5	
2	0.8	0.6		0.6	1.1	1.5	1.6	1.5	1.2	3.7	5.7	
3	0.8	1.2	0.6		0.6	1.1	1.5	1.6	1.5	3.9	5.6	
4	0.8	1.5	1.2	0.6		0.6	1.1	1.5	1.6	4.4	5.2	
5	0.8	1.6	1.5	1.2	0.6		0.6	1.1	1.5	5.0	4.5	
6	0.8	1.5	1.6	1.5	1.2	0.6		0.6	1.1	5.3	4.2	
7	0.8	1.2	1.5	1.6	1.5	1.2	0.6		0.6	5.2	4.3	
8	0.8	0.6	1.2	1.5	1.6	1.5	1.2	0.6		4.7	4.9	
NE	4.5	4.1	3.7	3.9	4.4	5.0	5.3	5.2	4.7		9.5	5.8
SW	5.0	5.5	5.7	5.6	5.2	4.5	4.2	4.3	4.9	9.5		3.3
WHTR BUOY	2.6									5.8	3.3	

COURSE DESCRIPTIONS - 9 Marks course Note (Port courses shown. Starboard courses are a mirror image of port courses)

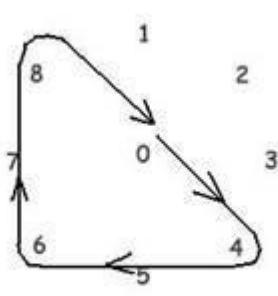
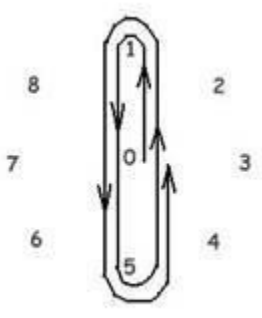
	<p>Course: Port A Distance: 7.0 N miles</p>	<p>Course: Port B Distance: 5.4 N miles</p>	
	<p>Course: Port C Distance: 3.8 N miles</p>	<p>Course: Port D Distance: 3.2 N miles</p>	
	<p>Course: Port E Distance: 4.8 N miles</p>	<p>Course: Port F Distance: 8.0 N miles</p>	
	<p>Course: Port G Distance: 1.6 N miles</p>	<p>Course: Port H Distance: 2.2 N miles</p>	
	<p>Course: Port I Distance: 3.8 N miles</p>	<p>Course: Port J Distance: 2.7 N miles</p>	

Note: Race Committee has the option to call courses other than those shown. These will be called on a mark by mark basis. (e.g. Start at mark 5, round mark 1, round mark 7, finish at 5, all marks to port)

ANNOUNCING THE COURSE

The announcing of the course will come in four parts:

- Part 1- The Pattern: A, B, C, D, E, F, G, H, I or J
- Part 2- The 1st Mark in the pattern: 1, 2, 3, 4, 5, 6, 7, or 8
- Part 3- The turning direction: Port or Starboard
- Part 4- Number of times the pattern is sailed (i.e. x1-sail the course once, x2-sail the course twice)

<p>Example 1: C-4-Starboard-x1</p> 	<p>Example 2: D-1-Port-x2</p> 
--	--

Starting Lines

<p><u>Port rounding races:</u> the starting line will be a line defined by mark "0" on the Port end and a temporary mark dropped by the race committee on the Starboard end.</p>	<p><u>Starboard rounding races:</u> the starting line will be a line defined by mark "0" on the Starboard end and a temporary mark dropped by the race committee on the Port end.</p>
---	--

Starting Area

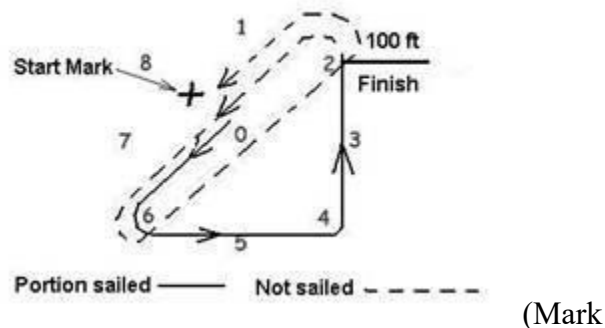
Boats shall keep clear of the starting area until their starting sequences have begun. Only the Race Committee can lodge protests for this breach. A scoring penalty of 20%, per rule 44.3 shall apply. The starting area is defined as extending one-half the length of the starting line beyond each end of the starting line and one-half the length of the starting line behind and in front of the starting line. For Offshore races, the starting line may be moved closer to the finishing port location based on expected weather conditions. Once started an offshore race will not be stopped and restarted.

Finishing lines

If the Race is finished at Mark 0, the Start line is also the finish line. Boats shall cross the line in a manner closest to a line directly from last mark. All other cases:

- If practical the race committee will set a temporary mark to define the finishing line.
- If a boat approaches a finishing mark and a finishing line has not been set by race committee, the boat shall take its time when it crosses a line projected from the finishing mark 100 feet and perpendicular to a straight line course from the last mark.
- For offshore races, an intermediate gate may be a part of the course. This will be a provisional shortening point. If instructed at the skippers meeting, boats shall record their time when passing through the gate. The race may be shortened after some boats have already passed through the gate. Such announcement will be made on VHF radio.
- If the direction of the last leg is opposite of the starting direction, then the finish line is the same as the start line except the pin end shall be taken to starboard. (for port rounding courses)

Example 1: A-6-Port-x1, shortened to the 3rd leg



2)

Missing Marks

- If practical the race committee will set a temporary mark.

If a boat approaches a *mark location and the mark is not within 1/4 nm* and a temporary mark has not been set, the boat shall make a navigational rounding based on GPS. The boat must either

clearly round the mark location as shown on GPS track

Or pass within 60' OF THE MARK LOCATION as shown on GPS track to qualify as rounding.

FLEET DEFINITIONS, SERIES, AND SCORING

Section Breaks

JAM 1 Fleet: For PHRF Ratings < 180	JAM 2 Fleet: For PHRF Ratings > 180	SPIN 1 Fleet: For PHRF Ratings < 100	SPIN 2 Fleet: For PHRF Ratings 100 and up
---	---	--	---

(Note: Subject to change based on participation)

Handicapping

All races will be scored using the PHRF Time On Distance (TOD) rating system. The formula for PHRF is
 $\text{Corrected Time} = \text{Elapsed Time} - (\text{Race Distance} * \text{PHRF}) / 60$.

It is strongly suggested each boat produce a valid LMPHRF rating certificate. Any boat that does not have a valid LMPHRF rating certificate will be assigned a provisional rating by the Race Committee. A small penalty may be built into provisional ratings. LMPHRF and provisional ratings shall be final and not accepted as grounds for a protest of MCYC sponsored races.

LMPHRF certificates can be obtained at <https://lmphrf.org/>

Your LMPHRF handicap can be found at <https://lmphrf.org/index.php/display-a-handicap>

Scoring

Series races will be scored on a low point basis with 1 point being awarded to the first place boats, 2 to 2nd, 3 for 3rd, and so on. If a boat registers and is in the starting area, but did not start (DNS) or did not finish a race (DNF), its score for that race will be the number of boats in the race (including itself) plus 1. If a boat is disqualified (DSQ), its score for that race will be the number of boats in the race plus 1. If a boat does not compete in a race, its score for that race will be the number of boats in the fleet for that series. A boat must compete in 3 races in a Series to be counted in the Series scoring, except for the Special series.

The first abandoned race in a series will not count as a drop. There will be a minimum of 1 drop in all series. (note: At least 2 races will be included in the offshore series) No Make-up races in any series.

Skippers are responsible to submit any changes to PHRF ratings to the Race Director or Scoring Lead within a week of being notified of the change by Lake Michigan PHRF.

If payment is not received by end of the season, the Skipper's boat will not be included in the Sailing Club scoring for that Season. Non-members may on their first year try out the Sailing program for 2 races, after this point membership is required to be included in the Program.

Defined Series

The defined series will be noted on the published sailing schedule along with number of drops allowed.

Note: Which races are in a series are defined in the Season Schedule. Boats must declare their section at start of series for scoring, however they can race in whatever section they like.

Protests and Redress

All protests or redress requests will be handled in compliance with 2021 - 2024 rules as published by US Sailing. The Protest/Redress Committee will be organized, on an ad hoc basis, by the Race Director to hear protest. If the race director is an interested party to the protest, the Vice-Commodore of Sail will organize the Protest/Redress Committee.

Protesting skipper MUST:

1. At the first reasonable opportunity, inform the other yacht by hailing protest.
2. Fly the protest flag at the first reasonable opportunity. The protest flag shall be Code "B" or a red rectangular flag.
3. Notify the Committee Boat upon finishing or retiring from the race of the nature of the protest and the name of the protested yacht.

Submit to the protest committee a written protest on or before the commencement of the protest meeting. Protest forms can be obtained from the Race Director.